

Data Path : Z:\pestpcbsrv\HPCHEM1\FID_C\Data\FC042222AL\
 Data File : FC059384.D
 Signal(s) : FID1A.CH
 Acq On : 23 Apr 2022 8:38
 Operator : UA/NP
 Sample : N2487-04
 Misc :
 ALS Vial : 33 Sample Multiplier: 1

Instrument :
 FID_C
 ClientSampleId :
 UST-1-S

Integration File: sample.E
 Quant Time: Apr 25 01:31:51 2022
 Quant Method : Z:\pestpcbsrv\HPCHEM1\FID_C\Method\Aliphatic EPH 042122.M
 Quant Title : GC Extractables
 QLast Update : Thu Apr 21 17:30:29 2022
 Response via : Initial Calibration
 Integrator: ChemStation 6890 Scale Mode: Large solvent peaks clipped

Volume Inj. : 1 ul
 Signal Phase : Rxi-1ms
 Signal Info : 20M x 0.18mm x 0.18um

Compound	R.T.	Response	Conc Units

System Monitoring Compounds			
9) S ortho-Terphenyl (SURR)	11.096	5147483	32.033 ug/ml
Spiked Amount	50.000	Recovery	= 64.07%
12) S 1-chlorooctadecane (S...	12.541	4010619	30.713 ug/ml
Spiked Amount	50.000	Recovery	= 61.43%

Target Compounds

(f)=RT Delta > 1/2 Window

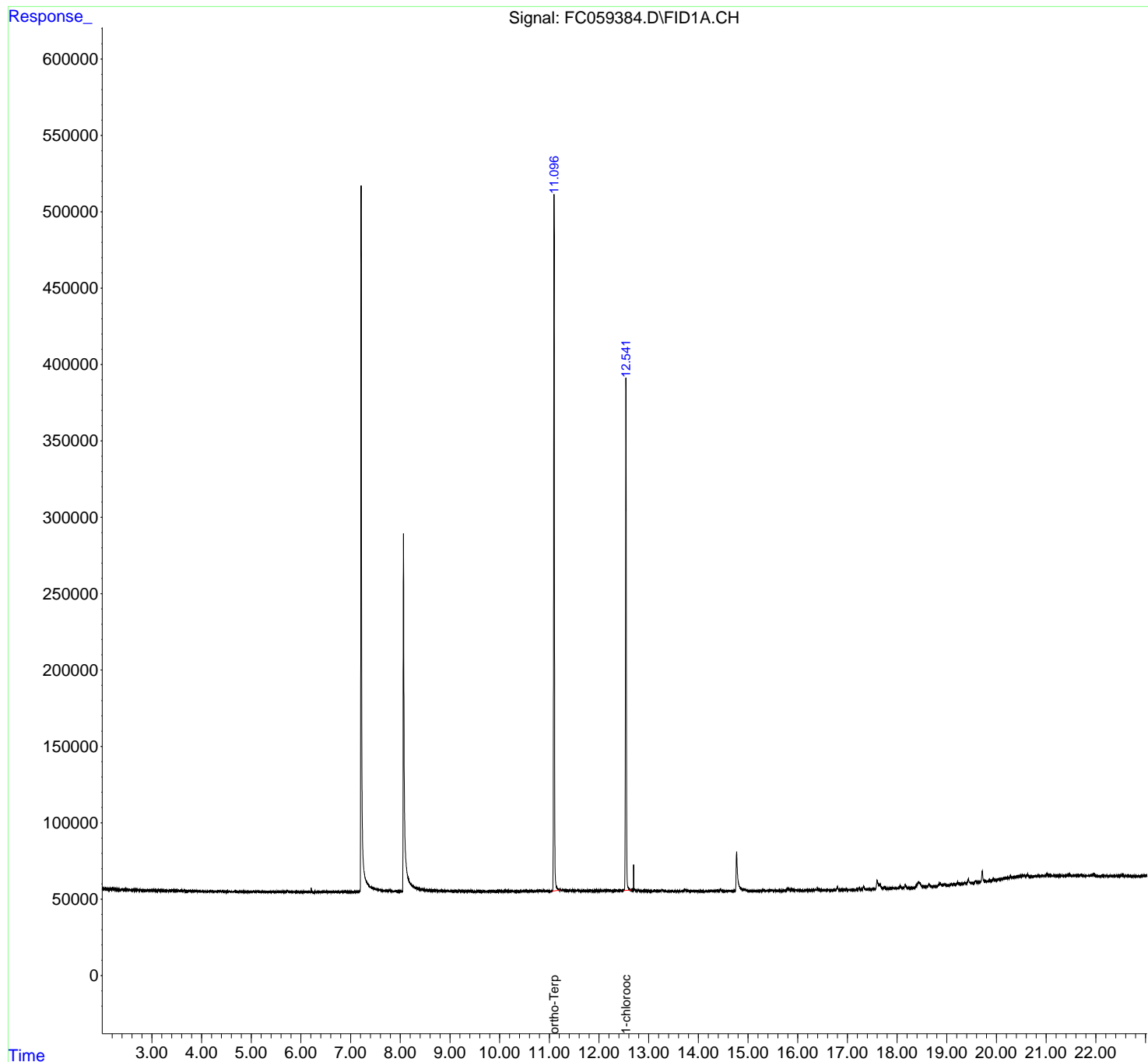
(m)=manual int.

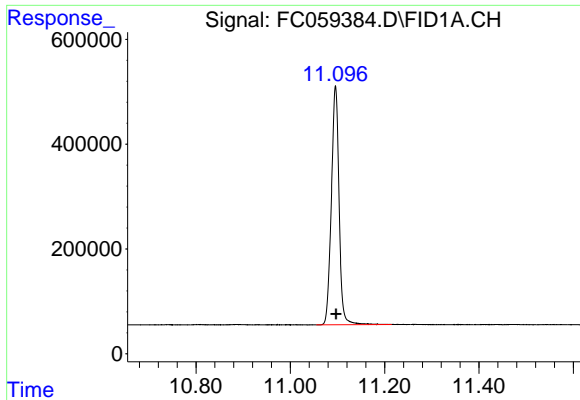
Data Path : Z:\pestpcbsrv\HPCHEM1\FID_C\Data\FC042222AL\
 Data File : FC059384.D
 Signal(s) : FID1A.CH
 Acq On : 23 Apr 2022 8:38
 Operator : UA/NP
 Sample : N2487-04
 Misc :
 ALS Vial : 33 Sample Multiplier: 1

Instrument :
 FID_C
 ClientSampleId :
 UST-1-S

Integration File: sample.E
 Quant Time: Apr 25 01:31:51 2022
 Quant Method : Z:\pestpcbsrv\HPCHEM1\FID_C\Method\Aliphatic EPH 042122.M
 Quant Title : GC Extractables
 QLast Update : Thu Apr 21 17:30:29 2022
 Response via : Initial Calibration
 Integrator: ChemStation 6890 Scale Mode: Large solvent peaks clipped

Volume Inj. : 1 ul
 Signal Phase : Rxi-1ms
 Signal Info : 20M x 0.18mm x 0.18um

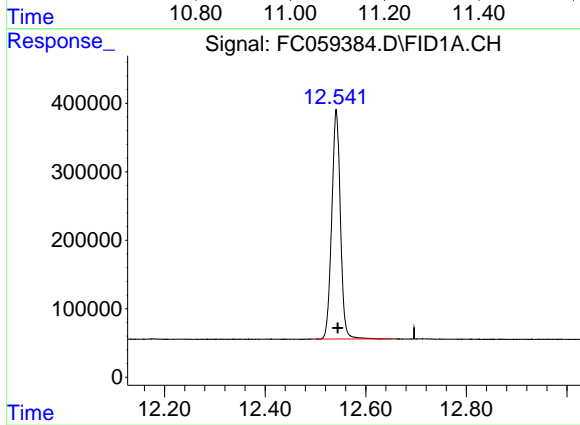




#9 ortho-Terphenyl (SURR)

R.T.: 11.096 min
Delta R.T.: -0.001 min
Response: 5147483
Conc: 32.03 ug/ml

Instrument :
FID_C
ClientSampleId :
UST-1-S



#12 1-chlorooctadecane (SURR)

R.T.: 12.541 min
Delta R.T.: -0.003 min
Response: 4010619
Conc: 30.71 ug/ml