

Data Path : Z:\pestpcbsrv\HPCHEM1\FID_C\Data\FC042222AL\
 Data File : FC059385.D
 Signal(s) : FID1A.CH
 Acq On : 23 Apr 2022 9:15
 Operator : UA/NP
 Sample : N2487-05
 Misc :
 ALS Vial : 34 Sample Multiplier: 1

Instrument :
 FID_C
 ClientSampleId :
 UST-1-W

Integration File: sample.E
 Quant Time: Apr 25 01:32:00 2022
 Quant Method : Z:\pestpcbsrv\HPCHEM1\FID_C\Method\Aliphatic EPH 042122.M
 Quant Title : GC Extractables
 QLast Update : Thu Apr 21 17:30:29 2022
 Response via : Initial Calibration
 Integrator: ChemStation 6890 Scale Mode: Large solvent peaks clipped

Volume Inj. : 1 ul
 Signal Phase : Rxi-1ms
 Signal Info : 20M x 0.18mm x 0.18um

Compound	R.T.	Response	Conc Units

System Monitoring Compounds			
9) S ortho-Terphenyl (SURR)	11.095	5099460	31.735 ug/ml
Spiked Amount	50.000	Recovery	= 63.47%
12) S 1-chlorooctadecane (S...	12.542	4018122	30.771 ug/ml
Spiked Amount	50.000	Recovery	= 61.54%

Target Compounds

(f)=RT Delta > 1/2 Window

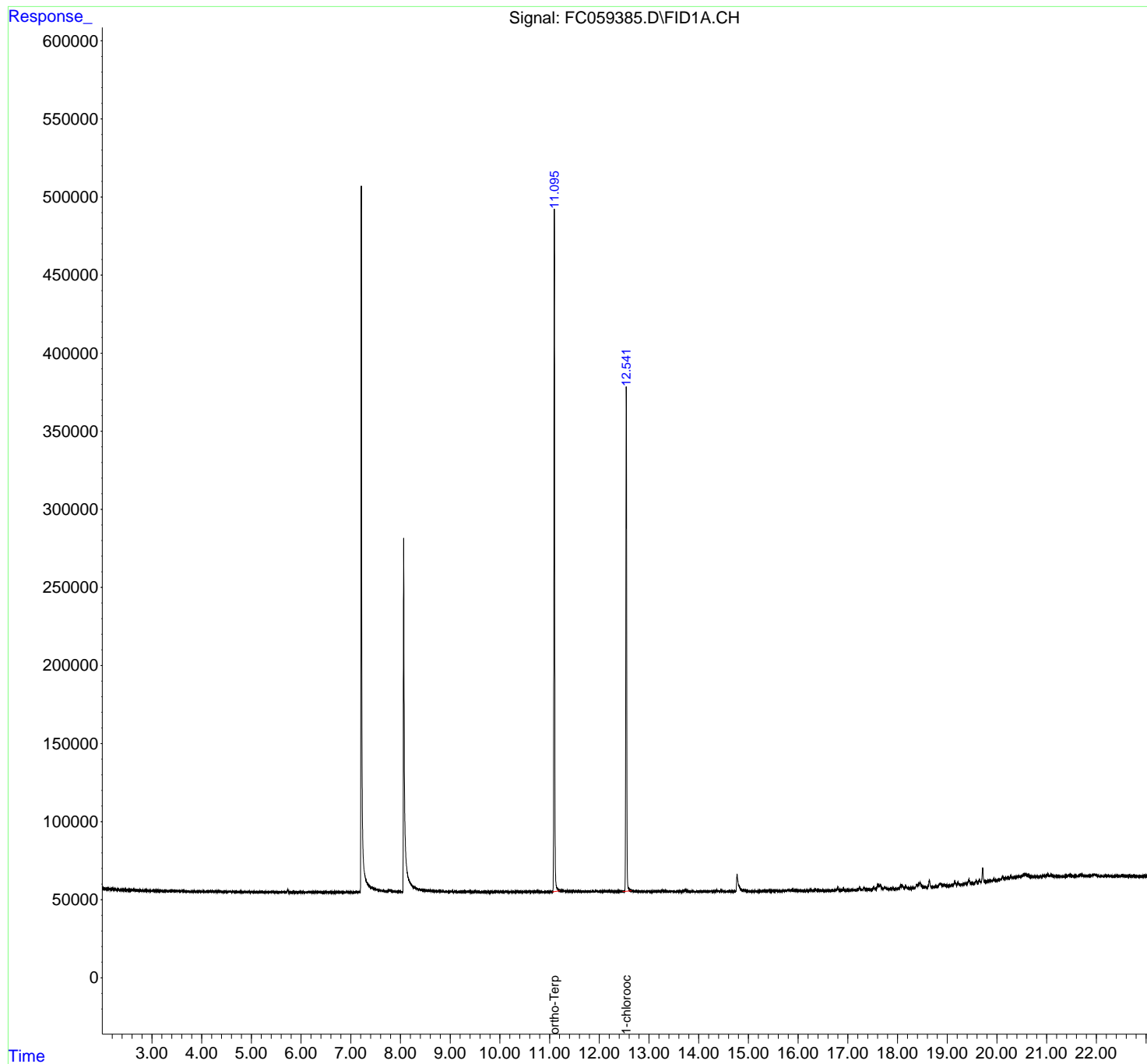
(m)=manual int.

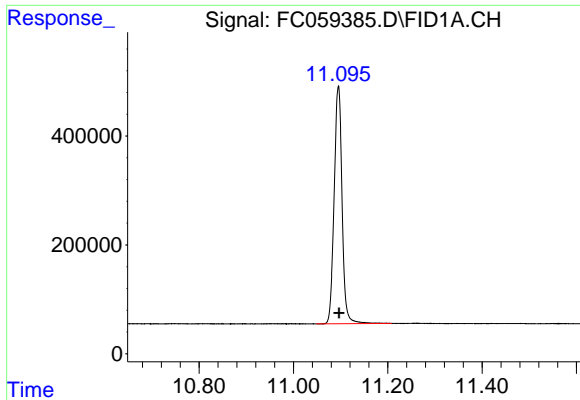
Data Path : Z:\pestpcbsrv\HPCHEM1\FID_C\Data\FC042222AL\
Data File : FC059385.D
Signal(s) : FID1A.CH
Acq On : 23 Apr 2022 9:15
Operator : UA/NP
Sample : N2487-05
Misc :
ALS Vial : 34 Sample Multiplier: 1

Instrument :
FID_C
ClientSampleId :
UST-1-W

Integration File: sample.E
Quant Time: Apr 25 01:32:00 2022
Quant Method : Z:\pestpcbsrv\HPCHEM1\FID_C\Method\Aliphatic EPH 042122.M
Quant Title : GC Extractables
QLast Update : Thu Apr 21 17:30:29 2022
Response via : Initial Calibration
Integrator: ChemStation 6890 Scale Mode: Large solvent peaks clipped

Volume Inj. : 1 ul
Signal Phase : Rxi-1ms
Signal Info : 20M x 0.18mm x 0.18um

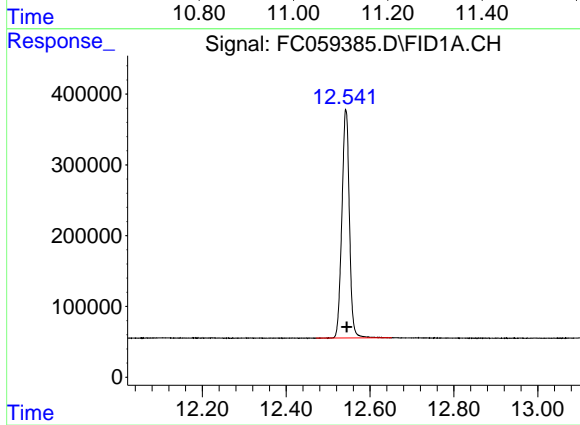




#9 ortho-Terphenyl (SURR)

R.T.: 11.095 min
Delta R.T.: -0.002 min
Response: 5099460
Conc: 31.73 ug/ml

Instrument :
FID_C
ClientSampleId :
UST-1-W



#12 1-chlorooctadecane (SURR)

R.T.: 12.542 min
Delta R.T.: -0.002 min
Response: 4018122
Conc: 30.77 ug/ml