

Data Path : Z:\pestpcbsrv\HPCHEM1\ECD_L\Data\PL012023\
 Data File : PL080432.D
 Signal(s) : Signal #1: ECD1A.ch Signal #2: ECD2B.ch
 Acq On : 20 Jan 2023 21:23
 Operator : AR\AJ
 Sample : 01232-02
 Misc :
 ALS Vial : 32 Sample Multiplier: 1

Instrument :
 ECD_L
 ClientSampleId :
 B-P-17B

Integration File signal 1: autoint1.e
 Integration File signal 2: autoint2.e
 Quant Time: Jan 21 06:13:55 2023
 Quant Method : Z:\pestpcbsrv\HPCHEM1\ECD_L\methods\PL012023.M
 Quant Title : GC Extractables
 QLast Update : Fri Jan 20 17:01:11 2023
 Response via : Initial Calibration
 Integrator: ChemStation

Volume Inj. : 1 µl
 Signal #1 Phase : ZB-MR2 Signal #2 Phase: ZB-MR1
 Signal #1 Info : 30M x 0.32mm x0.2 Signal #2 Info : 30M x 0.32mm x0.5µm

Compound	RT#1	RT#2	Resp#1	Resp#2	ng/ml	ng/ml

System Monitoring Compounds						
1) SA Tetrachlo...	3.351	2.689	43291636	44192249	20.184	20.120
28) SA Decachlor...	8.789	7.838	34695360	45936585	19.817	19.281

Target Compounds

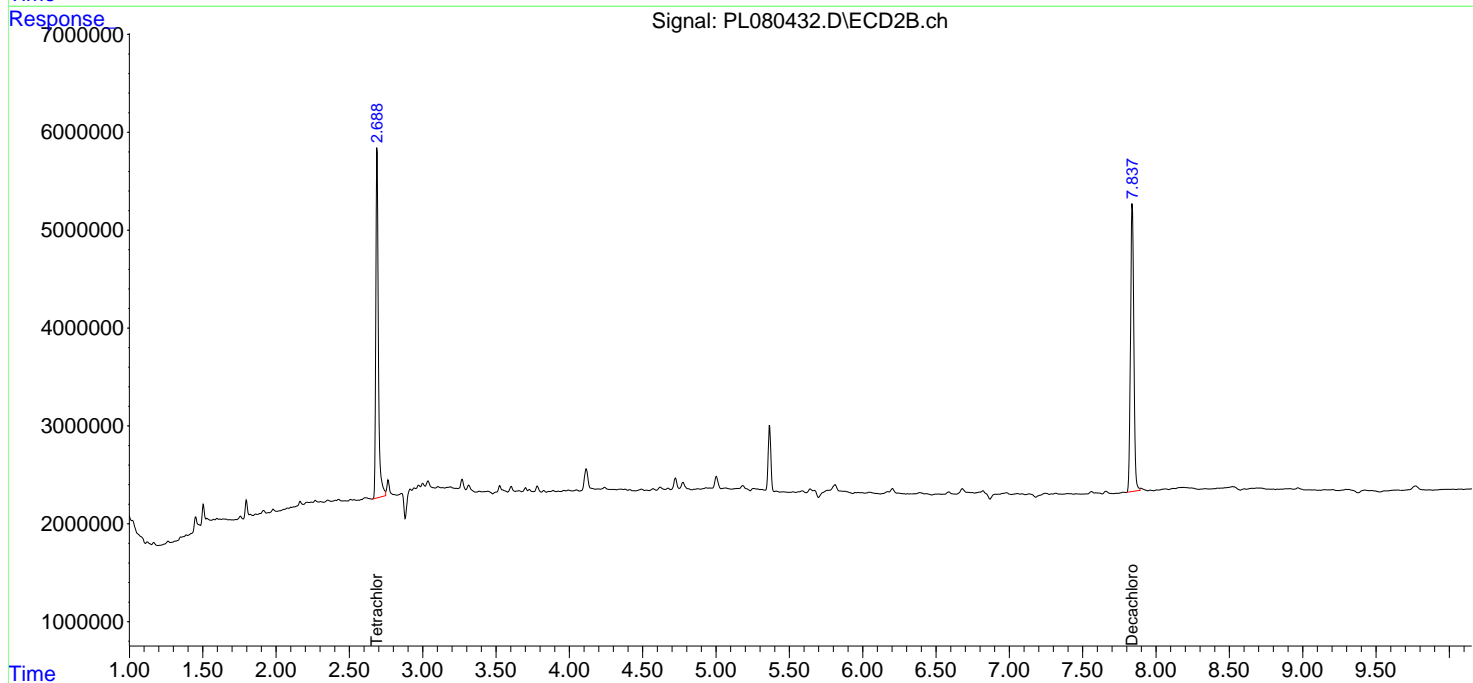
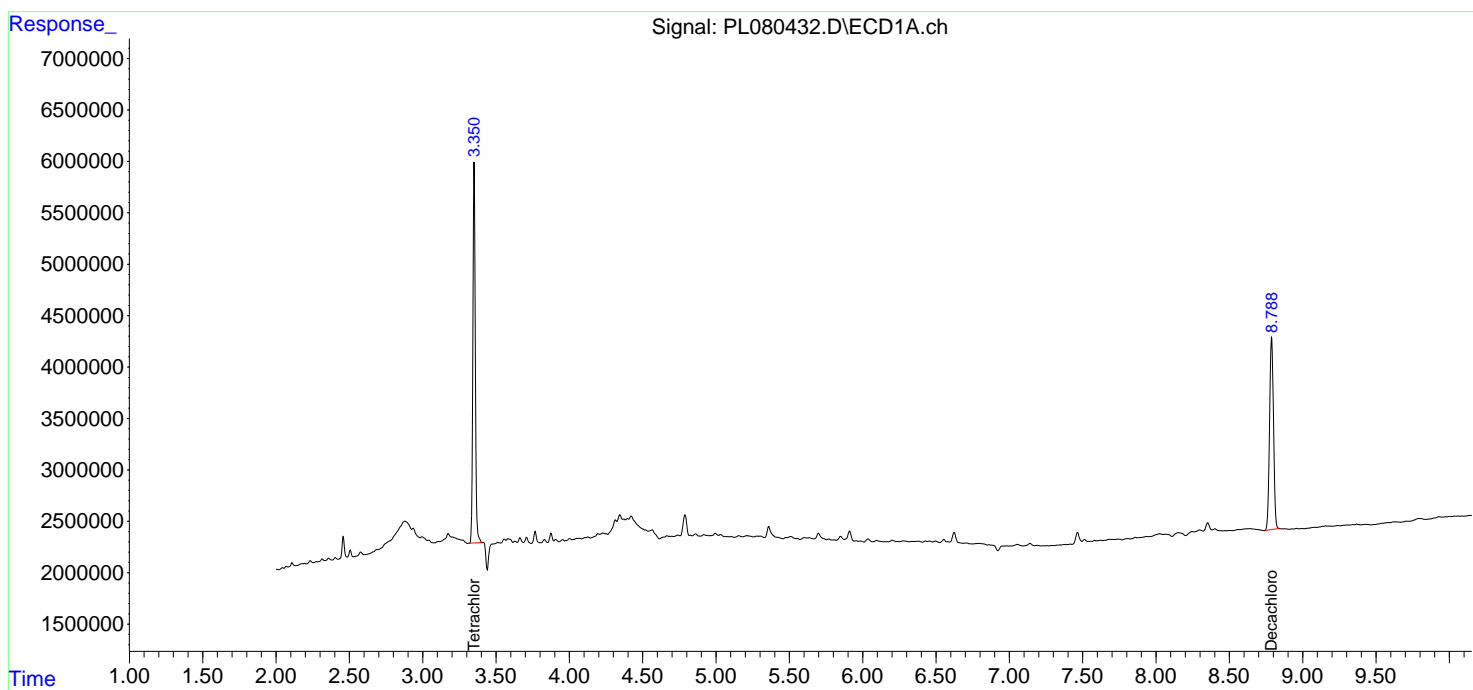
 (f)=RT Delta > 1/2 Window (#)=Amounts differ by > 25% (m)=manual int.

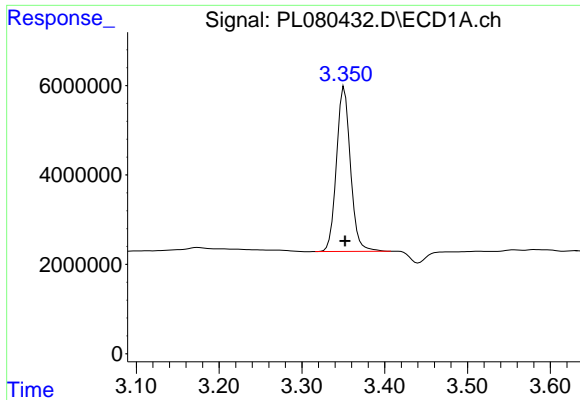
Data Path : Z:\pestpcbsrv\HPCHEM1\ECD_L\Data\PL012023\
 Data File : PL080432.D
 Signal(s) : Signal #1: ECD1A.ch Signal #2: ECD2B.ch
 Acq On : 20 Jan 2023 21:23
 Operator : AR\AJ
 Sample : 01232-02
 Misc :
 ALS Vial : 32 Sample Multiplier: 1

Instrument :
 ECD_L
 ClientSampleId :
 B-P-17B

Integration File signal 1: autoint1.e
 Integration File signal 2: autoint2.e
 Quant Time: Jan 21 06:13:55 2023
 Quant Method : Z:\pestpcbsrv\HPCHEM1\ECD_L\methods\PL012023.M
 Quant Title : GC Extractables
 QLast Update : Fri Jan 20 17:01:11 2023
 Response via : Initial Calibration
 Integrator: ChemStation

Volume Inj. : 1 µl
 Signal #1 Phase : ZB-MR2 Signal #2 Phase: ZB-MR1
 Signal #1 Info : 30M x 0.32mm x0.2 Signal #2 Info : 30M x 0.32mm x0.5µm

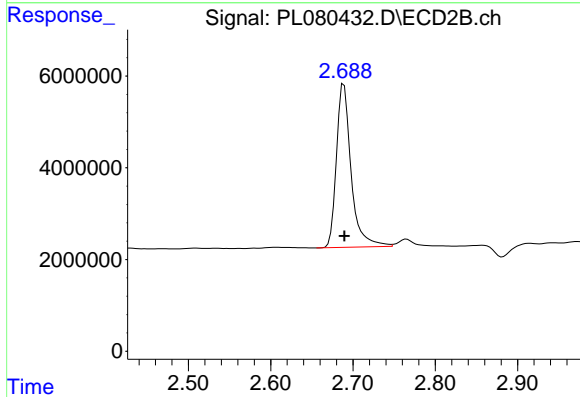




#1 Tetrachloro-m-xylene

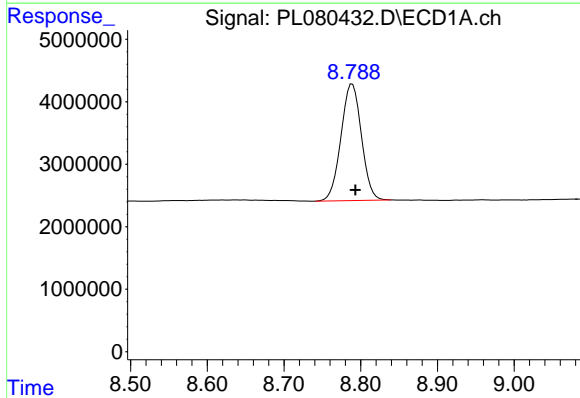
R.T.: 3.351 min
 Delta R.T.: 0.000 min
 Response: 43291636
 Conc: 20.18 ng/ml

Instrument :
 ECD_L
 ClientSampleId :
 B-P-17B



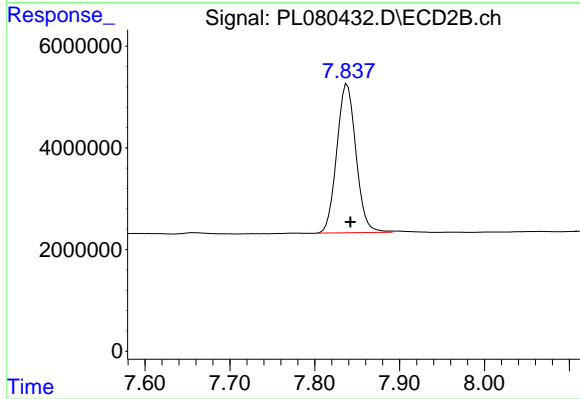
#1 Tetrachloro-m-xylene

R.T.: 2.689 min
 Delta R.T.: 0.000 min
 Response: 44192249
 Conc: 20.12 ng/ml



#28 Decachlorobiphenyl

R.T.: 8.789 min
 Delta R.T.: -0.004 min
 Response: 34695360
 Conc: 19.82 ng/ml



#28 Decachlorobiphenyl

R.T.: 7.838 min
 Delta R.T.: -0.004 min
 Response: 45936585
 Conc: 19.28 ng/ml