

Data Path : Z:\pestpcbsrv\HPCHEM1\ECD_P\Data\PP012023\
 Data File : PP054793.D
 Signal(s) : Signal #1: ECD1A.ch Signal #2: ECD2B.ch
 Acq On : 21 Jan 2023 01:54
 Operator : YP\AJ
 Sample : I.BLK
 Misc :
 ALS Vial : 2 Sample Multiplier: 1

Instrument :
 ECD_P
 ClientSampleId :
 I.BLK

Integration File signal 1: autoint1.e
 Integration File signal 2: autoint2.e
 Quant Time: Jan 21 05:58:48 2023
 Quant Method : Z:\pestpcbsrv\HPCHEM1\ECD_P\methods\PP011723.M
 Quant Title : GC EXTRACTABLES
 QLast Update : Wed Jan 18 04:34:06 2023
 Response via : Initial Calibration
 Integrator: ChemStation

Volume Inj. : 2 µl
 Signal #1 Phase : ZB-MR1 Signal #2 Phase: ZB-MR2
 Signal #1 Info : 30Mx0.32mmx 0.50µ Signal #2 Info : 30M x 0.32mm x 0.25µm

Compound	RT#1	RT#2	Resp#1	Resp#2	ng/ml	ng/ml

System Monitoring Compounds						
1) SA Tetrachlo...	4.332	3.579	42392541	33684171	23.088	21.043
2) SA Decachlor...	10.092	8.598	31537390	34541353	23.496	24.120

Target Compounds

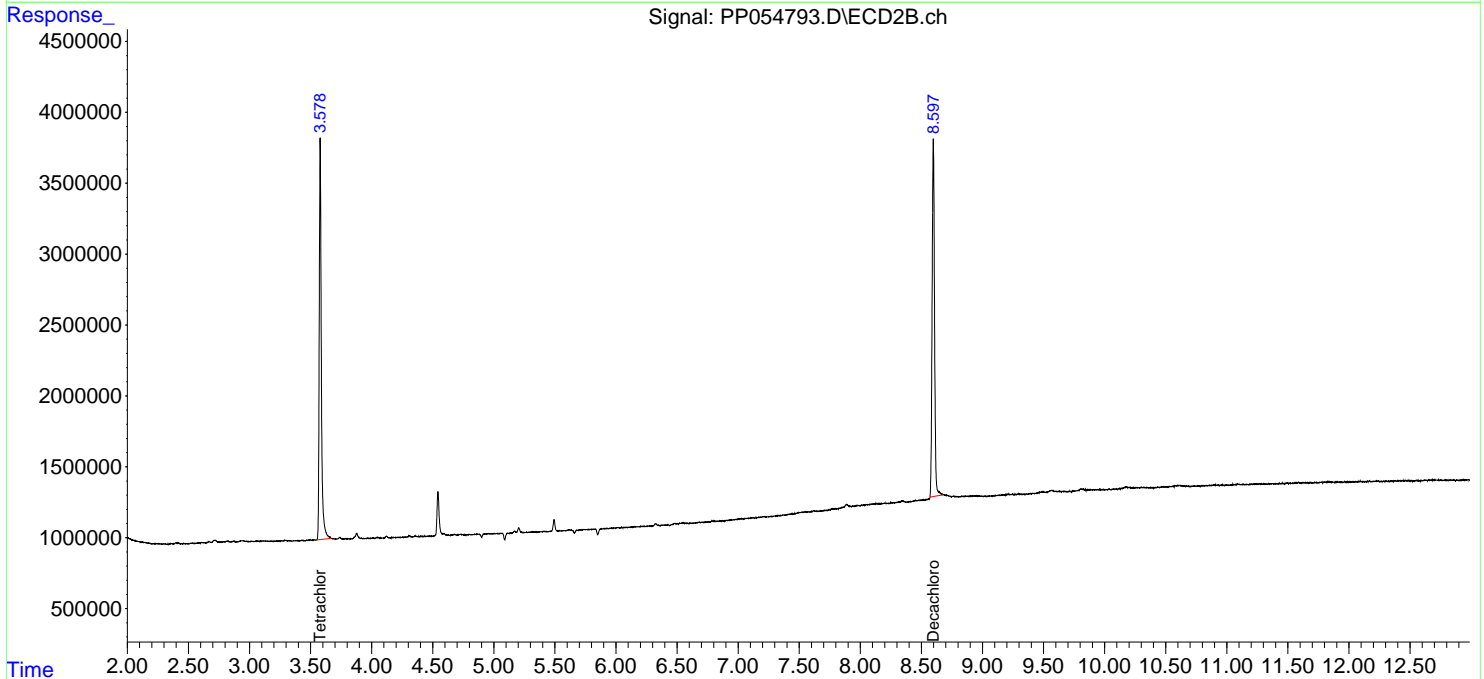
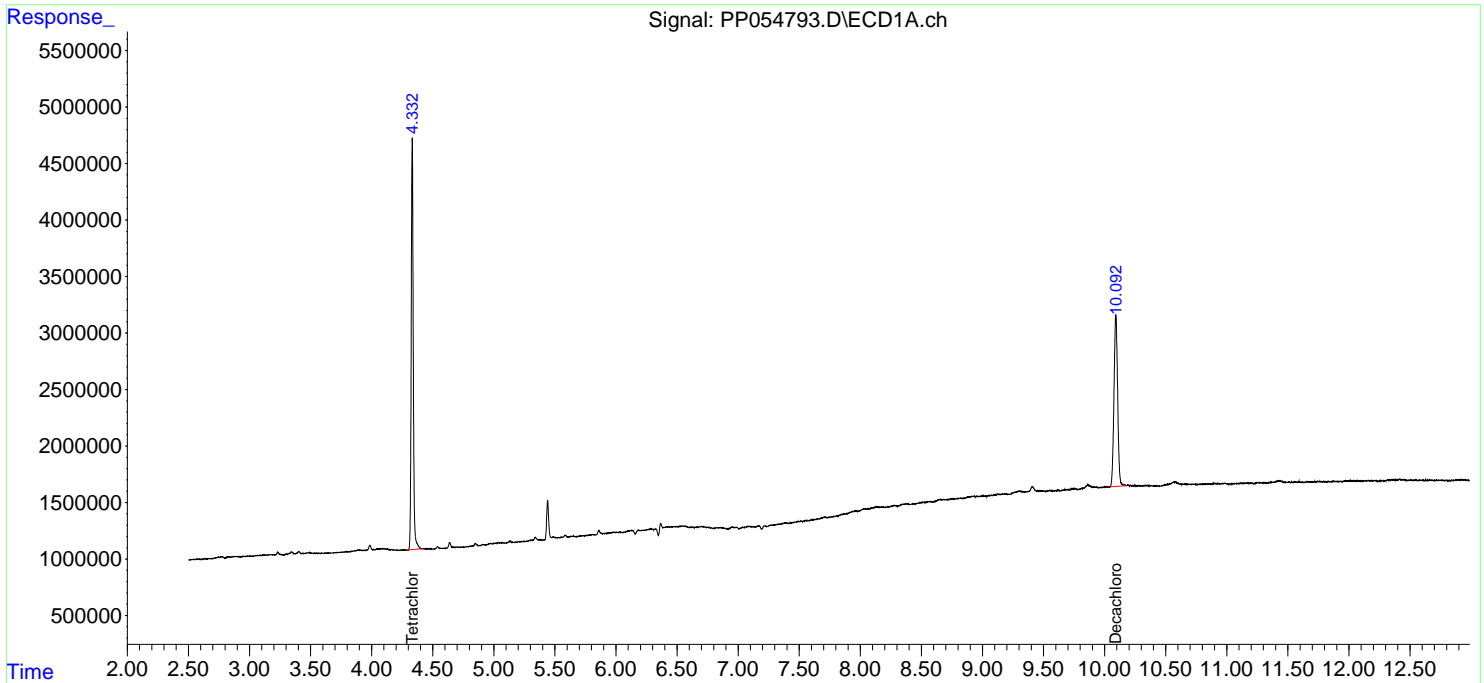
(f)=RT Delta > 1/2 Window (#)=Amounts differ by > 25% (m)=manual int.

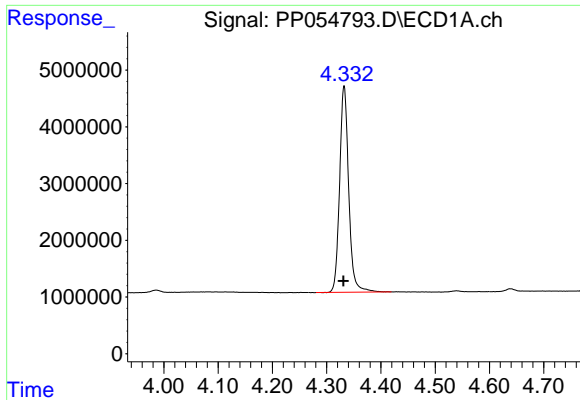
Data Path : Z:\pestpcbsrv\HPCHEM1\ECD_P\Data\PP012023\
 Data File : PP054793.D
 Signal(s) : Signal #1: ECD1A.ch Signal #2: ECD2B.ch
 Acq On : 21 Jan 2023 01:54
 Operator : YP\AJ
 Sample : I.BLK
 Misc :
 ALS Vial : 2 Sample Multiplier: 1

Instrument :
 ECD_P
 ClientSampleId :
 I.BLK

Integration File signal 1: autoint1.e
 Integration File signal 2: autoint2.e
 Quant Time: Jan 21 05:58:48 2023
 Quant Method : Z:\pestpcbsrv\HPCHEM1\ECD_P\methods\PP011723.M
 Quant Title : GC EXTRACTABLES
 QLast Update : Wed Jan 18 04:34:06 2023
 Response via : Initial Calibration
 Integrator: ChemStation

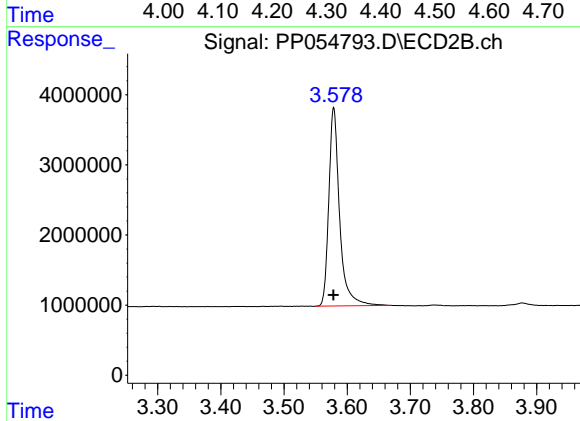
Volume Inj. : 2 µl
 Signal #1 Phase : ZB-MR1 Signal #2 Phase: ZB-MR2
 Signal #1 Info : 30Mx0.32mmx 0.50µ Signal #2 Info : 30M x 0.32mm x 0.25µm



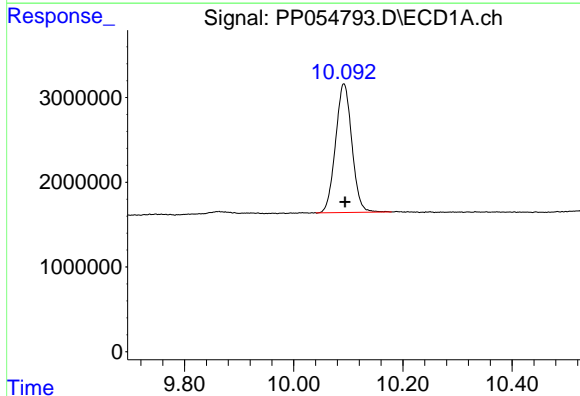


#1 Tetrachloro-m-xylene
R.T.: 4.332 min
Delta R.T.: 0.001 min
Response: 42392541
Conc: 23.09 ng/ml

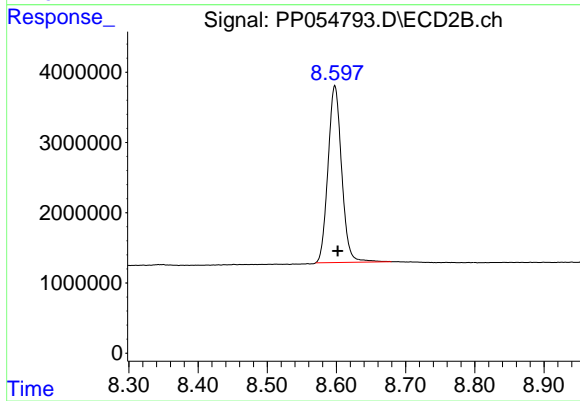
Instrument :
ECD_P
ClientSampleId :
I.BLK



#1 Tetrachloro-m-xylene
R.T.: 3.579 min
Delta R.T.: 0.000 min
Response: 33684171
Conc: 21.04 ng/ml



#2 Decachlorobiphenyl
R.T.: 10.092 min
Delta R.T.: -0.002 min
Response: 31537390
Conc: 23.50 ng/ml



#2 Decachlorobiphenyl
R.T.: 8.598 min
Delta R.T.: -0.004 min
Response: 34541353
Conc: 24.12 ng/ml