

Data Path : Z:\pestpcbsrv\HPCHEM1\ECD\_P\Data\PP012023\  
 Data File : PP054772.D  
 Signal(s) : Signal #1: ECD1A.ch Signal #2: ECD2B.ch  
 Acq On : 20 Jan 2023 19:15  
 Operator : YP\AJ  
 Sample : PB150332BL  
 Misc :  
 ALS Vial : 7 Sample Multiplier: 1

**Instrument :**  
 ECD\_P  
**ClientSampleId :**  
 PB150332BL

Integration File signal 1: autoint1.e  
 Integration File signal 2: autoint2.e  
 Quant Time: Jan 21 05:46:18 2023  
 Quant Method : Z:\pestpcbsrv\HPCHEM1\ECD\_P\methods\PP011723.M  
 Quant Title : GC EXTRACTABLES  
 QLast Update : Wed Jan 18 04:34:06 2023  
 Response via : Initial Calibration  
 Integrator: ChemStation

Volume Inj. : 2 µl  
 Signal #1 Phase : ZB-MR1 Signal #2 Phase: ZB-MR2  
 Signal #1 Info : 30Mx0.32mmx 0.50µ Signal #2 Info : 30M x 0.32mm x 0.25µm

Compound	RT#1	RT#2	Resp#1	Resp#2	ng/ml	ng/ml
-----						
System Monitoring Compounds						
1) SA Tetrachlo...	4.333	3.580	30447893	24084727	16.582	15.046
2) SA Decachlor...	10.095	8.600	23557106	23749945	17.550	16.584

Target Compounds

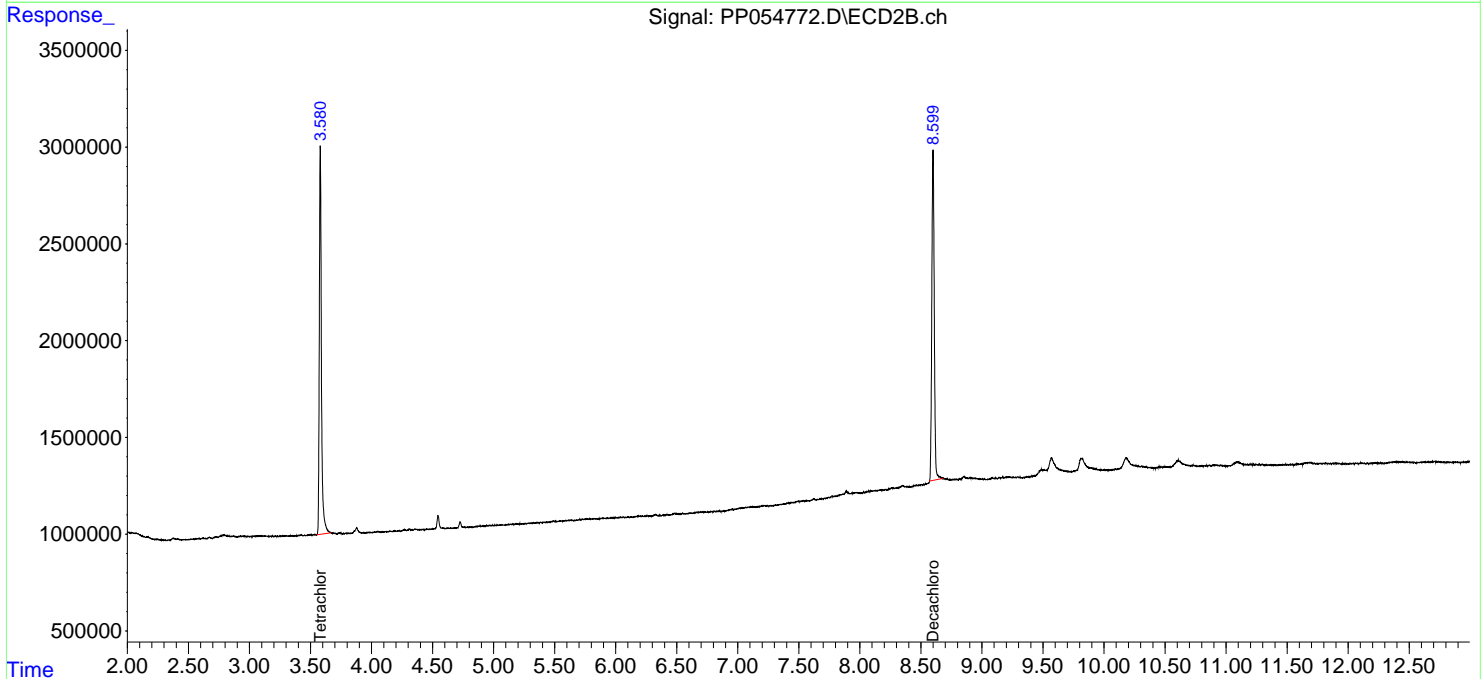
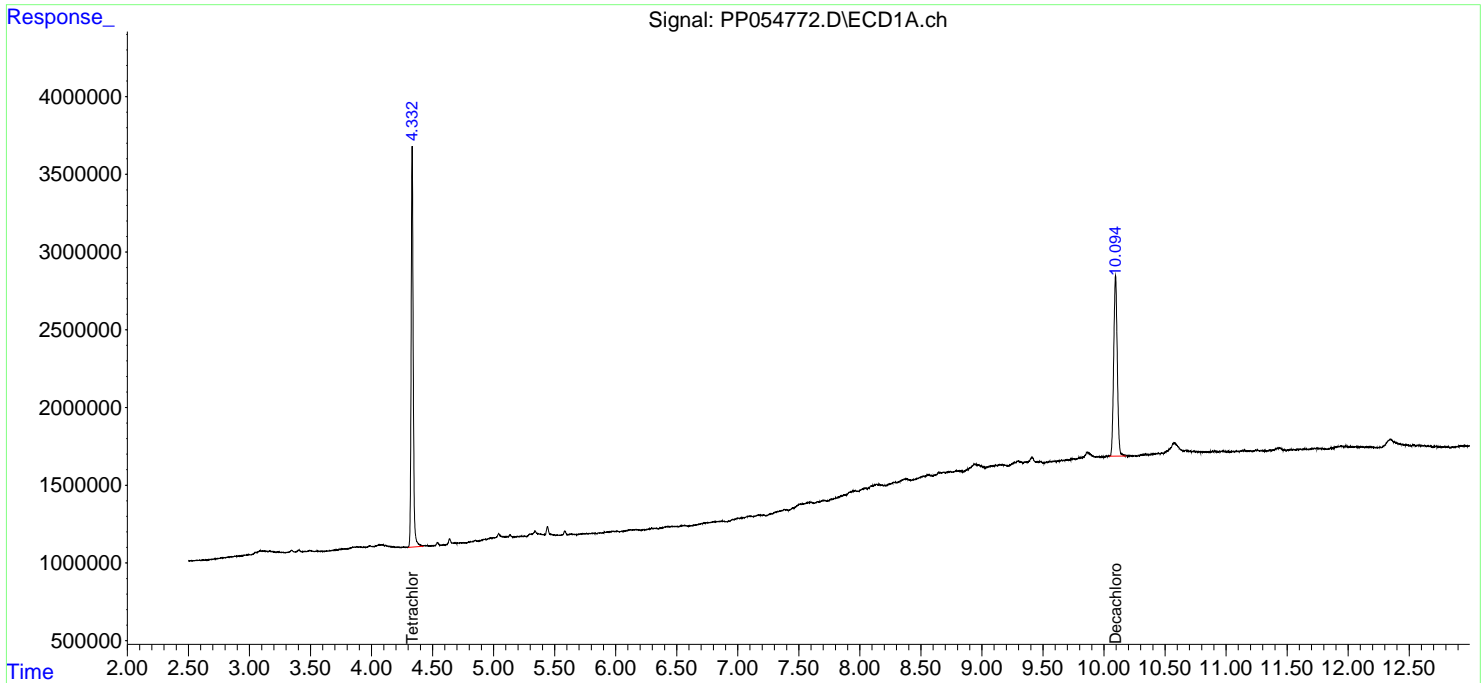
-----  
 (f)=RT Delta > 1/2 Window (#)=Amounts differ by > 25% (m)=manual int.

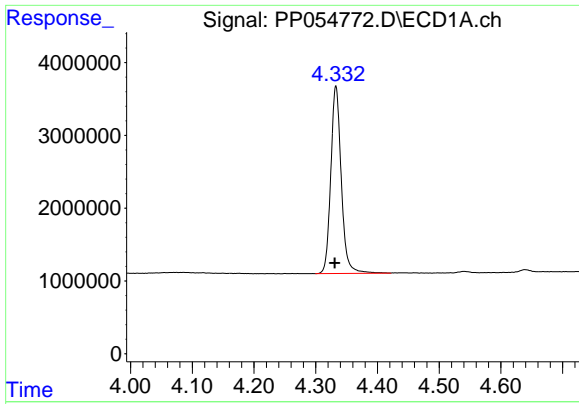
Data Path : Z:\pestpcbsrv\HPCHEM1\ECD\_P\Data\PP012023\  
 Data File : PP054772.D  
 Signal(s) : Signal #1: ECD1A.ch Signal #2: ECD2B.ch  
 Acq On : 20 Jan 2023 19:15  
 Operator : YP\AJ  
 Sample : PB150332BL  
 Misc :  
 ALS Vial : 7 Sample Multiplier: 1

Instrument :  
 ECD\_P  
 ClientSampleId :  
 PB150332BL

Integration File signal 1: autoint1.e  
 Integration File signal 2: autoint2.e  
 Quant Time: Jan 21 05:46:18 2023  
 Quant Method : Z:\pestpcbsrv\HPCHEM1\ECD\_P\methods\PP011723.M  
 Quant Title : GC EXTRACTABLES  
 QLast Update : Wed Jan 18 04:34:06 2023  
 Response via : Initial Calibration  
 Integrator: ChemStation

Volume Inj. : 2 µl  
 Signal #1 Phase : ZB-MR1 Signal #2 Phase: ZB-MR2  
 Signal #1 Info : 30Mx0.32mmx 0.50µ Signal #2 Info : 30M x 0.32mm x 0.25µm

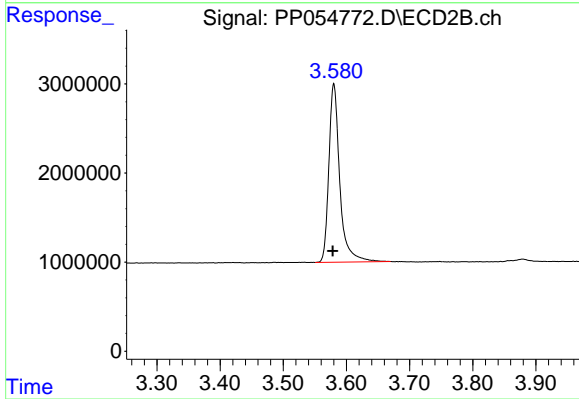




#1 Tetrachloro-m-xylene

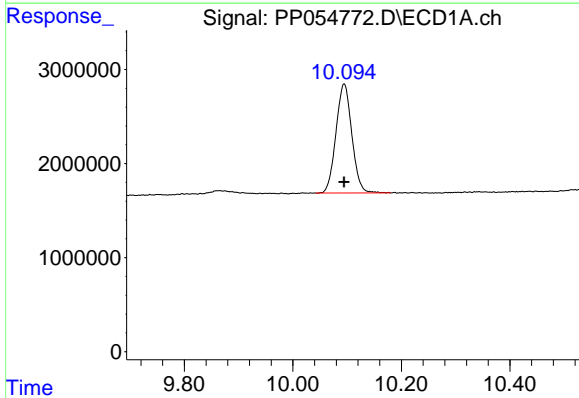
R.T.: 4.333 min  
 Delta R.T.: 0.002 min  
 Response: 30447893  
 Conc: 16.58 ng/ml

Instrument :  
 ECD\_P  
 ClientSampleId :  
 PB150332BL



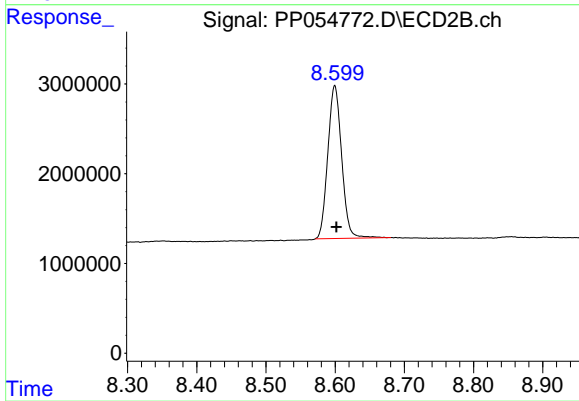
#1 Tetrachloro-m-xylene

R.T.: 3.580 min  
 Delta R.T.: 0.002 min  
 Response: 24084727  
 Conc: 15.05 ng/ml



#2 Decachlorobiphenyl

R.T.: 10.095 min  
 Delta R.T.: 0.000 min  
 Response: 23557106  
 Conc: 17.55 ng/ml



#2 Decachlorobiphenyl

R.T.: 8.600 min  
 Delta R.T.: -0.003 min  
 Response: 23749945  
 Conc: 16.58 ng/ml