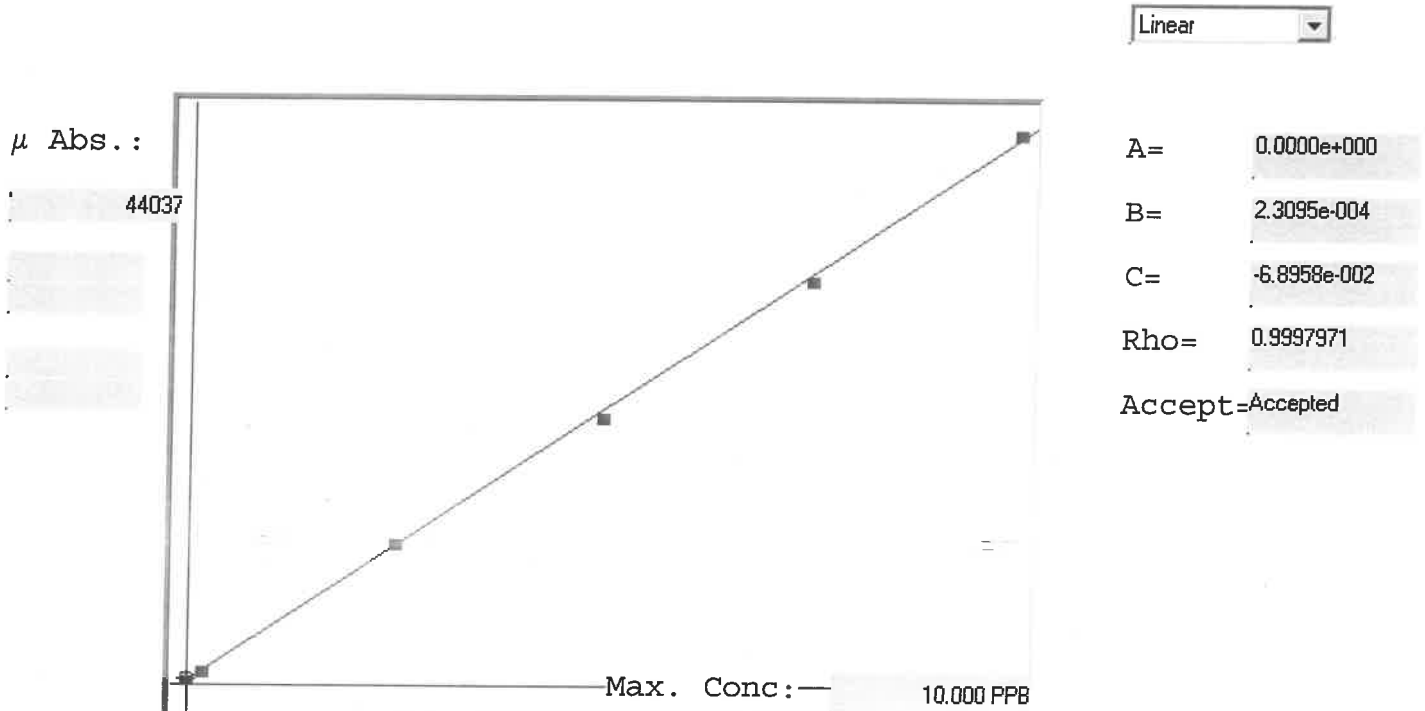


LB126505

7470A

INSTRUMENT ID: CV1



Std ID	Conc.	Calc.	Dev.	Mean	SD or %RSD	Rep 1	Rep 2	Rep 3	Rep 4	Rep 5	%D
0.0	0.000	0.037	0.037	458	0.000	458	0				1
0.2	0.200	0.206	0.006	1190	0.0 %	1190					3
2.5	2.500	2.549	0.049	11335	0.0 %	11335					2
5.0	5.000	4.889	-0.111	21469	0.0 %	21469					2
7.5	7.500	7.417	-0.083	32415	0.0 %	32415					1
10.0	10.000	10.102	0.102	44037	0.0 %	44037					1

LB126505 INSTRUMENT ID : CV1

Method: 7470A

Operator: Admin

Date of Analysis: 19 Jul 2023 09:04:32

Sample ID	Extended ID	μ Abs.	Conc.	Std Conc	Method	Units	Date	Type	Type
0.0 - 1	50	458	-	0.0000	7470A	PPB	19 Jul 2023 09:36:19	S	Std
0.2 - 1	50.2	1190	-	0.2000	7470A	PPB	19 Jul 2023 09:38:38	S	Std
2.5 - 1	52.5	11335	-	2.5000	7470A	PPB	19 Jul 2023 09:40:55	S	Std
5.0 - 1	55	21469	-	5.0000	7470A	PPB	19 Jul 2023 09:43:13	S	Std
7.5 - 1	57.5	32415	-	7.5000	7470A	PPB	19 Jul 2023 09:45:29	S	Std
10.0 - 1	510	44037	-	10.0000	7470A	PPB	19 Jul 2023 09:47:44	S	Std
ICV75 - 1	ICV75	18637	4.2353	-	7470A	PPB	19 Jul 2023 09:50:39	U	SMPL
ICB75 - 1	ICB75	156	-0.0329	-	7470A	PPB	19 Jul 2023 09:52:54	U	SMPL
CCV61 - 1	CCV61	21372	4.8670	-	7470A	PPB	19 Jul 2023 09:55:08	U	SMPL
CCB61 - 1	CCB61	183	-0.0267	-	7470A	PPB	19 Jul 2023 09:57:24	U	SMPL
CRA - 1	CRA	1145	0.1955	-	7470A	PPB	19 Jul 2023 09:59:40	U	SMPL
HighStd - 1	HighStd	44434	10.1933	-	7470A	PPB	19 Jul 2023 10:01:55	U	SMPL
ChkStd - 1	ChkStd	30652	7.0103	-	7470A	PPB	19 Jul 2023 10:04:10	U	SMPL
PB154279BL - 1	PBW	409	0.0255	-	7470A	PPB	19 Jul 2023 10:06:26	U	SMPL
PB154279BS - 1	LCSW	15791	3.5780	-	7470A	PPB	19 Jul 2023 10:08:42	U	SMPL
O3637-01 - 1	A508	12967	2.9258	-	7470A	PPB	19 Jul 2023 10:11:00	U	SMPL
O3637-01DUP - 1	A508DUP	11053	2.4838	-	7470A	PPB	19 Jul 2023 10:13:16	U	SMPL
O3637-01MS - 1	A508MS	27870	6.3677	-	7470A	PPB	19 Jul 2023 10:15:39	U	SMPL
O3637-01MSD - 1	A508MSD	27991	6.3957	-	7470A	PPB	19 Jul 2023 10:17:59	U	SMPL
O3645-08 - 1	RINSATE-BLANK	273	-0.0059	-	7470A	PPB	19 Jul 2023 10:20:15	U	SMPL
CCV62 - 1	CCV62	21403	4.8742	-	7470A	PPB	19 Jul 2023 10:22:32	U	SMPL
CCB62 - 1	CCB62	237	-0.0142	-	7470A	PPB	19 Jul 2023 10:24:49	U	SMPL
O3637-01LX5 - 1		2369	0.4782	-	7470A	PPB	19 Jul 2023 10:27:04	U	SMPL
O3637-01A - 1		29083	6.6479	-	7470A	PPB	19 Jul 2023 10:29:19	U	SMPL
CCV63 - 1	CCV63	21530	4.9035	-	7470A	PPB	19 Jul 2023 10:31:34	U	SMPL
CCB63 - 1	CCB63	217	-0.0188	-	7470A	PPB	19 Jul 2023 10:33:51	U	SMPL