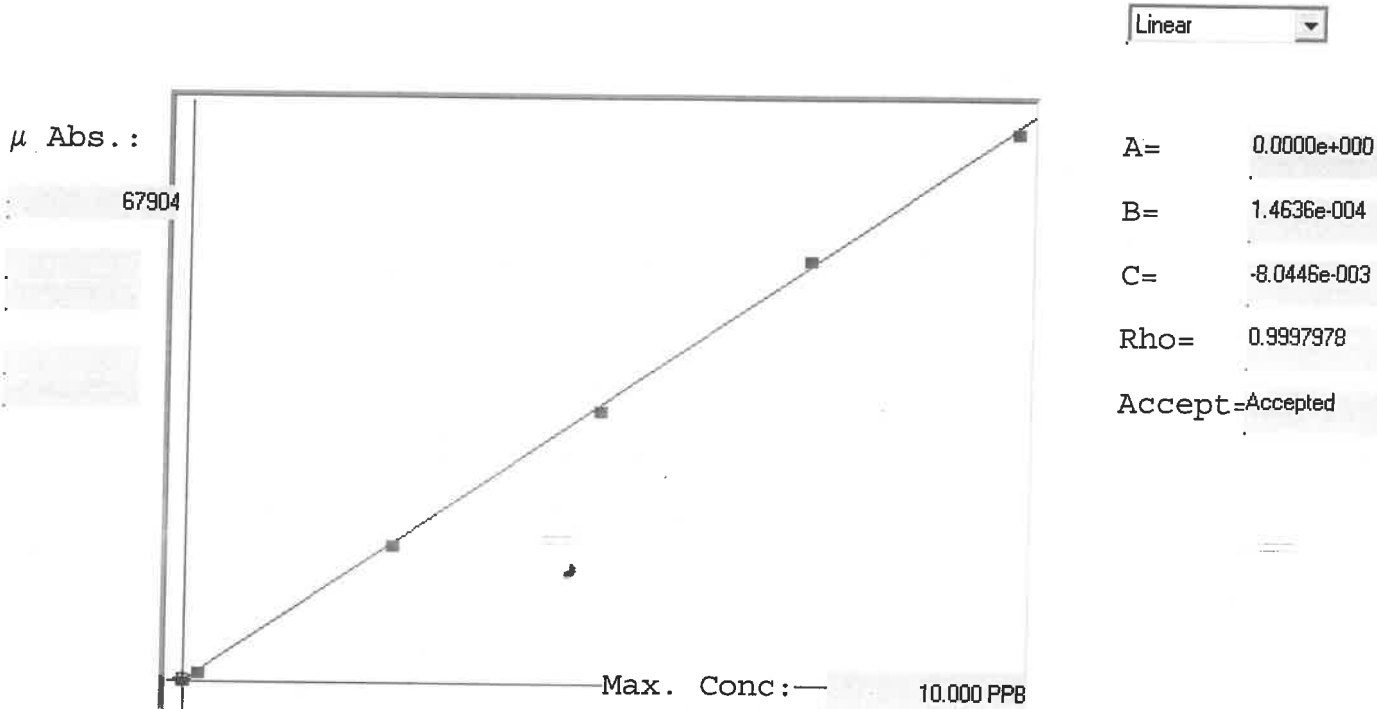


LB126507

7471B

INSTRUMENT ID: EV1



Std ID	Conc.	Calc.	Dev.	Mean	SD or %RSD	Rep 1	Rep 2	Rep 3	Rep 4	Rep 5	
0.0	0.000	0.042	0.042	339	0.000	339					0.10
0.2	0.200	0.177	-0.023	1264	0.0 %	1264					-12
2.5	2.500	2.478	-0.022	16985	0.0 %	16985					-1
5.0	5.000	4.930	-0.070	33742	0.0 %	33742					-1
7.5	7.500	7.643	0.143	52279	0.0 %	52279					-2
10.0	10.000	9.930	-0.070	67904	0.0 %	67904					-1

LB126507 INSTRUMENT ID : CV1

Method: 7471B

Operator: Admin

Date of Analysis: 19 Jul 2023 11:24:06

Sample ID	Extended ID	μ Abs.	Conc.	Std CondMethod	Units	Date	Type	Type
0.0 - 1	50	339	-	0.00007471B	PPB	19 Jul 2023 11:32:21	S	Std
0.2 - 1	50.2	1264	-	0.20007471B	PPB	19 Jul 2023 11:34:37	S	Std
2.5 - 1	52.5	16985	-	2.50007471B	PPB	19 Jul 2023 11:36:55	S	Std
5.0 - 1	55	33742	-	5.00007471B	PPB	19 Jul 2023 11:39:12	S	Std
7.5 - 1	57.5	52279	-	7.50007471B	PPB	19 Jul 2023 11:44:10	S	Std
10.0 - 1	510	67904	-	10.00007471B	PPB	19 Jul 2023 11:46:26	S	Std
ICV76 - 1	ICV76	28355	4.1419	-7471B	PPB	19 Jul 2023 11:49:14	U	SMPL
ICB76 - 1	ICB76	173	0.0173	-7471B	PPB	19 Jul 2023 11:51:28	U	SMPL
CCV64 - 1	CCV64	33151	4.8438	-7471B	PPB	19 Jul 2023 11:53:43	U	SMPL
CCB64 - 1	CCB64	171	0.0170	-7471B	PPB	19 Jul 2023 11:55:58	U	SMPL
CRA - 1	CRA	1245	0.1742	-7471B	PPB	19 Jul 2023 11:58:14	U	SMPL
HighStd - 1	HighStd	67557	9.8793	-7471B	PPB	19 Jul 2023 12:00:29	U	SMPL
ChkStd - 1	ChkStd	47342	6.9207	-7471B	PPB	19 Jul 2023 12:05:33	U	SMPL
PB154277BL - 1	PBS	-7	-0.0091	-7471B	PPB	19 Jul 2023 12:07:48	U	SMPL
PB154277BS - 1	LCSS	26066	3.8069	-7471B	PPB	19 Jul 2023 12:10:06	U	SMPL
O3638-01 - 1	TP1	8527	1.2399	-7471B	PPB	19 Jul 2023 12:12:22	U	SMPL
O3638-01DUP - 1	TP1DUP	8138	1.1830	-7471B	PPB	19 Jul 2023 12:14:38	U	SMPL
O3638-01MS - 1	TP1MS	36230	5.2944	-7471B	PPB	19 Jul 2023 12:16:54	U	SMPL
O3638-01MSD - 1	TP1MSD	33099	4.8362	-7471B	PPB	19 Jul 2023 12:19:11	U	SMPL
O3638-11 - 1	TP2	73607	10.7648	-7471B	PPB	19 Jul 2023 12:21:27	U	SMPL
CCV65 - 1	CCV65	33287	4.8637	-7471B	PPB	19 Jul 2023 12:23:42	U	SMPL
CCB65 - 1	CCB65	183	0.0187	-7471B	PPB	19 Jul 2023 12:25:59	U	SMPL
O3638-21 - 1	TP6	8600	1.2506	-7471B	PPB	19 Jul 2023 12:28:14	U	SMPL
O3638-31 - 1	TP7	3915	0.5649	-7471B	PPB	19 Jul 2023 12:30:29	U	SMPL
O3639-01 - 1	TP3	5498	0.7966	-7471B	PPB	19 Jul 2023 12:32:44	U	SMPL
O3639-11 - 1	TP4	4307	0.6223	-7471B	PPB	19 Jul 2023 12:34:59	U	SMPL
O3639-21 - 1	TP5	2200	0.3139	-7471B	PPB	19 Jul 2023 12:37:15	U	SMPL
O3639-31 - 1	TP10	2584	0.3701	-7471B	PPB	19 Jul 2023 12:39:31	U	SMPL
O3640-01 - 1	TP9	3109	0.4470	-7471B	PPB	19 Jul 2023 12:41:48	U	SMPL
O3640-11 - 1	TP8	4125	0.5957	-7471B	PPB	19 Jul 2023 12:44:05	U	SMPL
O3640-21 - 1	TP12	8828	1.2840	-7471B	PPB	19 Jul 2023 12:46:22	U	SMPL
O3640-31 - 1	TP11	8550	1.2433	-7471B	PPB	19 Jul 2023 12:48:37	U	SMPL
CCV66 - 1	CCV66	33365	4.8751	-7471B	PPB	19 Jul 2023 12:50:52	U	SMPL
CCB66 - 1	CCB66	180	0.0183	-7471B	PPB	19 Jul 2023 12:53:08	U	SMPL
O3641-01 - 1	TP13	3222	0.4635	-7471B	PPB	19 Jul 2023 12:55:25	U	SMPL
O3641-11 - 1	TP14	4380	0.6330	-7471B	PPB	19 Jul 2023 12:57:40	U	SMPL
O3641-21 - 1	TP16	1515	0.2137	-7471B	PPB	19 Jul 2023 12:59:55	U	SMPL
O3641-31 - 1	TP15	3203	0.4607	-7471B	PPB	19 Jul 2023 13:02:11	U	SMPL
PB154278BL - 1	PBS	40	-0.0022	-7471B	PPB	19 Jul 2023 13:04:26	U	SMPL
PB154278BS - 1	LCSS	25283	3.6923	-7471B	PPB	19 Jul 2023 13:06:43	U	SMPL
O3645-01 - 1	SB-02-(3-5)	8016	1.1651	-7471B	PPB	19 Jul 2023 13:08:59	U	SMPL
O3645-02 - 1	SB-04-(1-5)	416001	HIGH	-7471B	PPB	19 Jul 2023 13:11:16	X	
O3645-02DUP - 1	SB-04-(1-5)DUP	470209	HIGH	-7471B	PPB	19 Jul 2023 13:13:05	X	
O3645-03 - 1	SB-07-(1-3)	7255	1.0538	-7471B	PPB	19 Jul 2023 13:14:55	U	SMPL
CCV67 - 1	CCV67	33624	4.9130	-7471B	PPB	19 Jul 2023 13:17:13	U	SMPL
CCB67 - 1	CCB67	121	0.0097	-7471B	PPB	19 Jul 2023 13:19:28	U	SMPL
O3645-04 - 1	SB-08-(10.5-2.0)	131395	19.2224	-7471B	PPB	19 Jul 2023 13:21:43	U	SMPL
O3645-05 - 1	SB-09-(2.0-4.0)	21697	3.1674	-7471B	PPB	19 Jul 2023 13:23:58	U	SMPL
O3645-06 - 1	SB-10-(0.5-2.0)	1656084	HIGH	-7471B	PPB	19 Jul 2023 13:26:16	X	
O3645-07 - 1	DUP	4411	0.6375	-7471B	PPB	19 Jul 2023 13:28:03	U	SMPL
O3645-09 - 1	O3645-02MS	536504	HIGH	-7471B	PPB	19 Jul 2023 13:32:09	X	
O3645-10 - 1	O3645-02MSD	418918	HIGH	-7471B	PPB	19 Jul 2023 13:33:59	X	
O3646-01 - 1	GATE-1	6473	0.9393	-7471B	PPB	19 Jul 2023 13:35:50	U	SMPL
O3646-04 - 1	YARD-1	4535	0.6557	-7471B	PPB	19 Jul 2023 13:38:09	U	SMPL
O3647-01 - 1	SAMPLE-1	2665	0.3820	-7471B	PPB	19 Jul 2023 13:40:25	U	SMPL
O3648-01 - 1	OK-01-071723	615	0.0820	-7471B	PPB	19 Jul 2023 13:42:40	U	SMPL
CCV68 - 1	CCV68	33953	4.9612	-7471B	PPB	19 Jul 2023 13:44:56	U	SMPL
CCB68 - 1	CCB68	-21	-0.0111	-7471B	PPB	19 Jul 2023 13:47:11	U	SMPL
O3652-01 - 1	TP19	1375	0.1932	-7471B	PPB	19 Jul 2023 13:49:27	U	SMPL
O3652-11 - 1	TP18	2519	0.3606	-7471B	PPB	19 Jul 2023 13:51:42	U	SMPL
O3652-21 - 1	TP17	1827	0.2593	-7471B	PPB	19 Jul 2023 13:53:57	U	SMPL
O3653-01 - 1	TP20	1068	0.1483	-7471B	PPB	19 Jul 2023 13:56:13	U	SMPL
O3653-11 - 1	TP21	766	0.1041	-7471B	PPB	19 Jul 2023 13:58:29	U	SMPL
O3653-21 - 1	TP22	1715	0.2430	-7471B	PPB	19 Jul 2023 14:00:45	U	SMPL
O3654-01 - 1	72-12016	4851	0.7019	-7471B	PPB	19 Jul 2023 14:03:01	U	SMPL
O3638-11DLX2 - 1		36528	5.3380	-7471B	PPB	19 Jul 2023 14:05:18	U	SMPL
CCV69 - 1	CCV69	34450	5.0339	-7471B	PPB	19 Jul 2023 14:07:35	U	SMPL
CCB69 - 1	CCB69	260	0.0300	-7471B	PPB	19 Jul 2023 14:09:51	U	SMPL
O3638-01LX5 - 1		1539	0.2172	-7471B	PPB	19 Jul 2023 14:12:06	U	SMPL
O3638-01A - 1		35144	5.1355	-7471B	PPB	19 Jul 2023 14:14:23	U	SMPL
O3645-02LX5 - 1		120656	17.6507	-7471B	PPB	19 Jul 2023 14:16:39	U	SMPL
O3645-02A - 1		472916	HIGH	-7471B	PPB	19 Jul 2023 14:18:55	X	
O3645-02DLX10 - 1		61487	8.9909	-7471B	PPB	19 Jul 2023 14:20:45	U	SMPL
O3645-02DUPDLX10 - 1		66575	9.7356	-7471B	PPB	19 Jul 2023 14:25:41	U	SMPL
O3645-09DLX10 - 1		64041	9.3647	-7471B	PPB	19 Jul 2023 14:27:56	U	SMPL
O3645-10DLX10 - 1		61623	9.0108	-7471B	PPB	19 Jul 2023 14:30:12	U	SMPL
O3645-02LDLX50 - 1		12498	1.8211	-7471B	PPB	19 Jul 2023 14:32:28	U	SMPL
O3645-02ADLX10 - 1		63641	9.3062	-7471B	PPB	19 Jul 2023 14:40:17	U	SMPL
CCV70 - 1	CCV70	33773	4.9348	-7471B	PPB	19 Jul 2023 14:42:34	U	SMPL
CCB70 - 1	CCB70	173	0.0173	-7471B	PPB	19 Jul 2023 14:44:50	U	SMPL
O3645-04DLX5 - 1		28944	4.2281	-7471B	PPB	19 Jul 2023 14:47:06	U	SMPL

LB126507 INSTRUMENT ID : CV1

Method: 7471B

Operator: Admin

Date of Analysis: 19 Jul 2023 11:24:06

Sample ID	Extended ID	μ Abs.	Conc.	Std Conc	Method	Units	Date	Type	Type
O3645-06DLX10 - 1		1015414	HIGH		7471B	PPB	19 Jul 2023 14:49:22	X	
O3645-06DL2X100 - 1		203836	29.8245		7471B	PPB	19 Jul 2023 14:55:11	U	SMPL
O3645-06DL2X1000 - 1		21447	3.1308		7471B	PPB	19 Jul 2023 14:57:27	U	SMPL
CCV71 - 1	CCV71	34588	5.0541		7471B	PPB	19 Jul 2023 14:59:45	U	SMPL
CCB71 - 1	CCB71	59	0.0006		7471B	PPB	19 Jul 2023 15:02:01	U	SMPL