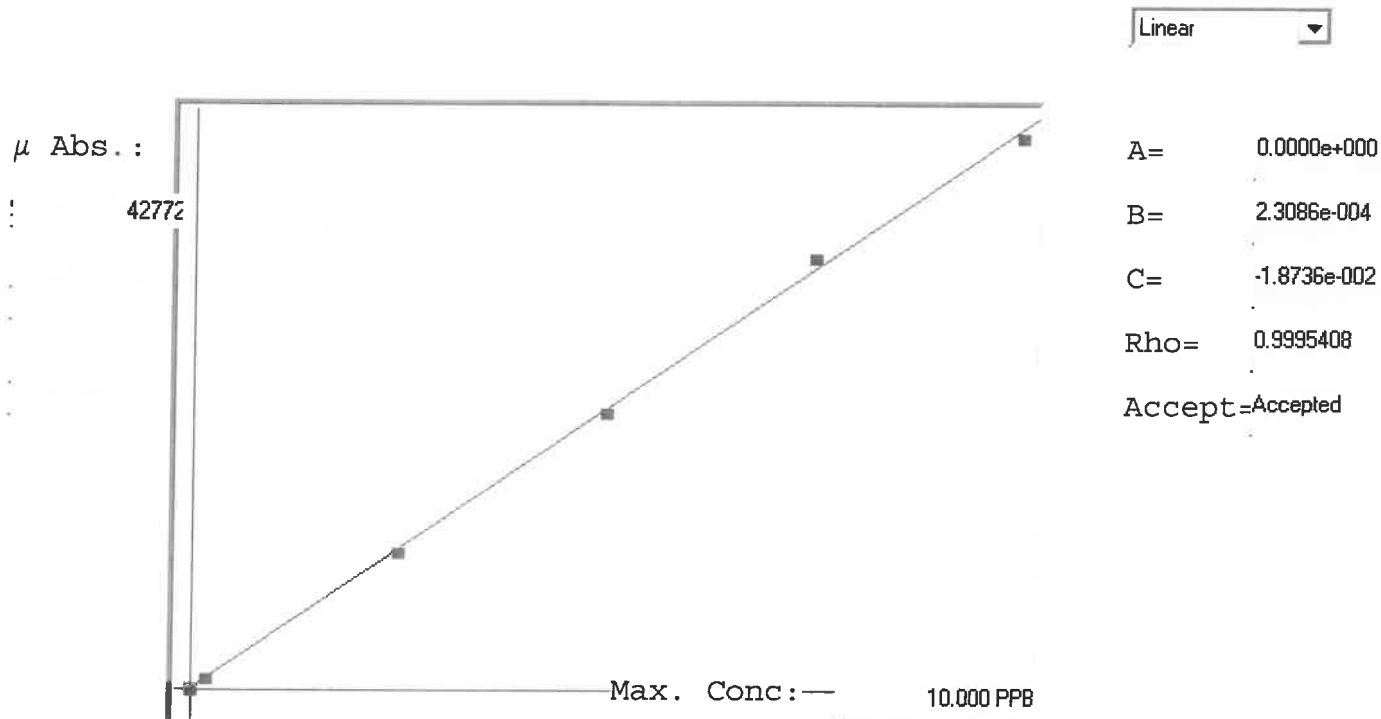


LB132914

7471B

INSTRUMENT ID : CV1



Std ID	Conc.	Calc.	Dev.	Mean	SD or %RSD	Rep 1	Rep 2	Rep 3	Rep 4	Rep 5	2.9
0.0	0.000	-0.003	-0.003	68	0.000	68					
0.2	0.200	0.199	-0.001	945	0.0 %	945					
2.5	2.500	2.474	-0.026	10797	0.0 %	10797					
5.0	5.000	4.949	-0.051	21517	0.0 %	21517					
7.5	7.500	7.725	0.225	33545	0.0 %	33545					
10.0	10.000	9.856	-0.144	42772	0.0 %	42772					

# LB132914 INSTRUMENT ID : CV1

Method: 7471B

Operator: Admin

Date of Analysis: 14 Oct 2024 09:47:34

Sample ID	Extended ID	μ Abs.	Conc.	Std Conc	Method	Units	Date	Type	Type
0.0 - 1	50	68	-	0.0000	7471B	PPB	14 Oct 2024 11:19:22	S	Std
0.2 - 1	512	945	-	0.2000	7471B	PPB	14 Oct 2024 11:21:39	S	Std
2.5 - 1	52.5	10797	-	2.5000	7471B	PPB	14 Oct 2024 11:23:55	S	Std
5.0 - 1	55	21517	-	5.0000	7471B	PPB	14 Oct 2024 11:26:12	S	Std
7.5 - 1	57.5	33545	-	7.5000	7471B	PPB	14 Oct 2024 11:28:30	S	Std
10.0 - 1	510	42772	-	10.0000	7471B	PPB	14 Oct 2024 11:30:49	S	Std
ICV36 - 1	ICV36	18497	4.2515	-	7471B	PPB	14 Oct 2024 11:33:39	U	SMPL
ICB36 - 1	ICB36	-41	-0.0282	-	7471B	PPB	14 Oct 2024 11:38:31	U	SMPL
CCV13 - 1	CCV13	21503	4.9454	-	7471B	PPB	14 Oct 2024 11:40:46	U	SMPL
CCB13 - 1	CCB13	-228	-0.0714	-	7471B	PPB	14 Oct 2024 11:43:01	U	SMPL
CRA - 1	CRA	887	0.1860	-	7471B	PPB	14 Oct 2024 11:45:19	U	SMPL
HighStd - 1	HighStd	43387	9.9976	-	7471B	PPB	14 Oct 2024 11:47:33	U	SMPL
ChkStd - 1	ChkStd	31258	7.1975	-	7471B	PPB	14 Oct 2024 11:49:49	U	SMPL
PB164114BL - 1	PBS	-62	-0.0330	-	7471B	PPB	14 Oct 2024 11:54:49	U	SMPL
PB164114BS - 1	LCSS	16853	3.8719	-	7471B	PPB	14 Oct 2024 11:57:04	U	SMPL
P4258-03 - 1	Chamberlain Ave	5472	1.2445	-	7471B	PPB	14 Oct 2024 11:59:21	U	SMPL
P4364-01 - 1	SB-01-1.0-1.5	13513	3.1009	-	7471B	PPB	14 Oct 2024 12:01:39	U	SMPL
P4364-02 - 1	SB-01-2.5-3.0	19128	4.3972	-	7471B	PPB	14 Oct 2024 12:03:59	U	SMPL
P4364-03 - 1	SB-01-4.25-4.83	23292	5.3585	-	7471B	PPB	14 Oct 2024 12:06:18	U	SMPL
P4364-04 - 1	SB-02-0.167-0.667	54725	12.6151	-	7471B	PPB	14 Oct 2024 12:08:36	U	SMPL
CCV14 - 1	CCV14	20904	4.8072	-	7471B	PPB	14 Oct 2024 12:10:54	U	SMPL
CCB14 - 1	CCB14	-237	-0.0734	-	7471B	PPB	14 Oct 2024 12:13:19	U	SMPL
P4364-05 - 1	SB-02-2.0-2.5	44233	10.1929	-	7471B	PPB	14 Oct 2024 12:15:37	U	SMPL
P4364-06 - 1	SB-02-4.5-5.0	67704	15.6114	-	7471B	PPB	14 Oct 2024 12:17:51	U	SMPL
P4364-07 - 1	SB-03-0.167-0.667	45377	10.4570	-	7471B	PPB	14 Oct 2024 12:20:18	U	SMPL
P4364-08 - 1	SB-03-2.0-2.5	12121	2.7795	-	7471B	PPB	14 Oct 2024 12:22:45	U	SMPL
P4364-09 - 1	SB-03-4.167-4.667	41947	9.6651	-	7471B	PPB	14 Oct 2024 12:25:12	U	SMPL
P4364-10 - 1	SB-04-0.167-0.667	53464	12.3240	-	7471B	PPB	14 Oct 2024 12:27:31	U	SMPL
P4364-11 - 1	SB-04-2.0-2.5	41701	9.6084	-	7471B	PPB	14 Oct 2024 12:29:51	U	SMPL
P4364-12 - 1	SB-04-4.5-5.0	5801	1.3205	-	7471B	PPB	14 Oct 2024 12:32:18	U	SMPL
P4364-13 - 1	SB-05-0.167-0.667	8432	1.9279	-	7471B	PPB	14 Oct 2024 12:34:44	U	SMPL
P4364-14 - 1	SB-06-0.167-0.667	25241	5.8084	-	7471B	PPB	14 Oct 2024 12:37:01	U	SMPL
CCV15 - 1	CCV15	21367	4.9141	-	7471B	PPB	14 Oct 2024 12:39:18	U	SMPL
CCB15 - 1	CCB15	-114	-0.0451	-	7471B	PPB	14 Oct 2024 12:41:38	U	SMPL
P4364-15 - 1	SB-07-0.167-0.667	20900	4.8062	-	7471B	PPB	14 Oct 2024 12:43:56	U	SMPL
P4364-16 - 1	SB-08-0.167-0.667	14768	3.3906	-	7471B	PPB	14 Oct 2024 12:46:12	U	SMPL
P4364-16DUP - 1	SB-08-0.167-0.667DUP	16032	3.6824	-	7471B	PPB	14 Oct 2024 12:48:30	U	SMPL
P4364-16MS - 1	SB-08-0.167-0.667MS	33942	7.8171	-	7471B	PPB	14 Oct 2024 12:53:40	U	SMPL
P4364-16MSD - 1	SB-08-0.167-0.667MSD	32641	7.5168	-	7471B	PPB	14 Oct 2024 12:55:56	U	SMPL
P4376-01 - 1	OR-02-100924	852	0.1780	-	7471B	PPB	14 Oct 2024 12:58:18	U	SMPL
P4377-01 - 1	HD-01-100924	540	0.1059	-	7471B	PPB	14 Oct 2024 13:00:37	U	SMPL
PB164117BL - 1	PBS	-7	-0.0204	-	7471B	PPB	14 Oct 2024 13:02:54	U	SMPL
PB164117BS - 1	LCSS	18617	4.2792	-	7471B	PPB	14 Oct 2024 13:05:11	U	SMPL
P4375-01 - 1	CONCRETE-PADS-1	74	-0.0017	-	7471B	PPB	14 Oct 2024 13:07:26	U	SMPL
CCV16 - 1	CCV16	21640	4.9771	-	7471B	PPB	14 Oct 2024 13:09:45	U	SMPL
CCB16 - 1	CCB16	-219	-0.0693	-	7471B	PPB	14 Oct 2024 13:12:00	U	SMPL
P4375-01DUP - 1	CONCRETE-PADS-1DUP	269	0.0434	-	7471B	PPB	14 Oct 2024 13:14:18	U	SMPL
P4375-01MS - 1	CONCRETE-PADS-1MS	16582	3.8094	-	7471B	PPB	14 Oct 2024 13:16:34	U	SMPL
P4375-01MSD - 1	CONCRETE-PADS-1MSD	16382	3.7632	-	7471B	PPB	14 Oct 2024 13:18:49	U	SMPL
P4375-03 - 1	CONCRETE-PADS-2	1767	0.3892	-	7471B	PPB	14 Oct 2024 13:21:07	U	SMPL
P4375-05 - 1	CONCRETE-PADS-3	568	0.1124	-	7471B	PPB	14 Oct 2024 13:23:26	U	SMPL
P4375-07 - 1	CONCRETE-PADS-4	286	0.0473	-	7471B	PPB	14 Oct 2024 13:25:44	U	SMPL
P4375-09 - 1	CONCRETE-PADS-5	299	0.0503	-	7471B	PPB	14 Oct 2024 13:28:01	U	SMPL
P4375-11 - 1	CONCRETE-PADS-6	758	0.1563	-	7471B	PPB	14 Oct 2024 13:30:18	U	SMPL
P4375-13 - 1	CONCRETE-PADS-7	140	0.0136	-	7471B	PPB	14 Oct 2024 13:32:35	U	SMPL
P4375-15 - 1	CONCRETE-PADS-8	192	0.0256	-	7471B	PPB	14 Oct 2024 13:34:51	U	SMPL
CCV17 - 1	CCV17	21202	4.8760	-	7471B	PPB	14 Oct 2024 13:37:07	U	SMPL
CCB17 - 1	CCB17	-57	-0.0319	-	7471B	PPB	14 Oct 2024 13:39:22	U	SMPL
P4375-17 - 1	CONCRETE-PADS-9	531	0.1039	-	7471B	PPB	14 Oct 2024 13:41:40	U	SMPL
P4375-19 - 1	CONCRETE-PADS-10	222	0.0325	-	7471B	PPB	14 Oct 2024 13:43:55	U	SMPL
P4375-21 - 1	CONCRETE-PADS-11	319	0.0549	-	7471B	PPB	14 Oct 2024 13:46:10	U	SMPL
P4375-23 - 1	FENCE-POST-1	274	0.0445	-	7471B	PPB	14 Oct 2024 13:48:26	U	SMPL
P4375-25 - 1	FENCE-POST-2	205	0.0286	-	7471B	PPB	14 Oct 2024 13:50:41	U	SMPL
P4375-27 - 1	FENCE-POST-3	102	0.0048	-	7471B	PPB	14 Oct 2024 13:52:57	U	SMPL
PB164118BL - 1	PBS	-48	-0.0298	-	7471B	PPB	14 Oct 2024 13:55:13	U	SMPL
PB164118BS - 1	LCSS	17956	4.1266	-	7471B	PPB	14 Oct 2024 13:57:30	U	SMPL
P4385-02 - 1	SP-1	2061	0.4571	-	7471B	PPB	14 Oct 2024 13:59:46	U	SMPL
P4385-04 - 1	SP-2	2058	0.4564	-	7471B	PPB	14 Oct 2024 14:02:05	U	SMPL
CCV18 - 1	CCV18	22139	5.0923	-	7471B	PPB	14 Oct 2024 14:04:21	U	SMPL
CCB18 - 1	CCB18	-163	-0.0564	-	7471B	PPB	14 Oct 2024 14:06:37	U	SMPL
P4385-06 - 1	SP-3	2027	0.4492	-	7471B	PPB	14 Oct 2024 14:08:57	U	SMPL
P4385-08 - 1	SP-4	3470	0.7823	-	7471B	PPB	14 Oct 2024 14:11:12	U	SMPL
P4385-10 - 1	SP-5	3376	0.7606	-	7471B	PPB	14 Oct 2024 14:13:28	U	SMPL
P4385-12 - 1	SP-6	2105	0.4672	-	7471B	PPB	14 Oct 2024 14:15:46	U	SMPL
P4385-14 - 1	SP-7	2848	0.6388	-	7471B	PPB	14 Oct 2024 14:18:06	U	SMPL
P4385-16 - 1	SP-8	3091	0.6949	-	7471B	PPB	14 Oct 2024 14:20:24	U	SMPL
P4385-18 - 1	SP-9	2847	0.6385	-	7471B	PPB	14 Oct 2024 14:22:41	U	SMPL
P4385-20 - 1	SP-10	4269	0.9668	-	7471B	PPB	14 Oct 2024 14:24:59	U	SMPL
P4385-20DUP - 1	SP-10DUP	3943	0.8915	-	7471B	PPB	14 Oct 2024 14:27:20	U	SMPL
P4385-20MS - 1	SP-10MS	22586	5.1955	-	7471B	PPB	14 Oct 2024 14:29:38	U	SMPL
CCV19 - 1	CCV19	21623	4.9732	-	7471B	PPB	14 Oct 2024 14:31:55	U	SMPL

# LB132914 INSTRUMENT ID : CV1

Method: 7471B

Operator: Admin

Date of Analysis: 14 Oct 2024 09:47:34

Sample ID	Extended ID	μ Abs.	Conc.	Std Conc	Method	Units	Date	Type	Type
CCB19 - 1	CCB19	-117	-0.0457		-7471B	PPB	14 Oct 2024 14:34:15	U	SMPL
P4385-20MSD - 1	SP-10MSD	22233	5.1140		-7471B	PPB	14 Oct 2024 14:36:33	U	SMPL
P4393-01 - 1	BUST-DEBRIS	-188	-0.0621		-7471B	PPB	14 Oct 2024 14:38:49	U	SMPL
P4394-01 - 1	WASH-DEBRIS	-19	-0.0231		-7471B	PPB	14 Oct 2024 14:41:08	U	SMPL
P4395-01 - 1	F05308-SOLID	4243	0.9608		-7471B	PPB	14 Oct 2024 14:43:24	U	SMPL
P4364-16LX5 - 1		3392	0.7843		-7471B	PPB	14 Oct 2024 14:45:40	U	SMPL
P4364-16A - 1		33689	7.7587		-7471B	PPB	14 Oct 2024 14:47:58	U	SMPL
P4375-01LX5 - 1		-155	-0.0545		-7471B	PPB	14 Oct 2024 14:50:17	U	SMPL
P4375-01A - 1		18607	4.2769		-7471B	PPB	14 Oct 2024 14:52:36	U	SMPL
P4385-20LX5 - 1		701	0.1431		-7471B	PPB	14 Oct 2024 14:54:52	U	SMPL
P4385-20A - 1		16545	3.8008		-7471B	PPB	14 Oct 2024 14:57:12	U	SMPL
CCV20 - 1	CCV20	22070	5.0763		-7471B	PPB	14 Oct 2024 14:59:28	U	SMPL
CCB20 - 1	CCB20	-81	-0.0374		-7471B	PPB	14 Oct 2024 15:01:47	U	SMPL
P4364-04DLX2 - 1		25737	5.9229		-7471B	PPB	14 Oct 2024 15:04:06	U	SMPL
P4364-05DLX2 - 1		21577	4.9625		-7471B	PPB	14 Oct 2024 15:06:22	U	SMPL
P4364-06DLX5 - 1		36385	8.3811		-7471B	PPB	14 Oct 2024 15:08:41	U	SMPL
P4364-07DLX2 - 1		10222	2.3411		-7471B	PPB	14 Oct 2024 15:10:59	U	SMPL
P4364-10DLX2 - 1		26881	6.1870		-7471B	PPB	14 Oct 2024 15:13:18	U	SMPL
CCV21 - 1	CCV21	20845	4.7935		-7471B	PPB	14 Oct 2024 15:15:36	U	SMPL
CCB21 - 1	CCB21	-34	-0.0266		-7471B	PPB	14 Oct 2024 15:17:55	U	SMPL