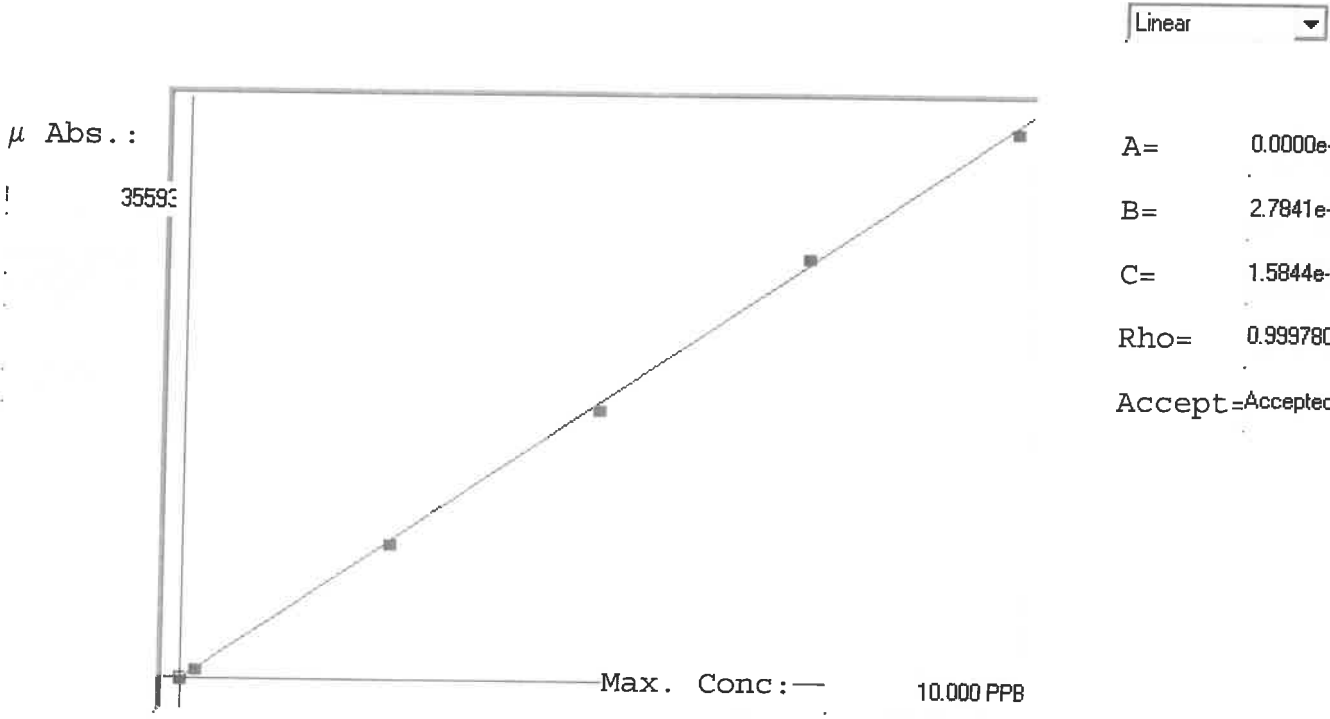


LB132761

7470A

INSTRUMENT ID:CV1



Std ID	Conc.	Calc.	Dev.	Mean	SD or %RSD	Rep 1	Rep 2	Rep 3	Rep 4	Rep 5	o/w
0.0	0.000	0.003	0.003	-45	0.000	-45	0				1
0.2	0.200	0.220	0.020	732	0.0 %	732					1b
2.5	2.500	2.474	-0.026	8828	0.0 %	8828					1
5.0	5.000	4.925	-0.075	17633	0.0 %	17633					2
7.5	7.500	7.653	0.153	27433	0.0 %	27433					2
10.0	10.000	9.925	-0.075	35593	0.0 %	35593					1

LB132761 INSTRUMENT ID : CV1

Method: 7470A

Operator: Admin

Date of Analysis: 04 Oct 2024 10:09:31

Sample ID	Extended ID	μ Abs.	Conc.	Std Conc	Method	Units	Date	Type	Type
0.0 - 1	80	-45	-	0.0000	7470A	PPB	04 Oct 2024 10:34:32	S	Std
0.2 - 1	50.2	732	-	0.2000	7470A	PPB	04 Oct 2024 10:36:49	S	Std
2.5 - 1	52.5	8828	-	2.5000	7470A	PPB	04 Oct 2024 10:39:06	S	Std
5.0 - 1	55	17633	-	5.0000	7470A	PPB	04 Oct 2024 10:41:23	S	Std
7.5 - 1	57.5	27433	-	7.5000	7470A	PPB	04 Oct 2024 10:43:39	S	Std
10.0 - 1	510	35593	-	10.0000	7470A	PPB	04 Oct 2024 10:52:18	S	Std
ICV24 - 1	ICV24	14350	4.0110	-	7470A	PPB	04 Oct 2024 10:55:10	U	SMPL
ICB24 - 1	ICB24	-197	-0.0390	-	7470A	PPB	04 Oct 2024 10:59:59	U	SMPL
CCV71 - 1	CCV71	17798	4.9709	-	7470A	PPB	04 Oct 2024 11:02:14	U	SMPL
CCB71 - 1	CCB71	-127	-0.0195	-	7470A	PPB	04 Oct 2024 11:04:29	U	SMPL
CRA - 1	CRA	798	0.2380	-	7470A	PPB	04 Oct 2024 11:06:46	U	SMPL
HighStd - 1	HighStd	35611	9.9301	-	7470A	PPB	04 Oct 2024 11:09:01	U	SMPL
ChkStd - 1	ChkStd	24960	6.9648	-	7470A	PPB	04 Oct 2024 11:11:16	U	SMPL
PB163879BL - 1	PBW	-138	-0.0226	-	7470A	PPB	04 Oct 2024 11:13:34	U	SMPL
PB163879BS - 1	LCSW	14578	4.0744	-	7470A	PPB	04 Oct 2024 11:18:35	U	SMPL
P4242-04 - 1	TP-Q	2832	0.8043	-	7470A	PPB	04 Oct 2024 11:20:52	U	SMPL
P4254-04 - 1	MH-147-SLUDGE	1267	0.3686	-	7470A	PPB	04 Oct 2024 11:26:37	U	SMPL
P4258-04 - 1	Chamberlain Ave	545	0.1676	-	7470A	PPB	04 Oct 2024 11:28:54	U	SMPL
P4270-04 - 1	IB-2	6	0.0175	-	7470A	PPB	04 Oct 2024 11:31:13	U	SMPL
P4276-02 - 1	VNJ-208	213	0.0751	-	7470A	PPB	04 Oct 2024 11:33:29	U	SMPL
CCV72 - 1	CCV72	19203	5.3621	-	7470A	PPB	04 Oct 2024 11:35:44	U	SMPL
CCB72 - 1	CCB72	-178	-0.0337	-	7470A	PPB	04 Oct 2024 11:38:00	U	SMPL
P4276-02DUP - 1	VNJ-208DUP	260	0.0882	-	7470A	PPB	04 Oct 2024 11:46:02	U	SMPL
P4276-02MS - 1	VNJ-208MS	15894	4.4408	-	7470A	PPB	04 Oct 2024 11:48:17	U	SMPL
P4276-02MSD - 1	VNJ-208MSD	15636	4.3690	-	7470A	PPB	04 Oct 2024 11:50:33	U	SMPL
PB163851TB - 1	PB163851TB	41	0.0273	-	7470A	PPB	04 Oct 2024 11:55:08	U	SMPL
P4276-02LX5 - 1		67	0.0345	-	7470A	PPB	04 Oct 2024 11:57:23	U	SMPL
P4276-02A - 1		15993	4.4684	-	7470A	PPB	04 Oct 2024 11:59:39	U	SMPL
CCV73 - 1	CCV73	19581	5.4673	-	7470A	PPB	04 Oct 2024 12:01:55	U	SMPL
CCB73 - 1	CCB73	-52	0.0014	-	7470A	PPB	04 Oct 2024 12:04:14	U	SMPL