

Data Path : Z:\pestpcbsrv\HPCHEM1\ECD\_L\Data\PL101224\  
 Data File : PL092347.D  
 Signal(s) : Signal #1: ECD1A.ch Signal #2: ECD2B.ch  
 Acq On : 11 Oct 2024 17:48  
 Operator : AR\AJ  
 Sample : PSTDCCC050  
 Misc :  
 ALS Vial : 4 Sample Multiplier: 1

Instrument :  
 ECD\_L  
 ClientSampleId :  
 PSTDCCC050

Integration File signal 1: autoint1.e  
 Integration File signal 2: autoint2.e  
 Quant Time: Oct 14 01:35:48 2024  
 Quant Method : Z:\pestpcbsrv\HPCHEM1\ECD\_L\methods\PL092324.M  
 Quant Title : GC Extractables  
 QLast Update : Mon Sep 23 16:44:57 2024  
 Response via : Initial Calibration  
 Integrator: ChemStation

Volume Inj. : 1 µl  
 Signal #1 Phase : ZB-MR2 Signal #2 Phase: ZB-MR1  
 Signal #1 Info : 30M x 0.32mm x0.2 Signal #2 Info : 30M x 0.32mm x0.5µm

	Compound	RT#1	RT#2	Resp#1	Resp#2	ng/ml	ng/ml
-----							
System Monitoring Compounds							
1)	SA Tetrachlo...	3.544	2.779	112.2E6	130.9E6	50.413	52.204
28)	SA Decachlor...	9.062	7.921	79418216	113.6E6	48.478	45.396
Target Compounds							
2)	A alpha-BHC	4.000	3.282	156.9E6	191.8E6	50.680	52.638
3)	MA gamma-BHC...	4.332	3.612	151.3E6	183.4E6	48.829	51.935
4)	MA Heptachlor	4.922	3.951	137.9E6	175.3E6	49.859	50.814
5)	MB Aldrin	5.263	4.231	135.1E6	182.1E6	48.638	53.548
6)	B beta-BHC	4.530	3.911	65316336	76175113	49.244	50.679
7)	B delta-BHC	4.777	4.141	145.1E6	187.3E6	50.295	53.937
8)	B Heptachlo...	5.690	4.735	125.6E6	154.3E6	49.363	51.058
9)	A Endosulfan I	6.076	5.104	112.2E6	138.3E6	48.512	50.399
10)	B gamma-Chl...	5.946	4.984	125.3E6	154.9E6	50.724	51.479
11)	B alpha-Chl...	6.025	5.048	120.2E6	152.6E6	48.776	50.968
12)	B 4,4'-DDE	6.198	5.237	106.1E6	150.6E6	49.039	54.186
13)	MA Dieldrin	6.351	5.369	117.0E6	149.5E6	47.992	50.983
14)	MA Endrin	6.580	5.645	95785975	131.2E6	46.482	50.023
15)	B Endosulfa...	6.800	5.940	100.1E6	126.9E6	45.523	50.719
16)	A 4,4'-DDD	6.716	5.793	86055749	119.9E6	47.923	56.106
17)	MA 4,4'-DDT	7.029	6.044	85161327	110.7E6	46.253	47.862
18)	B Endrin al...	6.931	6.119	81304891	101.1E6	46.653	49.551
19)	B Endosulfa...	7.164	6.342	93520408	119.9E6	47.178	49.693
20)	A Methoxychlor	7.505	6.618	47324615	59382988	48.206	47.493
21)	B Endrin ke...	7.649	6.848	104.6E6	136.4E6	47.616	49.252
22)	Mirex	8.123	7.029	80665149	112.7E6	44.789	46.342
23)	Chlordane-1	0.000	3.776	0	181948	N.D.	1.820 #
24)	Chlordane-2	5.263f	4.368	135.1E6	4065255	1259.683	36.224 #
25)	Chlordane-3	5.946	4.984	125.3E6	154.9E6	334.640	467.588 #
26)	Chlordane-4	6.025	5.048	120.2E6	152.6E6	265.327	480.880 #
27)	Chlordane-5	0.000	5.940	0	126.9E6	N.D.	1170.305 #

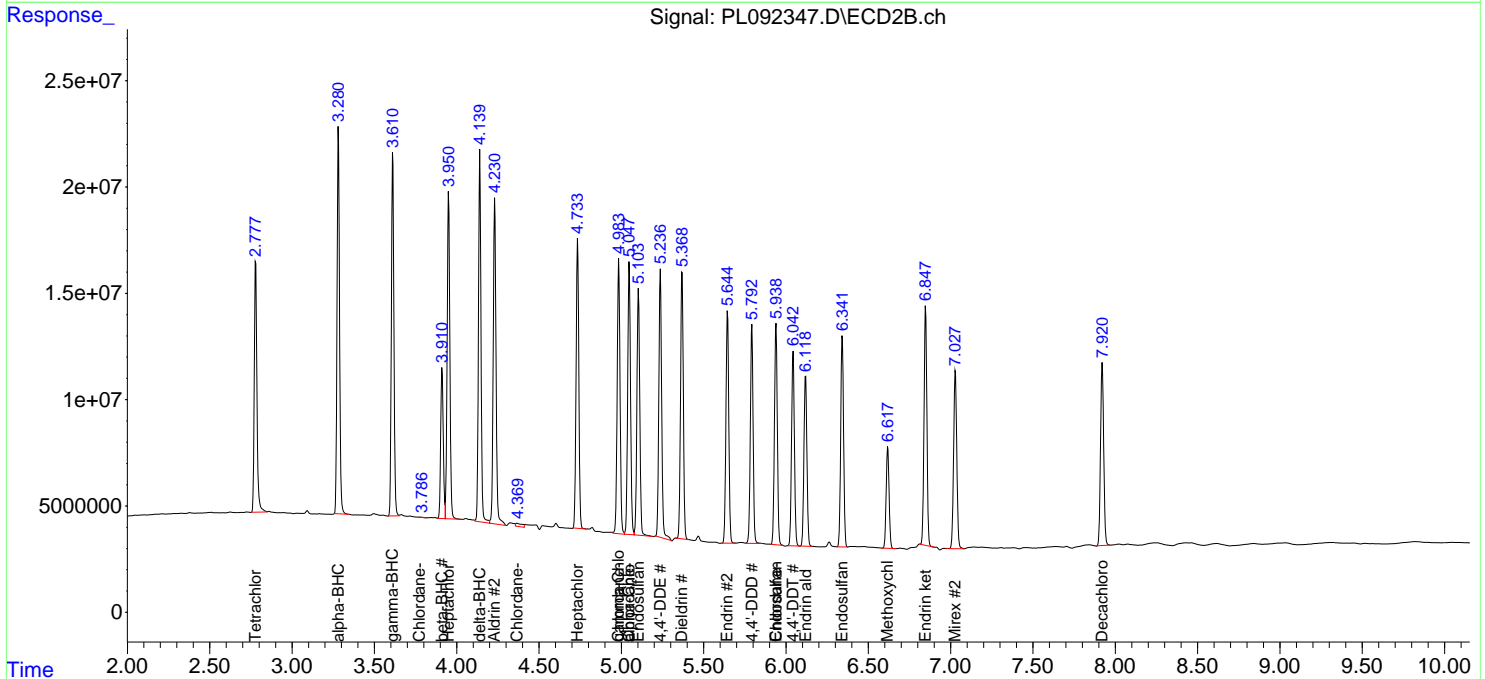
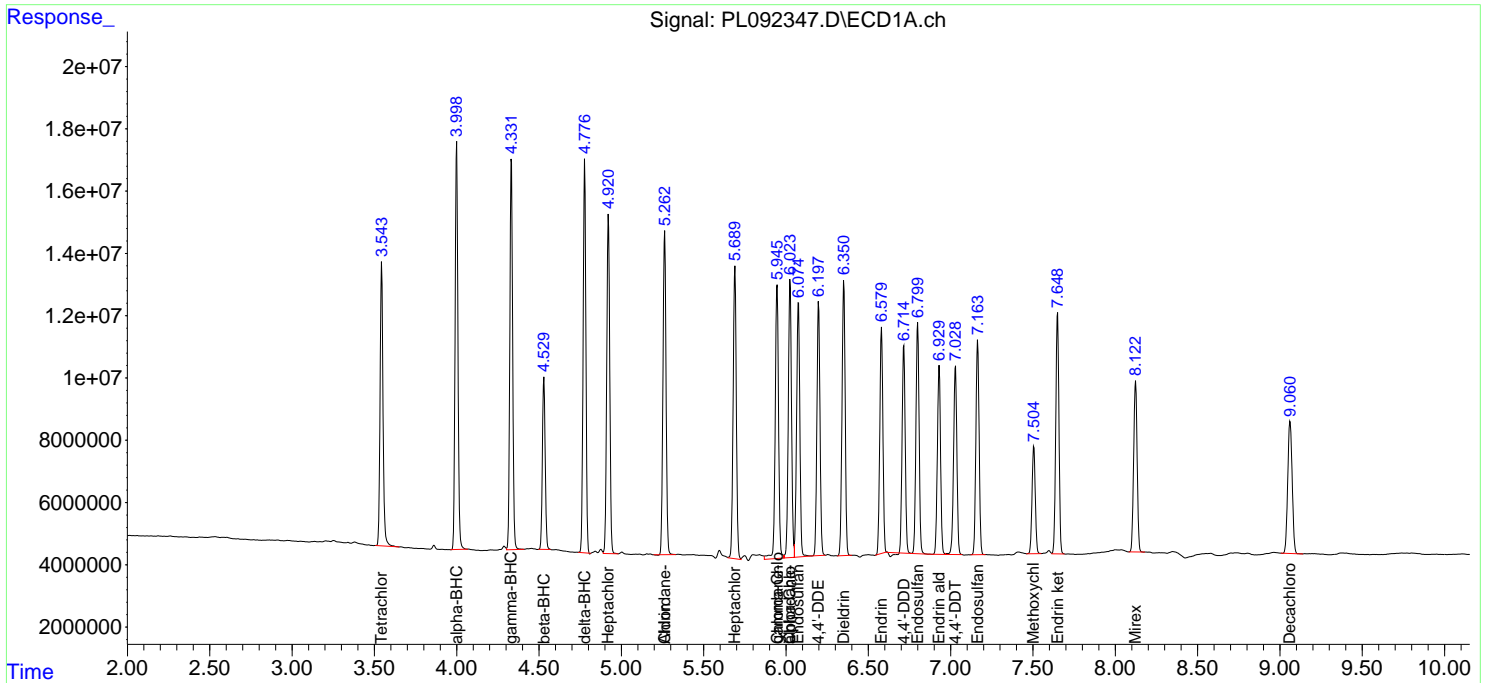
(f)=RT Delta > 1/2 Window (#)=Amounts differ by > 25% (m)=manual int.

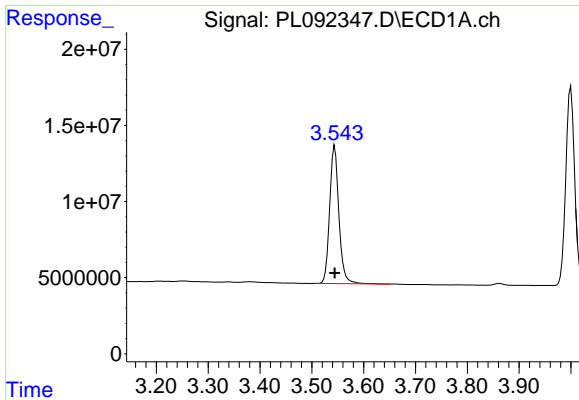
Data Path : Z:\pestpcbsrv\HPCHEM1\ECD\_L\Data\PL101224\  
 Data File : PL092347.D  
 Signal(s) : Signal #1: ECD1A.ch Signal #2: ECD2B.ch  
 Acq On : 11 Oct 2024 17:48  
 Operator : AR\AJ  
 Sample : PSTDCCC050  
 Misc :  
 ALS Vial : 4 Sample Multiplier: 1

Instrument :  
 ECD\_L  
 ClientSampleId :  
 PSTDCCC050

Integration File signal 1: autoint1.e  
 Integration File signal 2: autoint2.e  
 Quant Time: Oct 14 01:35:48 2024  
 Quant Method : Z:\pestpcbsrv\HPCHEM1\ECD\_L\methods\PL092324.M  
 Quant Title : GC Extractables  
 QLast Update : Mon Sep 23 16:44:57 2024  
 Response via : Initial Calibration  
 Integrator: ChemStation

Volume Inj. : 1 µl  
 Signal #1 Phase : ZB-MR2 Signal #2 Phase: ZB-MR1  
 Signal #1 Info : 30M x 0.32mm x0.2 Signal #2 Info : 30M x 0.32mm x0.5µm

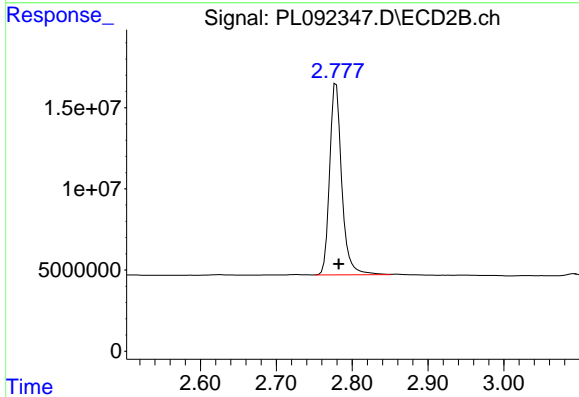




#1 Tetrachloro-m-xylene

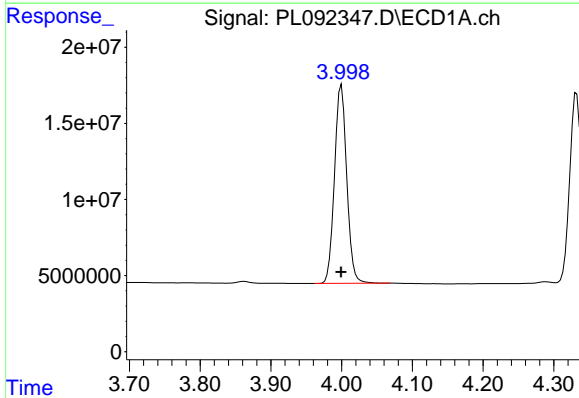
R.T.: 3.544 min  
 Delta R.T.: 0.000 min  
 Response: 112151547  
 Conc: 50.41 ng/ml

Instrument :  
 ECD\_L  
 ClientSampleId :  
 PSTDCCC050



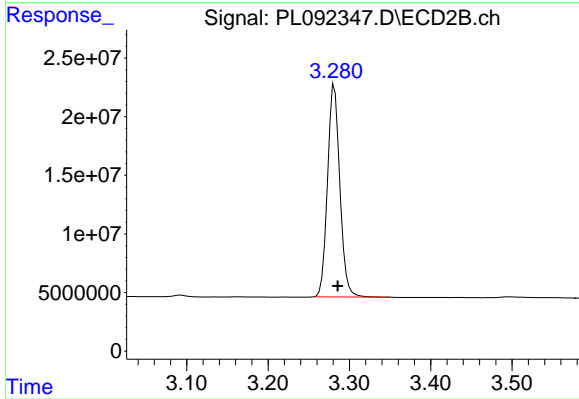
#1 Tetrachloro-m-xylene

R.T.: 2.779 min  
 Delta R.T.: -0.003 min  
 Response: 130930880  
 Conc: 52.20 ng/ml



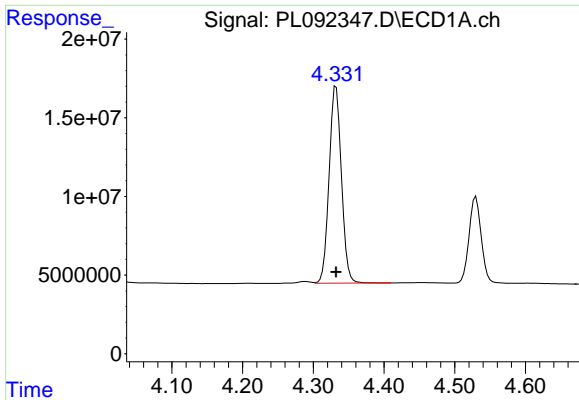
#2 alpha-BHC

R.T.: 4.000 min  
 Delta R.T.: 0.000 min  
 Response: 156932374  
 Conc: 50.68 ng/ml



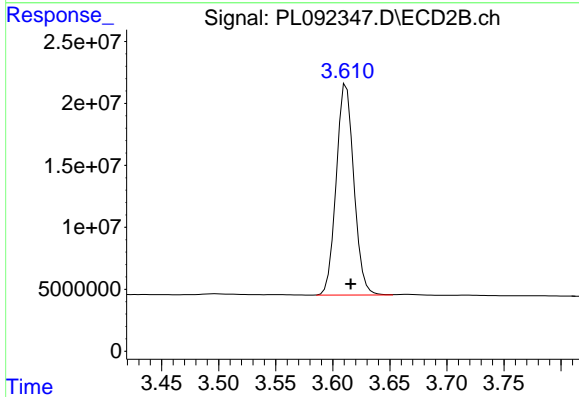
#2 alpha-BHC

R.T.: 3.282 min  
 Delta R.T.: -0.004 min  
 Response: 191777912  
 Conc: 52.64 ng/ml

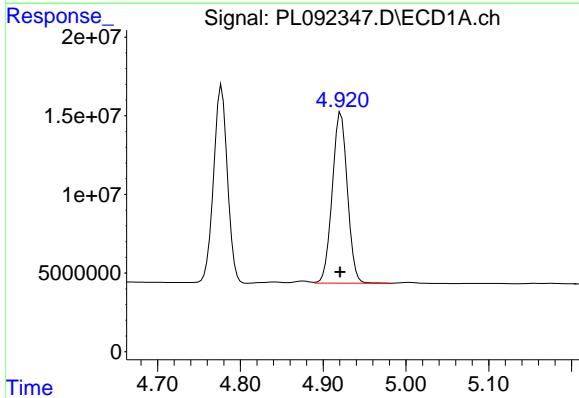


#3 gamma-BHC (Lindane)  
 R.T.: 4.332 min  
 Delta R.T.: 0.000 min  
 Response: 151310293  
 Conc: 48.83 ng/ml

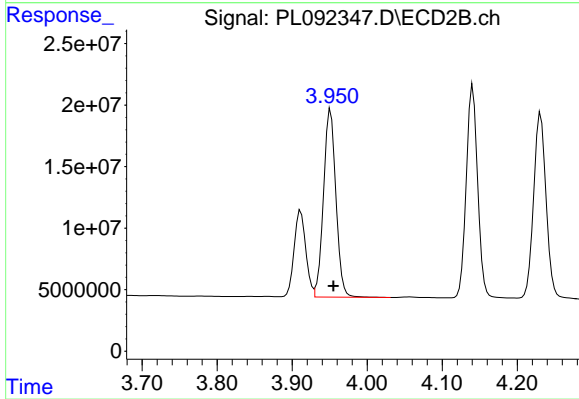
Instrument :  
 ECD\_L  
 ClientSampleId :  
 PSTDCCC050



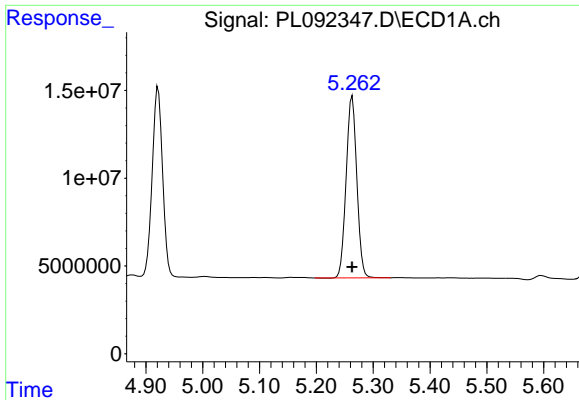
#3 gamma-BHC (Lindane)  
 R.T.: 3.612 min  
 Delta R.T.: -0.004 min  
 Response: 183382313  
 Conc: 51.94 ng/ml



#4 Heptachlor  
 R.T.: 4.922 min  
 Delta R.T.: 0.001 min  
 Response: 137883682  
 Conc: 49.86 ng/ml

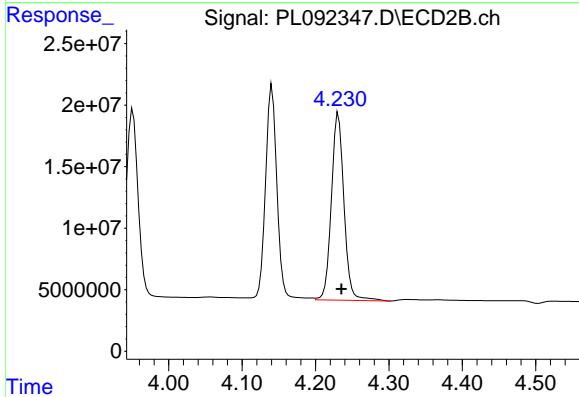


#4 Heptachlor  
 R.T.: 3.951 min  
 Delta R.T.: -0.004 min  
 Response: 175339222  
 Conc: 50.81 ng/ml

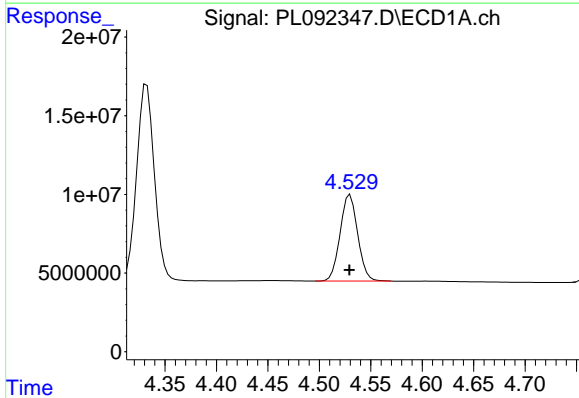


#5 Aldrin  
 R.T.: 5.263 min  
 Delta R.T.: 0.000 min  
 Response: 135096735  
 Conc: 48.64 ng/ml

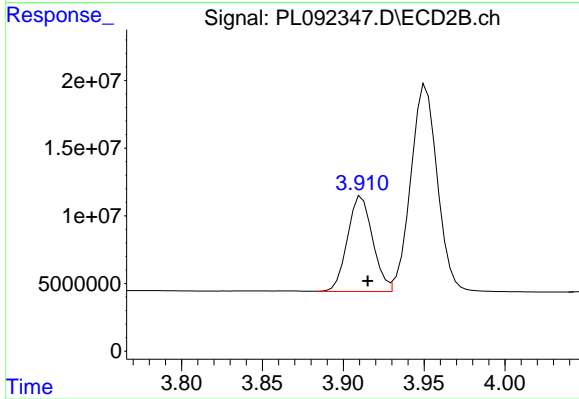
Instrument :  
 ECD\_L  
 ClientSampleId :  
 PSTDCCC050



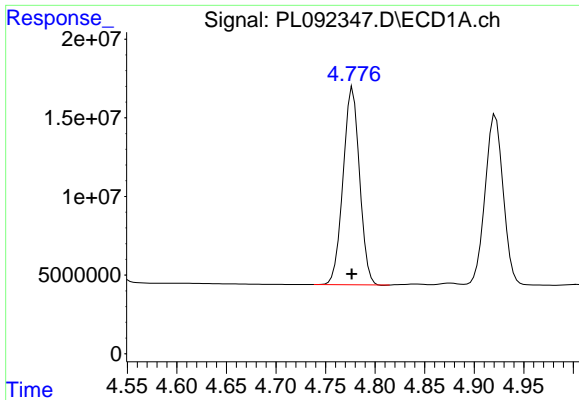
#5 Aldrin  
 R.T.: 4.231 min  
 Delta R.T.: -0.004 min  
 Response: 182120913  
 Conc: 53.55 ng/ml



#6 beta-BHC  
 R.T.: 4.530 min  
 Delta R.T.: 0.000 min  
 Response: 65316336  
 Conc: 49.24 ng/ml



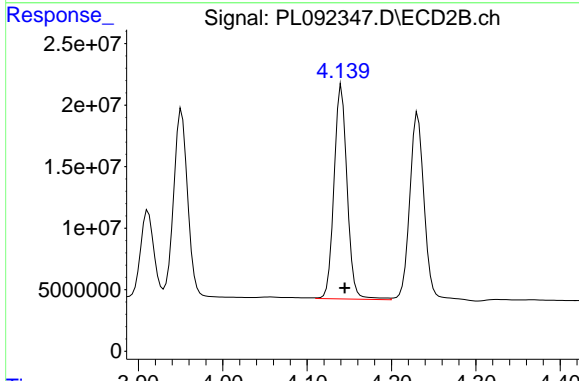
#6 beta-BHC  
 R.T.: 3.911 min  
 Delta R.T.: -0.004 min  
 Response: 76175113  
 Conc: 50.68 ng/ml



#7 delta-BHC

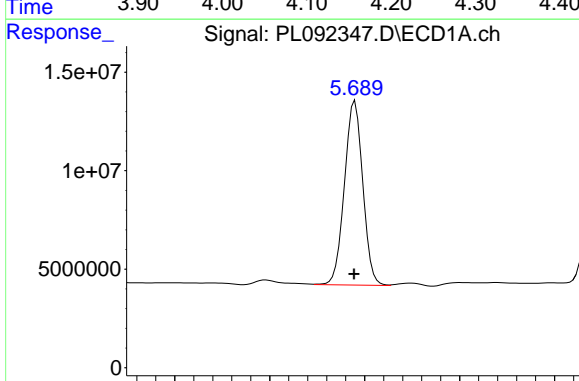
R.T.: 4.777 min  
 Delta R.T.: 0.000 min  
 Response: 145060553  
 Conc: 50.29 ng/ml

Instrument :  
 ECD\_L  
 ClientSampleId :  
 PSTDCCC050



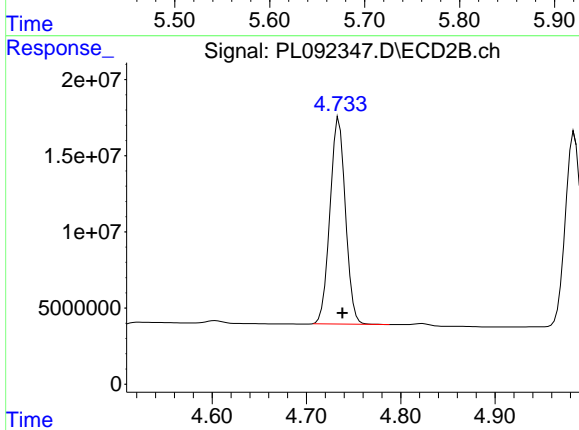
#7 delta-BHC

R.T.: 4.141 min  
 Delta R.T.: -0.004 min  
 Response: 187252446  
 Conc: 53.94 ng/ml



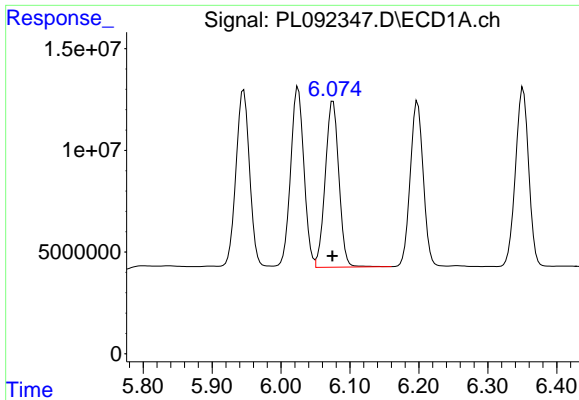
#8 Heptachlor epoxide

R.T.: 5.690 min  
 Delta R.T.: 0.001 min  
 Response: 125629141  
 Conc: 49.36 ng/ml



#8 Heptachlor epoxide

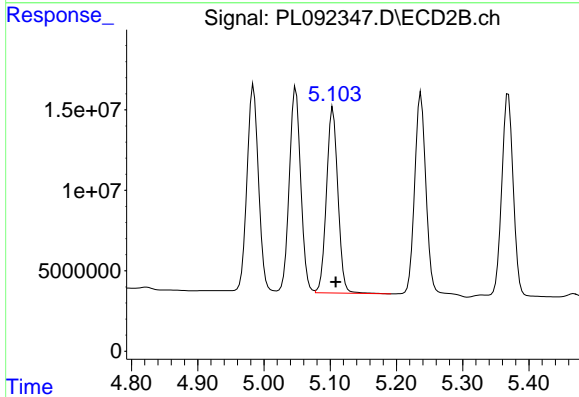
R.T.: 4.735 min  
 Delta R.T.: -0.004 min  
 Response: 154341360  
 Conc: 51.06 ng/ml



#9 Endosulfan I

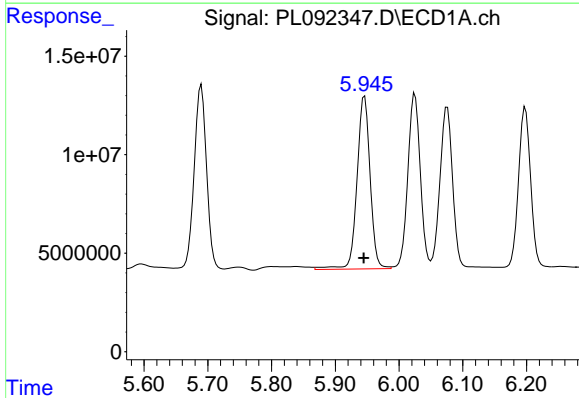
R.T.: 6.076 min  
 Delta R.T.: 0.000 min  
 Response: 112226864  
 Conc: 48.51 ng/ml

Instrument :  
 ECD\_L  
 ClientSampleId :  
 PSTDCCC050



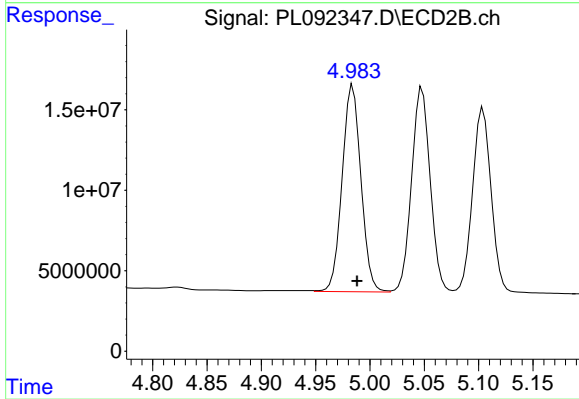
#9 Endosulfan I

R.T.: 5.104 min  
 Delta R.T.: -0.004 min  
 Response: 138327901  
 Conc: 50.40 ng/ml



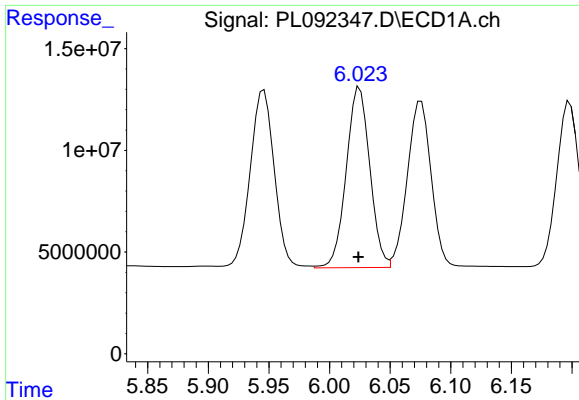
#10 gamma-Chlordane

R.T.: 5.946 min  
 Delta R.T.: 0.001 min  
 Response: 125348563  
 Conc: 50.72 ng/ml



#10 gamma-Chlordane

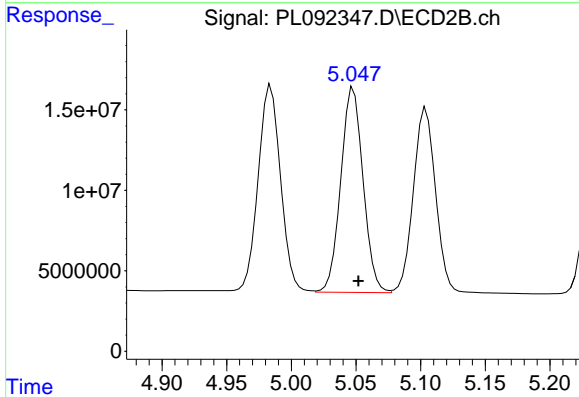
R.T.: 4.984 min  
 Delta R.T.: -0.004 min  
 Response: 154878309  
 Conc: 51.48 ng/ml



#11 alpha-Chlordane

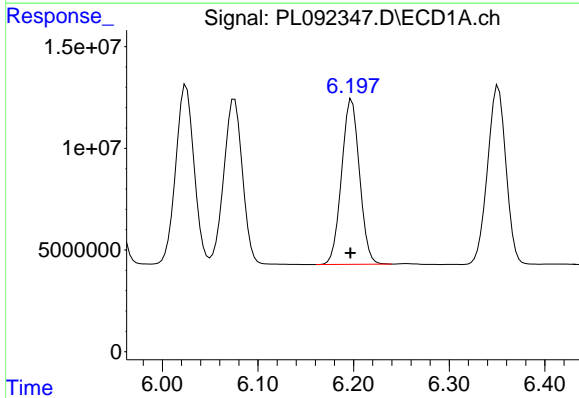
R.T.: 6.025 min  
Delta R.T.: 0.001 min  
Response: 120152285  
Conc: 48.78 ng/ml

Instrument :  
ECD\_L  
ClientSampleId :  
PSTDCCC050



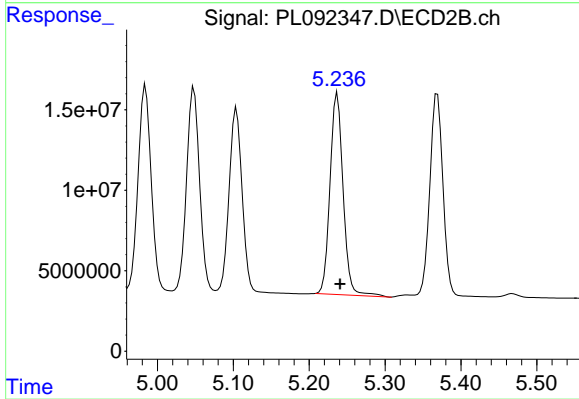
#11 alpha-Chlordane

R.T.: 5.048 min  
Delta R.T.: -0.004 min  
Response: 152574692  
Conc: 50.97 ng/ml



#12 4,4'-DDE

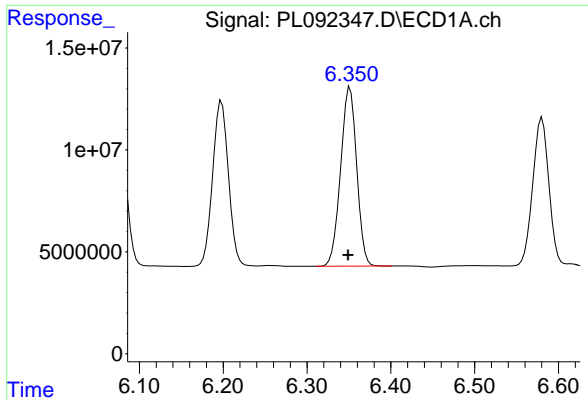
R.T.: 6.198 min  
Delta R.T.: 0.001 min  
Response: 106141118  
Conc: 49.04 ng/ml



#12 4,4'-DDE

R.T.: 5.237 min  
Delta R.T.: -0.004 min  
Response: 150575054  
Conc: 54.19 ng/ml

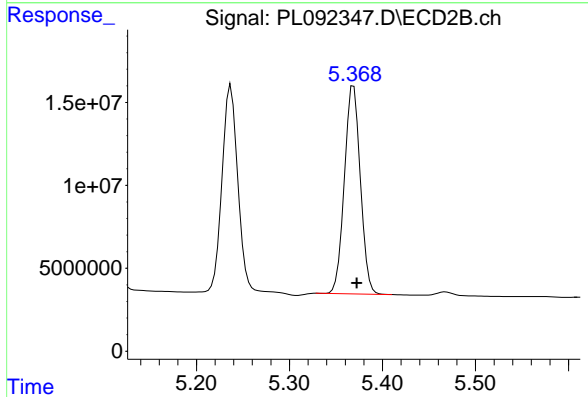




#13 Dieldrin

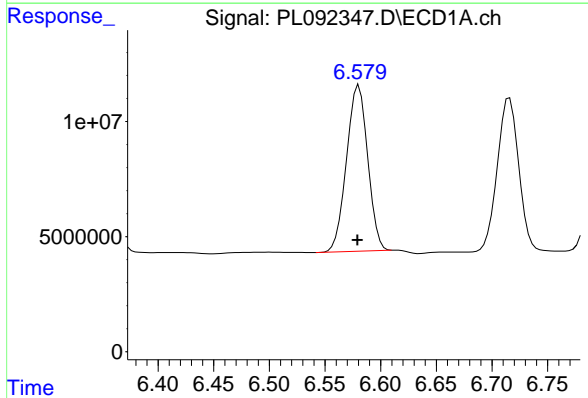
R.T.: 6.351 min  
 Delta R.T.: 0.002 min  
 Response: 117046594  
 Conc: 47.99 ng/ml

Instrument :  
 ECD\_L  
 ClientSampleId :  
 PSTDCCC050



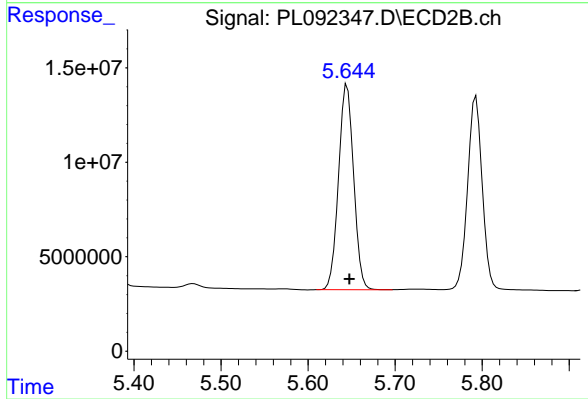
#13 Dieldrin

R.T.: 5.369 min  
 Delta R.T.: -0.003 min  
 Response: 149474687  
 Conc: 50.98 ng/ml



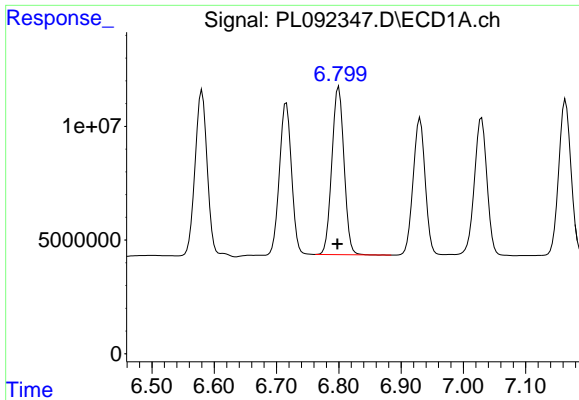
#14 Endrin

R.T.: 6.580 min  
 Delta R.T.: 0.001 min  
 Response: 95785975  
 Conc: 46.48 ng/ml



#14 Endrin

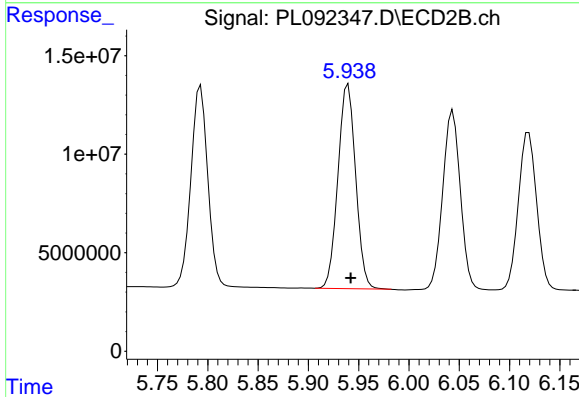
R.T.: 5.645 min  
 Delta R.T.: -0.003 min  
 Response: 131168284  
 Conc: 50.02 ng/ml



#15 Endosulfan II

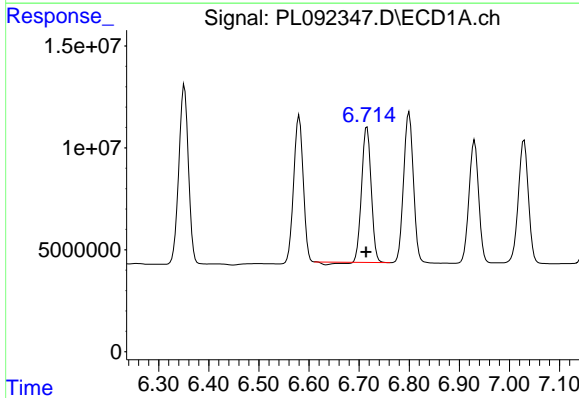
R.T.: 6.800 min  
 Delta R.T.: 0.002 min  
 Response: 100138438  
 Conc: 45.52 ng/ml

Instrument :  
 ECD\_L  
 ClientSampleId :  
 PSTDCCC050



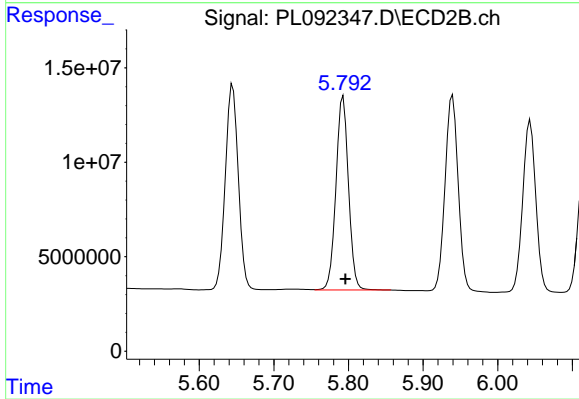
#15 Endosulfan II

R.T.: 5.940 min  
 Delta R.T.: -0.002 min  
 Response: 126918937  
 Conc: 50.72 ng/ml



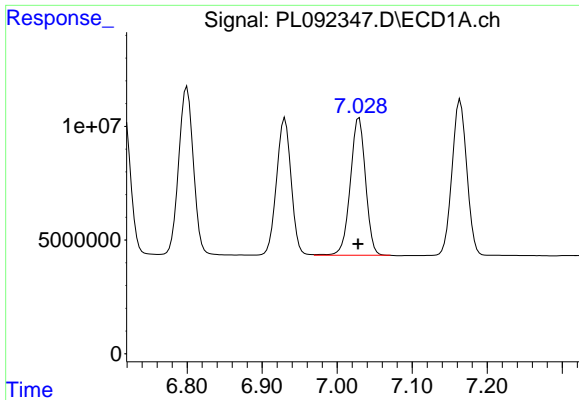
#16 4,4'-DDD

R.T.: 6.716 min  
 Delta R.T.: 0.002 min  
 Response: 86055749  
 Conc: 47.92 ng/ml



#16 4,4'-DDD

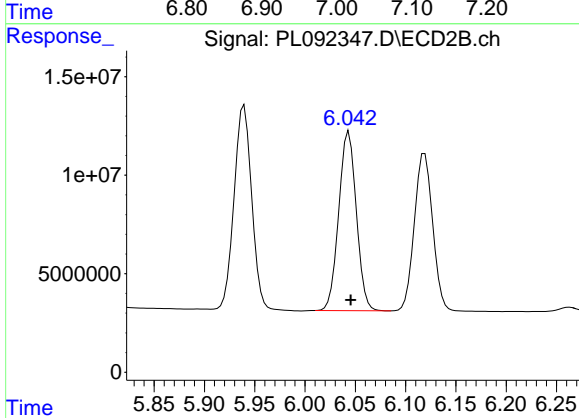
R.T.: 5.793 min  
 Delta R.T.: -0.003 min  
 Response: 119855826  
 Conc: 56.11 ng/ml



#17 4,4'-DDT

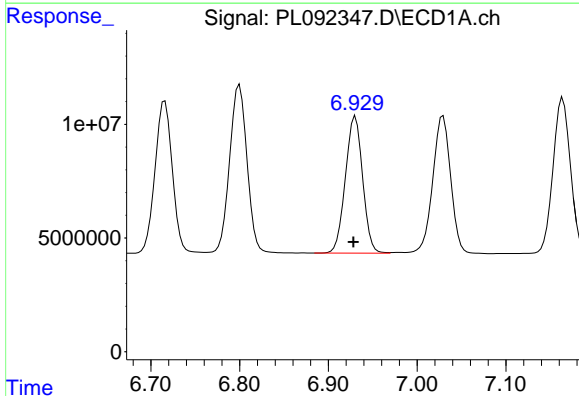
R.T.: 7.029 min  
 Delta R.T.: 0.001 min  
 Response: 85161327  
 Conc: 46.25 ng/ml

Instrument :  
 ECD\_L  
 ClientSampleId :  
 PSTDCCC050



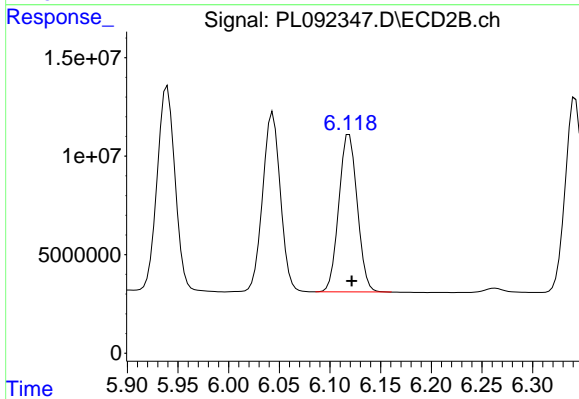
#17 4,4'-DDT

R.T.: 6.044 min  
 Delta R.T.: -0.002 min  
 Response: 110711815  
 Conc: 47.86 ng/ml



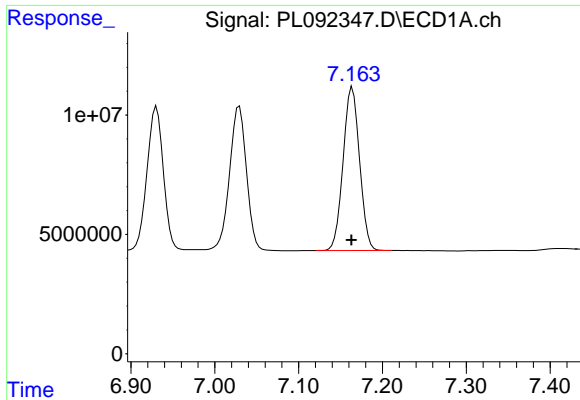
#18 Endrin aldehyde

R.T.: 6.931 min  
 Delta R.T.: 0.002 min  
 Response: 81304891  
 Conc: 46.65 ng/ml



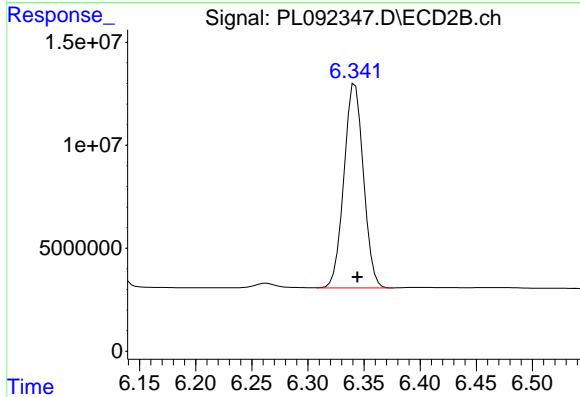
#18 Endrin aldehyde

R.T.: 6.119 min  
 Delta R.T.: -0.003 min  
 Response: 101120012  
 Conc: 49.55 ng/ml

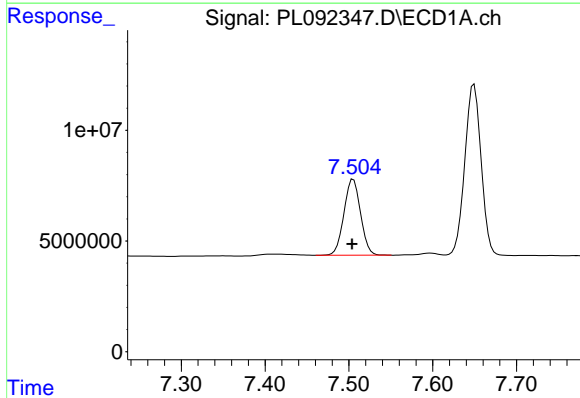


#19 Endosulfan Sulfate  
 R.T.: 7.164 min  
 Delta R.T.: 0.001 min  
 Response: 93520408  
 Conc: 47.18 ng/ml

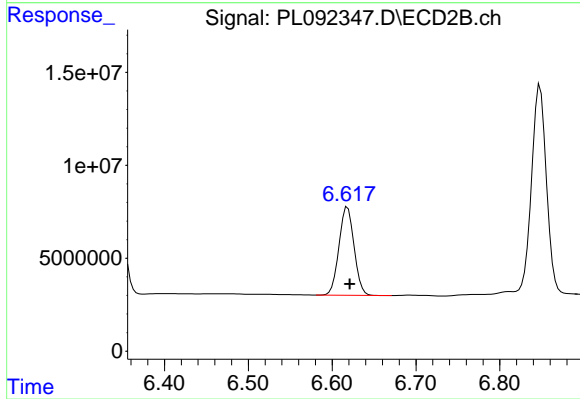
Instrument :  
 ECD\_L  
 ClientSampleId :  
 PSTDCCC050



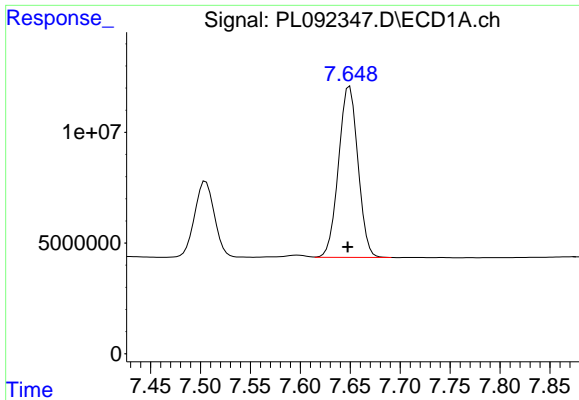
#19 Endosulfan Sulfate  
 R.T.: 6.342 min  
 Delta R.T.: -0.002 min  
 Response: 119884304  
 Conc: 49.69 ng/ml



#20 Methoxychlor  
 R.T.: 7.505 min  
 Delta R.T.: 0.002 min  
 Response: 47324615  
 Conc: 48.21 ng/ml



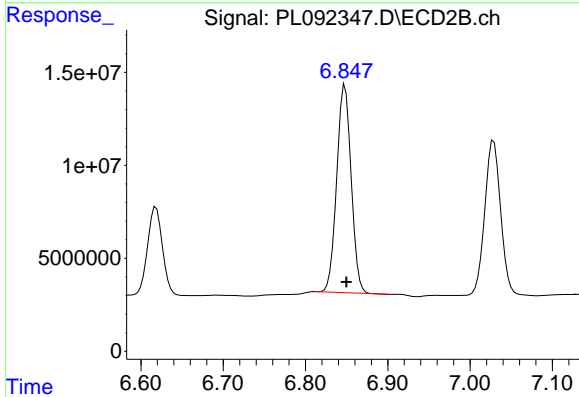
#20 Methoxychlor  
 R.T.: 6.618 min  
 Delta R.T.: -0.003 min  
 Response: 59382988  
 Conc: 47.49 ng/ml



#21 Endrin ketone

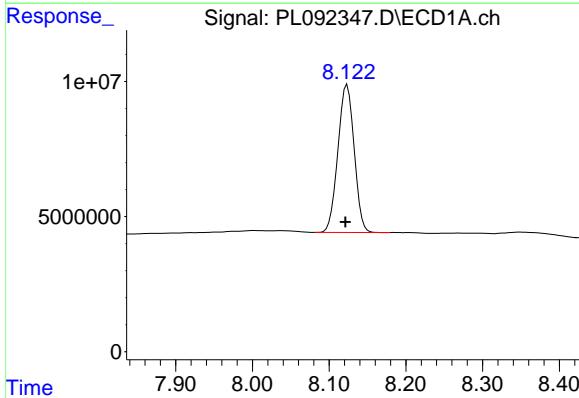
R.T.: 7.649 min  
 Delta R.T.: 0.002 min  
 Response: 104639089  
 Conc: 47.62 ng/ml

Instrument :  
 ECD\_L  
 ClientSampleId :  
 PSTDCCC050



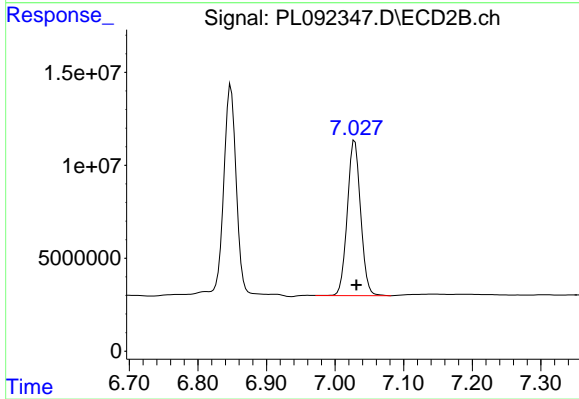
#21 Endrin ketone

R.T.: 6.848 min  
 Delta R.T.: -0.002 min  
 Response: 136375395  
 Conc: 49.25 ng/ml



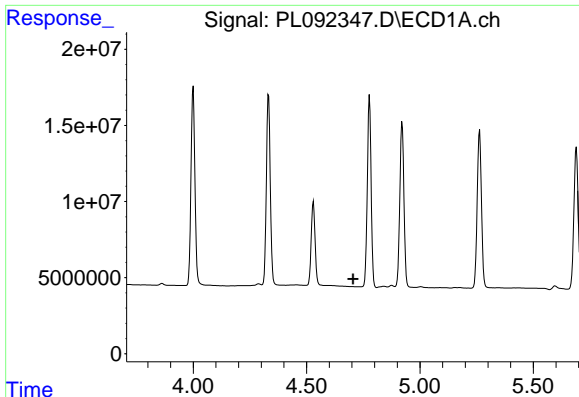
#22 Mirex

R.T.: 8.123 min  
 Delta R.T.: 0.002 min  
 Response: 80665149  
 Conc: 44.79 ng/ml



#22 Mirex

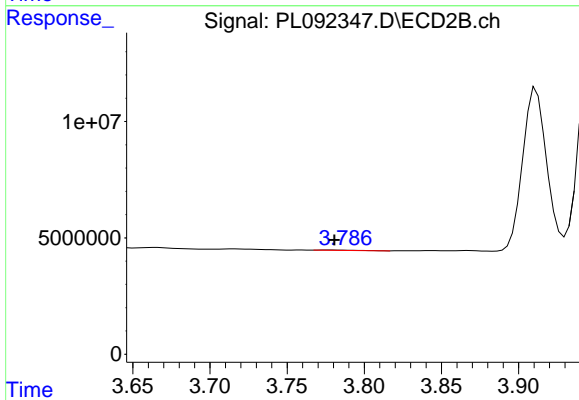
R.T.: 7.029 min  
 Delta R.T.: -0.003 min  
 Response: 112732974  
 Conc: 46.34 ng/ml



#23 Chlordane-1

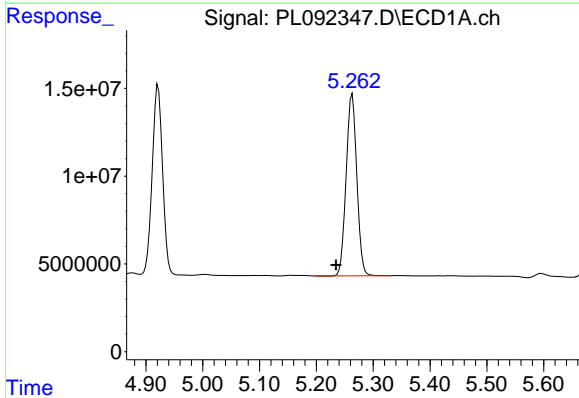
R.T.: 0.000 min  
 Exp R.T.: 4.706 min  
 Response: 0  
 Conc: N.D.

Instrument :  
 ECD\_L  
 ClientSampleId :  
 PSTDCCC050



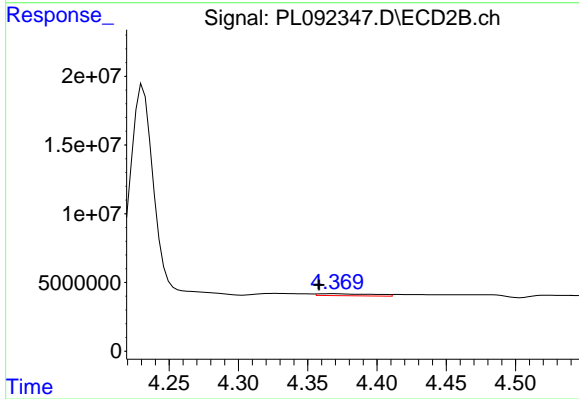
#23 Chlordane-1

R.T.: 3.776 min  
 Delta R.T.: -0.005 min  
 Response: 181948  
 Conc: 1.82 ng/ml



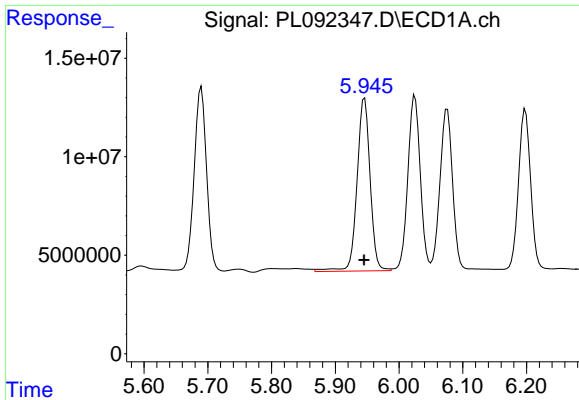
#24 Chlordane-2

R.T.: 5.263 min  
 Delta R.T.: 0.028 min  
 Response: 135096735  
 Conc: 1259.68 ng/ml



#24 Chlordane-2

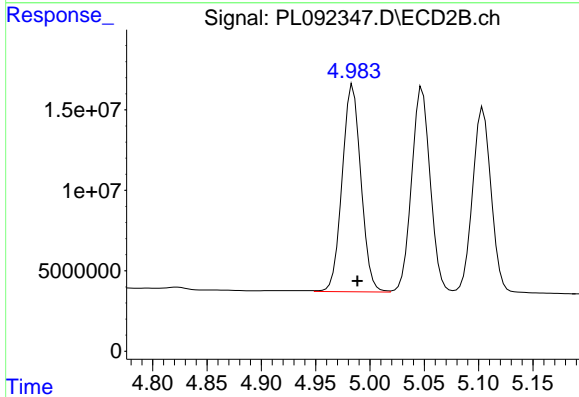
R.T.: 4.368 min  
 Delta R.T.: 0.010 min  
 Response: 4065255  
 Conc: 36.22 ng/ml



#25 Chlordane-3

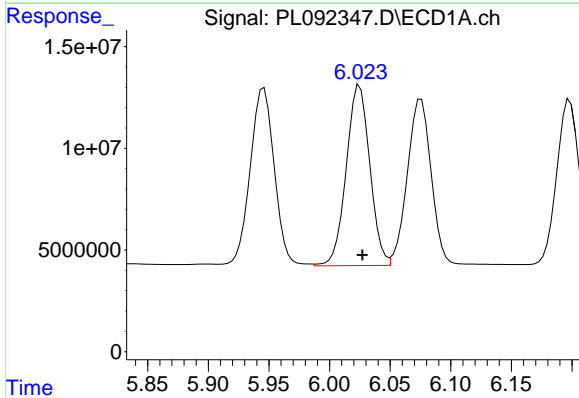
R.T.: 5.946 min  
 Delta R.T.: 0.000 min  
 Response: 125348563  
 Conc: 334.64 ng/ml

Instrument :  
 ECD\_L  
 ClientSampleId :  
 PSTDCCC050



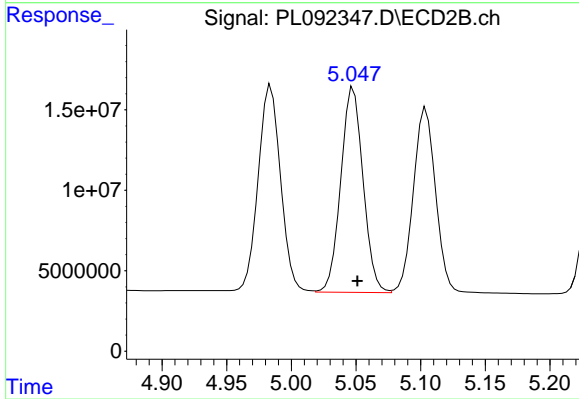
#25 Chlordane-3

R.T.: 4.984 min  
 Delta R.T.: -0.004 min  
 Response: 154878309  
 Conc: 467.59 ng/ml



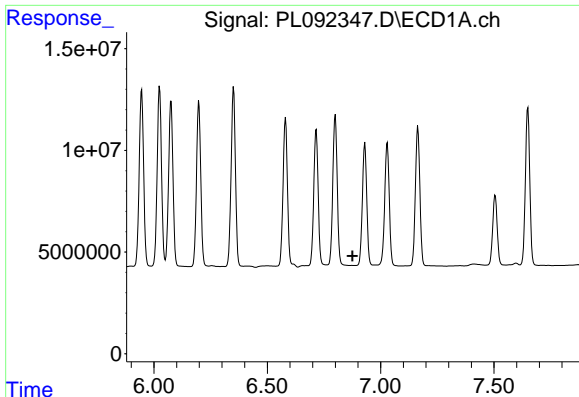
#26 Chlordane-4

R.T.: 6.025 min  
 Delta R.T.: -0.002 min  
 Response: 120152285  
 Conc: 265.33 ng/ml



#26 Chlordane-4

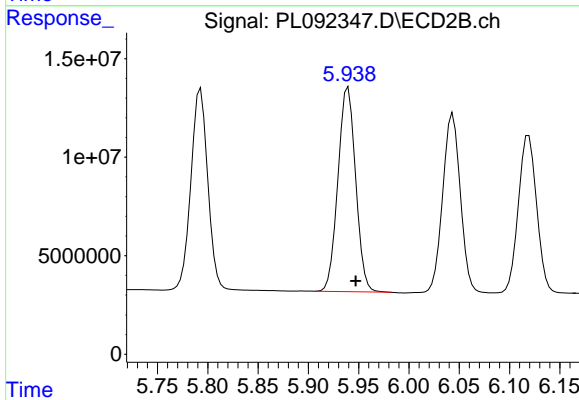
R.T.: 5.048 min  
 Delta R.T.: -0.003 min  
 Response: 152574692  
 Conc: 480.88 ng/ml



#27 Chlordane-5

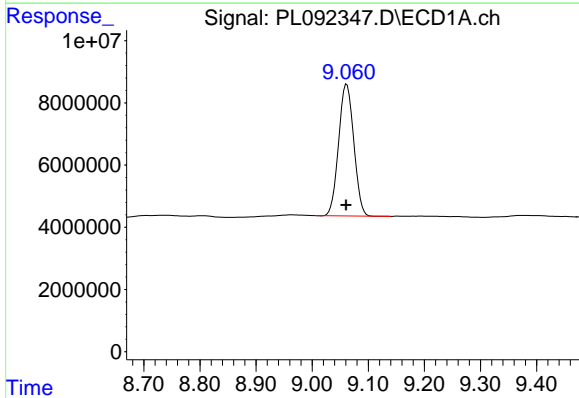
R.T.: 0.000 min  
 Exp R.T.: 6.876 min  
 Response: 0  
 Conc: N.D.

Instrument :  
 ECD\_L  
 ClientSampleId :  
 PSTDCCC050



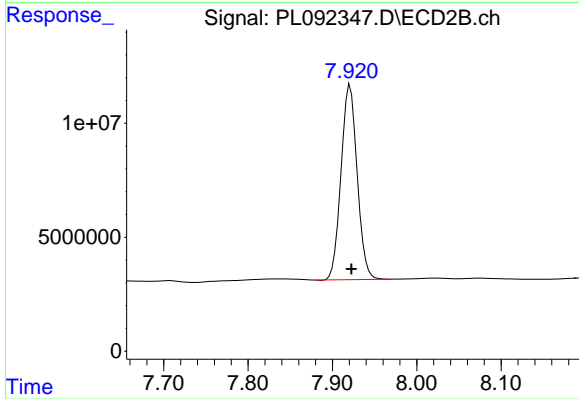
#27 Chlordane-5

R.T.: 5.940 min  
 Delta R.T.: -0.008 min  
 Response: 126918937  
 Conc: 1170.31 ng/ml



#28 Decachlorobiphenyl

R.T.: 9.062 min  
 Delta R.T.: 0.001 min  
 Response: 79418216  
 Conc: 48.48 ng/ml



#28 Decachlorobiphenyl

R.T.: 7.921 min  
 Delta R.T.: -0.002 min  
 Response: 113577398  
 Conc: 45.40 ng/ml