

Data Path : Z:\pestpcbsrv\HPCHEM1\ECD_L\Data\PL100524\
 Data File : PL092229.D
 Signal(s) : Signal #1: ECD1A.ch Signal #2: ECD2B.ch
 Acq On : 03 Oct 2024 18:43
 Operator : AR\AJ
 Sample : PSTDCCC050
 Misc :
 ALS Vial : 4 Sample Multiplier: 1

Instrument :
 ECD_L
 ClientSampleId :
 PSTDCCC050

Integration File signal 1: autoint1.e
 Integration File signal 2: autoint2.e
 Quant Time: Oct 04 02:08:52 2024
 Quant Method : Z:\pestpcbsrv\HPCHEM1\ECD_L\methods\PL092324.M
 Quant Title : GC Extractables
 QLast Update : Mon Sep 23 16:44:57 2024
 Response via : Initial Calibration
 Integrator: ChemStation

Volume Inj. : 1 µl
 Signal #1 Phase : ZB-MR2 Signal #2 Phase: ZB-MR1
 Signal #1 Info : 30M x 0.32mm x0.2 Signal #2 Info : 30M x 0.32mm x0.5µm

	Compound	RT#1	RT#2	Resp#1	Resp#2	ng/ml	ng/ml

System Monitoring Compounds							
1)	SA Tetrachlo...	3.542	2.781	114.7E6	134.9E6	51.562	53.795
28)	SA Decachlor...	9.058	7.920	83129389	126.9E6	50.743	50.704
Target Compounds							
2)	A alpha-BHC	3.998	3.284	159.1E6	201.1E6	51.374	55.209
3)	MA gamma-BHC...	4.331	3.614	154.9E6	193.6E6	49.991	54.817
4)	MA Heptachlor	4.920	3.953	134.8E6	178.7E6	48.748	51.776
5)	MB Aldrin	5.261	4.233	135.8E6	189.0E6	48.909	55.568
6)	B beta-BHC	4.528	3.913	67068451	79578243	50.565	52.943
7)	B delta-BHC	4.775	4.142	147.2E6	193.8E6	51.021	55.828
8)	Heptachlo...	5.688	4.736	130.9E6	162.2E6	51.432	53.648
9)	A Endosulfan I	6.073	5.106	114.8E6	143.2E6	49.624	52.164
10)	B gamma-Chl...	5.943	4.986	131.0E6	161.6E6	53.024	53.704
11)	B alpha-Chl...	6.022	5.049	123.1E6	159.8E6	49.955	53.396
12)	B 4,4'-DDE	6.195	5.239	107.7E6	158.1E6	49.739	56.906
13)	MA Dieldrin	6.348	5.370	118.0E6	158.6E6	48.385	54.092
14)	MA Endrin	6.577	5.646	91804029	128.0E6	44.550	48.824
15)	B Endosulfa...	6.797	5.940	103.0E6	133.0E6	46.829	53.166
16)	A 4,4'-DDD	6.713	5.793	86551697	125.3E6	48.199	58.639
17)	MA 4,4'-DDT	7.027	6.044	83798722	111.6E6	45.513	48.231
18)	B Endrin al...	6.927	6.120	85029756	107.6E6	48.790	52.743
19)	B Endosulfa...	7.161	6.342	95826999	126.4E6	48.342	52.388
20)	A Methoxychlor	7.502	6.618	46084737	60362979	46.943	48.277
21)	B Endrin ke...	7.646	6.848	111.3E6	152.2E6	50.637	54.959
22)	Mirex	8.120	7.028	85193586	120.6E6	47.304	49.580
23)	Chlordane-1	0.000	3.804f	0	30264	N.D.	0.303 #
24)	Chlordane-2	5.261f	4.369	135.8E6	10344065	1266.689	92.172 #
25)	Chlordane-3	5.943	4.986	131.0E6	161.6E6	349.815	487.797 #
26)	Chlordane-4	6.022	5.049	123.1E6	159.8E6	271.737	503.789 #
27)	Chlordane-5	0.000	5.940	0	133.0E6	N.D.	1226.774 #

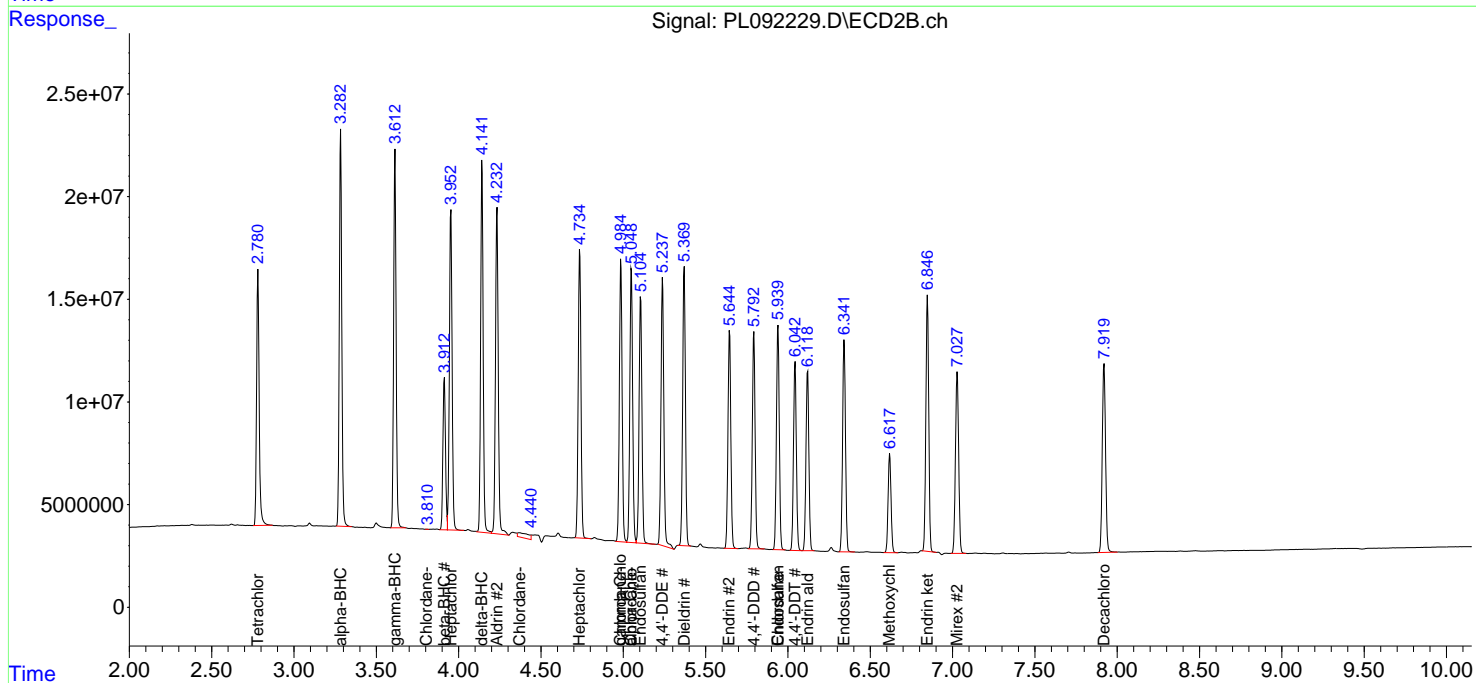
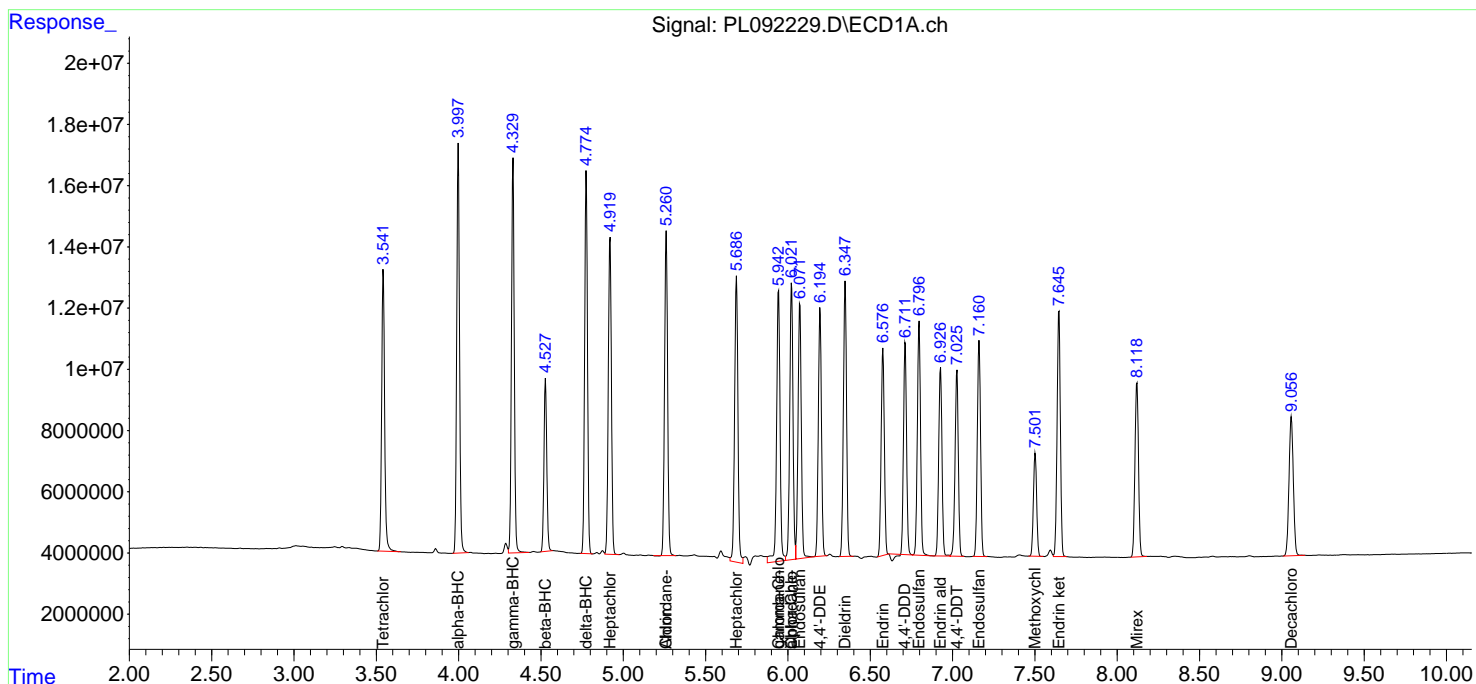
(f)=RT Delta > 1/2 Window (#)=Amounts differ by > 25% (m)=manual int.

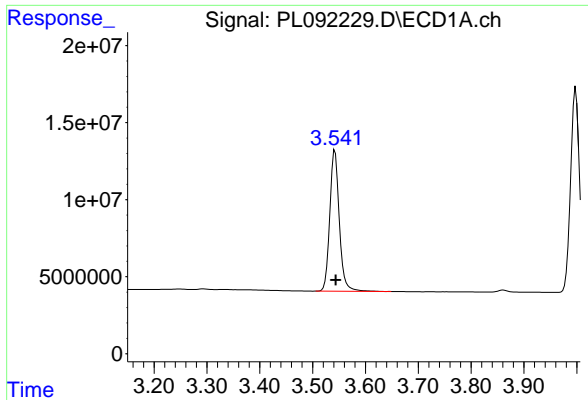
Data Path : Z:\pestpcbsrv\HPCHEM1\ECD_L\Data\PL100524\
 Data File : PL092229.D
 Signal(s) : Signal #1: ECD1A.ch Signal #2: ECD2B.ch
 Acq On : 03 Oct 2024 18:43
 Operator : AR\AJ
 Sample : PSTDCCC050
 Misc :
 ALS Vial : 4 Sample Multiplier: 1

Instrument :
 ECD_L
 ClientSampleId :
 PSTDCCC050

Integration File signal 1: autoint1.e
 Integration File signal 2: autoint2.e
 Quant Time: Oct 04 02:08:52 2024
 Quant Method : Z:\pestpcbsrv\HPCHEM1\ECD_L\methods\PL092324.M
 Quant Title : GC Extractables
 QLast Update : Mon Sep 23 16:44:57 2024
 Response via : Initial Calibration
 Integrator: ChemStation

Volume Inj. : 1 µl
 Signal #1 Phase : ZB-MR2 Signal #2 Phase: ZB-MR1
 Signal #1 Info : 30M x 0.32mm x0.2 Signal #2 Info : 30M x 0.32mm x0.5µm

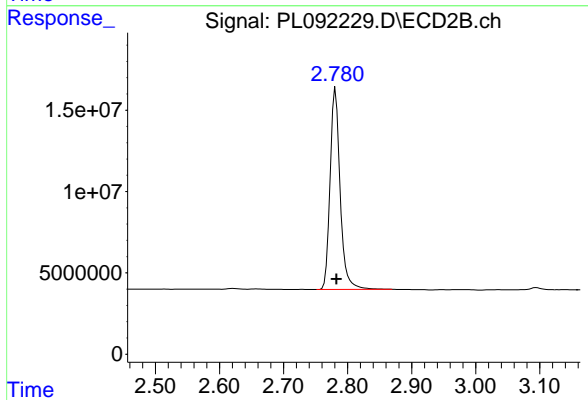




#1 Tetrachloro-m-xylene

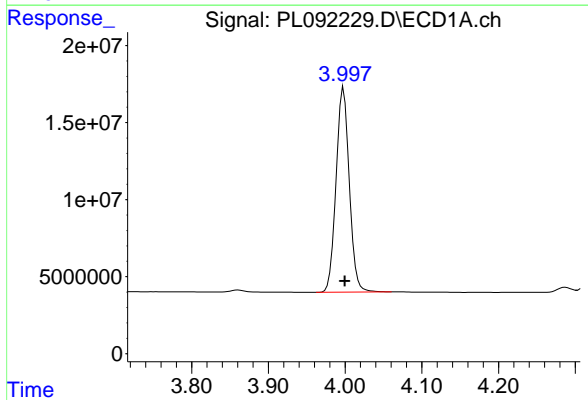
R.T.: 3.542 min
 Delta R.T.: -0.002 min
 Response: 114707063
 Conc: 51.56 ng/ml

Instrument :
 ECD_L
 ClientSampleId :
 PSTDCCC050



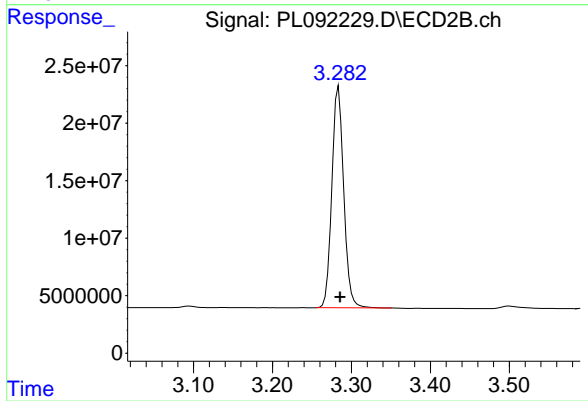
#1 Tetrachloro-m-xylene

R.T.: 2.781 min
 Delta R.T.: 0.000 min
 Response: 134922097
 Conc: 53.80 ng/ml



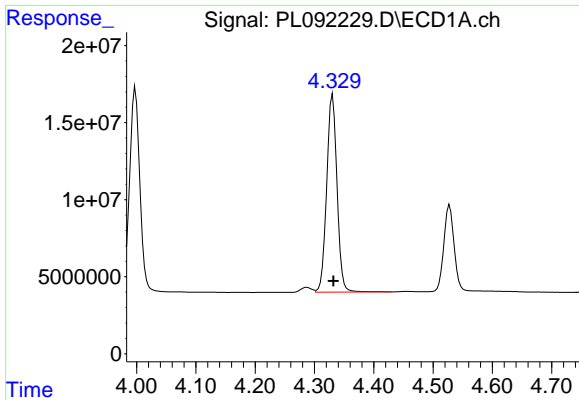
#2 alpha-BHC

R.T.: 3.998 min
 Delta R.T.: -0.001 min
 Response: 159079337
 Conc: 51.37 ng/ml



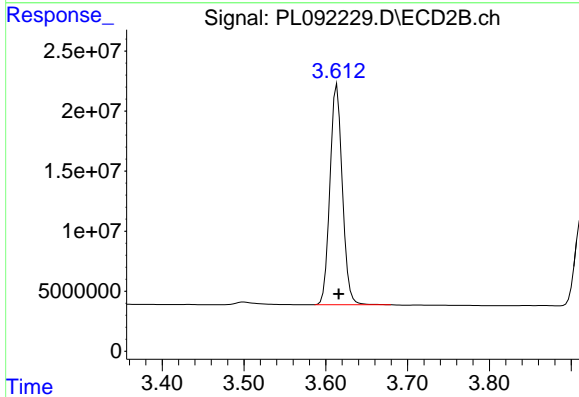
#2 alpha-BHC

R.T.: 3.284 min
 Delta R.T.: -0.002 min
 Response: 201143138
 Conc: 55.21 ng/ml

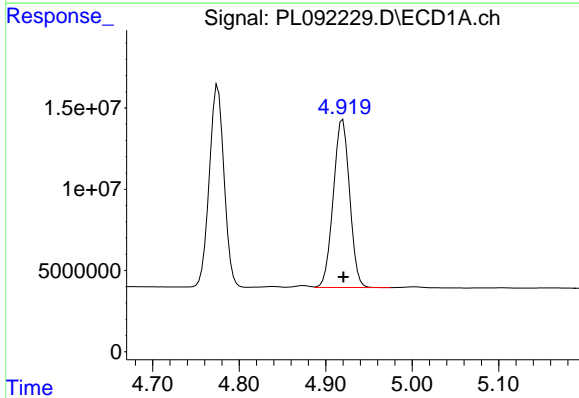


#3 gamma-BHC (Lindane)
 R.T.: 4.331 min
 Delta R.T.: -0.002 min
 Response: 154910988
 Conc: 49.99 ng/ml

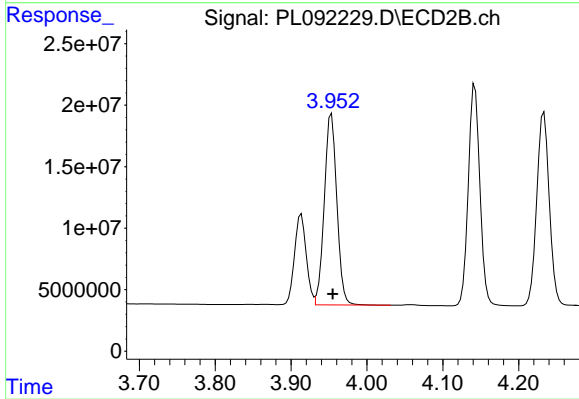
Instrument :
 ECD_L
 ClientSampleId :
 PSTDCCC050



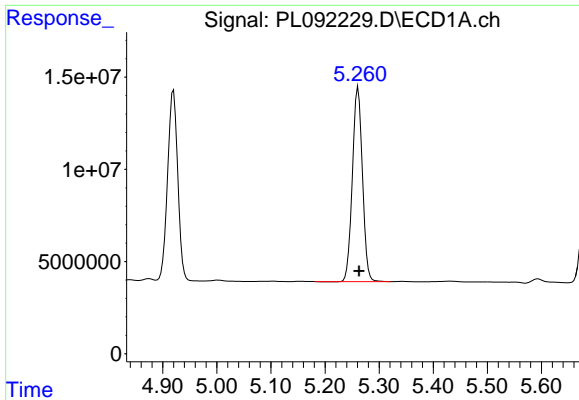
#3 gamma-BHC (Lindane)
 R.T.: 3.614 min
 Delta R.T.: -0.002 min
 Response: 193558409
 Conc: 54.82 ng/ml



#4 Heptachlor
 R.T.: 4.920 min
 Delta R.T.: 0.000 min
 Response: 134811145
 Conc: 48.75 ng/ml

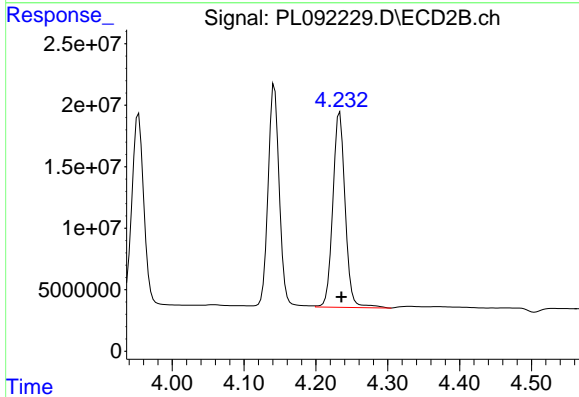


#4 Heptachlor
 R.T.: 3.953 min
 Delta R.T.: -0.002 min
 Response: 178659441
 Conc: 51.78 ng/ml

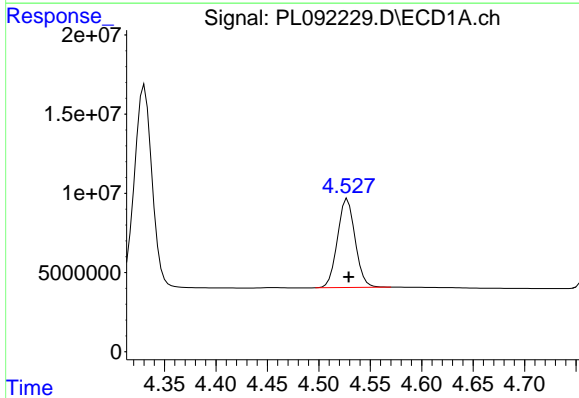


#5 Aldrin
R.T.: 5.261 min
Delta R.T.: -0.002 min
Response: 135848071
Conc: 48.91 ng/ml

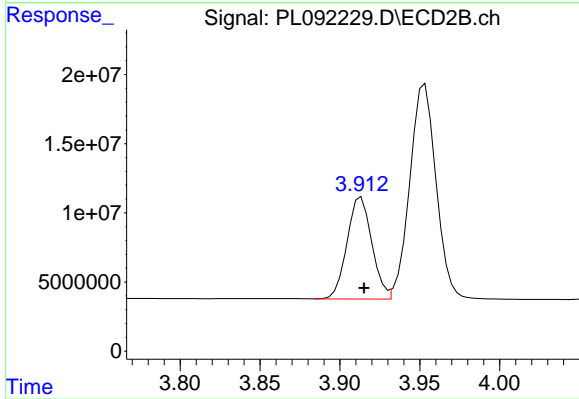
Instrument :
ECD_L
ClientSampleId :
PSTDCCC050



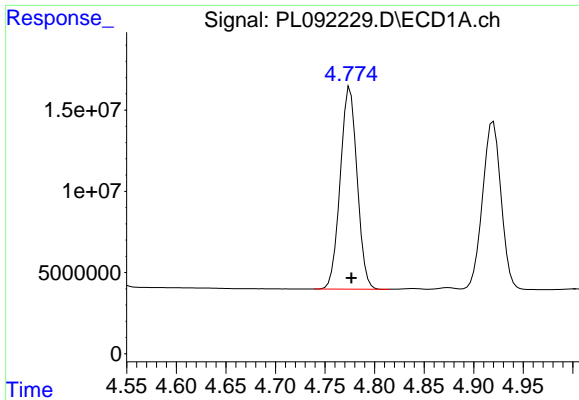
#5 Aldrin
R.T.: 4.233 min
Delta R.T.: -0.002 min
Response: 188991405
Conc: 55.57 ng/ml



#6 beta-BHC
R.T.: 4.528 min
Delta R.T.: -0.001 min
Response: 67068451
Conc: 50.57 ng/ml

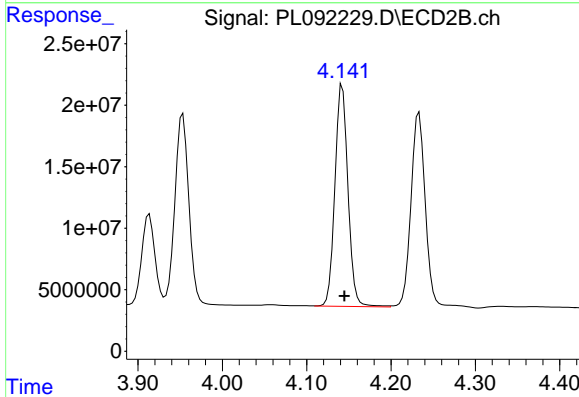


#6 beta-BHC
R.T.: 3.913 min
Delta R.T.: -0.002 min
Response: 79578243
Conc: 52.94 ng/ml

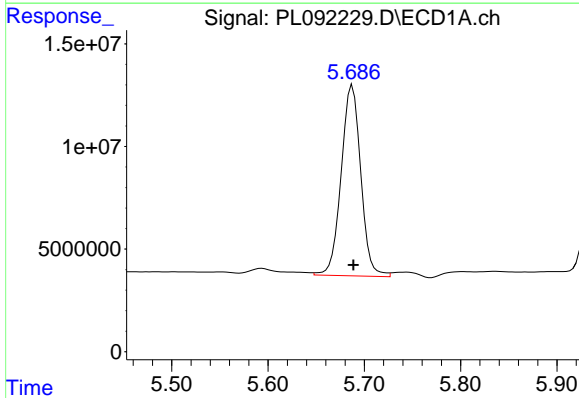


#7 delta-BHC
 R.T.: 4.775 min
 Delta R.T.: -0.001 min
 Response: 147154030
 Conc: 51.02 ng/ml

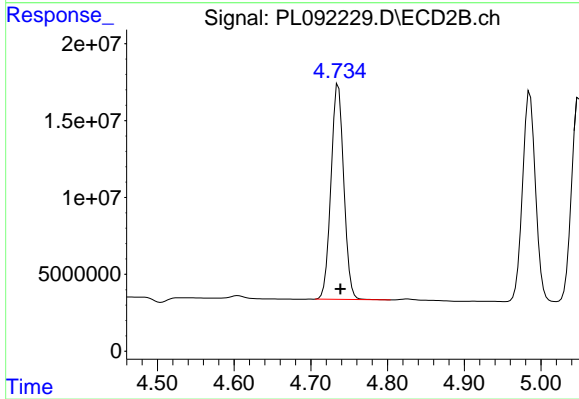
Instrument :
 ECD_L
 ClientSampleId :
 PSTDCCC050



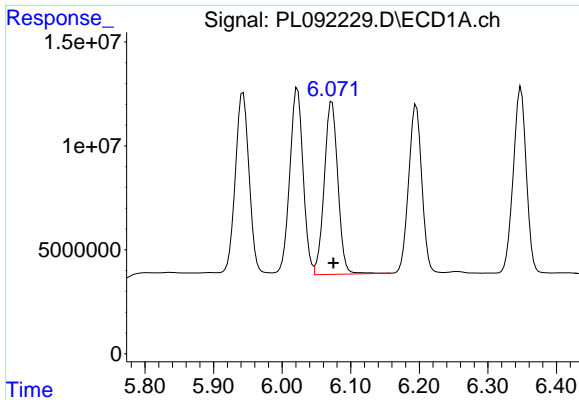
#7 delta-BHC
 R.T.: 4.142 min
 Delta R.T.: -0.002 min
 Response: 193816347
 Conc: 55.83 ng/ml



#8 Heptachlor epoxide
 R.T.: 5.688 min
 Delta R.T.: -0.001 min
 Response: 130893221
 Conc: 51.43 ng/ml



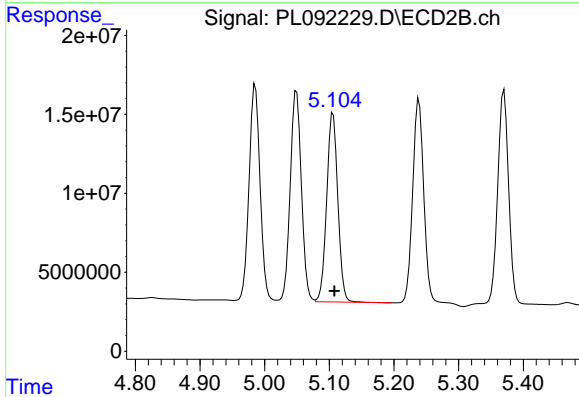
#8 Heptachlor epoxide
 R.T.: 4.736 min
 Delta R.T.: -0.002 min
 Response: 162171838
 Conc: 53.65 ng/ml



#9 Endosulfan I

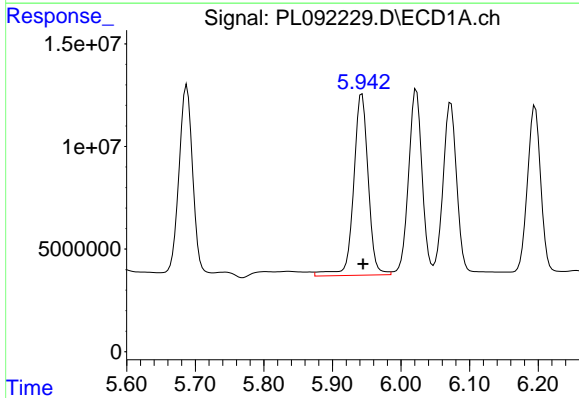
R.T.: 6.073 min
 Delta R.T.: -0.002 min
 Response: 114799554
 Conc: 49.62 ng/ml

Instrument :
 ECD_L
 ClientSampleId :
 PSTDCCC050



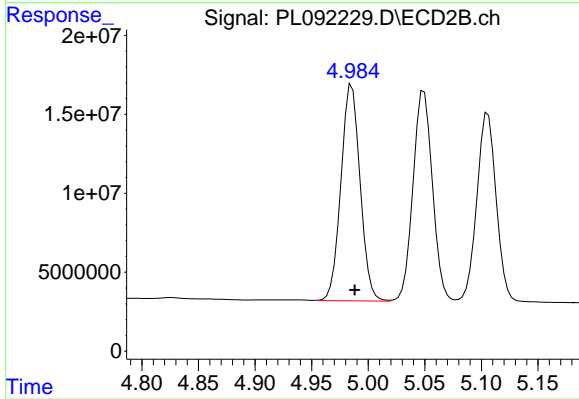
#9 Endosulfan I

R.T.: 5.106 min
 Delta R.T.: -0.002 min
 Response: 143170553
 Conc: 52.16 ng/ml



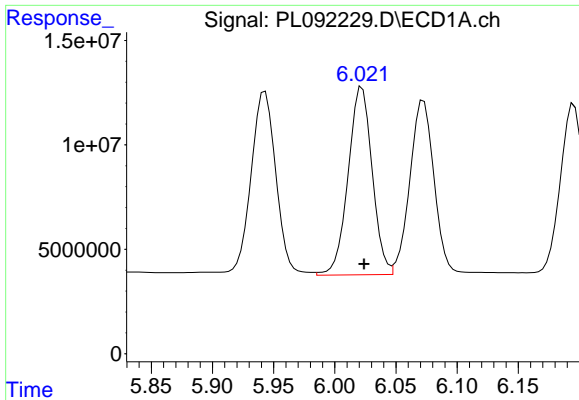
#10 gamma-Chlordane

R.T.: 5.943 min
 Delta R.T.: -0.002 min
 Response: 131032520
 Conc: 53.02 ng/ml



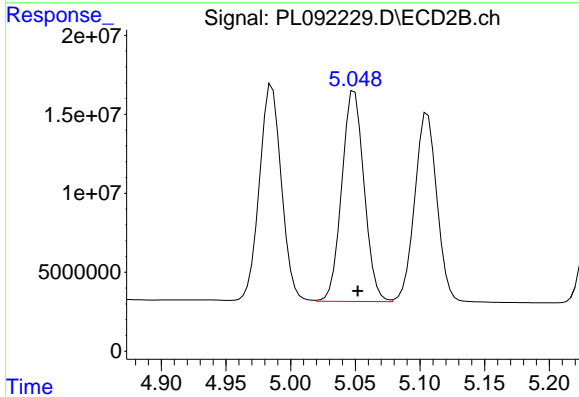
#10 gamma-Chlordane

R.T.: 4.986 min
 Delta R.T.: -0.003 min
 Response: 161572262
 Conc: 53.70 ng/ml

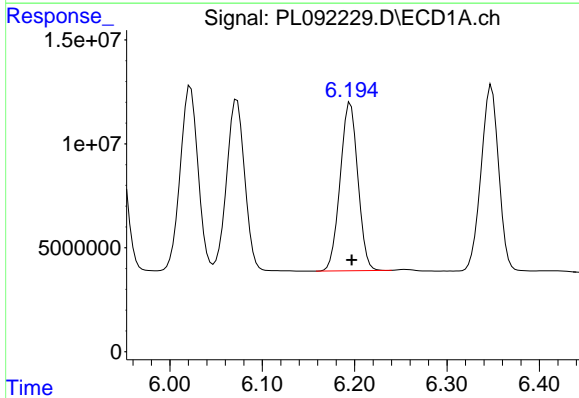


#11 alpha-Chlordane
 R.T.: 6.022 min
 Delta R.T.: -0.001 min
 Response: 123055042
 Conc: 49.95 ng/ml

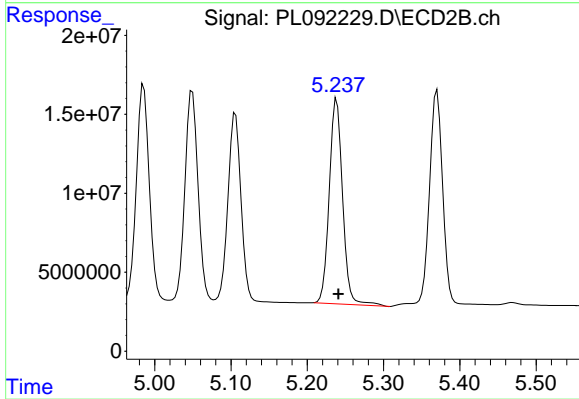
Instrument :
 ECD_L
 ClientSampleId :
 PSTDCCC050



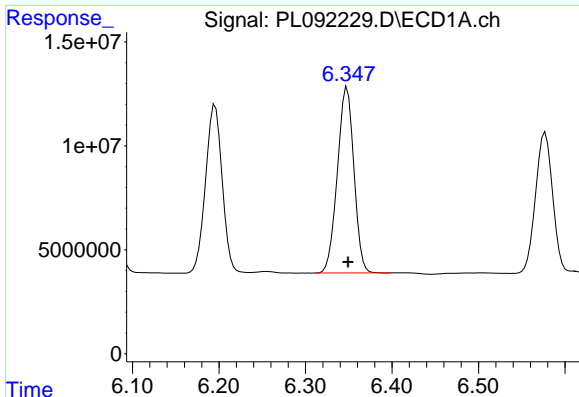
#11 alpha-Chlordane
 R.T.: 5.049 min
 Delta R.T.: -0.003 min
 Response: 159843294
 Conc: 53.40 ng/ml



#12 4,4'-DDE
 R.T.: 6.195 min
 Delta R.T.: -0.001 min
 Response: 107656131
 Conc: 49.74 ng/ml



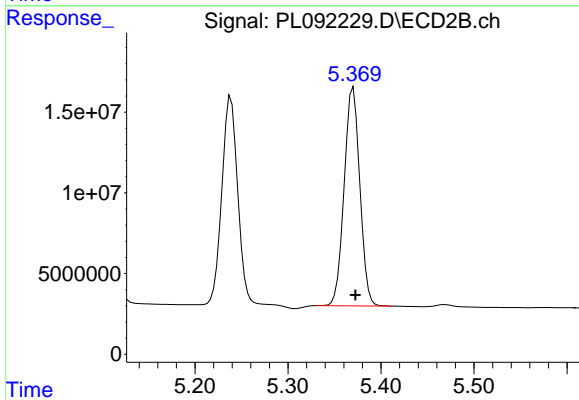
#12 4,4'-DDE
 R.T.: 5.239 min
 Delta R.T.: -0.002 min
 Response: 158132545
 Conc: 56.91 ng/ml



#13 Dieldrin

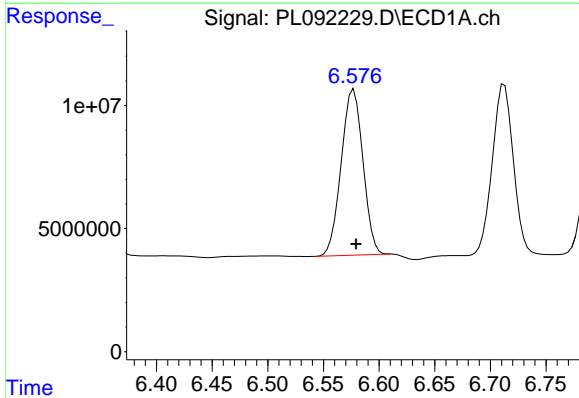
R.T.: 6.348 min
 Delta R.T.: -0.001 min
 Response: 118005307
 Conc: 48.39 ng/ml

Instrument :
 ECD_L
 ClientSampleId :
 PSTDCCC050



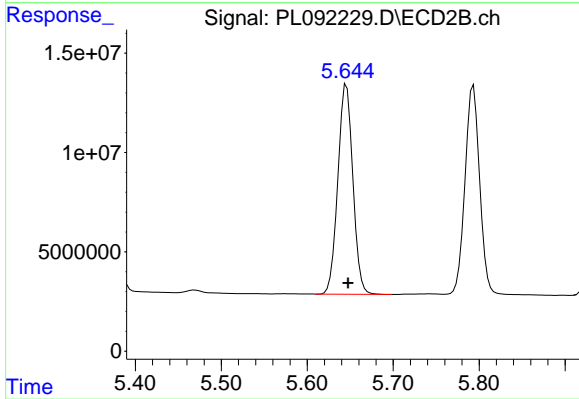
#13 Dieldrin

R.T.: 5.370 min
 Delta R.T.: -0.002 min
 Response: 158588161
 Conc: 54.09 ng/ml



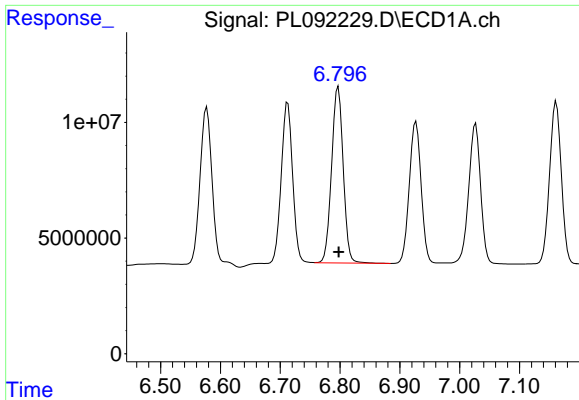
#14 Endrin

R.T.: 6.577 min
 Delta R.T.: -0.002 min
 Response: 91804029
 Conc: 44.55 ng/ml



#14 Endrin

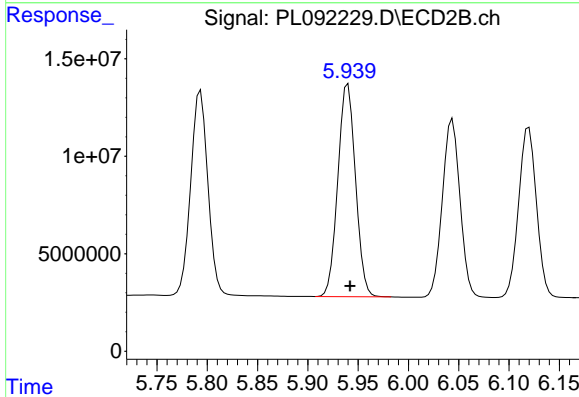
R.T.: 5.646 min
 Delta R.T.: -0.002 min
 Response: 128026598
 Conc: 48.82 ng/ml



#15 Endosulfan II

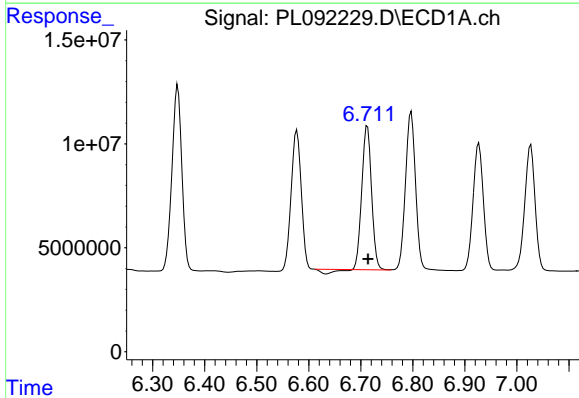
R.T.: 6.797 min
 Delta R.T.: -0.001 min
 Response: 103011652
 Conc: 46.83 ng/ml

Instrument :
 ECD_L
 ClientSampleId :
 PSTDCCC050



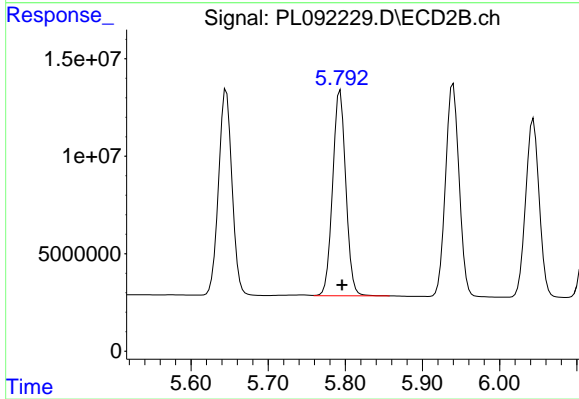
#15 Endosulfan II

R.T.: 5.940 min
 Delta R.T.: -0.002 min
 Response: 133042910
 Conc: 53.17 ng/ml



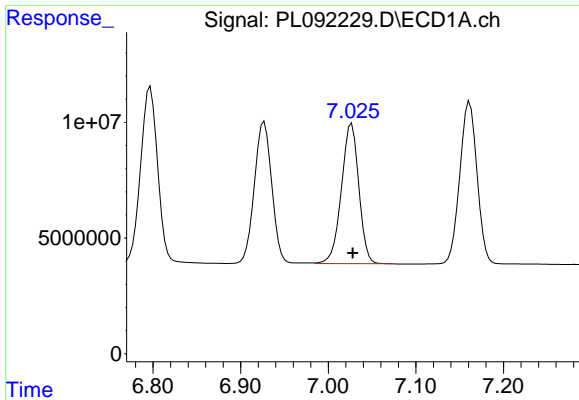
#16 4,4'-DDD

R.T.: 6.713 min
 Delta R.T.: -0.002 min
 Response: 86551697
 Conc: 48.20 ng/ml



#16 4,4'-DDD

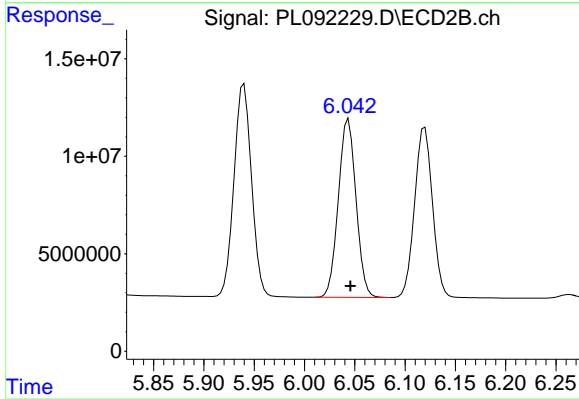
R.T.: 5.793 min
 Delta R.T.: -0.002 min
 Response: 125265913
 Conc: 58.64 ng/ml



#17 4,4'-DDT

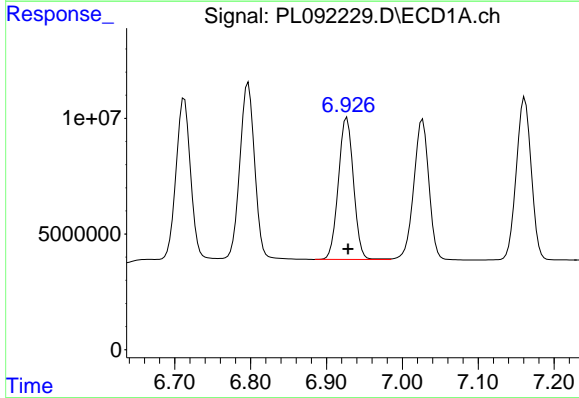
R.T.: 7.027 min
 Delta R.T.: -0.001 min
 Response: 83798722
 Conc: 45.51 ng/ml

Instrument :
 ECD_L
 ClientSampleId :
 PSTDCCC050



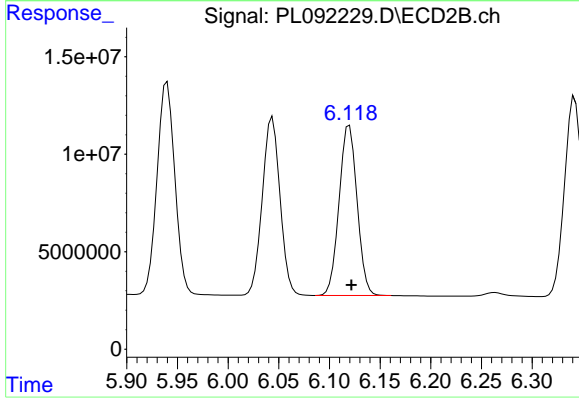
#17 4,4'-DDT

R.T.: 6.044 min
 Delta R.T.: -0.002 min
 Response: 111566534
 Conc: 48.23 ng/ml



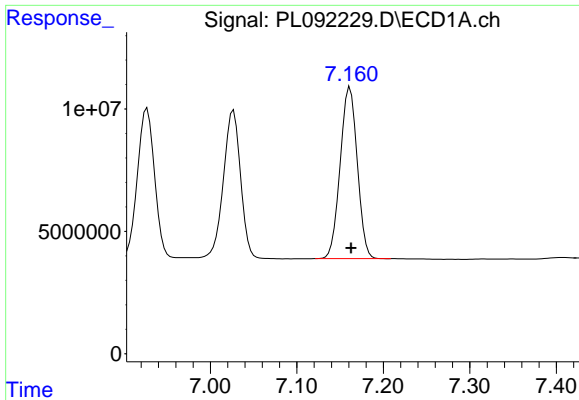
#18 Endrin aldehyde

R.T.: 6.927 min
 Delta R.T.: -0.001 min
 Response: 85029756
 Conc: 48.79 ng/ml



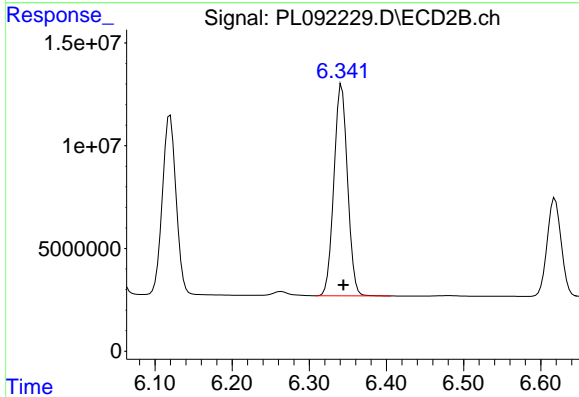
#18 Endrin aldehyde

R.T.: 6.120 min
 Delta R.T.: -0.002 min
 Response: 107634322
 Conc: 52.74 ng/ml

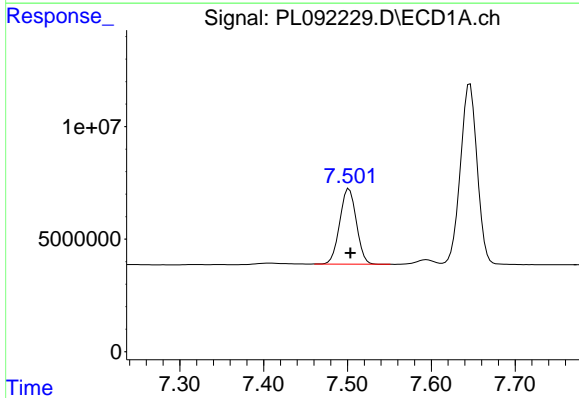


#19 Endosulfan Sulfate
 R.T.: 7.161 min
 Delta R.T.: -0.001 min
 Response: 95826999
 Conc: 48.34 ng/ml

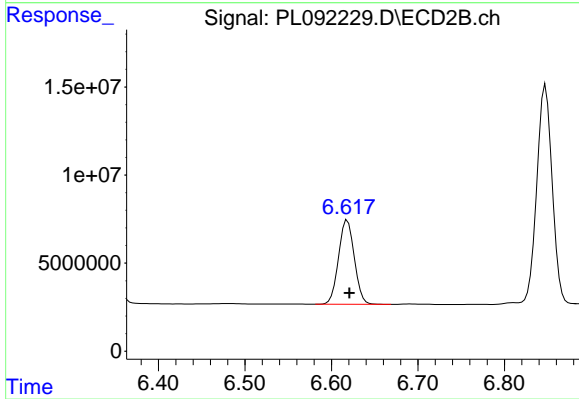
Instrument :
 ECD_L
 ClientSampleId :
 PSTDCCC050



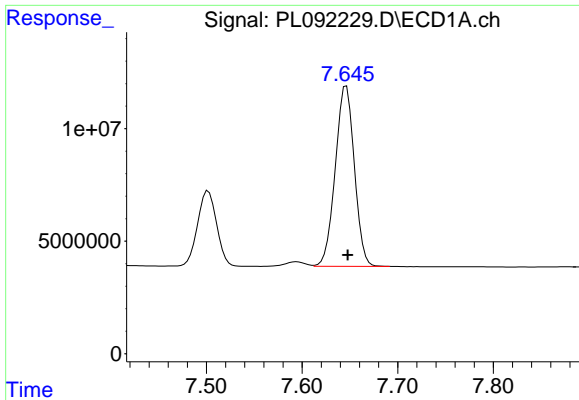
#19 Endosulfan Sulfate
 R.T.: 6.342 min
 Delta R.T.: -0.002 min
 Response: 126388094
 Conc: 52.39 ng/ml



#20 Methoxychlor
 R.T.: 7.502 min
 Delta R.T.: -0.002 min
 Response: 46084737
 Conc: 46.94 ng/ml



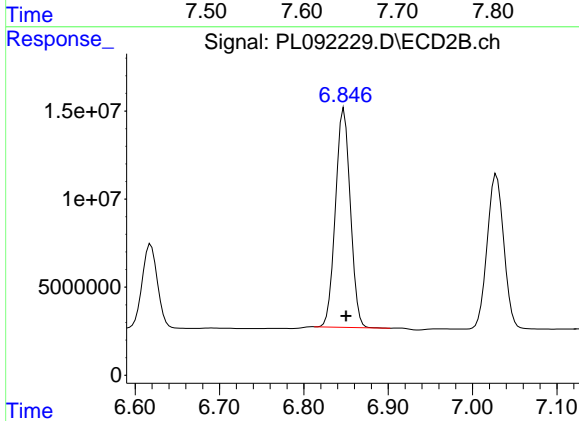
#20 Methoxychlor
 R.T.: 6.618 min
 Delta R.T.: -0.002 min
 Response: 60362979
 Conc: 48.28 ng/ml



#21 Endrin ketone

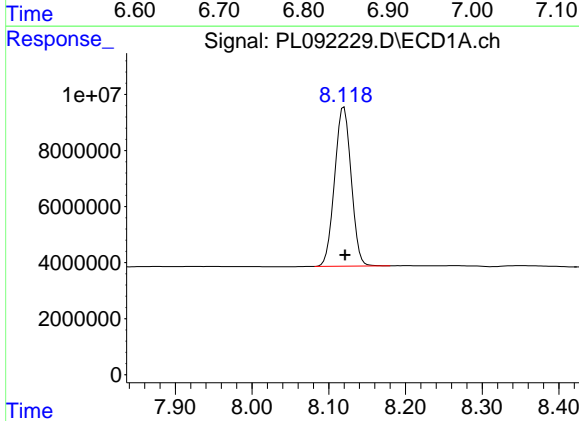
R.T.: 7.646 min
 Delta R.T.: -0.001 min
 Response: 111279119
 Conc: 50.64 ng/ml

Instrument :
 ECD_L
 ClientSampleId :
 PSTDCCC050



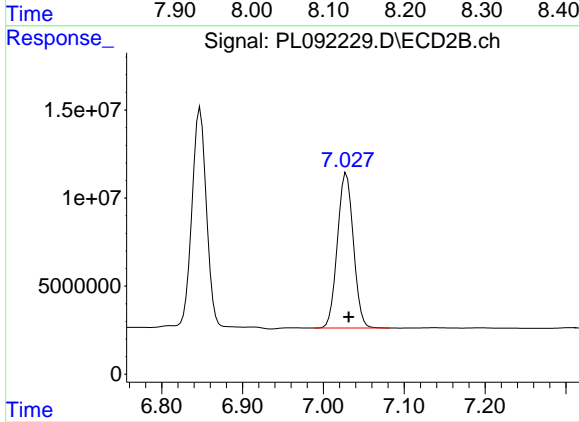
#21 Endrin ketone

R.T.: 6.848 min
 Delta R.T.: -0.002 min
 Response: 152178170
 Conc: 54.96 ng/ml



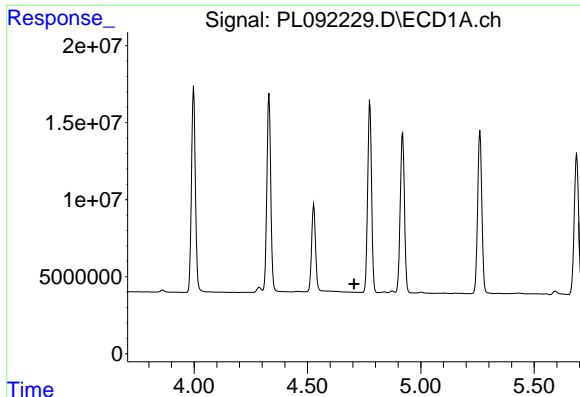
#22 Mirex

R.T.: 8.120 min
 Delta R.T.: -0.002 min
 Response: 85193586
 Conc: 47.30 ng/ml



#22 Mirex

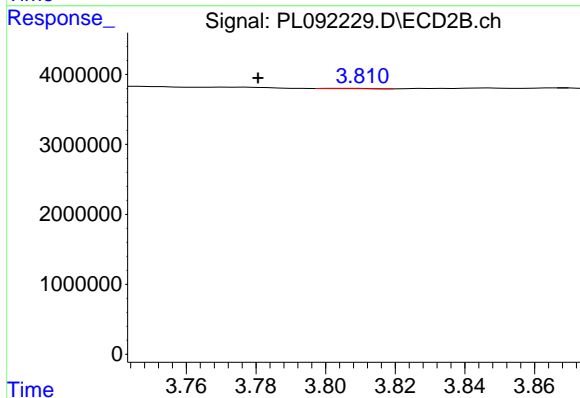
R.T.: 7.028 min
 Delta R.T.: -0.003 min
 Response: 120611179
 Conc: 49.58 ng/ml



#23 Chlordane-1

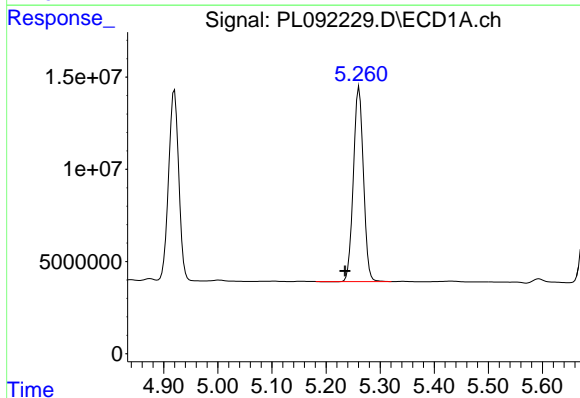
R.T.: 0.000 min
 Exp R.T.: 4.706 min
 Response: 0
 Conc: N.D.

Instrument :
 ECD_L
 ClientSampleId :
 PSTDCCC050



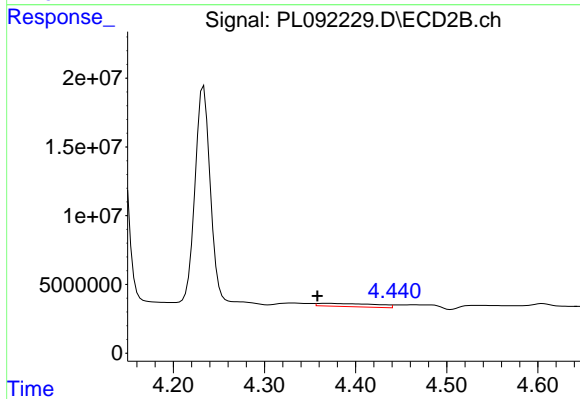
#23 Chlordane-1

R.T.: 3.804 min
 Delta R.T.: 0.023 min
 Response: 30264
 Conc: 0.30 ng/ml



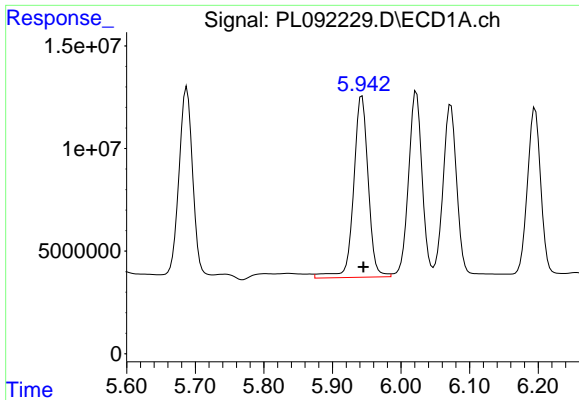
#24 Chlordane-2

R.T.: 5.261 min
 Delta R.T.: 0.026 min
 Response: 135848071
 Conc: 1266.69 ng/ml



#24 Chlordane-2

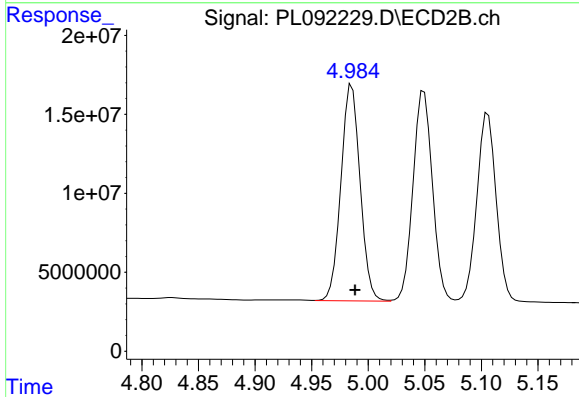
R.T.: 4.369 min
 Delta R.T.: 0.011 min
 Response: 10344065
 Conc: 92.17 ng/ml



#25 Chlordane-3

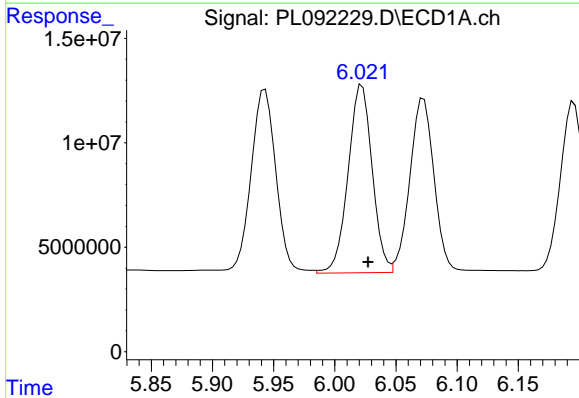
R.T.: 5.943 min
 Delta R.T.: -0.002 min
 Response: 131032520
 Conc: 349.81 ng/ml

Instrument :
 ECD_L
 ClientSampleId :
 PSTDCCC050



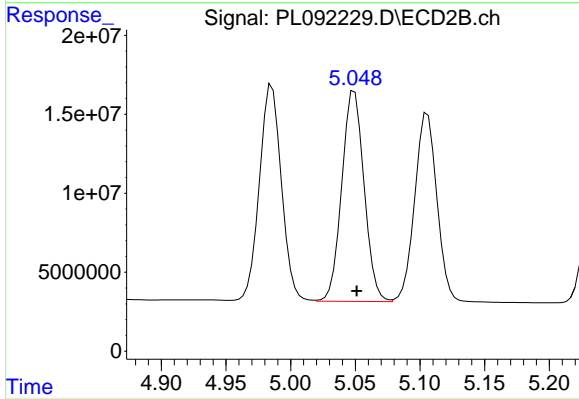
#25 Chlordane-3

R.T.: 4.986 min
 Delta R.T.: -0.003 min
 Response: 161572262
 Conc: 487.80 ng/ml



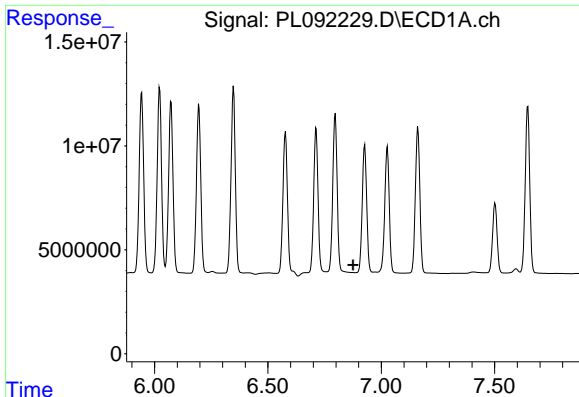
#26 Chlordane-4

R.T.: 6.022 min
 Delta R.T.: -0.005 min
 Response: 123055042
 Conc: 271.74 ng/ml



#26 Chlordane-4

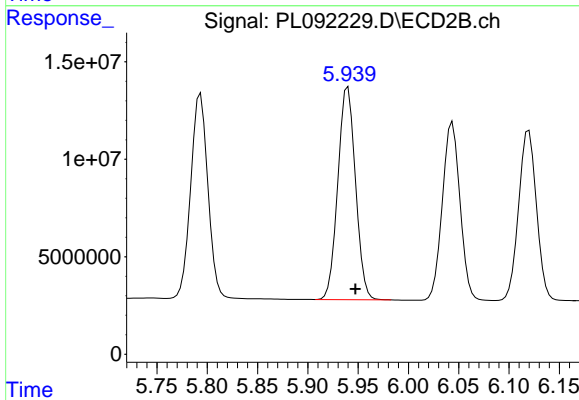
R.T.: 5.049 min
 Delta R.T.: -0.002 min
 Response: 159843294
 Conc: 503.79 ng/ml



#27 Chlordane-5

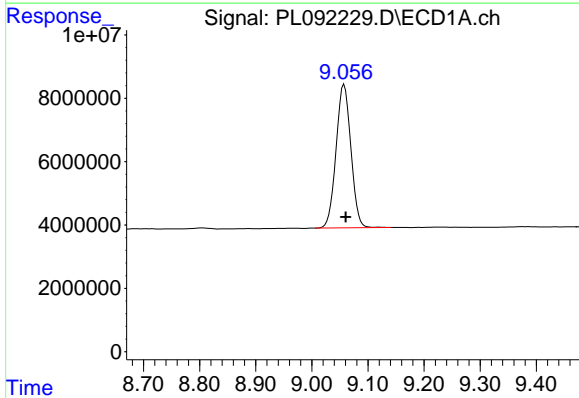
R.T.: 0.000 min
 Exp R.T.: 6.876 min
 Response: 0
 Conc: N.D.

Instrument :
 ECD_L
 ClientSampleId :
 PSTDCCC050



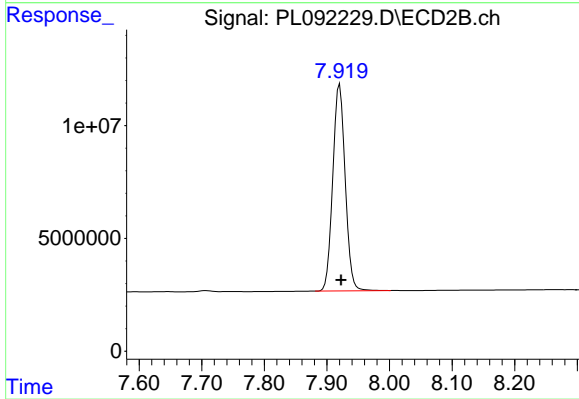
#27 Chlordane-5

R.T.: 5.940 min
 Delta R.T.: -0.007 min
 Response: 133042910
 Conc: 1226.77 ng/ml



#28 Decachlorobiphenyl

R.T.: 9.058 min
 Delta R.T.: -0.003 min
 Response: 83129389
 Conc: 50.74 ng/ml



#28 Decachlorobiphenyl

R.T.: 7.920 min
 Delta R.T.: -0.002 min
 Response: 126858190
 Conc: 50.70 ng/ml