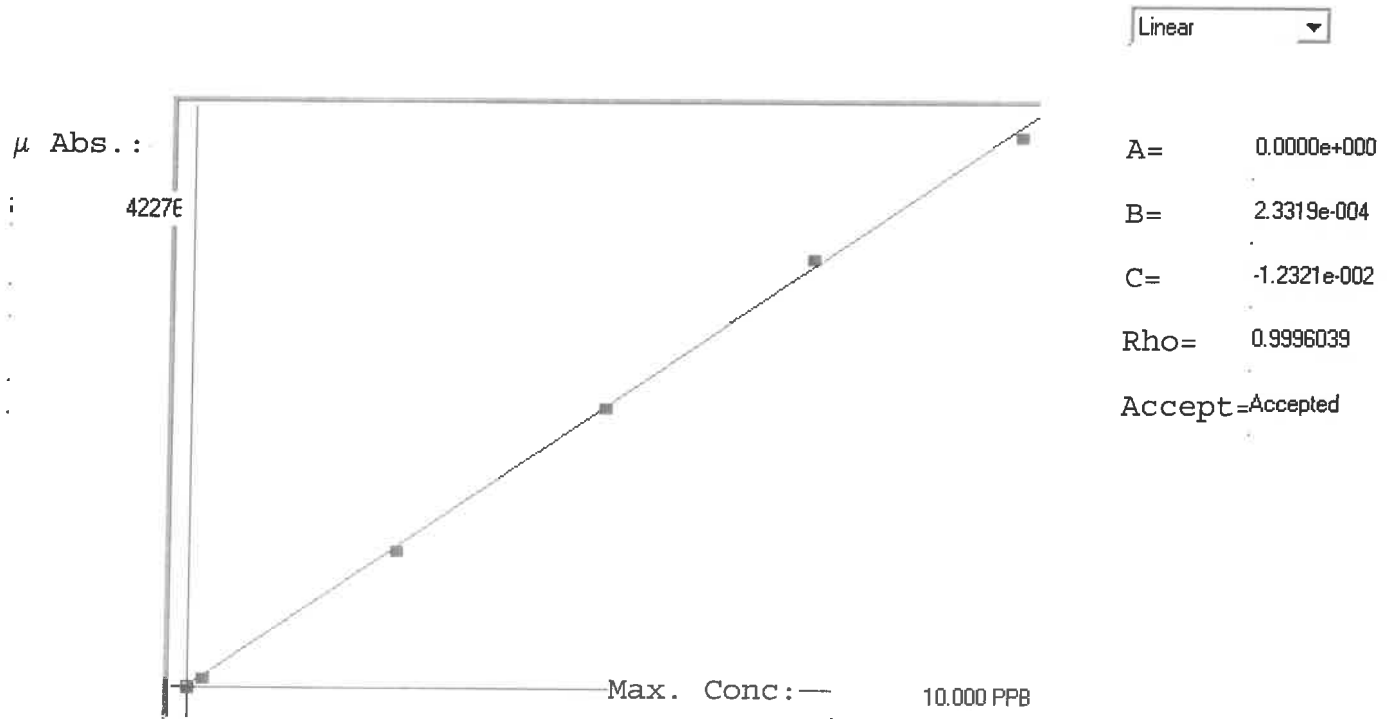


LB132999

7470A

INSTRUMENT ID: CV1



Std ID	Conc.	Calc.	Dev.	Mean	SD or %RSD	Rep 1	Rep 2	Rep 3	Rep 4	Rep 5	%D
0.0	0.000	-0.010	-0.010	12	0.000	12	0				1
0.2	0.200	0.189	-0.011	864	0.0 %	864					-6
2.5	2.500	2.452	-0.048	10566	0.0 %	10566					-2
5.0	5.000	5.029	0.029	21619	0.0 %	21619					1
7.5	7.500	7.694	0.194	33047	0.0 %	33047					3
10.0	10.000	9.846	-0.154	42276	0.0 %	42276					-2

LB132999 INSTRUMENT ID : CV1

Method: 7470A

Operator: Admin

Date of Analysis: 18 Oct 2024 11:35:09

Sample ID	Extended ID	µ Abs.	Conc.	Std Conc	Method	Units	Date	Type	Type
0.0 - 1	SB	12	-	0.0000	7470A	PPB	18 Oct 2024 11:37:13	S	Std
0.2 - 1	SB-2	864	-	0.2000	7470A	PPB	18 Oct 2024 11:39:29	S	Std
2.5 - 1	SB-2	10566	-	2.5000	7470A	PPB	18 Oct 2024 11:41:46	S	Std
5.0 - 1	SB	21619	-	5.0000	7470A	PPB	18 Oct 2024 11:44:03	S	Std
7.5 - 1	SB	33047	-	7.5000	7470A	PPB	18 Oct 2024 11:48:57	S	Std
10.0 - 1	SB	42276	-	10.0000	7470A	PPB	18 Oct 2024 11:57:04	S	Std
ICV43 - 1	ICV43	16550	3.8470	-7470A	PPB	18 Oct 2024 12:00:27	U	SMPL	
ICB43 - 1	ICB43	-299	-0.0820	-7470A	PPB	18 Oct 2024 12:02:42	U	SMPL	
CCV39 - 1	CCV39	21513	5.0043	-7470A	PPB	18 Oct 2024 12:04:59	U	SMPL	
CCB39 - 1	CCB39	-343	-0.0923	-7470A	PPB	18 Oct 2024 12:07:14	U	SMPL	
CRA - 1	CRA	852	0.1864	-7470A	PPB	18 Oct 2024 12:15:15	U	SMPL	
HighStd - 1	HighStd	41500	9.6650	-7470A	PPB	18 Oct 2024 12:17:30	U	SMPL	
ChkStd - 1	ChkStd	28303	6.5876	-7470A	PPB	18 Oct 2024 12:19:45	U	SMPL	
PB164250BL - 1	PBW	-110	-0.0380	-7470A	PPB	18 Oct 2024 12:24:39	U	SMPL	
PB164250BS - 1	LCSW	17438	4.0540	-7470A	PPB	18 Oct 2024 12:26:54	U	SMPL	
P2403-09 - 1	MDL-WATER-03-QT2-2024	317	0.0616	-7470A	PPB	18 Oct 2024 12:32:11	U	SMPL	
P4341-05 - 1	10324-0	5032	1.1611	-7470A	PPB	18 Oct 2024 12:34:27	U	SMPL	
P4405-01 - 1	MH-121	9930	2.3032	-7470A	PPB	18 Oct 2024 12:36:44	U	SMPL	
P4407-01 - 1	MR-CAM-06	-211	-0.0615	-7470A	PPB	18 Oct 2024 12:39:05	U	SMPL	
P4417-10 - 1	HOPPER-A-WATER	-214	-0.0622	-7470A	PPB	18 Oct 2024 12:41:22	U	SMPL	
CCV40 - 1	CCV40	21350	4.9663	-7470A	PPB	18 Oct 2024 12:43:38	U	SMPL	
CCB40 - 1	CCB40	-22	-0.0175	-7470A	PPB	18 Oct 2024 12:45:53	U	SMPL	
P4417-12 - 1	HOPPER-B-WATER	-61	-0.0265	-7470A	PPB	18 Oct 2024 12:48:09	U	SMPL	
P4423-02 - 1	COMP	184	0.0306	-7470A	PPB	18 Oct 2024 12:50:24	U	SMPL	
P4423-02DUP - 1	COMPDUP	188	0.0315	-7470A	PPB	18 Oct 2024 12:52:40	U	SMPL	
P4423-02MS - 1	COMPMS	13272	3.0826	-7470A	PPB	18 Oct 2024 12:54:56	U	SMPL	
P4423-02MSD - 1	COMPMSD	14395	3.3444	-7470A	PPB	18 Oct 2024 12:57:11	U	SMPL	
P2403-07 - 1	OD-MDL-WATER	284	0.0539	-7470A	PPB	18 Oct 2024 13:05:54	U	SMPL	
P2403-07RE - 1	OD-MDL-WATERRE	600	0.1276	-7470A	PPB	18 Oct 2024 13:08:10	U	SMPL	
P4423-02LX5 - 1		-23	-0.0177	-7470A	PPB	18 Oct 2024 13:10:27	U	SMPL	
P4423-02A - 1		16576	3.8530	-7470A	PPB	18 Oct 2024 13:12:44	U	SMPL	
CCV41 - 1	CCV41	21396	4.9770	-7470A	PPB	18 Oct 2024 13:14:59	U	SMPL	
CCB41 - 1	CCB41	-88	-0.0328	-7470A	PPB	18 Oct 2024 13:17:15	U	SMPL	