

Data Path : Z:\pestpcbsrv\HPCHEM1\ECD\_S\Data\PS102424\  
 Data File : PS028043.D  
 Signal(s) : Signal #1: ECD1A.ch Signal #2: ECD2B.ch  
 Acq On : 24 Oct 2024 19:32  
 Operator : AR\AJ  
 Sample : P4397-06MSD  
 Misc :  
 ALS Vial : 12 Sample Multiplier: 1

Instrument :  
 ECD\_S  
 ClientSampleId :  
 WB-301-BOTMSD

Integration File signal 1: autoint1.e  
 Integration File signal 2: autoint2.e  
 Quant Time: Oct 25 02:47:02 2024  
 Quant Method : Z:\pestpcbsrv\HPCHEM1\ECD\_S\Method\PS102324.M  
 Quant Title : 8080.M  
 QLast Update : Wed Oct 23 13:25:49 2024  
 Response via : Initial Calibration  
 Integrator: ChemStation

Volume Inj. : 1 µl  
 Signal #1 Phase : ZB-MR2 Signal #2 Phase: ZB-MR2  
 Signal #1 Info : 30M x 0.32mm x0.5 Signal #2 Info : 30M x 0.32mm x 0.25µm

Compound	RT#1	RT#2	Resp#1	Resp#2	ng/ml	ng/ml
System Monitoring Compounds						
4) S 2,4-DCAA	7.091	7.612	376.4E6	105.5E6	139.563	111.164
Target Compounds						
1) T Dalapon	2.541	2.604	1470.9E6	783.1E6	322.816	459.195 #
2) T 3,5-DICHL...	6.283	6.584	1107.8E6	381.1E6	279.962	284.899
3) T 4-Nitroph...	6.872	7.189f	58408295	7067316	31.565	10.224 #
5) T DICAMBA	7.269	7.805	4448.1E6	1363.8E6	406.710	412.682
6) T MCPP	7.446	7.908	141.9E6	91444977	19.350	35.375 #
7) T MCPA	7.591	8.146	399.4E6	307.9E6	37.666	66.898 #
8) T DICHLORPROP	7.954	8.510	1249.2E6	460.5E6	433.203	491.502
9) T 2,4-D	8.176	8.834	1666.1E6	564.5E6	491.685	566.078
10) T Pentachlo...	8.462	9.346	5264.8E6	1426.2E6	133.043	111.367
11) T 2,4,5-TP ...	9.029	9.730	7670.8E6	5164.9E6	474.948	1131.497 #
12) T 2,4,5-T	9.312	10.137	7628.9E6	2075.6E6	456.643	504.712
13) T 2,4-DB	9.875	10.697	1025.3E6	217.2E6	389.413	425.240
14) T DINOSEB	11.050	11.073	962.5E6	270.8E6	87.443	80.490
15) T Picloram	10.866	12.144	8907.0E6	2232.6E6	400.039	489.957
16) T DCPA	11.350	12.104	10107.5E6	2695.1E6	546.695	580.696

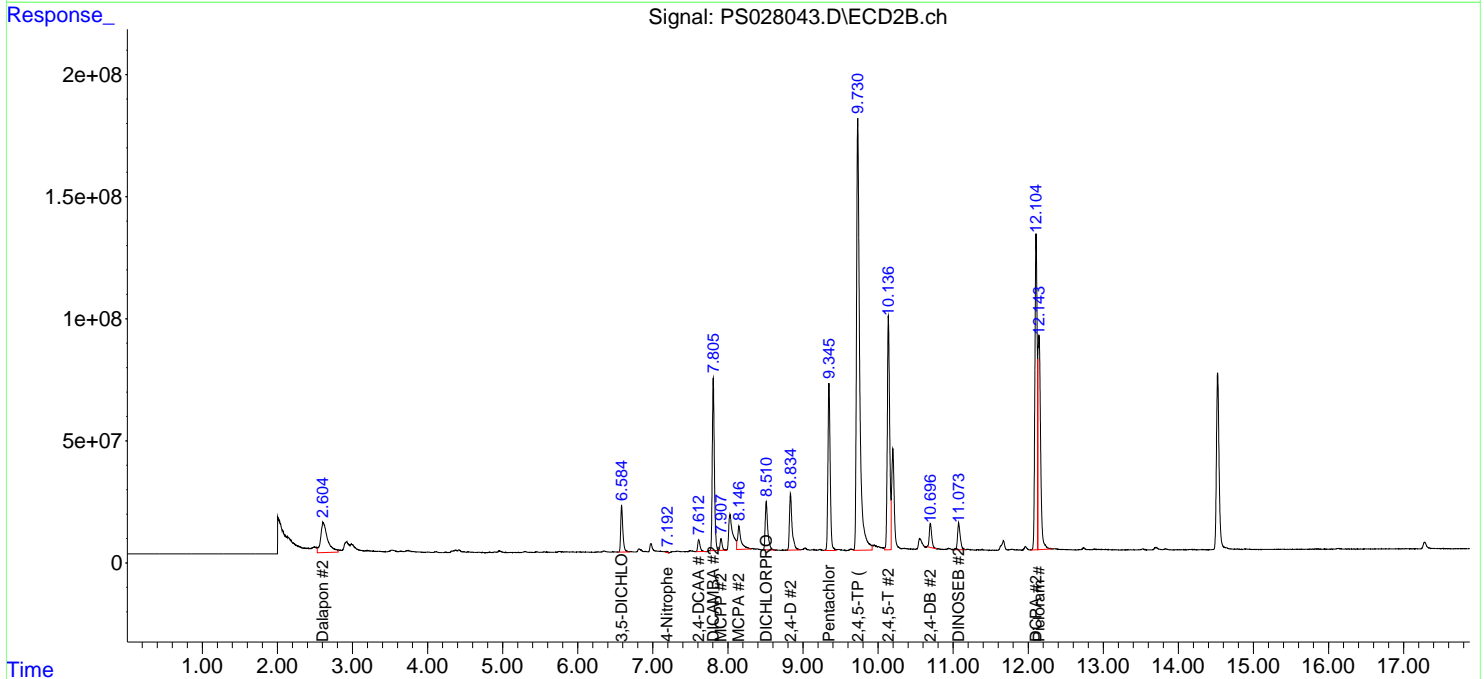
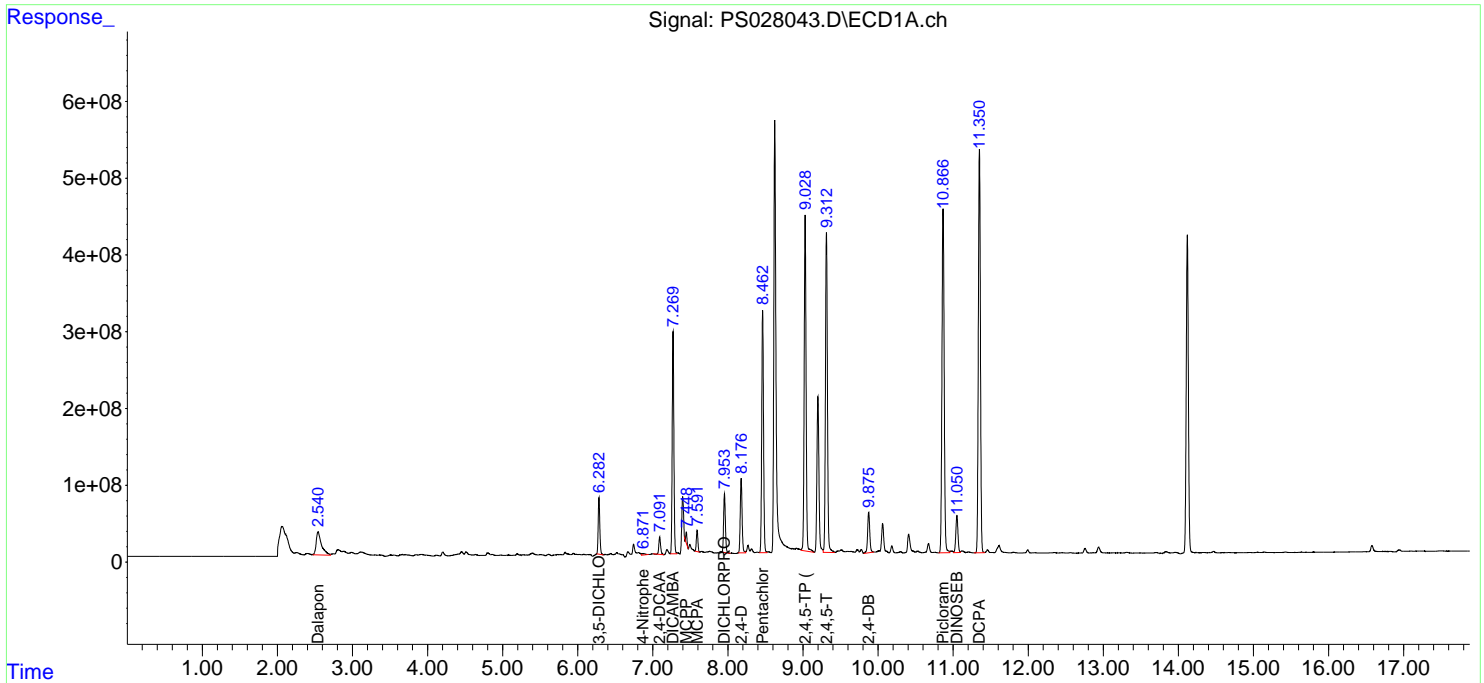
(f)=RT Delta > 1/2 Window (#)=Amounts differ by > 25% (m)=manual int.

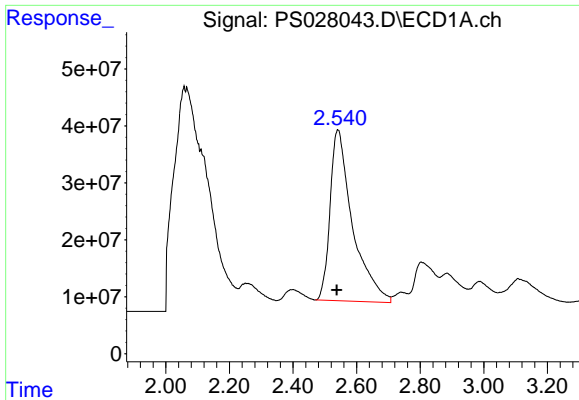
Data Path : Z:\pestpcbsrv\HPCHEM1\ECD\_S\Data\PS102424\  
 Data File : PS028043.D  
 Signal(s) : Signal #1: ECD1A.ch Signal #2: ECD2B.ch  
 Acq On : 24 Oct 2024 19:32  
 Operator : AR\AJ  
 Sample : P4397-06MSD  
 Misc :  
 ALS Vial : 12 Sample Multiplier: 1

Instrument :  
 ECD\_S  
 ClientSampleId :  
 WB-301-BOTMSD

Integration File signal 1: autoint1.e  
 Integration File signal 2: autoint2.e  
 Quant Time: Oct 25 02:47:02 2024  
 Quant Method : Z:\pestpcbsrv\HPCHEM1\ECD\_S\Method\PS102324.M  
 Quant Title : 8080.M  
 QLast Update : Wed Oct 23 13:25:49 2024  
 Response via : Initial Calibration  
 Integrator: ChemStation

Volume Inj. : 1 µl  
 Signal #1 Phase : ZB-MR1 Signal #2 Phase: ZB-MR2  
 Signal #1 Info : 30M x 0.32mm x0.5 Signal #2 Info : 30M x 0.32mm x 0.25µm

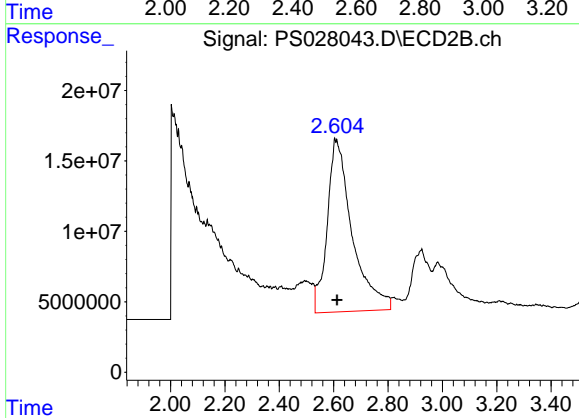




#1 Dalapon

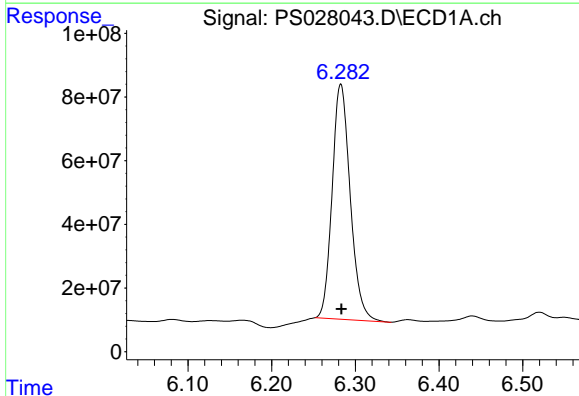
R.T.: 2.541 min  
 Delta R.T.: 0.003 min  
 Response: 1470883647  
 Conc: 322.82 ng/ml

Instrument :  
 ECD\_S  
 ClientSampleId :  
 WB-301-BOTMSD



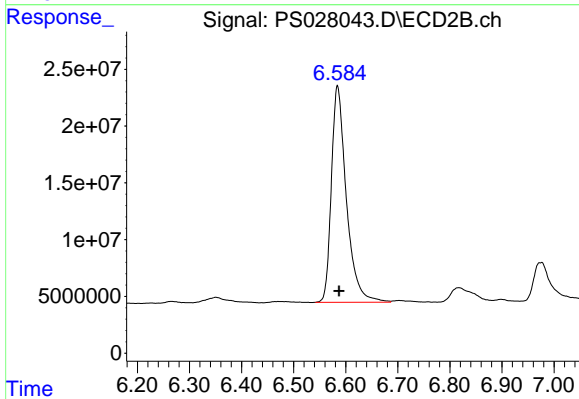
#1 Dalapon

R.T.: 2.604 min  
 Delta R.T.: -0.008 min  
 Response: 783119425  
 Conc: 459.19 ng/ml



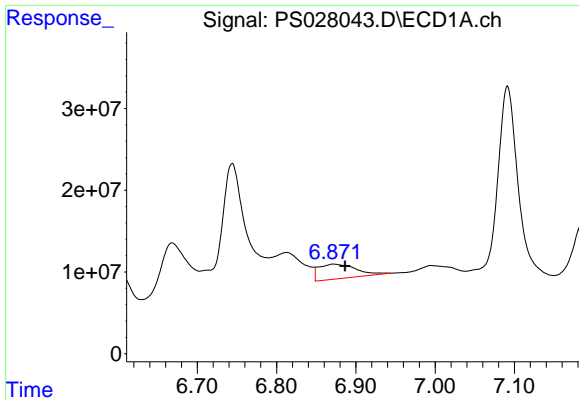
#2 3,5-DICHLOROBENZOIC ACID

R.T.: 6.283 min  
 Delta R.T.: 0.000 min  
 Response: 1107814297  
 Conc: 279.96 ng/ml



#2 3,5-DICHLOROBENZOIC ACID

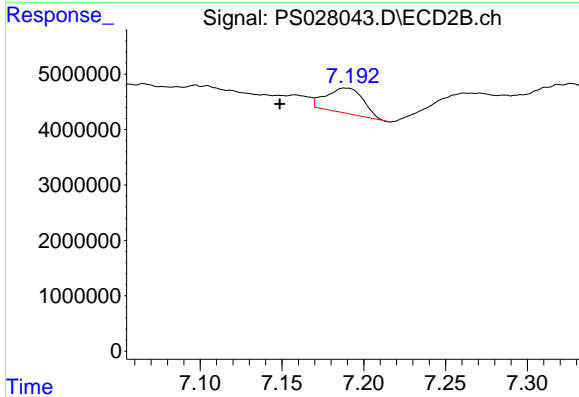
R.T.: 6.584 min  
 Delta R.T.: -0.003 min  
 Response: 381053911  
 Conc: 284.90 ng/ml



#3 4-Nitrophenol

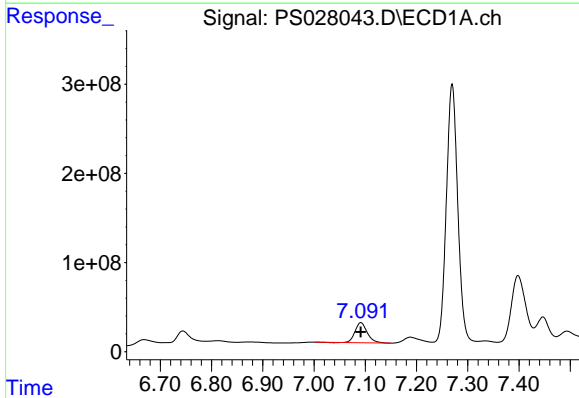
R.T.: 6.872 min  
 Delta R.T.: -0.014 min  
 Response: 58408295  
 Conc: 31.56 ng/ml

Instrument :  
 ECD\_S  
 ClientSampleId :  
 WB-301-BOTMSD



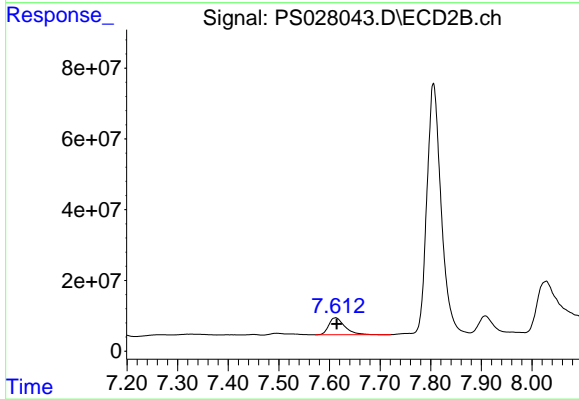
#3 4-Nitrophenol

R.T.: 7.189 min  
 Delta R.T.: 0.040 min  
 Response: 7067316  
 Conc: 10.22 ng/ml



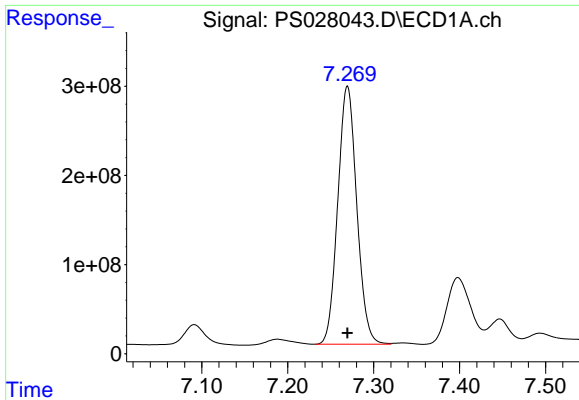
#4 2,4-DCAA

R.T.: 7.091 min  
 Delta R.T.: 0.000 min  
 Response: 376396678  
 Conc: 139.56 ng/ml



#4 2,4-DCAA

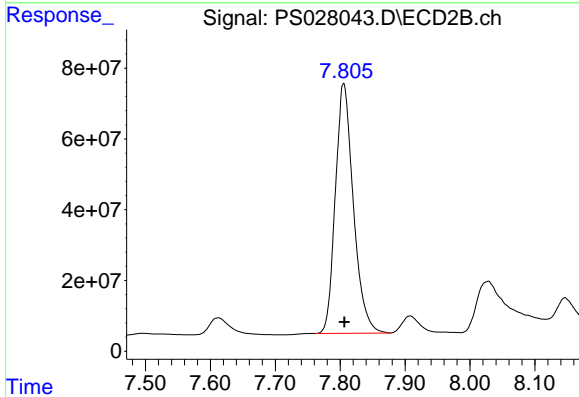
R.T.: 7.612 min  
 Delta R.T.: -0.002 min  
 Response: 105458547  
 Conc: 111.16 ng/ml



#5 DICAMBA

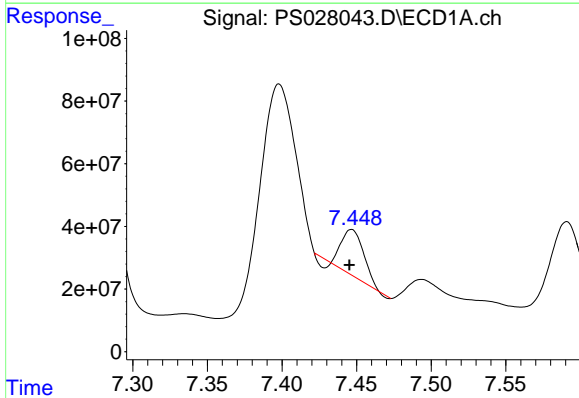
R.T.: 7.269 min  
 Delta R.T.: 0.000 min  
 Response: 4448122153  
 Conc: 406.71 ng/ml

Instrument :  
 ECD\_S  
 ClientSampleId :  
 WB-301-BOTMSD



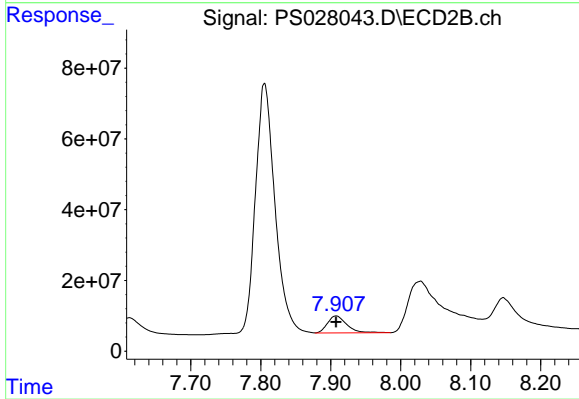
#5 DICAMBA

R.T.: 7.805 min  
 Delta R.T.: -0.001 min  
 Response: 1363779008  
 Conc: 412.68 ng/ml



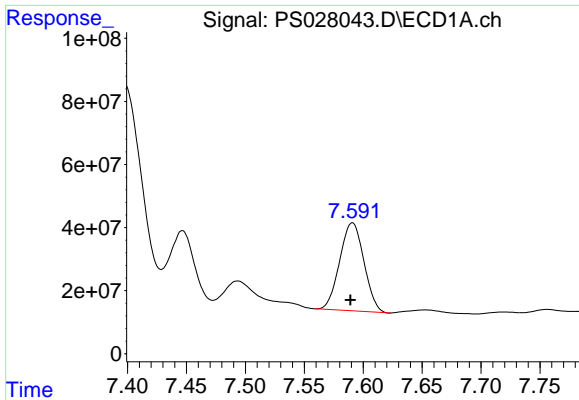
#6 MCP

R.T.: 7.446 min  
 Delta R.T.: 0.001 min  
 Response: 141885495  
 Conc: 19.35 ug/ml



#6 MCP

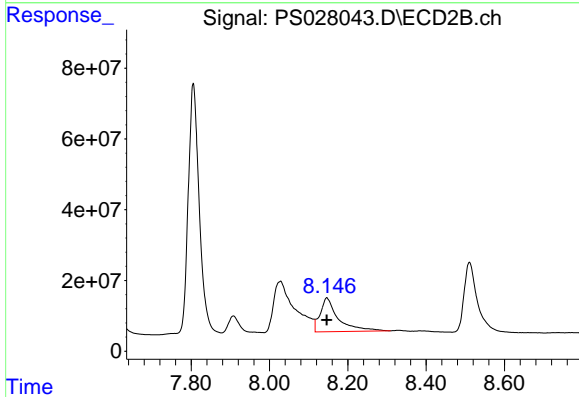
R.T.: 7.908 min  
 Delta R.T.: 0.000 min  
 Response: 91444977  
 Conc: 35.37 ug/ml



#7 MCPA

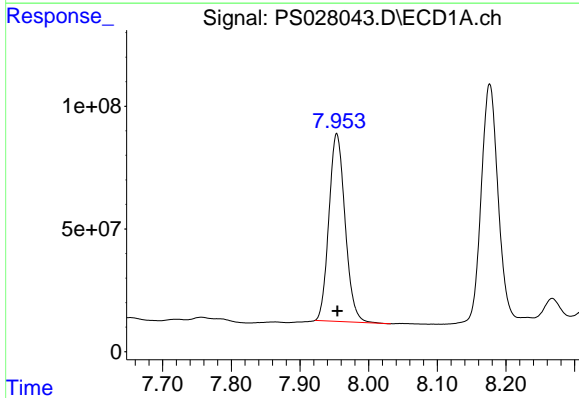
R.T.: 7.591 min  
 Delta R.T.: 0.002 min  
 Response: 399401785  
 Conc: 37.67 ug/ml

Instrument :  
 ECD\_S  
 ClientSampleId :  
 WB-301-BOTMSD



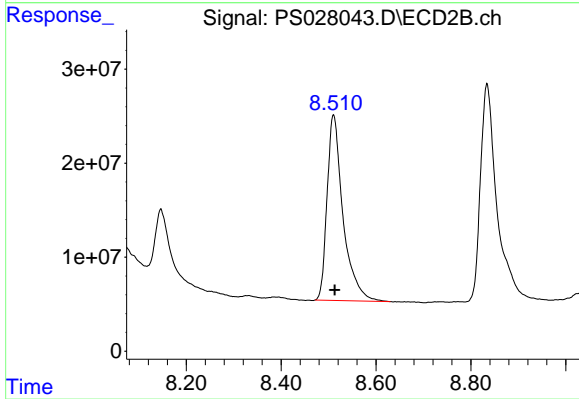
#7 MCPA

R.T.: 8.146 min  
 Delta R.T.: 0.000 min  
 Response: 307859818  
 Conc: 66.90 ug/ml



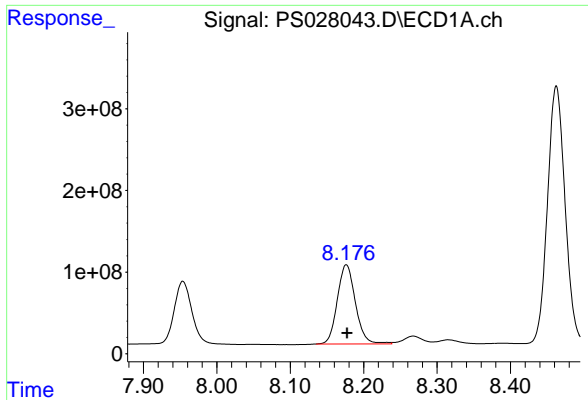
#8 DICHLORPROP

R.T.: 7.954 min  
 Delta R.T.: -0.001 min  
 Response: 1249222319  
 Conc: 433.20 ng/ml



#8 DICHLORPROP

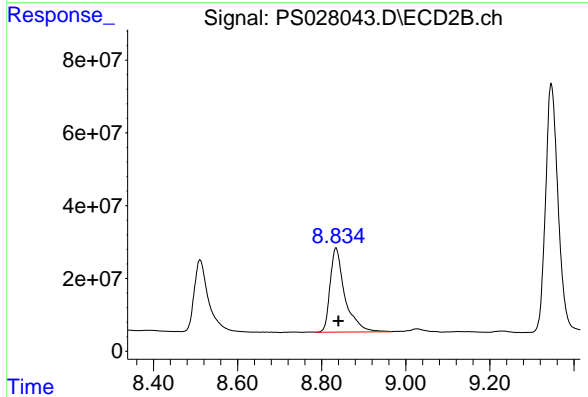
R.T.: 8.510 min  
 Delta R.T.: -0.003 min  
 Response: 460513870  
 Conc: 491.50 ng/ml



#9 2,4-D

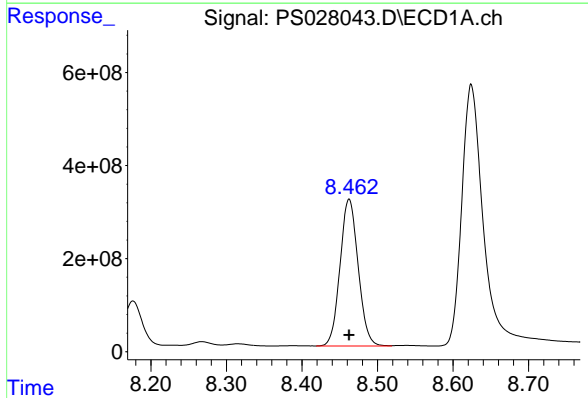
R.T.: 8.176 min  
 Delta R.T.: -0.001 min  
 Response: 1666067666  
 Conc: 491.68 ng/ml

Instrument :  
 ECD\_S  
 ClientSampleId :  
 WB-301-BOTMSD



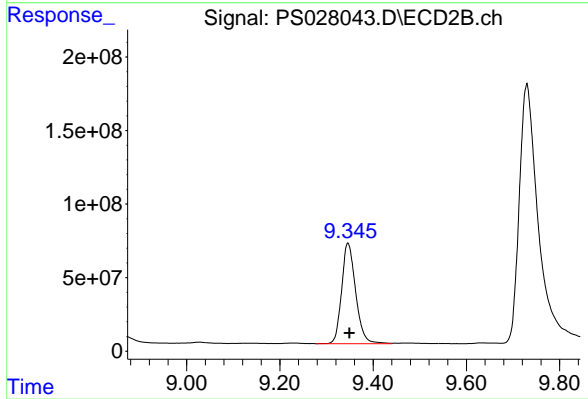
#9 2,4-D

R.T.: 8.834 min  
 Delta R.T.: -0.006 min  
 Response: 564461508  
 Conc: 566.08 ng/ml



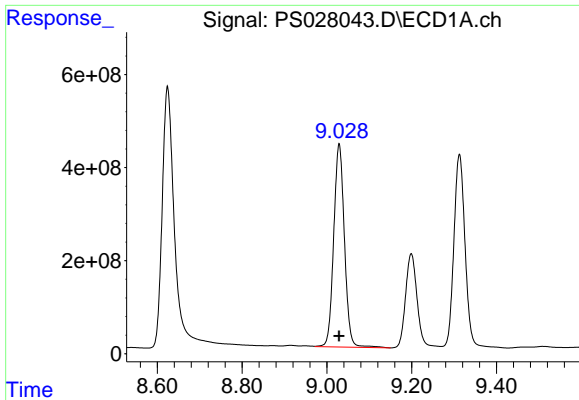
#10 Pentachlorophenol

R.T.: 8.462 min  
 Delta R.T.: 0.000 min  
 Response: 5264771616  
 Conc: 133.04 ng/ml



#10 Pentachlorophenol

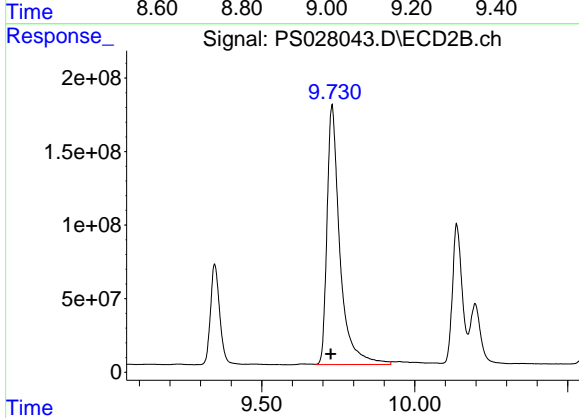
R.T.: 9.346 min  
 Delta R.T.: -0.003 min  
 Response: 1426172918  
 Conc: 111.37 ng/ml



#11 2,4,5-TP (SILVEX)

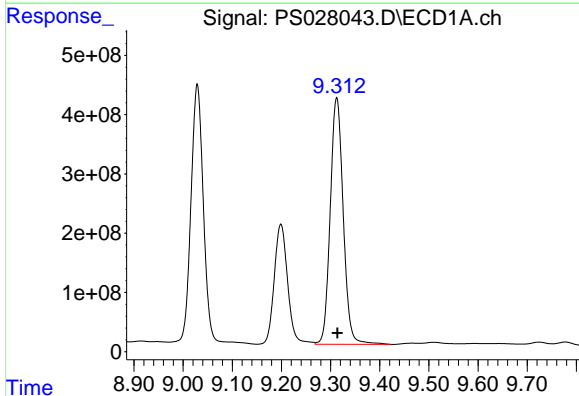
R.T.: 9.029 min  
 Delta R.T.: 0.000 min  
 Response: 7670777325  
 Conc: 474.95 ng/ml

Instrument :  
 ECD\_S  
 ClientSampleId :  
 WB-301-BOTMSD



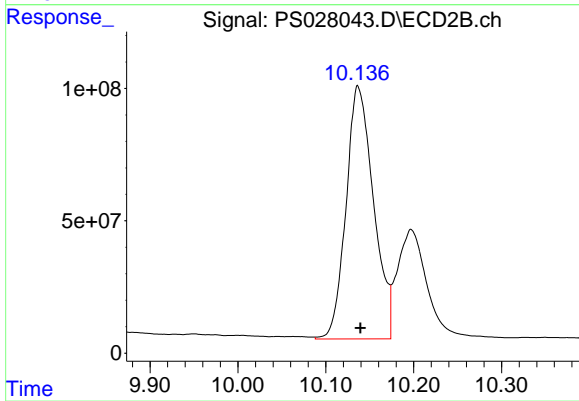
#11 2,4,5-TP (SILVEX)

R.T.: 9.730 min  
 Delta R.T.: 0.005 min  
 Response: 5164867014  
 Conc: 1131.50 ng/ml



#12 2,4,5-T

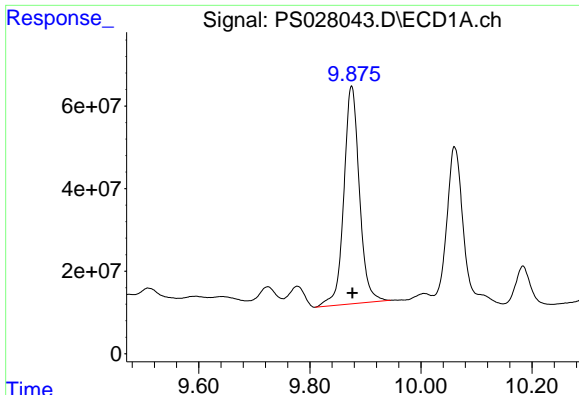
R.T.: 9.312 min  
 Delta R.T.: -0.001 min  
 Response: 7628914760  
 Conc: 456.64 ng/ml



#12 2,4,5-T

R.T.: 10.137 min  
 Delta R.T.: -0.003 min  
 Response: 2075597139  
 Conc: 504.71 ng/ml

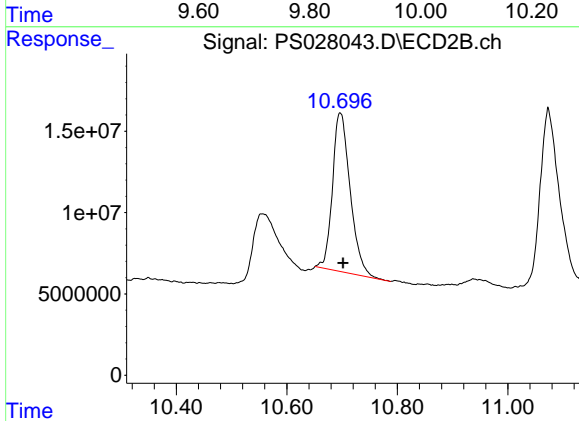




#13 2,4-DB

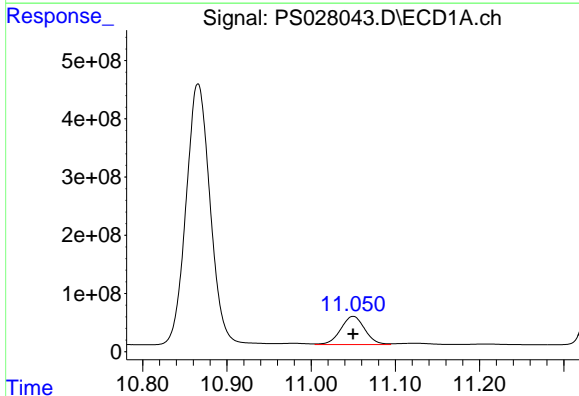
R.T.: 9.875 min  
 Delta R.T.: -0.002 min  
 Response: 1025297552  
 Conc: 389.41 ng/ml

Instrument :  
 ECD\_S  
 ClientSampleId :  
 WB-301-BOTMSD



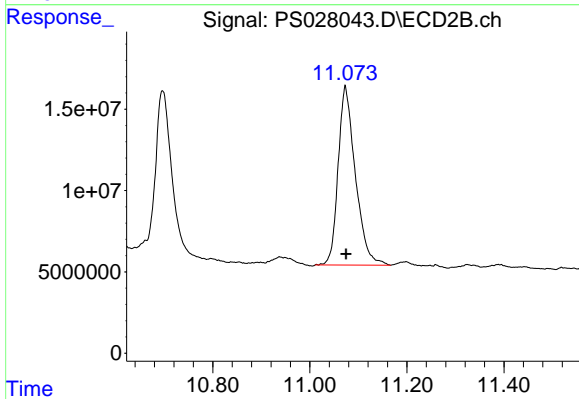
#13 2,4-DB

R.T.: 10.697 min  
 Delta R.T.: -0.005 min  
 Response: 217189182  
 Conc: 425.24 ng/ml



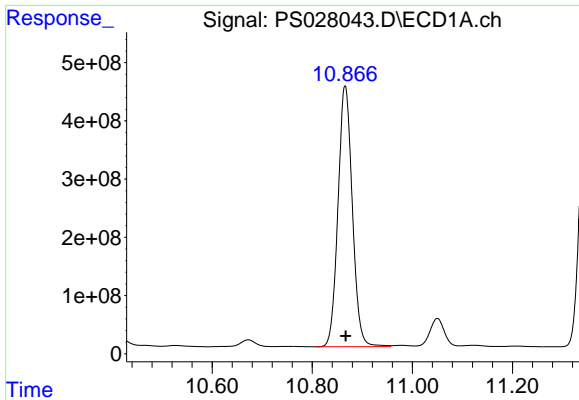
#14 DINOSEB

R.T.: 11.050 min  
 Delta R.T.: 0.000 min  
 Response: 962464370  
 Conc: 87.44 ng/ml



#14 DINOSEB

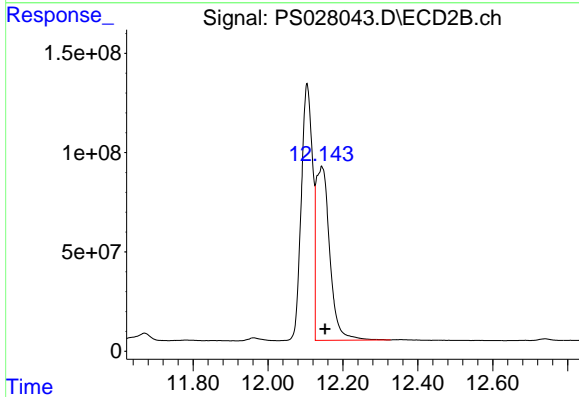
R.T.: 11.073 min  
 Delta R.T.: -0.002 min  
 Response: 270831861  
 Conc: 80.49 ng/ml



#15 Picloram

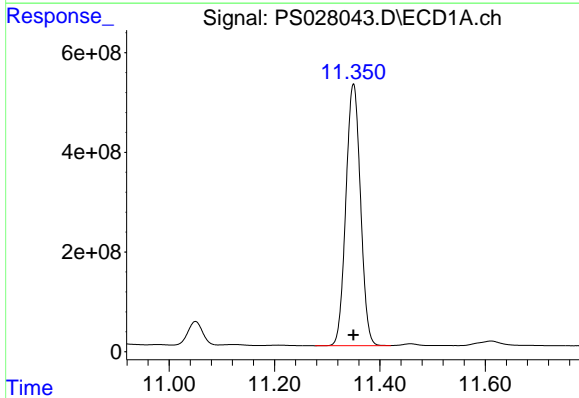
R.T.: 10.866 min  
 Delta R.T.: -0.001 min  
 Response: 8907020297  
 Conc: 400.04 ng/ml

Instrument :  
 ECD\_S  
 ClientSampleId :  
 WB-301-BOTMSD



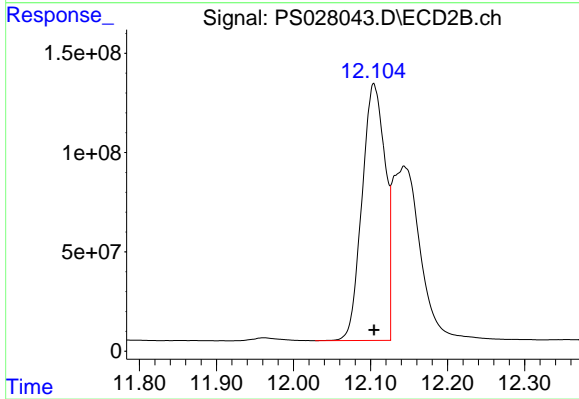
#15 Picloram

R.T.: 12.144 min  
 Delta R.T.: -0.009 min  
 Response: 2232633890  
 Conc: 489.96 ng/ml



#16 DCPA

R.T.: 11.350 min  
 Delta R.T.: 0.000 min  
 Response: 10107519978  
 Conc: 546.69 ng/ml



#16 DCPA

R.T.: 12.104 min  
 Delta R.T.: 0.000 min  
 Response: 2695100462  
 Conc: 580.70 ng/ml