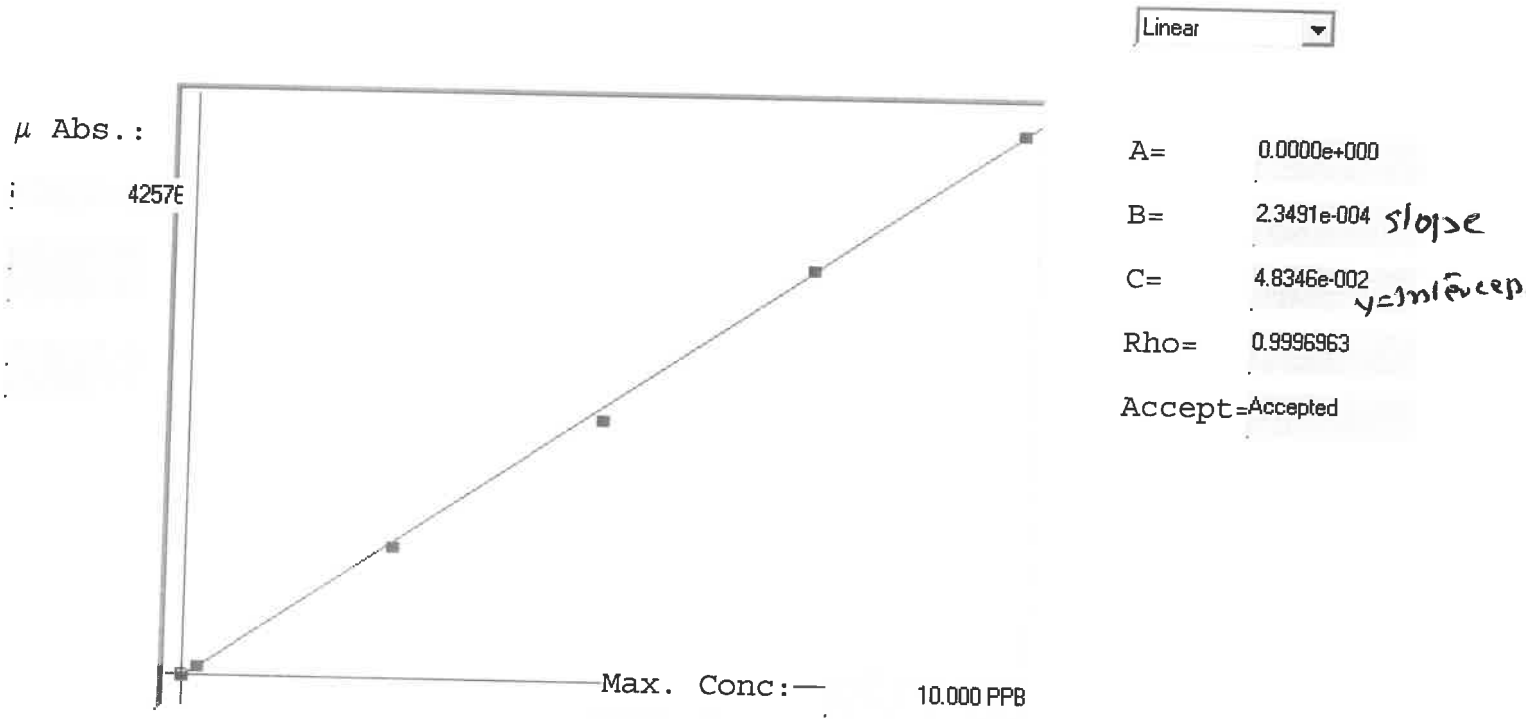


LB133546

SFAM01.1

INSTRUMENT ID: CV1



Std ID	Conc.	Calc.	Dev.	Mean	SD or %RSD	Rep 1	Rep 2	Rep 3	Rep 4	Rep 5	% n
0.00	0.000	0.060	0.060	51	0.000	51					
0.05	0.050					442					
0.20	0.200	0.252	0.052	868	0.0 %	868	0				26
2.50	2.500	2.462	-0.038	10275	0.0 %	10275					-2
5.00	5.000	4.812	-0.188	20279	0.0 %	20279					-4
7.50	7.500	7.563	0.063	31991	0.0 %	31991					1
10.0	10.000	10.050	0.050	42576	0.0 %	42576					1

LB133546

INSTRUMEN ID : CV1

Sample ID	Extended ID	$\mu$ Abs.	Conc.	Std Conc	Method	Units	Date	Type
	0 S0	51	-		0 SFAM01.1	PPB	11/21/2024 10:34	Std
	0.2 S01	868	-		0.2 SFAM01.1	PPB	11/21/2024 10:36	Std
	2.5 S02	10275	-		2.5 SFAM01.1	PPB	11/21/2024 10:39	Std
	5 S03	20279	-		5 SFAM01.1	PPB	11/21/2024 10:41	Std
	7.5 S04	31991	-		7.5 SFAM01.1	PPB	11/21/2024 10:46	Std
	10 S05	42576	-		10 SFAM01.1	PPB	11/21/2024 10:48	Std
ICV094	ICV094	15939	3.7926 -		SFAM01.1	PPB	11/21/2024 10:59	SMPL
ICB094	ICB094	-25	0.0425 -		SFAM01.1	PPB	11/21/2024 11:01	SMPL
CCV021	CCV021	19566	4.6446 -		SFAM01.1	PPB	11/21/2024 11:03	SMPL
CCB021	CCB021	-61	0.034 -		SFAM01.1	PPB	11/21/2024 11:05	SMPL
PB165162BL	PBS162	30	0.0554 -		SFAM01.1	PPB	11/21/2024 11:08	SMPL
P4654-01	MCOVG5	4338	1.0674 -		SFAM01.1	PPB	11/21/2024 11:10	SMPL
P4654-02	MCOVH9	3733	0.9253 -		SFAM01.1	PPB	11/21/2024 11:12	SMPL
P4654-03	MCOVJ3	1925	0.5005 -		SFAM01.1	PPB	11/21/2024 11:15	SMPL
P4654-04	MCOVJ4	2863	0.7209 -		SFAM01.1	PPB	11/21/2024 11:17	SMPL
P4654-05	MCOVJ5	3611	0.8966 -		SFAM01.1	PPB	11/21/2024 11:19	SMPL
P4654-06	MCOVJ6	11252	2.6916 -		SFAM01.1	PPB	11/21/2024 11:21	SMPL
P4654-07	MCOVJ7	2065	0.5334 -		SFAM01.1	PPB	11/21/2024 11:24	SMPL
P4654-08	MCOVJ8	4013	0.991 -		SFAM01.1	PPB	11/21/2024 11:26	SMPL
P4654-09	MCOVJ9	3070	0.7695 -		SFAM01.1	PPB	11/21/2024 11:28	SMPL
P4654-10	MCOVK0	3224	0.8057 -		SFAM01.1	PPB	11/21/2024 11:30	SMPL
P4654-11	MCOVK0D	3420	0.8517 -		SFAM01.1	PPB	11/21/2024 11:33	SMPL
P4654-12	MCOVK0S	11548	2.7611 -		SFAM01.1	PPB	11/21/2024 11:37	SMPL
P4654-13	MCOVK1	5413	1.3199 -		SFAM01.1	PPB	11/21/2024 11:40	SMPL
P4654-14	MCOVK2	2898	0.7291 -		SFAM01.1	PPB	11/21/2024 11:42	SMPL
P4654-15	MCOVK3	4917	1.2034 -		SFAM01.1	PPB	11/21/2024 11:44	SMPL
P4654-16	MCOVK4	5803	1.4115 -		SFAM01.1	PPB	11/21/2024 11:47	SMPL
P4654-17	MCOVK5	3293	0.8219 -		SFAM01.1	PPB	11/21/2024 11:49	SMPL
P4654-18	MCOVK6	2406	0.6135 -		SFAM01.1	PPB	11/21/2024 11:51	SMPL
P4654-19	MCOVK7	2428	0.6187 -		SFAM01.1	PPB	11/21/2024 11:53	SMPL
CCV022	CCV022	19931	4.7303 -		SFAM01.1	PPB	11/21/2024 11:56	SMPL
CCB022	CCB022	-116	0.0211 -		SFAM01.1	PPB	11/21/2024 11:58	SMPL
P4654-20	MCOVK8	10174	2.4383 -		SFAM01.1	PPB	11/21/2024 12:00	SMPL
P4654-21	MCOVK9	3324	0.8292 -		SFAM01.1	PPB	11/21/2024 12:03	SMPL
PB165163BL	PBS163	-88	0.0277 -		SFAM01.1	PPB	11/21/2024 12:08	SMPL
P4656-01	MCOVH4	3183	0.7961 -		SFAM01.1	PPB	11/21/2024 12:10	SMPL
P4656-02	MCOVJ0	6618	1.603 -		SFAM01.1	PPB	11/21/2024 12:12	SMPL
P4656-03	MCOVM0	2792	0.7042 -		SFAM01.1	PPB	11/21/2024 12:14	SMPL
P4656-04	MCOVM0D	2676	0.677 -		SFAM01.1	PPB	11/21/2024 12:17	SMPL
P4656-05	MCOVM0S	12639	3.0174 -		SFAM01.1	PPB	11/21/2024 12:19	SMPL
P4656-06	MCOVM6	834	0.2443 -		SFAM01.1	PPB	11/21/2024 12:21	SMPL
P4656-07	MCOVM7	8696	2.0911 -		SFAM01.1	PPB	11/21/2024 12:24	SMPL
P4688-01	MCOVL1	2395	0.611 -		SFAM01.1	PPB	11/21/2024 12:26	SMPL
P4688-02	MCOVL2	1668	0.4402 -		SFAM01.1	PPB	11/21/2024 12:28	SMPL
P4688-03	MCOVL3	2387	0.6091 -		SFAM01.1	PPB	11/21/2024 12:30	SMPL
P4688-04	MCOVL4	2097	0.541 -		SFAM01.1	PPB	11/21/2024 12:33	SMPL

LB133546

INSTRUMEN ID : CV1

P4688-05	MCOVL5	6336	1.5367 -	SFAM01.1	PPB	11/21/2024 12:35	SMPL
P4688-06	MCOVL6	2828	0.7127 -	SFAM01.1	PPB	11/21/2024 12:37	SMPL
P4688-07	MCOVL7	11994	2.8659 -	SFAM01.1	PPB	11/21/2024 12:39	SMPL
P4688-08	MCOVL8	3823	0.9464 -	SFAM01.1	PPB	11/21/2024 12:42	SMPL
P4688-09	MCOVL9	3085	0.773 -	SFAM01.1	PPB	11/21/2024 12:44	SMPL
P4688-10	MCOVM0	3053	0.7655 -	SFAM01.1	PPB	11/21/2024 12:46	SMPL
CCV023	CCV023	19565	4.6444 -	SFAM01.1	PPB	11/21/2024 12:49	SMPL
CCB023	CCB023	-241	-0.0083 -	SFAM01.1	PPB	11/21/2024 12:51	SMPL
P4688-11	MCOVM0D	2797	0.7054 -	SFAM01.1	PPB	11/21/2024 12:56	SMPL
P4688-12	MCOVM0S	11525	2.7557 -	SFAM01.1	PPB	11/21/2024 13:03	SMPL
P4688-13	MCOVM1	1668	0.4402 -	SFAM01.1	PPB	11/21/2024 13:06	SMPL
P4688-14	MCOVM2	3619	0.8985 -	SFAM01.1	PPB	11/21/2024 13:08	SMPL
P4688-15	MCOVM3	31692	7.4931 -	SFAM01.1	PPB	11/21/2024 13:10	SMPL
P4688-16	MCOVM4	4917	1.2034 -	SFAM01.1	PPB	11/21/2024 13:12	SMPL
P4688-17	MCOVM5	1720	0.4524 -	SFAM01.1	PPB	11/21/2024 13:15	SMPL
CCV024	CCV024	19282	4.5779 -	SFAM01.1	PPB	11/21/2024 13:17	SMPL
CCB024	CCB024	-134	0.0169 -	SFAM01.1	PPB	11/21/2024 13:19	SMPL