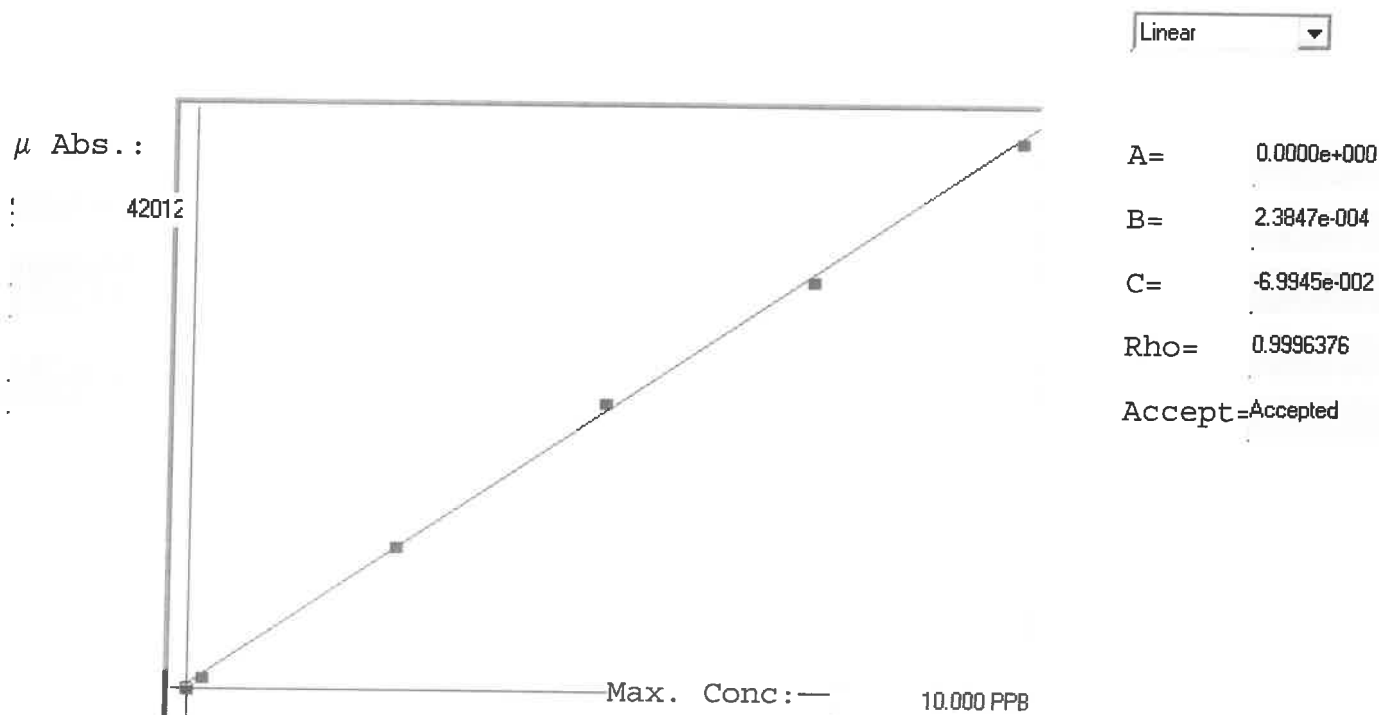


LB133424

7471B

INSTRUMENT ID: CY1



Std ID	Conc.	Calc.	Dev.	Mean	SD or %RSD	Rep 1	Rep 2	Rep 3	Rep 4	Rep 5	%D
0.0	0.000	-0.078	-0.078	-32	0.000	-32					-
0.2	0.200	0.162	-0.038	972	0.0 %	972					-19
2.5	2.500	2.561	0.061	11034	0.0 %	11034					2
5.0	5.000	5.194	0.194	22073	0.0 %	22073					4
7.5	7.500	7.412	-0.088	31374	0.0 %	31374					-1
10.0	10.000	9.949	-0.051	42012	0.0 %	42012					-1

LB133424 INSTRUMENT ID : CV1

Method: 7471B

Operator: Admin

Date of Analysis: 13 Nov 2024 11:34:08

Sample ID	Extended ID	μ Abs.	Conc.	Std Conc	Method	Units	Date	Type	Type
0.0 - 1	50	-32	-	0.0000	7471B	PPB	13 Nov 2024 11:53:11	S	Std
0.2 - 1	50.2	972	-	0.2000	7471B	PPB	13 Nov 2024 11:55:28	S	Std
2.5 - 1	52.15	11034	-	2.5000	7471B	PPB	13 Nov 2024 11:57:45	S	Std
5.0 - 1	55	22073	-	5.0000	7471B	PPB	13 Nov 2024 12:00:02	S	Std
7.5 - 1	57.5	31374	-	7.5000	7471B	PPB	13 Nov 2024 12:02:20	S	Std
10.0 - 1	510	42012	-	10.0000	7471B	PPB	13 Nov 2024 12:11:14	S	Std
ICV84 - 1	ICV84	16280	3.8124	-	7471B	PPB	13 Nov 2024 12:14:01	U	SMPL
ICB84 - 1	ICB84	177	-0.0277	-	7471B	PPB	13 Nov 2024 12:18:50	U	SMPL
CCV79 - 1	CCV79	20777	4.8848	-	7471B	PPB	13 Nov 2024 12:21:04	U	SMPL
CCB79 - 1	CCB79	-51	-0.0821	-	7471B	PPB	13 Nov 2024 12:23:19	U	SMPL
CRA - 1	CRA	1142	0.2024	-	7471B	PPB	13 Nov 2024 12:30:40	U	SMPL
HighStd - 1	HighStd	39793	9.4195	-	7471B	PPB	13 Nov 2024 12:32:55	U	SMPL
ChkStd - 1	ChkStd	26337	6.2107	-	7471B	PPB	13 Nov 2024 12:35:09	U	SMPL
PB164947BL - 1	PBS	59	-0.0559	-	7471B	PPB	13 Nov 2024 12:40:12	U	SMPL
PB164947BS - 1	LCCCCCSS	15004	3.5081	-	7471B	PPB	13 Nov 2024 12:42:27	U	SMPL
P4807-01 - 1	TP-7	332	0.0092	-	7471B	PPB	13 Nov 2024 12:44:43	U	SMPL
P4807-01DUP - 1	TP-7DUP	392	0.0235	-	7471B	PPB	13 Nov 2024 12:47:02	U	SMPL
P4807-01MS - 1	TP-7MS	15251	3.5670	-	7471B	PPB	13 Nov 2024 12:49:21	U	SMPL
P4807-01MSD - 1	TP-7MSD	15621	3.6552	-	7471B	PPB	13 Nov 2024 12:51:39	U	SMPL
P4807-05 - 1	BF-F14	-212	-0.1205	-	7471B	PPB	13 Nov 2024 12:53:58	U	SMPL
CCV80 - 1	CCV80	19534	4.5884	-	7471B	PPB	13 Nov 2024 12:58:48	U	SMPL
CCB80 - 1	CCB80	-54	-0.0828	-	7471B	PPB	13 Nov 2024 13:01:05	U	SMPL
P4807-09 - 1	BF-F13	67	-0.0540	-	7471B	PPB	13 Nov 2024 13:03:24	U	SMPL
P4807-13 - 1	TP-6	239	-0.0130	-	7471B	PPB	13 Nov 2024 13:05:40	U	SMPL
P4809-01 - 1	MH-5	4912	1.1014	-	7471B	PPB	13 Nov 2024 13:07:55	U	SMPL
P4811-01 - 1	RB24008	2177	0.4492	-	7471B	PPB	13 Nov 2024 13:10:10	U	SMPL
P4812-01 - 1	RBR200035	63	-0.0549	-	7471B	PPB	13 Nov 2024 13:12:29	U	SMPL
P4816-01 - 1	331	2782	0.5935	-	7471B	PPB	13 Nov 2024 13:14:46	U	SMPL
P4821-01 - 1	BP-F-24	149	-0.0344	-	7471B	PPB	13 Nov 2024 13:17:03	U	SMPL
P4821-05 - 1	BP-F-2	195	-0.0234	-	7471B	PPB	13 Nov 2024 13:19:22	U	SMPL
P4822-02 - 1	SOIL-1	3104	0.6703	-	7471B	PPB	13 Nov 2024 13:21:38	U	SMPL
P4822-04 - 1	SOIL-2	3835	0.8446	-	7471B	PPB	13 Nov 2024 13:23:53	U	SMPL
CCV81 - 1	CCV81	20546	4.8297	-	7471B	PPB	13 Nov 2024 13:34:05	U	SMPL
CCB81 - 1	CCB81	101	-0.0459	-	7471B	PPB	13 Nov 2024 13:39:20	U	SMPL
P4822-06 - 1	SOIL-3	4431	0.9867	-	7471B	PPB	13 Nov 2024 13:41:36	U	SMPL
P4822-08 - 1	SOIL-4	4310	0.9579	-	7471B	PPB	13 Nov 2024 13:43:51	U	SMPL
P4822-10 - 1	SOIL-5	2011	0.4096	-	7471B	PPB	13 Nov 2024 13:46:08	U	SMPL
P4822-12 - 1	SOIL-6	2286	0.4752	-	7471B	PPB	13 Nov 2024 13:48:26	U	SMPL
P4823-01 - 1	MH-4	2635	0.5584	-	7471B	PPB	13 Nov 2024 13:50:43	U	SMPL
P4807-01LX5 - 1		-124	-0.0995	-	7471B	PPB	13 Nov 2024 13:53:00	U	SMPL
P4807-01A - 1		12339	2.8726	-	7471B	PPB	13 Nov 2024 14:00:45	U	SMPL
CCV82 - 1	CCV82	20506	4.8201	-	7471B	PPB	13 Nov 2024 14:05:44	U	SMPL
CCB82 - 1	CCB82	-65	-0.0854	-	7471B	PPB	13 Nov 2024 14:08:02	U	SMPL