

Data Path : Z:\pestpcbsrv\HPCHEM1\FID_B\Data\FB111524\
 Data File : FB031219.D
 Signal(s) : FID2B.CH
 Acq On : 15 Nov 2024 17:22
 Operator : YP/AJ
 Sample : P4839-09 500X
 Misc : 7.42G/5.00 ML MEOH
 ALS Vial : 16 Sample Multiplier: 1

Instrument :
 FID_B
 ClientSampleId :
 EX-9-TPH-17

Integration File: Calibration.e
 Quant Time: Nov 18 02:30:56 2024
 Quant Method : Z:\pestpcbsrv\HPCHEM1\FID_B\Method\FB102824.M
 Quant Title :
 QLast Update : Mon Oct 28 12:19:57 2024
 Response via : Initial Calibration
 Integrator: ChemStation

Volume Inj. : 5 g/ml
 Signal Phase : RTX-502.2
 Signal Info : 60mx0.53mmx3.00um

Compound	R.T.	Response	Conc Units

System Monitoring Compounds			
5) s AAA-TFT	8.809	1156441	41.896 ng/ml
Target Compounds			

(f)=RT Delta > 1/2 Window

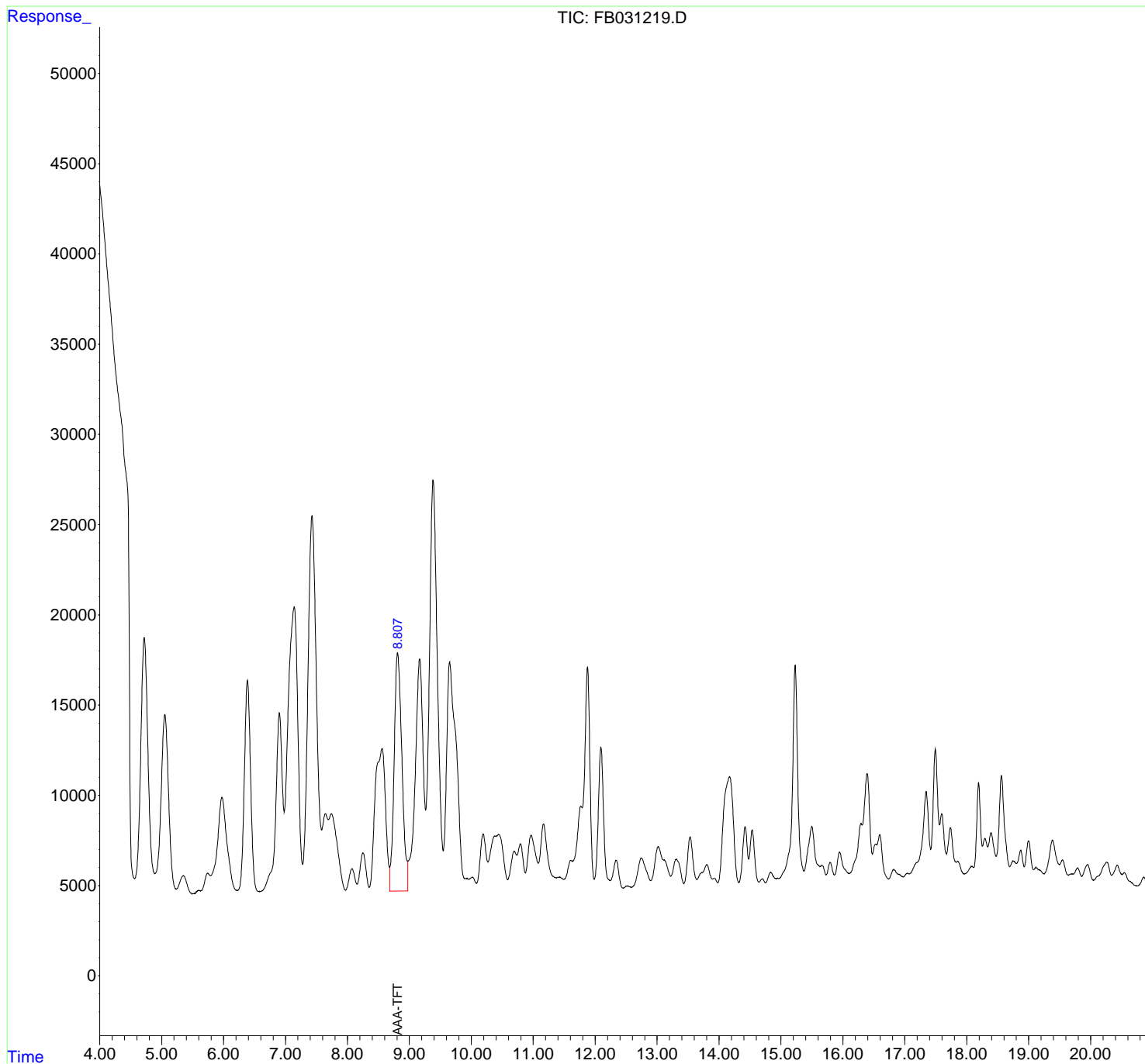
(m)=manual int.

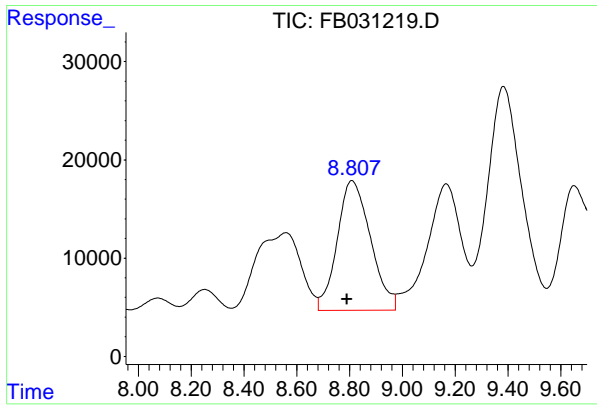
Data Path : Z:\pestpcbsrv\HPCHEM1\FID_B\Data\FB111524\
 Data File : FB031219.D
 Signal(s) : FID2B.CH
 Acq On : 15 Nov 2024 17:22
 Operator : YP/AJ
 Sample : P4839-09 500X
 Misc : 7.42G/5.00 ML MEOH
 ALS Vial : 16 Sample Multiplier: 1

Instrument :
 FID_B
 ClientSampleId :
 EX-9-TPH-17

Integration File: Calibration.e
 Quant Time: Nov 18 02:30:56 2024
 Quant Method : Z:\pestpcbsrv\HPCHEM1\FID_B\Method\FB102824.M
 Quant Title :
 QLast Update : Mon Oct 28 12:19:57 2024
 Response via : Initial Calibration
 Integrator: ChemStation

Volume Inj. : 5 g/ml
 Signal Phase : RTX-502.2
 Signal Info : 60mx0.53mmx3.00um





#5 AAA-TFT

R.T.: 8.809 min
Delta R.T.: 0.019 min
Response: 1156441
Conc: 41.90 ng/ml

Instrument : FID_B
ClientSampleId : EX-9-TPH-17