

Test results

Aquakem 7.2AQ1

Page:

CHEMTECH CONSULTING GROUP INC  
284 Sheffield Street, Mountainside, NJ 07092

12/13/2024 16:22

Reviewed by : NF Instrument ID : Konelab

Test: CNEPA-NEW

| Sample Id         | Result  | Dil. 1 + | Response | Errors |
|-------------------|---------|----------|----------|--------|
| ICV001 ICV001     | 96.037  | 0.0      | 0.089    |        |
| ICB001 ICB001     | -1.141  | 0.0      | 0.001    |        |
| CCV001 CCV001     | 243.185 | 0.0      | 0.221    |        |
| CCB001 CCB001     | -1.223  | 0.0      | 0.001    |        |
| PB165608BL PBS608 | -1.224  | 0.0      | 0.001    |        |
| P5156-01 ME28Q6   | 0.463   | 0.0      | 0.002    |        |
| P5156-02 ME28Q7   | -0.410  | 0.0      | 0.002    |        |
| P5156-03 ME28Q8   | -1.167  | 0.0      | 0.001    |        |
| P5156-04 ME28Q9   | 0.236   | 0.0      | 0.002    |        |
| P5156-05 ME28R0   | 1.027   | 0.0      | 0.003    |        |
| P5156-06 ME28R1   | -1.050  | 0.0      | 0.001    |        |
| P5156-07 ME28R2   | 8.034   | 0.0      | 0.009    |        |
| P5156-08 ME28T4   | 15.327  | 0.0      | 0.016    |        |
| P5156-09 ME28T5   | 20.362  | 0.0      | 0.020    |        |
| P5156-10 ME28T6   | 19.485  | 0.0      | 0.020    |        |
| P5156-11 ME28T7   | 6.350   | 0.0      | 0.008    |        |
| P5156-12 ME28T8   | 6.423   | 0.0      | 0.008    |        |
| P5156-13 ME28T9   | 39.077  | 0.0      | 0.037    |        |
| P5156-14 ME28W0   | 93.854  | 0.0      | 0.087    |        |
| P5156-15 ME28W1   | 86.809  | 0.0      | 0.080    |        |
| P5156-16 ME28W2   | 75.512  | 0.0      | 0.070    |        |
| P5156-17 ME28W2D  | 75.000  | 0.0      | 0.070    |        |
| P5156-18 ME28W2S  | 166.744 | 0.0      | 0.152    |        |
| P5156-19 ME28W3   | 14.902  | 0.0      | 0.015    |        |
| P5156-20 ME28W4   | 7.462   | 0.0      | 0.009    |        |
| P5156-21 ME28W5   | 38.243  | 0.0      | 0.036    |        |
| P5156-22 ME28W6   | 33.790  | 0.0      | 0.032    |        |
| CCV002 CCV002     | 242.839 | 0.0      | 0.221    |        |
| CCB002 CCB002     | -0.941  | 0.0      | 0.001    |        |
| PB165609BL PBS609 | -1.068  | 0.0      | 0.001    |        |
| P5233-01 ME28R5   | 9.227   | 0.0      | 0.010    |        |
| P5233-02 ME28R6   | 9.994   | 0.0      | 0.011    |        |
| P5233-03 ME28R7   | 1.394   | 0.0      | 0.003    |        |
| P5233-04 ME28R8   | 4.503   | 0.0      | 0.006    |        |
| P5233-05 ME28R9   | 0.463   | 0.0      | 0.002    |        |
| P5233-06 ME28S0   | 2.062   | 0.0      | 0.004    |        |
| P5233-07 ME28S1   | -0.987  | 0.0      | 0.001    |        |
| P5233-08 ME28S2   | 7.974   | 0.0      | 0.009    |        |
| P5233-09 ME28S3   | 0.170   | 0.0      | 0.002    |        |
| P5233-10 ME28S4   | -1.080  | 0.0      | 0.001    |        |
| P5233-11 ME28S5   | 0.379   | 0.0      | 0.002    |        |
| P5233-12 ME28S6   | 0.810   | 0.0      | 0.003    |        |
| P5233-13 ME28S7   | 1.346   | 0.0      | 0.003    |        |
| P5233-14 ME28S8   | 3.468   | 0.0      | 0.005    |        |
| P5233-15 ME28S9   | 4.435   | 0.0      | 0.006    |        |
| P5233-16 ME28T0   | 14.365  | 0.0      | 0.015    |        |
| P5233-17 ME28T1   | 104.673 | 0.0      | 0.096    |        |
| P5233-18 ME28T2   | -0.329  | 0.0      | 0.002    |        |
| P5233-19 ME28T3   | 29.975  | 0.0      | 0.029    |        |
| P5233-20 ME28S7D  | 1.372   | 0.0      | 0.003    |        |
| P5233-21ME28S7S   | 95.685  | 0.0      | 0.088    |        |
| CCV003 CCV003     | 244.388 | 0.0      | 0.222    |        |
| CCB003 CCB003     | -0.957  | 0.0      | 0.001    |        |

NF

12.13.2024

NF

P

12.13.2024

Test results

Aquakem 7.2AQ1

Page:

2

CHEMTECH CONSULTING GROUP INC  
284 Sheffield Street, Mountainside, NJ 07092

12/13/2024 16:22

Reviewed by : NF

Instrument ID : Konelab

Test: CNEPA-NEW

| Sample Id | Result | Dil. 1 + Response | Ô□,, |
|-----------|--------|-------------------|------|
|-----------|--------|-------------------|------|

|      |         |  |  |
|------|---------|--|--|
| N    | 53      |  |  |
| Mean | 34.269  |  |  |
| SD   | 63.1569 |  |  |
| CV%  | 184.30  |  |  |

Aquakem v. 7.2AQ1

Results from time period:

Fri Dec 13 12:43:18 2024

Fri Dec 13 16:17:46 2024

| Sample Id         | Sam/Ctr/c | Test short name | Test ty | Result   | Result unit | Result date and time |
|-------------------|-----------|-----------------|---------|----------|-------------|----------------------|
| S0.0              | A         | CNEPA-NEW       | P       | -0.6432  | µg/l        | 12/13/2024 13:00:41  |
| S5.0              | A         | CNEPA-NEW       | P       | 3.5521   | µg/l        | 12/13/2024 13:00:42  |
| S10.0             | A         | CNEPA-NEW       | P       | 8.4432   | µg/l        | 12/13/2024 13:00:43  |
| S100.0            | A         | CNEPA-NEW       | P       | 102.6429 | µg/l        | 12/13/2024 13:00:44  |
| S250.0            | A         | CNEPA-NEW       | P       | 252.9759 | µg/l        | 12/13/2024 13:00:45  |
| S500.0            | A         | CNEPA-NEW       | P       | 498.0291 | µg/l        | 12/13/2024 13:00:46  |
| ICV001 ICV001     | S         | CNEPA-NEW       | P       | 96.037   | µg/l        | 12/13/2024 15:18:24  |
| ICB001 ICB001     | S         | CNEPA-NEW       | P       | -1.1406  | µg/l        | 12/13/2024 15:18:27  |
| CCV001 CCV001     | S         | CNEPA-NEW       | P       | 243.185  | µg/l        | 12/13/2024 15:18:28  |
| CCB001 CCB001     | S         | CNEPA-NEW       | P       | -1.2234  | µg/l        | 12/13/2024 15:18:30  |
| PB165608BL PBS608 | S         | CNEPA-NEW       | P       | -1.2239  | µg/l        | 12/13/2024 15:18:32  |
| P5156-01 ME28Q6   | S         | CNEPA-NEW       | P       | 0.4629   | µg/l        | 12/13/2024 15:18:34  |
| P5156-02 ME28Q7   | S         | CNEPA-NEW       | P       | -0.4101  | µg/l        | 12/13/2024 15:25:59  |
| P5156-03 ME28Q8   | S         | CNEPA-NEW       | P       | -1.1673  | µg/l        | 12/13/2024 15:26:00  |
| P5156-04 ME28Q9   | S         | CNEPA-NEW       | P       | 0.2356   | µg/l        | 12/13/2024 15:26:01  |
| P5156-05 ME28R0   | S         | CNEPA-NEW       | P       | 1.027    | µg/l        | 12/13/2024 15:26:02  |
| P5156-06 ME28R1   | S         | CNEPA-NEW       | P       | -1.0502  | µg/l        | 12/13/2024 15:26:03  |
| P5156-07 ME28R2   | S         | CNEPA-NEW       | P       | 8.0335   | µg/l        | 12/13/2024 15:26:04  |
| P5156-08 ME28T4   | S         | CNEPA-NEW       | P       | 15.3273  | µg/l        | 12/13/2024 15:26:05  |
| P5156-09 ME28T5   | S         | CNEPA-NEW       | P       | 20.3619  | µg/l        | 12/13/2024 15:26:06  |
| P5156-10 ME28T6   | S         | CNEPA-NEW       | P       | 19.4846  | µg/l        | 12/13/2024 15:26:07  |
| P5156-11 ME28T7   | S         | CNEPA-NEW       | P       | 6.35     | µg/l        | 12/13/2024 15:26:08  |
| P5156-12 ME28T8   | S         | CNEPA-NEW       | P       | 6.4227   | µg/l        | 12/13/2024 15:26:09  |
| P5156-13 ME28T9   | S         | CNEPA-NEW       | P       | 39.0772  | µg/l        | 12/13/2024 15:33:34  |
| P5156-14 ME28W0   | S         | CNEPA-NEW       | P       | 93.8537  | µg/l        | 12/13/2024 15:33:35  |
| P5156-15 ME28W1   | S         | CNEPA-NEW       | P       | 86.8094  | µg/l        | 12/13/2024 15:33:36  |
| P5156-16 ME28W2   | S         | CNEPA-NEW       | P       | 75.5124  | µg/l        | 12/13/2024 15:33:37  |
| P5156-17 ME28W2D  | S         | CNEPA-NEW       | P       | 74.9996  | µg/l        | 12/13/2024 15:33:38  |
| P5156-18 ME28W2S  | S         | CNEPA-NEW       | P       | 166.7435 | µg/l        | 12/13/2024 15:33:39  |
| P5156-19 ME28W3   | S         | CNEPA-NEW       | P       | 14.9022  | µg/l        | 12/13/2024 15:33:41  |
| P5156-20 ME28W4   | S         | CNEPA-NEW       | P       | 7.4621   | µg/l        | 12/13/2024 15:33:42  |
| P5156-21 ME28W5   | S         | CNEPA-NEW       | P       | 38.2434  | µg/l        | 12/13/2024 15:33:43  |
| P5156-22 ME28W6   | S         | CNEPA-NEW       | P       | 33.7899  | µg/l        | 12/13/2024 15:33:44  |
| CCV002 CCV002     | S         | CNEPA-NEW       | P       | 242.8387 | µg/l        | 12/13/2024 15:41:11  |
| CCB002 CCB002     | S         | CNEPA-NEW       | P       | -0.9412  | µg/l        | 12/13/2024 15:41:12  |
| PB165609BL PBS609 | S         | CNEPA-NEW       | P       | -1.0677  | µg/l        | 12/13/2024 15:41:13  |
| P5233-01 ME28R5   | S         | CNEPA-NEW       | P       | 9.2269   | µg/l        | 12/13/2024 15:41:14  |
| P5233-02 ME28R6   | S         | CNEPA-NEW       | P       | 9.9942   | µg/l        | 12/13/2024 15:41:15  |
| P5233-03 ME28R7   | S         | CNEPA-NEW       | P       | 1.3935   | µg/l        | 12/13/2024 15:41:16  |

|                  |   |           |   |               |                     |
|------------------|---|-----------|---|---------------|---------------------|
| P5233-04 ME28R8  | S | CNEPA-NEW | P | 4.5028 µg/l   | 12/13/2024 15:41:17 |
| P5233-05 ME28R9  | S | CNEPA-NEW | P | 0.4627 µg/l   | 12/13/2024 15:41:18 |
| P5233-06 ME28S0  | S | CNEPA-NEW | P | 2.0623 µg/l   | 12/13/2024 15:41:19 |
| P5233-07 ME28S1  | S | CNEPA-NEW | P | -0.9869 µg/l  | 12/13/2024 15:48:42 |
| P5233-08 ME28S2  | S | CNEPA-NEW | P | 7.9739 µg/l   | 12/13/2024 15:48:43 |
| P5233-09 ME28S3  | S | CNEPA-NEW | P | 0.1701 µg/l   | 12/13/2024 15:48:44 |
| P5233-10 ME28S4  | S | CNEPA-NEW | P | -1.08 µg/l    | 12/13/2024 15:48:45 |
| P5233-11 ME28S5  | S | CNEPA-NEW | P | 0.3787 µg/l   | 12/13/2024 15:48:46 |
| P5233-12 ME28S6  | S | CNEPA-NEW | P | 0.8105 µg/l   | 12/13/2024 15:48:47 |
| P5233-13 ME28S7  | S | CNEPA-NEW | P | 1.3461 µg/l   | 12/13/2024 15:48:48 |
| P5233-14 ME28S8  | S | CNEPA-NEW | P | 3.4685 µg/l   | 12/13/2024 15:48:49 |
| P5233-15 ME28S9  | S | CNEPA-NEW | P | 4.4354 µg/l   | 12/13/2024 15:48:50 |
| P5233-16 ME28T0  | S | CNEPA-NEW | P | 14.3646 µg/l  | 12/13/2024 15:48:51 |
| P5233-17 ME28T1  | S | CNEPA-NEW | P | 104.6734 µg/l | 12/13/2024 15:48:52 |
| P5233-18 ME28T2  | S | CNEPA-NEW | P | -0.329 µg/l   | 12/13/2024 15:55:20 |
| P5233-19 ME28T3  | S | CNEPA-NEW | P | 29.9746 µg/l  | 12/13/2024 15:55:21 |
| P5233-20 ME28S7D | S | CNEPA-NEW | P | 1.3723 µg/l   | 12/13/2024 15:55:22 |
| P5233-21 ME28S7S | S | CNEPA-NEW | P | 95.6853 µg/l  | 12/13/2024 15:55:23 |
| CCV003 CCV003    | S | CNEPA-NEW | P | 244.3878 µg/l | 12/13/2024 15:55:27 |
| CCB003 CCB003    | S | CNEPA-NEW | P | -0.9566 µg/l  | 12/13/2024 15:55:28 |

Calibration results

Aquakem 7.2AQ1

Page: 1

CHEMTECH CONSULTING GROUP INC  
284 Sheffield Street, Mountainside, NJ 07092

12/13/2024 13:06

Reviewed by : NF Instrument ID : Konelab

Test CNEPA-NEW

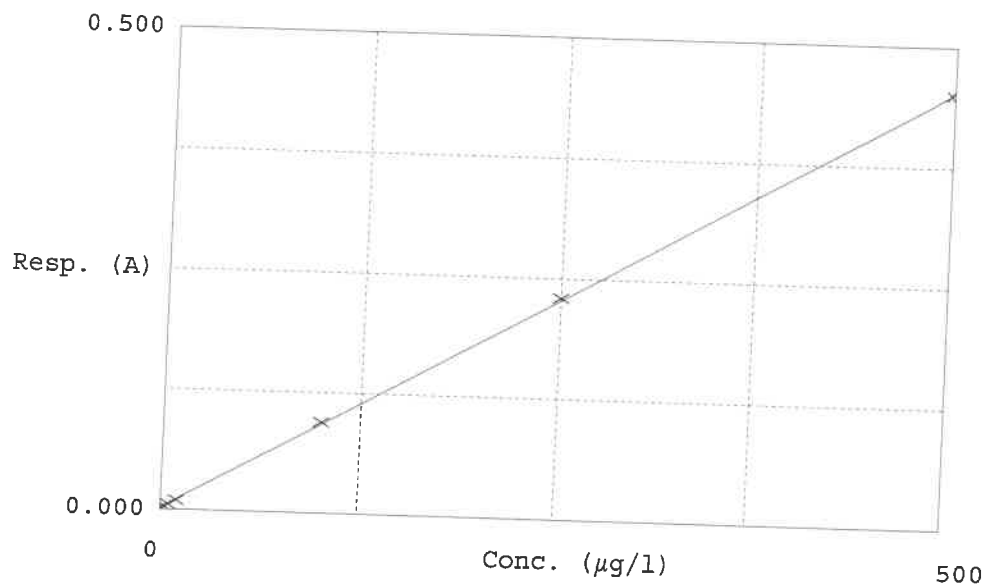
Accepted 12/13/2024 13:06

Factor slope ~~1111~~ 0.000900 NF  
Bias intercept 0.002

12.17.2024

Coeff. of det. 0.999875

Errors



| Calibrator    | Response | Calc. con. | Conc.    | Re<br>Errors |
|---------------|----------|------------|----------|--------------|
| 1500 0.0PPBCN | 0.001    | -0.6432    | 0.0000   |              |
| 250 5.0PPBCN  | 0.005    | 3.5521     | 5.0000   | -29.0        |
| 3500 10PPBCN  | 0.010    | 8.4432     | 10.0000  | -15.6        |
| 4500 100PPBCN | 0.094    | 102.6429   | 100.0000 | 2.6          |
| 5500 250PPBCN | 0.230    | 252.9759   | 250.0000 | 1.2          |
| 6500 500PPBCN | 0.450    | 498.0291   | 500.0000 | -0.4         |

NF  
12.13.2024