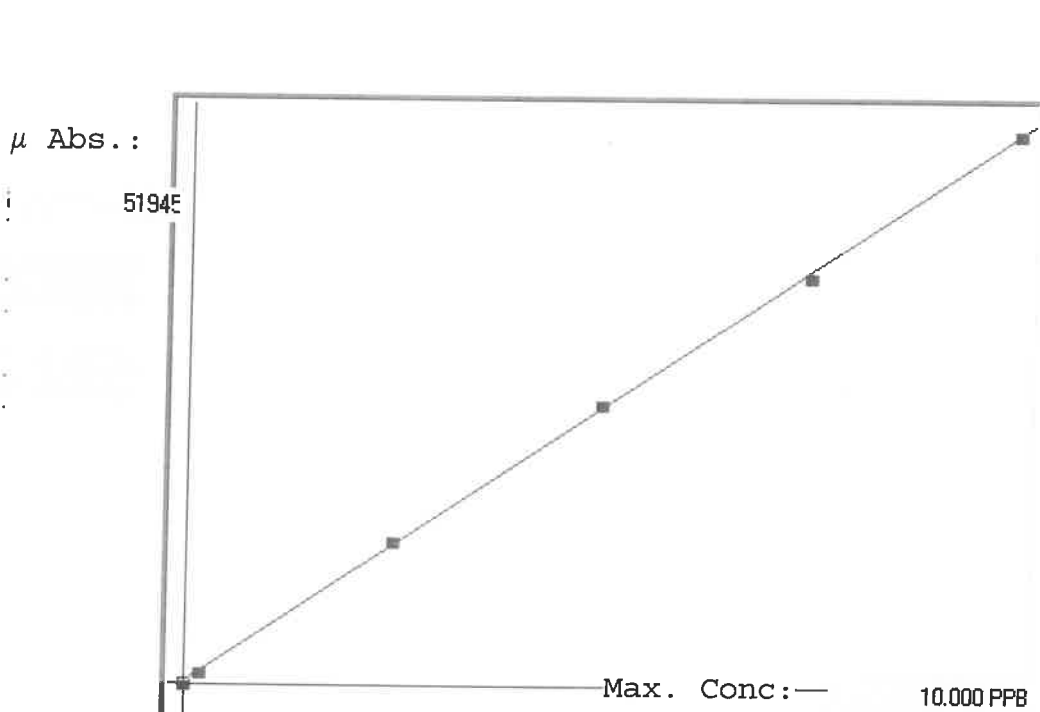


LB134038

SFAM01.1

INSTRUMENT ID: CV1



Linear

A= 0.0000e+000

B= 1.9370e-004 slope

C= -5.2041e-002 intercept

Rho= 0.9998618

Accept=Accepted

Std ID	Conc.	Calc.	Dev.	Mean	SD or %RSD	Rep 1	Rep 2	Rep 3	Rep 4	Rep 5	gcp
0.00	0.000	-0.041	-0.041	56	0.000	56	0				=
0.05	0.050					442	0				-12
0.20	0.200	0.177	-0.023	1181	0.0 %	1181					2
2.50	2.500	2.561	0.061	13492	0.0 %	13492					-2
5.00	5.000	5.088	0.088	26534	0.0 %	26534					-1
7.50	7.500	7.406	-0.094	38504	0.0 %	38504					0
10.0	10.000	10.010	0.010	51945	0.0 %	51945					

LB134038

INSTRUMENT ID : CV1

Sample ID	Extended ID	μ Abs.	Conc.	Std Conc	Method	Units	Date	Type
	0 S0	56	-		0 SFAM01.1	PPB	12/20/2024 11:32	Std
	0.2 S01	1181	-		0.2 SFAM01.1	PPB	12/20/2024 11:38	Std
	2.5 S02	13492	-		2.5 SFAM01.1	PPB	12/20/2024 11:40	Std
	5 S03	26534	-		5 SFAM01.1	PPB	12/20/2024 11:42	Std
	7.5 S04	38504	-		7.5 SFAM01.1	PPB	12/20/2024 11:45	Std
	10 S05	51945	-		10 SFAM01.1	PPB	12/20/2024 11:50	Std
ICV027	ICV027	20235	3.8674 -		SFAM01.1	PPB	12/20/2024 11:53	SMPL
ICB027	ICB027	463	0.0376 -		SFAM01.1	PPB	12/20/2024 11:55	SMPL
CCV054	CCV054	26609	5.102 -		SFAM01.1	PPB	12/20/2024 11:57	SMPL
CCB054	CCB054	434	0.032 -		SFAM01.1	PPB	12/20/2024 11:59	SMPL
PB165791BL	PBS791	483	0.0415 -		SFAM01.1	PPB	12/20/2024 12:02	SMPL
P5156-01	ME28Q6	5486	1.0106 -		SFAM01.1	PPB	12/20/2024 12:04	SMPL
P5156-02	ME28Q7	778	0.0987 -		SFAM01.1	PPB	12/20/2024 12:06	SMPL
P5156-03	ME28Q8	617	0.0675 -		SFAM01.1	PPB	12/20/2024 12:09	SMPL
P5156-04	ME28Q9	1251	0.1903 -		SFAM01.1	PPB	12/20/2024 12:11	SMPL
P5156-05	ME28R0	1239	0.1879 -		SFAM01.1	PPB	12/20/2024 12:13	SMPL
P5156-06	ME28R1	834	0.1095 -		SFAM01.1	PPB	12/20/2024 12:15	SMPL
P5156-07	ME28R2	2148	0.364 -		SFAM01.1	PPB	12/20/2024 12:18	SMPL
P5156-08	ME28T4	1458	0.2304 -		SFAM01.1	PPB	12/20/2024 12:20	SMPL
P5156-09	ME28T5	1671	0.2716 -		SFAM01.1	PPB	12/20/2024 12:22	SMPL
P5156-10	ME28T6	1138	0.1684 -		SFAM01.1	PPB	12/20/2024 12:24	SMPL
P5156-11	ME28T7	1665	0.2705 -		SFAM01.1	PPB	12/20/2024 12:27	SMPL
P5156-12	ME28T8	776	0.0983 -		SFAM01.1	PPB	12/20/2024 12:29	SMPL
P5156-13	ME28T9	3317	0.5905 -		SFAM01.1	PPB	12/20/2024 12:31	SMPL
P5156-14	ME28W0	3224	0.5724 -		SFAM01.1	PPB	12/20/2024 12:33	SMPL
P5156-15	ME28W1	4997	0.9159 -		SFAM01.1	PPB	12/20/2024 12:36	SMPL
P5156-16	ME28W2	3030	0.5349 -		SFAM01.1	PPB	12/20/2024 12:43	SMPL
P5156-17	ME28W2D	3144	0.5569 -		SFAM01.1	PPB	12/20/2024 12:45	SMPL
P5156-19	ME28W3	1743	0.2856 -		SFAM01.1	PPB	12/20/2024 12:50	SMPL
CCV055	CCV055	26172	5.0174 -		SFAM01.1	PPB	12/20/2024 12:52	SMPL
CCB055	CCB055	387	0.0229 -		SFAM01.1	PPB	12/20/2024 12:54	SMPL
P5156-20	ME28W4	1222	0.1847 -		SFAM01.1	PPB	12/20/2024 12:57	SMPL
P5156-21	ME28W5	4146	0.751 -		SFAM01.1	PPB	12/20/2024 12:59	SMPL
P5156-22	ME28W6	3964	0.7158 -		SFAM01.1	PPB	12/20/2024 13:01	SMPL
P5156-18	ME28W2S	15148	2.8821 -		SFAM01.1	PPB	12/20/2024 13:03	SMPL
CCV056	CCV056	26450	5.0713 -		SFAM01.1	PPB	12/20/2024 13:06	SMPL
CCB056	CCB056	434	0.032 -		SFAM01.1	PPB	12/20/2024 13:08	SMPL