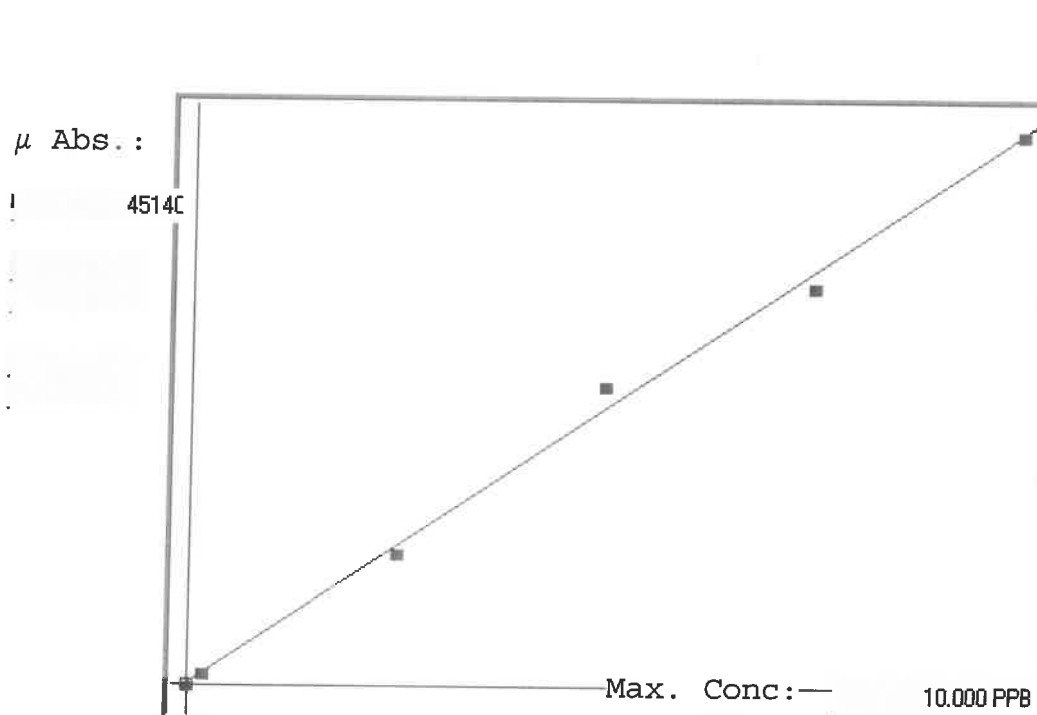


LA134105

SFAM01.1

INSTRUMENT ID: CV1



Linear

A= 0.0000e+000

B= 2.2199e-004 slope

C= -3.2565e-002 y-intercept

Rho= 0.9982663

Accept=Accepted

Std ID	Conc.	Calc.	Dev.	Mean	SD or %RSD	Rep 1	Rep 2	Rep 3	Rep 4	Rep 5	o/d
0.00	0.000	-0.025	-0.025	36	0.000	36	0				=
0.05	0.050					442	0				-8
0.20	0.200	0.185	-0.015	981	0.0 %	981					-4
2.50	2.500	2.390	-0.110	10911	0.0 %	10911					+9
5.00	5.000	5.439	0.439	24648	0.0 %	24648					-4
7.50	7.500	7.222	-0.278	32681	0.0 %	32681					0
10.0	10.000	9.988	-0.012	45140	0.0 %	45140					

LB134105

INSTRUMENT ID : CV1

Sample ID	Extended ID	$\mu$ Abs.	Conc.	Std Conc	Method	Units	Date	Type
	0 S0	36	-		0 SFAM01.1	PPB	12/27/2024 10:30	Std
	0.2 S01	981	-		0.2 SFAM01.1	PPB	12/27/2024 10:32	Std
	2.5 S02	10911	-		2.5 SFAM01.1	PPB	12/27/2024 10:35	Std
	5 S03	24648	-		5 SFAM01.1	PPB	12/27/2024 10:39	Std
	7.5 S04	32681	-		7.5 SFAM01.1	PPB	12/27/2024 10:42	Std
	10 S05	45140	-		10 SFAM01.1	PPB	12/27/2024 10:47	Std
ICV033	ICV033	16931	3.726 -		SFAM01.1	PPB	12/27/2024 11:10	SMPL
ICB033	ICB033	-9	-0.0346 -		SFAM01.1	PPB	12/27/2024 11:12	SMPL
CCV074	CCV074	20715	4.566 -		SFAM01.1	PPB	12/27/2024 11:14	SMPL
CCB074	CCB074	-58	-0.0454 -		SFAM01.1	PPB	12/27/2024 11:17	SMPL
PB165888BL	PBS888	182	0.0078 -		SFAM01.1	PPB	12/27/2024 11:19	SMPL
P5250-01	MJNBZ1	2156	0.4461 -		SFAM01.1	PPB	12/27/2024 11:21	SMPL
P5250-02	MJNBZ3	1937	0.3974 -		SFAM01.1	PPB	12/27/2024 11:23	SMPL
P5250-03	MJNBZ4	935	0.175 -		SFAM01.1	PPB	12/27/2024 11:26	SMPL
P5250-04	MJNBZ7	1012	0.1921 -		SFAM01.1	PPB	12/27/2024 11:28	SMPL
P5250-05	MJNBZ8	449	0.0671 -		SFAM01.1	PPB	12/27/2024 11:30	SMPL
P5250-06	MJNBZ2	483	0.0747 -		SFAM01.1	PPB	12/27/2024 11:32	SMPL
P5250-07	MJNBZ2D	422	0.0611 -		SFAM01.1	PPB	12/27/2024 11:37	SMPL
P5250-08	MJNBZ2S	12348	2.7086 -		SFAM01.1	PPB	12/27/2024 11:40	SMPL
CCV075	CCV075	21918	4.8331 -		SFAM01.1	PPB	12/27/2024 11:42	SMPL
CCB075	CCB075	-10	-0.0348 -		SFAM01.1	PPB	12/27/2024 11:44	SMPL