

L3134089

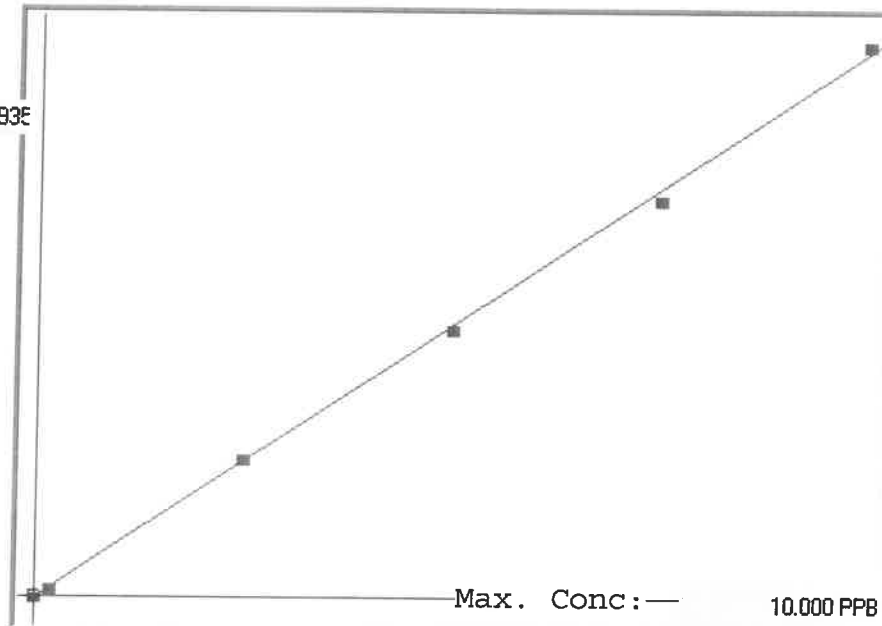
SFAM01.1

INSTRUMENT ID: CV1

Linear

μ Abs.:

45935



A= 0.0000e+000

B= 2.2035e-004 slope

C= 2.3258e-002 y-intercept

Rho= 0.9996130

Accept=Accepted

Std ID	Conc.	Calc.	Dev.	Mean	SD or %RSD	Rep 1	Rep 2	Rep 3	Rep 4	Rep 5	σ/μ
0.00	0.000	0.047	0.047	106	0.000	106	0				0/10
0.05	0.050					442	0				1
0.20	0.200	0.191	-0.009	761	0.0 %	761					5
2.50	2.500	2.556	0.056	11496	0.0 %	11496					2
5.00	5.000	4.944	-0.056	22332	0.0 %	22332					1
7.50	7.500	7.317	-0.183	33099	0.0 %	33099					2
10.0	10.000	10.145	0.145	45935	0.0 %	45935					1

LB134089

INSTRUMENT ID : CV1

Sample ID	Extended ID	μ Abs.	Conc.	Std Conc	Method	Units	Date	Type
	0 S0	106	-		0 SFAM01.1	PPB	12/26/2024 15:10	Std
	0.2 S01	761	-		0.2 SFAM01.1	PPB	12/26/2024 15:12	Std
	2.5 S02	11496	-		2.5 SFAM01.1	PPB	12/26/2024 15:14	Std
	5 S03	22332	-		5 SFAM01.1	PPB	12/26/2024 15:16	Std
	7.5 S04	33099	-		7.5 SFAM01.1	PPB	12/26/2024 15:21	Std
	10 S05	45935	-		10 SFAM01.1	PPB	12/26/2024 15:26	Std
ICV032	ICV032	16745	3.7131 -		SFAM01.1	PPB	12/26/2024 15:29	SMPL
ICB032	ICB032	-29	0.0169 -		SFAM01.1	PPB	12/26/2024 15:31	SMPL
CCV070	CCV070	22875	5.0638 -		SFAM01.1	PPB	12/26/2024 15:34	SMPL
CCB070	CCB070	-54	0.0114 -		SFAM01.1	PPB	12/26/2024 15:36	SMPL
PB165864BL	PBS864	236	0.0753 -		SFAM01.1	PPB	12/26/2024 15:38	SMPL
P5259-01	ME28W7	3187	0.7255 -		SFAM01.1	PPB	12/26/2024 15:41	SMPL
P5259-02	ME28W8	3736	0.8465 -		SFAM01.1	PPB	12/26/2024 15:43	SMPL
P5259-03	ME28W9	2421	0.5567 -		SFAM01.1	PPB	12/26/2024 15:45	SMPL
P5259-04	ME28X0	2298	0.5296 -		SFAM01.1	PPB	12/26/2024 15:47	SMPL
P5259-05	ME28X0D	2180	0.5036 -		SFAM01.1	PPB	12/26/2024 15:50	SMPL
P5259-06	ME28X0S	13680	3.0377 -		SFAM01.1	PPB	12/26/2024 15:52	SMPL
P5259-07	ME28X1	2050	0.475 -		SFAM01.1	PPB	12/26/2024 15:54	SMPL
P5259-08	ME28X2	2890	0.6601 -		SFAM01.1	PPB	12/26/2024 15:56	SMPL
P5259-09	ME28X3	1953	0.4536 -		SFAM01.1	PPB	12/26/2024 15:59	SMPL
P5259-10	ME28X4	1965	0.4563 -		SFAM01.1	PPB	12/26/2024 16:01	SMPL
P5259-11	ME28X5	1009	0.2456 -		SFAM01.1	PPB	12/26/2024 16:03	SMPL
P5259-12	ME28X6	1888	0.4393 -		SFAM01.1	PPB	12/26/2024 16:05	SMPL
P5259-13	ME28X7	950	0.2326 -		SFAM01.1	PPB	12/26/2024 16:08	SMPL
P5259-14	ME28X8	353	0.101 -		SFAM01.1	PPB	12/26/2024 16:10	SMPL
P5259-15	ME28X9	1406	0.3331 -		SFAM01.1	PPB	12/26/2024 16:12	SMPL
P5259-16	ME28Y0	6270	1.4049 -		SFAM01.1	PPB	12/26/2024 16:14	SMPL
P5259-17	ME28Y1	671	0.1711 -		SFAM01.1	PPB	12/26/2024 16:17	SMPL
P5259-18	ME28Y2	665	0.1698 -		SFAM01.1	PPB	12/26/2024 16:19	SMPL
P5259-19	ME28Y3	818	0.2035 -		SFAM01.1	PPB	12/26/2024 16:21	SMPL
CCV071	CCV071	23555	5.2137 -		SFAM01.1	PPB	12/26/2024 16:24	SMPL
CCB071	CCB071	6	0.0246 -		SFAM01.1	PPB	12/26/2024 16:26	SMPL
P5259-20	ME28Y4	636	0.1634 -		SFAM01.1	PPB	12/26/2024 16:28	SMPL
P5259-21	ME28Y5	504	0.1343 -		SFAM01.1	PPB	12/26/2024 16:31	SMPL
PB165865BL	PBS865	47	0.0336 -		SFAM01.1	PPB	12/26/2024 16:36	SMPL
P5266-01	ME28Y6	418	0.1154 -		SFAM01.1	PPB	12/26/2024 16:38	SMPL
P5266-02	ME28Y7	1069	0.2588 -		SFAM01.1	PPB	12/26/2024 16:40	SMPL
P5266-03	ME28Y8	1100	0.2656 -		SFAM01.1	PPB	12/26/2024 16:43	SMPL
P5266-04	ME28Y9	831	0.2064 -		SFAM01.1	PPB	12/26/2024 16:45	SMPL
P5266-05	ME28Z0	1011	0.246 -		SFAM01.1	PPB	12/26/2024 16:47	SMPL
P5266-06	ME28Z1	810	0.2017 -		SFAM01.1	PPB	12/26/2024 16:50	SMPL
P5266-07	ME28Z2	1868	0.4349 -		SFAM01.1	PPB	12/26/2024 16:52	SMPL
P5266-08	ME28Z3	1066	0.2582 -		SFAM01.1	PPB	12/26/2024 16:54	SMPL
P5266-09	ME28Z4	1298	0.3093 -		SFAM01.1	PPB	12/26/2024 16:56	SMPL
P5266-10	ME28Z5	1193	0.2861 -		SFAM01.1	PPB	12/26/2024 16:59	SMPL
P5266-11	ME28Z6	1141	0.2747 -		SFAM01.1	PPB	12/26/2024 17:01	SMPL

LB134089
INSTRUMENT ID : CV1

P5266-12	ME28Z7	694	0.1762 -	SFAM01.1	PPB	12/26/2024 17:03 SMPL
P5266-13	ME28Z8	340	0.0982 -	SFAM01.1	PPB	12/26/2024 17:05 SMPL
P5266-14	ME28Z9	463	0.1253 -	SFAM01.1	PPB	12/26/2024 17:08 SMPL
P5266-15	ME2900	721	0.1821 -	SFAM01.1	PPB	12/26/2024 17:10 SMPL
P5266-16	ME2901	646	0.1656 -	SFAM01.1	PPB	12/26/2024 17:12 SMPL
P5266-17	ME2902	1164	0.2797 -	SFAM01.1	PPB	12/26/2024 17:14 SMPL
CCV072	CCV072	24004	5.3126 -	SFAM01.1	PPB	12/26/2024 17:17 SMPL
CCB072	CCB072	-6	0.0219 -	SFAM01.1	PPB	12/26/2024 17:19 SMPL
P5266-18	ME2903	3542	0.8037 -	SFAM01.1	PPB	12/26/2024 17:21 SMPL
P5266-19	ME28Y9D	3671	0.8322 -	SFAM01.1	PPB	12/26/2024 17:24 SMPL
P5266-20	ME28Y9S	14978	3.3237 -	SFAM01.1	PPB	12/26/2024 17:26 SMPL
CCV073	CCV073	23685	5.2423 -	SFAM01.1	PPB	12/26/2024 17:28 SMPL
CCB073	CCB073	-3	0.0226 -	SFAM01.1	PPB	12/26/2024 17:30 SMPL