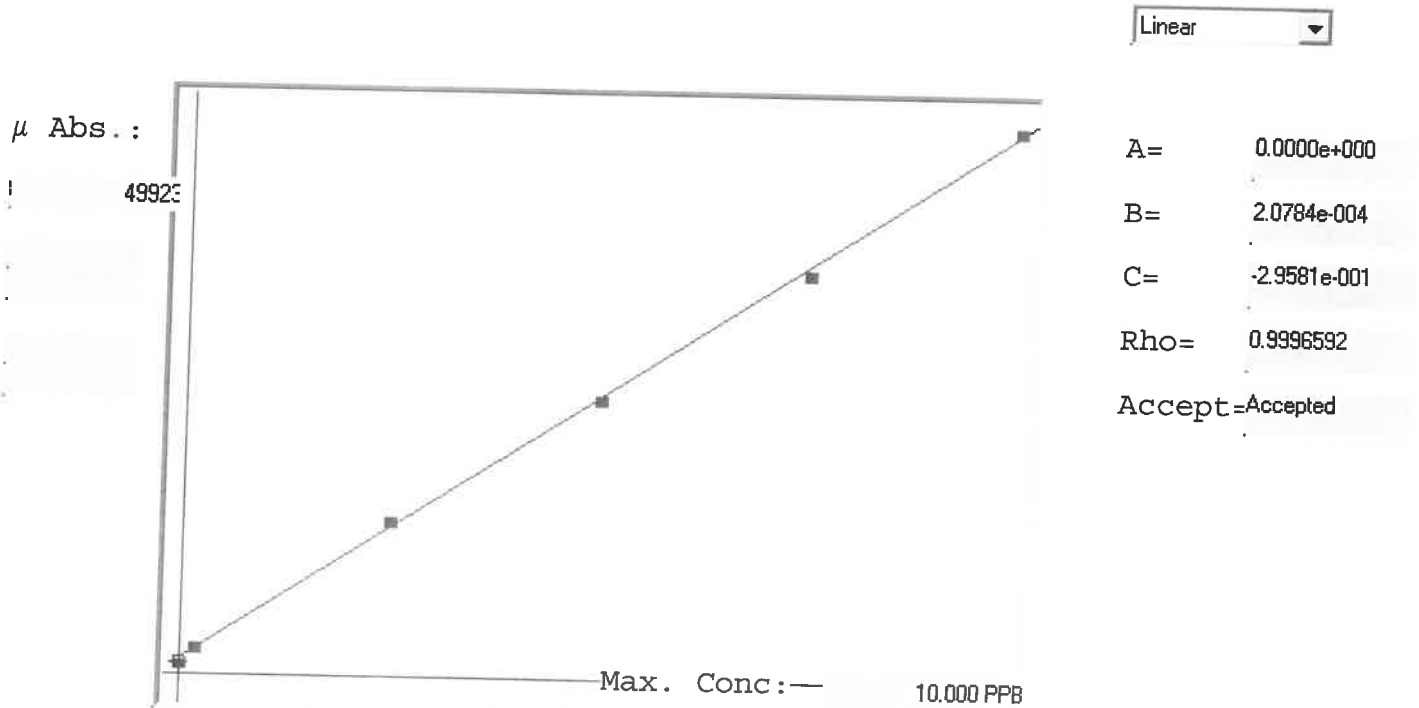


LB133960

7471B

INSTRUMENT ID: CV1



Std ID	Conc.	Calc.	Dev.	Mean	SD or %RSD	Rep 1	Rep 2	Rep 3	Rep 4	Rep 5	%D
0.0	0.000	-0.078	-0.078	1048	0.000	1048					
0.2	0.200	0.226	0.026	2509	0.0 %	2509					
2.5	2.500	2.643	0.143	14139	0.0 %	14139					
5.0	5.000	4.976	-0.024	25364	0.0 %	25364					
7.5	7.500	7.353	-0.147	36803	0.0 %	36803					
10.0	10.000	10.080	0.080	49923	0.0 %	49923					

0/0D
13
5
0
-2
1

LB133960 INSTRUMENT ID : CV1

Method: 7471B

Operator: Admin

Date of Analysis: 16 Dec 2024 10:51:32

Sample ID	Extended ID	µ Abs	Conc	Std Cond Method	Units	Date	Type	Type
0.0 - 1	50	1048	-	0.00007471B	PPB	16 Dec 2024 11:10:27	S	Std
0.2 - 1	50	2508	-	0.20007471B	PPB	16 Dec 2024 11:12:44	S	Std
2.5 - 1	52	14138	-	2.50007471B	PPB	16 Dec 2024 11:15:01	S	Std
5.0 - 1	55	25364	-	5.00007471B	PPB	16 Dec 2024 11:17:17	S	Std
7.5 - 1	55	36803	-	7.50007471B	PPB	16 Dec 2024 11:19:36	S	Std
10.0 - 1	55	49923	-	10.00007471B	PPB	16 Dec 2024 11:30:21	S	Std
ICV19 - 1	ICV19	20090	3.8797	-7471B	PPB	16 Dec 2024 11:40:58	U	SMPL
ICB19 - 1	ICB19	1257	-0.0348	-7471B	PPB	16 Dec 2024 11:45:50	U	SMPL
CCV29 - 1	CCV29	24675	4.8327	-7471B	PPB	16 Dec 2024 11:51:01	U	SMPL
CCB29 - 1	CCB29	1081	-0.0711	-7471B	PPB	16 Dec 2024 11:55:55	U	SMPL
CRA - 1	CRA	2418	0.2067	-7471B	PPB	16 Dec 2024 12:11:02	U	SMPL
HighStd - 1	HighStd	56113	11.3668	-7471B	PPB	16 Dec 2024 12:21:13	U	SMPL
ChkStd - 1	ChkStd	30340	6.0101	-7471B	PPB	16 Dec 2024 12:51:47	U	SMPL
PB165653BL - 1	PB165653BL	1088	-0.0697	-7471B	PPB	16 Dec 2024 12:59:21	U	SMPL
PB165653BS - 1	PB165653BS	16970	3.2313	-7471B	PPB	16 Dec 2024 13:04:11	U	SMPL
P4368-03 - 1	MDL-SOIL-03-QT4-2024	1898	0.0571	-7471B	PPB	16 Dec 2024 14:07:37	U	SMPL
P5268-01 - 1	OR-02-12122024	4046	0.5451	-7471B	PPB	16 Dec 2024 14:09:54	U	SMPL
P5277-01 - 1	COMP-1A	1065	-0.0745	-7471B	PPB	16 Dec 2024 14:12:11	U	SMPL
P5277-02 - 1	COMP-2A	2092	0.1390	-7471B	PPB	16 Dec 2024 14:14:29	U	SMPL
P5277-03 - 1	COMP-3A	1266	-0.0327	-7471B	PPB	16 Dec 2024 14:16:45	U	SMPL
CCV30 - 1	CCV30	27042	5.3246	-7471B	PPB	16 Dec 2024 14:19:01	U	SMPL
CCB30 - 1	CCB30	1323	-0.0208	-7471B	PPB	16 Dec 2024 14:24:01	U	SMPL
P5277-03DUP - 1	COMP-3ADUP	954	-0.0975	-7471B	PPB	16 Dec 2024 14:28:54	U	SMPL
P5277-03MS - 1	COMP-3AMS	17011	3.2398	-7471B	PPB	16 Dec 2024 14:31:09	U	SMPL
P5277-03MSD - 1	COMP-3AMSD	19353	3.7265	-7471B	PPB	16 Dec 2024 14:36:03	U	SMPL
P5279-01 - 1	ROCKAWAY-PARK	8620	1.4958	-7471B	PPB	16 Dec 2024 14:38:19	U	SMPL
P5287-01 - 1	STONES-A	525	-0.1867	-7471B	PPB	16 Dec 2024 14:40:38	U	SMPL
P5287-03 - 1	STONES-B	2811	0.2884	-7471B	PPB	16 Dec 2024 14:42:56	U	SMPL
P4368-01 - 1	LOD-MDL-SOIL-01-QT4-2024	1737	0.0652	-7471B	PPB	16 Dec 2024 14:47:36	U	SMPL
P5277-03LX5 - 1		145	-0.2657	-7471B	PPB	16 Dec 2024 14:58:42	U	SMPL
P5277-03A - 1		22988	4.4820	-7471B	PPB	16 Dec 2024 15:00:57	U	SMPL
P4368-01RE - 1	LOD-MDL-SOIL-01-QT4-2024RE	1979	0.1155	-7471B	PPB	16 Dec 2024 15:21:01	U	SMPL
CCV31 - 1	CCV31	23985	4.6893	-7471B	PPB	16 Dec 2024 15:26:31	U	SMPL
CCB31 - 1	CCB31	1210	-0.0443	-7471B	PPB	16 Dec 2024 15:28:49	U	SMPL