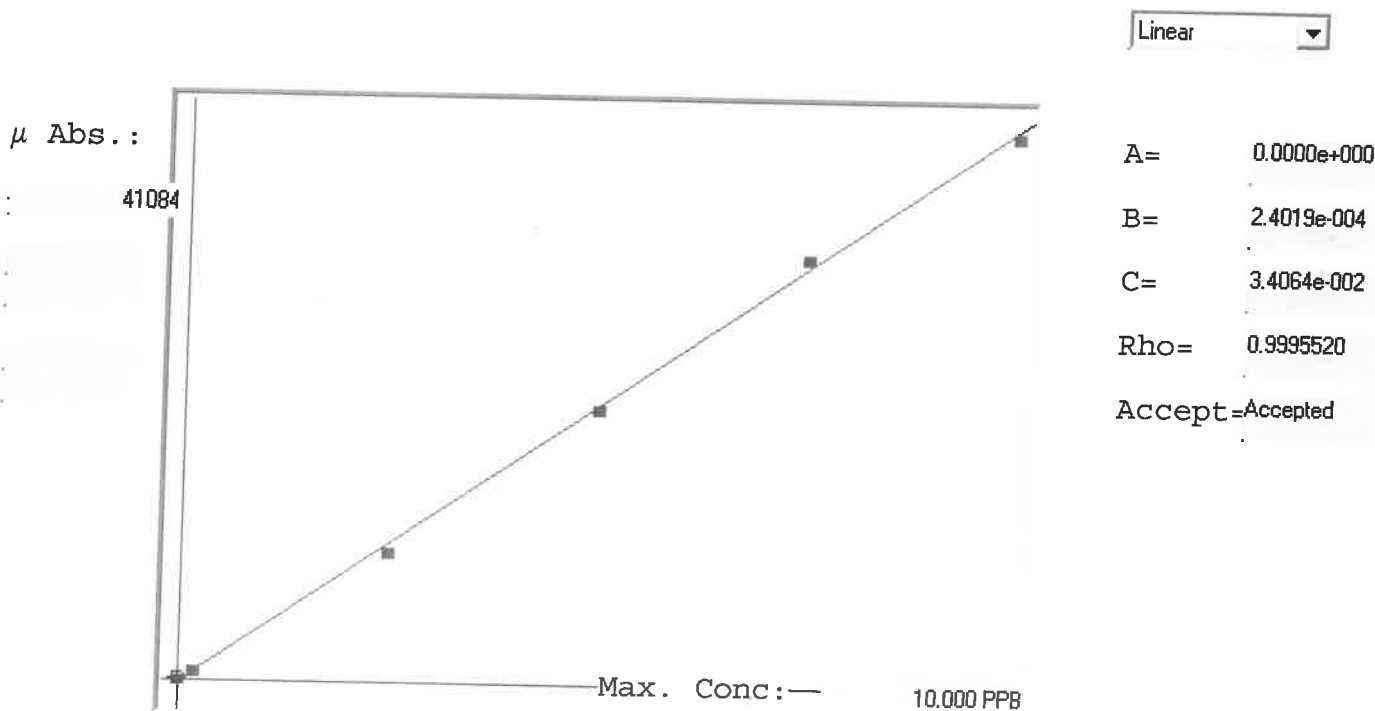


LB133972

7470A

INSTRUMENT ID: CV1



Std ID	Conc.	Calc.	Dev.	Mean	SD or %RSD	Rep 1	Rep 2	Rep 3	Rep 4	Rep 5	0/02
0.0	0.000	0.073	0.073	161	0.000	161	0				
0.2	0.200	0.211	0.011	737	0.0 %	737					
2.5	2.500	2.359	-0.141	9679	0.0 %	9679					
5.0	5.000	4.963	-0.037	20521	0.0 %	20521					
7.5	7.500	7.692	0.192	31883	0.0 %	31883					
10.0	10.000	9.902	-0.098	41084	0.0 %	41084					

0/02
 5
 6
 1
 3
 1

LB133972 INSTRUMENT ID : CV1

Method: 7470A

Operator: Admin

Date of Analysis: 17 Dec 2024 10:13:33

Sample ID	Extended ID	μ Abs.	Conc.	Std Conc	Method	Units	Date	Type	Type
0.0 - 1	SC	161	-	0.0000	7470A	PPB	17 Dec 2024 10:40:40	S	Std
0.2 - 1	SV-2	737	-	0.2000	7470A	PPB	17 Dec 2024 10:42:56	S	Std
2.5 - 1	SL-5	9679	-	2.5000	7470A	PPB	17 Dec 2024 10:45:14	S	Std
5.0 - 1	SS	20521	-	5.0000	7470A	PPB	17 Dec 2024 10:47:30	S	Std
7.5 - 1	SL-5	31883	-	7.5000	7470A	PPB	17 Dec 2024 10:49:47	S	Std
10.0 - 1	SN	41084	-	10.0000	7470A	PPB	17 Dec 2024 10:57:47	S	Std
ICV20 - 1	ICV20	17211	4.1680	-	7470A	PPB	17 Dec 2024 11:05:33	U	SMPL
ICB20 - 1	ICB20	-141	0.0002	-	7470A	PPB	17 Dec 2024 11:07:48	U	SMPL
CCV32 - 1	CCV32	20325	4.9160	-	7470A	PPB	17 Dec 2024 11:10:05	U	SMPL
CCB32 - 1	CCB32	-120	0.0052	-	7470A	PPB	17 Dec 2024 11:12:20	U	SMPL
CRA - 1	CRA	660	0.1926	-	7470A	PPB	17 Dec 2024 11:14:37	U	SMPL
HighStd - 1	HighStd	41509	10.0042	-	7470A	PPB	17 Dec 2024 11:16:53	U	SMPL
ChkStd - 1	ChkStd	29527	7.1262	-	7470A	PPB	17 Dec 2024 11:19:08	U	SMPL
PB165693BL - 1	PBW	-52	0.0216	-	7470A	PPB	17 Dec 2024 11:21:26	U	SMPL
P5283-02 - 1	TT-RW10A-IDWGW-20241213	3572	0.8920	-	7470A	PPB	17 Dec 2024 11:25:59	U	SMPL
P5287-05 - 1	220-2-TRANS-WATER	-137	0.0012	-	7470A	PPB	17 Dec 2024 11:28:17	U	SMPL
P5287-05DUP - 1	220-2-TRANS-WATERDUP	54	0.0470	-	7470A	PPB	17 Dec 2024 11:30:36	U	SMPL
P5287-05MS - 1	220-2-TRANS-WATERMS	14851	3.6012	-	7470A	PPB	17 Dec 2024 11:35:31	U	SMPL
P5287-05MSD - 1	220-2-TRANS-WATERMSD	15025	3.6430	-	7470A	PPB	17 Dec 2024 11:37:46	U	SMPL
CCV33 - 1	CCV33	21655	5.2354	-	7470A	PPB	17 Dec 2024 11:40:02	U	SMPL
CCB33 - 1	CCB33	-6	0.0326	-	7470A	PPB	17 Dec 2024 11:42:18	U	SMPL
PB165693BS - 1	LCSW	18536	4.4863	-	7470A	PPB	17 Dec 2024 11:52:21	U	SMPL
P5287-05LX5 - 1		-95	0.0112	-	7470A	PPB	17 Dec 2024 11:55:21	U	SMPL
P5287-05A - 1		18404	4.4546	-	7470A	PPB	17 Dec 2024 11:57:36	U	SMPL
CCV34 - 1	CCV34	22471	5.4314	-	7470A	PPB	17 Dec 2024 11:59:52	U	SMPL
CCB34 - 1	CCB34	7	0.0357	-	7470A	PPB	17 Dec 2024 12:02:09	U	SMPL