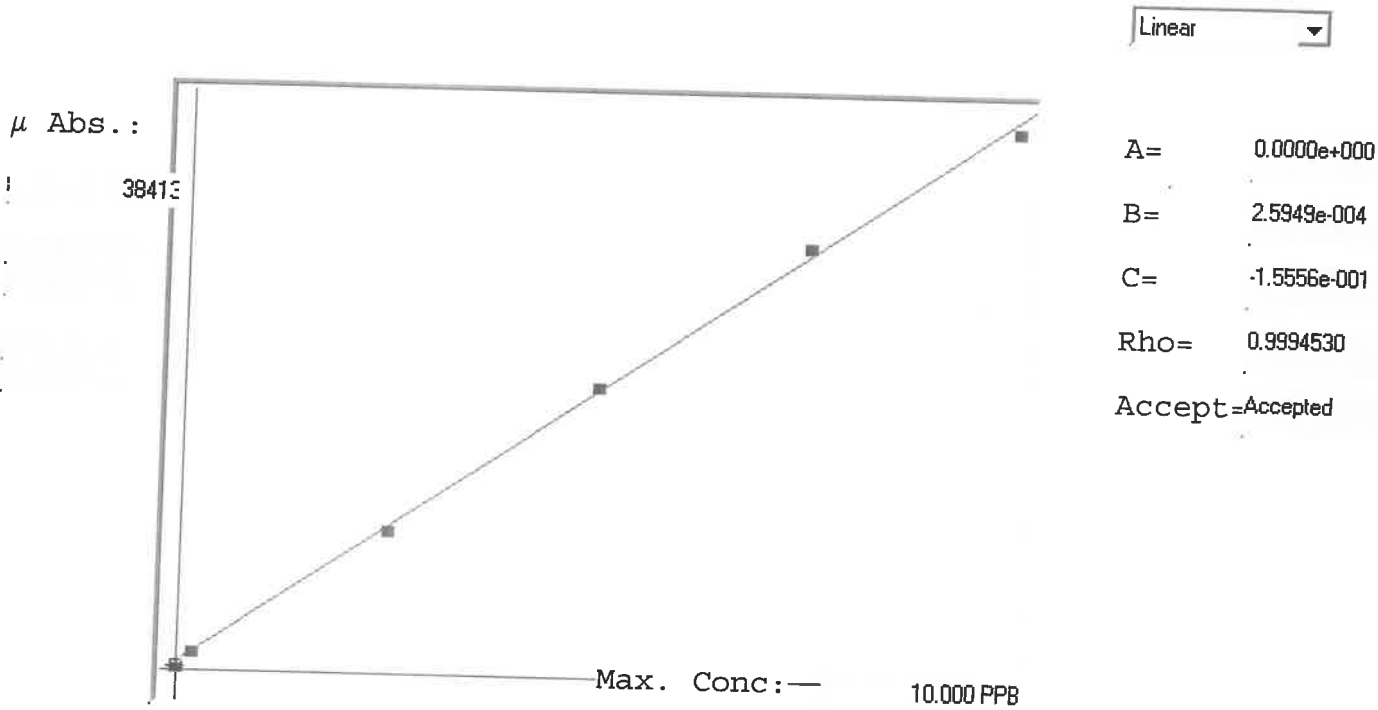


LB134010

7470A

INSTRUMENT ID: CV1



Std ID	Conc.	Calc.	Dev.	Mean	SD or %RSD	Rep 1	Rep 2	Rep 3	Rep 4	Rep 5	%D
0.0	0.000	-0.067	-0.067	340	0.000	340	0				0.1
0.2	0.200	0.216	0.016	1432	0.0 %	1432					1
2.5	2.500	2.442	-0.058	10011	0.0 %	10011					8
5.0	5.000	5.119	0.119	20326	0.0 %	20326					-2
7.5	7.500	7.678	0.178	30190	0.0 %	30190					2
10.0	10.000	9.812	-0.188	38413	0.0 %	38413					2

LB134010 INSTRUMENT ID : CV1

Method: 7470A

Operator: Admin

Date of Analysis: 19 Dec 2024 11:21:21

Sample ID	Extended ID	μ Abs.	Conc.	Std Conc	Method	Units	Date	Type	Type
0.0 - 1	56	340	-	0.0000	7470A	PPB	19 Dec 2024 11:39:55	S	Std
0.2 - 1	50-2	1432	-	0.2000	7470A	PPB	19 Dec 2024 11:42:12	S	Std
2.5 - 1	52-5	10011	-	2.5000	7470A	PPB	19 Dec 2024 11:44:28	S	Std
5.0 - 1	55	20326	-	5.0000	7470A	PPB	19 Dec 2024 11:48:24	S	Std
7.5 - 1	57-5	30190	-	7.5000	7470A	PPB	19 Dec 2024 11:50:41	S	Std
10.0 - 1	58	38413	-	10.0000	7470A	PPB	19 Dec 2024 11:55:41	S	Std
ICV25 - 1	ICV25	15408	3.8426	-	7470A	PPB	19 Dec 2024 11:58:34	U	SMPL
ICB25 - 1	ICB25	237	-0.0941	-	7470A	PPB	19 Dec 2024 12:00:49	U	SMPL
CCV46 - 1	CCV46	18775	4.7163	-	7470A	PPB	19 Dec 2024 12:03:05	U	SMPL
CCB46 - 1	CCB46	236	-0.0943	-	7470A	PPB	19 Dec 2024 12:05:19	U	SMPL
CRA - 1	CRA	1255	0.1701	-	7470A	PPB	19 Dec 2024 12:07:36	U	SMPL
HighStd - 1	HighStd	36442	9.3006	-	7470A	PPB	19 Dec 2024 12:18:47	U	SMPL
ChkStd - 1	ChkStd	29010	7.3721	-	7470A	PPB	19 Dec 2024 12:26:51	U	SMPL
PB165735BL - 1	PBW	448	-0.0393	-	7470A	PPB	19 Dec 2024 12:31:48	U	SMPL
PB165735BS - 1	LCSW	16175	4.0416	-	7470A	PPB	19 Dec 2024 12:39:18	U	SMPL
P5279-02 - 1	ROCKAWAY-PARK	-116	-0.1857	-	7470A	PPB	19 Dec 2024 12:41:33	U	SMPL
P5279-02DUP - 1	ROCKAWAY-PARKDUP	33	-0.1470	-	7470A	PPB	19 Dec 2024 12:43:51	U	SMPL
P5279-02MS - 1	ROCKAWAY-PARKMS	11983	2.9539	-	7470A	PPB	19 Dec 2024 12:46:08	U	SMPL
P5279-02MSD - 1	ROCKAWAY-PARKMSD	10606	2.5965	-	7470A	PPB	19 Dec 2024 12:48:25	U	SMPL
PB165736BL - 1	PBW	504	-0.0248	-	7470A	PPB	19 Dec 2024 12:53:43	U	SMPL
CCV47 - 1	CCV47	20150	5.0731	-	7470A	PPB	19 Dec 2024 12:58:51	U	SMPL
CCB47 - 1	CCB47	433	-0.0432	-	7470A	PPB	19 Dec 2024 13:01:06	U	SMPL
PB165736BS - 1	LCSW	16766	4.1950	-	7470A	PPB	19 Dec 2024 13:05:54	U	SMPL
P5291-13 - 1	WC-20241213	-108	-0.1836	-	7470A	PPB	19 Dec 2024 13:08:09	U	SMPL
P5291-13DUP - 1	WC-20241213DUP	-122	-0.1872	-	7470A	PPB	19 Dec 2024 13:10:26	U	SMPL
P5291-13MS - 1	WC-20241213MS	12104	2.9853	-	7470A	PPB	19 Dec 2024 13:12:42	U	SMPL
P5291-13MSD - 1	WC-20241213MSD	11414	2.8062	-	7470A	PPB	19 Dec 2024 13:14:57	U	SMPL
PB165737BL - 1	PBW	457	-0.0370	-	7470A	PPB	19 Dec 2024 13:17:14	U	SMPL
PB165737BS - 1	LCSW	16622	4.1576	-	7470A	PPB	19 Dec 2024 13:19:32	U	SMPL
P5306-02 - 1	OU4-VSL-07-121224	651	0.0134	-	7470A	PPB	19 Dec 2024 13:26:41	U	SMPL
P5306-02DUP - 1	OU4-VSL-07-121224DUP	478	-0.0315	-	7470A	PPB	19 Dec 2024 13:28:57	U	SMPL
P5306-02MS - 1	OU4-VSL-07-121224MS	15461	3.8564	-	7470A	PPB	19 Dec 2024 13:33:48	U	SMPL
CCV48 - 1	CCV48	19486	4.9008	-	7470A	PPB	19 Dec 2024 13:36:03	U	SMPL
CCB48 - 1	CCB48	464	-0.0352	-	7470A	PPB	19 Dec 2024 13:38:20	U	SMPL
P5306-02MSD - 1	OU4-VSL-07-121224MSD	15725	3.9249	-	7470A	PPB	19 Dec 2024 13:40:36	U	SMPL
P5306-04 - 1	OU4-VSL-08-121224	1621	0.2651	-	7470A	PPB	19 Dec 2024 13:42:52	U	SMPL
P5306-06 - 1	OU4-VSL-09-121224	592	-0.0019	-	7470A	PPB	19 Dec 2024 13:45:08	U	SMPL
P5306-08 - 1	OU4-VSL-10-121224	436	-0.0424	-	7470A	PPB	19 Dec 2024 13:47:24	U	SMPL
P5306-10 - 1	OU4-VSL-11-121224	397	-0.0525	-	7470A	PPB	19 Dec 2024 13:49:40	U	SMPL
P5306-12 - 1	OU4-VSL-12-121224	264	-0.0871	-	7470A	PPB	19 Dec 2024 13:51:57	U	SMPL
P5306-14 - 1	OU4-VSL-13-121224	209	-0.1013	-	7470A	PPB	19 Dec 2024 13:54:13	U	SMPL
P5306-16 - 1	OU4-VSL-14-121224	478	-0.0315	-	7470A	PPB	19 Dec 2024 13:56:30	U	SMPL
CCV49 - 1	CCV49	18957	4.7635	-	7470A	PPB	19 Dec 2024 14:00:30	U	SMPL
CCB49 - 1	CCB49	554	-0.0118	-	7470A	PPB	19 Dec 2024 14:02:45	U	SMPL
P5279-02LX5 - 1		2	-0.1550	-	7470A	PPB	19 Dec 2024 14:05:02	U	SMPL
P5279-02A - 1		16615	4.1558	-	7470A	PPB	19 Dec 2024 14:07:17	U	SMPL
P5291-13LX5 - 1		-73	-0.1745	-	7470A	PPB	19 Dec 2024 14:09:33	U	SMPL
P5291-13A - 1		16596	4.1509	-	7470A	PPB	19 Dec 2024 14:11:49	U	SMPL
P5306-02LX5 - 1		177	-0.1096	-	7470A	PPB	19 Dec 2024 14:14:05	U	SMPL
P5306-02A - 1		16372	4.0927	-	7470A	PPB	19 Dec 2024 14:16:22	U	SMPL
PB165679TB - 1	PB165679TB	646	0.0121	-	7470A	PPB	19 Dec 2024 14:21:15	U	SMPL
PB165680TB - 1	PB165680TB	622	0.0058	-	7470A	PPB	19 Dec 2024 14:23:31	U	SMPL
PB165599TB - 1	PB165599TB	606	0.0017	-	7470A	PPB	19 Dec 2024 14:25:47	U	SMPL
CCV50 - 1	CCV50	19113	4.8040	-	7470A	PPB	19 Dec 2024 14:28:04	U	SMPL
CCB50 - 1	CCB50	474	-0.0326	-	7470A	PPB	19 Dec 2024 14:30:21	U	SMPL