

Data Path : Z:\svoasrv\HPCHEM1\BNA_F\Data\BF121824\
 Data File : BF140911.D
 Acq On : 18 Dec 2024 17:38
 Operator : RC/JU
 Sample : P5291-06
 Misc :
 ALS Vial : 17 Sample Multiplier: 1

Instrument :
 BNA_F
 ClientSampleId :
 MW3-20241213

Quant Time: Dec 19 00:15:38 2024
 Quant Method : Z:\svoasrv\HPCHEM1\BNA_F\Methods\8270-BF121624.M
 Quant Title : ASP BNA STANDARDS FOR 5 POINT CALIBRATION
 QLast Update : Mon Dec 16 16:59:50 2024
 Response via : Initial Calibration

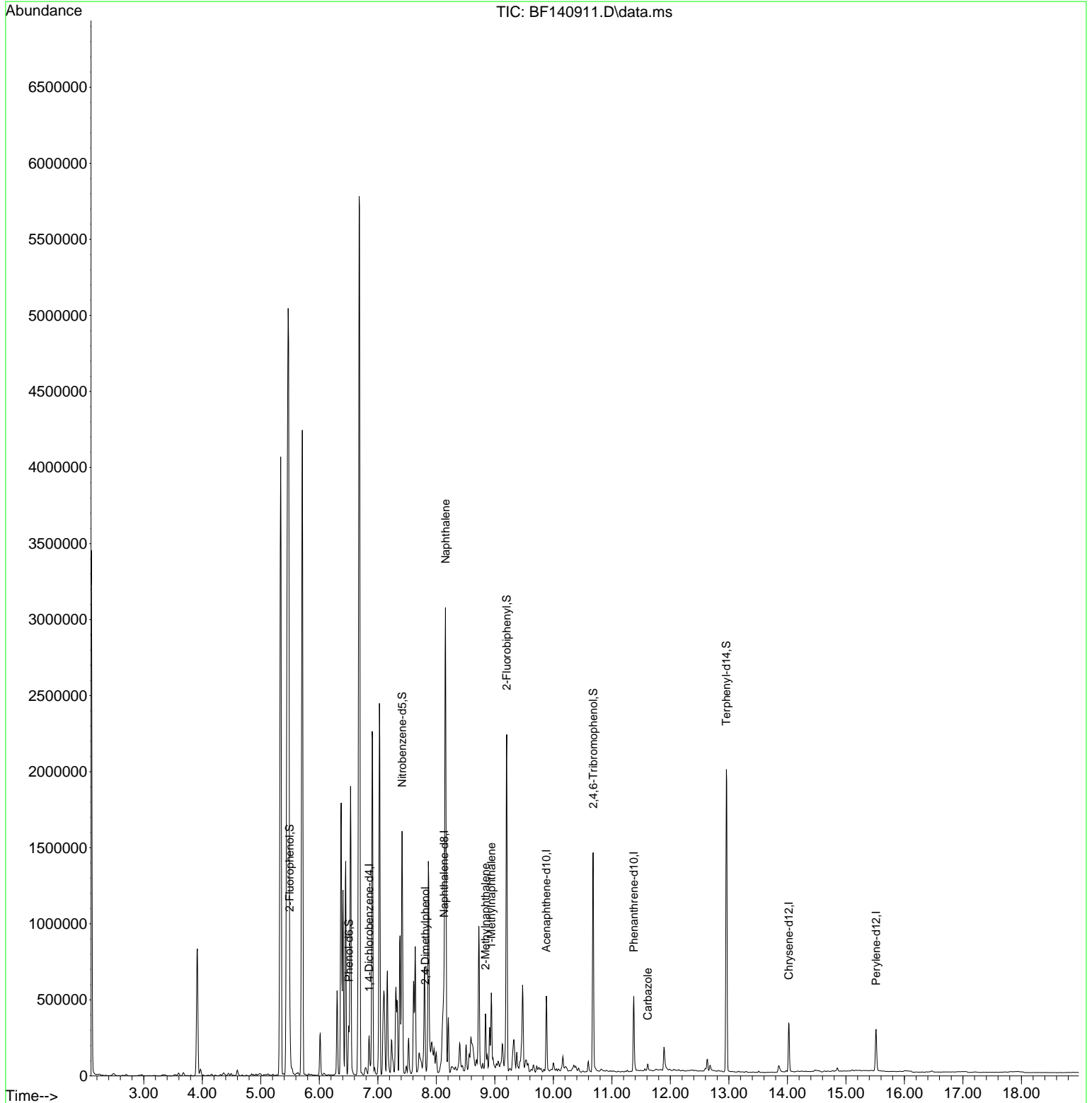
Compound	R.T.	QIon	Response	Conc	Units	Dev(Min)	
Internal Standards							
1) 1,4-Dichlorobenzene-d4	6.851	152	56554	20.000	ng	0.00	
21) Naphthalene-d8	8.134	136	228223	20.000	ng	0.00	
39) Acenaphthene-d10	9.880	164	145439	20.000	ng	0.00	
64) Phenanthrene-d10	11.375	188	254549	20.000	ng	0.00	
76) Chrysene-d12	14.027	240	165146	20.000	ng	0.00	
86) Perylene-d12	15.515	264	165993	20.000	ng	-0.03	
System Monitoring Compounds							
5) 2-Fluorophenol	5.493	112	219618	63.927	ng	0.00	
7) Phenol-d6	6.504	99	177726	39.058	ng	0.00	
23) Nitrobenzene-d5	7.416	82	453858	99.495	ng	0.00	
42) 2,4,6-Tribromophenol	10.680	330	263079	152.941	ng	0.00	
45) 2-Fluorobiphenyl	9.204	172	1002101	94.730	ng	0.00	
79) Terphenyl-d14	12.957	244	1016059	97.017	ng	0.00	
Target Compounds							Qvalue
27) 2,4-Dimethylphenol	7.810	122	13631	5.423	ng		95
31) Naphthalene	8.157	128	2008075	160.178	ng		99
37) 2-Methylnaphthalene	8.839	142	141691	17.086	ng		99
38) 1-Methylnaphthalene	8.939	142	173840	21.196	ng		99
73) Carbazole	11.616	167	25833	2.046	ng		98

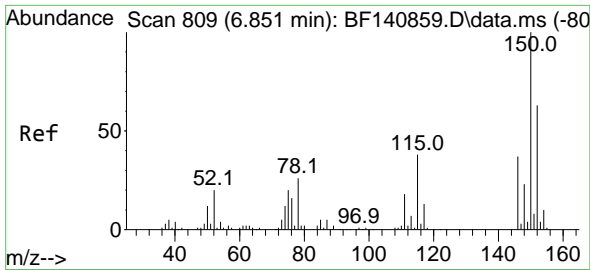
(#) = qualifier out of range (m) = manual integration (+) = signals summed

Data Path : Z:\svoasrv\HPCHEM1\BNA_F\Data\BF121824\
 Data File : BF140911.D
 Acq On : 18 Dec 2024 17:38
 Operator : RC/JU
 Sample : P5291-06
 Misc :
 ALS Vial : 17 Sample Multiplier: 1

Instrument :
 BNA_F
 ClientSampleId :
 MW3-20241213

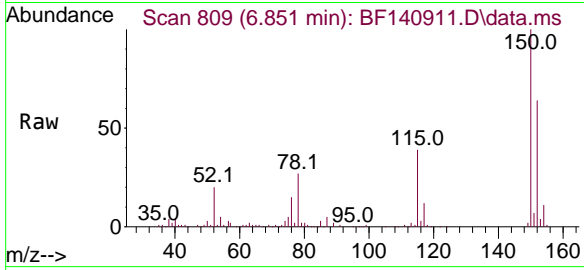
Quant Time: Dec 19 00:15:38 2024
 Quant Method : Z:\svoasrv\HPCHEM1\BNA_F\Methods\8270-BF121624.M
 Quant Title : ASP BNA STANDARDS FOR 5 POINT CALIBRATION
 QLast Update : Mon Dec 16 16:59:50 2024
 Response via : Initial Calibration



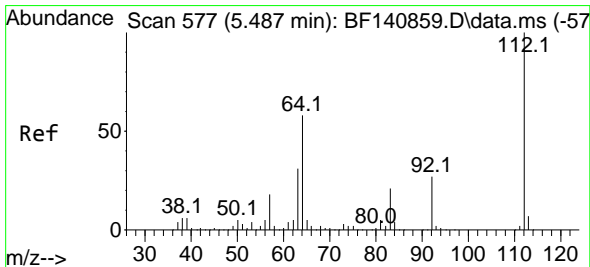
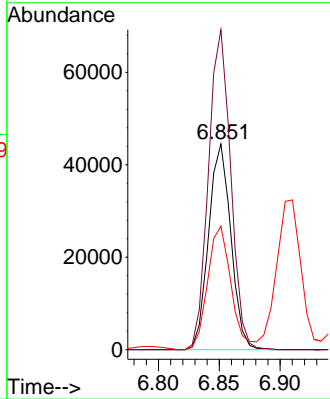
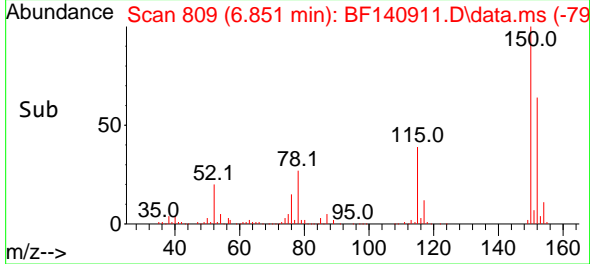


#1
 1,4-Dichlorobenzene-d4
 Concen: 20.000 ng
 RT: 6.851 min Scan# 80
 Delta R.T. 0.000 min
 Lab File: BF140911.D
 Acq: 18 Dec 2024 17:38

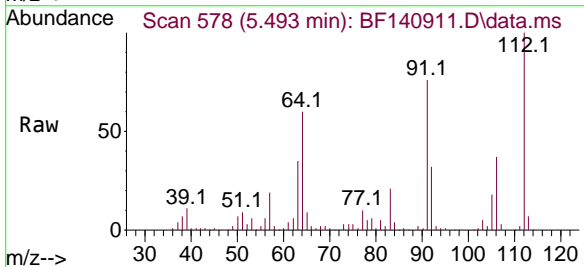
Instrument :
 BNA_F
 ClientSampleId :
 MW3-20241213



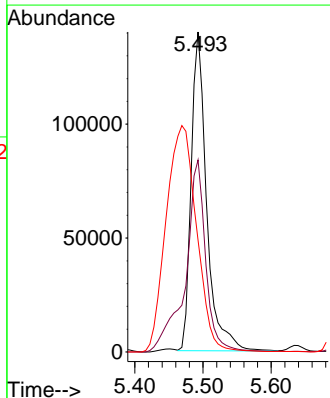
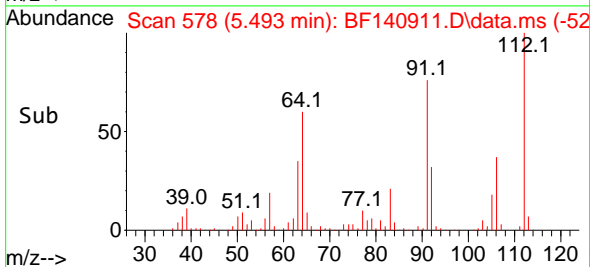
Tgt Ion:152 Resp: 56554
 Ion Ratio Lower Upper
 152 100
 150 155.5 127.9 191.9
 115 60.0 48.0 72.0

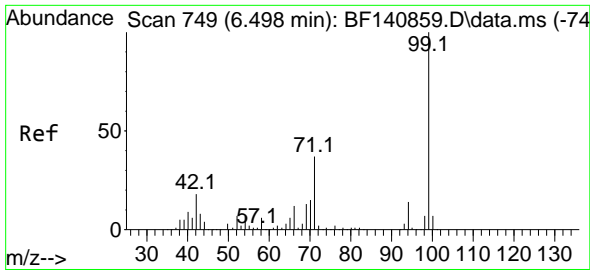


#5
 2-Fluorophenol
 Concen: 63.927 ng
 RT: 5.493 min Scan# 578
 Delta R.T. 0.006 min
 Lab File: BF140911.D
 Acq: 18 Dec 2024 17:38



Tgt Ion:112 Resp: 219618
 Ion Ratio Lower Upper
 112 100
 64 60.0 46.1 69.1
 63 34.9 24.9 37.3



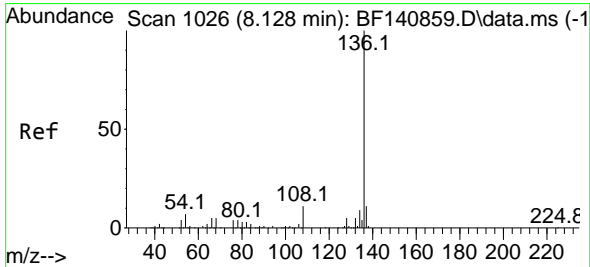
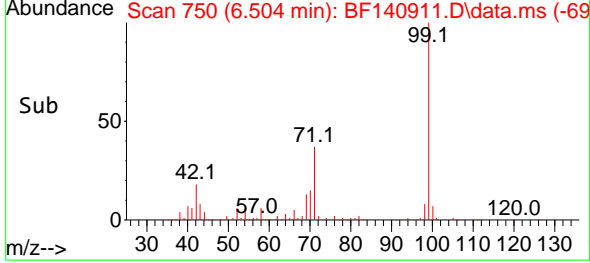
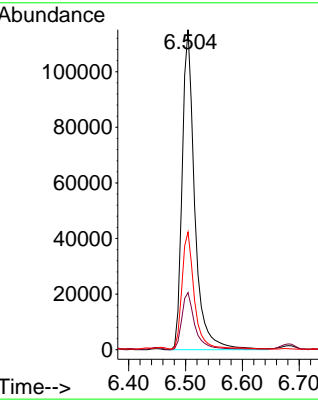
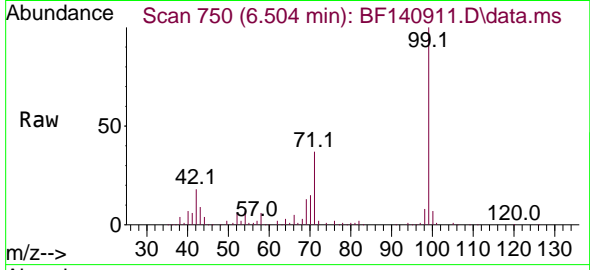


#7
 Phenol-d6
 Concen: 39.058 ng
 RT: 6.504 min Scan# 71
 Delta R.T. 0.006 min
 Lab File: BF140911.D
 Acq: 18 Dec 2024 17:38

Instrument :
 BNA_F
 ClientSampleId :
 MW3-20241213

Tgt Ion: 99 Resp: 177726

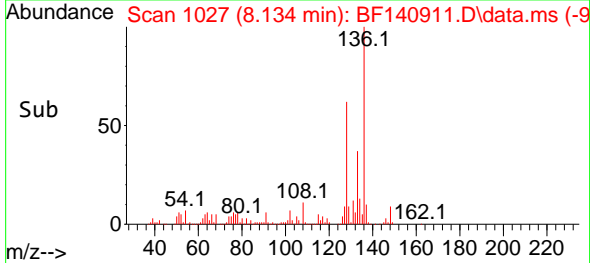
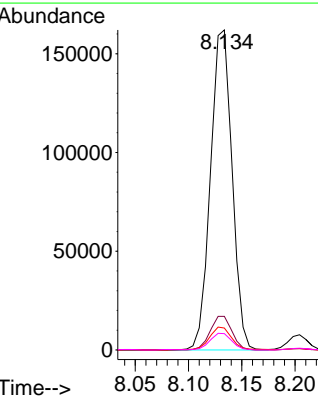
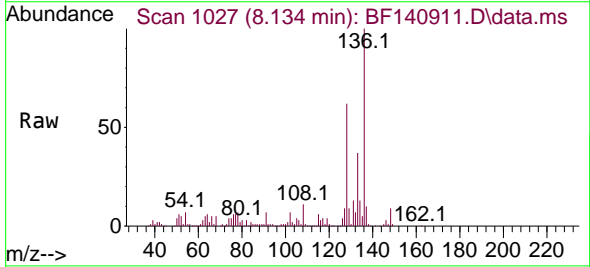
Ion	Ratio	Lower	Upper
99	100		
42	17.8	14.3	21.5
71	36.8	29.9	44.9

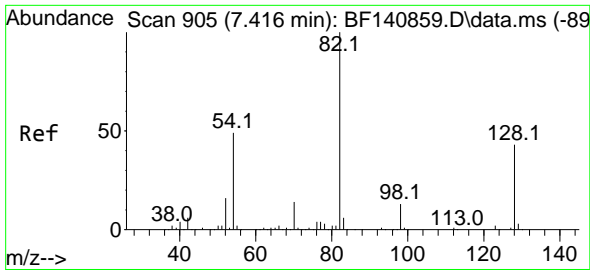


#21
 Naphthalene-d8
 Concen: 20.000 ng
 RT: 8.134 min Scan# 1027
 Delta R.T. 0.006 min
 Lab File: BF140911.D
 Acq: 18 Dec 2024 17:38

Tgt Ion: 136 Resp: 228223

Ion	Ratio	Lower	Upper
136	100		
137	10.5	9.0	13.4
54	6.8	5.6	8.4
68	5.1	4.2	6.2

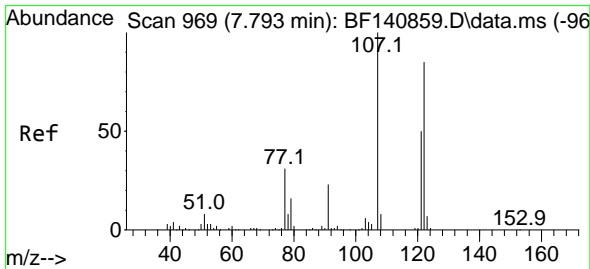
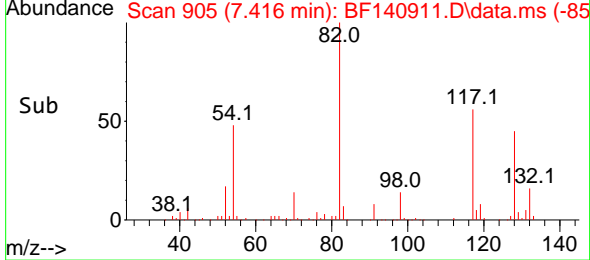
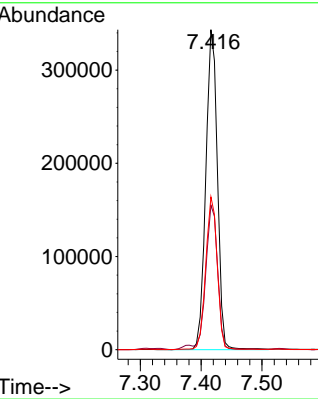
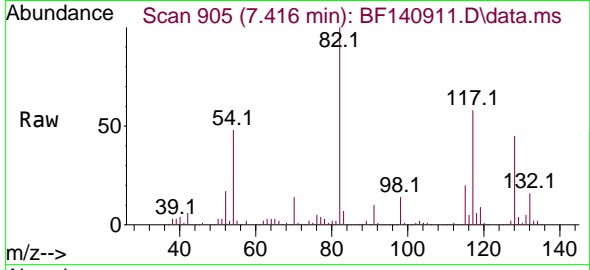




#23
 Nitrobenzene-d5
 Concen: 99.495 ng
 RT: 7.416 min Scan# 905
 Delta R.T. -0.000 min
 Lab File: BF140911.D
 Acq: 18 Dec 2024 17:38

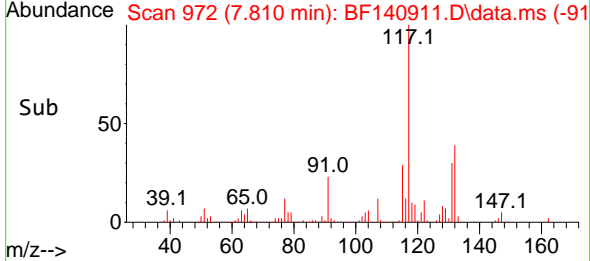
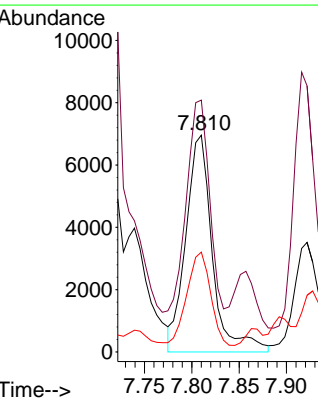
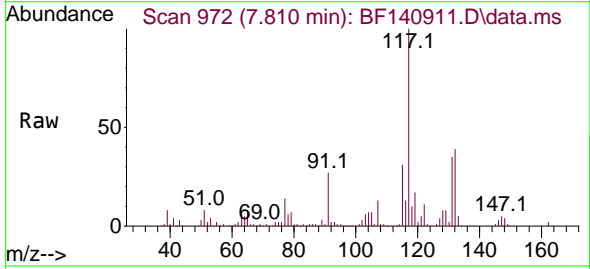
Instrument :
 BNA_F
 ClientSampleId :
 MW3-20241213

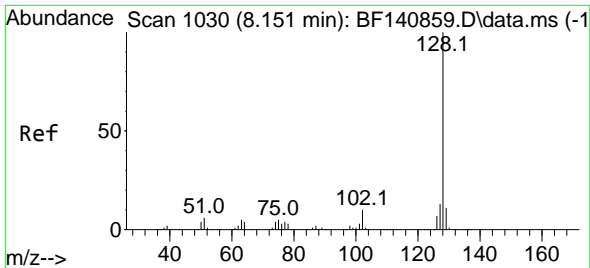
Tgt Ion	Resp	Lower	Upper
82	453858		
128	45.2	34.4	51.6
54	47.7	38.8	58.2



#27
 2,4-Dimethylphenol
 Concen: 5.423 ng
 RT: 7.810 min Scan# 972
 Delta R.T. 0.018 min
 Lab File: BF140911.D
 Acq: 18 Dec 2024 17:38

Tgt Ion	Resp	Lower	Upper
122	13631		
122	100		
107	116.1	92.6	139.0
121	46.0	45.8	68.8

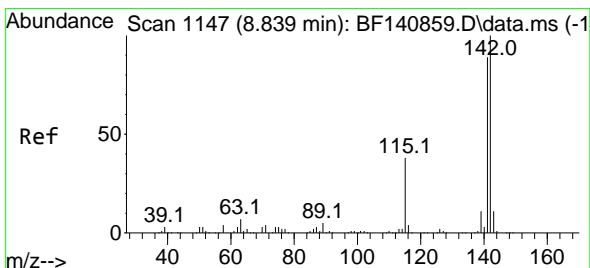
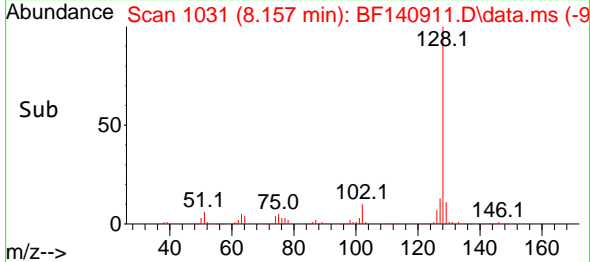
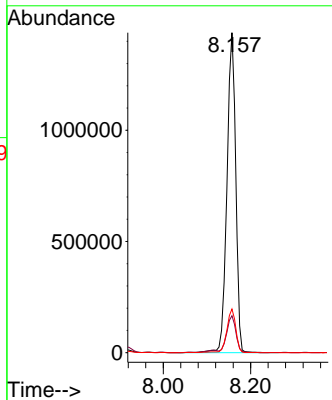
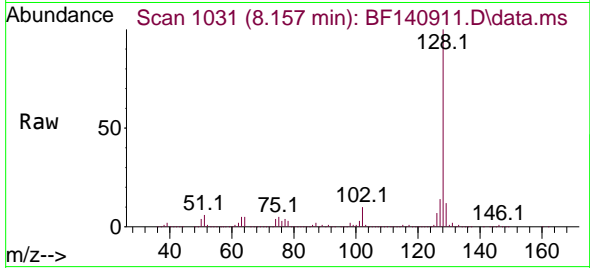




#31
 Naphthalene
 Concen: 160.178 ng
 RT: 8.157 min Scan# 1031
 Delta R.T. 0.006 min
 Lab File: BF140911.D
 Acq: 18 Dec 2024 17:38

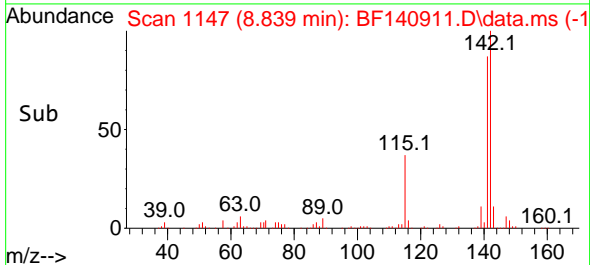
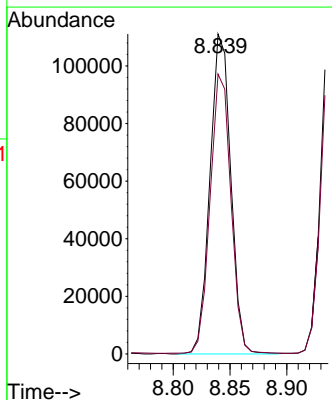
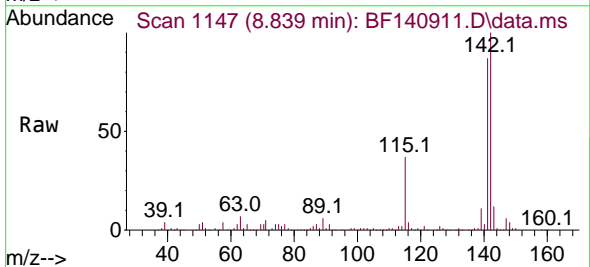
Instrument :
 BNA_F
 ClientSampleId :
 MW3-20241213

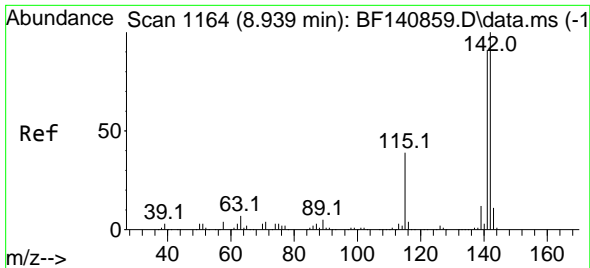
Tgt Ion:128 Resp: 2008075
 Ion Ratio Lower Upper
 128 100
 129 11.5 8.9 13.3
 127 13.6 10.6 16.0



#37
 2-Methylnaphthalene
 Concen: 17.086 ng
 RT: 8.839 min Scan# 1147
 Delta R.T. -0.000 min
 Lab File: BF140911.D
 Acq: 18 Dec 2024 17:38

Tgt Ion:142 Resp: 141691
 Ion Ratio Lower Upper
 142 100
 141 87.4 71.0 106.6





#38
 1-Methylnaphthalene
 Concen: 21.196 ng
 RT: 8.939 min Scan# 1164
 Delta R.T. -0.000 min
 Lab File: BF140911.D
 Acq: 18 Dec 2024 17:38

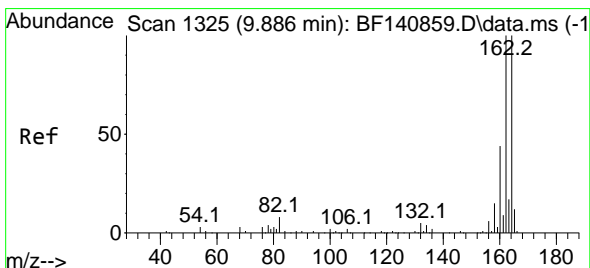
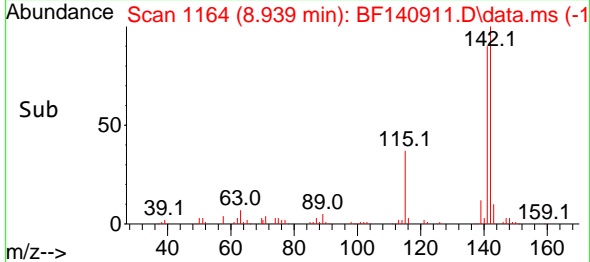
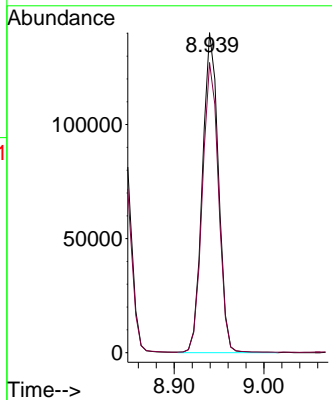
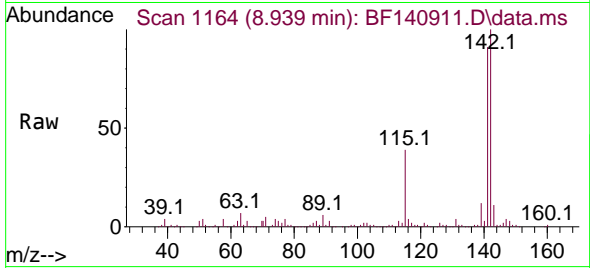
Instrument :

BNA_F

ClientSampleId :

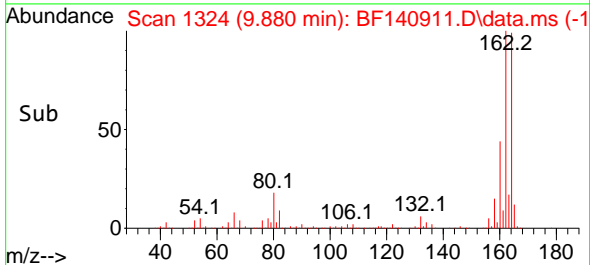
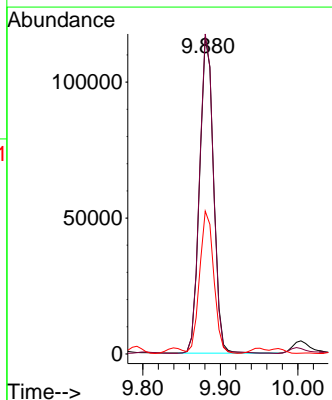
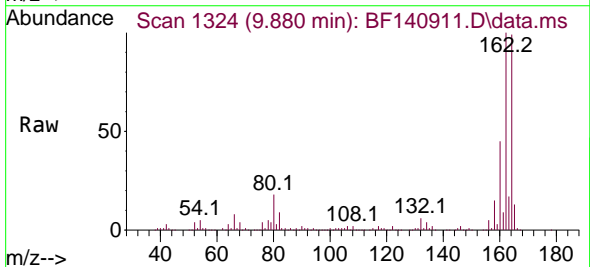
MW3-20241213

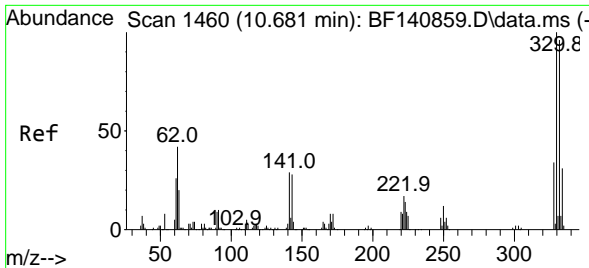
Tgt Ion:142 Resp: 173840
 Ion Ratio Lower Upper
 142 100
 141 90.6 73.4 110.0



#39
 Acenaphthene-d10
 Concen: 20.000 ng
 RT: 9.880 min Scan# 1324
 Delta R.T. -0.006 min
 Lab File: BF140911.D
 Acq: 18 Dec 2024 17:38

Tgt Ion:164 Resp: 145439
 Ion Ratio Lower Upper
 164 100
 162 101.0 79.9 119.9
 160 45.1 35.2 52.8



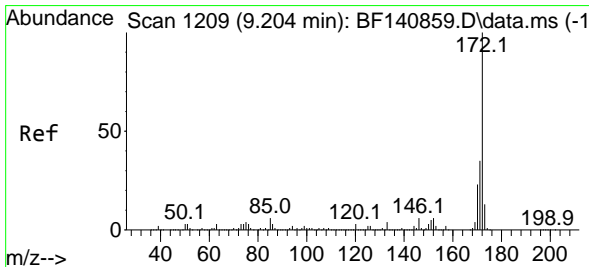
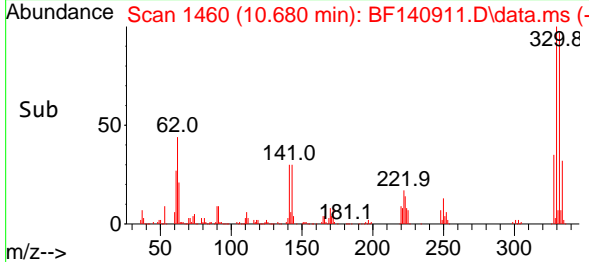
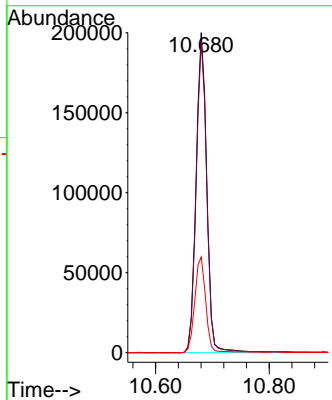
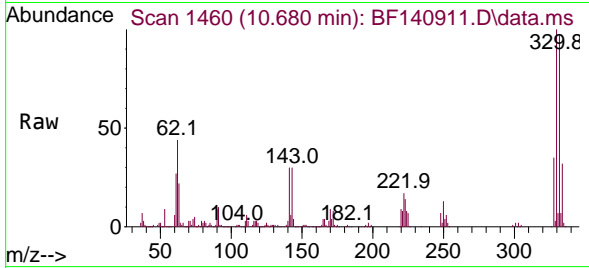


#42
 2,4,6-Tribromophenol
 Concen: 152.941 ng
 RT: 10.680 min Scan# 1460
 Delta R.T. -0.000 min
 Lab File: BF140911.D
 Acq: 18 Dec 2024 17:38

Instrument : BNA_F
 ClientSampleId : MW3-20241213

Tgt Ion:330 Resp: 263079

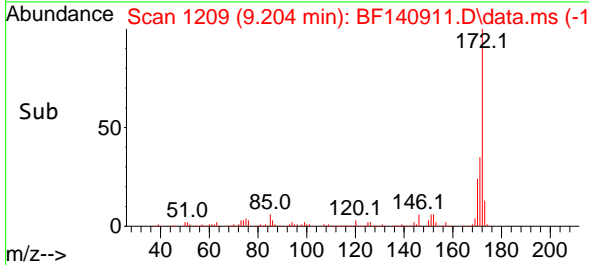
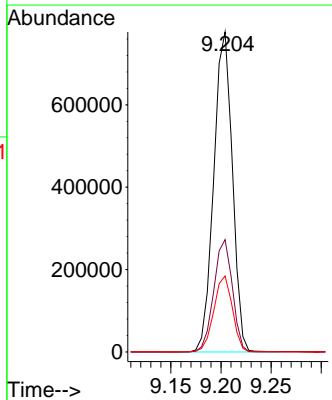
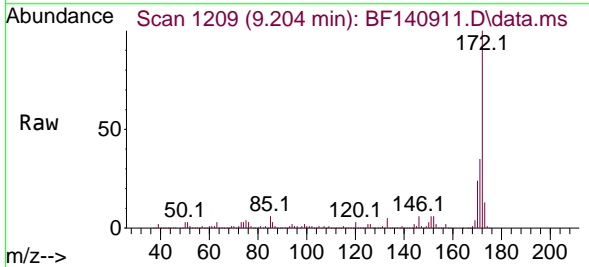
Ion	Ratio	Lower	Upper
330	100		
332	97.3	76.2	114.4
141	31.0	24.9	37.3

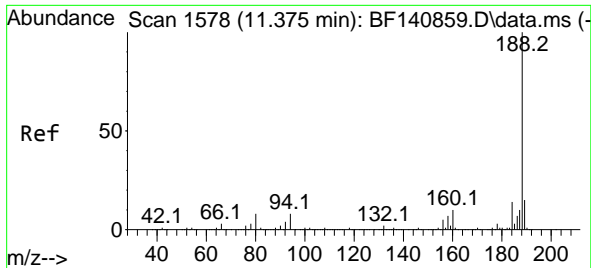


#45
 2-Fluorobiphenyl
 Concen: 94.730 ng
 RT: 9.204 min Scan# 1209
 Delta R.T. -0.000 min
 Lab File: BF140911.D
 Acq: 18 Dec 2024 17:38

Tgt Ion:172 Resp: 1002101

Ion	Ratio	Lower	Upper
172	100		
171	35.1	28.4	42.6
170	23.7	18.6	28.0





#64
 Phenanthrene-d10
 Concen: 20.000 ng
 RT: 11.375 min Scan# 11
 Delta R.T. -0.000 min
 Lab File: BF140911.D
 Acq: 18 Dec 2024 17:38

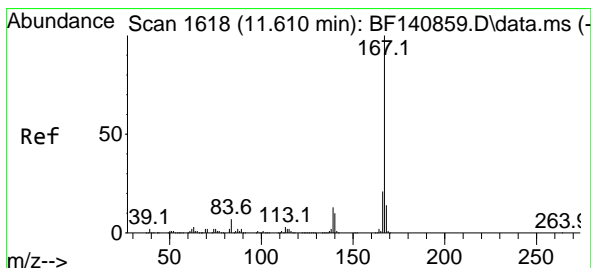
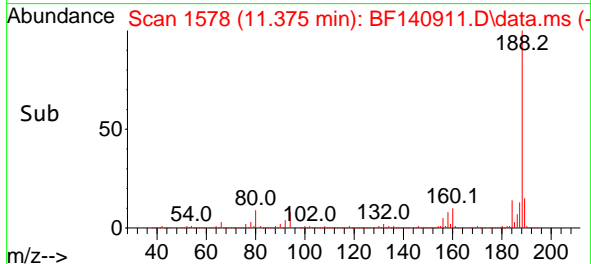
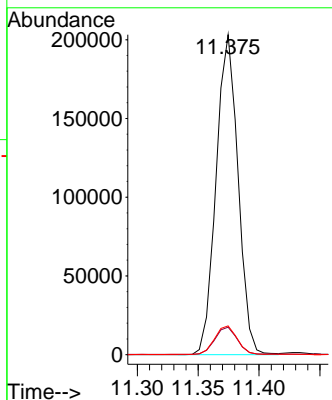
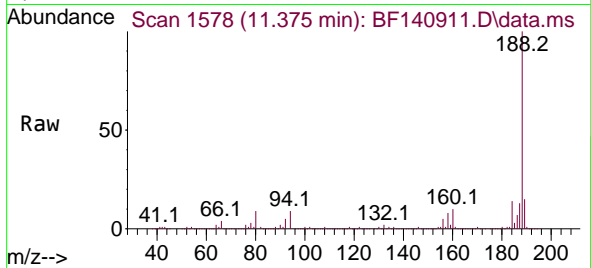
Instrument :

BNA_F

ClientSampleId :

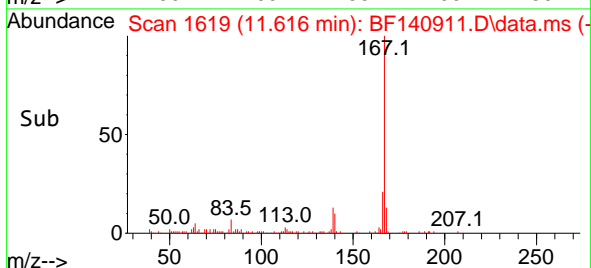
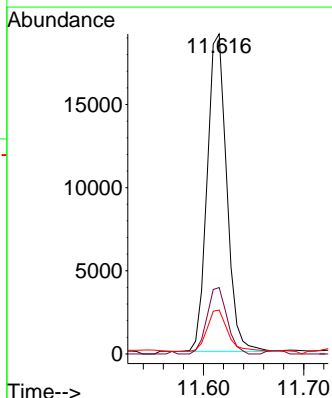
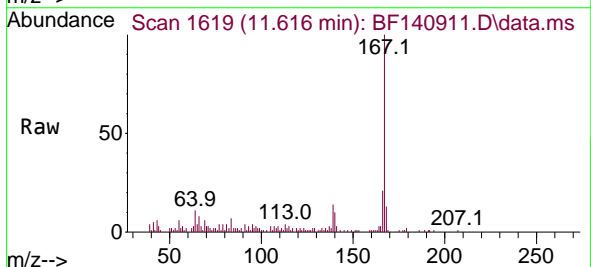
MW3-20241213

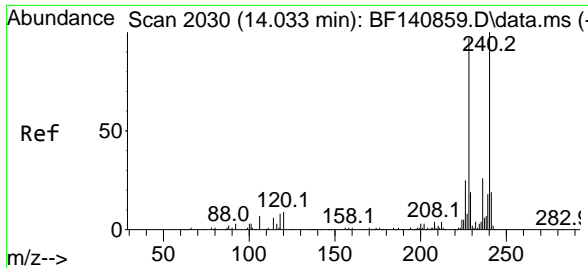
Tgt Ion:188 Resp: 254549
 Ion Ratio Lower Upper
 188 100
 94 8.6 6.4 9.6
 80 9.0 6.8 10.2



#73
 Carbazole
 Concen: 2.046 ng
 RT: 11.616 min Scan# 1619
 Delta R.T. 0.006 min
 Lab File: BF140911.D
 Acq: 18 Dec 2024 17:38

Tgt Ion:167 Resp: 25833
 Ion Ratio Lower Upper
 167 100
 166 20.8 17.0 25.6
 139 13.7 10.2 15.2



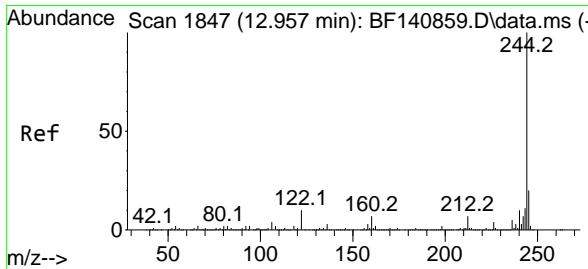
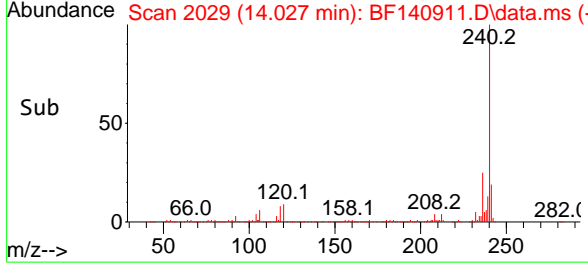
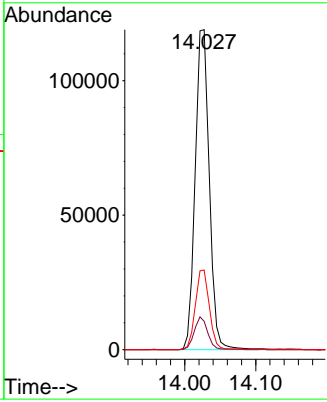
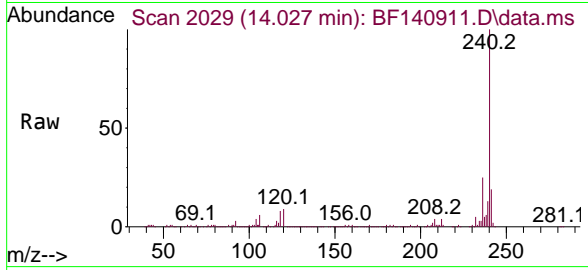


#76
 Chrysene-d12
 Concen: 20.000 ng
 RT: 14.027 min Scan# 2030
 Delta R.T. -0.006 min
 Lab File: BF140911.D
 Acq: 18 Dec 2024 17:38

Instrument : BNA_F
 ClientSampleId : MW3-20241213

Tgt Ion:240 Resp: 165146

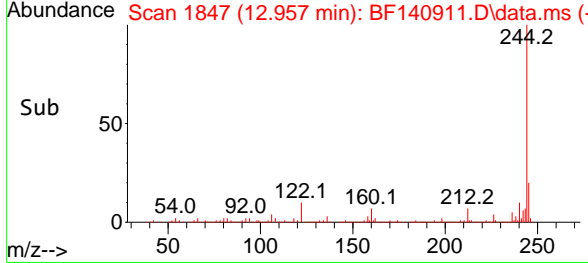
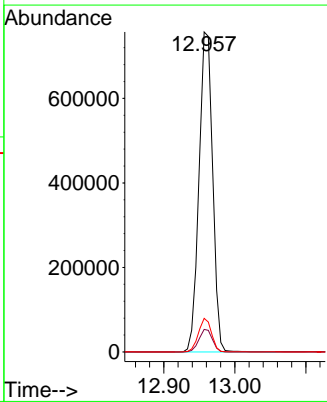
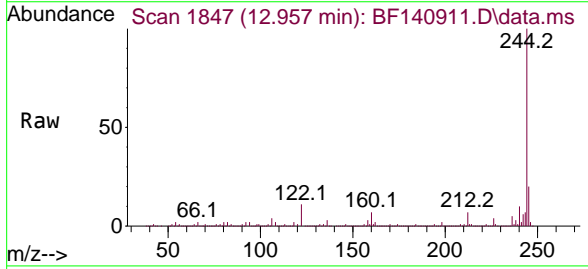
Ion	Ratio	Lower	Upper
240	100		
120	8.9	7.6	11.4
236	24.9	20.5	30.7

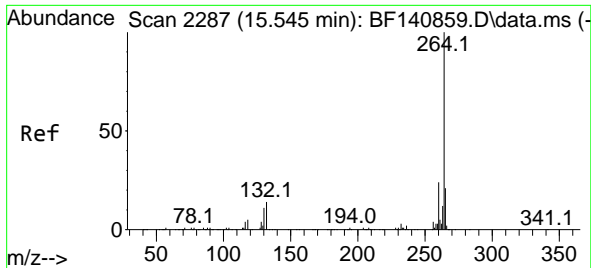


#79
 Terphenyl-d14
 Concen: 97.017 ng
 RT: 12.957 min Scan# 1847
 Delta R.T. -0.000 min
 Lab File: BF140911.D
 Acq: 18 Dec 2024 17:38

Tgt Ion:244 Resp: 1016059

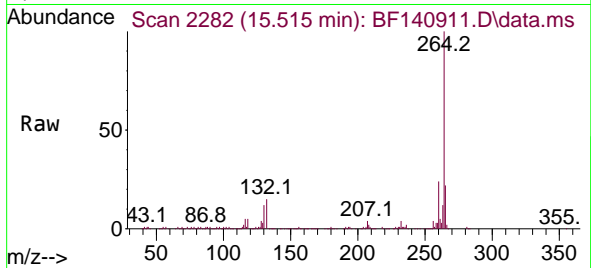
Ion	Ratio	Lower	Upper
244	100		
212	7.1	5.6	8.4
122	10.5	8.2	12.2





#86
 Perylene-d12
 Concen: 20.000 ng
 RT: 15.515 min Scan# 21
 Delta R.T. -0.029 min
 Lab File: BF140911.D
 Acq: 18 Dec 2024 17:38

Instrument :
 BNA_F
 ClientSampleId :
 MW3-20241213



Tgt Ion:264 Resp: 165993
 Ion Ratio Lower Upper
 264 100
 260 24.1 19.1 28.7
 265 21.7 17.0 25.4

