

Method Path : Z:\svoasrv\HPCHEM1\BNA\_F\Methods\  
 Method File : 8270-BF122624.M  
 Title : ASP BNA STANDARDS FOR 5 POINT CALIBRATION  
 Last Update : Fri Dec 27 00:31:16 2024  
 Response Via : Initial Calibration

## Calibration Files

2.5 =BF140970.D 5 =BF140971.D 10 =BF140972.D 20 =BF140973.D 40 =BF140974.D 50 =BF140975.D 60 =BF140976.D 80 =BF140977.D

Compound	2.5	5	10	20	40	50	60	80	Avg	%RSD
1) I 1,4-Dichlorobenzen...	-----ISTD-----									
2) 1,4-Dioxane	0.630	0.621	0.624	0.597	0.587	0.588	0.559	0.601	4.26	
3) Pyridine	1.621	1.563	1.581	1.437	1.394	1.372	1.308	1.468	8.18	
4) n-Nitrosodimet...	0.755	0.738	0.778	0.745	0.742	0.742	0.707	0.744	2.86	
5) S 2-Fluorophenol	1.502	1.422	1.423	1.293	1.258	1.233	1.155	1.327	9.39	
6) Aniline	1.709	1.702	1.732	1.615	1.480	1.306	1.126	1.524	15.28	
7) S Phenol-d6	1.910	1.839	1.811	1.667	1.625	1.613	1.500	1.709	8.60	
8) 2-Chlorophenol	1.556	1.484	1.483	1.386	1.337	1.319	1.227	1.399	8.21	
9) Benzaldehyde		1.193	1.089	0.861	0.792	0.768		0.941	20.16	
10) C Phenol	1.956	1.880	1.866	1.744	1.683	1.694	1.549	1.767	7.97	
11) bis(2-Chloroet...	1.543	1.479	1.449	1.363	1.416	1.380	1.358	1.427	4.77	
12) 1,3-Dichlorobe...	1.736	1.665	1.649	1.516	1.462	1.436	1.342	1.544	9.24	
13) C 1,4-Dichlorobe...	1.749	1.690	1.662	1.517	1.477	1.440	1.359	1.556	9.33	
14) 1,2-Dichlorobe...	1.660	1.589	1.562	1.416	1.366	1.328	1.235	1.451	10.72	
15) Benzyl Alcohol	1.333	1.275	1.298	1.226	1.199	1.172	1.095	1.228	6.63	
16) 2,2'-oxybis(1-...	2.420	2.317	2.313	2.112	2.048	2.016	1.882	2.158	9.04	
17) 2-Methylphenol	1.250	1.208	1.226	1.151	1.125	1.109	1.066	1.162	5.83	
18) Hexachloroethane	0.587	0.573	0.584	0.544	0.538	0.537	0.508	0.553	5.30	
19) P n-Nitroso-di-n...	1.133	1.140	1.127	1.079	1.008	0.988	0.983	0.918	1.047	8.01
20) 3+4-Methylphenols	1.644	1.624	1.598	1.452	1.387	1.354	1.235	1.471	10.61	
21) I Naphthalene-d8	-----ISTD-----									
22) Acetophenone	0.575	0.535	0.521	0.470	0.459	0.454	0.421	0.491	11.02	
23) S Nitrobenzene-d5	0.244	0.277	0.321	0.327	0.338	0.349	0.333	0.313	12.18	
24) Nitrobenzene	0.288	0.319	0.364	0.367	0.371	0.379	0.358	0.349	9.54	
25) Isophorone	0.744	0.706	0.714	0.657	0.654	0.659	0.628	0.680	6.09	
26) C 2-Nitrophenol	0.067	0.080	0.107	0.127	0.142	0.151	0.152	0.118	29.26	
27) 2,4-Dimethylph...	0.268	0.255	0.260	0.241	0.241	0.244	0.230	0.249	5.21	
28) bis(2-Chloroet...	0.477	0.462	0.462	0.415	0.412	0.405	0.384	0.431	8.27	
29) C 2,4-Dichloroph...	0.286	0.289	0.295	0.278	0.281	0.281	0.264	0.282	3.41	
30) 1,2,4-Trichlor...	0.354	0.335	0.337	0.312	0.304	0.306	0.286	0.319	7.39	
31) Naphthalene	1.209	1.154	1.142	1.020	0.989	0.971	0.892	1.054	10.96	
32) Benzoic acid		0.099	0.152	0.178	0.198	0.221	0.222	0.178	26.55	
33) 4-Chloroaniline	0.414	0.398	0.404	0.367	0.368	0.367	0.351	0.381	6.20	
34) C Hexachlorobuta...	0.208	0.199	0.196	0.182	0.181	0.182	0.170	0.188	7.08	
35) Caprolactam	0.098	0.095	0.100	0.094	0.094	0.095	0.094	0.096	2.37	
36) C 4-Chloro-3-met...	0.330	0.320	0.327	0.309	0.304	0.309	0.293	0.313	4.24	
37) 2-Methylnaphth...	0.772	0.740	0.732	0.642	0.629	0.623	0.581	0.674	10.77	
38) 1-Methylnaphth...	0.767	0.722	0.710	0.635	0.618	0.615	0.571	0.663	10.71	

Method Path : Z:\svoasrv\HPCHEM1\BNA\_F\Methods\  
 Method File : 8270-BF122624.M

39) I	Acenaphthene-d10	-----ISTD-----									
40)	1,2,4,5-Tetrac...	0.602	0.586	0.586	0.535	0.527	0.526	0.491	0.550	7.46	
41) P	Hexachlorocycl...	0.165	0.176	0.189	0.187	0.189	0.190	0.180	0.182	5.03	
42) S	2,4,6-Tribromo...	0.177	0.189	0.203	0.196	0.198	0.199	0.199	0.194	4.59	
43) C	2,4,6-Trichlor...	0.354	0.356	0.398	0.364	0.356	0.381	0.354	0.366	4.59	
44)	2,4,5-Trichlor...	0.371	0.389	0.377	0.380	0.386	0.365	0.355	0.375	3.15	
45) S	2-Fluorobiphenyl	1.546	1.452	1.378	1.175	1.129	1.102	1.006	1.255	16.12	
46)	1,1'-Biphenyl	1.776	1.696	1.651	1.479	1.421	1.406	1.291	1.531	11.60	
47)	2-Chloronaphth...	1.362	1.293	1.270	1.140	1.115	1.104	1.031	1.188	10.15	
48)	2-Nitroaniline	0.139	0.182	0.248	0.288	0.306	0.329	0.325	0.259	28.48	
49)	Acenaphthylene	1.934	1.869	1.824	1.654	1.619	1.590	1.477	1.710	9.80	
50)	Dimethylphthalate	1.438	1.414	1.389	1.285	1.246	1.251	1.186	1.316	7.39	
51)	2,6-Dinitrotol...	0.128	0.173	0.233	0.256	0.269	0.279	0.276	0.231	25.17	
52) C	Acenaphthene	1.289	1.240	1.229	1.119	1.096	1.091	1.027	1.156	8.36	
53)	3-Nitroaniline	0.153	0.197	0.260	0.281	0.289	0.304	0.299	0.255	22.59	
54) P	2,4-Dinitrophenol		0.037	0.053	0.072	0.086	0.098	0.105	0.075	35.03	
55)	Dibenzofuran	1.857	1.780	1.743	1.565	1.523	1.513	1.389	1.624	10.47	
56) P	4-Nitrophenol		0.166	0.213	0.229	0.237	0.253	0.251	0.225	14.45	
57)	2,4-Dinitrotol...	0.136	0.187	0.265	0.310	0.326	0.347	0.340	0.273	30.14	
58)	Fluorene	1.497	1.432	1.351	1.192	1.146	1.135	1.065	1.260	13.19	
59)	2,3,4,6-Tetrac...	0.303	0.303	0.327	0.314	0.307	0.316	0.302	0.310	3.01	
60)	Diethylphthalate	1.433	1.386	1.369	1.266	1.230	1.232	1.175	1.299	7.47	
61)	4-Chlorophenyl...	0.700	0.673	0.653	0.579	0.560	0.557	0.521	0.606	11.29	
62)	4-Nitroaniline	0.156	0.203	0.257	0.278	0.290	0.301	0.301	0.255	21.73	
63)	Azobenzene	1.502	1.465	1.448	1.319	1.295	1.293	1.220	1.363	7.85	
64) I	Phenanthrene-d10	-----ISTD-----									
65)	4,6-Dinitro-2-...		0.033	0.051	0.066	0.078	0.085	0.089	0.067	32.70	
66) c	n-Nitrosodiphe...	0.712	0.675	0.668	0.605	0.594	0.595	0.558	0.630	8.83	
67)	4-Bromophenyl-...	0.235	0.229	0.228	0.213	0.212	0.199	0.197	0.216	7.03	
68)	Hexachlorobenzene	0.261	0.247	0.249	0.232	0.231	0.229	0.220	0.238	5.96	
69)	Atrazine	0.218	0.205	0.189	0.156	0.147	0.140		0.176	18.49	
70) C	Pentachlorophenol	0.122	0.137	0.154	0.155	0.156	0.161	0.154	0.148	9.37	
71)	Phenanthrene	1.221	1.168	1.129	1.005	0.982	0.958	0.907	1.053	11.29	
72)	Anthracene	1.187	1.136	1.113	0.991	0.963	0.945	0.884	1.031	11.01	
73)	Carbazole	1.138	1.093	1.076	0.947	0.923	0.907	0.857	0.992	10.97	
74)	Di-n-butylphth...	1.248	1.238	1.237	1.083	1.054	1.044	0.990	1.128	9.70	
75) C	Fluoranthene	1.333	1.274	1.242	1.091	1.050	1.035	0.966	1.142	12.26	
76) I	Chrysene-d12	-----ISTD-----									
77)	Benzidine	0.422	0.333	0.437	0.415	0.438	0.512	0.402	0.423	12.62	
78)	Pyrene	1.754	1.670	1.701	1.692	1.783	1.841	1.803	1.749	3.63	
79) S	Terphenyl-d14	1.275	1.181	1.188	1.141	1.194	1.240	1.209	1.204	3.59	
80)	Butylbenzylph...	0.532	0.571	0.640	0.656	0.684	0.710	0.679	0.639	10.11	
81)	Benzo(a)anthra...	1.573	1.452	1.437	1.369	1.340	1.335	1.251	1.394	7.44	
82)	3,3'-Dichlorob...	0.474	0.455	0.455	0.403	0.382	0.386	0.377	0.419	9.76	
83)	Chrysene	1.341	1.330	1.327	1.208	1.194	1.207	1.190	1.257	5.68	
84)	Bis(2-ethylhex...	0.822	0.842	0.859	0.820	0.827	0.837	0.793	0.828	2.49	
85) c	Di-n-octyl pht...	1.157	1.231	1.253	1.199	1.170	1.193	1.191	1.199	2.76	

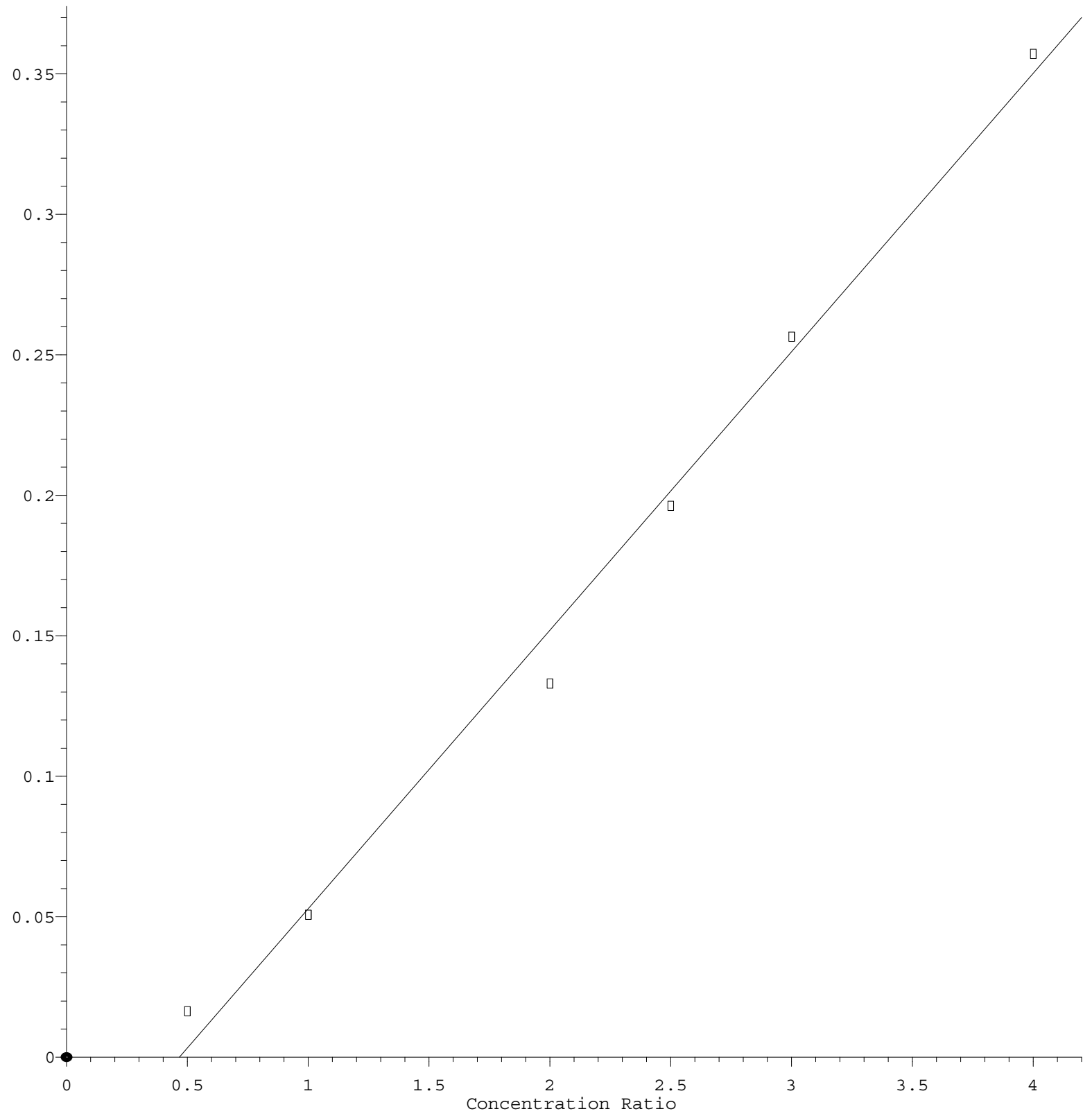
Method Path : Z:\svoasrv\HPCHEM1\BNA\_F\Methods\  
Method File : 8270-BF122624.M

		-----ISTD-----									
86) I	Perylene-d12										
87)	Indeno(1,2,3-c...	1.050	1.009	1.224	1.311	1.397	1.438	1.391	1.260	13.71	
88)	Benzo(b)fluora...	1.360	1.564	1.479	1.417	1.306	1.362	1.275	1.395	7.20	
89)	Benzo(k)fluora...	1.165	1.121	1.301	1.065	1.073	1.016	0.911	1.093	11.17	
90) C	Benzo(a)pyrene	1.146	1.108	1.137	1.069	1.047	1.065	1.007	1.083	4.63	
91)	Dibenzo(a,h)an...	0.847	0.829	0.992	1.070	1.127	1.165	1.120	1.021	13.38	
92)	Benzo(g,h,i)pe...	0.825	0.811	1.023	1.126	1.194	1.243	1.194	1.059	16.91	

-----  
(#) = Out of Range

4,6-Dinitro-2-methylphenol

Response Ratio



Response = 9.902e-002 \* Amt - 4.626e-002

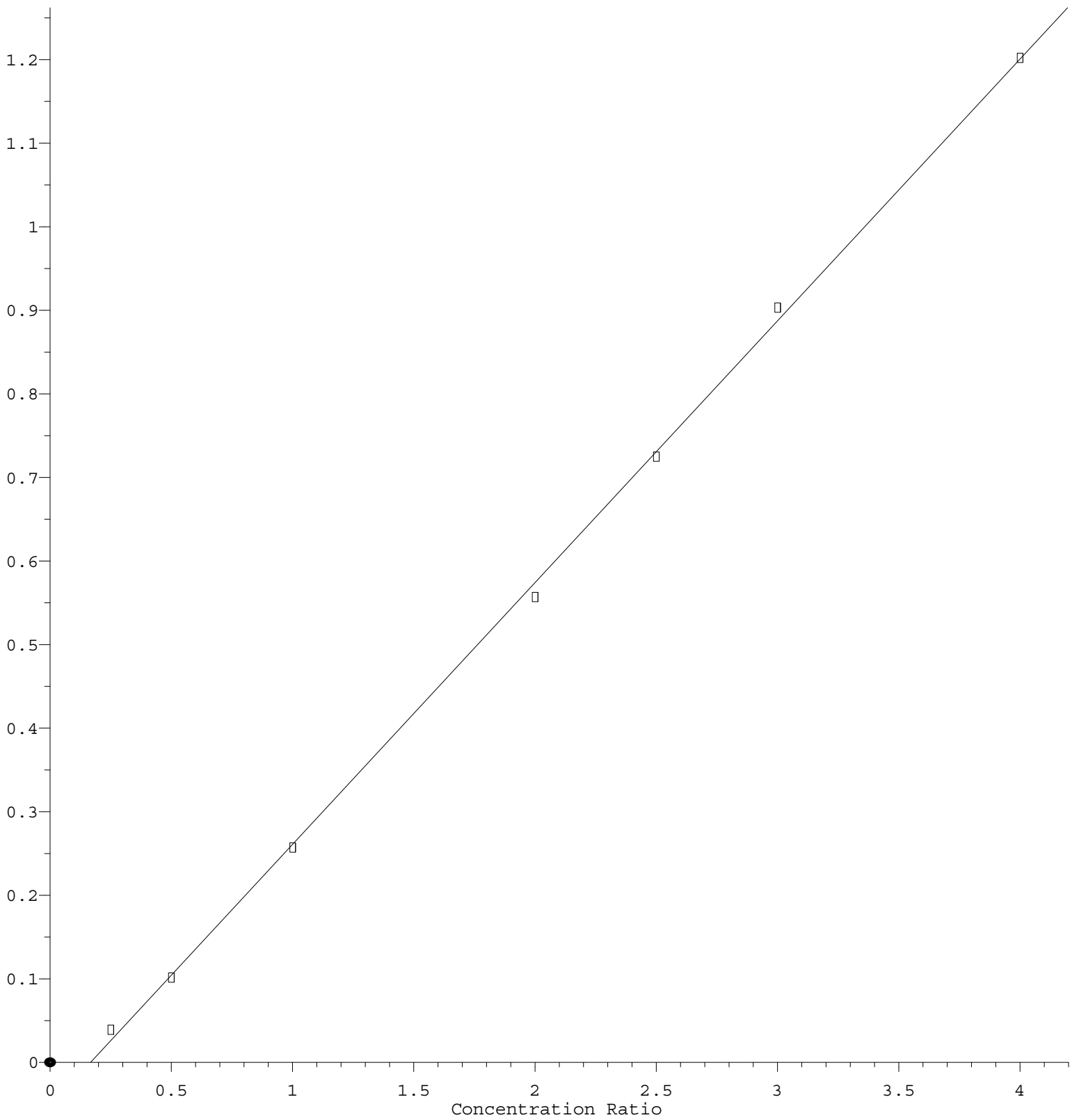
Coef of Det (r^2) = 0.992245 Curve Fit: Linear

Method Name: Z:\svoasrv\HPCHEM1\BNA F\Methods\8270-BF122624.M

Calibration Table Last Updated: Fri Dec 27 00:31:16 2024

4-Nitroaniline

Response Ratio



Response = 3.133e-001 \* Amt - 5.242e-002

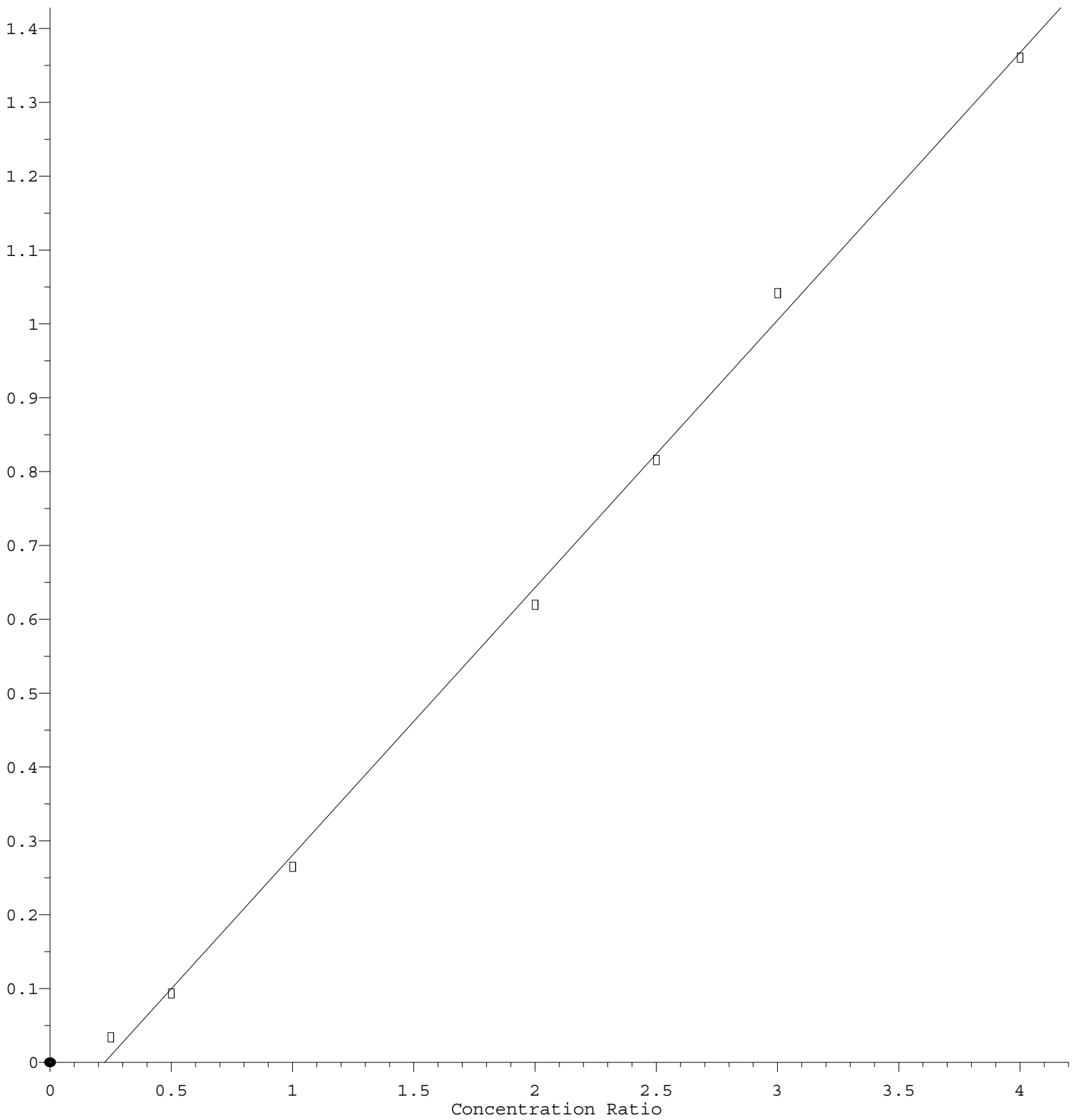
Coef of Det (r^2) = 0.999312 Curve Fit: Linear

Method Name: Z:\svoasrv\HPCHEM1\BNA F\Methods\8270-BF122624.M

Calibration Table Last Updated: Fri Dec 27 00:31:16 2024

2,4-Dinitrotoluene

Response Ratio



Response = 3.623e-001 \* Amt - 8.150e-002

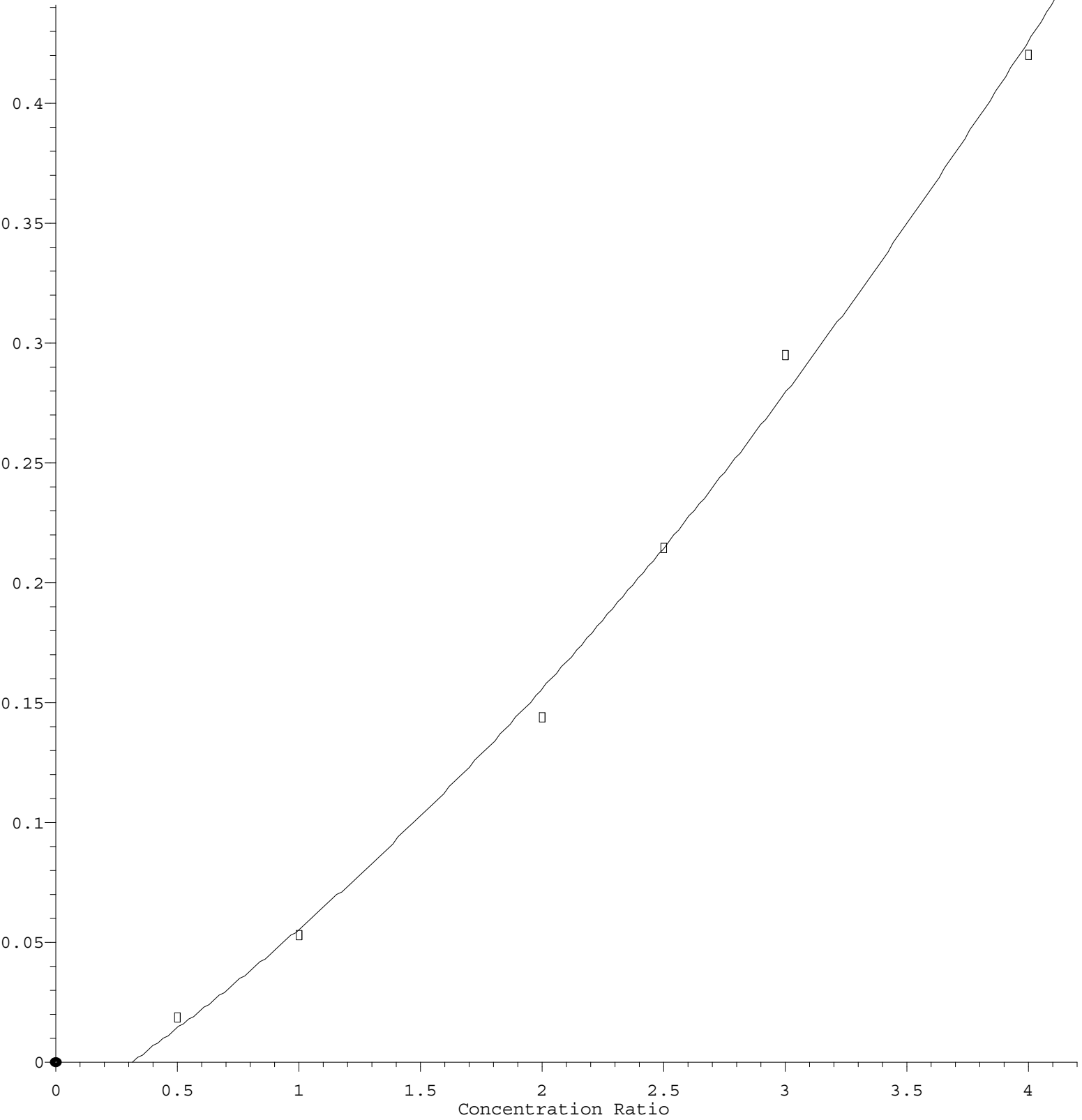
Coef of Det (r^2) = 0.998082 Curve Fit: Linear

Method Name: Z:\svoasrv\HPCHEM1\BNA F\Methods\8270-BF122624.M

Calibration Table Last Updated: Fri Dec 27 00:31:16 2024

2,4-Dinitrophenol

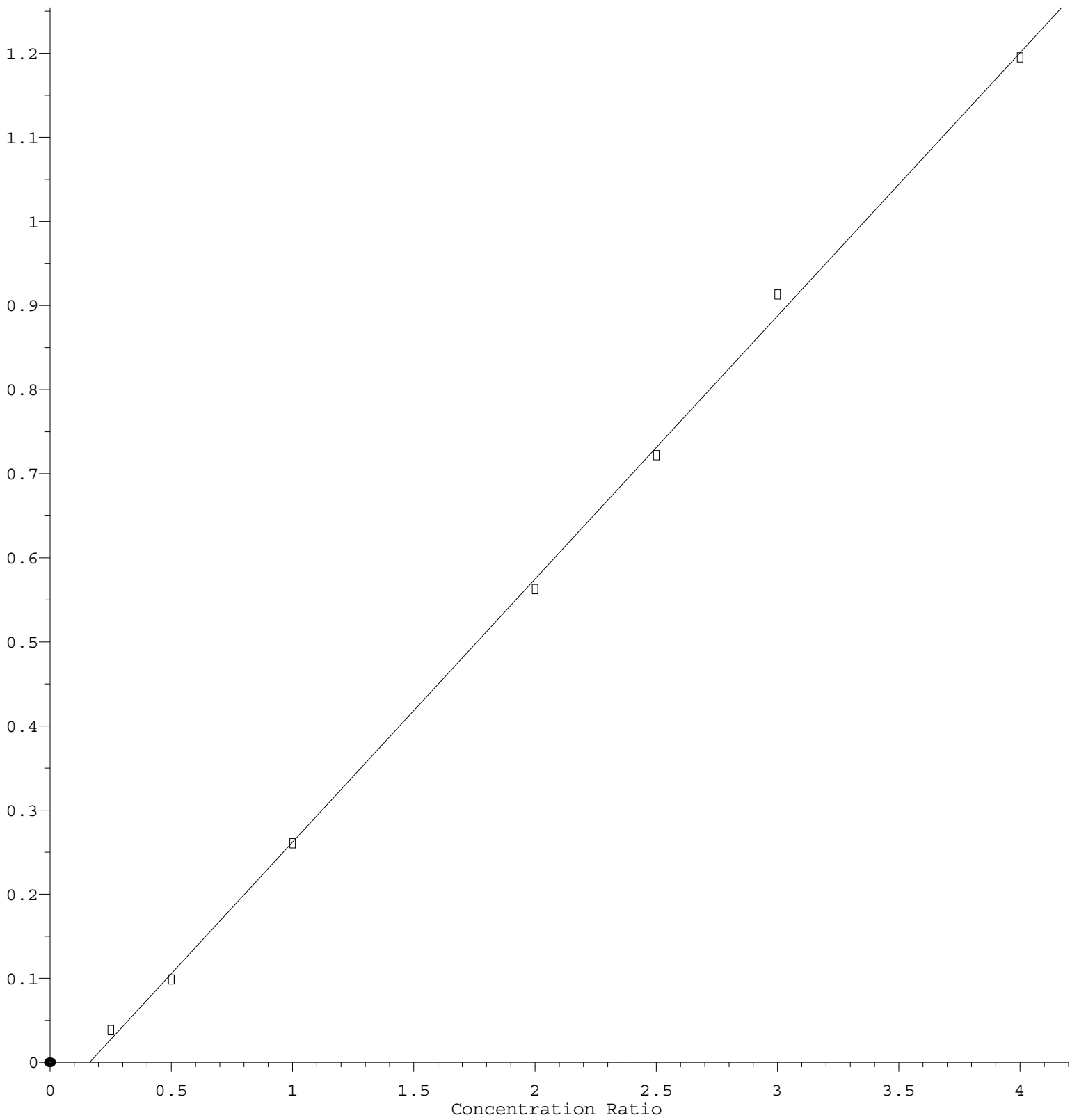
Response Ratio



R = 1.166e-002 A\*A + 6.517e-002 A - 2.128e-002  
Coef of Det (r^2) = 0.996078 Curve Fit: Quadratic  
Method Name: Z:\svoasrv\HPCHEM1\BNA F\Methods\8270-BF122624.M  
Calibration Table Last Updated: Fri Dec 27 00:31:16 2024

# 3-Nitroaniline

Response Ratio



$$\text{Response} = 3.131\text{e-}001 * \text{Amt} - 5.110\text{e-}002$$

Coef of Det ( $r^2$ ) = 0.999042 Curve Fit: Linear

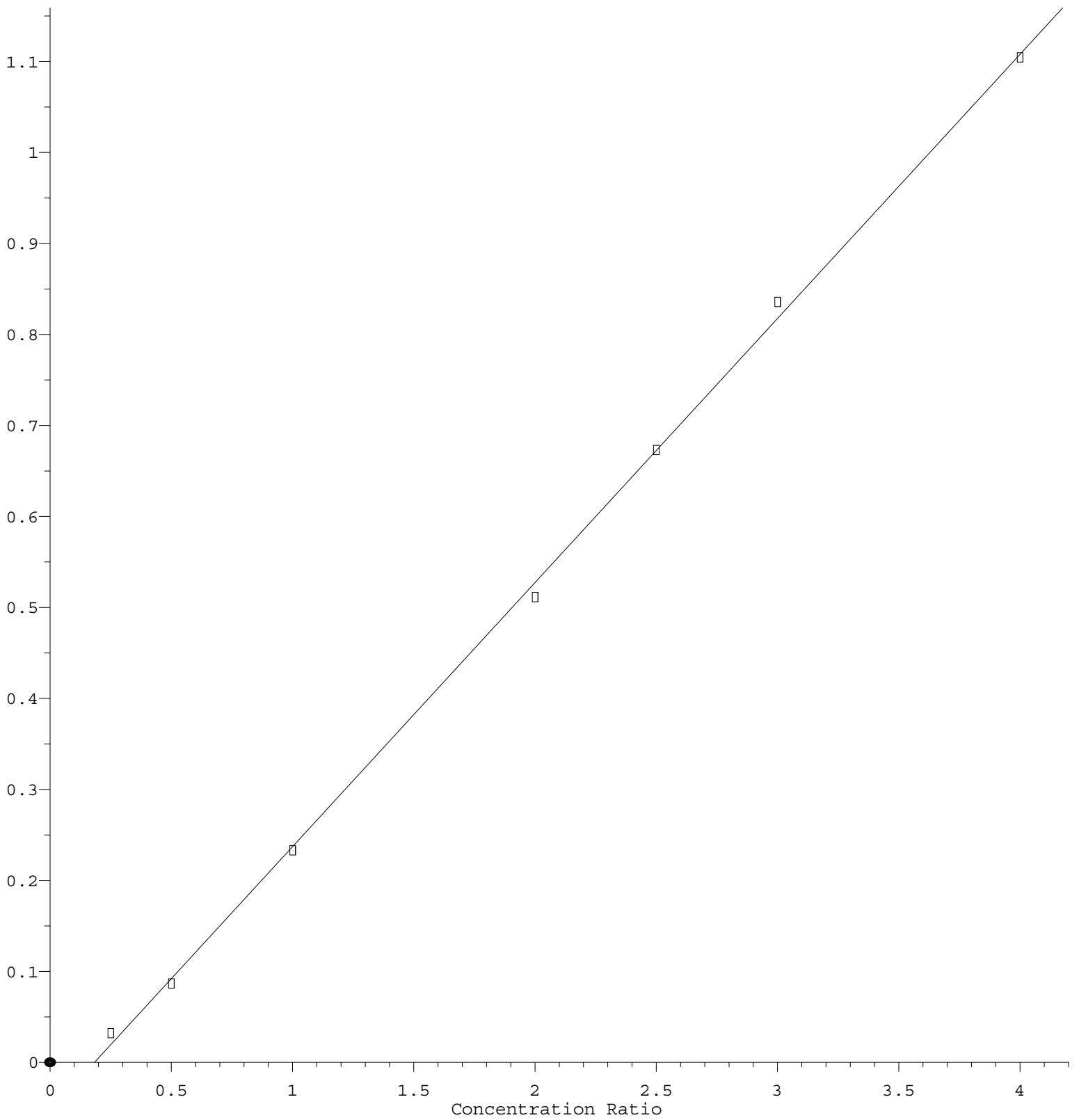
Method Name: Z:\svoasrv\HPCHEM1\BNA F\Methods\8270-BF122624.M

Calibration Table Last Updated: Fri Dec 27 00:31:16 2024



2,6-Dinitrotoluene

Response Ratio



Response = 2.904e-001 \* Amt - 5.306e-002

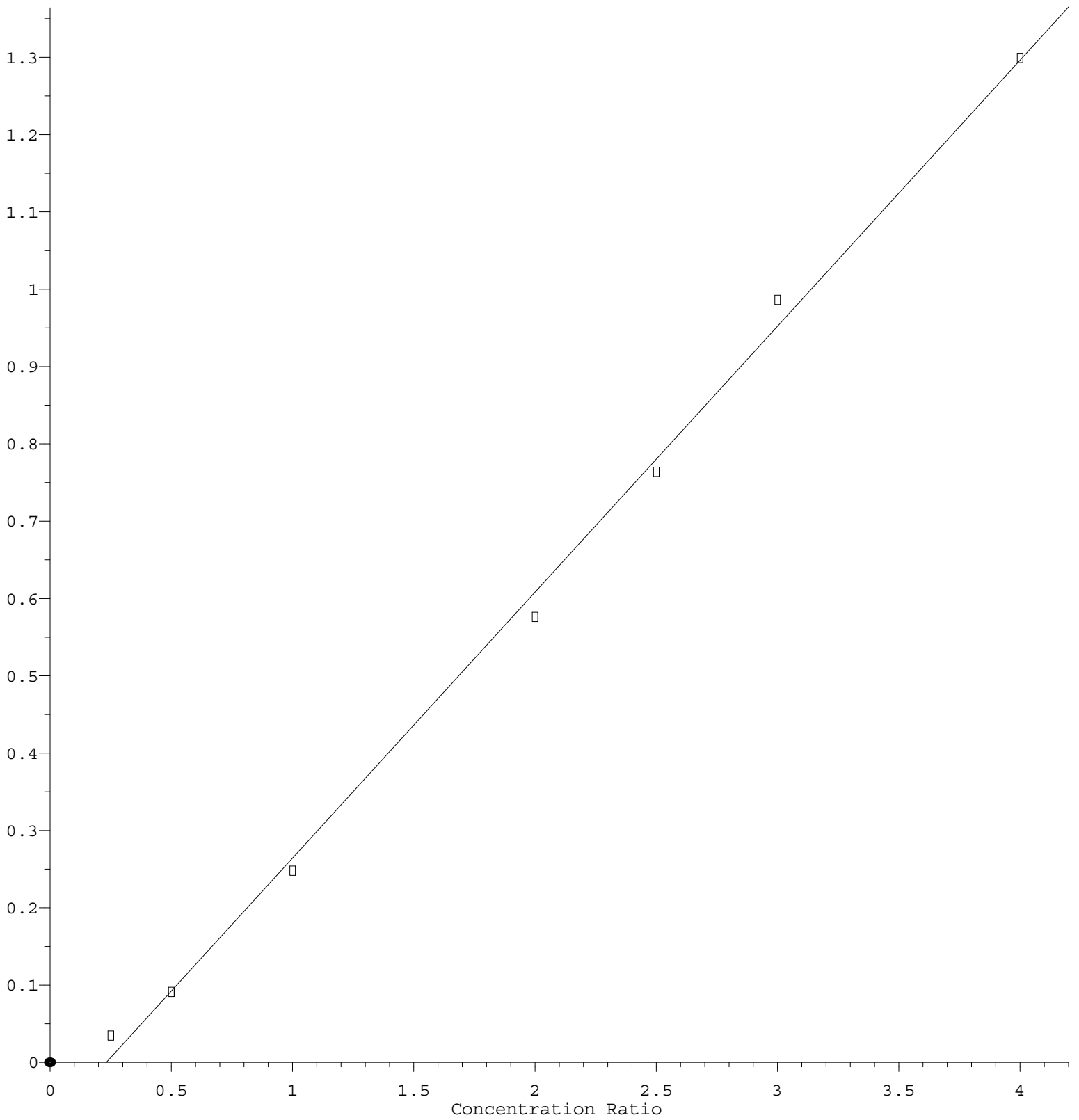
Coef of Det (r^2) = 0.999176 Curve Fit: Linear

Method Name: Z:\svoasrv\HPCHEM1\BNA F\Methods\8270-BF122624.M

Calibration Table Last Updated: Fri Dec 27 00:31:16 2024

# 2-Nitroaniline

Response Ratio



$$\text{Response} = 3.440\text{e-}001 * \text{Amt} - 7.987\text{e-}002$$

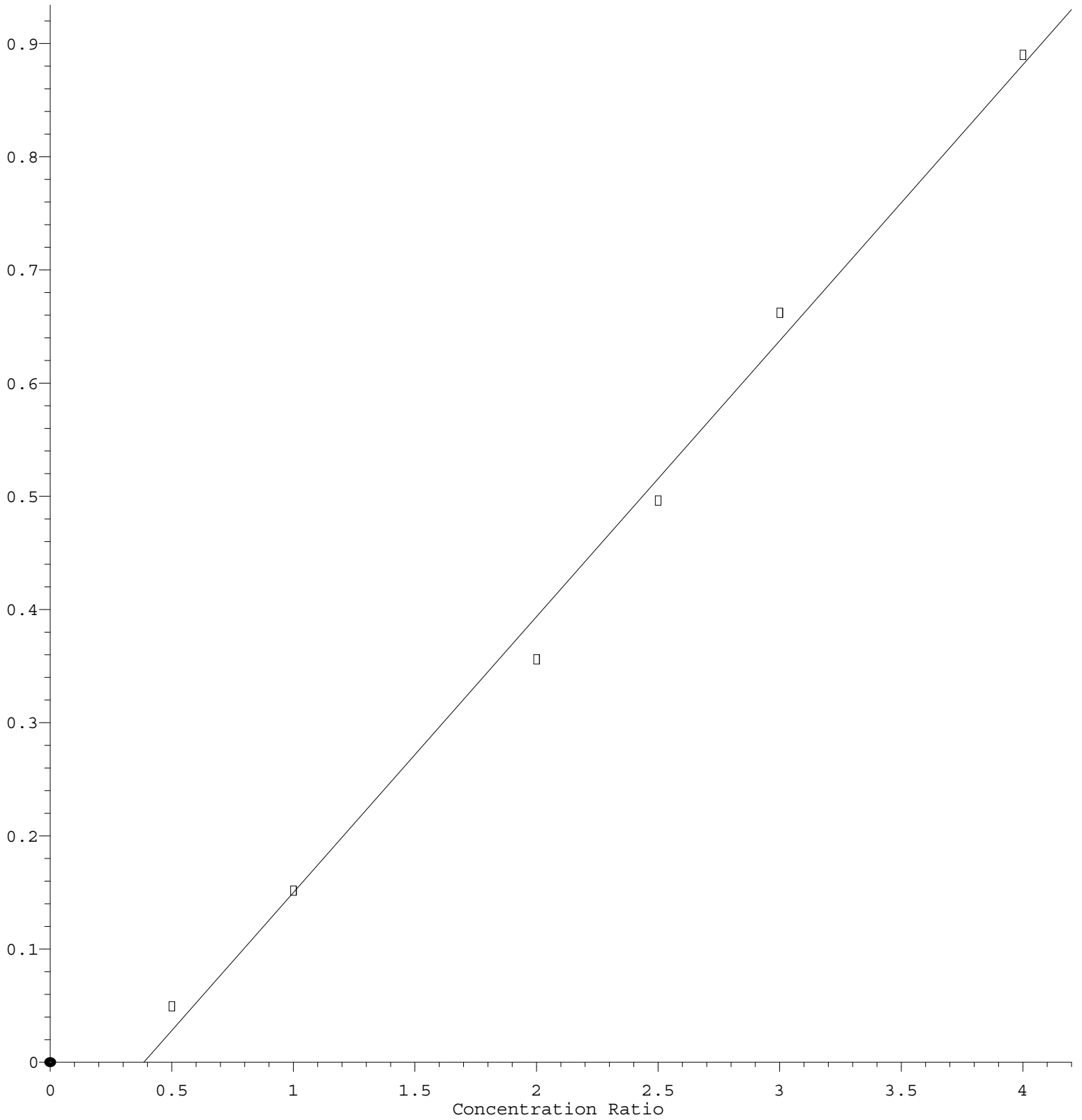
Coef of Det (r<sup>2</sup>) = 0.997398 Curve Fit: Linear

Method Name: Z:\svoasrv\HPCHEM1\BNA F\Methods\8270-BF122624.M

Calibration Table Last Updated: Fri Dec 27 00:31:16 2024

# Benzoic acid

Response Ratio



$$\text{Response} = 2.436e-001 * \text{Amt} - 9.371e-002$$

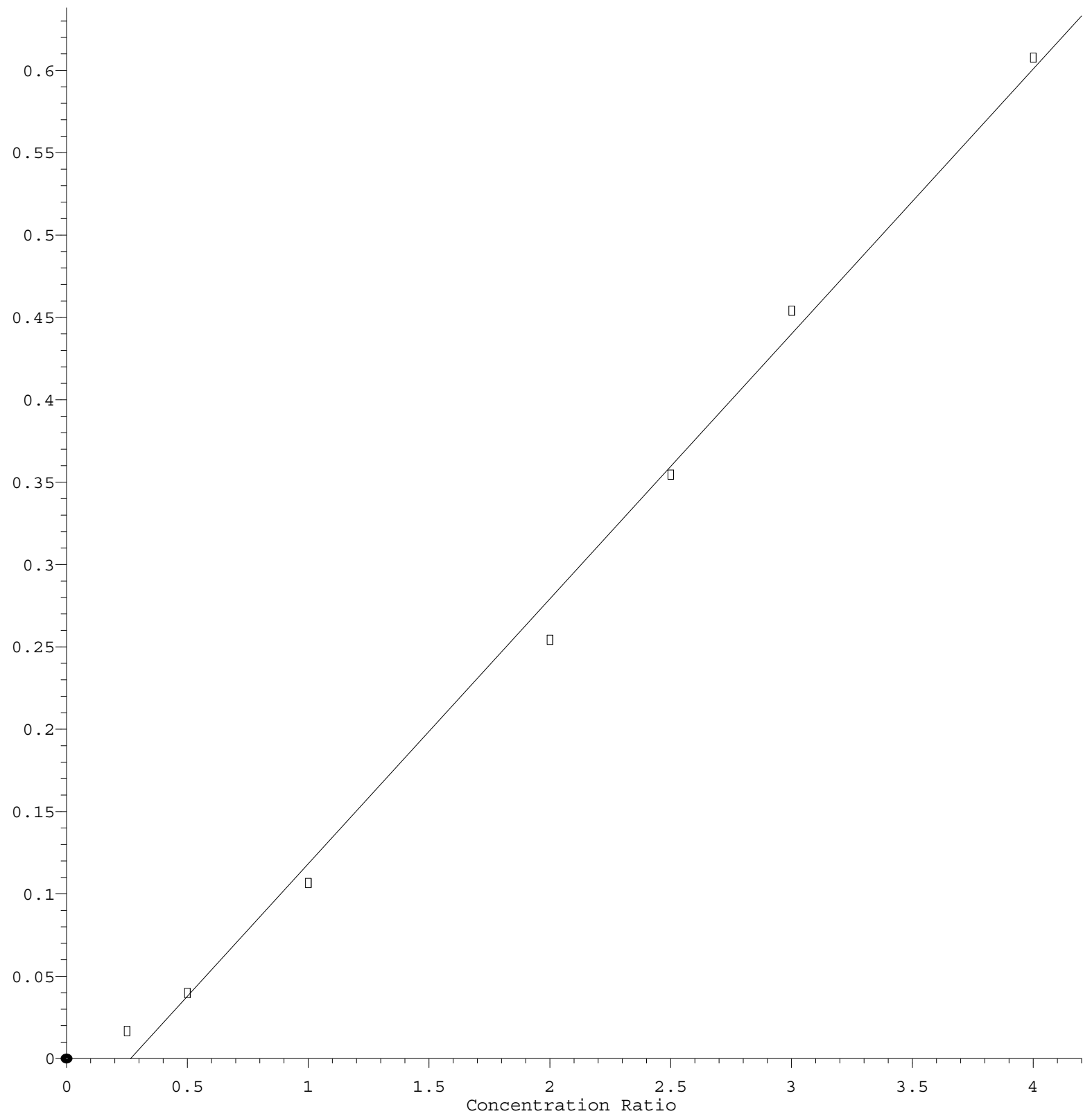
Coef of Det ( $r^2$ ) = 0.994097 Curve Fit: Linear

Method Name: Z:\svoasrv\HPCHEM1\BNA F\Methods\8270-BF122624.M

Calibration Table Last Updated: Fri Dec 27 00:31:16 2024

2-Nitrophenol

Response Ratio



Response = 1.609e-001 \* Amt - 4.266e-002

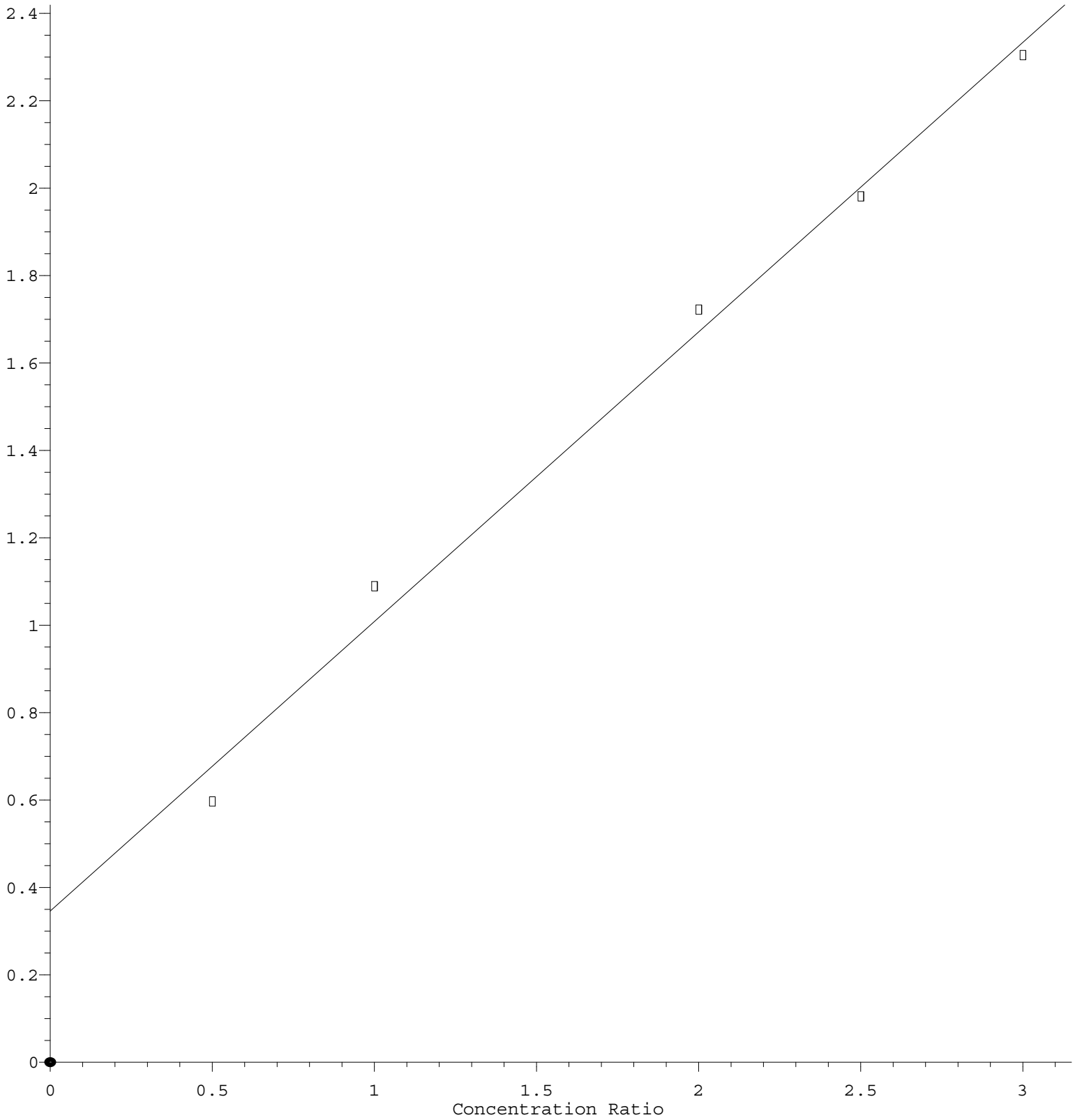
Coef of Det (r^2) = 0.995332 Curve Fit: Linear

Method Name: Z:\svoasrv\HPCHEM1\BNA F\Methods\8270-BF122624.M

Calibration Table Last Updated: Fri Dec 27 00:31:16 2024

# Benzaldehyde

Response Ratio



$$\text{Response} = 6.627\text{e-}001 * \text{Amt} + 3.457\text{e-}001$$

Coef of Det (r^2) = 0.991129 Curve Fit: Linear

Method Name: Z:\svoasrv\HPCHEM1\BNA F\Methods\8270-BF122624.M

Calibration Table Last Updated: Fri Dec 27 00:31:16 2024