

Data Path : Z:\svoasrv\HPCHEM1\BNA_F\Data\BF122624\
 Data File : BF140971.D
 Acq On : 26 Dec 2024 16:49
 Operator : RC/JU
 Sample : SSTDICC005
 Misc :
 ALS Vial : 3 Sample Multiplier: 1

Instrument :
 BNA_F
 ClientSampleId :
 SSTDICC005

Quant Time: Dec 27 00:16:30 2024
 Quant Method : Z:\svoasrv\HPCHEM1\BNA_F\Methods\8270-BF122624.M
 Quant Title : ASP BNA STANDARDS FOR 5 POINT CALIBRATION
 QLast Update : Fri Dec 27 00:11:18 2024
 Response via : Initial Calibration

Compound	R.T.	QIon	Response	Conc	Units	Dev(Min)
Internal Standards						
1) 1,4-Dichlorobenzene-d4	6.828	152	244397	20.000	ng	0.00
21) Naphthalene-d8	8.110	136	981263	20.000	ng	0.00
39) Acenaphthene-d10	9.857	164	532506	20.000	ng	0.00
64) Phenanthrene-d10	11.345	188	938555	20.000	ng	0.00
76) Chrysene-d12	13.980	240	749775	20.000	ng	0.00
86) Perylene-d12	15.445	264	730672	20.000	ng	0.00
System Monitoring Compounds						
5) 2-Fluorophenol	5.428	112	183577	11.323	ng	0.00
7) Phenol-d6	6.434	99	233457	11.178	ng	-0.02
23) Nitrobenzene-d5	7.381	82	119635	7.800	ng	-0.01
42) 2,4,6-Tribromophenol	10.639	330	47007	9.085	ng	-0.01
45) 2-Fluorobiphenyl	9.181	172	411497	12.312	ng	0.00
79) Terphenyl-d14	12.927	244	477948	10.588	ng	0.00
Target Compounds						
2) 1,4-Dioxane	2.563	88	38472	5.241	ng	97
3) Pyridine	3.310	79	99046	5.521	ng	97
4) n-Nitrosodimethylamine	3.234	42	46147	5.077	ng	# 96
6) Aniline	6.487	93	104416	5.605	ng	98
8) 2-Chlorophenol	6.604	128	95096	5.563	ng	97
10) Phenol	6.451	94	119516	5.534	ng	96
11) bis(2-Chloroethyl)ether	6.557	93	94288	5.412	ng	98
12) 1,3-Dichlorobenzene	6.769	146	106038	5.621	ng	99
13) 1,4-Dichlorobenzene	6.845	146	106890	5.621	ng	98
14) 1,2-Dichlorobenzene	6.998	146	101438	5.721	ng	97
15) Benzyl Alcohol	6.957	79	81438	5.426	ng	100
16) 2,2'-oxybis(1-Chloropr...	7.104	45	147834	5.606	ng	99
17) 2-Methylphenol	7.063	107	76369	5.378	ng	100
18) Hexachloroethane	7.340	117	35891	5.313	ng	95
19) n-Nitroso-di-n-propyla...	7.228	70	69676	5.445	ng	97
20) 3+4-Methylphenols	7.216	107	100457	5.590	ng	93
22) Acetophenone	7.228	105	140966	5.856	ng	99
24) Nitrobenzene	7.398	77	70606	4.120	ng	97
25) Isophorone	7.640	82	182478	5.467	ng	98
26) 2-Nitrophenol	7.722	139	16400	7.379	ng	96
27) 2,4-Dimethylphenol	7.751	122	65753	5.391	ng	98
28) bis(2-Chloroethoxy)met...	7.857	93	117023	5.534	ng	97
29) 2,4-Dichlorophenol	7.957	162	70187	5.074	ng	100
30) 1,2,4-Trichlorobenzene	8.051	180	86885	5.549	ng	99
31) Naphthalene	8.128	128	296471	5.734	ng	98
33) 4-Chloroaniline	8.175	127	101675	5.435	ng	98
34) Hexachlorobutadiene	8.251	225	51022	5.527	ng	98
35) Caprolactam	8.492	113	23997	5.102	ng	97
36) 4-Chloro-3-methylphenol	8.639	107	80975	5.271	ng	98
37) 2-Methylnaphthalene	8.816	142	189400	5.726	ng	99
38) 1-Methylnaphthalene	8.916	142	188155	5.788	ng	100
40) 1,2,4,5-Tetrachloroben...	8.981	216	80086	5.467	ng	98
41) Hexachlorocyclopentadiene	8.975	237	21995	4.531	ng	99
43) 2,4,6-Trichlorophenol	9.086	196	47166	4.837	ng	99
44) 2,4,5-Trichlorophenol	9.122	196	49432	4.955	ng	99
46) 1,1'-Biphenyl	9.281	154	236377	5.797	ng	98

Data Path : Z:\svoasrv\HPCHEM1\BNA_F\Data\BF122624\
 Data File : BF140971.D
 Acq On : 26 Dec 2024 16:49
 Operator : RC/JU
 Sample : SSTDIC005
 Misc :
 ALS Vial : 3 Sample Multiplier: 1

Instrument :
 BNA_F
 ClientSampleId :
 SSTDIC005

Quant Time: Dec 27 00:16:30 2024
 Quant Method : Z:\svoasrv\HPCHEM1\BNA_F\Methods\8270-BF122624.M
 Quant Title : ASP BNA STANDARDS FOR 5 POINT CALIBRATION
 QLast Update : Fri Dec 27 00:11:18 2024
 Response via : Initial Calibration

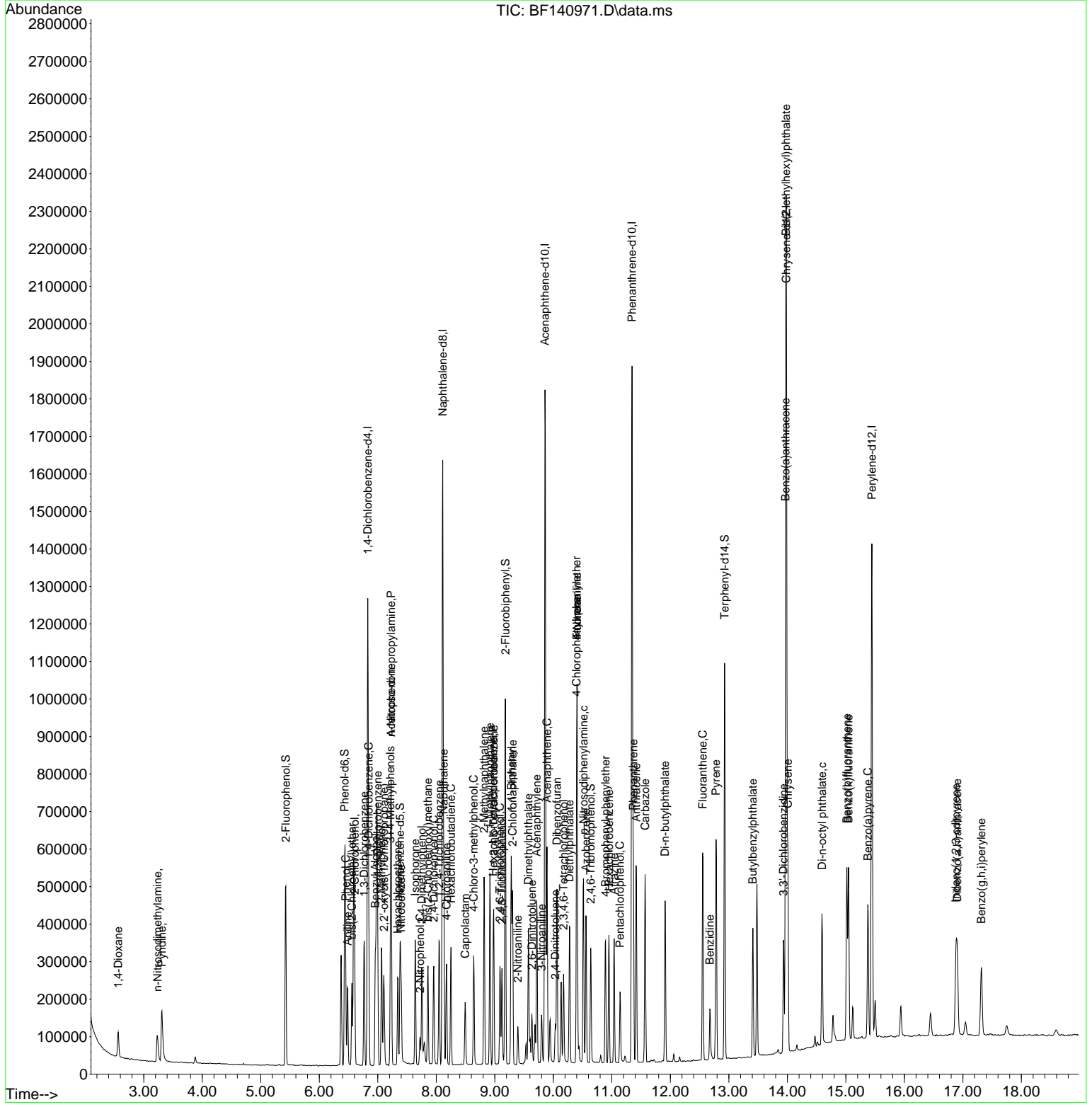
Compound	R.T.	QIon	Response	Conc	Units	Dev(Min)
47) 2-Chloronaphthalene	9.304	162	181255	5.732	ng	97
48) 2-Nitroaniline	9.392	65	18450	6.658	ng	95
49) Acenaphthylene	9.716	152	257474	5.656	ng	98
50) Dimethylphthalate	9.575	163	191408	5.465	ng	99
51) 2,6-Dinitrotoluene	9.634	165	17091	5.865	ng	88
52) Acenaphthene	9.892	154	171603	5.576	ng	99
53) 3-Nitroaniline	9.798	138	20408	5.713	ng	# 85
55) Dibenzofuran	10.063	168	247167	5.715	ng	97
57) 2,4-Dinitrotoluene	10.033	165	18052	6.371	ng	# 85
58) Fluorene	10.404	166	199322	5.943	ng	100
59) 2,3,4,6-Tetrachlorophenol	10.175	232	40337	4.882	ng	100
60) Diethylphthalate	10.275	149	190810	5.518	ng	99
61) 4-Chlorophenyl-phenyle...	10.398	204	93161	5.773	ng	100
62) 4-Nitroaniline	10.404	138	20793	5.839	ng	# 78
63) Azobenzene	10.557	77	199905	5.508	ng	99
66) n-Nitrosodiphenylamine	10.516	169	167108	5.654	ng	100
67) 4-Bromophenyl-phenylether	10.892	248	55213	5.442	ng	99
68) Hexachlorobenzene	10.951	284	61339	5.483	ng	98
69) Atrazine	11.039	200	51263	6.209	ng	98
70) Pentachlorophenol	11.139	266	28530	4.096	ng	97
71) Phenanthrene	11.369	178	286441	5.799	ng	98
72) Anthracene	11.416	178	278610	5.756	ng	98
73) Carbazole	11.569	167	267065	5.740	ng	99
74) Di-n-butylphthalate	11.910	149	292755	5.532	ng	99
75) Fluoranthene	12.551	202	312668	5.836	ng	99
77) Benzidine	12.674	184	79065	4.990	ng	99
78) Pyrene	12.780	202	328787	5.014	ng	98
80) Butylbenzylphthalate	13.410	149	99667	4.162	ng	96
81) Benzo(a)anthracene	13.969	228	294772	5.641	ng	99
82) 3,3'-Dichlorobenzidine	13.933	252	88822	5.658	ng	98
83) Chrysene	14.010	228	251288	5.335	ng	98
84) Bis(2-ethylhexyl)phtha...	13.974	149	154045	4.960	ng	99
85) Di-n-octyl phthalate	14.592	149	216905	4.825	ng	99
87) Indeno(1,2,3-cd)pyrene	16.880	276	191761	4.166	ng	99
88) Benzo(b)fluoranthene	15.016	252	248464	4.876	ng	100
89) Benzo(k)fluoranthene	15.045	252	212890	5.330	ng	99
90) Benzo(a)pyrene	15.374	252	209418	5.294	ng	98
91) Dibenzo(a,h)anthracene	16.904	278	154741	4.147	ng	99
92) Benzo(g,h,i)perylene	17.315	276	150669	3.893	ng	99

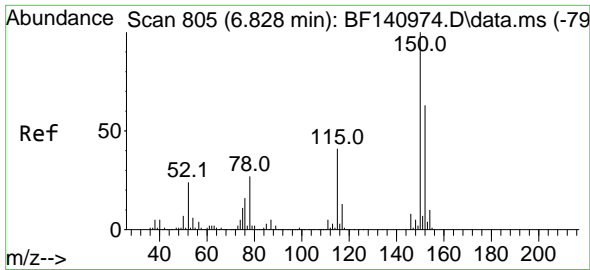
(#) = qualifier out of range (m) = manual integration (+) = signals summed

Data Path : Z:\svoasrv\HPCHEM1\BNA_F\Data\BF122624\
 Data File : BF140971.D
 Acq On : 26 Dec 2024 16:49
 Operator : RC/JU
 Sample : SSTDICC005
 Misc :
 ALS Vial : 3 Sample Multiplier: 1

Instrument :
 BNA_F
 ClientSampleId :
 SSTDICC005

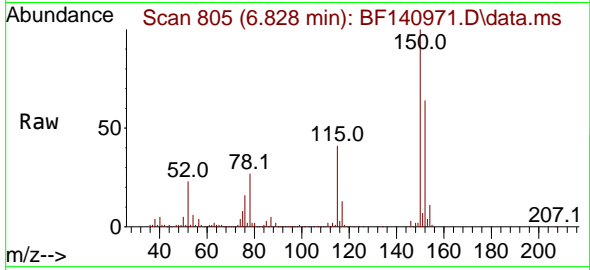
Quant Time: Dec 27 00:16:30 2024
 Quant Method : Z:\svoasrv\HPCHEM1\BNA_F\Methods\8270-BF122624.M
 Quant Title : ASP BNA STANDARDS FOR 5 POINT CALIBRATION
 QLast Update : Fri Dec 27 00:11:18 2024
 Response via : Initial Calibration



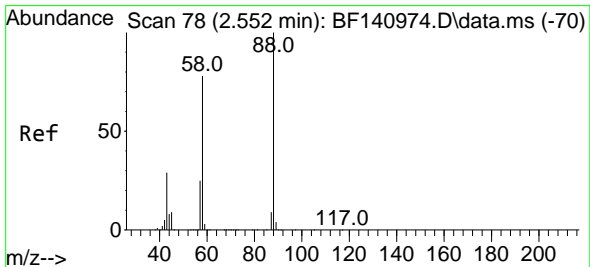
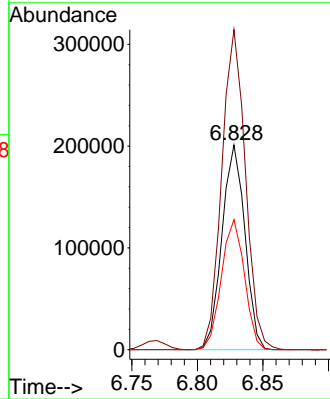
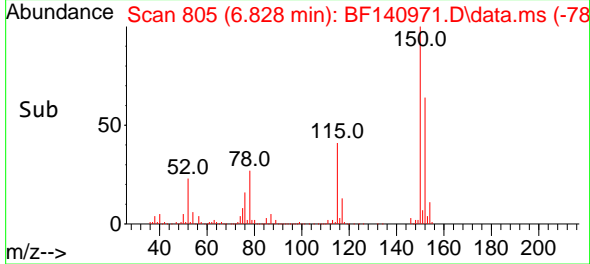


#1
 1,4-Dichlorobenzene-d4
 Concen: 20.000 ng
 RT: 6.828 min Scan# 80
 Delta R.T. -0.000 min
 Lab File: BF140971.D
 Acq: 26 Dec 2024 16:49

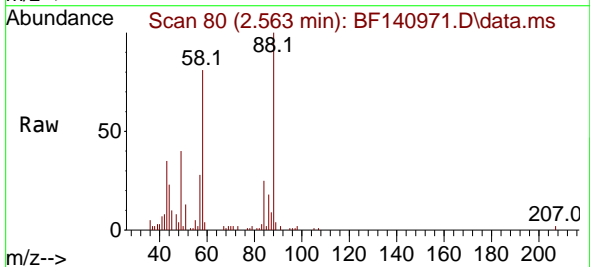
Instrument :
 BNA_F
 ClientSampleId :
 SSTDICC005



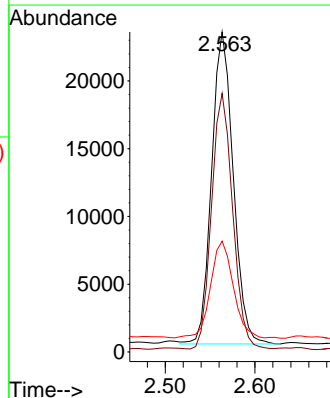
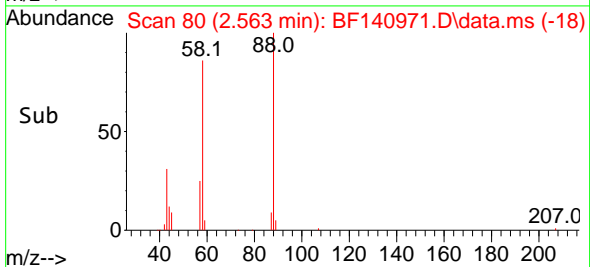
Tgt Ion:152 Resp: 244397
 Ion Ratio Lower Upper
 152 100
 150 156.4 127.0 190.6
 115 63.6 51.7 77.5

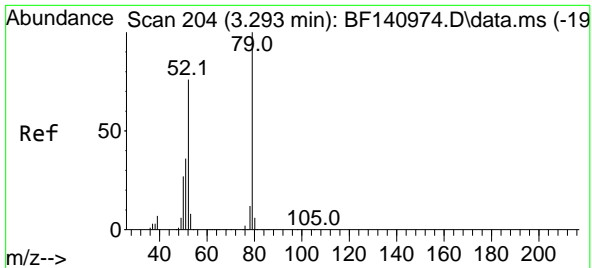


#2
 1,4-Dioxane
 Concen: 5.241 ng
 RT: 2.563 min Scan# 80
 Delta R.T. 0.012 min
 Lab File: BF140971.D
 Acq: 26 Dec 2024 16:49



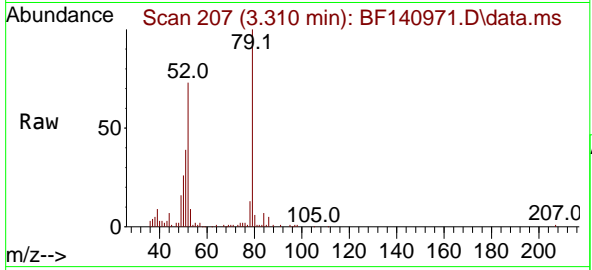
Tgt Ion: 88 Resp: 38472
 Ion Ratio Lower Upper
 88 100
 58 80.0 63.0 94.4
 43 33.0 23.4 35.2



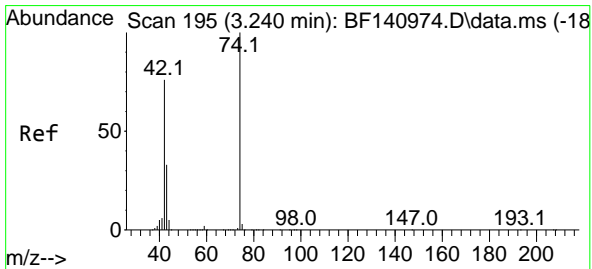
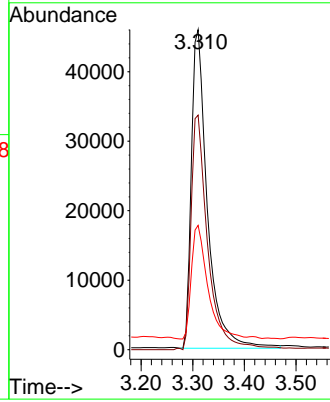
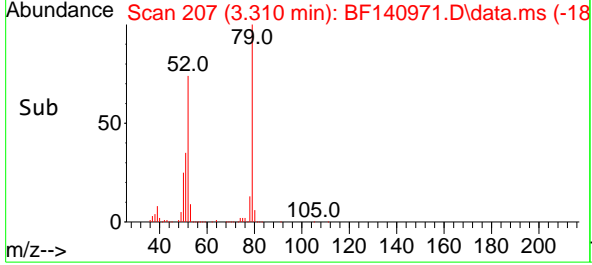


#3
 Pyridine
 Concen: 5.521 ng
 RT: 3.310 min Scan# 204
 Delta R.T. 0.018 min
 Lab File: BF140971.D
 Acq: 26 Dec 2024 16:49

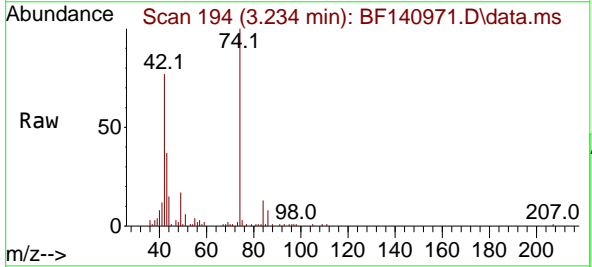
Instrument : BNA_F
 ClientSampleId : SSTDICC005



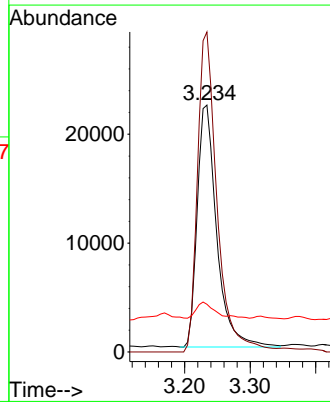
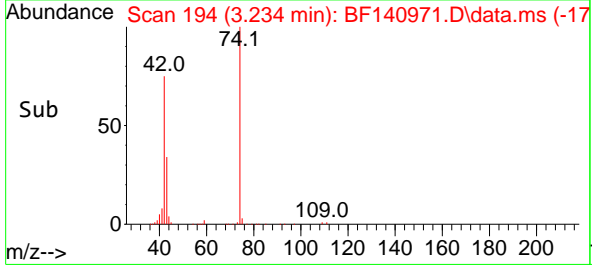
Tgt Ion: 79 Resp: 99046
 Ion Ratio Lower Upper
 79 100
 52 73.3 60.4 90.6
 51 38.9 28.8 43.2

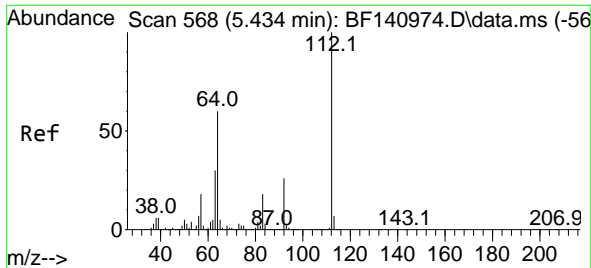


#4
 n-Nitrosodimethylamine
 Concen: 5.077 ng
 RT: 3.234 min Scan# 194
 Delta R.T. -0.006 min
 Lab File: BF140971.D
 Acq: 26 Dec 2024 16:49



Tgt Ion: 42 Resp: 46147
 Ion Ratio Lower Upper
 42 100
 74 129.6 105.8 158.6
 44 19.3 6.6 10.0#





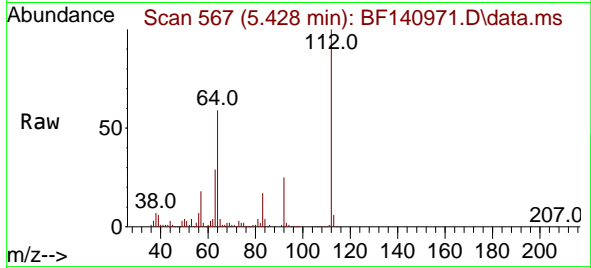
#5
 2-Fluorophenol
 Concen: 11.323 ng
 RT: 5.428 min Scan# 50
 Delta R.T. -0.006 min
 Lab File: BF140971.D
 Acq: 26 Dec 2024 16:49

Instrument :

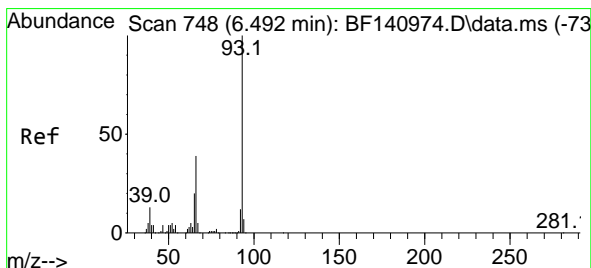
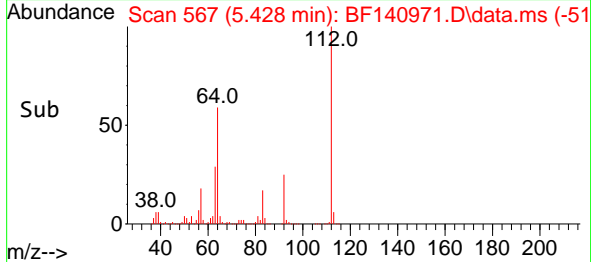
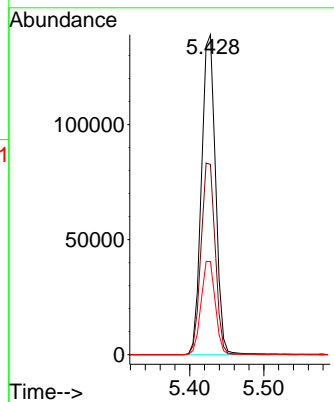
BNA_F

ClientSampleId :

SSTDICC005

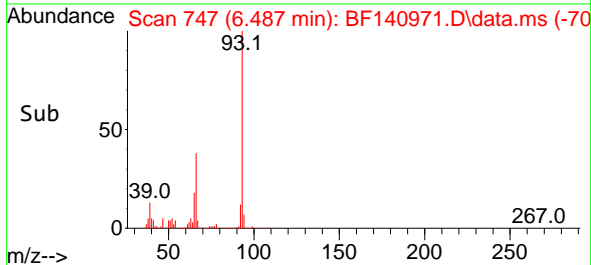
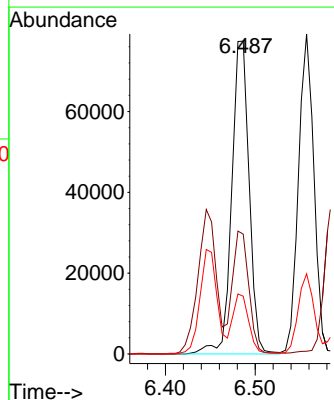
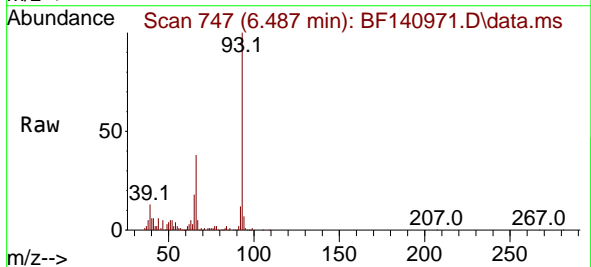


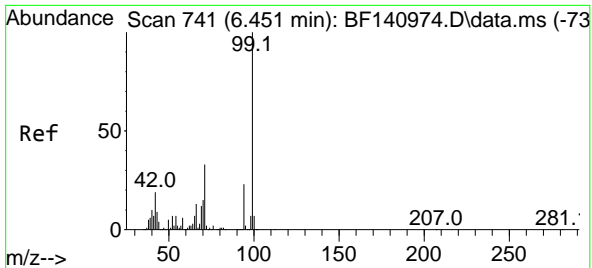
Tgt Ion:112 Resp: 183577
 Ion Ratio Lower Upper
 112 100
 64 59.5 47.7 71.5
 63 29.1 24.2 36.2



#6
 Aniline
 Concen: 5.605 ng
 RT: 6.487 min Scan# 747
 Delta R.T. -0.024 min
 Lab File: BF140971.D
 Acq: 26 Dec 2024 16:49

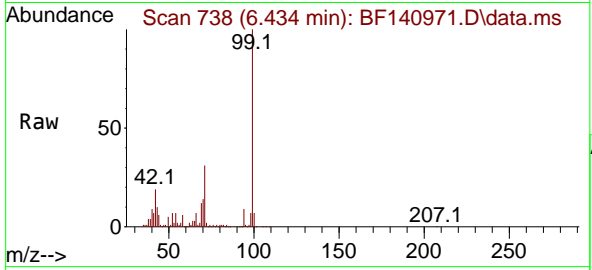
Tgt Ion: 93 Resp: 104416
 Ion Ratio Lower Upper
 93 100
 66 38.3 31.8 47.8
 65 18.5 15.4 23.0





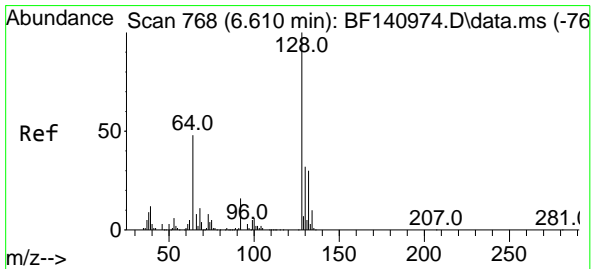
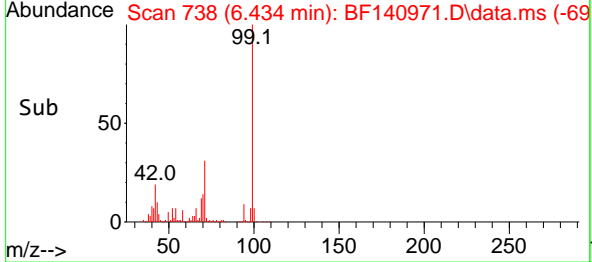
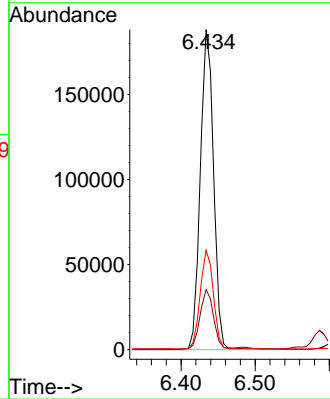
#7
 Phenol-d6
 Concen: 11.178 ng
 RT: 6.434 min Scan# 711
 Delta R.T. -0.018 min
 Lab File: BF140971.D
 Acq: 26 Dec 2024 16:49

Instrument : BNA_F
 ClientSampleId : SSTDICC005

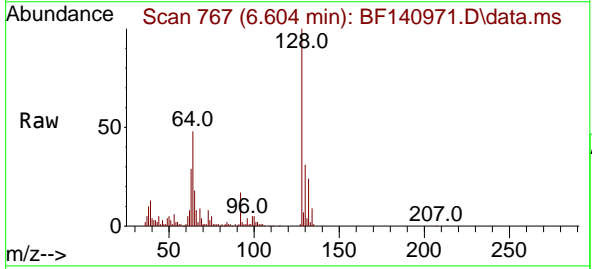


Tgt Ion: 99 Resp: 233457

Ion	Ratio	Lower	Upper
99	100		
42	18.7	15.0	22.4
71	31.1	26.2	39.2

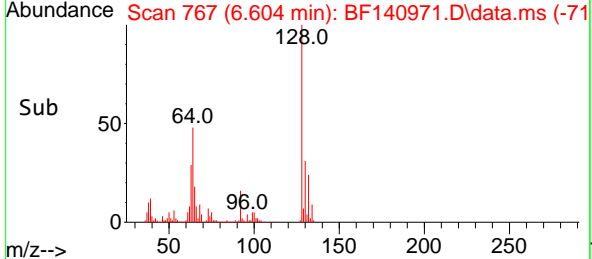
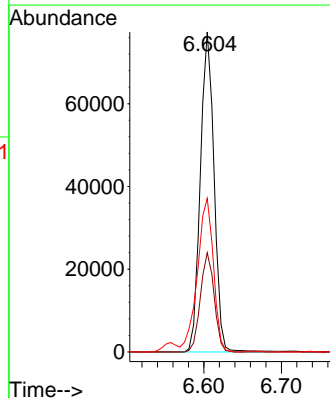


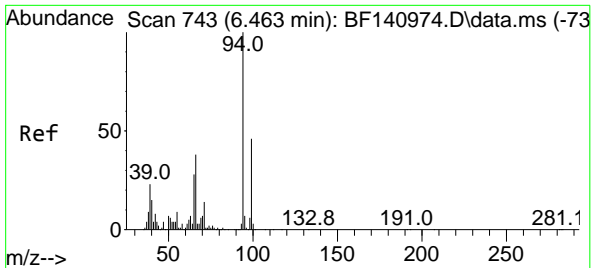
#8
 2-Chlorophenol
 Concen: 5.563 ng
 RT: 6.604 min Scan# 767
 Delta R.T. -0.006 min
 Lab File: BF140971.D
 Acq: 26 Dec 2024 16:49



Tgt Ion: 128 Resp: 95096

Ion	Ratio	Lower	Upper
128	100		
130	31.0	12.2	52.2
64	48.0	30.3	70.3



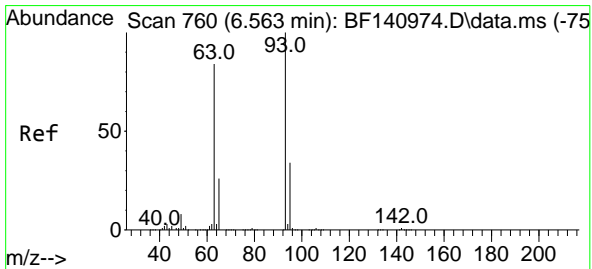
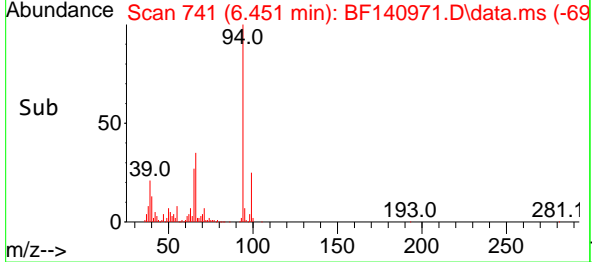
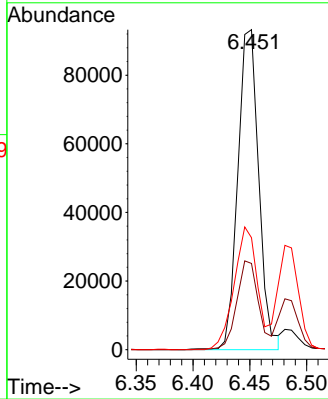
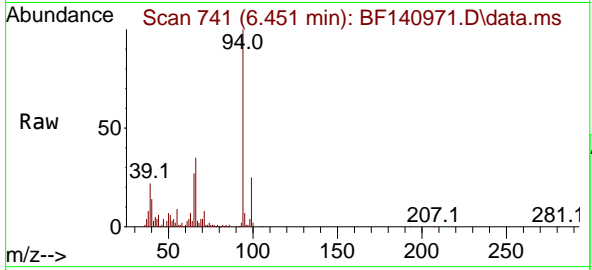


#10
 Phenol
 Concen: 5.534 ng
 RT: 6.451 min Scan# 741
 Delta R.T. -0.012 min
 Lab File: BF140971.D
 Acq: 26 Dec 2024 16:49

Instrument : BNA_F
 ClientSampleId : SSTDICC005

Tgt Ion: 94 Resp: 119516

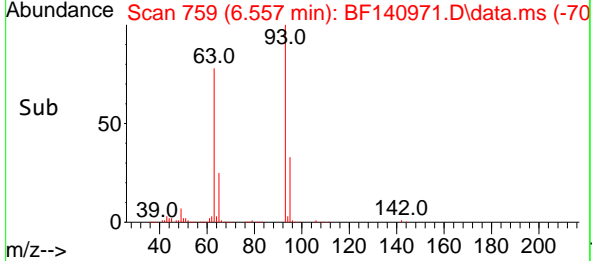
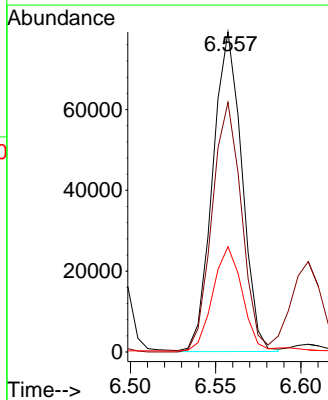
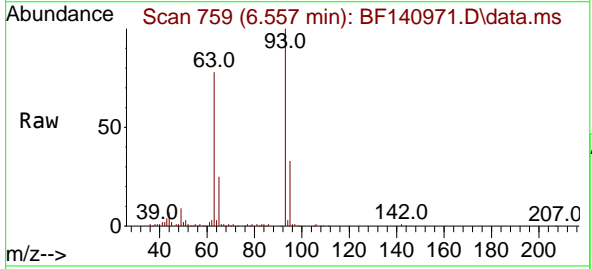
Ion	Ratio	Lower	Upper
94	100		
65	27.0	8.1	48.1
66	35.0	18.7	58.7

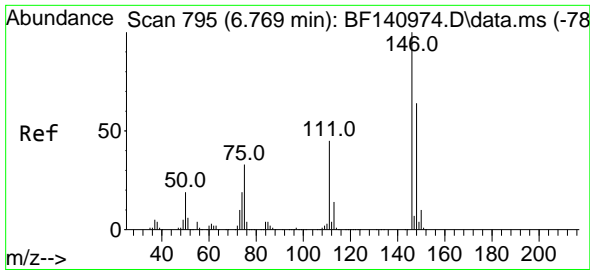


#11
 bis(2-Chloroethyl)ether
 Concen: 5.412 ng
 RT: 6.557 min Scan# 759
 Delta R.T. -0.006 min
 Lab File: BF140971.D
 Acq: 26 Dec 2024 16:49

Tgt Ion: 93 Resp: 94288

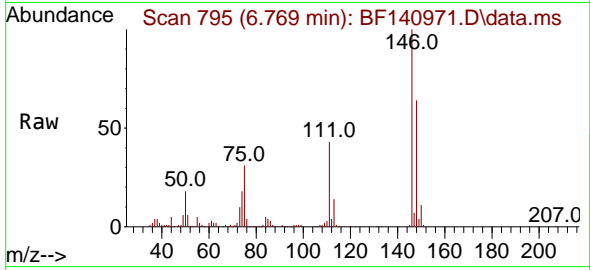
Ion	Ratio	Lower	Upper
93	100		
63	78.0	60.3	100.3
95	32.9	12.2	52.2



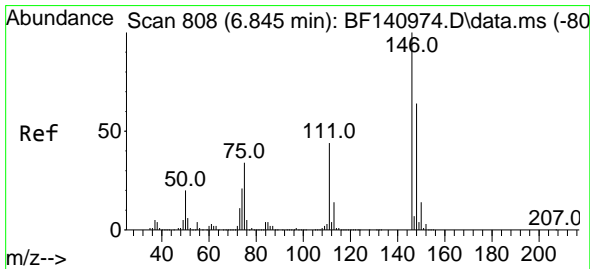
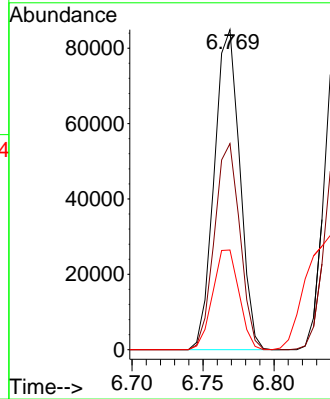
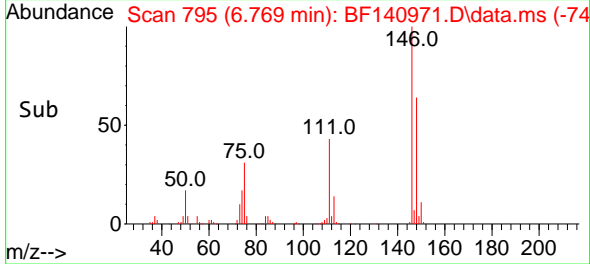


#12
 1,3-Dichlorobenzene
 Concen: 5.621 ng
 RT: 6.769 min Scan# 795
 Delta R.T. 0.000 min
 Lab File: BF140971.D
 Acq: 26 Dec 2024 16:49

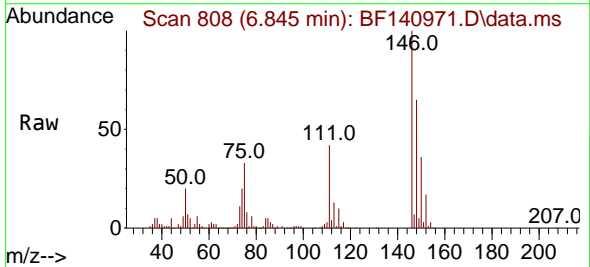
Instrument :
 BNA_F
 ClientSampleId :
 SSTDICC005



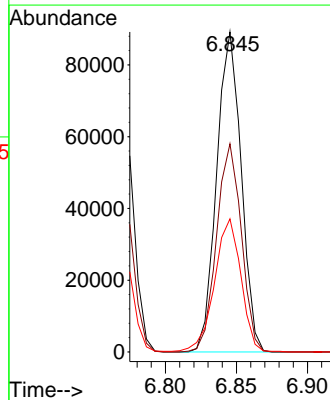
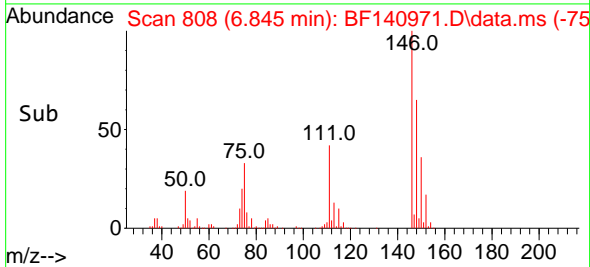
Tgt Ion:146 Resp: 106038
 Ion Ratio Lower Upper
 146 100
 148 64.4 51.0 76.4
 75 31.2 26.1 39.1

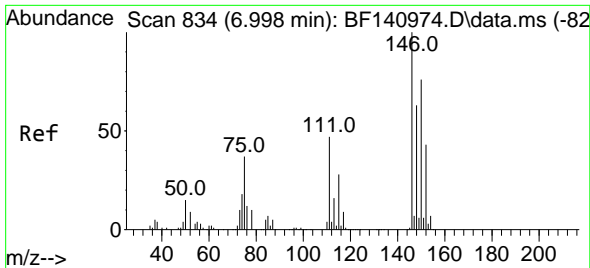


#13
 1,4-Dichlorobenzene
 Concen: 5.621 ng
 RT: 6.845 min Scan# 808
 Delta R.T. 0.000 min
 Lab File: BF140971.D
 Acq: 26 Dec 2024 16:49



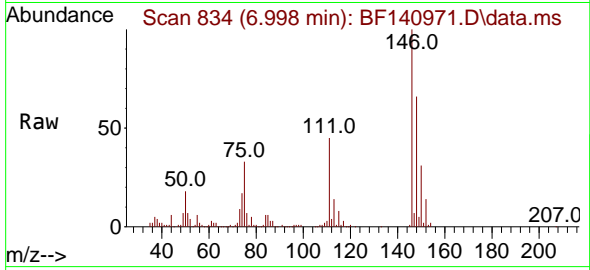
Tgt Ion:146 Resp: 106890
 Ion Ratio Lower Upper
 146 100
 148 65.0 51.3 76.9
 111 41.6 35.3 52.9



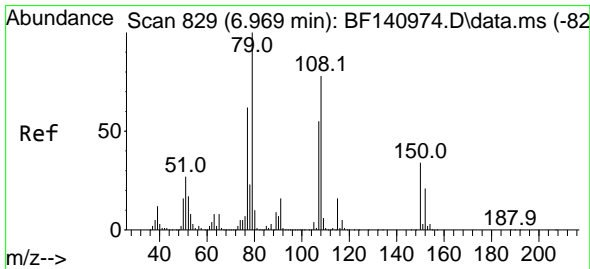
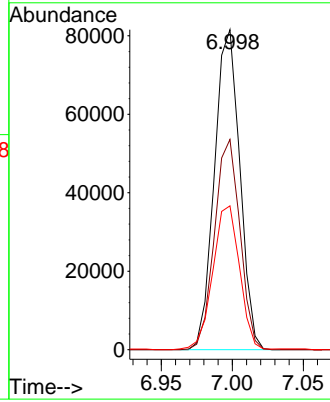
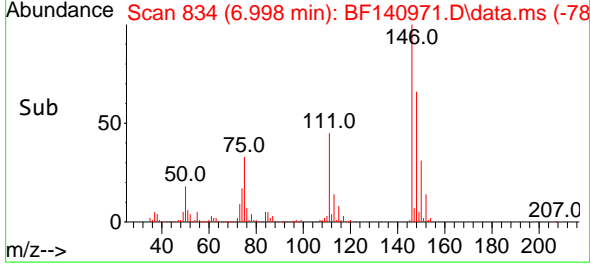


#14
 1,2-Dichlorobenzene
 Concen: 5.721 ng
 RT: 6.998 min Scan# 81
 Delta R.T. 0.000 min
 Lab File: BF140971.D
 Acq: 26 Dec 2024 16:49

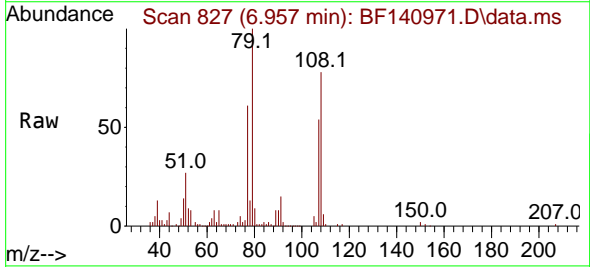
Instrument :
 BNA_F
 ClientSampleId :
 SSTDICC005



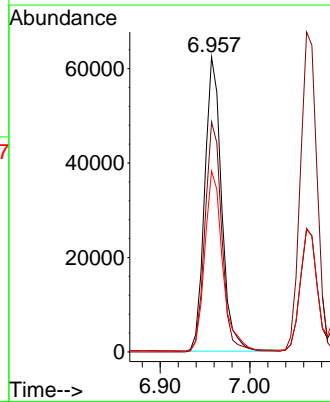
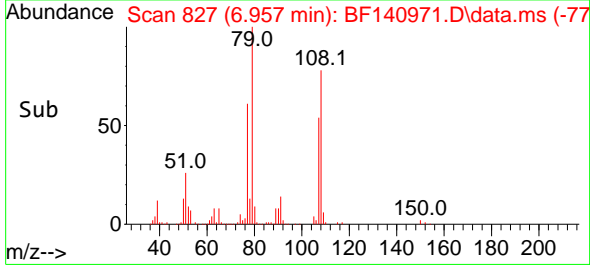
Tgt Ion:146 Resp: 101438
 Ion Ratio Lower Upper
 146 100
 148 65.7 50.6 76.0
 111 45.0 37.3 55.9

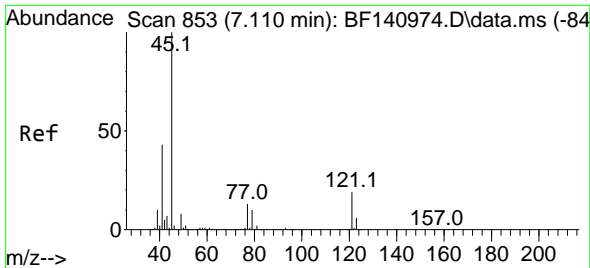


#15
 Benzyl Alcohol
 Concen: 5.426 ng
 RT: 6.957 min Scan# 827
 Delta R.T. -0.012 min
 Lab File: BF140971.D
 Acq: 26 Dec 2024 16:49



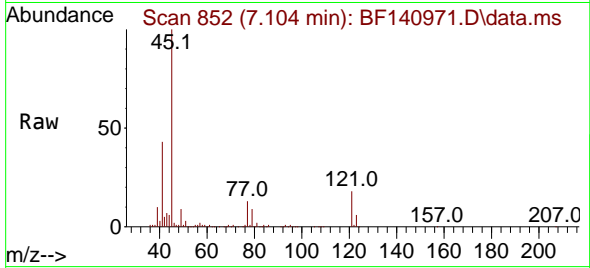
Tgt Ion: 79 Resp: 81438
 Ion Ratio Lower Upper
 79 100
 108 78.0 62.5 93.7
 77 61.3 49.3 73.9





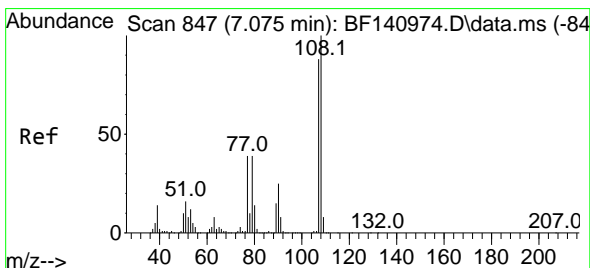
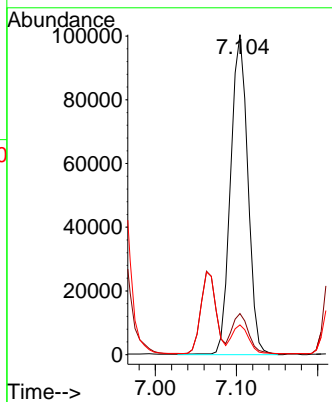
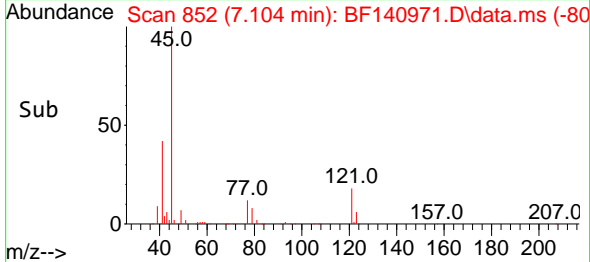
#16
 2,2'-oxybis(1-Chloropropane)
 Concen: 5.606 ng
 RT: 7.104 min Scan# 811
 Delta R.T. -0.006 min
 Lab File: BF140971.D
 Acq: 26 Dec 2024 16:49

Instrument :
 BNA_F
 ClientSampleId :
 SSTDICC005

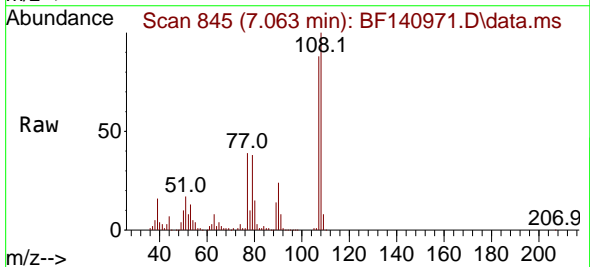


Tgt Ion: 45 Resp: 147834

Ion	Ratio	Lower	Upper
45	100		
77	12.9	0.0	33.1
79	9.3	0.0	30.1

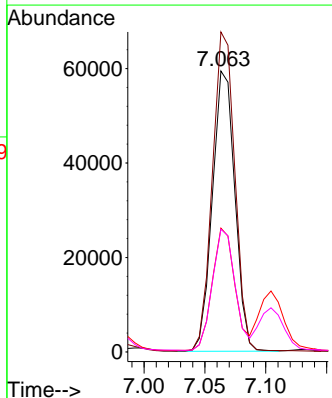
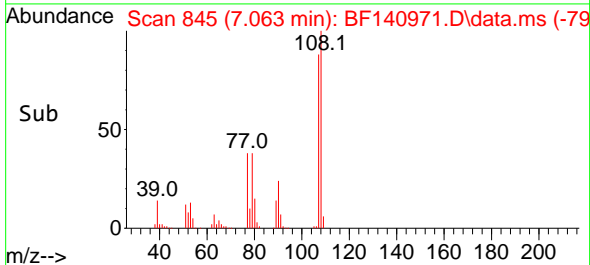


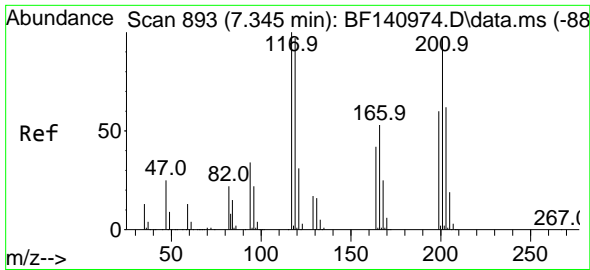
#17
 2-Methylphenol
 Concen: 5.378 ng
 RT: 7.063 min Scan# 845
 Delta R.T. -0.012 min
 Lab File: BF140971.D
 Acq: 26 Dec 2024 16:49



Tgt Ion: 107 Resp: 76369

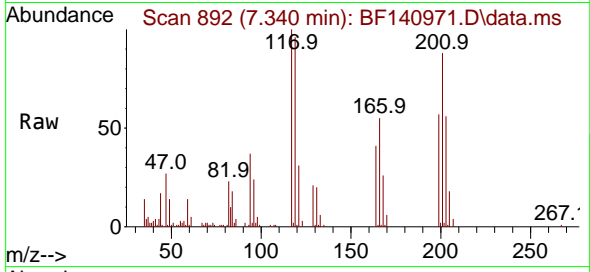
Ion	Ratio	Lower	Upper
107	100		
108	113.9	90.6	136.0
77	44.1	35.3	52.9
79	43.7	35.3	52.9



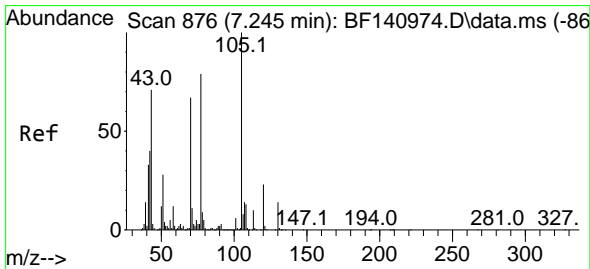
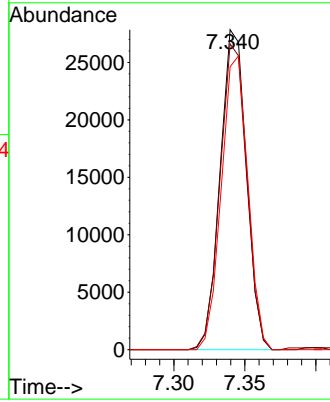
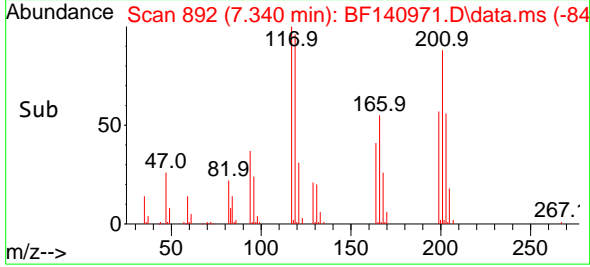


#18
 Hexachloroethane
 Concen: 5.313 ng
 RT: 7.340 min Scan# 893
 Delta R.T. -0.006 min
 Lab File: BF140971.D
 Acq: 26 Dec 2024 16:49

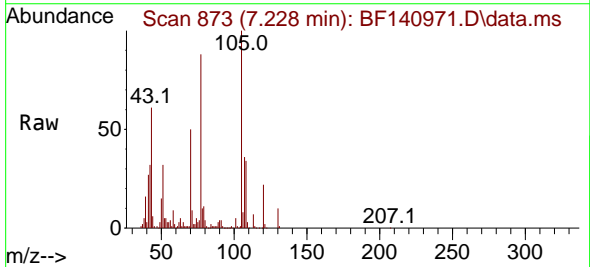
Instrument :
 BNA_F
 Client Sample Id :
 SSTDICC005



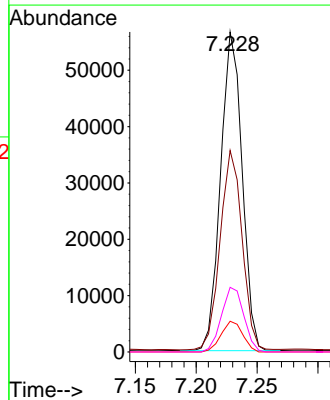
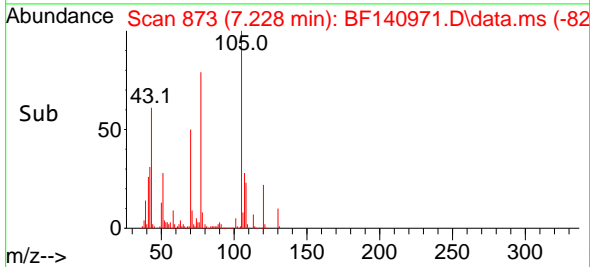
Tgt Ion:117 Resp: 35891
 Ion Ratio Lower Upper
 117 100
 119 95.6 77.5 116.3
 201 88.4 77.4 116.2

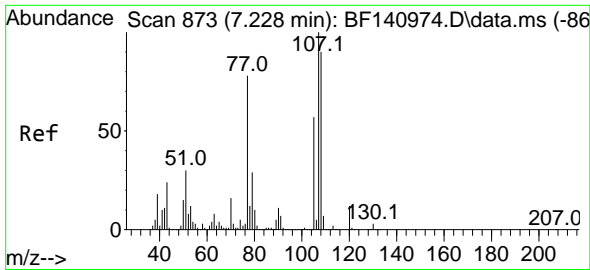


#19
 n-Nitroso-di-n-propylamine
 Concen: 5.445 ng
 RT: 7.228 min Scan# 873
 Delta R.T. -0.018 min
 Lab File: BF140971.D
 Acq: 26 Dec 2024 16:49



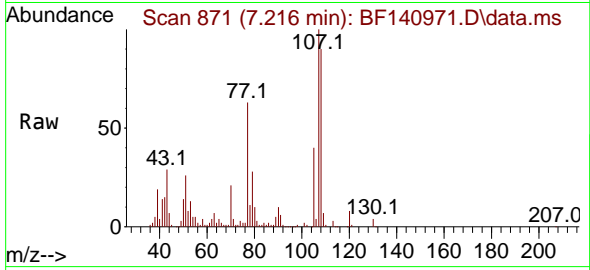
Tgt Ion: 70 Resp: 69676
 Ion Ratio Lower Upper
 70 100
 42 63.0 48.1 72.1
 101 9.6 7.6 11.4
 130 20.2 16.6 24.8





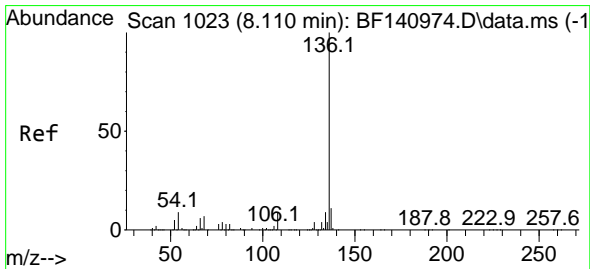
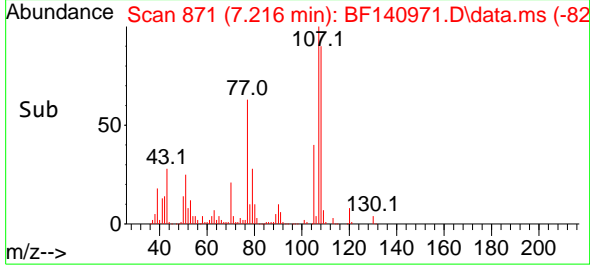
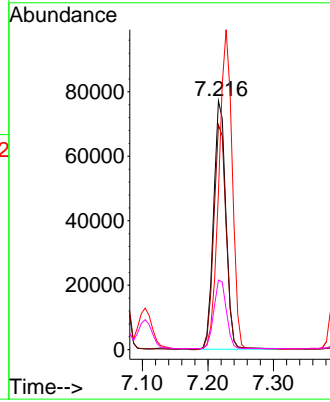
#20
 3+4-Methylphenols
 Concen: 5.590 ng
 RT: 7.216 min Scan# 81
 Delta R.T. -0.012 min
 Lab File: BF140971.D
 Acq: 26 Dec 2024 16:49

Instrument :
 BNA_F
 ClientSampleId :
 SSTDICC005



Tgt Ion:107 Resp: 100457

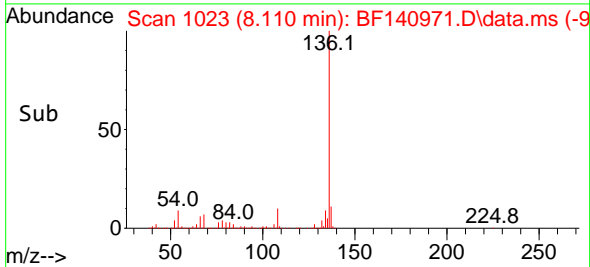
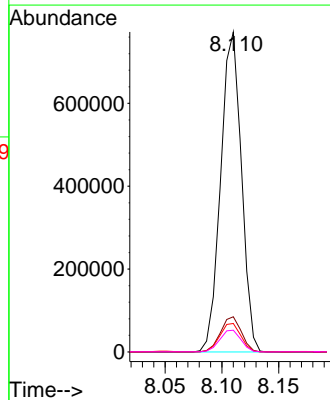
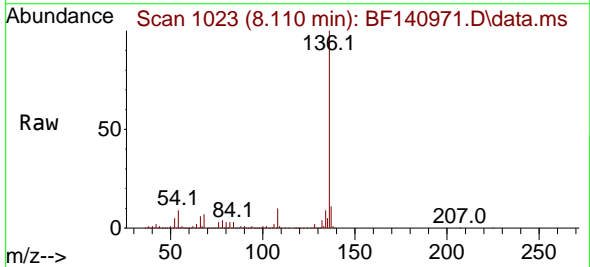
Ion	Ratio	Lower	Upper
107	100		
108	90.4	69.6	109.6
77	63.1	57.6	97.6
79	28.0	8.8	48.8

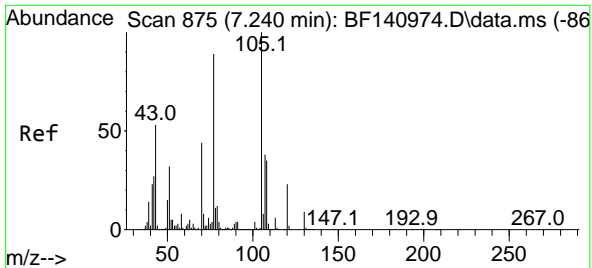


#21
 Naphthalene-d8
 Concen: 20.000 ng
 RT: 8.110 min Scan# 1023
 Delta R.T. 0.000 min
 Lab File: BF140971.D
 Acq: 26 Dec 2024 16:49

Tgt Ion:136 Resp: 981263

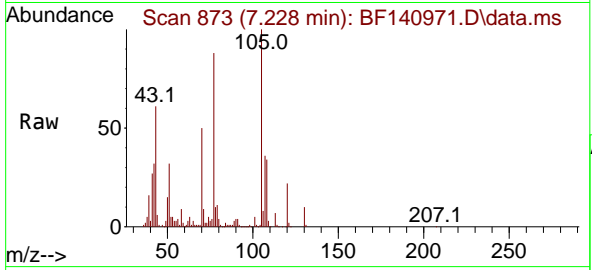
Ion	Ratio	Lower	Upper
136	100		
137	11.0	9.0	13.4
54	8.9	7.6	11.4
68	6.8	5.6	8.4





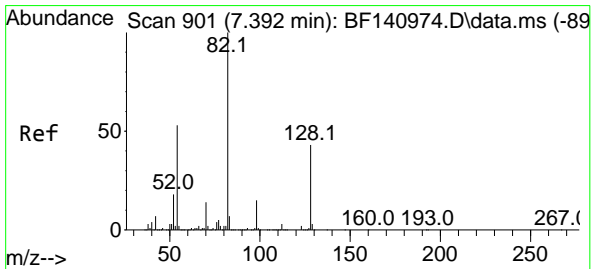
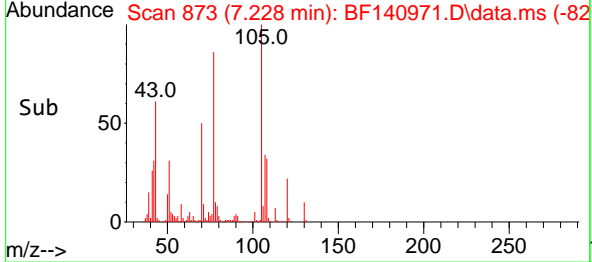
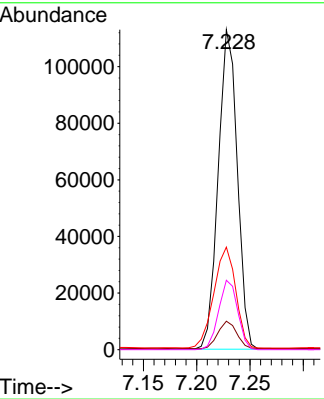
#22
 Acetophenone
 Concen: 5.856 ng
 RT: 7.228 min Scan# 811
 Delta R.T. -0.012 min
 Lab File: BF140971.D
 Acq: 26 Dec 2024 16:49

Instrument :
 BNA_F
 ClientSampleId :
 SSTDICC005

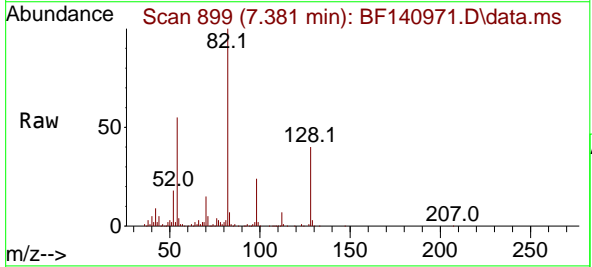


Tgt Ion: 105 Resp: 140966

Ion	Ratio	Lower	Upper
105	100		
71	8.9	6.1	9.1
51	32.0	25.8	38.6
120	21.7	18.1	27.1

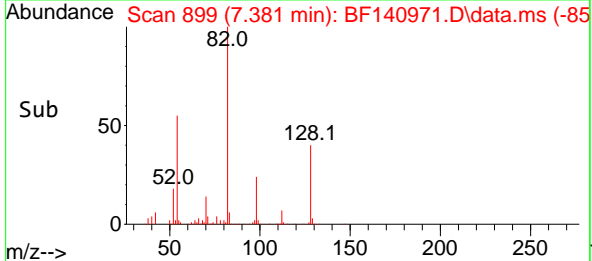
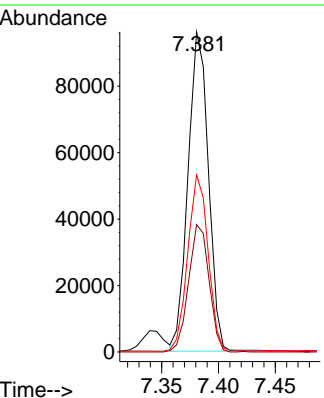


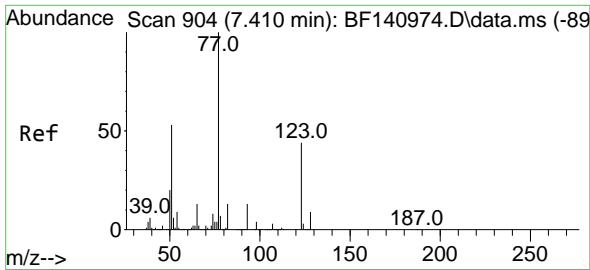
#23
 Nitrobenzene-d5
 Concen: 7.800 ng
 RT: 7.381 min Scan# 899
 Delta R.T. -0.012 min
 Lab File: BF140971.D
 Acq: 26 Dec 2024 16:49



Tgt Ion: 82 Resp: 119635

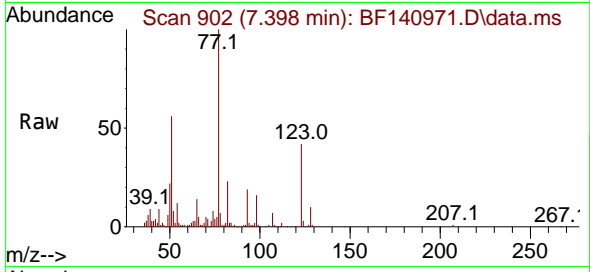
Ion	Ratio	Lower	Upper
82	100		
128	39.8	34.4	51.6
54	55.4	42.4	63.6



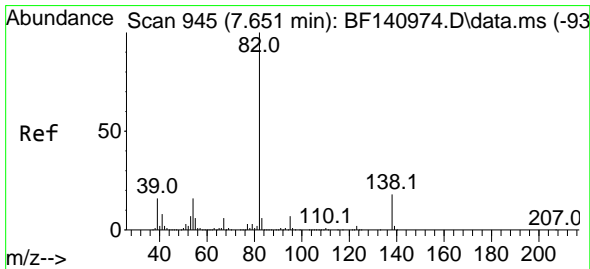
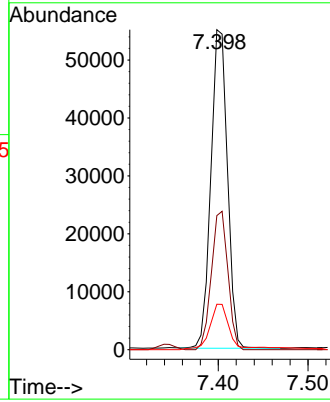
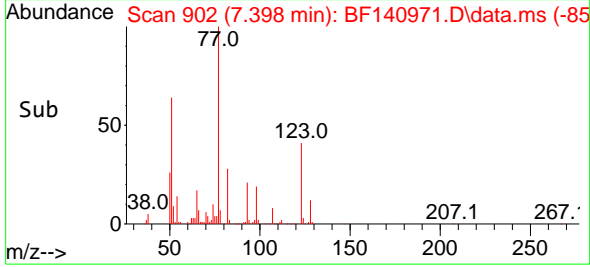


#24
 Nitrobenzene
 Concen: 4.120 ng
 RT: 7.398 min Scan# 904
 Delta R.T. -0.012 min
 Lab File: BF140971.D
 Acq: 26 Dec 2024 16:49

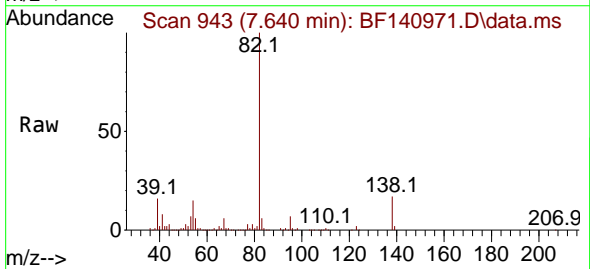
Instrument : BNA_F
 ClientSampleId : SSTDICC005



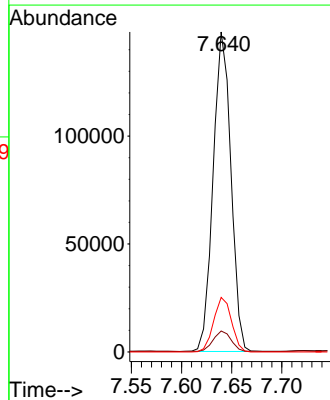
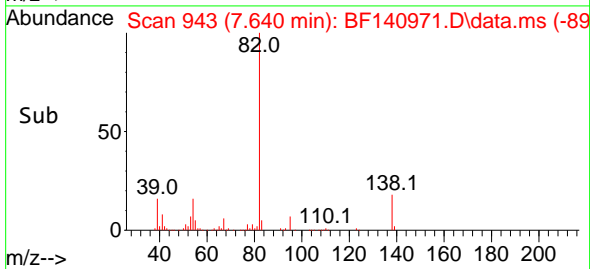
Tgt Ion: 77 Resp: 70606
 Ion Ratio Lower Upper
 77 100
 123 41.9 35.4 53.2
 65 14.2 10.7 16.1

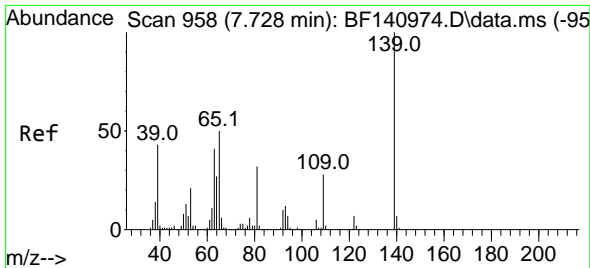


#25
 Isophorone
 Concen: 5.467 ng
 RT: 7.640 min Scan# 943
 Delta R.T. -0.012 min
 Lab File: BF140971.D
 Acq: 26 Dec 2024 16:49



Tgt Ion: 82 Resp: 182478
 Ion Ratio Lower Upper
 82 100
 95 6.6 5.6 8.4
 138 17.1 14.6 21.8





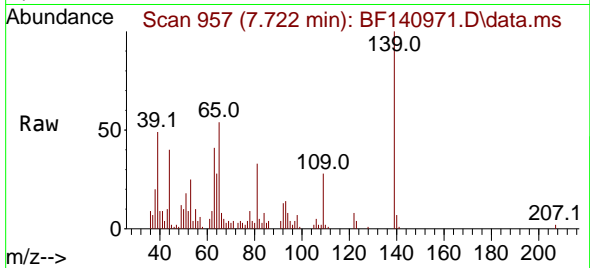
#26
 2-Nitrophenol
 Concen: 7.379 ng
 RT: 7.722 min Scan# 91
 Delta R.T. -0.006 min
 Lab File: BF140971.D
 Acq: 26 Dec 2024 16:49

Instrument :

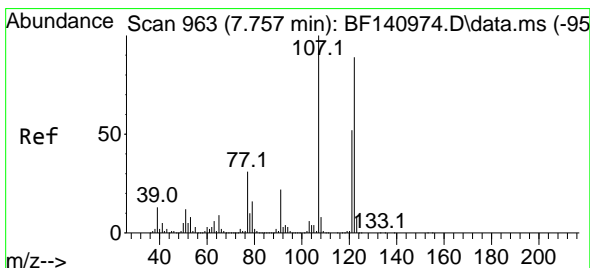
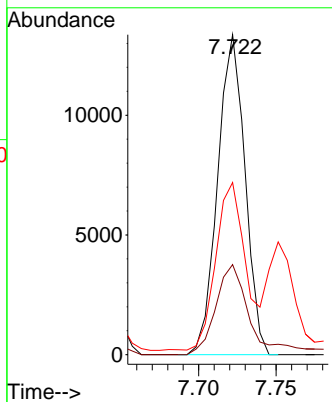
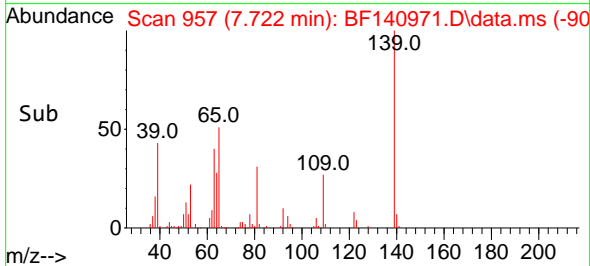
BNA_F

ClientSampleId :

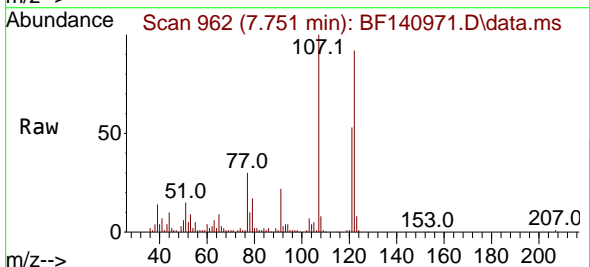
SSTDICC005



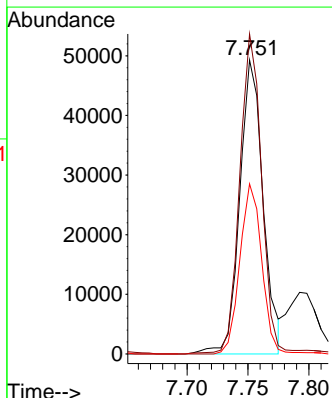
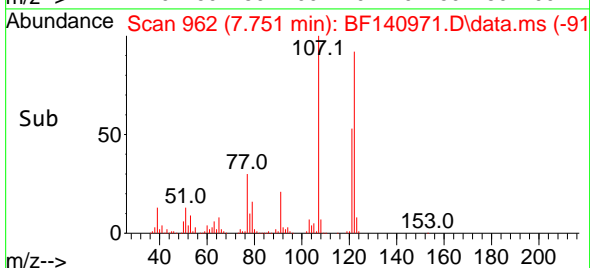
Tgt Ion:139 Resp: 16400
 Ion Ratio Lower Upper
 139 100
 109 28.2 22.2 33.4
 65 53.8 40.2 60.4

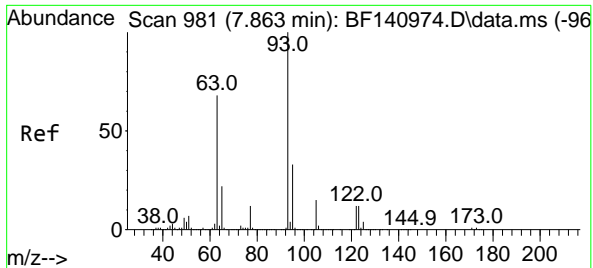


#27
 2,4-Dimethylphenol
 Concen: 5.391 ng
 RT: 7.751 min Scan# 962
 Delta R.T. -0.006 min
 Lab File: BF140971.D
 Acq: 26 Dec 2024 16:49



Tgt Ion:122 Resp: 65753
 Ion Ratio Lower Upper
 122 100
 107 108.9 89.4 134.2
 121 57.9 46.7 70.1





#28
 bis(2-Chloroethoxy)methane
 Concen: 5.534 ng
 RT: 7.857 min Scan# 91
 Delta R.T. -0.006 min
 Lab File: BF140971.D
 Acq: 26 Dec 2024 16:49

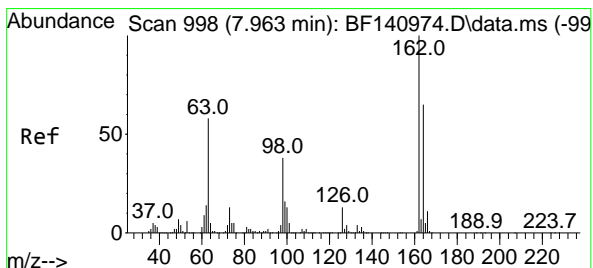
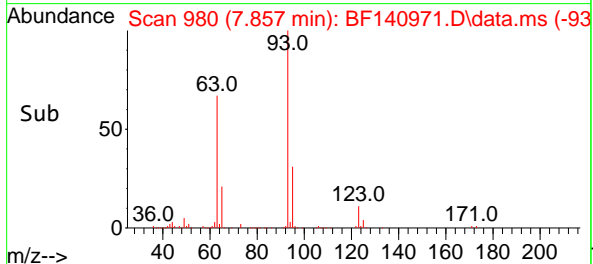
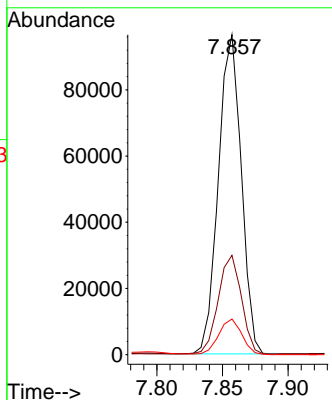
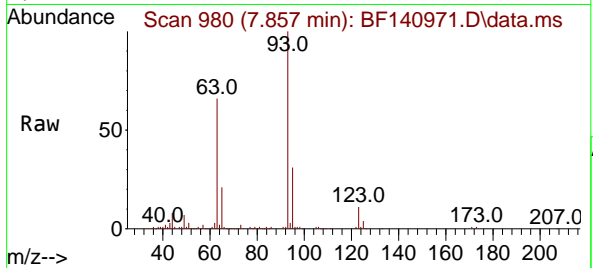
Instrument :

BNA_F

ClientSampleId :

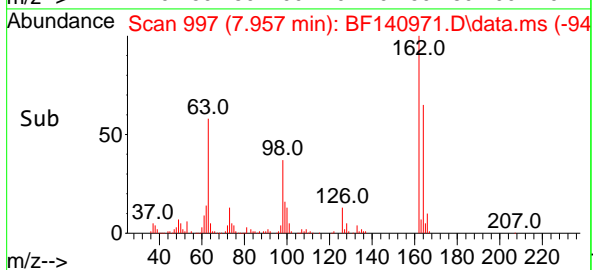
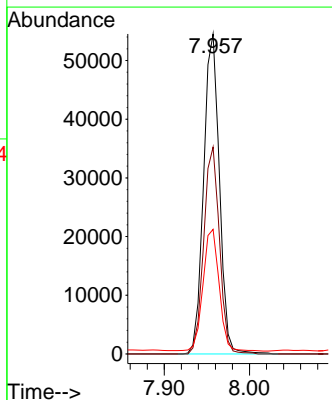
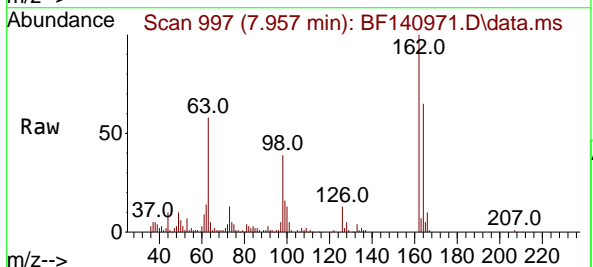
SSTDICC005

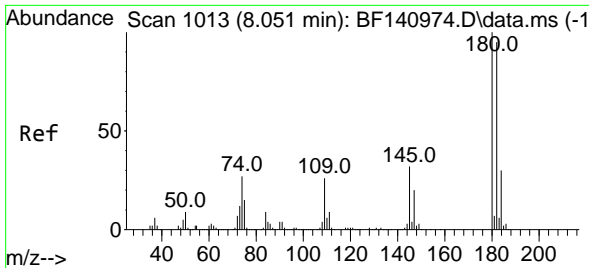
Tgt Ion: 93 Resp: 117023
 Ion Ratio Lower Upper
 93 100
 95 31.1 26.2 39.4
 123 11.2 9.9 14.9



#29
 2,4-Dichlorophenol
 Concen: 5.074 ng
 RT: 7.957 min Scan# 997
 Delta R.T. -0.006 min
 Lab File: BF140971.D
 Acq: 26 Dec 2024 16:49

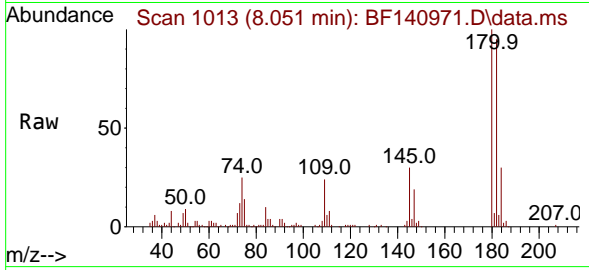
Tgt Ion:162 Resp: 70187
 Ion Ratio Lower Upper
 162 100
 164 64.6 44.8 84.8
 98 38.9 18.6 58.6



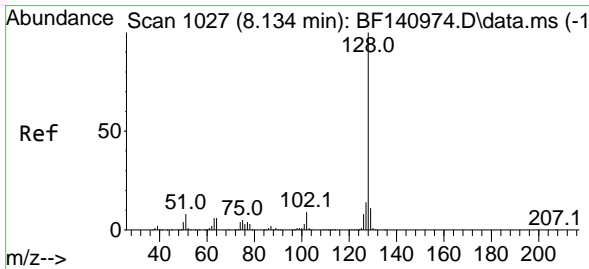
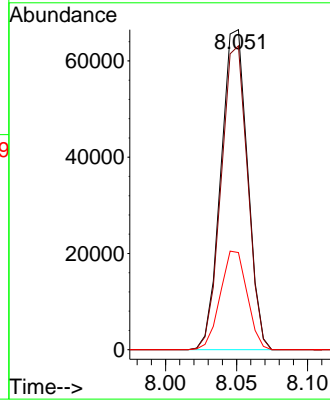
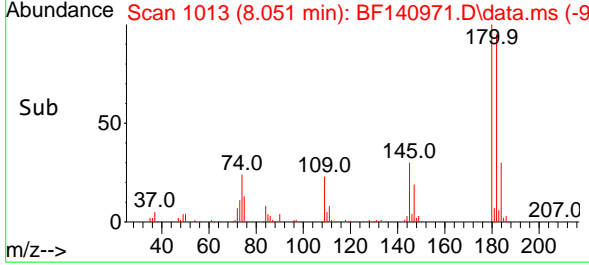


#30
 1,2,4-Trichlorobenzene
 Concen: 5.549 ng
 RT: 8.051 min Scan# 1013
 Delta R.T. 0.000 min
 Lab File: BF140971.D
 Acq: 26 Dec 2024 16:49

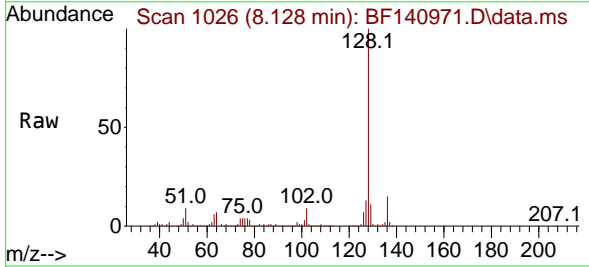
Instrument : BNA_F
 ClientSampleId : SSTDICC005



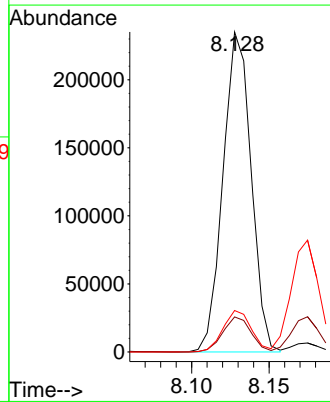
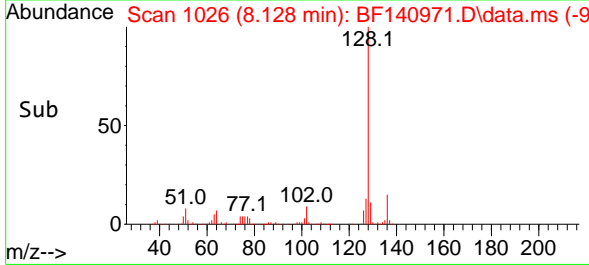
Tgt Ion:180 Resp: 86885
 Ion Ratio Lower Upper
 180 100
 182 95.0 76.2 114.4
 145 30.4 25.4 38.2

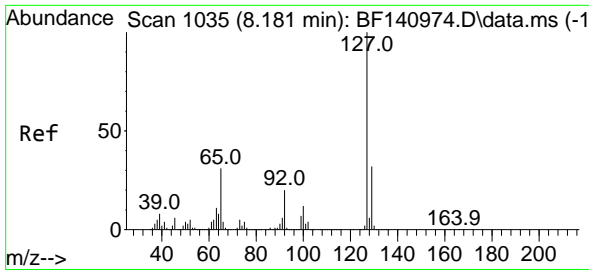


#31
 Naphthalene
 Concen: 5.734 ng
 RT: 8.128 min Scan# 1026
 Delta R.T. -0.006 min
 Lab File: BF140971.D
 Acq: 26 Dec 2024 16:49



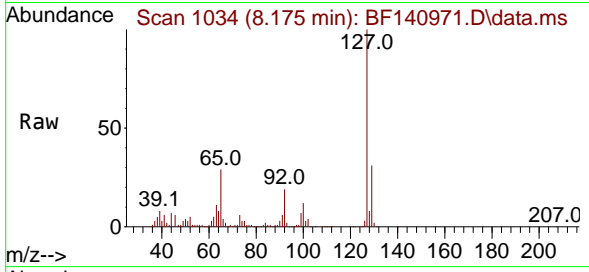
Tgt Ion:128 Resp: 296471
 Ion Ratio Lower Upper
 128 100
 129 10.9 9.2 13.8
 127 13.0 11.0 16.4





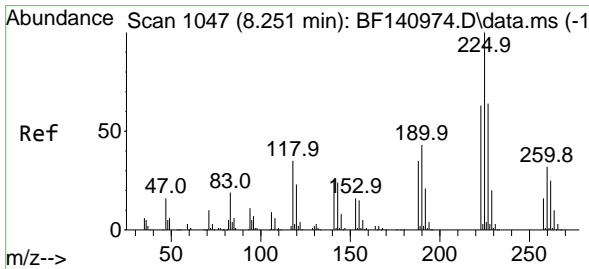
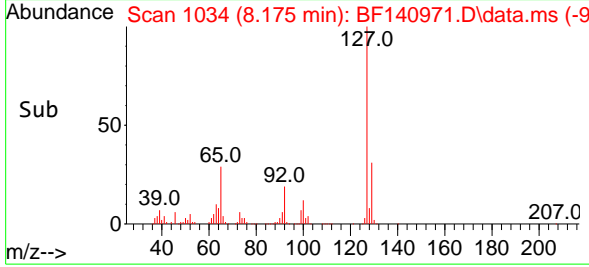
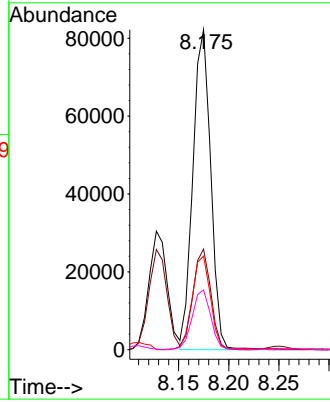
#33
 4-Chloroaniline
 Concen: 5.435 ng
 RT: 8.175 min Scan# 1034
 Delta R.T. -0.006 min
 Lab File: BF140971.D
 Acq: 26 Dec 2024 16:49

Instrument : BNA_F
 ClientSampleId : SSTDICC005



Tgt Ion:127 Resp: 101675

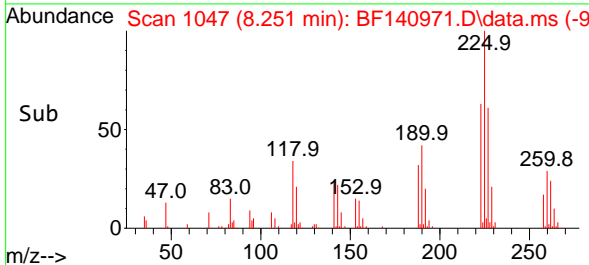
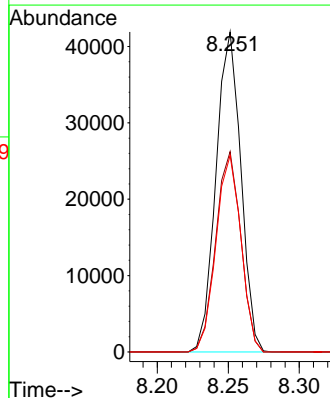
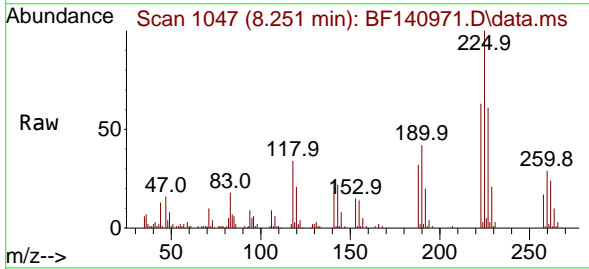
Ion	Ratio	Lower	Upper
127	100		
129	31.4	26.1	39.1
65	29.3	24.6	37.0
92	18.7	15.8	23.6

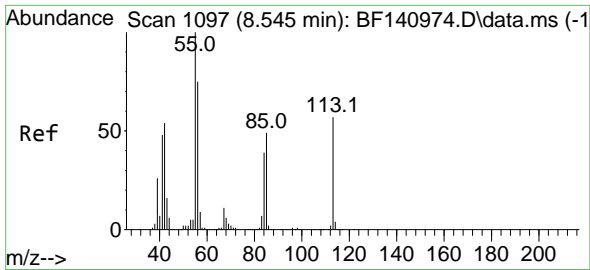


#34
 Hexachlorobutadiene
 Concen: 5.527 ng
 RT: 8.251 min Scan# 1047
 Delta R.T. 0.000 min
 Lab File: BF140971.D
 Acq: 26 Dec 2024 16:49

Tgt Ion:225 Resp: 51022

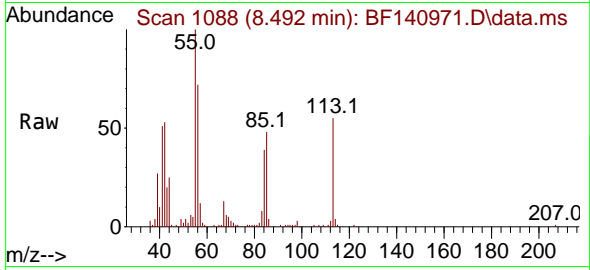
Ion	Ratio	Lower	Upper
225	100		
223	62.6	50.3	75.5
227	61.4	50.8	76.2



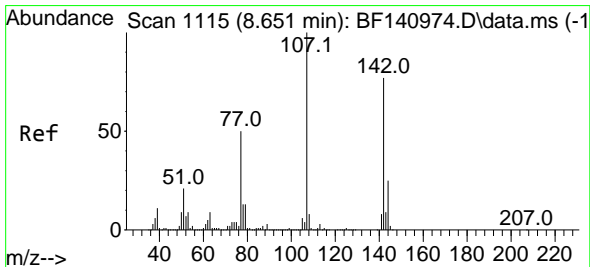
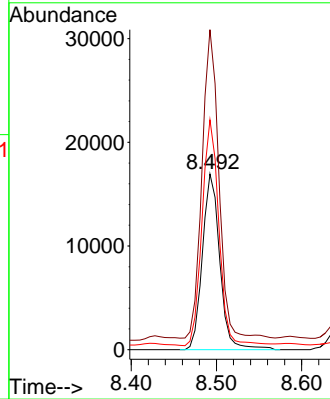
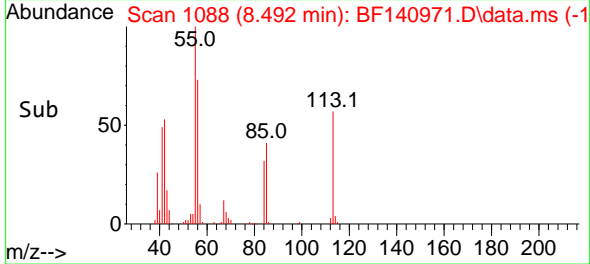


#35
 Caprolactam
 Concen: 5.102 ng
 RT: 8.492 min Scan# 1097
 Delta R.T. -0.053 min
 Lab File: BF140971.D
 Acq: 26 Dec 2024 16:49

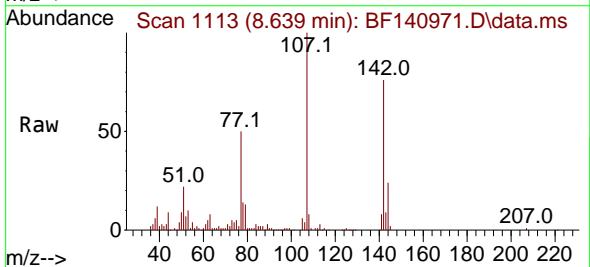
Instrument : BNA_F
 ClientSampleId : SSTDICC005



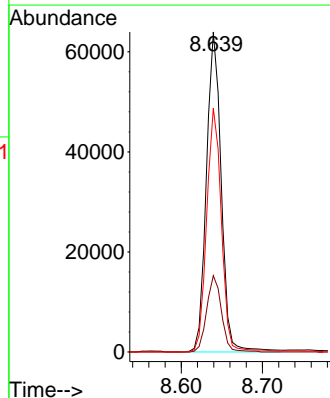
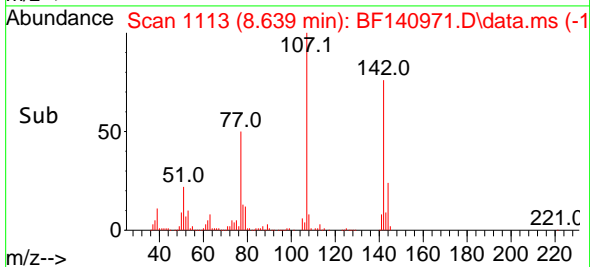
Tgt Ion:113 Resp: 23997
 Ion Ratio Lower Upper
 113 100
 55 182.2 156.6 196.6
 56 130.9 111.7 151.7

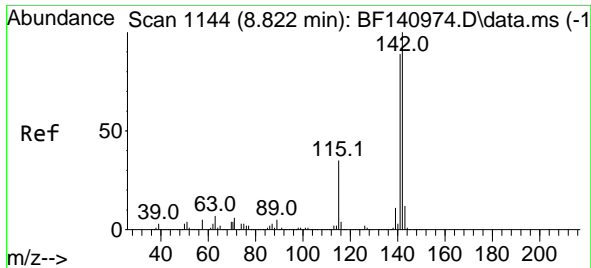


#36
 4-Chloro-3-methylphenol
 Concen: 5.271 ng
 RT: 8.639 min Scan# 1113
 Delta R.T. -0.012 min
 Lab File: BF140971.D
 Acq: 26 Dec 2024 16:49



Tgt Ion:107 Resp: 80975
 Ion Ratio Lower Upper
 107 100
 144 23.8 19.9 29.9
 142 76.2 61.8 92.8

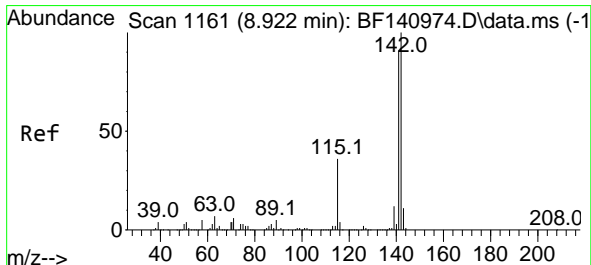
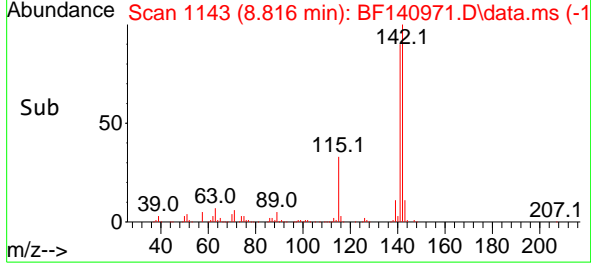
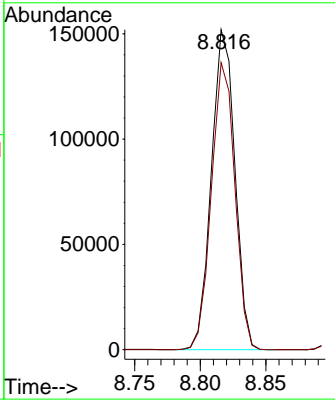
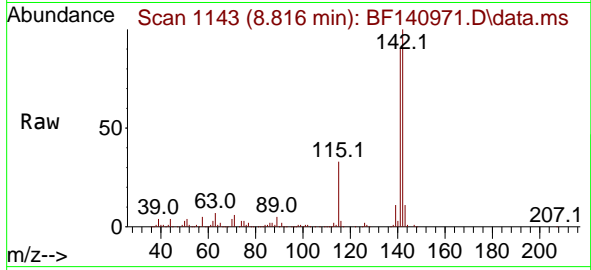




#37
 2-Methylnaphthalene
 Concen: 5.726 ng
 RT: 8.816 min Scan# 1143
 Delta R.T. -0.006 min
 Lab File: BF140971.D
 Acq: 26 Dec 2024 16:49

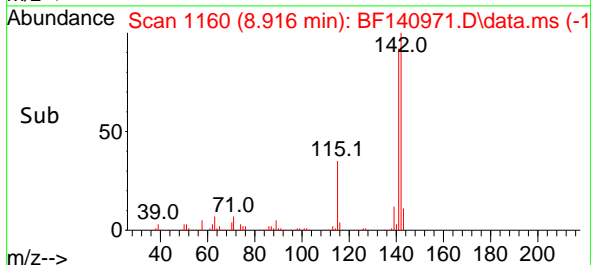
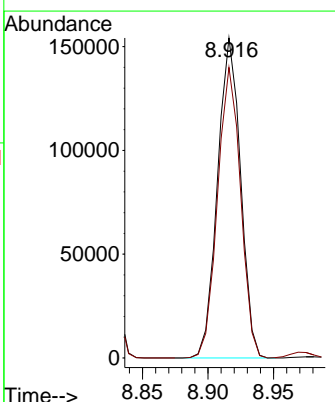
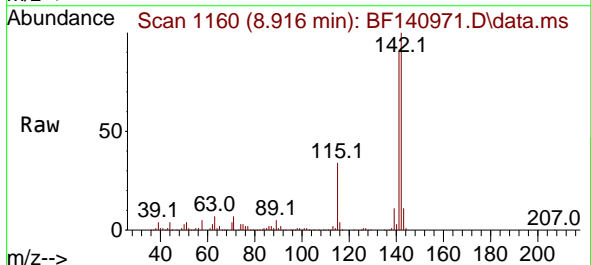
Instrument : BNA_F
 ClientSampleId : SSTDICC005

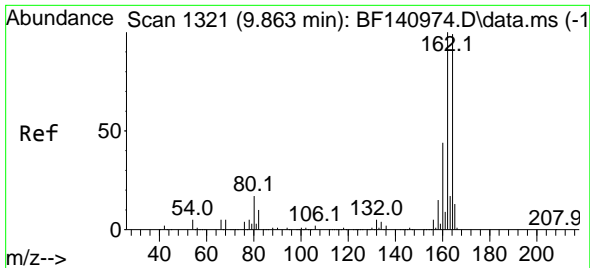
Tgt Ion:142 Resp: 189400
 Ion Ratio Lower Upper
 142 100
 141 89.7 71.1 106.7



#38
 1-Methylnaphthalene
 Concen: 5.788 ng
 RT: 8.916 min Scan# 1160
 Delta R.T. -0.006 min
 Lab File: BF140971.D
 Acq: 26 Dec 2024 16:49

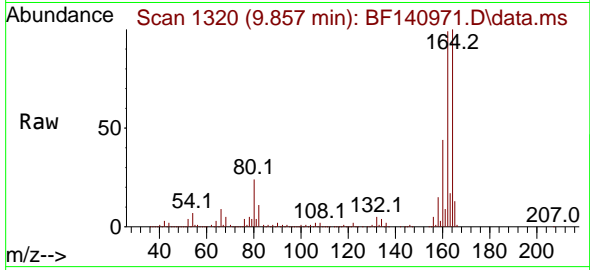
Tgt Ion:142 Resp: 188155
 Ion Ratio Lower Upper
 142 100
 141 90.8 72.7 109.1



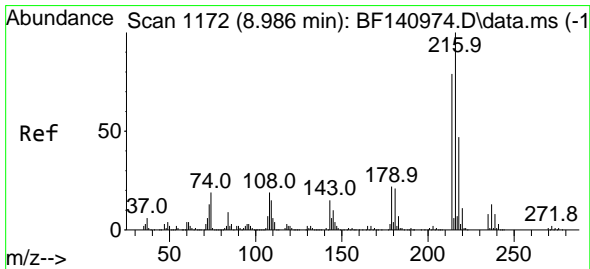
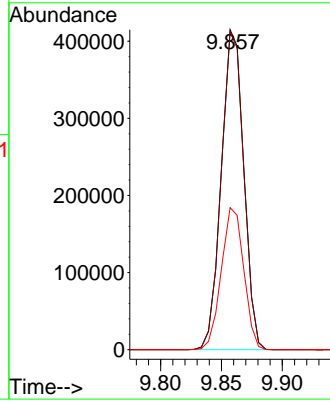
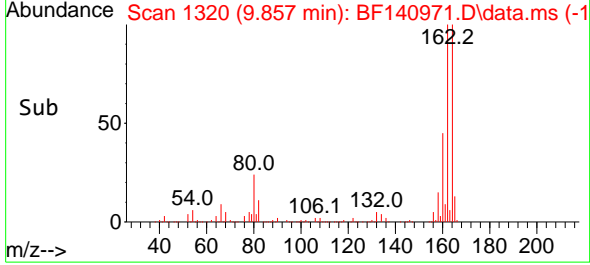


#39
 Acenaphthene-d10
 Concen: 20.000 ng
 RT: 9.857 min Scan# 11171
 Delta R.T. -0.006 min
 Lab File: BF140971.D
 Acq: 26 Dec 2024 16:49

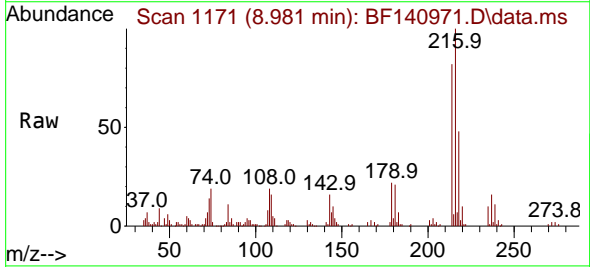
Instrument : BNA_F
 ClientSampleId : SSTDICC005



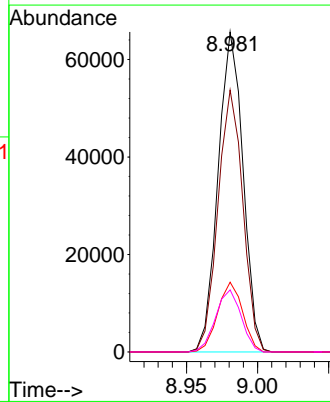
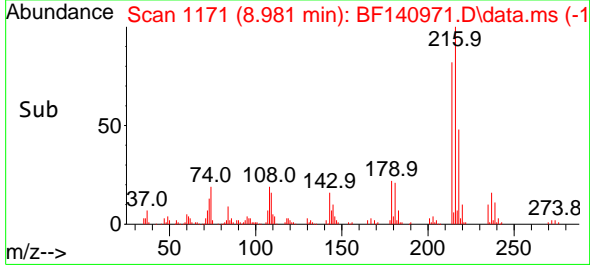
Tgt Ion:164 Resp: 532506
 Ion Ratio Lower Upper
 164 100
 162 99.4 80.6 120.8
 160 44.4 35.7 53.5

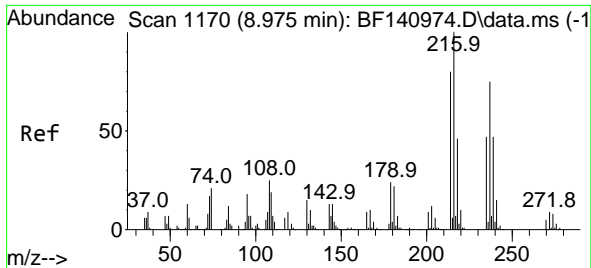


#40
 1,2,4,5-Tetrachlorobenzene
 Concen: 5.467 ng
 RT: 8.981 min Scan# 1171
 Delta R.T. -0.006 min
 Lab File: BF140971.D
 Acq: 26 Dec 2024 16:49



Tgt Ion:216 Resp: 80086
 Ion Ratio Lower Upper
 216 100
 214 81.5 63.0 94.6
 179 21.9 17.9 26.9
 108 19.9 16.2 24.2





#41
 Hexachlorocyclopentadiene
 Concen: 4.531 ng
 RT: 8.975 min Scan# 11170
 Delta R.T. 0.000 min
 Lab File: BF140971.D
 Acq: 26 Dec 2024 16:49

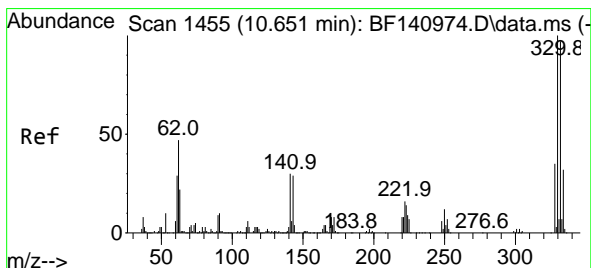
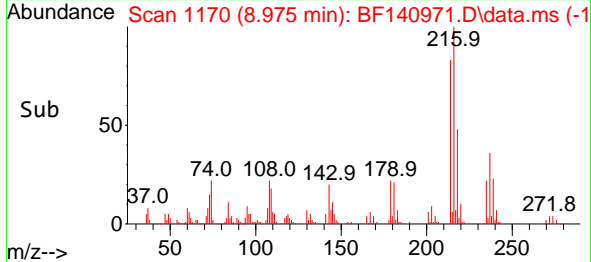
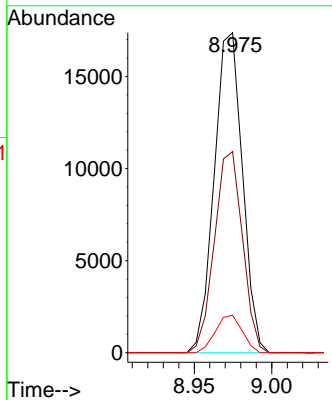
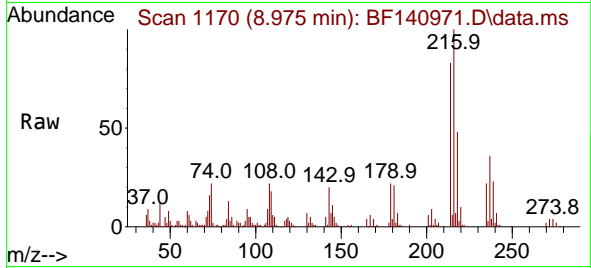
Instrument :

BNA_F

ClientSampleId :

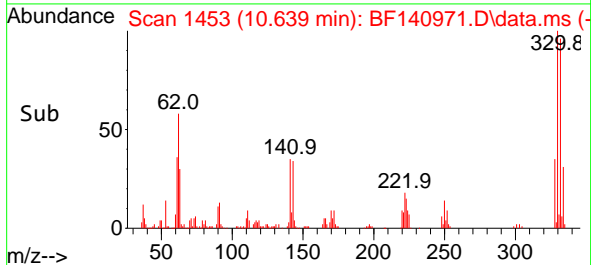
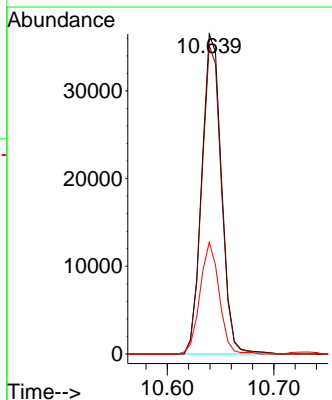
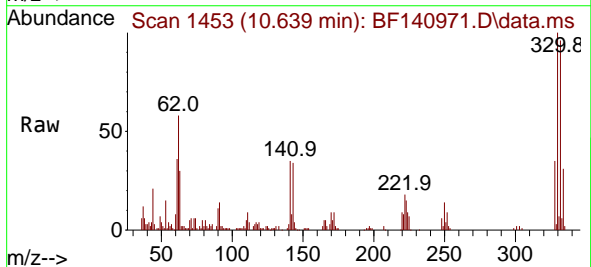
SSTDICC005

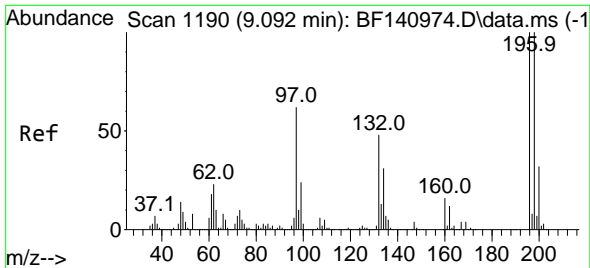
Tgt Ion	Resp	Lower	Upper
237	100		
235	62.9	43.4	83.4
272	11.7	0.0	32.6



#42
 2,4,6-Tribromophenol
 Concen: 9.085 ng
 RT: 10.639 min Scan# 1453
 Delta R.T. -0.012 min
 Lab File: BF140971.D
 Acq: 26 Dec 2024 16:49

Tgt Ion	Resp	Lower	Upper
330	100		
332	96.1	78.0	117.0
141	33.9	26.4	39.6



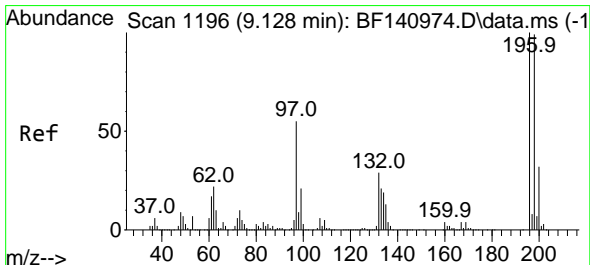
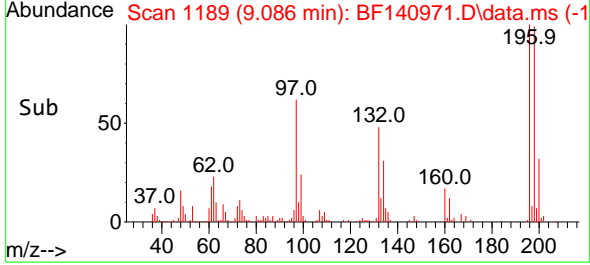
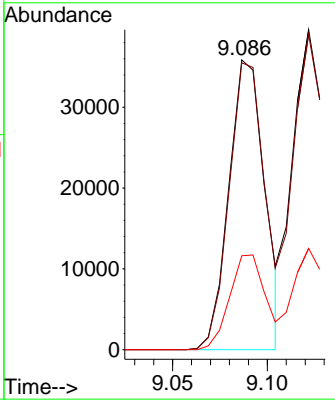
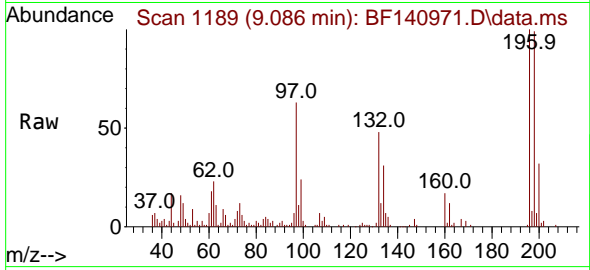


#43
 2,4,6-Trichlorophenol
 Concen: 4.837 ng
 RT: 9.086 min Scan# 1119
 Delta R.T. -0.006 min
 Lab File: BF140971.D
 Acq: 26 Dec 2024 16:49

Instrument : BNA_F
 ClientSampleId : SSTDICC005

Tgt Ion:196 Resp: 47166

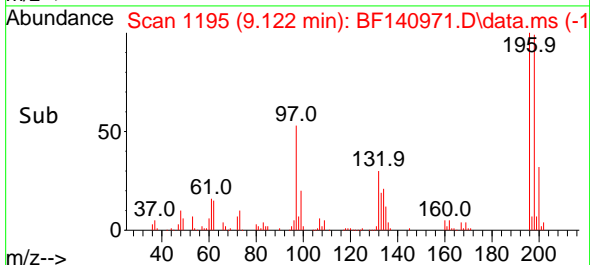
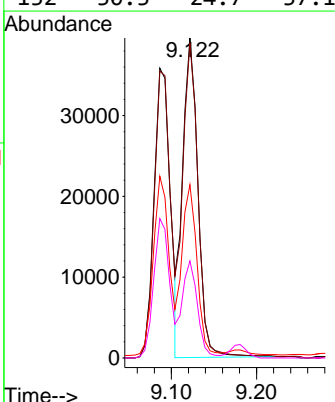
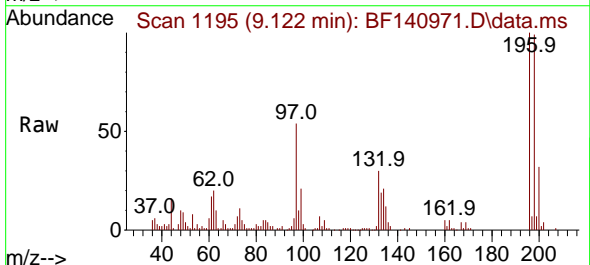
Ion	Ratio	Lower	Upper
196	100		
198	99.0	80.2	120.4
200	32.4	25.8	38.6

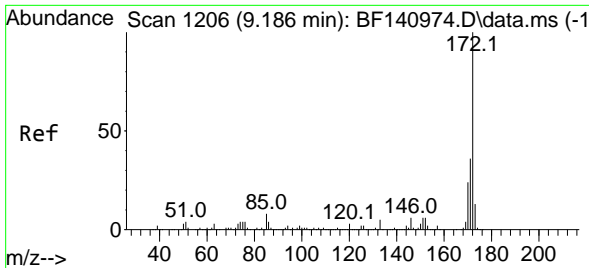


#44
 2,4,5-Trichlorophenol
 Concen: 4.955 ng
 RT: 9.122 min Scan# 1195
 Delta R.T. -0.006 min
 Lab File: BF140971.D
 Acq: 26 Dec 2024 16:49

Tgt Ion:196 Resp: 49432

Ion	Ratio	Lower	Upper
196	100		
198	98.5	79.9	119.9
97	54.2	44.3	66.5
132	30.3	24.7	37.1





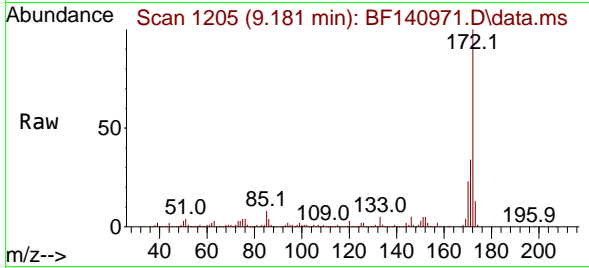
#45
 2-Fluorobiphenyl
 Concen: 12.312 ng
 RT: 9.181 min Scan# 11
 Delta R.T. -0.006 min
 Lab File: BF140971.D
 Acq: 26 Dec 2024 16:49

Instrument :

BNA_F

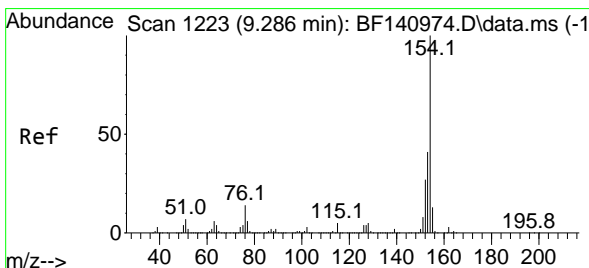
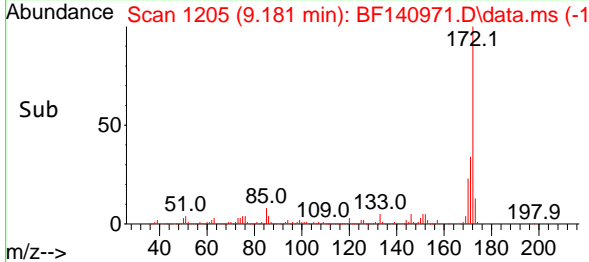
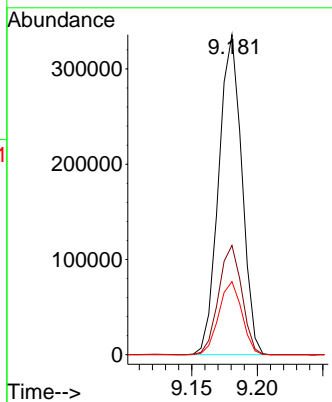
ClientSampleId :

SSTDICC005



Tgt Ion:172 Resp: 411497

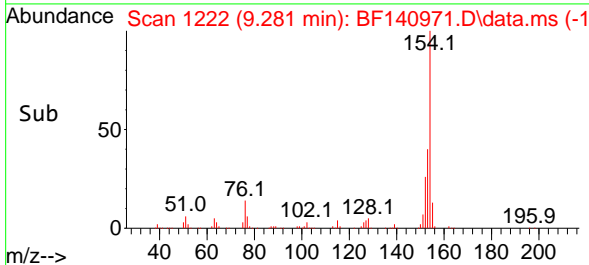
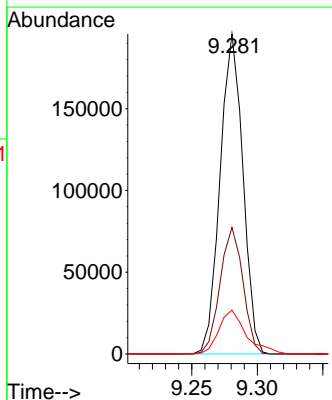
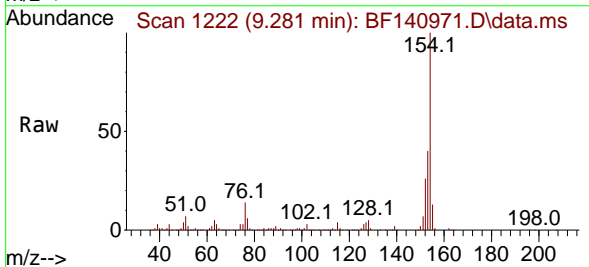
Ion	Ratio	Lower	Upper
172	100		
171	34.1	29.0	43.4
170	22.8	19.6	29.4

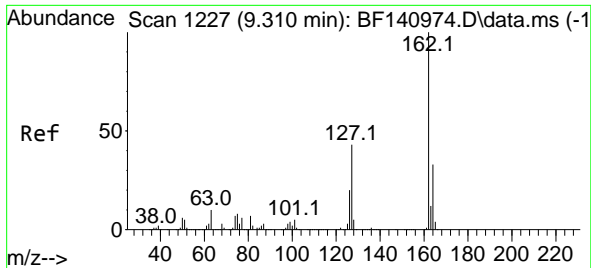


#46
 1,1'-Biphenyl
 Concen: 5.797 ng
 RT: 9.281 min Scan# 1222
 Delta R.T. -0.005 min
 Lab File: BF140971.D
 Acq: 26 Dec 2024 16:49

Tgt Ion:154 Resp: 236377

Ion	Ratio	Lower	Upper
154	100		
153	39.5	20.9	60.9
76	13.7	0.0	34.0





#47
 2-Chloronaphthalene
 Concen: 5.732 ng
 RT: 9.304 min Scan# 11
 Delta R.T. -0.006 min
 Lab File: BF140971.D
 Acq: 26 Dec 2024 16:49

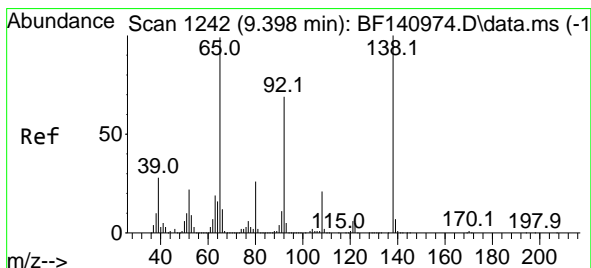
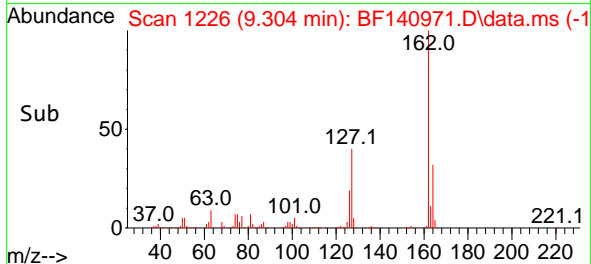
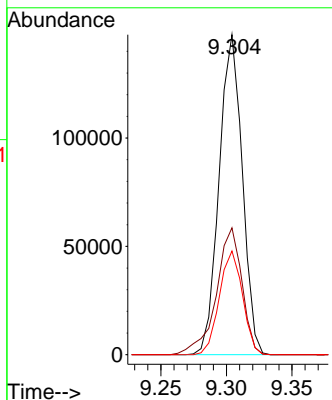
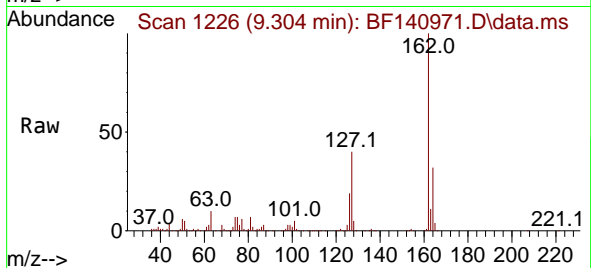
Instrument :

BNA_F

ClientSampleId :

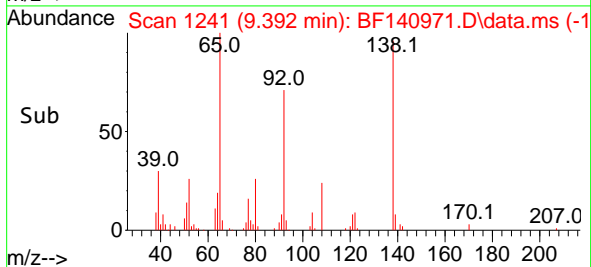
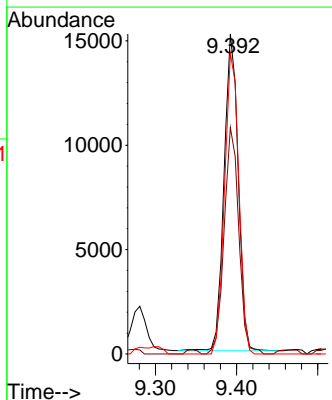
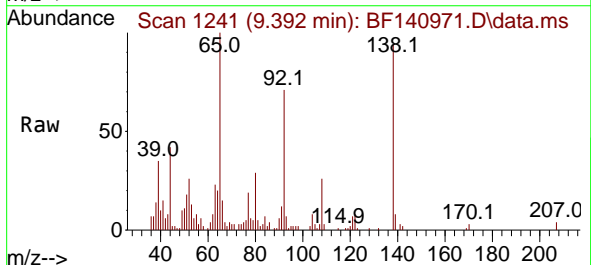
SSTDICC005

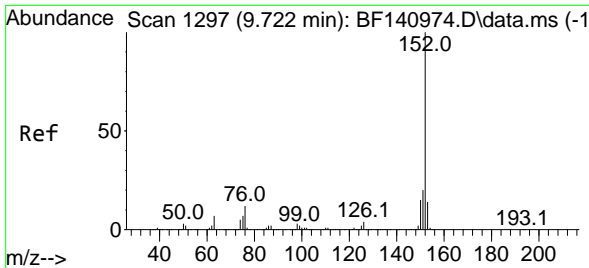
Tgt Ion:162 Resp: 181255
 Ion Ratio Lower Upper
 162 100
 127 39.7 34.2 51.4
 164 32.4 26.6 40.0



#48
 2-Nitroaniline
 Concen: 6.658 ng
 RT: 9.392 min Scan# 1241
 Delta R.T. -0.006 min
 Lab File: BF140971.D
 Acq: 26 Dec 2024 16:49

Tgt Ion: 65 Resp: 18450
 Ion Ratio Lower Upper
 65 100
 92 70.7 55.6 83.4
 138 93.9 80.5 120.7



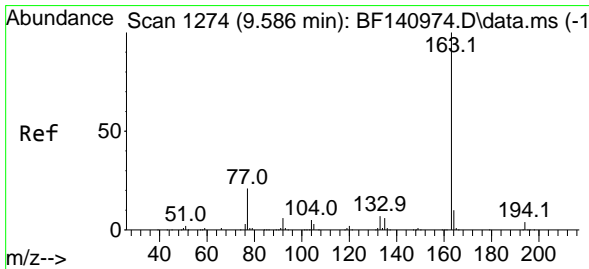
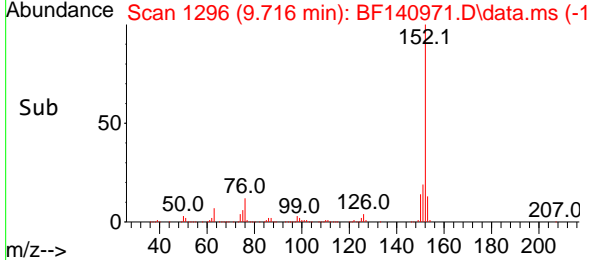
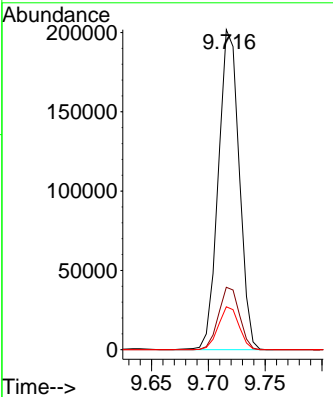
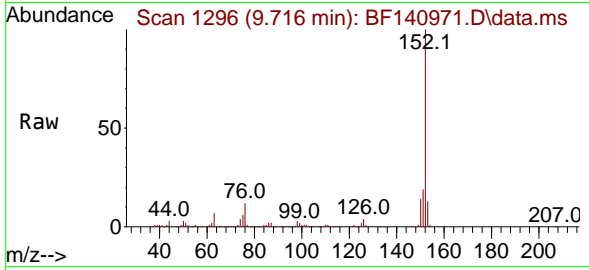


#49
 Acenaphthylene
 Concen: 5.656 ng
 RT: 9.716 min Scan# 11
 Delta R.T. -0.006 min
 Lab File: BF140971.D
 Acq: 26 Dec 2024 16:49

Instrument : BNA_F
 ClientSampleId : SSTDICC005

Tgt Ion:152 Resp: 257474

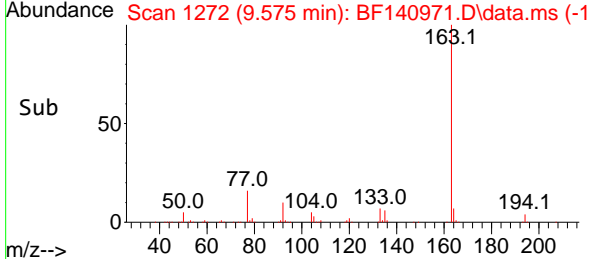
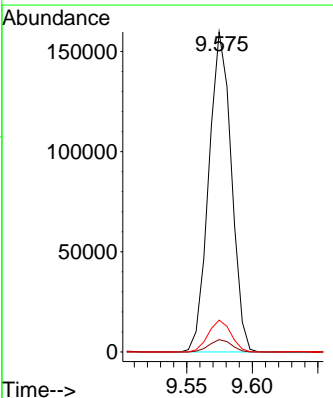
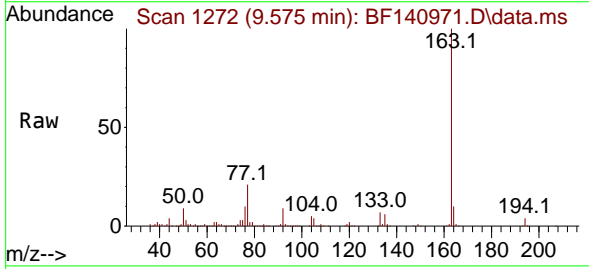
Ion	Ratio	Lower	Upper
152	100		
151	19.5	16.2	24.4
153	13.4	11.4	17.0

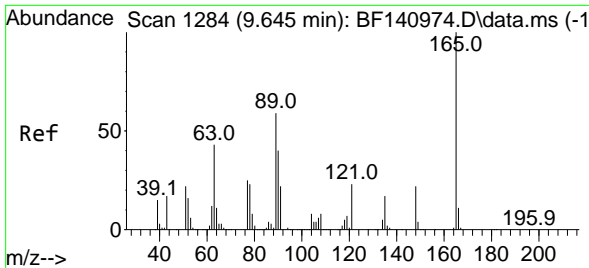


#50
 Dimethylphthalate
 Concen: 5.465 ng
 RT: 9.575 min Scan# 1272
 Delta R.T. -0.011 min
 Lab File: BF140971.D
 Acq: 26 Dec 2024 16:49

Tgt Ion:163 Resp: 191408

Ion	Ratio	Lower	Upper
163	100		
194	3.8	3.1	4.7
164	10.0	8.3	12.5



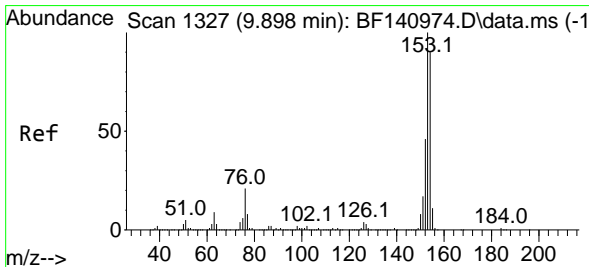
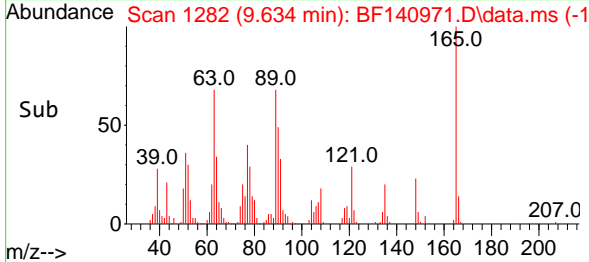
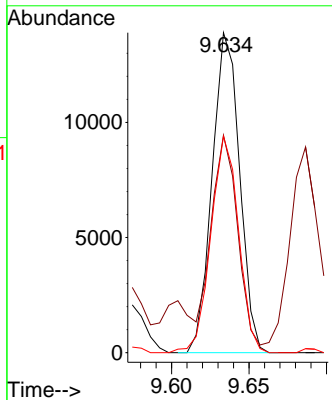
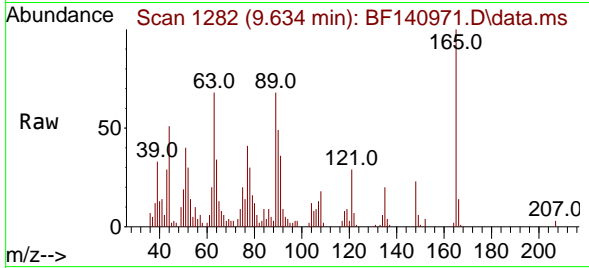


#51
 2,6-Dinitrotoluene
 Concen: 5.865 ng
 RT: 9.634 min Scan# 11
 Delta R.T. -0.011 min
 Lab File: BF140971.D
 Acq: 26 Dec 2024 16:49

Instrument : BNA_F
 ClientSampleId : SSTDICC005

Tgt Ion:165 Resp: 17091

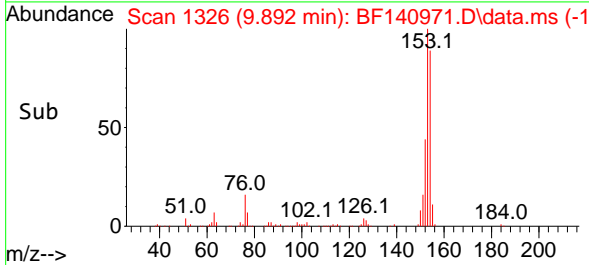
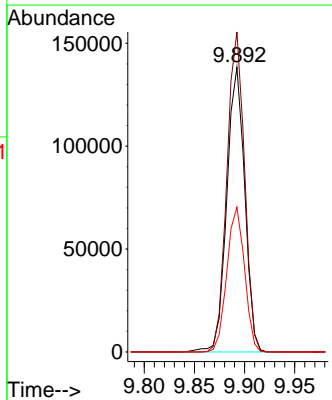
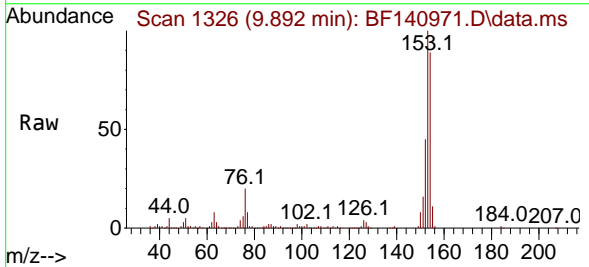
Ion	Ratio	Lower	Upper
165	100		
63	67.9	47.1	70.7
89	67.7	47.0	70.4

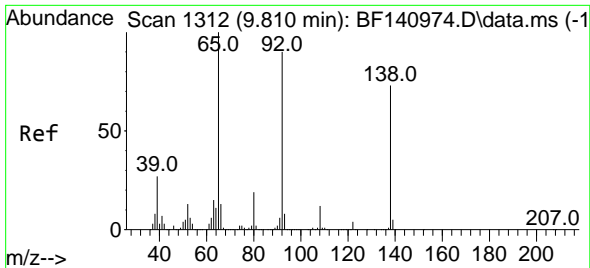


#52
 Acenaphthene
 Concen: 5.576 ng
 RT: 9.892 min Scan# 1326
 Delta R.T. -0.006 min
 Lab File: BF140971.D
 Acq: 26 Dec 2024 16:49

Tgt Ion:154 Resp: 171603

Ion	Ratio	Lower	Upper
154	100		
153	112.4	89.2	133.8
152	50.8	40.9	61.3

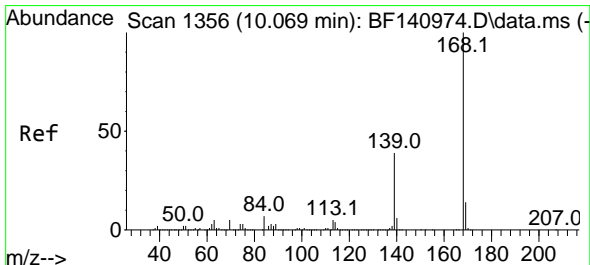
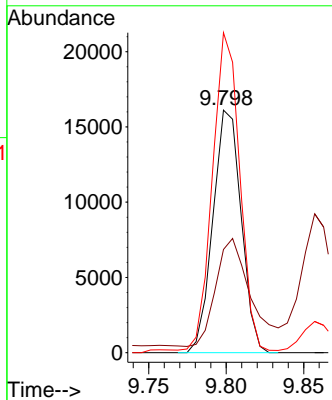
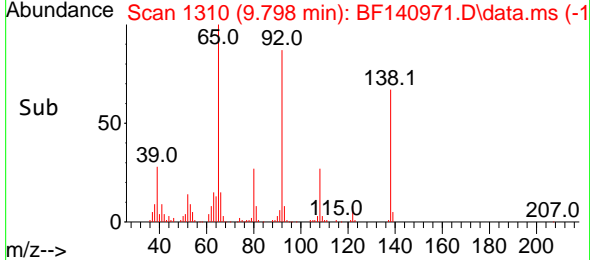
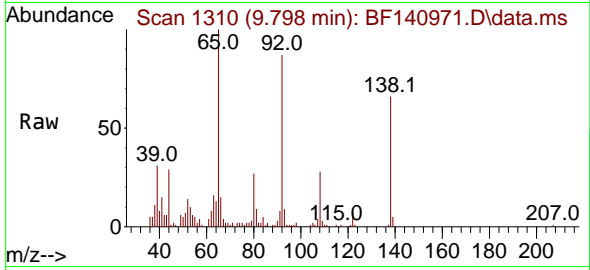




#53
 3-Nitroaniline
 Concen: 5.713 ng
 RT: 9.798 min Scan# 11
 Delta R.T. -0.012 min
 Lab File: BF140971.D
 Acq: 26 Dec 2024 16:49

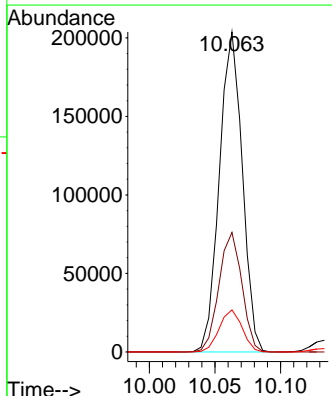
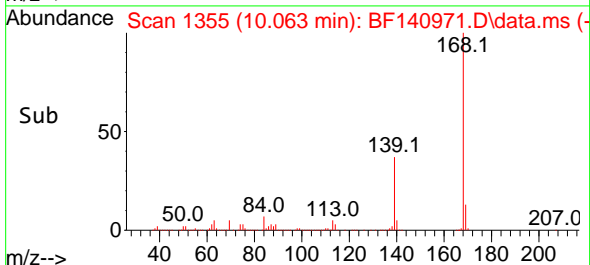
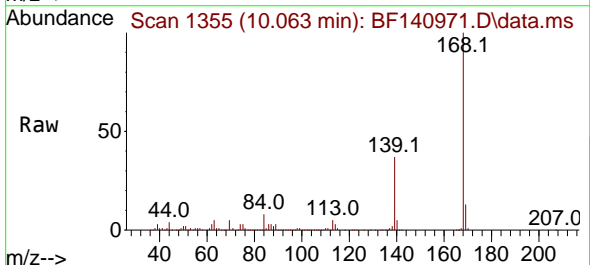
Instrument : BNA_F
 ClientSampleId : SSTDICC005

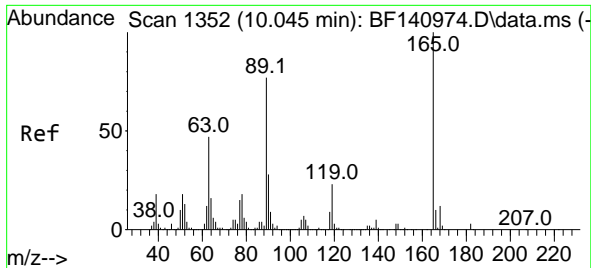
Tgt Ion	Resp	Lower	Upper
138	100		
108	42.5	13.5	20.3#
92	131.9	97.7	146.5



#55
 Dibenzofuran
 Concen: 5.715 ng
 RT: 10.063 min Scan# 1355
 Delta R.T. -0.006 min
 Lab File: BF140971.D
 Acq: 26 Dec 2024 16:49

Tgt Ion	Resp	Lower	Upper
168	100		
139	37.4	31.6	47.4
169	13.1	11.0	16.6





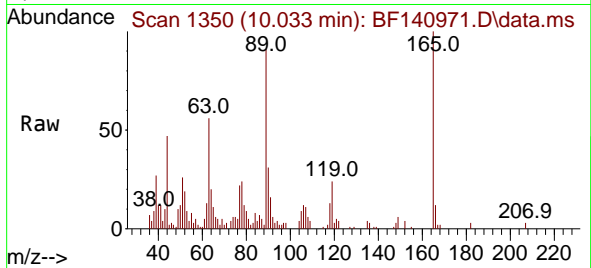
#57
 2,4-Dinitrotoluene
 Concen: 6.371 ng
 RT: 10.033 min Scan# 11
 Delta R.T. -0.012 min
 Lab File: BF140971.D
 Acq: 26 Dec 2024 16:49

Instrument :

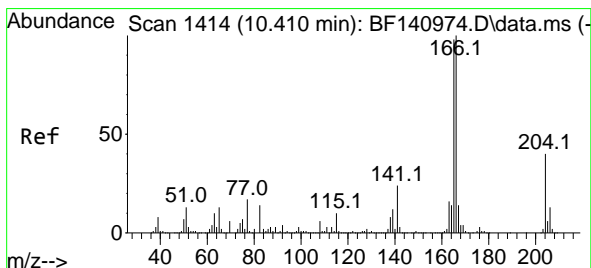
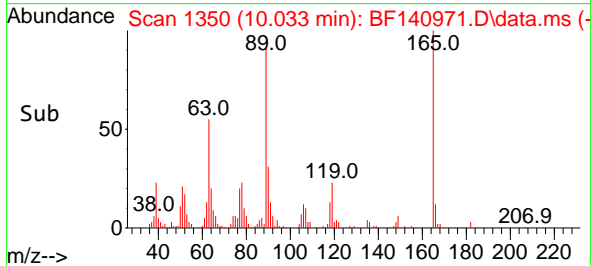
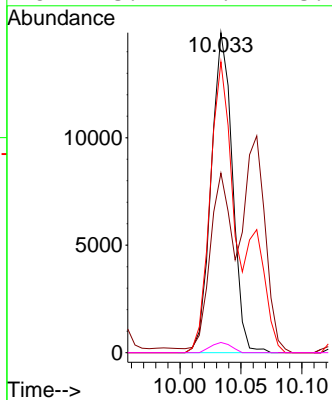
BNA_F

ClientSampleId :

SSTDICC005

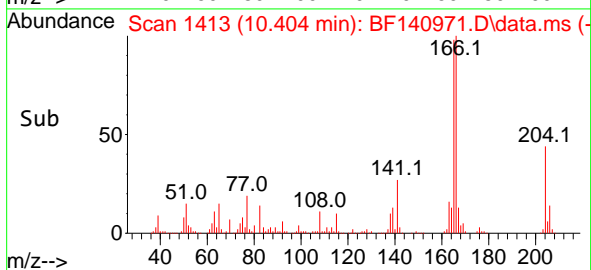
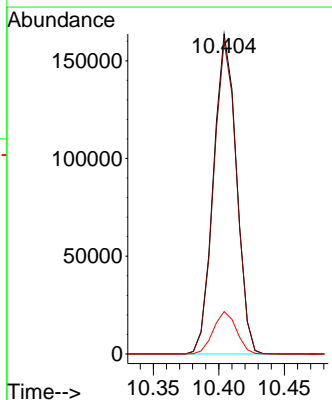
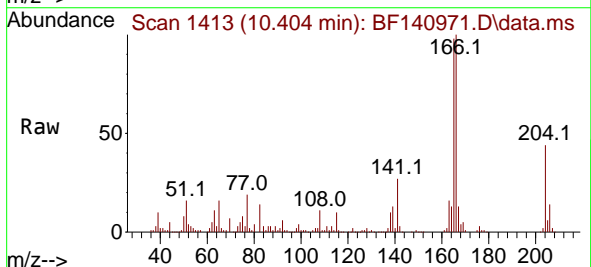


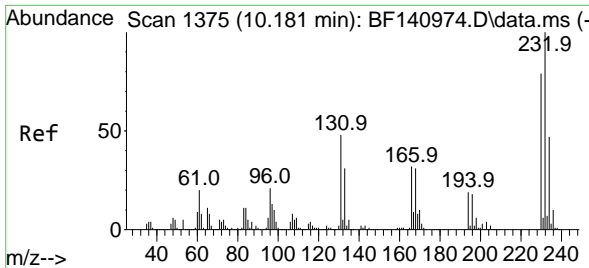
Tgt Ion:165 Resp: 18052
 Ion Ratio Lower Upper
 165 100
 63 56.1 38.1 57.1
 89 90.9 61.4 92.2
 182 3.2 2.1 3.1#



#58
 Fluorene
 Concen: 5.943 ng
 RT: 10.404 min Scan# 1413
 Delta R.T. -0.006 min
 Lab File: BF140971.D
 Acq: 26 Dec 2024 16:49

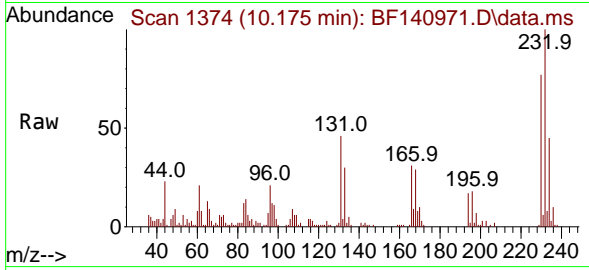
Tgt Ion:166 Resp: 199322
 Ion Ratio Lower Upper
 166 100
 165 97.7 78.3 117.5
 167 13.3 10.9 16.3



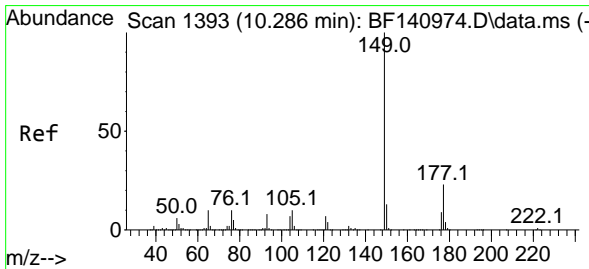
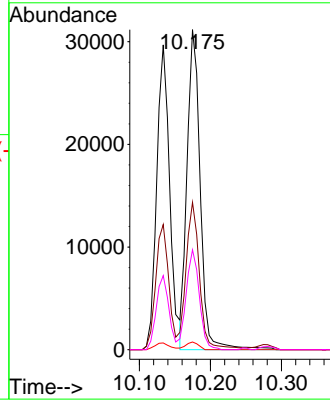
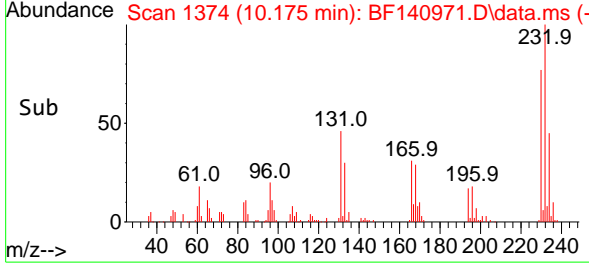


#59
 2,3,4,6-Tetrachlorophenol
 Concen: 4.882 ng
 RT: 10.175 min Scan# 1374
 Delta R.T. -0.006 min
 Lab File: BF140971.D
 Acq: 26 Dec 2024 16:49

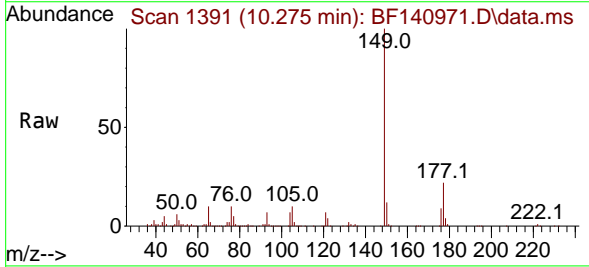
Instrument : BNA_F
 ClientSampleId : SSTDICC005



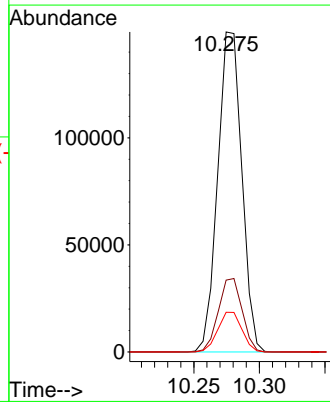
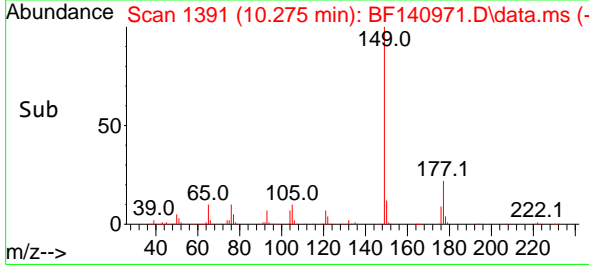
Tgt Ion:232 Resp: 40337
 Ion Ratio Lower Upper
 232 100
 131 47.2 37.4 56.2
 130 2.3 1.8 2.8
 166 31.1 24.8 37.2

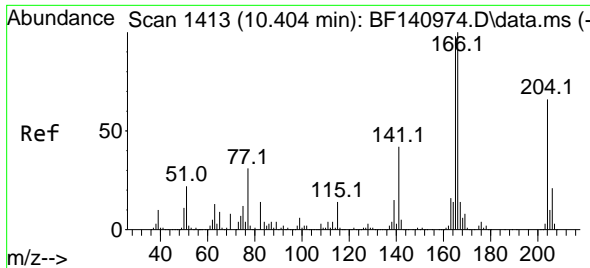


#60
 Diethylphthalate
 Concen: 5.518 ng
 RT: 10.275 min Scan# 1391
 Delta R.T. -0.012 min
 Lab File: BF140971.D
 Acq: 26 Dec 2024 16:49



Tgt Ion:149 Resp: 190810
 Ion Ratio Lower Upper
 149 100
 177 22.4 18.3 27.5
 150 12.4 10.4 15.6

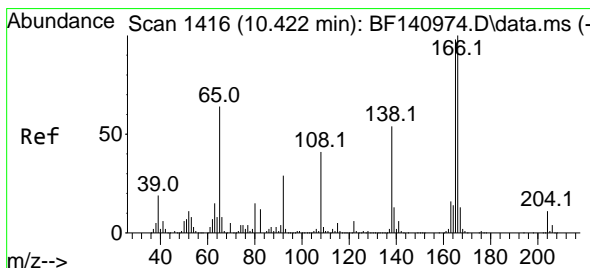
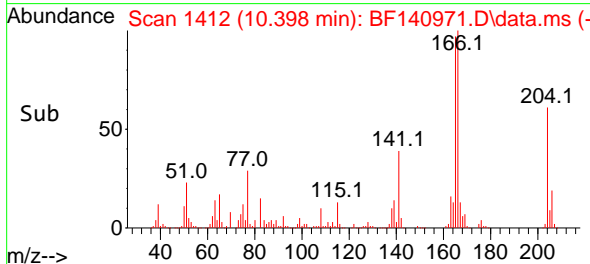
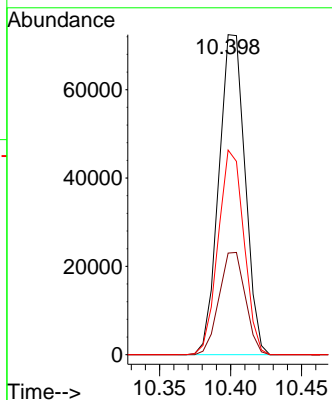
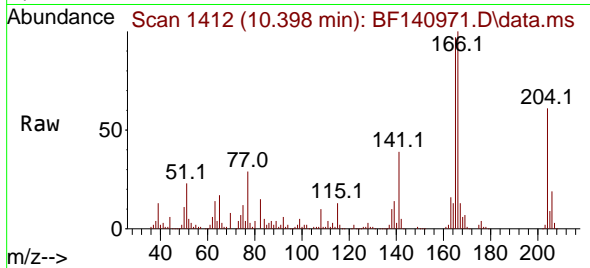




#61
 4-Chlorophenyl-phenylether
 Concen: 5.773 ng
 RT: 10.398 min Scan# 1412
 Delta R.T. -0.006 min
 Lab File: BF140971.D
 Acq: 26 Dec 2024 16:49

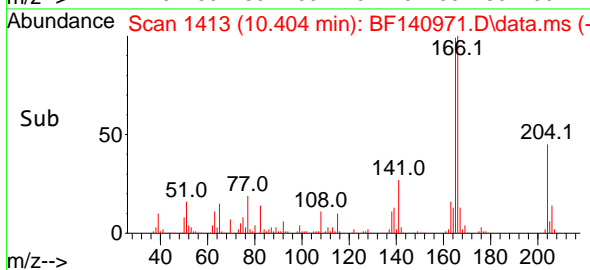
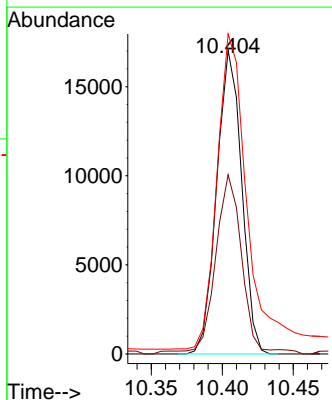
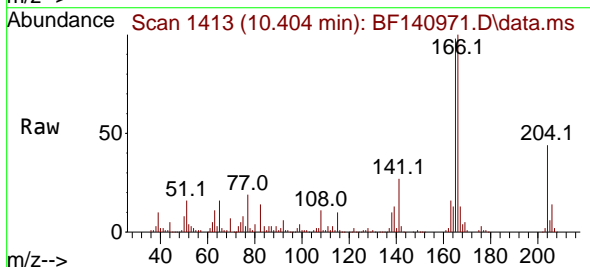
Instrument : BNA_F
 ClientSampleId : SSTDICC005

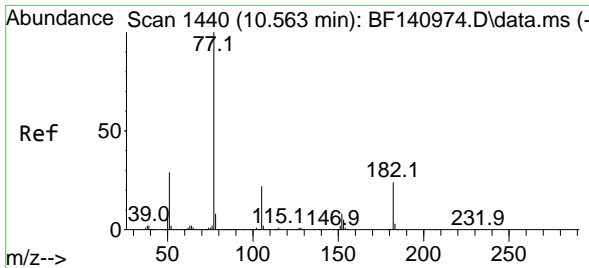
Tgt Ion	Resp	Lower	Upper
204	93161	100	
206	31.8	25.8	38.6
141	64.0	51.2	76.8



#62
 4-Nitroaniline
 Concen: 5.839 ng
 RT: 10.404 min Scan# 1413
 Delta R.T. -0.018 min
 Lab File: BF140971.D
 Acq: 26 Dec 2024 16:49

Tgt Ion	Resp	Lower	Upper
138	20793	100	
92	59.1	34.8	74.8
108	105.4	55.9	95.9



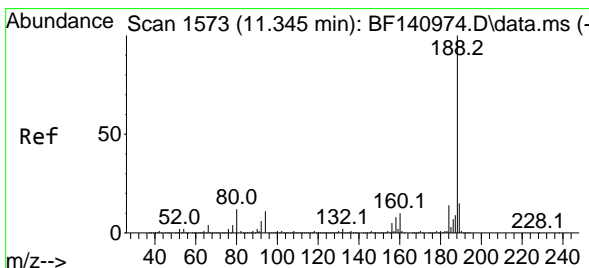
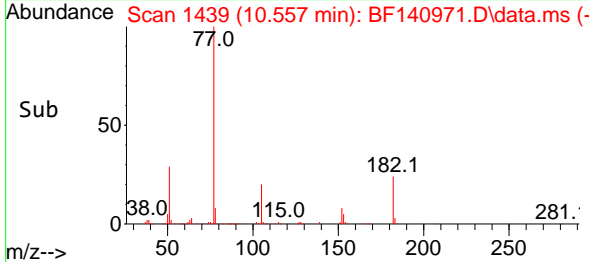
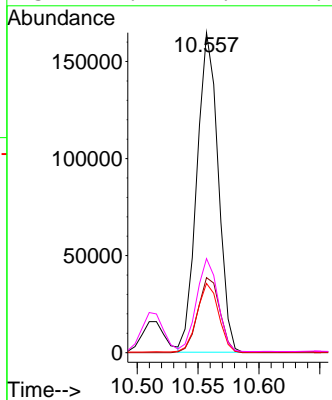
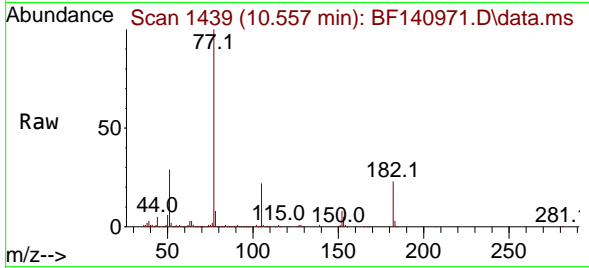


#63
 Azobenzene
 Concen: 5.508 ng
 RT: 10.557 min Scan# 14
 Delta R.T. -0.006 min
 Lab File: BF140971.D
 Acq: 26 Dec 2024 16:49

Instrument : BNA_F
 ClientSampleId : SSTDICC005

Tgt Ion: 77 Resp: 199905

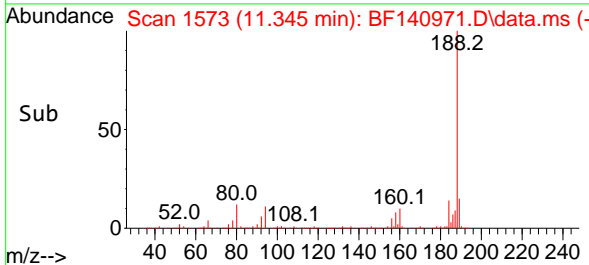
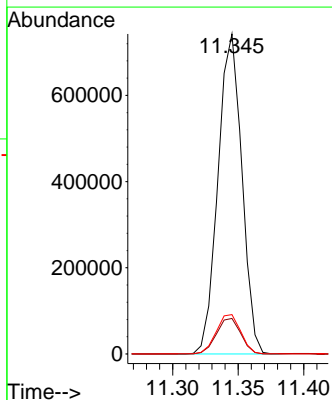
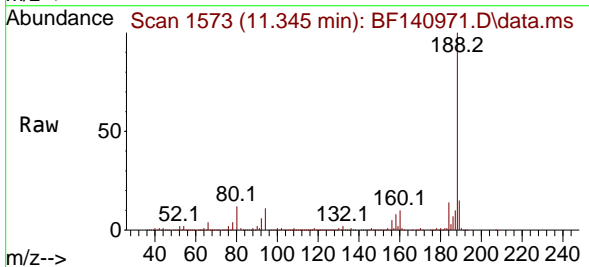
Ion	Ratio	Lower	Upper
77	100		
182	23.5	4.1	44.1
105	21.7	1.8	41.8
51	29.4	9.7	49.7

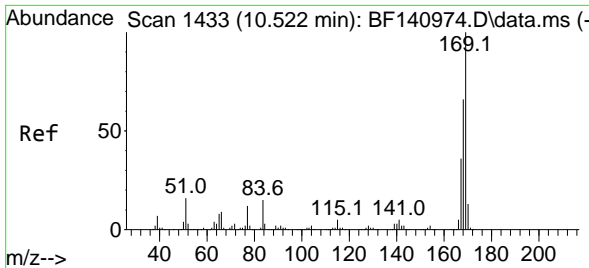


#64
 Phenanthrene-d10
 Concen: 20.000 ng
 RT: 11.345 min Scan# 1573
 Delta R.T. 0.000 min
 Lab File: BF140971.D
 Acq: 26 Dec 2024 16:49

Tgt Ion: 188 Resp: 938555

Ion	Ratio	Lower	Upper
188	100		
94	11.1	9.0	13.6
80	12.3	9.8	14.6





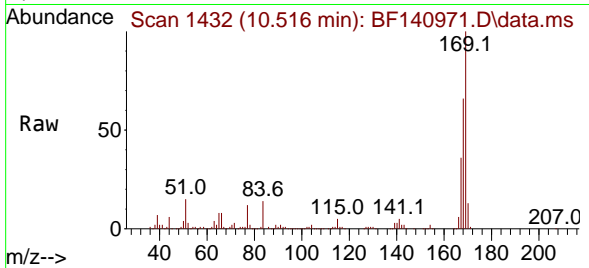
#66
 n-Nitrosodiphenylamine
 Concen: 5.654 ng
 RT: 10.516 min Scan# 1432
 Delta R.T. -0.006 min
 Lab File: BF140971.D
 Acq: 26 Dec 2024 16:49

Instrument :

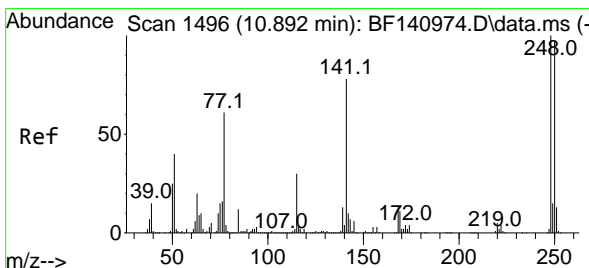
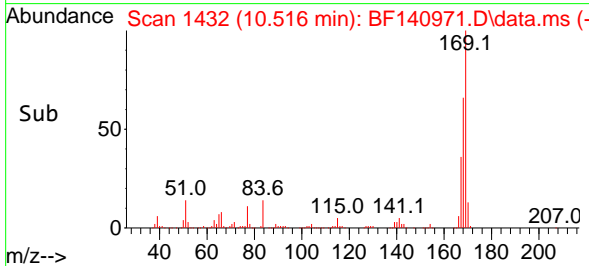
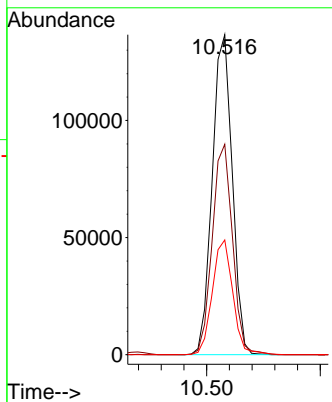
BNA_F

ClientSampleId :

SSTDICC005

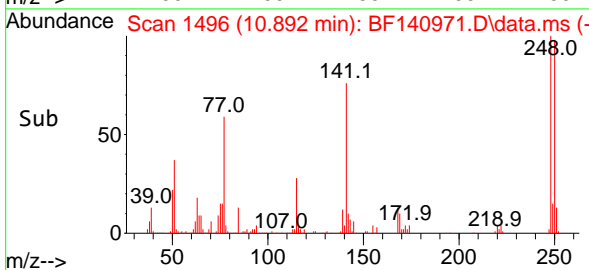
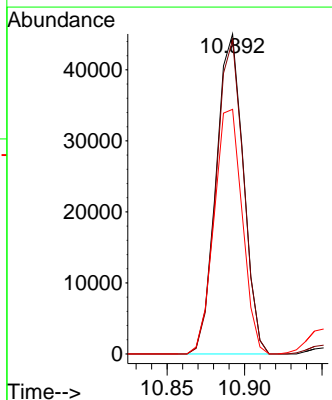
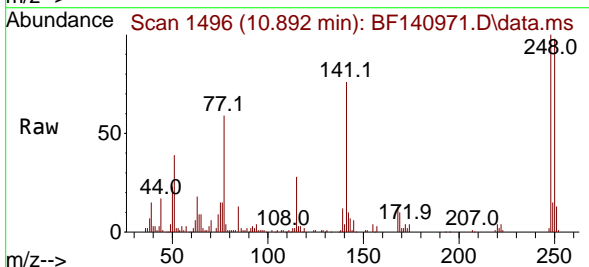


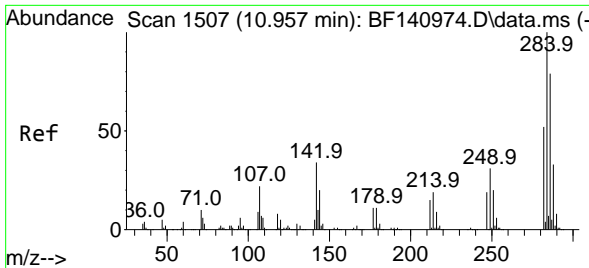
Tgt Ion:169 Resp: 167108
 Ion Ratio Lower Upper
 169 100
 168 65.8 52.6 79.0
 167 35.8 29.0 43.4



#67
 4-Bromophenyl-phenylether
 Concen: 5.442 ng
 RT: 10.892 min Scan# 1496
 Delta R.T. 0.000 min
 Lab File: BF140971.D
 Acq: 26 Dec 2024 16:49

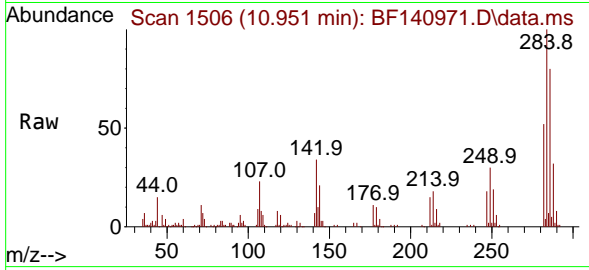
Tgt Ion:248 Resp: 55213
 Ion Ratio Lower Upper
 248 100
 250 98.2 77.7 116.5
 141 76.4 62.1 93.1



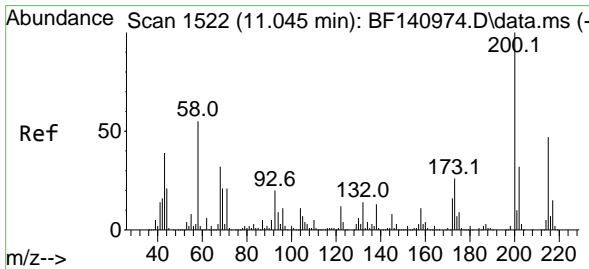
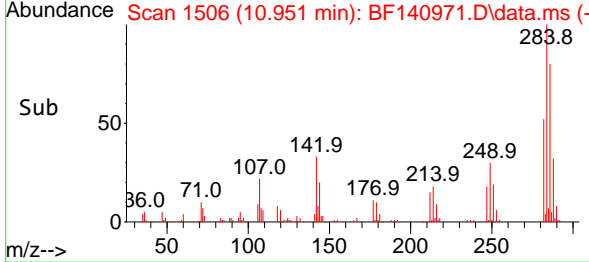
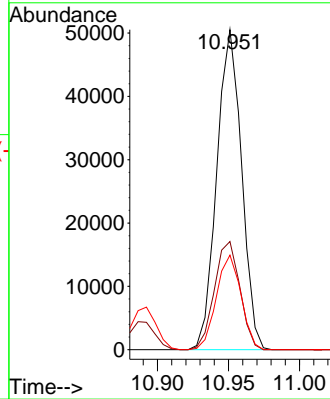


#68
 Hexachlorobenzene
 Concen: 5.483 ng
 RT: 10.951 min Scan# 1506
 Delta R.T. -0.006 min
 Lab File: BF140971.D
 Acq: 26 Dec 2024 16:49

Instrument : BNA_F
 ClientSampleId : SSTDICC005

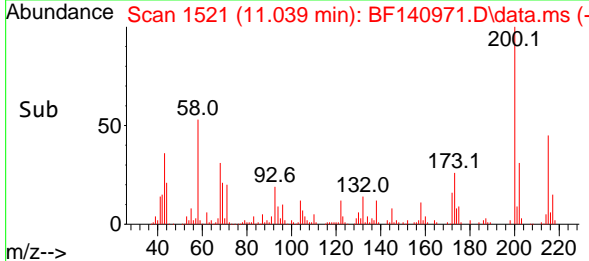
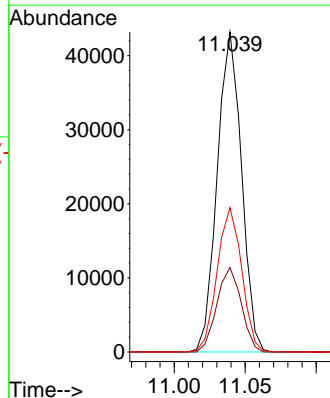
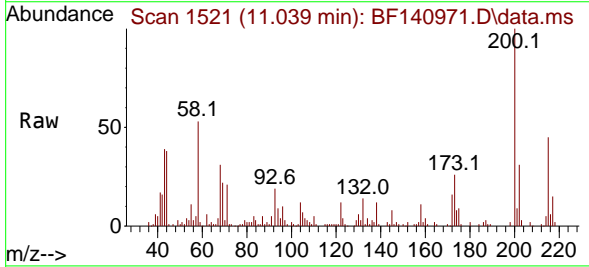


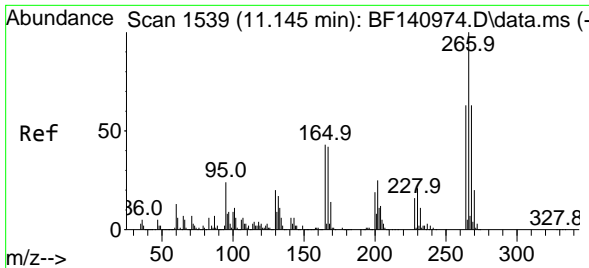
Tgt Ion:284 Resp: 61339
 Ion Ratio Lower Upper
 284 100
 142 33.8 27.1 40.7
 249 29.6 25.1 37.7



#69
 Atrazine
 Concen: 6.209 ng
 RT: 11.039 min Scan# 1521
 Delta R.T. -0.006 min
 Lab File: BF140971.D
 Acq: 26 Dec 2024 16:49

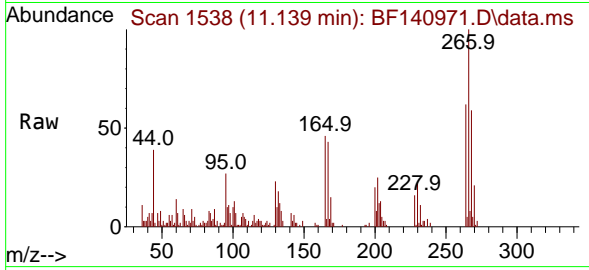
Tgt Ion:200 Resp: 51263
 Ion Ratio Lower Upper
 200 100
 173 26.4 6.4 46.4
 215 45.1 27.2 67.2



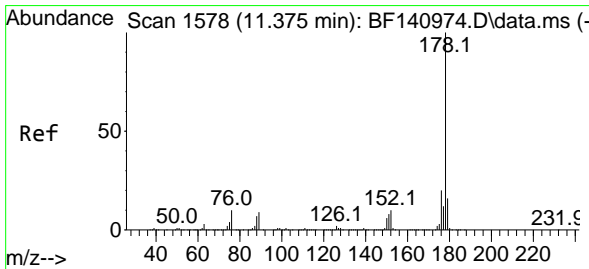
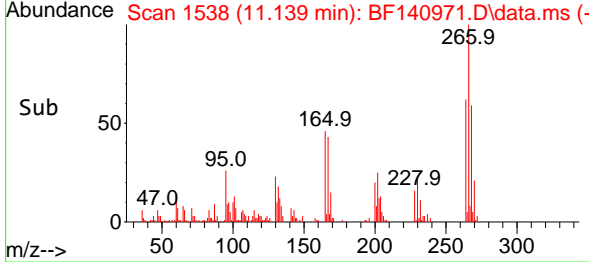
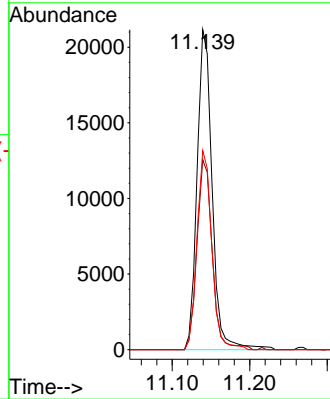


#70
 Pentachlorophenol
 Concen: 4.096 ng
 RT: 11.139 min Scan# 111
 Delta R.T. -0.006 min
 Lab File: BF140971.D
 Acq: 26 Dec 2024 16:49

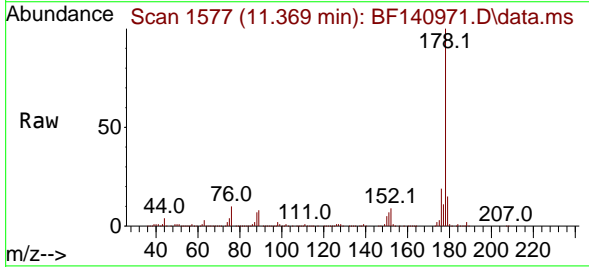
Instrument : BNA_F
 ClientSampleId : SSTDICC005



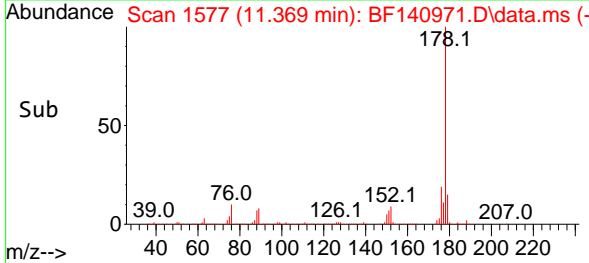
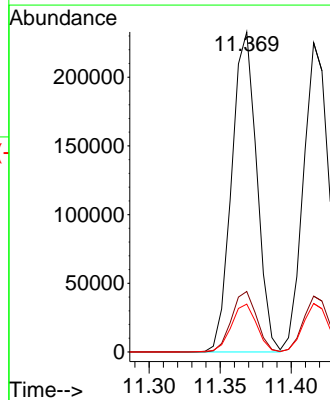
Tgt Ion:266 Resp: 28530
 Ion Ratio Lower Upper
 266 100
 268 59.3 50.5 75.7
 264 62.2 50.2 75.4

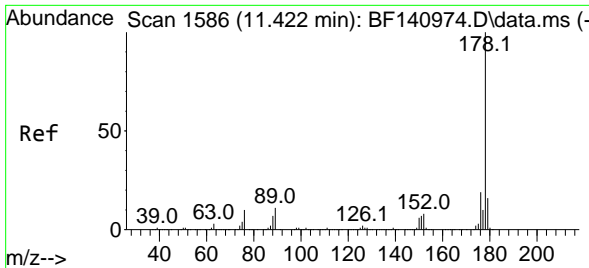


#71
 Phenanthrene
 Concen: 5.799 ng
 RT: 11.369 min Scan# 1577
 Delta R.T. -0.006 min
 Lab File: BF140971.D
 Acq: 26 Dec 2024 16:49



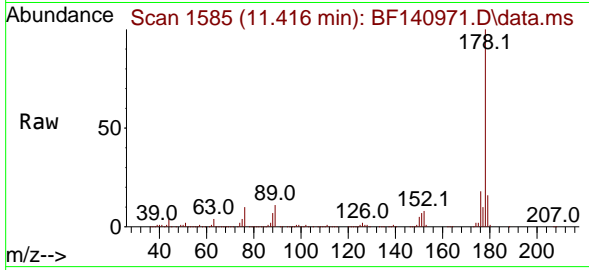
Tgt Ion:178 Resp: 286441
 Ion Ratio Lower Upper
 178 100
 176 18.9 15.8 23.6
 179 15.0 12.6 19.0



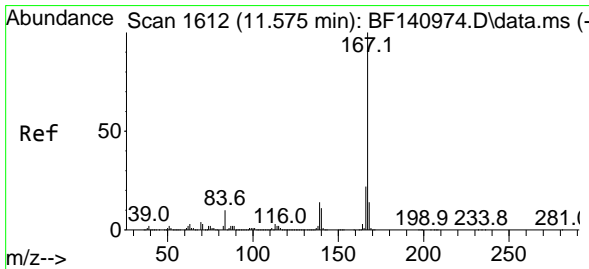
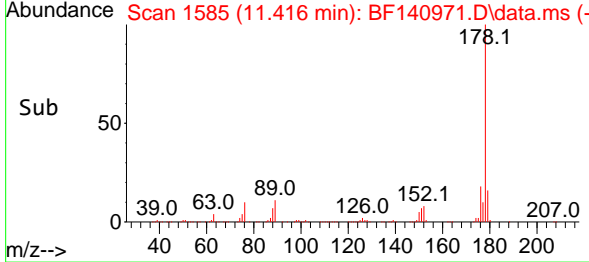
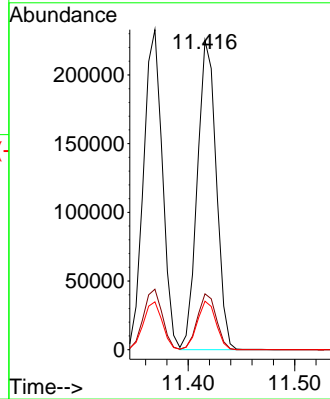


#72
 Anthracene
 Concen: 5.756 ng
 RT: 11.416 min Scan# 1111
 Delta R.T. -0.006 min
 Lab File: BF140971.D
 Acq: 26 Dec 2024 16:49

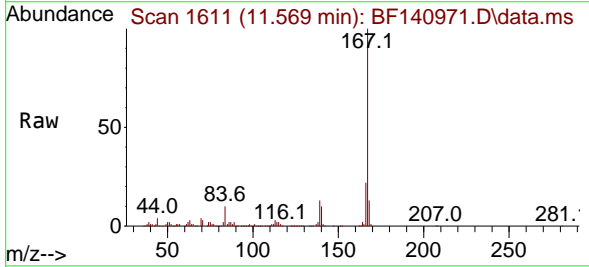
Instrument :
 BNA_F
 ClientSampleId :
 SSTDICC005



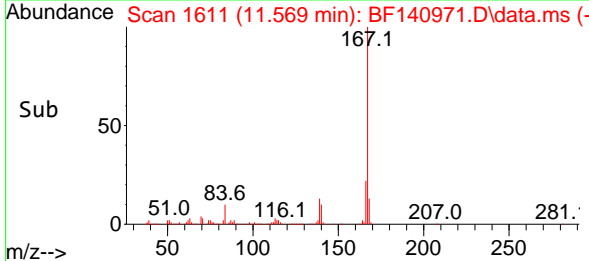
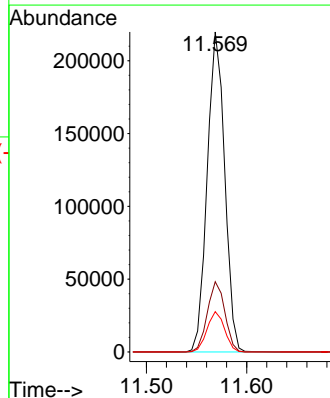
Tgt Ion:178 Resp: 278610
 Ion Ratio Lower Upper
 178 100
 176 18.1 15.3 22.9
 179 15.7 12.9 19.3

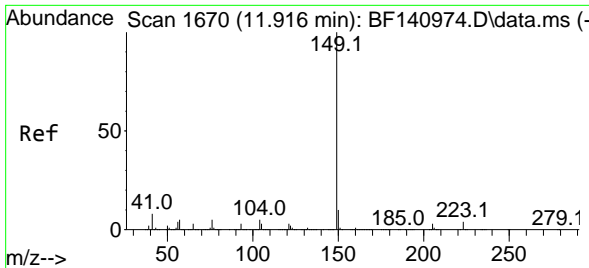


#73
 Carbazole
 Concen: 5.740 ng
 RT: 11.569 min Scan# 1611
 Delta R.T. -0.006 min
 Lab File: BF140971.D
 Acq: 26 Dec 2024 16:49



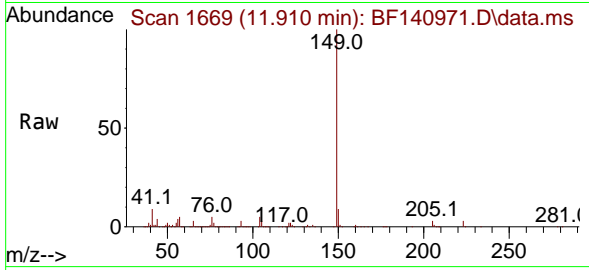
Tgt Ion:167 Resp: 267065
 Ion Ratio Lower Upper
 167 100
 166 22.0 17.5 26.3
 139 12.6 11.0 16.4



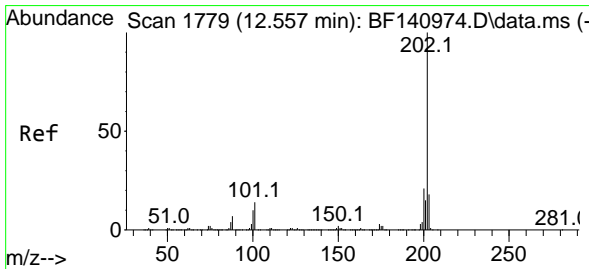
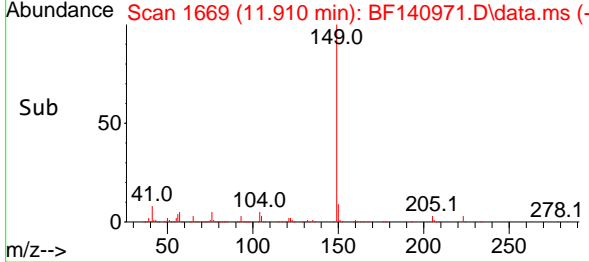
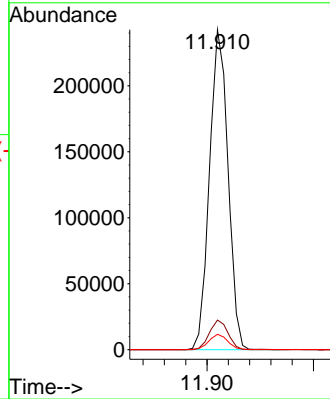


#74
 Di-n-butylphthalate
 Concen: 5.532 ng
 RT: 11.910 min Scan# 1669
 Delta R.T. -0.006 min
 Lab File: BF140971.D
 Acq: 26 Dec 2024 16:49

Instrument : BNA_F
 ClientSampleId : SSTDICC005

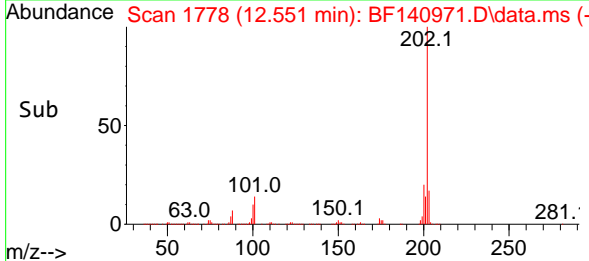
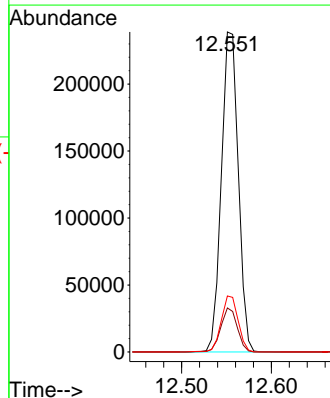
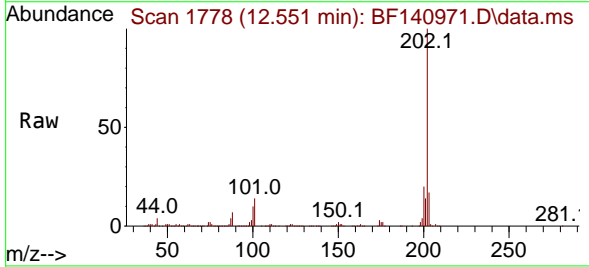


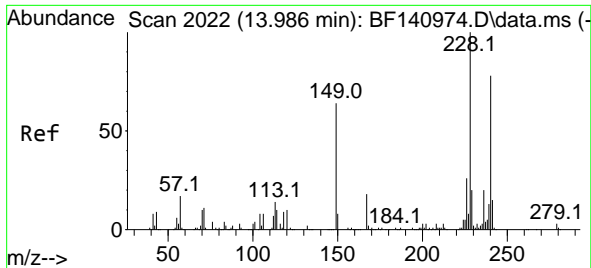
Tgt Ion:149 Resp: 292755
 Ion Ratio Lower Upper
 149 100
 150 9.3 7.7 11.5
 104 4.8 4.1 6.1



#75
 Fluoranthene
 Concen: 5.836 ng
 RT: 12.551 min Scan# 1778
 Delta R.T. -0.006 min
 Lab File: BF140971.D
 Acq: 26 Dec 2024 16:49

Tgt Ion:202 Resp: 312668
 Ion Ratio Lower Upper
 202 100
 101 13.8 0.0 33.7
 203 17.5 0.0 38.1



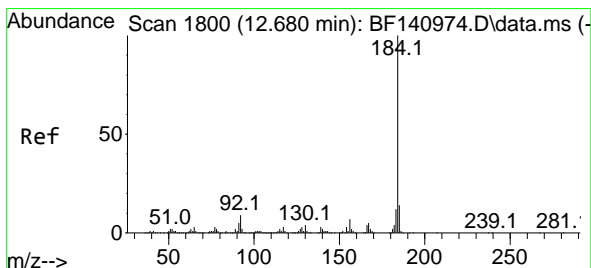
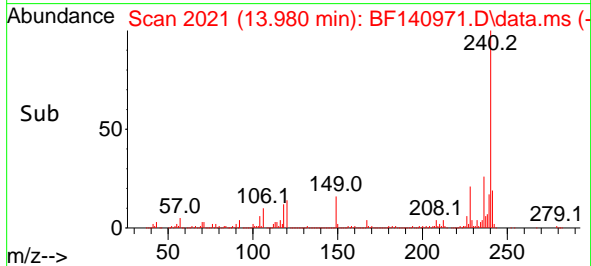
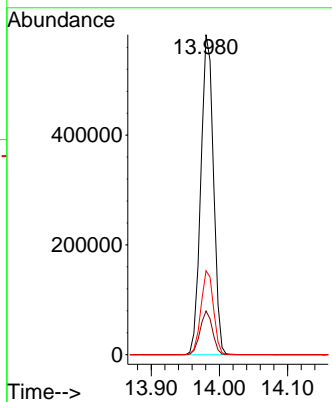
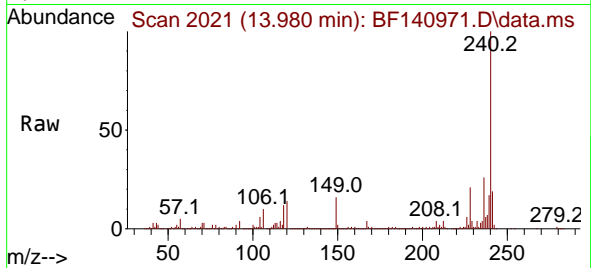


#76
 Chrysene-d12
 Concen: 20.000 ng
 RT: 13.980 min Scan# 20
 Delta R.T. -0.006 min
 Lab File: BF140971.D
 Acq: 26 Dec 2024 16:49

Instrument : BNA_F
 ClientSampleId : SSTDICC005

Tgt Ion:240 Resp: 749775

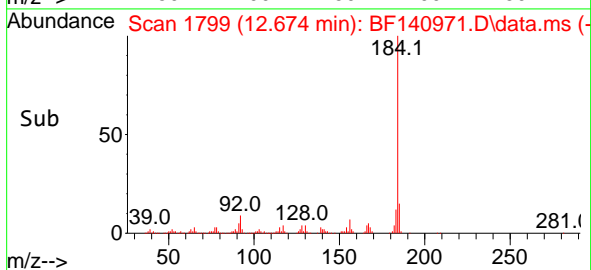
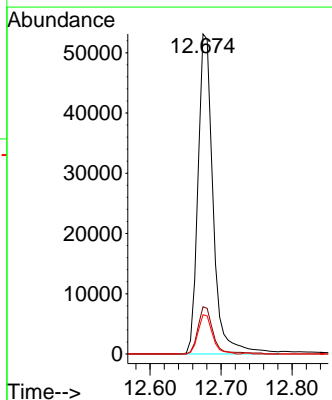
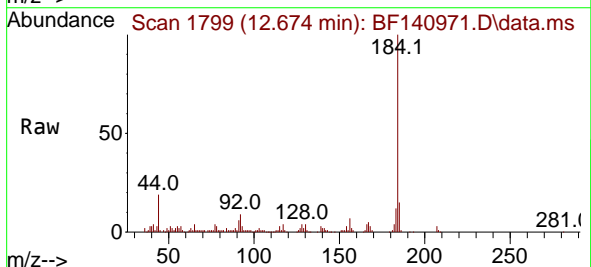
Ion	Ratio	Lower	Upper
240	100		
120	13.7	10.7	16.1
236	26.3	20.6	31.0

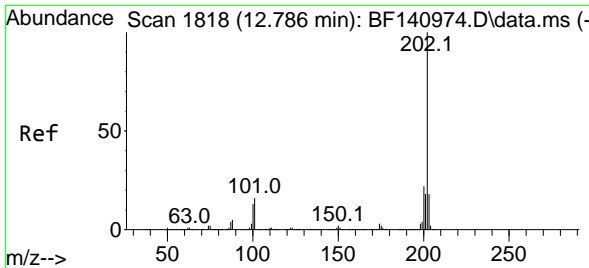


#77
 Benzidine
 Concen: 4.990 ng
 RT: 12.674 min Scan# 1799
 Delta R.T. -0.006 min
 Lab File: BF140971.D
 Acq: 26 Dec 2024 16:49

Tgt Ion:184 Resp: 79065

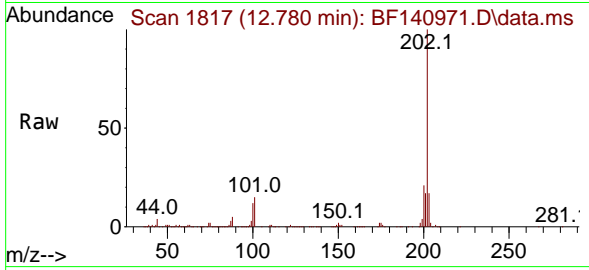
Ion	Ratio	Lower	Upper
184	100		
185	14.8	11.4	17.2
183	12.3	9.4	14.0





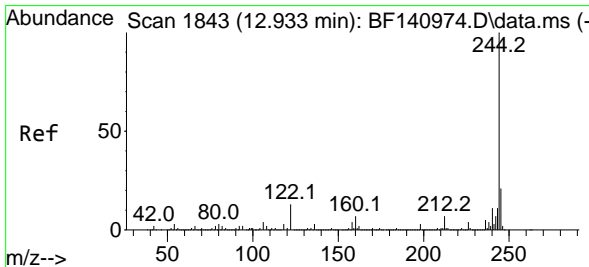
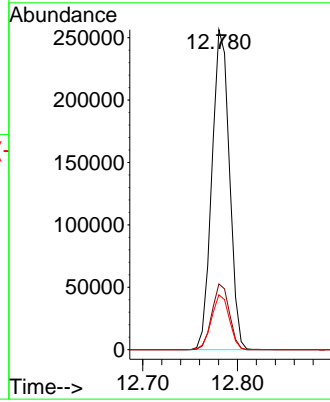
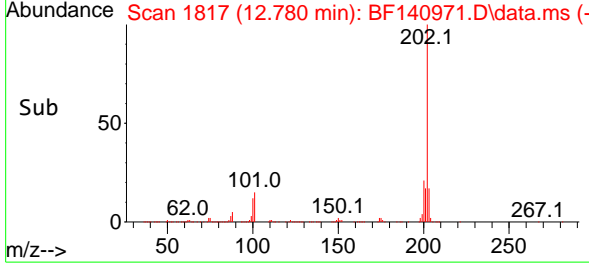
#78
 Pyrene
 Concen: 5.014 ng
 RT: 12.780 min Scan# 1817
 Delta R.T. -0.006 min
 Lab File: BF140971.D
 Acq: 26 Dec 2024 16:49

Instrument : BNA_F
 ClientSampleId : SSTDICC005

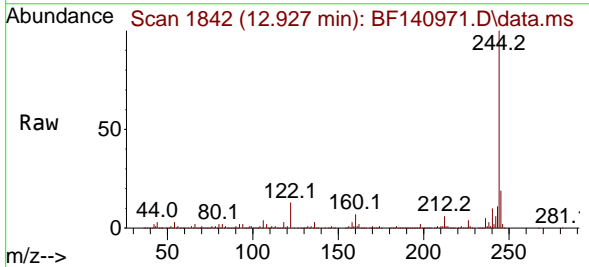


Tgt Ion:202 Resp: 328787

Ion	Ratio	Lower	Upper
202	100		
200	20.6	17.3	25.9
203	17.2	14.6	21.8

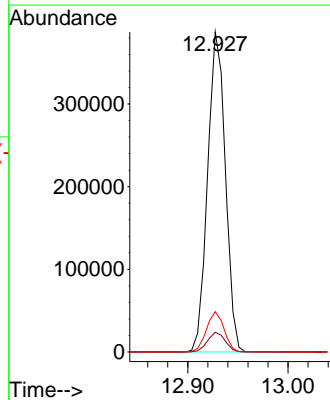
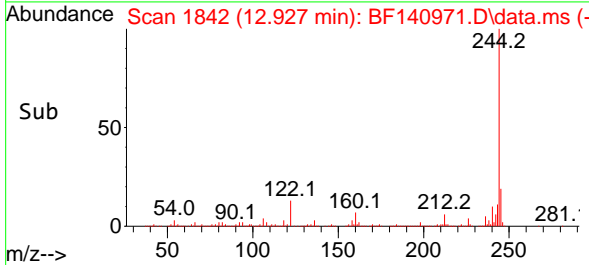


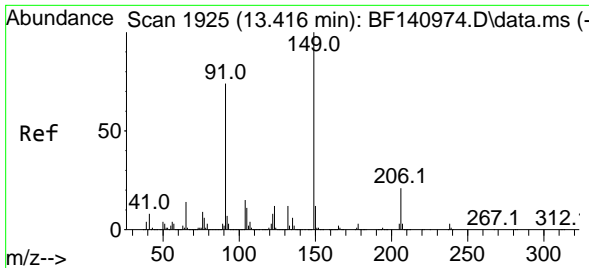
#79
 Terphenyl-d14
 Concen: 10.588 ng
 RT: 12.927 min Scan# 1842
 Delta R.T. -0.006 min
 Lab File: BF140971.D
 Acq: 26 Dec 2024 16:49



Tgt Ion:244 Resp: 477948

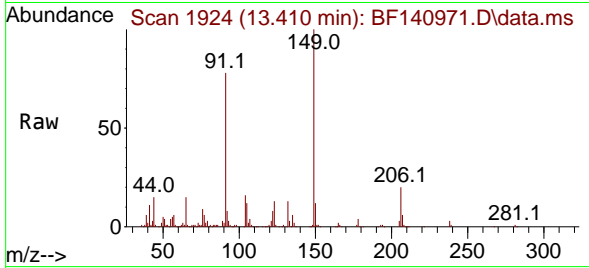
Ion	Ratio	Lower	Upper
244	100		
212	6.1	5.7	8.5
122	12.6	10.2	15.2



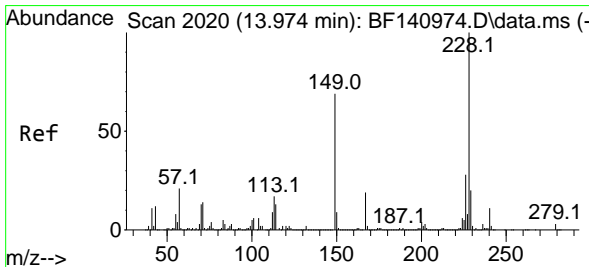
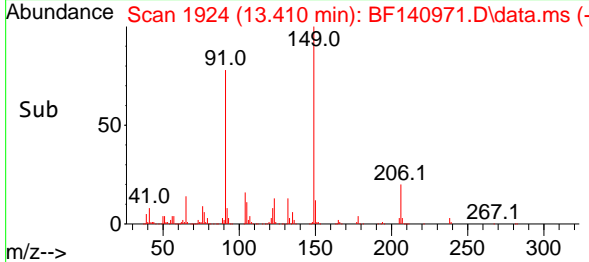
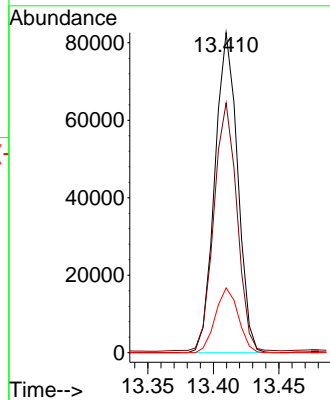


#80
 Butylbenzylphthalate
 Concen: 4.162 ng
 RT: 13.410 min Scan# 1924
 Delta R.T. -0.006 min
 Lab File: BF140971.D
 Acq: 26 Dec 2024 16:49

Instrument :
 BNA_F
 ClientSampleId :
 SSTDICC005

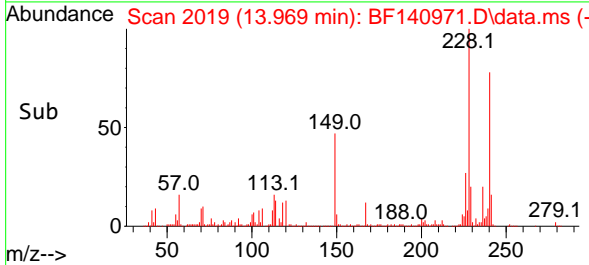
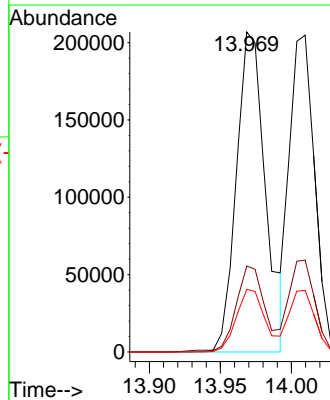
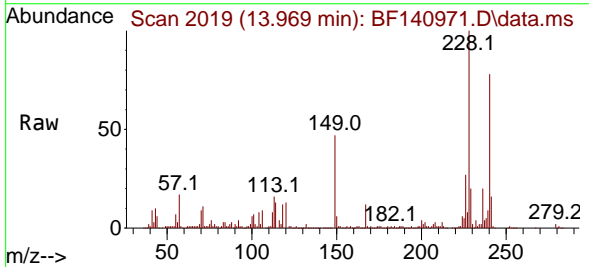


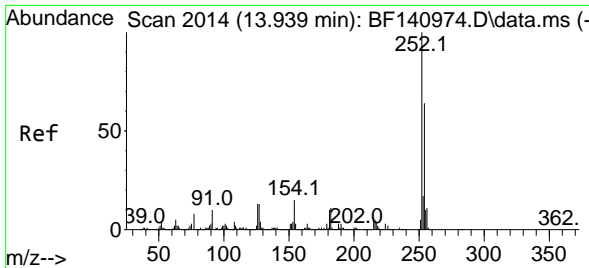
Tgt Ion:149 Resp: 99667
 Ion Ratio Lower Upper
 149 100
 91 78.1 59.5 89.3
 206 20.3 17.1 25.7



#81
 Benzo(a)anthracene
 Concen: 5.641 ng
 RT: 13.969 min Scan# 2019
 Delta R.T. -0.006 min
 Lab File: BF140971.D
 Acq: 26 Dec 2024 16:49

Tgt Ion:228 Resp: 294772
 Ion Ratio Lower Upper
 228 100
 226 26.9 22.1 33.1
 229 19.5 16.2 24.2

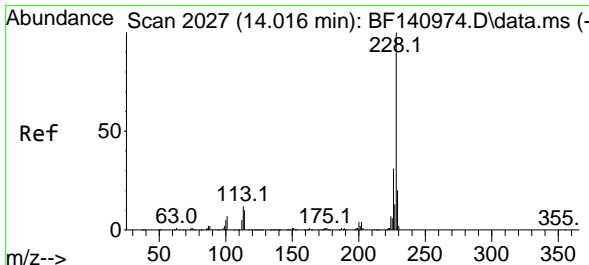
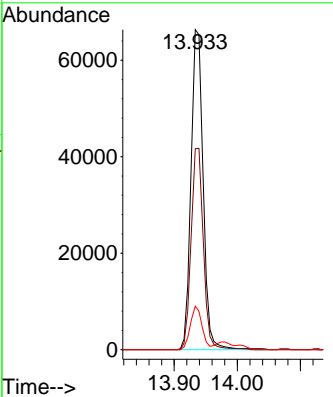
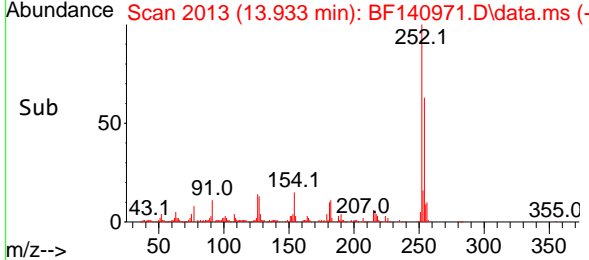
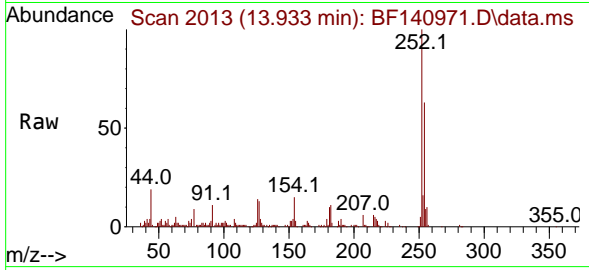




#82
 3,3'-Dichlorobenzidine
 Concen: 5.658 ng
 RT: 13.933 min Scan# 2014
 Delta R.T. -0.006 min
 Lab File: BF140971.D
 Acq: 26 Dec 2024 16:49

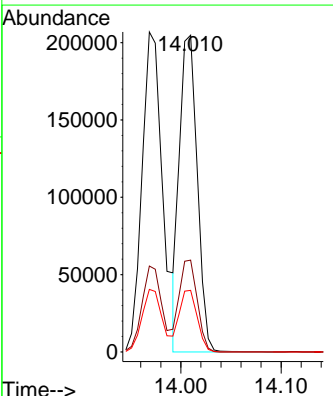
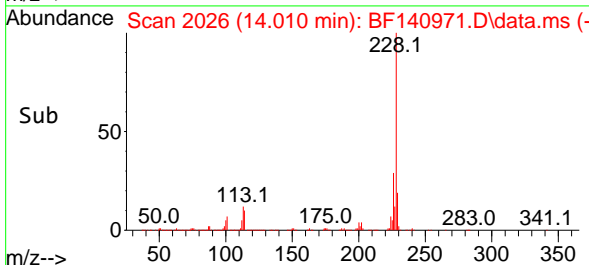
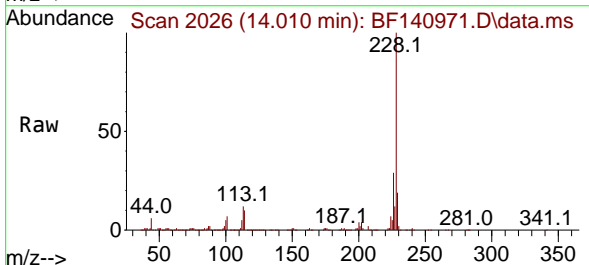
Instrument : BNA_F
 ClientSampleId : SSTDICC005

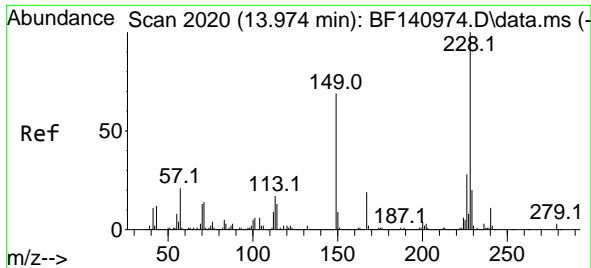
Tgt Ion	Resp	Lower	Upper
252	88822	100	100
254	62.8	51.5	77.3
126	13.6	10.3	15.5



#83
 Chrysene
 Concen: 5.335 ng
 RT: 14.010 min Scan# 2026
 Delta R.T. -0.006 min
 Lab File: BF140971.D
 Acq: 26 Dec 2024 16:49

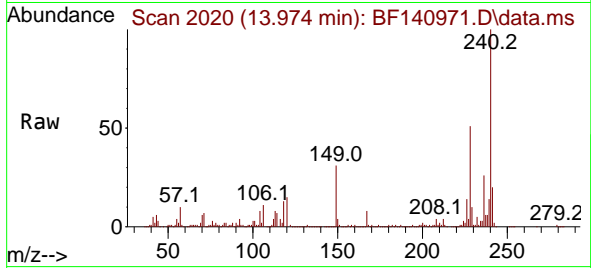
Tgt Ion	Resp	Lower	Upper
228	251288	100	100
226	29.0	24.5	36.7
229	19.4	16.2	24.4



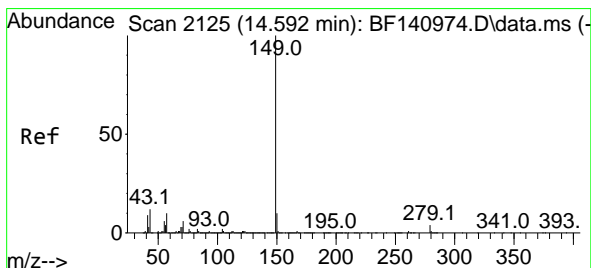
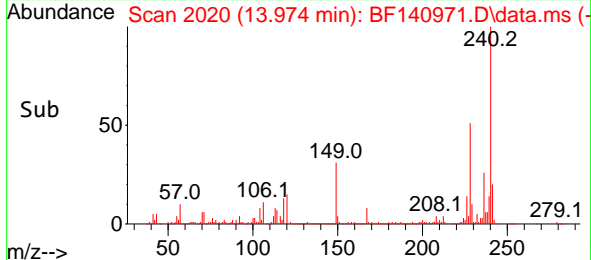
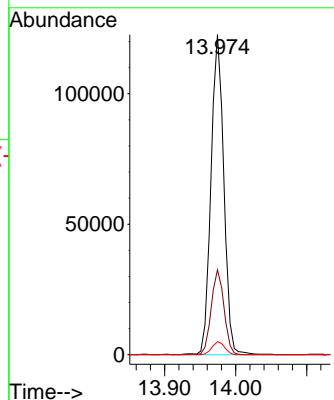


#84
 Bis(2-ethylhexyl)phthalate
 Concen: 4.960 ng
 RT: 13.974 min Scan# 2020
 Delta R.T. 0.000 min
 Lab File: BF140971.D
 Acq: 26 Dec 2024 16:49

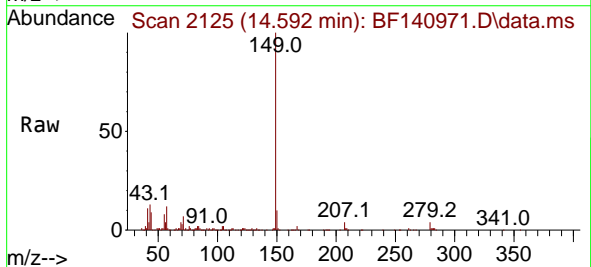
Instrument :
 BNA_F
 ClientSampleId :
 SSTDICC005



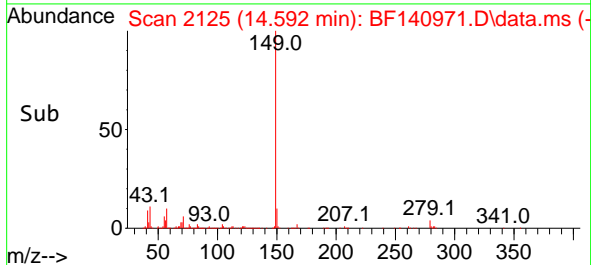
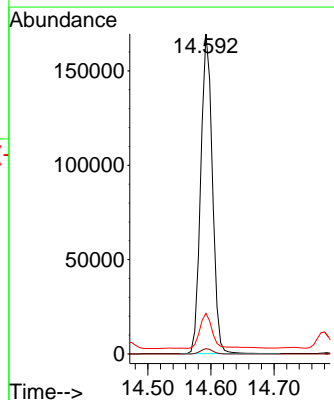
Tgt Ion:149 Resp: 154045
 Ion Ratio Lower Upper
 149 100
 167 26.5 21.6 32.4
 279 4.1 3.2 4.8

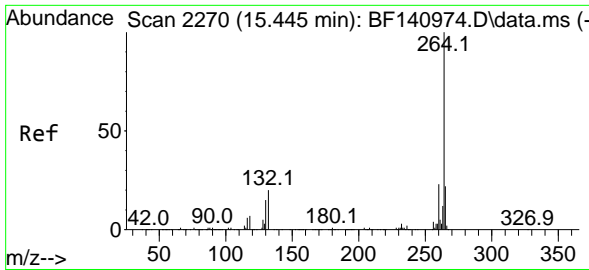


#85
 Di-n-octyl phthalate
 Concen: 4.825 ng
 RT: 14.592 min Scan# 2125
 Delta R.T. 0.000 min
 Lab File: BF140971.D
 Acq: 26 Dec 2024 16:49



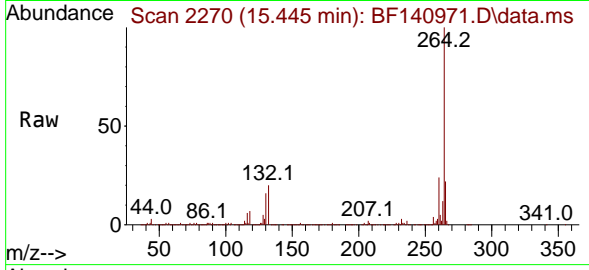
Tgt Ion:149 Resp: 216905
 Ion Ratio Lower Upper
 149 100
 167 1.7 1.2 1.8
 43 12.2 9.3 13.9



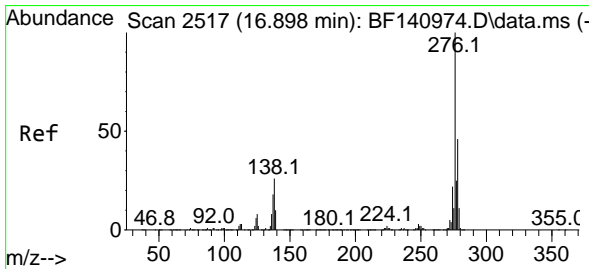
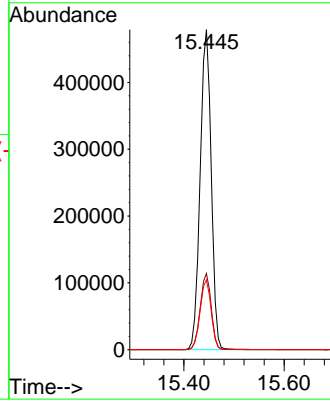
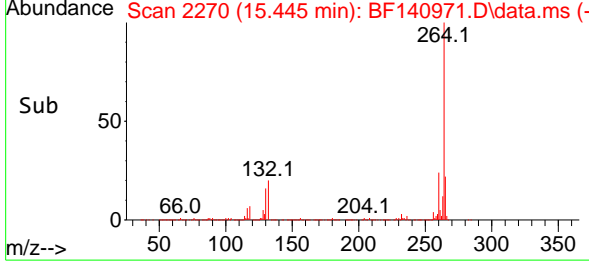


#86
 Perylene-d12
 Concen: 20.000 ng
 RT: 15.445 min Scan# 21
 Delta R.T. 0.000 min
 Lab File: BF140971.D
 Acq: 26 Dec 2024 16:49

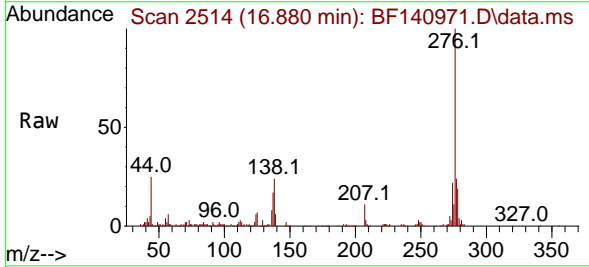
Instrument :
 BNA_F
 ClientSampleId :
 SSTDICC005



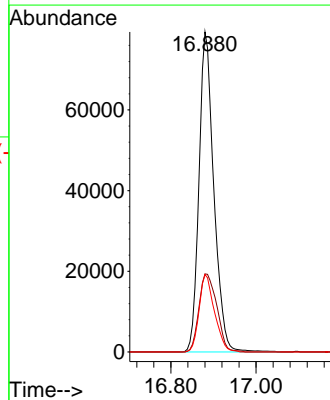
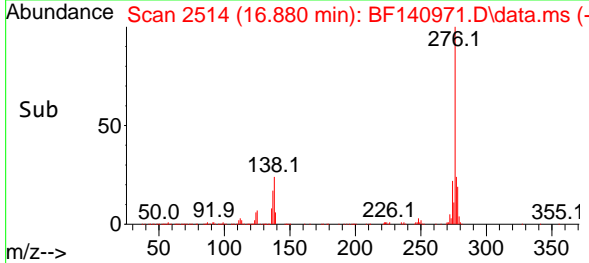
Tgt Ion:264 Resp: 730672
 Ion Ratio Lower Upper
 264 100
 260 23.8 18.7 28.1
 265 21.8 17.4 26.2

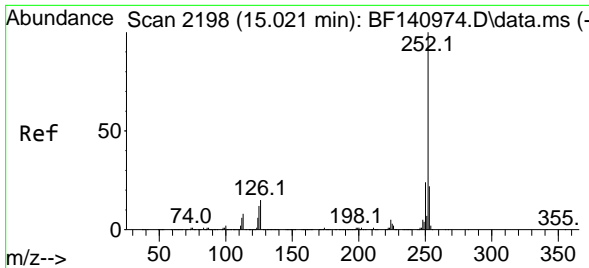


#87
 Indeno(1,2,3-cd)pyrene
 Concen: 4.166 ng
 RT: 16.880 min Scan# 2514
 Delta R.T. -0.018 min
 Lab File: BF140971.D
 Acq: 26 Dec 2024 16:49



Tgt Ion:276 Resp: 191761
 Ion Ratio Lower Upper
 276 100
 138 29.3 23.1 34.7
 277 25.0 20.4 30.6

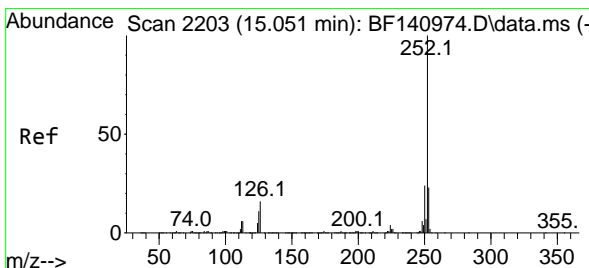
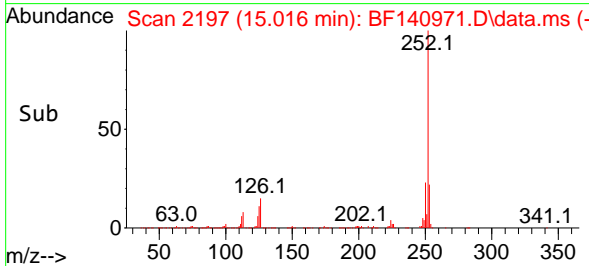
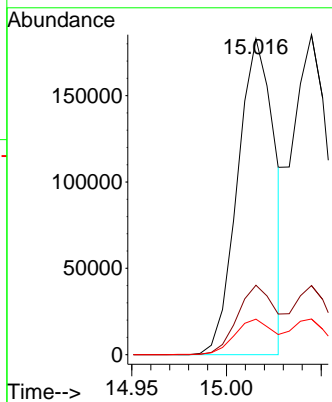
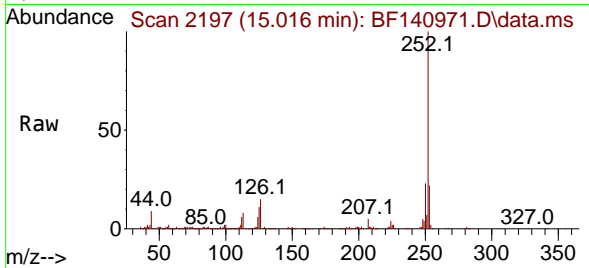




#88
 Benzo(b)fluoranthene
 Concen: 4.876 ng
 RT: 15.016 min Scan# 2197
 Delta R.T. -0.006 min
 Lab File: BF140971.D
 Acq: 26 Dec 2024 16:49

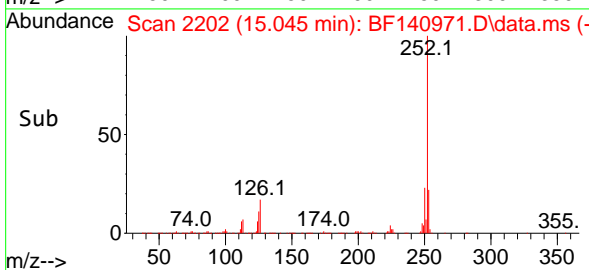
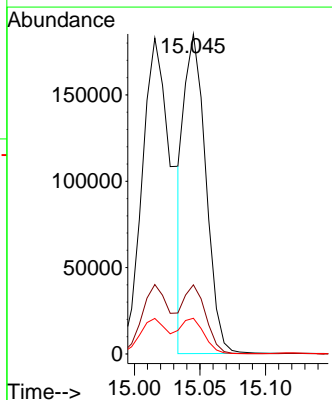
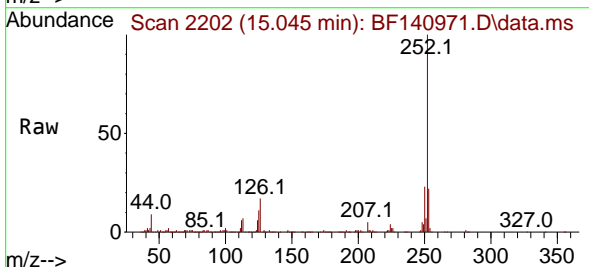
Instrument : BNA_F
 ClientSampleId : SSTDICC005

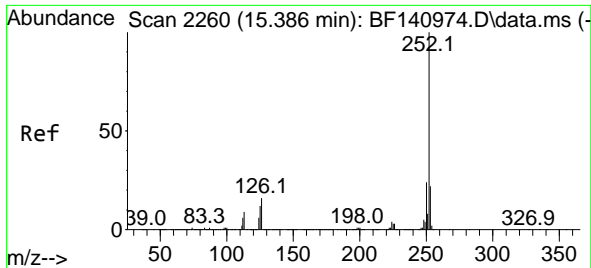
Tgt Ion:252 Resp: 248464
 Ion Ratio Lower Upper
 252 100
 253 22.0 17.7 26.5
 125 11.3 9.3 13.9



#89
 Benzo(k)fluoranthene
 Concen: 5.330 ng
 RT: 15.045 min Scan# 2202
 Delta R.T. -0.006 min
 Lab File: BF140971.D
 Acq: 26 Dec 2024 16:49

Tgt Ion:252 Resp: 212890
 Ion Ratio Lower Upper
 252 100
 253 21.6 17.8 26.8
 125 11.1 9.4 14.0





#90
 Benzo(a)pyrene
 Concen: 5.294 ng
 RT: 15.374 min Scan# 21
 Delta R.T. -0.012 min
 Lab File: BF140971.D
 Acq: 26 Dec 2024 16:49

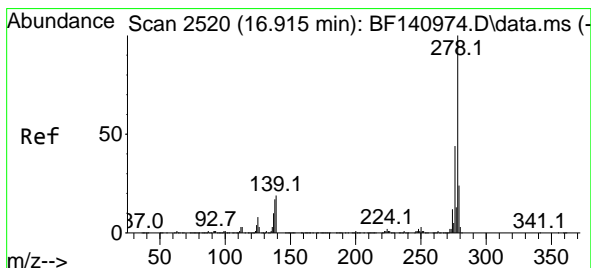
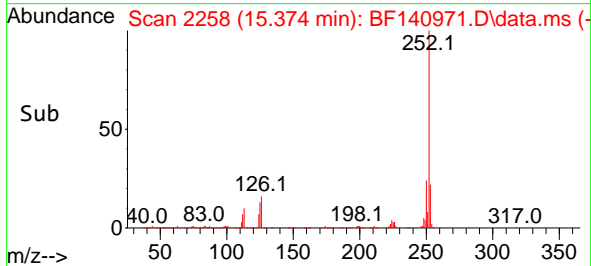
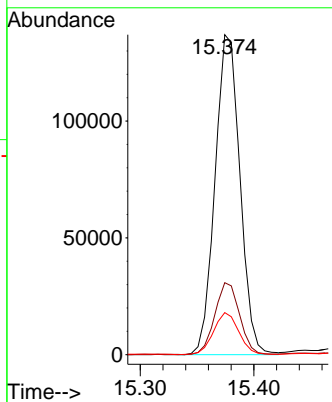
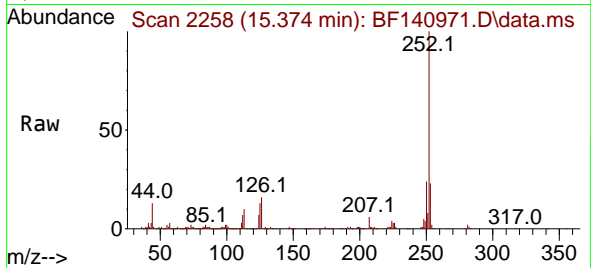
Instrument :

BNA_F

ClientSampleId :

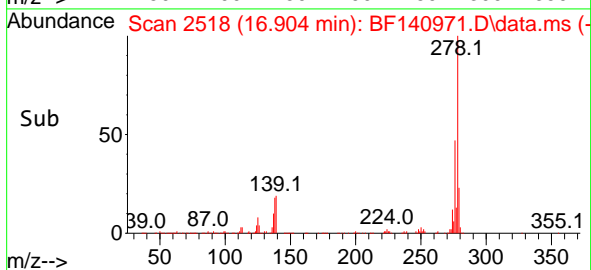
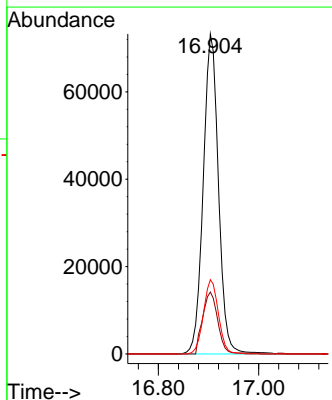
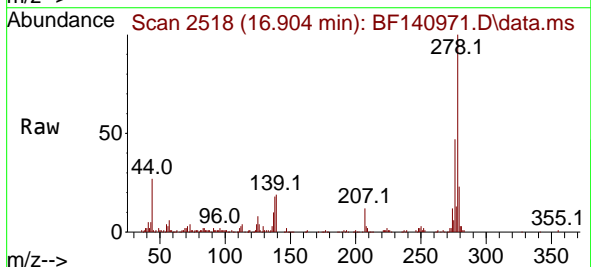
SSTDICC005

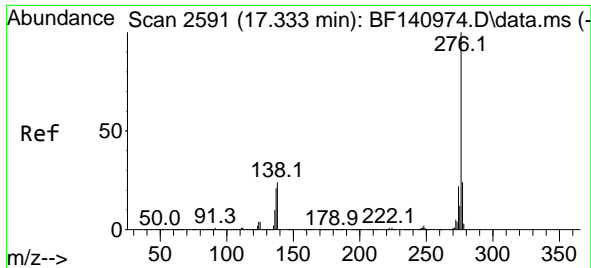
Tgt Ion:252 Resp: 209418
 Ion Ratio Lower Upper
 252 100
 253 22.5 17.2 25.8
 125 13.1 9.8 14.8



#91
 Dibenzo(a,h)anthracene
 Concen: 4.147 ng
 RT: 16.904 min Scan# 2518
 Delta R.T. -0.012 min
 Lab File: BF140971.D
 Acq: 26 Dec 2024 16:49

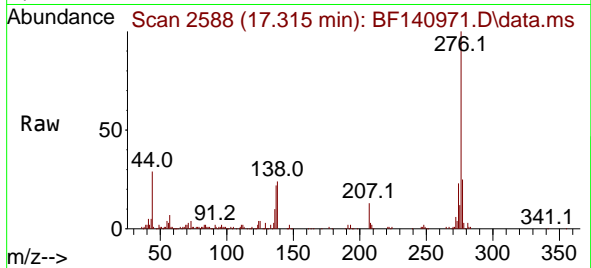
Tgt Ion:278 Resp: 154741
 Ion Ratio Lower Upper
 278 100
 139 19.4 14.9 22.3
 279 23.2 19.0 28.6





#92
 Benzo(g,h,i)perylene
 Concen: 3.893 ng
 RT: 17.315 min Scan# 21
 Delta R.T. -0.018 min
 Lab File: BF140971.D
 Acq: 26 Dec 2024 16:49

Instrument :
 BNA_F
 ClientSampleId :
 SSTDICC005



Tgt Ion: 276 Resp: 150669

Ion	Ratio	Lower	Upper
276	100		
277	24.9	19.0	28.4
138	24.3	19.4	29.2

