

Data Path : Z:\pestpcbsrv\HPCHEM1\ECD_S\Data\PS122324\
 Data File : PS028790.D
 Signal(s) : Signal #1: ECD1A.ch Signal #2: ECD2B.ch
 Acq On : 23 Dec 2024 12:35
 Operator : AR\AJ
 Sample : HSTDICC1000
 Misc :
 ALS Vial : 6 Sample Multiplier: 1

Instrument :
 ECD_S
 ClientSampleId :
 HSTDICC1000

Integration File signal 1: autoint1.e
 Integration File signal 2: autoint2.e
 Quant Time: Dec 23 13:39:39 2024
 Quant Method : Z:\pestpcbsrv\HPCHEM1\ECD_S\Method\PS122324.M
 Quant Title : 8080.M
 QLast Update : Mon Dec 23 13:35:06 2024
 Response via : Initial Calibration
 Integrator: ChemStation

Volume Inj. : 1 µl
 Signal #1 Phase : ZB-MR1 Signal #2 Phase: ZB-MR2
 Signal #1 Info : 30M x 0.32mm x0.5 Signal #2 Info : 30M x 0.32mm x 0.25µm

Compound	RT#1	RT#2	Resp#1	Resp#2	ng/ml	ng/ml

System Monitoring Compounds						
4) S 2,4-DCAA	7.210	7.700	2453.9E6	1104.1E6	1134.943	998.684
Target Compounds						
1) T Dalapon	2.620	2.675	2590.1E6	1784.2E6	908.696	909.276
2) T 3,5-DICHL...	6.385	6.660	2970.3E6	1521.1E6	932.245	932.254
3) T 4-Nitroph...	7.008	7.228	1335.0E6	747.4E6	912.099	916.441
5) T DICAMBA	7.397	7.898	9168.9E6	5233.4E6	942.217	940.257
6) T MCPP	7.581	8.004	613.6E6	312.6E6	93.266	93.797
7) T MCPA	7.731	8.247	836.7E6	431.0E6	92.726	92.759
8) T DICHLORPROP	8.102	8.611	2407.7E6	1281.5E6	943.767	937.998
9) T 2,4-D	8.331	8.940	2561.8E6	1344.1E6	936.700	939.288
10) T Pentachlo...	8.629	9.465	36738.0E6	20389.3E6	996.145	954.348
11) T 2,4,5-TP ...	9.206	9.842	14533.1E6	8474.0E6	953.244	951.557
12) T 2,4,5-T	9.497	10.260	14990.1E6	8190.7E6	954.258	952.545
13) T 2,4-DB	10.069	10.826	2816.6E6	933.2E6	949.832	946.746
14) T DINOSEB	11.276	11.204	12260.6E6	5663.4E6	942.779	940.845
15) T Picloram	11.085	12.292	25059.4E6	12444.4E6	951.841	952.255
16) T DCPA	11.570	12.245	22401.4E6	10328.8E6	964.963	963.806

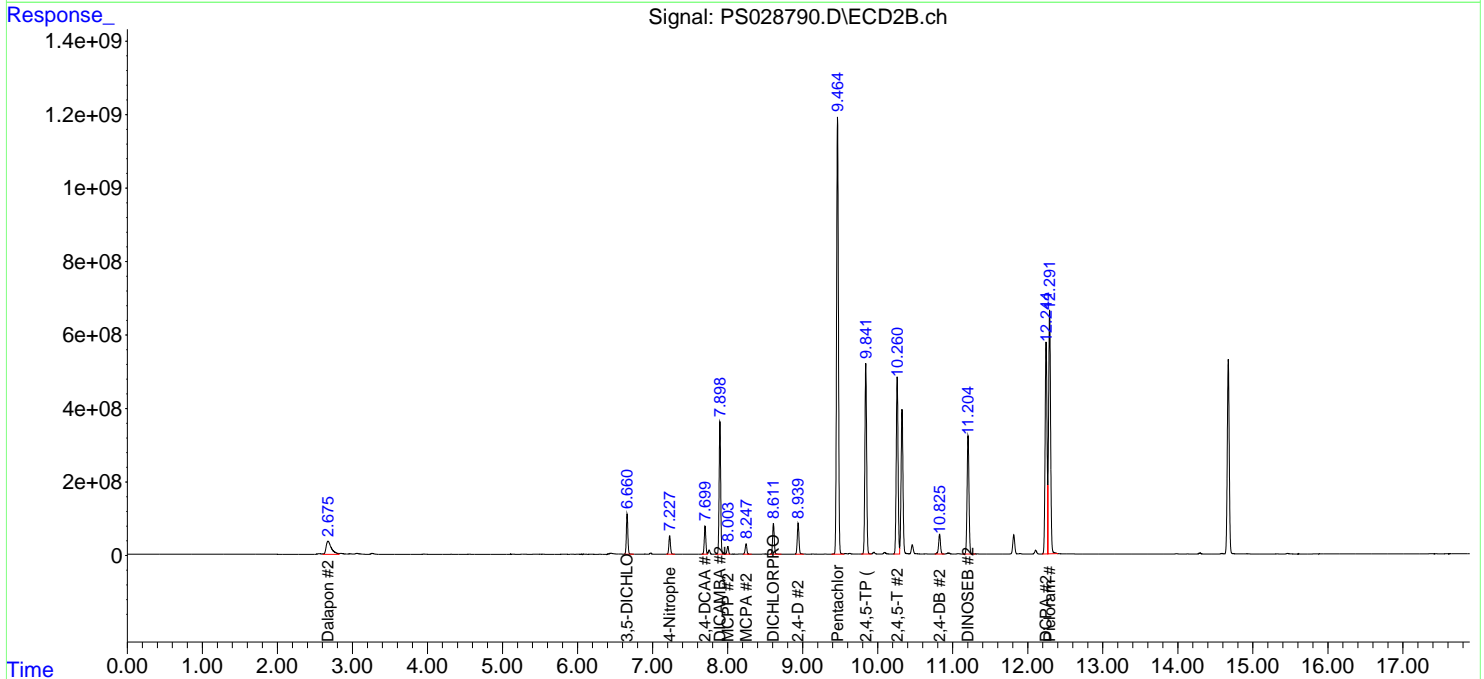
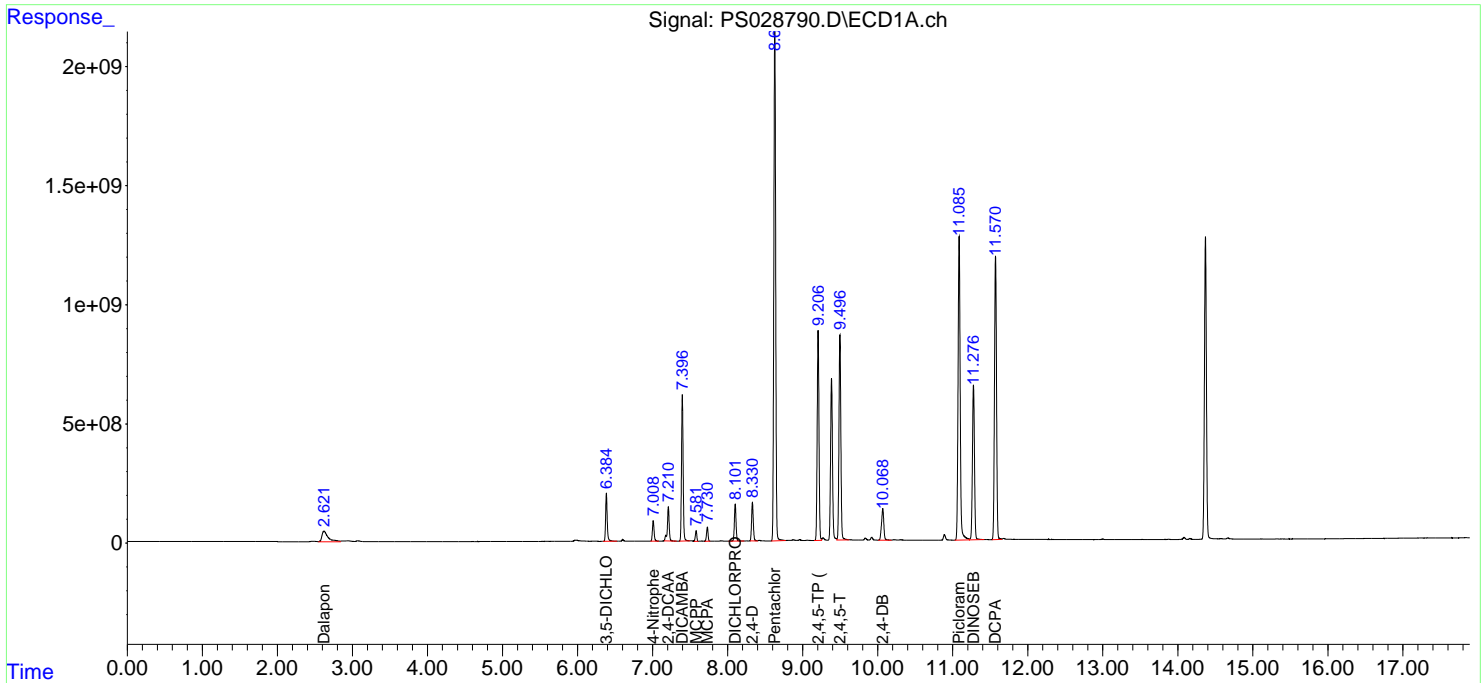
(f)=RT Delta > 1/2 Window (#)=Amounts differ by > 25% (m)=manual int.

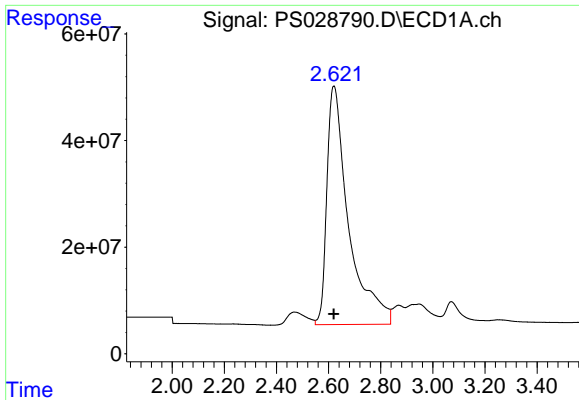
Data Path : Z:\pestpcbsrv\HPCHEM1\ECD_S\Data\PS122324\
 Data File : PS028790.D
 Signal(s) : Signal #1: ECD1A.ch Signal #2: ECD2B.ch
 Acq On : 23 Dec 2024 12:35
 Operator : AR\AJ
 Sample : HSTDICC1000
 Misc :
 ALS Vial : 6 Sample Multiplier: 1

Instrument :
 ECD_S
 ClientSampleId :
 HSTDICC1000

Integration File signal 1: autoint1.e
 Integration File signal 2: autoint2.e
 Quant Time: Dec 23 13:39:39 2024
 Quant Method : Z:\pestpcbsrv\HPCHEM1\ECD_S\Method\PS122324.M
 Quant Title : 8080.M
 QLast Update : Mon Dec 23 13:35:06 2024
 Response via : Initial Calibration
 Integrator: ChemStation

Volume Inj. : 1 µl
 Signal #1 Phase : ZB-MR1 Signal #2 Phase: ZB-MR2
 Signal #1 Info : 30M x 0.32mm x0.5 Signal #2 Info : 30M x 0.32mm x 0.25µm

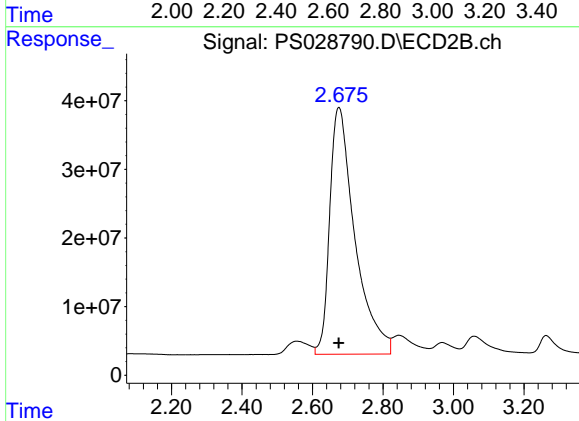




#1 Dalapon

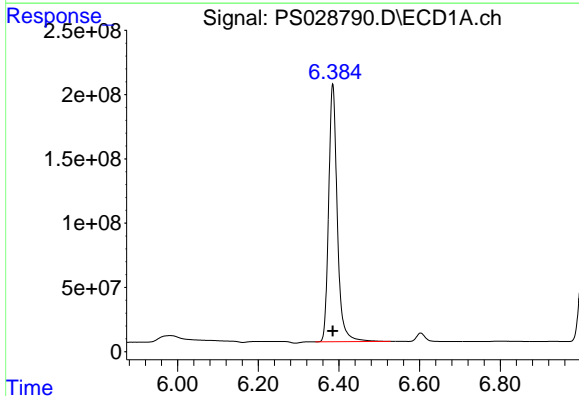
R.T.: 2.620 min
 Delta R.T.: 0.000 min
 Response: 2590128401
 Conc: 908.70 ng/ml

Instrument :
 ECD_S
 ClientSampleId :
 HSTDICC1000



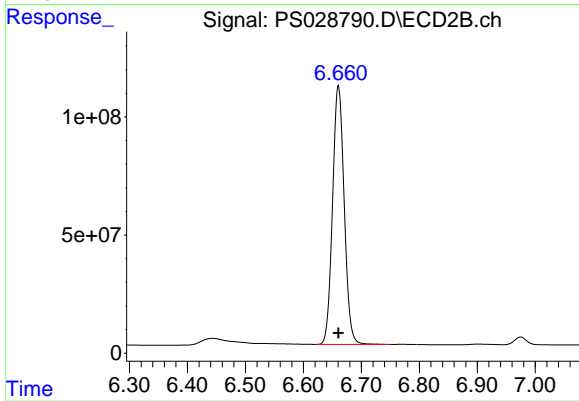
#1 Dalapon

R.T.: 2.675 min
 Delta R.T.: 0.000 min
 Response: 1784237725
 Conc: 909.28 ng/ml



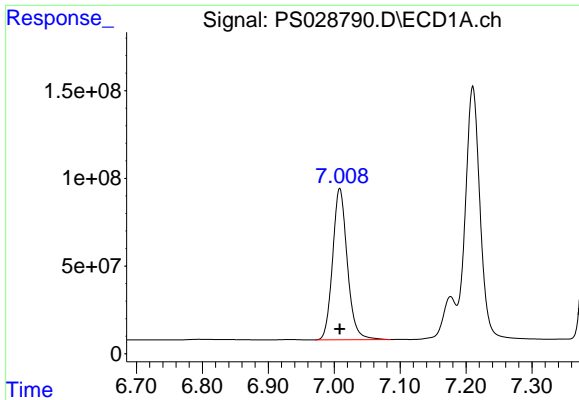
#2 3,5-DICHLOROBENZOIC ACID

R.T.: 6.385 min
 Delta R.T.: 0.000 min
 Response: 2970251089
 Conc: 932.25 ng/ml



#2 3,5-DICHLOROBENZOIC ACID

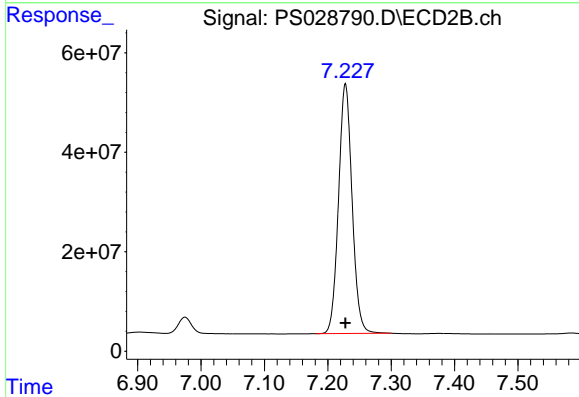
R.T.: 6.660 min
 Delta R.T.: 0.000 min
 Response: 1521097294
 Conc: 932.25 ng/ml



#3 4-Nitrophenol

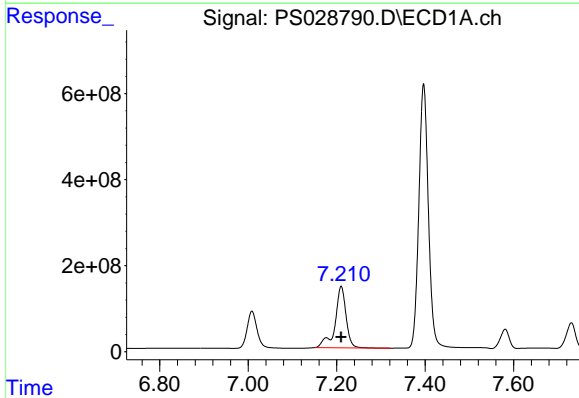
R.T.: 7.008 min
 Delta R.T.: 0.000 min
 Response: 1335023608
 Conc: 912.10 ng/ml

Instrument :
 ECD_S
 ClientSampleId :
 HSTDICC1000



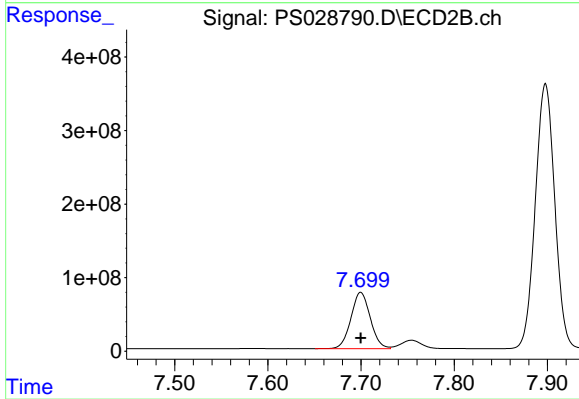
#3 4-Nitrophenol

R.T.: 7.228 min
 Delta R.T.: 0.000 min
 Response: 747396809
 Conc: 916.44 ng/ml



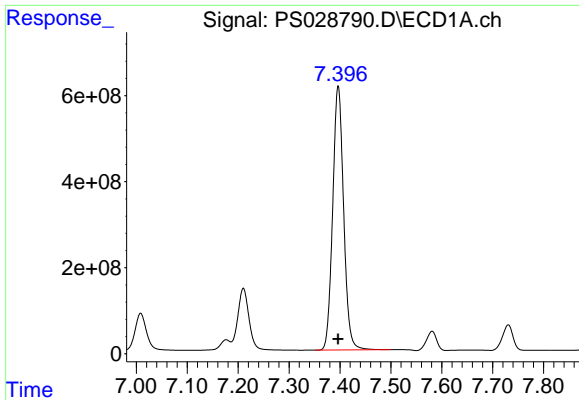
#4 2,4-DCAA

R.T.: 7.210 min
 Delta R.T.: 0.000 min
 Response: 2453909564
 Conc: 1134.94 ng/ml



#4 2,4-DCAA

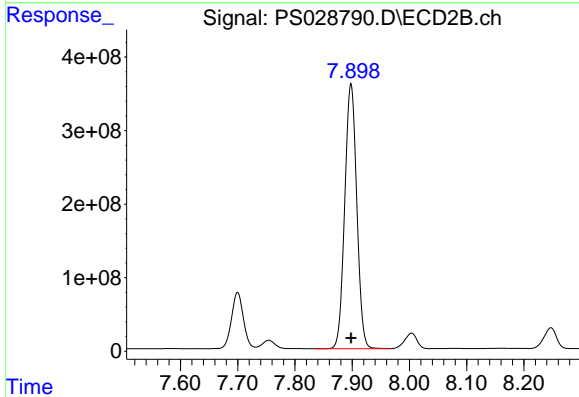
R.T.: 7.700 min
 Delta R.T.: 0.000 min
 Response: 1104094634
 Conc: 998.68 ng/ml



#5 DICAMBA

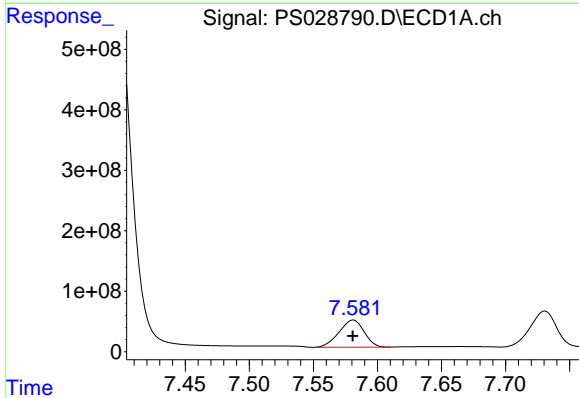
R.T.: 7.397 min
 Delta R.T.: 0.000 min
 Response: 9168915637
 Conc: 942.22 ng/ml

Instrument :
 ECD_S
 ClientSampleId :
 HSTDICC1000



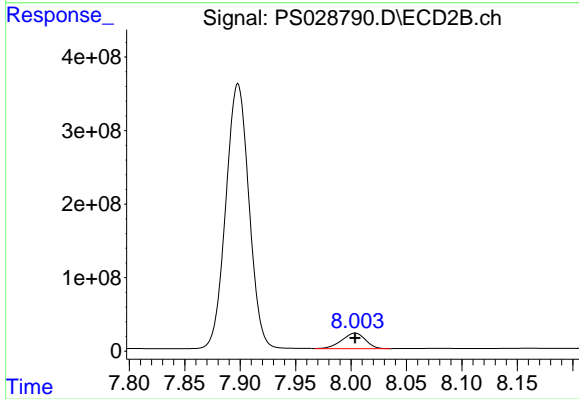
#5 DICAMBA

R.T.: 7.898 min
 Delta R.T.: 0.000 min
 Response: 5233373016
 Conc: 940.26 ng/ml



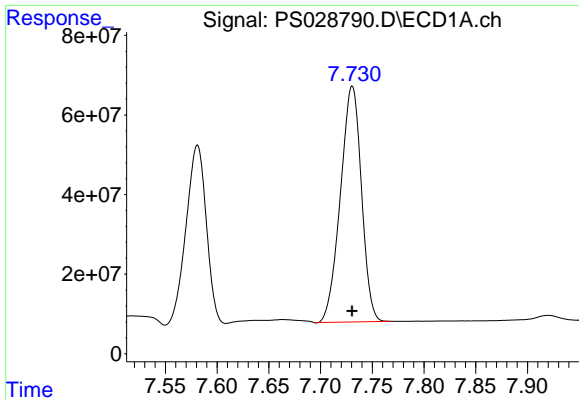
#6 MCP

R.T.: 7.581 min
 Delta R.T.: 0.000 min
 Response: 613570466
 Conc: 93.27 ug/ml



#6 MCP

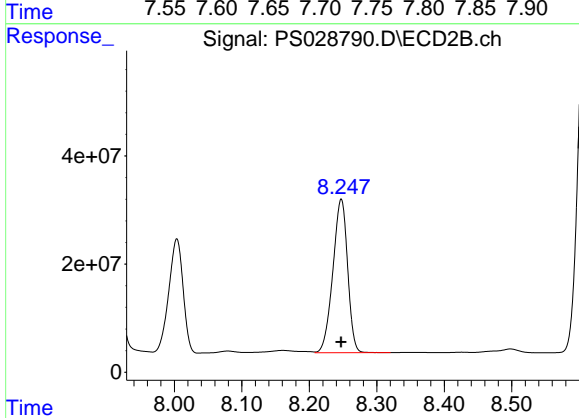
R.T.: 8.004 min
 Delta R.T.: 0.000 min
 Response: 312584461
 Conc: 93.80 ug/ml



#7 MCPA

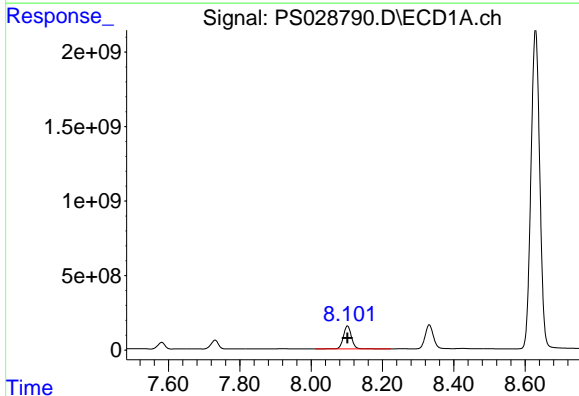
R.T.: 7.731 min
 Delta R.T.: 0.000 min
 Response: 836729639
 Conc: 92.73 ug/ml

Instrument :
 ECD_S
 ClientSampleId :
 HSTDICC1000



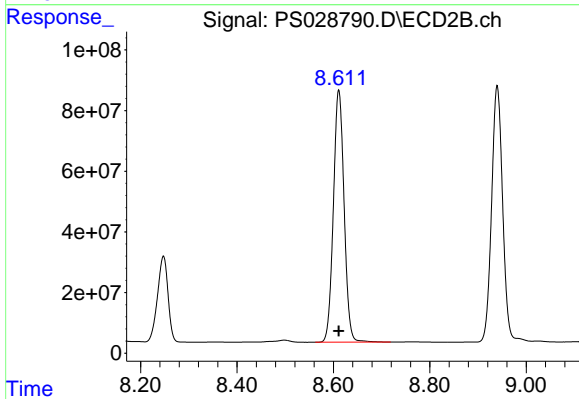
#7 MCPA

R.T.: 8.247 min
 Delta R.T.: 0.000 min
 Response: 431033829
 Conc: 92.76 ug/ml



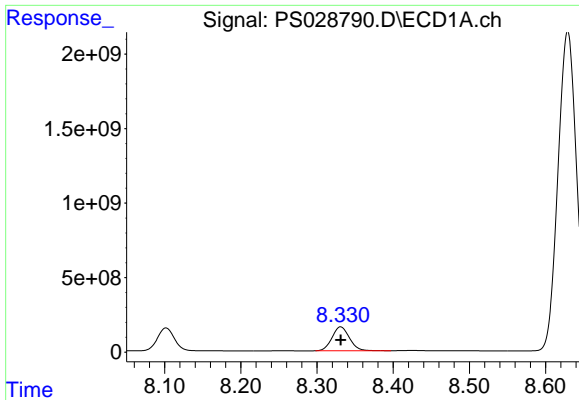
#8 DICHLORPROP

R.T.: 8.102 min
 Delta R.T.: 0.000 min
 Response: 2407731346
 Conc: 943.77 ng/ml



#8 DICHLORPROP

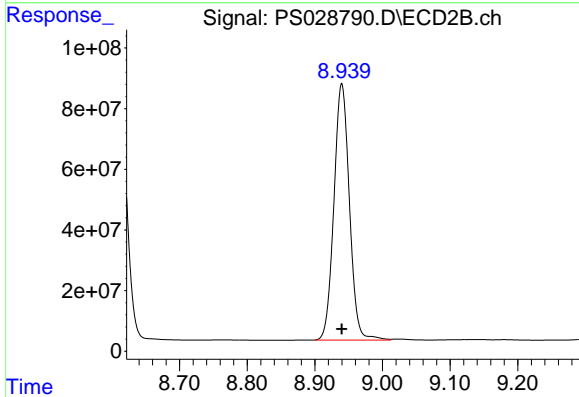
R.T.: 8.611 min
 Delta R.T.: 0.000 min
 Response: 1281467502
 Conc: 938.00 ng/ml



#9 2,4-D

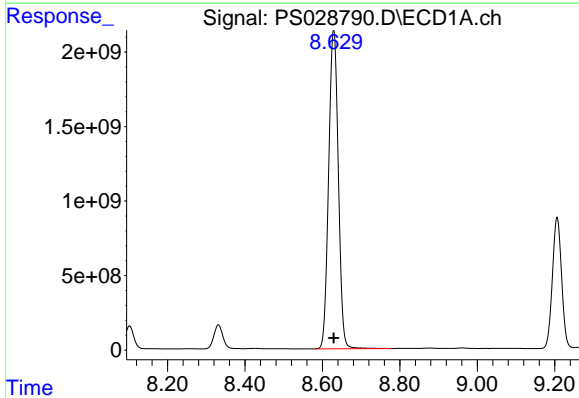
R.T.: 8.331 min
 Delta R.T.: 0.000 min
 Response: 2561822082
 Conc: 936.70 ng/ml

Instrument :
 ECD_S
 ClientSampleId :
 HSTDICC1000



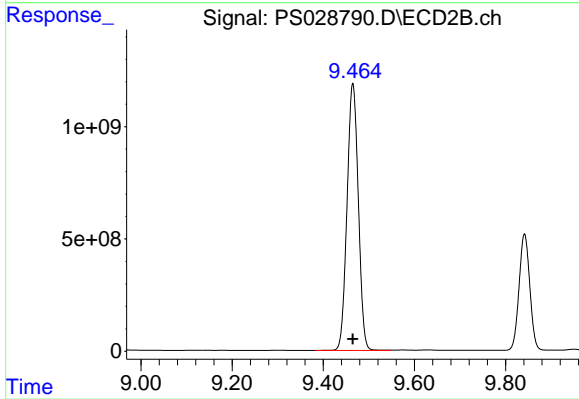
#9 2,4-D

R.T.: 8.940 min
 Delta R.T.: 0.000 min
 Response: 1344098924
 Conc: 939.29 ng/ml



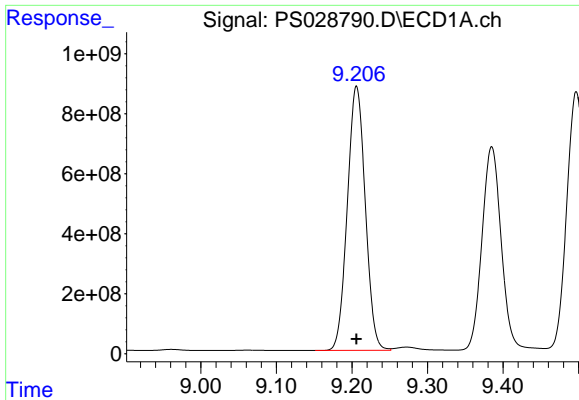
#10 Pentachlorophenol

R.T.: 8.629 min
 Delta R.T.: 0.000 min
 Response: 36737981703
 Conc: 996.15 ng/ml



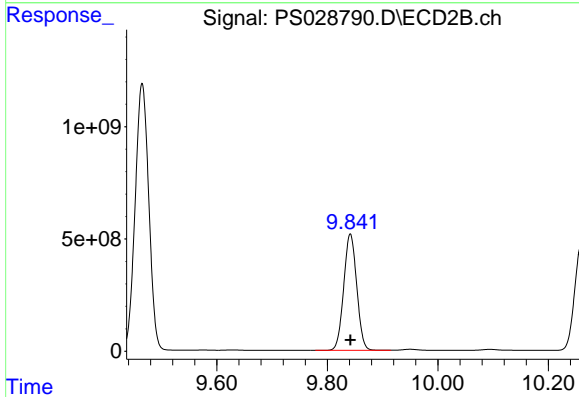
#10 Pentachlorophenol

R.T.: 9.465 min
 Delta R.T.: 0.000 min
 Response: 20389309944
 Conc: 954.35 ng/ml

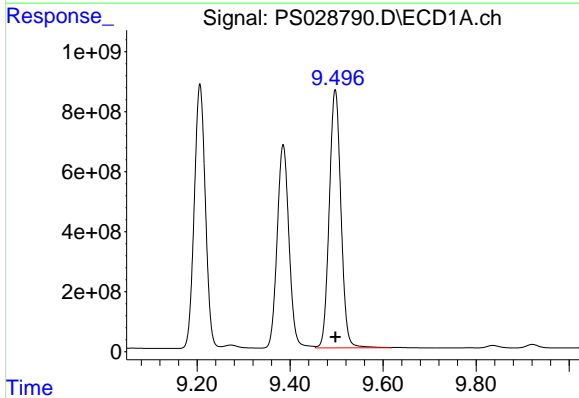


#11 2,4,5-TP (SILVEX)
 R.T.: 9.206 min
 Delta R.T.: 0.000 min
 Response: 14533086349
 Conc: 953.24 ng/ml

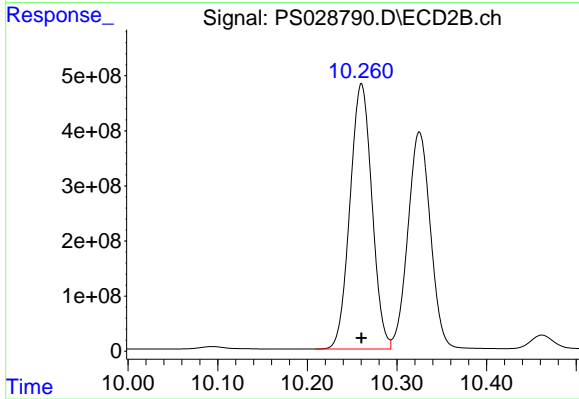
Instrument :
 ECD_S
 ClientSampleId :
 HSTDICC1000



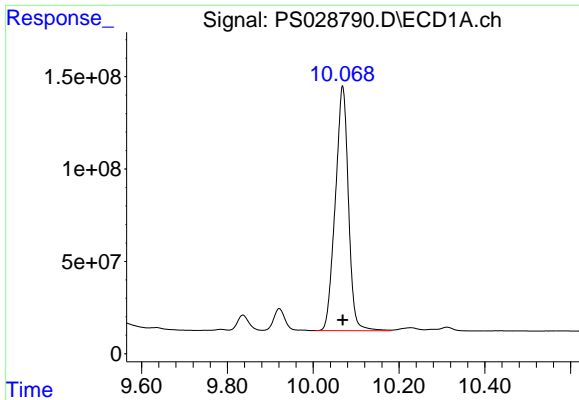
#11 2,4,5-TP (SILVEX)
 R.T.: 9.842 min
 Delta R.T.: 0.000 min
 Response: 8474047803
 Conc: 951.56 ng/ml



#12 2,4,5-T
 R.T.: 9.497 min
 Delta R.T.: 0.000 min
 Response: 14990081895
 Conc: 954.26 ng/ml



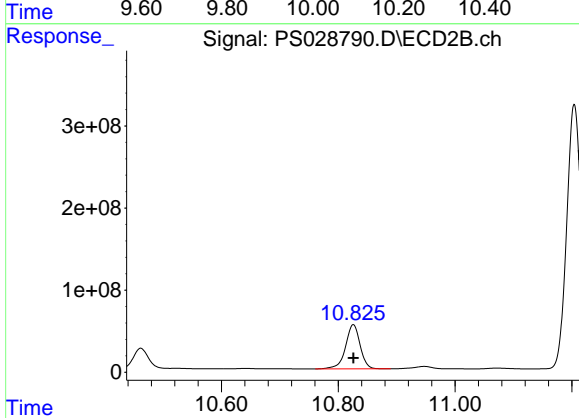
#12 2,4,5-T
 R.T.: 10.260 min
 Delta R.T.: 0.000 min
 Response: 8190674112
 Conc: 952.55 ng/ml



#13 2,4-DB

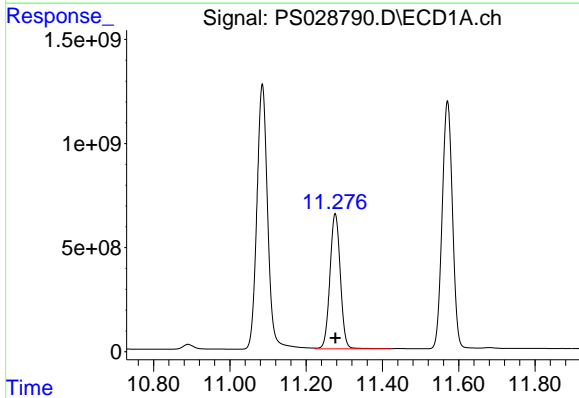
R.T.: 10.069 min
Delta R.T.: 0.000 min
Response: 2816645135
Conc: 949.83 ng/ml

Instrument :
ECD_S
ClientSampleId :
HSTDICC1000



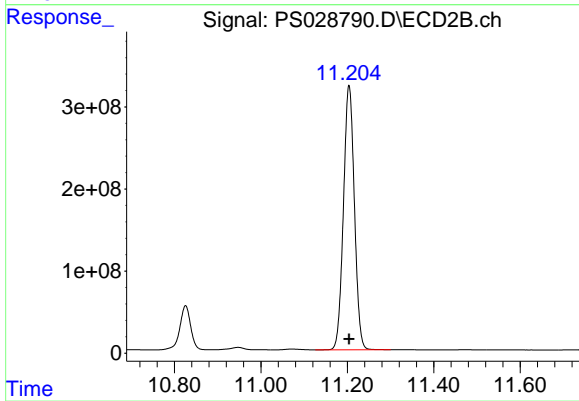
#13 2,4-DB

R.T.: 10.826 min
Delta R.T.: 0.000 min
Response: 933183960
Conc: 946.75 ng/ml



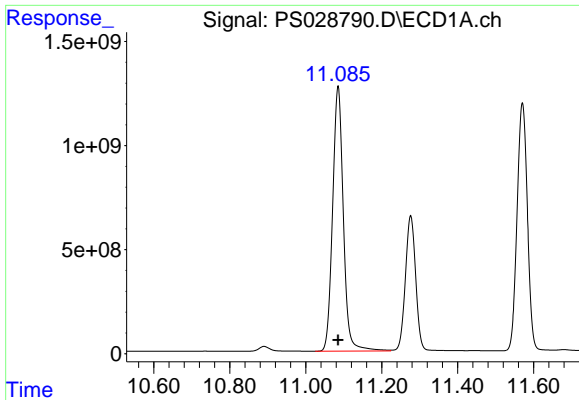
#14 DINOSEB

R.T.: 11.276 min
Delta R.T.: 0.000 min
Response: 12260566434
Conc: 942.78 ng/ml



#14 DINOSEB

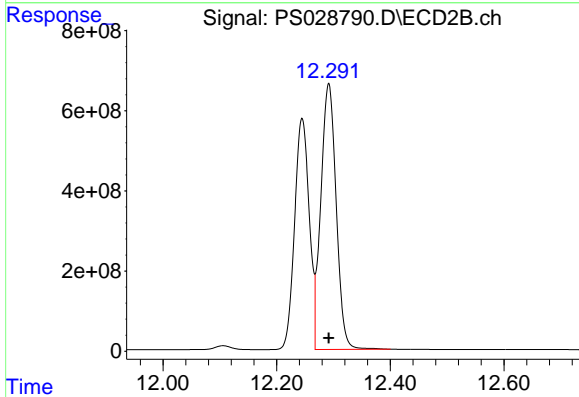
R.T.: 11.204 min
Delta R.T.: 0.000 min
Response: 5663401402
Conc: 940.85 ng/ml



#15 Picloram

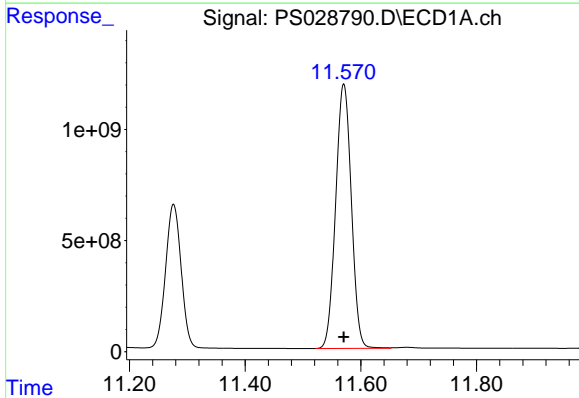
R.T.: 11.085 min
 Delta R.T.: 0.000 min
 Response: 25059396827
 Conc: 951.84 ng/ml

Instrument :
 ECD_S
 ClientSampleId :
 HSTDICC1000



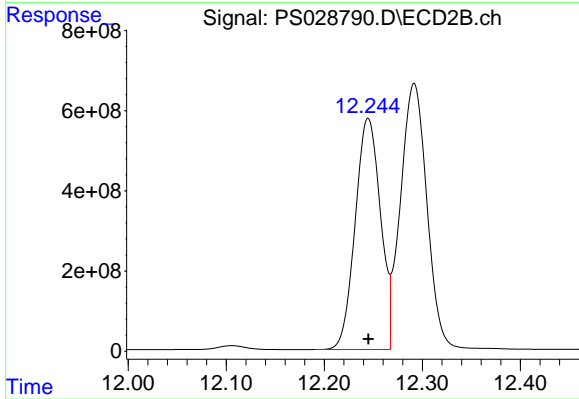
#15 Picloram

R.T.: 12.292 min
 Delta R.T.: 0.000 min
 Response: 12444414253
 Conc: 952.26 ng/ml



#16 DCPA

R.T.: 11.570 min
 Delta R.T.: 0.000 min
 Response: 22401440664
 Conc: 964.96 ng/ml



#16 DCPA

R.T.: 12.245 min
 Delta R.T.: 0.000 min
 Response: 10328797190
 Conc: 963.81 ng/ml