

Data Path : Z:\pestpcbsrv\HPCHEM1\ECD_S\Data\PS122324\
 Data File : PS028798.D
 Signal(s) : Signal #1: ECD1A.ch Signal #2: ECD2B.ch
 Acq On : 23 Dec 2024 15:46
 Operator : AR\AJ
 Sample : PB165776BS
 Misc :
 ALS Vial : 12 Sample Multiplier: 1

Instrument :
 ECD_S
 ClientSampleId :
 PB165776BS

Integration File signal 1: autoint1.e
 Integration File signal 2: autoint2.e
 Quant Time: Dec 30 04:29:43 2024
 Quant Method : Z:\pestpcbsrv\HPCHEM1\ECD_S\Method\PS122324.M
 Quant Title : 8080.M
 QLast Update : Mon Dec 23 13:44:25 2024
 Response via : Initial Calibration
 Integrator: ChemStation

Volume Inj. : 1 µl
 Signal #1 Phase : ZB-MR1 Signal #2 Phase: ZB-MR2
 Signal #1 Info : 30M x 0.32mm x0.5 Signal #2 Info : 30M x 0.32mm x 0.25µm

Compound	RT#1	RT#2	Resp#1	Resp#2	ng/ml	ng/ml
System Monitoring Compounds						
4) S 2,4-DCAA	7.209	7.699	1237.5E6	577.0E6	547.094	512.653
Target Compounds						
1) T Dalapon	2.621	2.675	1358.3E6	913.2E6	482.241	463.871
2) T 3,5-DICHL...	6.384	6.660	1679.2E6	789.7E6	509.597	476.391
3) T 4-Nitroph...	7.007	7.227	726.4E6	385.8E6	483.595	460.950
5) T DICAMBA	7.395	7.896	5049.6E6	2628.1E6	512.097	478.709
6) T MCPP	7.576	7.999	282.7E6	154.6E6	45.392	47.295
7) T MCPA	7.724	8.241	426.8E6	219.0E6	48.692	47.263
8) T DICHLORPROP	8.100	8.610	1360.4E6	671.9E6	512.751	486.978
9) T 2,4-D	8.329	8.939	1462.6E6	699.1E6	513.283	484.461
10) T Pentachlo...	8.627	9.464	21037.6E6	10876.4E6	538.501	498.945
11) T 2,4,5-TP ...	9.204	9.841	8203.7E6	4390.9E6	522.215	488.775
12) T 2,4,5-T	9.495	10.259	8496.7E6	4254.4E6	522.254	488.492
13) T 2,4-DB	10.066	10.825	1549.8E6	473.0E6	496.478	487.081
14) T DINOSEB	11.274	11.203	6906.1E6	2943.9E6	513.784	477.969
15) T Picloram	11.082	12.291	13388.1E6	6048.5E6	499.319	471.106
16) T DCPA	11.567	12.244	12602.5E6	5287.6E6	523.989	492.117

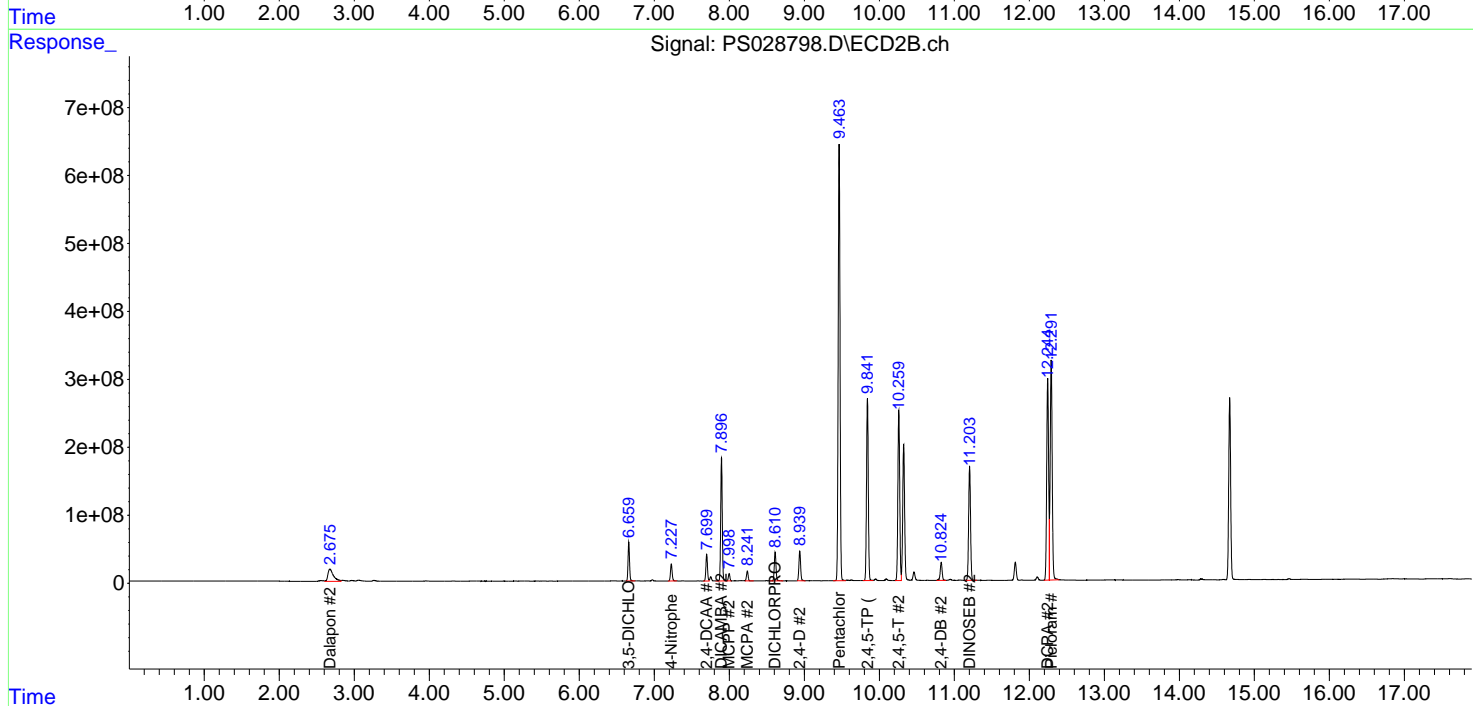
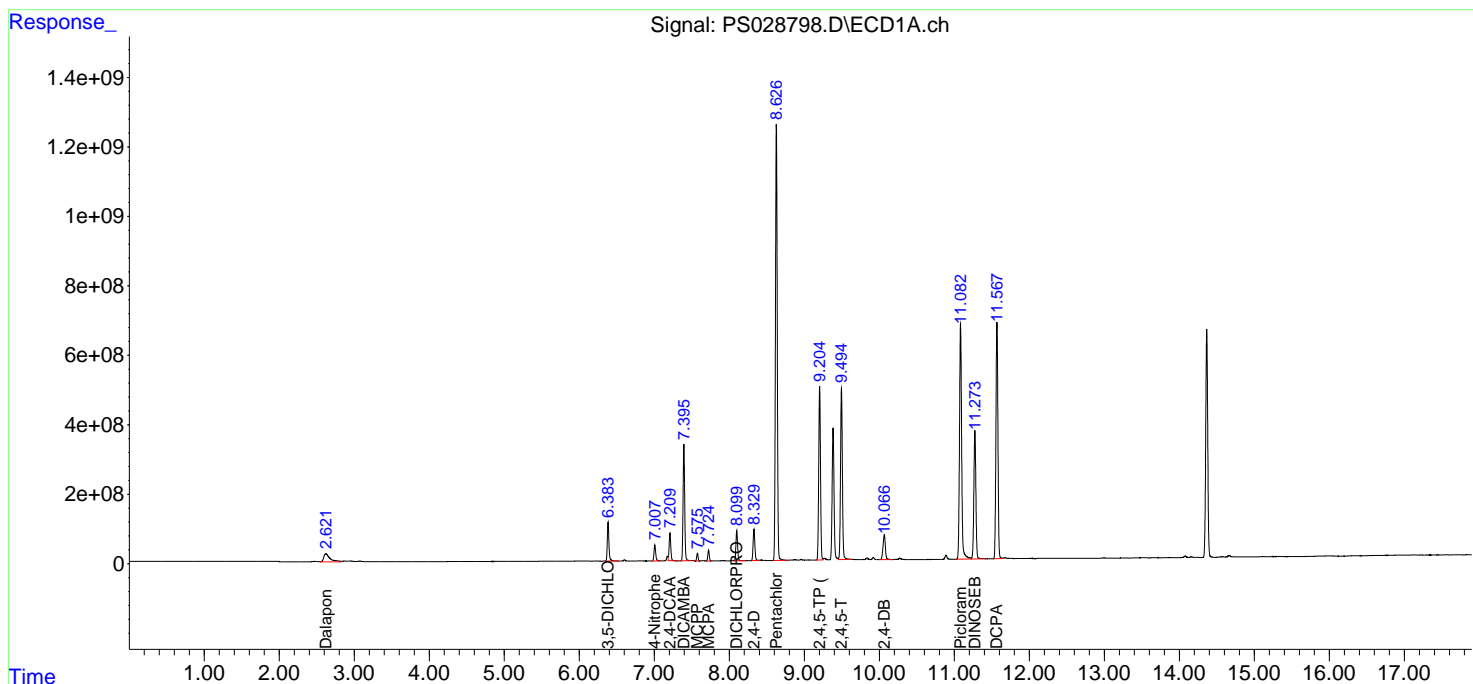
(f)=RT Delta > 1/2 Window (#)=Amounts differ by > 25% (m)=manual int.

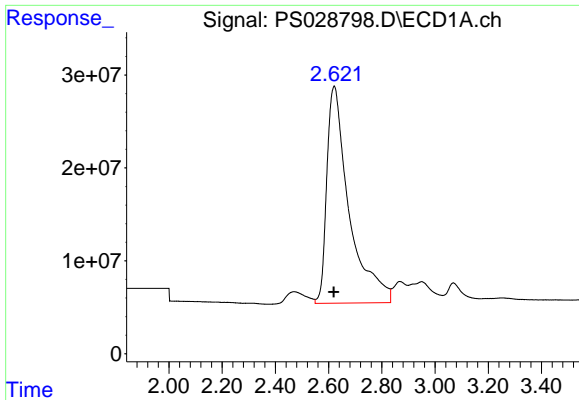
Data Path : Z:\pestpcbsrv\HPCHEM1\ECD_S\Data\PS122324\
 Data File : PS028798.D
 Signal(s) : Signal #1: ECD1A.ch Signal #2: ECD2B.ch
 Acq On : 23 Dec 2024 15:46
 Operator : AR\AJ
 Sample : PB165776BS
 Misc :
 ALS Vial : 12 Sample Multiplier: 1

Instrument :
 ECD_S
 ClientSampleId :
 PB165776BS

Integration File signal 1: autoint1.e
 Integration File signal 2: autoint2.e
 Quant Time: Dec 30 04:29:43 2024
 Quant Method : Z:\pestpcbsrv\HPCHEM1\ECD_S\Method\PS122324.M
 Quant Title : 8080.M
 QLast Update : Mon Dec 23 13:44:25 2024
 Response via : Initial Calibration
 Integrator: ChemStation

Volume Inj. : 1 µl
 Signal #1 Phase : ZB-MR1 Signal #2 Phase: ZB-MR2
 Signal #1 Info : 30M x 0.32mm x0.5 Signal #2 Info : 30M x 0.32mm x 0.25µm

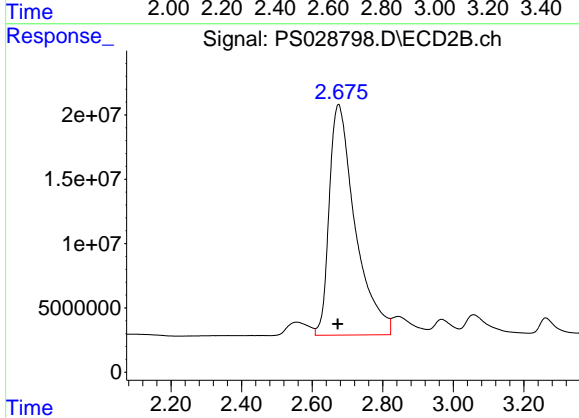




#1 Dalapon

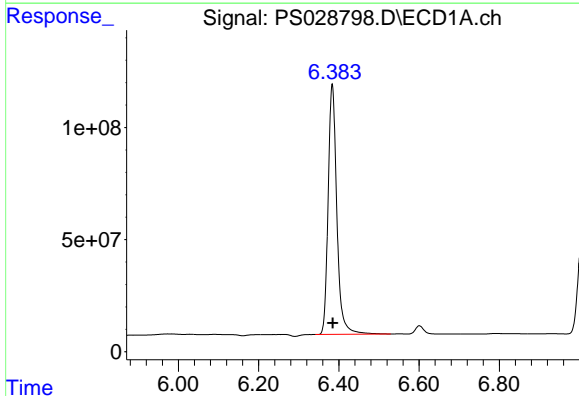
R.T.: 2.621 min
 Delta R.T.: 0.001 min
 Response: 1358303902
 Conc: 482.24 ng/ml

Instrument :
 ECD_S
 ClientSampleId :
 PB165776BS



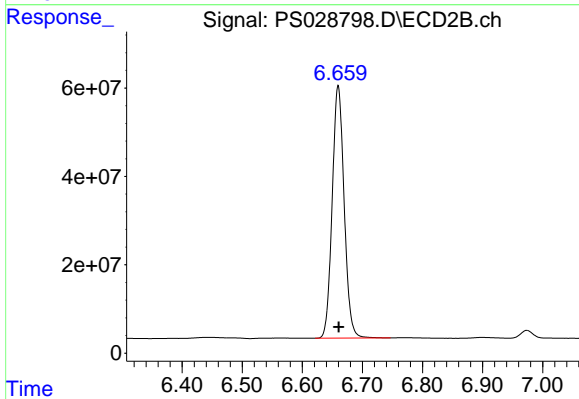
#1 Dalapon

R.T.: 2.675 min
 Delta R.T.: 0.002 min
 Response: 913177245
 Conc: 463.87 ng/ml



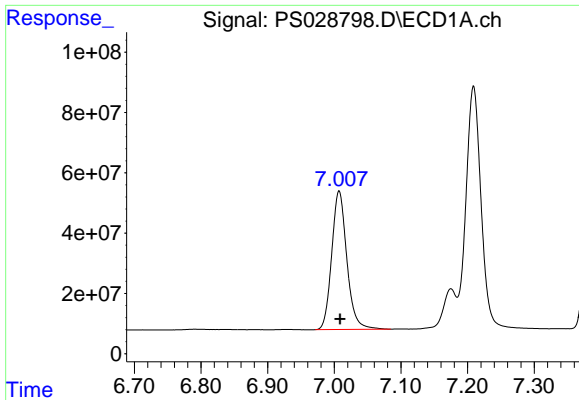
#2 3,5-DICHLOROBENZOIC ACID

R.T.: 6.384 min
 Delta R.T.: -0.001 min
 Response: 1679190823
 Conc: 509.60 ng/ml



#2 3,5-DICHLOROBENZOIC ACID

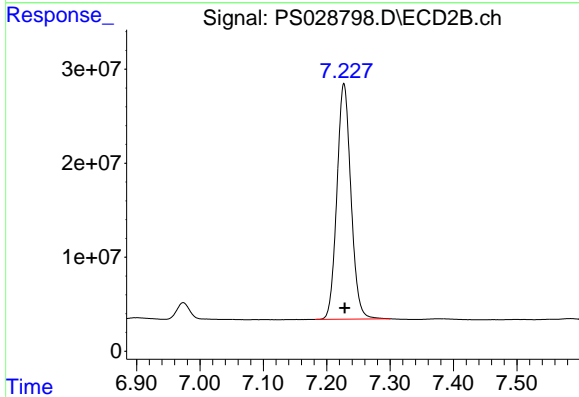
R.T.: 6.660 min
 Delta R.T.: 0.000 min
 Response: 789653152
 Conc: 476.39 ng/ml



#3 4-Nitrophenol

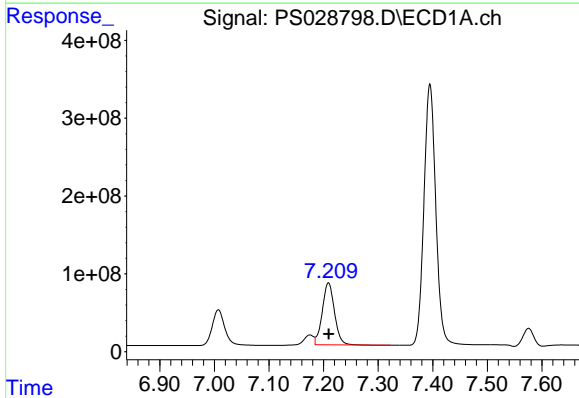
R.T.: 7.007 min
 Delta R.T.: -0.001 min
 Response: 726388218
 Conc: 483.60 ng/ml

Instrument :
 ECD_S
 ClientSampleId :
 PB165776BS



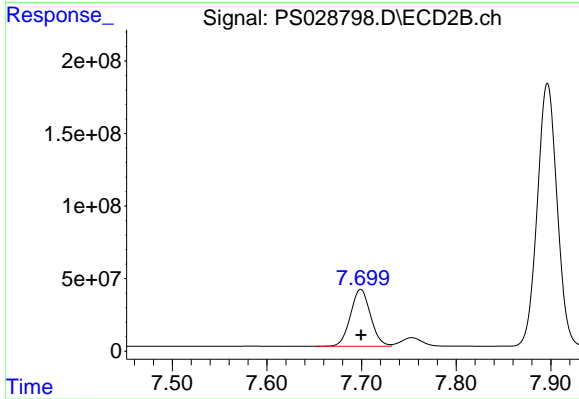
#3 4-Nitrophenol

R.T.: 7.227 min
 Delta R.T.: -0.001 min
 Response: 385766118
 Conc: 460.95 ng/ml



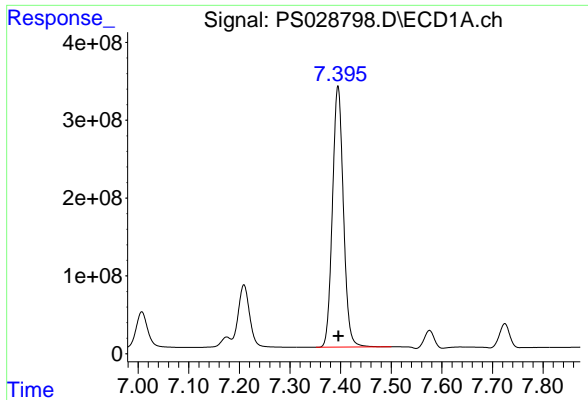
#4 2,4-DCAA

R.T.: 7.209 min
 Delta R.T.: 0.000 min
 Response: 1237539819
 Conc: 547.09 ng/ml



#4 2,4-DCAA

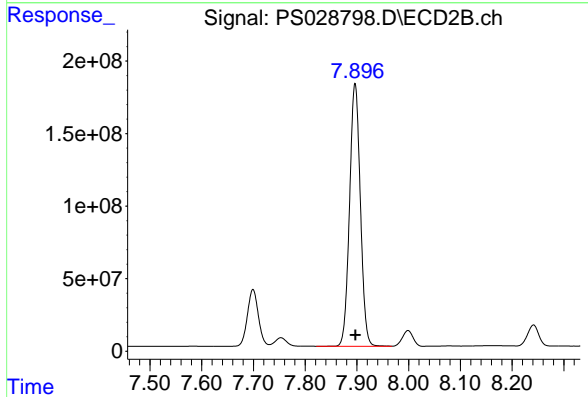
R.T.: 7.699 min
 Delta R.T.: 0.000 min
 Response: 577009805
 Conc: 512.65 ng/ml



#5 DICAMBA

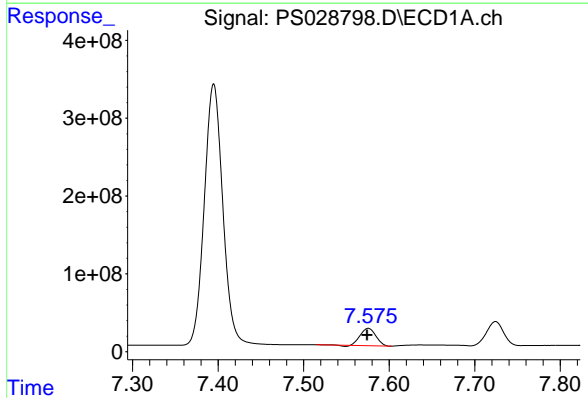
R.T.: 7.395 min
 Delta R.T.: -0.001 min
 Response: 5049611035
 Conc: 512.10 ng/ml

Instrument :
 ECD_S
 ClientSampleId :
 PB165776BS



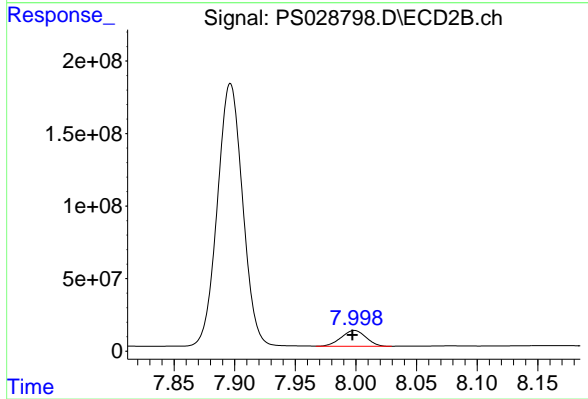
#5 DICAMBA

R.T.: 7.896 min
 Delta R.T.: 0.000 min
 Response: 2628052983
 Conc: 478.71 ng/ml



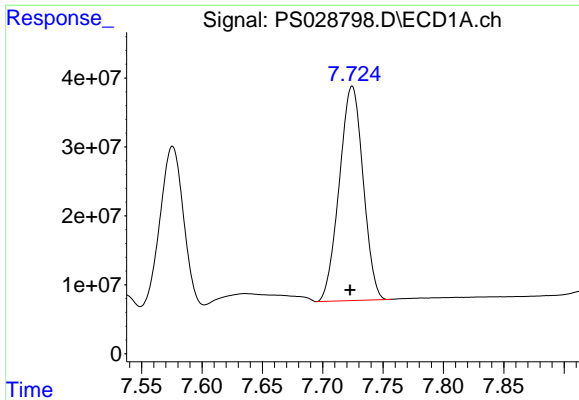
#6 MCPP

R.T.: 7.576 min
 Delta R.T.: 0.002 min
 Response: 282663193
 Conc: 45.39 ug/ml



#6 MCPP

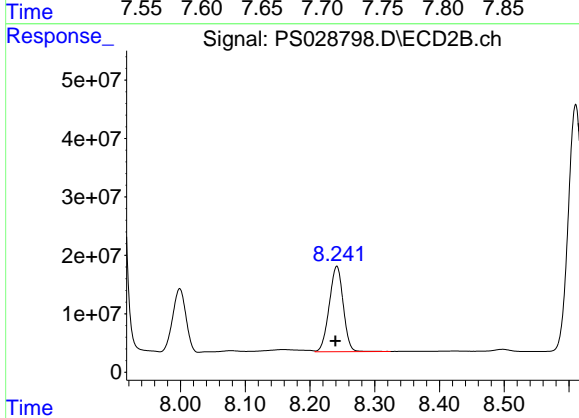
R.T.: 7.999 min
 Delta R.T.: 0.002 min
 Response: 154551303
 Conc: 47.30 ug/ml



#7 MCPA

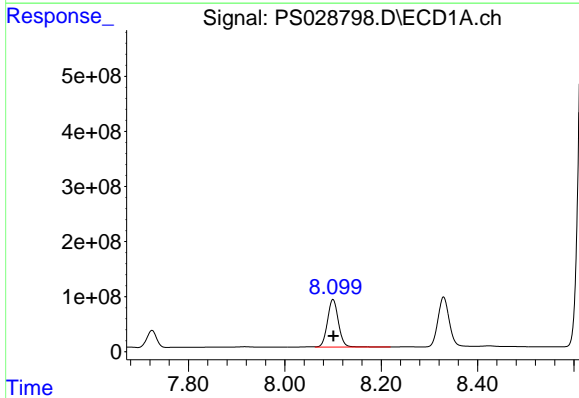
R.T.: 7.724 min
Delta R.T.: 0.002 min
Response: 426805011
Conc: 48.69 ug/ml

Instrument :
ECD_S
ClientSampleId :
PB165776BS



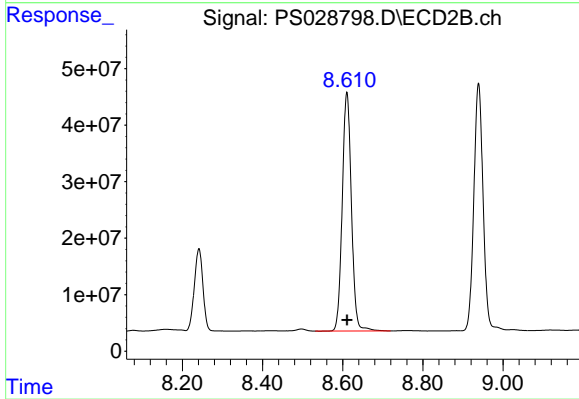
#7 MCPA

R.T.: 8.241 min
Delta R.T.: 0.002 min
Response: 218964705
Conc: 47.26 ug/ml



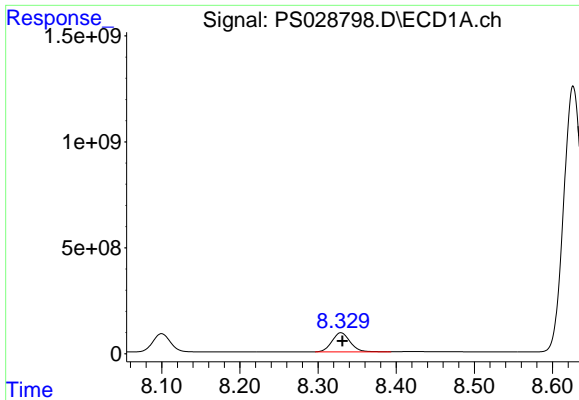
#8 DICHLORPROP

R.T.: 8.100 min
Delta R.T.: -0.001 min
Response: 1360420072
Conc: 512.75 ng/ml



#8 DICHLORPROP

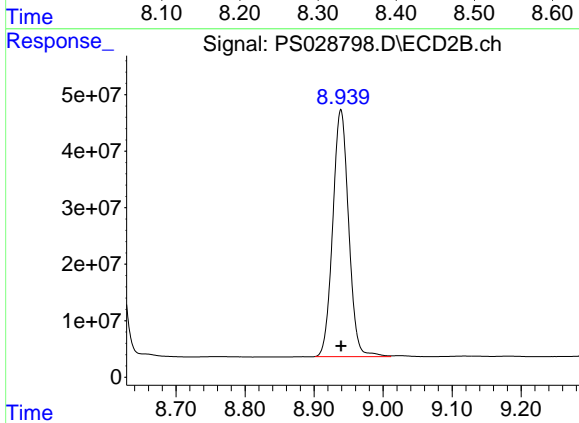
R.T.: 8.610 min
Delta R.T.: 0.000 min
Response: 671863402
Conc: 486.98 ng/ml



#9 2,4-D

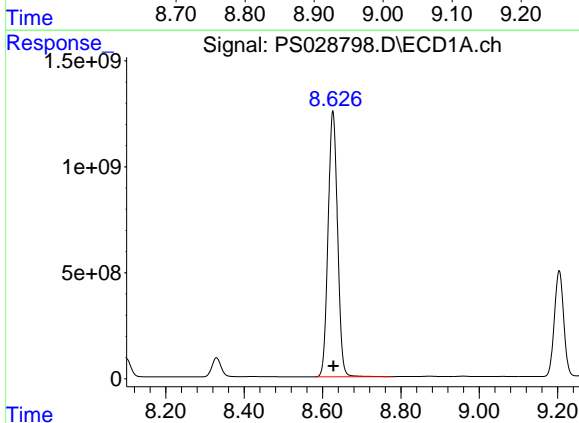
R.T.: 8.329 min
 Delta R.T.: -0.002 min
 Response: 1462617907
 Conc: 513.28 ng/ml

Instrument :
 ECD_S
 ClientSampleId :
 PB165776BS



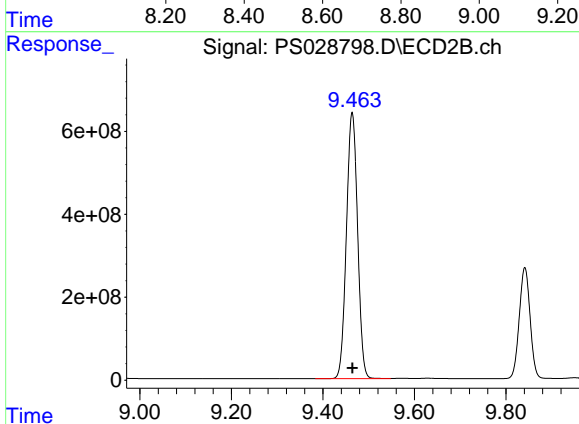
#9 2,4-D

R.T.: 8.939 min
 Delta R.T.: 0.000 min
 Response: 699147681
 Conc: 484.46 ng/ml



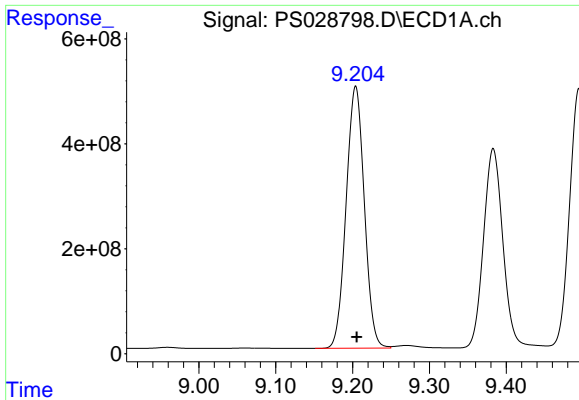
#10 Pentachlorophenol

R.T.: 8.627 min
 Delta R.T.: -0.002 min
 Response: 21037599396
 Conc: 538.50 ng/ml



#10 Pentachlorophenol

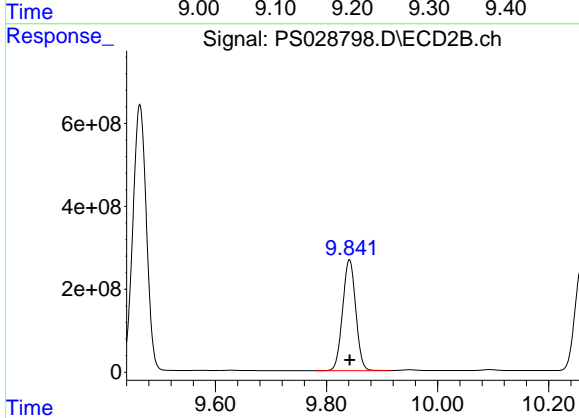
R.T.: 9.464 min
 Delta R.T.: 0.000 min
 Response: 10876367242
 Conc: 498.95 ng/ml



#11 2,4,5-TP (SILVEX)

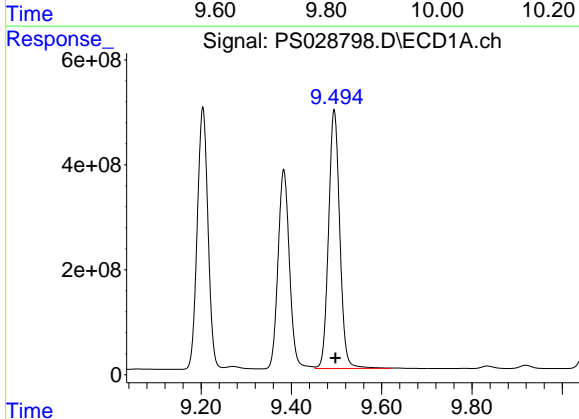
R.T.: 9.204 min
 Delta R.T.: -0.001 min
 Response: 8203653829
 Conc: 522.22 ng/ml

Instrument :
 ECD_S
 ClientSampleId :
 PB165776BS



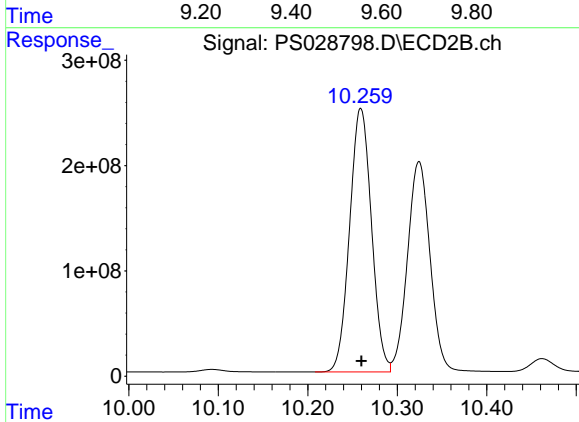
#11 2,4,5-TP (SILVEX)

R.T.: 9.841 min
 Delta R.T.: 0.000 min
 Response: 4390916804
 Conc: 488.77 ng/ml



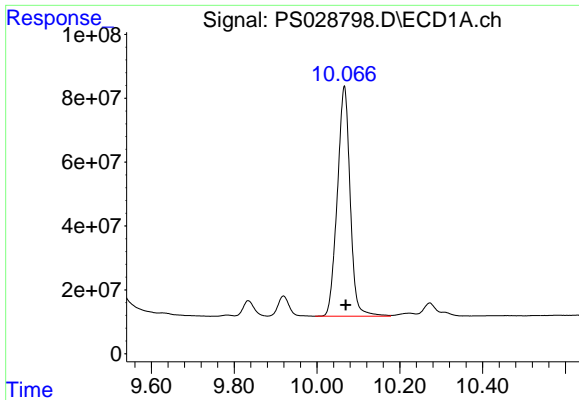
#12 2,4,5-T

R.T.: 9.495 min
 Delta R.T.: -0.003 min
 Response: 8496654682
 Conc: 522.25 ng/ml



#12 2,4,5-T

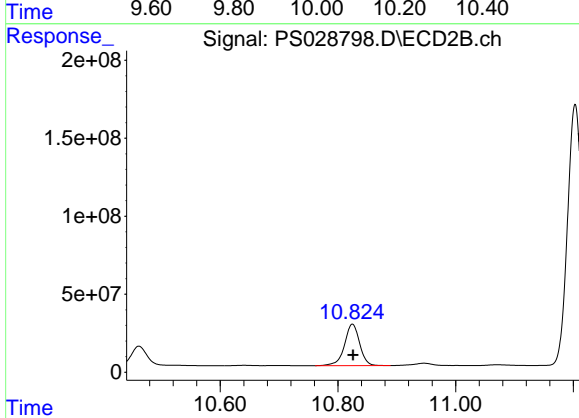
R.T.: 10.259 min
 Delta R.T.: 0.000 min
 Response: 4254363586
 Conc: 488.49 ng/ml



#13 2,4-DB

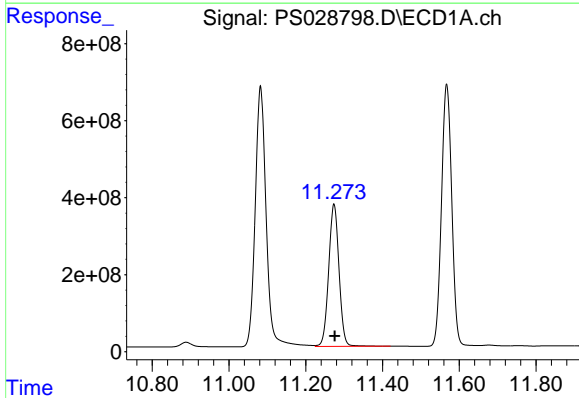
R.T.: 10.066 min
 Delta R.T.: -0.003 min
 Response: 1549804433
 Conc: 496.48 ng/ml

Instrument :
 ECD_S
 ClientSampleId :
 PB165776BS



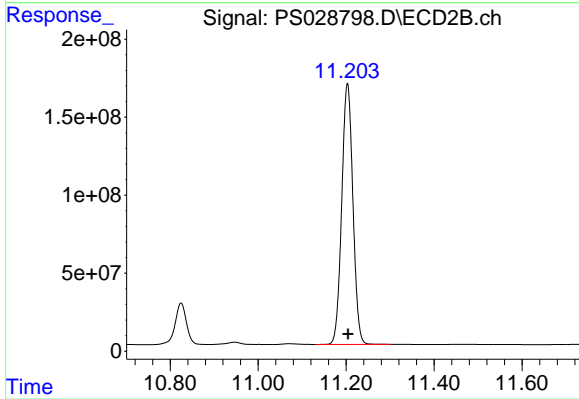
#13 2,4-DB

R.T.: 10.825 min
 Delta R.T.: -0.001 min
 Response: 473003271
 Conc: 487.08 ng/ml



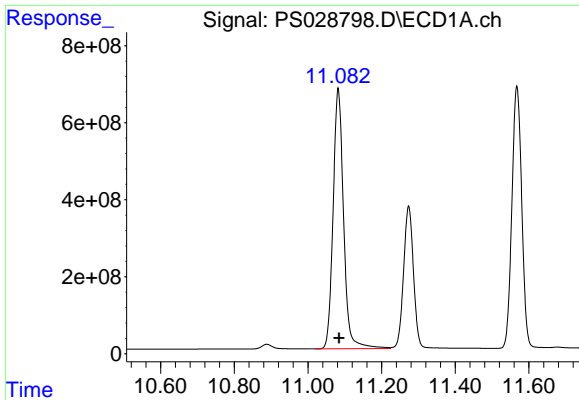
#14 DINOSEB

R.T.: 11.274 min
 Delta R.T.: -0.002 min
 Response: 6906146827
 Conc: 513.78 ng/ml



#14 DINOSEB

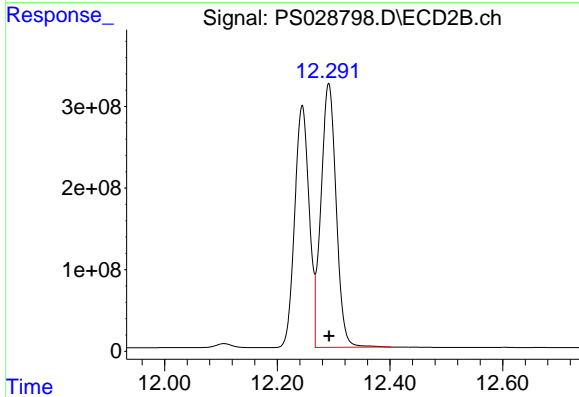
R.T.: 11.203 min
 Delta R.T.: 0.000 min
 Response: 2943878768
 Conc: 477.97 ng/ml



#15 Picloram

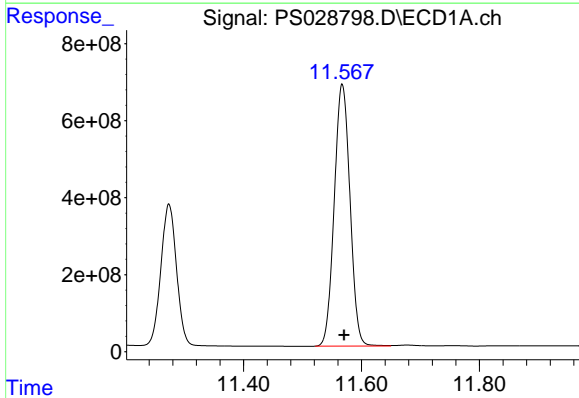
R.T.: 11.082 min
 Delta R.T.: -0.002 min
 Response: 13388137477
 Conc: 499.32 ng/ml

Instrument :
 ECD_S
 ClientSampleId :
 PB165776BS



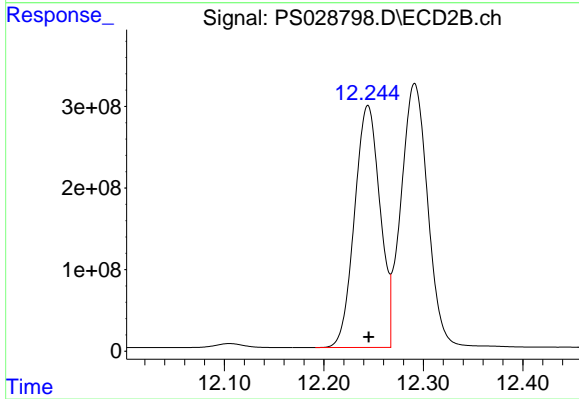
#15 Picloram

R.T.: 12.291 min
 Delta R.T.: 0.000 min
 Response: 6048539659
 Conc: 471.11 ng/ml



#16 DCPA

R.T.: 11.567 min
 Delta R.T.: -0.003 min
 Response: 12602475043
 Conc: 523.99 ng/ml



#16 DCPA

R.T.: 12.244 min
 Delta R.T.: 0.000 min
 Response: 5287593826
 Conc: 492.12 ng/ml