

Data Path : Z:\pestpcbsrv\HPCHEM1\ECD_S\Data\PS122324\
 Data File : PS028801.D
 Signal(s) : Signal #1: ECD1A.ch Signal #2: ECD2B.ch
 Acq On : 23 Dec 2024 16:58
 Operator : AR\AJ
 Sample : P5306-01
 Misc :
 ALS Vial : 13 Sample Multiplier: 1

Instrument :
 ECD_S
 ClientSampleId :
 OU4-VSL-07-121224

Integration File signal 1: autoint1.e
 Integration File signal 2: autoint2.e
 Quant Time: Dec 24 01:54:45 2024
 Quant Method : Z:\pestpcbsrv\HPCHEM1\ECD_S\Method\PS122324.M
 Quant Title : 8080.M
 QLast Update : Mon Dec 23 13:44:25 2024
 Response via : Initial Calibration
 Integrator: ChemStation

Volume Inj. : 1 µl
 Signal #1 Phase : ZB-MR2 Signal #2 Phase: ZB-MR2
 Signal #1 Info : 30M x 0.32mm x0.5 Signal #2 Info : 30M x 0.32mm x 0.25µm

| Compound | RT#1 | RT#2 | Resp#1 | Resp#2 | ng/ml | ng/ml |
|-----------------------------|---------|---------|----------|----------|---------|-----------|
| ----- | | | | | | |
| System Monitoring Compounds | | | | | | |
| 4) S 2,4-DCAA | 7.208 | 7.699 | 516.9E6 | 173.4E6 | 228.510 | 154.041 # |
| Target Compounds | | | | | | |
| 2) T 3,5-DICHL... | 6.367 | 0.000 | 6345178 | 0 | 1.926 | N.D. # |
| 3) T 4-Nitroph... | 7.015 | 7.239 | 144.9E6 | 3652815 | 96.454 | 4.365 # |
| 6) T MCPP | 7.569 | 8.020 | 5659296 | 14333988 | <MDL | 4.386 # |
| 7) T MCPA | 7.746 | 0.000 | 16269781 | 0 | 1.856 | N.D. # |
| 8) T DICHLORPROP | 8.113 | 8.578f | 16248797 | 694972 | 6.124 | <MDL # |
| 10) T Pentachlo... | 8.624 | 9.464 | 2819504 | 10605948 | <MDL | <MDL # |
| 11) T 2,4,5-TP ... | 0.000 | 9.871f | 0 | 20914611 | N.D. | 2.328 |
| 12) T 2,4,5-T | 9.458f | 10.286f | 41338715 | 57814437 | 2.541 | 6.638 # |
| 13) T 2,4-DB | 10.049 | 0.000 | 182.0E6 | 0 | 58.297 | N.D. # |
| 14) T DINOSEB | 11.306f | 11.222 | 78240736 | 5701313 | 5.821 | <MDL # |
| 15) T Picloram | 11.084 | 12.292 | 430.6E6 | 65635584 | 16.060 | 5.112 # |
| 16) T DCPA | 0.000 | 12.292f | 0 | 65635584 | N.D. | 6.109 |

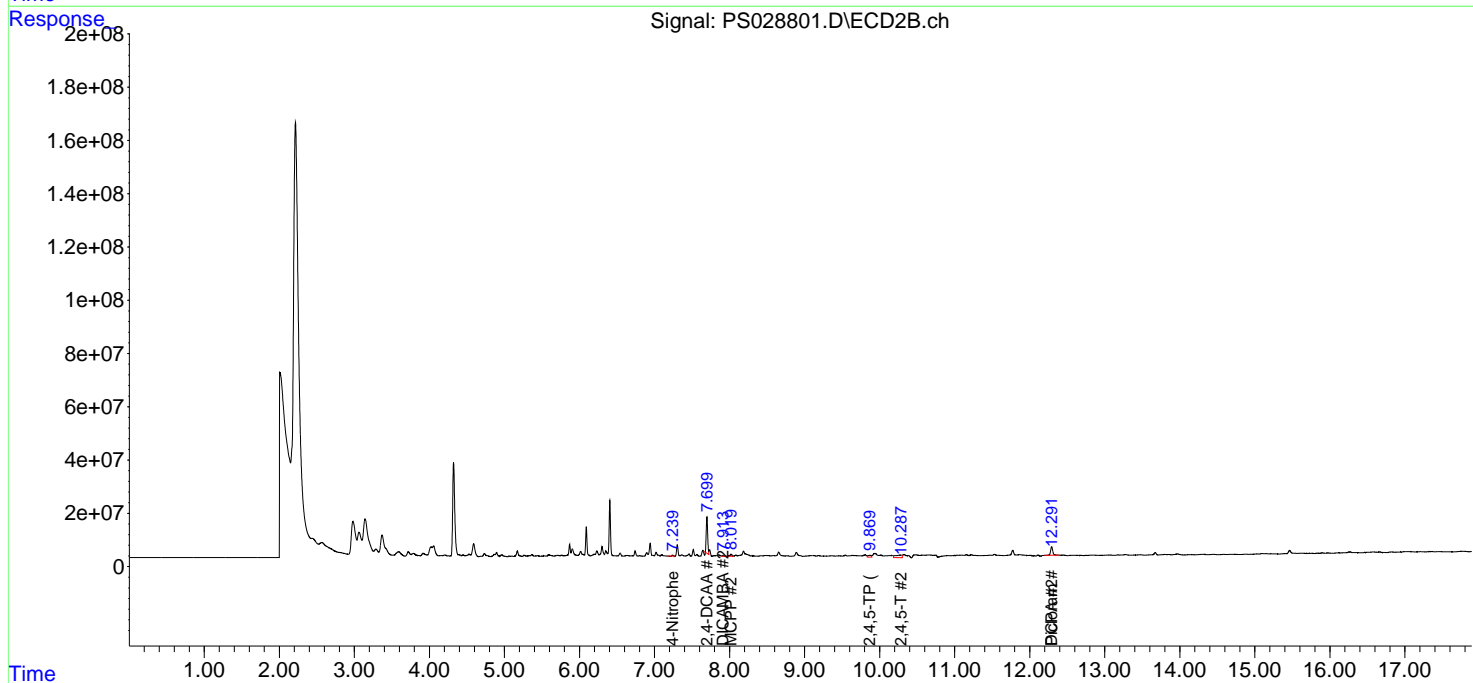
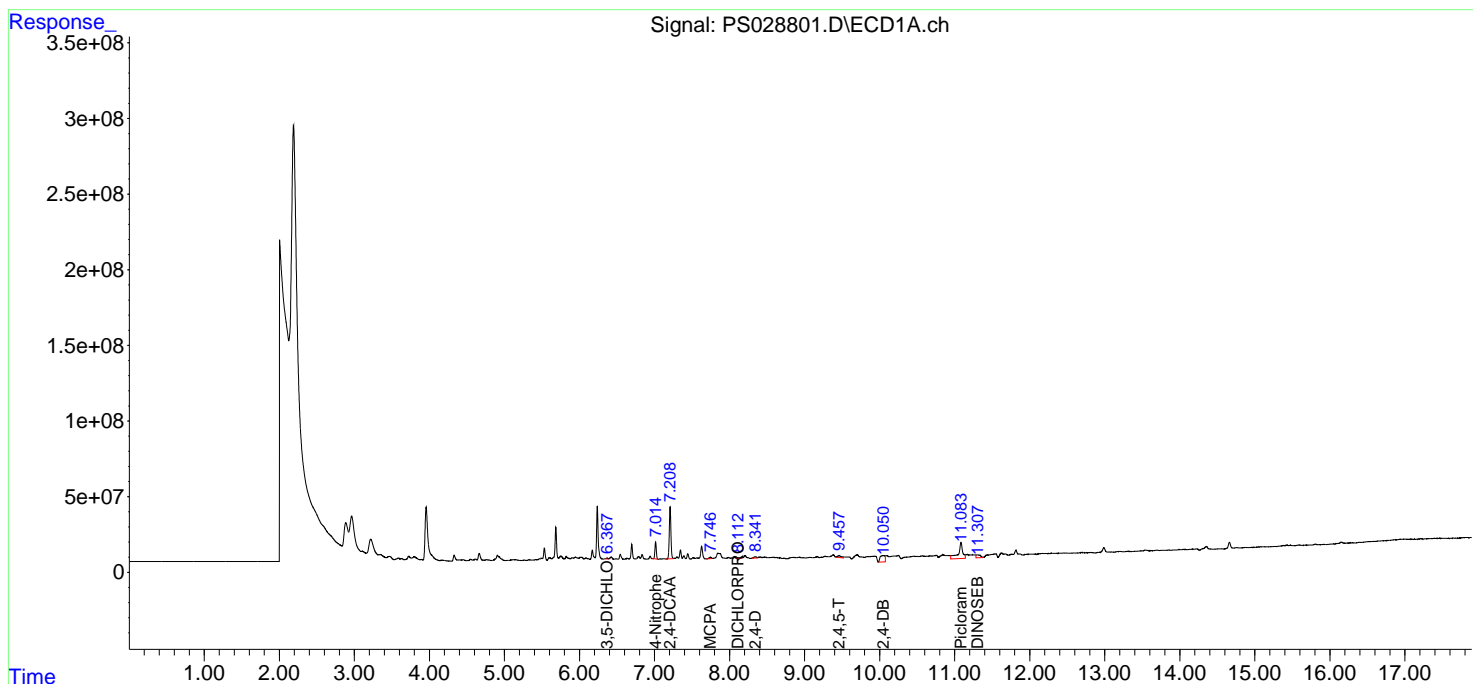
(f)=RT Delta > 1/2 Window (#)=Amounts differ by > 25% (m)=manual int.

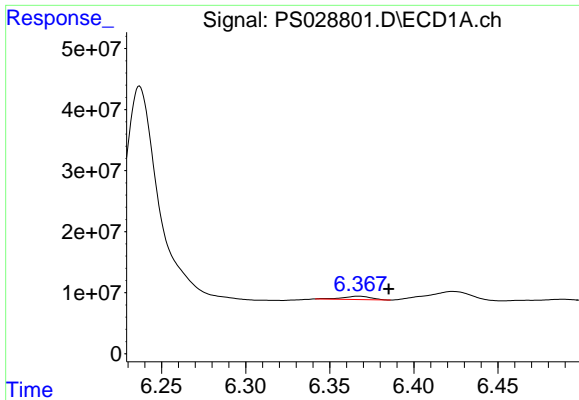
Data Path : Z:\pestpcbsrv\HPCHEM1\ECD_S\Data\PS122324\
 Data File : PS028801.D
 Signal(s) : Signal #1: ECD1A.ch Signal #2: ECD2B.ch
 Acq On : 23 Dec 2024 16:58
 Operator : AR\AJ
 Sample : P5306-01
 Misc :
 ALS Vial : 13 Sample Multiplier: 1

Instrument :
 ECD_S
 ClientSampleId :
 OU4-VSL-07-121224

Integration File signal 1: autoint1.e
 Integration File signal 2: autoint2.e
 Quant Time: Dec 24 01:54:45 2024
 Quant Method : Z:\pestpcbsrv\HPCHEM1\ECD_S\Method\PS122324.M
 Quant Title : 8080.M
 QLast Update : Mon Dec 23 13:44:25 2024
 Response via : Initial Calibration
 Integrator: ChemStation

Volume Inj. : 1 µl
 Signal #1 Phase : ZB-MR1 Signal #2 Phase: ZB-MR2
 Signal #1 Info : 30M x 0.32mm x0.5 Signal #2 Info : 30M x 0.32mm x 0.25µm

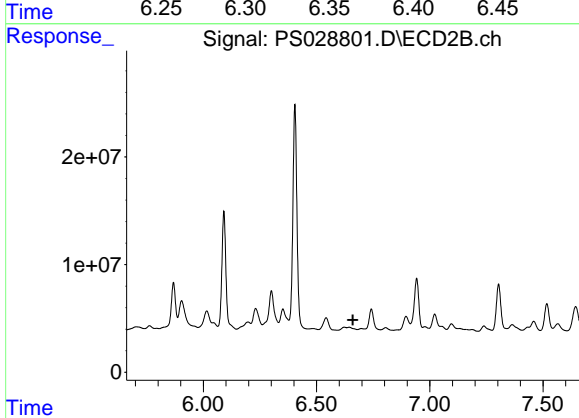




#2 3,5-DICHLORO BENZOIC ACID

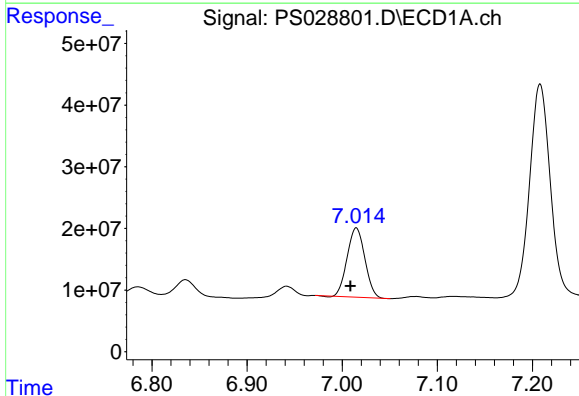
R.T.: 6.367 min
 Delta R.T.: -0.018 min
 Response: 6345178
 Conc: 1.93 ng/ml

Instrument : ECD_S
 Client Sample Id : OU4-VSL-07-121224



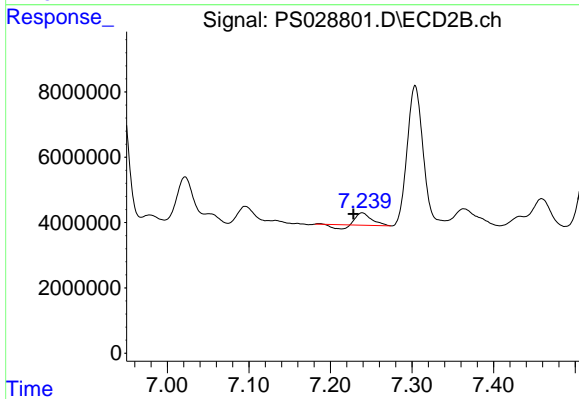
#2 3,5-DICHLORO BENZOIC ACID

R.T.: 0.000 min
 Exp R.T. : 6.661 min
 Response: 0
 Conc: N.D.



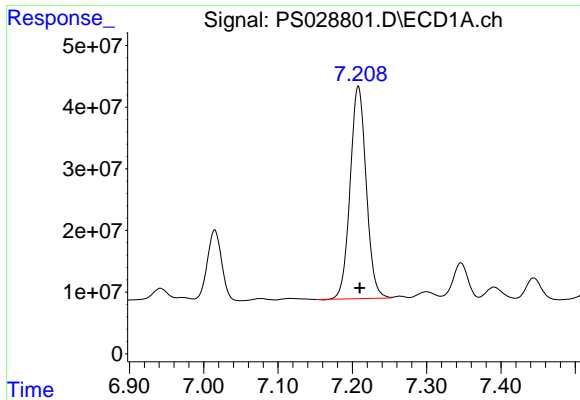
#3 4-Nitrophenol

R.T.: 7.015 min
 Delta R.T.: 0.006 min
 Response: 144879154
 Conc: 96.45 ng/ml



#3 4-Nitrophenol

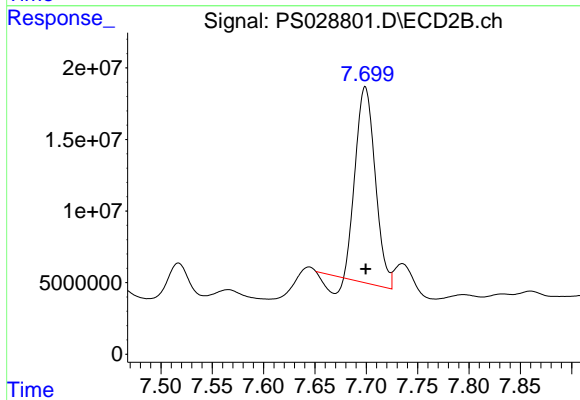
R.T.: 7.239 min
 Delta R.T.: 0.011 min
 Response: 3652815
 Conc: 4.36 ng/ml



#4 2,4-DCAA

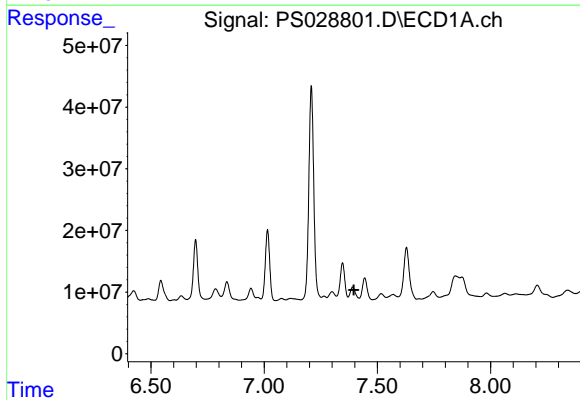
R.T.: 7.208 min
 Delta R.T.: -0.002 min
 Response: 516895298
 Conc: 228.51 ng/ml

Instrument :
 ECD_S
 ClientSampleId :
 OU4-VSL-07-121224



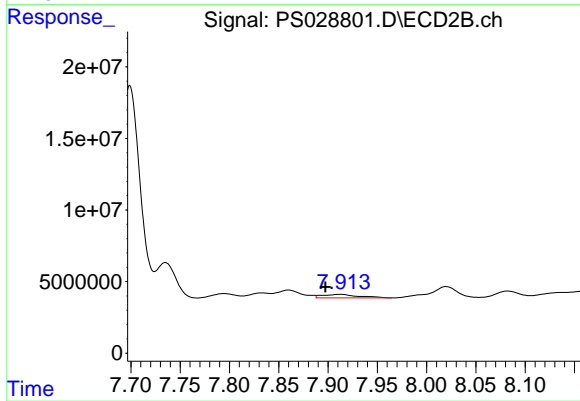
#4 2,4-DCAA

R.T.: 7.699 min
 Delta R.T.: 0.000 min
 Response: 173378752
 Conc: 154.04 ng/ml



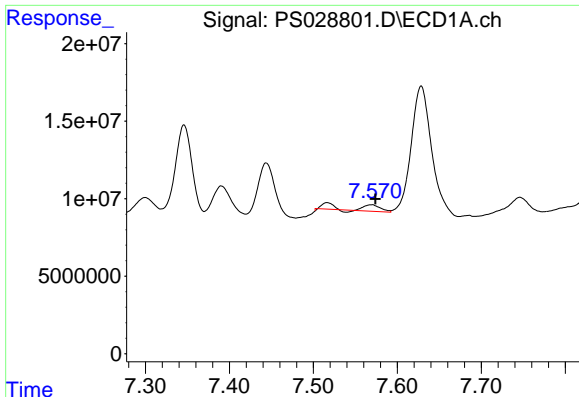
#5 DICAMBA

R.T.: 7.391 min
 Delta R.T.: -0.005 min
 Response: -52105780
 Conc: N.D.



#5 DICAMBA

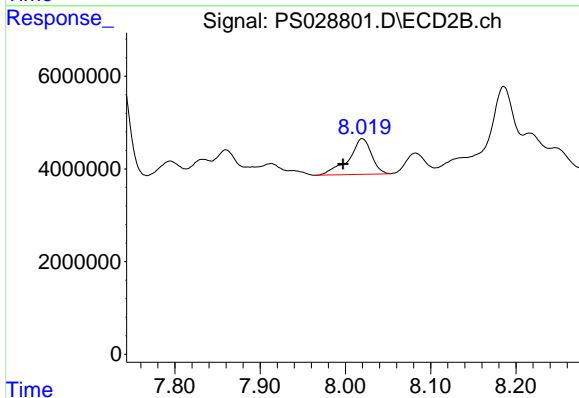
R.T.: 7.912 min
 Delta R.T.: 0.015 min
 Response: 6318751
 Conc: 1.15 ng/ml



#6 MCPP

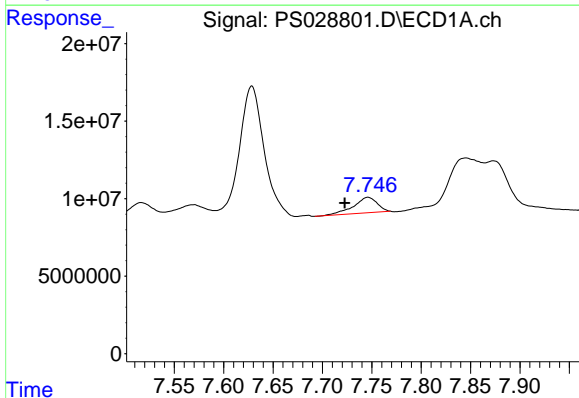
R.T.: 7.569 min
 Delta R.T.: -0.005 min
 Response: 5659296
 Conc: N.D.

Instrument :
 ECD_S
 ClientSampleId :
 OU4-VSL-07-121224



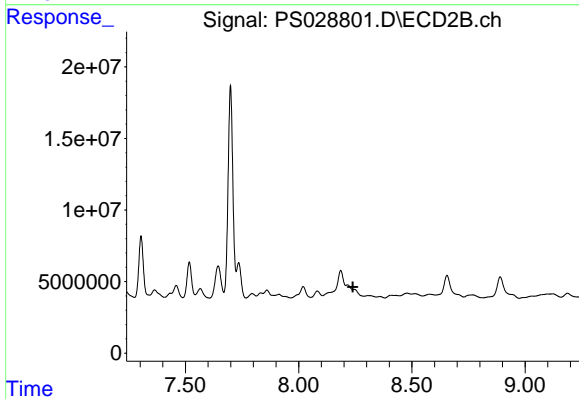
#6 MCPP

R.T.: 8.020 min
 Delta R.T.: 0.023 min
 Response: 14333988
 Conc: 4.39 ug/ml



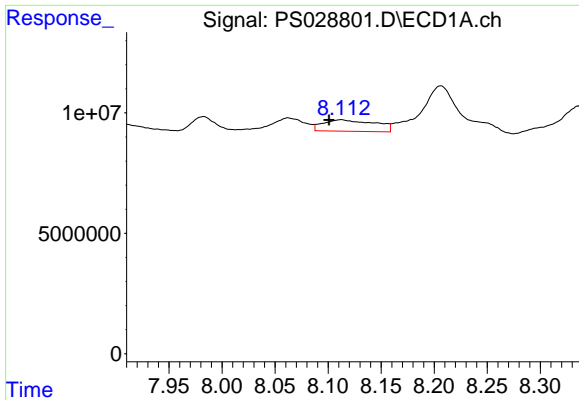
#7 MCPA

R.T.: 7.746 min
 Delta R.T.: 0.023 min
 Response: 16269781
 Conc: 1.86 ug/ml



#7 MCPA

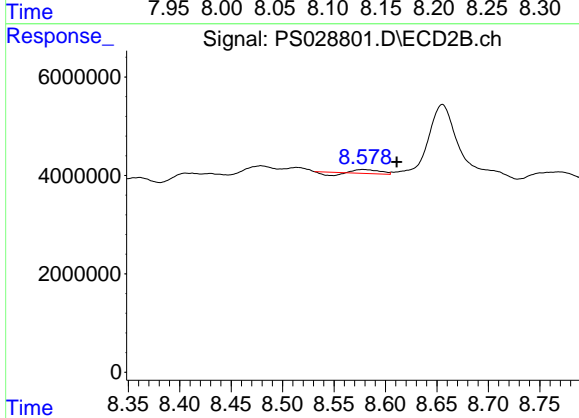
R.T.: 0.000 min
 Exp R.T.: 8.239 min
 Response: 0
 Conc: N.D.



#8 DICHLORPROP

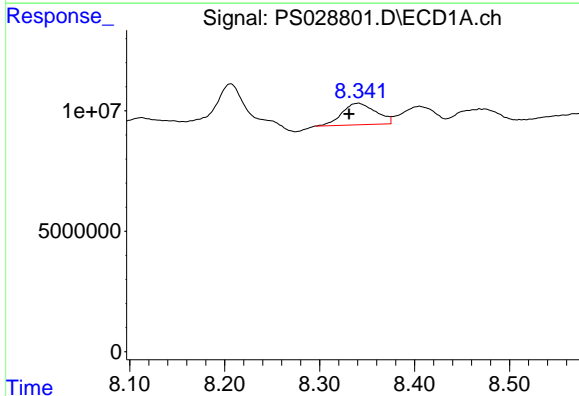
R.T.: 8.113 min
 Delta R.T.: 0.012 min
 Response: 16248797
 Conc: 6.12 ng/ml

Instrument :
 ECD_S
 ClientSampleId :
 OU4-VSL-07-121224



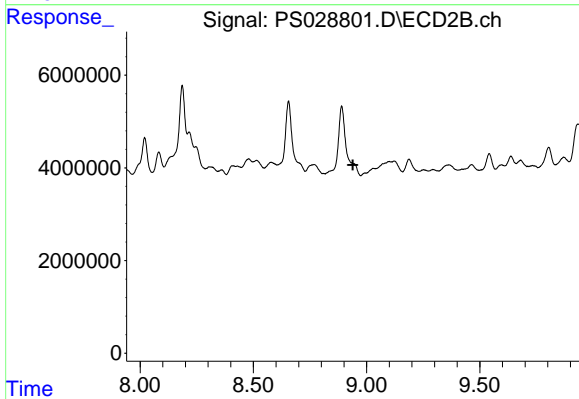
#8 DICHLORPROP

R.T.: 8.578 min
 Delta R.T.: -0.033 min
 Response: 694972
 Conc: N.D.



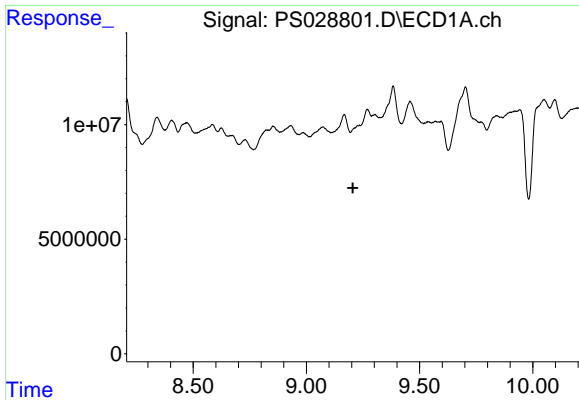
#9 2,4-D

R.T.: 8.341 min
 Delta R.T.: 0.009 min
 Response: 22243745
 Conc: 7.81 ng/ml



#9 2,4-D

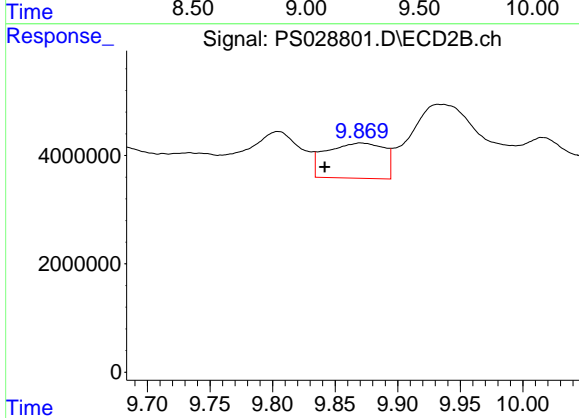
R.T.: 8.890 min
 Delta R.T.: -0.049 min
 Response: -15007292
 Conc: N.D.



#11 2,4,5-TP (SILVEX)

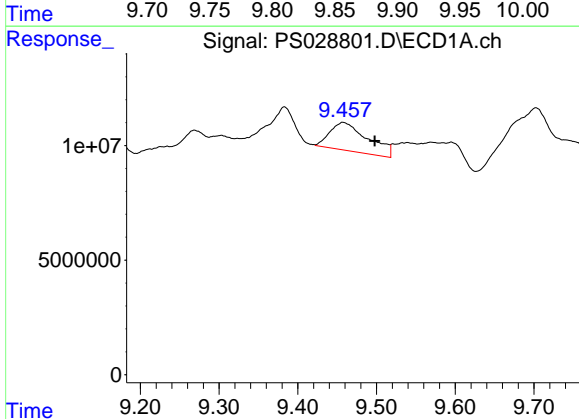
R.T.: 0.000 min
 Exp R.T.: 9.205 min
 Response: 0
 Conc: N.D.

Instrument :
 ECD_S
 ClientSampleId :
 OU4-VSL-07-121224



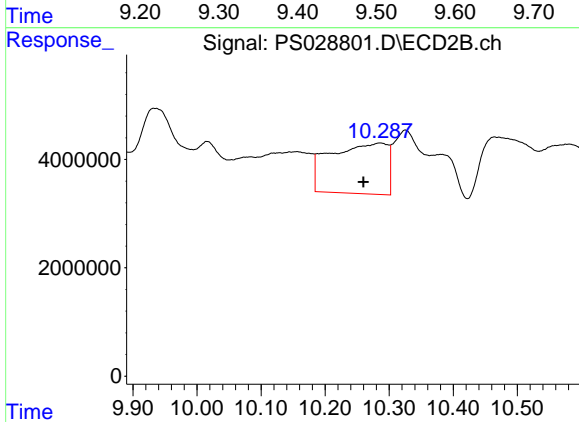
#11 2,4,5-TP (SILVEX)

R.T.: 9.871 min
 Delta R.T.: 0.029 min
 Response: 20914611
 Conc: 2.33 ng/ml



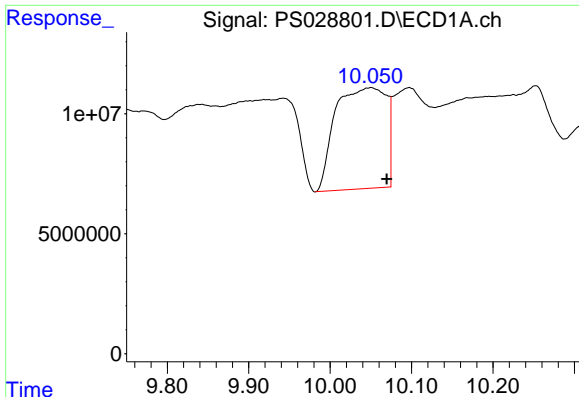
#12 2,4,5-T

R.T.: 9.458 min
 Delta R.T.: -0.040 min
 Response: 41338715
 Conc: 2.54 ng/ml



#12 2,4,5-T

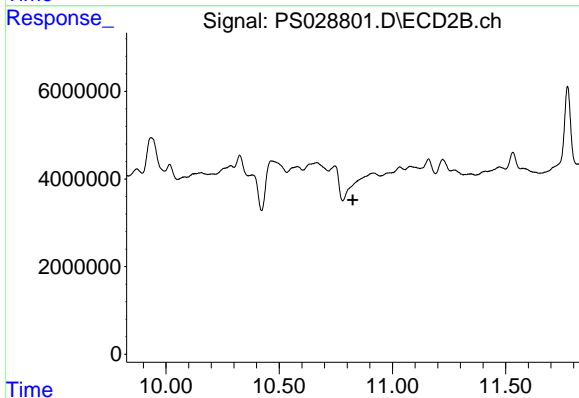
R.T.: 10.286 min
 Delta R.T.: 0.026 min
 Response: 57814437
 Conc: 6.64 ng/ml



#13 2,4-DB

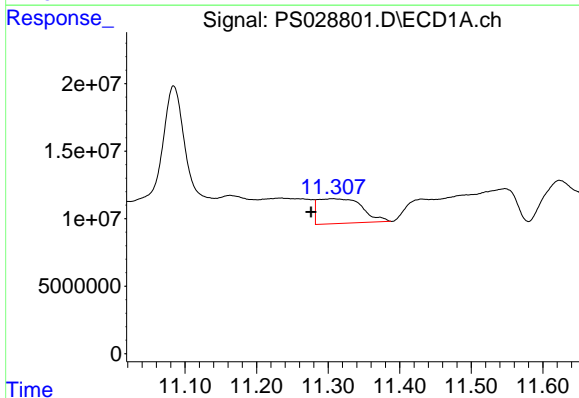
R.T.: 10.049 min
 Delta R.T.: -0.020 min
 Response: 181981025
 Conc: 58.30 ng/ml

Instrument :
 ECD_S
 ClientSampleId :
 OU4-VSL-07-121224



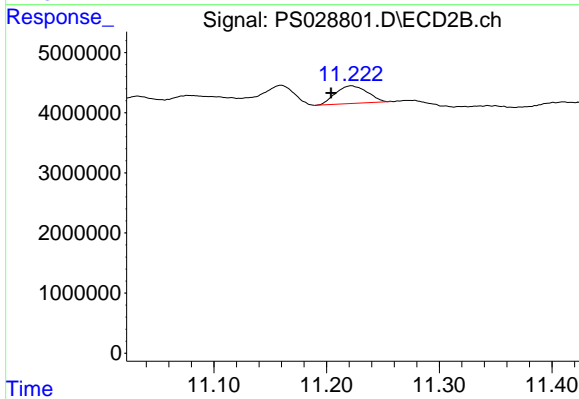
#13 2,4-DB

R.T.: 0.000 min
 Exp R.T. : 10.826 min
 Response: 0
 Conc: N.D.



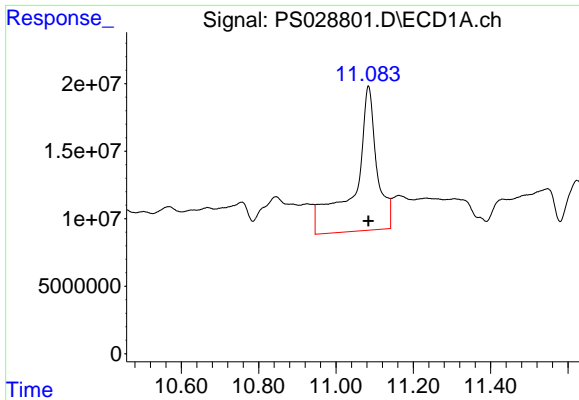
#14 DINOSEB

R.T.: 11.306 min
 Delta R.T.: 0.030 min
 Response: 78240736
 Conc: 5.82 ng/ml



#14 DINOSEB

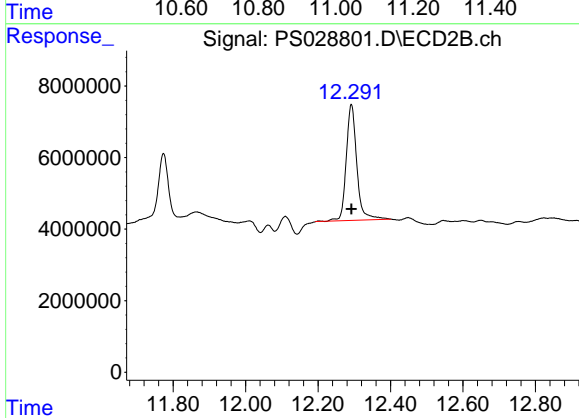
R.T.: 11.222 min
 Delta R.T.: 0.018 min
 Response: 5701313
 Conc: N.D.



#15 Picloram

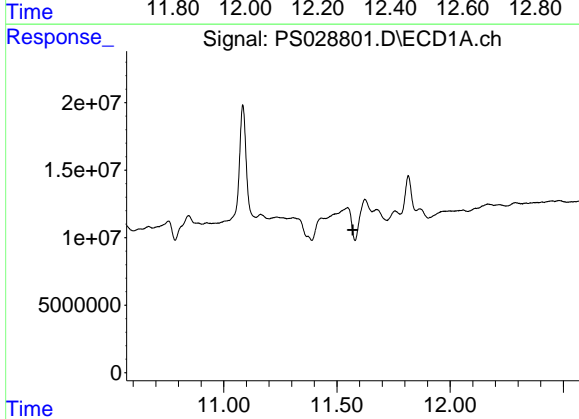
R.T.: 11.084 min
 Delta R.T.: 0.000 min
 Response: 430625647
 Conc: 16.06 ng/ml

Instrument :
 ECD_S
 ClientSampleId :
 OU4-VSL-07-121224



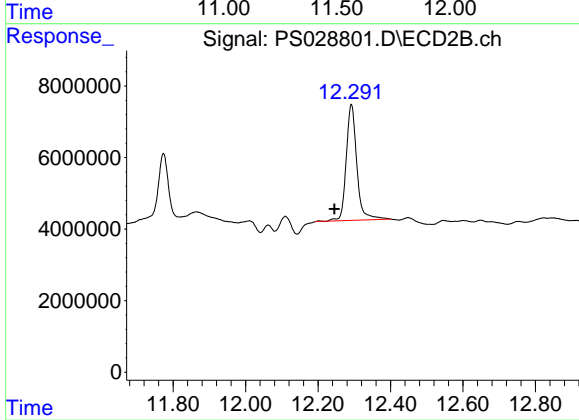
#15 Picloram

R.T.: 12.292 min
 Delta R.T.: 0.000 min
 Response: 65635584
 Conc: 5.11 ng/ml



#16 DCPA

R.T.: 0.000 min
 Exp R.T. : 11.570 min
 Response: 0
 Conc: N.D.



#16 DCPA

R.T.: 12.292 min
 Delta R.T.: 0.047 min
 Response: 65635584
 Conc: 6.11 ng/ml