

Data Path : Z:\pestpcbsrv\HPCHEM1\ECD_S\Data\PS122324\
 Data File : PS028804.D
 Signal(s) : Signal #1: ECD1A.ch Signal #2: ECD2B.ch
 Acq On : 23 Dec 2024 18:10
 Operator : AR\AJ
 Sample : P5306-07
 Misc :
 ALS Vial : 16 Sample Multiplier: 1

Instrument :
 ECD_S
 ClientSampleId :
 OU4-VSL-10-121224

Integration File signal 1: autoint1.e
 Integration File signal 2: autoint2.e
 Quant Time: Dec 24 01:55:59 2024
 Quant Method : Z:\pestpcbsrv\HPCHEM1\ECD_S\Method\PS122324.M
 Quant Title : 8080.M
 QLast Update : Mon Dec 23 13:44:25 2024
 Response via : Initial Calibration
 Integrator: ChemStation

Volume Inj. : 1 µl
 Signal #1 Phase : ZB-MR2 Signal #2 Phase: ZB-MR2
 Signal #1 Info : 30M x 0.32mm x0.5 Signal #2 Info : 30M x 0.32mm x 0.25µm

Compound	RT#1	RT#2	Resp#1	Resp#2	ng/ml	ng/ml

System Monitoring Compounds						
4) S 2,4-DCAA	7.208	7.698	703.8E6	299.6E6	311.151	266.174
Target Compounds						
2) T 3,5-DICHL...	6.367	0.000	5302236	0	1.609	N.D. #
3) T 4-Nitroph...	7.014	7.236	74210663	842770	49.406	1.007 #
5) T DICAMBA	7.392	7.906	-5897953	4672107	N.D.	<MDL
6) T MCPP	7.569	8.020	4434059	8586074	<MDL	2.627 #
7) T MCPA	7.745	0.000	7758377	0	<MDL	N.D. #
8) T DICHLORPROP	8.115	8.579f	9815158	11398429	3.699	8.262 #
9) T 2,4-D	8.342	0.000	22892320	0	8.034	N.D. #
10) T Pentachlo...	8.625	9.462	14144250	19350922	<MDL	<MDL #
11) T 2,4,5-TP ...	0.000	9.873f	0	33145572	N.D.	3.690
12) T 2,4,5-T	9.458f	10.237	45234828	109.9E6	2.780	12.623 #
13) T 2,4-DB	10.099f	0.000	380.0E6	0	121.729	N.D. #
14) T DINOSEB	11.278	11.209	84806295	22353620	6.309	3.629 #
15) T Picloram	11.088	12.295	185.8E6	3349484	6.931	<MDL #
16) T DCPA	0.000	12.295f	0	3349484	N.D.	<MDL

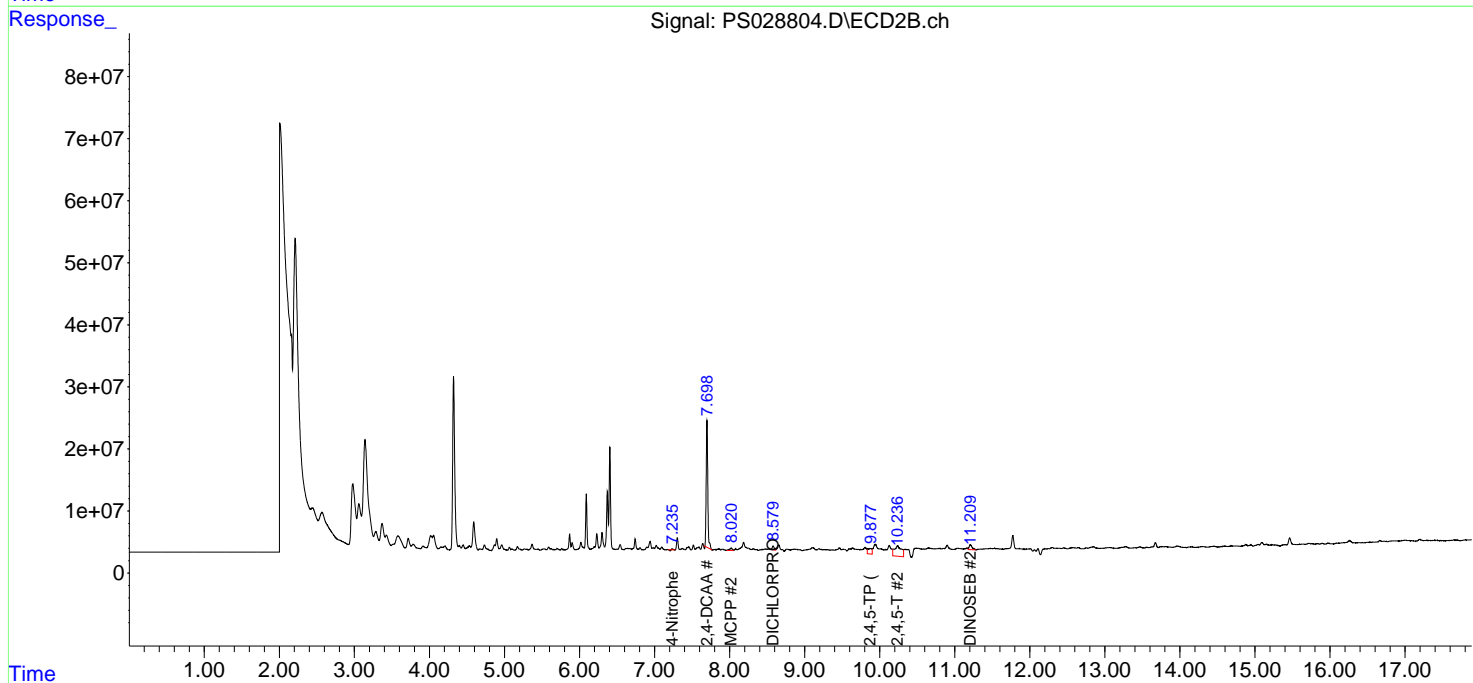
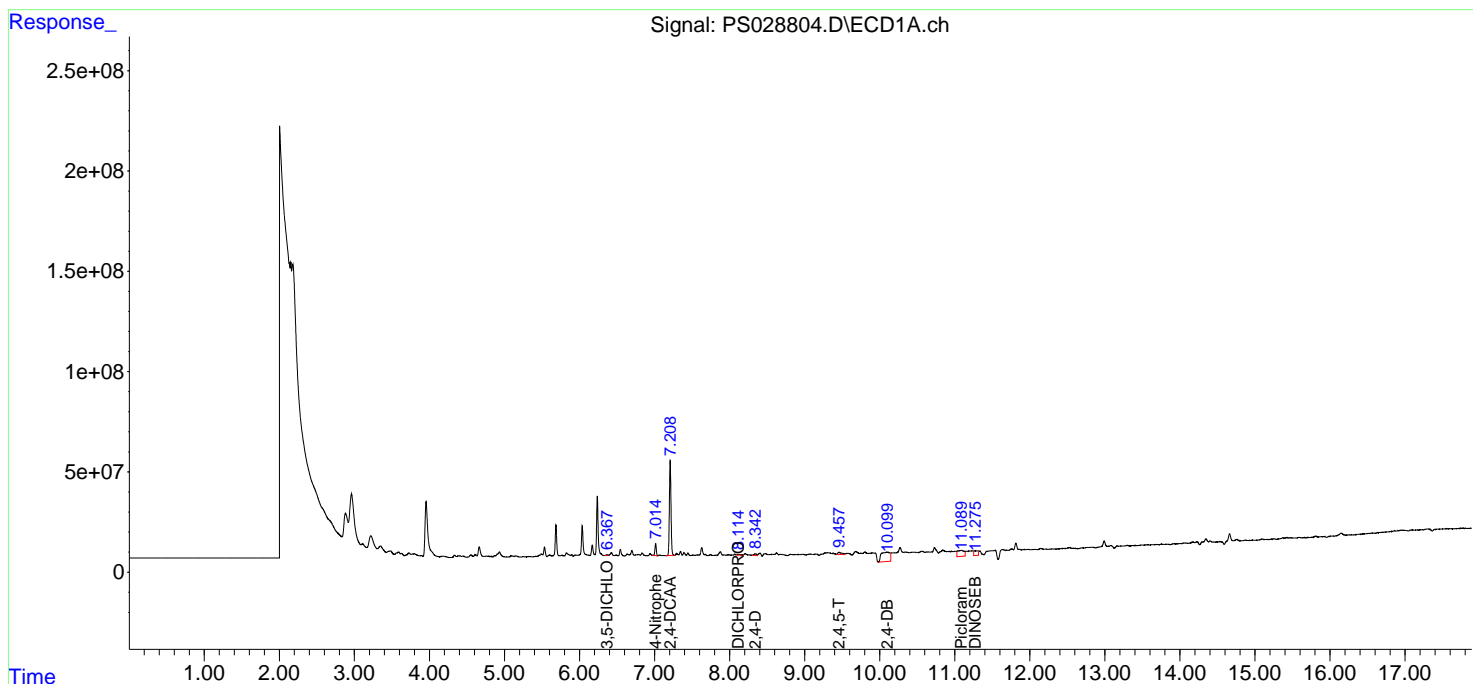
(f)=RT Delta > 1/2 Window (#)=Amounts differ by > 25% (m)=manual int.

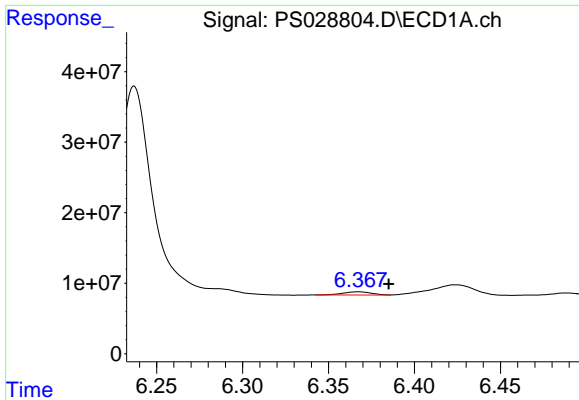
Data Path : Z:\pestpcbsrv\HPCHEM1\ECD_S\Data\PS122324\
 Data File : PS028804.D
 Signal(s) : Signal #1: ECD1A.ch Signal #2: ECD2B.ch
 Acq On : 23 Dec 2024 18:10
 Operator : AR\AJ
 Sample : P5306-07
 Misc :
 ALS Vial : 16 Sample Multiplier: 1

Instrument :
 ECD_S
 ClientSampleId :
 OU4-VSL-10-121224

Integration File signal 1: autoint1.e
 Integration File signal 2: autoint2.e
 Quant Time: Dec 24 01:55:59 2024
 Quant Method : Z:\pestpcbsrv\HPCHEM1\ECD_S\Method\PS122324.M
 Quant Title : 8080.M
 QLast Update : Mon Dec 23 13:44:25 2024
 Response via : Initial Calibration
 Integrator: ChemStation

Volume Inj. : 1 µl
 Signal #1 Phase : ZB-MR1 Signal #2 Phase: ZB-MR2
 Signal #1 Info : 30M x 0.32mm x0.5 Signal #2 Info : 30M x 0.32mm x 0.25µm

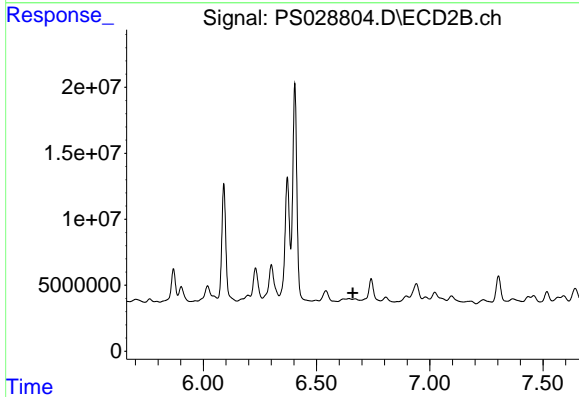




#2 3,5-DICHLORO BENZOIC ACID

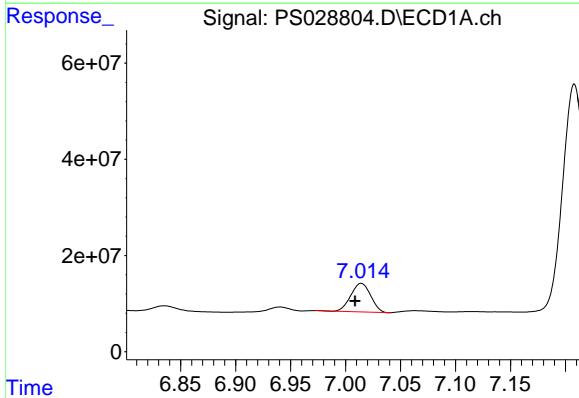
R.T.: 6.367 min
 Delta R.T.: -0.018 min
 Response: 5302236
 Conc: 1.61 ng/ml

Instrument :
 ECD_S
 ClientSampleId :
 OU4-VSL-10-121224



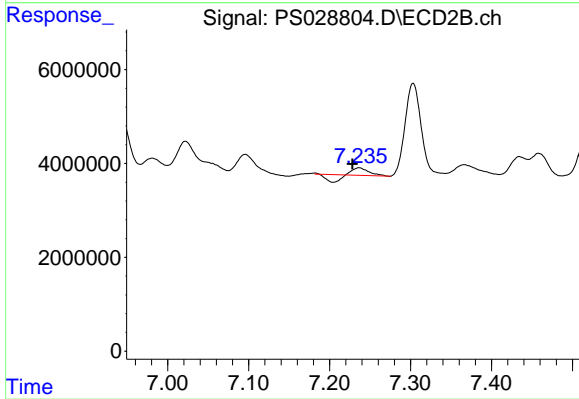
#2 3,5-DICHLORO BENZOIC ACID

R.T.: 0.000 min
 Exp R.T. : 6.661 min
 Response: 0
 Conc: N.D.



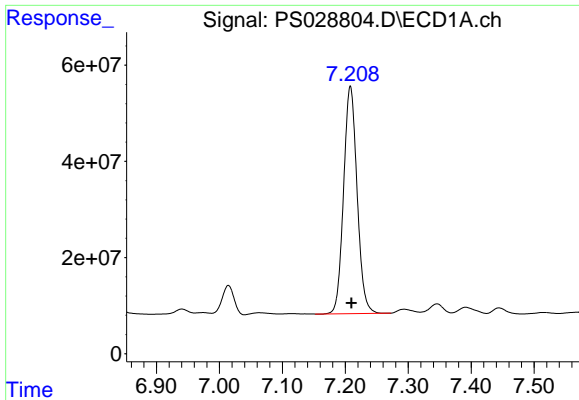
#3 4-Nitrophenol

R.T.: 7.014 min
 Delta R.T.: 0.006 min
 Response: 74210663
 Conc: 49.41 ng/ml



#3 4-Nitrophenol

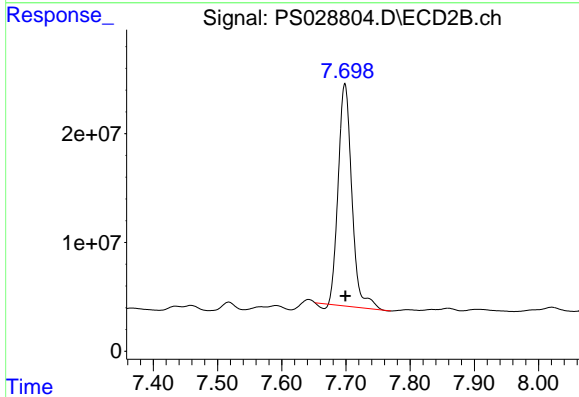
R.T.: 7.236 min
 Delta R.T.: 0.008 min
 Response: 842770
 Conc: 1.01 ng/ml



#4 2,4-DCAA

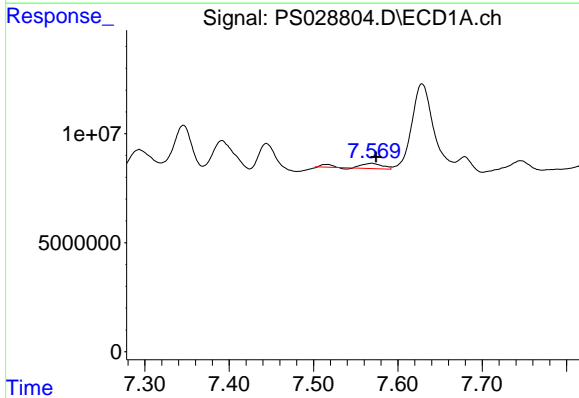
R.T.: 7.208 min
 Delta R.T.: -0.002 min
 Response: 703832292
 Conc: 311.15 ng/ml

Instrument :
 ECD_S
 ClientSampleId :
 OU4-VSL-10-121224



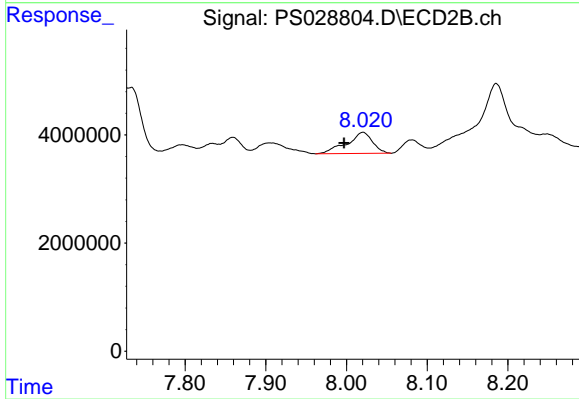
#4 2,4-DCAA

R.T.: 7.698 min
 Delta R.T.: -0.001 min
 Response: 299589055
 Conc: 266.17 ng/ml



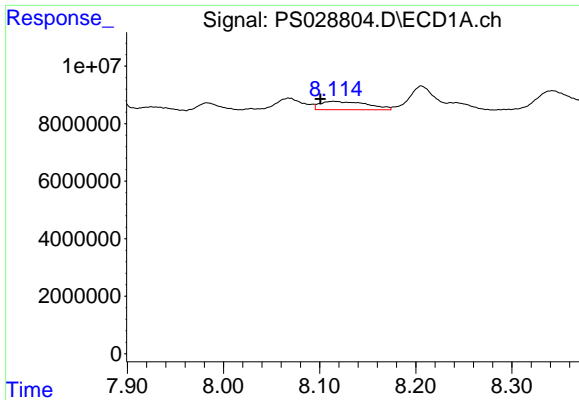
#6 MCP

R.T.: 7.569 min
 Delta R.T.: -0.005 min
 Response: 4434059
 Conc: N.D.



#6 MCP

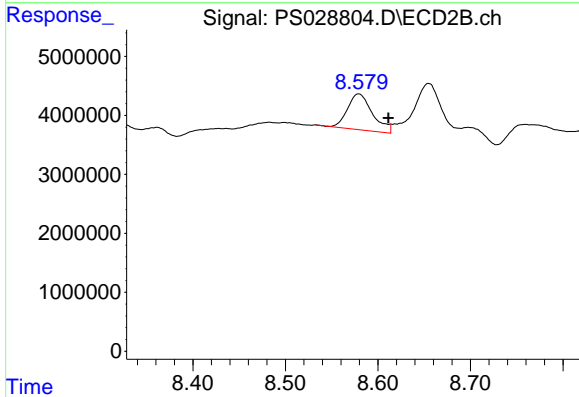
R.T.: 8.020 min
 Delta R.T.: 0.023 min
 Response: 8586074
 Conc: 2.63 ug/ml



#8 DICHLORPROP

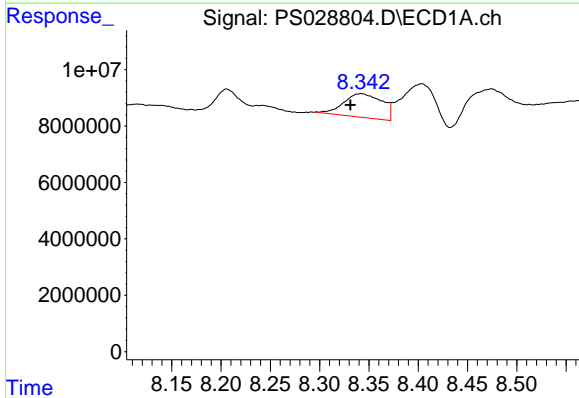
R.T.: 8.115 min
 Delta R.T.: 0.014 min
 Response: 9815158
 Conc: 3.70 ng/ml

Instrument :
 ECD_S
 ClientSampleId :
 OU4-VSL-10-121224



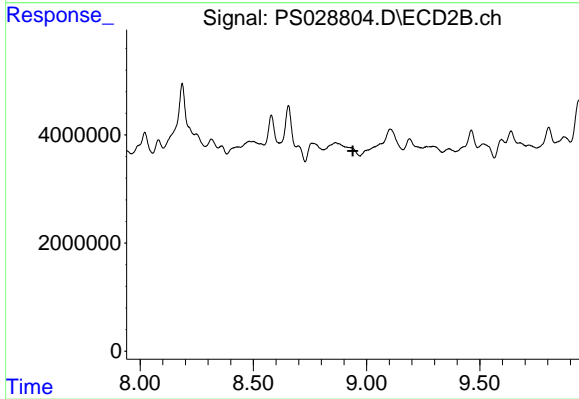
#8 DICHLORPROP

R.T.: 8.579 min
 Delta R.T.: -0.032 min
 Response: 11398429
 Conc: 8.26 ng/ml



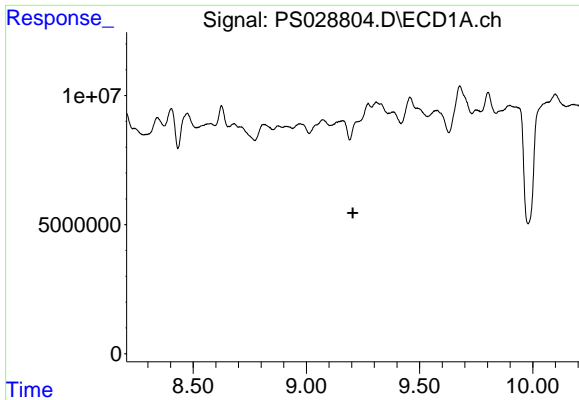
#9 2,4-D

R.T.: 8.342 min
 Delta R.T.: 0.011 min
 Response: 22892320
 Conc: 8.03 ng/ml



#9 2,4-D

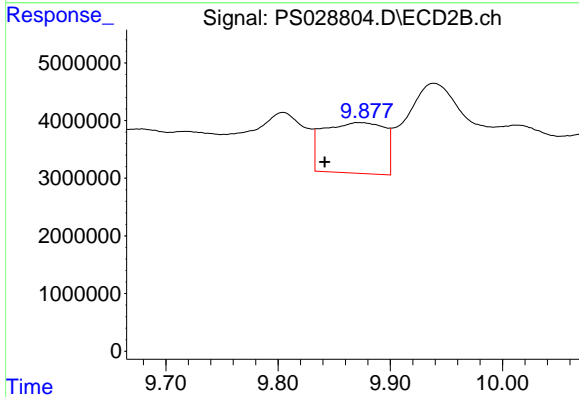
R.T.: 0.000 min
 Exp R.T.: 8.939 min
 Response: 0
 Conc: N.D.



#11 2,4,5-TP (SILVEX)

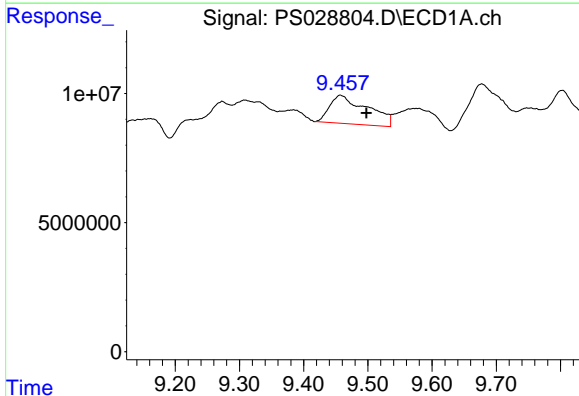
R.T.: 0.000 min
 Exp R.T.: 9.205 min
 Response: 0
 Conc: N.D.

Instrument :
 ECD_S
 ClientSampleId :
 OU4-VSL-10-121224



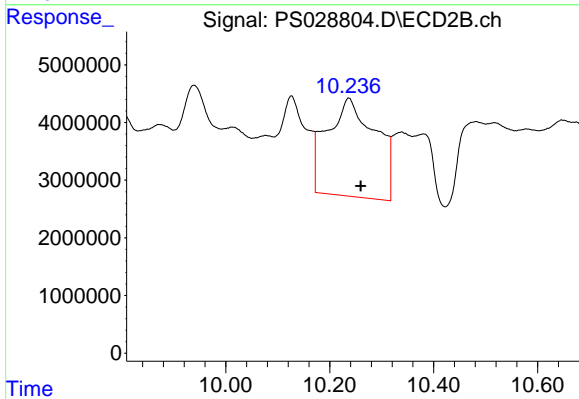
#11 2,4,5-TP (SILVEX)

R.T.: 9.873 min
 Delta R.T.: 0.031 min
 Response: 33145572
 Conc: 3.69 ng/ml



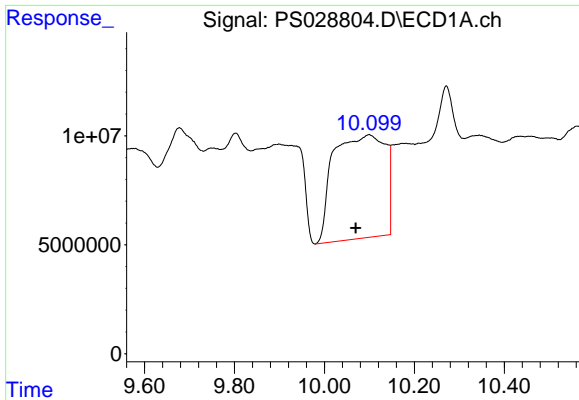
#12 2,4,5-T

R.T.: 9.458 min
 Delta R.T.: -0.040 min
 Response: 45234828
 Conc: 2.78 ng/ml



#12 2,4,5-T

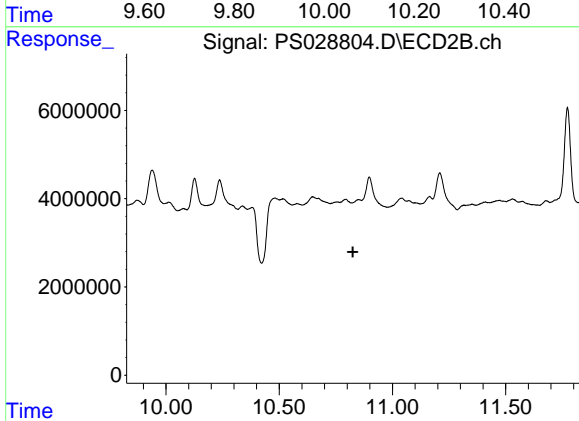
R.T.: 10.237 min
 Delta R.T.: -0.023 min
 Response: 109939192
 Conc: 12.62 ng/ml



#13 2,4-DB

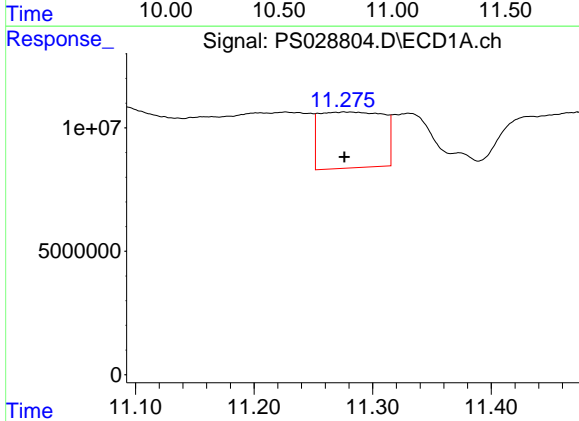
R.T.: 10.099 min
 Delta R.T.: 0.030 min
 Response: 379987762
 Conc: 121.73 ng/ml

Instrument :
 ECD_S
 ClientSampleId :
 OU4-VSL-10-121224



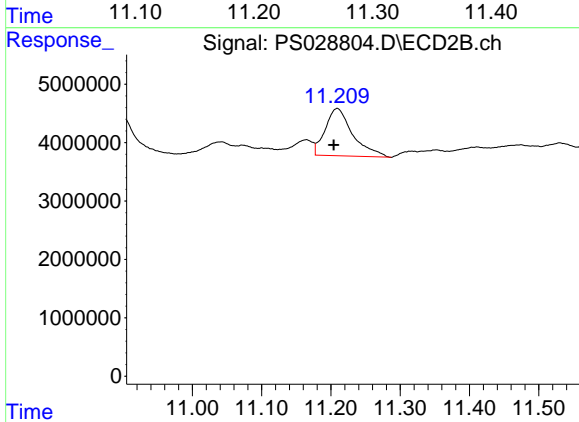
#13 2,4-DB

R.T.: 0.000 min
 Exp R.T. : 10.826 min
 Response: 0
 Conc: N.D.



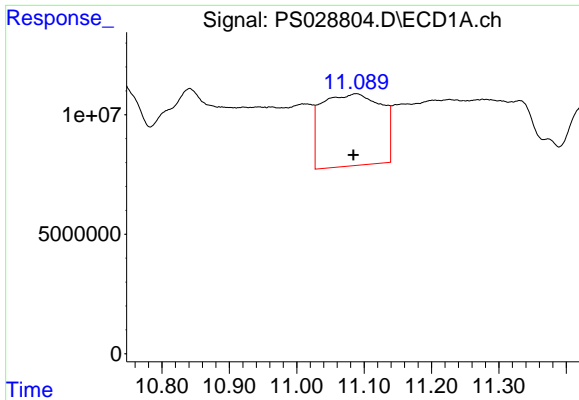
#14 DINOSEB

R.T.: 11.278 min
 Delta R.T.: 0.002 min
 Response: 84806295
 Conc: 6.31 ng/ml



#14 DINOSEB

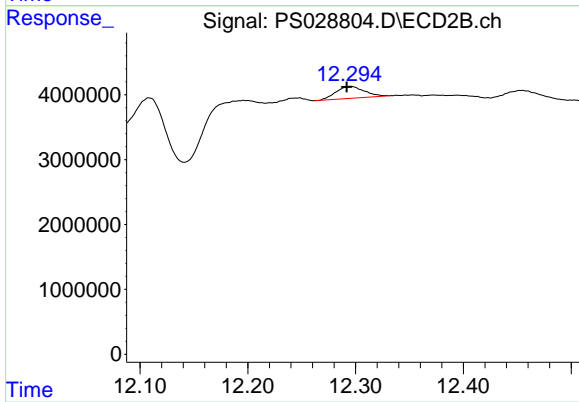
R.T.: 11.209 min
 Delta R.T.: 0.005 min
 Response: 22353620
 Conc: 3.63 ng/ml



#15 Picloram

R.T.: 11.088 min
Delta R.T.: 0.004 min
Response: 185842048
Conc: 6.93 ng/ml

Instrument :
ECD_S
ClientSampleId :
OU4-VSL-10-121224



#15 Picloram

R.T.: 12.295 min
Delta R.T.: 0.003 min
Response: 3349484
Conc: N.D.