

Data Path : Z:\pestpcbsrv\HPCHEM1\ECD_S\Data\PS122324\
 Data File : PS028805.D
 Signal(s) : Signal #1: ECD1A.ch Signal #2: ECD2B.ch
 Acq On : 23 Dec 2024 18:33
 Operator : AR\AJ
 Sample : P5306-09
 Misc :
 ALS Vial : 17 Sample Multiplier: 1

Instrument :
 ECD_S
 ClientSampleId :
 OU4-VSL-11-121224

Integration File signal 1: autoint1.e
 Integration File signal 2: autoint2.e
 Quant Time: Dec 24 01:56:15 2024
 Quant Method : Z:\pestpcbsrv\HPCHEM1\ECD_S\Method\PS122324.M
 Quant Title : 8080.M
 QLast Update : Mon Dec 23 13:44:25 2024
 Response via : Initial Calibration
 Integrator: ChemStation

Volume Inj. : 1 µl
 Signal #1 Phase : ZB-MR1 Signal #2 Phase: ZB-MR2
 Signal #1 Info : 30M x 0.32mm x0.5 Signal #2 Info : 30M x 0.32mm x 0.25µm

Compound	RT#1	RT#2	Resp#1	Resp#2	ng/ml	ng/ml

System Monitoring Compounds						
4) S 2,4-DCAA	7.206	7.695	891.1E6	377.6E6	393.938	335.510
Target Compounds						
2) T 3,5-DICHL...	6.367	0.000	5623295	0	1.707	N.D. #
3) T 4-Nitroph...	7.013	7.255f	66715756	-1878871	44.416	N.D. #
6) T MCPP	7.565	8.017	3607762	7454821	<MDL	2.281 #
7) T MCPA	7.744	0.000	14632419	0	1.669	N.D. #
8) T DICHLORPROP	8.108	8.576f	13703829	15201720	5.165	11.018 #
9) T 2,4-D	8.336	0.000	36388543	0	12.770	N.D. #
10) T Pentachlo...	8.621	9.460	4375536	11964569	<MDL	<MDL #
11) T 2,4,5-TP ...	9.225	9.866	-12700190	34223510	N.D.	3.810
12) T 2,4,5-T	9.536f	10.281	38083264	80461066	2.341	9.239 #
13) T 2,4-DB	10.095f	0.000	418.1E6	0	133.924	N.D. #
14) T DINOSEB	11.263	11.207	161.0E6	29796577	11.981	4.838 #
15) T Picloram	11.085	12.290	251.3E6	3877383	9.372	<MDL #
16) T DCPA	0.000	12.290f	0	3877383	N.D.	<MDL

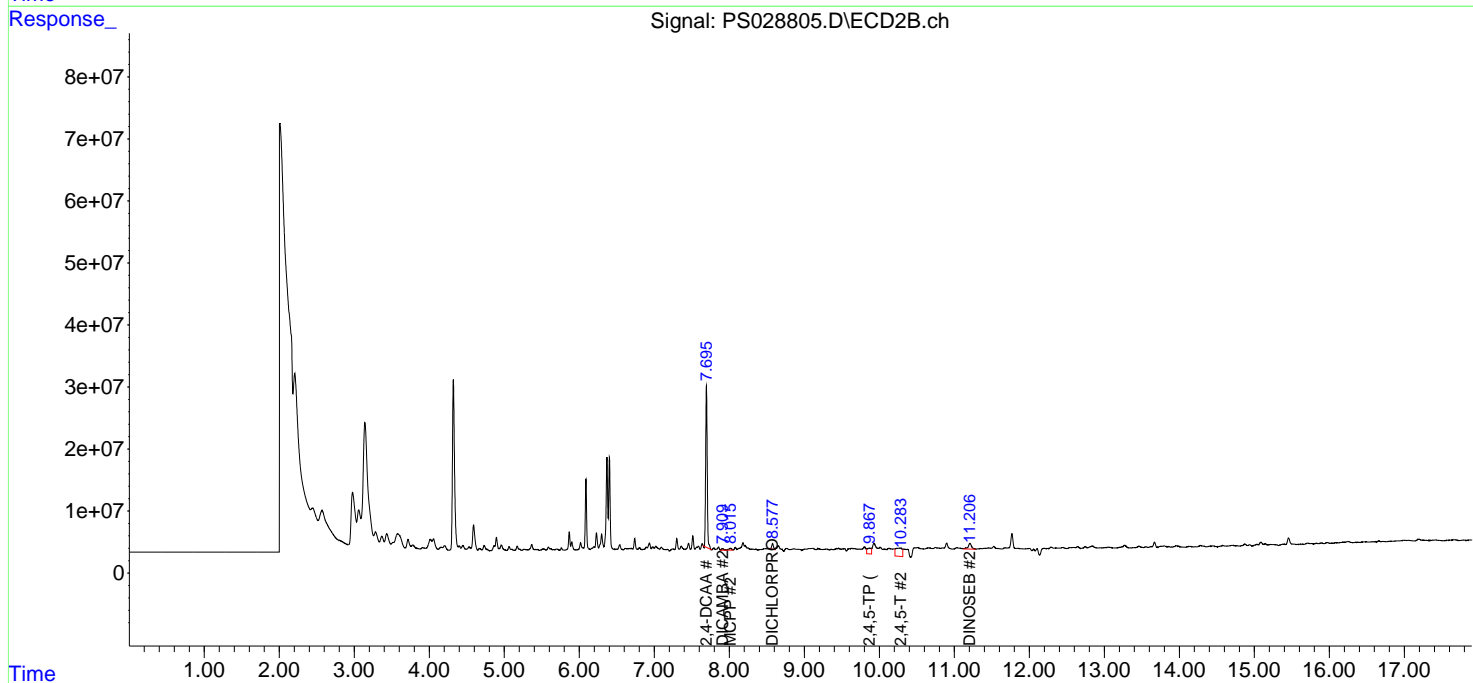
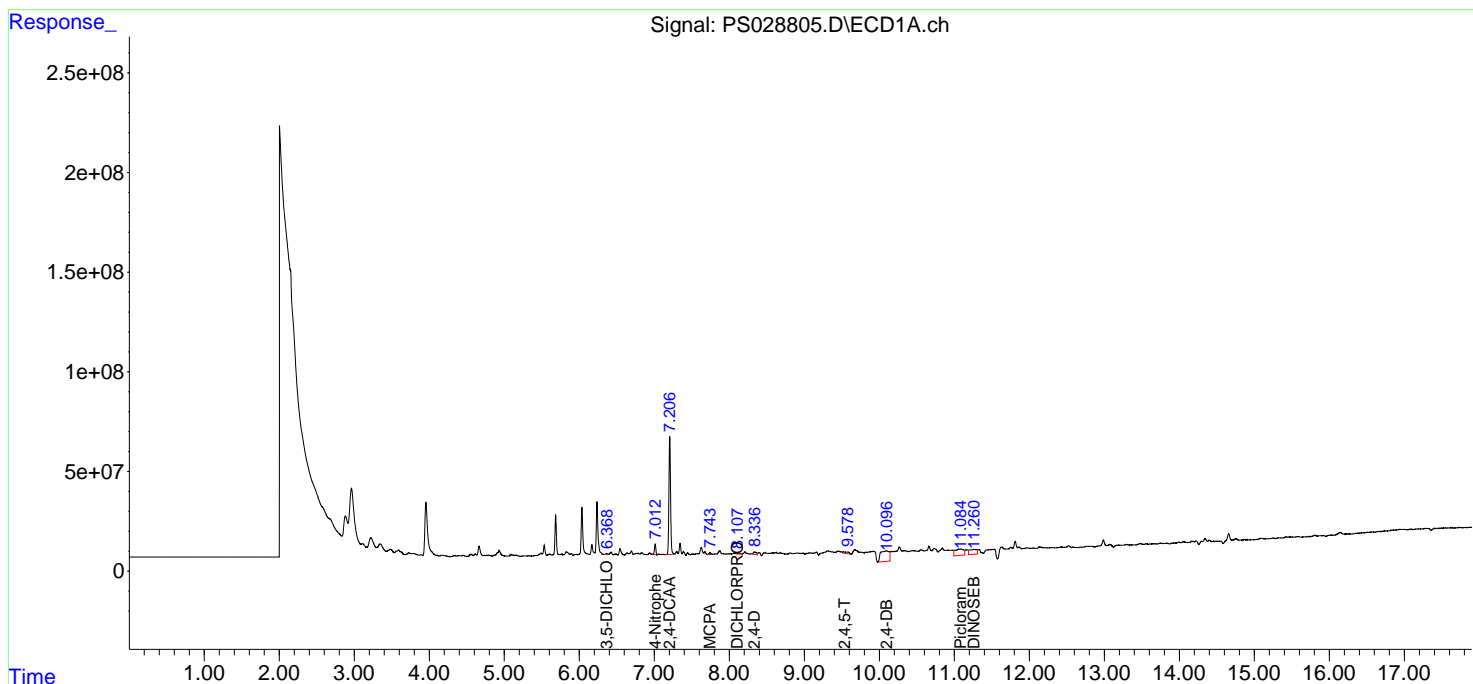
(f)=RT Delta > 1/2 Window (#)=Amounts differ by > 25% (m)=manual int.

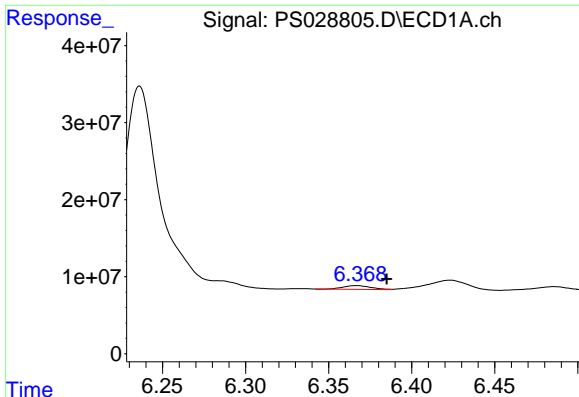
Data Path : Z:\pestpcbsrv\HPCHEM1\ECD_S\Data\PS122324\
 Data File : PS028805.D
 Signal(s) : Signal #1: ECD1A.ch Signal #2: ECD2B.ch
 Acq On : 23 Dec 2024 18:33
 Operator : AR\AJ
 Sample : P5306-09
 Misc :
 ALS Vial : 17 Sample Multiplier: 1

Instrument :
 ECD_S
 ClientSampleId :
 OU4-VSL-11-121224

Integration File signal 1: autoint1.e
 Integration File signal 2: autoint2.e
 Quant Time: Dec 24 01:56:15 2024
 Quant Method : Z:\pestpcbsrv\HPCHEM1\ECD_S\Method\PS122324.M
 Quant Title : 8080.M
 QLast Update : Mon Dec 23 13:44:25 2024
 Response via : Initial Calibration
 Integrator: ChemStation

Volume Inj. : 1 µl
 Signal #1 Phase : ZB-MR1 Signal #2 Phase: ZB-MR2
 Signal #1 Info : 30M x 0.32mm x 0.5 Signal #2 Info : 30M x 0.32mm x 0.25µm

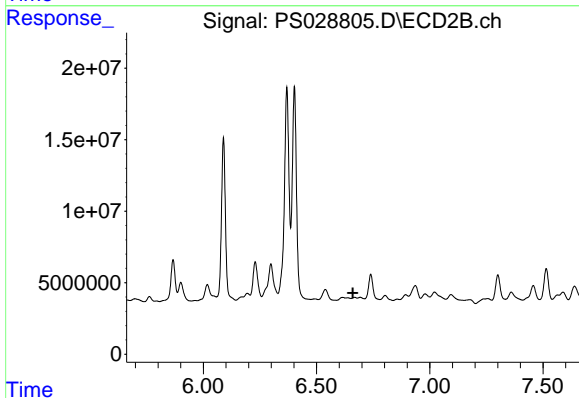




#2 3,5-DICHLORO BENZOIC ACID

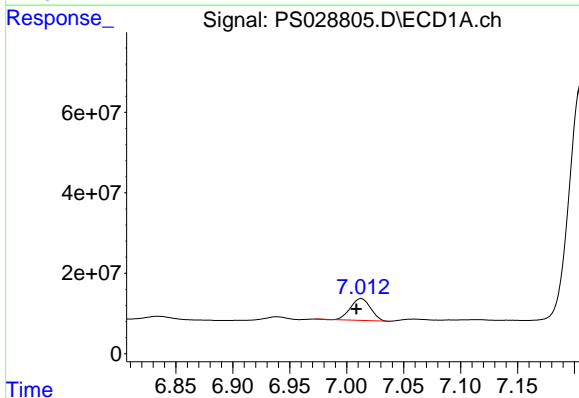
R.T.: 6.367 min
 Delta R.T.: -0.018 min
 Response: 5623295
 Conc: 1.71 ng/ml

Instrument :
 ECD_S
 ClientSampleId :
 OU4-VSL-11-121224



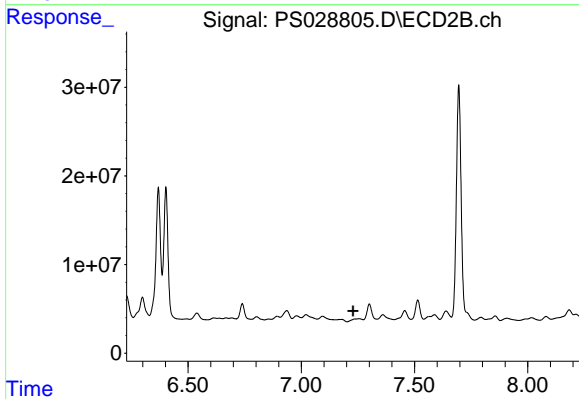
#2 3,5-DICHLORO BENZOIC ACID

R.T.: 0.000 min
 Exp R.T. : 6.661 min
 Response: 0
 Conc: N.D.



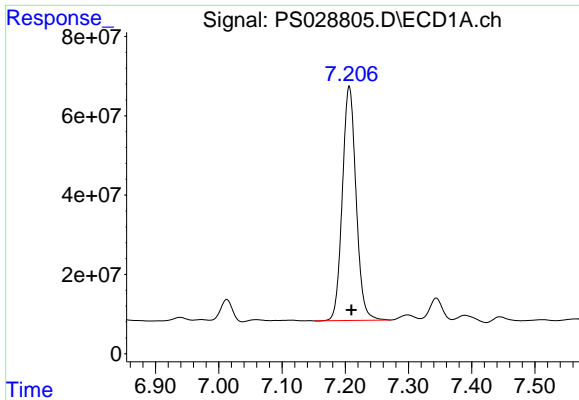
#3 4-Nitrophenol

R.T.: 7.013 min
 Delta R.T.: 0.004 min
 Response: 66715756
 Conc: 44.42 ng/ml



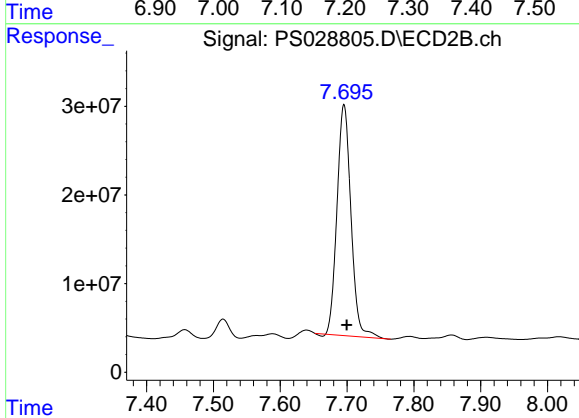
#3 4-Nitrophenol

R.T.: 7.255 min
 Delta R.T.: 0.027 min
 Response: -1878871
 Conc: N.D.

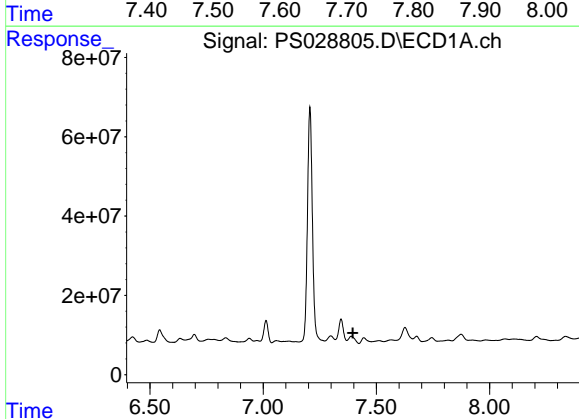


#4 2,4-DCAA
 R.T.: 7.206 min
 Delta R.T.: -0.003 min
 Response: 891096840
 Conc: 393.94 ng/ml

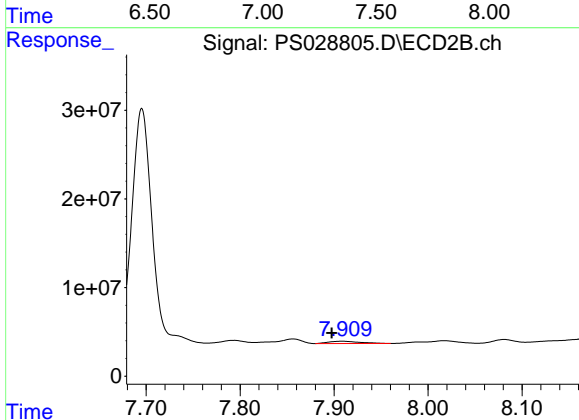
Instrument :
 ECD_S
 ClientSampleId :
 OU4-VSL-11-121224



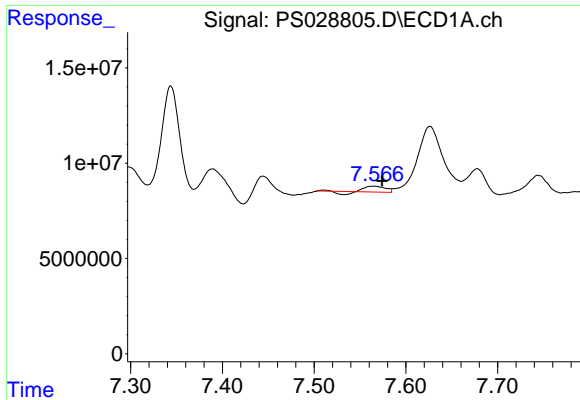
#4 2,4-DCAA
 R.T.: 7.695 min
 Delta R.T.: -0.004 min
 Response: 377629181
 Conc: 335.51 ng/ml



#5 DICAMBA
 R.T.: 7.389 min
 Delta R.T.: -0.007 min
 Response: -35202142
 Conc: N.D.



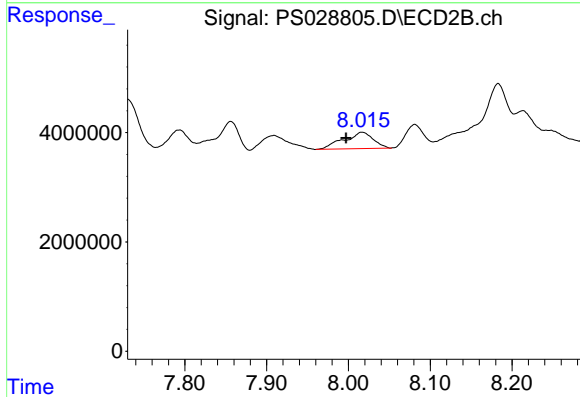
#5 DICAMBA
 R.T.: 7.908 min
 Delta R.T.: 0.011 min
 Response: 6011359
 Conc: 1.09 ng/ml



#6 MCPP

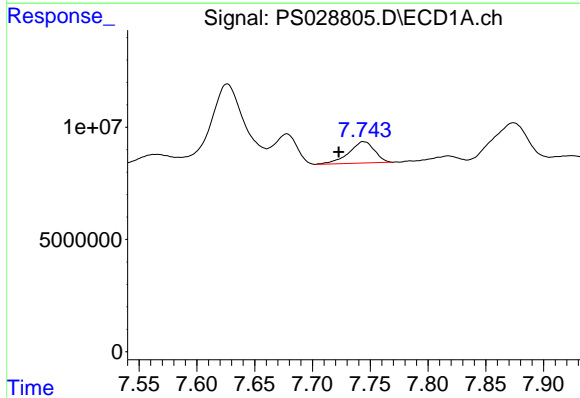
R.T.: 7.565 min
 Delta R.T.: -0.009 min
 Response: 3607762
 Conc: N.D.

Instrument :
 ECD_S
 ClientSampleId :
 OU4-VSL-11-121224



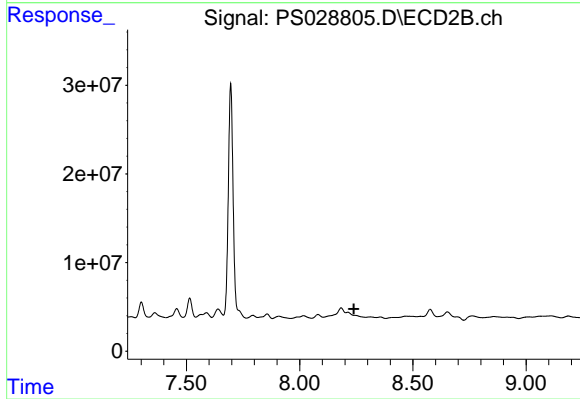
#6 MCPP

R.T.: 8.017 min
 Delta R.T.: 0.020 min
 Response: 7454821
 Conc: 2.28 ug/ml



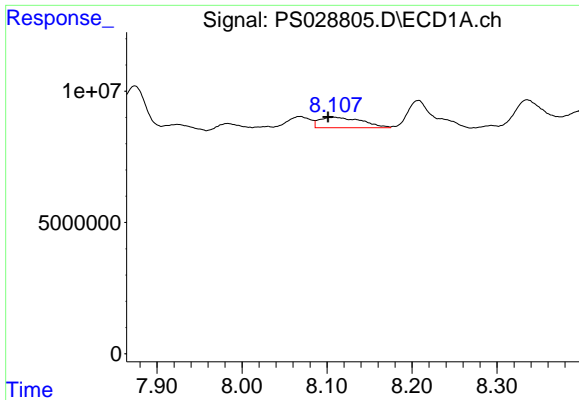
#7 MCPA

R.T.: 7.744 min
 Delta R.T.: 0.022 min
 Response: 14632419
 Conc: 1.67 ug/ml



#7 MCPA

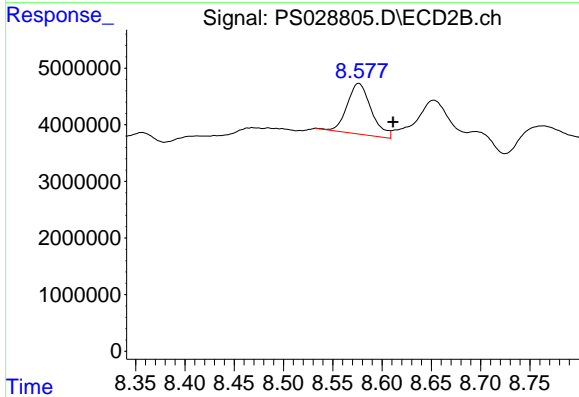
R.T.: 0.000 min
 Exp R.T. : 8.239 min
 Response: 0
 Conc: N.D.



#8 DICHLORPROP

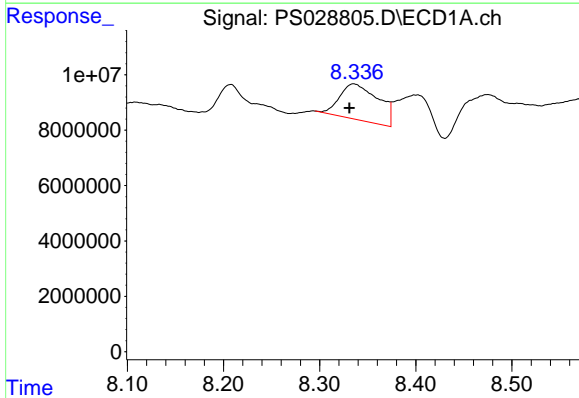
R.T.: 8.108 min
 Delta R.T.: 0.007 min
 Response: 13703829
 Conc: 5.17 ng/ml

Instrument :
 ECD_S
 ClientSampleId :
 OU4-VSL-11-121224



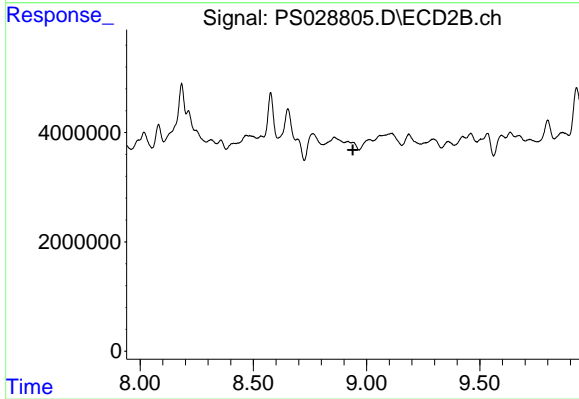
#8 DICHLORPROP

R.T.: 8.576 min
 Delta R.T.: -0.035 min
 Response: 15201720
 Conc: 11.02 ng/ml



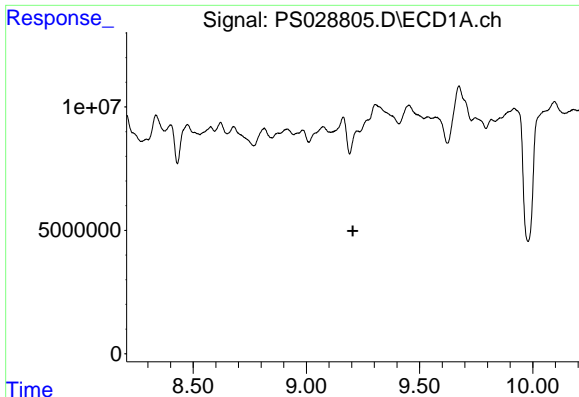
#9 2,4-D

R.T.: 8.336 min
 Delta R.T.: 0.005 min
 Response: 36388543
 Conc: 12.77 ng/ml



#9 2,4-D

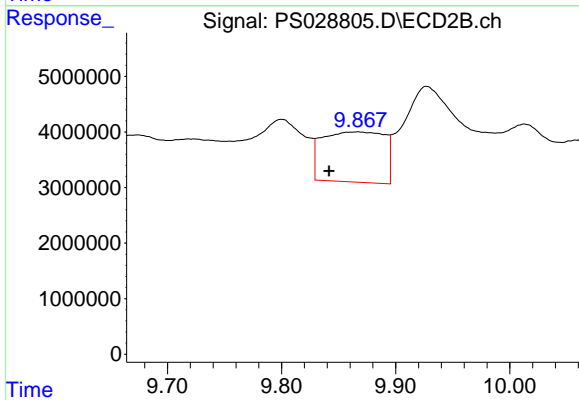
R.T.: 0.000 min
 Exp R.T.: 8.939 min
 Response: 0
 Conc: N.D.



#11 2,4,5-TP (SILVEX)

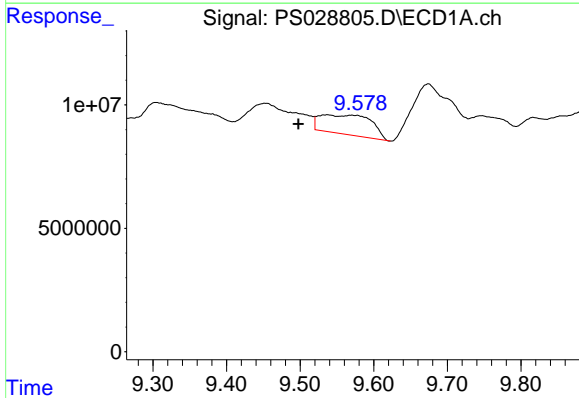
R.T.: 9.225 min
 Delta R.T.: 0.020 min
 Response: -12700190
 Conc: N.D.

Instrument :
 ECD_S
 ClientSampleId :
 OU4-VSL-11-121224



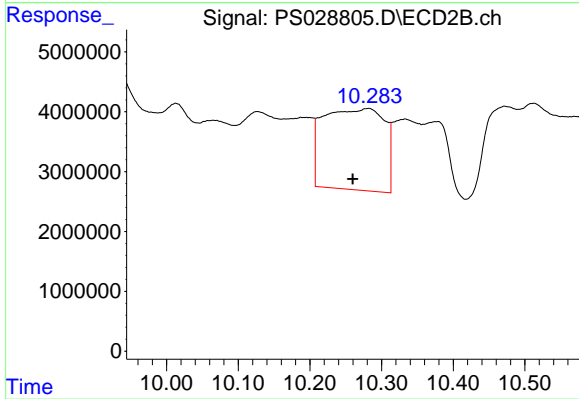
#11 2,4,5-TP (SILVEX)

R.T.: 9.866 min
 Delta R.T.: 0.024 min
 Response: 34223510
 Conc: 3.81 ng/ml



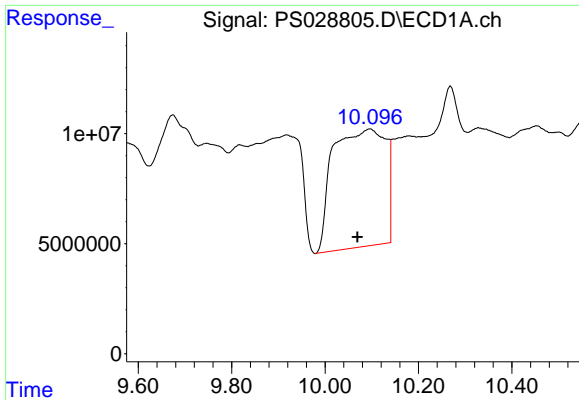
#12 2,4,5-T

R.T.: 9.536 min
 Delta R.T.: 0.038 min
 Response: 38083264
 Conc: 2.34 ng/ml



#12 2,4,5-T

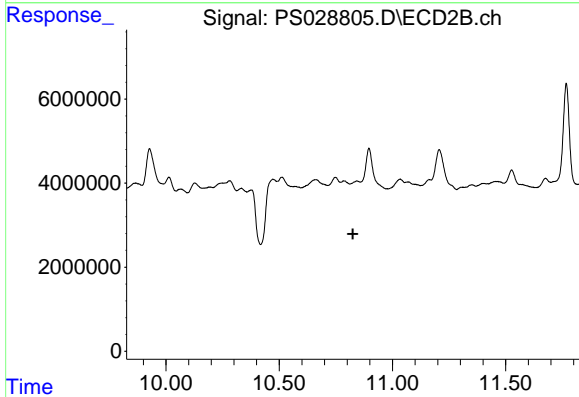
R.T.: 10.281 min
 Delta R.T.: 0.021 min
 Response: 80461066
 Conc: 9.24 ng/ml



#13 2,4-DB

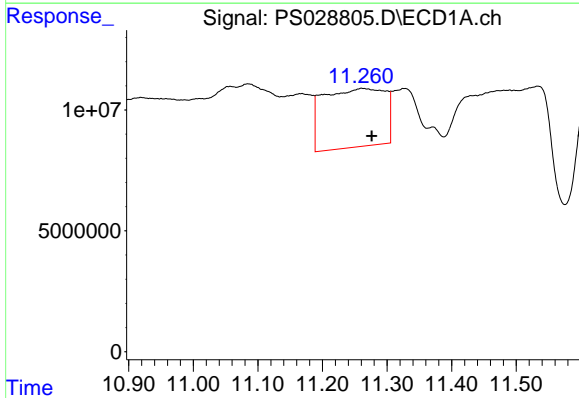
R.T.: 10.095 min
 Delta R.T.: 0.026 min
 Response: 418057413
 Conc: 133.92 ng/ml

Instrument :
 ECD_S
 ClientSampleId :
 OU4-VSL-11-121224



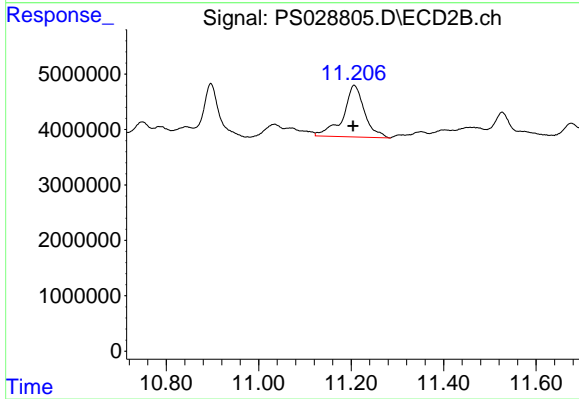
#13 2,4-DB

R.T.: 0.000 min
 Exp R.T. : 10.826 min
 Response: 0
 Conc: N.D.



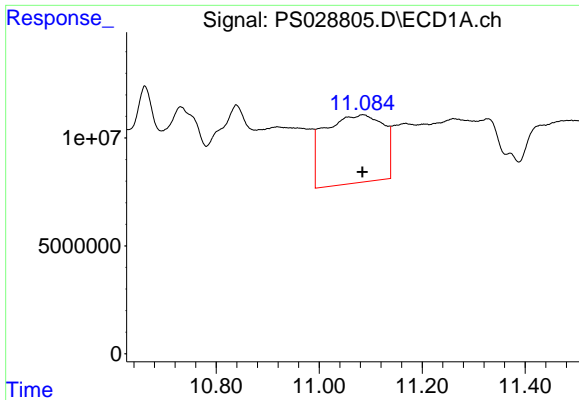
#14 DINOSEB

R.T.: 11.263 min
 Delta R.T.: -0.013 min
 Response: 161039404
 Conc: 11.98 ng/ml



#14 DINOSEB

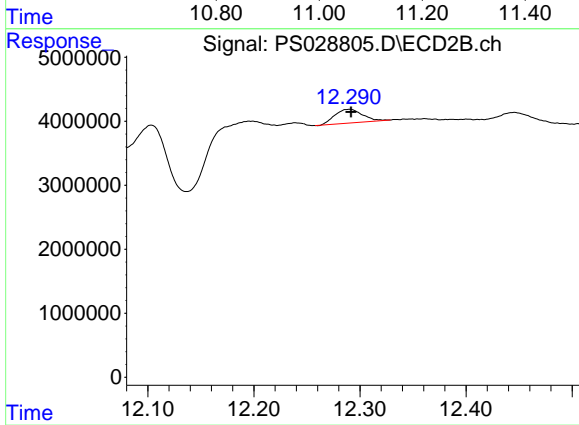
R.T.: 11.207 min
 Delta R.T.: 0.003 min
 Response: 29796577
 Conc: 4.84 ng/ml



#15 Picloram

R.T.: 11.085 min
Delta R.T.: 0.000 min
Response: 251275939
Conc: 9.37 ng/ml

Instrument :
ECD_S
ClientSampleId :
OU4-VSL-11-121224



#15 Picloram

R.T.: 12.290 min
Delta R.T.: -0.002 min
Response: 3877383
Conc: N.D.