

Data Path : Z:\pestpcbsrv\HPCHEM1\ECD_S\Data\PS122624\
 Data File : PS028822.D
 Signal(s) : Signal #1: ECD1A.ch Signal #2: ECD2B.ch
 Acq On : 26 Dec 2024 17:29
 Operator : AR\AJ
 Sample : P5306-15MS
 Misc :
 ALS Vial : 5 Sample Multiplier: 1

Instrument :
 ECD_S
 ClientSampleId :
 OU4-VSL-14-121224MS

Integration File signal 1: autoint1.e
 Integration File signal 2: autoint2.e
 Quant Time: Dec 27 02:42:19 2024
 Quant Method : Z:\pestpcbsrv\HPCHEM1\ECD_S\Method\PS122324.M
 Quant Title : 8080.M
 QLast Update : Mon Dec 23 13:44:25 2024
 Response via : Initial Calibration
 Integrator: ChemStation

Volume Inj. : 1 µl
 Signal #1 Phase : ZB-MR2 Signal #2 Phase: ZB-MR2
 Signal #1 Info : 30M x 0.32mm x0.5 Signal #2 Info : 30M x 0.32mm x 0.25µm

Compound	RT#1	RT#2	Resp#1	Resp#2	ng/ml	ng/ml

System Monitoring Compounds						
4) S 2,4-DCAA	7.206	7.695	1145.7E6	465.9E6	506.491	413.942
Target Compounds						
1) T Dalapon	2.620	2.675	807.9E6	1111.3E6	286.819	564.514 #
2) T 3,5-DICHL...	6.381	6.657	1261.5E6	512.8E6	382.828	309.372
3) T 4-Nitroph...	7.007	7.225	69003376	38867513	45.939	46.443
5) T DICAMBA	7.391	7.892	4052.3E6	2020.2E6	410.956	367.979
6) T MCPP	7.570	7.993	159.6E6	85197335	25.627	26.072
7) T MCPA	7.719	8.235	277.8E6	166.7E6	31.689	35.977
8) T DICHLORPROP	8.096	8.605	857.3E6	389.7E6	323.119	282.468
9) T 2,4-D	8.325	8.933	1303.1E6	577.0E6	457.306	399.804
10) T Pentachlo...	8.623	9.458	8952.2E6	4153.5E6	229.151	190.539
11) T 2,4,5-TP ...	9.200	9.835	4130.7E6	2118.7E6	262.946	235.845
12) T 2,4,5-T	9.491	10.253	5334.3E6	2492.2E6	327.875	286.156
13) T 2,4-DB	10.064	10.818	1094.7E6	217.4E6	350.671	223.862 #
14) T DINOSEB	11.268	11.197	987.7E6	308.6E6	73.480	50.101 #
15) T Picloram	11.077	12.283	10143.1E6	4079.7E6	378.295	317.761
16) T DCPA	11.560	12.237	9092.5E6	4937.0E6	378.049	459.491

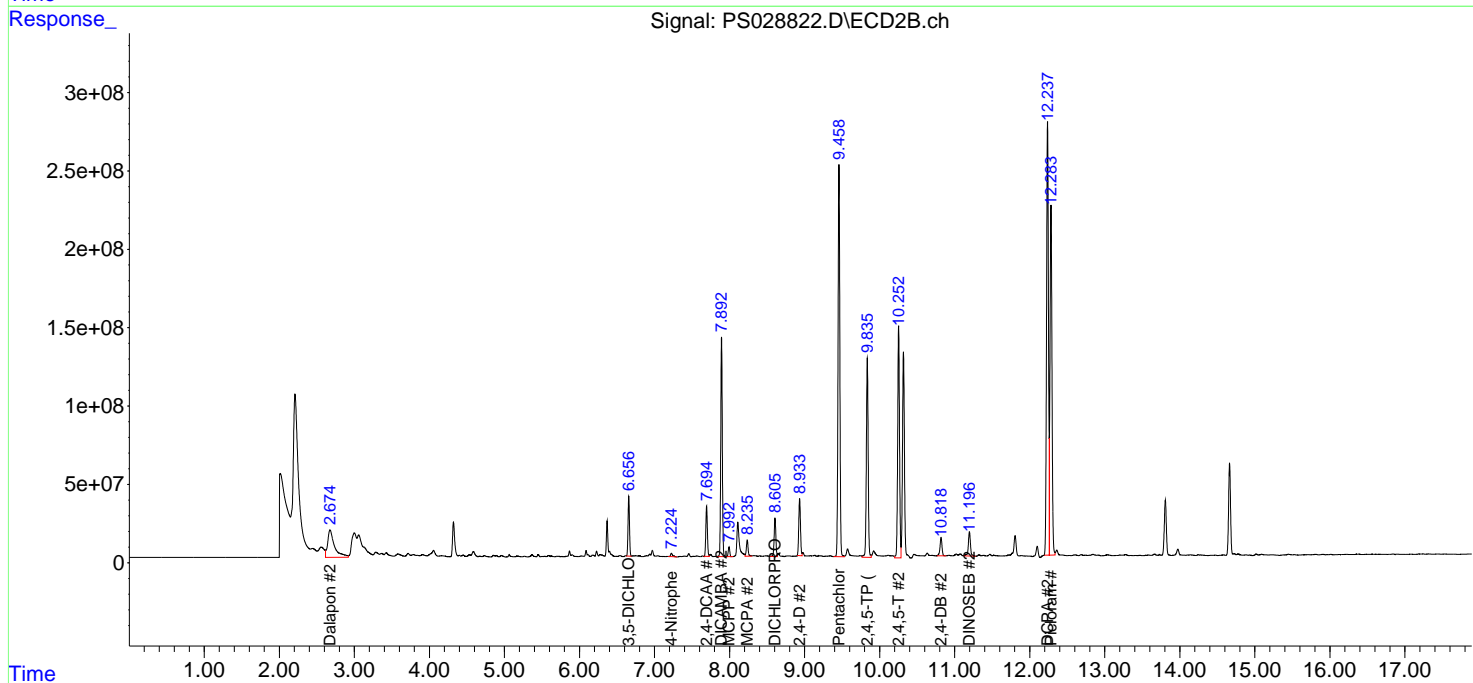
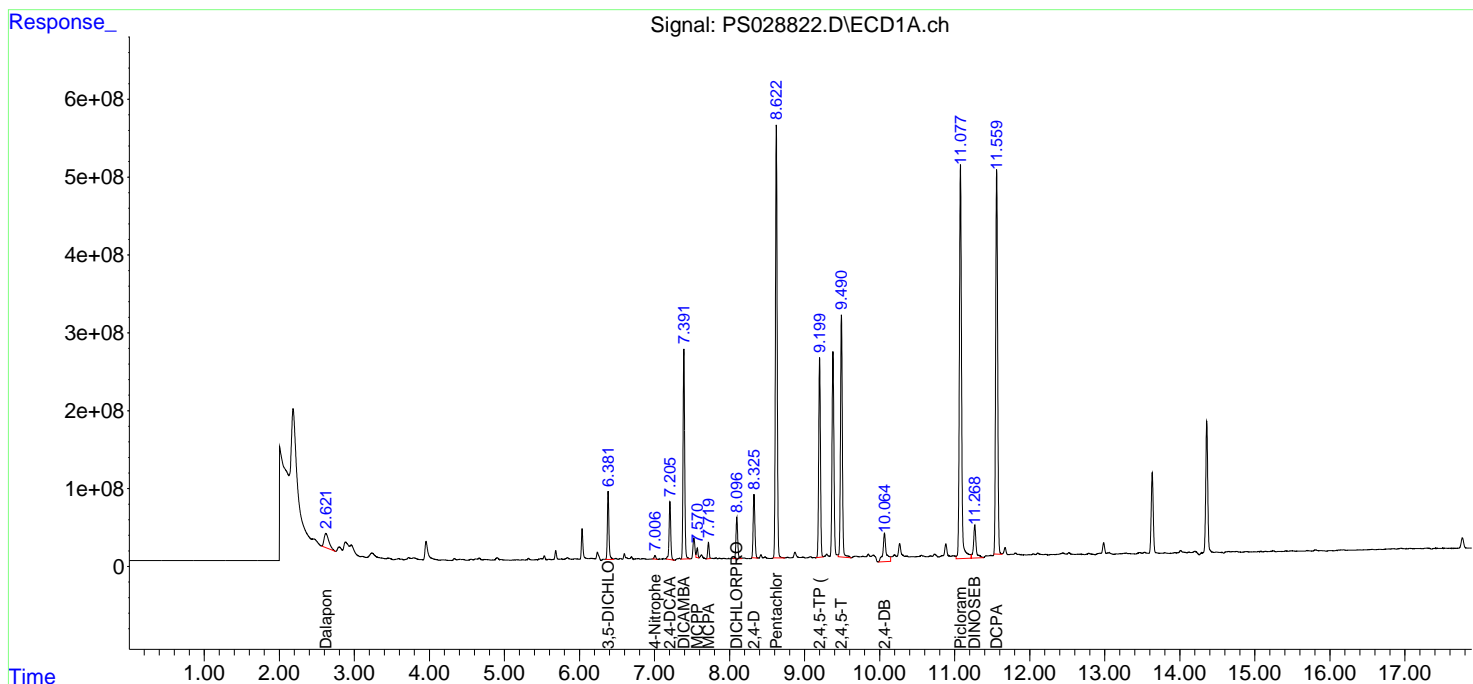
(f)=RT Delta > 1/2 Window (#)=Amounts differ by > 25% (m)=manual int.

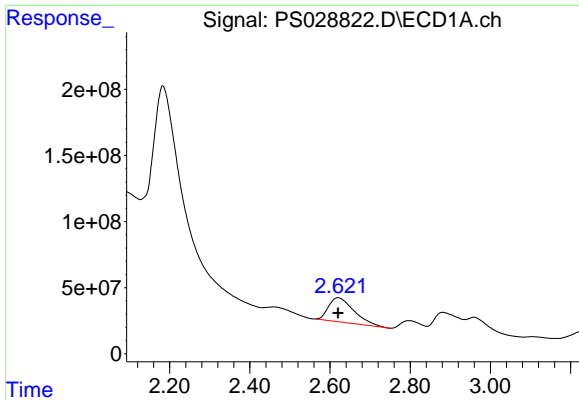
Data Path : Z:\pestpcbsrv\HPCHEM1\ECD_S\Data\PS122624\
 Data File : PS028822.D
 Signal(s) : Signal #1: ECD1A.ch Signal #2: ECD2B.ch
 Acq On : 26 Dec 2024 17:29
 Operator : AR\AJ
 Sample : P5306-15MS
 Misc :
 ALS Vial : 5 Sample Multiplier: 1

Instrument :
 ECD_S
 ClientSampleId :
 OU4-VSL-14-121224MS

Integration File signal 1: autoint1.e
 Integration File signal 2: autoint2.e
 Quant Time: Dec 27 02:42:19 2024
 Quant Method : Z:\pestpcbsrv\HPCHEM1\ECD_S\Method\PS122324.M
 Quant Title : 8080.M
 QLast Update : Mon Dec 23 13:44:25 2024
 Response via : Initial Calibration
 Integrator: ChemStation

Volume Inj. : 1 µl
 Signal #1 Phase : ZB-MR1 Signal #2 Phase: ZB-MR2
 Signal #1 Info : 30M x 0.32mm x0.5 Signal #2 Info : 30M x 0.32mm x 0.25µm

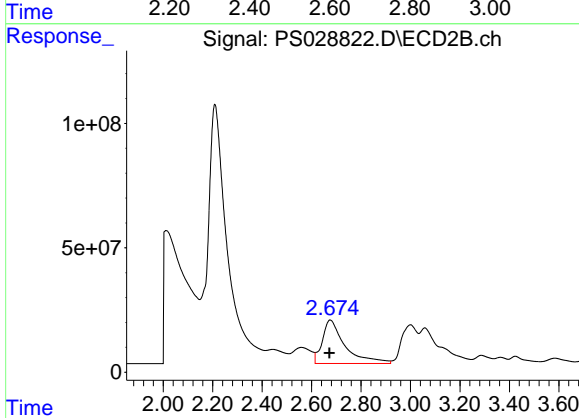




#1 Dalapon

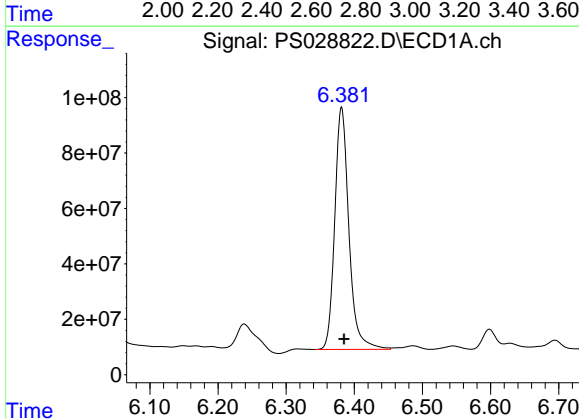
R.T.: 2.620 min
 Delta R.T.: 0.000 min
 Response: 807868514
 Conc: 286.82 ng/ml

Instrument :
 ECD_S
 ClientSampleId :
 OU4-VSL-14-121224MS



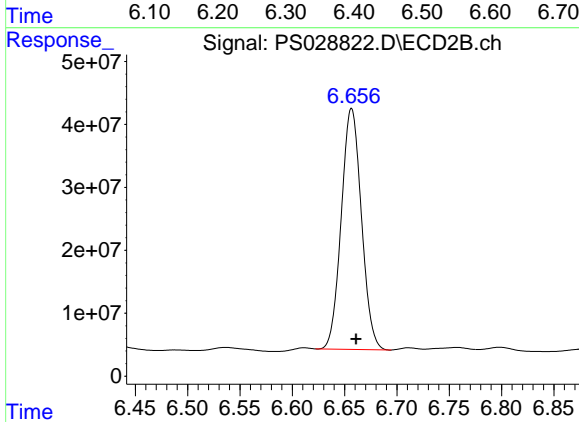
#1 Dalapon

R.T.: 2.675 min
 Delta R.T.: 0.002 min
 Response: 1111303941
 Conc: 564.51 ng/ml



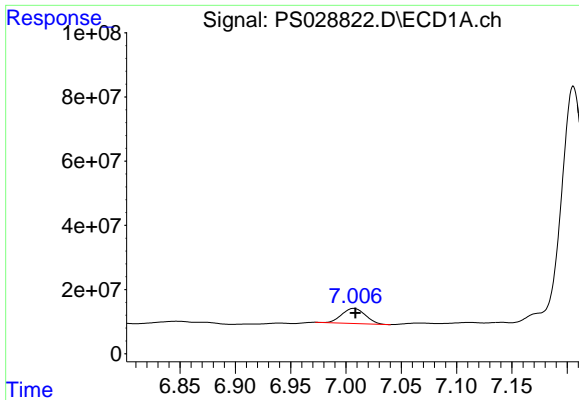
#2 3,5-DICHLOROBENZOIC ACID

R.T.: 6.381 min
 Delta R.T.: -0.004 min
 Response: 1261470680
 Conc: 382.83 ng/ml



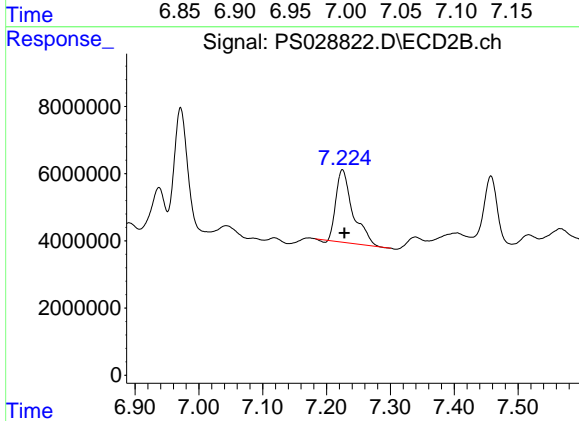
#2 3,5-DICHLOROBENZOIC ACID

R.T.: 6.657 min
 Delta R.T.: -0.004 min
 Response: 512806680
 Conc: 309.37 ng/ml

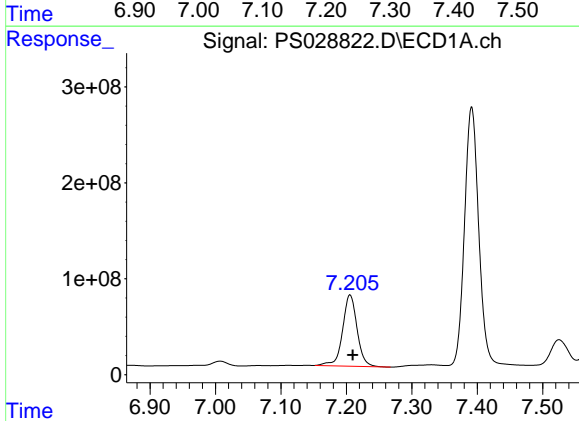


#3 4-Nitrophenol
 R.T.: 7.007 min
 Delta R.T.: -0.002 min
 Response: 69003376
 Conc: 45.94 ng/ml

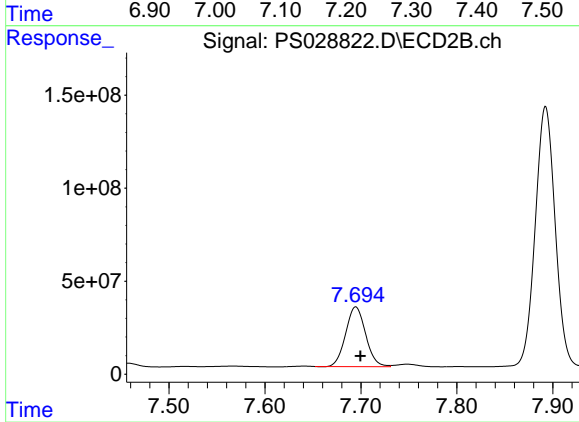
Instrument :
 ECD_S
 ClientSampleId :
 OU4-VSL-14-121224MS



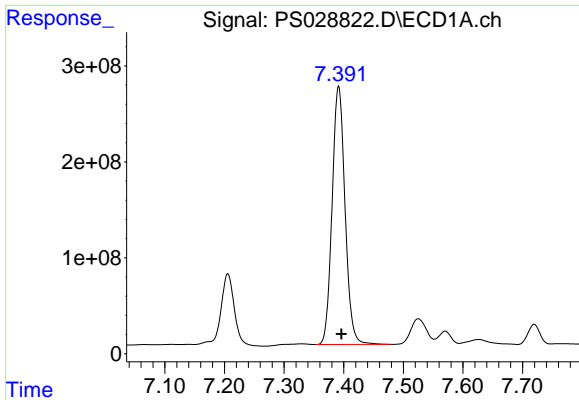
#3 4-Nitrophenol
 R.T.: 7.225 min
 Delta R.T.: -0.003 min
 Response: 38867513
 Conc: 46.44 ng/ml



#4 2,4-DCAA
 R.T.: 7.206 min
 Delta R.T.: -0.004 min
 Response: 1145696032
 Conc: 506.49 ng/ml



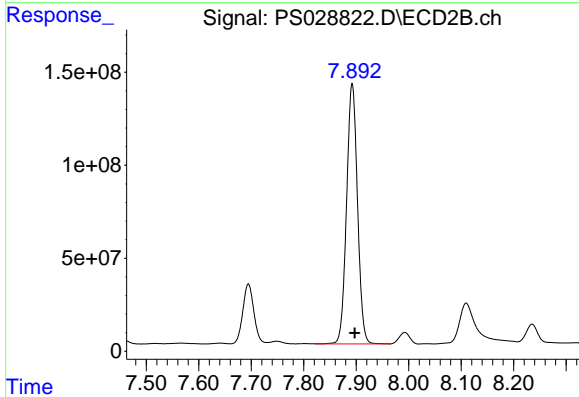
#4 2,4-DCAA
 R.T.: 7.695 min
 Delta R.T.: -0.005 min
 Response: 465907611
 Conc: 413.94 ng/ml



#5 DICAMBA

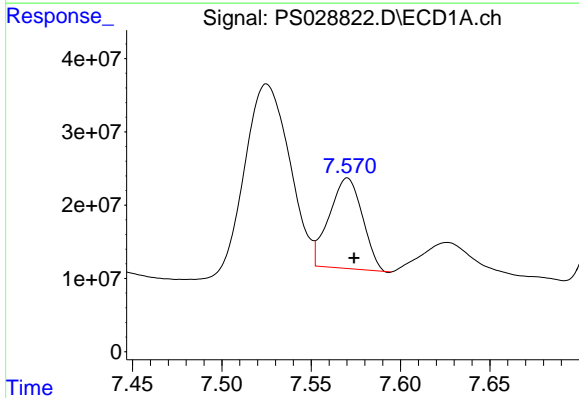
R.T.: 7.391 min
 Delta R.T.: -0.005 min
 Response: 4052291622
 Conc: 410.96 ng/ml

Instrument :
 ECD_S
 ClientSampleId :
 OU4-VSL-14-121224MS



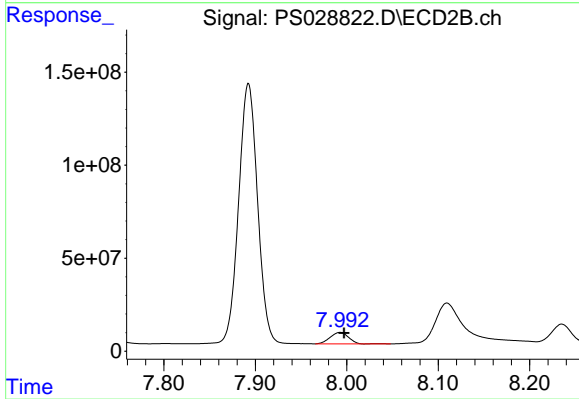
#5 DICAMBA

R.T.: 7.892 min
 Delta R.T.: -0.005 min
 Response: 2020157156
 Conc: 367.98 ng/ml



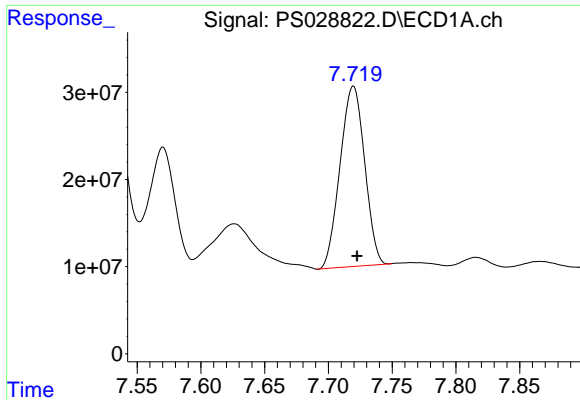
#6 MCP

R.T.: 7.570 min
 Delta R.T.: -0.004 min
 Response: 159583738
 Conc: 25.63 ug/ml



#6 MCP

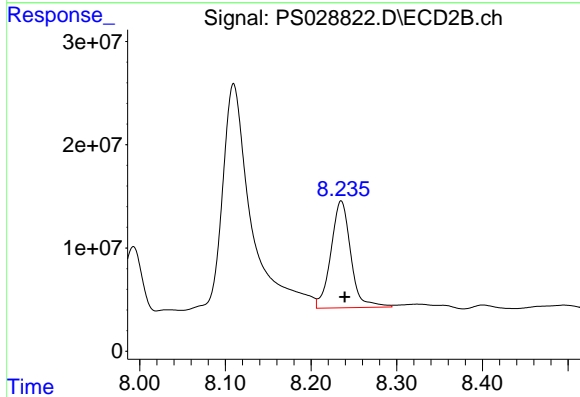
R.T.: 7.993 min
 Delta R.T.: -0.005 min
 Response: 85197335
 Conc: 26.07 ug/ml



#7 MCPA

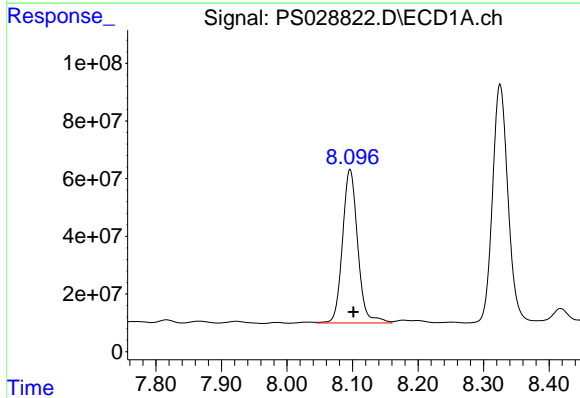
R.T.: 7.719 min
 Delta R.T.: -0.003 min
 Response: 277764389
 Conc: 31.69 ug/ml

Instrument :
 ECD_S
 ClientSampleId :
 OU4-VSL-14-121224MS



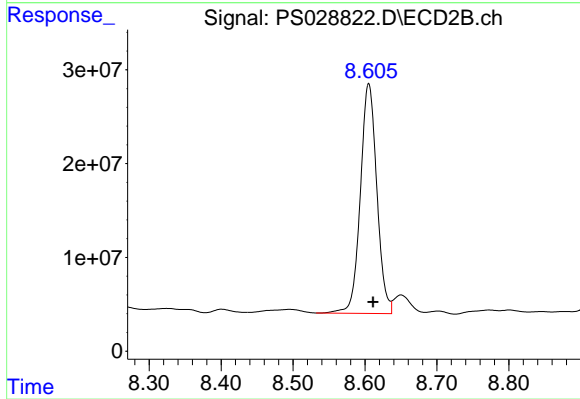
#7 MCPA

R.T.: 8.235 min
 Delta R.T.: -0.004 min
 Response: 166676489
 Conc: 35.98 ug/ml



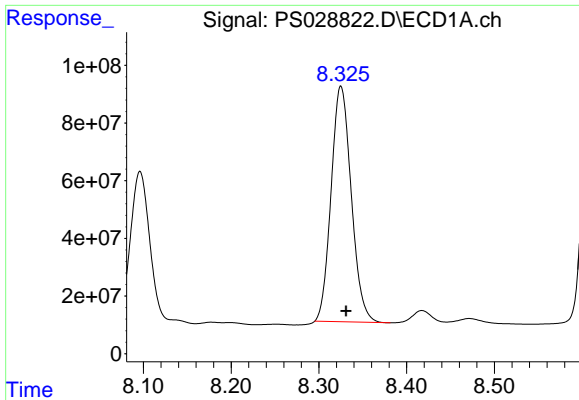
#8 DICHLORPROP

R.T.: 8.096 min
 Delta R.T.: -0.005 min
 Response: 857292966
 Conc: 323.12 ng/ml



#8 DICHLORPROP

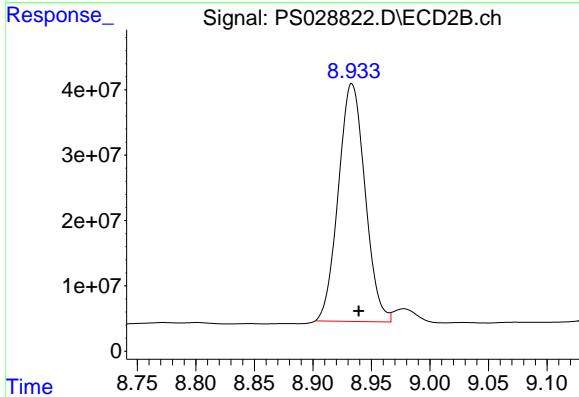
R.T.: 8.605 min
 Delta R.T.: -0.006 min
 Response: 389709638
 Conc: 282.47 ng/ml



#9 2,4-D

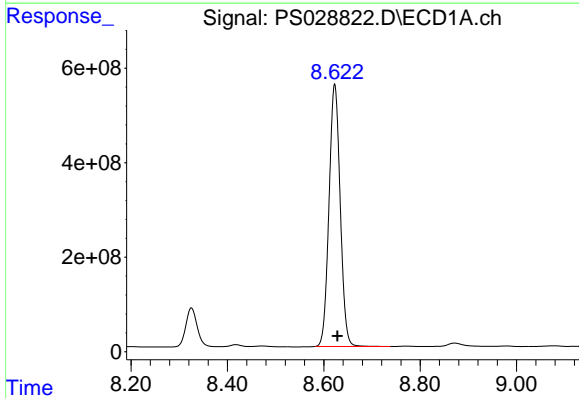
R.T.: 8.325 min
 Delta R.T.: -0.006 min
 Response: 1303109684
 Conc: 457.31 ng/ml

Instrument :
 ECD_S
 ClientSampleId :
 OU4-VSL-14-121224MS



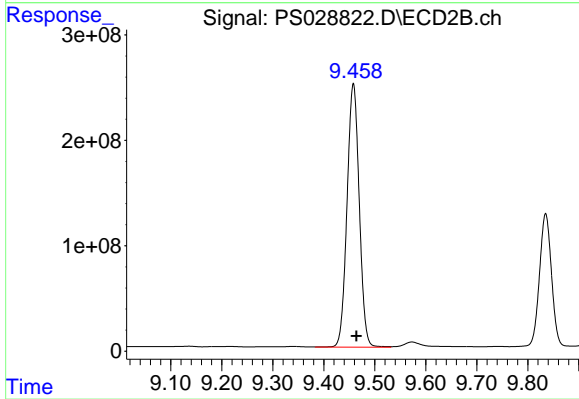
#9 2,4-D

R.T.: 8.933 min
 Delta R.T.: -0.006 min
 Response: 576975012
 Conc: 399.80 ng/ml



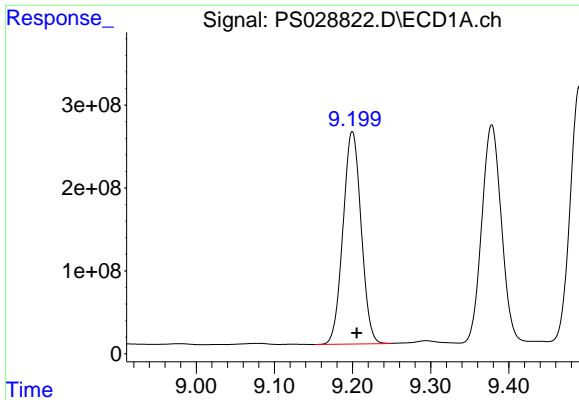
#10 Pentachlorophenol

R.T.: 8.623 min
 Delta R.T.: -0.005 min
 Response: 8952240513
 Conc: 229.15 ng/ml



#10 Pentachlorophenol

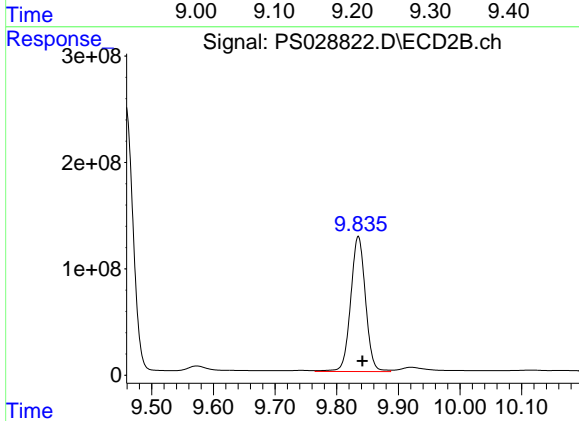
R.T.: 9.458 min
 Delta R.T.: -0.006 min
 Response: 4153515275
 Conc: 190.54 ng/ml



#11 2,4,5-TP (SILVEX)

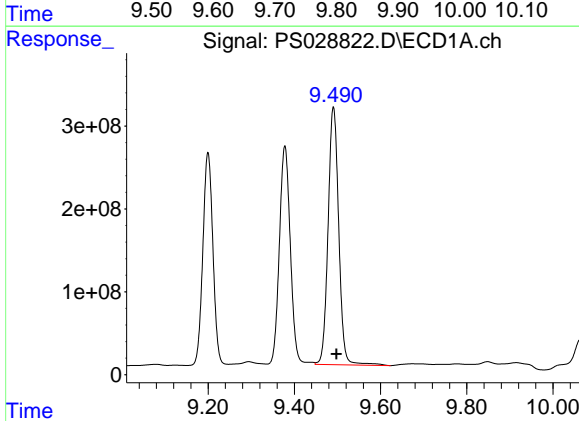
R.T.: 9.200 min
 Delta R.T.: -0.006 min
 Response: 4130706060
 Conc: 262.95 ng/ml

Instrument :
 ECD_S
 ClientSampleId :
 OU4-VSL-14-121224MS



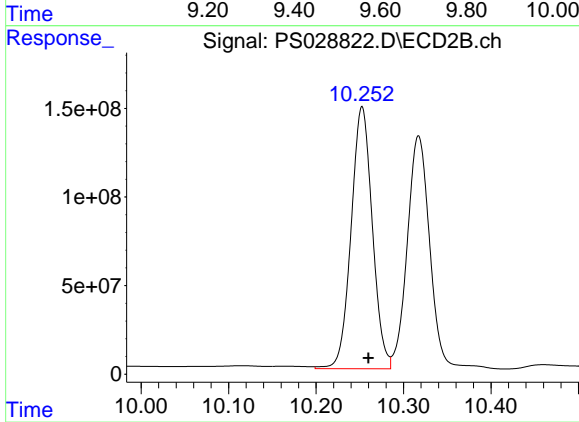
#11 2,4,5-TP (SILVEX)

R.T.: 9.835 min
 Delta R.T.: -0.007 min
 Response: 2118714928
 Conc: 235.84 ng/ml



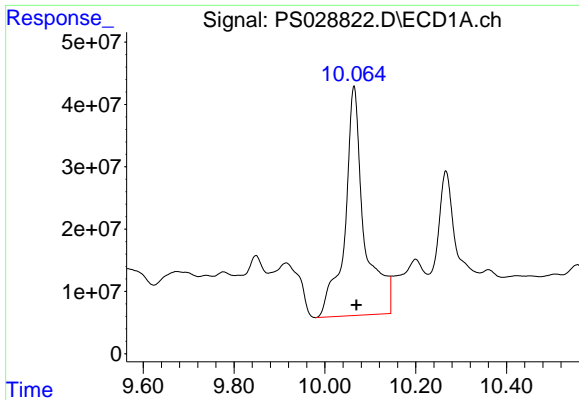
#12 2,4,5-T

R.T.: 9.491 min
 Delta R.T.: -0.007 min
 Response: 5334260084
 Conc: 327.87 ng/ml



#12 2,4,5-T

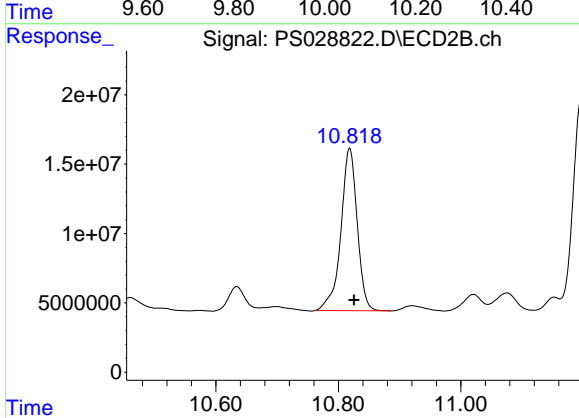
R.T.: 10.253 min
 Delta R.T.: -0.007 min
 Response: 2492185834
 Conc: 286.16 ng/ml



#13 2,4-DB

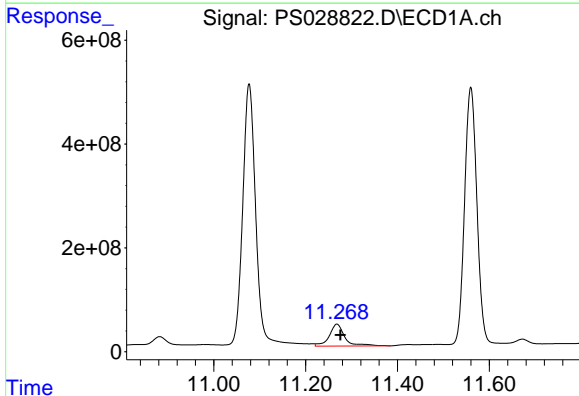
R.T.: 10.064 min
 Delta R.T.: -0.005 min
 Response: 1094653087
 Conc: 350.67 ng/ml

Instrument :
 ECD_S
 ClientSampleId :
 OU4-VSL-14-121224MS



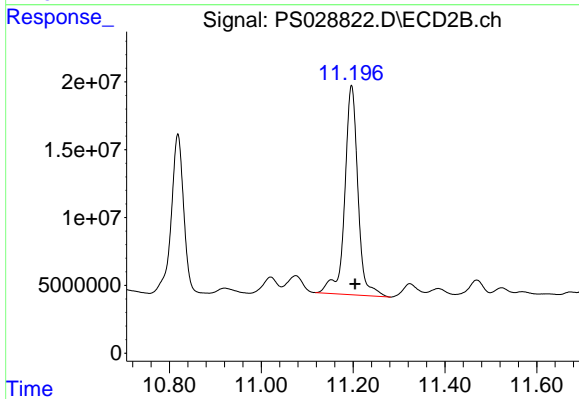
#13 2,4-DB

R.T.: 10.818 min
 Delta R.T.: -0.007 min
 Response: 217392170
 Conc: 223.86 ng/ml



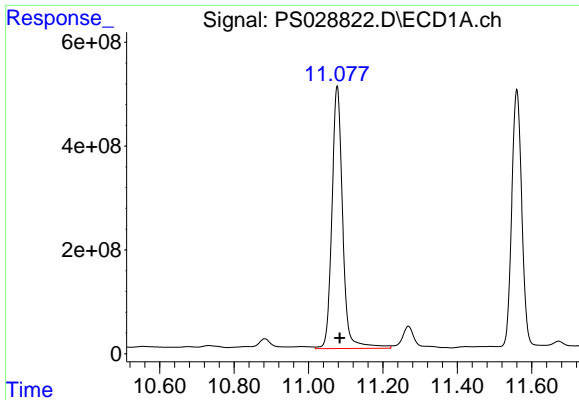
#14 DINOSEB

R.T.: 11.268 min
 Delta R.T.: -0.008 min
 Response: 987697998
 Conc: 73.48 ng/ml



#14 DINOSEB

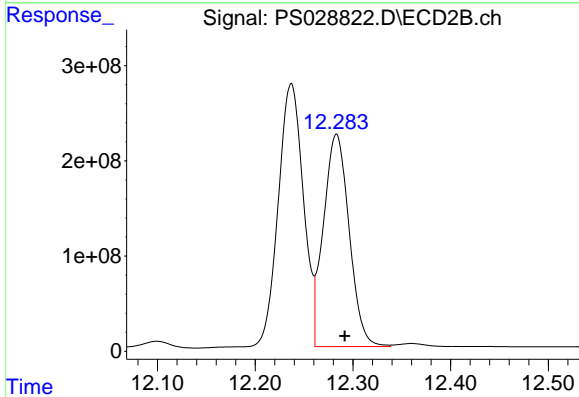
R.T.: 11.197 min
 Delta R.T.: -0.007 min
 Response: 308578838
 Conc: 50.10 ng/ml



#15 Picloram

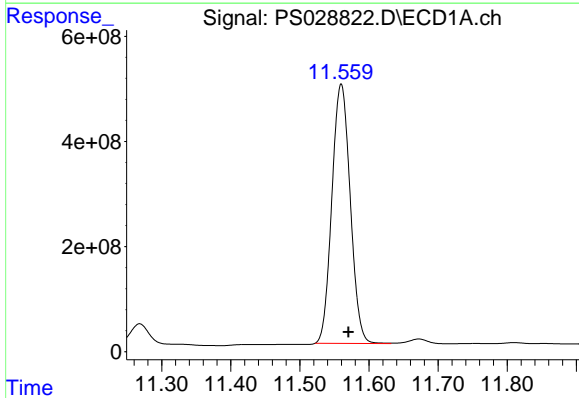
R.T.: 11.077 min
 Delta R.T.: -0.007 min
 Response: 10143129588
 Conc: 378.29 ng/ml

Instrument :
 ECD_S
 ClientSampleId :
 OU4-VSL-14-121224MS



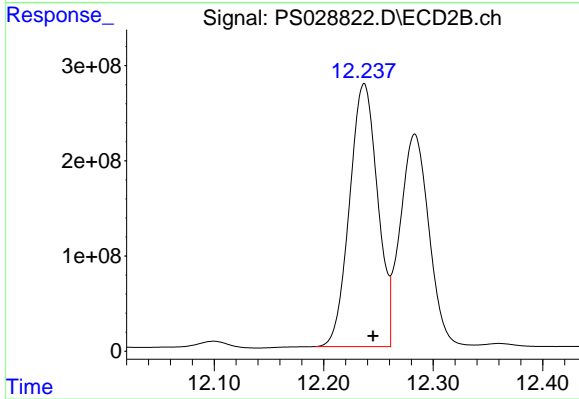
#15 Picloram

R.T.: 12.283 min
 Delta R.T.: -0.009 min
 Response: 4079739156
 Conc: 317.76 ng/ml



#16 DCPA

R.T.: 11.560 min
 Delta R.T.: -0.010 min
 Response: 9092469995
 Conc: 378.05 ng/ml



#16 DCPA

R.T.: 12.237 min
 Delta R.T.: -0.008 min
 Response: 4937040029
 Conc: 459.49 ng/ml