

Data Path : Z:\pestpcbsrv\HPCHEM1\ECD\_S\Data\PS123024\  
 Data File : PS028853.D  
 Signal(s) : Signal #1: ECD1A.ch Signal #2: ECD2B.ch  
 Acq On : 30 Dec 2024 12:02  
 Operator : AR\AJ  
 Sample : HSTDCCC750  
 Misc :  
 ALS Vial : 3 Sample Multiplier: 1

Instrument :  
 ECD\_S  
 ClientSampleId :  
 HSTDCCC750

Integration File signal 1: autoint1.e  
 Integration File signal 2: autoint2.e  
 Quant Time: Dec 31 01:38:33 2024  
 Quant Method : Z:\pestpcbsrv\HPCHEM1\ECD\_S\Method\PS122324.M  
 Quant Title : 8080.M  
 QLast Update : Mon Dec 23 13:44:25 2024  
 Response via : Initial Calibration  
 Integrator: ChemStation

Volume Inj. : 1 µl  
 Signal #1 Phase : ZB-MR1 Signal #2 Phase: ZB-MR2  
 Signal #1 Info : 30M x 0.32mm x0.5 Signal #2 Info : 30M x 0.32mm x 0.25µm

Compound	RT#1	RT#2	Resp#1	Resp#2	ng/ml	ng/ml
-----						
System Monitoring Compounds						
4) S 2,4-DCAA	7.209	7.694	1761.4E6	765.3E6	778.693	679.982
Target Compounds						
1) T Dalapon	2.621	2.675	1947.2E6	1232.9E6	691.328	626.289
2) T 3,5-DICHL...	6.384	6.657	2402.1E6	1052.5E6	728.987	634.990
3) T 4-Nitroph...	7.007	7.223	1056.3E6	527.4E6	703.263	630.156
5) T DICAMBA	7.395	7.891	7360.7E6	3585.6E6	746.476	653.137
6) T MCPP	7.576	7.994	448.6E6	208.5E6	72.034	63.801
7) T MCPA	7.725	8.237	610.7E6	290.3E6	69.671	62.656
8) T DICHLORPROP	8.099	8.604	1948.4E6	901.0E6	734.362	653.056
9) T 2,4-D	8.329	8.932	2088.3E6	910.5E6	732.861	630.920
10) T Pentachlo...	8.627	9.457	30059.4E6	14543.3E6	769.433	667.164
11) T 2,4,5-TP ...	9.203	9.833	11834.3E6	5953.0E6	753.329	662.657
12) T 2,4,5-T	9.494	10.251	12141.2E6	5682.5E6	746.270	652.471
13) T 2,4-DB	10.065	10.816	2228.8E6	634.4E6	713.991	653.250
14) T DINOSEB	11.271	11.194	9935.2E6	3920.4E6	739.129	636.520
15) T Picloram	11.081	12.280	19154.3E6	8261.6E6	714.372	643.479
16) T DCPA	11.566	12.234	18000.8E6	7168.6E6	748.443	667.183
-----						

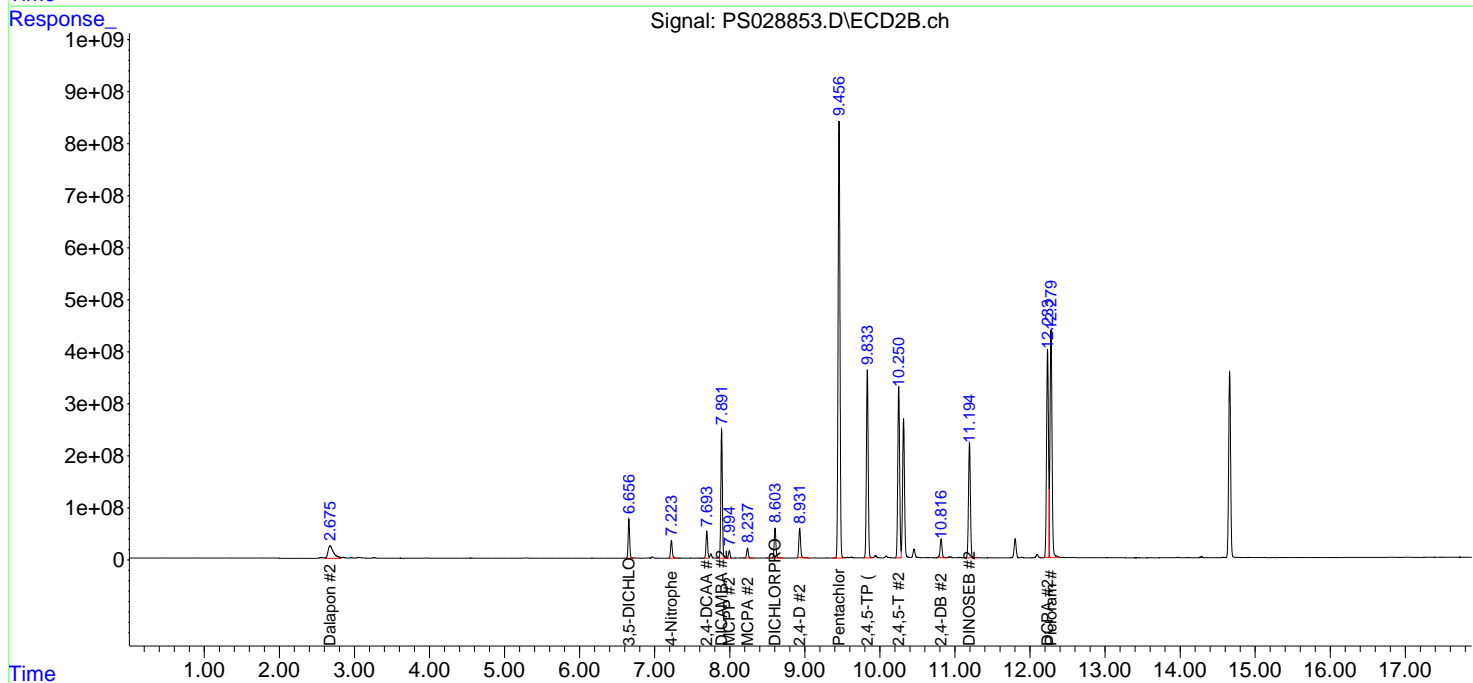
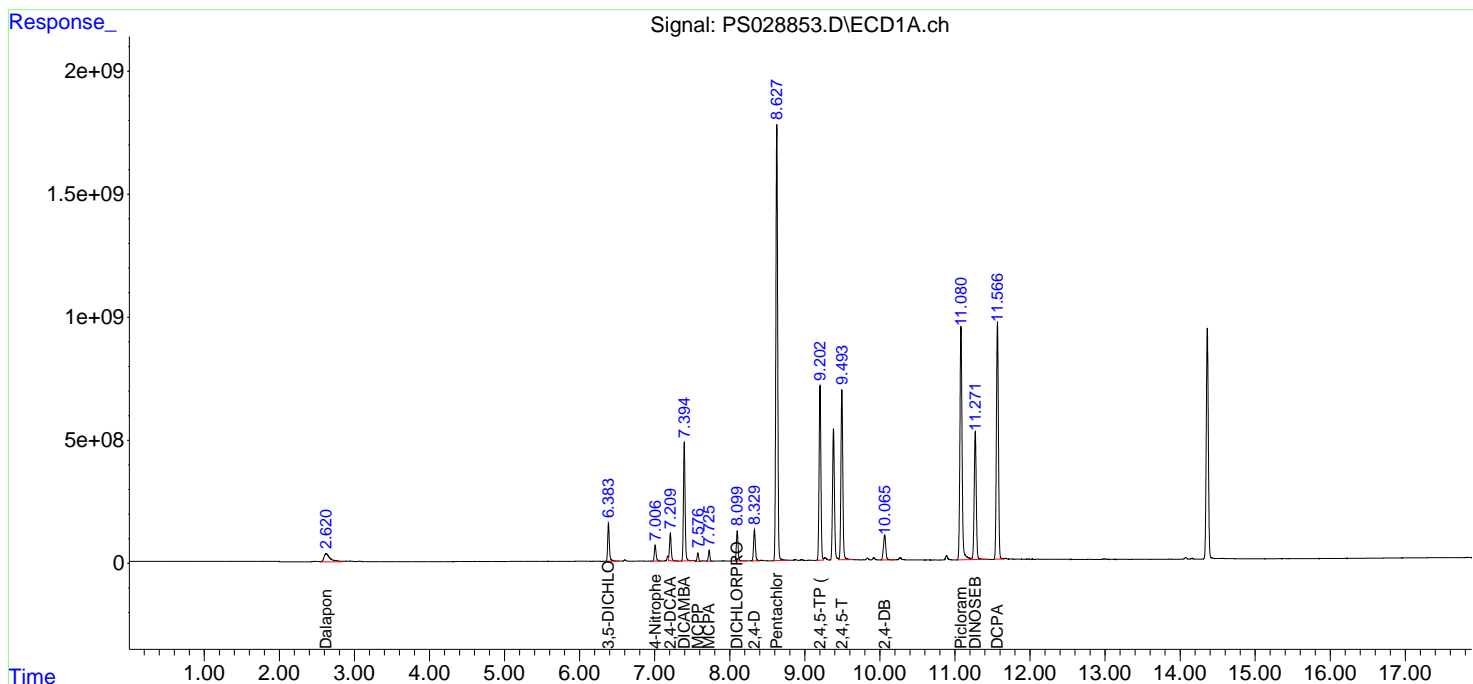
(f)=RT Delta > 1/2 Window (#)=Amounts differ by > 25% (m)=manual int.

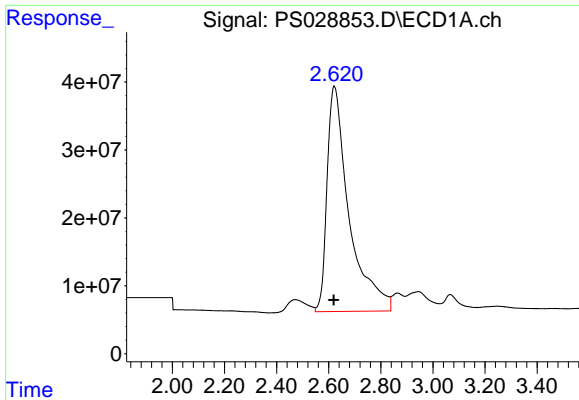
Data Path : Z:\pestpcbsrv\HPCHEM1\ECD\_S\Data\PS123024\  
 Data File : PS028853.D  
 Signal(s) : Signal #1: ECD1A.ch Signal #2: ECD2B.ch  
 Acq On : 30 Dec 2024 12:02  
 Operator : AR\AJ  
 Sample : HSTDCCC750  
 Misc :  
 ALS Vial : 3 Sample Multiplier: 1

Instrument :  
 ECD\_S  
 ClientSampleId :  
 HSTDCCC750

Integration File signal 1: autoint1.e  
 Integration File signal 2: autoint2.e  
 Quant Time: Dec 31 01:38:33 2024  
 Quant Method : Z:\pestpcbsrv\HPCHEM1\ECD\_S\Method\PS122324.M  
 Quant Title : 8080.M  
 QLast Update : Mon Dec 23 13:44:25 2024  
 Response via : Initial Calibration  
 Integrator: ChemStation

Volume Inj. : 1 µl  
 Signal #1 Phase : ZB-MR1 Signal #2 Phase: ZB-MR2  
 Signal #1 Info : 30M x 0.32mm x0.5 Signal #2 Info : 30M x 0.32mm x 0.25µm

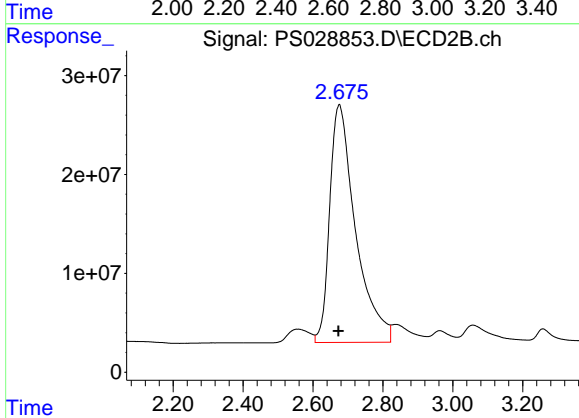




#1 Dalapon

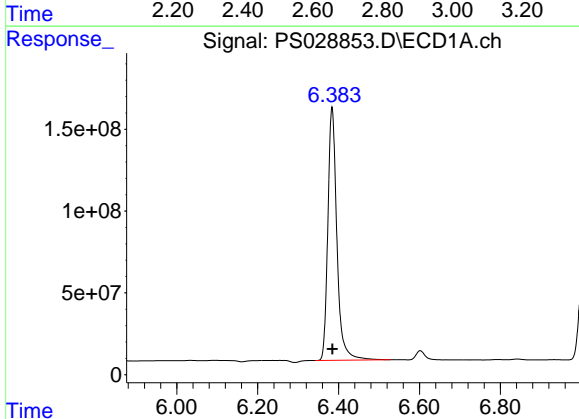
R.T.: 2.621 min  
 Delta R.T.: 0.001 min  
 Response: 1947228944  
 Conc: 691.33 ng/ml

Instrument :  
 ECD\_S  
 ClientSampleId :  
 HSTDCCC750



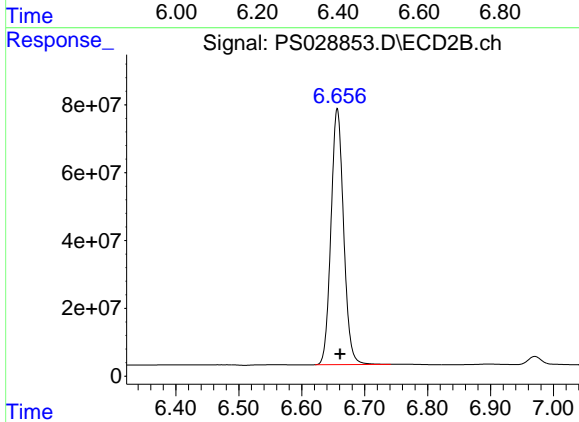
#1 Dalapon

R.T.: 2.675 min  
 Delta R.T.: 0.003 min  
 Response: 1232913611  
 Conc: 626.29 ng/ml



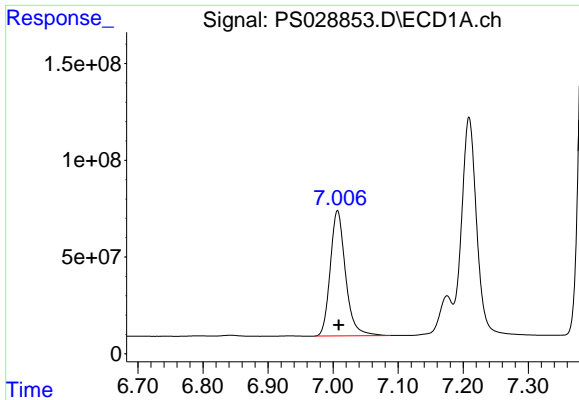
#2 3,5-DICHLOROBENZOIC ACID

R.T.: 6.384 min  
 Delta R.T.: -0.001 min  
 Response: 2402109302  
 Conc: 728.99 ng/ml



#2 3,5-DICHLOROBENZOIC ACID

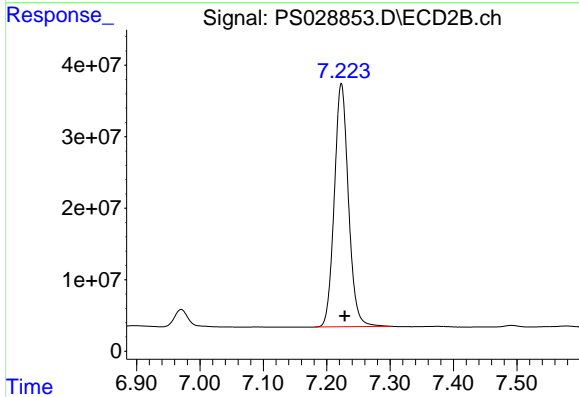
R.T.: 6.657 min  
 Delta R.T.: -0.004 min  
 Response: 1052542673  
 Conc: 634.99 ng/ml



#3 4-Nitrophenol

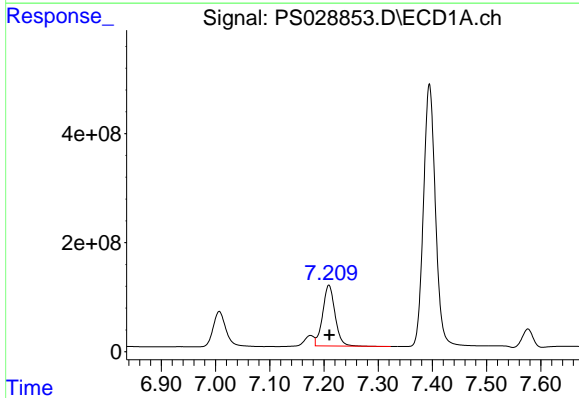
R.T.: 7.007 min  
 Delta R.T.: -0.002 min  
 Response: 1056342376  
 Conc: 703.26 ng/ml

Instrument :  
 ECD\_S  
 ClientSampleId :  
 HSTDCCC750



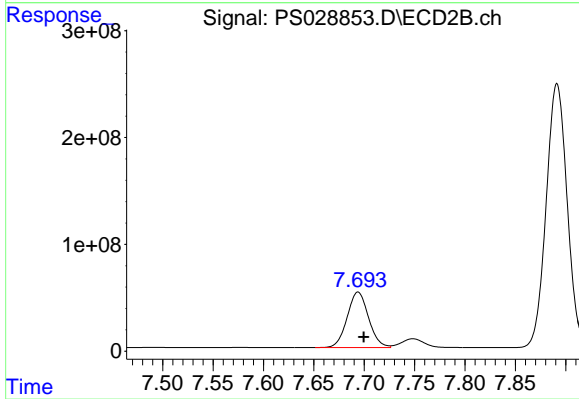
#3 4-Nitrophenol

R.T.: 7.223 min  
 Delta R.T.: -0.005 min  
 Response: 527373642  
 Conc: 630.16 ng/ml



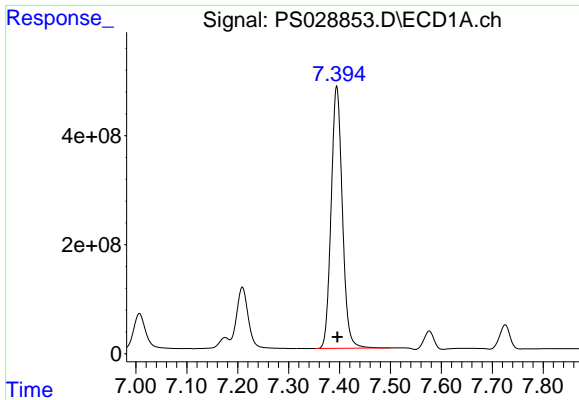
#4 2,4-DCAA

R.T.: 7.209 min  
 Delta R.T.: 0.000 min  
 Response: 1761424469  
 Conc: 778.69 ng/ml



#4 2,4-DCAA

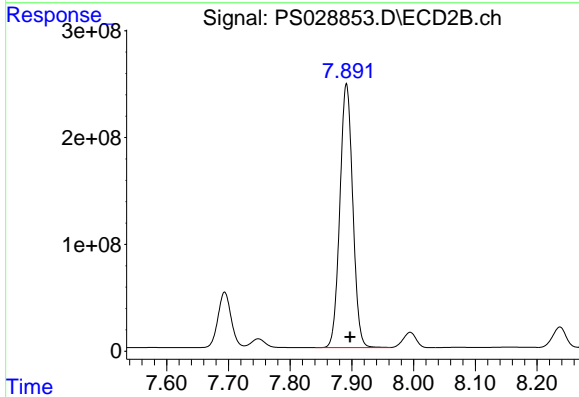
R.T.: 7.694 min  
 Delta R.T.: -0.006 min  
 Response: 765345315  
 Conc: 679.98 ng/ml



#5 DICAMBA

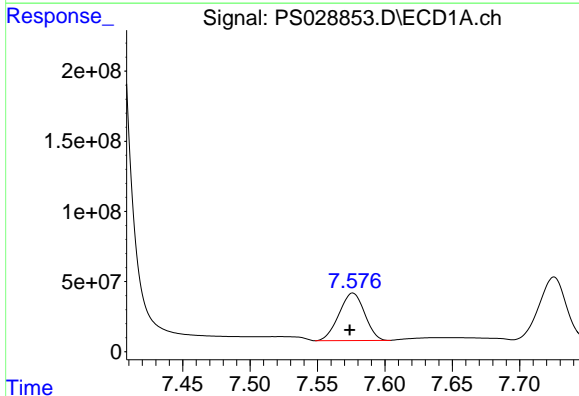
R.T.: 7.395 min  
 Delta R.T.: -0.001 min  
 Response: 7360734749  
 Conc: 746.48 ng/ml

Instrument :  
 ECD\_S  
 ClientSampleId :  
 HSTDCCC750



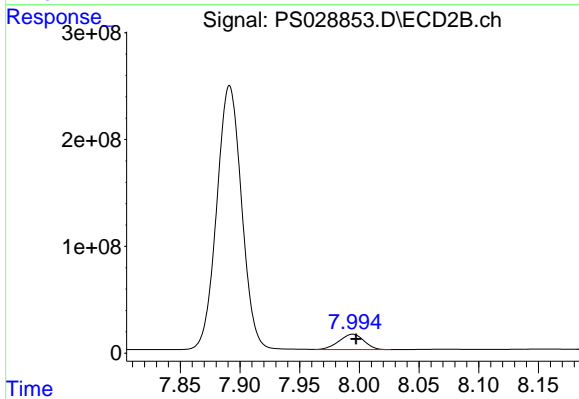
#5 DICAMBA

R.T.: 7.891 min  
 Delta R.T.: -0.006 min  
 Response: 3585639545  
 Conc: 653.14 ng/ml



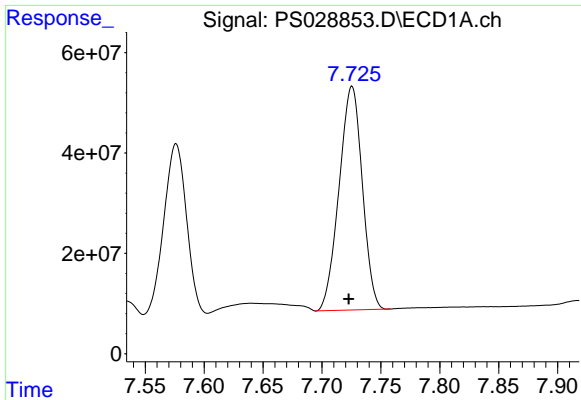
#6 MCP

R.T.: 7.576 min  
 Delta R.T.: 0.002 min  
 Response: 448568724  
 Conc: 72.03 ug/ml



#6 MCP

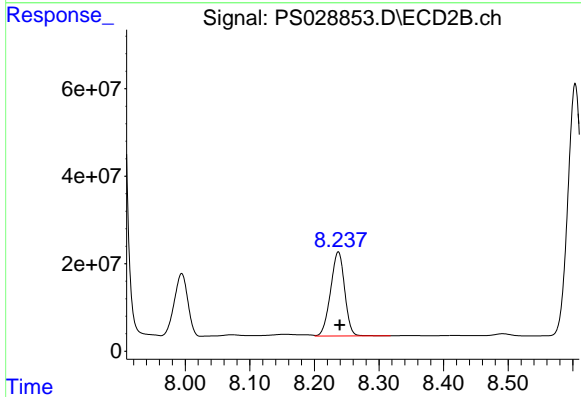
R.T.: 7.994 min  
 Delta R.T.: -0.003 min  
 Response: 208487575  
 Conc: 63.80 ug/ml



#7 MCPA

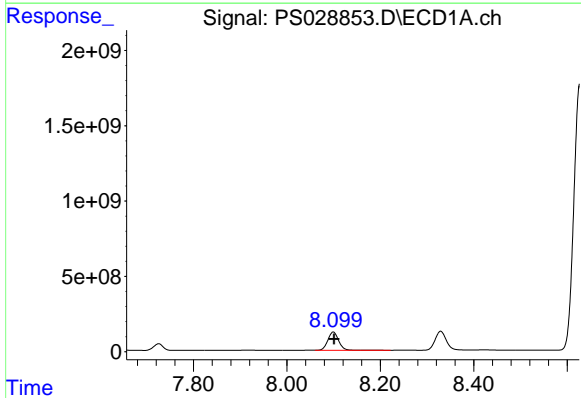
R.T.: 7.725 min  
Delta R.T.: 0.003 min  
Response: 610700824  
Conc: 69.67 ug/ml

Instrument :  
ECD\_S  
ClientSampleId :  
HSTDCCC750



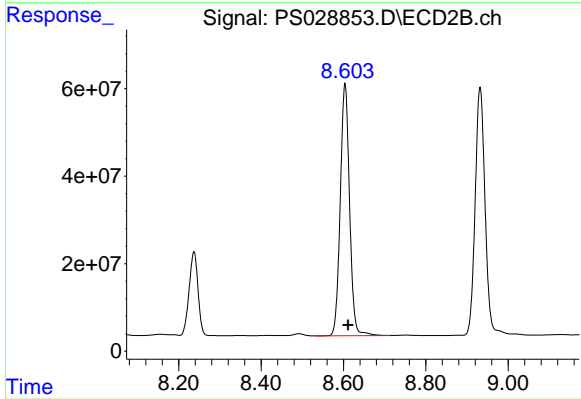
#7 MCPA

R.T.: 8.237 min  
Delta R.T.: -0.002 min  
Response: 290278880  
Conc: 62.66 ug/ml



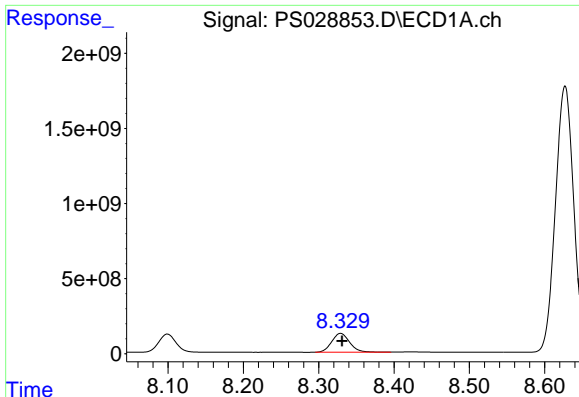
#8 DICHLORPROP

R.T.: 8.099 min  
Delta R.T.: -0.002 min  
Response: 1948390905  
Conc: 734.36 ng/ml



#8 DICHLORPROP

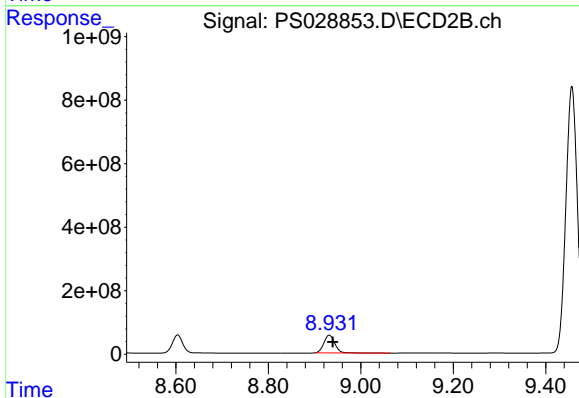
R.T.: 8.604 min  
Delta R.T.: -0.007 min  
Response: 900994262  
Conc: 653.06 ng/ml



#9 2,4-D

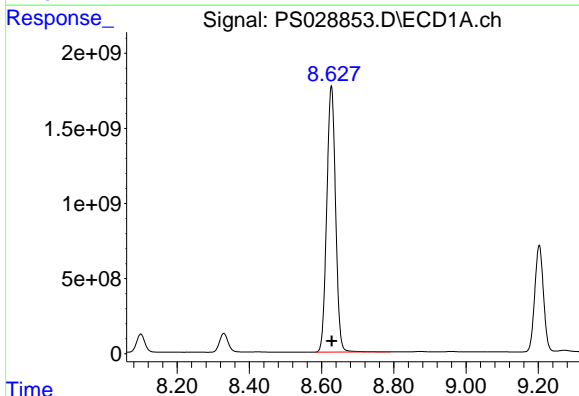
R.T.: 8.329 min  
 Delta R.T.: -0.002 min  
 Response: 2088311006  
 Conc: 732.86 ng/ml

Instrument :  
 ECD\_S  
 ClientSampleId :  
 HSTDCCC750



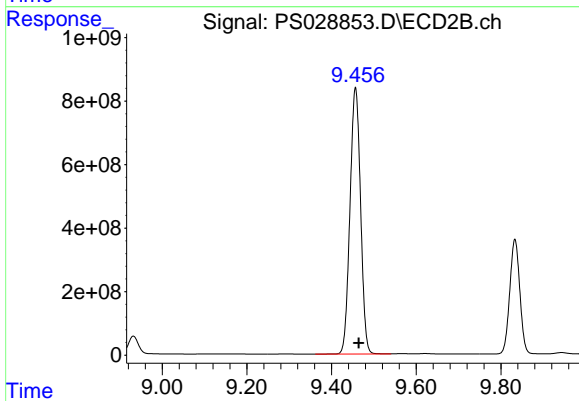
#9 2,4-D

R.T.: 8.932 min  
 Delta R.T.: -0.007 min  
 Response: 910508990  
 Conc: 630.92 ng/ml



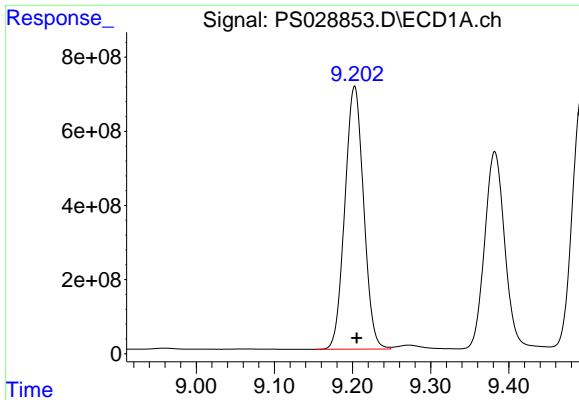
#10 Pentachlorophenol

R.T.: 8.627 min  
 Delta R.T.: -0.001 min  
 Response: 30059430980  
 Conc: 769.43 ng/ml



#10 Pentachlorophenol

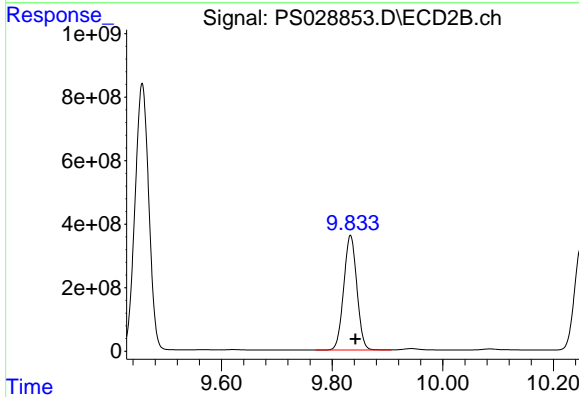
R.T.: 9.457 min  
 Delta R.T.: -0.008 min  
 Response: 14543319054  
 Conc: 667.16 ng/ml



#11 2,4,5-TP (SILVEX)

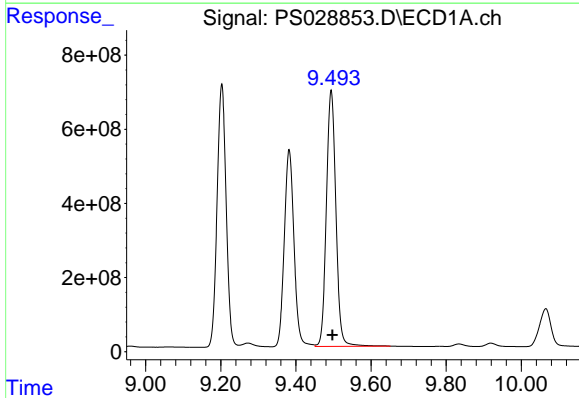
R.T.: 9.203 min  
 Delta R.T.: -0.003 min  
 Response: 11834288290  
 Conc: 753.33 ng/ml

Instrument :  
 ECD\_S  
 ClientSampleId :  
 HSTDCCC750



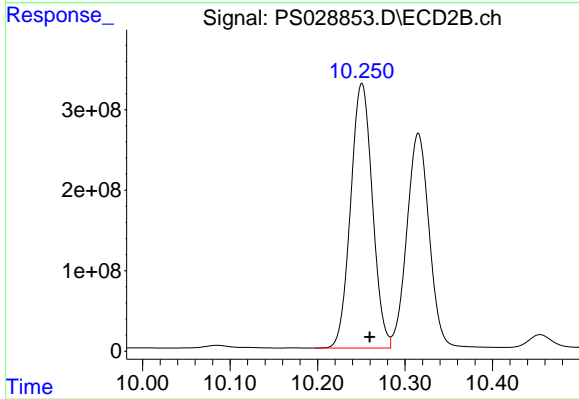
#11 2,4,5-TP (SILVEX)

R.T.: 9.833 min  
 Delta R.T.: -0.009 min  
 Response: 5952987470  
 Conc: 662.66 ng/ml



#12 2,4,5-T

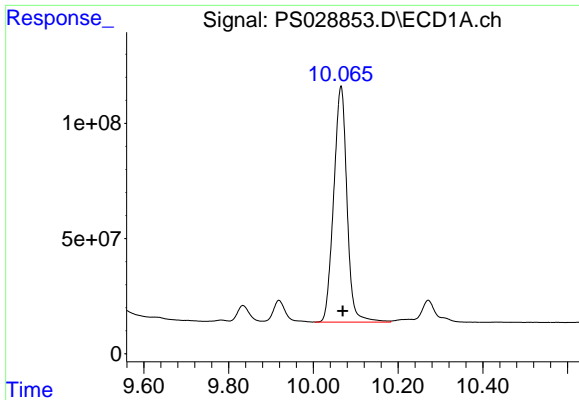
R.T.: 9.494 min  
 Delta R.T.: -0.004 min  
 Response: 12141203726  
 Conc: 746.27 ng/ml



#12 2,4,5-T

R.T.: 10.251 min  
 Delta R.T.: -0.009 min  
 Response: 5682486629  
 Conc: 652.47 ng/ml

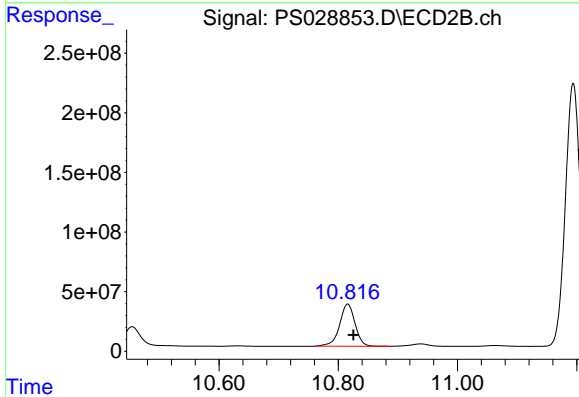




#13 2,4-DB

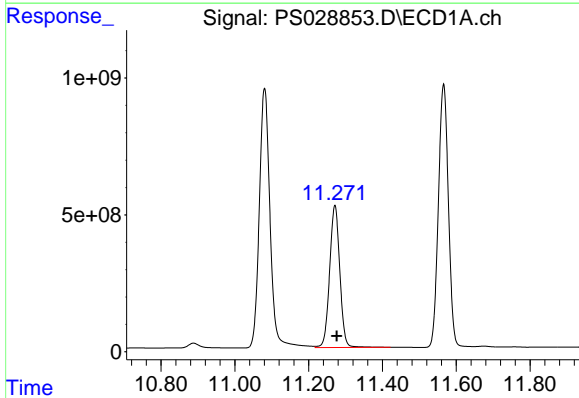
R.T.: 10.065 min  
 Delta R.T.: -0.004 min  
 Response: 2228792066  
 Conc: 713.99 ng/ml

Instrument :  
 ECD\_S  
 ClientSampleId :  
 HSTDCCC750



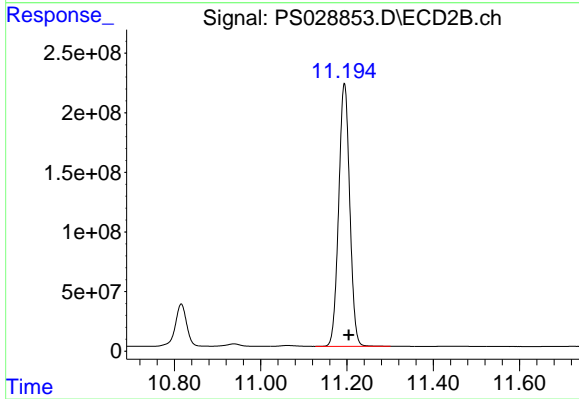
#13 2,4-DB

R.T.: 10.816 min  
 Delta R.T.: -0.010 min  
 Response: 634369856  
 Conc: 653.25 ng/ml



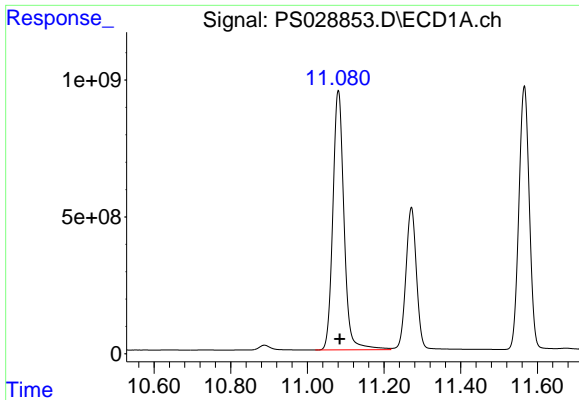
#14 DINOSEB

R.T.: 11.271 min  
 Delta R.T.: -0.005 min  
 Response: 9935171683  
 Conc: 739.13 ng/ml



#14 DINOSEB

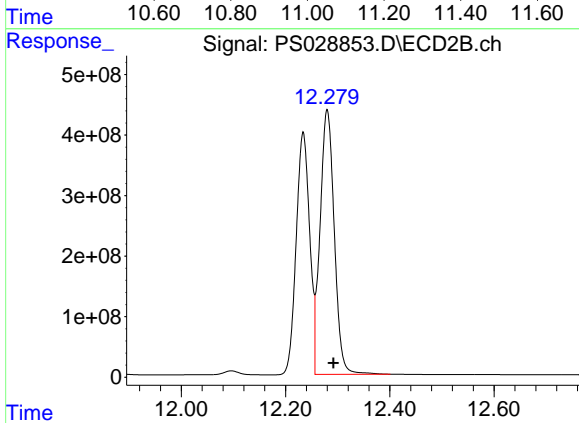
R.T.: 11.194 min  
 Delta R.T.: -0.010 min  
 Response: 3920417502  
 Conc: 636.52 ng/ml



#15 Picloram

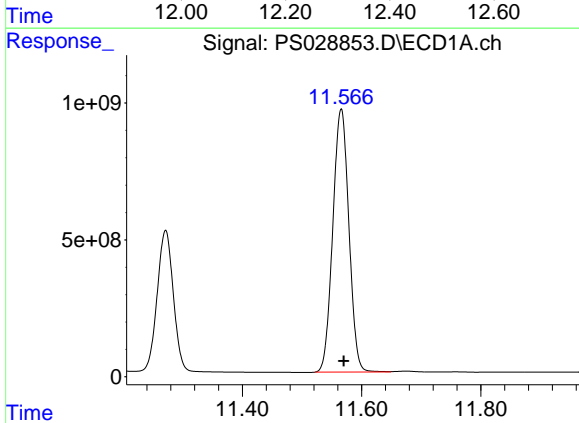
R.T.: 11.081 min  
 Delta R.T.: -0.004 min  
 Response: 19154286656  
 Conc: 714.37 ng/ml

Instrument :  
 ECD\_S  
 ClientSampleId :  
 HSTDCCC750



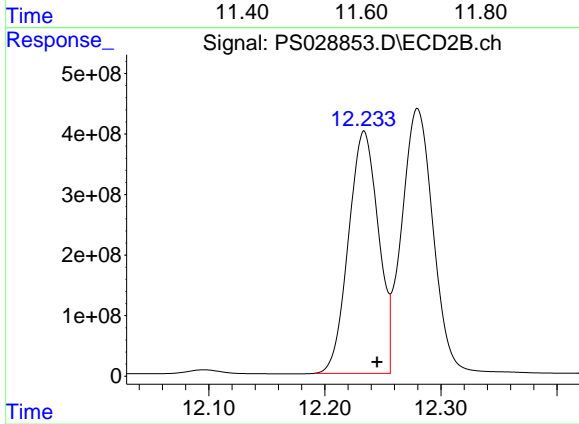
#15 Picloram

R.T.: 12.280 min  
 Delta R.T.: -0.012 min  
 Response: 8261640955  
 Conc: 643.48 ng/ml



#16 DCPA

R.T.: 11.566 min  
 Delta R.T.: -0.004 min  
 Response: 18000833847  
 Conc: 748.44 ng/ml



#16 DCPA

R.T.: 12.234 min  
 Delta R.T.: -0.011 min  
 Response: 7168597046  
 Conc: 667.18 ng/ml