

Data Path : Z:\pestpcbsrv\HPCHEM1\ECD_L\Data\PL121824\
 Data File : PL093425.D
 Signal(s) : Signal #1: ECD1A.ch Signal #2: ECD2B.ch
 Acq On : 18 Dec 2024 17:51
 Operator : AR\AJ
 Sample : P5306-05
 Misc :
 ALS Vial : 18 Sample Multiplier: 1

Instrument :
 ECD_L
ClientSampleId :
 OU4-VSL-09-121224

Manual Integrations
APPROVED

Reviewed By :Abdul Mirza 12/19/2024
 Supervised By :Ankita Jodhani 12/19/2024

Integration File signal 1: autoint1.e
 Integration File signal 2: autoint2.e
 Quant Time: Dec 19 04:30:05 2024
 Quant Method : Z:\pestpcbsrv\HPCHEM1\ECD_L\methods\PL112524.M
 Quant Title : GC Extractables
 QLast Update : Mon Nov 25 15:18:43 2024
 Response via : Initial Calibration
 Integrator: ChemStation

Volume Inj. : 1 µl
 Signal #1 Phase : ZB-MR1 Signal #2 Phase: ZB-MR2
 Signal #1 Info : 30M x 0.32mm x0.5 Signal #2 Info : 30M x 0.32mm x0.25µm

Compound	RT#1	RT#2	Resp#1	Resp#2	ng/ml	ng/ml

System Monitoring Compounds						
1) SA Tetrachlo...	3.538	2.777	55426194	62308012	21.326m	21.605
28) SA Decachlor...	9.055	7.913	40824870	63477813	23.482	22.223

Target Compounds

(f)=RT Delta > 1/2 Window (#)=Amounts differ by > 25% (m)=manual int.

Data Path : Z:\pestpcbsrv\HPCHEM1\ECD_L\Data\PL121824\
 Data File : PL093425.D
 Signal(s) : Signal #1: ECD1A.ch Signal #2: ECD2B.ch
 Acq On : 18 Dec 2024 17:51
 Operator : AR\AJ
 Sample : P5306-05
 Misc :
 ALS Vial : 18 Sample Multiplier: 1

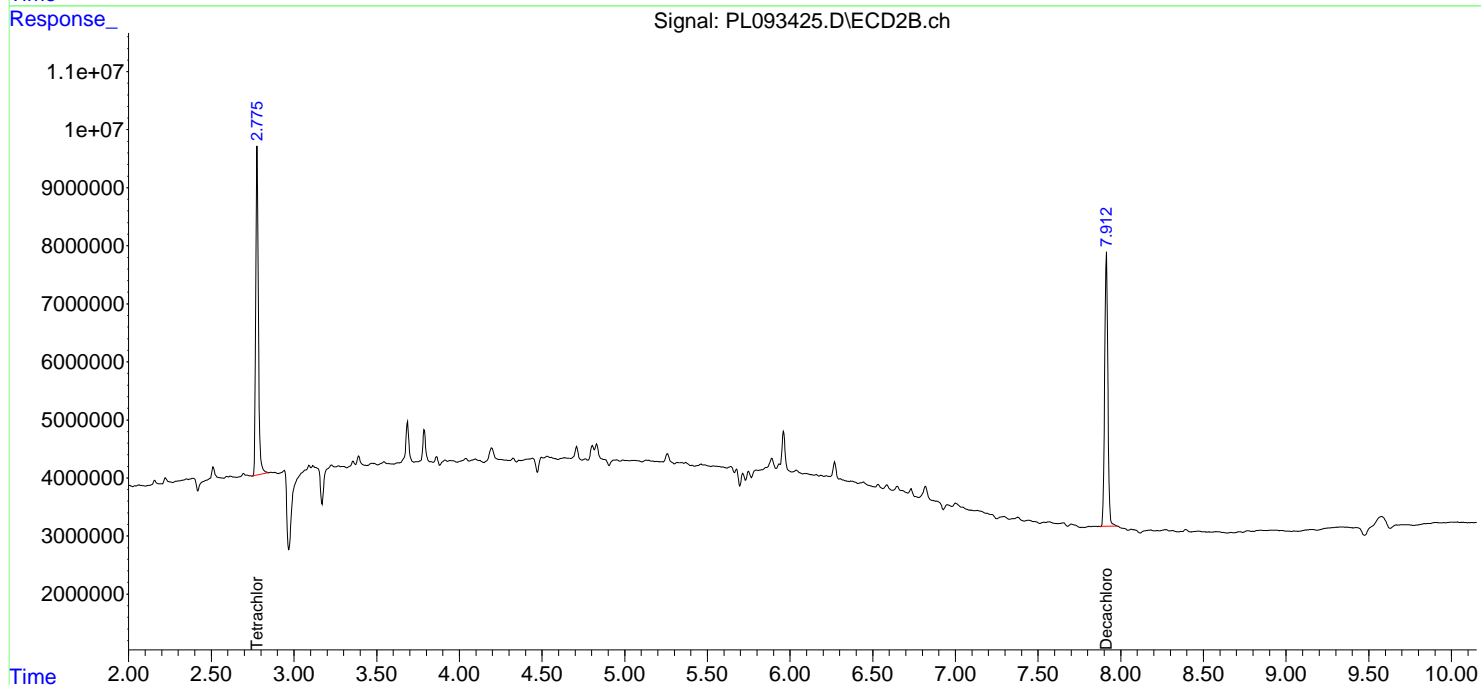
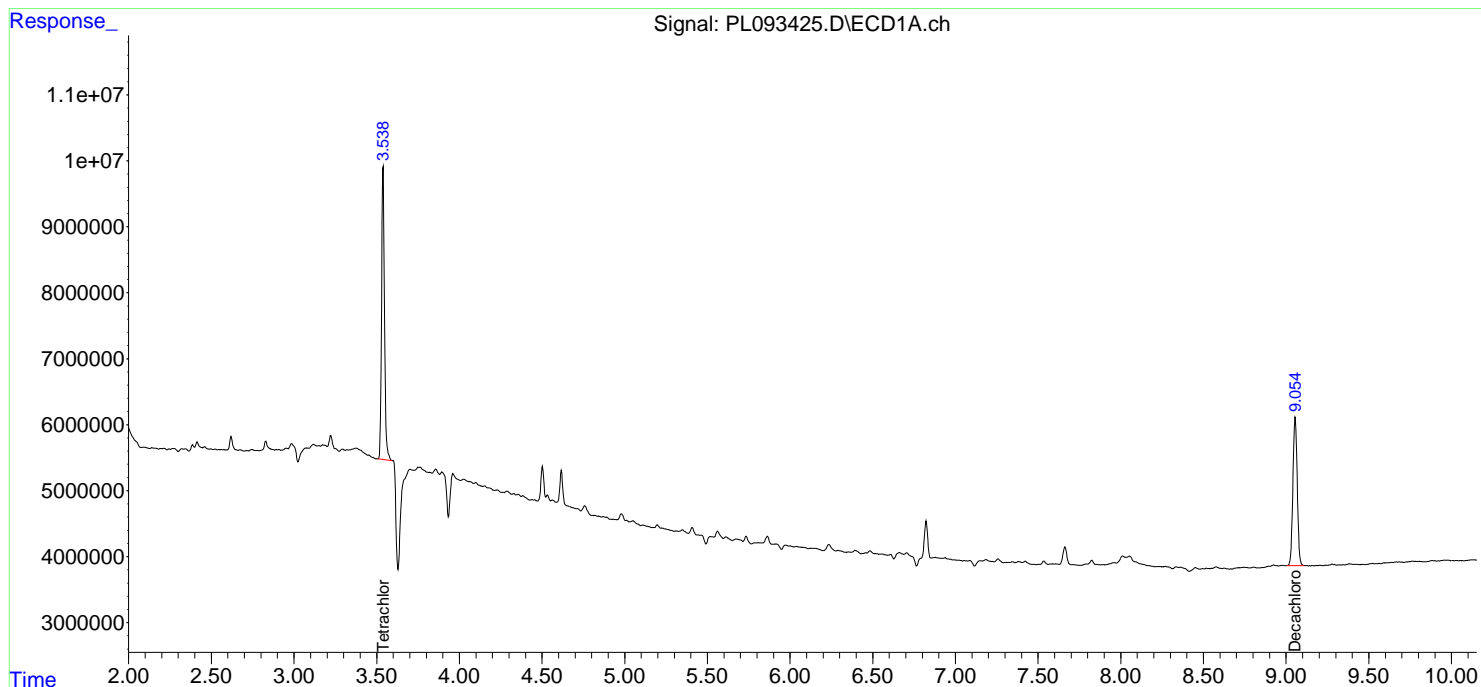
Instrument :
 ECD_L
 ClientSampleId :
 OU4-VSL-09-121224

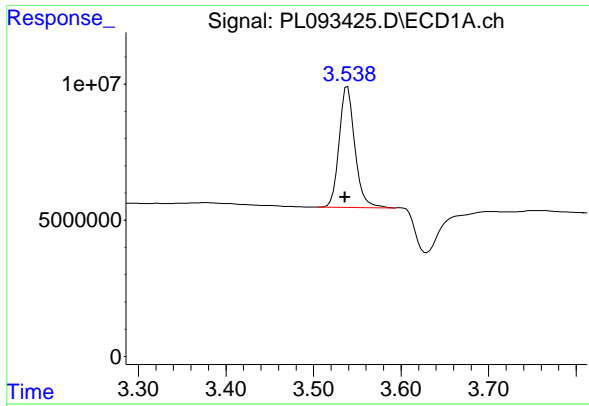
Manual Integrations
APPROVED

Reviewed By :Abdul Mirza 12/19/2024
 Supervised By :Ankita Jodhani 12/19/2024

Integration File signal 1: autoint1.e
 Integration File signal 2: autoint2.e
 Quant Time: Dec 19 04:30:05 2024
 Quant Method : Z:\pestpcbsrv\HPCHEM1\ECD_L\methods\PL112524.M
 Quant Title : GC Extractables
 QLast Update : Mon Nov 25 15:18:43 2024
 Response via : Initial Calibration
 Integrator: ChemStation

Volume Inj. : 1 µl
 Signal #1 Phase : ZB-MR1 Signal #2 Phase: ZB-MR2
 Signal #1 Info : 30M x 0.32mm x0.5 Signal #2 Info : 30M x 0.32mm x0.25µm





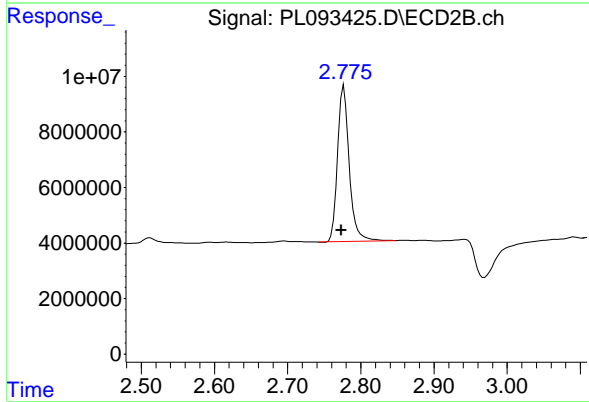
#1 Tetrachloro-m-xylene

R.T.: 3.538 min
 Delta R.T.: 0.002 min
 Response: 55426194
 Conc: 21.33 ng/ml

Instrument :
 ECD_L
 Client Sample Id :
 OU4-VSL-09-121224

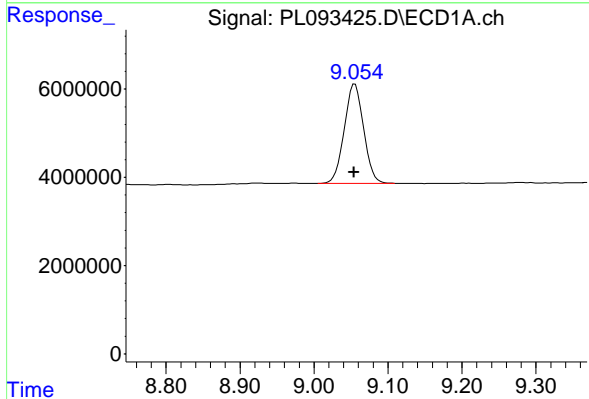
Manual Integrations
 APPROVED

Reviewed By :Abdul Mirza 12/19/2024
 Supervised By :Ankita Jodhani 12/19/2024



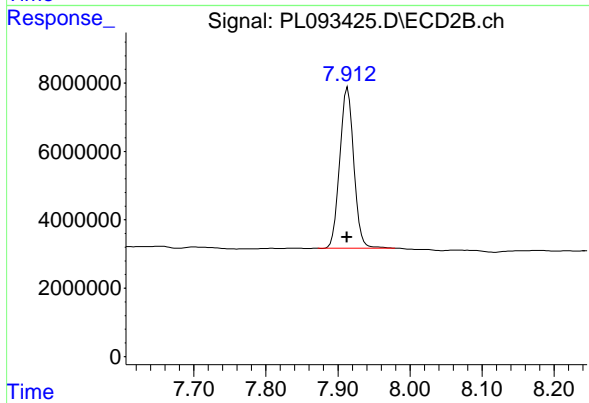
#1 Tetrachloro-m-xylene

R.T.: 2.777 min
 Delta R.T.: 0.003 min
 Response: 62308012
 Conc: 21.60 ng/ml



#28 Decachlorobiphenyl

R.T.: 9.055 min
 Delta R.T.: 0.001 min
 Response: 40824870
 Conc: 23.48 ng/ml



#28 Decachlorobiphenyl

R.T.: 7.913 min
 Delta R.T.: 0.001 min
 Response: 63477813
 Conc: 22.22 ng/ml