

Data Path : Z:\pestpcbsrv\HPCHEM1\ECD_L\Data\PL121924\
 Data File : PL093440.D
 Signal(s) : Signal #1: ECD1A.ch Signal #2: ECD2B.ch
 Acq On : 19 Dec 2024 16:40
 Operator : AR\AJ
 Sample : P5306-15
 Misc :
 ALS Vial : 13 Sample Multiplier: 1

Instrument :
 ECD_L
ClientSampleId :
 OU4-VSL-14-121224

Manual Integrations
APPROVED
 Reviewed By :Abdul Mirza 12/20/2024
 Supervised By :Ankita Jodhani 12/20/2024

Integration File signal 1: autoint1.e
 Integration File signal 2: autoint2.e
 Quant Time: Dec 19 21:52:42 2024
 Quant Method : Z:\pestpcbsrv\HPCHEM1\ECD_L\methods\PL112524.M
 Quant Title : GC Extractables
 QLast Update : Mon Nov 25 15:18:43 2024
 Response via : Initial Calibration
 Integrator: ChemStation

Volume Inj. : 1 µl
 Signal #1 Phase : ZB-MR2 Signal #2 Phase: ZB-MR1
 Signal #1 Info : 30M x 0.32mm x0.2 Signal #2 Info : 30M x 0.32mm x0.5µm

Compound	RT#1	RT#2	Resp#1	Resp#2	ng/ml	ng/ml

System Monitoring Compounds						
1) SA Tetrachlo...	3.536	2.774	52682624	58349924	20.271m	20.232
28) SA Decachlor...	9.051	7.910	36476172	57143090	20.981	20.005

Target Compounds

(f)=RT Delta > 1/2 Window (#)=Amounts differ by > 25% (m)=manual int.

Data Path : Z:\pestpcbsrv\HPCHEM1\ECD_L\Data\PL121924\
 Data File : PL093440.D
 Signal(s) : Signal #1: ECD1A.ch Signal #2: ECD2B.ch
 Acq On : 19 Dec 2024 16:40
 Operator : AR\AJ
 Sample : P5306-15
 Misc :
 ALS Vial : 13 Sample Multiplier: 1

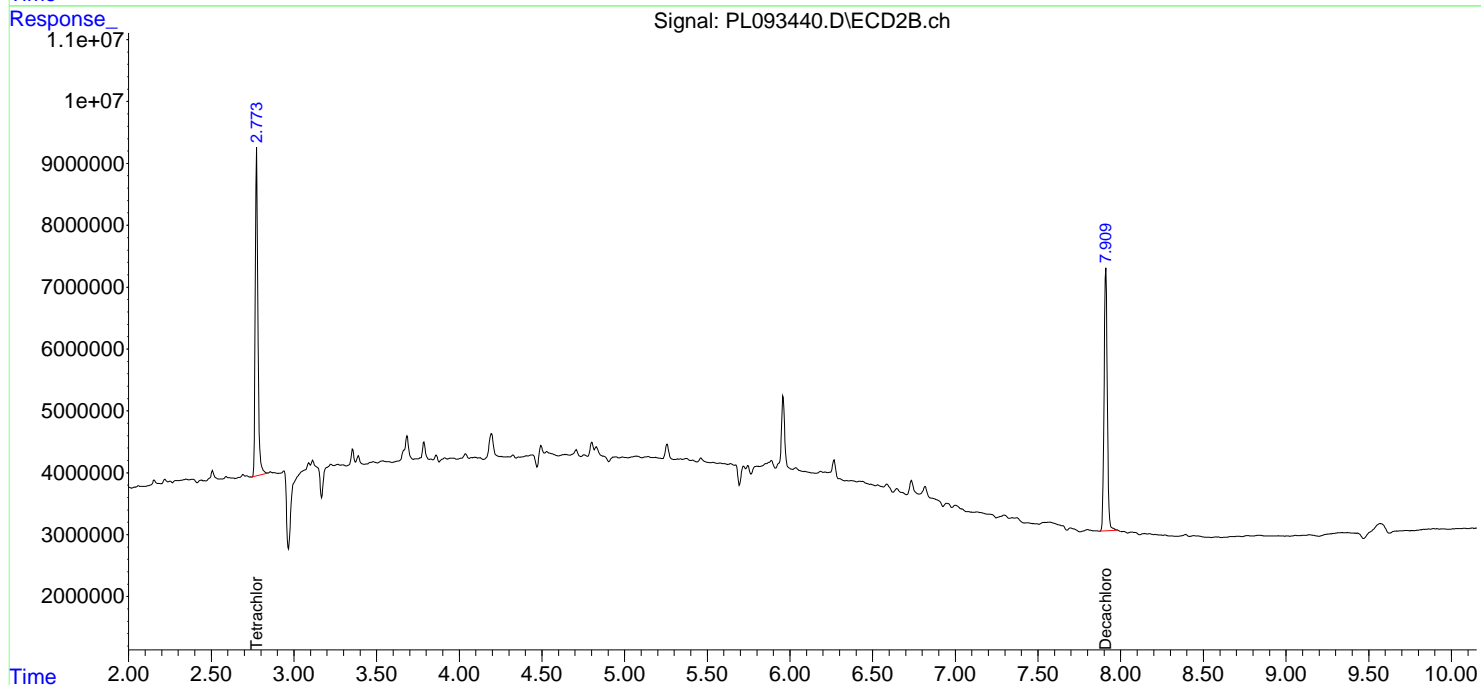
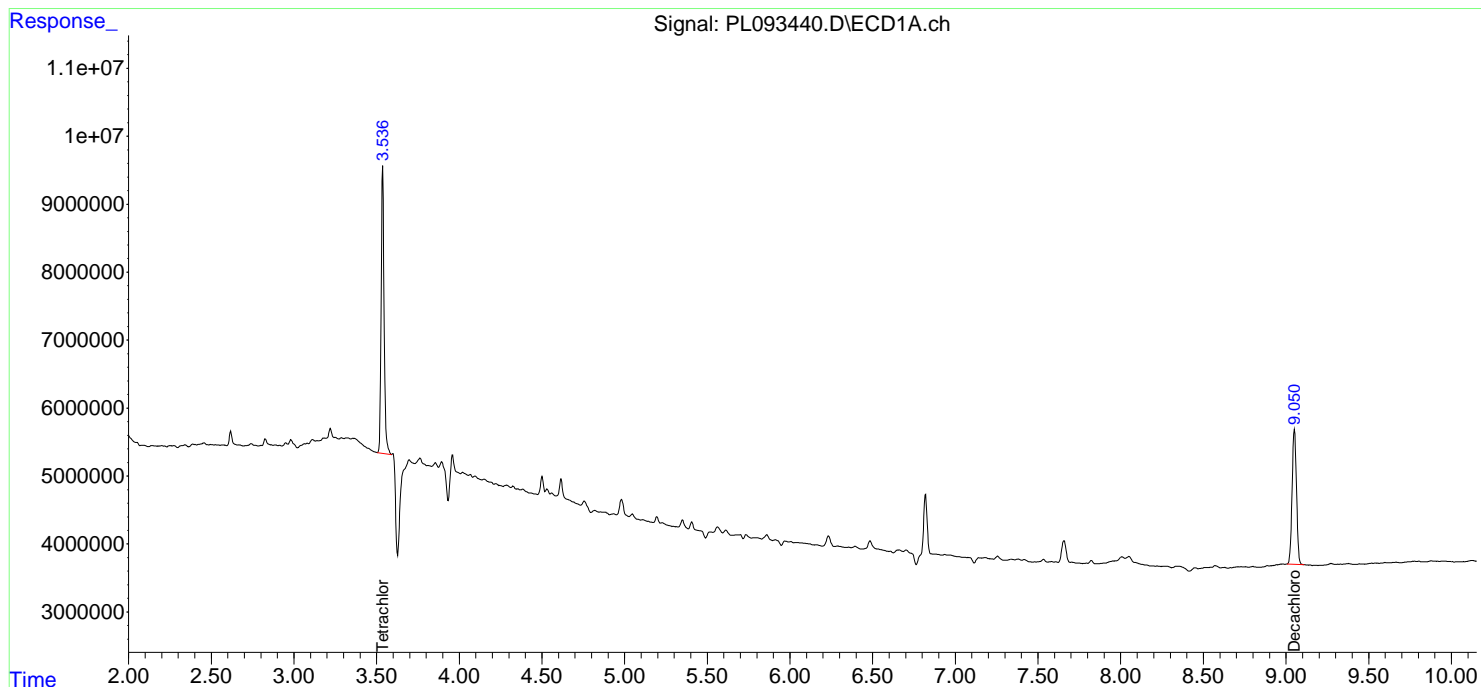
Instrument :
 ECD_L
 ClientSampleId :
 OU4-VSL-14-121224

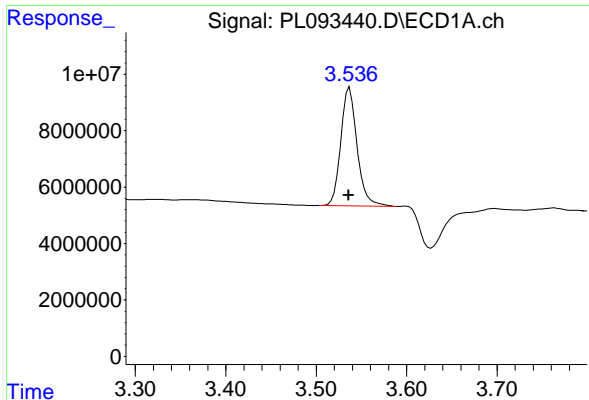
Manual Integrations
 APPROVED

Reviewed By :Abdul Mirza 12/20/2024
 Supervised By :Ankita Jodhani 12/20/2024

Integration File signal 1: autoint1.e
 Integration File signal 2: autoint2.e
 Quant Time: Dec 19 21:52:42 2024
 Quant Method : Z:\pestpcbsrv\HPCHEM1\ECD_L\methods\PL112524.M
 Quant Title : GC Extractables
 QLast Update : Mon Nov 25 15:18:43 2024
 Response via : Initial Calibration
 Integrator: ChemStation

Volume Inj. : 1 µl
 Signal #1 Phase : ZB-MR2 Signal #2 Phase: ZB-MR1
 Signal #1 Info : 30M x 0.32mm x0.2 Signal #2 Info : 30M x 0.32mm x0.5µm





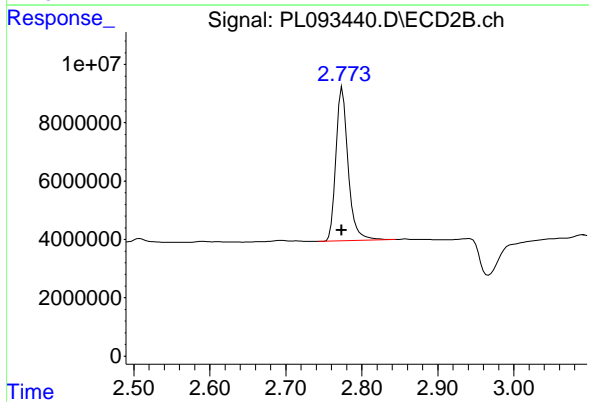
#1 Tetrachloro-m-xylene

R.T.: 3.536 min
 Delta R.T.: 0.000 min
 Response: 52682624
 Conc: 20.27 ng/ml

Instrument :
 ECD_L
 Client Sample Id :
 OU4-VSL-14-121224

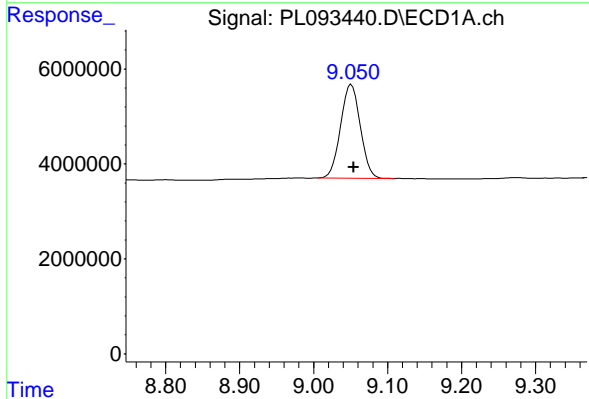
Manual Integrations
 APPROVED

Reviewed By :Abdul Mirza 12/20/2024
 Supervised By :Ankita Jodhani 12/20/2024



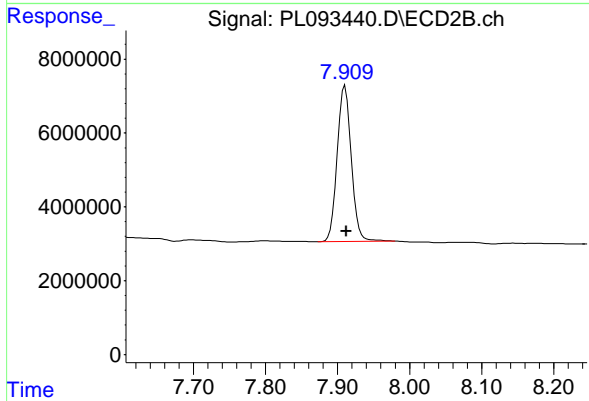
#1 Tetrachloro-m-xylene

R.T.: 2.774 min
 Delta R.T.: 0.000 min
 Response: 58349924
 Conc: 20.23 ng/ml



#28 Decachlorobiphenyl

R.T.: 9.051 min
 Delta R.T.: -0.003 min
 Response: 36476172
 Conc: 20.98 ng/ml



#28 Decachlorobiphenyl

R.T.: 7.910 min
 Delta R.T.: -0.002 min
 Response: 57143090
 Conc: 20.00 ng/ml