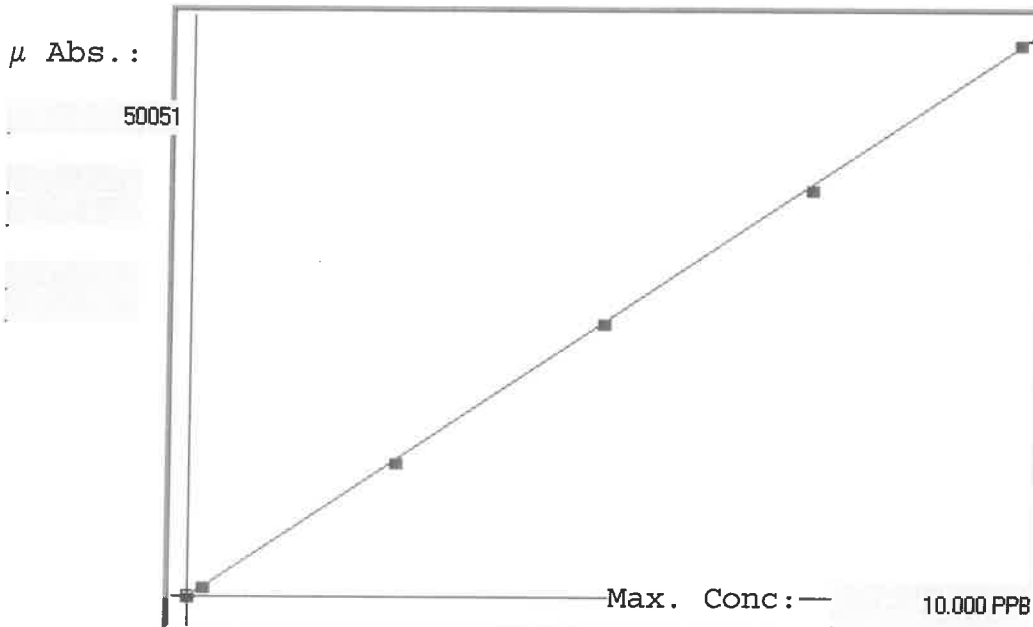


LB134138

SFAM01.1

INSTRUMENT ID: CV1

Linear



A= 0.0000e+000

B= 2.0037e-004 slope

C= 2.1837e-002 y-intercept

Rho= 0.9999516

Accept=Accepted

Std ID	Conc.	Calc.	Dev.	Mean	SD or %RSD	Rep 1	Rep 2	Rep 3	Rep 4	Rep 5	$\sigma/0$
0.00	0.000	0.030	0.030	39	0.000	39	0				
0.05	0.050					442	0				
0.20	0.200	0.209	0.009	934	0.0 %	934					
2.50	2.500	2.469	-0.031	12212	0.0 %	12212					
5.00	5.000	5.001	0.001	24850	0.0 %	24850					
7.50	7.500	7.441	-0.059	37030	0.0 %	37030					
10.0	10.000	10.050	0.050	50051	0.0 %	50051					

1001511

LB134138

INSTRUMENT ID : CV1

Sample ID	Extended ID	μ Abs.	Conc.	Std Conc	Method	Units	Date	Type
	0 S0	39	-		0 SFAM01.1	PPB	12/31/2024 13:21	Std
	0.2 S01	934	-		0.2 SFAM01.1	PPB	12/31/2024 13:24	Std
	2.5 S02	12212	-		2.5 SFAM01.1	PPB	12/31/2024 13:26	Std
	5 S03	24850	-		5 SFAM01.1	PPB	12/31/2024 13:28	Std
	7.5 S04	37030	-		7.5 SFAM01.1	PPB	12/31/2024 13:30	Std
	10 S05	50051	-		10 SFAM01.1	PPB	12/31/2024 13:33	Std
ICV039	ICV039	17977	3.6238 -		SFAM01.1	PPB	12/31/2024 13:36	SMPL
ICB039	ICB039	-72	0.0074 -		SFAM01.1	PPB	12/31/2024 13:38	SMPL
CCV091	CCV091	25392	5.1095 -		SFAM01.1	PPB	12/31/2024 13:40	SMPL
CCB091	CCB091	-98	0.0022 -		SFAM01.1	PPB	12/31/2024 13:42	SMPL
PB165933BL	PBS933	111	0.0441 -		SFAM01.1	PPB	12/31/2024 13:45	SMPL
P5335-01	ME2904	417	0.1054 -		SFAM01.1	PPB	12/31/2024 13:47	SMPL
P5335-02	ME2905	444	0.1108 -		SFAM01.1	PPB	12/31/2024 13:49	SMPL
P5335-03	ME2906	9500	1.9253 -		SFAM01.1	PPB	12/31/2024 13:51	SMPL
P5335-04	ME2907	1382	0.2987 -		SFAM01.1	PPB	12/31/2024 13:54	SMPL
P5335-05	ME2908	1211	0.2645 -		SFAM01.1	PPB	12/31/2024 13:56	SMPL
P5335-06	ME2909	1998	0.4222 -		SFAM01.1	PPB	12/31/2024 13:58	SMPL
P5335-07	ME2910	396	0.1012 -		SFAM01.1	PPB	12/31/2024 14:00	SMPL
P5335-08	ME2911	1479	0.3182 -		SFAM01.1	PPB	12/31/2024 14:03	SMPL
P5335-09	ME2912	922	0.2066 -		SFAM01.1	PPB	12/31/2024 14:05	SMPL
P5335-10	ME2913	2243	0.4713 -		SFAM01.1	PPB	12/31/2024 14:07	SMPL
P5335-11	ME2914	3051	0.6332 -		SFAM01.1	PPB	12/31/2024 14:10	SMPL
P5335-12	ME2915	2430	0.5087 -		SFAM01.1	PPB	12/31/2024 14:12	SMPL
P5335-13	ME2916	2112	0.445 -		SFAM01.1	PPB	12/31/2024 14:14	SMPL
P5335-14	ME2917	3423	0.7077 -		SFAM01.1	PPB	12/31/2024 14:16	SMPL
P5335-15	ME2918	3210	0.665 -		SFAM01.1	PPB	12/31/2024 14:19	SMPL
P5335-16	ME2919	2650	0.5528 -		SFAM01.1	PPB	12/31/2024 14:21	SMPL
P5335-17	ME2920	4673	0.9581 -		SFAM01.1	PPB	12/31/2024 14:23	SMPL
P5335-18	ME2921	582	0.1385 -		SFAM01.1	PPB	12/31/2024 14:25	SMPL
P5335-19	ME2923	1032	0.2286 -		SFAM01.1	PPB	12/31/2024 14:31	SMPL
CCV092	CCV092	24600	4.9508 -		SFAM01.1	PPB	12/31/2024 14:33	SMPL
CCB092	CCB092	-78	0.0062 -		SFAM01.1	PPB	12/31/2024 14:35	SMPL
P5335-20	ME2923D	1232	0.2687 -		SFAM01.1	PPB	12/31/2024 14:38	SMPL
P5335-21	ME2923S	12317	2.4897 -		SFAM01.1	PPB	12/31/2024 14:43	SMPL
CCV093	CCV093	25669	5.165 -		SFAM01.1	PPB	12/31/2024 14:45	SMPL
CCB093	CCB093	-44	0.013 -		SFAM01.1	PPB	12/31/2024 14:48	SMPL