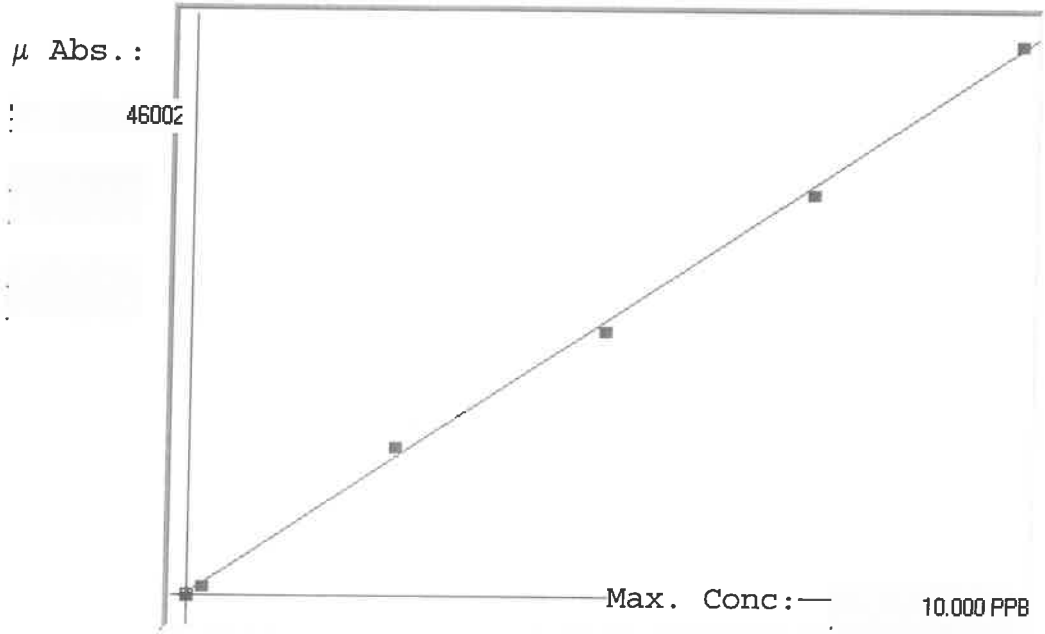


LB134173

SFAM01.1

INSTRUMENT ID: CV1

Linear



A= 0.0000e+000  
 B= 2.2002e-004 slope  
 C= -2.6529e-002 + = ml / cu cep  
 Rho= 0.9994343  
 Accept= Accepted

Std ID	Conc.	Calc.	Dev.	Mean	SD or %RSD	Rep 1	Rep 2	Rep 3	Rep 4	Rep 5	%D
0.00	0.000	-0.019	-0.019	36	0.000	36	0				=
0.05	0.050					442	0				-19
0.20	0.200	0.162	-0.038	859	0.0 %	859					9
2.50	2.500	2.719	0.219	12480	0.0 %	12480					-3
5.00	5.000	4.859	-0.141	22203	0.0 %	22203					-2
7.50	7.500	7.383	-0.117	33679	0.0 %	33679					1
10.0	10.000	10.095	0.095	46002	0.0 %	46002					

LB134177

INSTRUMENT ID : CV1

Sample ID	Extended ID	$\mu$ Abs.	Conc.	Std Conc	Method	Units	Date	Type
	0 S0	36	-		0 SFAM01.1	PPB	1/7/2025 9:24	Std
	0.2 S01	859	-		0.2 SFAM01.1	PPB	1/7/2025 9:26	Std
	2.5 S02	12480	-		2.5 SFAM01.1	PPB	1/7/2025 9:29	Std
	5 S03	22203	-		5 SFAM01.1	PPB	1/7/2025 9:34	Std
	7.5 S04	33679	-		7.5 SFAM01.1	PPB	1/7/2025 9:41	Std
	10 S05	46002	-		10 SFAM01.1	PPB	1/7/2025 9:53	Std
ICV046	ICV046	18813	4.1127 -		SFAM01.1	PPB	1/7/2025 9:58	SMPL
ICB046	ICB046	7	-0.025 -		SFAM01.1	PPB	1/7/2025 10:04	SMPL
CCV009	CCV009	23712	5.1906 -		SFAM01.1	PPB	1/7/2025 10:06	SMPL
CCB009	CCB009	-115	-0.0518 -		SFAM01.1	PPB	1/7/2025 10:09	SMPL
PB165969BL	PBS969	341	0.0485 -		SFAM01.1	PPB	1/7/2025 10:11	SMPL
P5347-05	MJNBZ5	2837	0.5977 -		SFAM01.1	PPB	1/7/2025 10:18	SMPL
P5347-06	MJNBZ5D	2533	0.5308 -		SFAM01.1	PPB	1/7/2025 10:20	SMPL
P5347-07	MJNBZ5S	13471	2.9373 -		SFAM01.1	PPB	1/7/2025 10:23	SMPL
P5352-01	ME2922	820	0.1539 -		SFAM01.1	PPB	1/7/2025 10:25	SMPL
P5352-02	ME2924	1003	0.1942 -		SFAM01.1	PPB	1/7/2025 10:27	SMPL
P5352-03	ME2925	1444	0.2912 -		SFAM01.1	PPB	1/7/2025 10:29	SMPL
P5352-04	ME2926	799	0.1493 -		SFAM01.1	PPB	1/7/2025 10:37	SMPL
P5352-05	ME2926D	753	0.1391 -		SFAM01.1	PPB	1/7/2025 10:40	SMPL
P5352-06	ME2926S	10587	2.3028 -		SFAM01.1	PPB	1/7/2025 10:42	SMPL
CCV010	CCV010	23129	5.0623 -		SFAM01.1	PPB	1/7/2025 10:47	SMPL
CCB010	CCB010	30	-0.0199 -		SFAM01.1	PPB	1/7/2025 10:52	SMPL