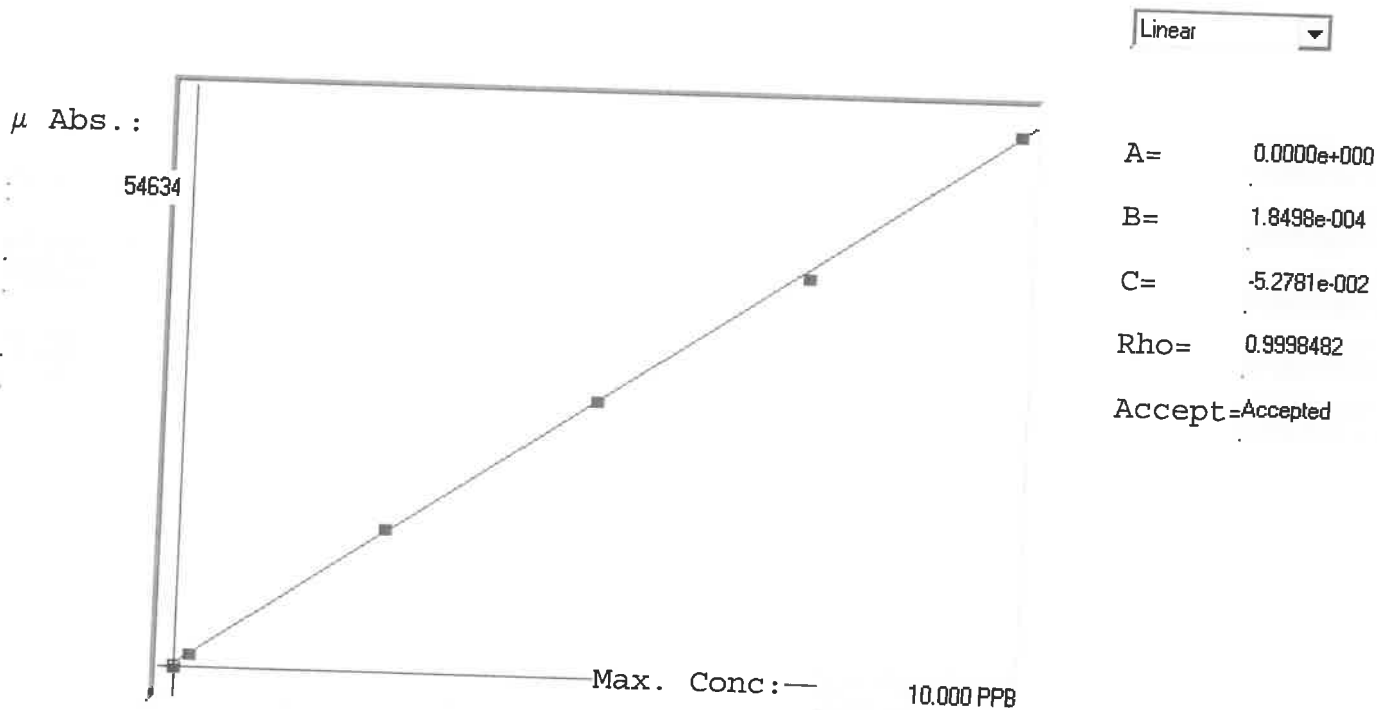


LB 134050

7471B

INSTRUMENT ID: CVJ



Std ID	Conc.	Calc.	Dev.	Mean	SD or %RSD	Rep 1	Rep 2	Rep 3	Rep 4	Rep 5	
0.0	0.000	-0.035	-0.035	95	0.000	95					6/11
0.2	0.200	0.198	-0.002	1356	0.0 %	1356					1
2.5	2.500	2.570	0.070	14180	0.0 %	14180					1
5.0	5.000	5.034	0.034	27500	0.0 %	27500					3
7.5	7.500	7.379	-0.121	40177	0.0 %	40177					1
10.0	10.000	10.053	0.053	54634	0.0 %	54634					2

LB134050 INSTRUMENT ID : CV1

Method: 7471B

Operator: Admin

Date of Analysis: 20 Dec 2024 13:55:55

Sample ID	Extended ID	μ Abs	Conc	Std Conc	Method	Units	Date	Type	Type
0.0 - 1	50	95	-	0.00007471B	PPB		20 Dec 2024 13:58:41	S	Std
0.2 - 1	SP-2	1356	-	0.20007471B	PPB		20 Dec 2024 14:00:58	S	Std
2.5 - 1	SP-2	14180	-	2.50007471B	PPB		20 Dec 2024 14:03:15	S	Std
5.0 - 1	SP-2	27500	-	5.00007471B	PPB		20 Dec 2024 14:05:31	S	Std
7.5 - 1	SP-2	40177	-	7.50007471B	PPB		20 Dec 2024 14:07:50	S	Std
10.0 - 1	SP-2	54634	-	10.00007471B	PPB		20 Dec 2024 14:10:09	S	Std
ICV28 - 1	ICV28	21957	4.0089	7471B	PPB		20 Dec 2024 14:13:22	U	SMPL
ICB28 - 1	ICB28	-52	-0.0624	7471B	PPB		20 Dec 2024 14:15:37	U	SMPL
CCV57 - 1	CCV57	27568	5.0468	7471B	PPB		20 Dec 2024 14:17:54	U	SMPL
CCB57 - 1	CCB57	-85	-0.0685	7471B	PPB		20 Dec 2024 14:20:10	U	SMPL
CRA - 1	CRA	1337	0.1945	7471B	PPB		20 Dec 2024 14:22:28	U	SMPL
HighStd - 1	HighStd	55443	10.2031	7471B	PPB		20 Dec 2024 14:24:44	U	SMPL
ChkStd - 1	ChkStd	36455	6.6907	7471B	PPB		20 Dec 2024 14:26:58	U	SMPL
PB165798BL - 1	PBS	-237	-0.0966	7471B	PPB		20 Dec 2024 14:29:23	U	SMPL
PB165798BS - 1	LCSS	23496	4.2935	7471B	PPB		20 Dec 2024 14:31:46	U	SMPL
P5316-01 - 1	TT-304-IDWSO-20241217-1	13	-0.0504	7471B	PPB		20 Dec 2024 14:34:02	U	SMPL
P5339-01 - 1	TR-06-12182024	1565	0.2367	7471B	PPB		20 Dec 2024 14:36:21	U	SMPL
P5355-01 - 1	RBR251688	5629	0.9885	7471B	PPB		20 Dec 2024 14:38:38	U	SMPL
P5362-01 - 1	WC-SOIL-20241219	2794	0.4641	7471B	PPB		20 Dec 2024 14:40:56	U	SMPL
CCV58 - 1	CCV58	26905	4.9241	7471B	PPB		20 Dec 2024 14:43:13	U	SMPL
CCB58 - 1	CCB58	-113	-0.0737	7471B	PPB		20 Dec 2024 14:45:28	U	SMPL
P5365-01 - 1	TAPFTA-SB01I-4.5-121924-00-T1	912	0.1159	7471B	PPB		20 Dec 2024 14:47:47	U	SMPL
P5365-01DUP - 1	TAPFTA-SB01I-4.5-121924-00-T1DUP	922	0.1178	7471B	PPB		20 Dec 2024 14:50:02	U	SMPL
P5365-01MS - 1	TAPFTA-SB01I-4.5-121924-00-T1MS	22381	4.0873	7471B	PPB		20 Dec 2024 14:52:18	U	SMPL
P5365-01MSD - 1	TAPFTA-SB01I-4.5-121924-00-T1MSD	23970	4.3812	7471B	PPB		20 Dec 2024 14:54:34	U	SMPL
P5365-01LX5 - 1		-200	-0.0898	7471B	PPB		20 Dec 2024 14:56:53	U	SMPL
P5365-01A - 1		23305	4.2582	7471B	PPB		20 Dec 2024 14:59:12	U	SMPL
CCV59 - 1	CCV59	26801	4.9049	7471B	PPB		20 Dec 2024 15:01:28	U	SMPL
CCB59 - 1	CCB59	-76	-0.0668	7471B	PPB		20 Dec 2024 15:03:48	U	SMPL