

Data Path : Z:\svoasrv\HPCHEM1\BNA\_N\Data\BN011025\  
 Data File : BN035912.D  
 Acq On : 10 Jan 2025 21:20  
 Operator : RC/JU  
 Sample : SSTDCCC0.4  
 Misc :  
 ALS Vial : 2 Sample Multiplier: 1

Instrument :  
 BNA\_N  
 ClientSampleId :  
 SSTDCCC0.4EC

Quant Time: Jan 10 22:14:48 2025  
 Quant Method : Z:\svoasrv\HPCHEM1\BNA\_N\Methods\8270-SIM-BN010225.M  
 Quant Title : ASP BNA STANDARDS FOR 5 POINT CALIBRATION  
 QLast Update : Thu Jan 02 15:39:17 2025  
 Response via : Initial Calibration

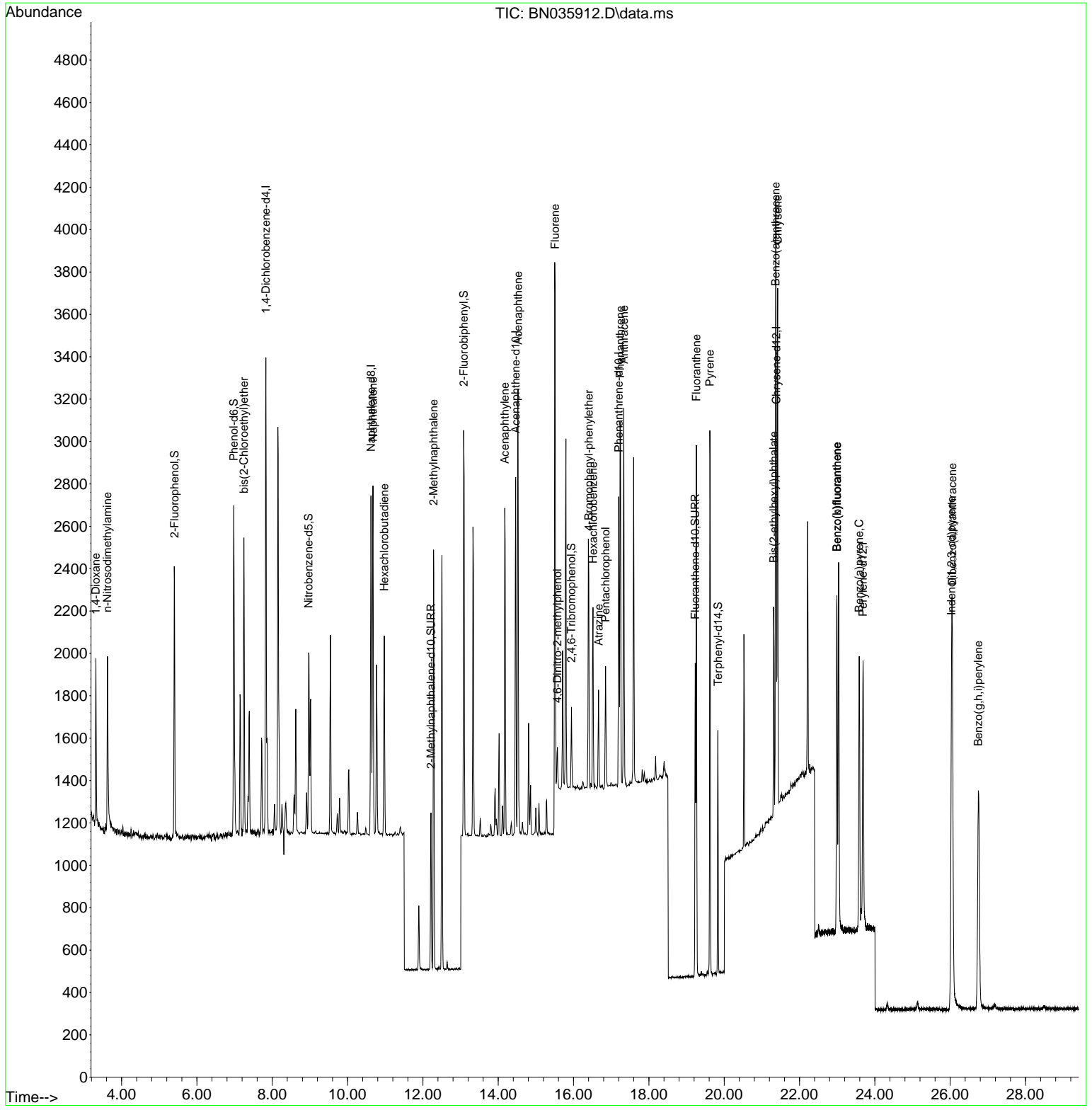
Compound	R.T.	QIon	Response	Conc	Units	Dev(Min)	
Internal Standards							
1) 1,4-Dichlorobenzene-d4	7.832	152	1033	0.400	ng	0.00	
7) Naphthalene-d8	10.622	136	1896	0.400	ng	0.00	
13) Acenaphthene-d10	14.463	164	908	0.400	ng	0.00	
19) Phenanthrene-d10	17.199	188	1715	0.400	ng	#-0.01	
29) Chrysene-d12	21.385	240	1402	0.400	ng	0.00	
35) Perylene-d12	23.686	264	1689	0.400	ng	# 0.00	
System Monitoring Compounds							
4) 2-Fluorophenol	5.405	112	945	0.373	ng	0.00	
5) Phenol-d6	6.979	99	1174	0.373	ng	0.00	
8) Nitrobenzene-d5	8.967	82	666	0.444	ng	-0.01	
11) 2-Methylnaphthalene-d10	12.213	152	977	0.385	ng	0.00	
14) 2,4,6-Tribromophenol	15.945	330	200	0.459	ng	-0.01	
15) 2-Fluorobiphenyl	13.084	172	1635	0.410	ng	0.00	
27) Fluoranthene-d10	19.230	212	1648	0.387	ng	0.00	
31) Terphenyl-d14	19.834	244	1072	0.384	ng	0.00	
Target Compounds							
2) 1,4-Dioxane	3.318	88	424	0.413	ng	#	92
3) n-Nitrosodimethylamine	3.621	42	786	0.439	ng		86
6) bis(2-Chloroethyl)ether	7.247	93	901	0.376	ng		96
9) Naphthalene	10.675	128	2101	0.395	ng		98
10) Hexachlorobutadiene	10.974	225	735	0.425	ng	#	99
12) 2-Methylnaphthalene	12.284	142	1282	0.389	ng		96
16) Acenaphthylene	14.174	152	1721	0.402	ng		100
17) Acenaphthene	14.527	154	1171	0.418	ng		95
18) Fluorene	15.511	166	1214	0.394	ng		97
20) 4,6-Dinitro-2-methylph...	15.573	198	180	0.604	ng	#	80
21) 4-Bromophenyl-phenylether	16.404	248	505	0.429	ng	#	78
22) Hexachlorobenzene	16.516	284	643	0.401	ng		96
23) Atrazine	16.665	200	330	0.418	ng	#	93
24) Pentachlorophenol	16.851	266	267	0.470	ng		98
25) Phenanthrene	17.236	178	2015	0.403	ng		100
26) Anthracene	17.335	178	1809	0.397	ng		99
28) Fluoranthene	19.262	202	2230	0.382	ng		99
30) Pyrene	19.620	202	2313	0.406	ng		99
32) Benzo(a)anthracene	21.367	228	1990	0.403	ng		97
33) Chrysene	21.421	228	2033	0.393	ng		97
34) Bis(2-ethylhexyl)phtha...	21.313	149	959	0.477	ng		99
36) Indeno(1,2,3-cd)pyrene	26.034	276	2628	0.395	ng		97
37) Benzo(b)fluoranthene	22.991	252	2167	0.373	ng		95
38) Benzo(k)fluoranthene	22.991	252	2167	0.377	ng		97
39) Benzo(a)pyrene	23.584	252	1927	0.384	ng		97
40) Dibenzo(a,h)anthracene	26.057	278	2091	0.395	ng		95
41) Benzo(g,h,i)perylene	26.747	276	2297	0.388	ng		97

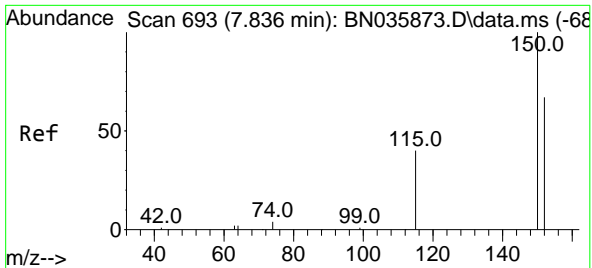
(#) = qualifier out of range (m) = manual integration (+) = signals summed

Data Path : Z:\svoasrv\HPCHEM1\BNA\_N\Data\BN011025\  
 Data File : BN035912.D  
 Acq On : 10 Jan 2025 21:20  
 Operator : RC/JU  
 Sample : SSTDCCC0.4  
 Misc :  
 ALS Vial : 2 Sample Multiplier: 1

Instrument :  
 BNA\_N  
 ClientSampleId :  
 SSTDCCC0.4EC

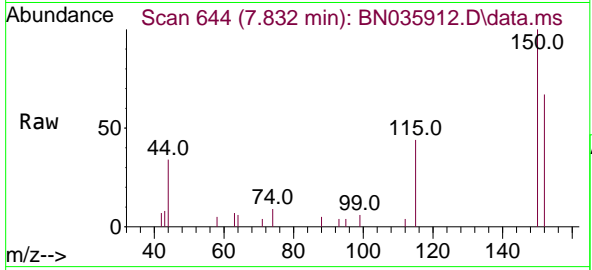
Quant Time: Jan 10 22:14:48 2025  
 Quant Method : Z:\svoasrv\HPCHEM1\BNA\_N\Methods\8270-SIM-BN010225.M  
 Quant Title : ASP BNA STANDARDS FOR 5 POINT CALIBRATION  
 QLast Update : Thu Jan 02 15:39:17 2025  
 Response via : Initial Calibration



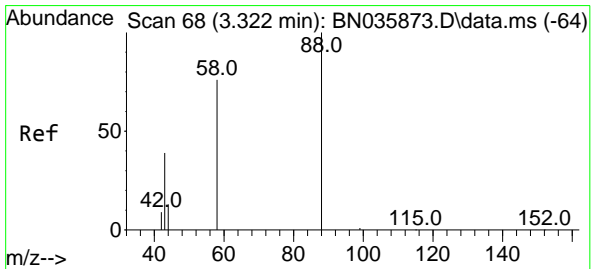
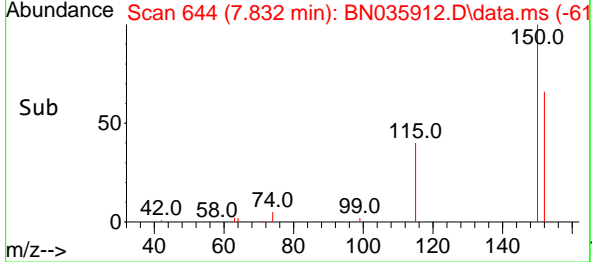
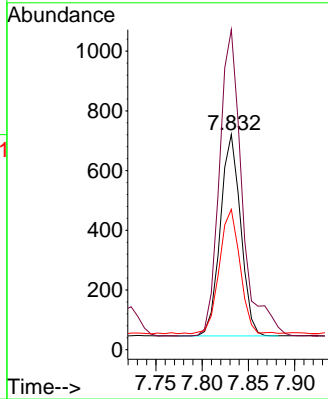


#1  
 1,4-Dichlorobenzene-d4  
 Concen: 0.400 ng  
 RT: 7.832 min Scan# 64  
 Delta R.T. -0.004 min  
 Lab File: BN035912.D  
 Acq: 10 Jan 2025 21:20

Instrument :  
 BNA\_N  
 ClientSampleId :  
 SSTDCCC0.4EC

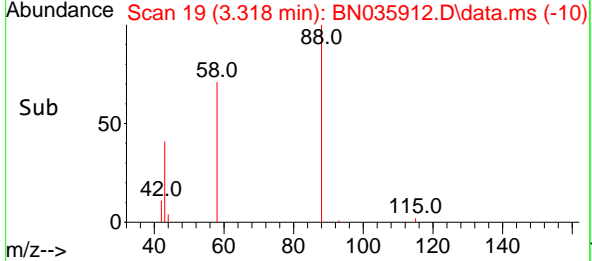
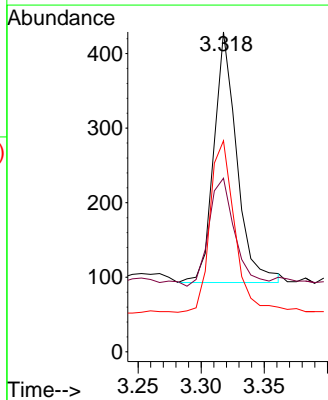
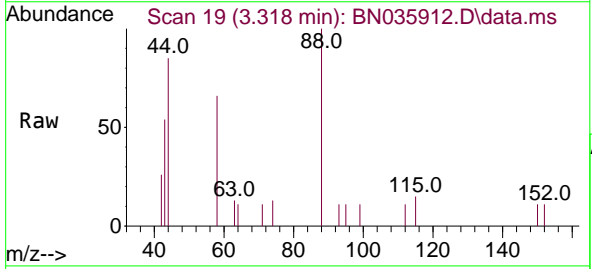


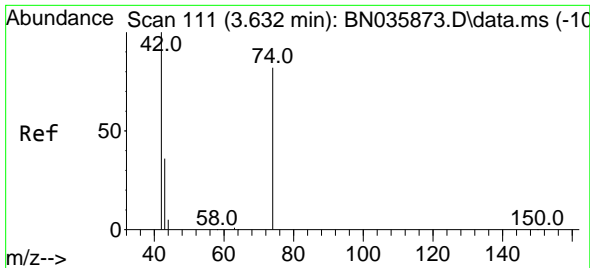
Tgt Ion:152 Resp: 1033  
 Ion Ratio Lower Upper  
 152 100  
 150 148.7 117.8 176.6  
 115 65.2 51.0 76.4



#2  
 1,4-Dioxane  
 Concen: 0.413 ng  
 RT: 3.318 min Scan# 19  
 Delta R.T. -0.004 min  
 Lab File: BN035912.D  
 Acq: 10 Jan 2025 21:20

Tgt Ion: 88 Resp: 424  
 Ion Ratio Lower Upper  
 88 100  
 43 49.3 32.7 49.1#  
 58 73.8 63.0 94.4

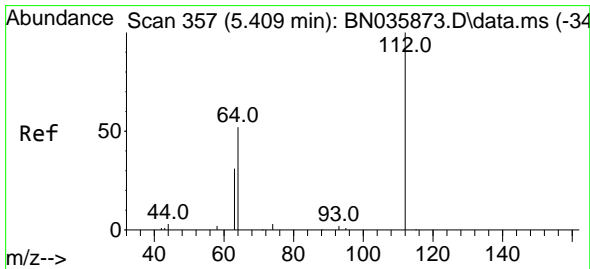
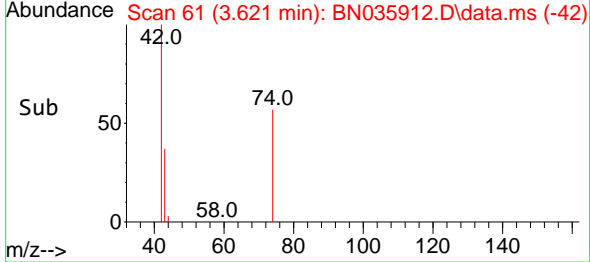
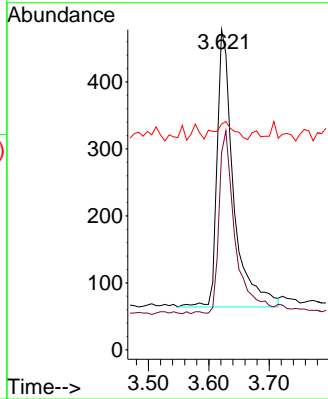
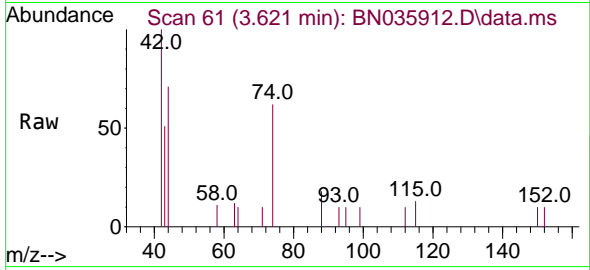




#3  
 n-Nitrosodimethylamine  
 Concen: 0.439 ng  
 RT: 3.621 min Scan# 61  
 Delta R.T. -0.011 min  
 Lab File: BN035912.D  
 Acq: 10 Jan 2025 21:20

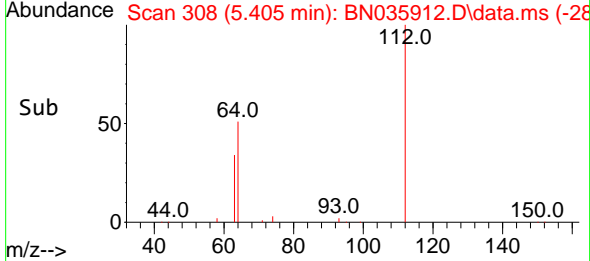
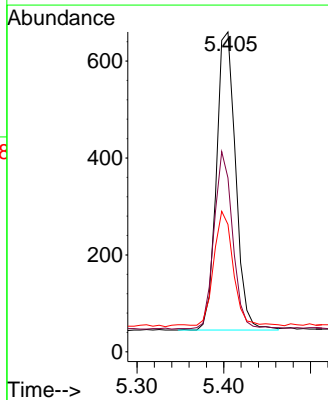
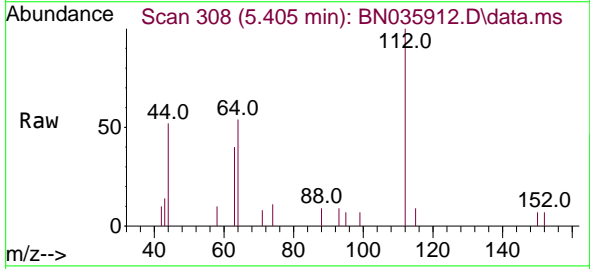
Instrument :  
 BNA\_N  
 ClientSampleId :  
 SSTDCCC0.4EC

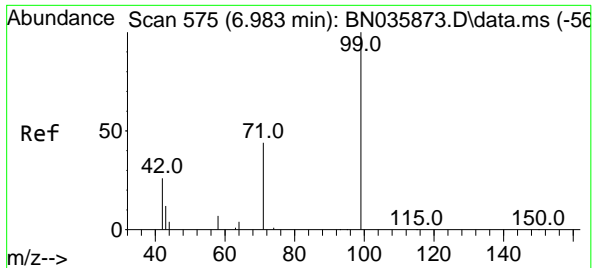
Tgt Ion	Resp	Lower	Upper
42	100		
74	64.1	62.2	93.2
44	7.3	7.1	10.7



#4  
 2-Fluorophenol  
 Concen: 0.373 ng  
 RT: 5.405 min Scan# 308  
 Delta R.T. -0.004 min  
 Lab File: BN035912.D  
 Acq: 10 Jan 2025 21:20

Tgt Ion	Resp	Lower	Upper
112	100		
64	57.4	48.2	72.2
63	38.6	30.0	45.0



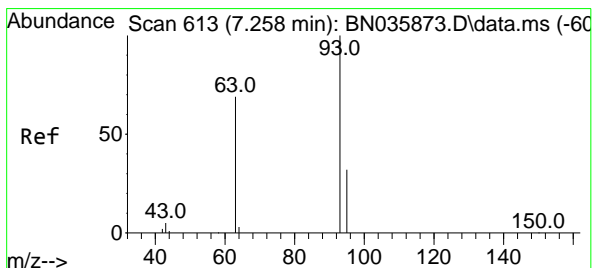
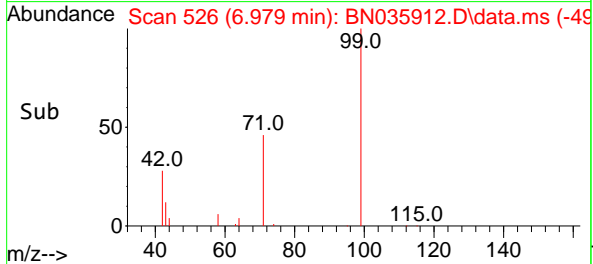
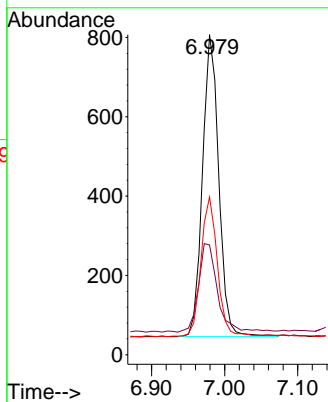
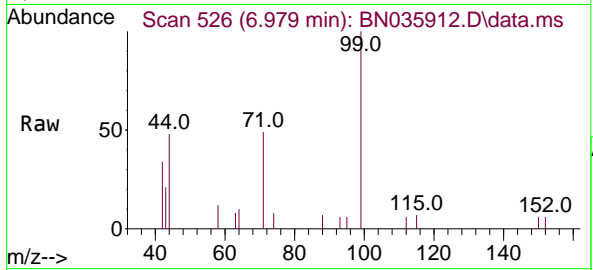


#5  
 Phenol-d6  
 Concen: 0.373 ng  
 RT: 6.979 min Scan# 511  
 Delta R.T. -0.004 min  
 Lab File: BN035912.D  
 Acq: 10 Jan 2025 21:20

Instrument :  
 BNA\_N  
 ClientSampleId :  
 SSTDCCC0.4EC

Tgt Ion: 99 Resp: 1174

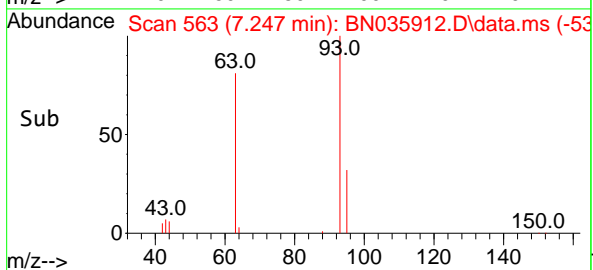
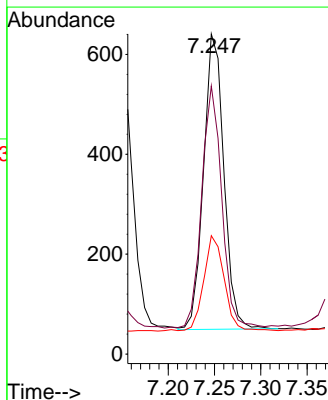
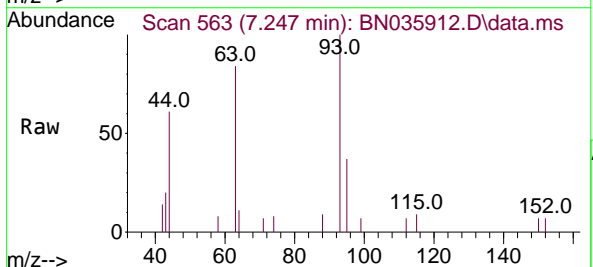
Ion	Ratio	Lower	Upper
99	100		
42	34.8	23.5	35.3
71	46.7	35.5	53.3

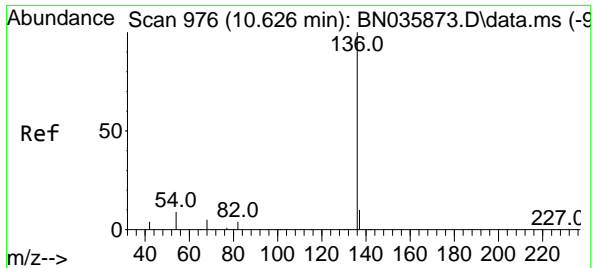


#6  
 bis(2-Chloroethyl)ether  
 Concen: 0.376 ng  
 RT: 7.247 min Scan# 563  
 Delta R.T. -0.011 min  
 Lab File: BN035912.D  
 Acq: 10 Jan 2025 21:20

Tgt Ion: 93 Resp: 901

Ion	Ratio	Lower	Upper
93	100		
63	81.1	62.0	93.0
95	33.1	25.5	38.3



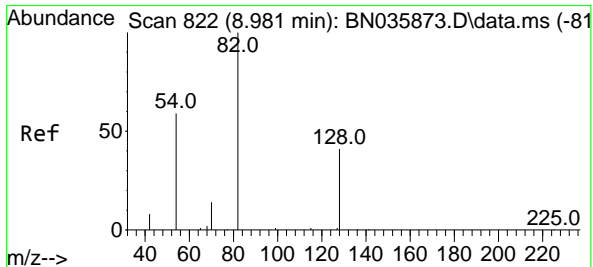
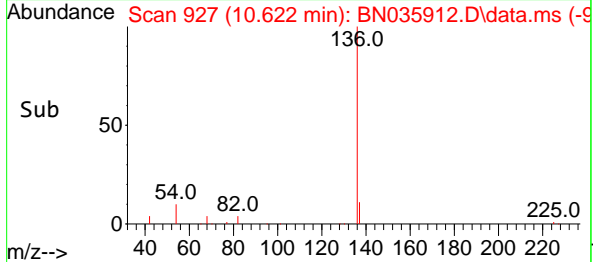
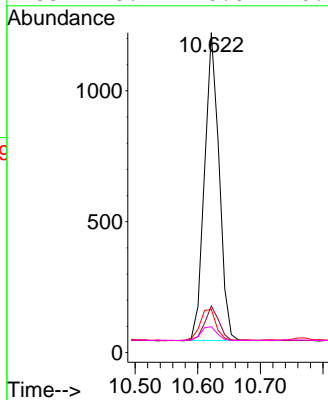
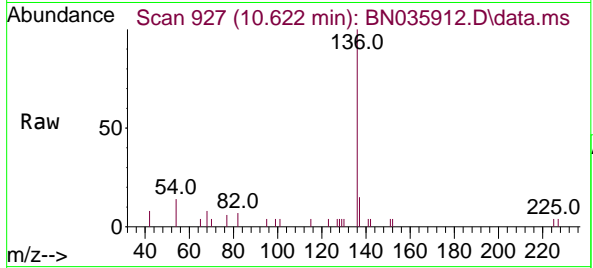


#7  
 Naphthalene-d8  
 Concen: 0.400 ng  
 RT: 10.622 min Scan# 91  
 Delta R.T. -0.004 min  
 Lab File: BN035912.D  
 Acq: 10 Jan 2025 21:20

Instrument :  
 BNA\_N  
 ClientSampleId :  
 SSTDCCC0.4EC

Tgt Ion:136 Resp: 1896

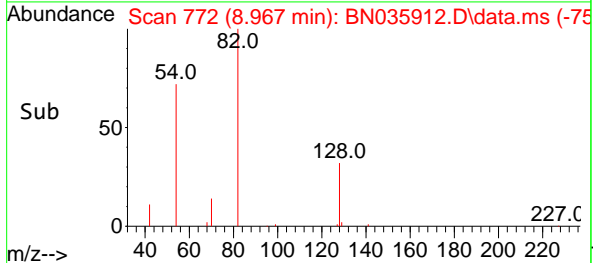
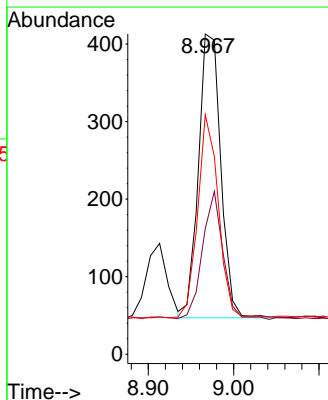
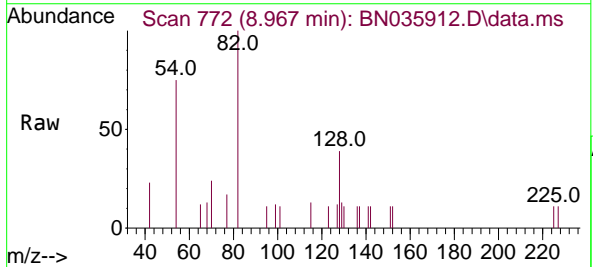
Ion	Ratio	Lower	Upper
136	100		
137	14.6	10.6	15.8
54	13.5	9.8	14.6
68	8.1	6.6	10.0

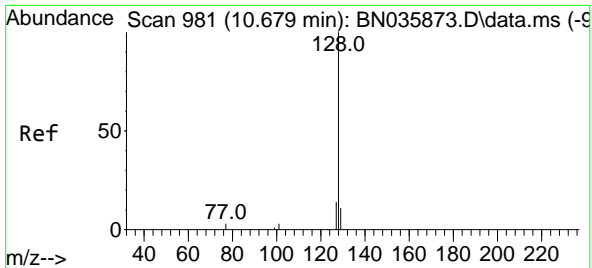


#8  
 Nitrobenzene-d5  
 Concen: 0.444 ng  
 RT: 8.967 min Scan# 772  
 Delta R.T. -0.015 min  
 Lab File: BN035912.D  
 Acq: 10 Jan 2025 21:20

Tgt Ion: 82 Resp: 666

Ion	Ratio	Lower	Upper
82	100		
128	39.2	36.9	55.3
54	74.8	50.4	75.6



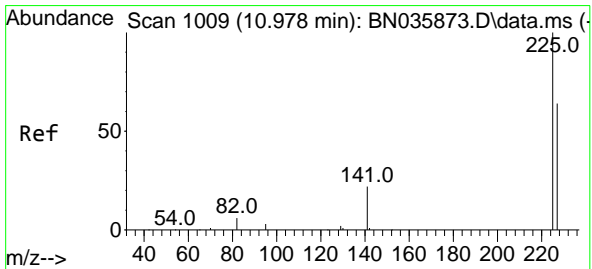
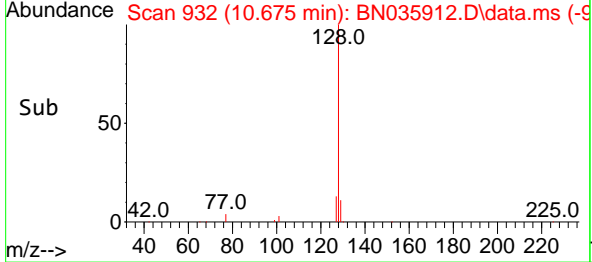
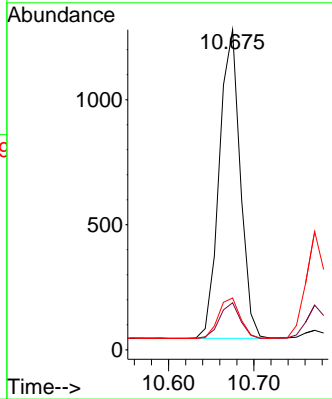
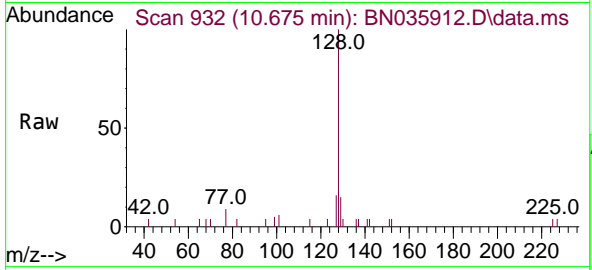


#9  
 Naphthalene  
 Concen: 0.395 ng  
 RT: 10.675 min Scan# 91  
 Delta R.T. -0.004 min  
 Lab File: BN035912.D  
 Acq: 10 Jan 2025 21:20

Instrument : BNA\_N  
 ClientSampleId : SSTDCCC0.4EC

Tgt Ion:128 Resp: 2101

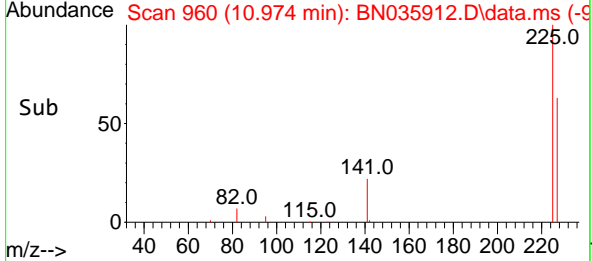
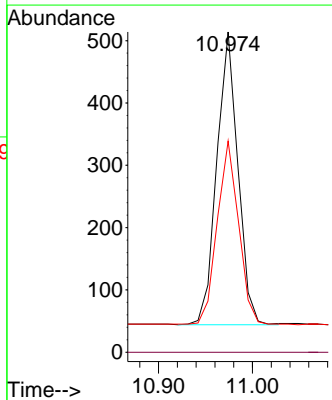
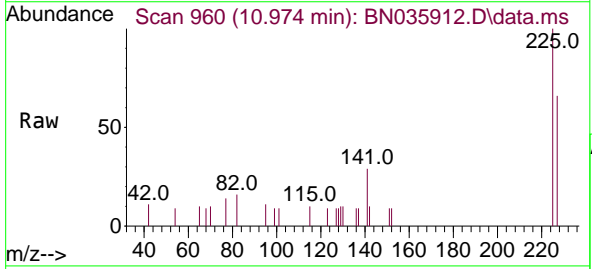
Ion	Ratio	Lower	Upper
128	100		
129	14.7	10.6	16.0
127	16.2	12.8	19.2

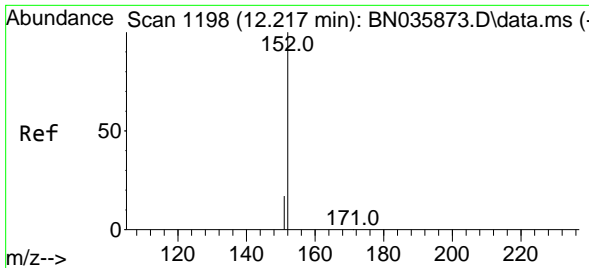


#10  
 Hexachlorobutadiene  
 Concen: 0.425 ng  
 RT: 10.974 min Scan# 960  
 Delta R.T. -0.004 min  
 Lab File: BN035912.D  
 Acq: 10 Jan 2025 21:20

Tgt Ion:225 Resp: 735

Ion	Ratio	Lower	Upper
225	100		
223	0.0	0.0	0.0
227	63.9	51.5	77.3



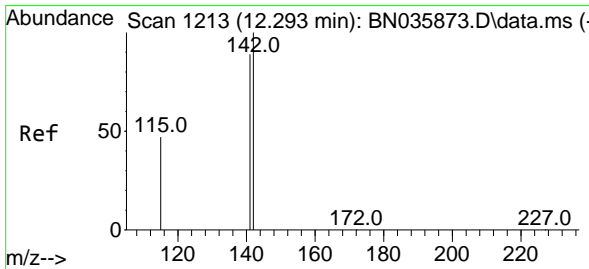
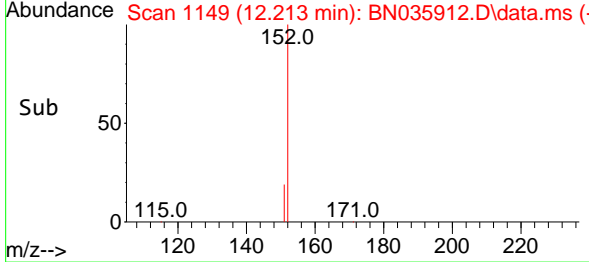
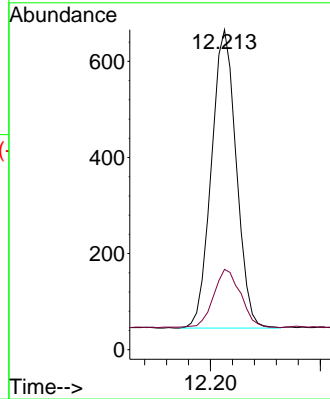
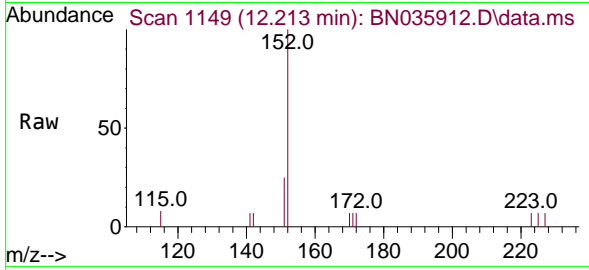


#11  
 2-Methylnaphthalene-d10  
 Concen: 0.385 ng  
 RT: 12.213 min Scan# 1163  
 Delta R.T. -0.004 min  
 Lab File: BN035912.D  
 Acq: 10 Jan 2025 21:20

Instrument : BNA\_N  
 ClientSampleId : SSTDCCC0.4EC

Tgt Ion:152 Resp: 977

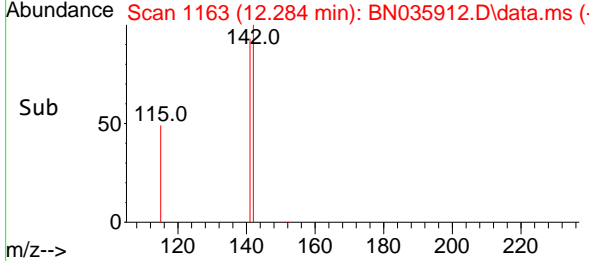
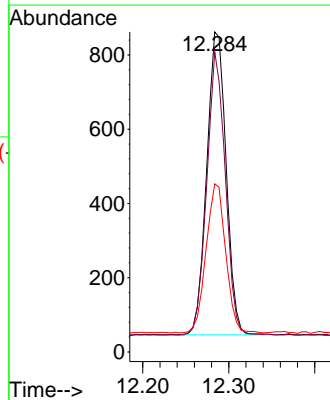
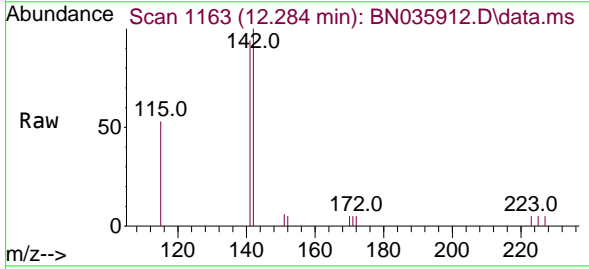
Ion	Ratio	Lower	Upper
152	100		
151	21.4	17.0	25.6



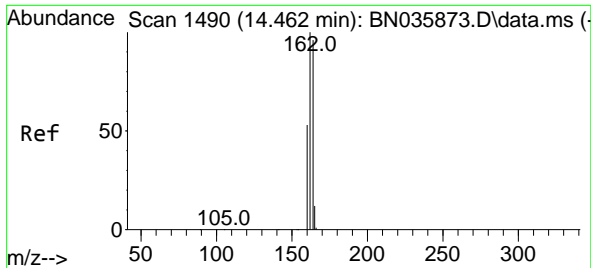
#12  
 2-Methylnaphthalene  
 Concen: 0.389 ng  
 RT: 12.284 min Scan# 1163  
 Delta R.T. -0.009 min  
 Lab File: BN035912.D  
 Acq: 10 Jan 2025 21:20

Tgt Ion:142 Resp: 1282

Ion	Ratio	Lower	Upper
142	100		
141	93.7	71.9	107.9
115	52.6	39.6	59.4





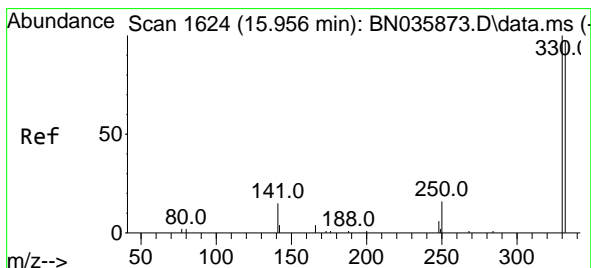
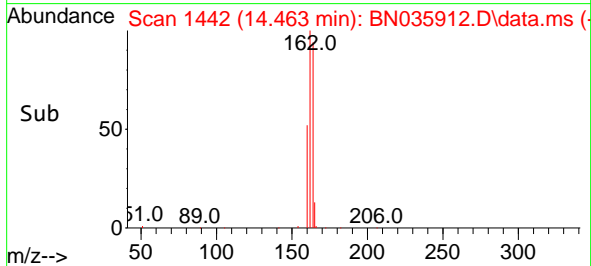
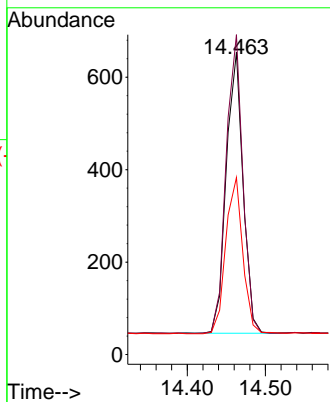
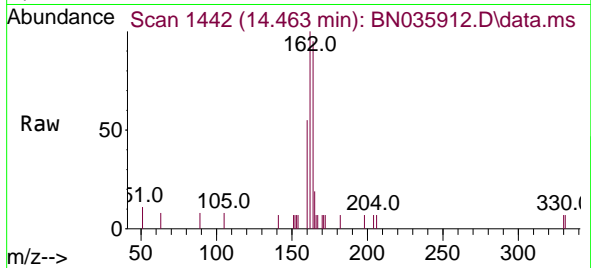


#13  
 Acenaphthene-d10  
 Concen: 0.400 ng  
 RT: 14.463 min Scan# 14  
 Delta R.T. 0.001 min  
 Lab File: BN035912.D  
 Acq: 10 Jan 2025 21:20

Instrument :  
 BNA\_N  
 ClientSampleId :  
 SSTDCCC0.4EC

Tgt Ion:164 Resp: 908

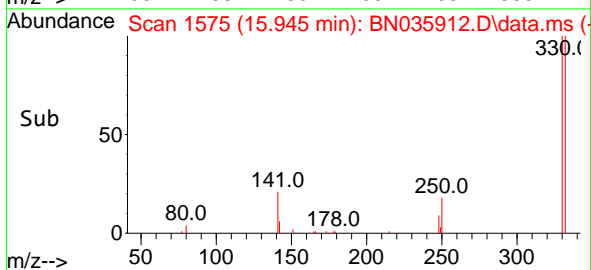
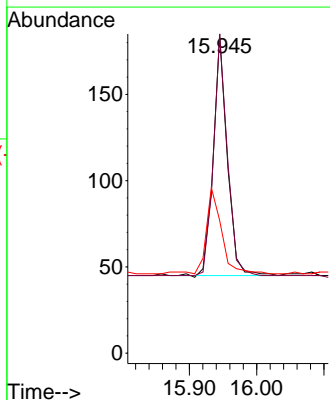
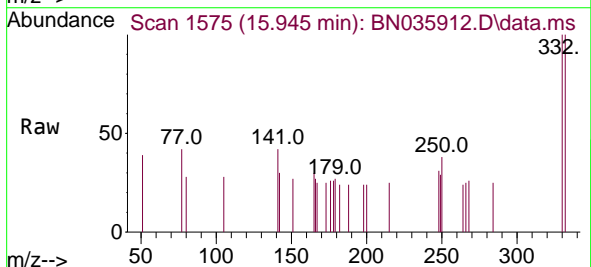
Ion	Ratio	Lower	Upper
164	100		
162	105.8	83.1	124.7
160	58.6	46.0	69.0

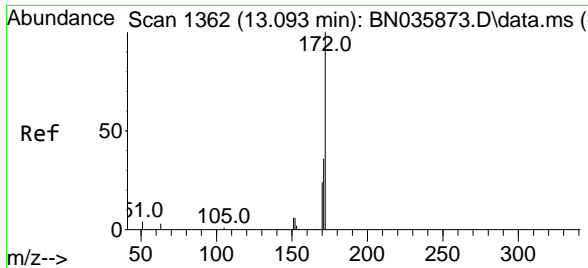


#14  
 2,4,6-Tribromophenol  
 Concen: 0.459 ng  
 RT: 15.945 min Scan# 1575  
 Delta R.T. -0.011 min  
 Lab File: BN035912.D  
 Acq: 10 Jan 2025 21:20

Tgt Ion:330 Resp: 200

Ion	Ratio	Lower	Upper
330	100		
332	99.0	77.2	115.8
141	42.5	31.6	47.4

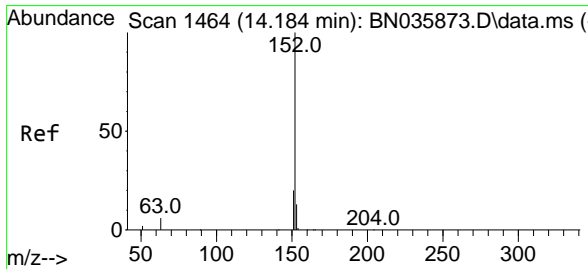
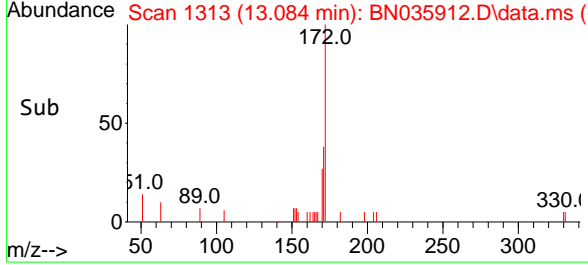
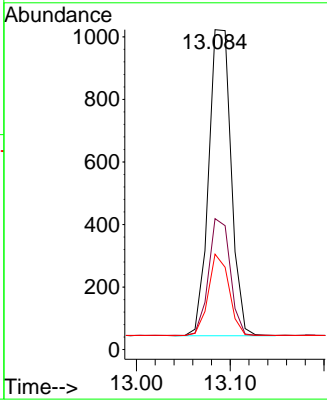
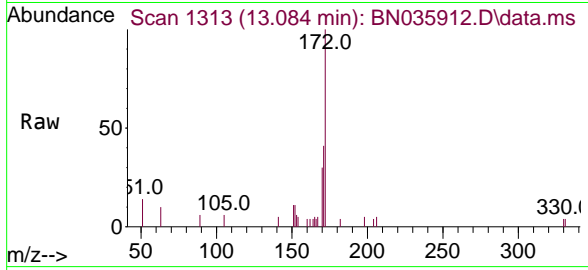




#15  
 2-Fluorobiphenyl  
 Concen: 0.410 ng  
 RT: 13.084 min Scan# 11  
 Delta R.T. -0.010 min  
 Lab File: BN035912.D  
 Acq: 10 Jan 2025 21:20

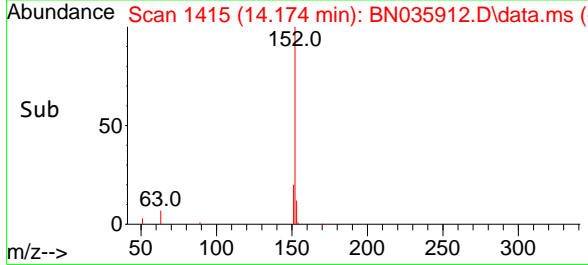
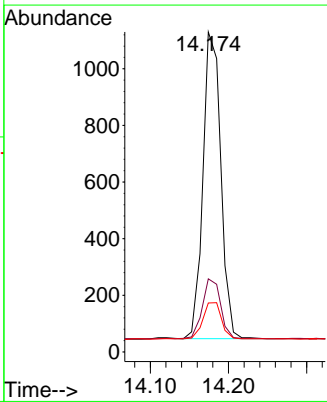
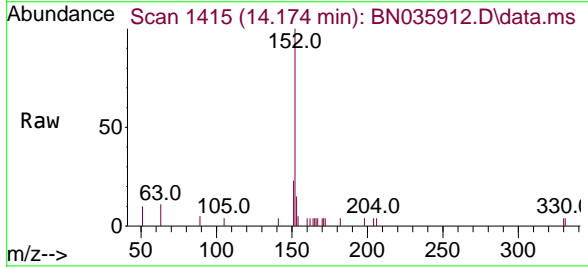
Instrument : BNA\_N  
 ClientSampleId : SSTDCCC0.4EC

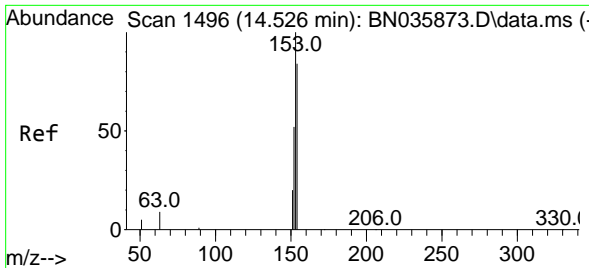
Tgt Ion	Resp	Lower	Upper
172	1635		
171	41.0	30.5	45.7
170	29.8	20.8	31.2



#16  
 Acenaphthylene  
 Concen: 0.402 ng  
 RT: 14.174 min Scan# 1415  
 Delta R.T. -0.010 min  
 Lab File: BN035912.D  
 Acq: 10 Jan 2025 21:20

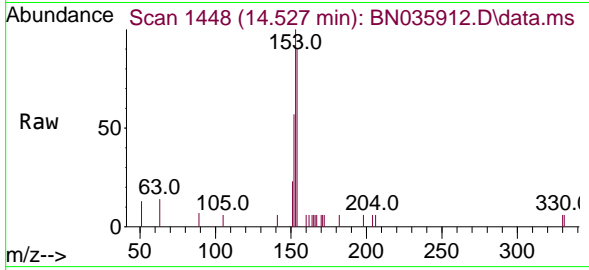
Tgt Ion	Resp	Lower	Upper
152	1721		
151	20.5	16.3	24.5
153	13.0	10.6	15.8



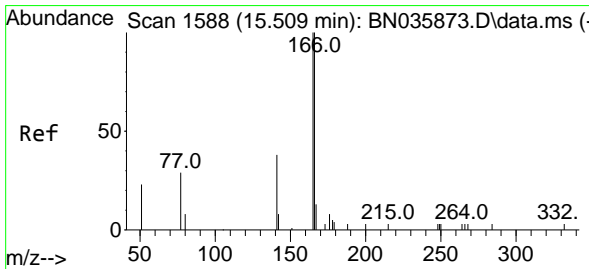
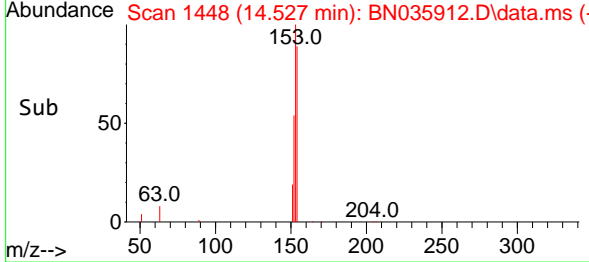
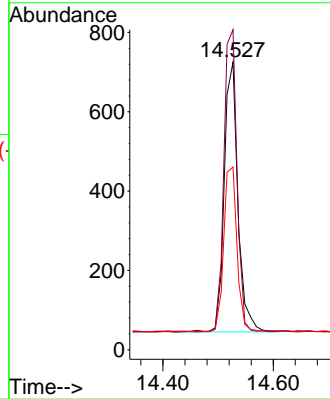


#17  
 Acenaphthene  
 Concen: 0.418 ng  
 RT: 14.527 min Scan# 14  
 Delta R.T. 0.001 min  
 Lab File: BN035912.D  
 Acq: 10 Jan 2025 21:20

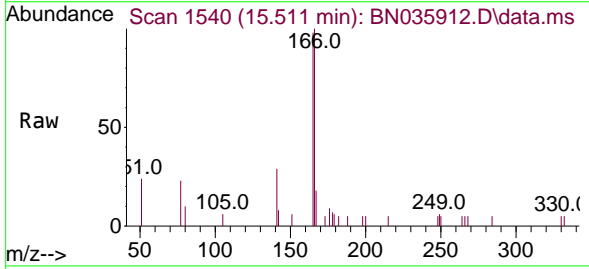
Instrument :  
 BNA\_N  
 ClientSampleId :  
 SSTDCCC0.4EC



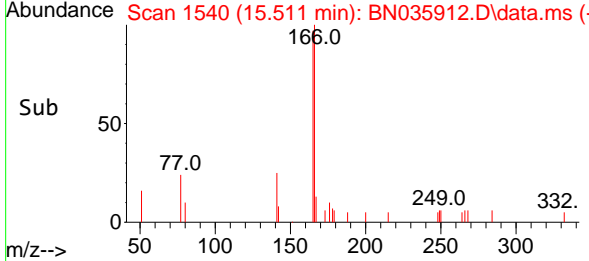
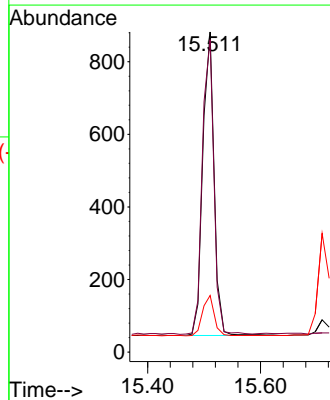
Tgt Ion:154 Resp: 1171  
 Ion Ratio Lower Upper  
 154 100  
 153 107.0 90.5 135.7  
 152 58.8 48.6 73.0

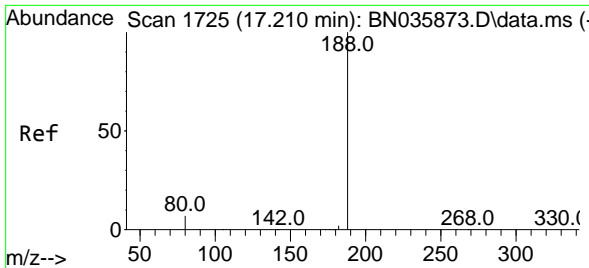


#18  
 Fluorene  
 Concen: 0.394 ng  
 RT: 15.511 min Scan# 1540  
 Delta R.T. 0.001 min  
 Lab File: BN035912.D  
 Acq: 10 Jan 2025 21:20



Tgt Ion:166 Resp: 1214  
 Ion Ratio Lower Upper  
 166 100  
 165 97.8 80.6 120.8  
 167 14.3 11.4 17.0



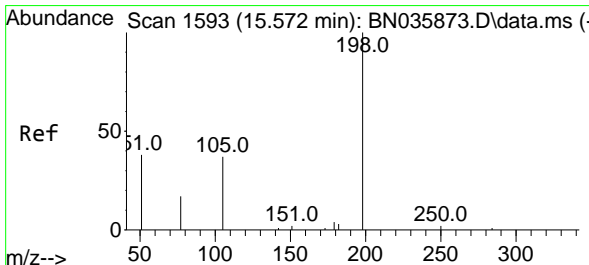
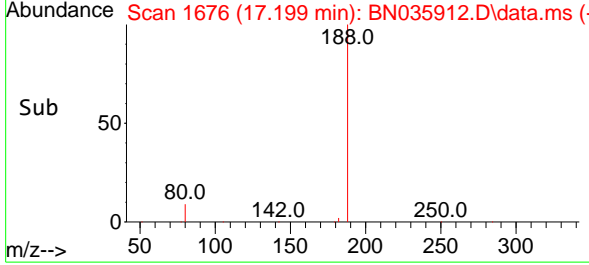
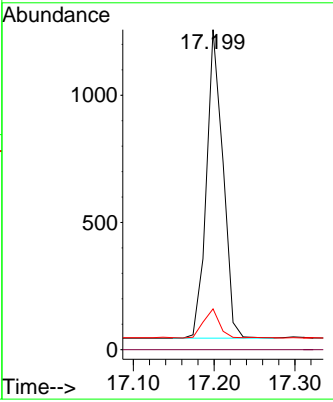
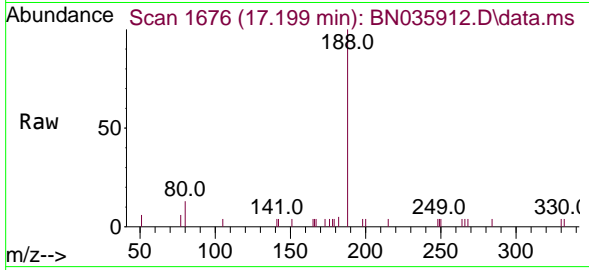


#19  
 Phenanthrene-d10  
 Concen: 0.400 ng  
 RT: 17.199 min Scan# 11  
 Delta R.T. -0.011 min  
 Lab File: BN035912.D  
 Acq: 10 Jan 2025 21:20

Instrument : BNA\_N  
 ClientSampleId : SSTDCCC0.4EC

Tgt Ion:188 Resp: 1715

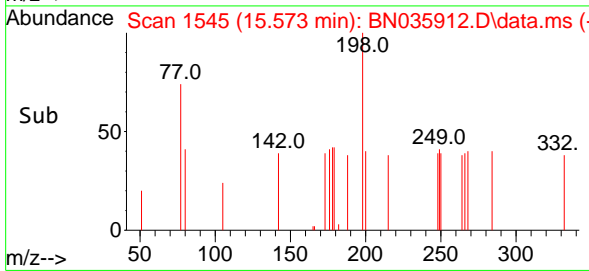
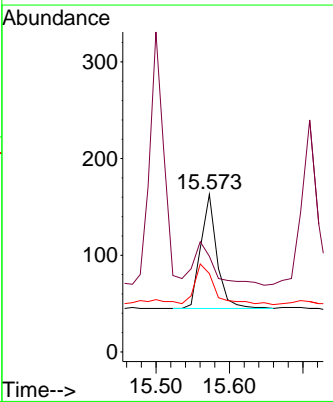
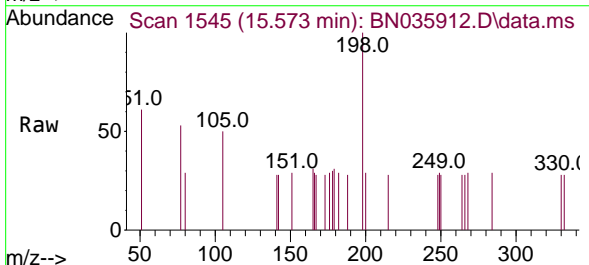
Ion	Ratio	Lower	Upper
188	100		
94	0.0	0.0	0.0
80	12.7	7.3	10.9#

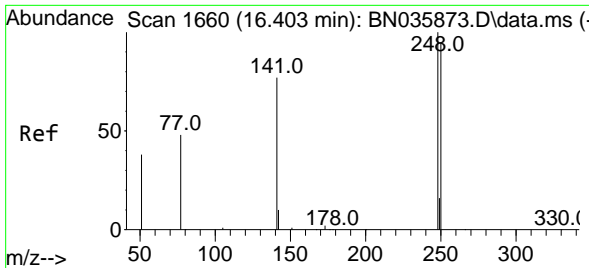


#20  
 4,6-Dinitro-2-methylphenol  
 Concen: 0.604 ng  
 RT: 15.573 min Scan# 1545  
 Delta R.T. 0.001 min  
 Lab File: BN035912.D  
 Acq: 10 Jan 2025 21:20

Tgt Ion:198 Resp: 180

Ion	Ratio	Lower	Upper
198	100		
51	60.7	64.3	96.5#
105	49.7	50.0	75.0#

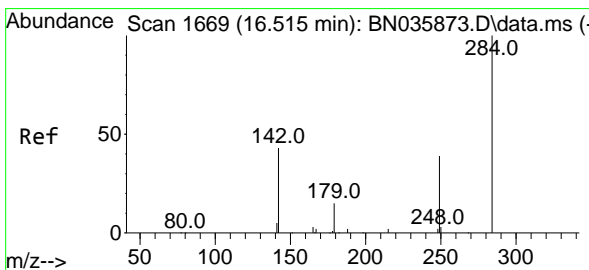
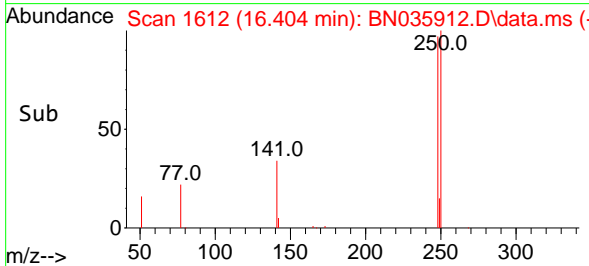
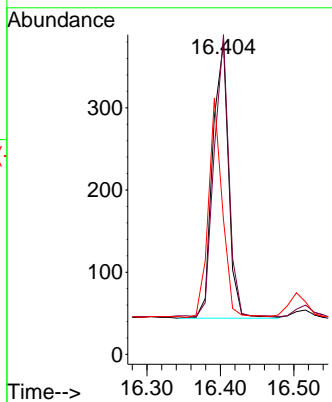
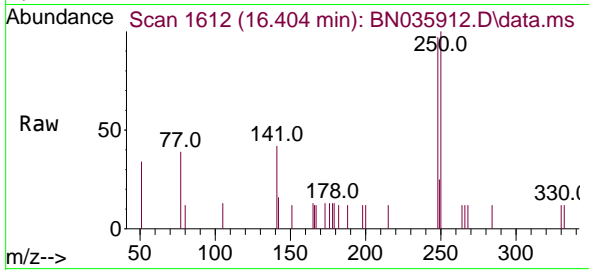




#21  
 4-Bromophenyl-phenylether  
 Concen: 0.429 ng  
 RT: 16.404 min Scan# 1612  
 Delta R.T. 0.001 min  
 Lab File: BN035912.D  
 Acq: 10 Jan 2025 21:20

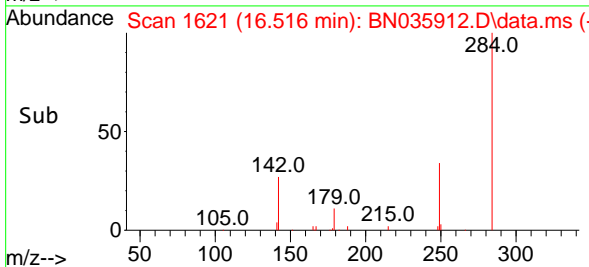
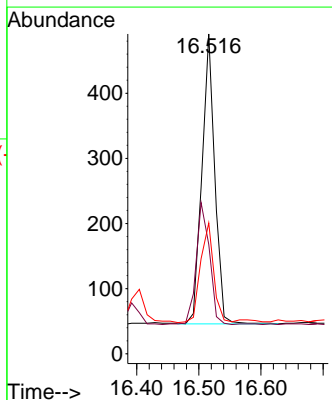
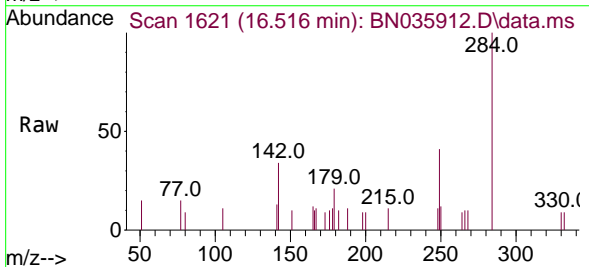
Instrument :  
 BNA\_N  
 ClientSampleId :  
 SSTDCCC0.4EC

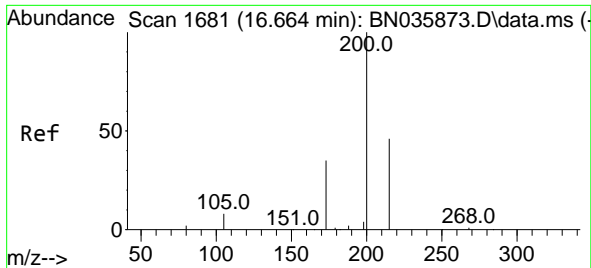
Tgt Ion	Resp	Lower	Upper
248	100		
250	102.6	76.8	115.2
141	43.3	63.6	95.4



#22  
 Hexachlorobenzene  
 Concen: 0.401 ng  
 RT: 16.516 min Scan# 1621  
 Delta R.T. 0.001 min  
 Lab File: BN035912.D  
 Acq: 10 Jan 2025 21:20

Tgt Ion	Resp	Lower	Upper
284	100		
142	43.4	31.4	47.0
249	35.1	27.8	41.8



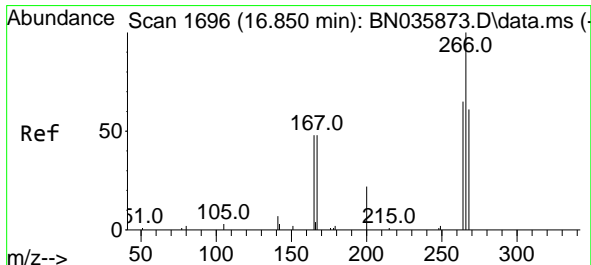
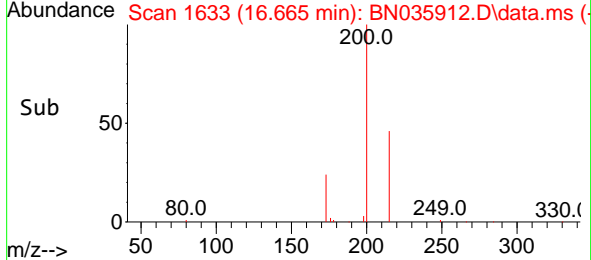
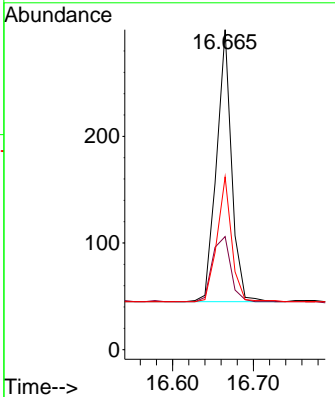
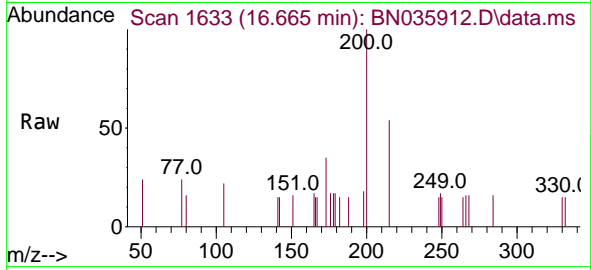


#23  
 Atrazine  
 Concen: 0.418 ng  
 RT: 16.665 min Scan# 1633  
 Delta R.T. 0.001 min  
 Lab File: BN035912.D  
 Acq: 10 Jan 2025 21:20

Instrument : BNA\_N  
 ClientSampleId : SSTDCCC0.4EC

Tgt Ion:200 Resp: 330

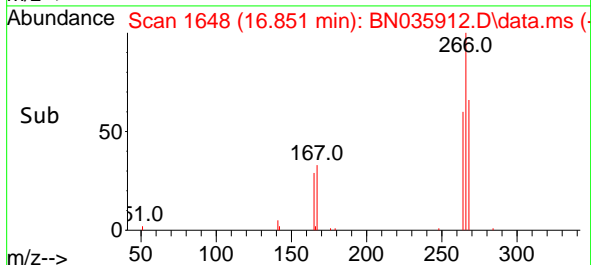
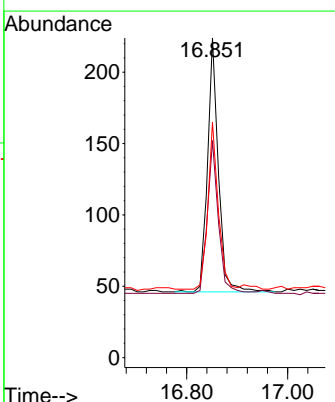
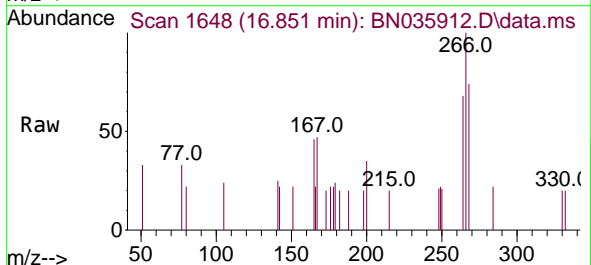
Ion	Ratio	Lower	Upper
200	100		
173	35.3	35.4	53.0#
215	54.0	42.4	63.6

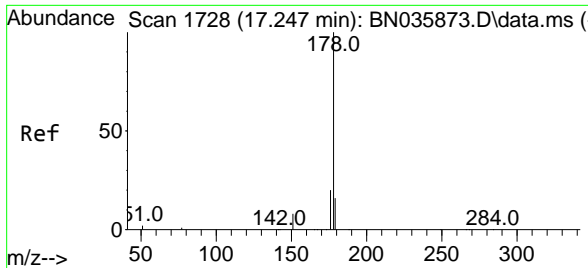


#24  
 Pentachlorophenol  
 Concen: 0.470 ng  
 RT: 16.851 min Scan# 1648  
 Delta R.T. 0.001 min  
 Lab File: BN035912.D  
 Acq: 10 Jan 2025 21:20

Tgt Ion:266 Resp: 267

Ion	Ratio	Lower	Upper
266	100		
264	60.7	49.9	74.9
268	64.0	50.2	75.2

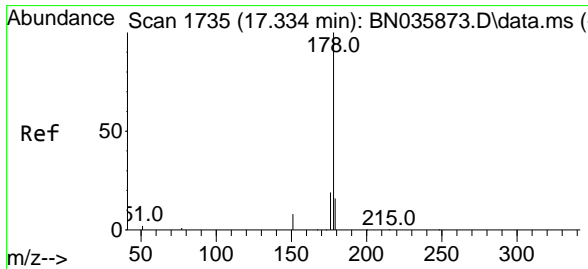
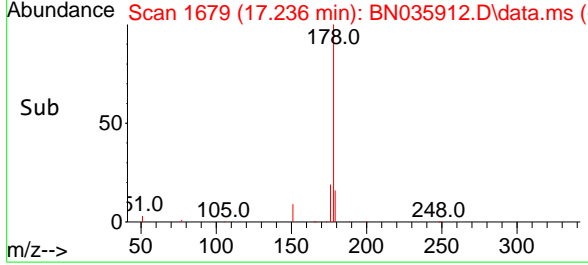
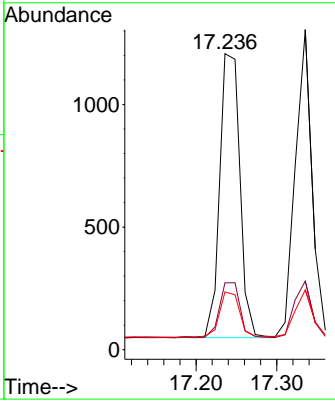
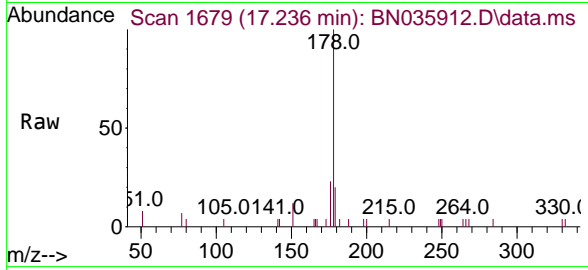




#25  
 Phenanthrene  
 Concen: 0.403 ng  
 RT: 17.236 min Scan# 1687  
 Delta R.T. -0.011 min  
 Lab File: BN035912.D  
 Acq: 10 Jan 2025 21:20

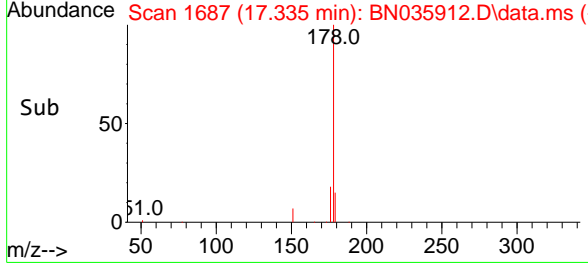
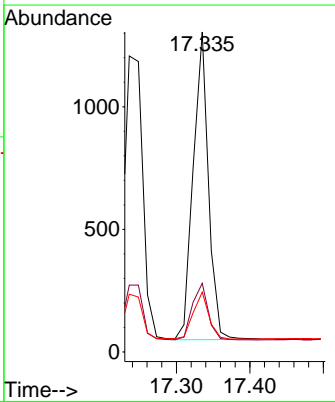
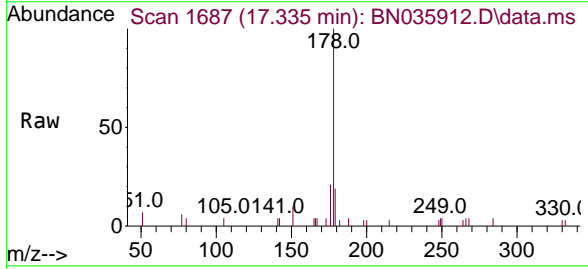
Instrument : BNA\_N  
 ClientSampleId : SSTDCCC0.4EC

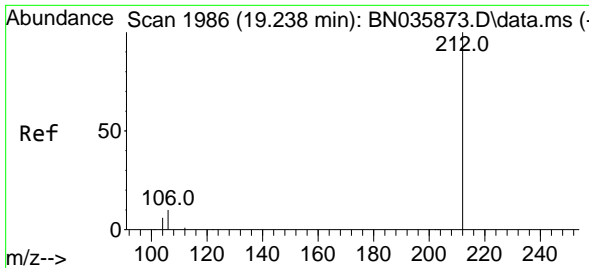
Tgt Ion	Resp	Lower	Upper
178	100		
176	19.8	15.9	23.9
179	15.8	12.9	19.3



#26  
 Anthracene  
 Concen: 0.397 ng  
 RT: 17.335 min Scan# 1687  
 Delta R.T. 0.001 min  
 Lab File: BN035912.D  
 Acq: 10 Jan 2025 21:20

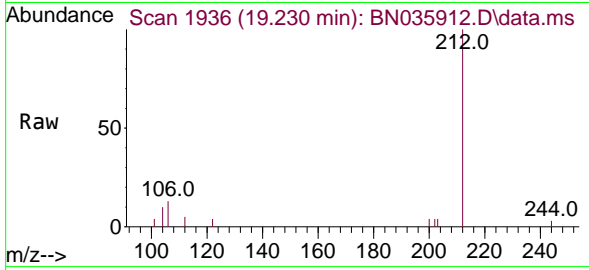
Tgt Ion	Resp	Lower	Upper
178	100		
176	19.3	15.0	22.6
179	15.6	13.0	19.6



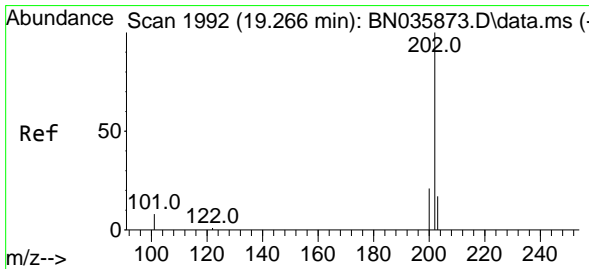
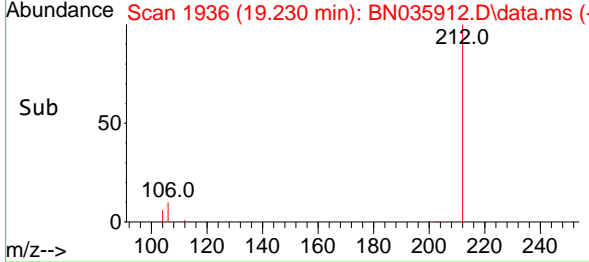
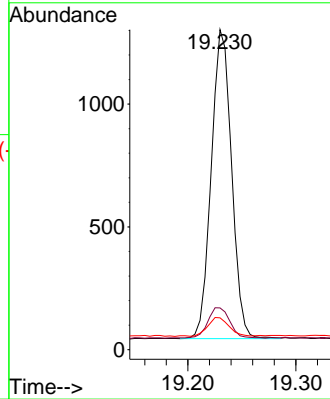


#27  
 Fluoranthene-d10  
 Concen: 0.387 ng  
 RT: 19.230 min Scan# 1943  
 Delta R.T. -0.008 min  
 Lab File: BN035912.D  
 Acq: 10 Jan 2025 21:20

Instrument :  
 BNA\_N  
 ClientSampleId :  
 SSTDCCC0.4EC

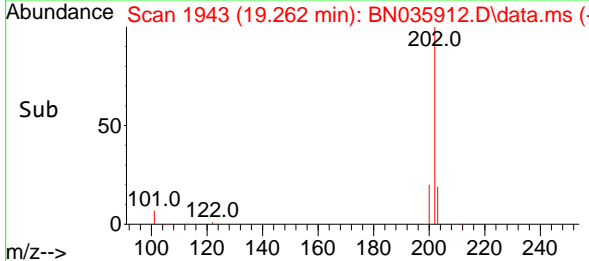
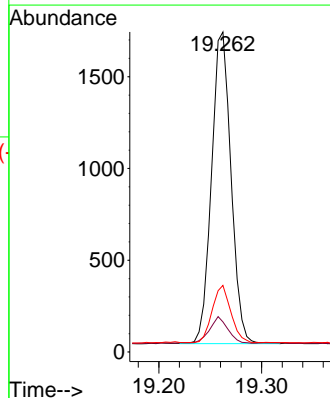
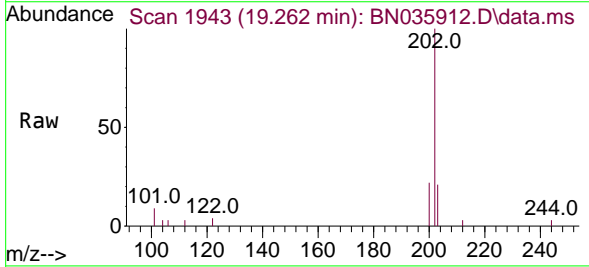


Tgt Ion:212 Resp: 1648  
 Ion Ratio Lower Upper  
 212 100  
 106 10.7 9.0 13.6  
 104 6.6 5.4 8.2

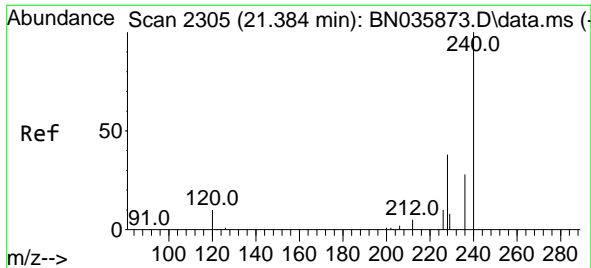


#28  
 Fluoranthene  
 Concen: 0.382 ng  
 RT: 19.262 min Scan# 1943  
 Delta R.T. -0.004 min  
 Lab File: BN035912.D  
 Acq: 10 Jan 2025 21:20

Tgt Ion:202 Resp: 2230  
 Ion Ratio Lower Upper  
 202 100  
 101 8.3 7.2 10.8  
 203 17.7 13.9 20.9





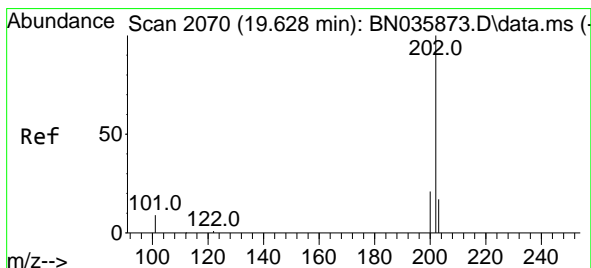
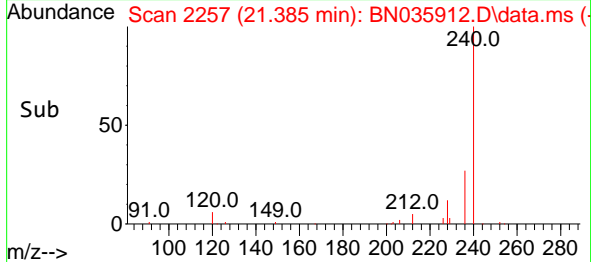
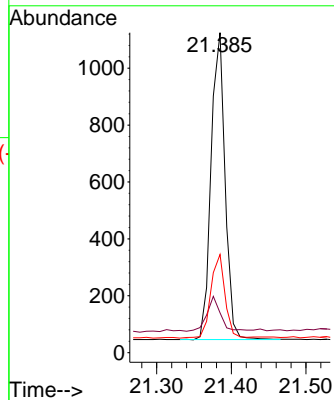
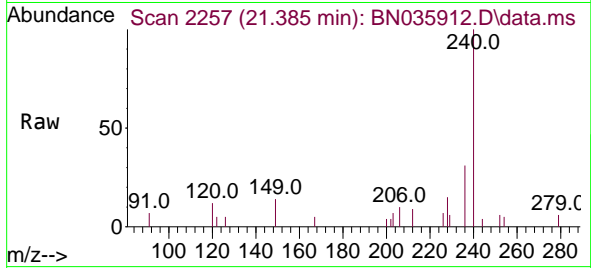


#29  
 Chrysene-d12  
 Concen: 0.400 ng  
 RT: 21.385 min Scan# 21  
 Delta R.T. 0.001 min  
 Lab File: BN035912.D  
 Acq: 10 Jan 2025 21:20

Instrument :  
 BNA\_N  
 ClientSampleId :  
 SSTDCCC0.4EC

Tgt Ion:240 Resp: 1402

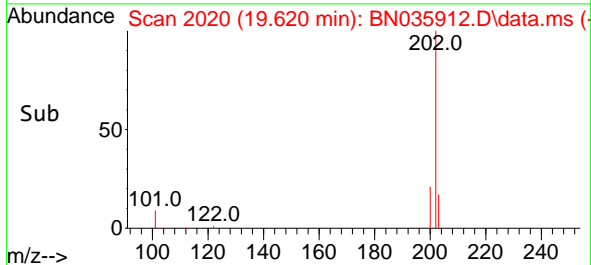
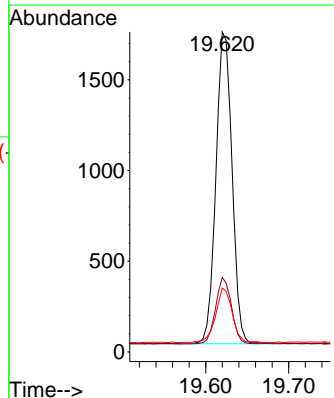
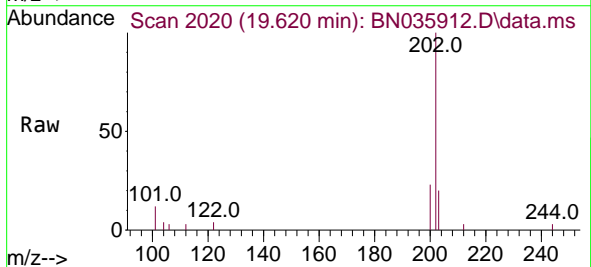
Ion	Ratio	Lower	Upper
240	100		
120	12.4	11.1	16.7
236	30.7	24.6	36.8

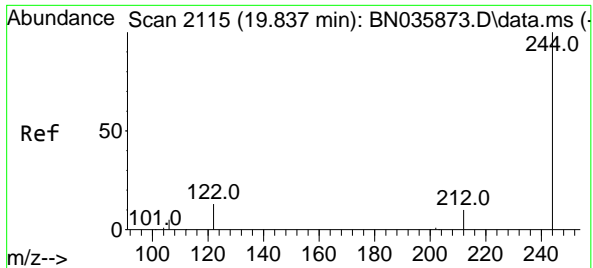


#30  
 Pyrene  
 Concen: 0.406 ng  
 RT: 19.620 min Scan# 2020  
 Delta R.T. -0.008 min  
 Lab File: BN035912.D  
 Acq: 10 Jan 2025 21:20

Tgt Ion:202 Resp: 2313

Ion	Ratio	Lower	Upper
202	100		
200	20.8	17.0	25.6
203	17.8	14.6	22.0



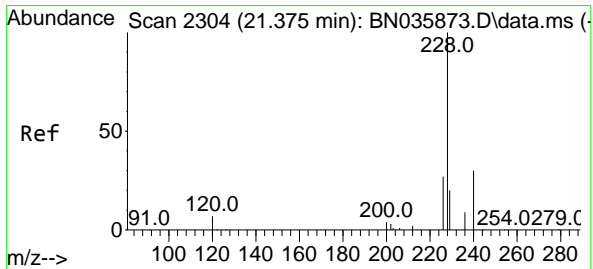
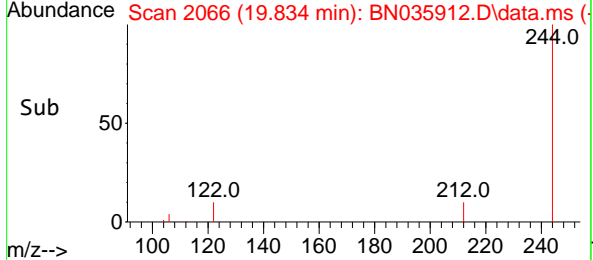
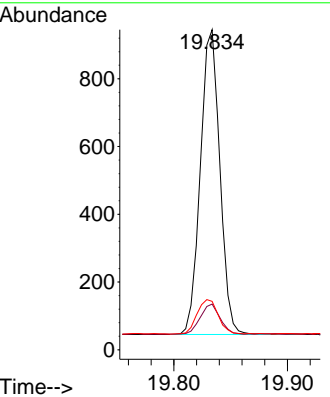
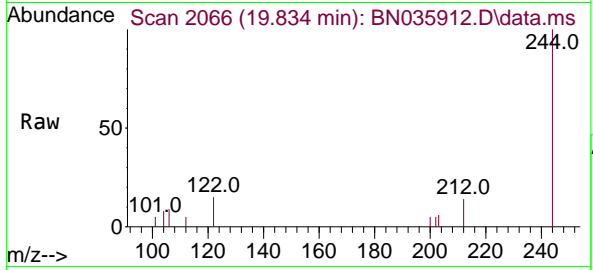


#31  
 Terphenyl-d14  
 Concen: 0.384 ng  
 RT: 19.834 min Scan# 2066  
 Delta R.T. -0.004 min  
 Lab File: BN035912.D  
 Acq: 10 Jan 2025 21:20

Instrument : BNA\_N  
 ClientSampleId : SSTDCCC0.4EC

Tgt Ion:244 Resp: 1072

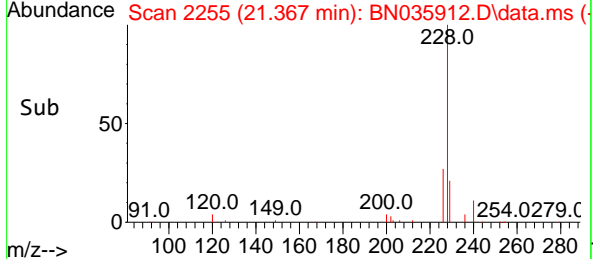
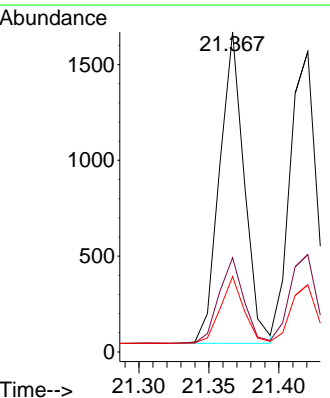
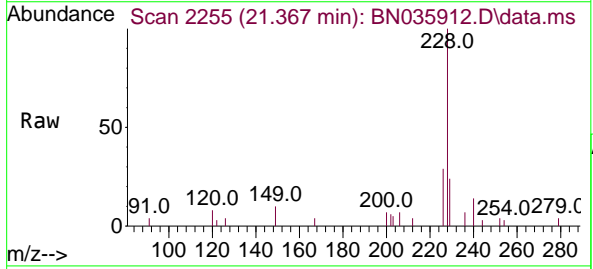
Ion	Ratio	Lower	Upper
244	100		
212	14.3	10.1	15.1
122	15.1	12.2	18.4

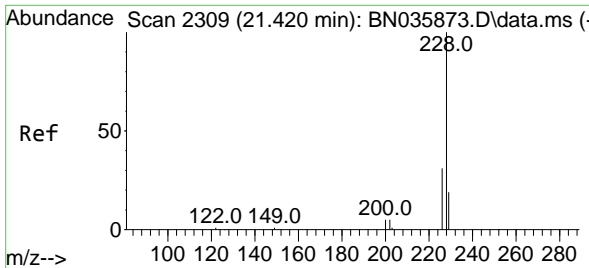


#32  
 Benzo(a)anthracene  
 Concen: 0.403 ng  
 RT: 21.367 min Scan# 2255  
 Delta R.T. -0.008 min  
 Lab File: BN035912.D  
 Acq: 10 Jan 2025 21:20

Tgt Ion:228 Resp: 1990

Ion	Ratio	Lower	Upper
228	100		
226	29.5	22.7	34.1
229	23.5	17.1	25.7



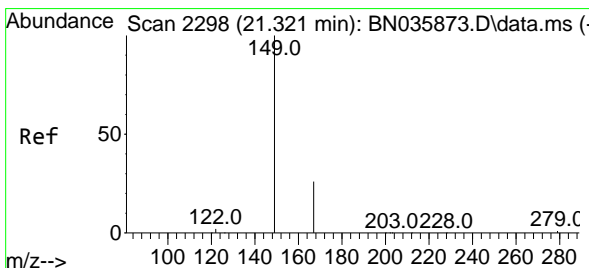
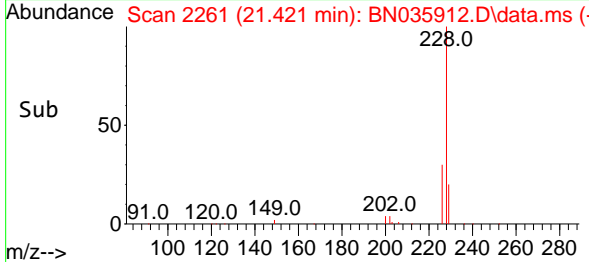
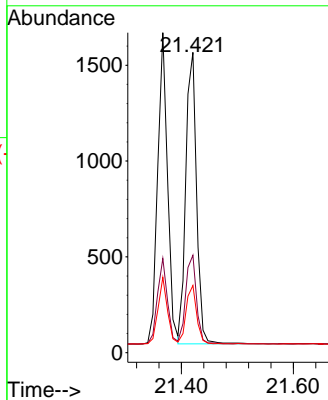
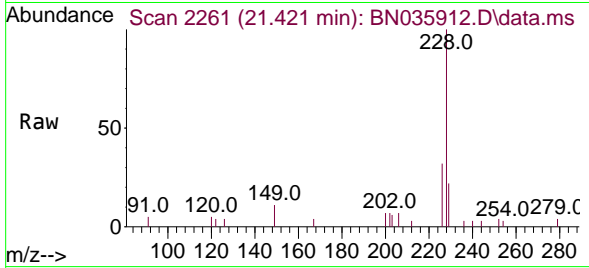


#33  
 Chrysene  
 Concen: 0.393 ng  
 RT: 21.421 min Scan# 21  
 Delta R.T. 0.001 min  
 Lab File: BN035912.D  
 Acq: 10 Jan 2025 21:20

Instrument :  
 BNA\_N  
 ClientSampleId :  
 SSTDCCC0.4EC

Tgt Ion:228 Resp: 2033

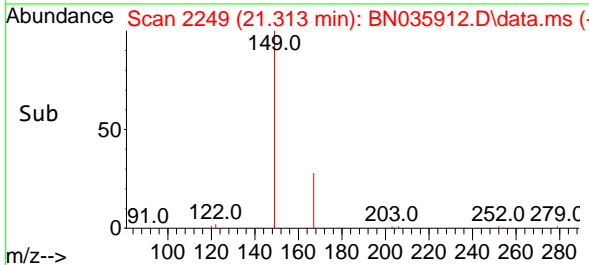
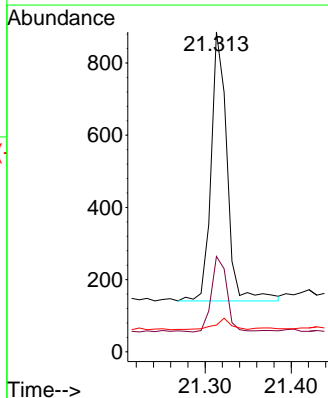
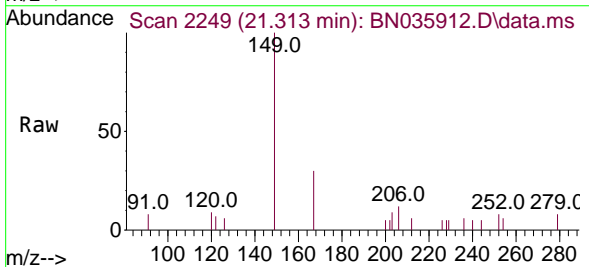
Ion	Ratio	Lower	Upper
228	100		
226	32.5	25.2	37.8
229	22.4	16.0	24.0

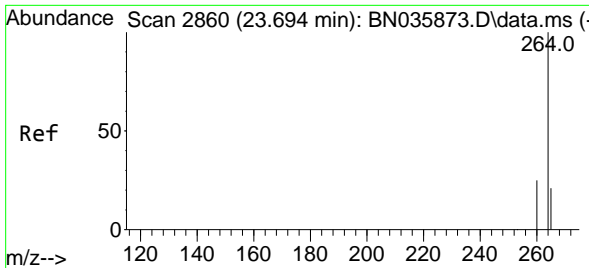


#34  
 Bis(2-ethylhexyl)phthalate  
 Concen: 0.477 ng  
 RT: 21.313 min Scan# 2249  
 Delta R.T. -0.008 min  
 Lab File: BN035912.D  
 Acq: 10 Jan 2025 21:20

Tgt Ion:149 Resp: 959

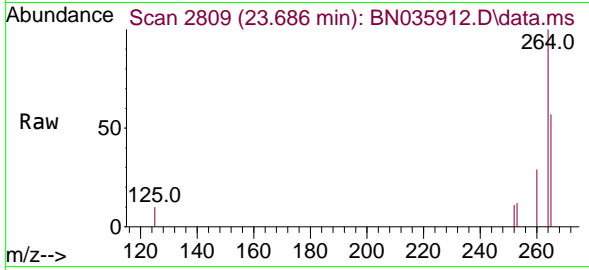
Ion	Ratio	Lower	Upper
149	100		
167	27.1	21.4	32.0
279	3.9	3.0	4.6



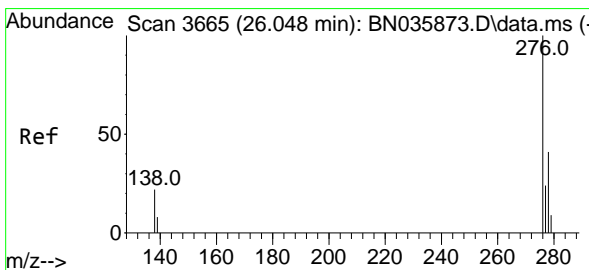
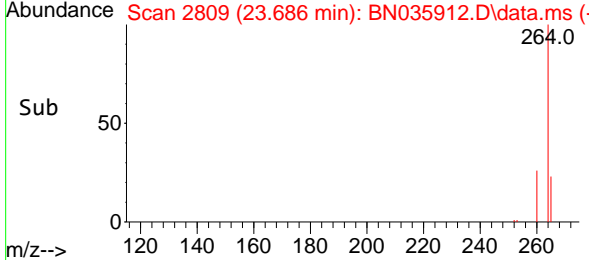
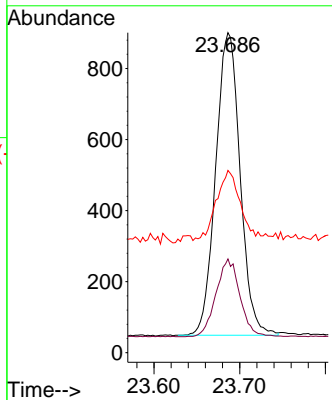


#35  
 Perylene-d12  
 Concen: 0.400 ng  
 RT: 23.686 min Scan# 21  
 Delta R.T. -0.008 min  
 Lab File: BN035912.D  
 Acq: 10 Jan 2025 21:20

Instrument :  
 BNA\_N  
 ClientSampleId :  
 SSTDCCC0.4EC

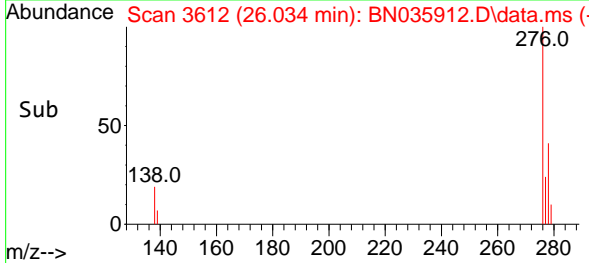
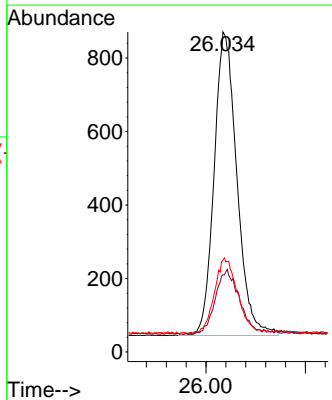
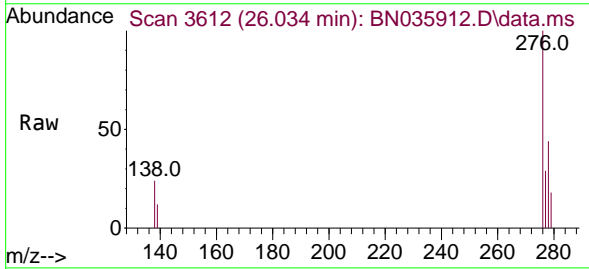


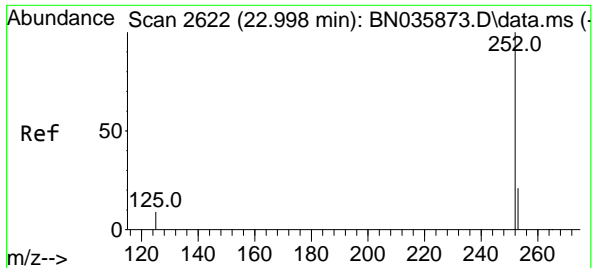
Tgt Ion:264 Resp: 1689  
 Ion Ratio Lower Upper  
 264 100  
 260 29.3 21.7 32.5  
 265 56.9 33.9 50.9#



#36  
 Indeno(1,2,3-cd)pyrene  
 Concen: 0.395 ng  
 RT: 26.034 min Scan# 3612  
 Delta R.T. -0.014 min  
 Lab File: BN035912.D  
 Acq: 10 Jan 2025 21:20

Tgt Ion:276 Resp: 2628  
 Ion Ratio Lower Upper  
 276 100  
 138 21.8 18.9 28.3  
 277 25.3 19.5 29.3



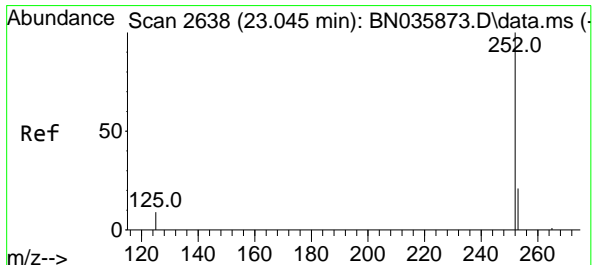
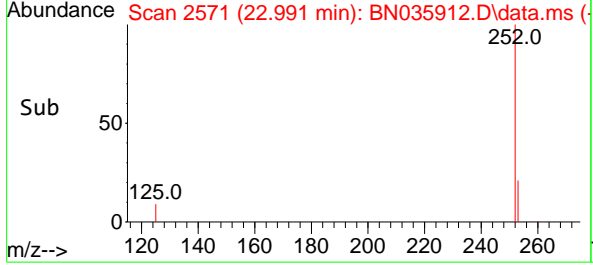
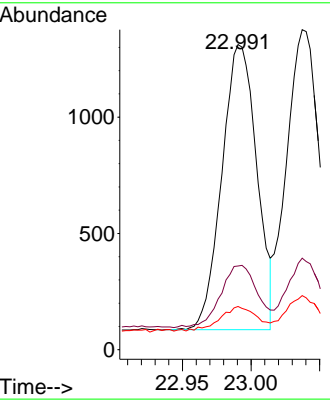
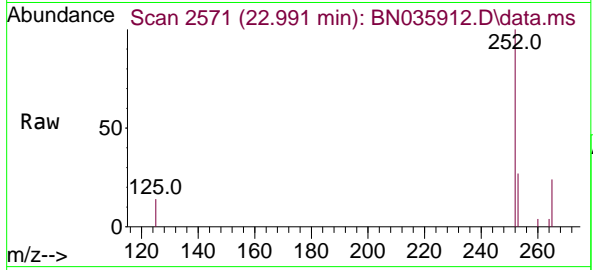


#37  
 Benzo(b)fluoranthene  
 Concen: 0.373 ng  
 RT: 22.991 min Scan# 2571  
 Delta R.T. -0.008 min  
 Lab File: BN035912.D  
 Acq: 10 Jan 2025 21:20

Instrument : BNA\_N  
 ClientSampleId : SSTDCCC0.4EC

Tgt Ion:252 Resp: 2167

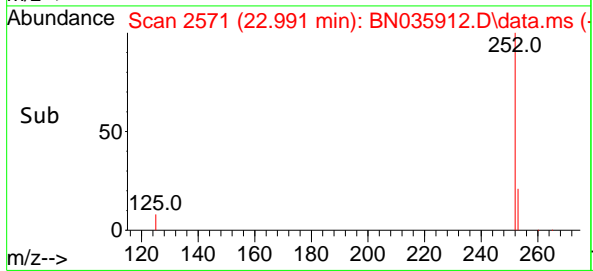
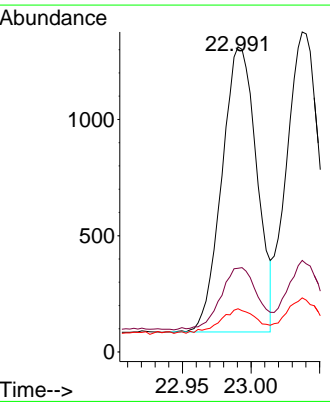
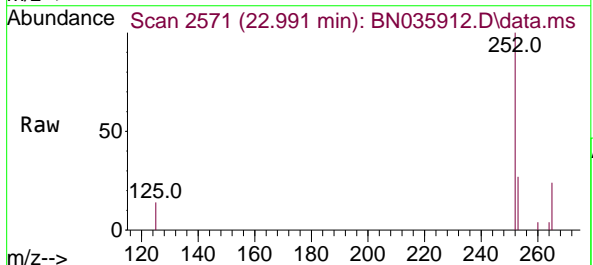
Ion	Ratio	Lower	Upper
252	100		
253	27.4	20.1	30.1
125	14.2	9.9	14.9

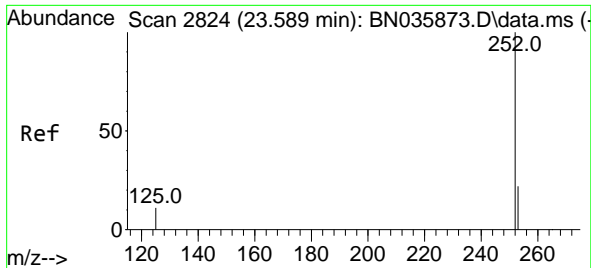


#38  
 Benzo(k)fluoranthene  
 Concen: 0.377 ng  
 RT: 22.991 min Scan# 2571  
 Delta R.T. -0.054 min  
 Lab File: BN035912.D  
 Acq: 10 Jan 2025 21:20

Tgt Ion:252 Resp: 2167

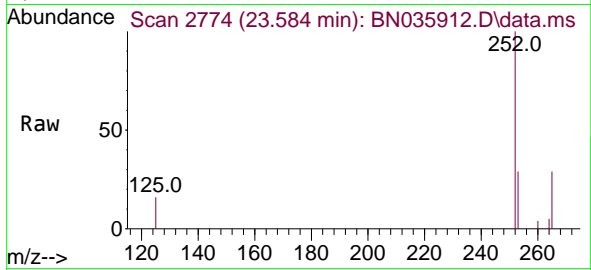
Ion	Ratio	Lower	Upper
252	100		
253	27.4	20.5	30.7
125	14.2	10.6	16.0



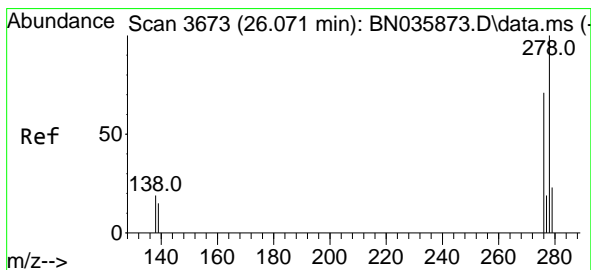
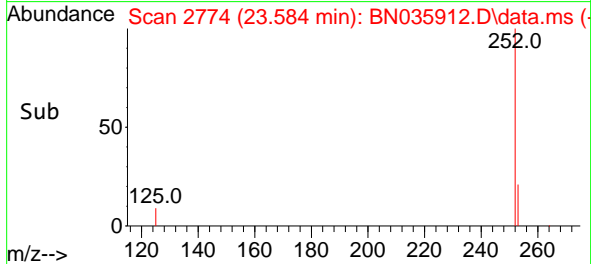
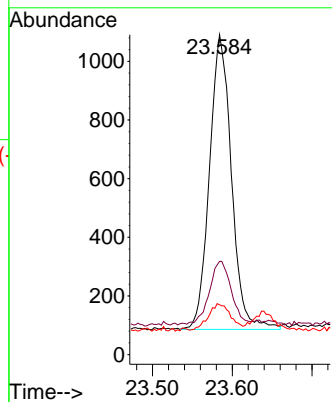


#39  
 Benzo(a)pyrene  
 Concen: 0.384 ng  
 RT: 23.584 min Scan# 21  
 Delta R.T. -0.005 min  
 Lab File: BN035912.D  
 Acq: 10 Jan 2025 21:20

Instrument :  
 BNA\_N  
 ClientSampleId :  
 SSTDCCC0.4EC

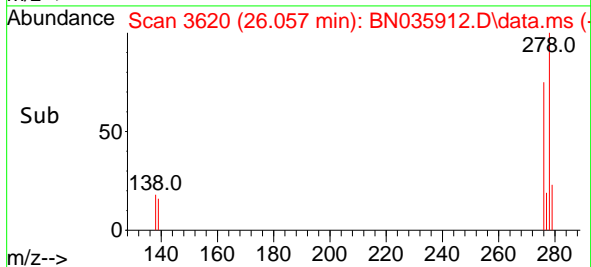
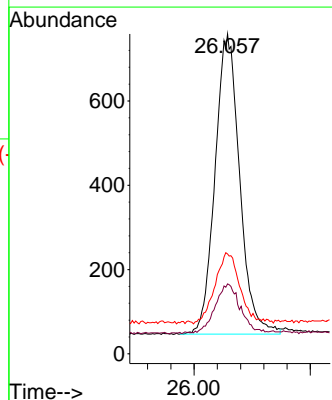
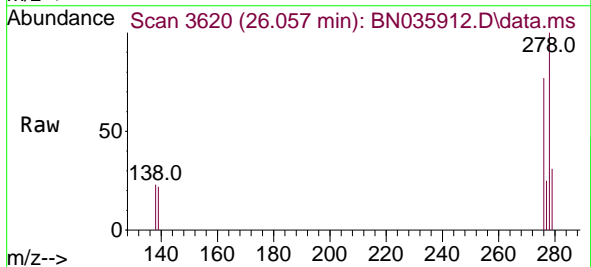


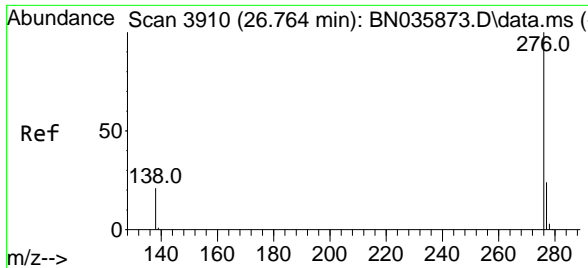
Tgt Ion:252 Resp: 1927  
 Ion Ratio Lower Upper  
 252 100  
 253 29.1 21.5 32.3  
 125 15.6 12.6 19.0



#40  
 Dibenzo(a,h)anthracene  
 Concen: 0.395 ng  
 RT: 26.057 min Scan# 3620  
 Delta R.T. -0.014 min  
 Lab File: BN035912.D  
 Acq: 10 Jan 2025 21:20

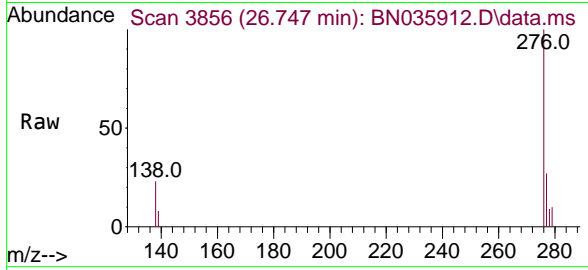
Tgt Ion:278 Resp: 2091  
 Ion Ratio Lower Upper  
 278 100  
 139 21.9 15.9 23.9  
 279 31.2 23.0 34.4





#41  
 Benzo(g,h,i)perylene  
 Concen: 0.388 ng  
 RT: 26.747 min Scan# 3856  
 Delta R.T. -0.016 min  
 Lab File: BN035912.D  
 Acq: 10 Jan 2025 21:20

Instrument : BNA\_N  
 ClientSampleId : SSTDCCC0.4EC



Tgt Ion: 276 Resp: 2297

Ion	Ratio	Lower	Upper
276	100		
277	27.4	22.8	34.2
138	23.4	20.1	30.1

