

Data Path : Z:\pestpcbsrv\HPCHEM1\ECD\_P\Data\PP010625\  
 Data File : PP068923.D  
 Signal(s) : Signal #1: ECD1A.ch Signal #2: ECD2B.ch  
 Acq On : 06 Jan 2025 22:07  
 Operator : YP\AJ  
 Sample : AR1242ICC750  
 Misc :  
 ALS Vial : 11 Sample Multiplier: 1

Instrument :  
 ECD\_P  
 ClientSampleId :  
 AR1242ICC750

Integration File signal 1: autoint1.e  
 Integration File signal 2: autoint2.e  
 Quant Time: Jan 07 10:51:12 2025  
 Quant Method : Z:\pestpcbsrv\HPCHEM1\ECD\_P\methods\PP010625.M  
 Quant Title : GC EXTRACTABLES  
 QLast Update : Tue Jan 07 10:50:59 2025  
 Response via : Initial Calibration  
 Integrator: ChemStation

Volume Inj. : 2 µl  
 Signal #1 Phase : ZB-MR1 Signal #2 Phase: ZB-MR2  
 Signal #1 Info : 30Mx0.32mmx 0.50µ Signal #2 Info : 30M x 0.32mm x 0.25µm

Compound	RT#1	RT#2	Resp#1	Resp#2	ng/ml	ng/ml
-----						
System Monitoring Compounds						
1) SA Tetrachlo...	4.673	3.983	108.6E6	75653909	75.564	75.982
2) SA Decachlor...	10.524	9.111	82230685	90098285	74.541	78.833
Target Compounds						
16) L4 AR-1242-1	5.834	5.084	26876876	20770009	742.232	750.548
17) L4 AR-1242-2	5.856	5.104	42773155	30485606	758.710	751.319
18) L4 AR-1242-3	5.919	5.283	25976477	17002647	754.167	753.854
19) L4 AR-1242-4	6.017	5.367	21415620	17619737	758.611	750.916
20) L4 AR-1242-5	6.751	5.896	22699409	21121556	754.176	756.910
-----						

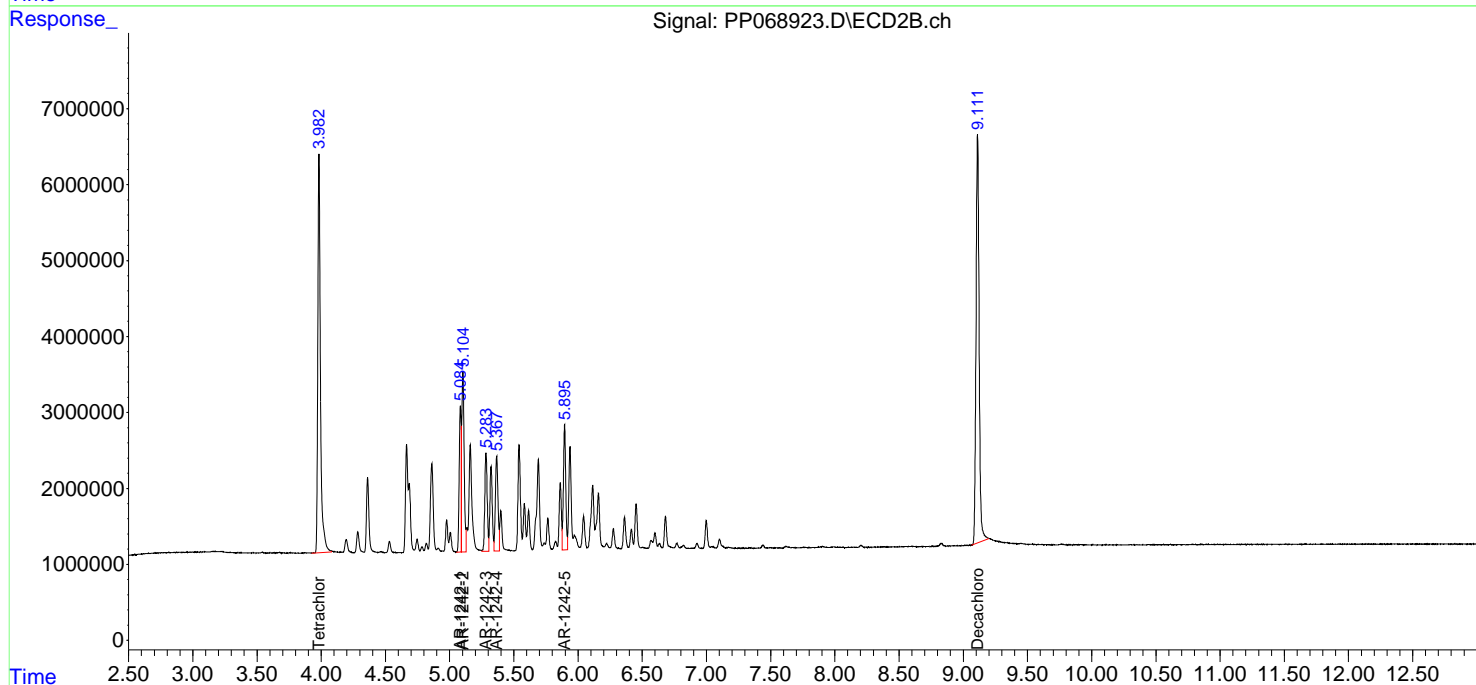
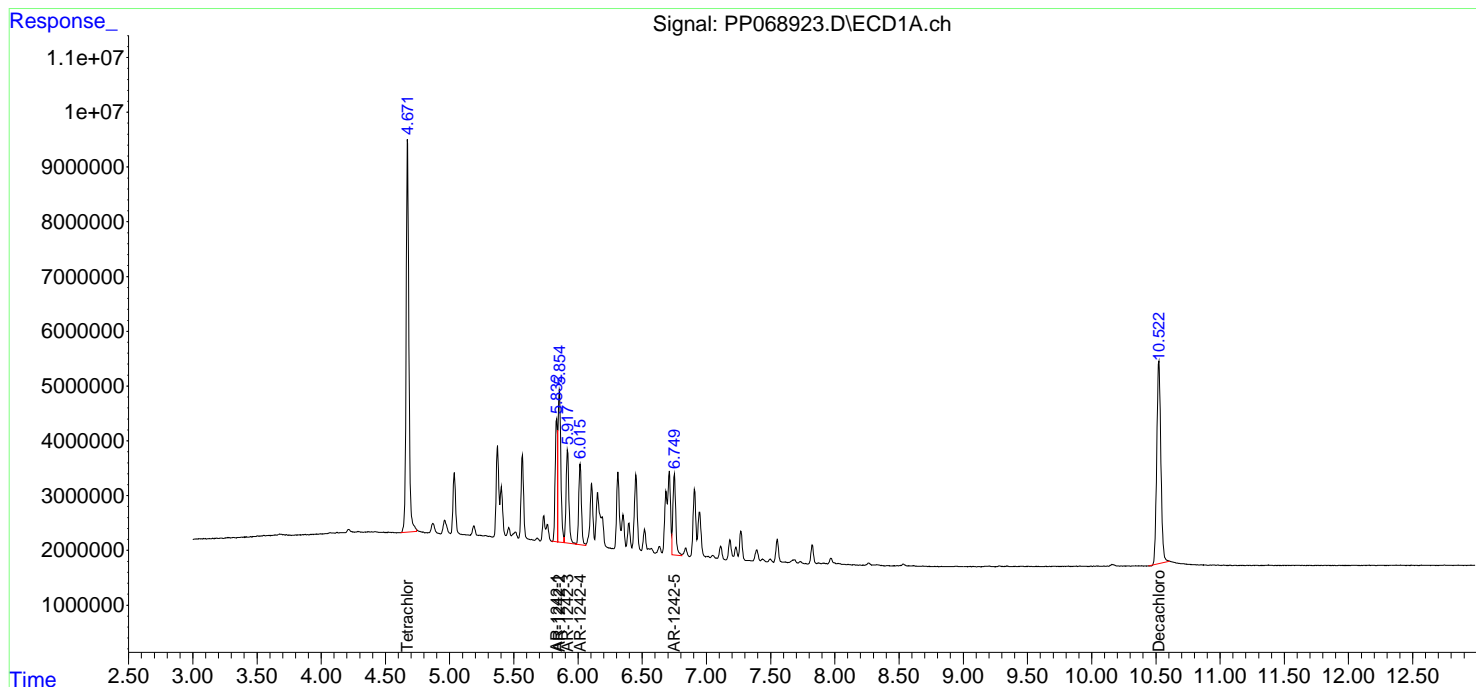
(f)=RT Delta > 1/2 Window (#)=Amounts differ by > 25% (m)=manual int.

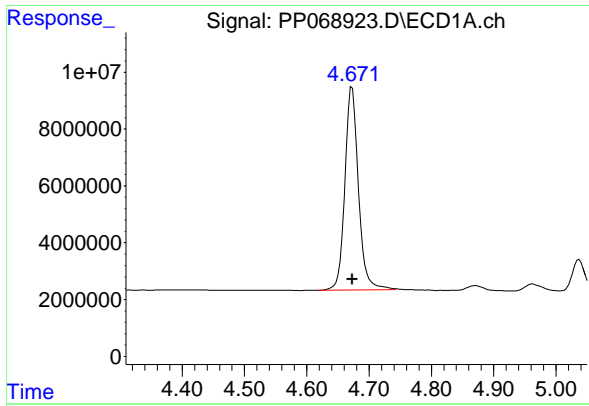
Data Path : Z:\pestpcbsrv\HPCHEM1\ECD\_P\Data\PP010625\  
Data File : PP068923.D  
Signal(s) : Signal #1: ECD1A.ch Signal #2: ECD2B.ch  
Acq On : 06 Jan 2025 22:07  
Operator : YP\AJ  
Sample : AR1242IC750  
Misc :  
ALS Vial : 11 Sample Multiplier: 1

Instrument :  
ECD\_P  
ClientSampleId :  
AR1242IC750

Integration File signal 1: autoint1.e  
Integration File signal 2: autoint2.e  
Quant Time: Jan 07 10:51:12 2025  
Quant Method : Z:\pestpcbsrv\HPCHEM1\ECD\_P\methods\PP010625.M  
Quant Title : GC EXTRACTABLES  
QLast Update : Tue Jan 07 10:50:59 2025  
Response via : Initial Calibration  
Integrator: ChemStation

Volume Inj. : 2 µl  
Signal #1 Phase : ZB-MR1 Signal #2 Phase: ZB-MR2  
Signal #1 Info : 30Mx0.32mmx 0.50µm Signal #2 Info : 30M x 0.32mm x 0.25µm

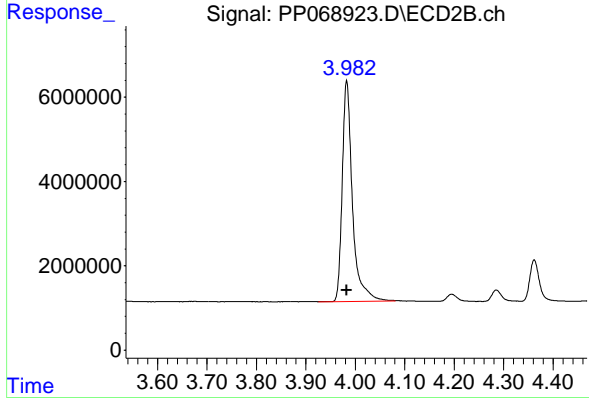




#1 Tetrachloro-m-xylene

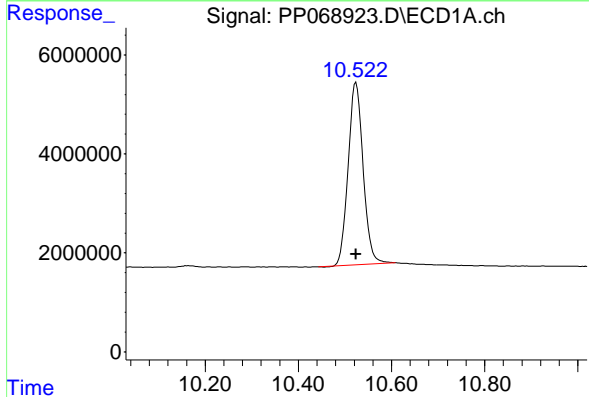
R.T.: 4.673 min  
 Delta R.T.: 0.000 min  
 Response: 108561875  
 Conc: 75.56 ng/ml

Instrument :  
 ECD\_P  
 ClientSampleId :  
 AR1242ICC750



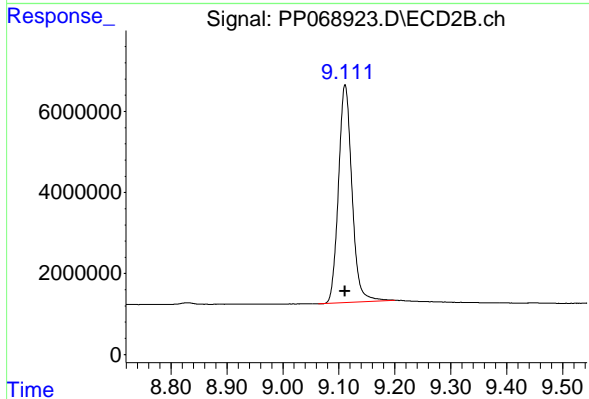
#1 Tetrachloro-m-xylene

R.T.: 3.983 min  
 Delta R.T.: 0.000 min  
 Response: 75653909  
 Conc: 75.98 ng/ml



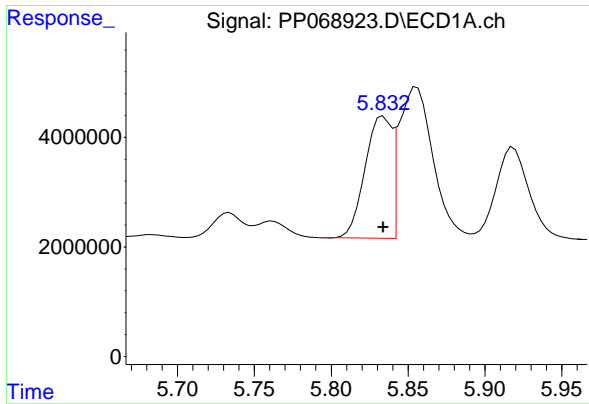
#2 Decachlorobiphenyl

R.T.: 10.524 min  
 Delta R.T.: 0.000 min  
 Response: 82230685  
 Conc: 74.54 ng/ml



#2 Decachlorobiphenyl

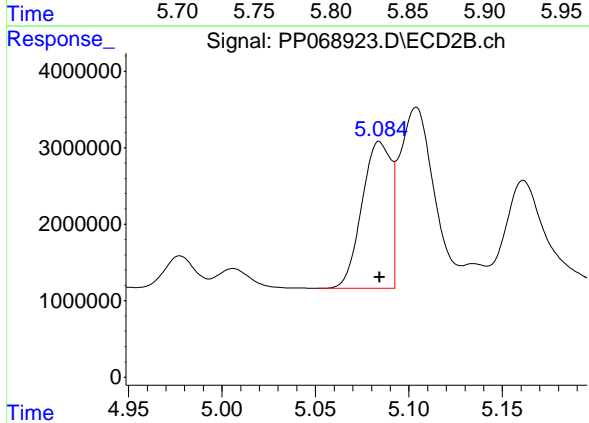
R.T.: 9.111 min  
 Delta R.T.: 0.000 min  
 Response: 90098285  
 Conc: 78.83 ng/ml



#16 AR-1242-1

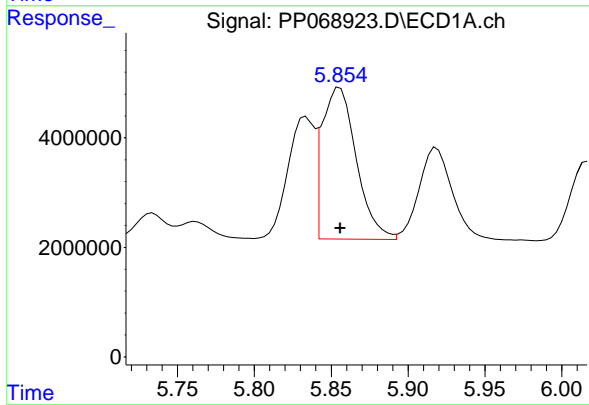
R.T.: 5.834 min  
 Delta R.T.: 0.000 min  
 Response: 26876876  
 Conc: 742.23 ng/ml

Instrument :  
 ECD\_P  
 ClientSampleId :  
 AR1242ICC750



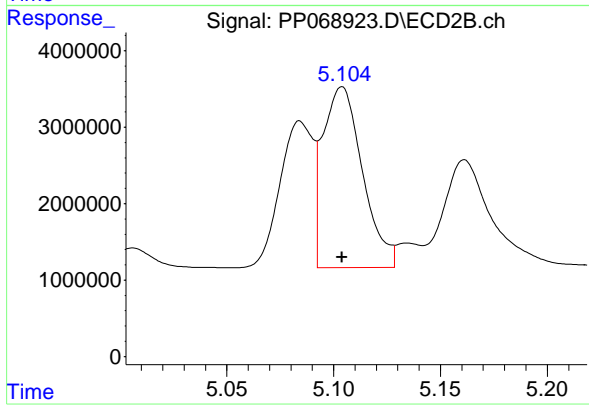
#16 AR-1242-1

R.T.: 5.084 min  
 Delta R.T.: 0.000 min  
 Response: 20770009  
 Conc: 750.55 ng/ml



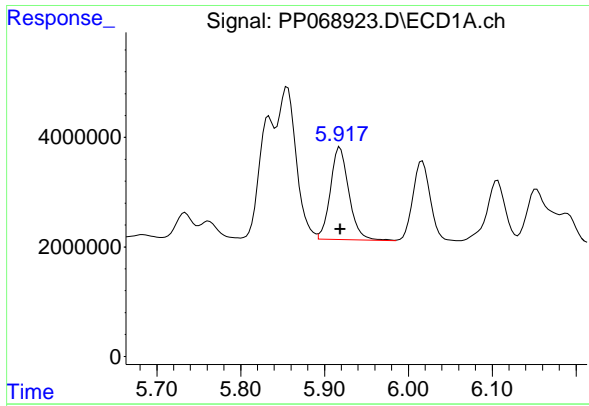
#17 AR-1242-2

R.T.: 5.856 min  
 Delta R.T.: 0.000 min  
 Response: 42773155  
 Conc: 758.71 ng/ml



#17 AR-1242-2

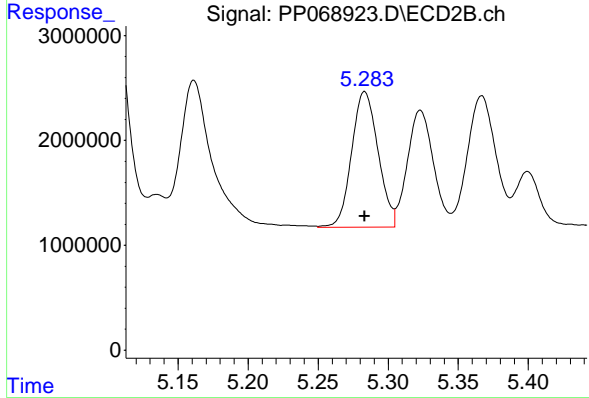
R.T.: 5.104 min  
 Delta R.T.: 0.000 min  
 Response: 30485606  
 Conc: 751.32 ng/ml



#18 AR-1242-3

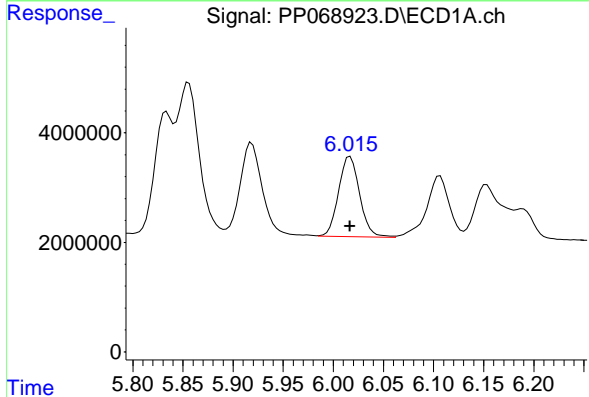
R.T.: 5.919 min  
 Delta R.T.: 0.000 min  
 Response: 25976477  
 Conc: 754.17 ng/ml

Instrument :  
 ECD\_P  
 ClientSampleId :  
 AR1242ICC750



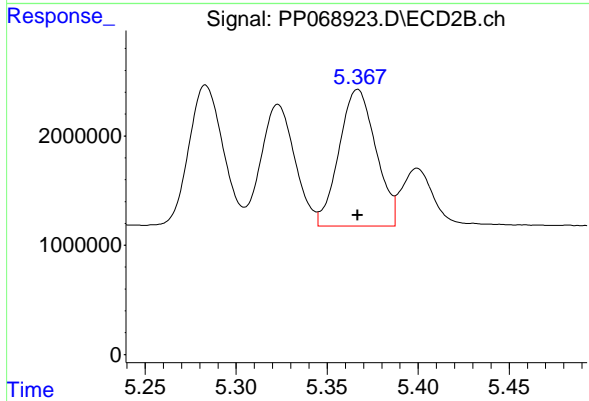
#18 AR-1242-3

R.T.: 5.283 min  
 Delta R.T.: 0.000 min  
 Response: 17002647  
 Conc: 753.85 ng/ml



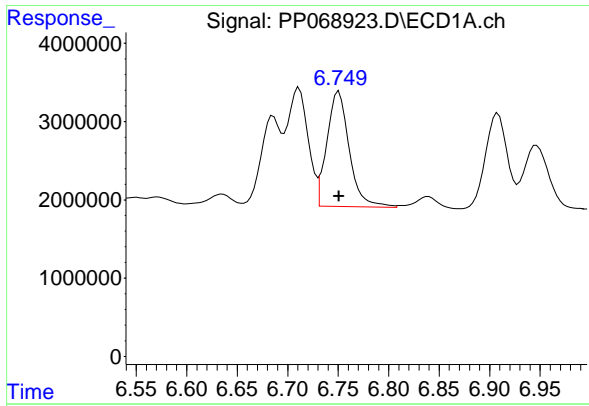
#19 AR-1242-4

R.T.: 6.017 min  
 Delta R.T.: 0.000 min  
 Response: 21415620  
 Conc: 758.61 ng/ml



#19 AR-1242-4

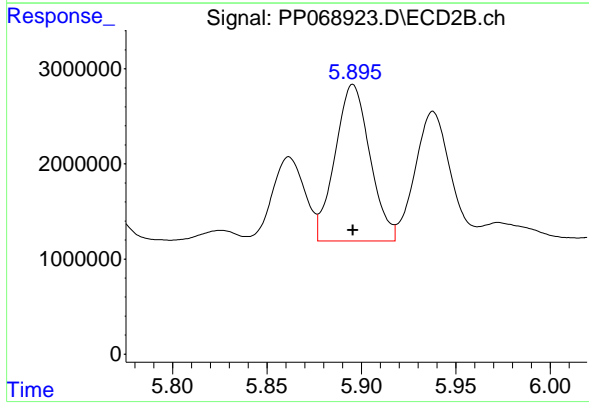
R.T.: 5.367 min  
 Delta R.T.: 0.000 min  
 Response: 17619737  
 Conc: 750.92 ng/ml



#20 AR-1242-5

R.T.: 6.751 min  
Delta R.T.: 0.000 min  
Response: 22699409  
Conc: 754.18 ng/ml

Instrument :  
ECD\_P  
ClientSampleId :  
AR1242ICC750



#20 AR-1242-5

R.T.: 5.896 min  
Delta R.T.: 0.000 min  
Response: 21121556  
Conc: 756.91 ng/ml