

Data Path : Z:\pestpcbsrv\HPCHEM1\ECD_P\Data\PP010625\
 Data File : PP068932.D
 Signal(s) : Signal #1: ECD1A.ch Signal #2: ECD2B.ch
 Acq On : 07 Jan 2025 00:34
 Operator : YP\AJ
 Sample : AR1254ICC1000
 Misc :
 ALS Vial : 20 Sample Multiplier: 1

Instrument :
 ECD_P
ClientSampleId :
 AR1254ICC1000

Manual Integrations
APPROVED

Reviewed By :Yogesh Patel 01/07/2025
 Supervised By :Ankita Jodhani 01/07/2025

Integration File signal 1: autoint1.e
 Integration File signal 2: autoint2.e
 Quant Time: Jan 07 04:54:24 2025
 Quant Method : Z:\pestpcbsrv\HPCHEM1\ECD_P\methods\PP010625.M
 Quant Title : GC EXTRACTABLES
 QLast Update : Tue Jan 07 04:31:10 2025
 Response via : Initial Calibration
 Integrator: ChemStation

Volume Inj. : 2 µl
 Signal #1 Phase : ZB-MR1 Signal #2 Phase: ZB-MR2
 Signal #1 Info : 30Mx0.32mmx 0.50µ Signal #2 Info : 30M x 0.32mm x 0.25µm

Compound	RT#1	RT#2	Resp#1	Resp#2	ng/ml	ng/ml

System Monitoring Compounds						
1) SA Tetrachlo...	4.673	3.983	136.6E6	101.0E6	93.314	95.568
2) SA Decachlor...	10.522	9.111	106.7E6	108.7E6	91.624	89.877
Target Compounds						
26) L6 AR-1254-1	6.686	5.898	49172649	54013826	946.144m	897.551
27) L6 AR-1254-2	6.905	6.045	74069643	47307501	903.115	887.343
28) L6 AR-1254-3	7.269	6.453	74567235	74830722	917.733	901.418
29) L6 AR-1254-4	7.552	6.682	56677692	41013798	922.013	905.924
30) L6 AR-1254-5	7.969	7.102	58716523	68187162	880.203m	898.577

(f)=RT Delta > 1/2 Window (#)=Amounts differ by > 25% (m)=manual int.

Data Path : Z:\pestpcbsrv\HPCHEM1\ECD_P\Data\PP010625\
 Data File : PP068932.D
 Signal(s) : Signal #1: ECD1A.ch Signal #2: ECD2B.ch
 Acq On : 07 Jan 2025 00:34
 Operator : YP\AJ
 Sample : AR1254ICC1000
 Misc :
 ALS Vial : 20 Sample Multiplier: 1

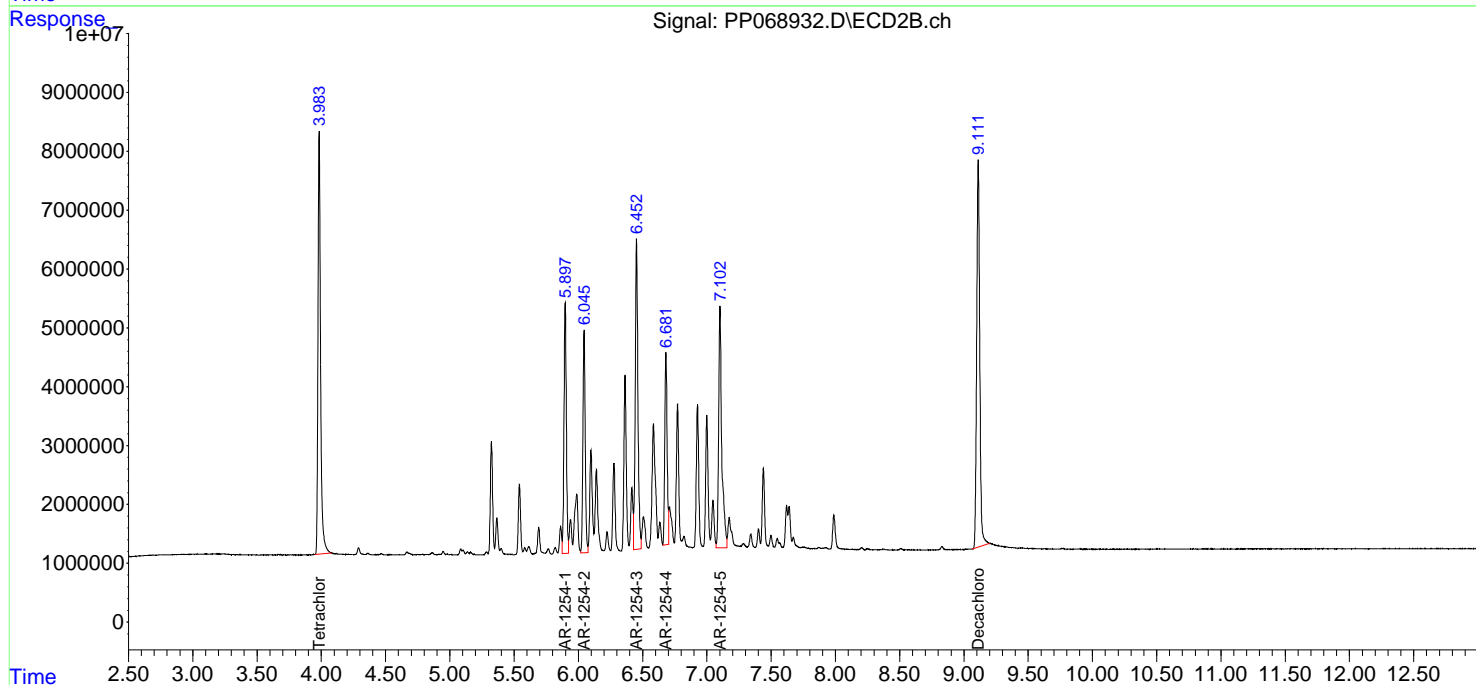
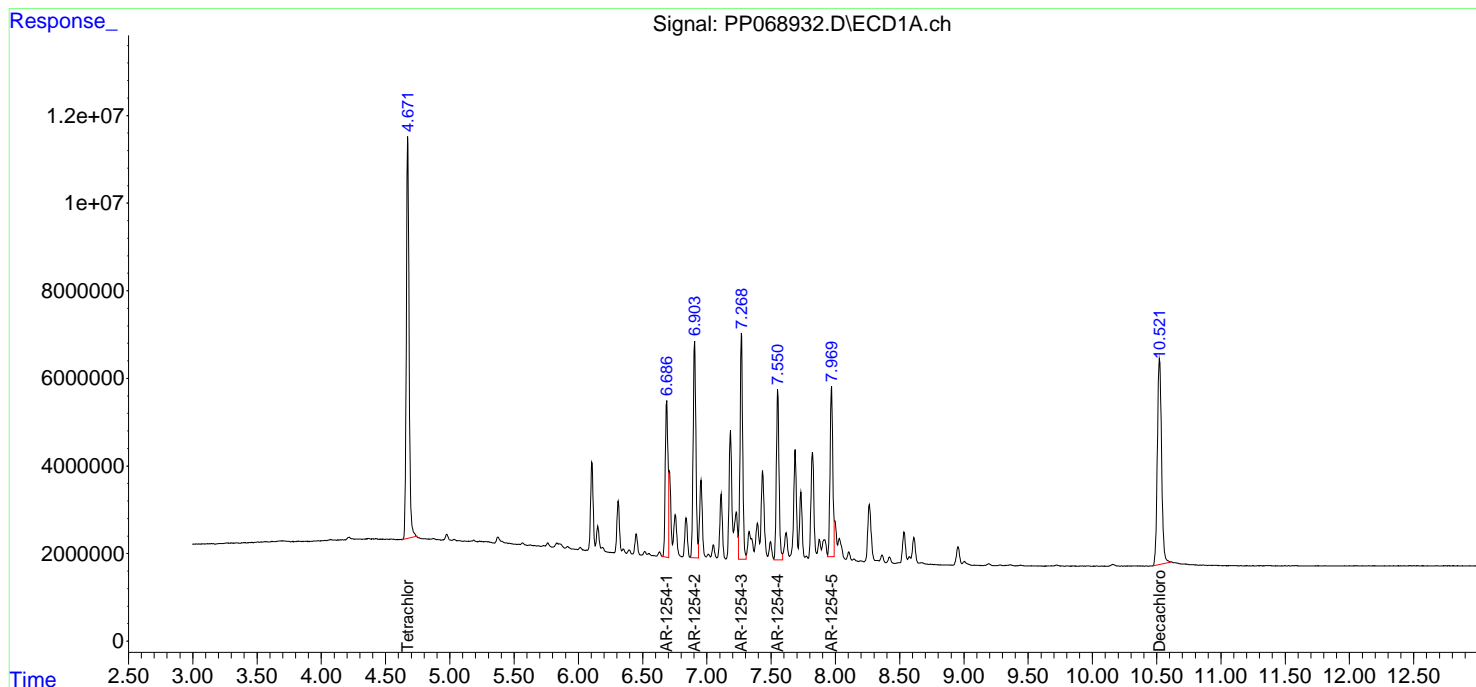
Instrument :
 ECD_P
 ClientSampleId :
 AR1254ICC1000

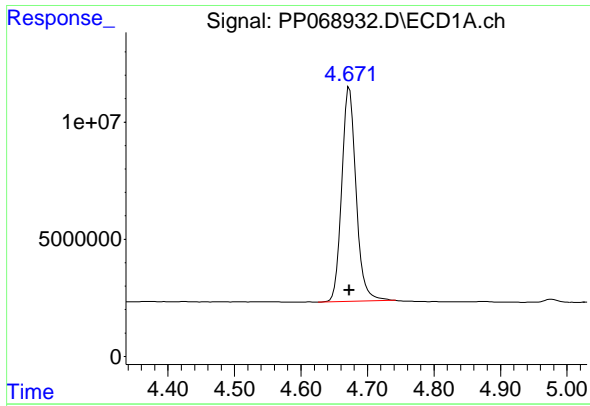
Manual Integrations
 APPROVED

Reviewed By :Yogesh Patel 01/07/2025
 Supervised By :Ankita Jodhani 01/07/2025

Integration File signal 1: autoint1.e
 Integration File signal 2: autoint2.e
 Quant Time: Jan 07 04:54:24 2025
 Quant Method : Z:\pestpcbsrv\HPCHEM1\ECD_P\methods\PP010625.M
 Quant Title : GC EXTRACTABLES
 QLast Update : Tue Jan 07 04:31:10 2025
 Response via : Initial Calibration
 Integrator: ChemStation

Volume Inj. : 2 µl
 Signal #1 Phase : ZB-MR1 Signal #2 Phase: ZB-MR2
 Signal #1 Info : 30Mx0.32mmx 0.50µm Signal #2 Info : 30M x 0.32mm x 0.25µm





#1 Tetrachloro-m-xylene

R.T.: 4.673 min
 Delta R.T.: 0.000 min
 Response: 136577578
 Conc: 93.31 ng/ml

Instrument :

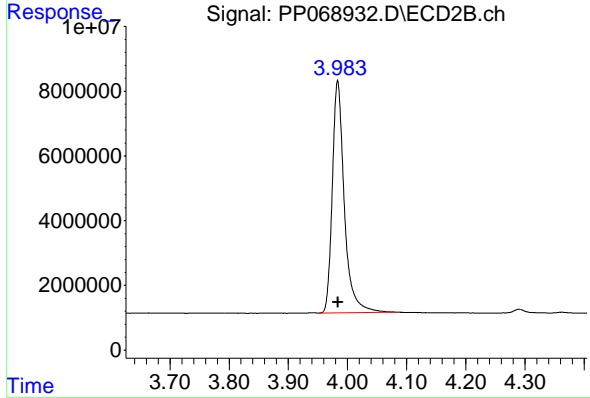
ECD_P

Client Sample Id :

AR1254ICC1000

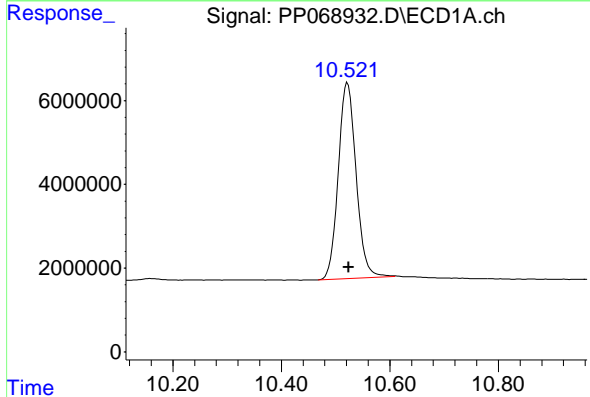
Manual Integrations
 APPROVED

Reviewed By :Yogesh Patel 01/07/2025
 Supervised By :Ankita Jodhani 01/07/2025



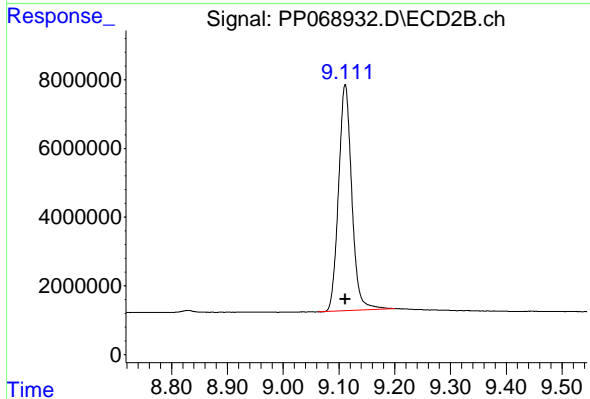
#1 Tetrachloro-m-xylene

R.T.: 3.983 min
 Delta R.T.: 0.000 min
 Response: 100951130
 Conc: 95.57 ng/ml



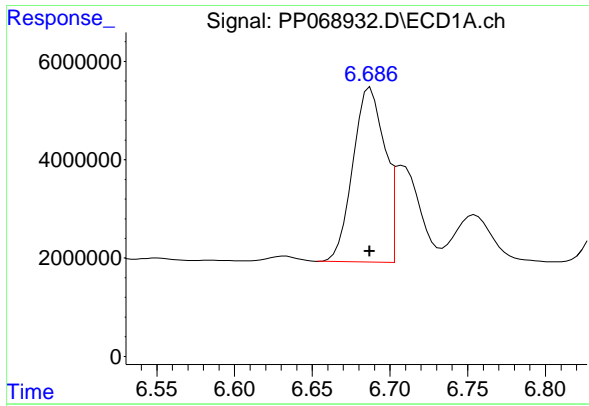
#2 Decachlorobiphenyl

R.T.: 10.522 min
 Delta R.T.: -0.002 min
 Response: 106683896
 Conc: 91.62 ng/ml



#2 Decachlorobiphenyl

R.T.: 9.111 min
 Delta R.T.: 0.000 min
 Response: 108709644
 Conc: 89.88 ng/ml



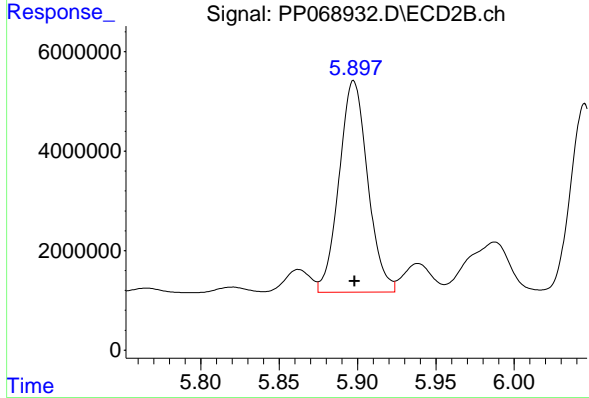
#26 AR-1254-1

R.T.: 6.686 min
 Delta R.T.: 0.000 min
 Response: 49172649
 Conc: 946.14 ng/ml

Instrument : ECD_P
 Client Sample Id : AR1254ICC1000

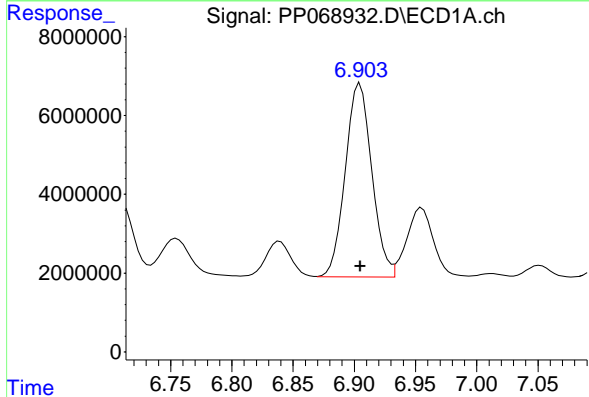
Manual Integrations
 APPROVED

Reviewed By :Yogesh Patel 01/07/2025
 Supervised By :Ankita Jodhani 01/07/2025



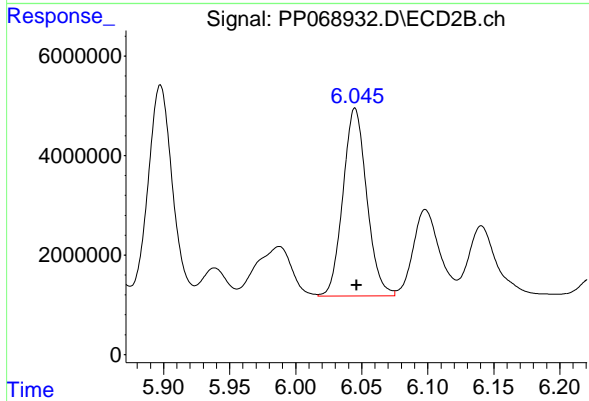
#26 AR-1254-1

R.T.: 5.898 min
 Delta R.T.: 0.000 min
 Response: 54013826
 Conc: 897.55 ng/ml



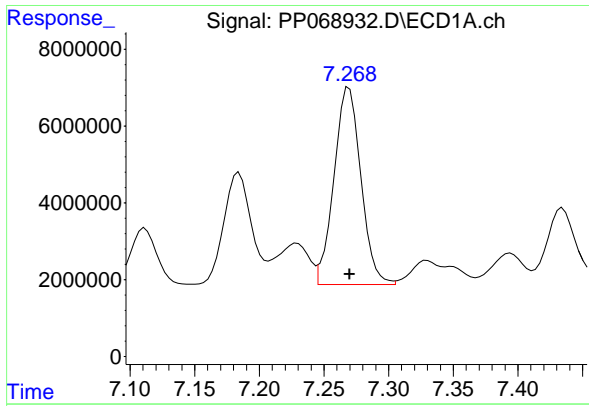
#27 AR-1254-2

R.T.: 6.905 min
 Delta R.T.: 0.000 min
 Response: 74069643
 Conc: 903.11 ng/ml



#27 AR-1254-2

R.T.: 6.045 min
 Delta R.T.: -0.001 min
 Response: 47307501
 Conc: 887.34 ng/ml



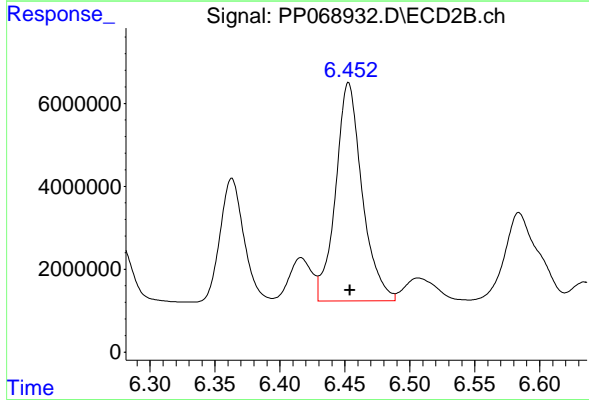
#28 AR-1254-3

R.T.: 7.269 min
 Delta R.T.: 0.000 min
 Response: 74567235
 Conc: 917.73 ng/ml

Instrument : ECD_P
 Client Sample Id : AR1254ICC1000

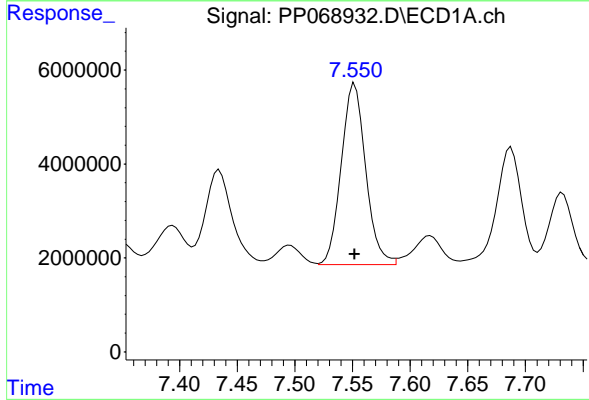
Manual Integrations
 APPROVED

Reviewed By :Yogesh Patel 01/07/2025
 Supervised By :Ankita Jodhani 01/07/2025



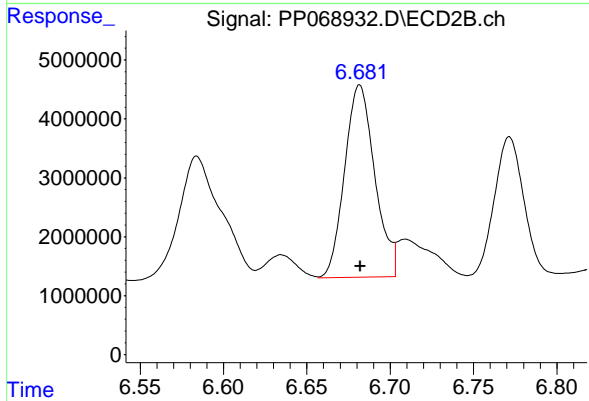
#28 AR-1254-3

R.T.: 6.453 min
 Delta R.T.: -0.001 min
 Response: 74830722
 Conc: 901.42 ng/ml



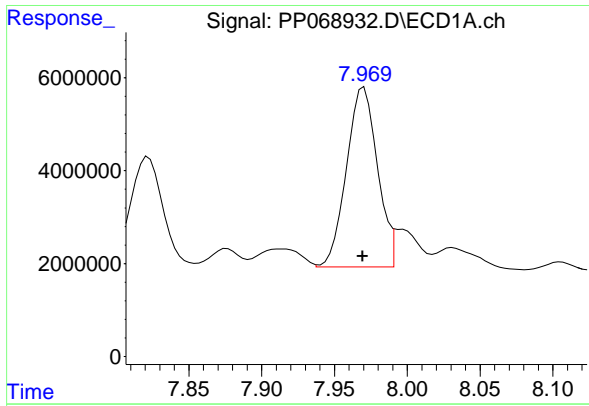
#29 AR-1254-4

R.T.: 7.552 min
 Delta R.T.: 0.000 min
 Response: 56677692
 Conc: 922.01 ng/ml



#29 AR-1254-4

R.T.: 6.682 min
 Delta R.T.: 0.000 min
 Response: 41013798
 Conc: 905.92 ng/ml



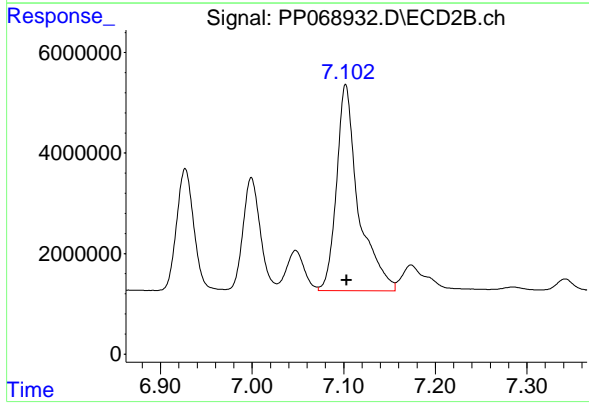
#30 AR-1254-5

R.T.: 7.969 min
 Delta R.T.: 0.000 min
 Response: 58716523
 Conc: 880.20 ng/ml

Instrument :
 ECD_P
 ClientSampleId :
 AR1254ICC1000

Manual Integrations
 APPROVED

Reviewed By :Yogesh Patel 01/07/2025
 Supervised By :Ankita Jodhani 01/07/2025



#30 AR-1254-5

R.T.: 7.102 min
 Delta R.T.: 0.000 min
 Response: 68187162
 Conc: 898.58 ng/ml