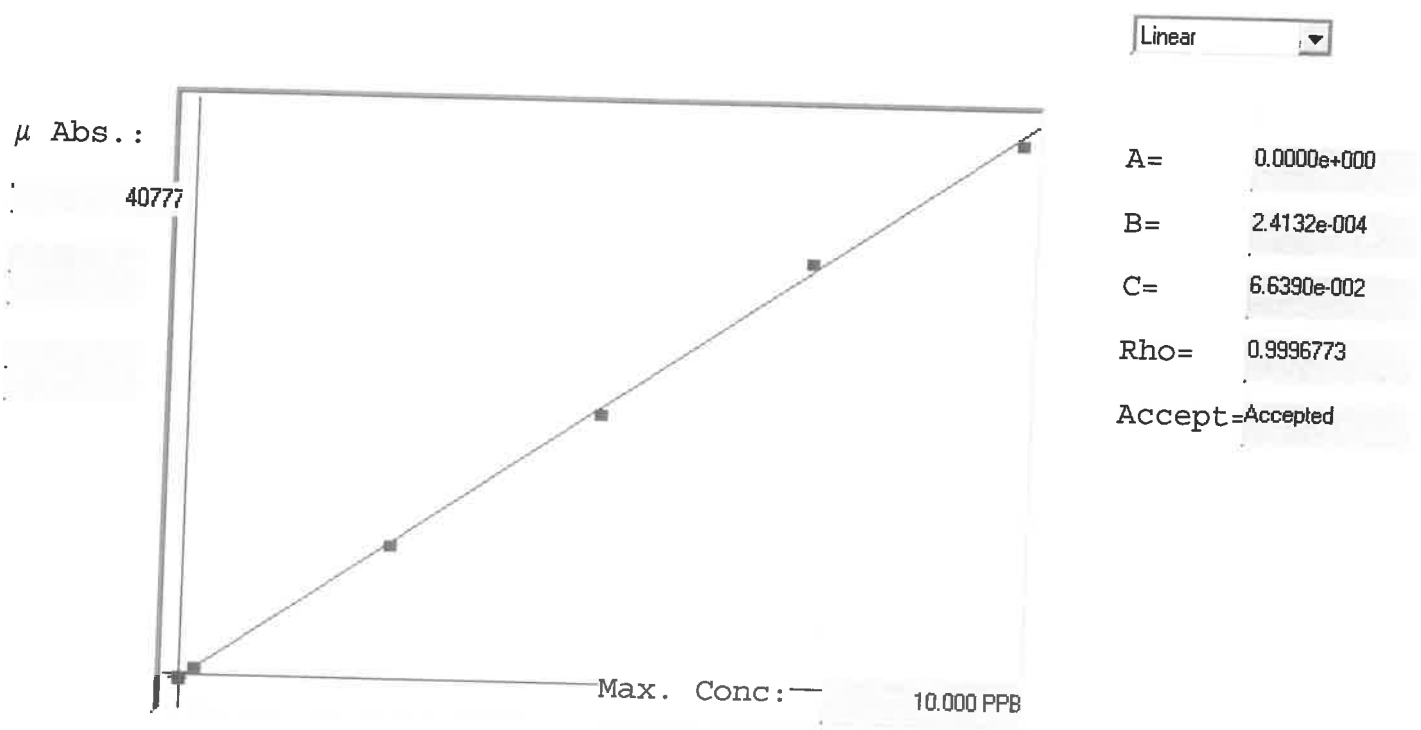


LB134341

7470A INSTRUMENT ID: CV1



Std ID	Conc.	Calc.	Dev.	Mean	SD or %RSD	Rep 1	Rep 2	Rep 3	Rep 4	Rep 5	% 1)
0.0	0.000	-0.009	-0.009	-311	0.000	-311	0				
0.2	0.200	0.231	0.031	681	0.0 %	681					16
2.5	2.500	2.478	-0.022	9993	0.0 %	9993					1
5.0	5.000	4.908	-0.092	20064	0.0 %	20064					2
7.5	7.500	7.685	0.185	31569	0.0 %	31569					2
10.0	10.000	9.907	-0.093	40777	0.0 %	40777					1

LB134341 INSTRUMENT ID : CV1

Method: 7470A

Operator: Admin

Date of Analysis: 20 Jan 2025 10:21:21

Sample ID	Extended ID	Abs.	Conc.	Std Conc	Method	Units	Date	Type	Type
0.0 - 1	50.2	-311	-	0.0000	7470A	PPB	20 Jan 2025 10:41:26	S	Std
0.2 - 1	52.5	681	-	0.2000	7470A	PPB	20 Jan 2025 10:43:44	S	Std
2.5 - 1	55.5	9993	-	2.5000	7470A	PPB	20 Jan 2025 10:46:01	S	Std
5.0 - 1	58.5	20064	-	5.0000	7470A	PPB	20 Jan 2025 10:48:18	S	Std
7.5 - 1	58	31569	-	7.5000	7470A	PPB	20 Jan 2025 10:50:35	S	Std
10.0 - 1		40777	-	10.0000	7470A	PPB	20 Jan 2025 10:58:10	S	Std
ICV62 - 1	ICV62	16293	3.9983	-	7470A	PPB	20 Jan 2025 11:03:30	U	SMPL
ICB62 - 1	ICB62	-126	0.0360	-	7470A	PPB	20 Jan 2025 11:05:45	U	SMPL
CCV50 - 1	CCV50	19547	4.7836	-	7470A	PPB	20 Jan 2025 11:08:01	U	SMPL
CCB50 - 1	CCB50	-195	0.0193	-	7470A	PPB	20 Jan 2025 11:10:17	U	SMPL
CRA - 1	CRA	660	0.2257	-	7470A	PPB	20 Jan 2025 11:15:32	U	SMPL
HighStd - 1	HighStd	38556	9.3709	-	7470A	PPB	20 Jan 2025 11:17:47	U	SMPL
ChkStd - 1	ChkStd	26744	6.5204	-	7470A	PPB	20 Jan 2025 11:20:02	U	SMPL
PB166122BL - 1	PBW	-267	0.0020	-	7470A	PPB	20 Jan 2025 11:22:20	U	SMPL
PB166122BS - 1	LCSW	15747	3.8665	-	7470A	PPB	20 Jan 2025 11:24:38	U	SMPL
Q1092-02 - 1	428	-194	0.0196	-	7470A	PPB	20 Jan 2025 11:26:54	U	SMPL
Q1092-03 - 1	429	4	0.0674	-	7470A	PPB	20 Jan 2025 11:29:12	U	SMPL
Q1115-02 - 1	366	61	0.0811	-	7470A	PPB	20 Jan 2025 11:31:29	U	SMPL
Q1115-05 - 1	VNJ-214	128	0.0973	-	7470A	PPB	20 Jan 2025 11:33:46	U	SMPL
Q1115-08 - 1	72-11995	91	0.0884	-	7470A	PPB	20 Jan 2025 11:36:01	U	SMPL
CCV51 - 1	CCV51	18453	4.5196	-	7470A	PPB	20 Jan 2025 11:38:16	U	SMPL
CCB51 - 1	CCB51	-155	0.0290	-	7470A	PPB	20 Jan 2025 11:40:32	U	SMPL
Q1115-11 - 1	VNJ-213	18	0.0707	-	7470A	PPB	20 Jan 2025 11:42:50	U	SMPL
Q1119-01 - 1	FILTER CAKE	8	0.0683	-	7470A	PPB	20 Jan 2025 11:45:05	U	SMPL
Q1119-01DUP - 1	FILTER CAKEDUP	10	0.0688	-	7470A	PPB	20 Jan 2025 11:47:20	U	SMPL
Q1119-01MS - 1	FILTER CAKEMS	14192	3.4913	-	7470A	PPB	20 Jan 2025 11:49:36	U	SMPL
Q1119-01MSD - 1	FILTER CAKEMSD	14687	3.6107	-	7470A	PPB	20 Jan 2025 11:51:52	U	SMPL
PB166123BL - 1	PBW	-138	0.0331	-	7470A	PPB	20 Jan 2025 11:54:10	U	SMPL
PB166123BS - 1	LCSW	15082	3.7060	-	7470A	PPB	20 Jan 2025 11:56:27	U	SMPL
Q1096-01 - 1	D3746	119	0.0951	-	7470A	PPB	20 Jan 2025 11:58:44	U	SMPL
Q1096-01DUP - 1	D3746DUP	88	0.0876	-	7470A	PPB	20 Jan 2025 12:01:03	U	SMPL
Q1096-01MS - 1	D3746MS	10975	2.7149	-	7470A	PPB	20 Jan 2025 12:03:19	U	SMPL
CCV52 - 1	CCV52	19486	4.7688	-	7470A	PPB	20 Jan 2025 12:05:35	U	SMPL
CCB52 - 1	CCB52	-212	0.0152	-	7470A	PPB	20 Jan 2025 12:07:51	U	SMPL
Q1096-01MSD - 1	D3746MSD	9597	2.3824	-	7470A	PPB	20 Jan 2025 12:10:09	U	SMPL
PB166067TB - 1	PB166067TB	-331	-0.0135	-	7470A	PPB	20 Jan 2025 12:12:24	U	SMPL
PB166068TB - 1	PB166068TB	-84	0.0461	-	7470A	PPB	20 Jan 2025 12:14:41	U	SMPL
Q1119-01LX5 - 1		47	0.0777	-	7470A	PPB	20 Jan 2025 12:16:59	U	SMPL
Q1119-01A - 1		14356	3.5308	-	7470A	PPB	20 Jan 2025 12:19:14	U	SMPL
Q1096-01LX5 - 1		27	0.0729	-	7470A	PPB	20 Jan 2025 12:21:31	U	SMPL
Q1096-01A - 1		14781	3.6334	-	7470A	PPB	20 Jan 2025 12:23:49	U	SMPL
CCV53 - 1	CCV53	19862	4.8596	-	7470A	PPB	20 Jan 2025 12:26:07	U	SMPL
CCB53 - 1	CCB53	-152	0.0297	-	7470A	PPB	20 Jan 2025 12:28:26	U	SMPL