

Data Path : Z:\pestpcbsrv\HPCHEM1\ECD_L\Data\PL012025\
 Data File : PL093702.D
 Signal(s) : Signal #1: ECD1A.ch Signal #2: ECD2B.ch
 Acq On : 20 Jan 2025 12:35
 Operator : AR\AJ
 Sample : PB166101BS
 Misc :
 ALS Vial : 10 Sample Multiplier: 1

Instrument :
 ECD_L
 ClientSampleId :
 PB166101BS

Integration File signal 1: autoint1.e
 Integration File signal 2: autoint2.e
 Quant Time: Jan 20 13:28:33 2025
 Quant Method : Z:\pestpcbsrv\HPCHEM1\ECD_L\methods\PL122324.M
 Quant Title : GC Extractables
 QLast Update : Tue Dec 24 15:29:41 2024
 Response via : Initial Calibration
 Integrator: ChemStation

Volume Inj. : 1 µl
 Signal #1 Phase : ZB-MR1 Signal #2 Phase: ZB-MR2
 Signal #1 Info : 30M x 0.32mm x0.5 Signal #2 Info : 30M x 0.32mm x0.25µm

Compound	RT#1	RT#2	Resp#1	Resp#2	ng/ml	ng/ml

System Monitoring Compounds						
1) SA Tetrachlo...	3.539	2.775	45659025	52096414	18.443	17.895
28) SA Decachlor...	9.055	7.910	37729400	58906247	20.405	19.728
Target Compounds						
2) A alpha-BHC	3.994	3.277	160.9E6	211.5E6	46.593	48.667
3) MA gamma-BHC...	4.327	3.607	152.4E6	202.1E6	46.476	47.892
4) MA Heptachlor	4.915	3.945	141.2E6	204.1E6	48.218	49.113
5) MB Aldrin	5.256	4.225	134.4E6	194.7E6	46.198	47.451
6) B beta-BHC	4.525	3.907	69603796	89585123	48.283	49.839
7) B delta-BHC	4.772	4.135	145.0E6	201.3E6	47.335	47.593
8) B Heptachlo...	5.683	4.727	123.4E6	184.8E6	46.850	48.260
9) A Endosulfan I	6.068	5.097	112.7E6	176.6E6	47.787	50.558
10) B gamma-Chl...	5.939	4.977	120.7E6	194.6E6	48.048	50.496
11) B alpha-Chl...	6.018	5.041	120.9E6	191.0E6	48.300	50.163
12) B 4,4'-DDE	6.191	5.230	111.3E6	186.9E6	49.616	50.815
13) MA Dieldrin	6.343	5.361	118.8E6	193.5E6	47.602	50.221
14) MA Endrin	6.573	5.637	98819142	165.6E6	45.910	50.065
15) B Endosulfa...	6.793	5.932	103.9E6	171.1E6	45.695	52.654
16) A 4,4'-DDD	6.709	5.785	90684502	154.7E6	51.644	54.676
17) MA 4,4'-DDT	7.023	6.035	92051705	153.4E6	49.797	50.773
18) B Endrin al...	6.923	6.111	83191441	134.6E6	46.881	49.970
19) B Endosulfa...	7.158	6.334	97473401	162.3E6	48.277	51.467
20) A Methoxychlor	7.500	6.610	48462081	77919647	48.478	48.408
21) B Endrin ke...	7.643	6.839	109.3E6	190.3E6	48.714	52.285
22) Mirex	8.115	7.019	83022085	140.7E6	44.427	46.049

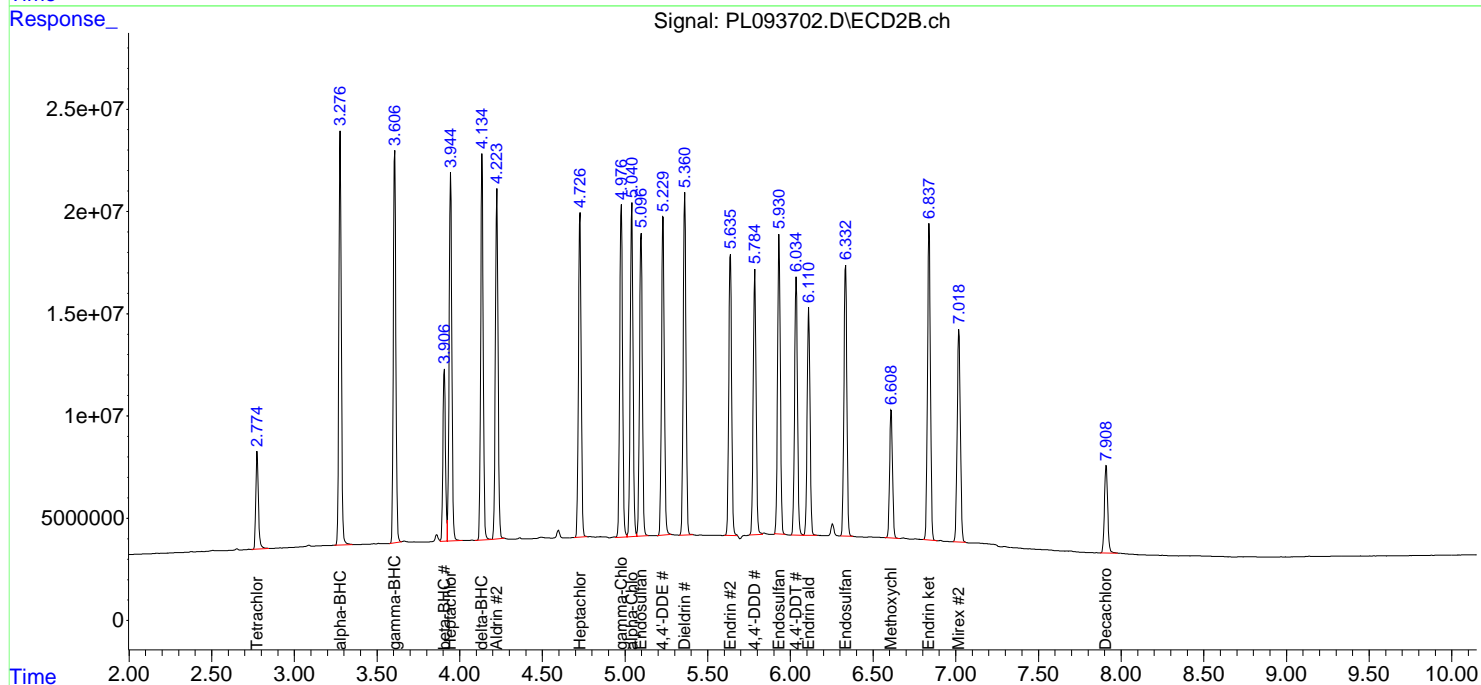
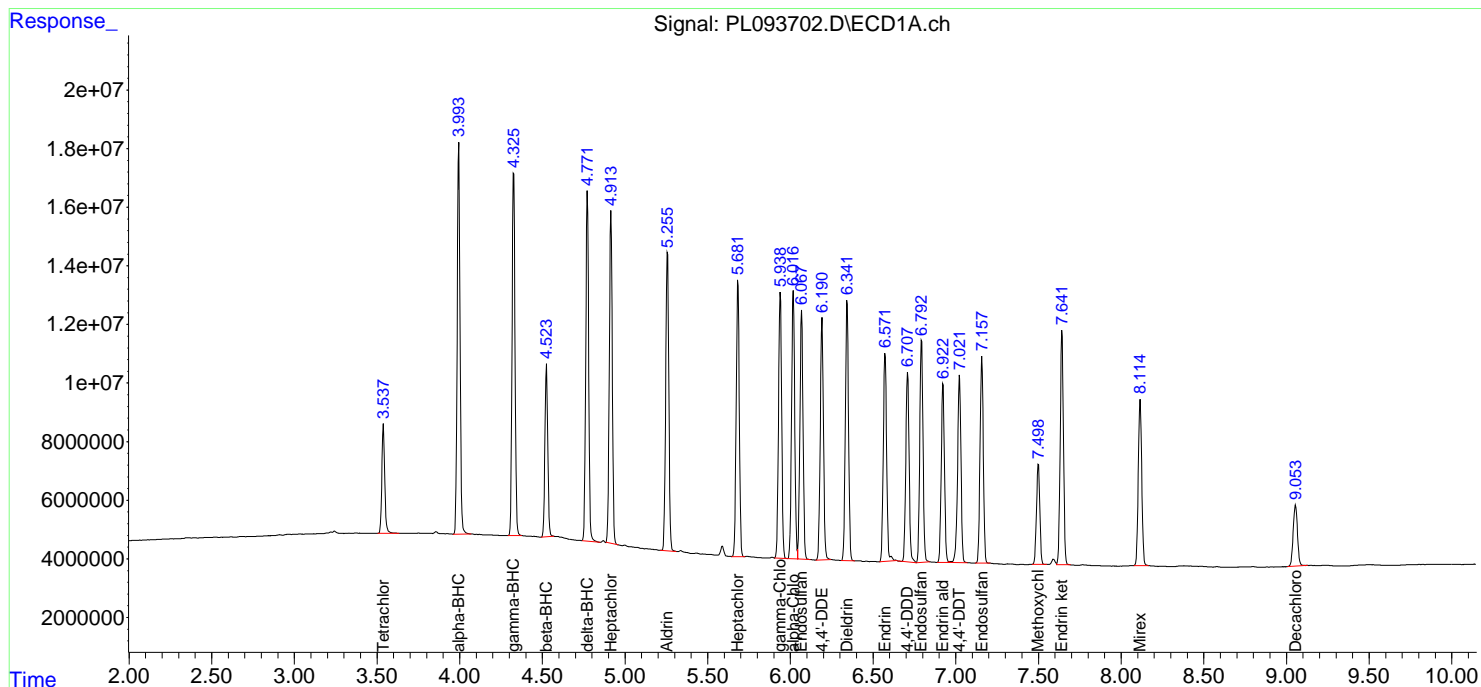
(f)=RT Delta > 1/2 Window (#)=Amounts differ by > 25% (m)=manual int.

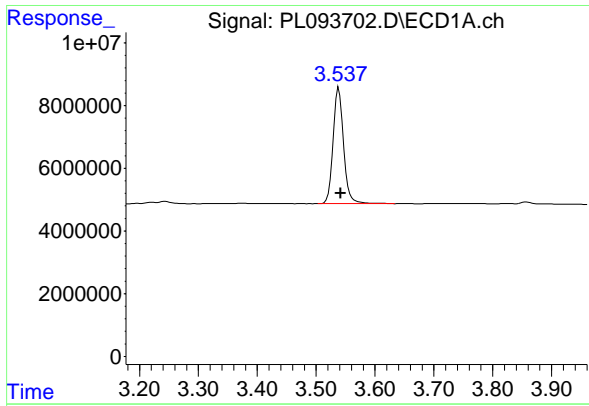
Data Path : Z:\pestpcbsrv\HPCHEM1\ECD_L\Data\PL012025\
 Data File : PL093702.D
 Signal(s) : Signal #1: ECD1A.ch Signal #2: ECD2B.ch
 Acq On : 20 Jan 2025 12:35
 Operator : AR\AJ
 Sample : PB166101BS
 Misc :
 ALS Vial : 10 Sample Multiplier: 1

Instrument :
 ECD_L
 ClientSampleId :
 PB166101BS

Integration File signal 1: autoint1.e
 Integration File signal 2: autoint2.e
 Quant Time: Jan 20 13:28:33 2025
 Quant Method : Z:\pestpcbsrv\HPCHEM1\ECD_L\methods\PL122324.M
 Quant Title : GC Extractables
 QLast Update : Tue Dec 24 15:29:41 2024
 Response via : Initial Calibration
 Integrator: ChemStation

Volume Inj. : 1 µl
 Signal #1 Phase : ZB-MR1 Signal #2 Phase: ZB-MR2
 Signal #1 Info : 30M x 0.32mm x0.5 Signal #2 Info : 30M x 0.32mm x0.25µm

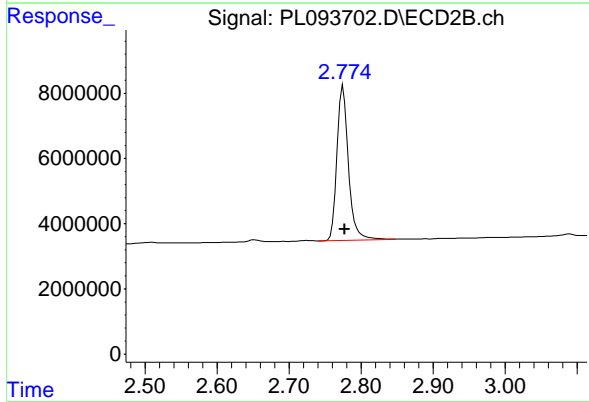




#1 Tetrachloro-m-xylene

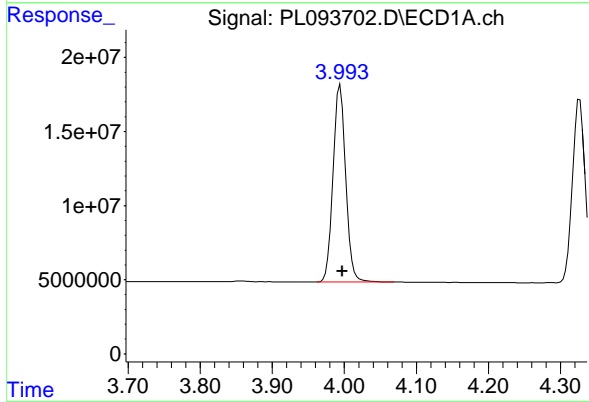
R.T.: 3.539 min
 Delta R.T.: -0.003 min
 Response: 45659025
 Conc: 18.44 ng/ml

Instrument :
 ECD_L
 ClientSampleId :
 PB166101BS



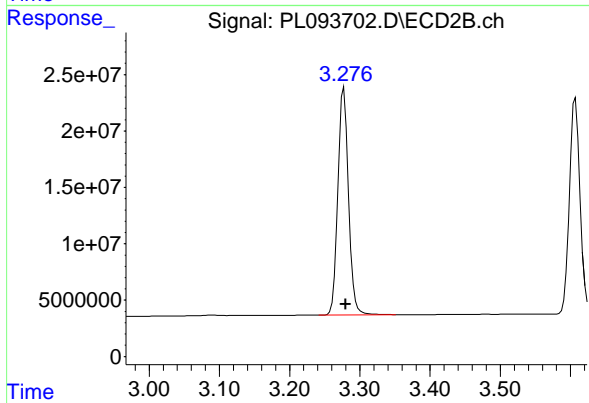
#1 Tetrachloro-m-xylene

R.T.: 2.775 min
 Delta R.T.: -0.002 min
 Response: 52096414
 Conc: 17.90 ng/ml



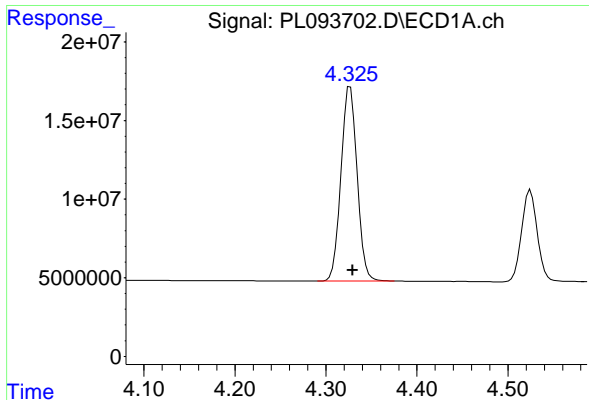
#2 alpha-BHC

R.T.: 3.994 min
 Delta R.T.: -0.003 min
 Response: 160858274
 Conc: 46.59 ng/ml



#2 alpha-BHC

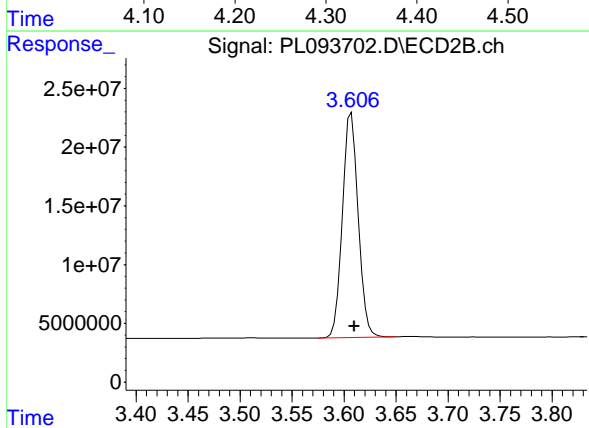
R.T.: 3.277 min
 Delta R.T.: -0.003 min
 Response: 211545764
 Conc: 48.67 ng/ml



#3 gamma-BHC (Lindane)

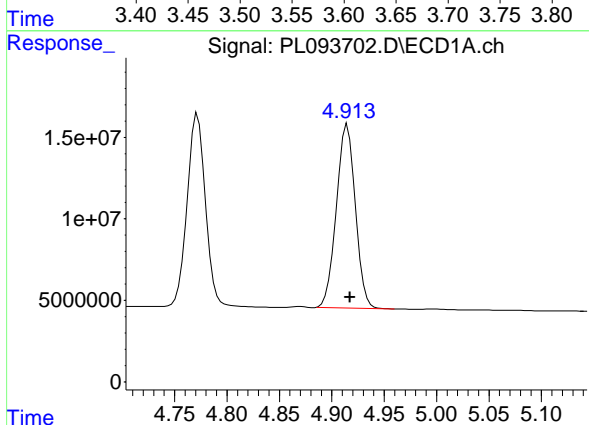
R.T.: 4.327 min
 Delta R.T.: -0.003 min
 Response: 152413816
 Conc: 46.48 ng/ml

Instrument :
 ECD_L
 ClientSampleId :
 PB166101BS



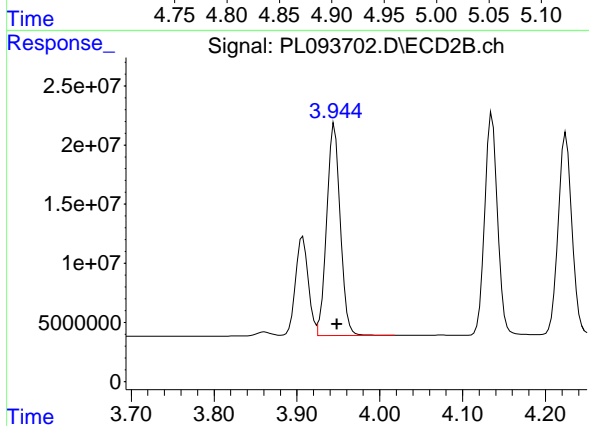
#3 gamma-BHC (Lindane)

R.T.: 3.607 min
 Delta R.T.: -0.003 min
 Response: 202072264
 Conc: 47.89 ng/ml



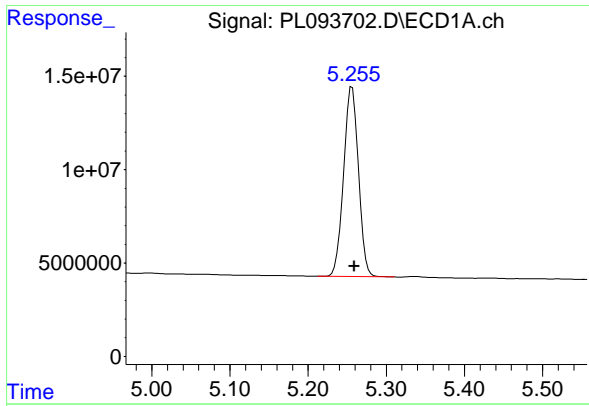
#4 Heptachlor

R.T.: 4.915 min
 Delta R.T.: -0.003 min
 Response: 141198444
 Conc: 48.22 ng/ml



#4 Heptachlor

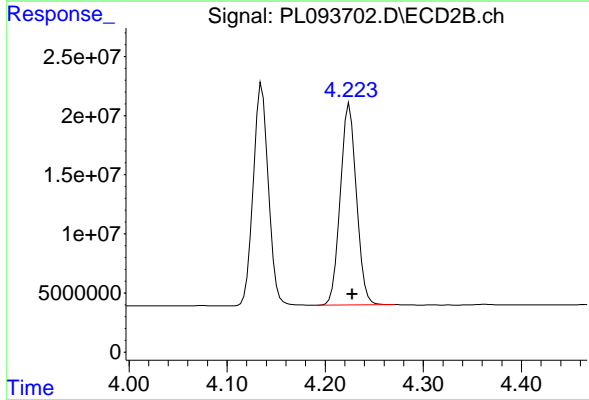
R.T.: 3.945 min
 Delta R.T.: -0.003 min
 Response: 204109850
 Conc: 49.11 ng/ml



#5 Aldrin

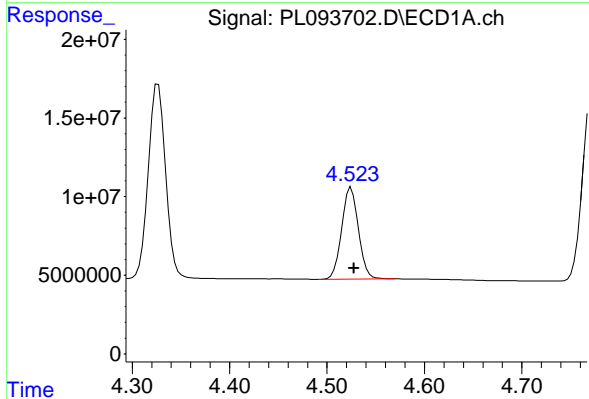
R.T.: 5.256 min
 Delta R.T.: -0.003 min
 Response: 134384220
 Conc: 46.20 ng/ml

Instrument :
 ECD_L
 ClientSampleId :
 PB166101BS



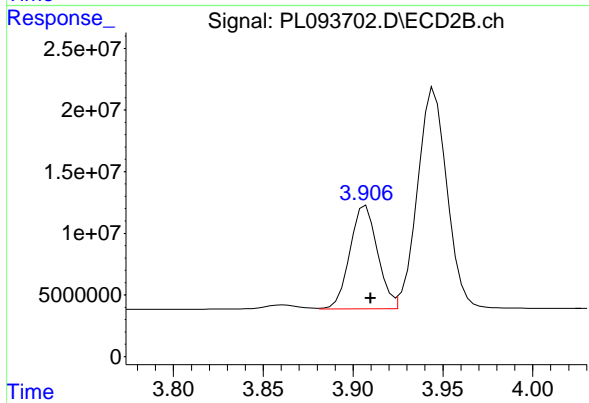
#5 Aldrin

R.T.: 4.225 min
 Delta R.T.: -0.003 min
 Response: 194656934
 Conc: 47.45 ng/ml



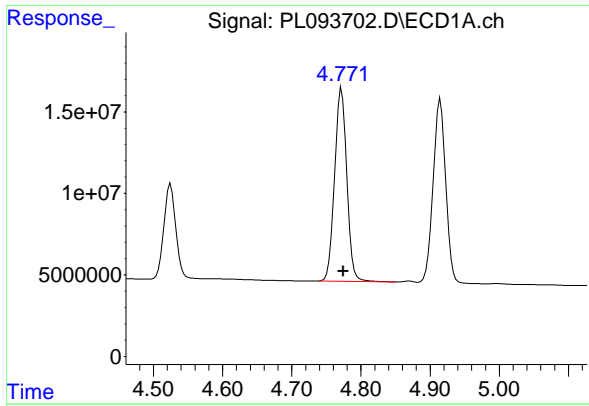
#6 beta-BHC

R.T.: 4.525 min
 Delta R.T.: -0.003 min
 Response: 69603796
 Conc: 48.28 ng/ml



#6 beta-BHC

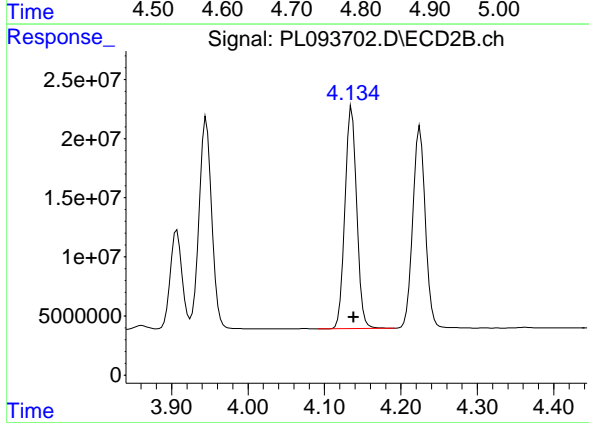
R.T.: 3.907 min
 Delta R.T.: -0.002 min
 Response: 89585123
 Conc: 49.84 ng/ml



#7 delta-BHC

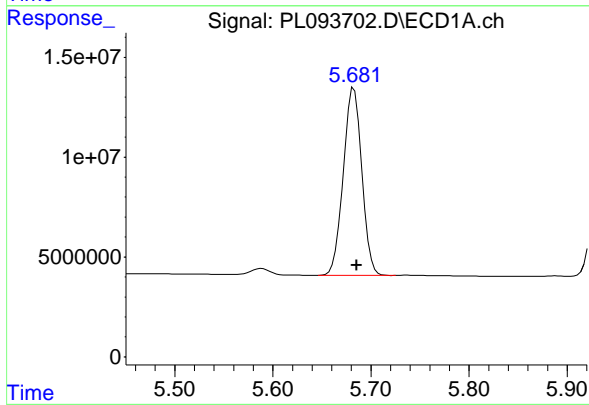
R.T.: 4.772 min
 Delta R.T.: -0.003 min
 Response: 144966540
 Conc: 47.33 ng/ml

Instrument :
 ECD_L
 ClientSampleId :
 PB166101BS



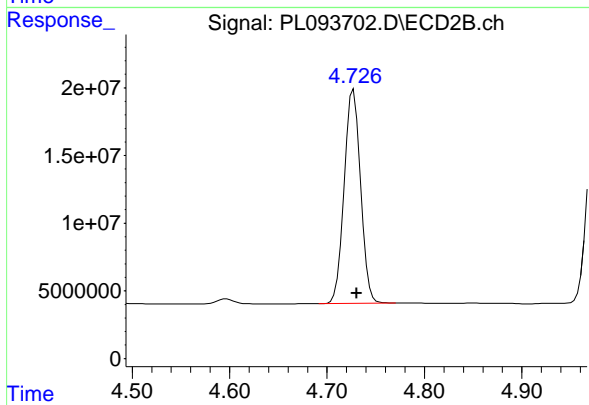
#7 delta-BHC

R.T.: 4.135 min
 Delta R.T.: -0.003 min
 Response: 201262829
 Conc: 47.59 ng/ml



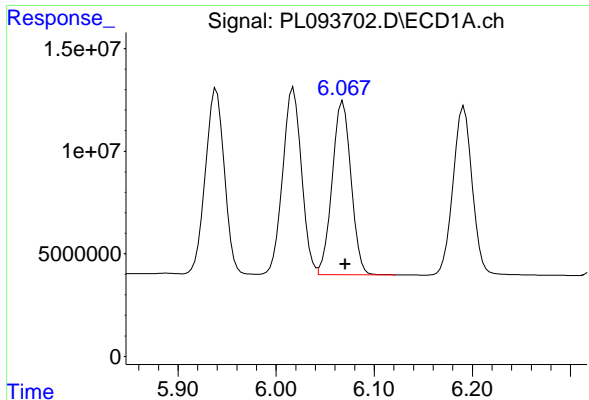
#8 Heptachlor epoxide

R.T.: 5.683 min
 Delta R.T.: -0.003 min
 Response: 123418877
 Conc: 46.85 ng/ml



#8 Heptachlor epoxide

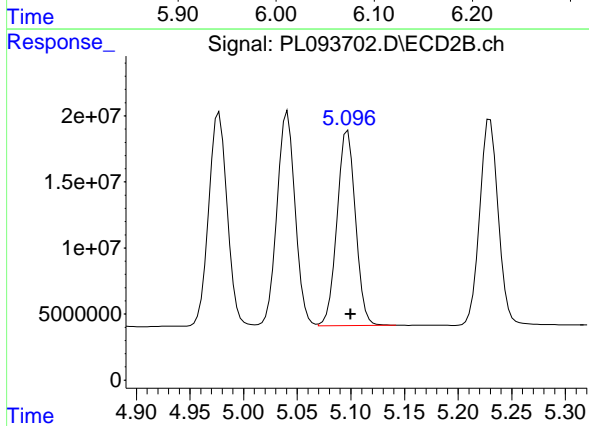
R.T.: 4.727 min
 Delta R.T.: -0.003 min
 Response: 184775092
 Conc: 48.26 ng/ml



#9 Endosulfan I

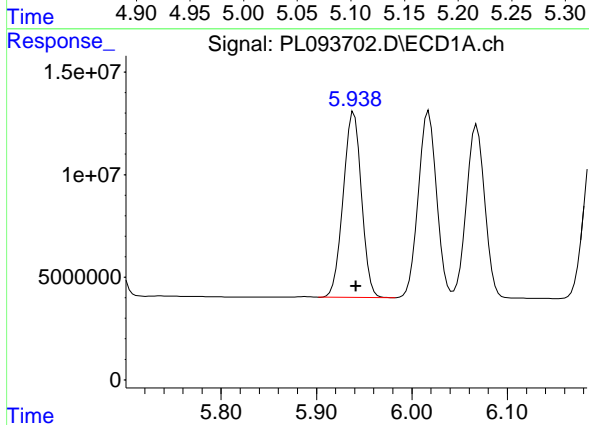
R.T.: 6.068 min
 Delta R.T.: -0.003 min
 Response: 112742686
 Conc: 47.79 ng/ml

Instrument :
 ECD_L
 ClientSampleId :
 PB166101BS



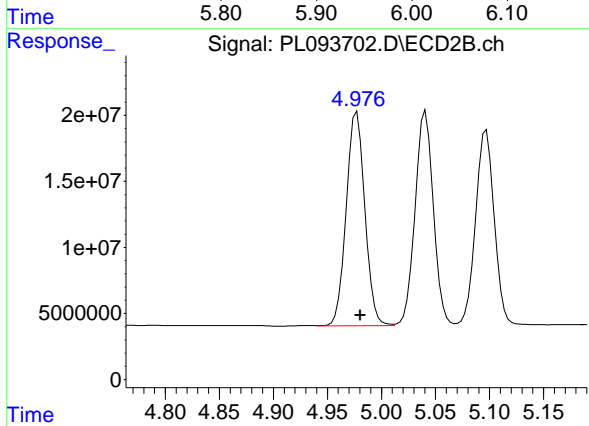
#9 Endosulfan I

R.T.: 5.097 min
 Delta R.T.: -0.003 min
 Response: 176647730
 Conc: 50.56 ng/ml



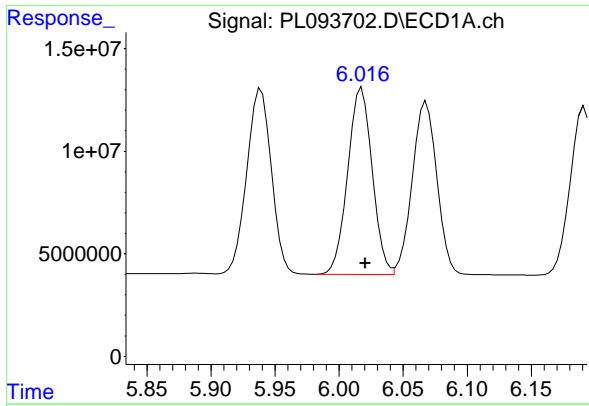
#10 gamma-Chlordane

R.T.: 5.939 min
 Delta R.T.: -0.002 min
 Response: 120747898
 Conc: 48.05 ng/ml



#10 gamma-Chlordane

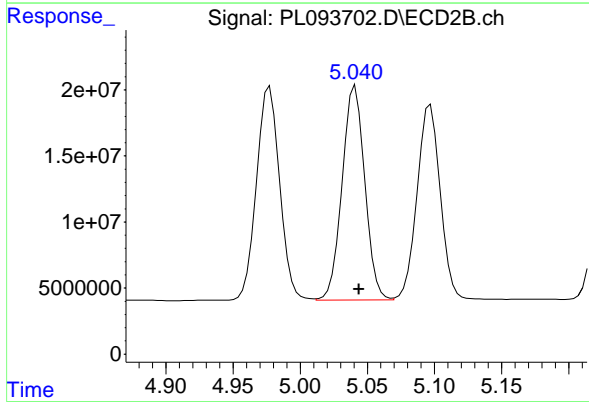
R.T.: 4.977 min
 Delta R.T.: -0.003 min
 Response: 194561180
 Conc: 50.50 ng/ml



#11 alpha-Chlordane

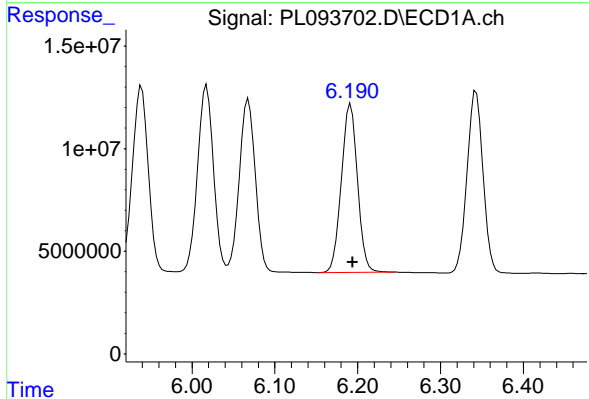
R.T.: 6.018 min
 Delta R.T.: -0.003 min
 Response: 120891033
 Conc: 48.30 ng/ml

Instrument :
 ECD_L
 ClientSampleId :
 PB166101BS



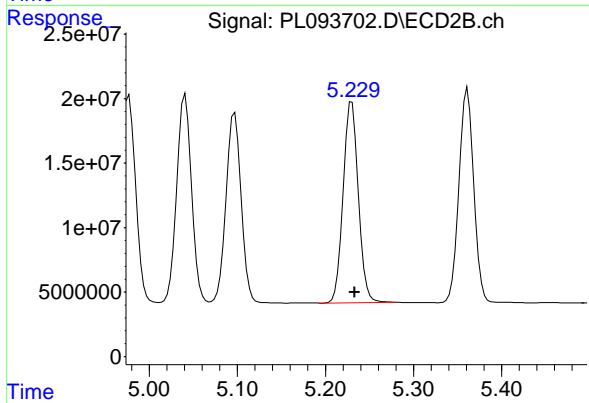
#11 alpha-Chlordane

R.T.: 5.041 min
 Delta R.T.: -0.003 min
 Response: 190991129
 Conc: 50.16 ng/ml



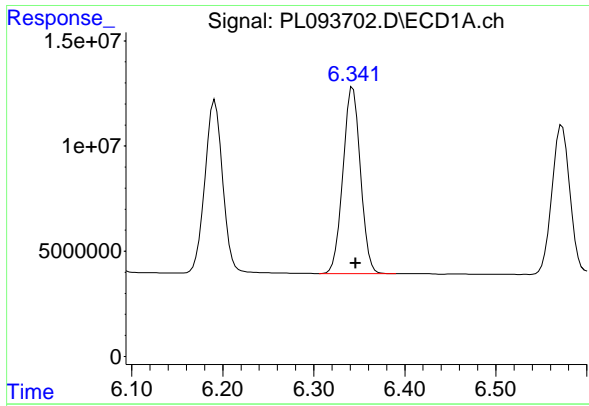
#12 4,4'-DDE

R.T.: 6.191 min
 Delta R.T.: -0.003 min
 Response: 111330083
 Conc: 49.62 ng/ml



#12 4,4'-DDE

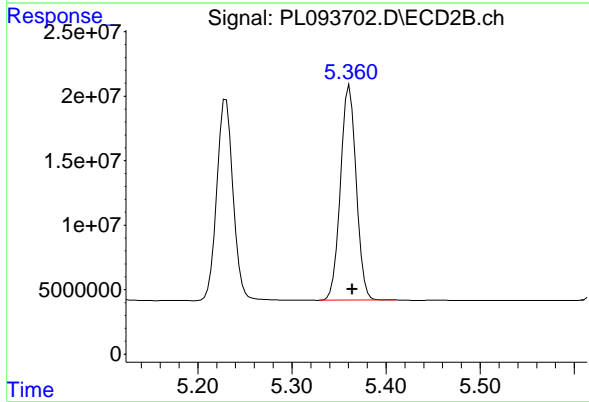
R.T.: 5.230 min
 Delta R.T.: -0.003 min
 Response: 186859432
 Conc: 50.82 ng/ml



#13 Dieldrin

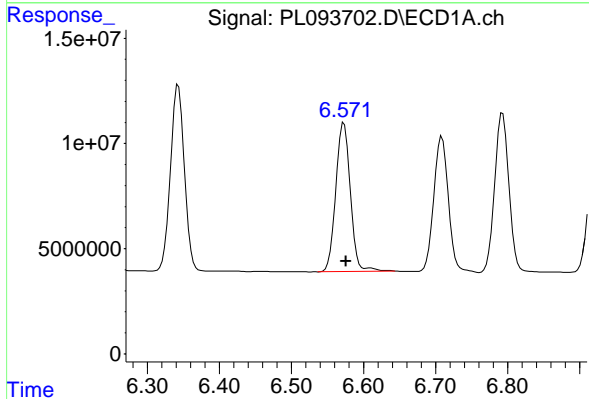
R.T.: 6.343 min
 Delta R.T.: -0.003 min
 Response: 118770773
 Conc: 47.60 ng/ml

Instrument : ECD_L
 ClientSampleId : PB166101BS



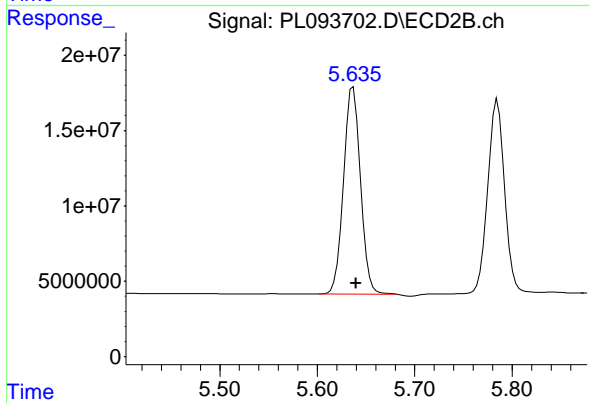
#13 Dieldrin

R.T.: 5.361 min
 Delta R.T.: -0.003 min
 Response: 193543883
 Conc: 50.22 ng/ml



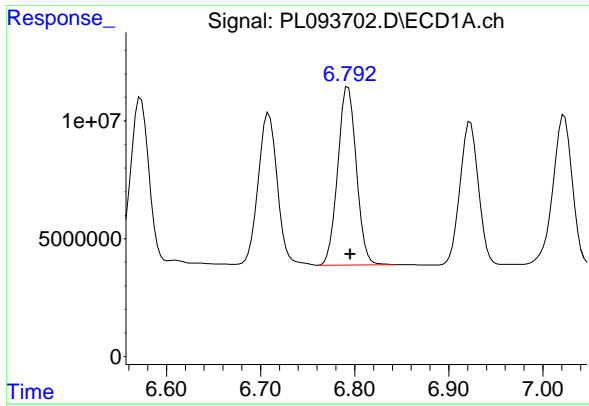
#14 Endrin

R.T.: 6.573 min
 Delta R.T.: -0.003 min
 Response: 98819142
 Conc: 45.91 ng/ml



#14 Endrin

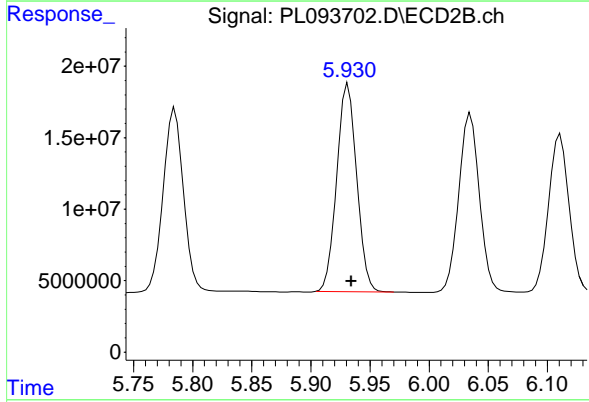
R.T.: 5.637 min
 Delta R.T.: -0.003 min
 Response: 165631540
 Conc: 50.06 ng/ml



#15 Endosulfan II

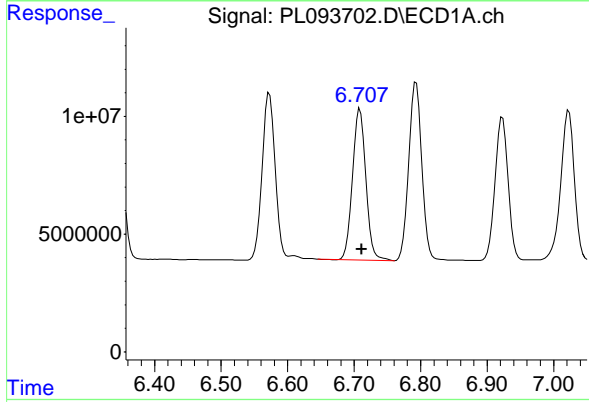
R.T.: 6.793 min
 Delta R.T.: -0.002 min
 Response: 103877354
 Conc: 45.70 ng/ml

Instrument :
 ECD_L
 ClientSampleId :
 PB166101BS



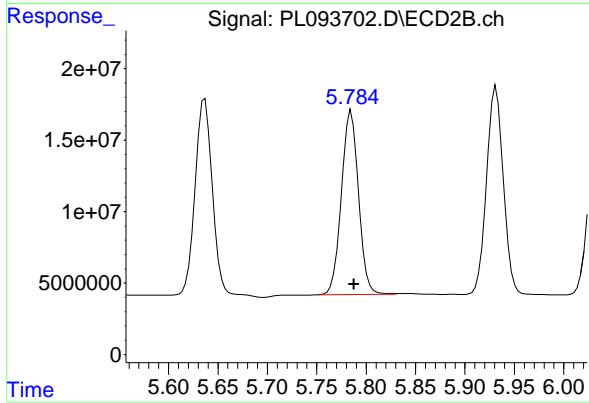
#15 Endosulfan II

R.T.: 5.932 min
 Delta R.T.: -0.003 min
 Response: 171068516
 Conc: 52.65 ng/ml



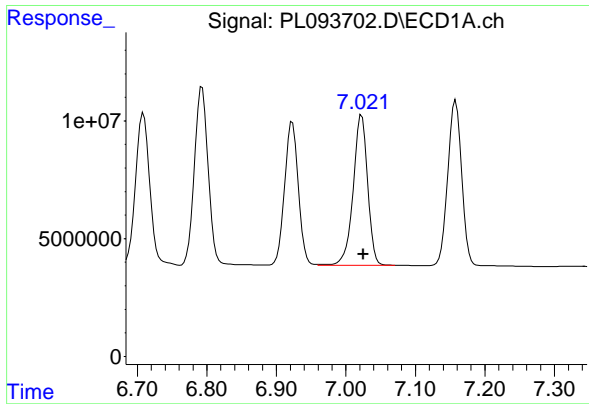
#16 4,4'-DDD

R.T.: 6.709 min
 Delta R.T.: -0.002 min
 Response: 90684502
 Conc: 51.64 ng/ml



#16 4,4'-DDD

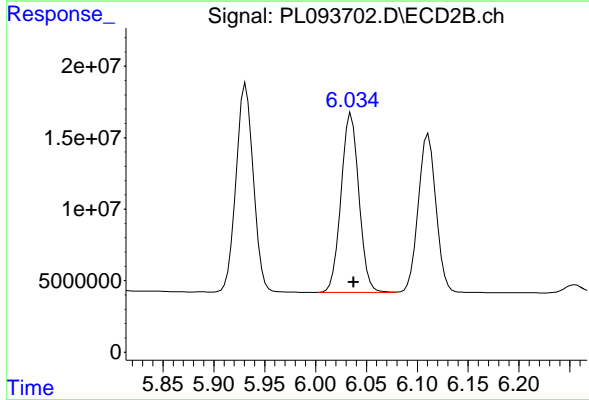
R.T.: 5.785 min
 Delta R.T.: -0.003 min
 Response: 154740321
 Conc: 54.68 ng/ml



#17 4,4' -DDT

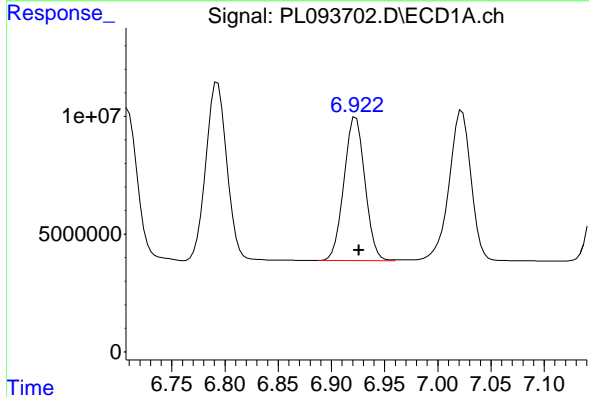
R.T.: 7.023 min
 Delta R.T.: -0.002 min
 Response: 92051705
 Conc: 49.80 ng/ml

Instrument :
 ECD_L
 ClientSampleId :
 PB166101BS



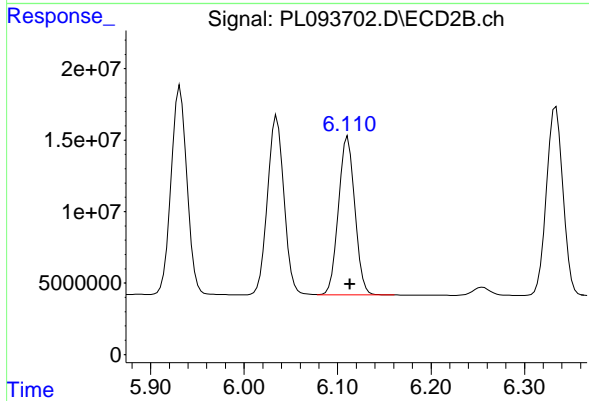
#17 4,4' -DDT

R.T.: 6.035 min
 Delta R.T.: -0.002 min
 Response: 153350016
 Conc: 50.77 ng/ml



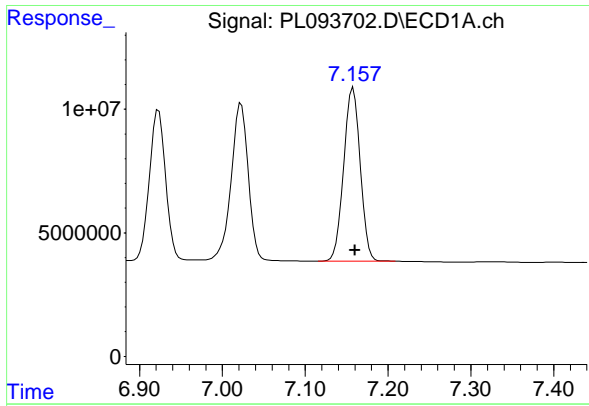
#18 Endrin aldehyde

R.T.: 6.923 min
 Delta R.T.: -0.003 min
 Response: 83191441
 Conc: 46.88 ng/ml



#18 Endrin aldehyde

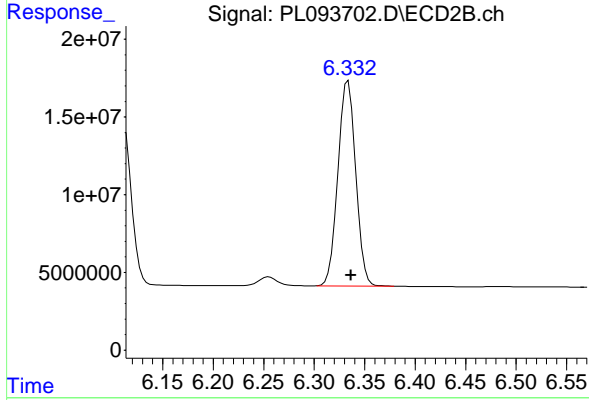
R.T.: 6.111 min
 Delta R.T.: -0.002 min
 Response: 134573083
 Conc: 49.97 ng/ml



#19 Endosulfan Sulfate

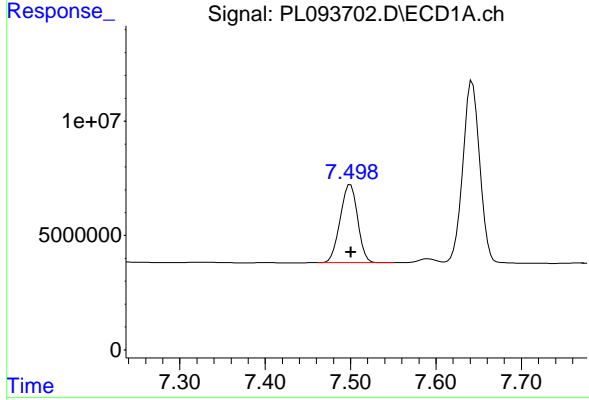
R.T.: 7.158 min
 Delta R.T.: -0.002 min
 Response: 97473401
 Conc: 48.28 ng/ml

Instrument :
 ECD_L
 ClientSampleId :
 PB166101BS



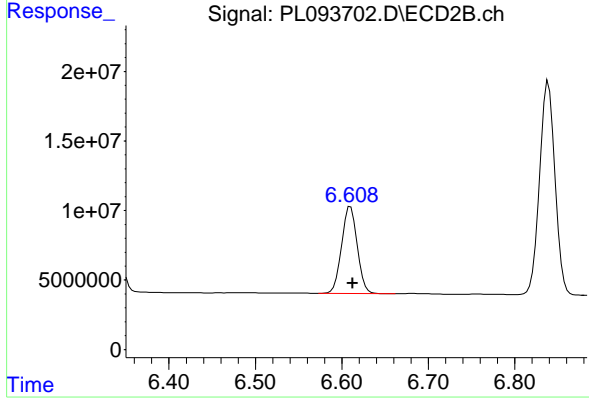
#19 Endosulfan Sulfate

R.T.: 6.334 min
 Delta R.T.: -0.003 min
 Response: 162349423
 Conc: 51.47 ng/ml



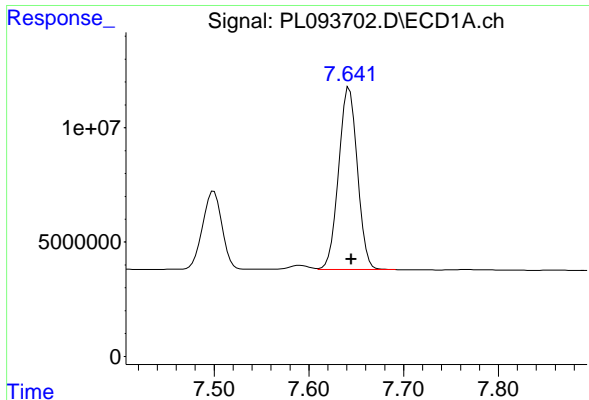
#20 Methoxychlor

R.T.: 7.500 min
 Delta R.T.: 0.000 min
 Response: 48462081
 Conc: 48.48 ng/ml



#20 Methoxychlor

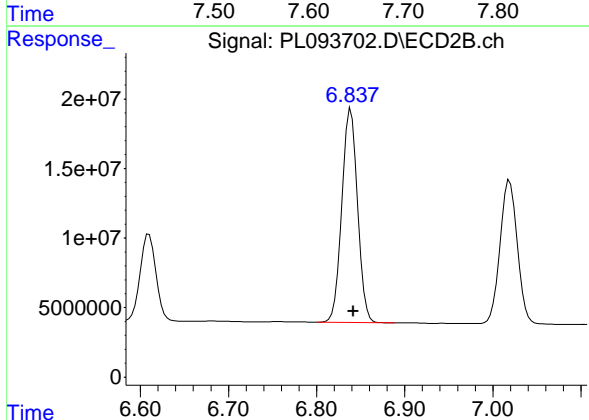
R.T.: 6.610 min
 Delta R.T.: -0.003 min
 Response: 77919647
 Conc: 48.41 ng/ml



#21 Endrin ketone

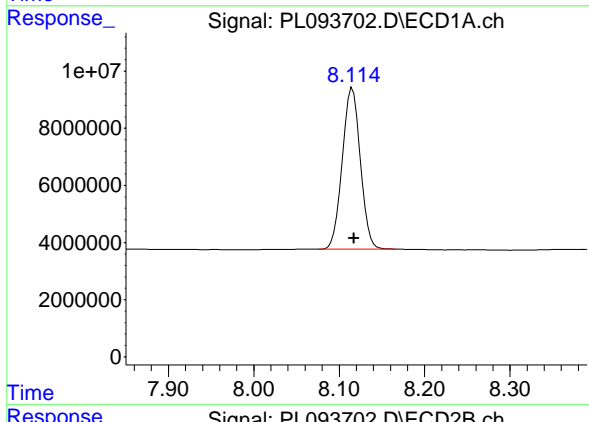
R.T.: 7.643 min
 Delta R.T.: -0.002 min
 Response: 109307083
 Conc: 48.71 ng/ml

Instrument :
 ECD_L
 ClientSampleId :
 PB166101BS



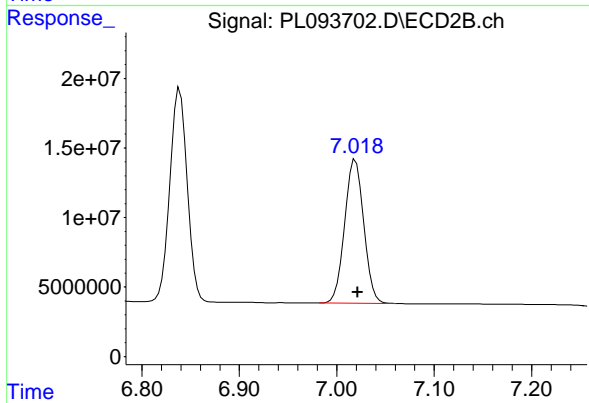
#21 Endrin ketone

R.T.: 6.839 min
 Delta R.T.: -0.003 min
 Response: 190338771
 Conc: 52.29 ng/ml



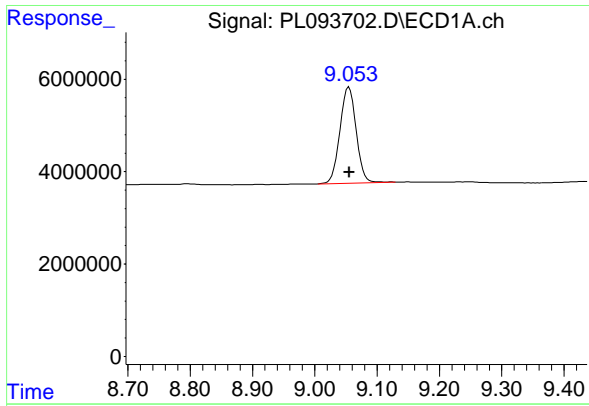
#22 Mirex

R.T.: 8.115 min
 Delta R.T.: -0.002 min
 Response: 83022085
 Conc: 44.43 ng/ml



#22 Mirex

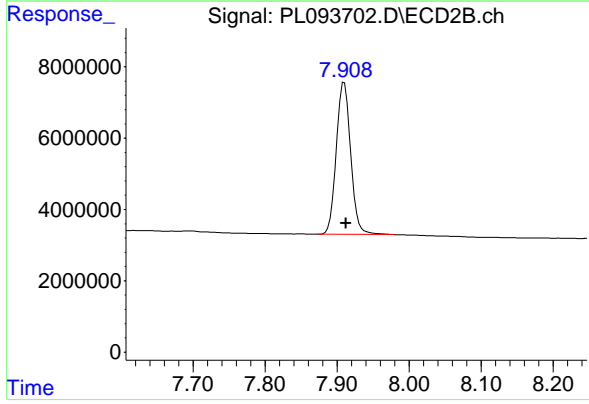
R.T.: 7.019 min
 Delta R.T.: -0.002 min
 Response: 140748884
 Conc: 46.05 ng/ml



#28 Decachlorobiphenyl

R.T.: 9.055 min
Delta R.T.: -0.001 min
Response: 37729400
Conc: 20.41 ng/ml

Instrument :
ECD_L
ClientSampleId :
PB166101BS



#28 Decachlorobiphenyl

R.T.: 7.910 min
Delta R.T.: -0.003 min
Response: 58906247
Conc: 19.73 ng/ml