

Data Path : Z:\pestpcbsrv\HPCHEM1\ECD_L\Data\PL012025\
 Data File : PL093703.D
 Signal(s) : Signal #1: ECD1A.ch Signal #2: ECD2B.ch
 Acq On : 20 Jan 2025 13:01
 Operator : AR\AJ
 Sample : PB166101BSD
 Misc :
 ALS Vial : 11 Sample Multiplier: 1

Instrument :
 ECD_L
 ClientSampleId :
 PB166101BSD

Integration File signal 1: autoint1.e
 Integration File signal 2: autoint2.e
 Quant Time: Jan 20 13:29:08 2025
 Quant Method : Z:\pestpcbsrv\HPCHEM1\ECD_L\methods\PL122324.M
 Quant Title : GC Extractables
 QLast Update : Tue Dec 24 15:29:41 2024
 Response via : Initial Calibration
 Integrator: ChemStation

Volume Inj. : 1 µl
 Signal #1 Phase : ZB-MR2 Signal #2 Phase: ZB-MR2
 Signal #1 Info : 30M x 0.32mm x0.5 Signal #2 Info : 30M x 0.32mm x0.25µm

Compound	RT#1	RT#2	Resp#1	Resp#2	ng/ml	ng/ml

System Monitoring Compounds						
1) SA Tetrachlo...	3.546	2.776	44696147	50441399	18.054	17.327
28) SA Decachlor...	9.060	7.912	37646880	58837435	20.360	19.705
Target Compounds						
2) A alpha-BHC	4.002	3.278	156.8E6	202.6E6	45.429	46.602
3) MA gamma-BHC...	4.335	3.608	148.5E6	193.3E6	45.291	45.804
4) MA Heptachlor	4.922	3.946	139.4E6	196.3E6	47.611	47.238
5) MB Aldrin	5.264	4.226	132.1E6	187.5E6	45.414	45.716
6) B beta-BHC	4.533	3.909	67488506	86298403	46.815	48.011
7) B delta-BHC	4.780	4.137	142.8E6	193.7E6	46.626	45.808
8) B Heptachlo...	5.690	4.729	122.1E6	179.2E6	46.349	46.816
9) A Endosulfan I	6.075	5.099	111.9E6	171.7E6	47.424	49.148
10) B gamma-Chl...	5.946	4.979	119.3E6	189.7E6	47.475	49.223
11) B alpha-Chl...	6.025	5.043	119.8E6	185.4E6	47.851	48.685
12) B 4,4'-DDE	6.198	5.231	109.6E6	181.5E6	48.835	49.368
13) MA Dieldrin	6.350	5.363	117.7E6	188.6E6	47.189	48.937
14) MA Endrin	6.580	5.639	98352065	162.5E6	45.693	49.110
15) B Endosulfa...	6.799	5.933	103.2E6	169.5E6	45.378	52.171
16) A 4,4'-DDD	6.715	5.787	88775986	151.5E6	50.557	53.537
17) MA 4,4'-DDT	7.030	6.037	90974478	151.5E6	49.215	50.162
18) B Endrin al...	6.930	6.113	82589910	133.2E6	46.542	49.445
19) B Endosulfa...	7.164	6.336	97214394	161.6E6	48.149	51.245
20) A Methoxychlor	7.505	6.612	48161382	77533971	48.177	48.169
21) B Endrin ke...	7.649	6.841	109.2E6	188.7E6	48.682	51.827
22) Mirex	8.122	7.021	83275473	140.8E6	44.563	46.062

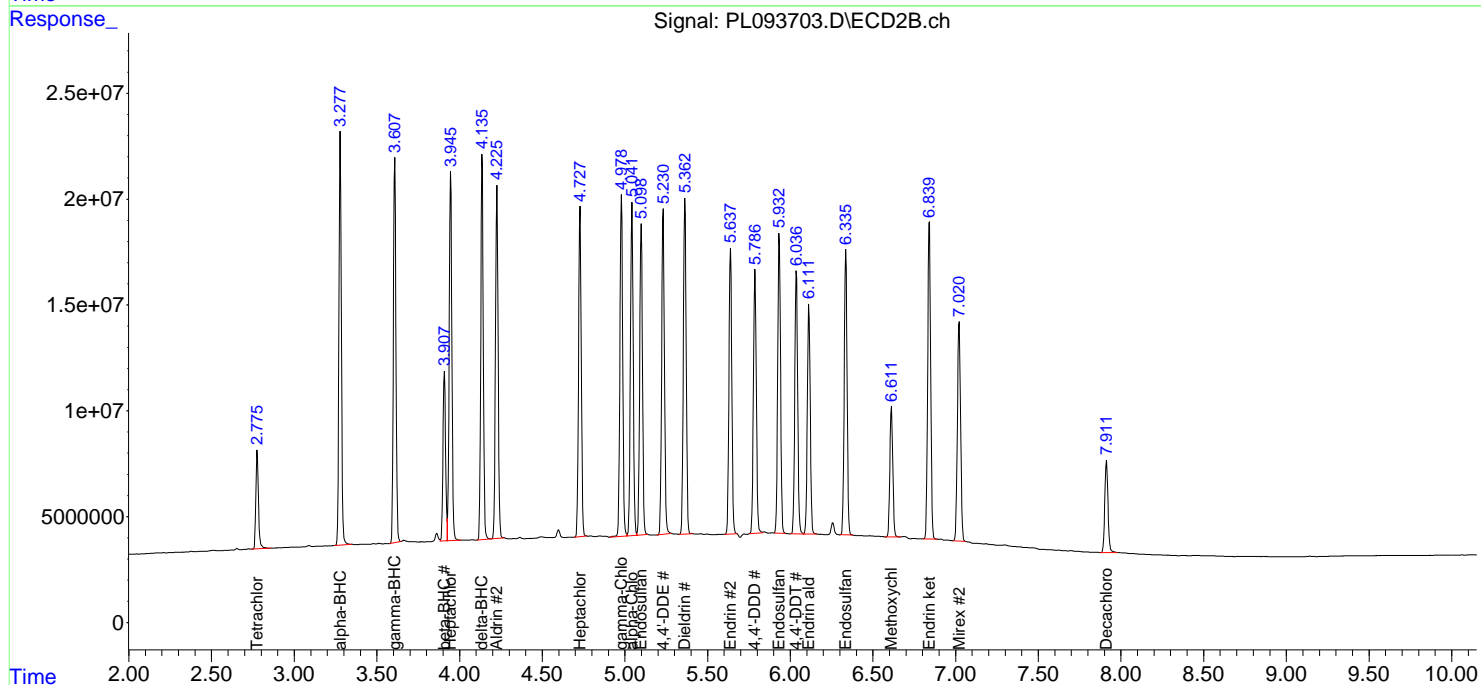
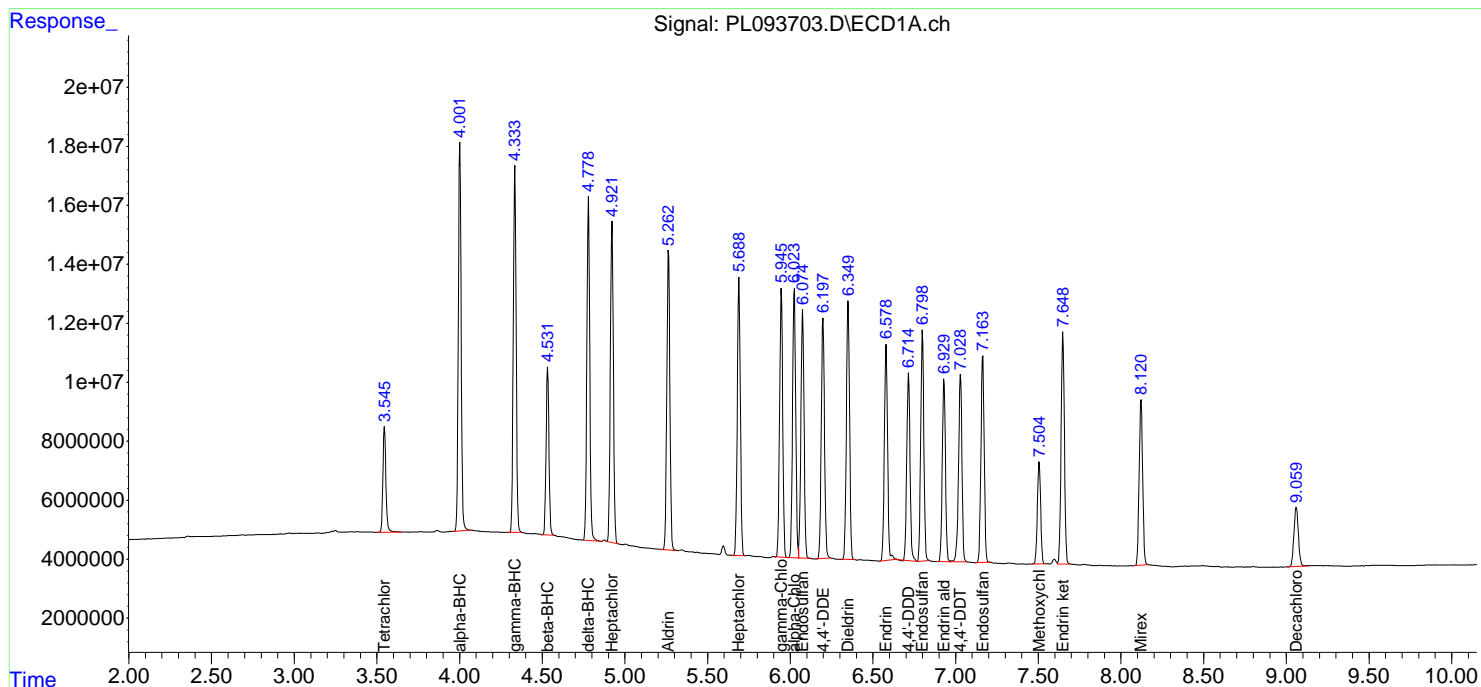
(f)=RT Delta > 1/2 Window (#)=Amounts differ by > 25% (m)=manual int.

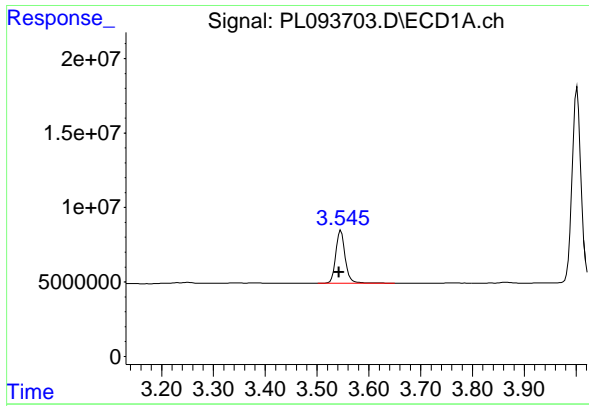
Data Path : Z:\pestpcbsrv\HPCHEM1\ECD_L\Data\PL012025\
 Data File : PL093703.D
 Signal(s) : Signal #1: ECD1A.ch Signal #2: ECD2B.ch
 Acq On : 20 Jan 2025 13:01
 Operator : AR\AJ
 Sample : PB166101BSD
 Misc :
 ALS Vial : 11 Sample Multiplier: 1

Instrument :
 ECD_L
 ClientSampleId :
 PB166101BSD

Integration File signal 1: autoint1.e
 Integration File signal 2: autoint2.e
 Quant Time: Jan 20 13:29:08 2025
 Quant Method : Z:\pestpcbsrv\HPCHEM1\ECD_L\methods\PL122324.M
 Quant Title : GC Extractables
 QLast Update : Tue Dec 24 15:29:41 2024
 Response via : Initial Calibration
 Integrator: ChemStation

Volume Inj. : 1 µl
 Signal #1 Phase : ZB-MR1 Signal #2 Phase: ZB-MR2
 Signal #1 Info : 30M x 0.32mm x0.5 Signal #2 Info : 30M x 0.32mm x0.25µm

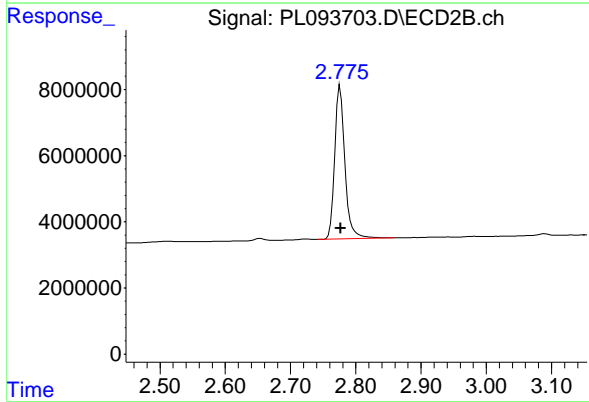




#1 Tetrachloro-m-xylene

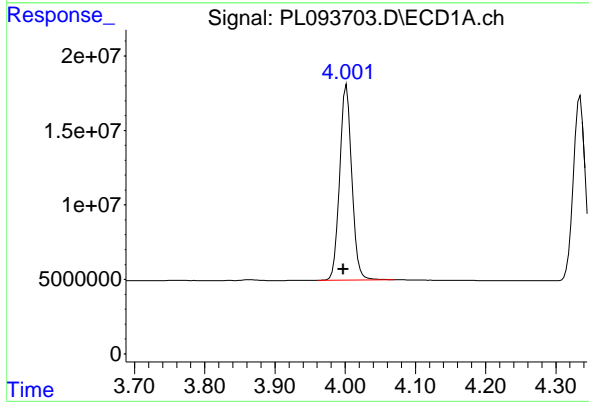
R.T.: 3.546 min
 Delta R.T.: 0.004 min
 Response: 44696147
 Conc: 18.05 ng/ml

Instrument :
 ECD_L
 ClientSampleId :
 PB166101BSD



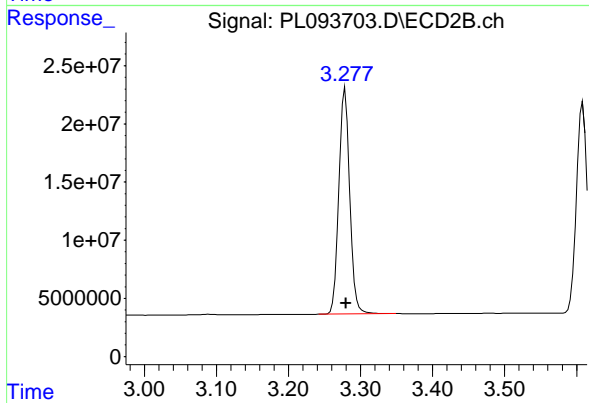
#1 Tetrachloro-m-xylene

R.T.: 2.776 min
 Delta R.T.: -0.001 min
 Response: 50441399
 Conc: 17.33 ng/ml



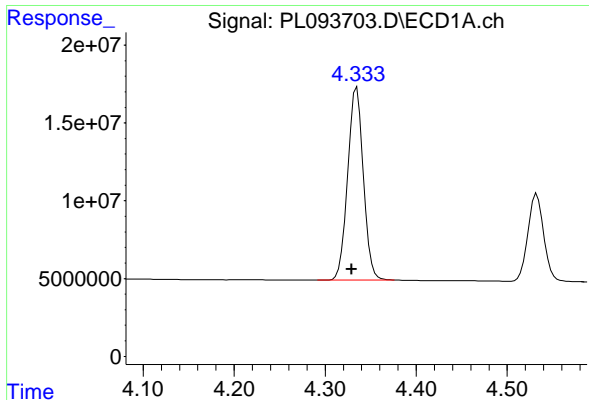
#2 alpha-BHC

R.T.: 4.002 min
 Delta R.T.: 0.005 min
 Response: 156837677
 Conc: 45.43 ng/ml



#2 alpha-BHC

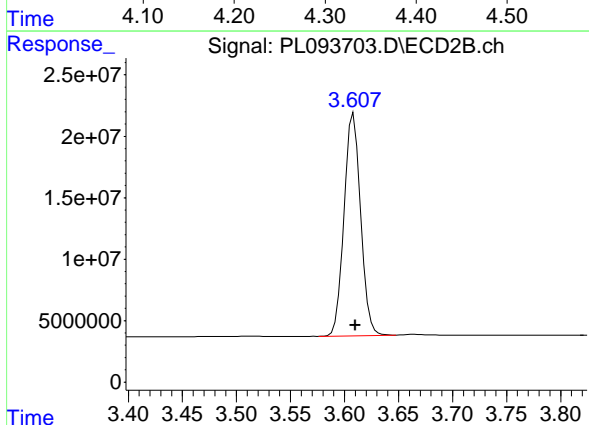
R.T.: 3.278 min
 Delta R.T.: -0.001 min
 Response: 202570396
 Conc: 46.60 ng/ml



#3 gamma-BHC (Lindane)

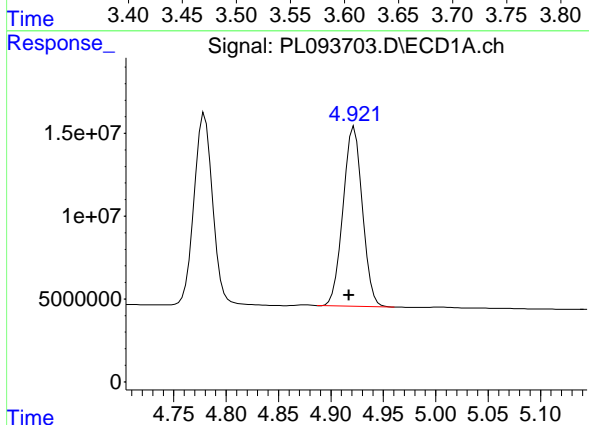
R.T.: 4.335 min
 Delta R.T.: 0.005 min
 Response: 148530216
 Conc: 45.29 ng/ml

Instrument :
 ECD_L
 ClientSampleId :
 PB166101BSD



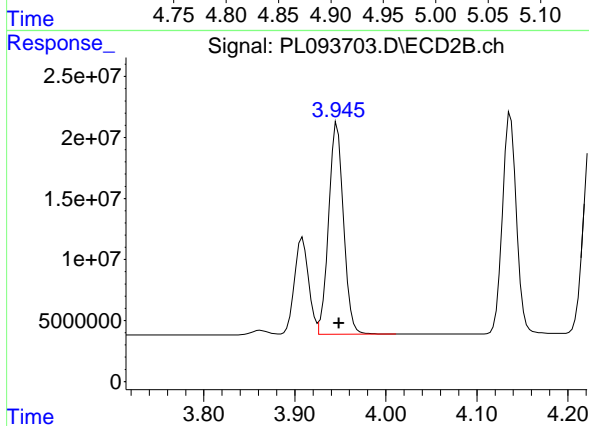
#3 gamma-BHC (Lindane)

R.T.: 3.608 min
 Delta R.T.: -0.001 min
 Response: 193263292
 Conc: 45.80 ng/ml



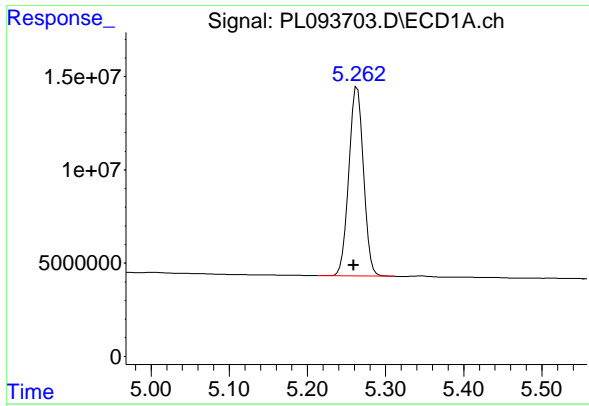
#4 Heptachlor

R.T.: 4.922 min
 Delta R.T.: 0.005 min
 Response: 139421035
 Conc: 47.61 ng/ml



#4 Heptachlor

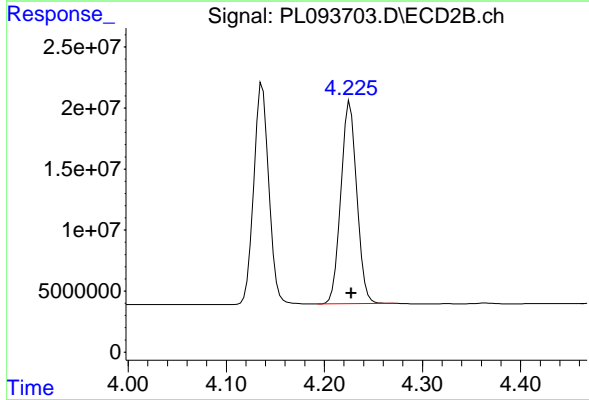
R.T.: 3.946 min
 Delta R.T.: -0.002 min
 Response: 196317220
 Conc: 47.24 ng/ml



#5 Aldrin

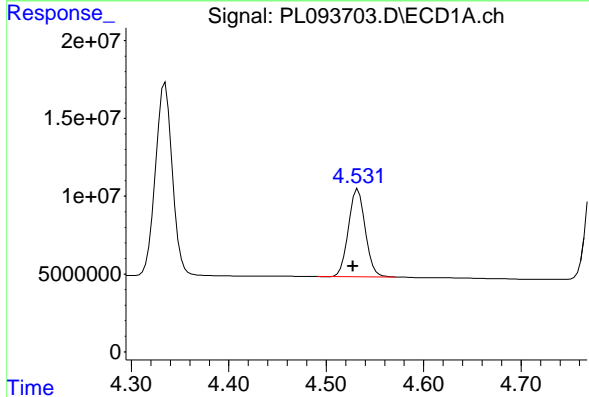
R.T.: 5.264 min
 Delta R.T.: 0.005 min
 Response: 132103895
 Conc: 45.41 ng/ml

Instrument :
 ECD_L
 ClientSampleId :
 PB166101BSD



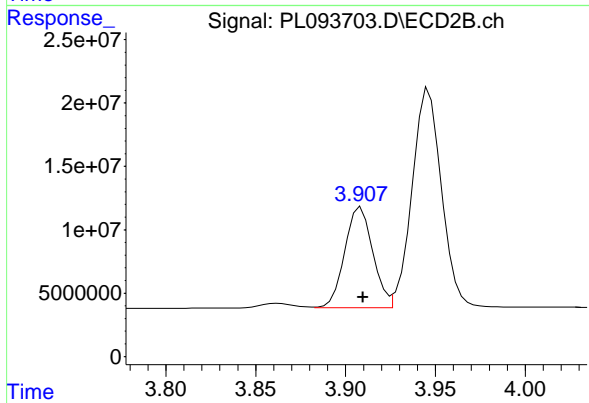
#5 Aldrin

R.T.: 4.226 min
 Delta R.T.: -0.001 min
 Response: 187539320
 Conc: 45.72 ng/ml



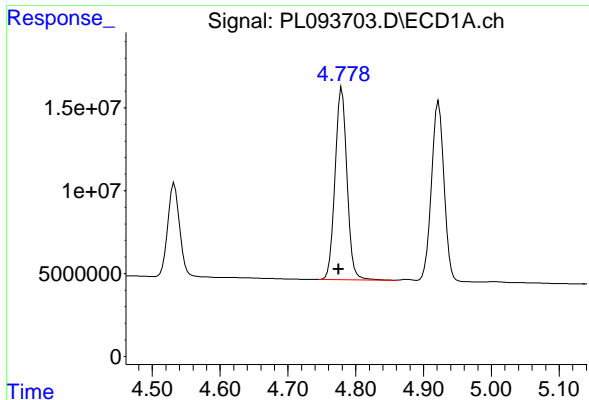
#6 beta-BHC

R.T.: 4.533 min
 Delta R.T.: 0.005 min
 Response: 67488506
 Conc: 46.82 ng/ml



#6 beta-BHC

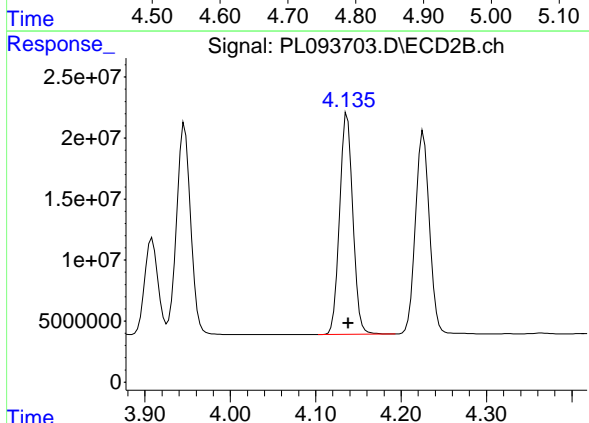
R.T.: 3.909 min
 Delta R.T.: -0.001 min
 Response: 86298403
 Conc: 48.01 ng/ml



#7 delta-BHC

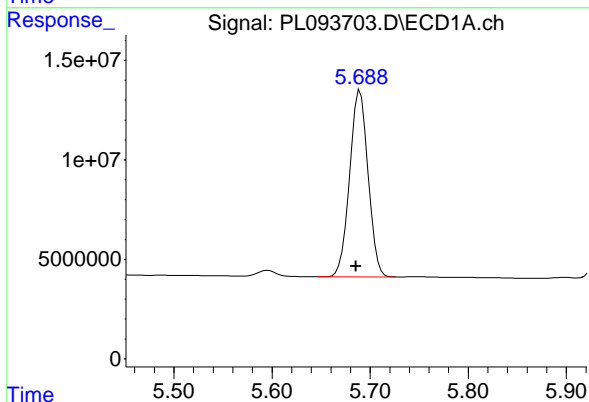
R.T.: 4.780 min
 Delta R.T.: 0.005 min
 Response: 142796528
 Conc: 46.63 ng/ml

Instrument :
 ECD_L
 ClientSampleId :
 PB166101BSD



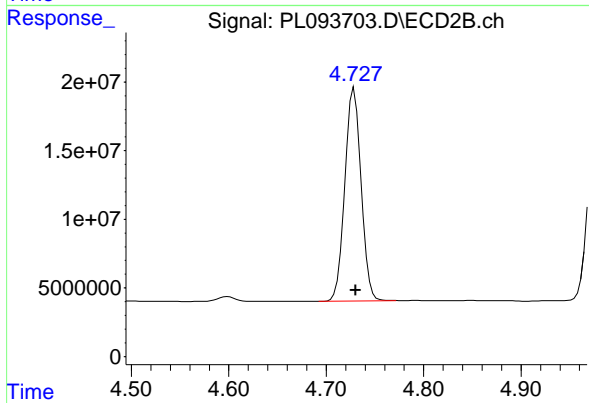
#7 delta-BHC

R.T.: 4.137 min
 Delta R.T.: -0.001 min
 Response: 193715399
 Conc: 45.81 ng/ml



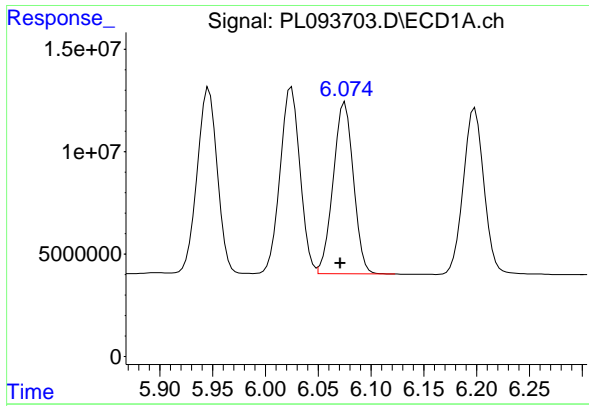
#8 Heptachlor epoxide

R.T.: 5.690 min
 Delta R.T.: 0.004 min
 Response: 122100920
 Conc: 46.35 ng/ml



#8 Heptachlor epoxide

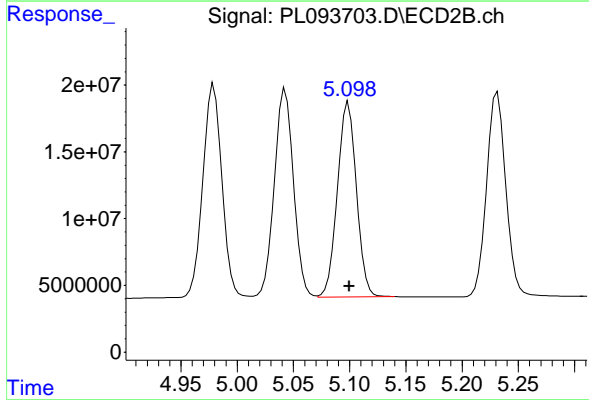
R.T.: 4.729 min
 Delta R.T.: -0.002 min
 Response: 179242760
 Conc: 46.82 ng/ml



#9 Endosulfan I

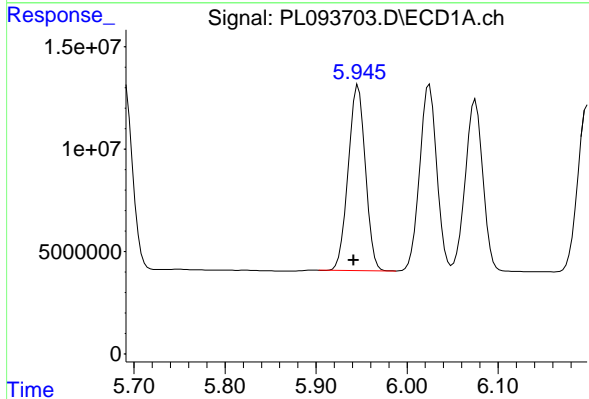
R.T.: 6.075 min
 Delta R.T.: 0.005 min
 Response: 111885830
 Conc: 47.42 ng/ml

Instrument :
 ECD_L
 ClientSampleId :
 PB166101BSD



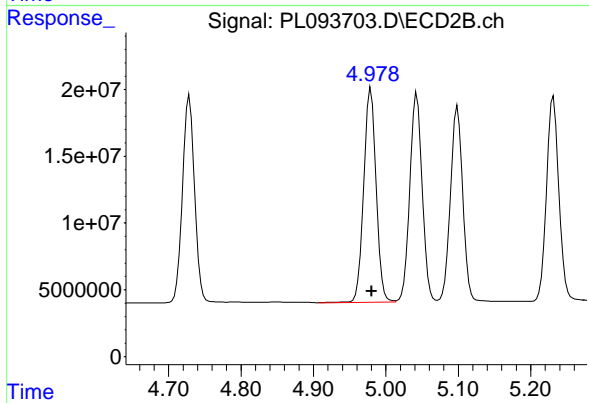
#9 Endosulfan I

R.T.: 5.099 min
 Delta R.T.: -0.001 min
 Response: 171722103
 Conc: 49.15 ng/ml



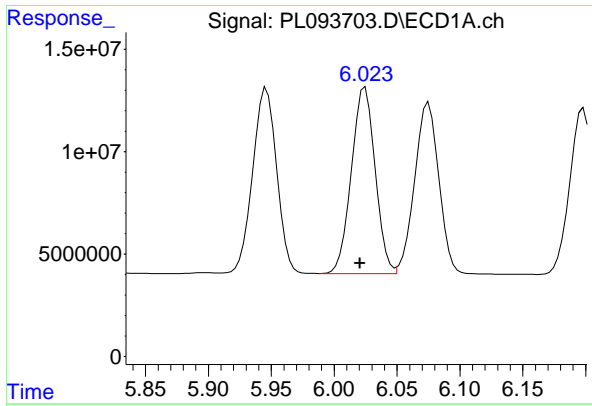
#10 gamma-Chlordane

R.T.: 5.946 min
 Delta R.T.: 0.005 min
 Response: 119308894
 Conc: 47.47 ng/ml



#10 gamma-Chlordane

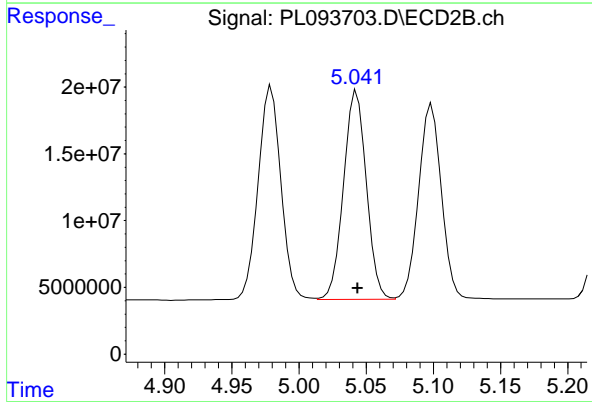
R.T.: 4.979 min
 Delta R.T.: -0.001 min
 Response: 189656814
 Conc: 49.22 ng/ml



#11 alpha-Chlordane

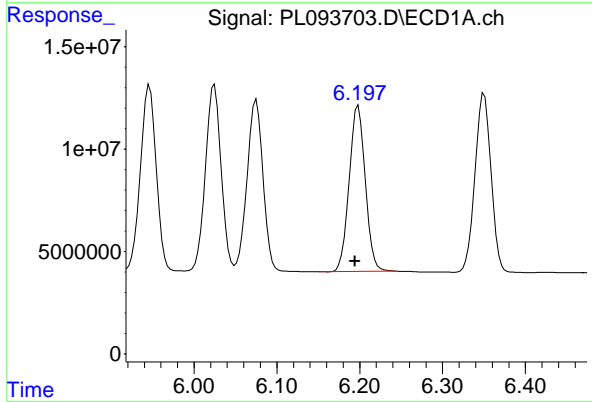
R.T.: 6.025 min
 Delta R.T.: 0.004 min
 Response: 119765418
 Conc: 47.85 ng/ml

Instrument :
 ECD_L
 ClientSampleId :
 PB166101BSD



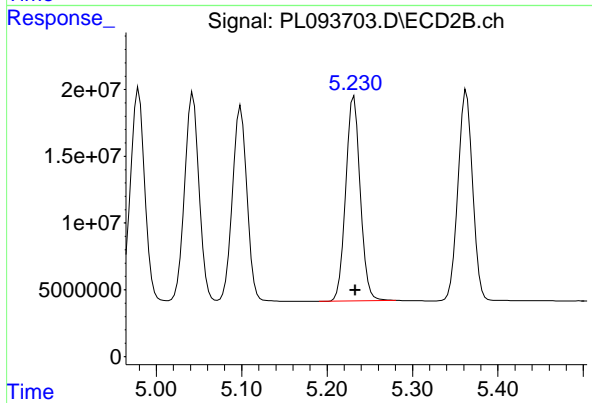
#11 alpha-Chlordane

R.T.: 5.043 min
 Delta R.T.: 0.000 min
 Response: 185364477
 Conc: 48.69 ng/ml



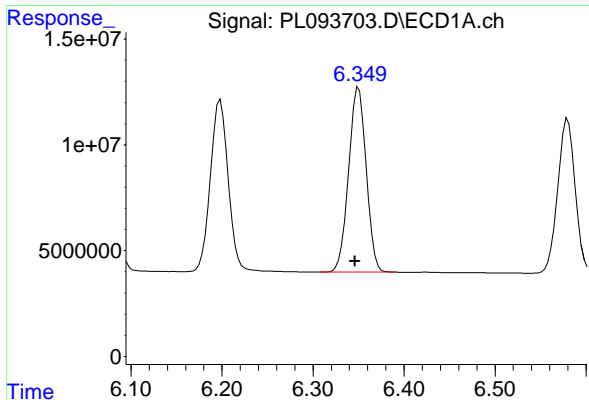
#12 4,4'-DDE

R.T.: 6.198 min
 Delta R.T.: 0.004 min
 Response: 109577756
 Conc: 48.83 ng/ml



#12 4,4'-DDE

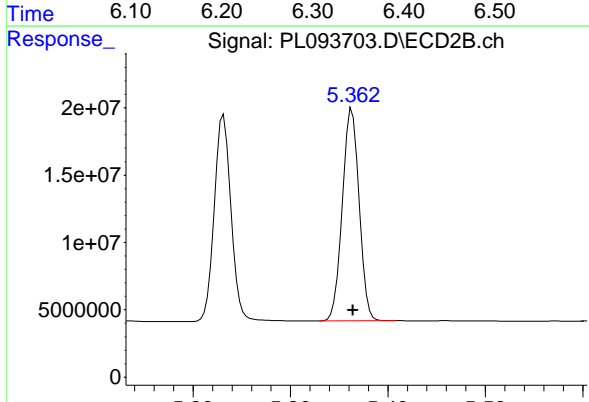
R.T.: 5.231 min
 Delta R.T.: -0.002 min
 Response: 181539293
 Conc: 49.37 ng/ml



#13 Dieldrin

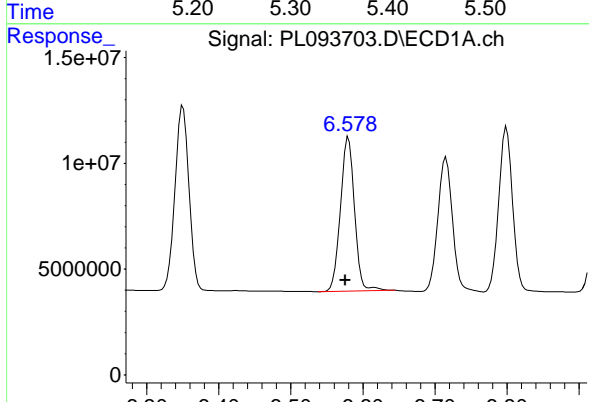
R.T.: 6.350 min
 Delta R.T.: 0.004 min
 Response: 117740689
 Conc: 47.19 ng/ml

Instrument :
 ECD_L
 ClientSampleId :
 PB166101BSD



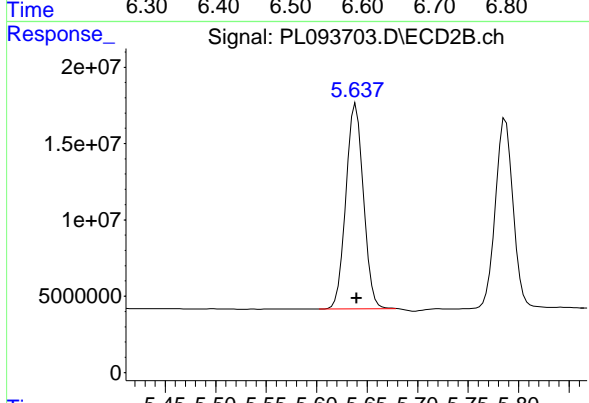
#13 Dieldrin

R.T.: 5.363 min
 Delta R.T.: 0.000 min
 Response: 188597957
 Conc: 48.94 ng/ml



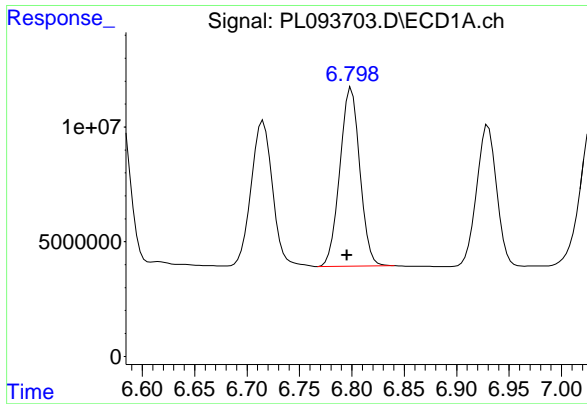
#14 Endrin

R.T.: 6.580 min
 Delta R.T.: 0.004 min
 Response: 98352065
 Conc: 45.69 ng/ml



#14 Endrin

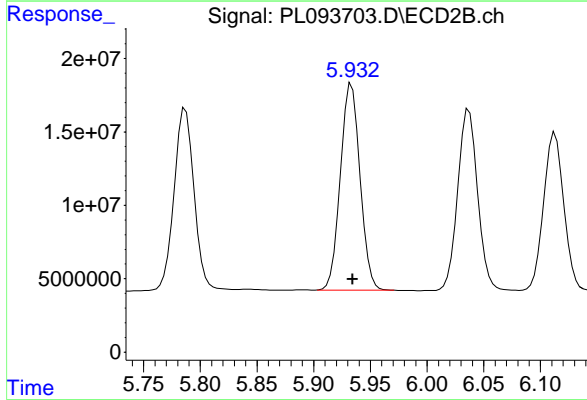
R.T.: 5.639 min
 Delta R.T.: 0.000 min
 Response: 162471063
 Conc: 49.11 ng/ml



#15 Endosulfan II

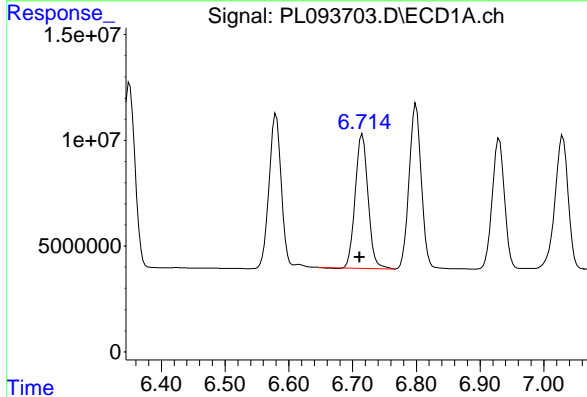
R.T.: 6.799 min
 Delta R.T.: 0.004 min
 Response: 103155326
 Conc: 45.38 ng/ml

Instrument :
 ECD_L
 ClientSampleId :
 PB166101BSD



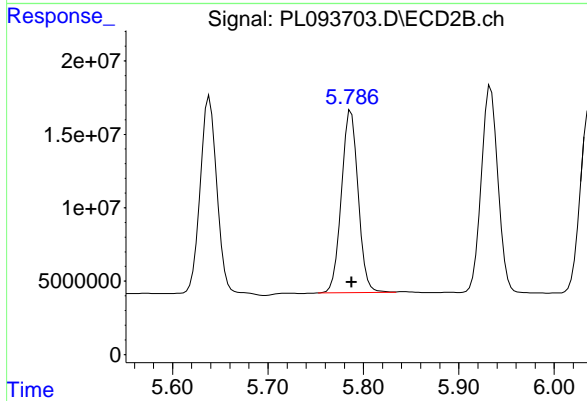
#15 Endosulfan II

R.T.: 5.933 min
 Delta R.T.: 0.000 min
 Response: 169500623
 Conc: 52.17 ng/ml



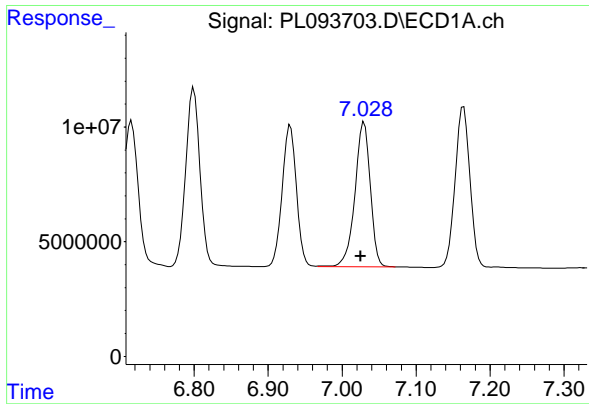
#16 4,4'-DDD

R.T.: 6.715 min
 Delta R.T.: 0.004 min
 Response: 88775986
 Conc: 50.56 ng/ml



#16 4,4'-DDD

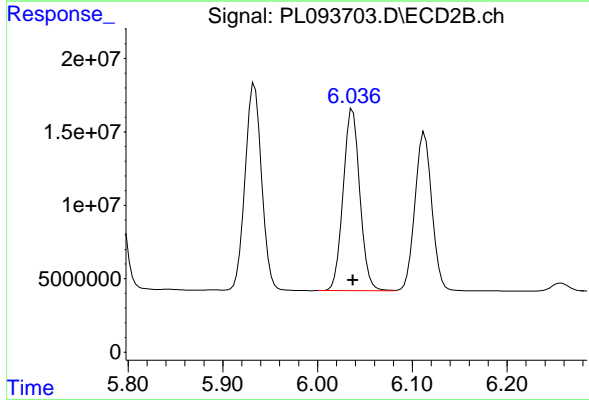
R.T.: 5.787 min
 Delta R.T.: 0.000 min
 Response: 151517142
 Conc: 53.54 ng/ml



#17 4,4' -DDT

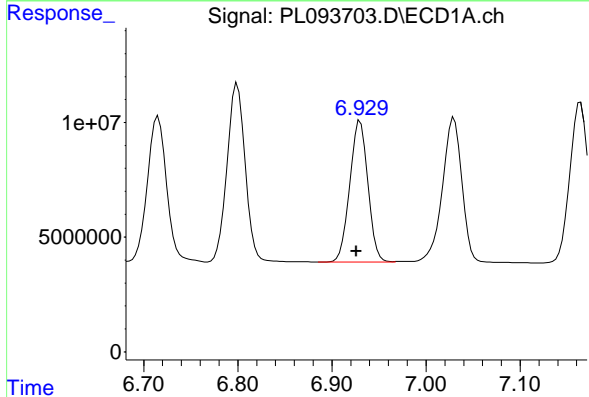
R.T.: 7.030 min
 Delta R.T.: 0.005 min
 Response: 90974478
 Conc: 49.21 ng/ml

Instrument :
 ECD_L
 ClientSampleId :
 PB166101BSD



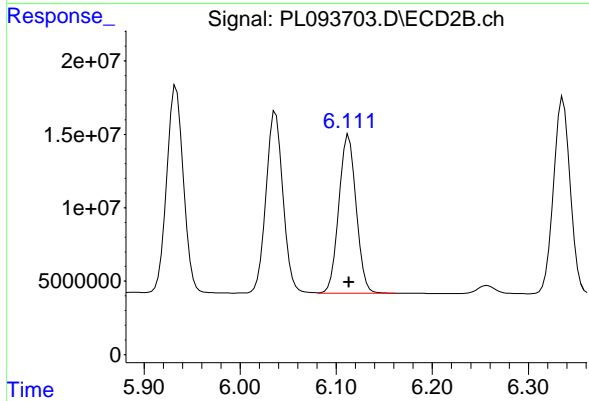
#17 4,4' -DDT

R.T.: 6.037 min
 Delta R.T.: 0.000 min
 Response: 151504293
 Conc: 50.16 ng/ml



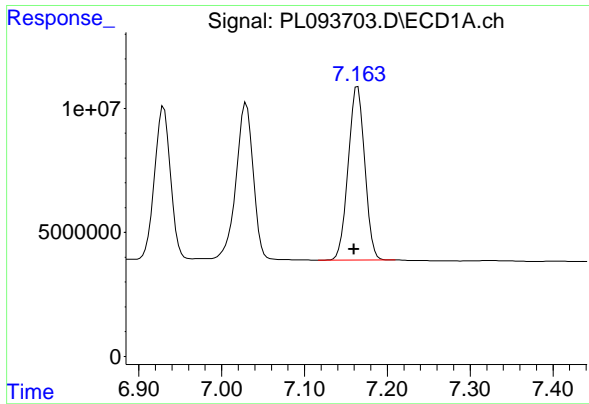
#18 Endrin aldehyde

R.T.: 6.930 min
 Delta R.T.: 0.004 min
 Response: 82589910
 Conc: 46.54 ng/ml



#18 Endrin aldehyde

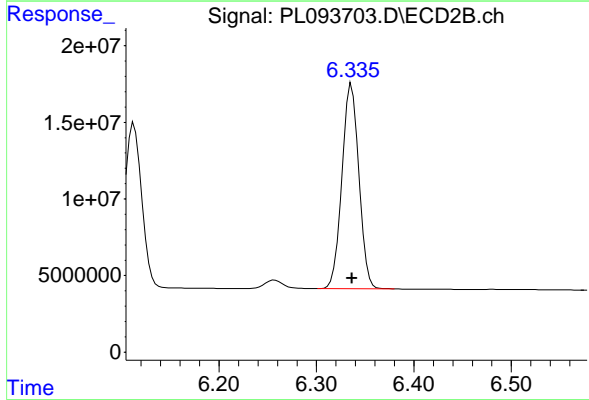
R.T.: 6.113 min
 Delta R.T.: 0.000 min
 Response: 133158764
 Conc: 49.44 ng/ml



#19 Endosulfan Sulfate

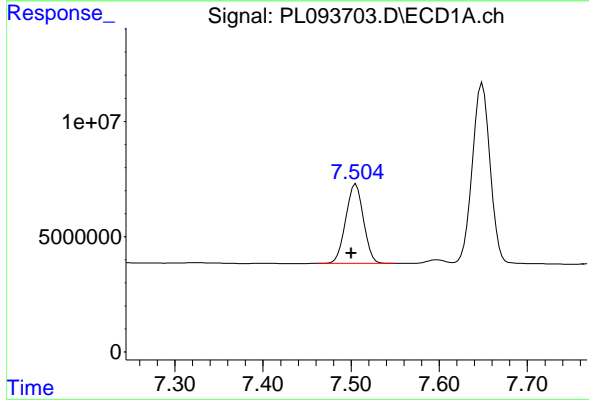
R.T.: 7.164 min
 Delta R.T.: 0.004 min
 Response: 97214394
 Conc: 48.15 ng/ml

Instrument : ECD_L
 ClientSampleId : PB166101BSD



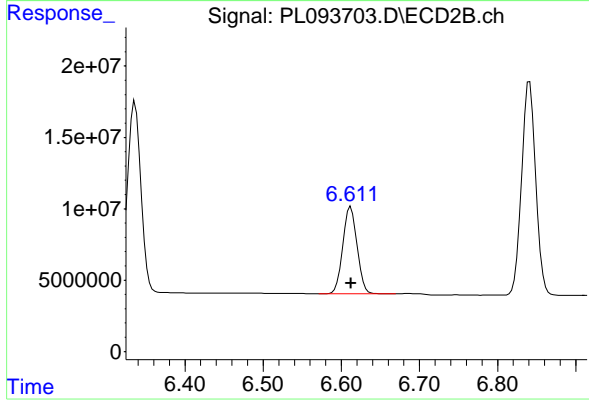
#19 Endosulfan Sulfate

R.T.: 6.336 min
 Delta R.T.: 0.000 min
 Response: 161646612
 Conc: 51.24 ng/ml



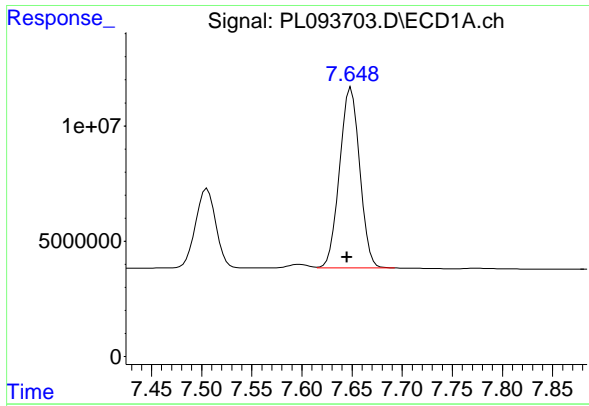
#20 Methoxychlor

R.T.: 7.505 min
 Delta R.T.: 0.005 min
 Response: 48161382
 Conc: 48.18 ng/ml



#20 Methoxychlor

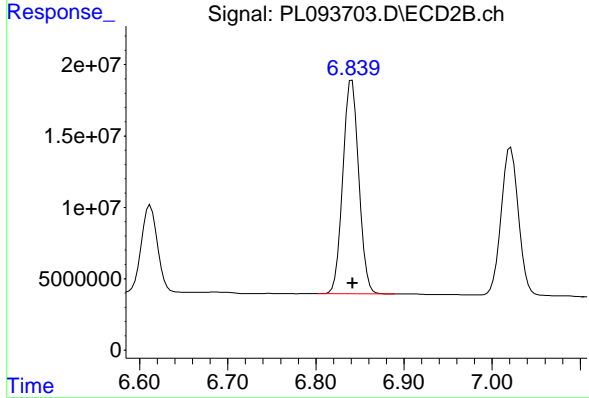
R.T.: 6.612 min
 Delta R.T.: 0.000 min
 Response: 77533971
 Conc: 48.17 ng/ml



#21 Endrin ketone

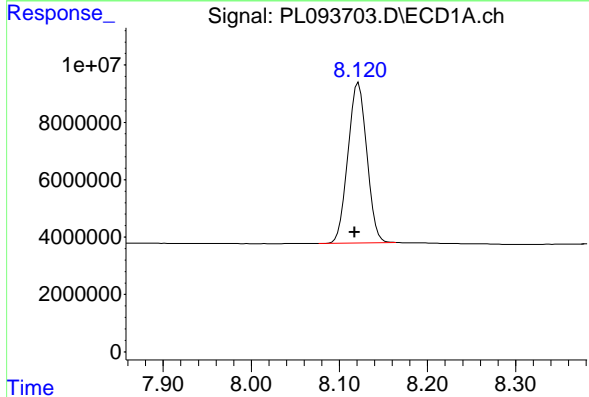
R.T.: 7.649 min
 Delta R.T.: 0.004 min
 Response: 109235254
 Conc: 48.68 ng/ml

Instrument :
 ECD_L
 ClientSampleId :
 PB166101BSD



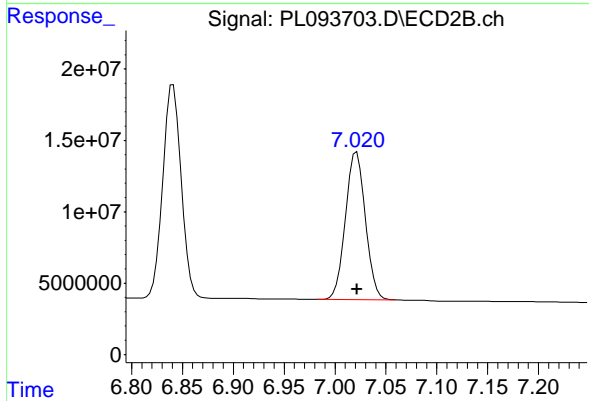
#21 Endrin ketone

R.T.: 6.841 min
 Delta R.T.: 0.000 min
 Response: 188670296
 Conc: 51.83 ng/ml



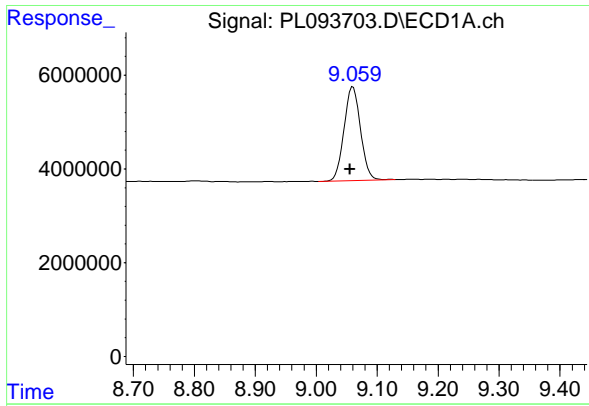
#22 Mirex

R.T.: 8.122 min
 Delta R.T.: 0.005 min
 Response: 83275473
 Conc: 44.56 ng/ml



#22 Mirex

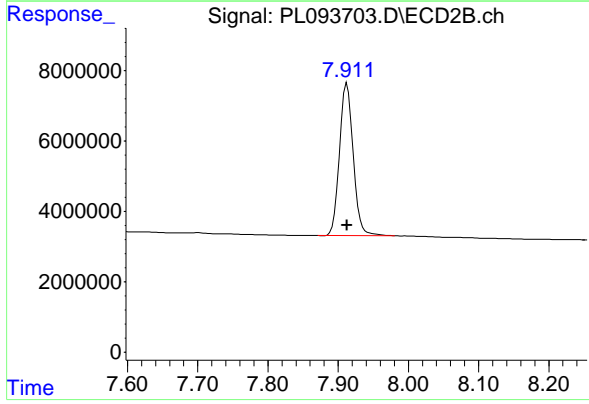
R.T.: 7.021 min
 Delta R.T.: 0.000 min
 Response: 140788265
 Conc: 46.06 ng/ml



#28 Decachlorobiphenyl

R.T.: 9.060 min
Delta R.T.: 0.005 min
Response: 37646880
Conc: 20.36 ng/ml

Instrument :
ECD_L
ClientSampleId :
PB166101BSD



#28 Decachlorobiphenyl

R.T.: 7.912 min
Delta R.T.: 0.000 min
Response: 58837435
Conc: 19.71 ng/ml