

Data Path : Z:\voasrv\HPCHEM1\MSVOA_X\Data\VX012725\
 Data File : VX044713.D
 Acq On : 27 Jan 2025 11:01
 Operator : JC/MD
 Sample : VX0127WBL01
 Misc : 5.0mL/MSVOA_X/WATER
 ALS Vial : 4 Sample Multiplier: 1

Instrument :
 MSVOA_X
 ClientSampleId :
 VX0127WBL01

Quant Time: Jan 28 04:08:04 2025
 Quant Method : Z:\voasrv\HPCHEM1\MSVOA_X\Method\82X011525W.M
 Quant Title : SW846 8260
 QLast Update : Thu Jan 16 01:16:09 2025
 Response via : Initial Calibration

Compound	R.T.	QIon	Response	Conc	Units	Dev(Min)

Internal Standards						
1) Pentafluorobenzene	5.544	168	158308	50.000	ug/l	0.00
34) 1,4-Difluorobenzene	6.757	114	315173	50.000	ug/l	0.00
63) Chlorobenzene-d5	10.049	117	280517	50.000	ug/l	0.00
72) 1,4-Dichlorobenzene-d4	12.018	152	124517	50.000	ug/l	0.00
System Monitoring Compounds						
33) 1,2-Dichloroethane-d4	5.946	65	113965	47.693	ug/l	0.00
Spiked Amount	50.000	Range 74 - 125	Recovery	=	95.380%	
35) Dibromofluoromethane	5.379	113	101022	50.454	ug/l	0.00
Spiked Amount	50.000	Range 75 - 124	Recovery	=	100.900%	
50) Toluene-d8	8.641	98	381089	54.586	ug/l	0.00
Spiked Amount	50.000	Range 86 - 113	Recovery	=	109.180%	
62) 4-Bromofluorobenzene	11.079	95	146098	56.135	ug/l	0.00
Spiked Amount	50.000	Range 77 - 121	Recovery	=	112.280%	

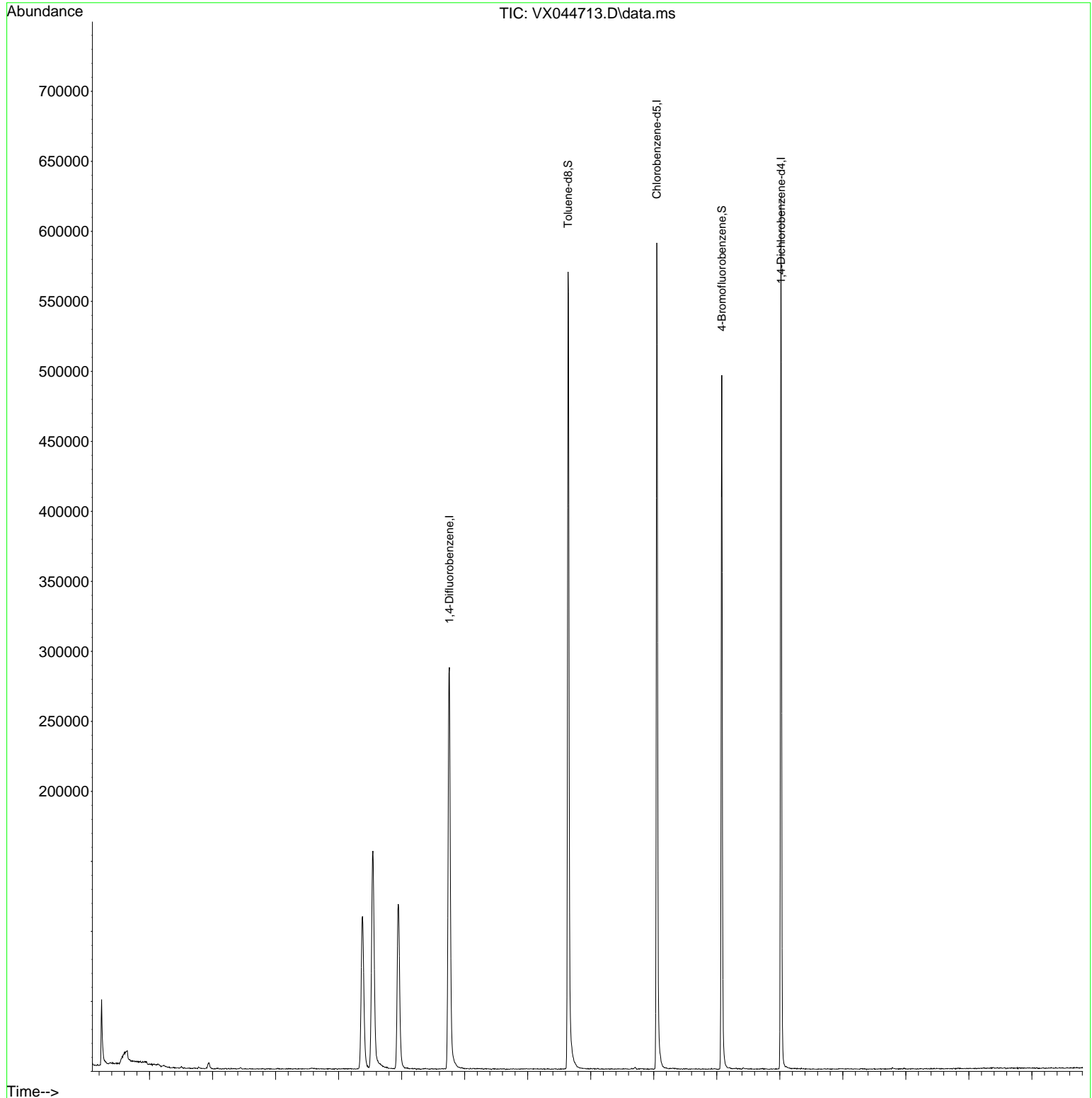
Target Compounds Qvalue

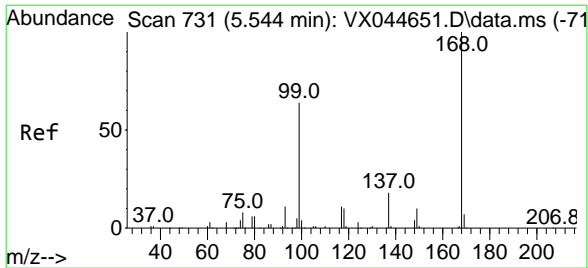
(#) = qualifier out of range (m) = manual integration (+) = signals summed

Data Path : Z:\voasrv\HPCHEM1\MSVOA_X\Data\VX012725\
Data File : VX044713.D
Acq On : 27 Jan 2025 11:01
Operator : JC/MD
Sample : VX0127WBL01
Misc : 5.0mL/MSVOA_X/WATER
ALS Vial : 4 Sample Multiplier: 1

Instrument :
MSVOA_X
ClientSampleId :
VX0127WBL01

Quant Time: Jan 28 04:08:04 2025
Quant Method : Z:\voasrv\HPCHEM1\MSVOA_X\Method\82X011525W.M
Quant Title : SW846 8260
QLast Update : Thu Jan 16 01:16:09 2025
Response via : Initial Calibration

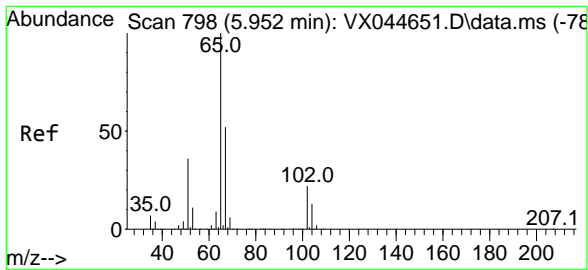
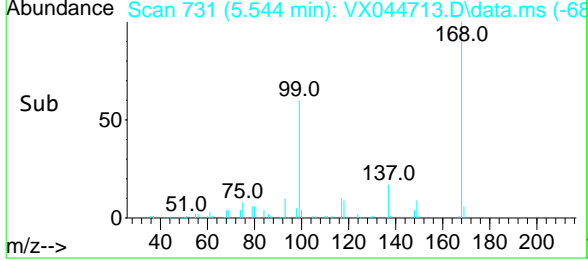
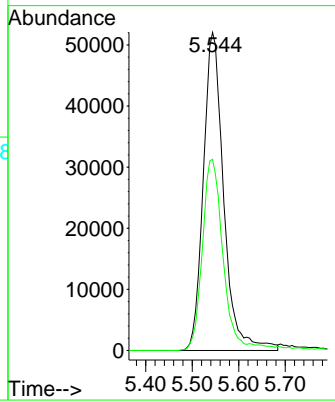
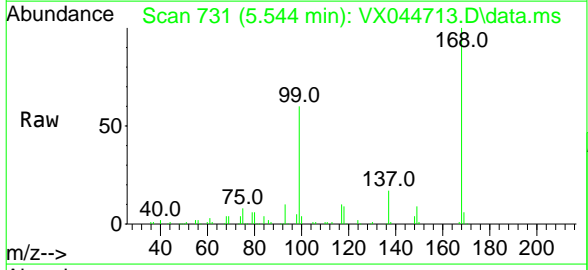




#1
 Pentafluorobenzene
 Concen: 50.000 ug/l
 RT: 5.544 min Scan# 731
 Delta R.T. -0.000 min
 Lab File: VX044713.D
 Acq: 27 Jan 2025 11:01

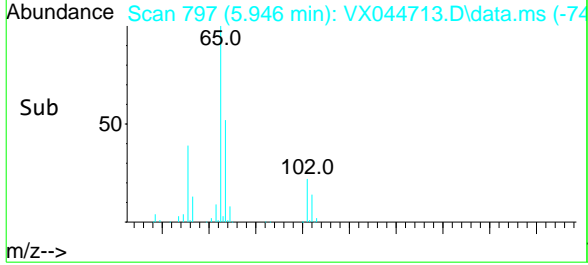
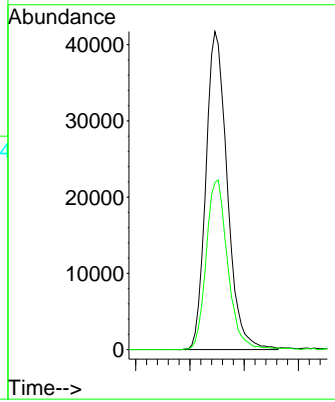
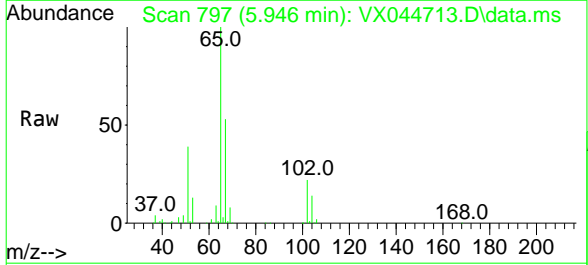
Instrument : MSVOA_X
 ClientSampleId : VX0127WBL01

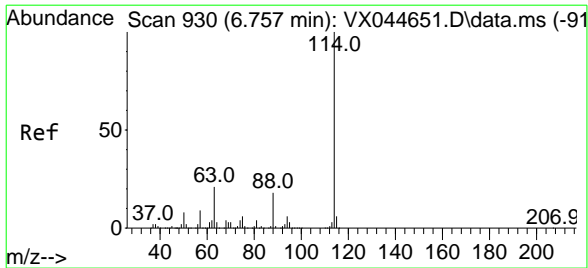
Tgt Ion: 168 Resp: 158308
 Ion Ratio Lower Upper
 168 100
 99 60.1 51.1 76.7



#33
 1,2-Dichloroethane-d4
 Concen: 47.693 ug/l
 RT: 5.946 min Scan# 797
 Delta R.T. -0.006 min
 Lab File: VX044713.D
 Acq: 27 Jan 2025 11:01

Tgt Ion: 65 Resp: 113965
 Ion Ratio Lower Upper
 65 100
 67 53.6 0.0 103.4

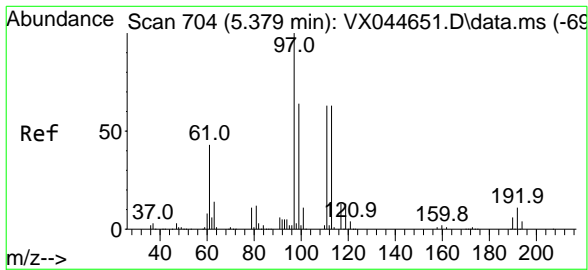
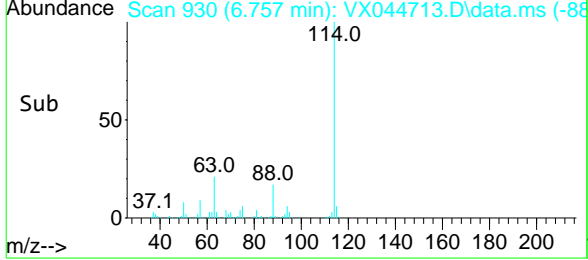
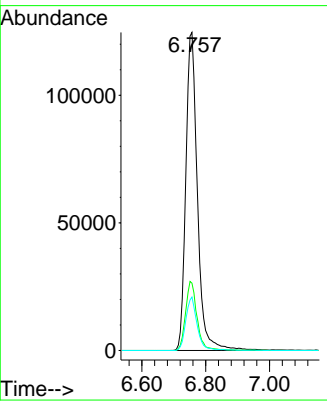
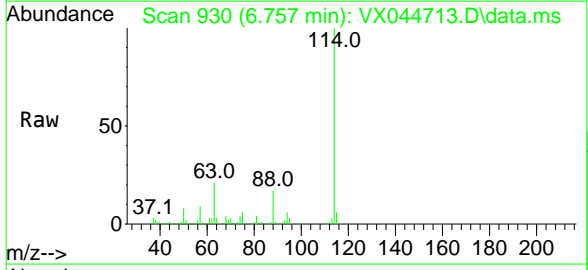




#34
 1,4-Difluorobenzene
 Concen: 50.000 ug/l
 RT: 6.757 min Scan# 93
 Delta R.T. 0.000 min
 Lab File: VX044713.D
 Acq: 27 Jan 2025 11:01

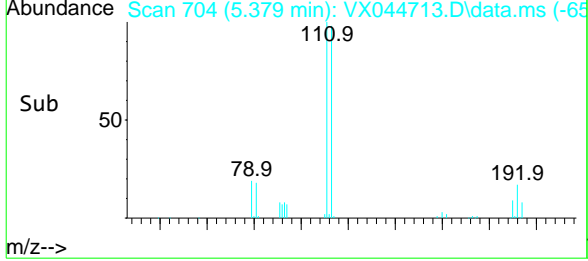
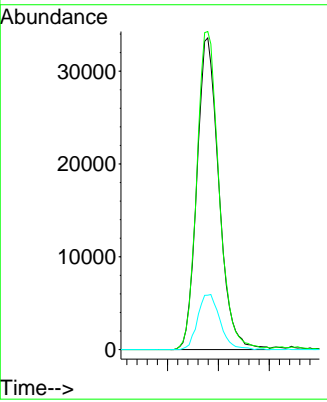
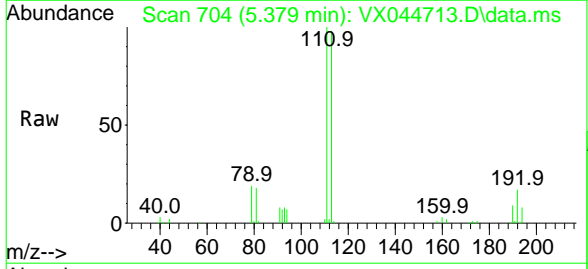
Instrument : MSVOA_X
 ClientSampleId : VX0127WBL01

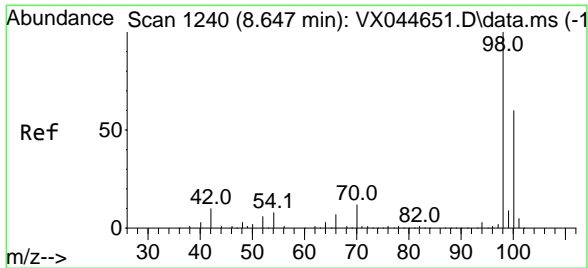
Tgt Ion	Resp	Lower	Upper
114	100		
63	21.2	0.0	43.0
88	16.8	0.0	35.4



#35
 Dibromofluoromethane
 Concen: 50.454 ug/l
 RT: 5.379 min Scan# 704
 Delta R.T. 0.000 min
 Lab File: VX044713.D
 Acq: 27 Jan 2025 11:01

Tgt Ion	Resp	Lower	Upper
113	100		
111	102.8	81.6	122.4
192	17.9	14.4	21.6





#50
 Toluene-d8
 Concen: 54.586 ug/l
 RT: 8.641 min Scan# 12
 Delta R.T. -0.006 min
 Lab File: VX044713.D
 Acq: 27 Jan 2025 11:01

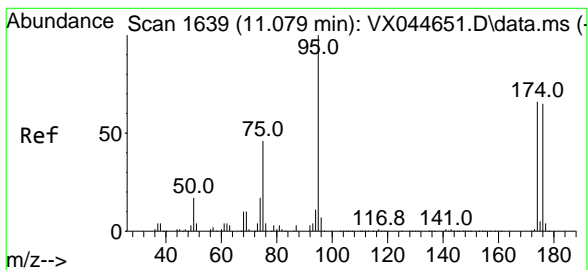
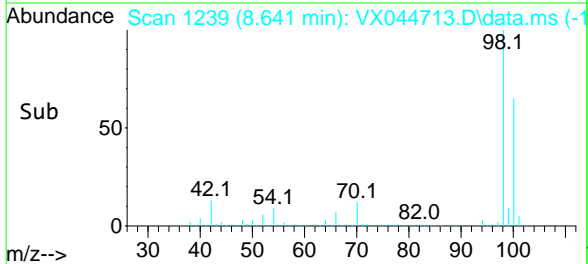
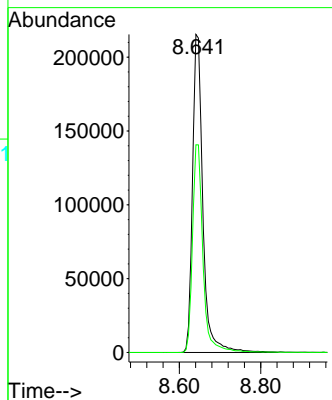
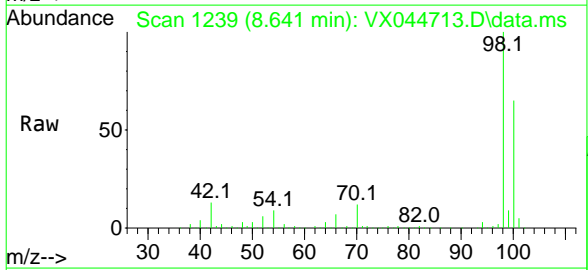
Instrument :

MSVOA_X

ClientSampleId :

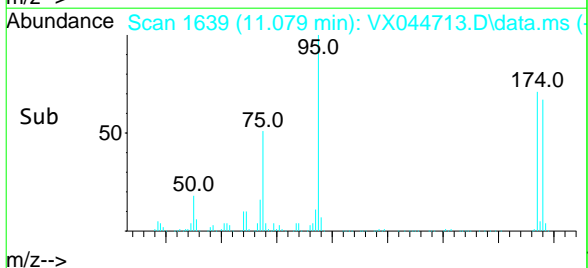
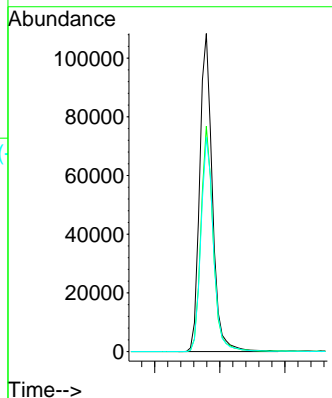
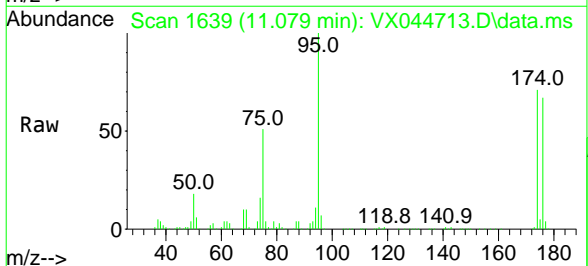
VX0127WBL01

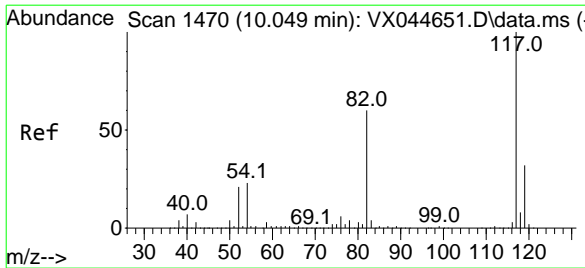
Tgt Ion: 98 Resp: 381089
 Ion Ratio Lower Upper
 98 100
 100 66.1 53.2 79.8



#62
 4-Bromofluorobenzene
 Concen: 56.135 ug/l
 RT: 11.079 min Scan# 1639
 Delta R.T. 0.000 min
 Lab File: VX044713.D
 Acq: 27 Jan 2025 11:01

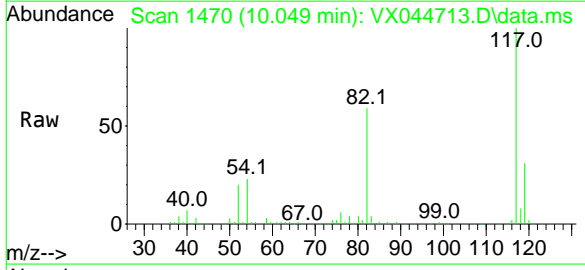
Tgt Ion: 95 Resp: 146098
 Ion Ratio Lower Upper
 95 100
 174 68.4 0.0 133.0
 176 66.7 0.0 129.4





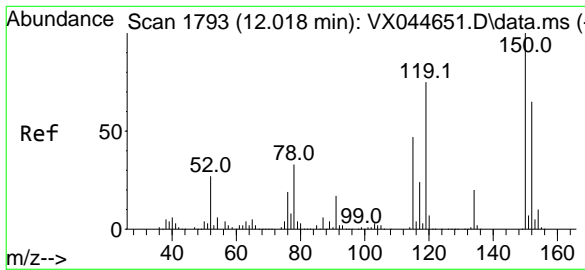
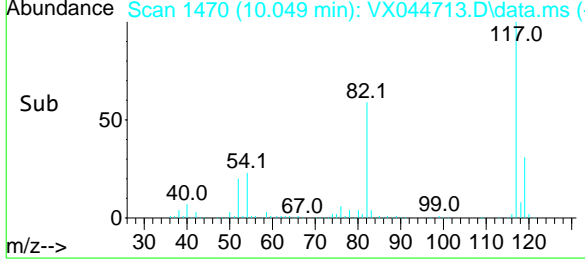
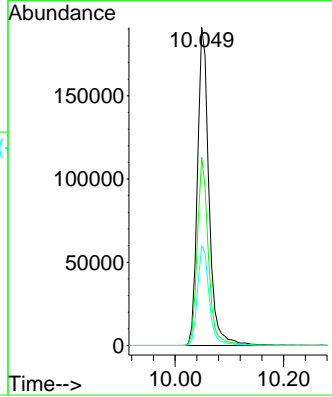
#63
 Chlorobenzene-d5
 Concen: 50.000 ug/l
 RT: 10.049 min Scan# 14
 Delta R.T. 0.000 min
 Lab File: VX044713.D
 Acq: 27 Jan 2025 11:01

Instrument :
 MSVOA_X
 ClientSampleId :
 VX0127WBL01



Tgt Ion:117 Resp: 280517

Ion	Ratio	Lower	Upper
117	100		
82	59.2	47.6	71.4
119	31.3	25.4	38.2



#72
 1,4-Dichlorobenzene-d4
 Concen: 50.000 ug/l
 RT: 12.018 min Scan# 1793
 Delta R.T. 0.000 min
 Lab File: VX044713.D
 Acq: 27 Jan 2025 11:01

Tgt Ion:152 Resp: 124517

Ion	Ratio	Lower	Upper
152	100		
115	62.2	43.8	131.4
150	157.7	0.0	347.8

