

Data Path : Z:\voasrv\HPCHEM1\MSVOA\_X\Data\VX012725\  
 Data File : VX044713.D  
 Acq On : 27 Jan 2025 11:01  
 Operator : JC/MD  
 Sample : VX0127WBL01  
 Misc : 5.0mL/MSVOA\_X/WATER  
 ALS Vial : 4 Sample Multiplier: 1

Instrument :  
 MSVOA\_X  
 ClientSampleId :  
 VX0127WBL01

Integration Parameters: RTEINT.P  
 Integrator: RTE  
 Smoothing : ON Filtering: 5  
 Sampling : 1 Min Area: 3 % of largest Peak  
 Start Thrs: 0.2 Max Peaks: 100  
 Stop Thrs : 0 Peak Location: TOP

If leading or trailing edge < 100 prefer < Baseline drop else tangent >  
 Peak separation: 5

Method : Z:\voasrv\HPCHEM1\MSVOA\_X\Method\82X011525W.M  
 Title : SW846 8260

Signal : TIC: VX044713.D\data.ms

peak #	R.T. min	first scan	max scan	last scan	PK TY	peak height	corr. area	corr. % max.	% of total
1	1.240	22	25	35	rBV	46789	65332	6.49%	1.247%
2	1.569	71	79	80	rBV4	5614	10912	1.08%	0.208%
3	5.379	692	704	719	rBV2	108960	328275	32.62%	6.265%
4	5.544	721	731	754	rBV	154632	471641	46.86%	9.001%
5	5.946	787	797	814	rBV	117635	327686	32.56%	6.254%
6	6.757	920	930	953	rBV	286911	727355	72.27%	13.881%
7	8.641	1233	1239	1263	rBV	569144	1006425	100.00%	19.207%
8	10.049	1464	1470	1490	rBV	589968	864057	85.85%	16.490%
9	11.079	1633	1639	1654	rBV	495549	662534	65.83%	12.644%
10	12.018	1788	1793	1804	rBV	623012	775799	77.08%	14.805%

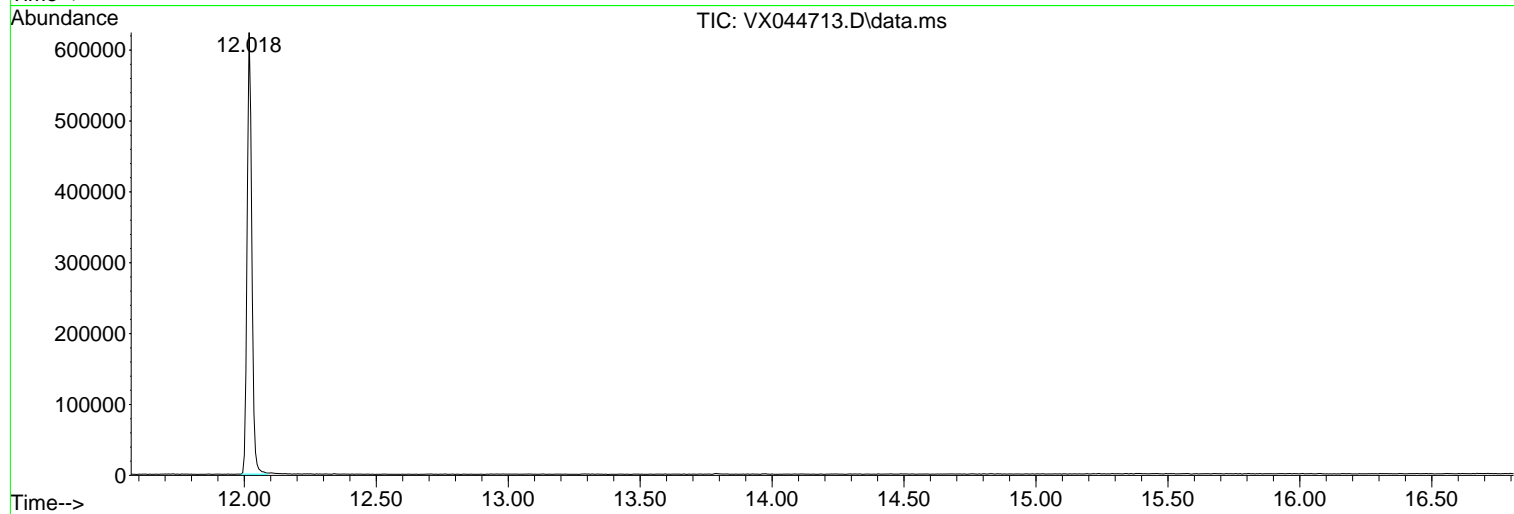
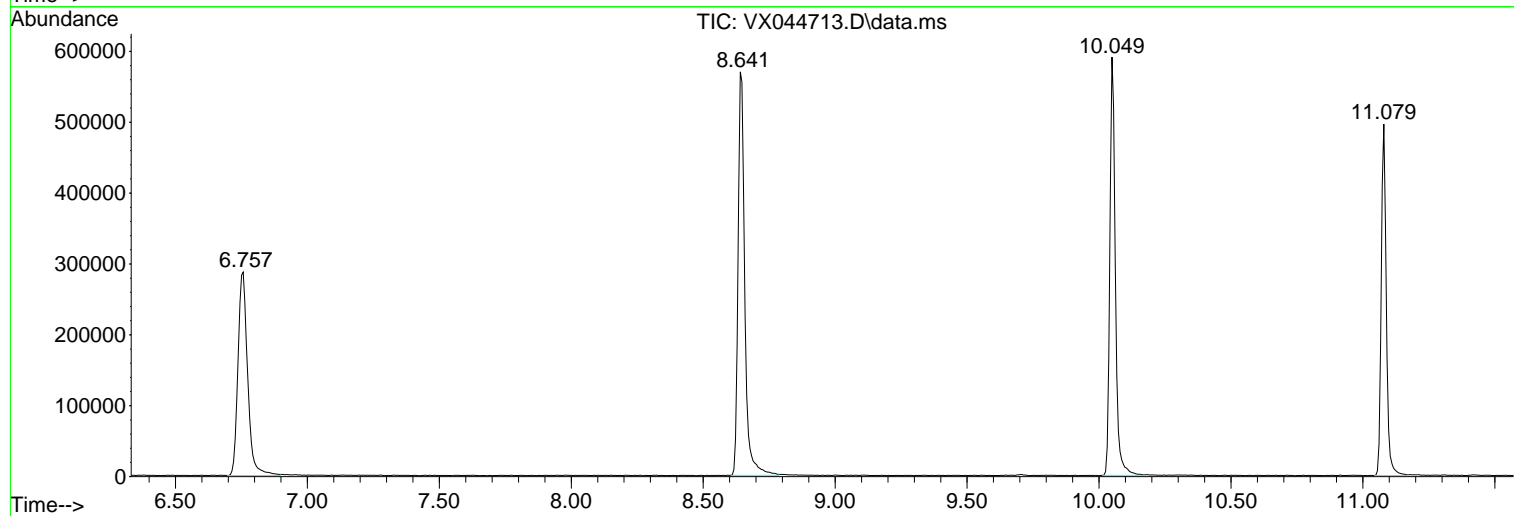
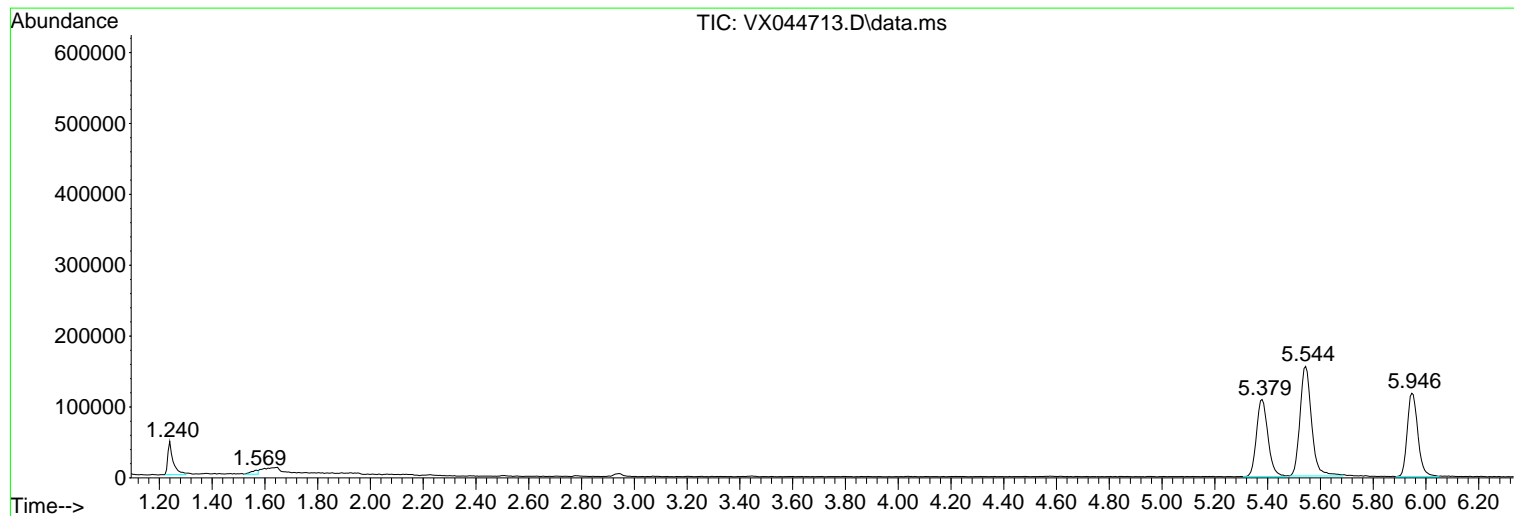
Sum of corrected areas: 5240016

Data Path : Z:\voasrv\HPCHEM1\MSVOA\_X\Data\VX012725\  
Data File : VX044713.D  
Acq On : 27 Jan 2025 11:01  
Operator : JC/MD  
Sample : VX0127WBL01  
Misc : 5.0mL/MSVOA\_X/WATER  
ALS Vial : 4 Sample Multiplier: 1

Instrument :  
MSVOA\_X  
ClientSampleId :  
VX0127WBL01

Quant Method : Z:\voasrv\HPCHEM1\MSVOA\_X\Method\82X011525W.M  
Quant Title : SW846 8260

TIC Library : C:\Database\NIST20.L  
TIC Integration Parameters: LSCINT.P



Data Path : Z:\voasrv\HPCHEM1\MSVOA\_X\Data\VX012725\  
Data File : VX044713.D  
Acq On : 27 Jan 2025 11:01  
Operator : JC/MD  
Sample : VX0127WBL01  
Misc : 5.0mL/MSVOA\_X/WATER  
ALS Vial : 4 Sample Multiplier: 1

Instrument :  
MSVOA\_X  
ClientSampleId :  
VX0127WBL01

Quant Method : Z:\voasrv\HPCHEM1\MSVOA\_X\Method\82X011525W.M  
Quant Title : SW846 8260

TIC Library : C:\Database\NIST0.L  
TIC Integration Parameters: LSCINT.P

No Library Search Compounds Detected

\*\*\*\*\*

Data Path : Z:\voasrv\HPCHEM1\MSVOA\_X\Data\VX012725\  
Data File : VX044713.D  
Acq On : 27 Jan 2025 11:01  
Operator : JC/MD  
Sample : VX0127WBL01  
Misc : 5.0mL/MSVOA\_X/WATER  
ALS Vial : 4 Sample Multiplier: 1

Instrument :  
MSVOA\_X  
ClientSampleId :  
VX0127WBL01

Quant Method : Z:\voasrv\HPCHEM1\MSVOA\_X\Method\82X011525W.M  
Quant Title : SW846 8260

TIC Library : C:\Database\NIST0.L  
TIC Integration Parameters: LSCINT.P

TIC Top Hit name	RT	EstConc	Units	Response	--Internal Standard--			
					#	RT	Resp	Conc

---