

Data Path : Z:\svoasrv\HPCHEM1\BNA_G\Data\BG020325\
 Data File : BG063979.D
 Acq On : 3 Feb 2025 13:49
 Operator : RC/JU
 Sample : SSTDICCC040
 Misc :
 ALS Vial : 6 Sample Multiplier: 1

Instrument :
 BNA_G
 ClientSampleId :
 SSTDICCC040

Quant Time: Feb 04 02:46:26 2025
 Quant Method : Z:\svoasrv\HPCHEM1\BNA_G\Methods\8270-BG020325.M
 Quant Title : ASP BNA STANDARDS FOR 5 POINT CALIBRATION
 QLast Update : Tue Feb 04 02:44:47 2025
 Response via : Initial Calibration

Compound	R.T.	QIon	Response	Conc	Units	Dev(Min)	

Internal Standards							
1) 1,4-Dichlorobenzene-d4	7.876	152	58215	20.000	ng	0.00	
21) Naphthalene-d8	10.661	136	254634	20.000	ng	0.00	
39) Acenaphthene-d10	14.498	164	171313	20.000	ng	0.00	
64) Phenanthrene-d10	17.236	188	370673	20.000	ng	0.00	
76) Chrysene-d12	21.472	240	406429	20.000	ng	0.00	
86) Perylene-d12	24.498	264	431314	20.000	ng	0.00	
System Monitoring Compounds							
5) 2-Fluorophenol	5.461	112	310604	85.544	ng	0.00	
7) Phenol-d6	7.036	99	416114	83.510	ng	0.00	
23) Nitrobenzene-d5	9.028	82	342204	81.676	ng	0.00	
42) 2,4,6-Tribromophenol	15.984	330	130268	73.373	ng	0.00	
45) 2-Fluorobiphenyl	13.123	172	898918	80.395	ng	0.00	
79) Terphenyl-d14	19.862	244	1546856	79.486	ng	0.00	
Target Compounds							
							Qvalue
2) 1,4-Dioxane	3.393	88	69861	40.514	ng		100
3) Pyridine	3.781	79	194752	41.808	ng		100
4) n-Nitrosodimethylamine	3.699	42	108034	40.350	ng		100
6) Aniline	7.206	93	220230	41.244	ng		100
8) 2-Chlorophenol	7.441	128	157587	42.593	ng		100
9) Benzaldehyde	7.018	77	111112	40.848	ng		100
10) Phenol	7.065	94	216089	41.198	ng		100
11) bis(2-Chloroethyl)ether	7.300	93	172018	40.728	ng		100
12) 1,3-Dichlorobenzene	7.765	146	179229	40.710	ng		100
13) 1,4-Dichlorobenzene	7.912	146	180921	40.690	ng		100
14) 1,2-Dichlorobenzene	8.229	146	172378	40.449	ng		100
15) Benzyl Alcohol	8.111	79	154672	41.530	ng		100
16) 2,2'-oxybis(1-Chloropr...	8.411	45	343411	40.378	ng		100
17) 2-Methylphenol	8.311	107	142808	42.098	ng		100
18) Hexachloroethane	8.957	117	62553	42.748	ng		100
19) n-Nitroso-di-n-propyla...	8.681	70	144686	41.931	ng		100
20) 3+4-Methylphenols	8.634	107	190536	42.160	ng		100
22) Acetophenone	8.693	105	280690	40.120	ng		100
24) Nitrobenzene	9.069	77	180345	38.095	ng		100
25) Isophorone	9.592	82	364239	40.103	ng		100
26) 2-Nitrophenol	9.780	139	38570	39.559	ng		100
27) 2,4-Dimethylphenol	9.839	122	109948	42.083	ng		100
28) bis(2-Chloroethoxy)met...	10.080	93	232223	40.182	ng		100
29) 2,4-Dichlorophenol	10.309	162	137391	38.427	ng		100
30) 1,2,4-Trichlorobenzene	10.526	180	172841	40.268	ng		100
31) Naphthalene	10.714	128	550914	40.354	ng		100
32) Benzoic acid	9.968	122	57583m	37.919	ng		
33) 4-Chloroaniline	10.814	127	213817	40.878	ng		100
34) Hexachlorobutadiene	11.008	225	109810	40.173	ng		100
35) Caprolactam	11.578	113	49255	38.096	ng		100
36) 4-Chloro-3-methylphenol	11.936	107	178005	42.565	ng		100
37) 2-Methylnaphthalene	12.324	142	382546	40.211	ng		100
38) 1-Methylnaphthalene	12.541	142	371846	39.502	ng		100
40) 1,2,4,5-Tetrachloroben...	12.688	216	201175	39.822	ng		100
41) Hexachlorocyclopentadiene	12.677	237	55630	40.817	ng		100
43) 2,4,6-Trichlorophenol	12.929	196	109593	38.035	ng		100

Data Path : Z:\svoasrv\HPCHEM1\BNA_G\Data\BG020325\
 Data File : BG063979.D
 Acq On : 3 Feb 2025 13:49
 Operator : RC/JU
 Sample : SSTDICCC040
 Misc :
 ALS Vial : 6 Sample Multiplier: 1

Instrument :
 BNA_G
 ClientSampleId :
 SSTDICCC040

Quant Time: Feb 04 02:46:26 2025
 Quant Method : Z:\svoasrv\HPCHEM1\BNA_G\Methods\8270-BG020325.M
 Quant Title : ASP BNA STANDARDS FOR 5 POINT CALIBRATION
 QLast Update : Tue Feb 04 02:44:47 2025
 Response via : Initial Calibration

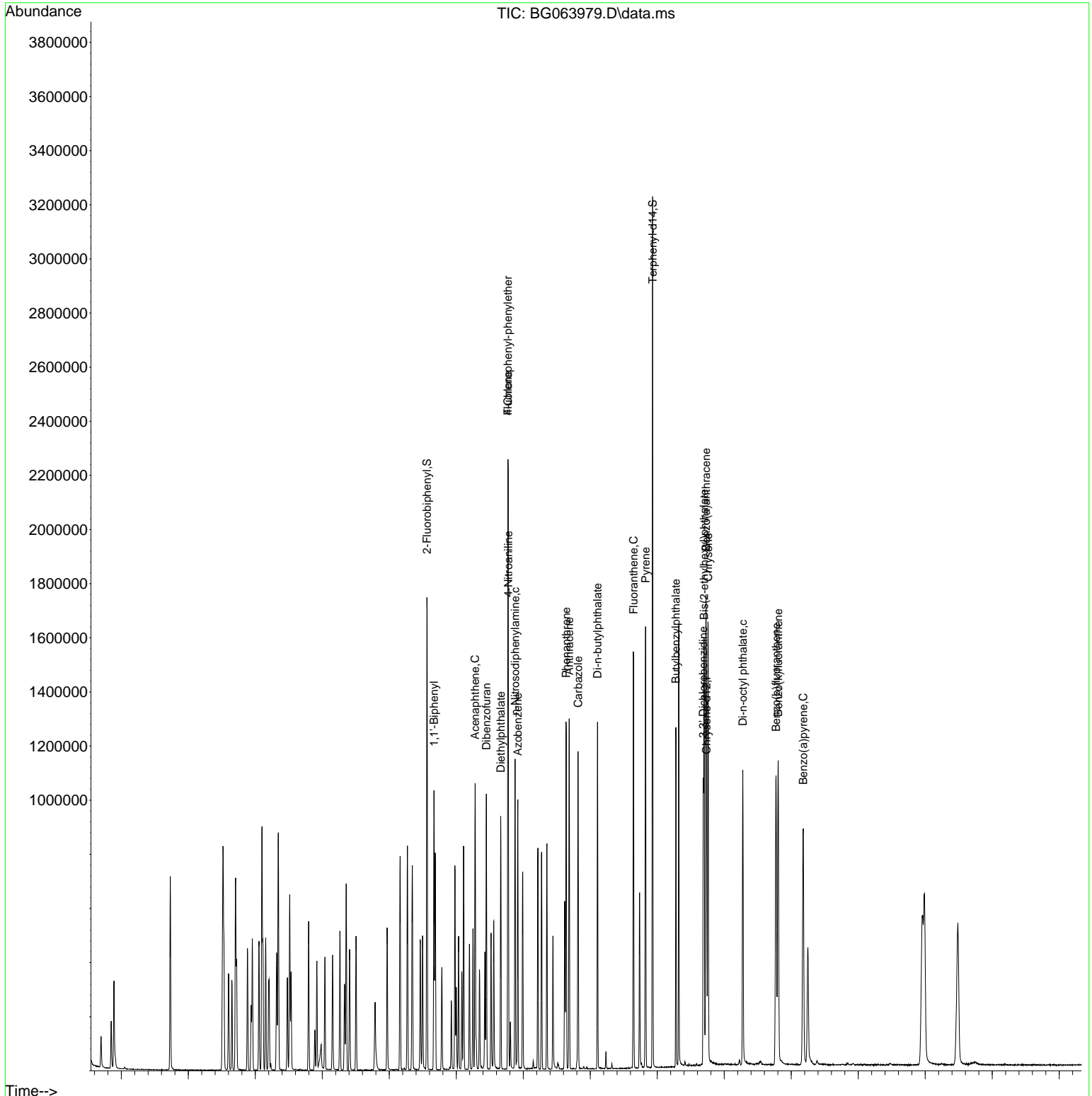
Compound	R.T.	QIon	Response	Conc	Units	Dev(Min)
44) 2,4,5-Trichlorophenol	12.994	196	127838	39.072	ng	100
46) 1,1'-Biphenyl	13.335	154	522991	40.097	ng	100
47) 2-Chloronaphthalene	13.370	162	378606	39.825	ng	100
48) 2-Nitroaniline	13.570	65	91764	38.321	ng	100
49) Acenaphthylene	14.222	152	593049	40.161	ng	100
50) Dimethylphthalate	13.957	163	472774	41.622	ng	100
51) 2,6-Dinitrotoluene	14.069	165	78903	38.638	ng	100
52) Acenaphthene	14.563	154	392940	39.670	ng	100
53) 3-Nitroaniline	14.392	138	91397	37.599	ng	100
54) 2,4-Dinitrophenol	14.592	184	17325	37.854	ng	100
55) Dibenzofuran	14.897	168	639708	39.775	ng	100
56) 4-Nitrophenol	14.692	139	68812	36.454	ng	100
57) 2,4-Dinitrotoluene	14.856	165	100291	38.133	ng	100
58) Fluorene	15.544	166	492419	39.612	ng	100
59) 2,3,4,6-Tetrachlorophenol	15.121	232	115130	37.040	ng	100
60) Diethylphthalate	15.326	149	506557	42.063	ng	100
61) 4-Chlorophenyl-phenyle...	15.544	204	242572	38.891	ng	100
62) 4-Nitroaniline	15.556	138	99097	37.793	ng	100
63) Azobenzene	15.838	77	560634	39.414	ng	100
65) 4,6-Dinitro-2-methylph...	15.614	198	31222	39.130	ng	100
66) n-Nitrosodiphenylamine	15.755	169	420890	40.953	ng	100
67) 4-Bromophenyl-phenylether	16.437	248	151128	40.962	ng	100
68) Hexachlorobenzene	16.548	284	177766	40.982	ng	100
69) Atrazine	16.707	200	146392	42.803	ng	100
70) Pentachlorophenol	16.889	266	90008	37.000	ng	100
71) Phenanthrene	17.277	178	785058	40.325	ng	100
72) Anthracene	17.371	178	790085	40.557	ng	100
73) Carbazole	17.635	167	733964	40.247	ng	100
74) Di-n-butylphthalate	18.217	149	840439	44.212	ng	100
75) Fluoranthene	19.292	202	958478	40.430	ng	100
77) Benzidine	19.474	184	383004	44.254	ng	100
78) Pyrene	19.651	202	1002470	39.954	ng	100
80) Butylbenzylphthalate	20.556	149	315091	37.357	ng	100
81) Benzo(a)anthracene	21.454	228	1040731	40.331	ng	100
82) 3,3'-Dichlorobenzidine	21.372	252	352733	43.893	ng	100
83) Chrysene	21.519	228	1014525	39.507	ng	100
84) Bis(2-ethylhexyl)phtha...	21.402	149	528301	38.571	ng	100
85) Di-n-octyl phthalate	22.553	149	829893	37.813	ng	100
87) Indeno(1,2,3-cd)pyrene	27.912	276	1127623	40.525	ng	100
88) Benzo(b)fluoranthene	23.546	252	1036813	40.823	ng	100
89) Benzo(k)fluoranthene	23.611	252	1069986	41.029	ng	100
90) Benzo(a)pyrene	24.357	252	918885	40.533	ng	100
91) Dibenzo(a,h)anthracene	27.976	278	956574	40.713	ng	100
92) Benzo(g,h,i)perylene	28.975	276	957984	40.388	ng	100

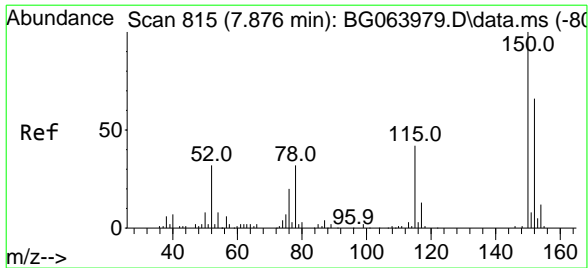
(#) = qualifier out of range (m) = manual integration (+) = signals summed

Data Path : Z:\svoasrv\HPCHEM1\BNA_G\Data\BG020325\
 Data File : BG063979.D
 Acq On : 3 Feb 2025 13:49
 Operator : RC/JU
 Sample : SSTDICCC040
 Misc :
 ALS Vial : 6 Sample Multiplier: 1

Instrument :
 BNA_G
 ClientSampleId :
 SSTDICCC040

Quant Time: Feb 04 02:46:26 2025
 Quant Method : Z:\svoasrv\HPCHEM1\BNA_G\Methods\8270-BG020325.M
 Quant Title : ASP BNA STANDARDS FOR 5 POINT CALIBRATION
 QLast Update : Tue Feb 04 02:44:47 2025
 Response via : Initial Calibration

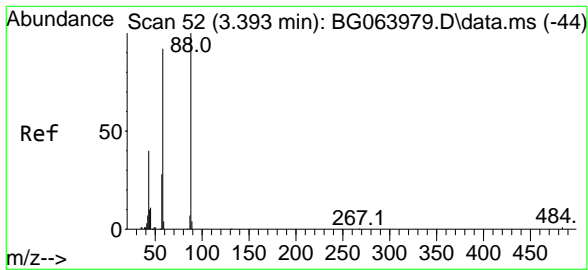
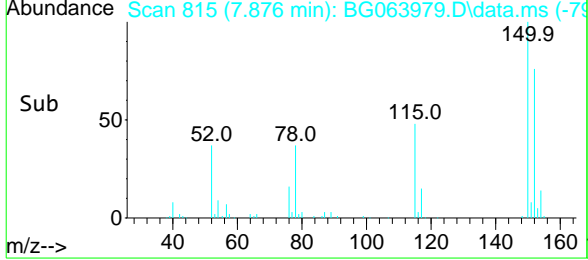
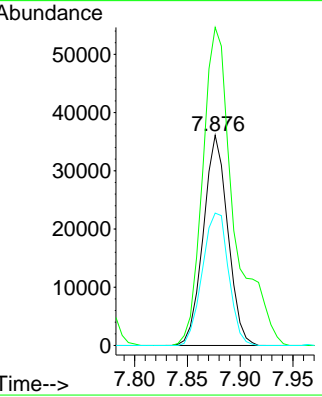
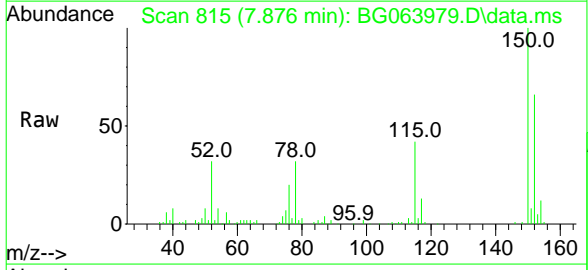




#1
 1,4-Dichlorobenzene-d4
 Concen: 20.000 ng
 RT: 7.876 min Scan# 81
 Delta R.T. 0.000 min
 Lab File: BG063979.D
 Acq: 3 Feb 2025 13:49

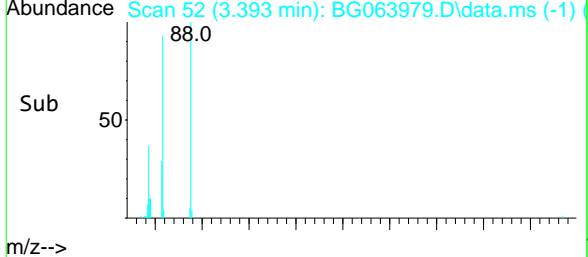
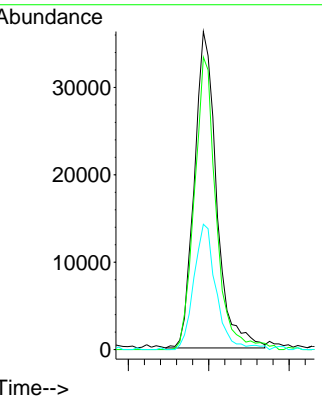
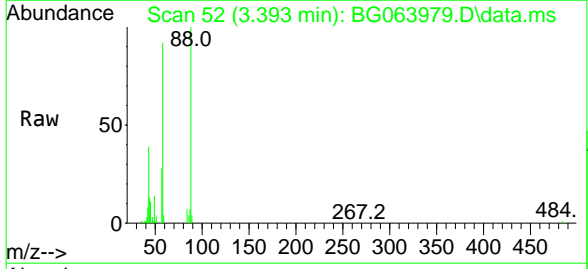
Instrument : BNA_G
 ClientSampleId : SSTDICCC040

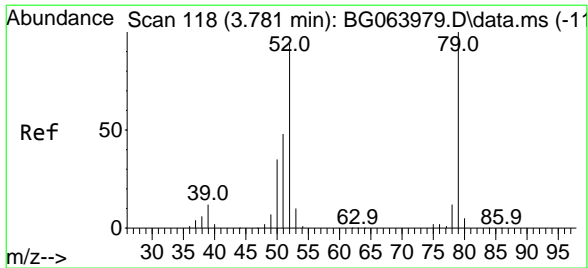
Tgt Ion	Resp	Lower	Upper
152	100		
150	151.3	121.0	181.6
115	63.0	50.4	75.6



#2
 1,4-Dioxane
 Concen: 40.514 ng
 RT: 3.393 min Scan# 52
 Delta R.T. 0.000 min
 Lab File: BG063979.D
 Acq: 3 Feb 2025 13:49

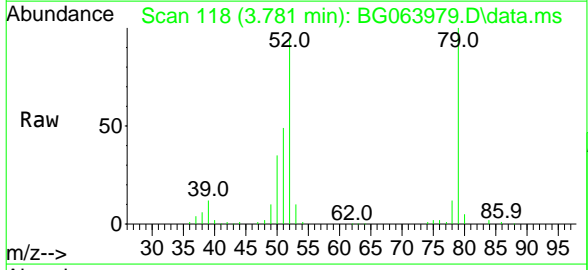
Tgt Ion	Resp	Lower	Upper
88	100		
58	89.8	71.8	107.8
43	39.0	31.2	46.8



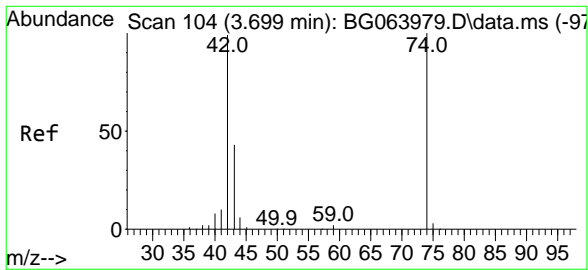
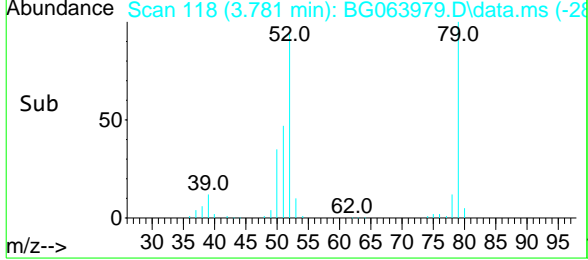
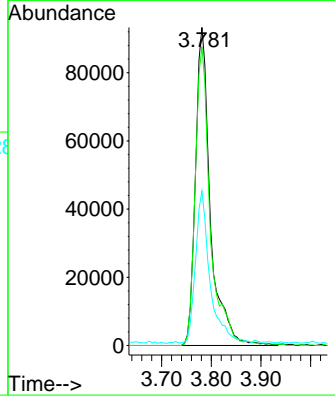


#3
 Pyridine
 Concen: 41.808 ng
 RT: 3.781 min Scan# 118
 Delta R.T. 0.000 min
 Lab File: BG063979.D
 Acq: 3 Feb 2025 13:49

Instrument : BNA_G
 ClientSampleId : SSTDICCC040

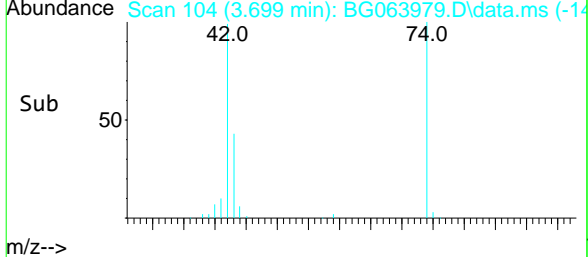
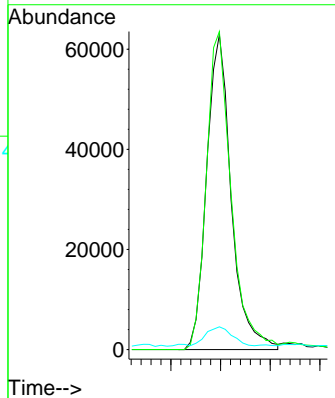
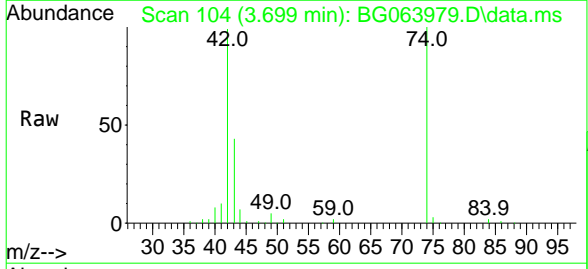


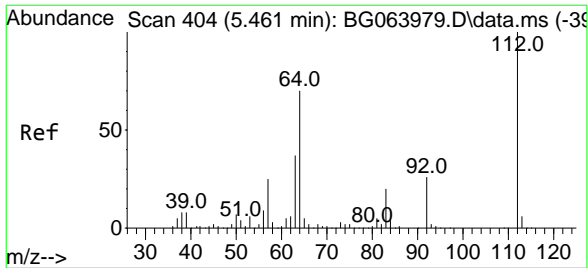
Tgt Ion	Resp	Lower	Upper
79	194752		
52	93.9	75.1	112.7
51	48.6	38.9	58.3



#4
 n-Nitrosodimethylamine
 Concen: 40.350 ng
 RT: 3.699 min Scan# 104
 Delta R.T. 0.000 min
 Lab File: BG063979.D
 Acq: 3 Feb 2025 13:49

Tgt Ion	Resp	Lower	Upper
42	108034		
74	101.0	80.8	121.2
44	7.2	5.8	8.6

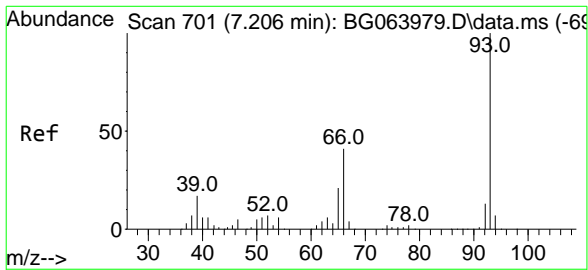
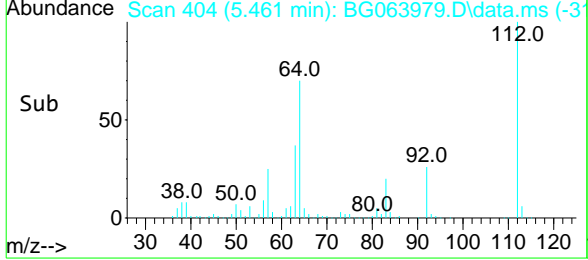
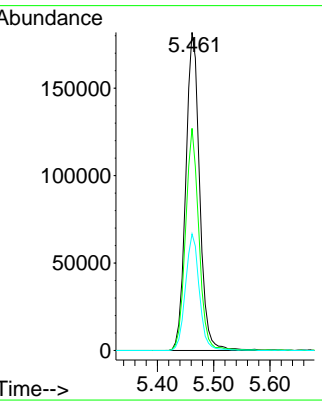
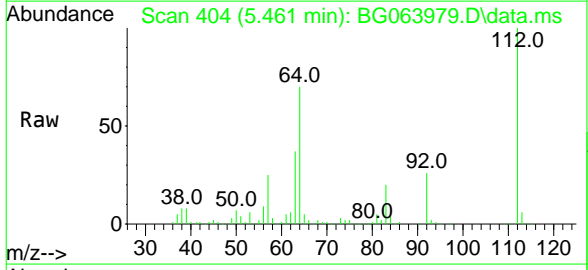




#5
 2-Fluorophenol
 Concen: 85.544 ng
 RT: 5.461 min Scan# 404
 Delta R.T. 0.000 min
 Lab File: BG063979.D
 Acq: 3 Feb 2025 13:49

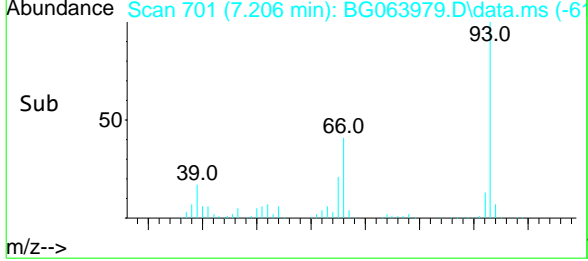
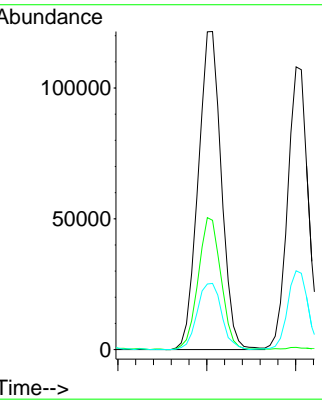
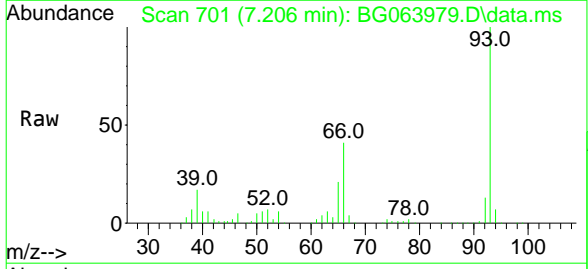
Instrument : BNA_G
 ClientSampleId : SSTDICCC040

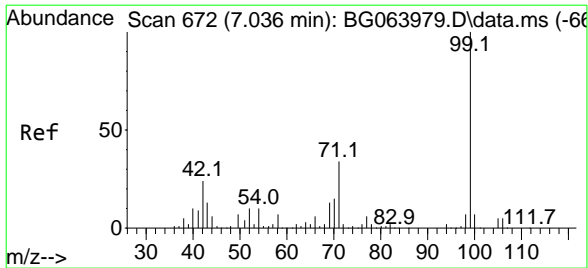
Tgt Ion	Resp	Lower	Upper
112	100		
64	69.8	55.8	83.8
63	36.6	29.3	43.9



#6
 Aniline
 Concen: 41.244 ng
 RT: 7.206 min Scan# 701
 Delta R.T. 0.000 min
 Lab File: BG063979.D
 Acq: 3 Feb 2025 13:49

Tgt Ion	Resp	Lower	Upper
93	100		
66	40.6	32.5	48.7
65	20.8	16.6	25.0

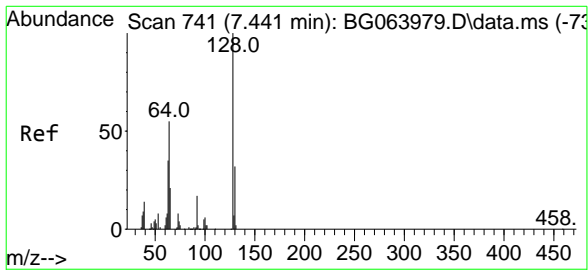
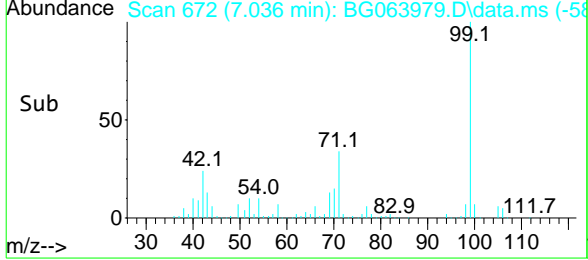
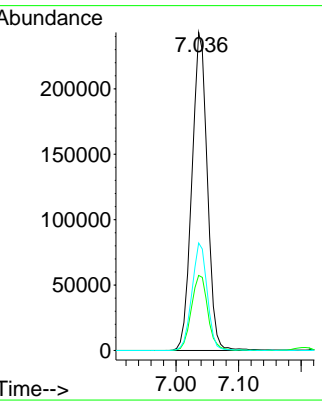
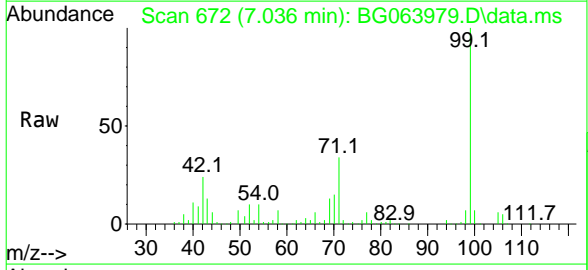




#7
 Phenol-d6
 Concen: 83.510 ng
 RT: 7.036 min Scan# 672
 Delta R.T. 0.000 min
 Lab File: BG063979.D
 Acq: 3 Feb 2025 13:49

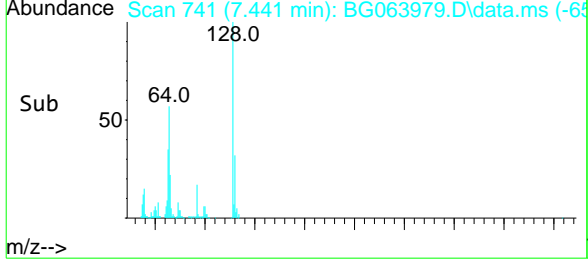
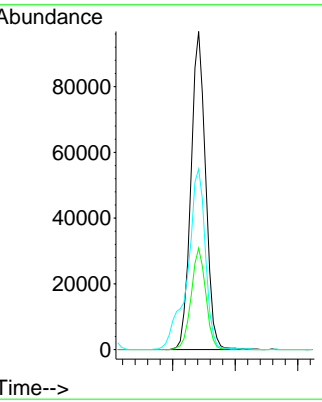
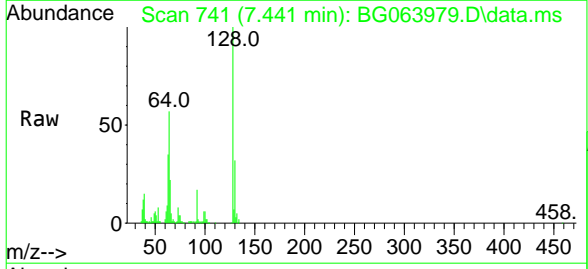
Instrument : BNA_G
 ClientSampleId : SSTDICCC040

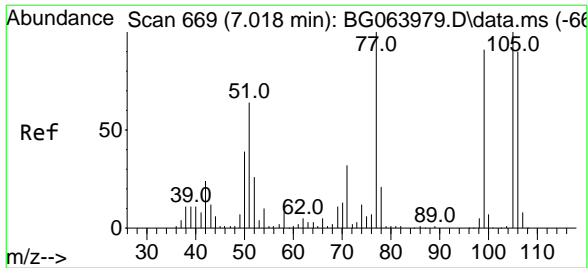
Tgt Ion	Resp	Lower	Upper
99	416114		
42	23.6	18.9	28.3
71	33.8	27.0	40.6



#8
 2-Chlorophenol
 Concen: 42.593 ng
 RT: 7.441 min Scan# 741
 Delta R.T. 0.000 min
 Lab File: BG063979.D
 Acq: 3 Feb 2025 13:49

Tgt Ion	Resp	Lower	Upper
128	157587		
130	31.9	11.9	51.9
64	56.8	36.8	76.8

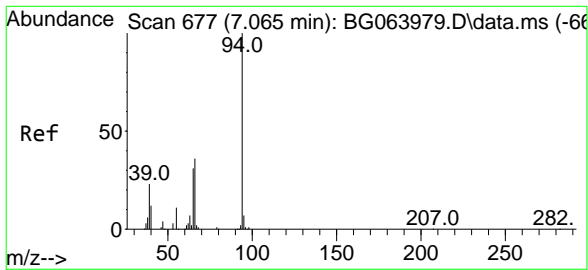
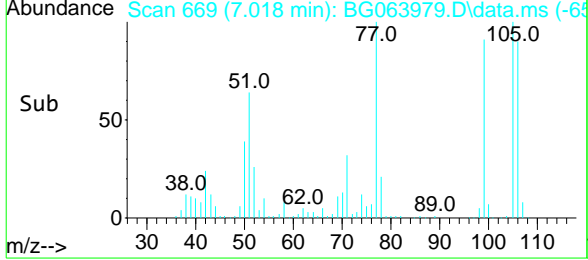
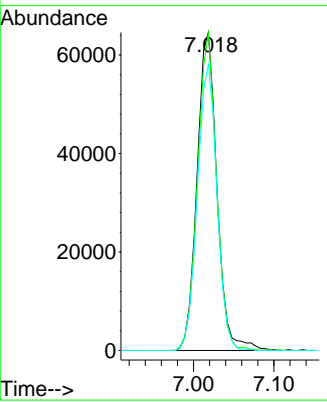
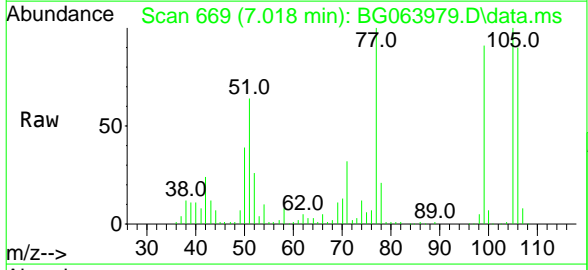




#9
 Benzaldehyde
 Concen: 40.848 ng
 RT: 7.018 min Scan# 669
 Delta R.T. 0.000 min
 Lab File: BG063979.D
 Acq: 3 Feb 2025 13:49

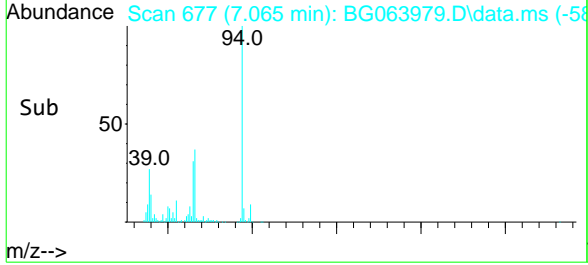
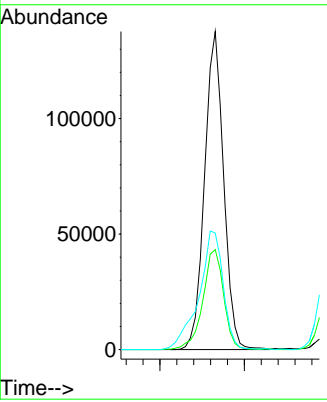
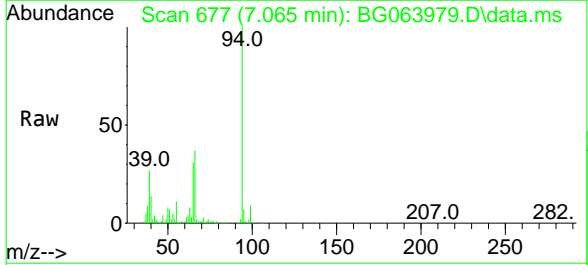
Instrument : BNA_G
 ClientSampleId : SSTDICCC040

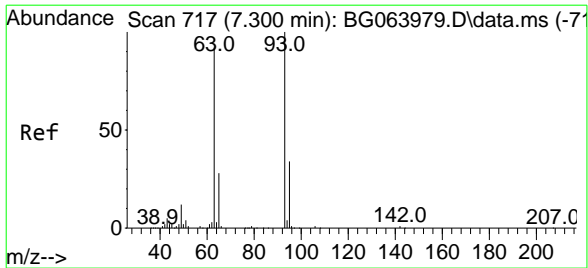
Tgt Ion	Resp	Lower	Upper
77	11112		
105	99.8	79.8	119.8
106	89.9	69.9	109.9



#10
 Phenol
 Concen: 41.198 ng
 RT: 7.065 min Scan# 677
 Delta R.T. 0.000 min
 Lab File: BG063979.D
 Acq: 3 Feb 2025 13:49

Tgt Ion	Resp	Lower	Upper
94	216089		
65	31.4	11.4	51.4
66	36.7	16.7	56.7

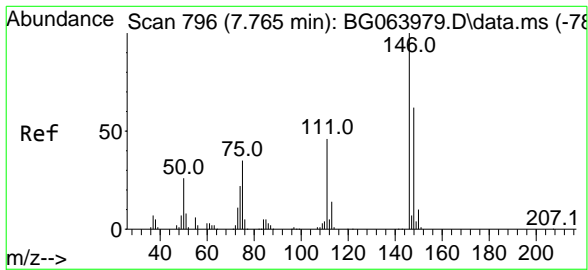
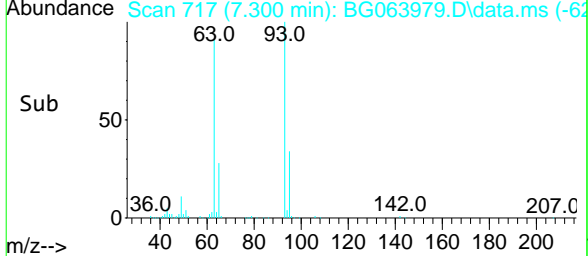
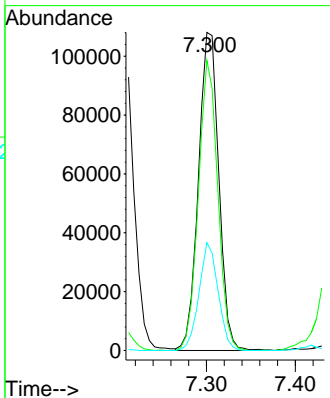
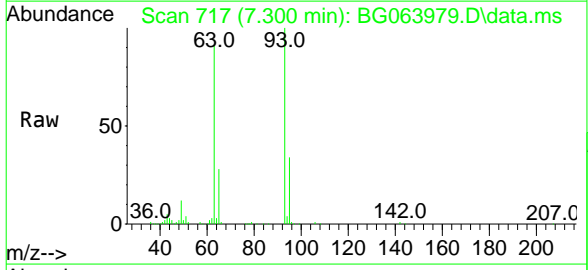




#11
 bis(2-Chloroethyl)ether
 Concen: 40.728 ng
 RT: 7.300 min Scan# 717
 Delta R.T. 0.000 min
 Lab File: BG063979.D
 Acq: 3 Feb 2025 13:49

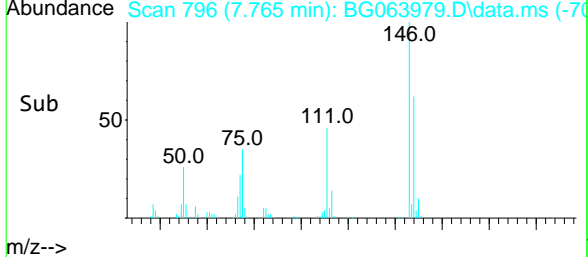
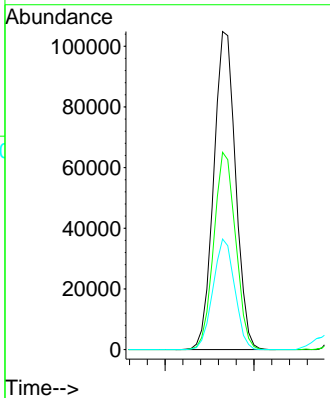
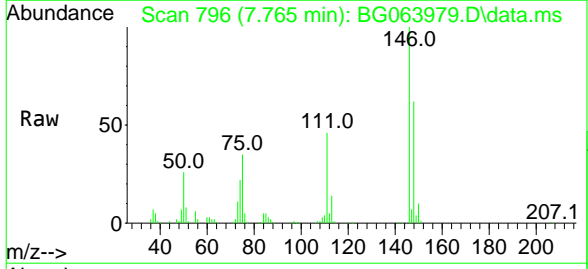
Instrument : BNA_G
 ClientSampleId : SSTDICCC040

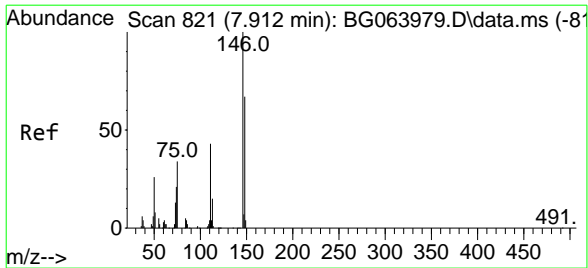
Tgt Ion	Resp	Lower	Upper
93	172018		
63	91.2	71.2	111.2
95	33.9	13.9	53.9



#12
 1,3-Dichlorobenzene
 Concen: 40.710 ng
 RT: 7.765 min Scan# 796
 Delta R.T. 0.000 min
 Lab File: BG063979.D
 Acq: 3 Feb 2025 13:49

Tgt Ion	Resp	Lower	Upper
146	179229		
148	62.0	49.6	74.4
75	34.8	27.8	41.8

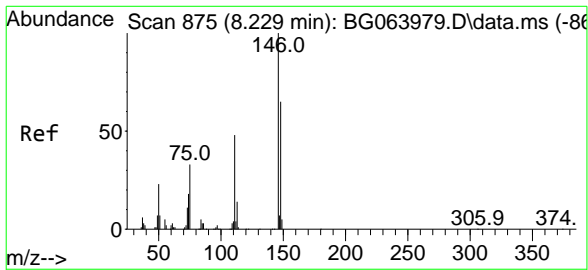
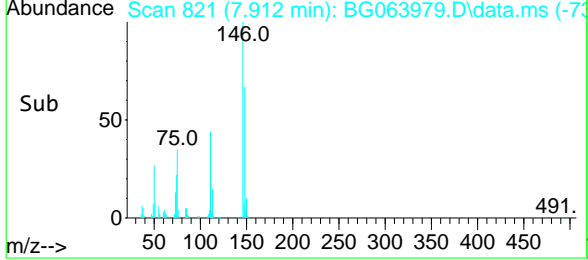
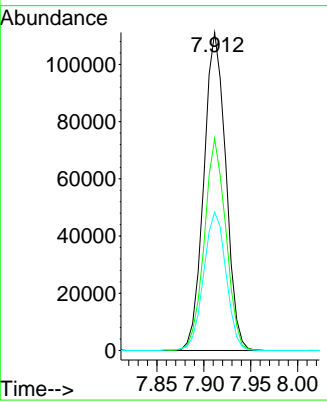
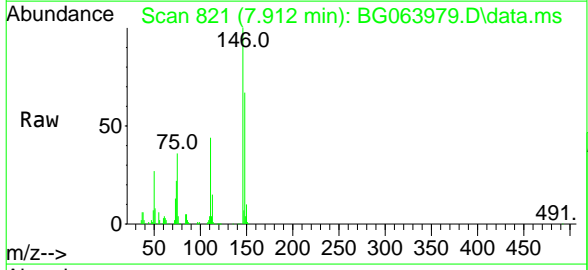




#13
 1,4-Dichlorobenzene
 Concen: 40.690 ng
 RT: 7.912 min Scan# 821
 Delta R.T. 0.000 min
 Lab File: BG063979.D
 Acq: 3 Feb 2025 13:49

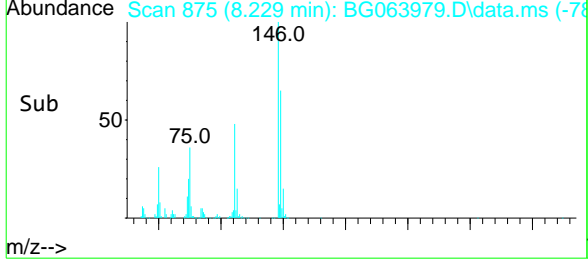
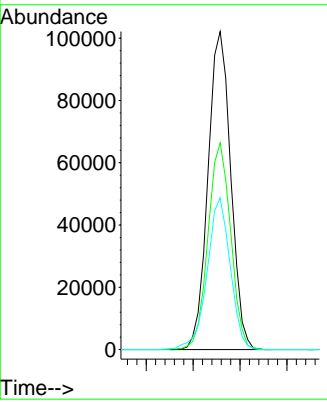
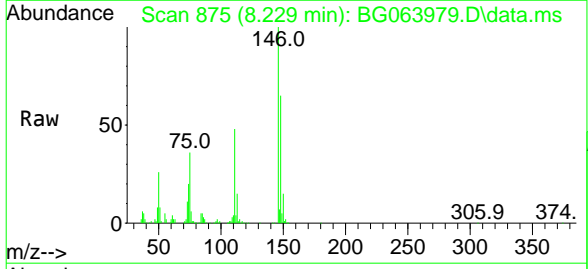
Instrument : BNA_G
 ClientSampleId : SSTDICCC040

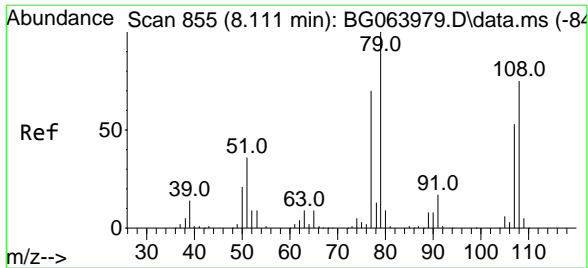
Tgt Ion	Ratio	Lower	Upper
146	100		
148	66.6	53.3	79.9
111	43.5	34.8	52.2



#14
 1,2-Dichlorobenzene
 Concen: 40.449 ng
 RT: 8.229 min Scan# 875
 Delta R.T. 0.000 min
 Lab File: BG063979.D
 Acq: 3 Feb 2025 13:49

Tgt Ion	Ratio	Lower	Upper
146	100		
148	65.0	52.0	78.0
111	47.7	38.2	57.2

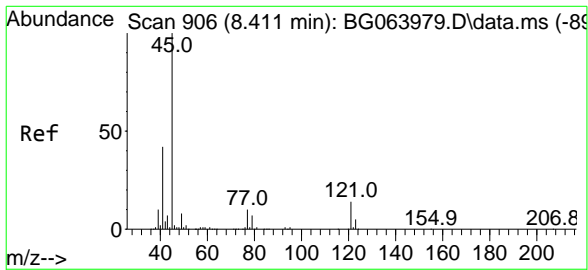
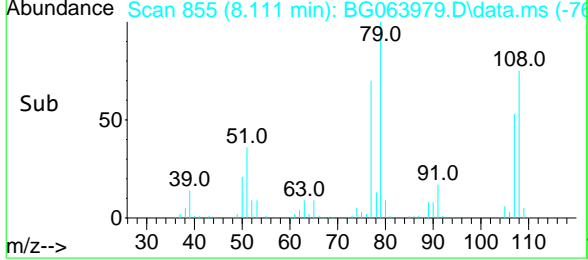
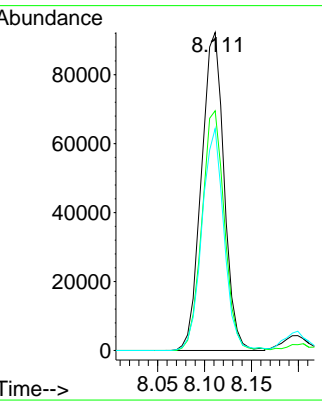
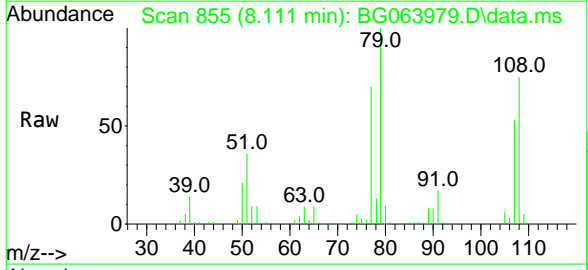




#15
 Benzyl Alcohol
 Concen: 41.530 ng
 RT: 8.111 min Scan# 85
 Delta R.T. 0.000 min
 Lab File: BG063979.D
 Acq: 3 Feb 2025 13:49

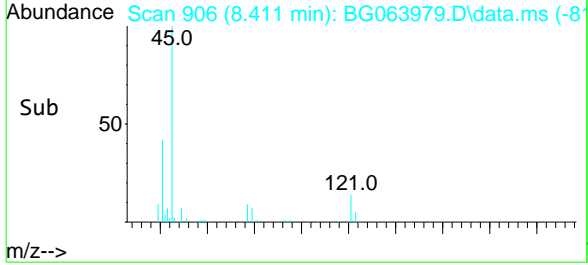
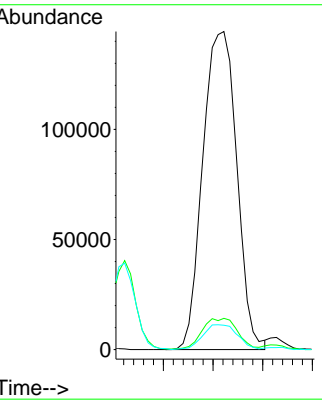
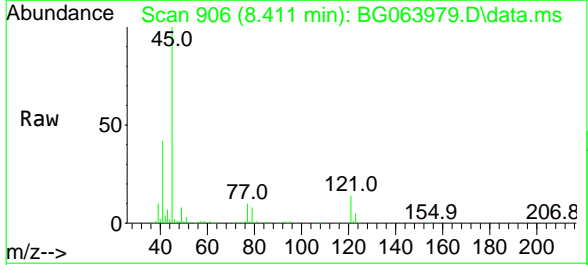
Instrument : BNA_G
 ClientSampleId : SSTDICCC040

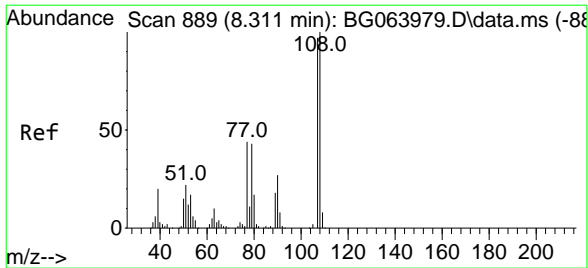
Tgt Ion	Resp	Lower	Upper
79	154672		
79	100		
108	75.4	60.3	90.5
77	69.8	55.8	83.8



#16
 2,2'-oxybis(1-Chloropropane)
 Concen: 40.378 ng
 RT: 8.411 min Scan# 906
 Delta R.T. 0.000 min
 Lab File: BG063979.D
 Acq: 3 Feb 2025 13:49

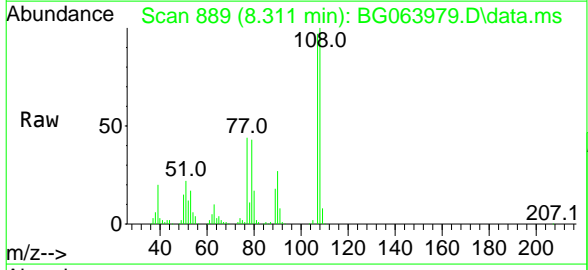
Tgt Ion	Resp	Lower	Upper
45	343411		
45	100		
77	9.8	0.0	29.8
79	7.7	0.0	27.7



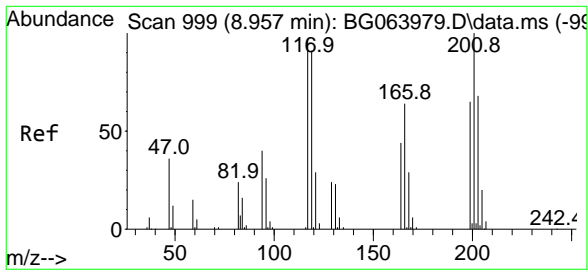
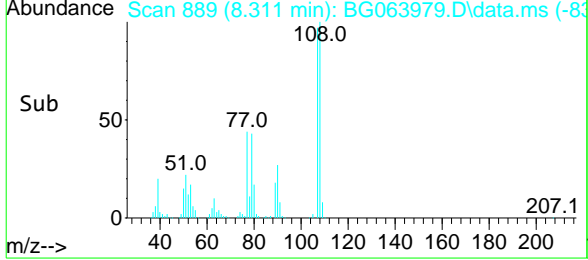
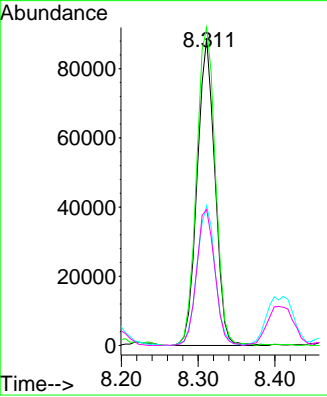


#17
 2-Methylphenol
 Concen: 42.098 ng
 RT: 8.311 min Scan# 88
 Delta R.T. 0.000 min
 Lab File: BG063979.D
 Acq: 3 Feb 2025 13:49

Instrument : BNA_G
 ClientSampleId : SSTDICCC040

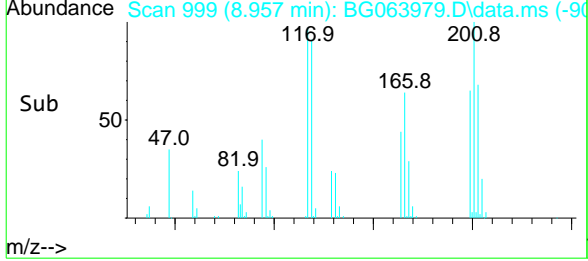
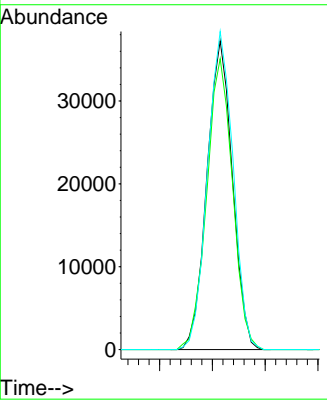
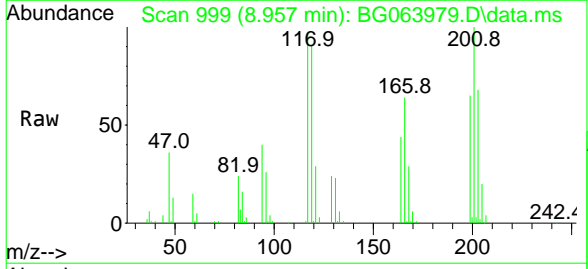


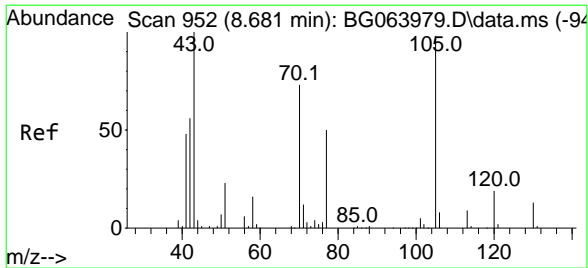
Tgt Ion	Resp	Lower	Upper
107	142808		
108	100	82.9	124.3
77	45.5	36.4	54.6
79	44.2	35.4	53.0



#18
 Hexachloroethane
 Concen: 42.748 ng
 RT: 8.957 min Scan# 999
 Delta R.T. 0.000 min
 Lab File: BG063979.D
 Acq: 3 Feb 2025 13:49

Tgt Ion	Resp	Lower	Upper
117	62553		
119	100	75.4	113.0
201	94.2	82.4	123.6

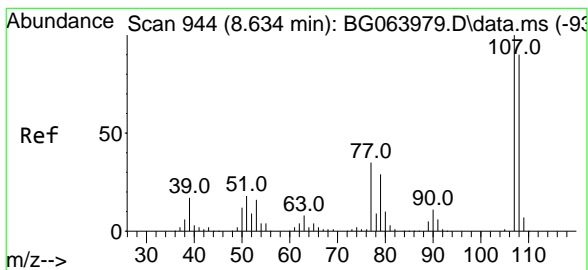
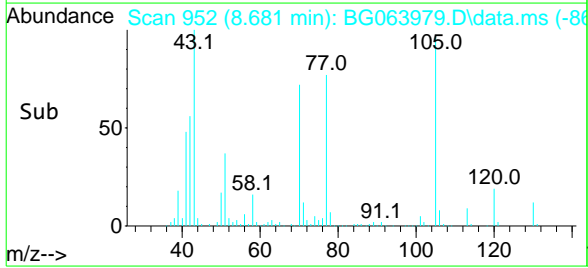
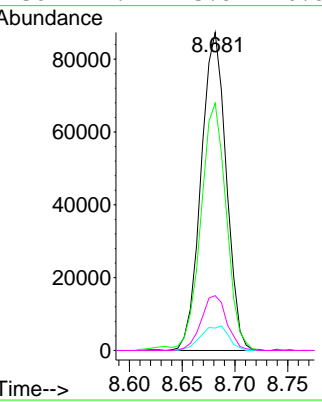
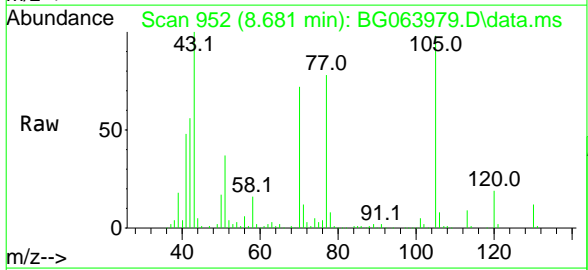




#19
 n-Nitroso-di-n-propylamine
 Concen: 41.931 ng
 RT: 8.681 min Scan# 952
 Delta R.T. 0.000 min
 Lab File: BG063979.D
 Acq: 3 Feb 2025 13:49

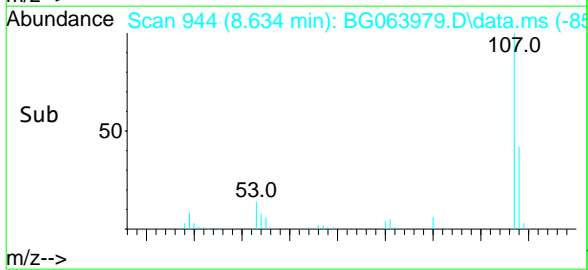
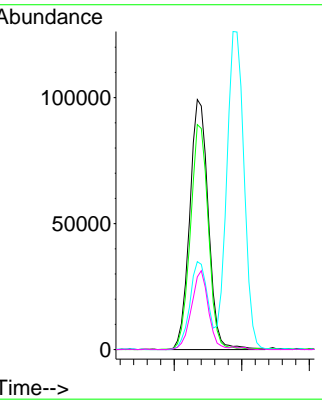
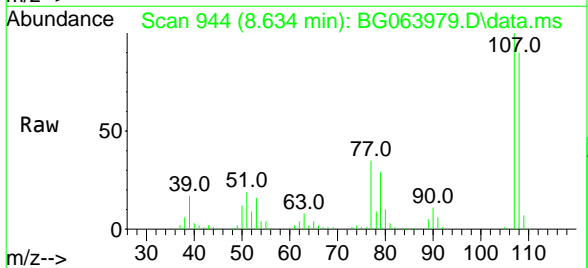
Instrument : BNA_G
 ClientSampleId : SSTDICCC040

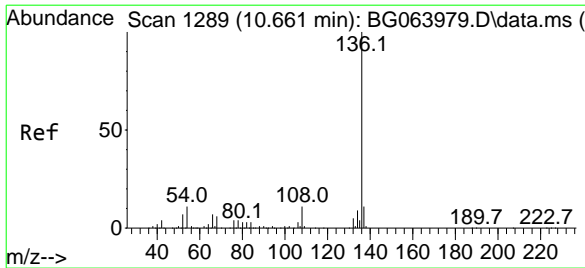
Tgt Ion	Resp	Lower	Upper
70	100		
42	77.8	62.2	93.4
101	7.0	5.6	8.4
130	17.2	13.8	20.6



#20
 3+4-Methylphenols
 Concen: 42.160 ng
 RT: 8.634 min Scan# 944
 Delta R.T. 0.000 min
 Lab File: BG063979.D
 Acq: 3 Feb 2025 13:49

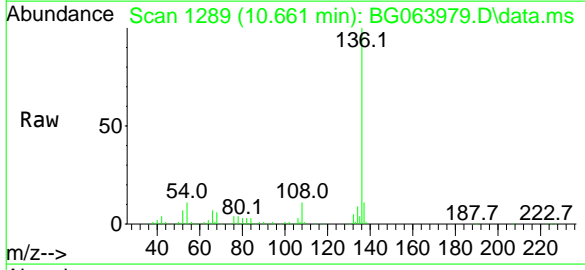
Tgt Ion	Resp	Lower	Upper
107	100		
108	90.0	70.0	110.0
77	35.2	15.2	55.2
79	29.1	9.1	49.1





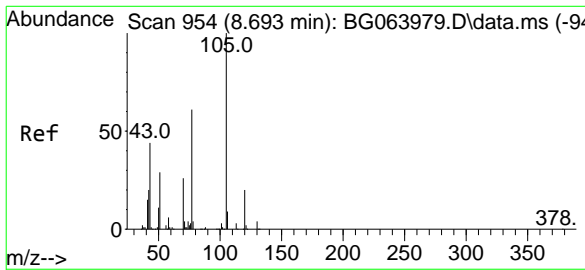
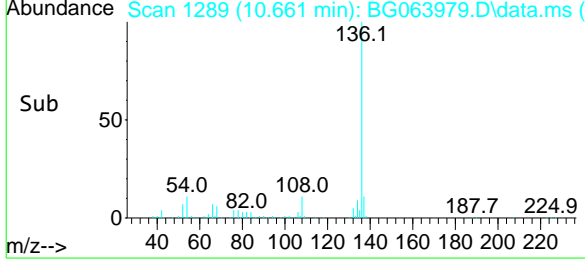
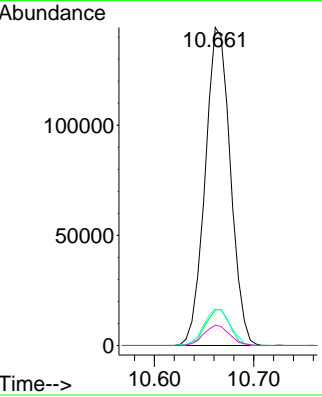
#21
 Naphthalene-d8
 Concen: 20.000 ng
 RT: 10.661 min Scan# 12
 Delta R.T. 0.000 min
 Lab File: BG063979.D
 Acq: 3 Feb 2025 13:49

Instrument :
 BNA_G
 ClientSampleId :
 SSTDICC040



Tgt Ion:136 Resp: 254634

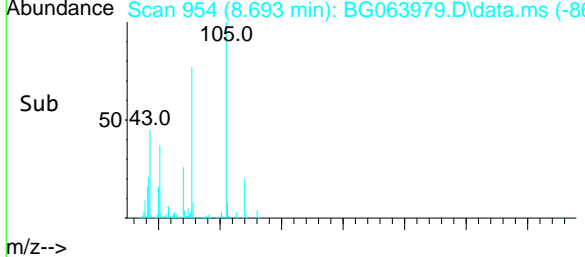
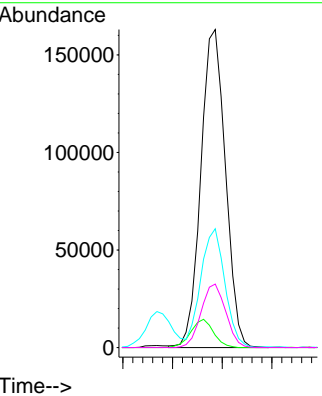
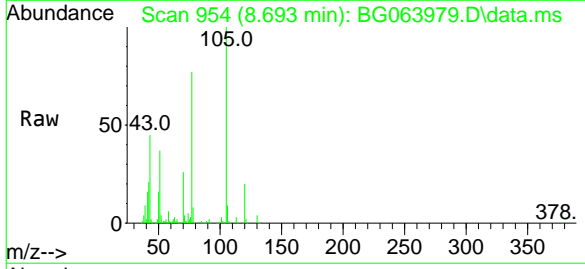
Ion	Ratio	Lower	Upper
136	100		
137	11.1	8.9	13.3
54	11.5	9.2	13.8
68	6.4	5.1	7.7

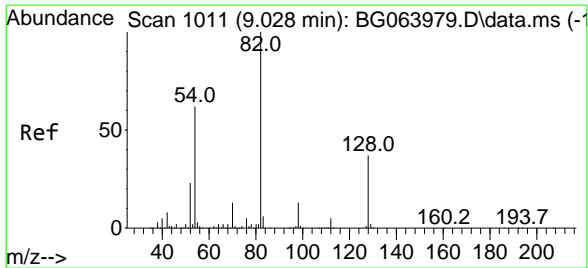


#22
 Acetophenone
 Concen: 40.120 ng
 RT: 8.693 min Scan# 954
 Delta R.T. 0.000 min
 Lab File: BG063979.D
 Acq: 3 Feb 2025 13:49

Tgt Ion:105 Resp: 280690

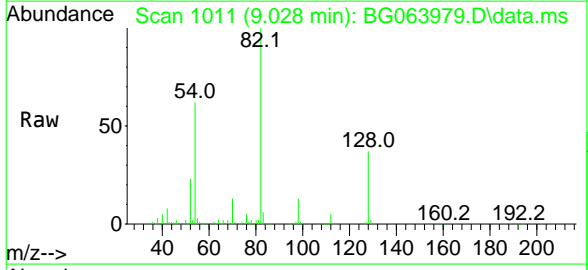
Ion	Ratio	Lower	Upper
105	100		
71	3.9	3.1	4.7
51	37.4	29.9	44.9
120	20.0	16.0	24.0





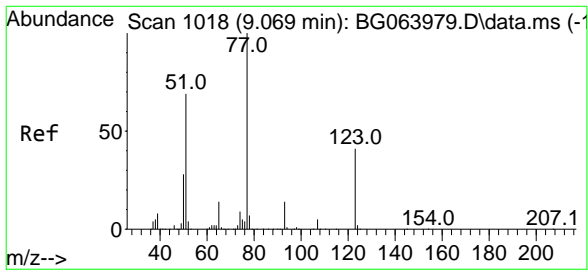
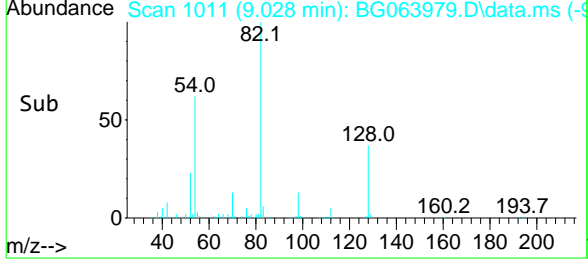
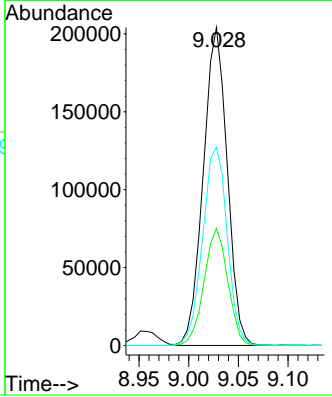
#23
 Nitrobenzene-d5
 Concen: 81.676 ng
 RT: 9.028 min Scan# 1011
 Delta R.T. -0.000 min
 Lab File: BG063979.D
 Acq: 3 Feb 2025 13:49

Instrument : BNA_G
 ClientSampleId : SSTDICC040



Tgt Ion: 82 Resp: 342204

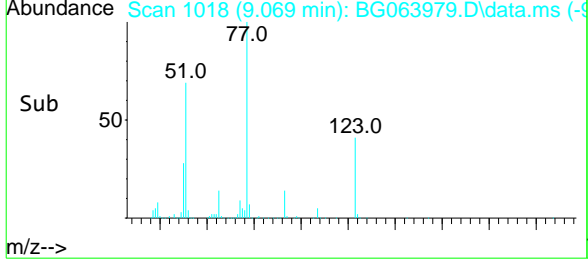
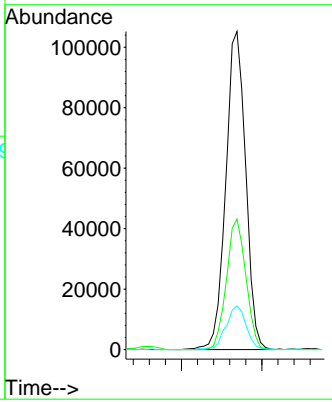
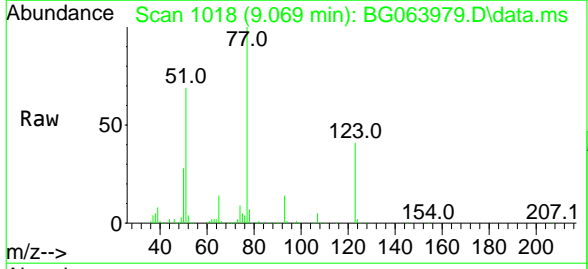
Ion	Ratio	Lower	Upper
82	100		
128	36.8	29.4	44.2
54	62.4	49.9	74.9

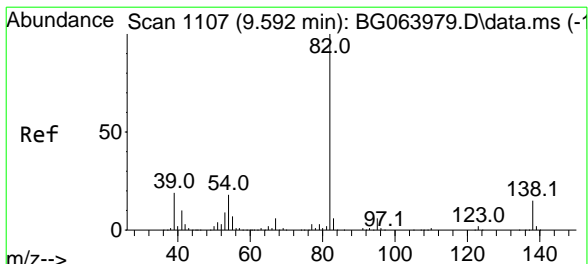


#24
 Nitrobenzene
 Concen: 38.095 ng
 RT: 9.069 min Scan# 1018
 Delta R.T. 0.000 min
 Lab File: BG063979.D
 Acq: 3 Feb 2025 13:49

Tgt Ion: 77 Resp: 180345

Ion	Ratio	Lower	Upper
77	100		
123	41.1	32.9	49.3
65	13.8	11.0	16.6

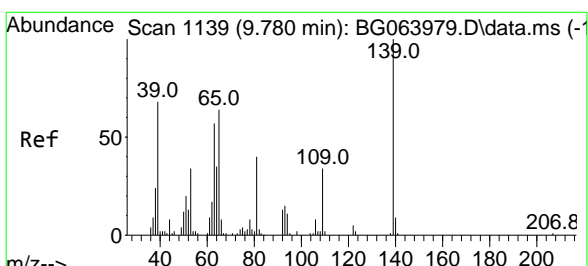
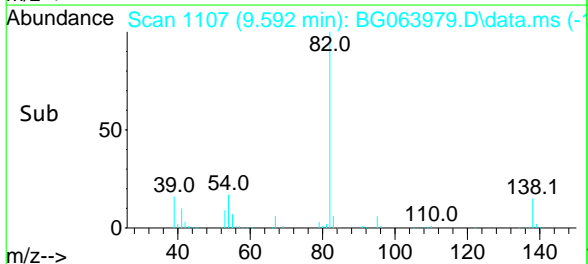
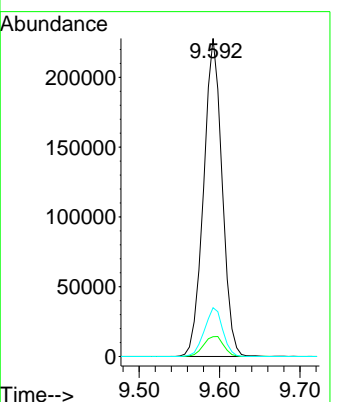
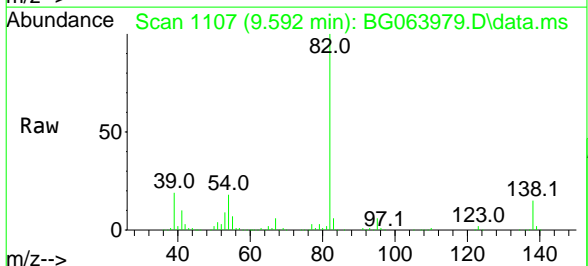




#25
 Isophorone
 Concen: 40.103 ng
 RT: 9.592 min Scan# 1107
 Delta R.T. -0.000 min
 Lab File: BG063979.D
 Acq: 3 Feb 2025 13:49

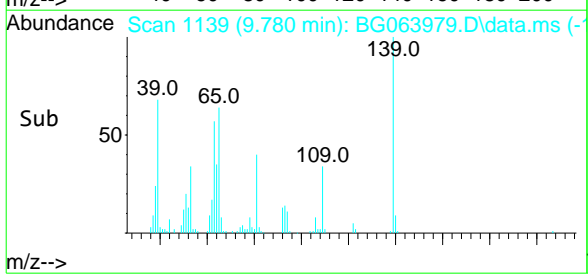
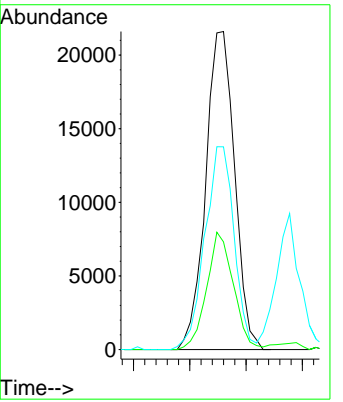
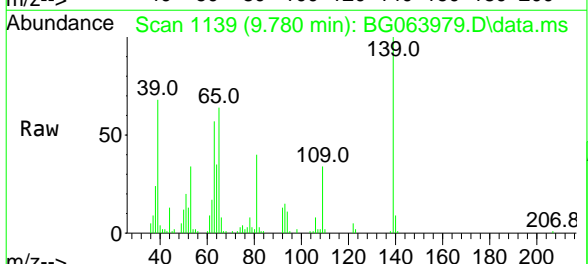
Instrument : BNA_G
 ClientSampleId : SSTDICCC040

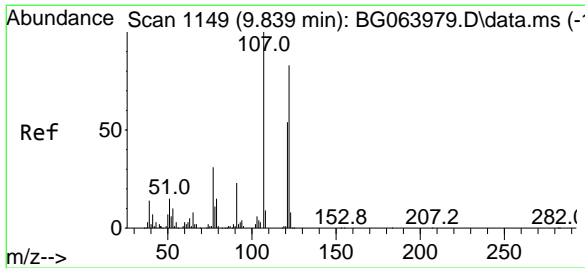
Tgt Ion	Resp	Lower	Upper
82	100		
95	6.2	5.0	7.4
138	15.3	12.2	18.4



#26
 2-Nitrophenol
 Concen: 39.559 ng
 RT: 9.780 min Scan# 1139
 Delta R.T. -0.000 min
 Lab File: BG063979.D
 Acq: 3 Feb 2025 13:49

Tgt Ion	Resp	Lower	Upper
139	100		
109	33.9	27.1	40.7
65	63.7	51.0	76.6





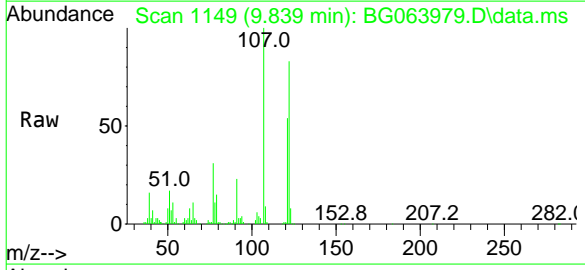
#27
 2,4-Dimethylphenol
 Concen: 42.083 ng
 RT: 9.839 min Scan# 1149
 Delta R.T. -0.000 min
 Lab File: BG063979.D
 Acq: 3 Feb 2025 13:49

Instrument :

BNA_G

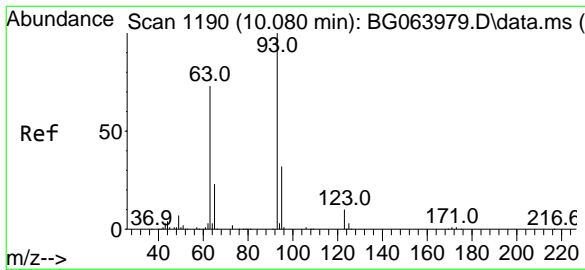
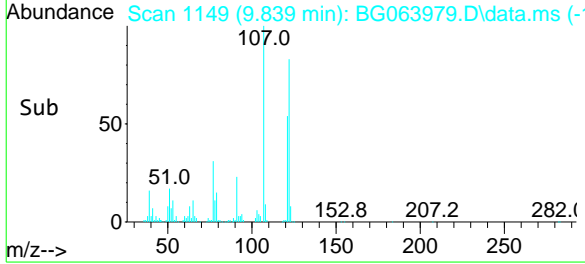
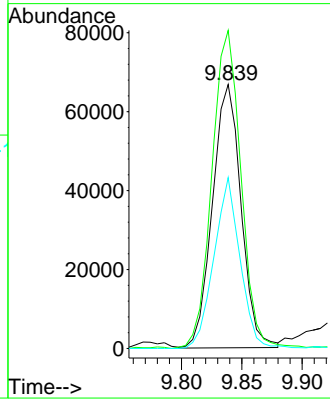
ClientSampleId :

SSTDICCC040



Tgt Ion:122 Resp: 109948

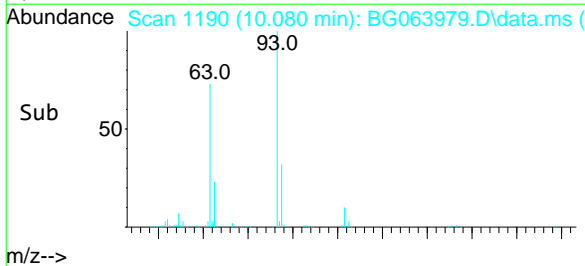
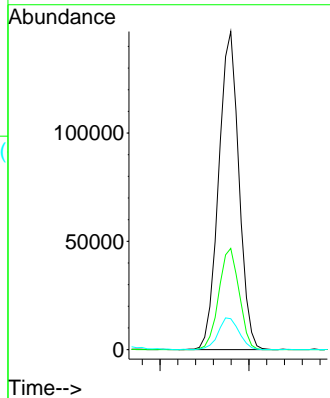
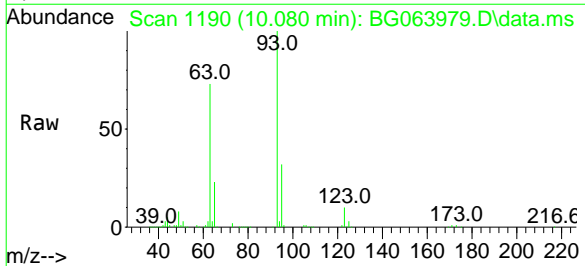
Ion	Ratio	Lower	Upper
122	100		
107	120.5	96.4	144.6
121	64.7	51.8	77.6

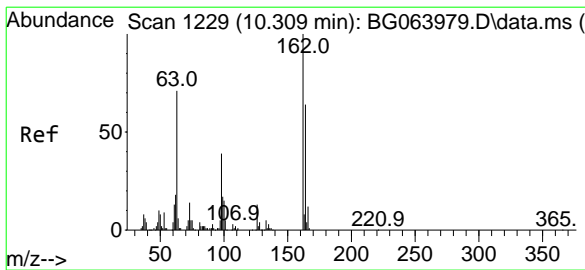


#28
 bis(2-Chloroethoxy)methane
 Concen: 40.182 ng
 RT: 10.080 min Scan# 1190
 Delta R.T. -0.000 min
 Lab File: BG063979.D
 Acq: 3 Feb 2025 13:49

Tgt Ion: 93 Resp: 232223

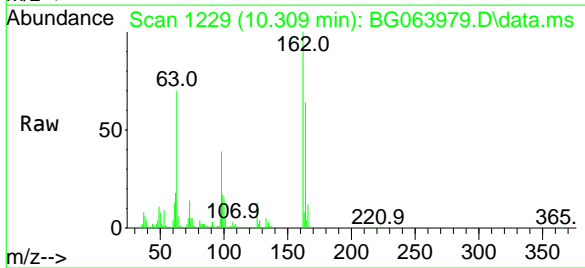
Ion	Ratio	Lower	Upper
93	100		
95	31.8	25.4	38.2
123	9.7	7.8	11.6





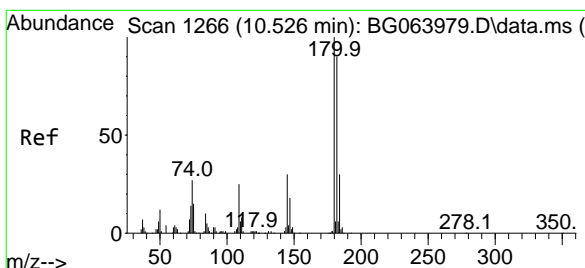
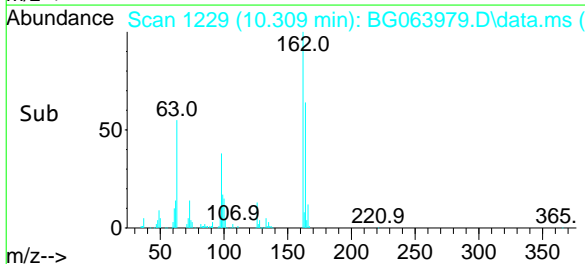
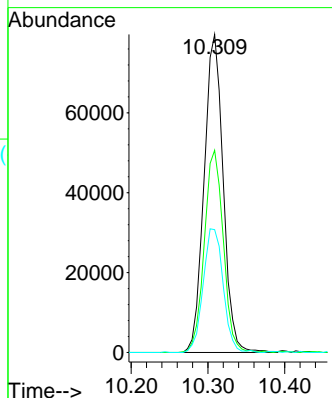
#29
 2,4-Dichlorophenol
 Concen: 38.427 ng
 RT: 10.309 min Scan# 1229
 Delta R.T. -0.000 min
 Lab File: BG063979.D
 Acq: 3 Feb 2025 13:49

Instrument :
 BNA_G
 ClientSampleId :
 SSTDICCC040



Tgt Ion:162 Resp: 137391

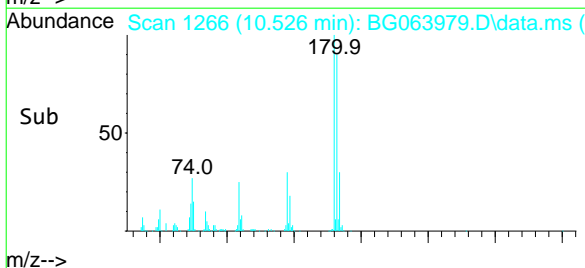
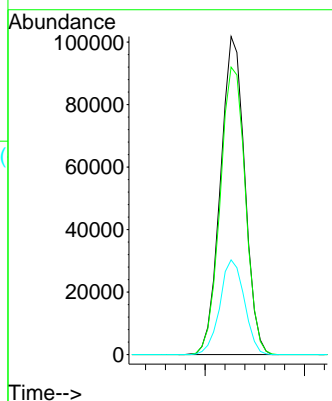
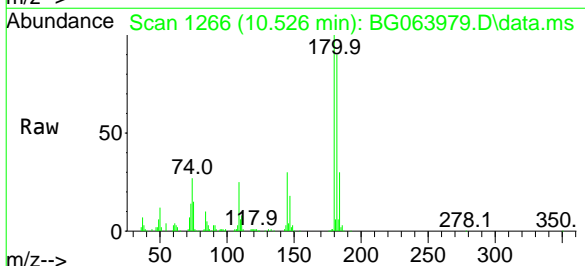
Ion	Ratio	Lower	Upper
162	100		
164	63.6	43.6	83.6
98	38.6	18.6	58.6

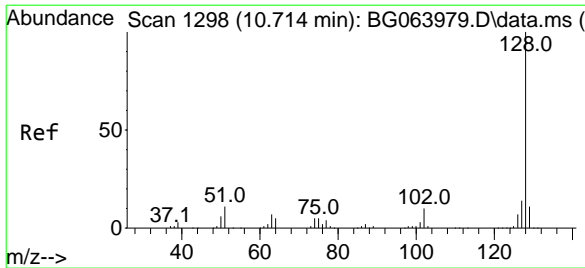


#30
 1,2,4-Trichlorobenzene
 Concen: 40.268 ng
 RT: 10.526 min Scan# 1266
 Delta R.T. 0.000 min
 Lab File: BG063979.D
 Acq: 3 Feb 2025 13:49

Tgt Ion:180 Resp: 172841

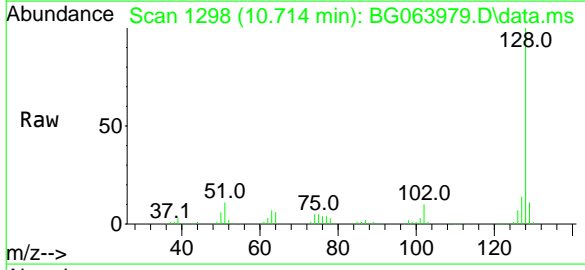
Ion	Ratio	Lower	Upper
180	100		
182	90.4	72.3	108.5
145	29.8	23.8	35.8



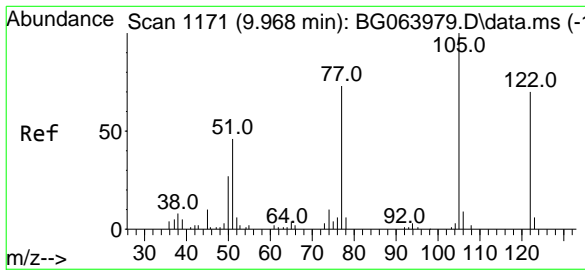
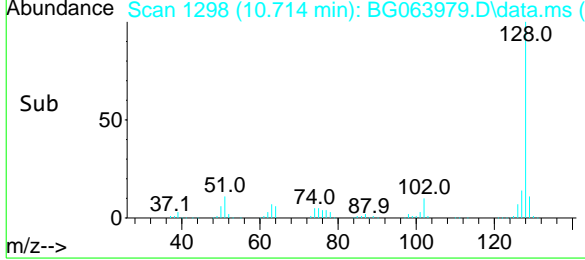
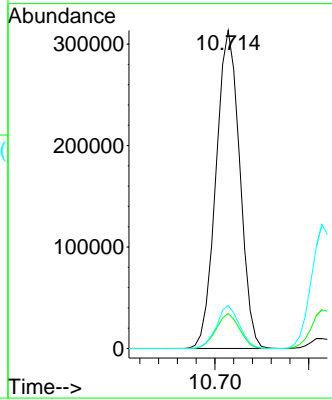


#31
 Naphthalene
 Concen: 40.354 ng
 RT: 10.714 min Scan# 1298
 Delta R.T. 0.000 min
 Lab File: BG063979.D
 Acq: 3 Feb 2025 13:49

Instrument : BNA_G
 ClientSampleId : SSTDICCC040

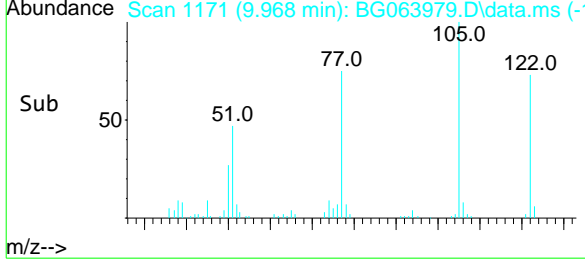
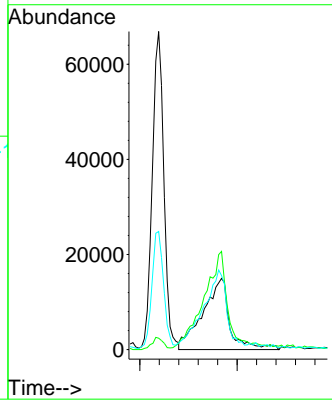
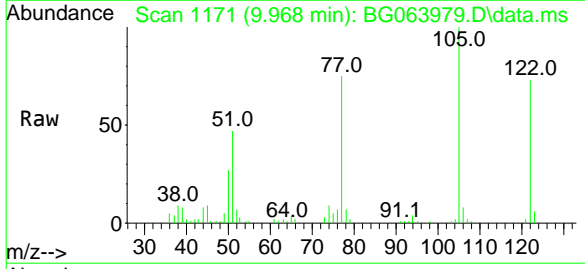


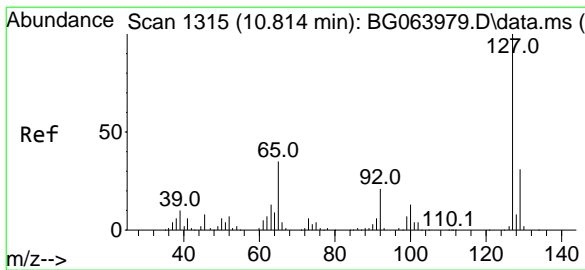
Tgt Ion:128 Resp: 550914
 Ion Ratio Lower Upper
 128 100
 129 11.0 8.8 13.2
 127 13.5 10.8 16.2



#32
 Benzoic acid
 Concen: 37.919 ng m
 RT: 9.968 min Scan# 1171
 Delta R.T. -0.000 min
 Lab File: BG063979.D
 Acq: 3 Feb 2025 13:49

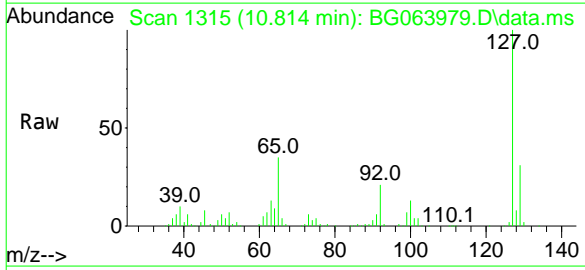
Tgt Ion:122 Resp: 57583
 Ion Ratio Lower Upper
 122 100
 105 137.9 117.9 157.9
 77 103.9 83.9 123.9





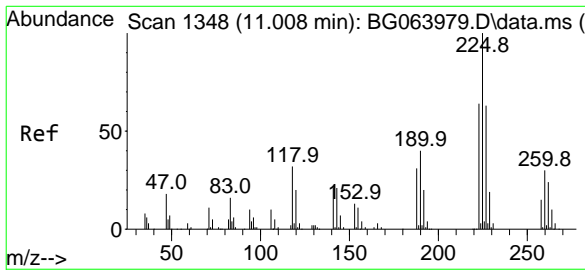
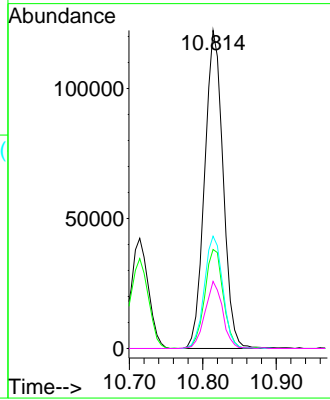
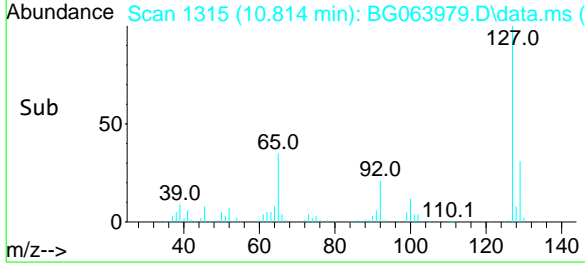
#33
 4-Chloroaniline
 Concen: 40.878 ng
 RT: 10.814 min Scan# 1315
 Delta R.T. 0.000 min
 Lab File: BG063979.D
 Acq: 3 Feb 2025 13:49

Instrument : BNA_G
 ClientSampleId : SSTDICCC040

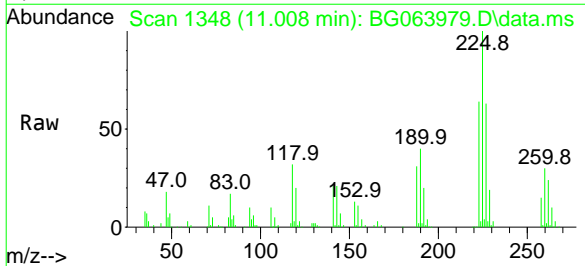


Tgt Ion:127 Resp: 213817

Ion	Ratio	Lower	Upper
127	100		
129	31.1	24.9	37.3
65	35.3	28.2	42.4
92	21.1	16.9	25.3

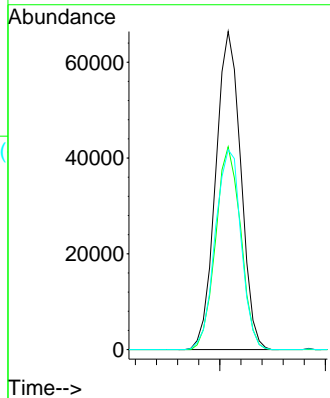
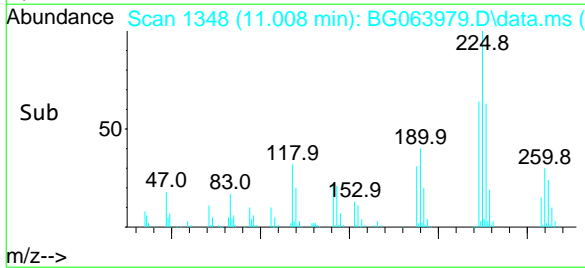


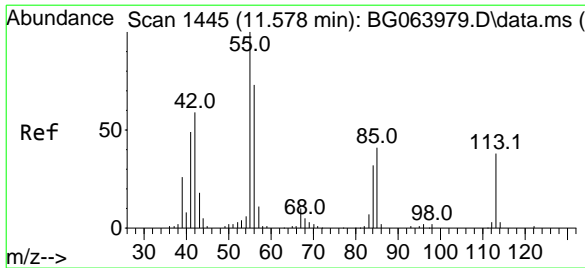
#34
 Hexachlorobutadiene
 Concen: 40.173 ng
 RT: 11.008 min Scan# 1348
 Delta R.T. 0.000 min
 Lab File: BG063979.D
 Acq: 3 Feb 2025 13:49



Tgt Ion:225 Resp: 109810

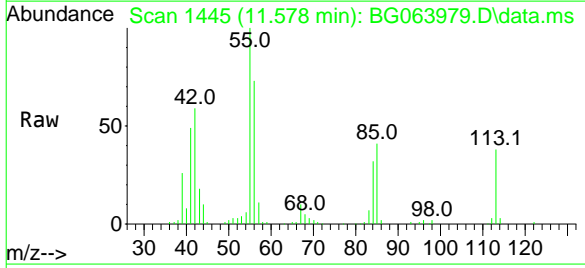
Ion	Ratio	Lower	Upper
225	100		
223	63.8	51.0	76.6
227	62.9	50.3	75.5



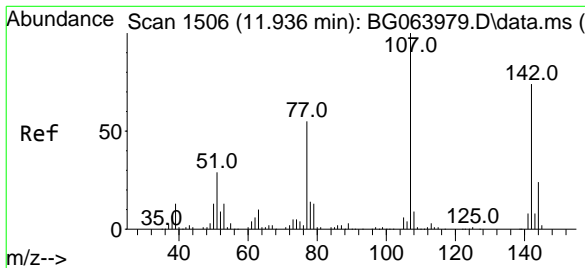
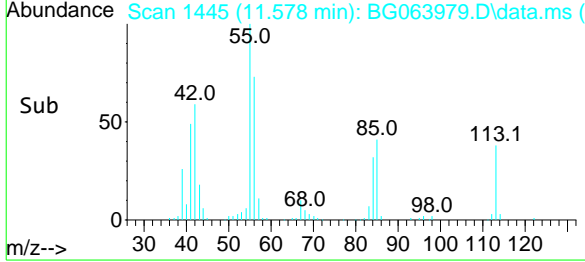
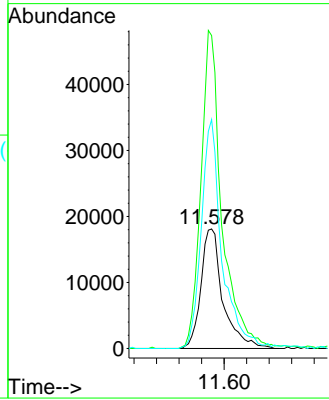


#35
 Caprolactam
 Concen: 38.096 ng
 RT: 11.578 min Scan# 14
 Delta R.T. -0.000 min
 Lab File: BG063979.D
 Acq: 3 Feb 2025 13:49

Instrument :
 BNA_G
 ClientSampleId :
 SSTDICCC040

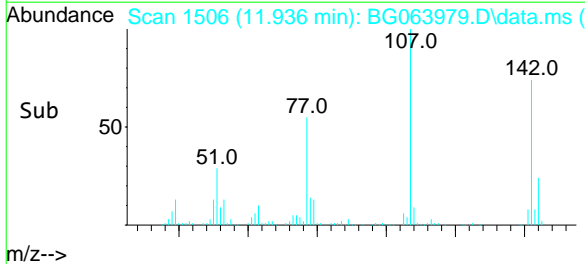
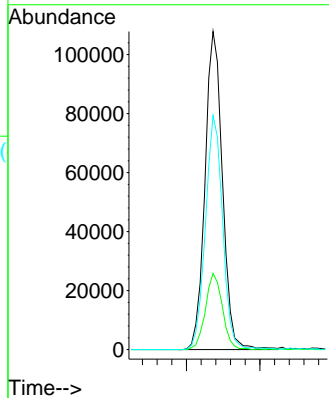
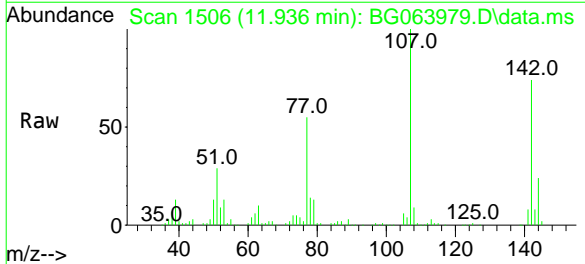


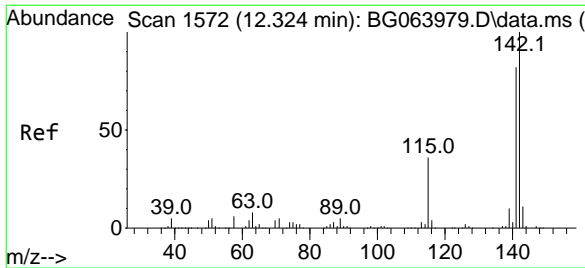
Tgt Ion:113 Resp: 49255
 Ion Ratio Lower Upper
 113 100
 55 261.8 241.8 281.8
 56 191.5 171.5 211.5



#36
 4-Chloro-3-methylphenol
 Concen: 42.565 ng
 RT: 11.936 min Scan# 1506
 Delta R.T. 0.000 min
 Lab File: BG063979.D
 Acq: 3 Feb 2025 13:49

Tgt Ion:107 Resp: 178005
 Ion Ratio Lower Upper
 107 100
 144 24.0 19.2 28.8
 142 73.6 58.9 88.3

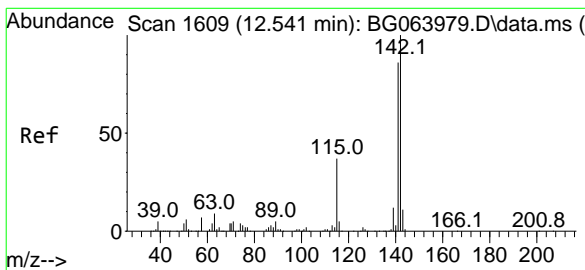
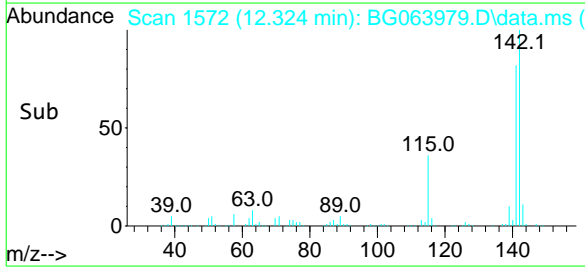
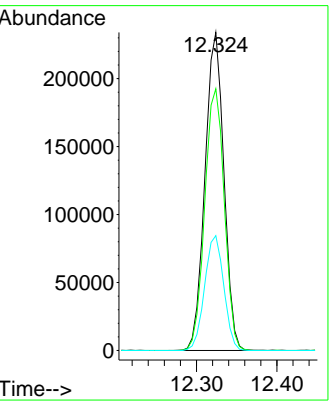
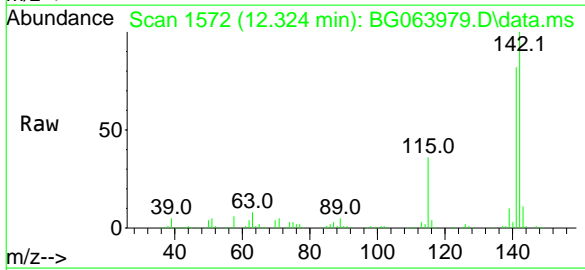




#37
 2-Methylnaphthalene
 Concen: 40.211 ng
 RT: 12.324 min Scan# 1572
 Delta R.T. 0.000 min
 Lab File: BG063979.D
 Acq: 3 Feb 2025 13:49

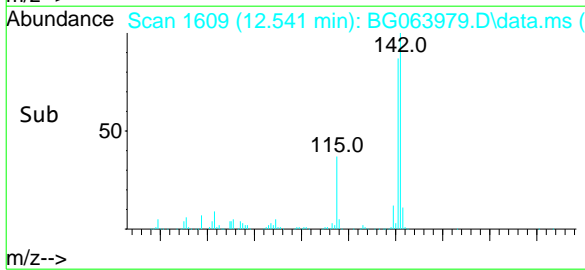
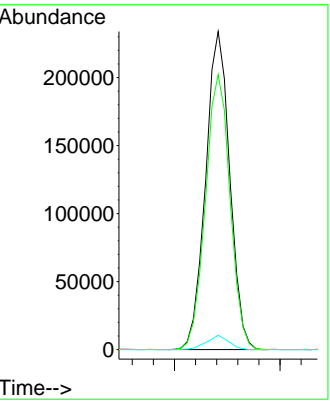
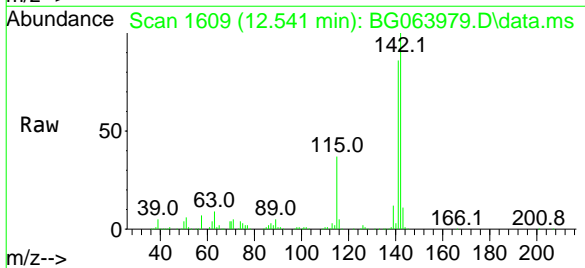
Instrument : BNA_G
 ClientSampleId : SSTDICCC040

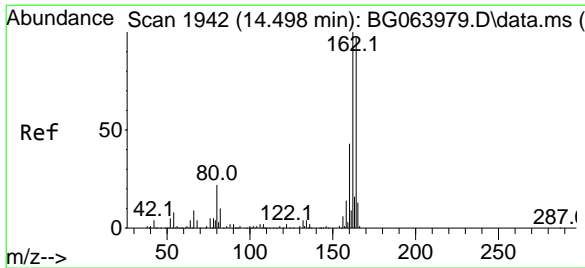
Tgt Ion	Resp	Lower	Upper
142	100		
141	82.3	65.8	98.8
115	36.1	28.9	43.3



#38
 1-Methylnaphthalene
 Concen: 39.502 ng
 RT: 12.541 min Scan# 1609
 Delta R.T. 0.000 min
 Lab File: BG063979.D
 Acq: 3 Feb 2025 13:49

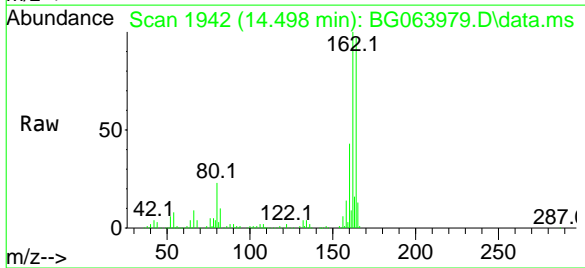
Tgt Ion	Resp	Lower	Upper
142	100		
141	86.5	69.2	103.8
116	4.5	3.6	5.4





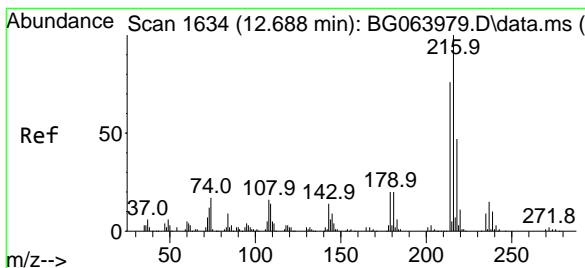
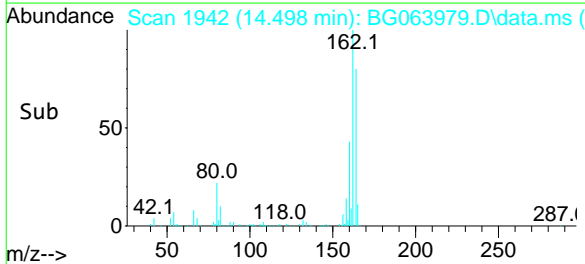
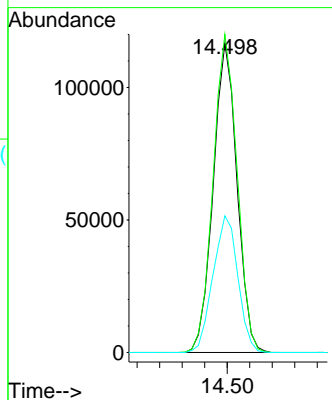
#39
 Acenaphthene-d10
 Concen: 20.000 ng
 RT: 14.498 min Scan# 19
 Delta R.T. 0.000 min
 Lab File: BG063979.D
 Acq: 3 Feb 2025 13:49

Instrument :
 BNA_G
 ClientSampleId :
 SSTDICCC040



Tgt Ion:164 Resp: 171313

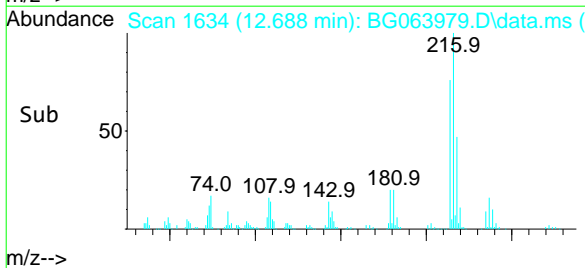
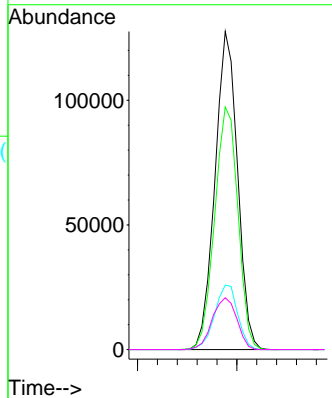
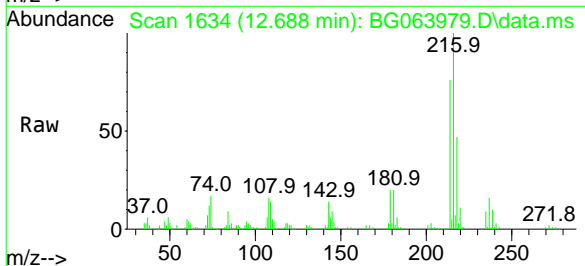
Ion	Ratio	Lower	Upper
164	100		
162	102.9	82.3	123.5
160	44.2	35.4	53.0

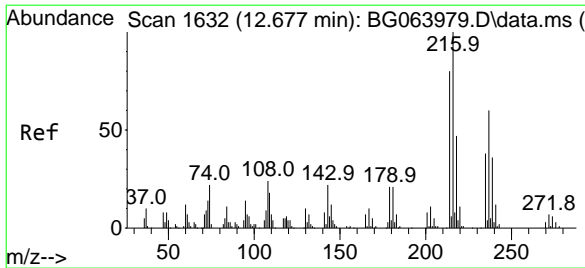


#40
 1,2,4,5-Tetrachlorobenzene
 Concen: 39.822 ng
 RT: 12.688 min Scan# 1634
 Delta R.T. 0.000 min
 Lab File: BG063979.D
 Acq: 3 Feb 2025 13:49

Tgt Ion:216 Resp: 201175

Ion	Ratio	Lower	Upper
216	100		
214	78.6	62.9	94.3
179	20.8	16.6	25.0
108	17.8	14.2	21.4

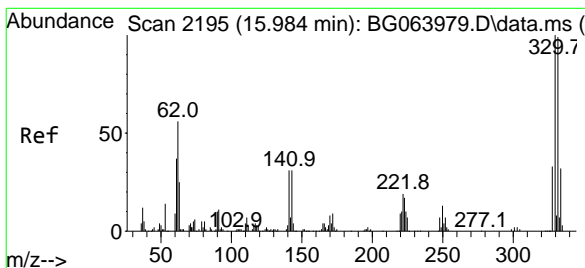
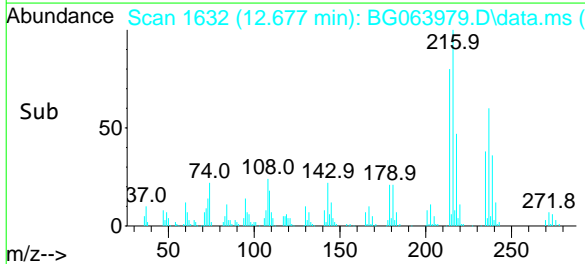
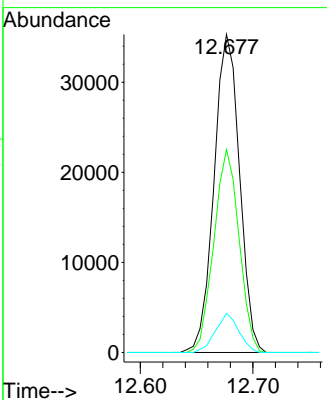
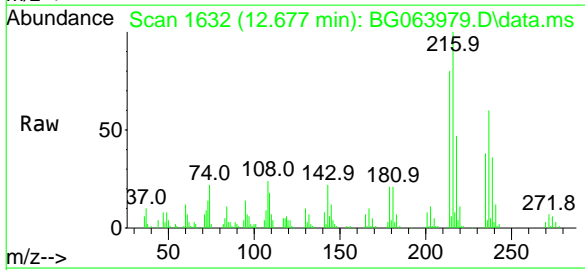




#41
 Hexachlorocyclopentadiene
 Concen: 40.817 ng
 RT: 12.677 min Scan# 16
 Delta R.T. -0.000 min
 Lab File: BG063979.D
 Acq: 3 Feb 2025 13:49

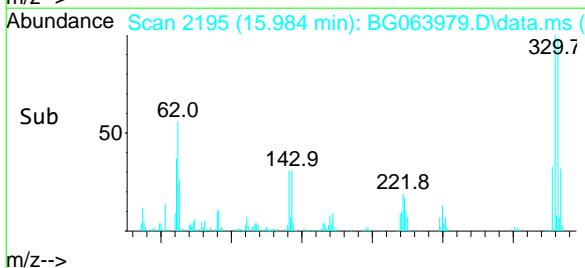
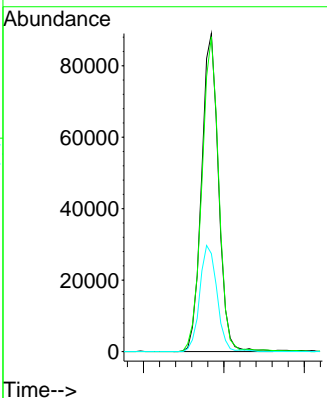
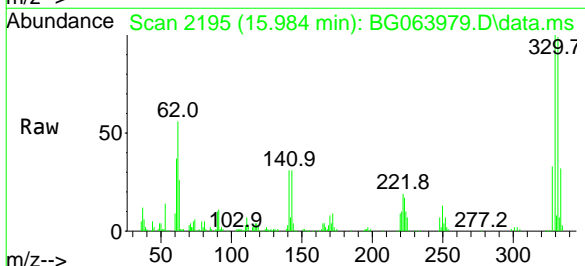
Instrument :
 BNA_G
 ClientSampleId :
 SSTDICCC040

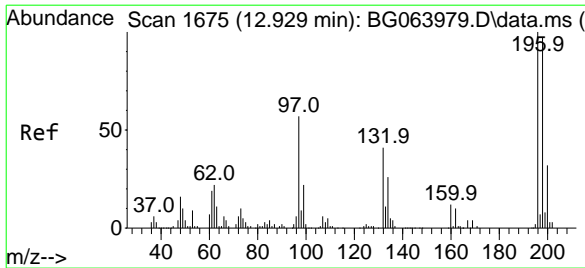
Tgt Ion	Resp	Lower	Upper
237	100		
235	63.8	43.8	83.8
272	12.3	0.0	32.3



#42
 2,4,6-Tribromophenol
 Concen: 73.373 ng
 RT: 15.984 min Scan# 2195
 Delta R.T. 0.000 min
 Lab File: BG063979.D
 Acq: 3 Feb 2025 13:49

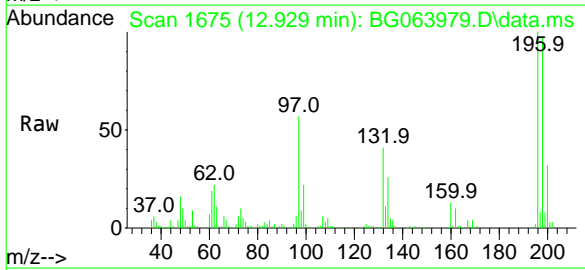
Tgt Ion	Resp	Lower	Upper
330	100		
332	98.8	79.0	118.6
141	34.0	27.2	40.8



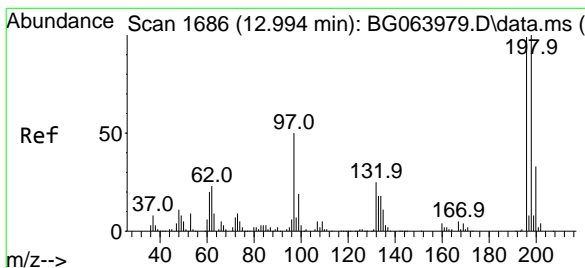
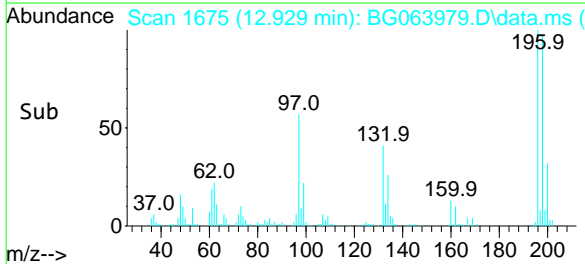
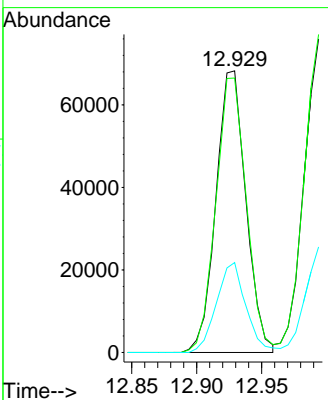


#43
 2,4,6-Trichlorophenol
 Concen: 38.035 ng
 RT: 12.929 min Scan# 1675
 Delta R.T. 0.000 min
 Lab File: BG063979.D
 Acq: 3 Feb 2025 13:49

Instrument : BNA_G
 ClientSampleId : SSTDICCC040

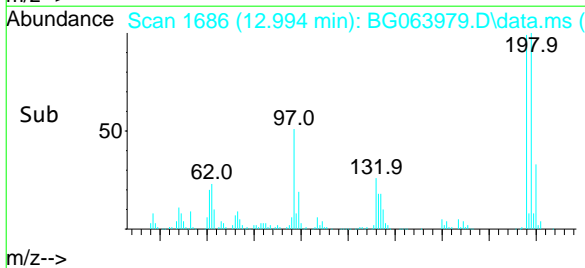
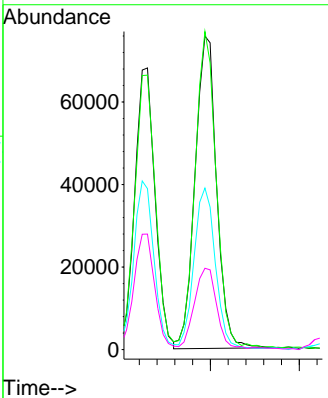
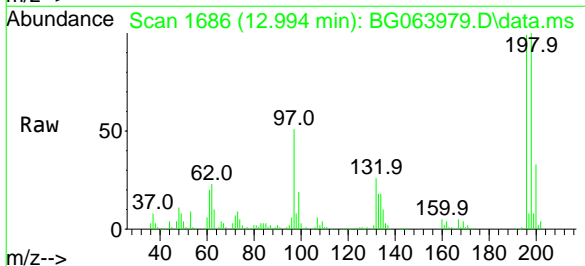


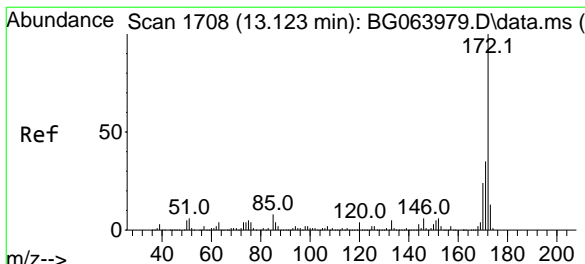
Tgt Ion:196 Resp: 109593
 Ion Ratio Lower Upper
 196 100
 198 97.4 77.9 116.9
 200 31.9 25.5 38.3



#44
 2,4,5-Trichlorophenol
 Concen: 39.072 ng
 RT: 12.994 min Scan# 1686
 Delta R.T. -0.000 min
 Lab File: BG063979.D
 Acq: 3 Feb 2025 13:49

Tgt Ion:196 Resp: 127838
 Ion Ratio Lower Upper
 196 100
 198 101.4 81.1 121.7
 97 51.5 41.2 61.8
 132 25.9 20.7 31.1





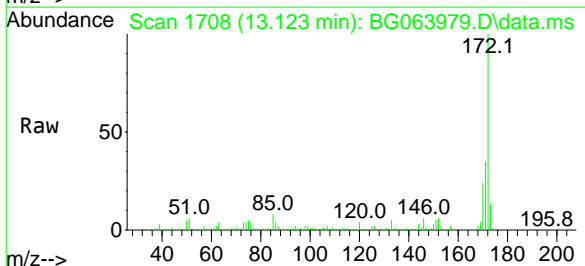
#45
 2-Fluorobiphenyl
 Concen: 80.395 ng
 RT: 13.123 min Scan# 1708
 Delta R.T. 0.000 min
 Lab File: BG063979.D
 Acq: 3 Feb 2025 13:49

Instrument :

BNA_G

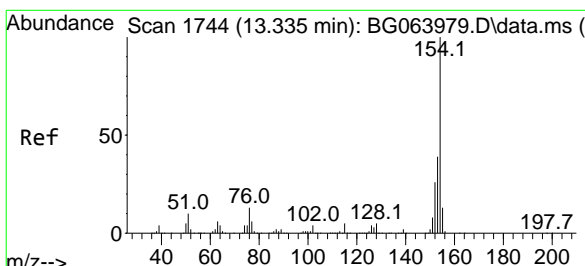
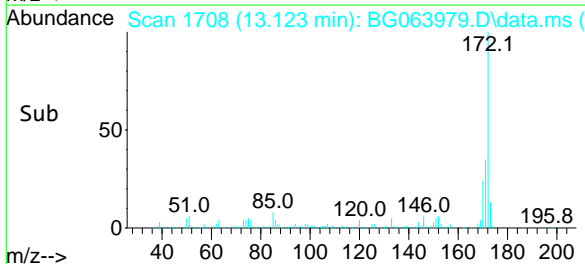
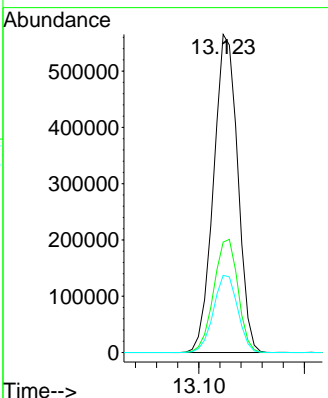
ClientSampleId :

SSTDICCC040



Tgt Ion:172 Resp: 898918

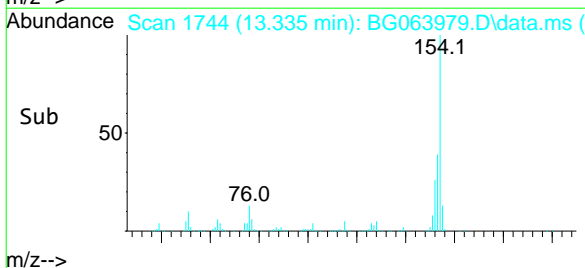
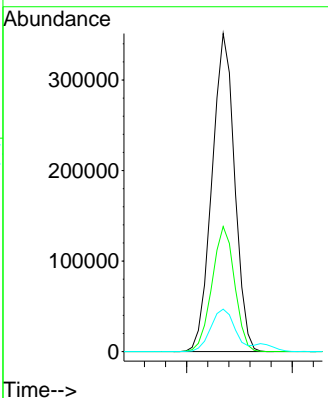
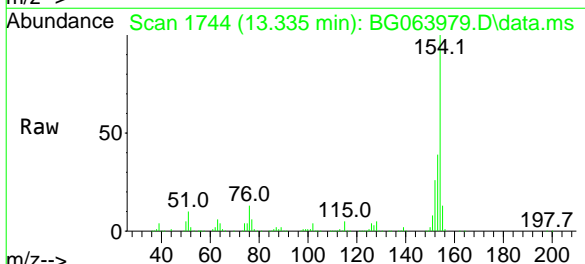
Ion	Ratio	Lower	Upper
172	100		
171	34.7	27.8	41.6
170	24.3	19.4	29.2

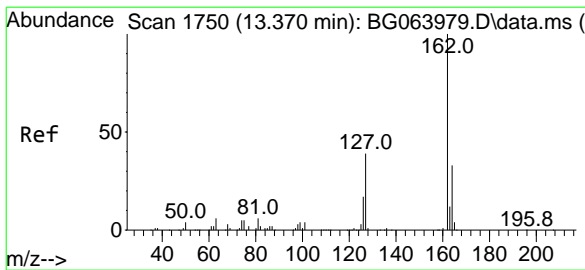


#46
 1,1'-Biphenyl
 Concen: 40.097 ng
 RT: 13.335 min Scan# 1744
 Delta R.T. -0.000 min
 Lab File: BG063979.D
 Acq: 3 Feb 2025 13:49

Tgt Ion:154 Resp: 522991

Ion	Ratio	Lower	Upper
154	100		
153	39.3	19.3	59.3
76	13.3	0.0	33.3





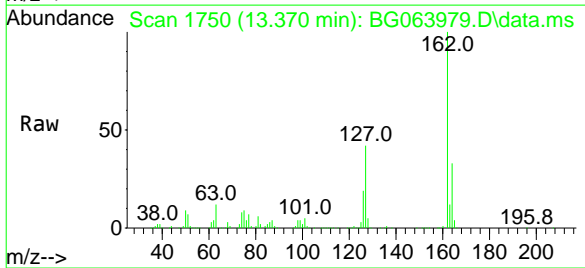
#47
 2-Chloronaphthalene
 Concen: 39.825 ng
 RT: 13.370 min Scan# 1750
 Delta R.T. -0.000 min
 Lab File: BG063979.D
 Acq: 3 Feb 2025 13:49

Instrument :

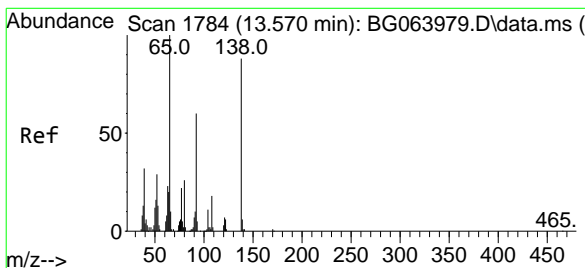
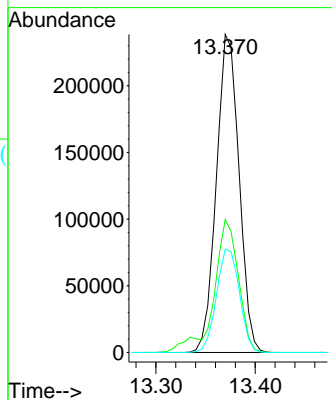
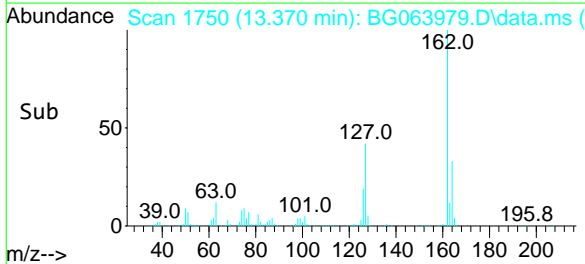
BNA_G

ClientSampleId :

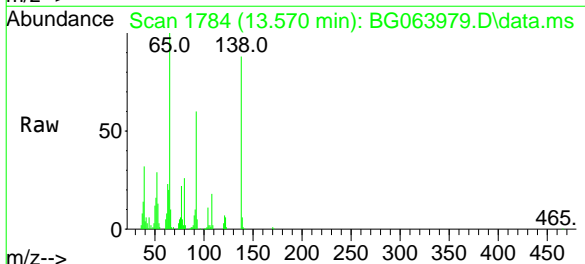
SSTDICCC040



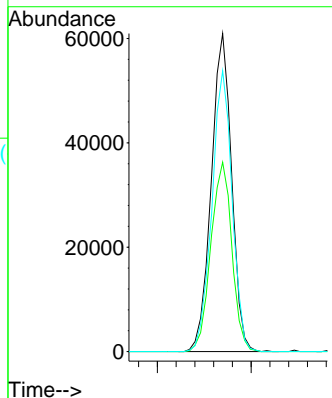
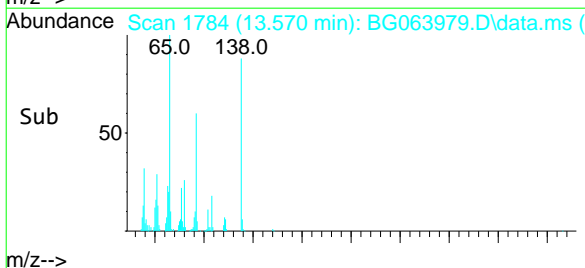
Tgt Ion:162 Resp: 378606
 Ion Ratio Lower Upper
 162 100
 127 41.8 33.4 50.2
 164 32.5 26.0 39.0

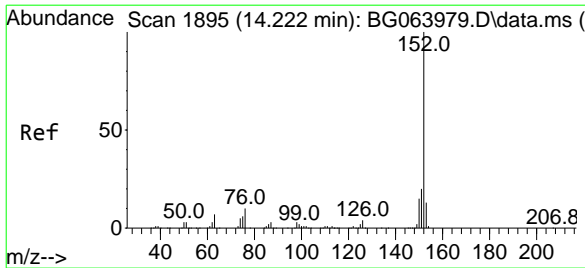


#48
 2-Nitroaniline
 Concen: 38.321 ng
 RT: 13.570 min Scan# 1784
 Delta R.T. -0.000 min
 Lab File: BG063979.D
 Acq: 3 Feb 2025 13:49



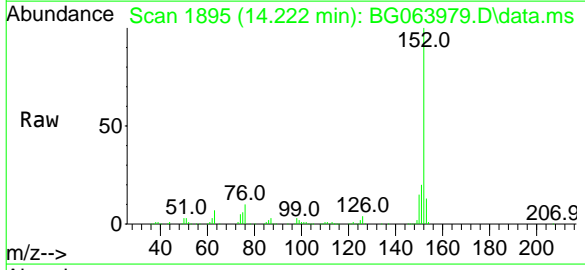
Tgt Ion: 65 Resp: 91764
 Ion Ratio Lower Upper
 65 100
 92 59.5 47.6 71.4
 138 88.3 70.6 106.0



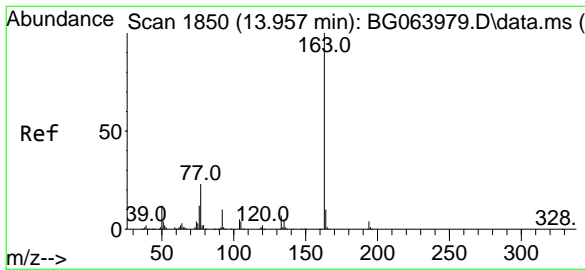
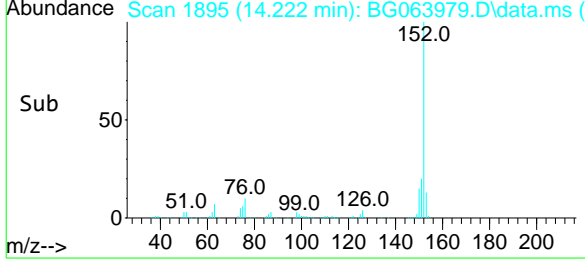
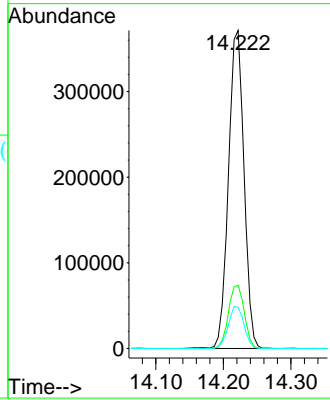


#49
 Acenaphthylene
 Concen: 40.161 ng
 RT: 14.222 min Scan# 18
 Delta R.T. 0.000 min
 Lab File: BG063979.D
 Acq: 3 Feb 2025 13:49

Instrument :
 BNA_G
 ClientSampleId :
 SSTDICCC040

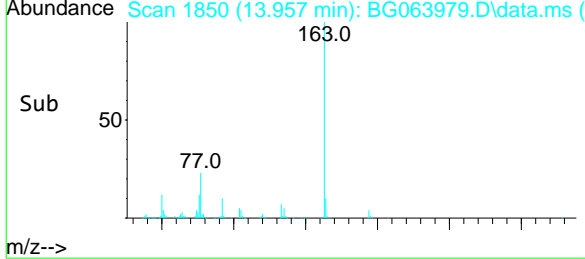
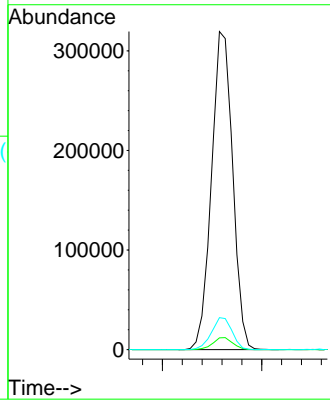
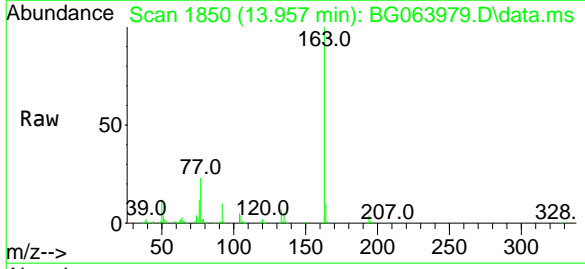


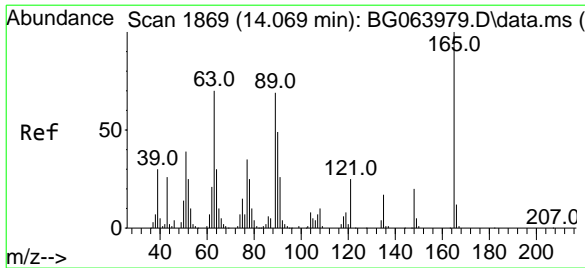
Tgt Ion:152 Resp: 593049
 Ion Ratio Lower Upper
 152 100
 151 19.9 15.9 23.9
 153 12.9 10.3 15.5



#50
 Dimethylphthalate
 Concen: 41.622 ng
 RT: 13.957 min Scan# 1850
 Delta R.T. 0.000 min
 Lab File: BG063979.D
 Acq: 3 Feb 2025 13:49

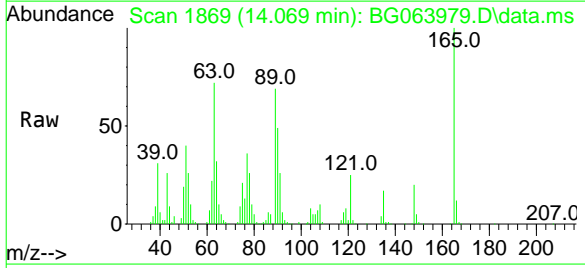
Tgt Ion:163 Resp: 472774
 Ion Ratio Lower Upper
 163 100
 194 3.7 3.0 4.4
 164 10.0 8.0 12.0



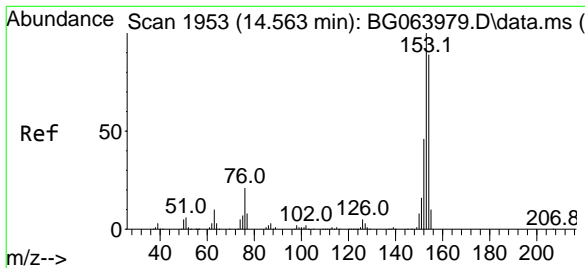
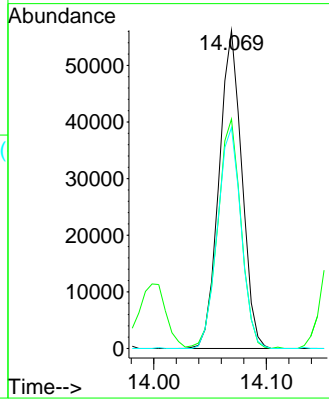
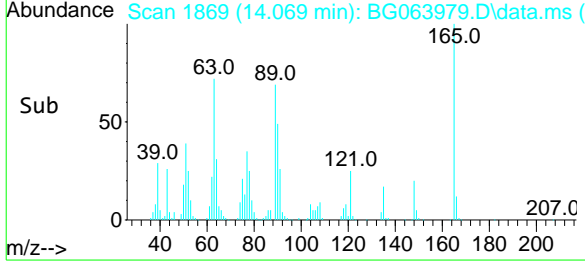


#51
 2,6-Dinitrotoluene
 Concen: 38.638 ng
 RT: 14.069 min Scan# 1869
 Delta R.T. 0.000 min
 Lab File: BG063979.D
 Acq: 3 Feb 2025 13:49

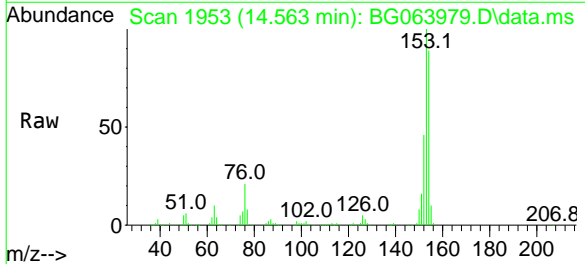
Instrument : BNA_G
 ClientSampleId : SSTDICCC040



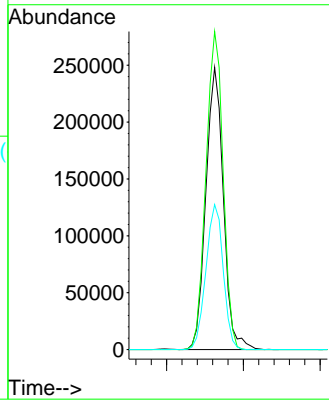
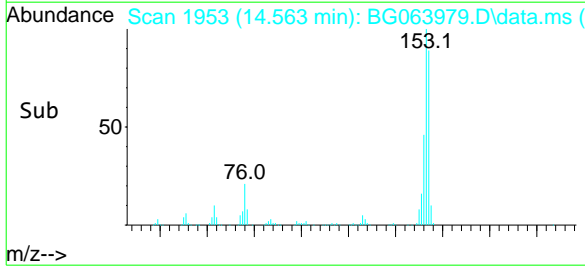
Tgt Ion	Resp	Lower	Upper
165	100		
63	72.1	57.7	86.5
89	69.5	55.6	83.4

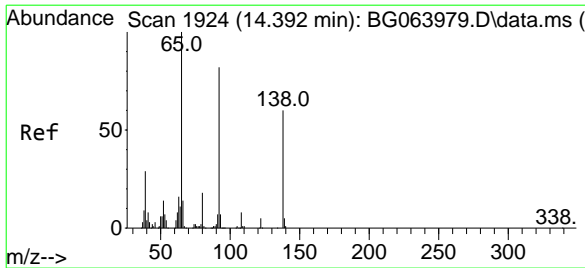


#52
 Acenaphthene
 Concen: 39.670 ng
 RT: 14.563 min Scan# 1953
 Delta R.T. -0.000 min
 Lab File: BG063979.D
 Acq: 3 Feb 2025 13:49



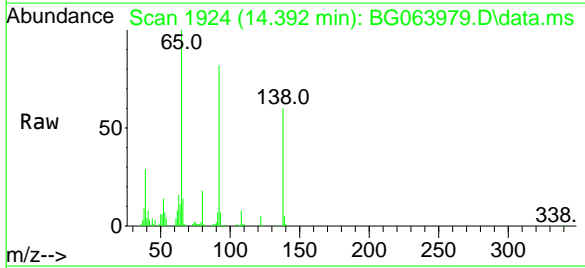
Tgt Ion	Resp	Lower	Upper
154	100		
153	112.7	90.2	135.2
152	51.4	41.1	61.7



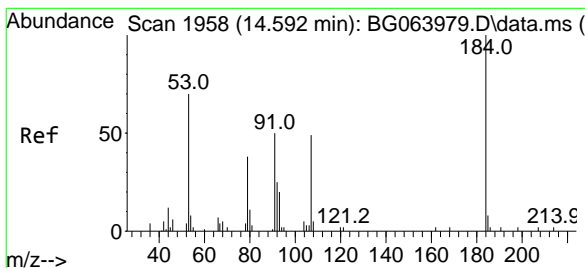
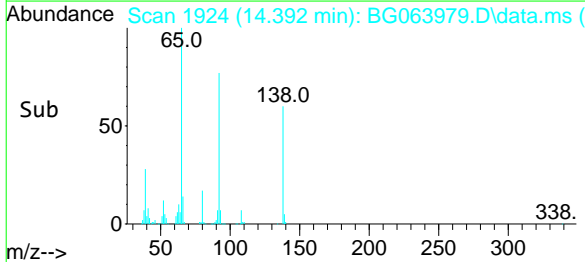
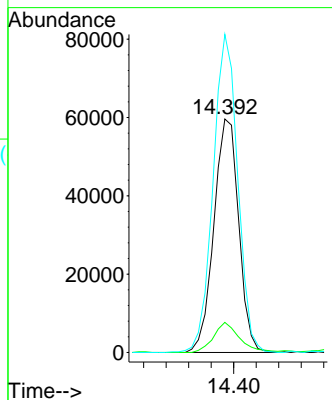


#53
 3-Nitroaniline
 Concen: 37.599 ng
 RT: 14.392 min Scan# 1924
 Delta R.T. 0.000 min
 Lab File: BG063979.D
 Acq: 3 Feb 2025 13:49

Instrument : BNA_G
 ClientSampleId : SSTDICCC040

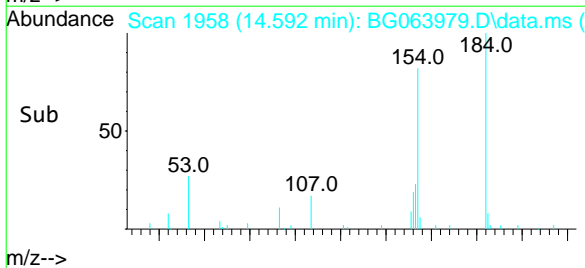
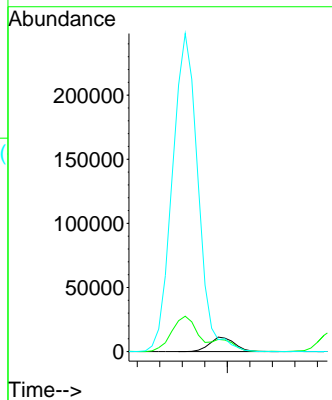
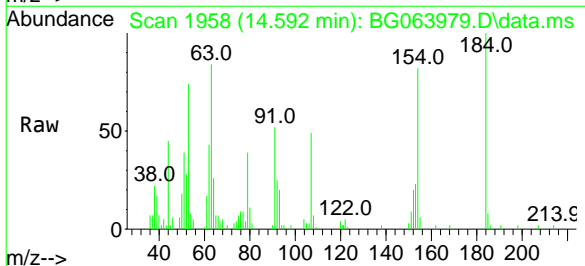


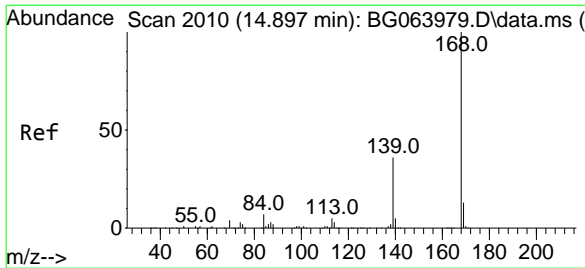
Tgt Ion	Resp	Lower	Upper
138	100		
108	12.9	10.3	15.5
92	136.2	109.0	163.4



#54
 2,4-Dinitrophenol
 Concen: 37.854 ng
 RT: 14.592 min Scan# 1958
 Delta R.T. -0.000 min
 Lab File: BG063979.D
 Acq: 3 Feb 2025 13:49

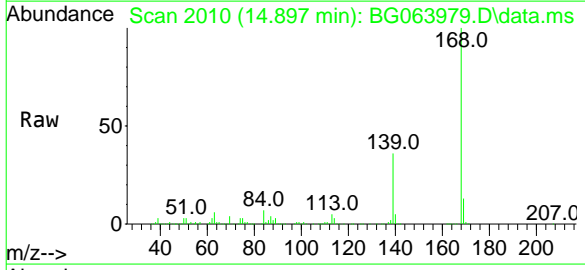
Tgt Ion	Resp	Lower	Upper
184	100		
63	84.1	67.3	100.9
154	82.4	65.9	98.9





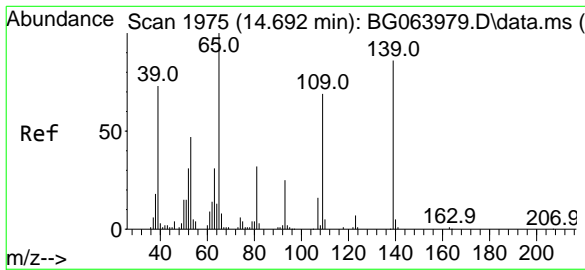
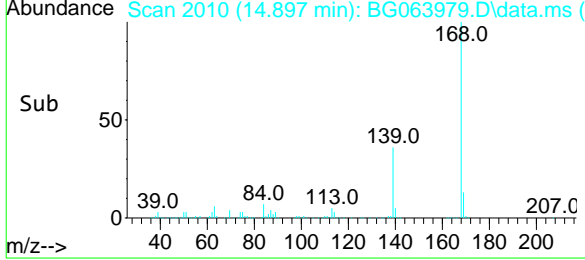
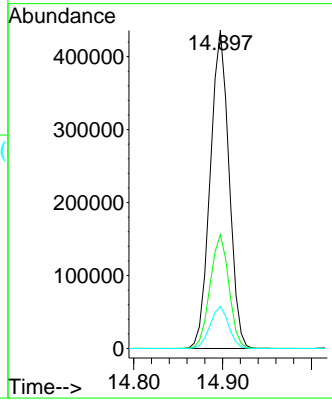
#55
 Dibenzofuran
 Concen: 39.775 ng
 RT: 14.897 min Scan# 2010
 Delta R.T. 0.000 min
 Lab File: BG063979.D
 Acq: 3 Feb 2025 13:49

Instrument :
 BNA_G
 ClientSampleId :
 SSTDICCC040



Tgt Ion:168 Resp: 639708

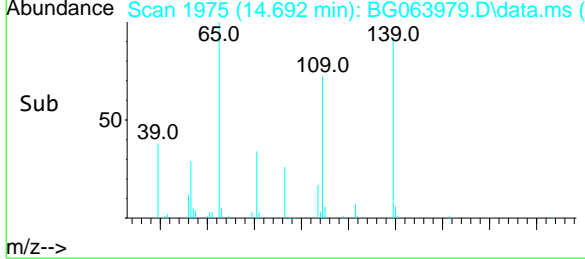
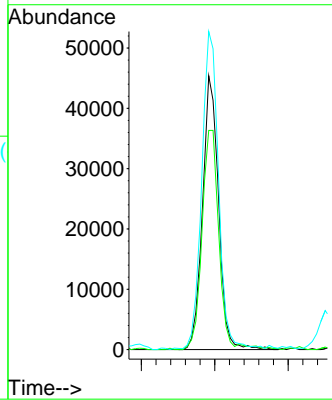
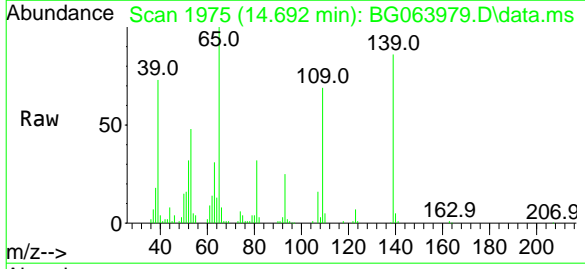
Ion	Ratio	Lower	Upper
168	100		
139	35.8	28.6	43.0
169	13.3	10.6	16.0

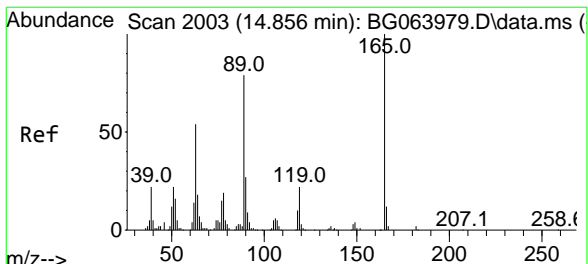


#56
 4-Nitrophenol
 Concen: 36.454 ng
 RT: 14.692 min Scan# 1975
 Delta R.T. -0.000 min
 Lab File: BG063979.D
 Acq: 3 Feb 2025 13:49

Tgt Ion:139 Resp: 68812

Ion	Ratio	Lower	Upper
139	100		
109	80.1	60.1	100.1
65	116.2	96.2	136.2

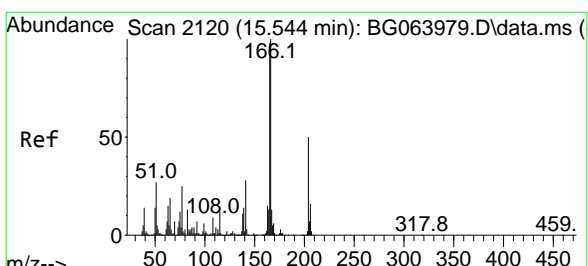
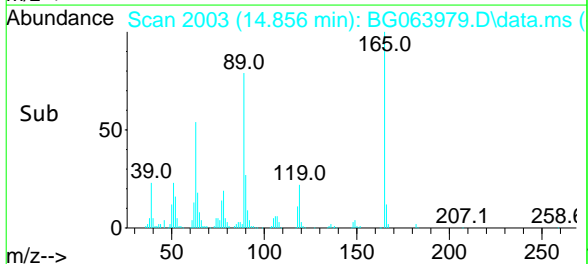
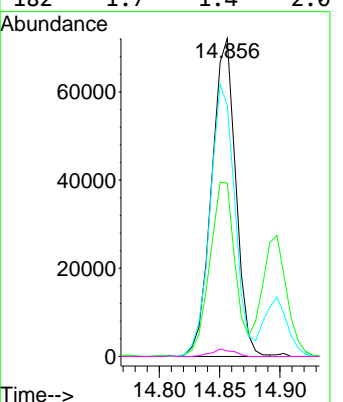
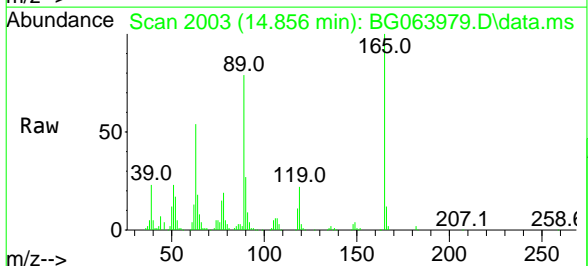




#57
 2,4-Dinitrotoluene
 Concen: 38.133 ng
 RT: 14.856 min Scan# 2003
 Delta R.T. 0.000 min
 Lab File: BG063979.D
 Acq: 3 Feb 2025 13:49

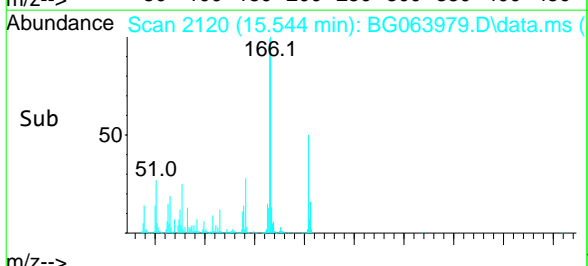
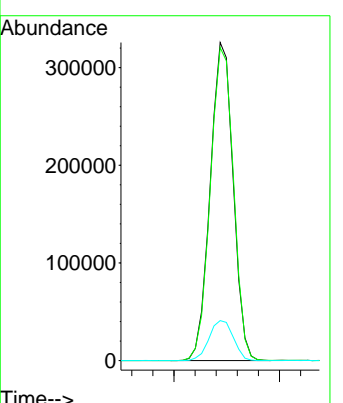
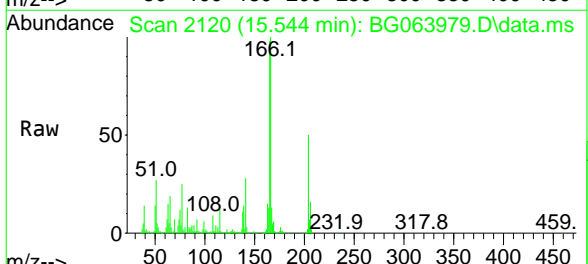
Instrument : BNA_G
 ClientSampleId : SSTDICCC040

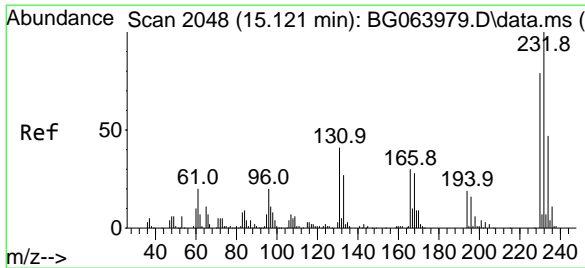
Tgt Ion	Ratio	Lower	Upper
165	100		
63	54.5	43.6	65.4
89	78.9	63.1	94.7
182	1.7	1.4	2.0



#58
 Fluorene
 Concen: 39.612 ng
 RT: 15.544 min Scan# 2120
 Delta R.T. 0.000 min
 Lab File: BG063979.D
 Acq: 3 Feb 2025 13:49

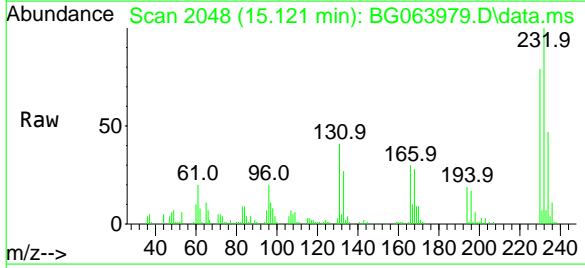
Tgt Ion	Ratio	Lower	Upper
166	100		
165	98.4	78.7	118.1
167	12.6	10.1	15.1



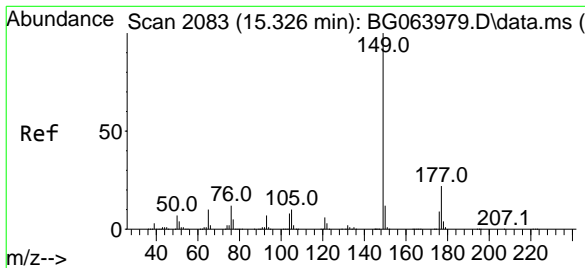
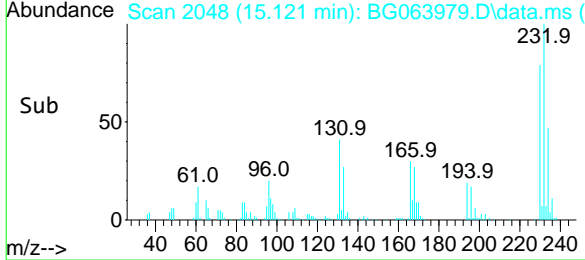
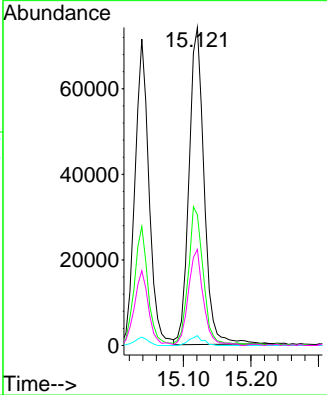


#59
 2,3,4,6-Tetrachlorophenol
 Concen: 37.040 ng
 RT: 15.121 min Scan# 2048
 Delta R.T. -0.000 min
 Lab File: BG063979.D
 Acq: 3 Feb 2025 13:49

Instrument : BNA_G
 ClientSampleId : SSTDICCC040

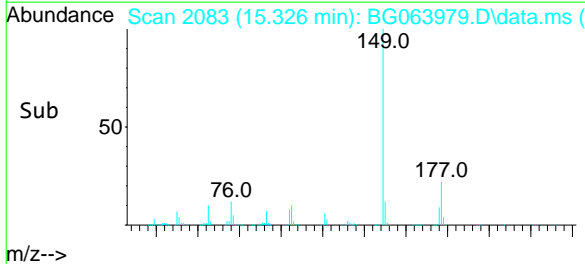
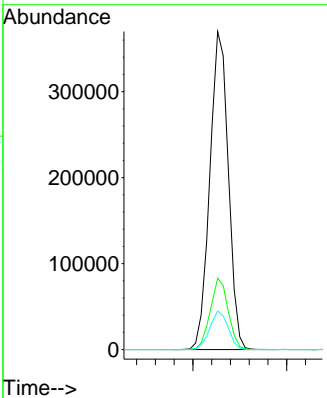
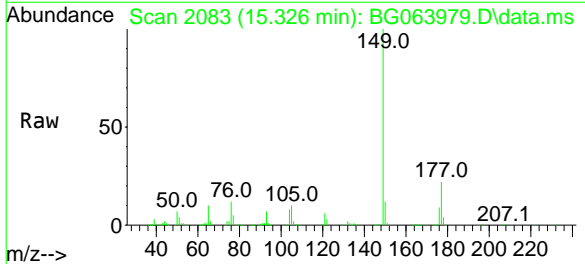


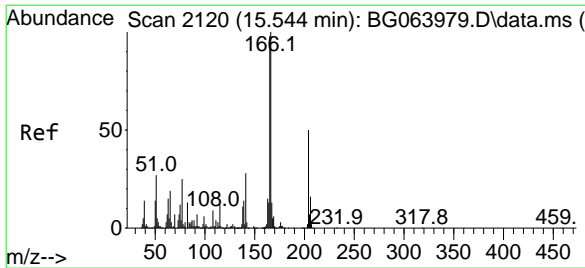
Tgt Ion: 232 Resp: 115130
 Ion Ratio Lower Upper
 232 100
 131 42.5 34.0 51.0
 130 2.8 2.2 3.4
 166 30.1 24.1 36.1



#60
 Diethylphthalate
 Concen: 42.063 ng
 RT: 15.326 min Scan# 2083
 Delta R.T. 0.000 min
 Lab File: BG063979.D
 Acq: 3 Feb 2025 13:49

Tgt Ion: 149 Resp: 506557
 Ion Ratio Lower Upper
 149 100
 177 22.5 18.0 27.0
 150 12.1 9.7 14.5

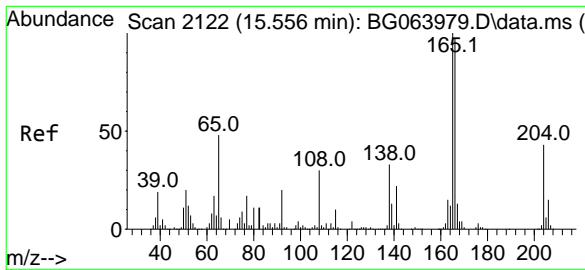
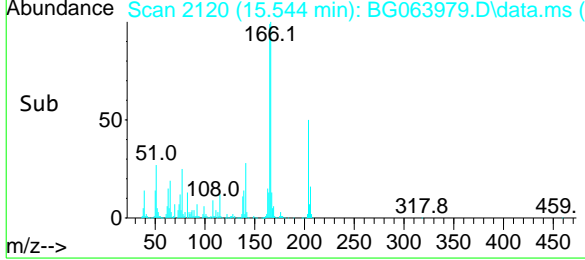
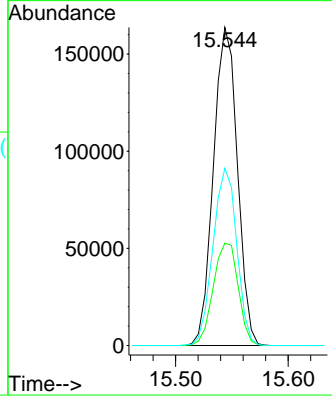
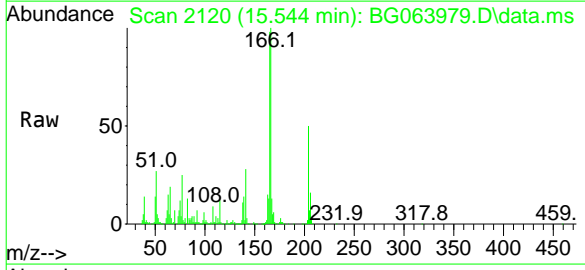




#61
 4-Chlorophenyl-phenylether
 Concen: 38.891 ng
 RT: 15.544 min Scan# 2120
 Delta R.T. 0.000 min
 Lab File: BG063979.D
 Acq: 3 Feb 2025 13:49

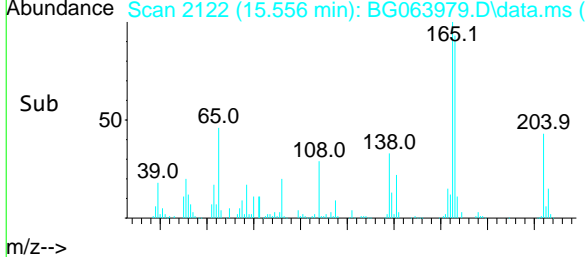
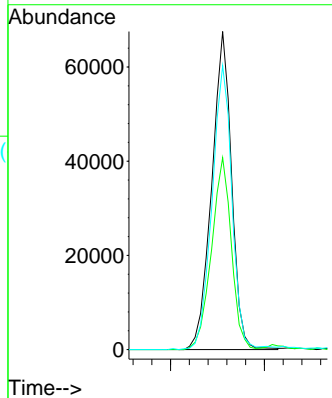
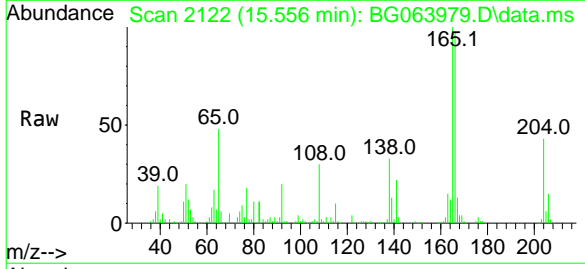
Instrument : BNA_G
 ClientSampleId : SSTDICCC040

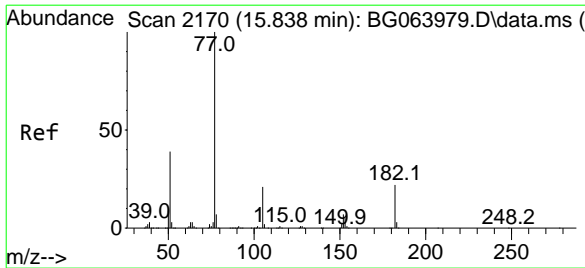
Tgt Ion	Resp	Lower	Upper
204	100		
206	32.2	25.8	38.6
141	55.8	44.6	67.0



#62
 4-Nitroaniline
 Concen: 37.793 ng
 RT: 15.556 min Scan# 2122
 Delta R.T. -0.000 min
 Lab File: BG063979.D
 Acq: 3 Feb 2025 13:49

Tgt Ion	Resp	Lower	Upper
138	100		
92	60.3	40.3	80.3
108	89.3	69.3	109.3

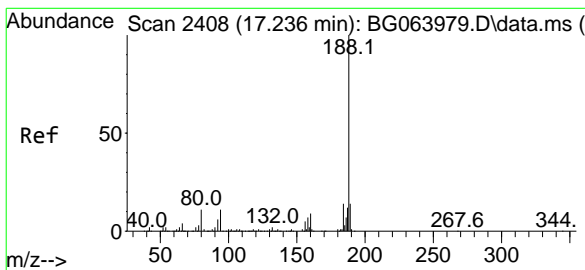
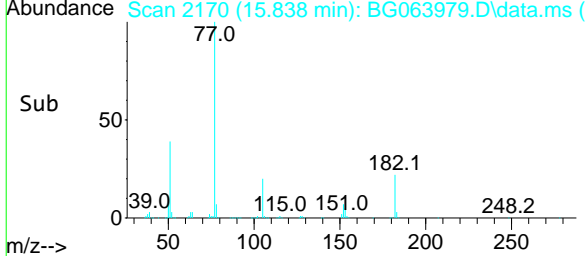
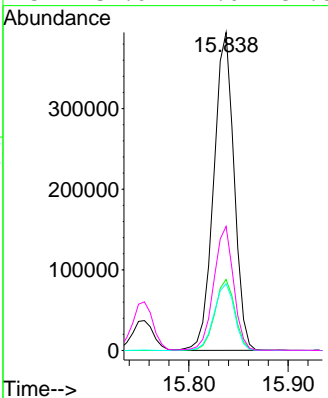
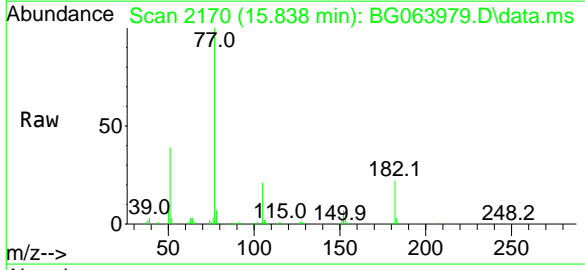




#63
 Azobenzene
 Concen: 39.414 ng
 RT: 15.838 min Scan# 2170
 Delta R.T. 0.000 min
 Lab File: BG063979.D
 Acq: 3 Feb 2025 13:49

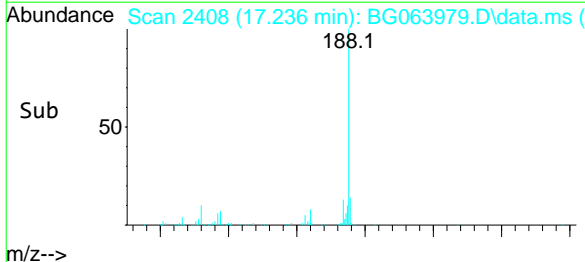
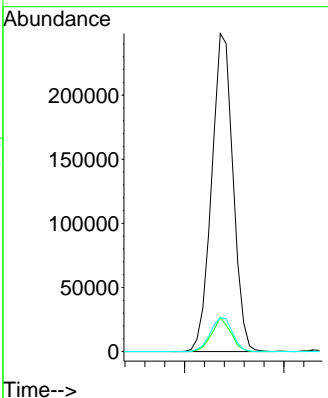
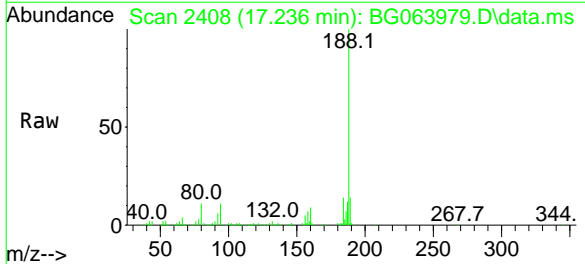
Instrument : BNA_G
 ClientSampleId : SSTDICCC040

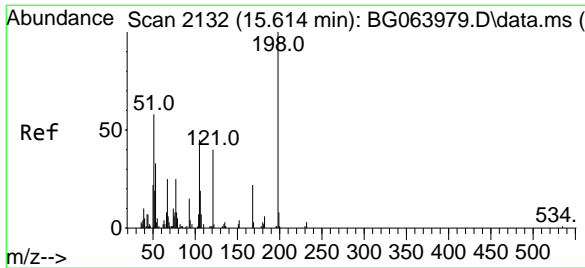
Tgt Ion	Resp	Lower	Upper
77	100		
182	22.3	2.3	42.3
105	21.0	1.0	41.0
51	39.0	19.0	59.0



#64
 Phenanthrene-d10
 Concen: 20.000 ng
 RT: 17.236 min Scan# 2408
 Delta R.T. 0.000 min
 Lab File: BG063979.D
 Acq: 3 Feb 2025 13:49

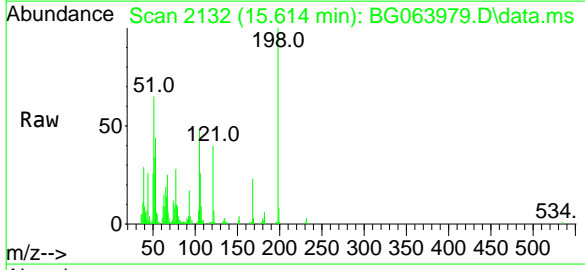
Tgt Ion	Resp	Lower	Upper
188	100		
94	10.8	8.6	13.0
80	10.6	8.5	12.7



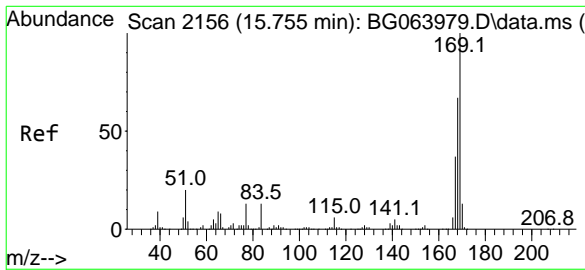
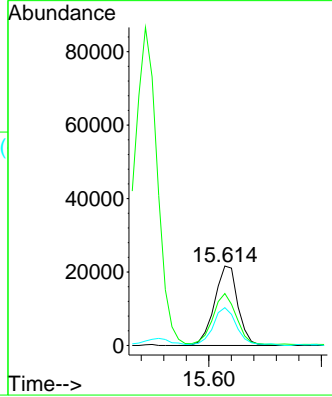
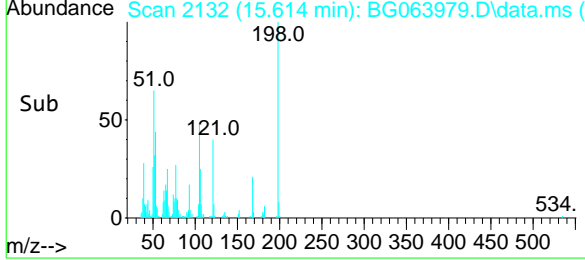


#65
 4,6-Dinitro-2-methylphenol
 Concen: 39.130 ng
 RT: 15.614 min Scan# 2132
 Delta R.T. 0.000 min
 Lab File: BG063979.D
 Acq: 3 Feb 2025 13:49

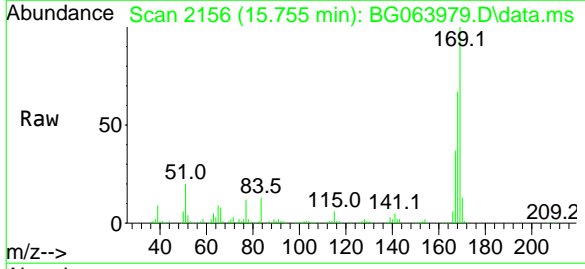
Instrument : BNA_G
 ClientSampleId : SSTDICCC040



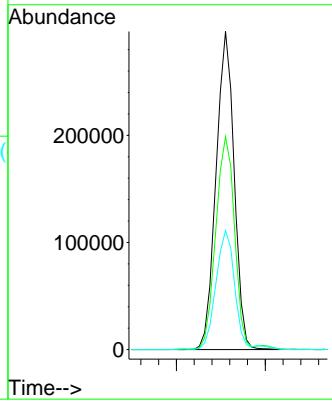
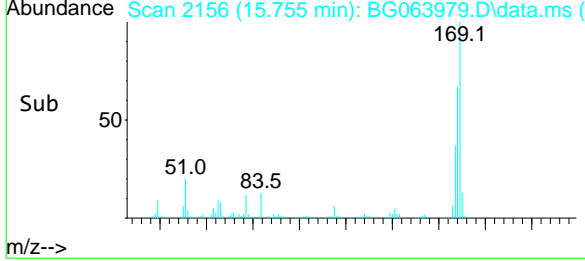
Tgt Ion	Ratio	Lower	Upper
198	100		
51	65.4	45.4	85.4
105	47.7	27.7	67.7

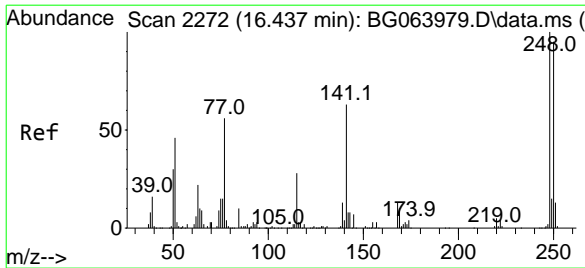


#66
 n-Nitrosodiphenylamine
 Concen: 40.953 ng
 RT: 15.755 min Scan# 2156
 Delta R.T. 0.000 min
 Lab File: BG063979.D
 Acq: 3 Feb 2025 13:49



Tgt Ion	Ratio	Lower	Upper
169	100		
168	66.9	53.5	80.3
167	37.5	30.0	45.0

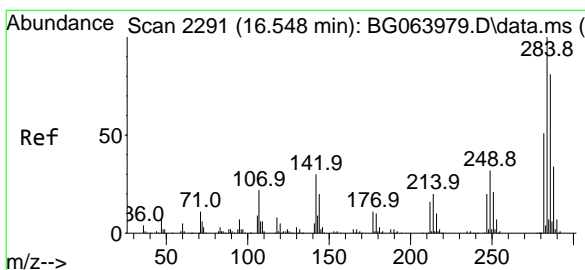
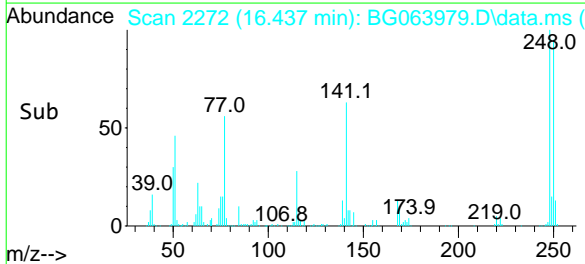
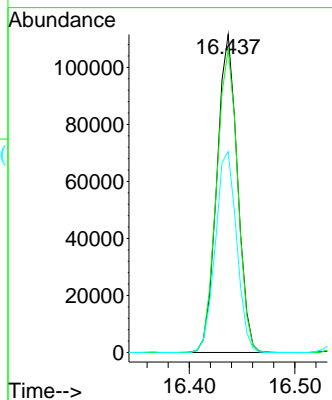
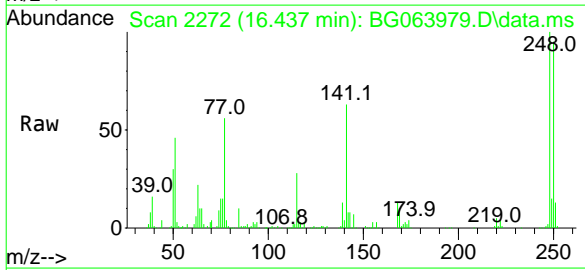




#67
 4-Bromophenyl-phenylether
 Concen: 40.962 ng
 RT: 16.437 min Scan# 2272
 Delta R.T. 0.000 min
 Lab File: BG063979.D
 Acq: 3 Feb 2025 13:49

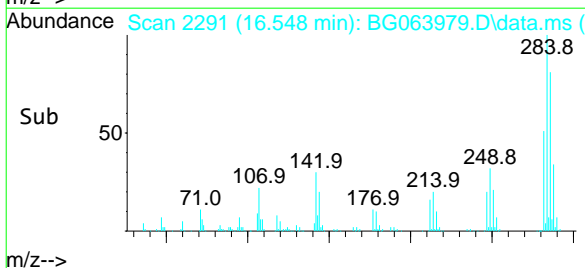
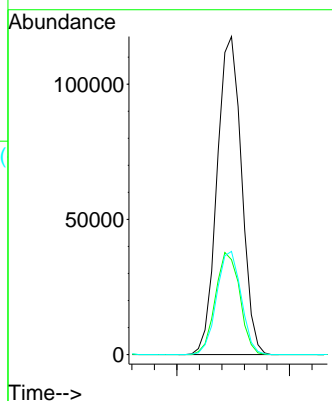
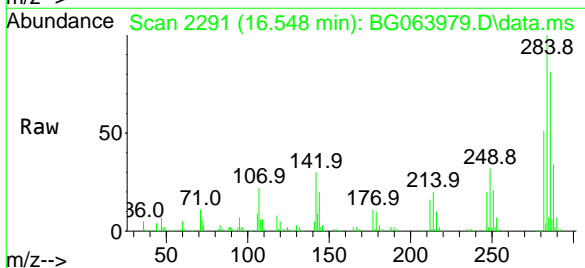
Instrument :
 BNA_G
 ClientSampleId :
 SSTDICCC040

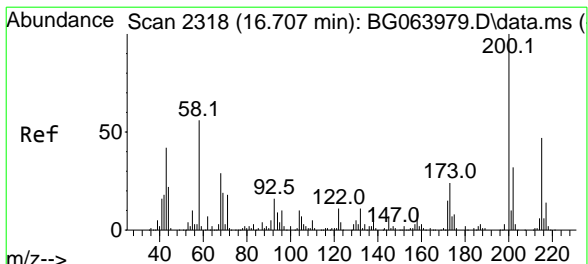
Tgt Ion:248 Resp: 151128
 Ion Ratio Lower Upper
 248 100
 250 95.3 76.2 114.4
 141 63.2 50.6 75.8



#68
 Hexachlorobenzene
 Concen: 40.982 ng
 RT: 16.548 min Scan# 2291
 Delta R.T. 0.000 min
 Lab File: BG063979.D
 Acq: 3 Feb 2025 13:49

Tgt Ion:284 Resp: 177766
 Ion Ratio Lower Upper
 284 100
 142 29.8 23.8 35.8
 249 32.4 25.9 38.9



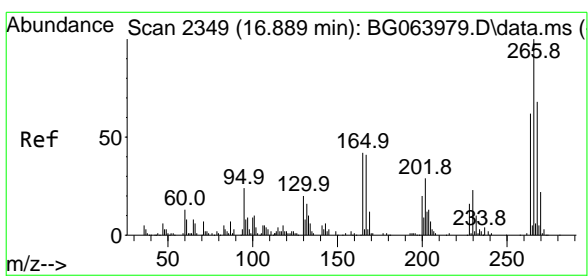
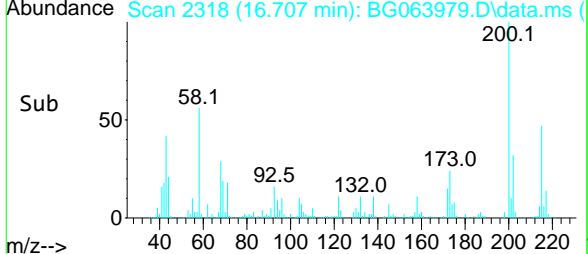
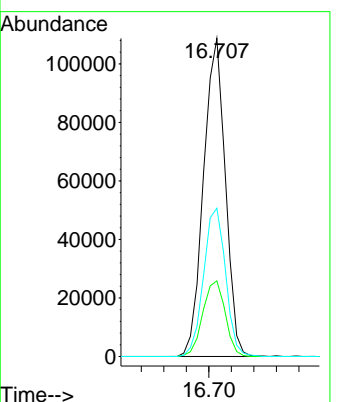
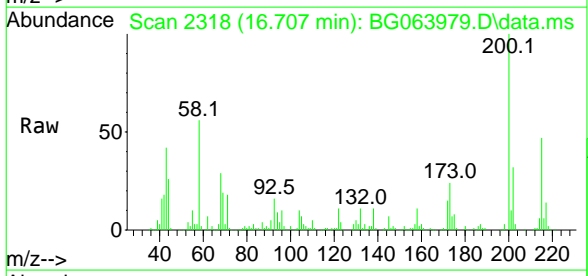


#69
 Atrazine
 Concen: 42.803 ng
 RT: 16.707 min Scan# 2318
 Delta R.T. 0.000 min
 Lab File: BG063979.D
 Acq: 3 Feb 2025 13:49

Instrument : BNA_G
 ClientSampleId : SSTDICCC040

Tgt Ion:200 Resp: 146392

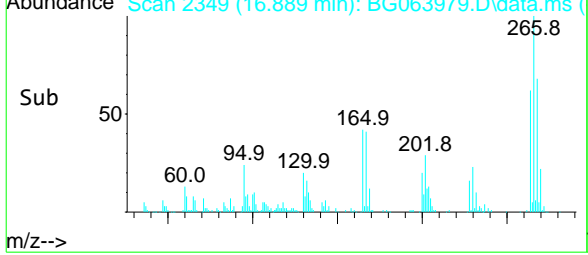
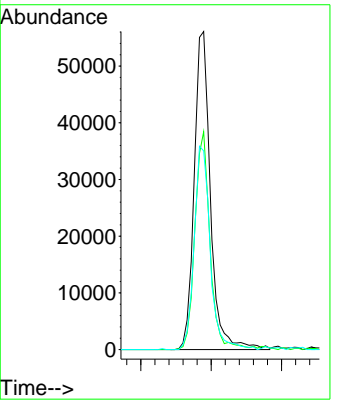
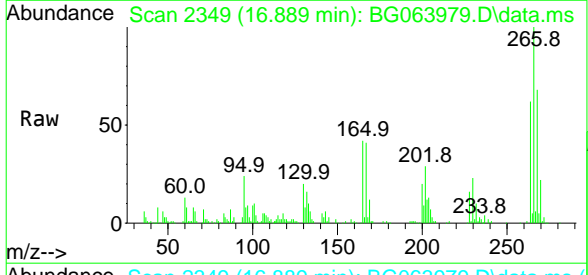
Ion	Ratio	Lower	Upper
200	100		
173	23.8	3.8	43.8
215	46.6	26.6	66.6

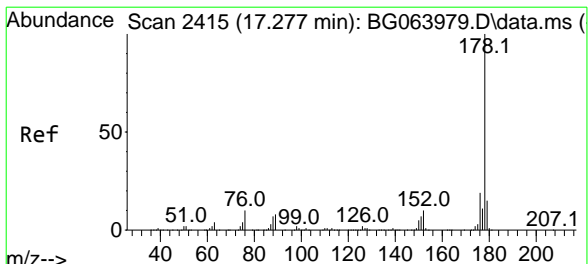


#70
 Pentachlorophenol
 Concen: 37.000 ng
 RT: 16.889 min Scan# 2349
 Delta R.T. 0.000 min
 Lab File: BG063979.D
 Acq: 3 Feb 2025 13:49

Tgt Ion:266 Resp: 90008

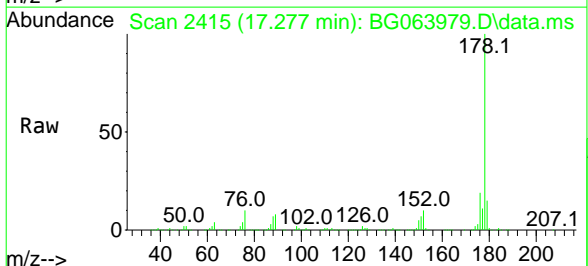
Ion	Ratio	Lower	Upper
266	100		
268	68.5	54.8	82.2
264	62.5	50.0	75.0





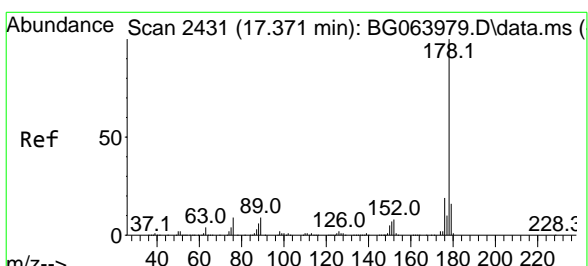
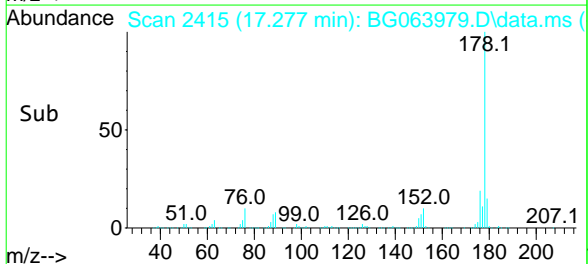
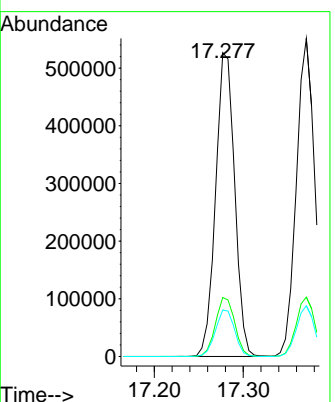
#71
 Phenanthrene
 Concen: 40.325 ng
 RT: 17.277 min Scan# 2415
 Delta R.T. 0.000 min
 Lab File: BG063979.D
 Acq: 3 Feb 2025 13:49

Instrument : BNA_G
 ClientSampleId : SSTDICCC040

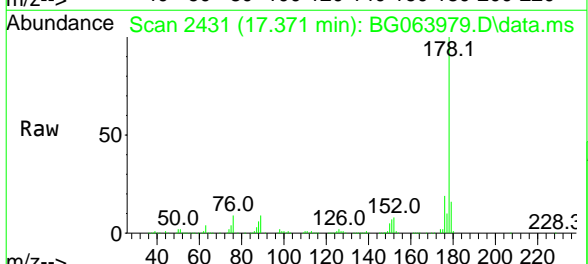


Tgt Ion:178 Resp: 785058

Ion	Ratio	Lower	Upper
178	100		
176	19.4	15.5	23.3
179	15.3	12.2	18.4

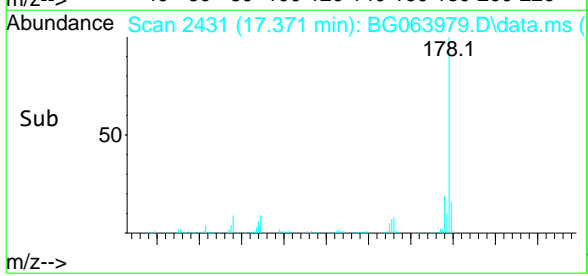
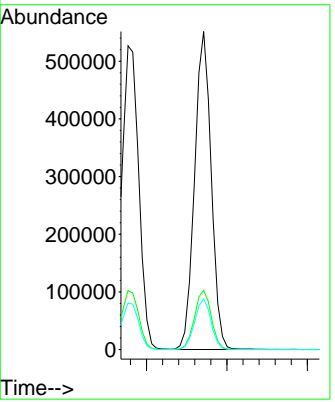


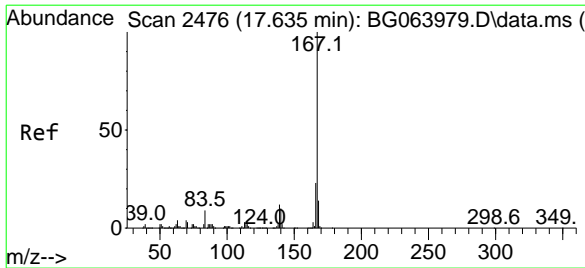
#72
 Anthracene
 Concen: 40.557 ng
 RT: 17.371 min Scan# 2431
 Delta R.T. 0.000 min
 Lab File: BG063979.D
 Acq: 3 Feb 2025 13:49



Tgt Ion:178 Resp: 790085

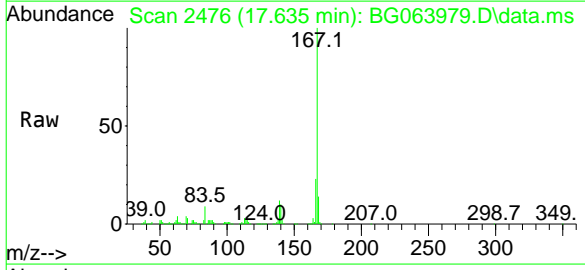
Ion	Ratio	Lower	Upper
178	100		
176	18.7	15.0	22.4
179	16.0	12.8	19.2



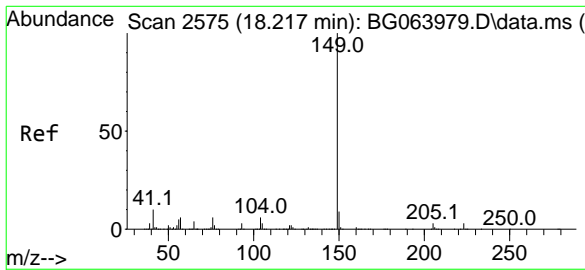
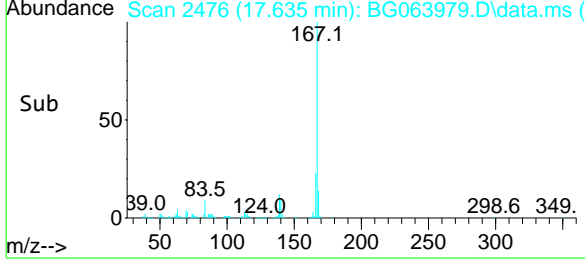
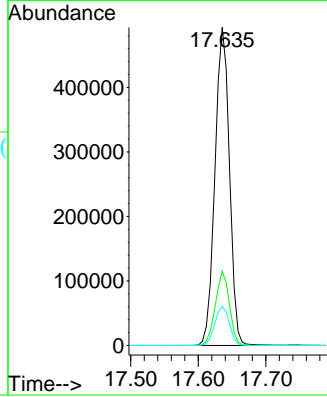


#73
 Carbazole
 Concen: 40.247 ng
 RT: 17.635 min Scan# 24
 Delta R.T. 0.000 min
 Lab File: BG063979.D
 Acq: 3 Feb 2025 13:49

Instrument :
 BNA_G
 ClientSampleId :
 SSTDICCC040

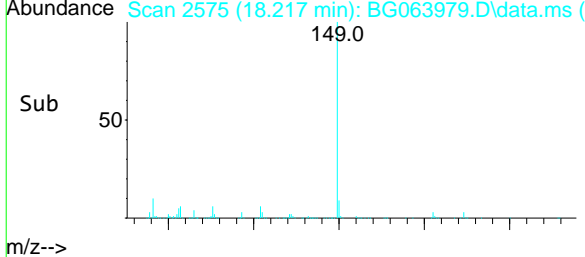
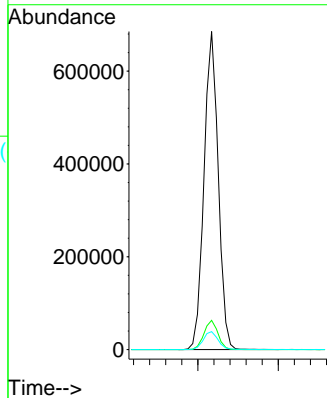
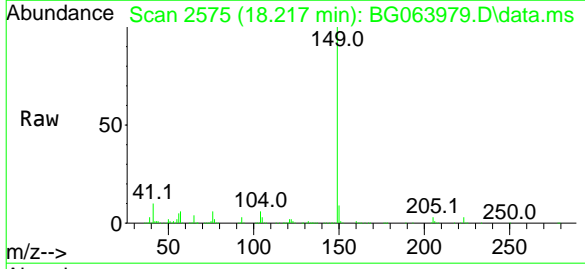


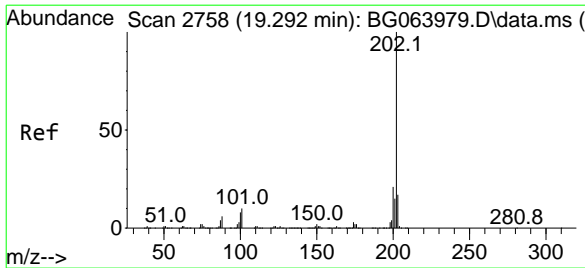
Tgt Ion:167 Resp: 733964
 Ion Ratio Lower Upper
 167 100
 166 23.3 18.6 28.0
 139 12.3 9.8 14.8



#74
 Di-n-butylphthalate
 Concen: 44.212 ng
 RT: 18.217 min Scan# 2575
 Delta R.T. 0.000 min
 Lab File: BG063979.D
 Acq: 3 Feb 2025 13:49

Tgt Ion:149 Resp: 840439
 Ion Ratio Lower Upper
 149 100
 150 9.2 7.4 11.0
 104 5.7 4.6 6.8



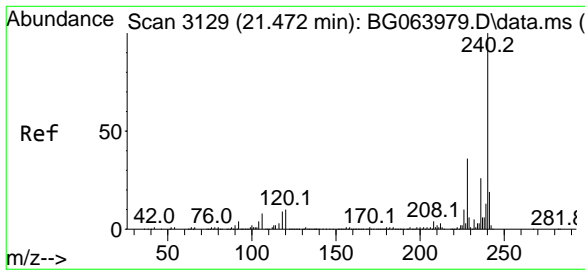
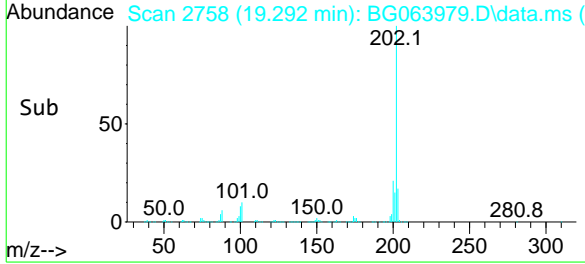
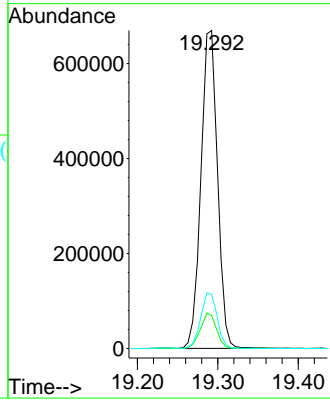
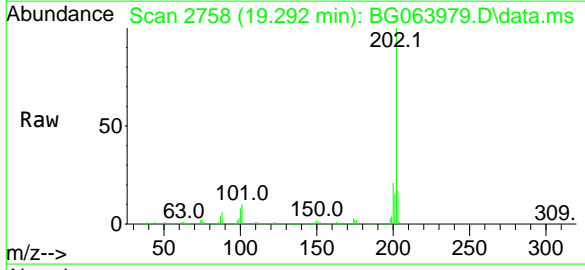


#75
 Fluoranthene
 Concen: 40.430 ng
 RT: 19.292 min Scan# 2758
 Delta R.T. 0.000 min
 Lab File: BG063979.D
 Acq: 3 Feb 2025 13:49

Instrument :
 BNA_G
 ClientSampleId :
 SSTDICCC040

Tgt Ion:202 Resp: 958478

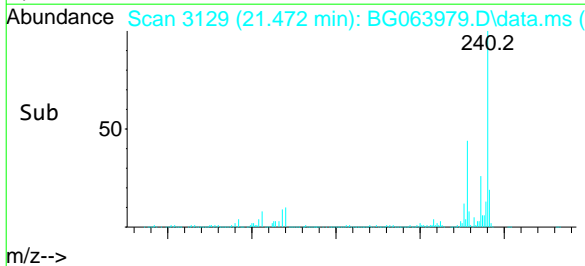
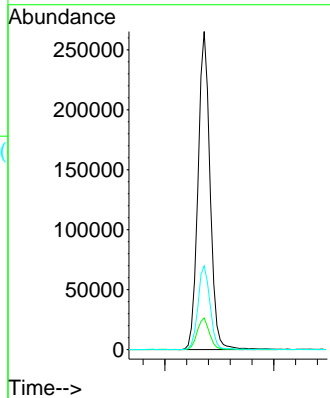
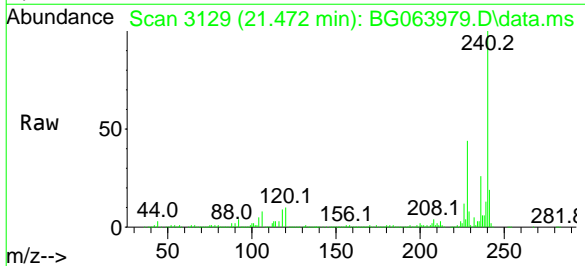
Ion	Ratio	Lower	Upper
202	100		
101	10.4	0.0	30.4
203	17.0	0.0	37.0

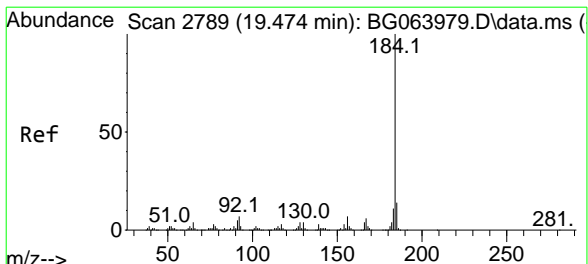


#76
 Chrysene-d12
 Concen: 20.000 ng
 RT: 21.472 min Scan# 3129
 Delta R.T. 0.000 min
 Lab File: BG063979.D
 Acq: 3 Feb 2025 13:49

Tgt Ion:240 Resp: 406429

Ion	Ratio	Lower	Upper
240	100		
120	9.9	7.9	11.9
236	26.3	21.0	31.6



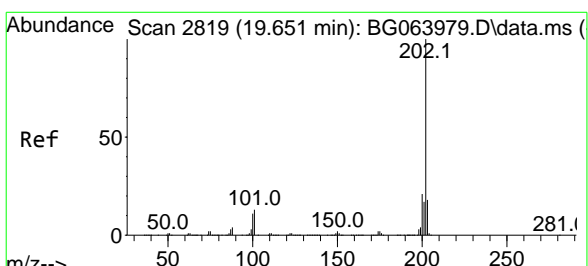
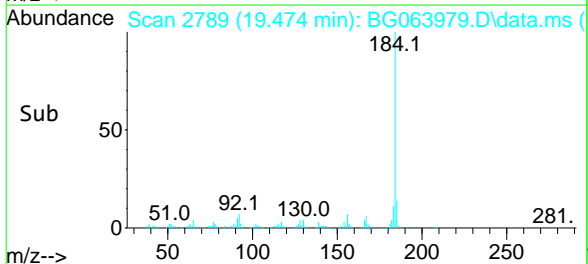
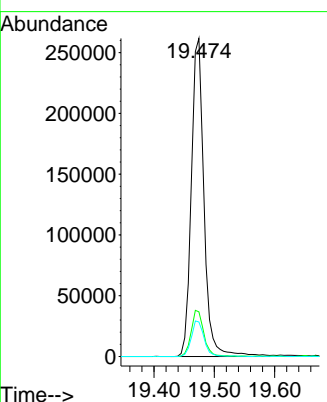
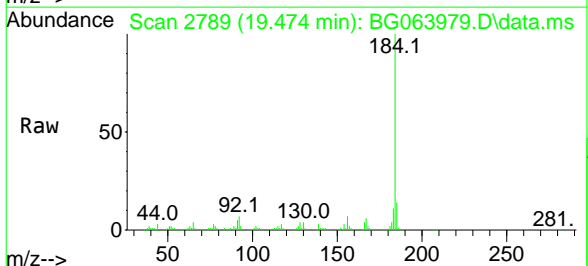


#77
 Benzidine
 Concen: 44.254 ng
 RT: 19.474 min Scan# 2789
 Delta R.T. 0.000 min
 Lab File: BG063979.D
 Acq: 3 Feb 2025 13:49

Instrument : BNA_G
 ClientSampleId : SSTDICCC040

Tgt Ion:184 Resp: 383004

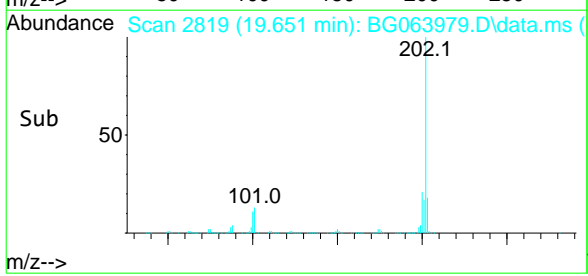
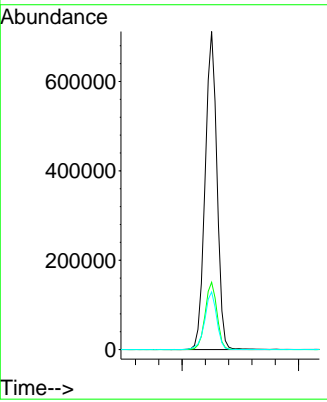
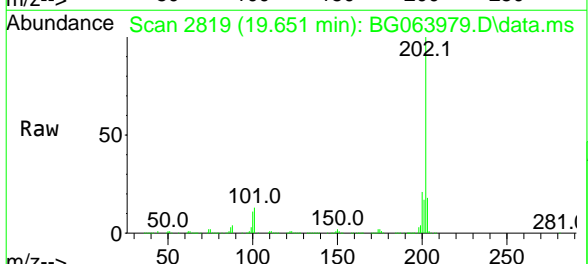
Ion	Ratio	Lower	Upper
184	100		
185	14.0	11.2	16.8
183	10.9	8.7	13.1

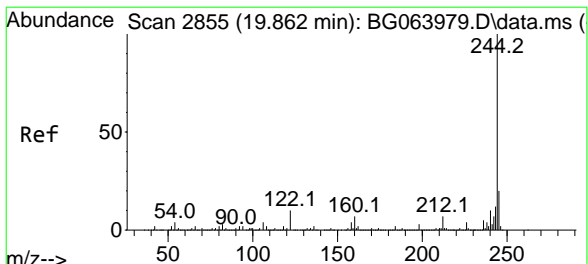


#78
 Pyrene
 Concen: 39.954 ng
 RT: 19.651 min Scan# 2819
 Delta R.T. 0.000 min
 Lab File: BG063979.D
 Acq: 3 Feb 2025 13:49

Tgt Ion:202 Resp: 1002470

Ion	Ratio	Lower	Upper
202	100		
200	21.2	17.0	25.4
203	18.1	14.5	21.7



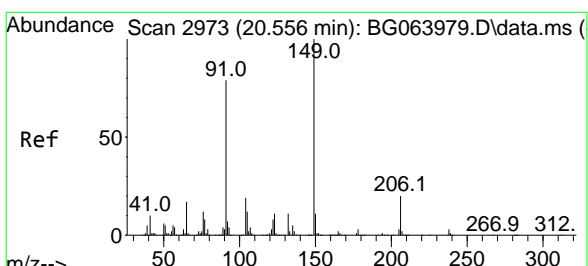
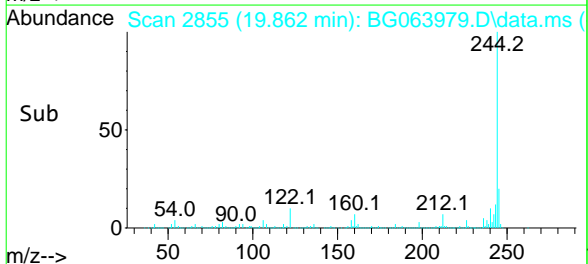
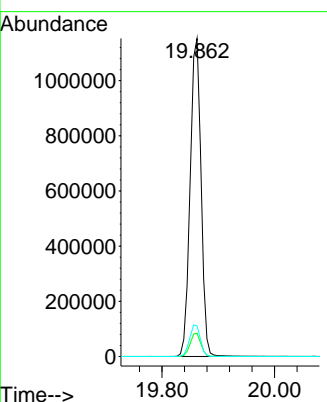
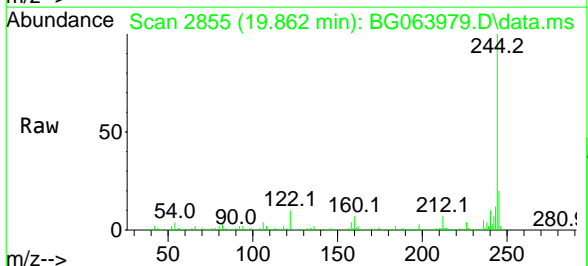


#79
 Terphenyl-d14
 Concen: 79.486 ng
 RT: 19.862 min Scan# 2855
 Delta R.T. 0.000 min
 Lab File: BG063979.D
 Acq: 3 Feb 2025 13:49

Instrument : BNA_G
 ClientSampleId : SSTDICCC040

Tgt Ion: 244 Resp: 1546856

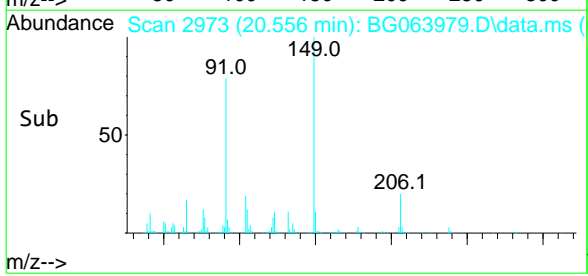
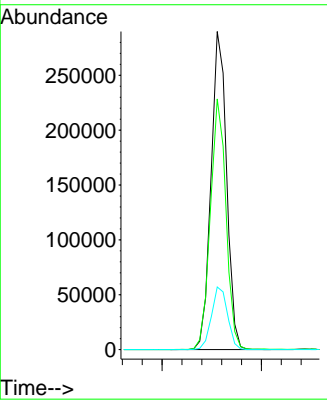
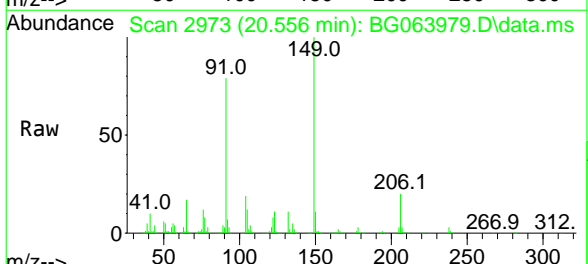
Ion	Ratio	Lower	Upper
244	100		
212	7.3	5.8	8.8
122	9.6	7.7	11.5

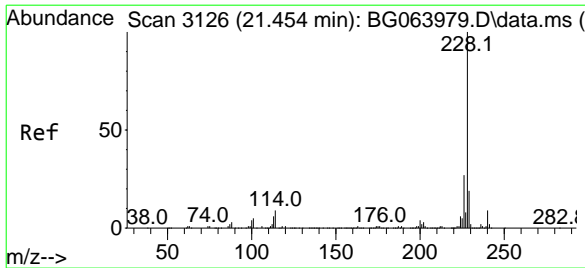


#80
 Butylbenzylphthalate
 Concen: 37.357 ng
 RT: 20.556 min Scan# 2973
 Delta R.T. -0.000 min
 Lab File: BG063979.D
 Acq: 3 Feb 2025 13:49

Tgt Ion: 149 Resp: 315091

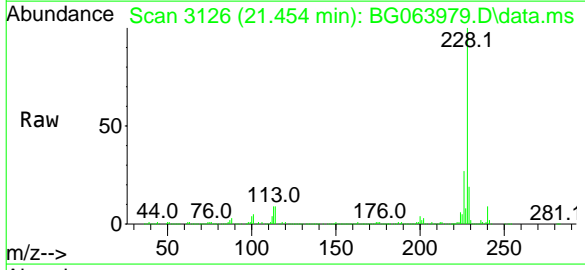
Ion	Ratio	Lower	Upper
149	100		
91	78.8	63.0	94.6
206	19.7	15.8	23.6



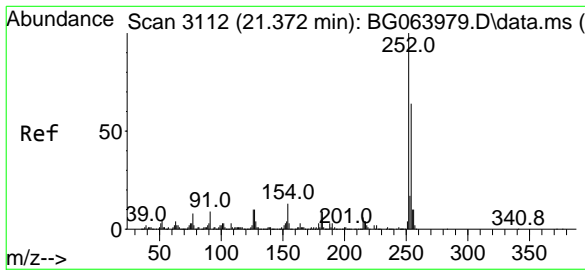
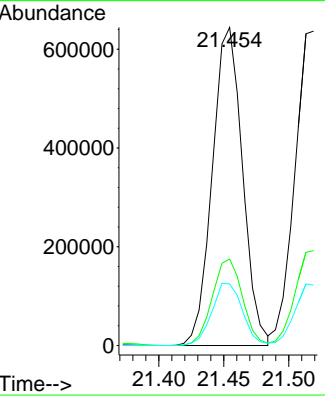
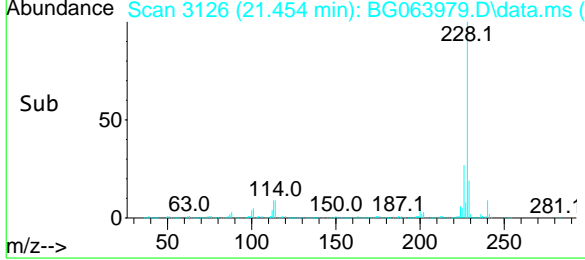


#81
 Benzo(a)anthracene
 Concen: 40.331 ng
 RT: 21.454 min Scan# 3112
 Delta R.T. 0.000 min
 Lab File: BG063979.D
 Acq: 3 Feb 2025 13:49

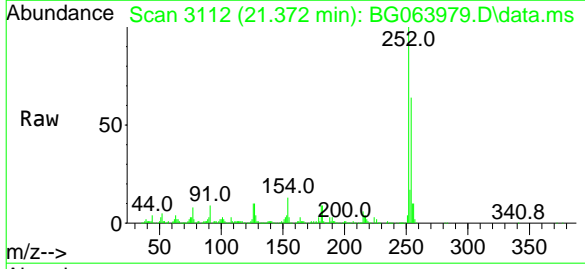
Instrument :
 BNA_G
 ClientSampleId :
 SSTDICCC040



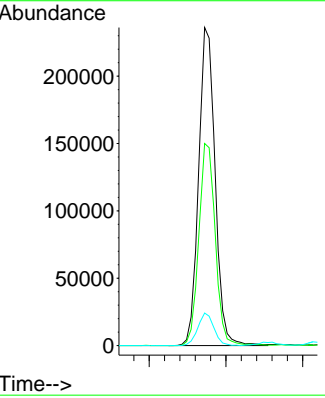
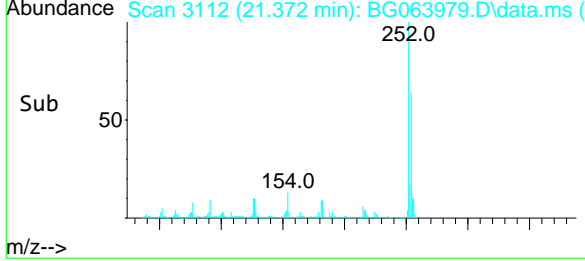
Tgt Ion:228 Resp: 1040731
 Ion Ratio Lower Upper
 228 100
 226 27.2 21.8 32.6
 229 19.4 15.5 23.3

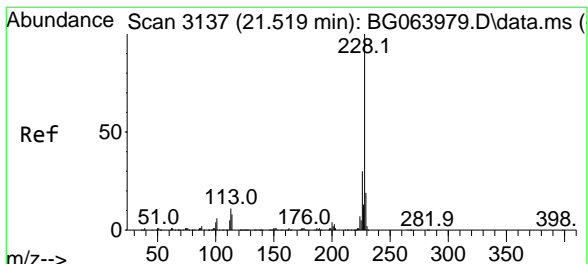


#82
 3,3'-Dichlorobenzidine
 Concen: 43.893 ng
 RT: 21.372 min Scan# 3112
 Delta R.T. 0.000 min
 Lab File: BG063979.D
 Acq: 3 Feb 2025 13:49



Tgt Ion:252 Resp: 352733
 Ion Ratio Lower Upper
 252 100
 254 63.5 50.8 76.2
 126 10.2 8.2 12.2



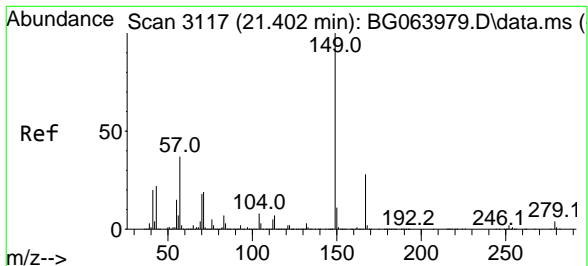
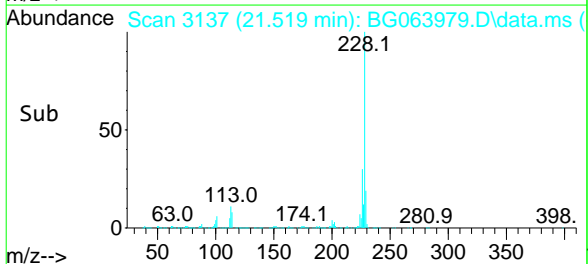
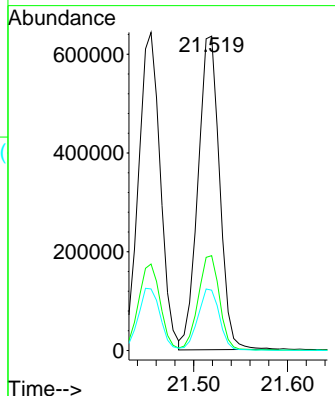
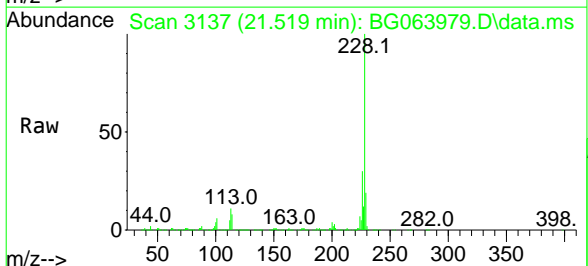


#83
 Chrysene
 Concen: 39.507 ng
 RT: 21.519 min Scan# 3117
 Delta R.T. 0.000 min
 Lab File: BG063979.D
 Acq: 3 Feb 2025 13:49

Instrument : BNA_G
 ClientSampleId : SSTDICCC040

Tgt Ion:228 Resp: 1014525

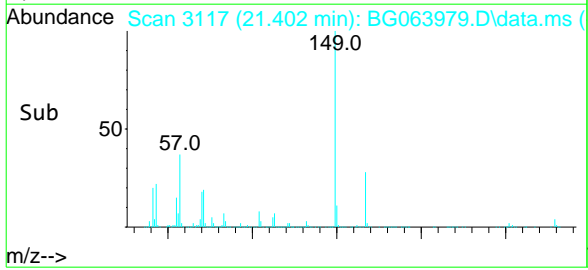
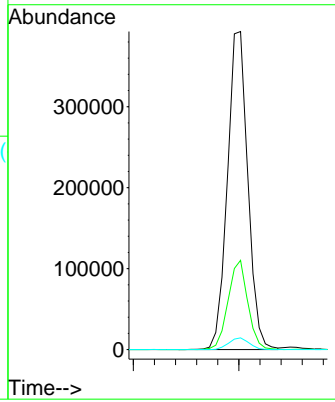
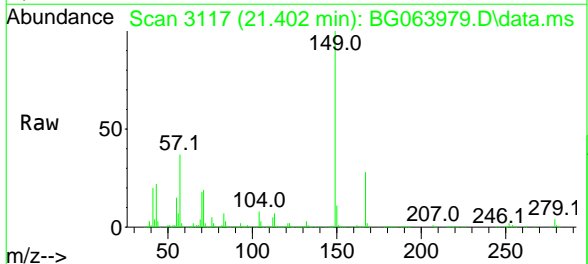
Ion	Ratio	Lower	Upper
228	100		
226	30.2	24.2	36.2
229	19.2	15.4	23.0

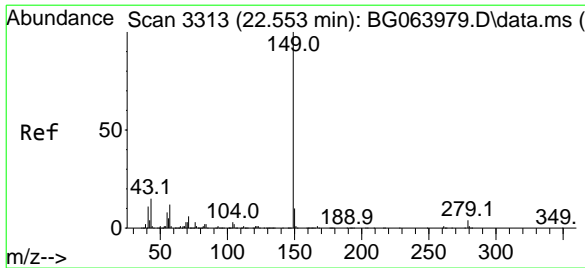


#84
 Bis(2-ethylhexyl)phthalate
 Concen: 38.571 ng
 RT: 21.402 min Scan# 3117
 Delta R.T. -0.000 min
 Lab File: BG063979.D
 Acq: 3 Feb 2025 13:49

Tgt Ion:149 Resp: 528301

Ion	Ratio	Lower	Upper
149	100		
167	28.1	22.5	33.7
279	3.7	3.0	4.4



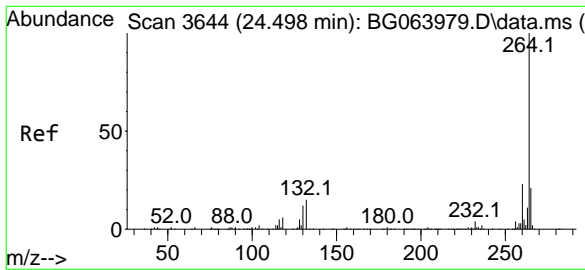
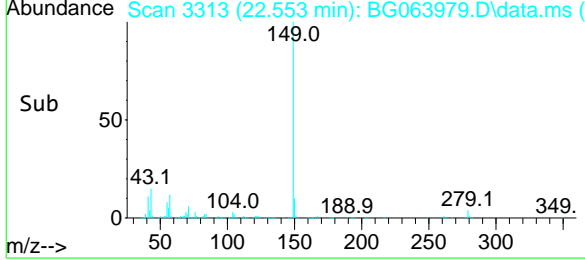
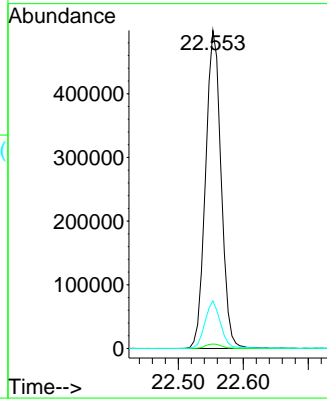
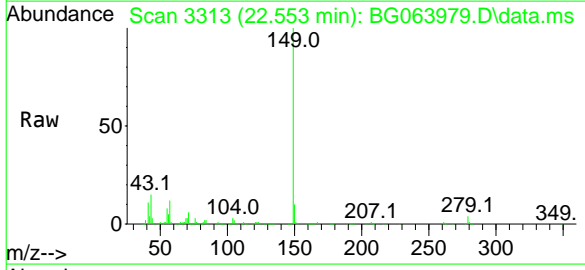


#85
 Di-n-octyl phthalate
 Concen: 37.813 ng
 RT: 22.553 min Scan# 3313
 Delta R.T. 0.000 min
 Lab File: BG063979.D
 Acq: 3 Feb 2025 13:49

Instrument :
 BNA_G
 ClientSampleId :
 SSTDICCC040

Tgt Ion:149 Resp: 829893

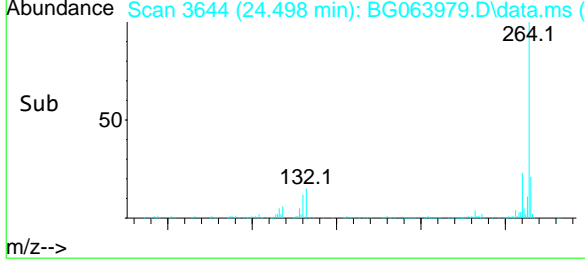
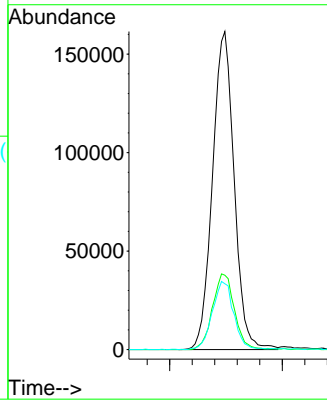
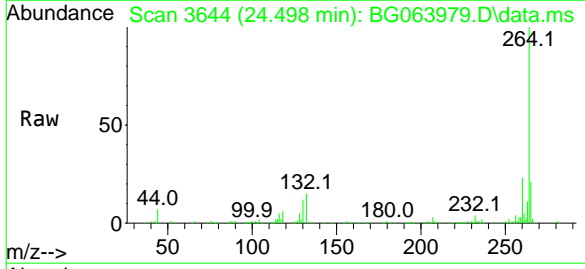
Ion	Ratio	Lower	Upper
149	100		
167	1.5	1.2	1.8
43	15.4	12.3	18.5

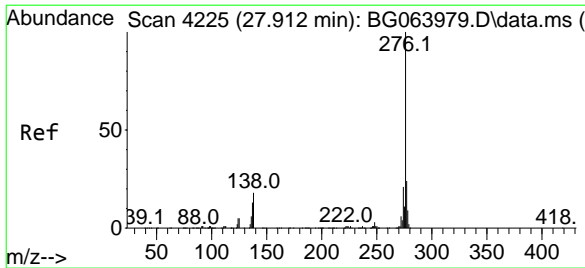


#86
 Perylene-d12
 Concen: 20.000 ng
 RT: 24.498 min Scan# 3644
 Delta R.T. 0.000 min
 Lab File: BG063979.D
 Acq: 3 Feb 2025 13:49

Tgt Ion:264 Resp: 431314

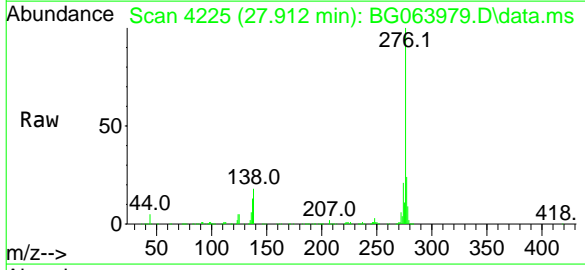
Ion	Ratio	Lower	Upper
264	100		
260	23.4	18.7	28.1
265	20.7	16.6	24.8



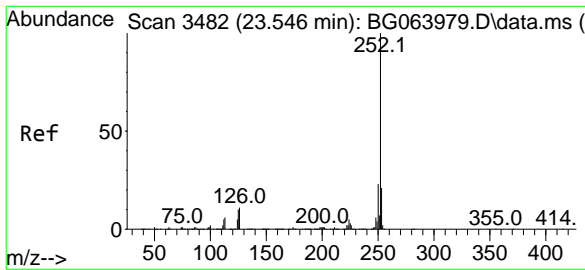
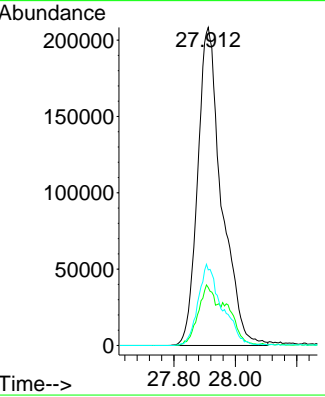
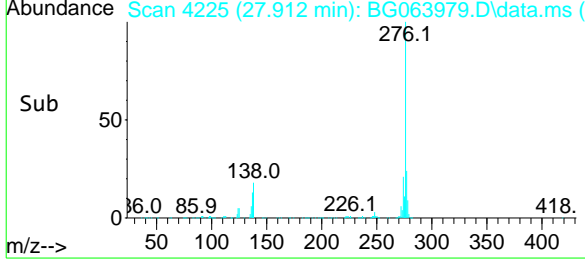


#87
 Indeno(1,2,3-cd)pyrene
 Concen: 40.525 ng
 RT: 27.912 min Scan# 42
 Delta R.T. 0.000 min
 Lab File: BG063979.D
 Acq: 3 Feb 2025 13:49

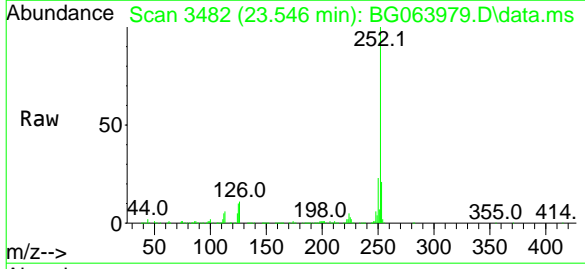
Instrument :
 BNA_G
 ClientSampleId :
 SSTDICCC040



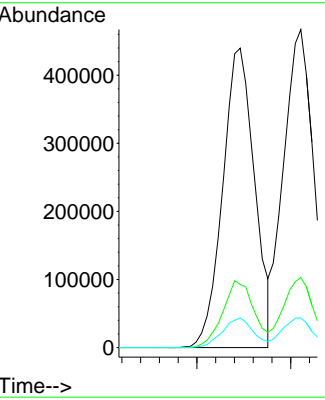
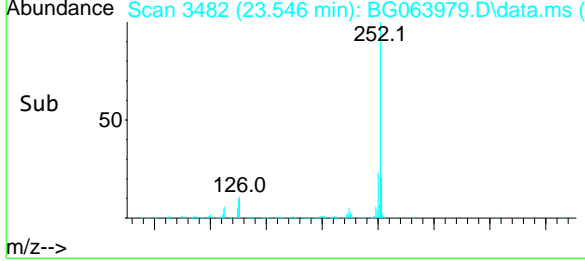
Tgt Ion:276 Resp: 1127623
 Ion Ratio Lower Upper
 276 100
 138 13.4 10.7 16.1
 277 25.3 20.2 30.4

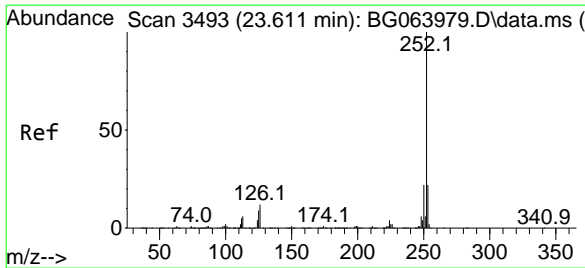


#88
 Benzo(b)fluoranthene
 Concen: 40.823 ng
 RT: 23.546 min Scan# 3482
 Delta R.T. 0.000 min
 Lab File: BG063979.D
 Acq: 3 Feb 2025 13:49



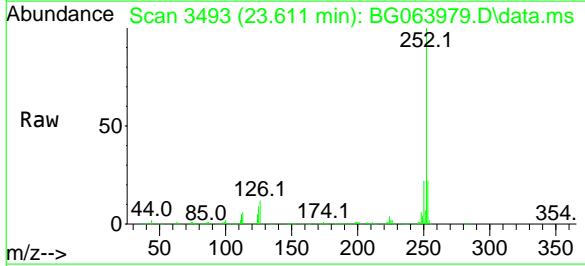
Tgt Ion:252 Resp: 1036813
 Ion Ratio Lower Upper
 252 100
 253 21.1 16.9 25.3
 125 9.9 7.9 11.9



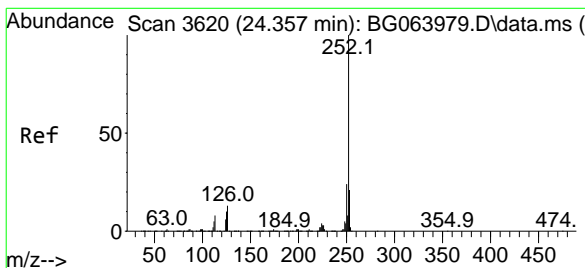
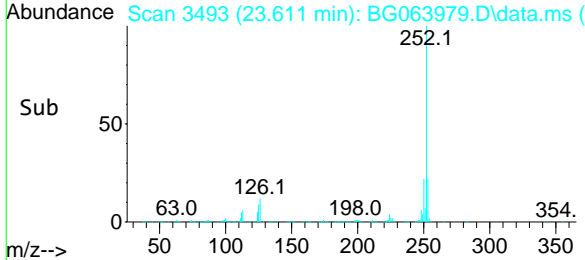
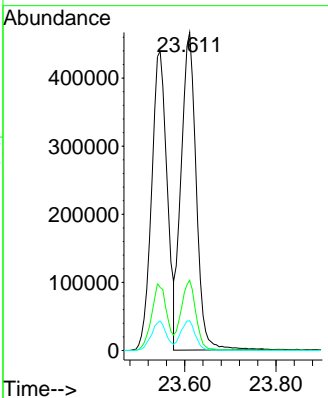


#89
 Benzo(k)fluoranthene
 Concen: 41.029 ng
 RT: 23.611 min Scan# 34
 Delta R.T. 0.000 min
 Lab File: BG063979.D
 Acq: 3 Feb 2025 13:49

Instrument :
 BNA_G
 ClientSampleId :
 SSTDICCC040

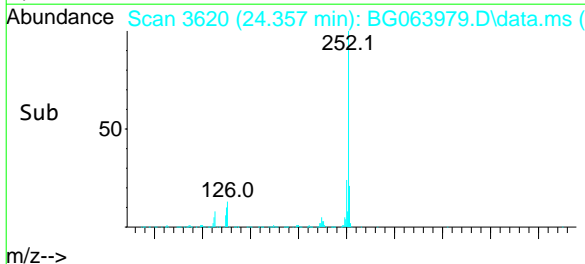
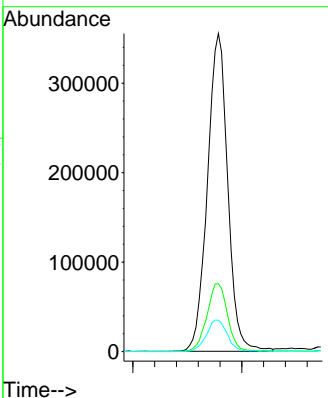
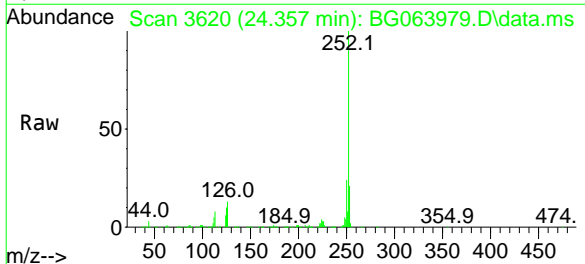


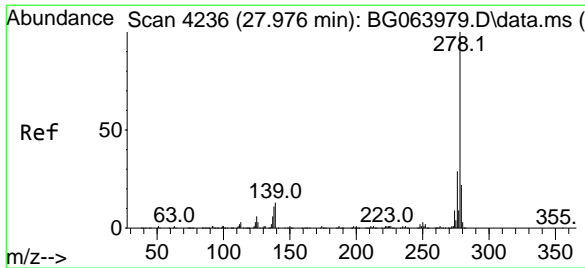
Tgt Ion:252 Resp: 1069986
 Ion Ratio Lower Upper
 252 100
 253 22.1 17.7 26.5
 125 9.4 7.5 11.3



#90
 Benzo(a)pyrene
 Concen: 40.533 ng
 RT: 24.357 min Scan# 3620
 Delta R.T. 0.000 min
 Lab File: BG063979.D
 Acq: 3 Feb 2025 13:49

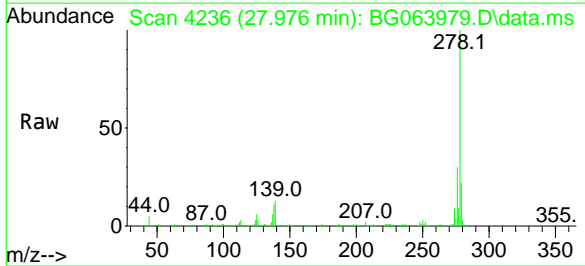
Tgt Ion:252 Resp: 918885
 Ion Ratio Lower Upper
 252 100
 253 21.4 17.1 25.7
 125 9.9 7.9 11.9





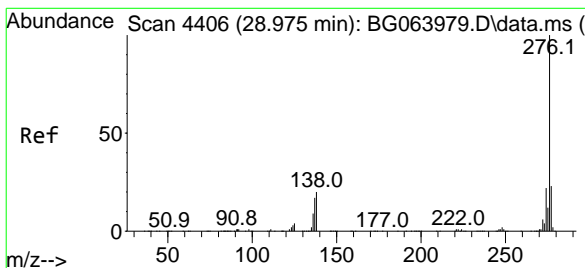
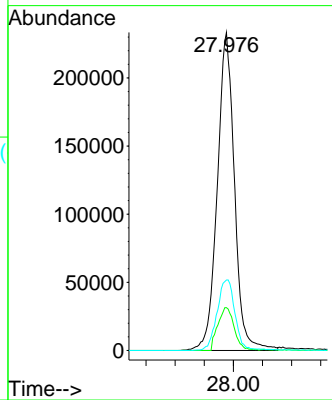
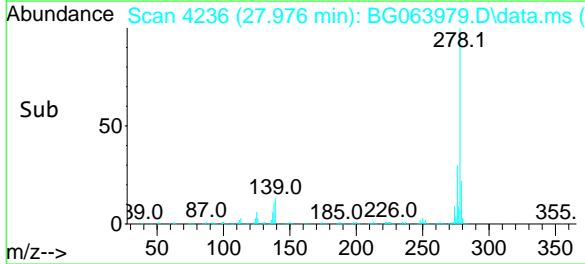
#91
 Dibenzo(a,h)anthracene
 Concen: 40.713 ng
 RT: 27.976 min Scan# 4236
 Delta R.T. 0.000 min
 Lab File: BG063979.D
 Acq: 3 Feb 2025 13:49

Instrument :
 BNA_G
 ClientSampleId :
 SSTDICCC040

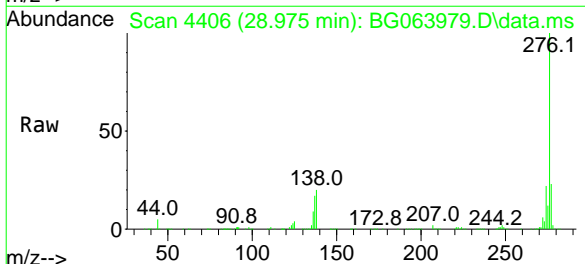


Tgt Ion:278 Resp: 956574

Ion	Ratio	Lower	Upper
278	100		
139	13.5	10.8	16.2
279	22.2	17.8	26.6



#92
 Benzo(g,h,i)perylene
 Concen: 40.388 ng
 RT: 28.975 min Scan# 4406
 Delta R.T. 0.000 min
 Lab File: BG063979.D
 Acq: 3 Feb 2025 13:49



Tgt Ion:276 Resp: 957984

Ion	Ratio	Lower	Upper
276	100		
277	22.8	18.2	27.4
138	19.7	15.8	23.6

