

Data Path : Z:\svoasrv\HPCHEM1\BNA_F\Data\BF013025\
 Data File : BF141301.D
 Acq On : 30 Jan 2025 08:54
 Operator : RC/JU
 Sample : SSTDCCC040
 Misc :
 ALS Vial : 2 Sample Multiplier: 1

Instrument :
 BNA_F
 ClientSampleId :
 SSTDCCC040

Quant Time: Jan 30 10:12:25 2025
 Quant Method : Z:\svoasrv\HPCHEM1\BNA_F\Methods\8270-BF012925.M
 Quant Title : ASP BNA STANDARDS FOR 5 POINT CALIBRATION
 QLast Update : Wed Jan 29 17:41:25 2025
 Response via : Initial Calibration

Compound	R.T.	QIon	Response	Conc	Units	Dev(Min)
Internal Standards						
1) 1,4-Dichlorobenzene-d4	6.798	152	146467	20.000	ng	0.00
21) Naphthalene-d8	8.081	136	575983	20.000	ng	0.00
39) Acenaphthene-d10	9.839	164	308835	20.000	ng	0.00
64) Phenanthrene-d10	11.322	188	511005	20.000	ng	0.00
76) Chrysene-d12	13.969	240	290304	20.000	ng	0.00
86) Perylene-d12	15.421	264	298783	20.000	ng	-0.02
System Monitoring Compounds						
5) 2-Fluorophenol	5.404	112	699692	73.339	ng	0.00
7) Phenol-d6	6.428	99	905142	74.578	ng	-0.01
23) Nitrobenzene-d5	7.363	82	819573	75.011	ng	0.00
42) 2,4,6-Tribromophenol	10.628	330	214625	75.804	ng	0.00
45) 2-Fluorobiphenyl	9.157	172	1439957	71.765	ng	0.00
79) Terphenyl-d14	12.910	244	1375587	73.075	ng	0.00
Target Compounds						
2) 1,4-Dioxane	2.487	88	158660	37.813	ng	100
3) Pyridine	3.216	79	391062	38.682	ng	99
4) n-Nitrosodimethylamine	3.169	42	220937	38.256	ng	99
6) Aniline	6.463	93	407872	39.701	ng	99
8) 2-Chlorophenol	6.581	128	385660	37.714	ng	99
9) Benzaldehyde	6.345	77	249683	35.516	ng	98
10) Phenol	6.440	94	485474	37.734	ng	99
11) bis(2-Chloroethyl)ether	6.534	93	363969	36.896	ng	100
12) 1,3-Dichlorobenzene	6.740	146	419797	37.233	ng	100
13) 1,4-Dichlorobenzene	6.816	146	419682	37.052	ng	99
14) 1,2-Dichlorobenzene	6.969	146	397745	37.501	ng	100
15) Benzyl Alcohol	6.940	79	320021	38.584	ng	99
16) 2,2'-oxybis(1-Chloropr...	7.075	45	649089	37.839	ng	100
17) 2-Methylphenol	7.051	107	309553	37.247	ng	99
18) Hexachloroethane	7.310	117	156061	37.348	ng	99
19) n-Nitroso-di-n-propyla...	7.216	70	266872	37.005	ng	96
20) 3+4-Methylphenols	7.204	107	380083	37.247	ng	98
22) Acetophenone	7.210	105	500914	36.587	ng	99
24) Nitrobenzene	7.381	77	426364	37.656	ng	100
25) Isophorone	7.622	82	715169	37.866	ng	99
26) 2-Nitrophenol	7.698	139	203916	38.187	ng	99
27) 2,4-Dimethylphenol	7.734	122	261367	38.454	ng	99
28) bis(2-Chloroethoxy)met...	7.834	93	453765	37.666	ng	100
29) 2,4-Dichlorophenol	7.939	162	314718	37.822	ng	100
30) 1,2,4-Trichlorobenzene	8.022	180	351887	37.030	ng	100
31) Naphthalene	8.104	128	1129129	37.109	ng	100
32) Benzoic acid	7.845	122	242870	38.870	ng	99
33) 4-Chloroaniline	8.151	127	392735	38.063	ng	99
34) Hexachlorobutadiene	8.222	225	208442	37.404	ng	99
35) Caprolactam	8.522	113	104874	38.592	ng	96
36) 4-Chloro-3-methylphenol	8.634	107	339876	38.080	ng	98
37) 2-Methylnaphthalene	8.792	142	716771	37.063	ng	100
38) 1-Methylnaphthalene	8.892	142	705777	37.152	ng	100
40) 1,2,4,5-Tetrachloroben...	8.957	216	329038	37.450	ng	99
41) Hexachlorocyclopentadiene	8.945	237	106026	40.862	ng	100
43) 2,4,6-Trichlorophenol	9.069	196	222870	38.755	ng	98

Data Path : Z:\svoasrv\HPCHEM1\BNA_F\Data\BF013025\
 Data File : BF141301.D
 Acq On : 30 Jan 2025 08:54
 Operator : RC/JU
 Sample : SSTDCCC040
 Misc :
 ALS Vial : 2 Sample Multiplier: 1

Instrument :
 BNA_F
 ClientSampleId :
 SSTDCCC040

Quant Time: Jan 30 10:12:25 2025
 Quant Method : Z:\svoasrv\HPCHEM1\BNA_F\Methods\8270-BF012925.M
 Quant Title : ASP BNA STANDARDS FOR 5 POINT CALIBRATION
 QLast Update : Wed Jan 29 17:41:25 2025
 Response via : Initial Calibration

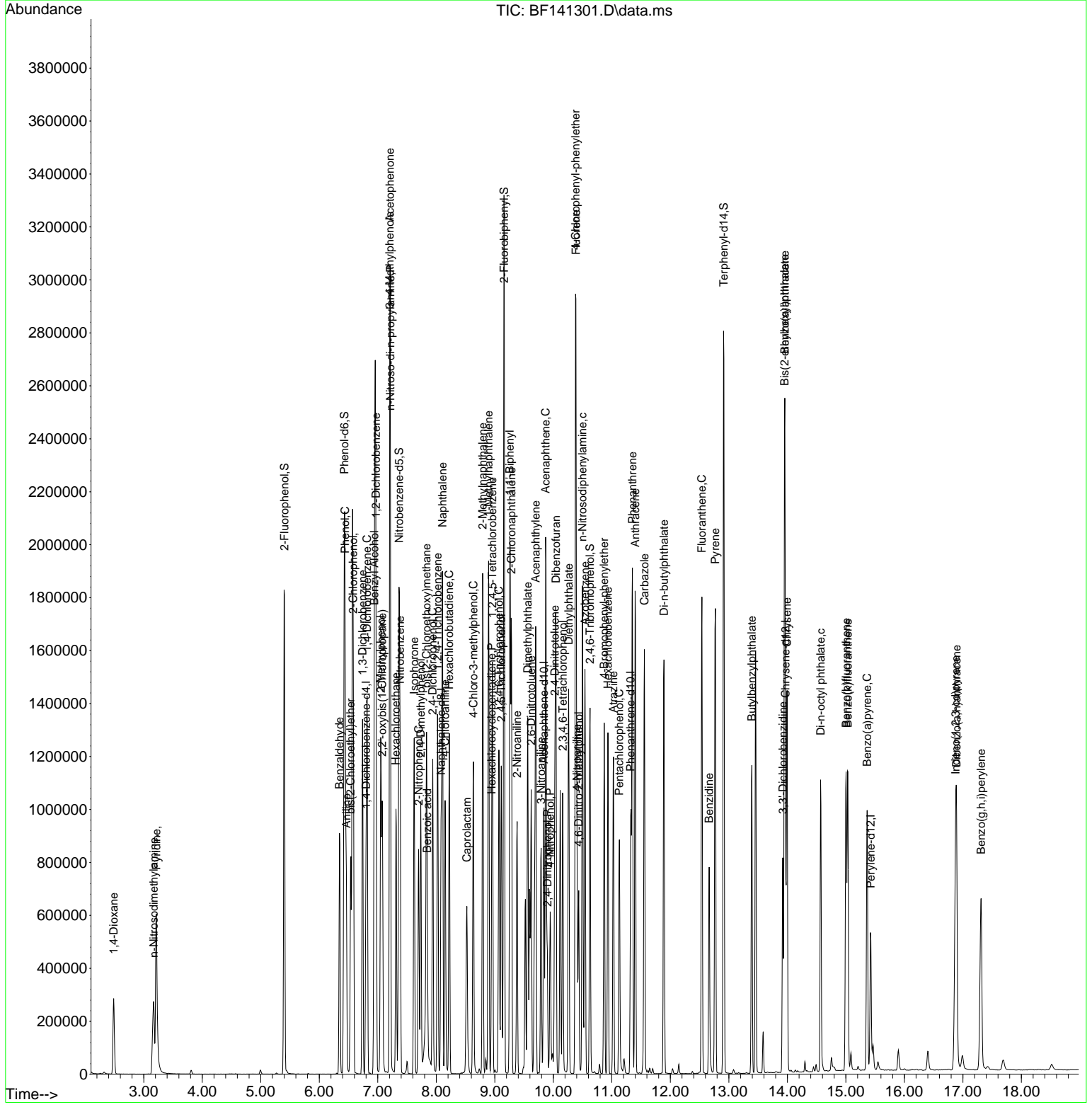
Compound	R.T.	QIon	Response	Conc	Units	Dev(Min)
44) 2,4,5-Trichlorophenol	9.110	196	231078	36.919	ng	99
46) 1,1'-Biphenyl	9.257	154	892160	37.042	ng	99
47) 2-Chloronaphthalene	9.281	162	688957	36.699	ng	99
48) 2-Nitroaniline	9.381	65	225042	38.111	ng	99
49) Acenaphthylene	9.698	152	984505	37.463	ng	100
50) Dimethylphthalate	9.563	163	777984	37.298	ng	100
51) 2,6-Dinitrotoluene	9.622	165	181065	37.386	ng	99
52) Acenaphthene	9.869	154	697843	37.171	ng	99
53) 3-Nitroaniline	9.792	138	182543	38.456	ng	100
54) 2,4-Dinitrophenol	9.898	184	85734	38.081	ng	99
55) Dibenzofuran	10.045	168	927873	36.923	ng	99
56) 4-Nitrophenol	9.945	139	136436	39.302	ng	100
57) 2,4-Dinitrotoluene	10.028	165	239168	38.142	ng	99
58) Fluorene	10.386	166	710687	36.459	ng	99
59) 2,3,4,6-Tetrachlorophenol	10.163	232	192623	39.118	ng	98
60) Diethylphthalate	10.263	149	751491	37.157	ng	100
61) 4-Chlorophenyl-phenyle...	10.381	204	351110	36.875	ng	99
62) 4-Nitroaniline	10.404	138	181893	38.976	ng	98
63) Azobenzene	10.539	77	756407	37.363	ng	100
65) 4,6-Dinitro-2-methylph...	10.433	198	125435	41.499	ng	99
66) n-Nitrosodiphenylamine	10.498	169	623386	37.717	ng	100
67) 4-Bromophenyl-phenylether	10.869	248	220361	38.519	ng	99
68) Hexachlorobenzene	10.933	284	234276	38.606	ng	100
69) Atrazine	11.028	200	198524	35.925	ng	98
70) Pentachlorophenol	11.128	266	145156	40.848	ng	99
71) Phenanthrene	11.351	178	1029763	37.489	ng	100
72) Anthracene	11.398	178	1009748	37.517	ng	100
73) Carbazole	11.557	167	908313	38.060	ng	99
74) Di-n-butylphthalate	11.892	149	1117730	38.646	ng	100
75) Fluoranthene	12.539	202	1026756	37.857	ng	100
77) Benzidine	12.663	184	424599	45.623	ng	99
78) Pyrene	12.769	202	1031587	37.019	ng	99
80) Butylbenzylphthalate	13.392	149	372260	38.238	ng	99
81) Benzo(a)anthracene	13.957	228	704605	35.173	ng	100
82) 3,3'-Dichlorobenzidine	13.921	252	236068	37.051	ng	99
83) Chrysene	13.992	228	689916	37.578	ng	100
84) Bis(2-ethylhexyl)phtha...	13.951	149	463244	37.511	ng	100
85) Di-n-octyl phthalate	14.568	149	706897	36.853	ng	100
87) Indeno(1,2,3-cd)pyrene	16.874	276	717281	37.195	ng	100
88) Benzo(b)fluoranthene	15.004	252	694461	36.951	ng	100
89) Benzo(k)fluoranthene	15.033	252	630825	37.889	ng	100
90) Benzo(a)pyrene	15.363	252	603540	38.001	ng	100
91) Dibenzo(a,h)anthracene	16.892	278	576450	37.155	ng	100
92) Benzo(g,h,i)perylene	17.309	276	594713	36.865	ng	99

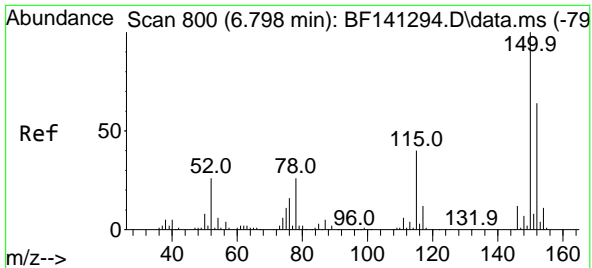
(#) = qualifier out of range (m) = manual integration (+) = signals summed

Data Path : Z:\svoasrv\HPCHEM1\BNA_F\Data\BF013025\
 Data File : BF141301.D
 Acq On : 30 Jan 2025 08:54
 Operator : RC/JU
 Sample : SSTDCCC040
 Misc :
 ALS Vial : 2 Sample Multiplier: 1

Instrument :
 BNA_F
 ClientSampleId :
 SSTDCCC040

Quant Time: Jan 30 10:12:25 2025
 Quant Method : Z:\svoasrv\HPCHEM1\BNA_F\Methods\8270-BF012925.M
 Quant Title : ASP BNA STANDARDS FOR 5 POINT CALIBRATION
 QLast Update : Wed Jan 29 17:41:25 2025
 Response via : Initial Calibration

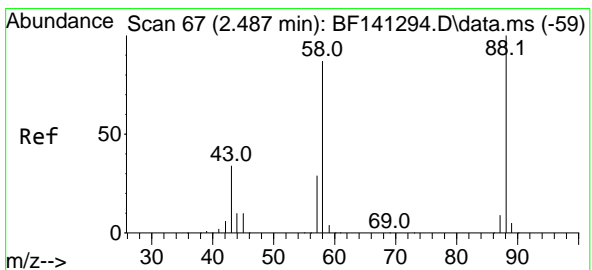
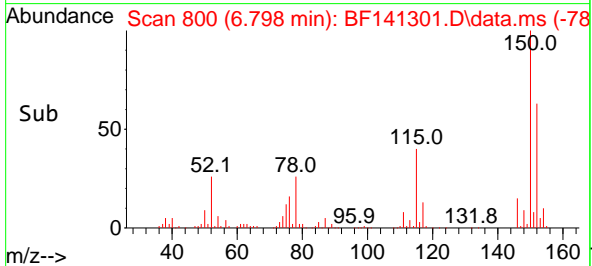
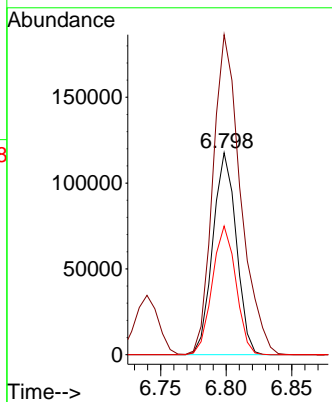
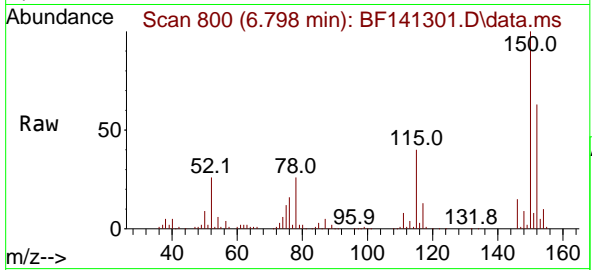




#1
 1,4-Dichlorobenzene-d4
 Concen: 20.000 ng
 RT: 6.798 min Scan# 800
 Delta R.T. -0.006 min
 Lab File: BF141301.D
 Acq: 30 Jan 2025 08:54

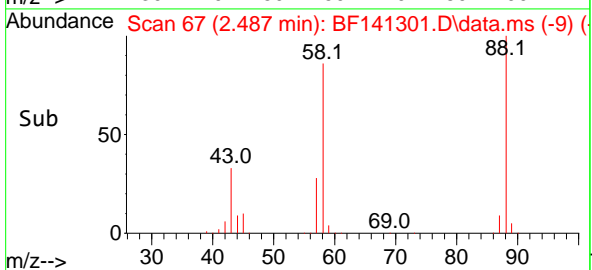
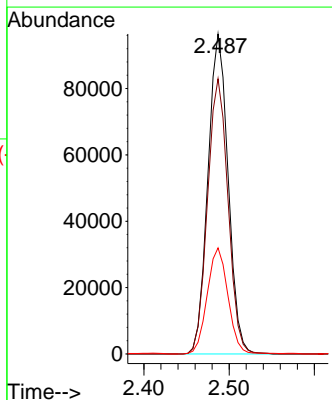
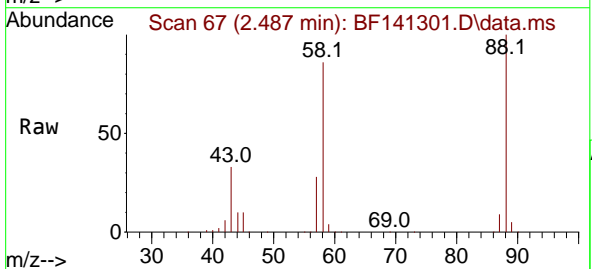
Instrument : BNA_F
 ClientSampleId : SSTDCCC040

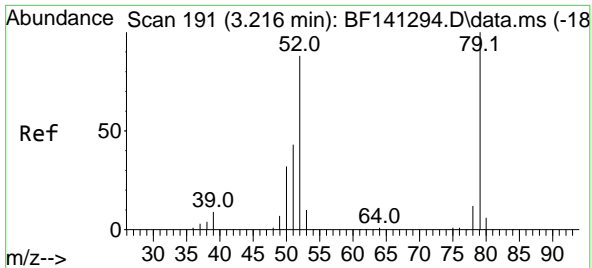
Tgt Ion:152 Resp: 146467
 Ion Ratio Lower Upper
 152 100
 150 158.5 125.9 188.9
 115 63.7 49.7 74.5



#2
 1,4-Dioxane
 Concen: 37.813 ng
 RT: 2.487 min Scan# 67
 Delta R.T. -0.006 min
 Lab File: BF141301.D
 Acq: 30 Jan 2025 08:54

Tgt Ion: 88 Resp: 158660
 Ion Ratio Lower Upper
 88 100
 58 87.4 70.2 105.4
 43 34.2 27.6 41.4





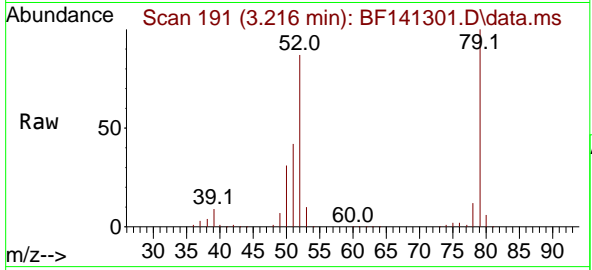
#3
 Pyridine
 Concen: 38.682 ng
 RT: 3.216 min Scan# 191
 Delta R.T. -0.012 min
 Lab File: BF141301.D
 Acq: 30 Jan 2025 08:54

Instrument :

BNA_F

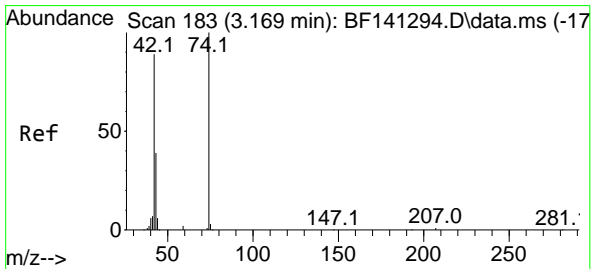
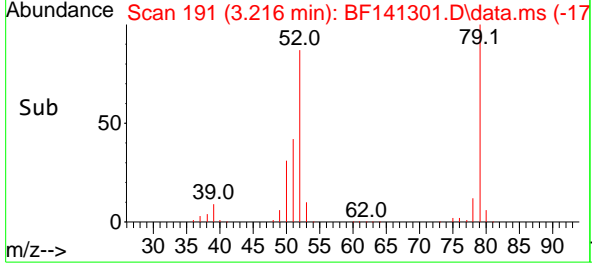
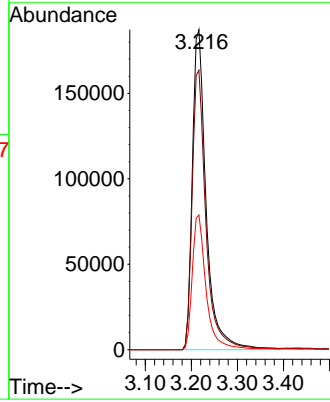
ClientSampleId :

SSTDCCC040

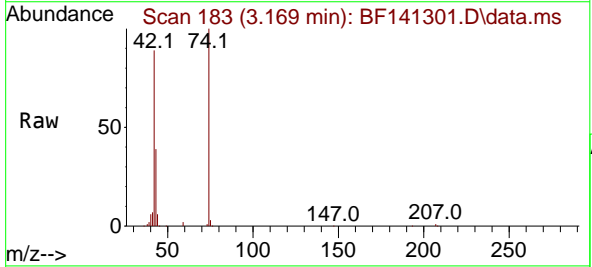


Tgt Ion: 79 Resp: 391062

Ion	Ratio	Lower	Upper
79	100		
52	87.3	70.3	105.5
51	42.1	34.3	51.5

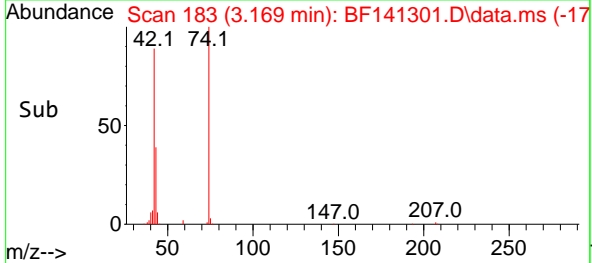
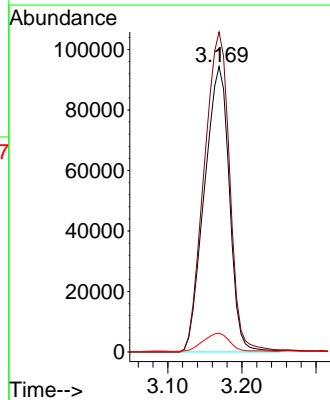


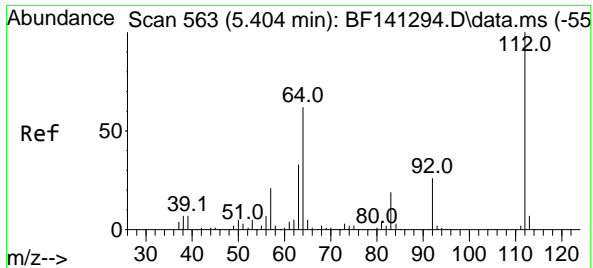
#4
 n-Nitrosodimethylamine
 Concen: 38.256 ng
 RT: 3.169 min Scan# 183
 Delta R.T. -0.029 min
 Lab File: BF141301.D
 Acq: 30 Jan 2025 08:54



Tgt Ion: 42 Resp: 220937

Ion	Ratio	Lower	Upper
42	100		
74	112.1	90.3	135.5
44	6.6	5.7	8.5



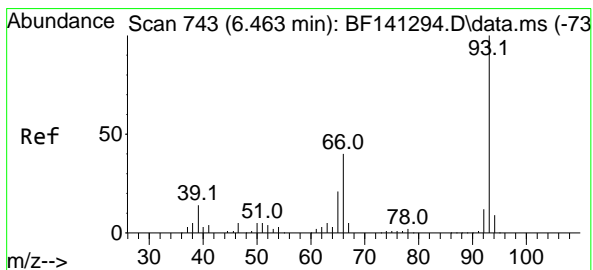
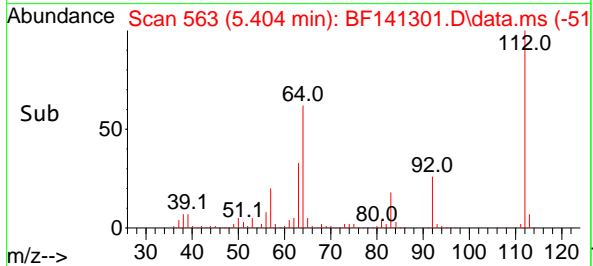
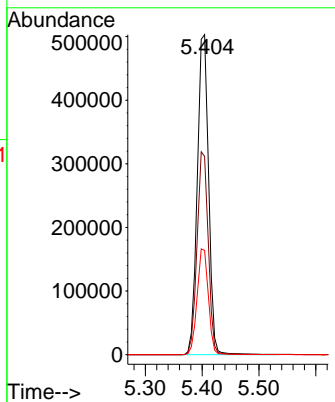
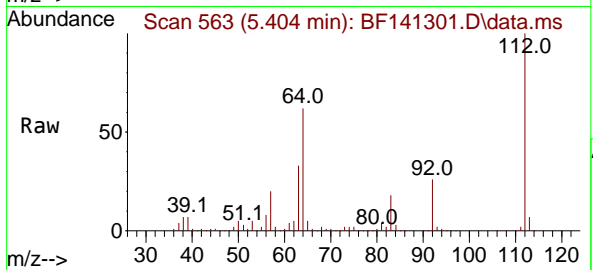


#5
 2-Fluorophenol
 Concen: 73.339 ng
 RT: 5.404 min Scan# 50
 Delta R.T. -0.006 min
 Lab File: BF141301.D
 Acq: 30 Jan 2025 08:54

Instrument : BNA_F
 ClientSampleId : SSTDCCC040

Tgt Ion: 112 Resp: 699692

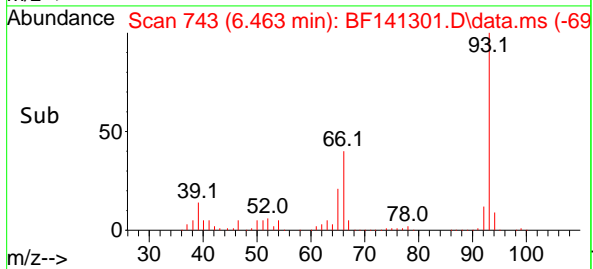
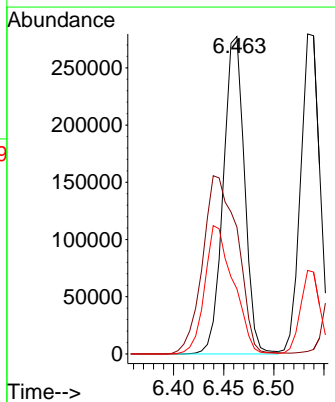
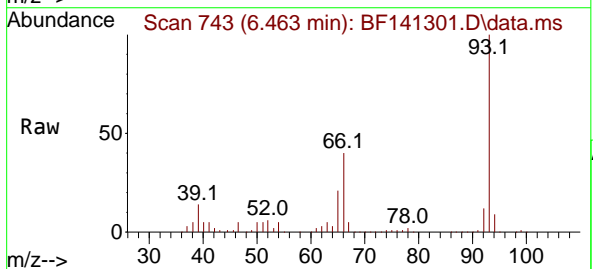
Ion	Ratio	Lower	Upper
112	100		
64	61.9	49.8	74.8
63	32.6	26.1	39.1

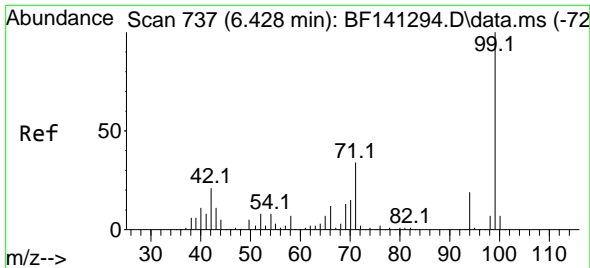


#6
 Aniline
 Concen: 39.701 ng
 RT: 6.463 min Scan# 743
 Delta R.T. -0.006 min
 Lab File: BF141301.D
 Acq: 30 Jan 2025 08:54

Tgt Ion: 93 Resp: 407872

Ion	Ratio	Lower	Upper
93	100		
66	40.0	32.5	48.7
65	20.5	17.0	25.6



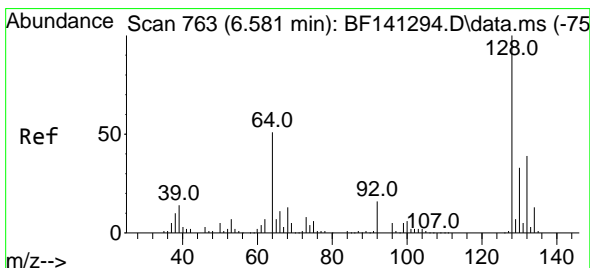
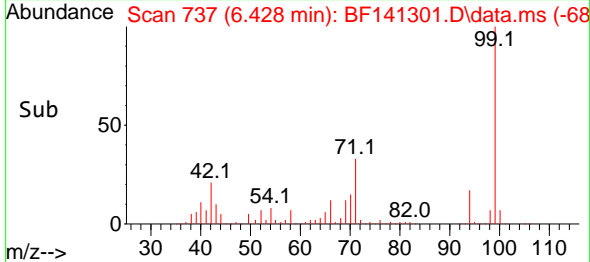
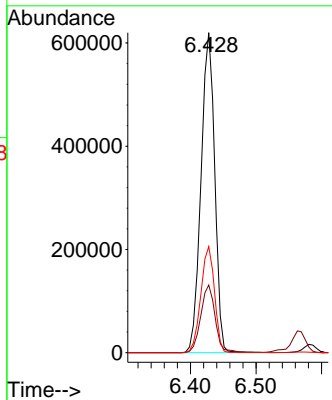
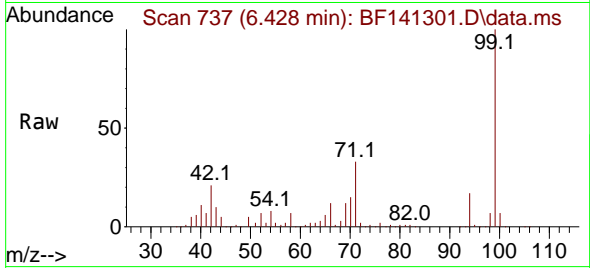


#7
 Phenol-d6
 Concen: 74.578 ng
 RT: 6.428 min Scan# 711
 Delta R.T. -0.012 min
 Lab File: BF141301.D
 Acq: 30 Jan 2025 08:54

Instrument :
 BNA_F
 ClientSampleId :
 SSTDCCC040

Tgt Ion: 99 Resp: 905142

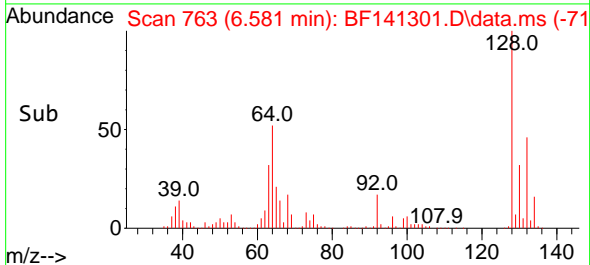
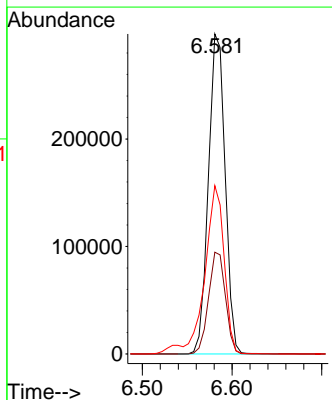
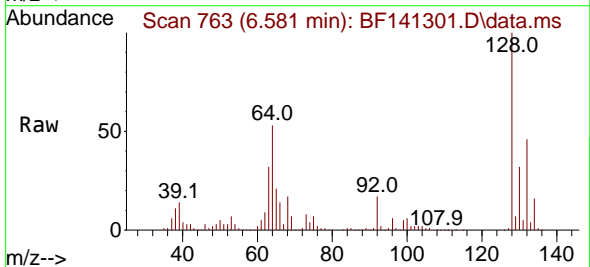
Ion	Ratio	Lower	Upper
99	100		
42	21.2	17.1	25.7
71	33.2	26.9	40.3

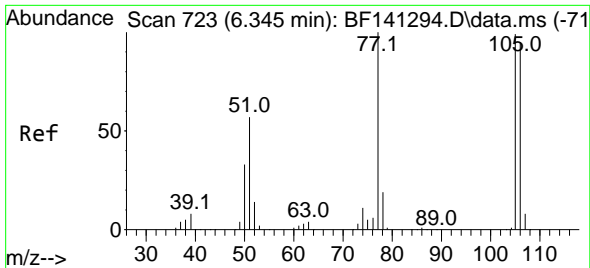


#8
 2-Chlorophenol
 Concen: 37.714 ng
 RT: 6.581 min Scan# 763
 Delta R.T. -0.012 min
 Lab File: BF141301.D
 Acq: 30 Jan 2025 08:54

Tgt Ion: 128 Resp: 385660

Ion	Ratio	Lower	Upper
128	100		
130	31.8	12.5	52.5
64	52.6	32.9	72.9



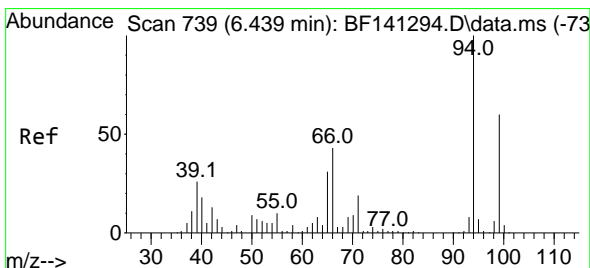
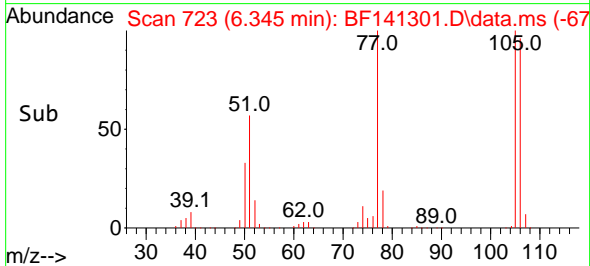
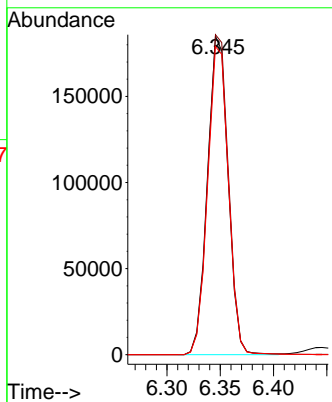
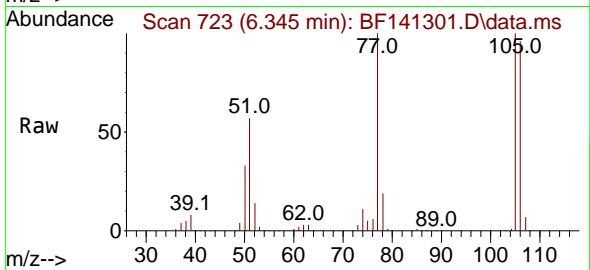


#9
 Benzaldehyde
 Concen: 35.516 ng
 RT: 6.345 min Scan# 71
 Delta R.T. -0.006 min
 Lab File: BF141301.D
 Acq: 30 Jan 2025 08:54

Instrument : BNA_F
 ClientSampleId : SSTDCCC040

Tgt Ion: 77 Resp: 249683

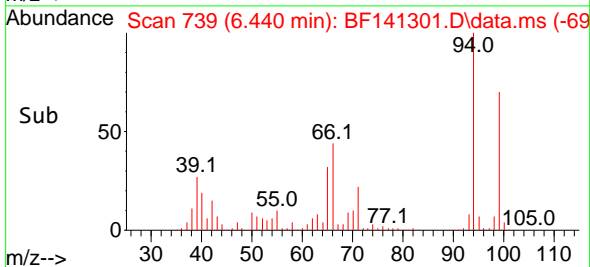
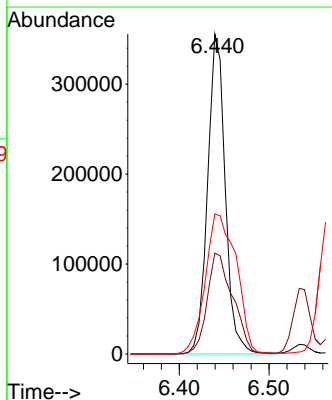
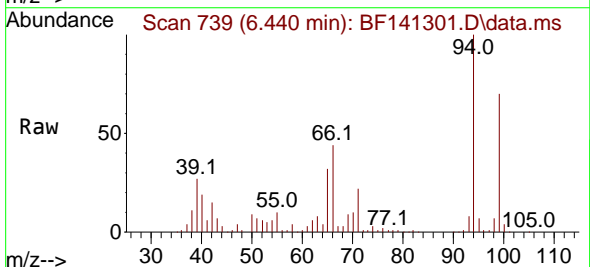
Ion	Ratio	Lower	Upper
77	100		
105	100.4	79.4	119.4
106	96.7	74.6	114.6

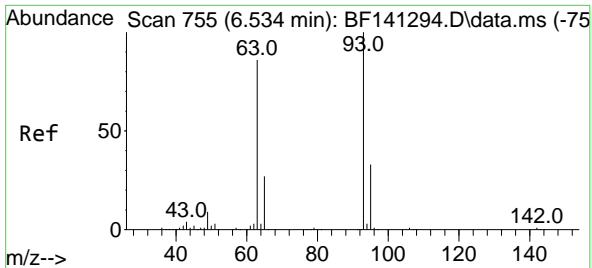


#10
 Phenol
 Concen: 37.734 ng
 RT: 6.440 min Scan# 739
 Delta R.T. -0.012 min
 Lab File: BF141301.D
 Acq: 30 Jan 2025 08:54

Tgt Ion: 94 Resp: 485474

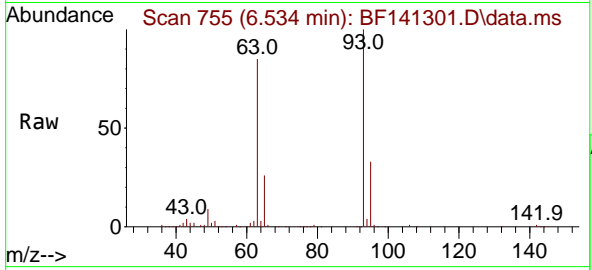
Ion	Ratio	Lower	Upper
94	100		
65	31.5	10.8	50.8
66	43.8	23.3	63.3





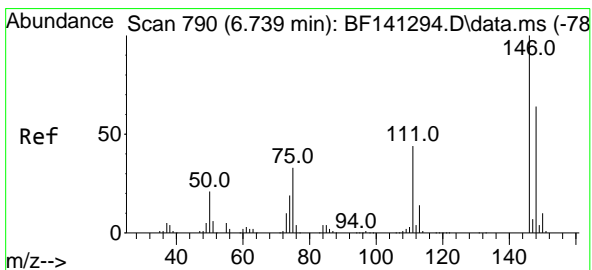
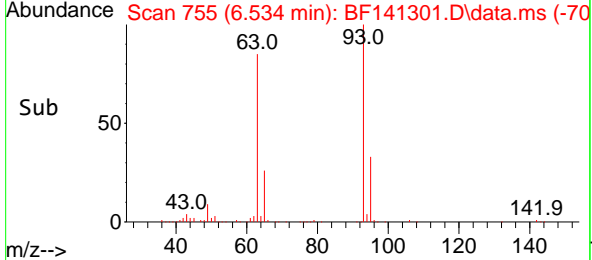
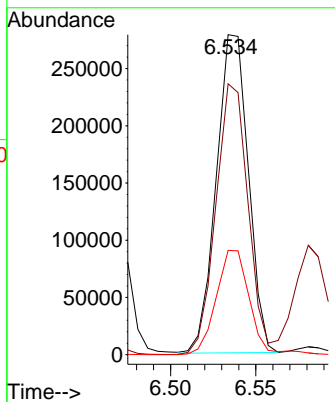
#11
 bis(2-Chloroethyl)ether
 Concen: 36.896 ng
 RT: 6.534 min Scan# 711
 Delta R.T. -0.012 min
 Lab File: BF141301.D
 Acq: 30 Jan 2025 08:54

Instrument : BNA_F
 ClientSampleId : SSTDCCC040



Tgt Ion: 93 Resp: 363969

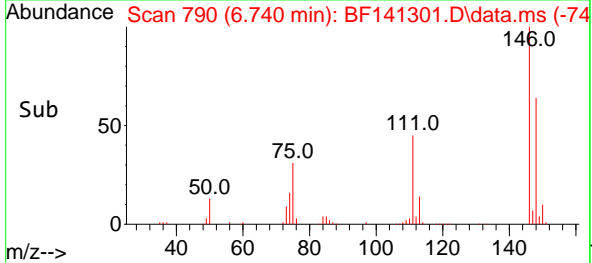
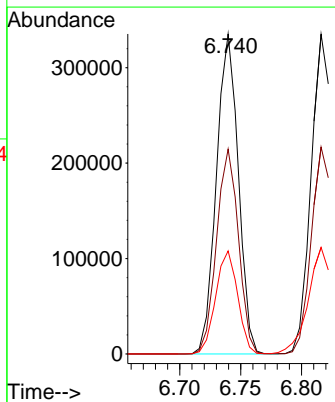
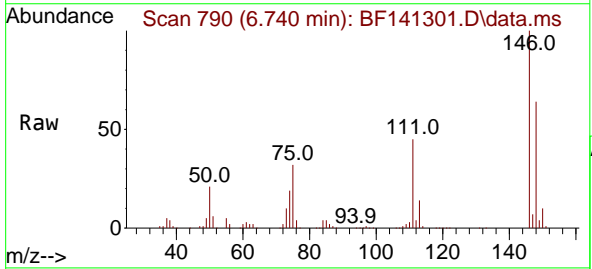
Ion	Ratio	Lower	Upper
93	100		
63	84.6	65.0	105.0
95	32.6	12.4	52.4

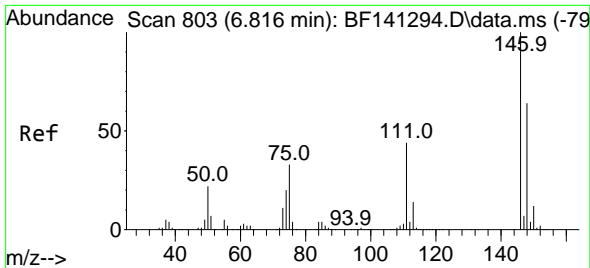


#12
 1,3-Dichlorobenzene
 Concen: 37.233 ng
 RT: 6.740 min Scan# 790
 Delta R.T. -0.006 min
 Lab File: BF141301.D
 Acq: 30 Jan 2025 08:54

Tgt Ion: 146 Resp: 419797

Ion	Ratio	Lower	Upper
146	100		
148	64.0	51.2	76.8
75	32.2	26.2	39.4

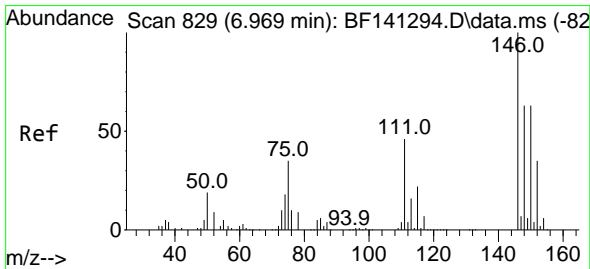
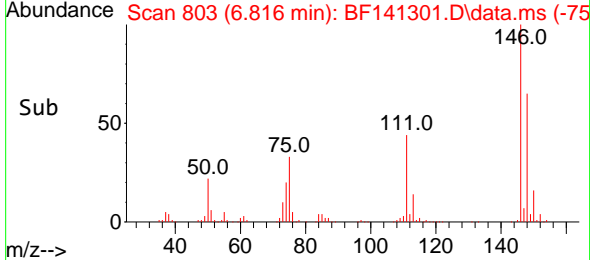
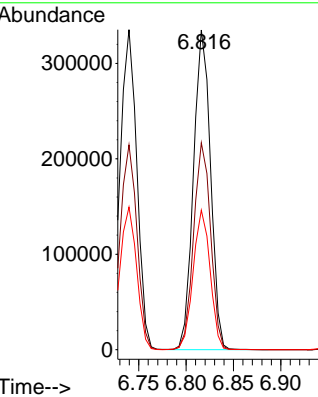
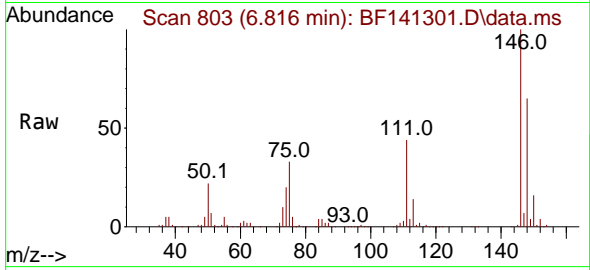




#13
 1,4-Dichlorobenzene
 Concen: 37.052 ng
 RT: 6.816 min Scan# 803
 Delta R.T. -0.006 min
 Lab File: BF141301.D
 Acq: 30 Jan 2025 08:54

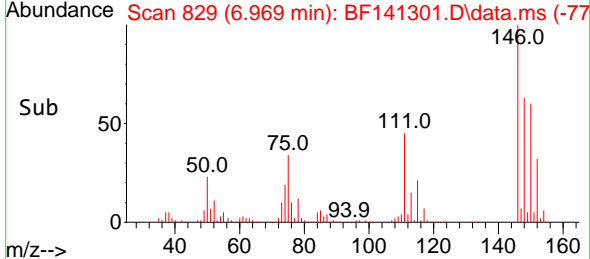
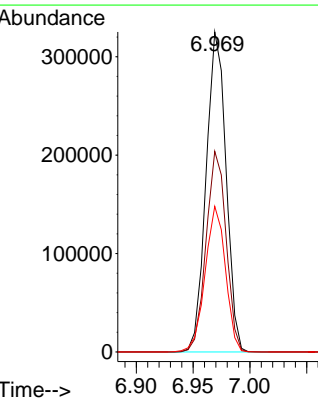
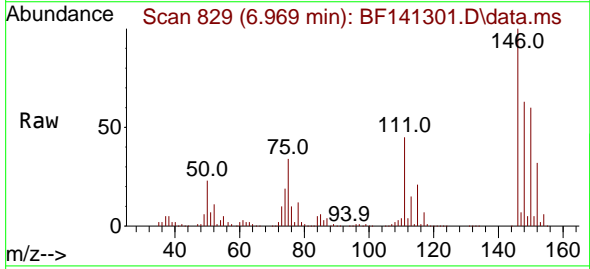
Instrument : BNA_F
 ClientSampleId : SSTDCCC040

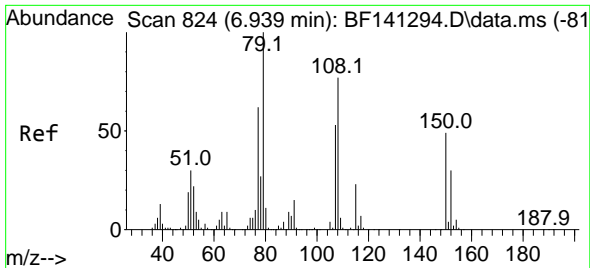
Tgt Ion:146 Resp: 419682
 Ion Ratio Lower Upper
 146 100
 148 64.7 51.2 76.8
 111 43.6 35.0 52.4



#14
 1,2-Dichlorobenzene
 Concen: 37.501 ng
 RT: 6.969 min Scan# 829
 Delta R.T. -0.006 min
 Lab File: BF141301.D
 Acq: 30 Jan 2025 08:54

Tgt Ion:146 Resp: 397745
 Ion Ratio Lower Upper
 146 100
 148 62.7 50.5 75.7
 111 45.5 36.6 55.0



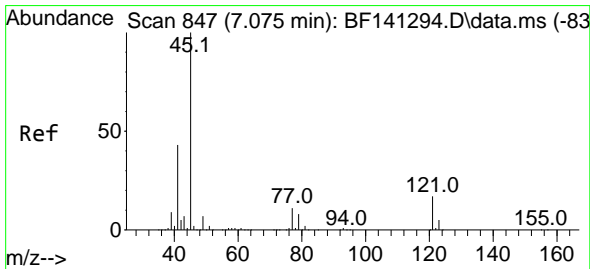
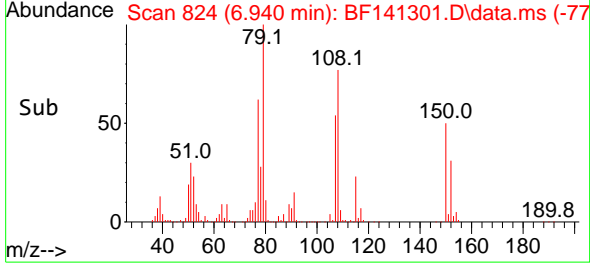
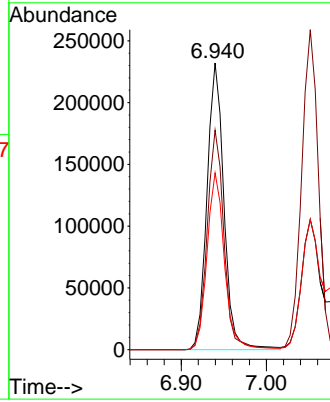
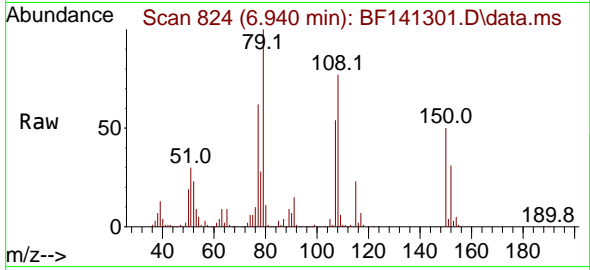


#15
 Benzyl Alcohol
 Concen: 38.584 ng
 RT: 6.940 min Scan# 81
 Delta R.T. -0.006 min
 Lab File: BF141301.D
 Acq: 30 Jan 2025 08:54

Instrument :
 BNA_F
 ClientSampleId :
 SSTDCCC040

Tgt Ion: 79 Resp: 320021

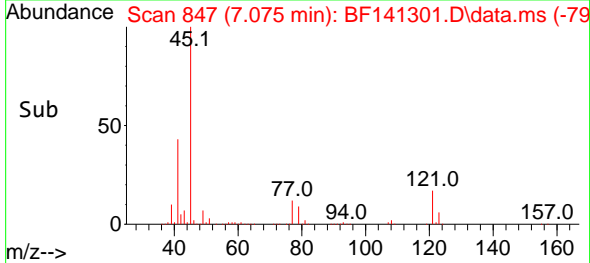
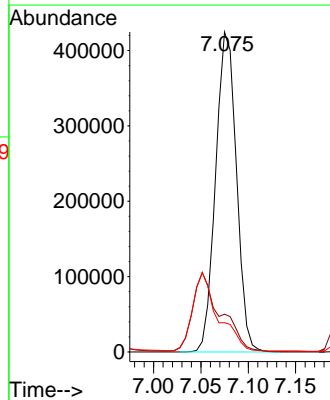
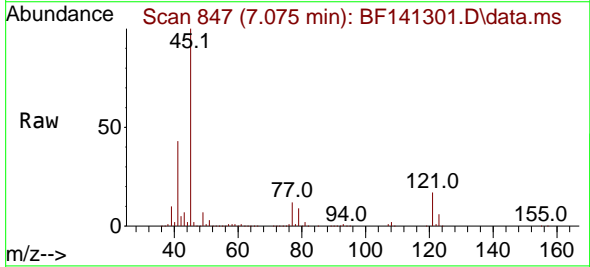
Ion	Ratio	Lower	Upper
79	100		
108	76.6	61.4	92.0
77	61.7	49.9	74.9

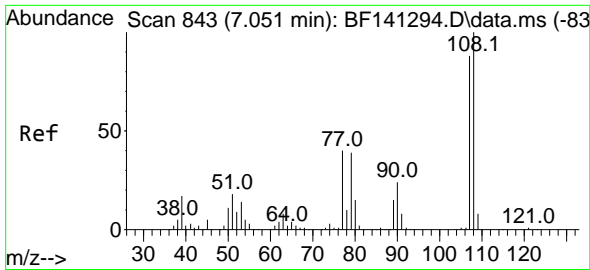


#16
 2,2'-oxybis(1-Chloropropane)
 Concen: 37.839 ng
 RT: 7.075 min Scan# 847
 Delta R.T. -0.006 min
 Lab File: BF141301.D
 Acq: 30 Jan 2025 08:54

Tgt Ion: 45 Resp: 649089

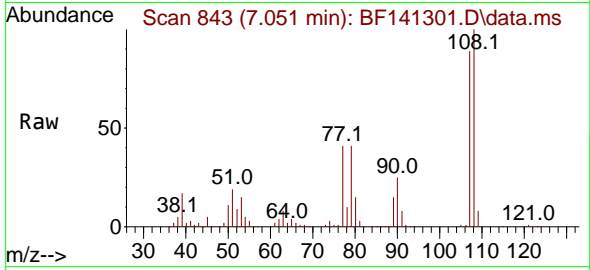
Ion	Ratio	Lower	Upper
45	100		
77	11.8	0.0	31.8
79	9.2	0.0	29.1





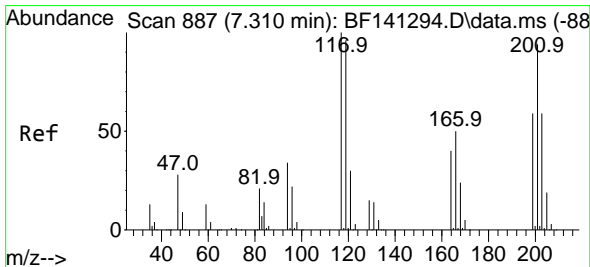
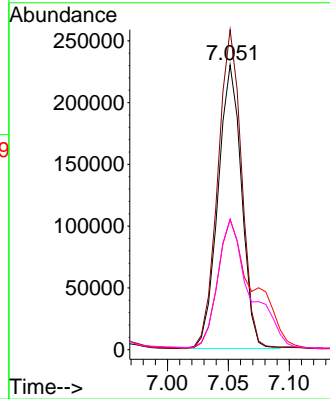
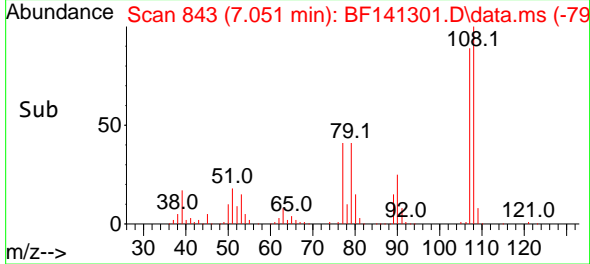
#17
 2-Methylphenol
 Concen: 37.247 ng
 RT: 7.051 min Scan# 84
 Delta R.T. -0.006 min
 Lab File: BF141301.D
 Acq: 30 Jan 2025 08:54

Instrument :
 BNA_F
 ClientSampleId :
 SSTDCCC040

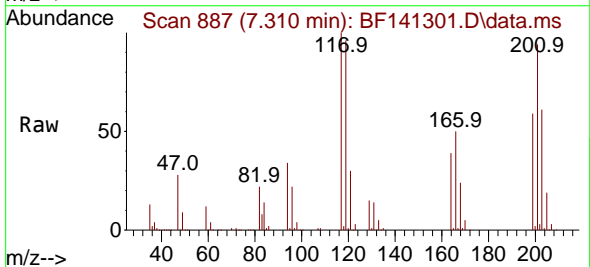


Tgt Ion:107 Resp: 309553

Ion	Ratio	Lower	Upper
107	100		
108	112.4	90.8	136.2
77	45.7	36.2	54.4
79	45.8	35.7	53.5

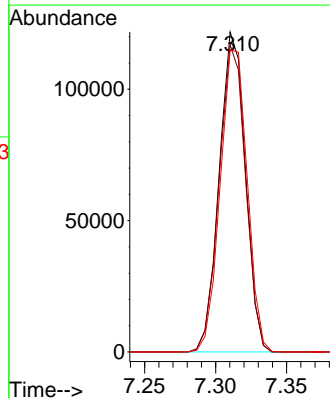
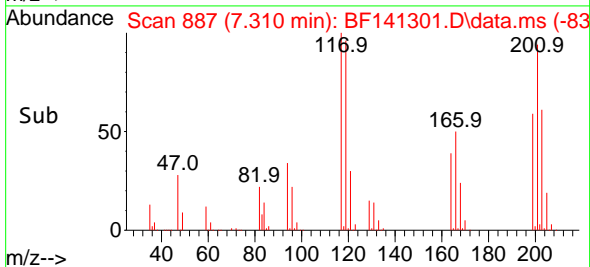


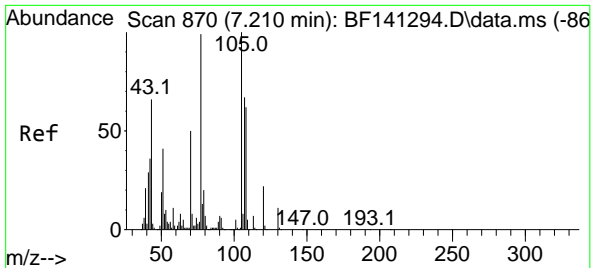
#18
 Hexachloroethane
 Concen: 37.348 ng
 RT: 7.310 min Scan# 887
 Delta R.T. -0.006 min
 Lab File: BF141301.D
 Acq: 30 Jan 2025 08:54



Tgt Ion:117 Resp: 156061

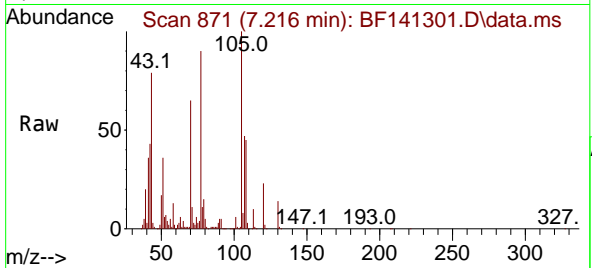
Ion	Ratio	Lower	Upper
117	100		
119	96.0	76.6	114.8
201	94.5	74.8	112.2





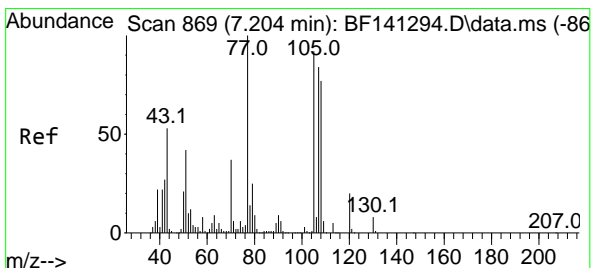
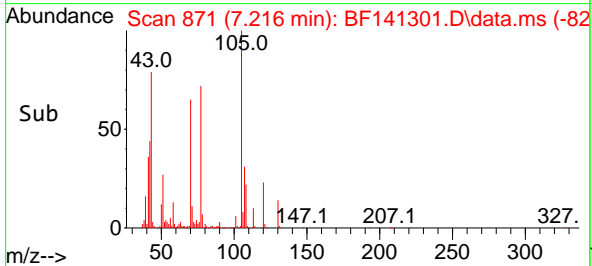
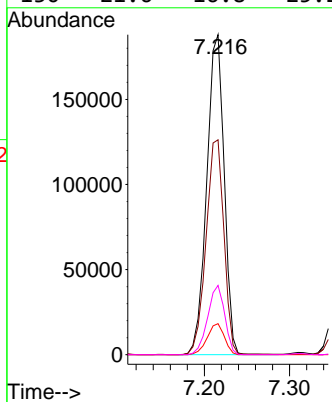
#19
 n-Nitroso-di-n-propylamine
 Concen: 37.005 ng
 RT: 7.216 min Scan# 81
 Delta R.T. -0.012 min
 Lab File: BF141301.D
 Acq: 30 Jan 2025 08:54

Instrument :
 BNA_F
 ClientSampleId :
 SSTDCCC040

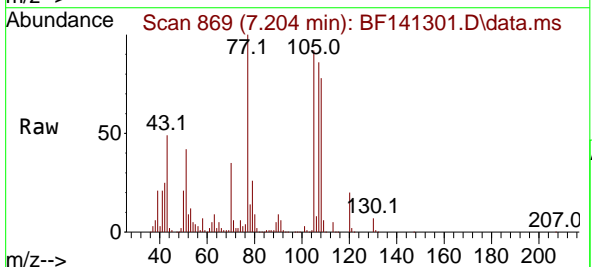


Tgt Ion: 70 Resp: 266872

Ion	Ratio	Lower	Upper
70	100		
42	67.1	56.8	85.2
101	9.7	7.7	11.5
130	21.6	16.8	25.2

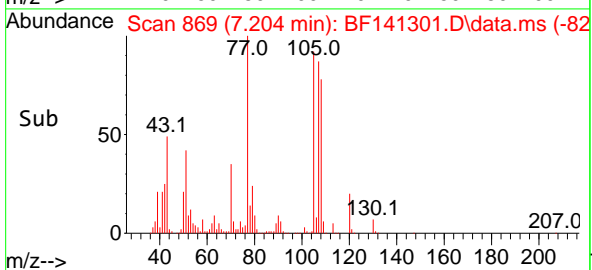
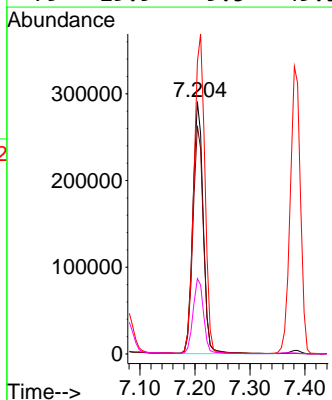


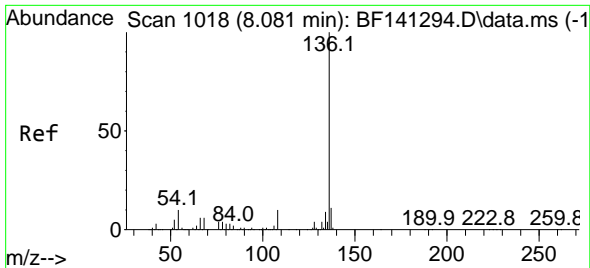
#20
 3+4-Methylphenols
 Concen: 37.247 ng
 RT: 7.204 min Scan# 869
 Delta R.T. -0.012 min
 Lab File: BF141301.D
 Acq: 30 Jan 2025 08:54



Tgt Ion: 107 Resp: 380083

Ion	Ratio	Lower	Upper
107	100		
108	90.4	70.9	110.9
77	115.7	98.5	138.5
79	29.9	9.5	49.5



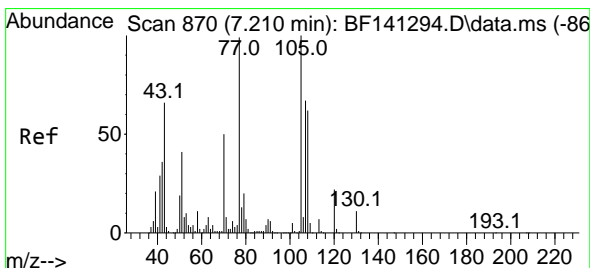
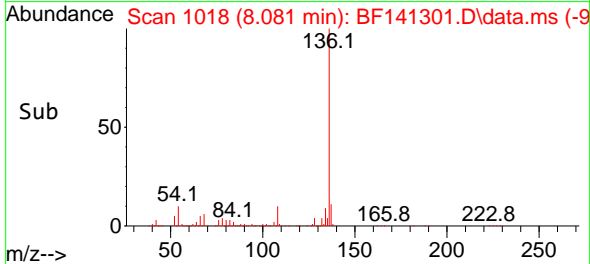
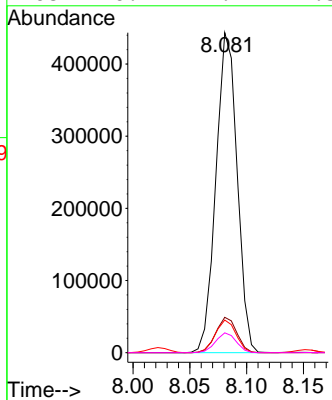
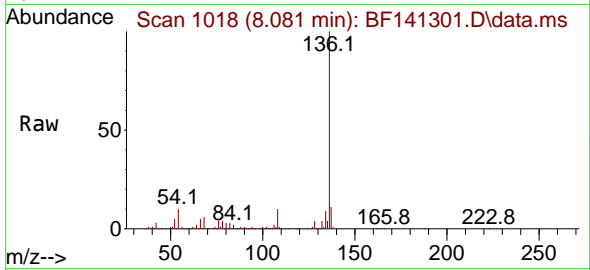


#21
 Naphthalene-d8
 Concen: 20.000 ng
 RT: 8.081 min Scan# 1018
 Delta R.T. -0.006 min
 Lab File: BF141301.D
 Acq: 30 Jan 2025 08:54

Instrument : BNA_F
 ClientSampleId : SSTDCCC040

Tgt Ion:136 Resp: 575983

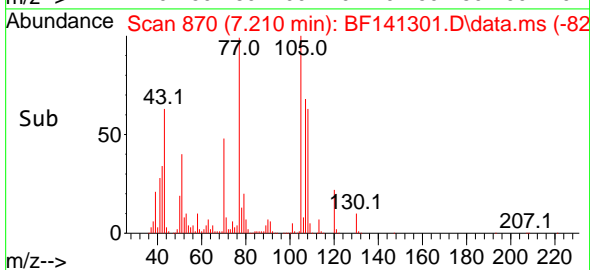
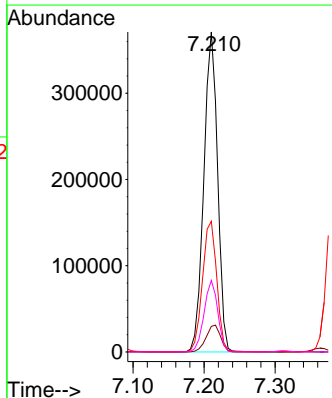
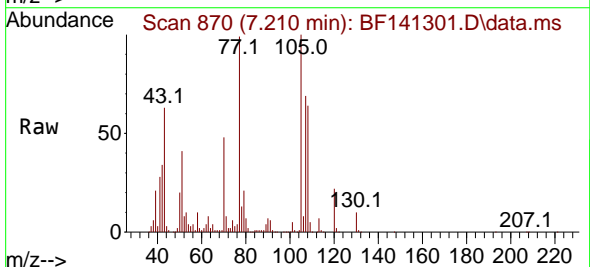
Ion	Ratio	Lower	Upper
136	100		
137	11.1	8.6	13.0
54	10.2	7.8	11.8
68	6.2	4.9	7.3

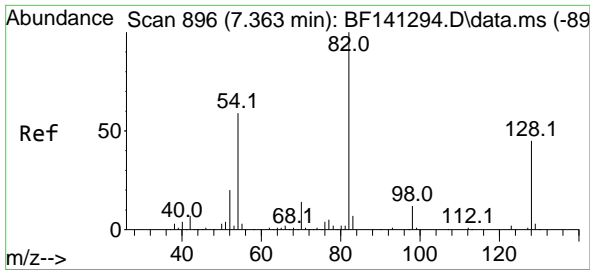


#22
 Acetophenone
 Concen: 36.587 ng
 RT: 7.210 min Scan# 870
 Delta R.T. -0.006 min
 Lab File: BF141301.D
 Acq: 30 Jan 2025 08:54

Tgt Ion:105 Resp: 500914

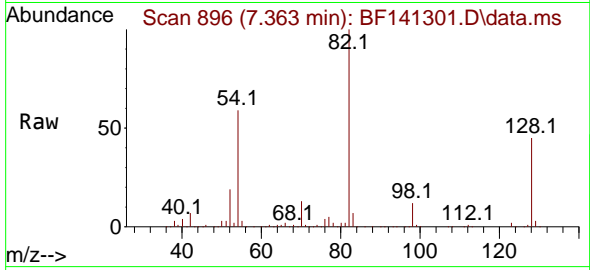
Ion	Ratio	Lower	Upper
105	100		
71	8.0	6.8	10.2
51	40.8	32.6	49.0
120	22.4	17.4	26.0



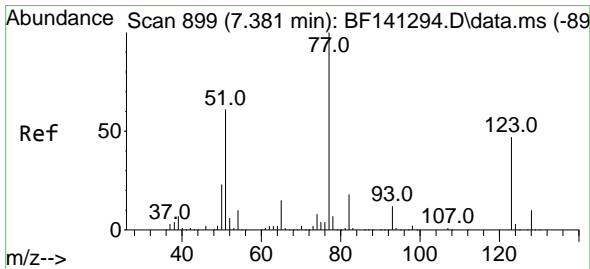
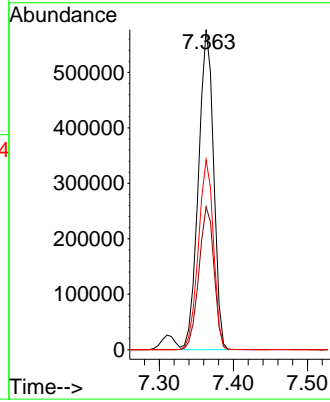
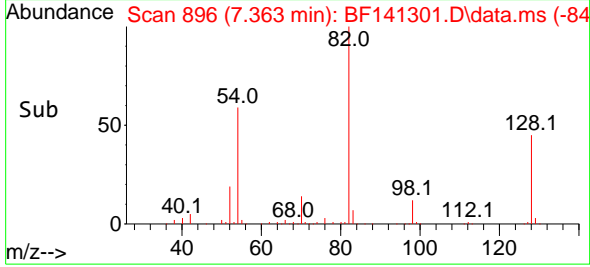


#23
 Nitrobenzene-d5
 Concen: 75.011 ng
 RT: 7.363 min Scan# 896
 Delta R.T. -0.006 min
 Lab File: BF141301.D
 Acq: 30 Jan 2025 08:54

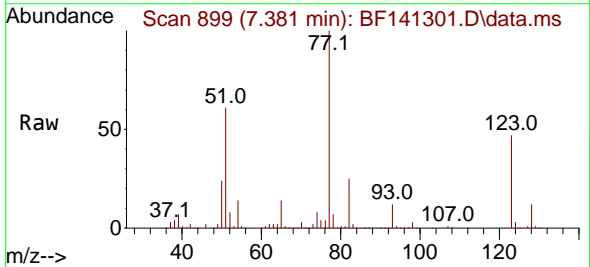
Instrument :
 BNA_F
 ClientSampleId :
 SSTDCCC040



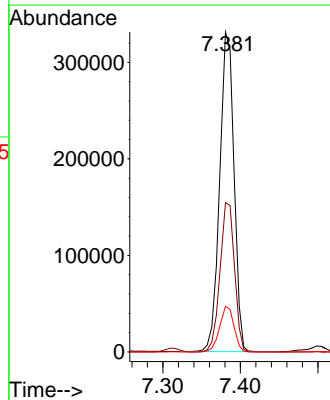
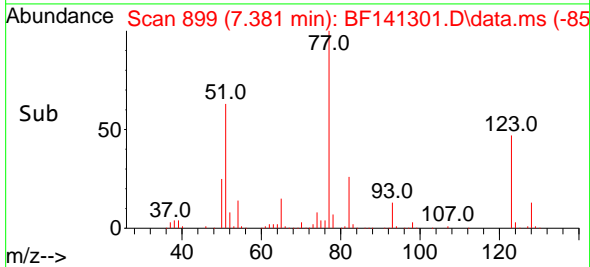
Tgt Ion: 82 Resp: 819573
 Ion Ratio Lower Upper
 82 100
 128 44.7 35.7 53.5
 54 59.3 47.1 70.7

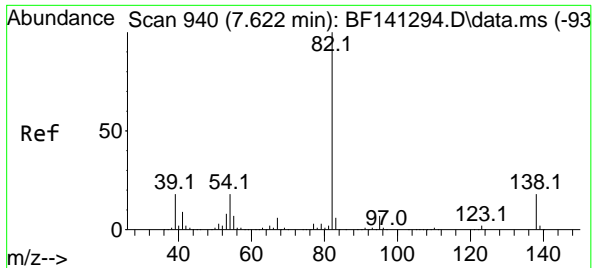


#24
 Nitrobenzene
 Concen: 37.656 ng
 RT: 7.381 min Scan# 899
 Delta R.T. -0.012 min
 Lab File: BF141301.D
 Acq: 30 Jan 2025 08:54



Tgt Ion: 77 Resp: 426364
 Ion Ratio Lower Upper
 77 100
 123 46.7 37.3 55.9
 65 14.2 11.8 17.6



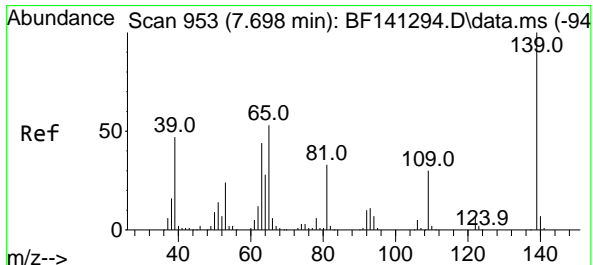
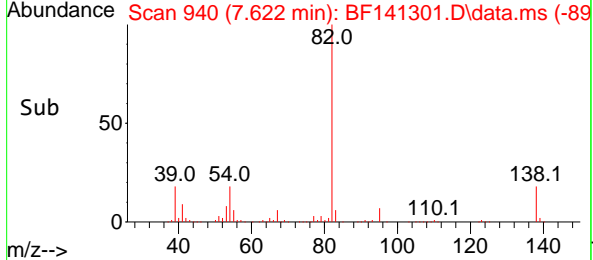
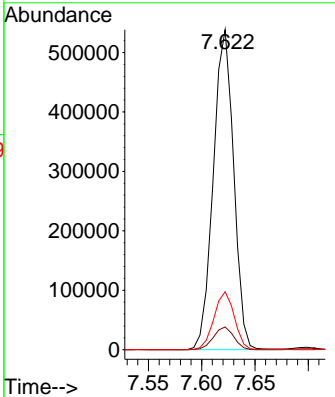
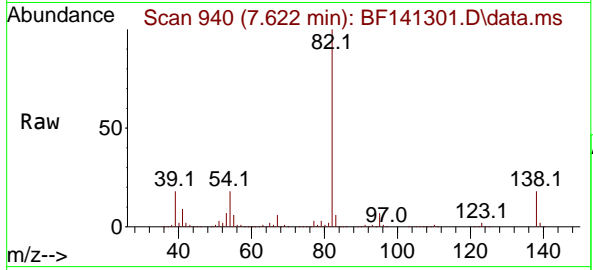


#25
 Isophorone
 Concen: 37.866 ng
 RT: 7.622 min Scan# 940
 Delta R.T. -0.006 min
 Lab File: BF141301.D
 Acq: 30 Jan 2025 08:54

Instrument : BNA_F
 ClientSampleId : SSTDCCC040

Tgt Ion: 82 Resp: 715169

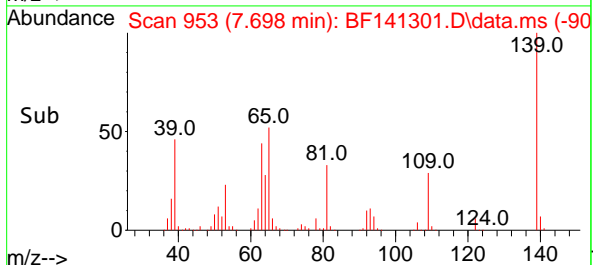
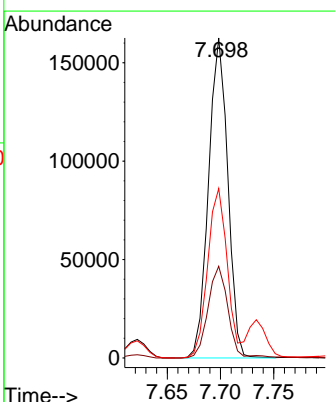
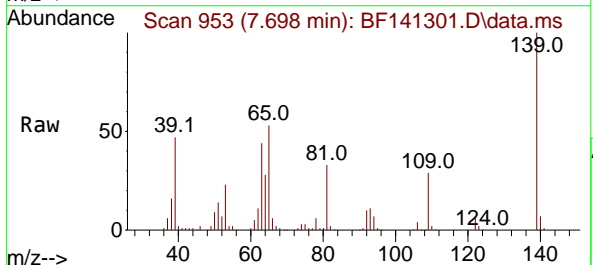
Ion	Ratio	Lower	Upper
82	100		
95	7.1	5.8	8.6
138	18.1	14.7	22.1

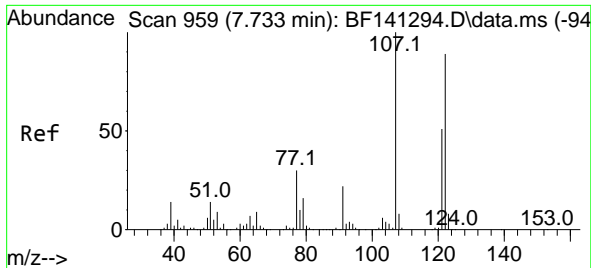


#26
 2-Nitrophenol
 Concen: 38.187 ng
 RT: 7.698 min Scan# 953
 Delta R.T. -0.006 min
 Lab File: BF141301.D
 Acq: 30 Jan 2025 08:54

Tgt Ion: 139 Resp: 203916

Ion	Ratio	Lower	Upper
139	100		
109	28.6	23.8	35.6
65	52.9	42.2	63.4

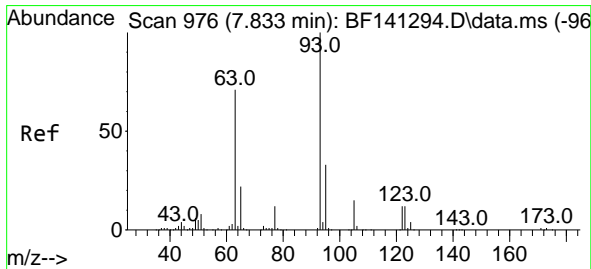
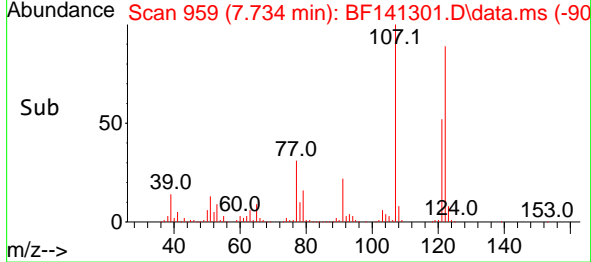
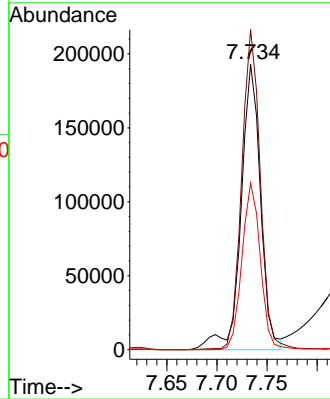
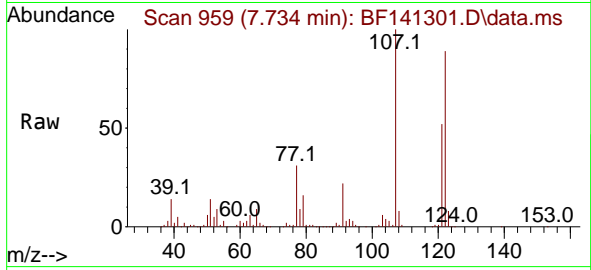




#27
 2,4-Dimethylphenol
 Concen: 38.454 ng
 RT: 7.734 min Scan# 911
 Delta R.T. -0.006 min
 Lab File: BF141301.D
 Acq: 30 Jan 2025 08:54

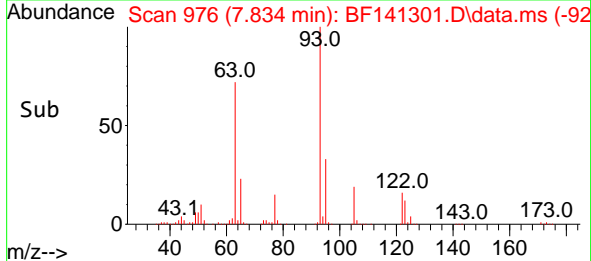
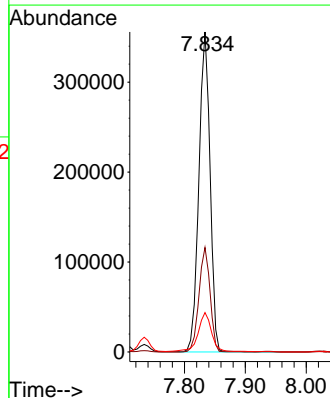
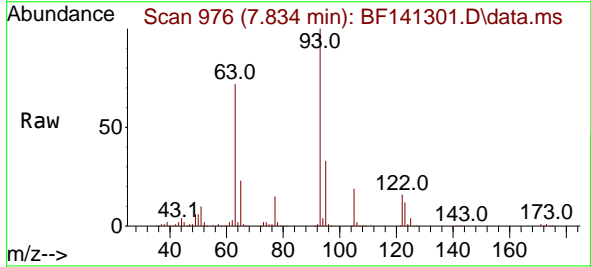
Instrument :
 BNA_F
 ClientSampleId :
 SSTDCCC040

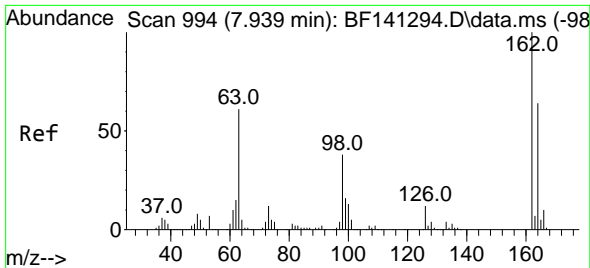
Tgt Ion:122 Resp: 261367
 Ion Ratio Lower Upper
 122 100
 107 112.0 89.9 134.9
 121 58.3 46.1 69.1



#28
 bis(2-Chloroethoxy)methane
 Concen: 37.666 ng
 RT: 7.834 min Scan# 976
 Delta R.T. -0.006 min
 Lab File: BF141301.D
 Acq: 30 Jan 2025 08:54

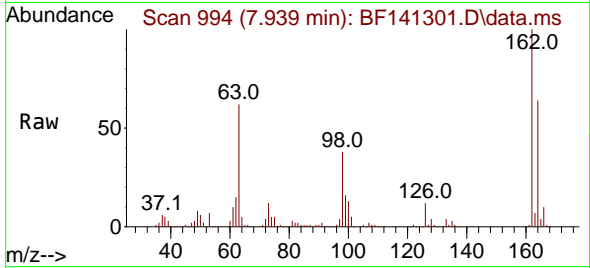
Tgt Ion: 93 Resp: 453765
 Ion Ratio Lower Upper
 93 100
 95 32.6 26.2 39.2
 123 12.3 10.2 15.4



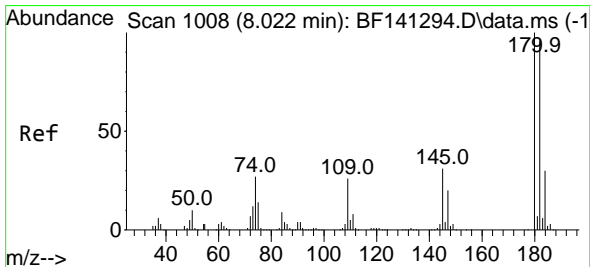
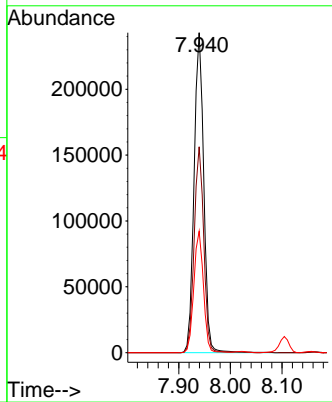
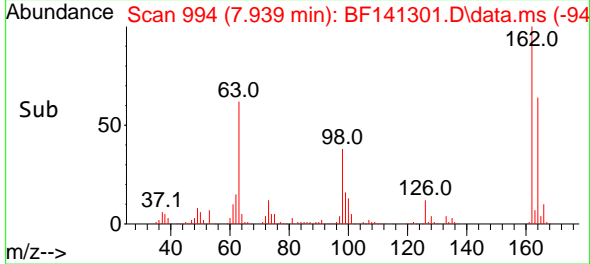


#29
 2,4-Dichlorophenol
 Concen: 37.822 ng
 RT: 7.939 min Scan# 994
 Delta R.T. -0.006 min
 Lab File: BF141301.D
 Acq: 30 Jan 2025 08:54

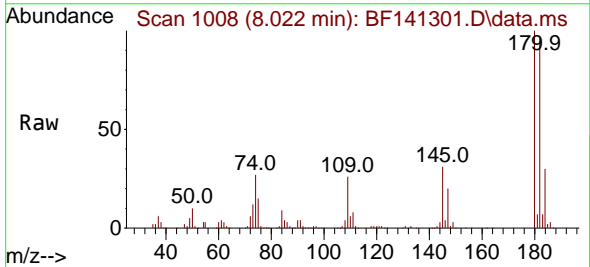
Instrument : BNA_F
 ClientSampleId : SSTDCCC040



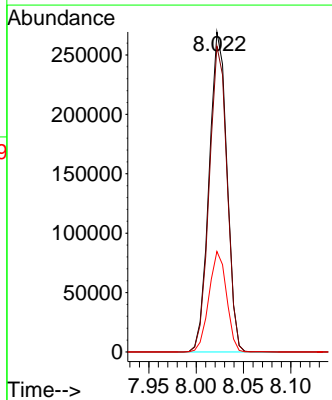
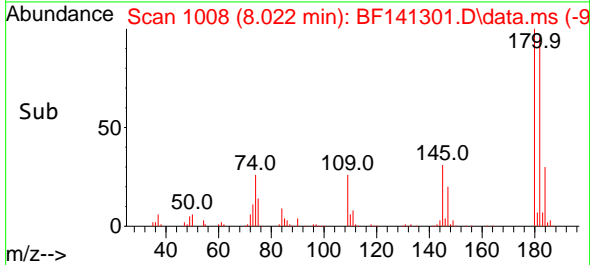
Tgt Ion:162 Resp: 314718
 Ion Ratio Lower Upper
 162 100
 164 64.3 44.2 84.2
 98 37.9 18.2 58.2

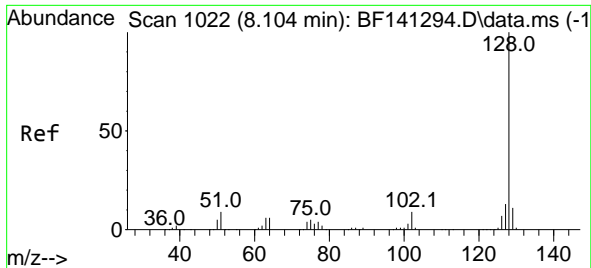


#30
 1,2,4-Trichlorobenzene
 Concen: 37.030 ng
 RT: 8.022 min Scan# 1008
 Delta R.T. -0.006 min
 Lab File: BF141301.D
 Acq: 30 Jan 2025 08:54



Tgt Ion:180 Resp: 351887
 Ion Ratio Lower Upper
 180 100
 182 95.6 76.4 114.6
 145 31.4 24.9 37.3

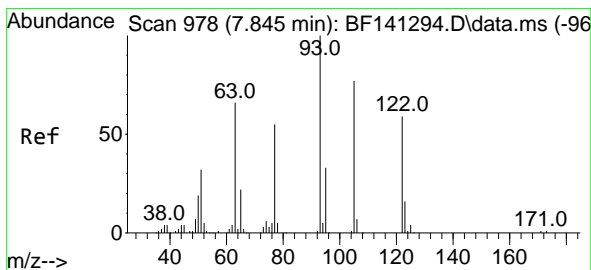
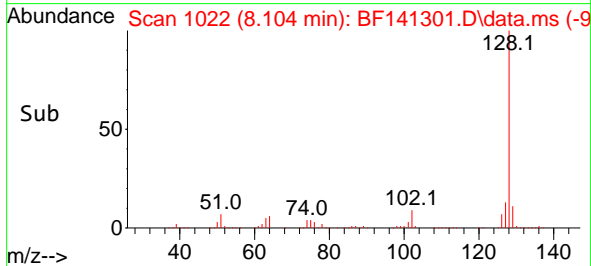
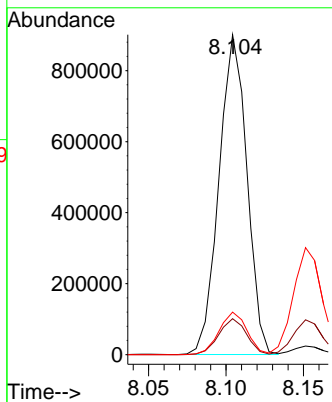
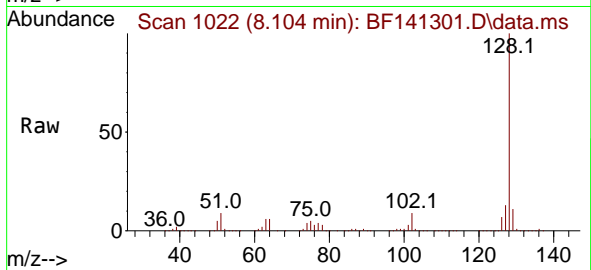




#31
 Naphthalene
 Concen: 37.109 ng
 RT: 8.104 min Scan# 10
 Delta R.T. -0.006 min
 Lab File: BF141301.D
 Acq: 30 Jan 2025 08:54

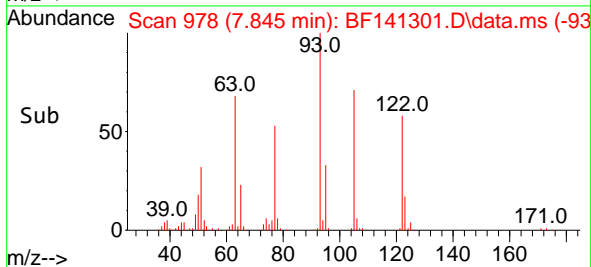
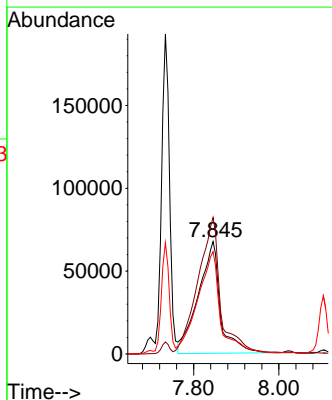
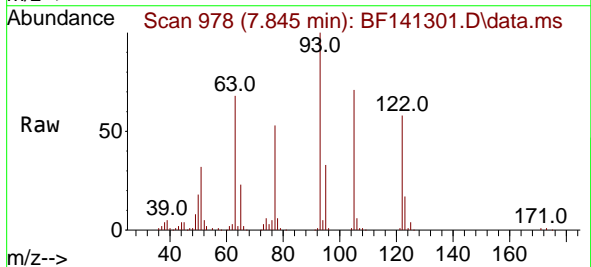
Instrument : BNA_F
 ClientSampleId : SSTDCCC040

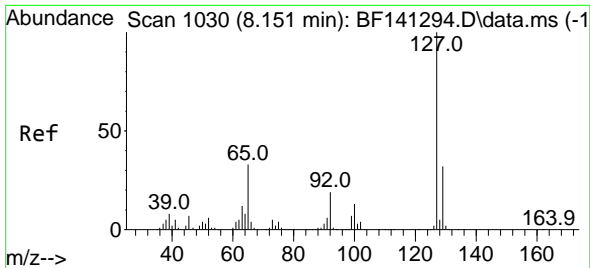
Tgt Ion:128 Resp: 1129129
 Ion Ratio Lower Upper
 128 100
 129 11.2 8.9 13.3
 127 13.3 10.6 15.8



#32
 Benzoic acid
 Concen: 38.870 ng
 RT: 7.845 min Scan# 978
 Delta R.T. -0.035 min
 Lab File: BF141301.D
 Acq: 30 Jan 2025 08:54

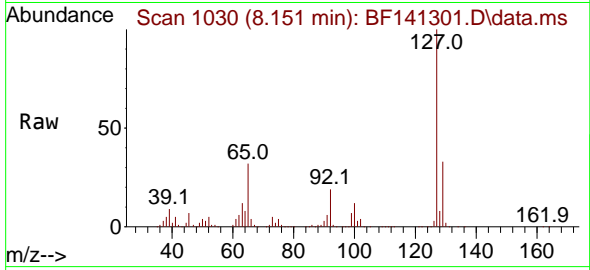
Tgt Ion:122 Resp: 242870
 Ion Ratio Lower Upper
 122 100
 105 121.5 103.4 143.4
 77 91.1 70.9 110.9





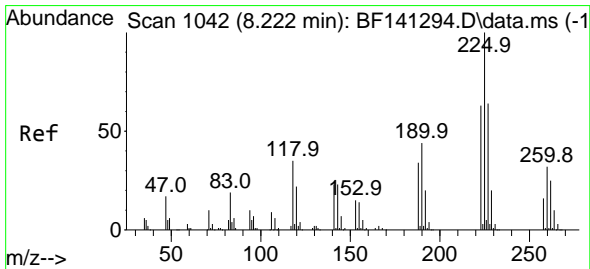
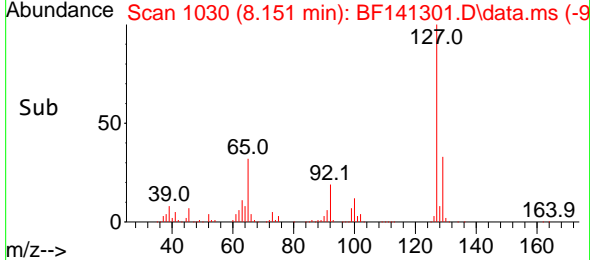
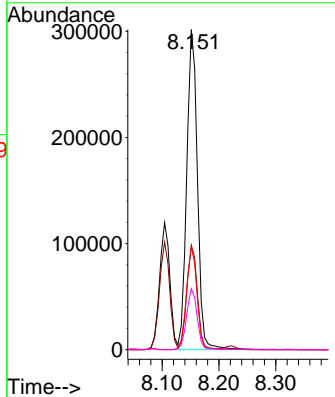
#33
 4-Chloroaniline
 Concen: 38.063 ng
 RT: 8.151 min Scan# 1030
 Delta R.T. -0.006 min
 Lab File: BF141301.D
 Acq: 30 Jan 2025 08:54

Instrument : BNA_F
 ClientSampleId : SSTDCCC040

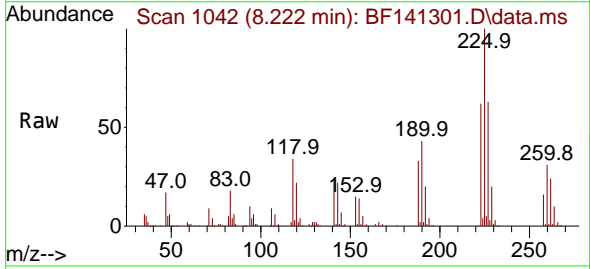


Tgt Ion:127 Resp: 392735

Ion	Ratio	Lower	Upper
127	100		
129	32.6	25.7	38.5
65	32.2	26.4	39.6
92	19.1	15.1	22.7

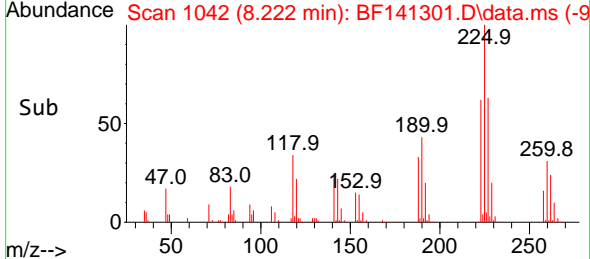
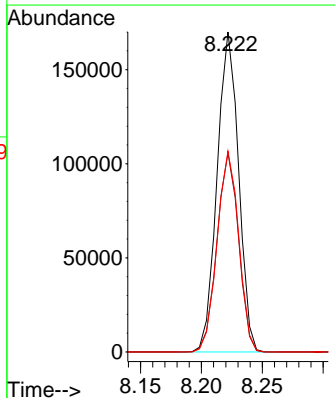


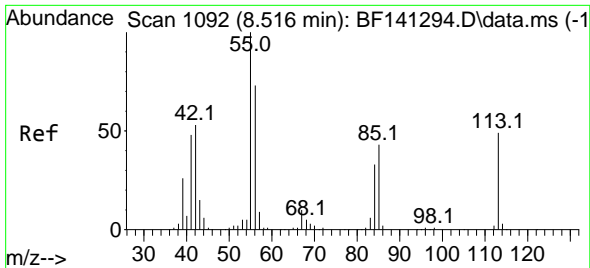
#34
 Hexachlorobutadiene
 Concen: 37.404 ng
 RT: 8.222 min Scan# 1042
 Delta R.T. -0.000 min
 Lab File: BF141301.D
 Acq: 30 Jan 2025 08:54



Tgt Ion:225 Resp: 208442

Ion	Ratio	Lower	Upper
225	100		
223	62.2	50.4	75.6
227	62.7	51.3	76.9

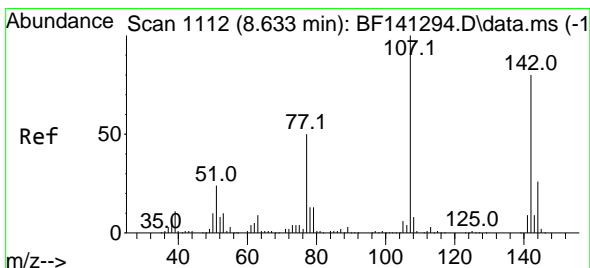
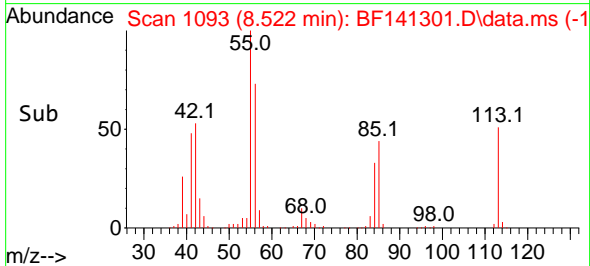
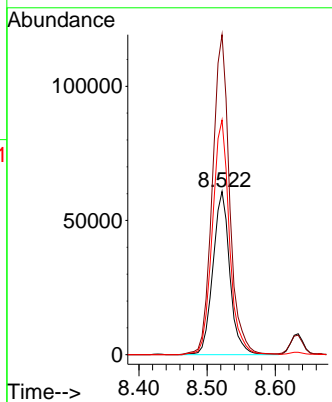
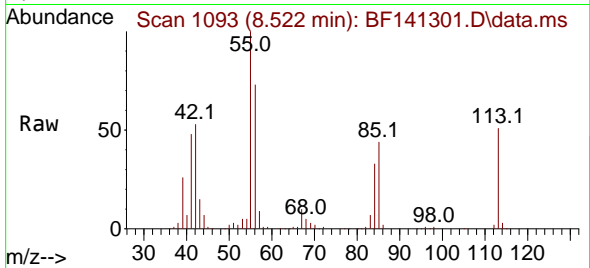




#35
 Caprolactam
 Concen: 38.592 ng
 RT: 8.522 min Scan# 1093
 Delta R.T. -0.024 min
 Lab File: BF141301.D
 Acq: 30 Jan 2025 08:54

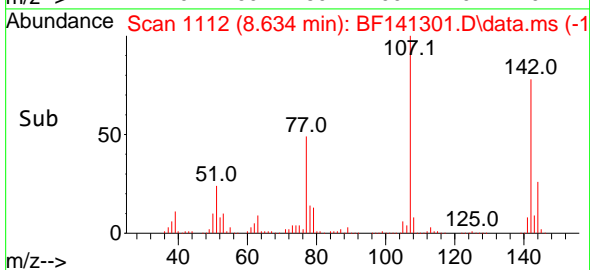
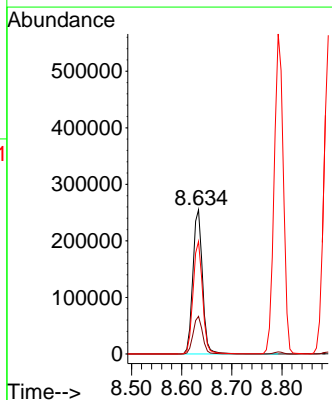
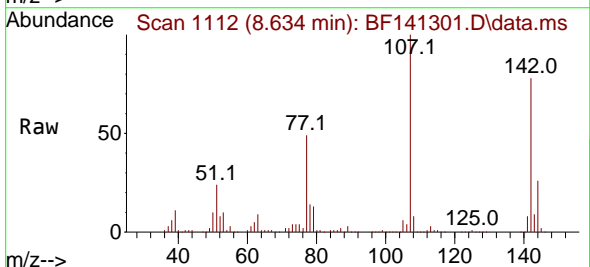
Instrument :
 BNA_F
 ClientSampleId :
 SSTDCCC040

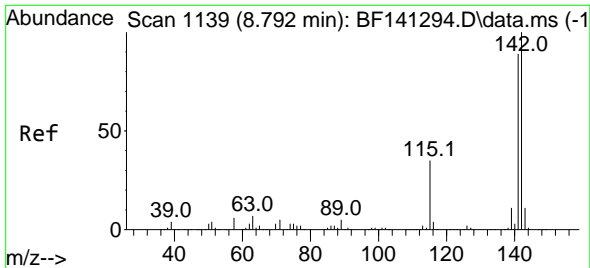
Tgt Ion:113 Resp: 104874
 Ion Ratio Lower Upper
 113 100
 55 196.0 182.9 222.9
 56 143.8 127.9 167.9



#36
 4-Chloro-3-methylphenol
 Concen: 38.080 ng
 RT: 8.634 min Scan# 1112
 Delta R.T. -0.006 min
 Lab File: BF141301.D
 Acq: 30 Jan 2025 08:54

Tgt Ion:107 Resp: 339876
 Ion Ratio Lower Upper
 107 100
 144 26.1 20.7 31.1
 142 78.0 63.8 95.8

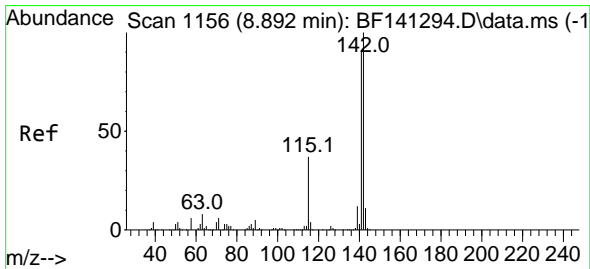
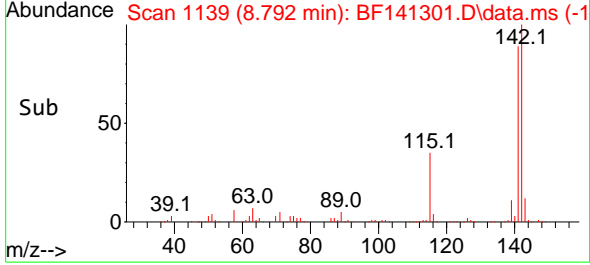
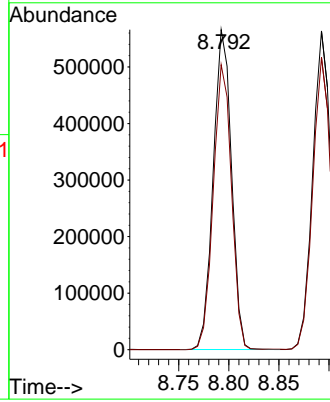
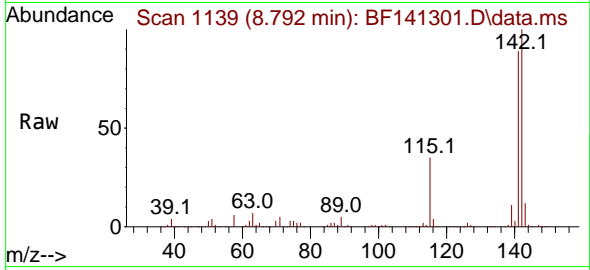




#37
 2-Methylnaphthalene
 Concen: 37.063 ng
 RT: 8.792 min Scan# 1139
 Delta R.T. -0.006 min
 Lab File: BF141301.D
 Acq: 30 Jan 2025 08:54

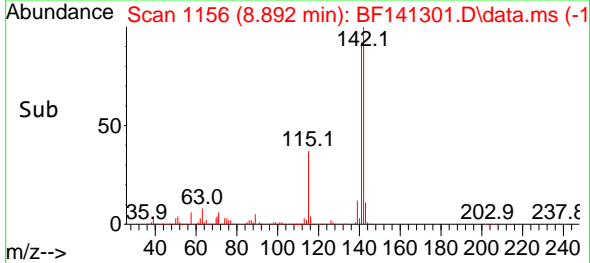
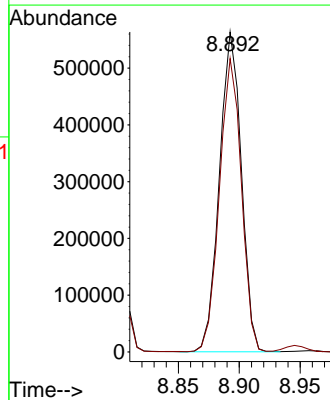
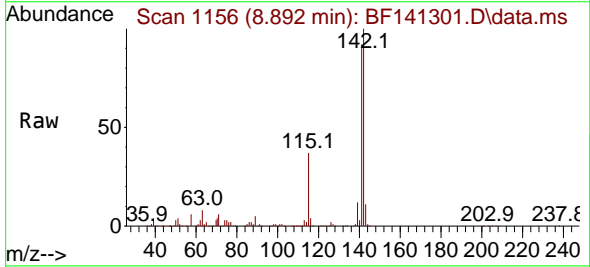
Instrument : BNA_F
 ClientSampleId : SSTDCCC040

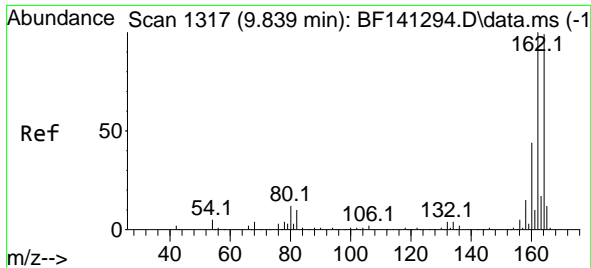
Tgt Ion:142 Resp: 716771
 Ion Ratio Lower Upper
 142 100
 141 89.1 71.3 106.9



#38
 1-Methylnaphthalene
 Concen: 37.152 ng
 RT: 8.892 min Scan# 1156
 Delta R.T. -0.006 min
 Lab File: BF141301.D
 Acq: 30 Jan 2025 08:54

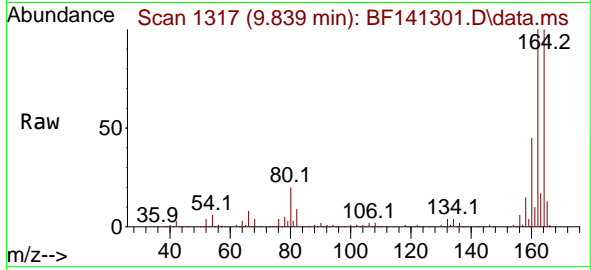
Tgt Ion:142 Resp: 705777
 Ion Ratio Lower Upper
 142 100
 141 91.7 73.2 109.8



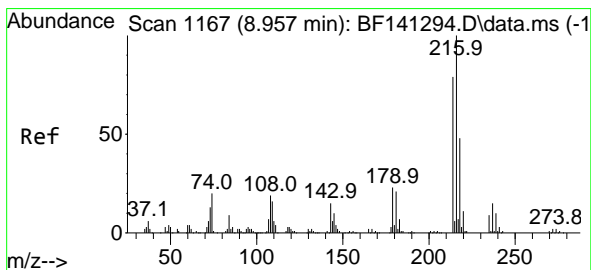
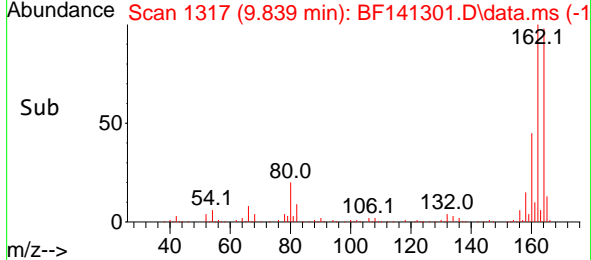
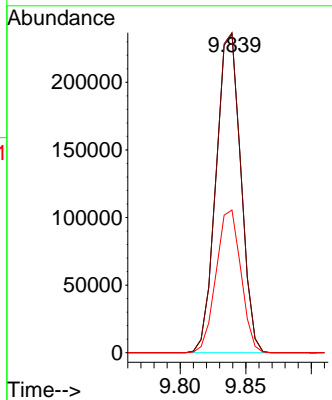


#39
 Acenaphthene-d10
 Concen: 20.000 ng
 RT: 9.839 min Scan# 1117
 Delta R.T. -0.000 min
 Lab File: BF141301.D
 Acq: 30 Jan 2025 08:54

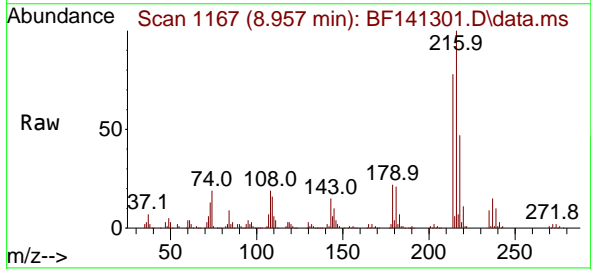
Instrument : BNA_F
 ClientSampleId : SSTDCCC040



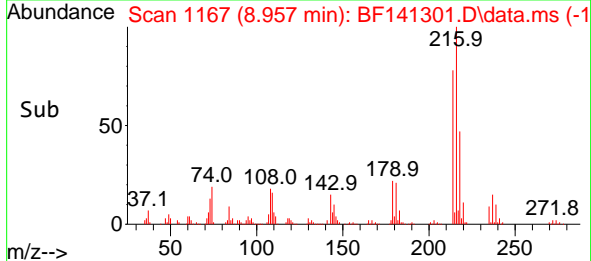
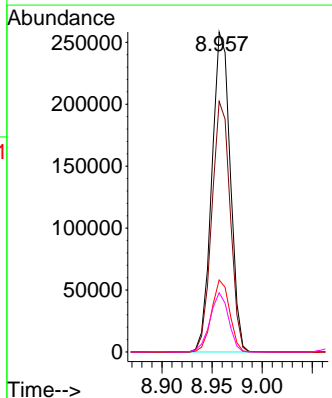
Tgt Ion:164 Resp: 308835
 Ion Ratio Lower Upper
 164 100
 162 100.3 80.6 121.0
 160 44.7 35.8 53.6

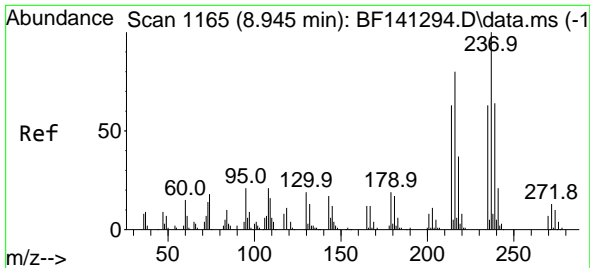


#40
 1,2,4,5-Tetrachlorobenzene
 Concen: 37.450 ng
 RT: 8.957 min Scan# 1167
 Delta R.T. -0.006 min
 Lab File: BF141301.D
 Acq: 30 Jan 2025 08:54



Tgt Ion:216 Resp: 329038
 Ion Ratio Lower Upper
 216 100
 214 78.1 63.2 94.8
 179 22.1 17.8 26.8
 108 18.7 15.0 22.6



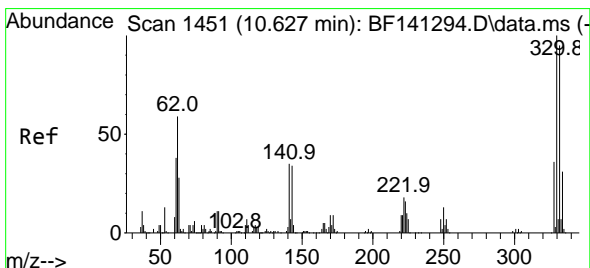
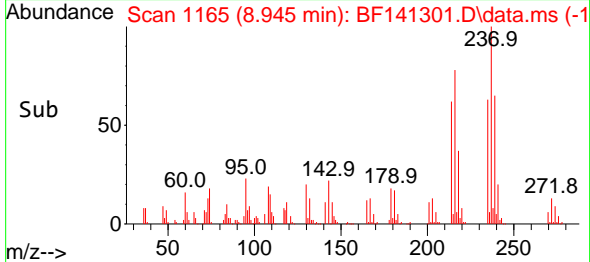
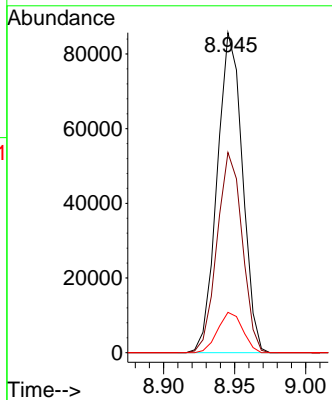
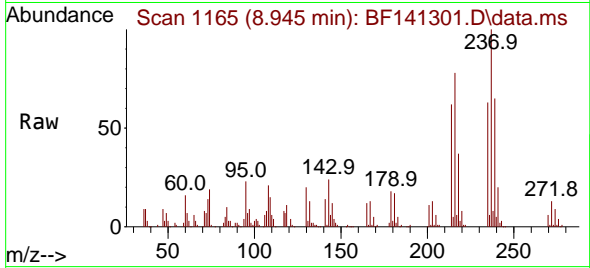


#41
 Hexachlorocyclopentadiene
 Concen: 40.862 ng
 RT: 8.945 min Scan# 1165
 Delta R.T. -0.006 min
 Lab File: BF141301.D
 Acq: 30 Jan 2025 08:54

Instrument :
 BNA_F
 ClientSampleId :
 SSTDCCC040

Tgt Ion:237 Resp: 106026

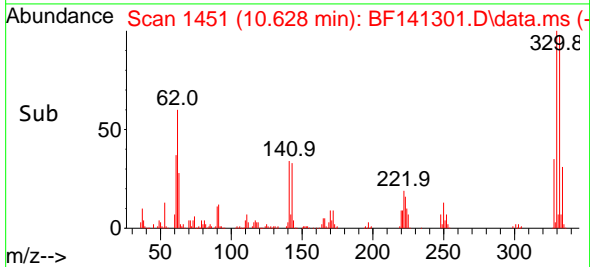
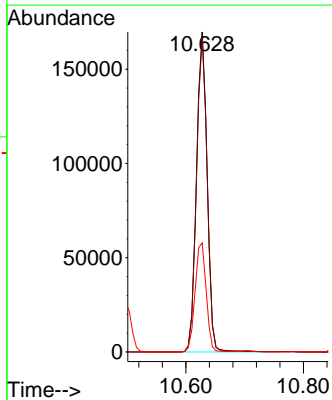
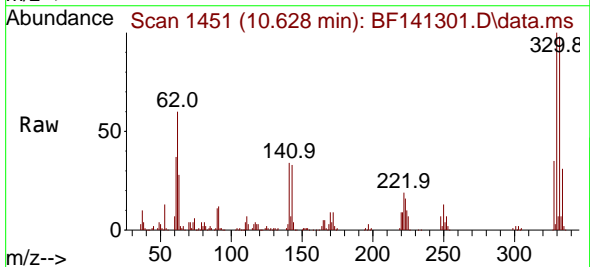
Ion	Ratio	Lower	Upper
237	100		
235	62.5	42.9	82.9
272	12.6	0.0	32.8

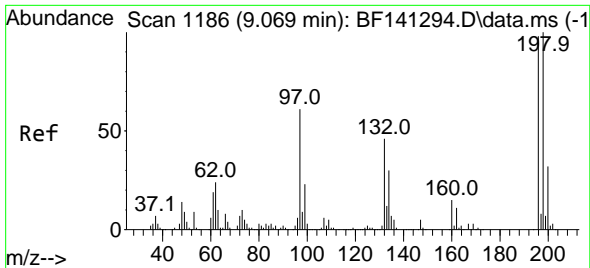


#42
 2,4,6-Tribromophenol
 Concen: 75.804 ng
 RT: 10.628 min Scan# 1451
 Delta R.T. -0.006 min
 Lab File: BF141301.D
 Acq: 30 Jan 2025 08:54

Tgt Ion:330 Resp: 214625

Ion	Ratio	Lower	Upper
330	100		
332	98.0	76.1	114.1
141	35.4	28.8	43.2



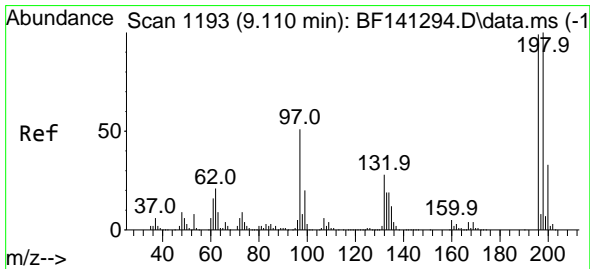
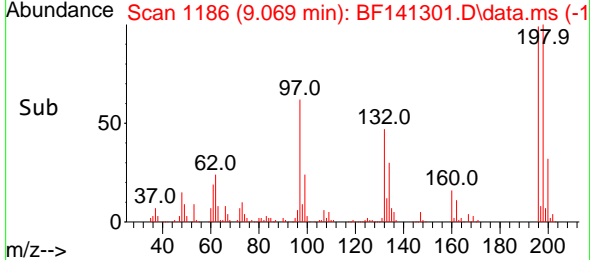
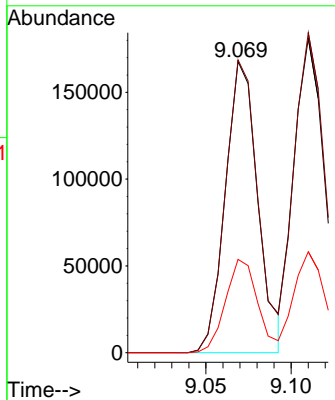
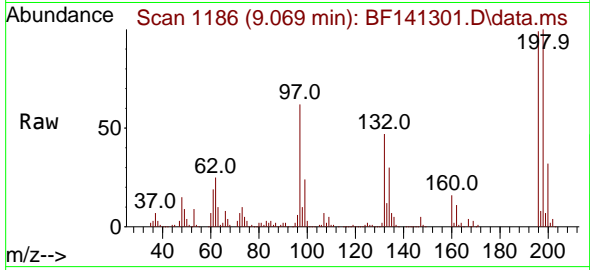


#43
 2,4,6-Trichlorophenol
 Concen: 38.755 ng
 RT: 9.069 min Scan# 1186
 Delta R.T. -0.006 min
 Lab File: BF141301.D
 Acq: 30 Jan 2025 08:54

Instrument : BNA_F
 ClientSampleId : SSTDCCC040

Tgt Ion:196 Resp: 222870

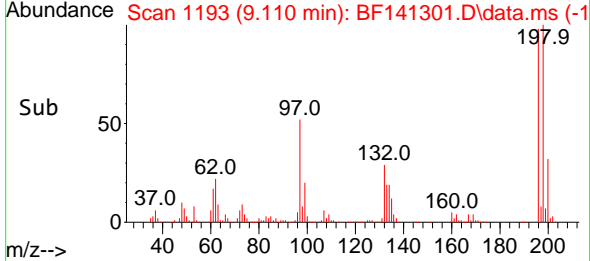
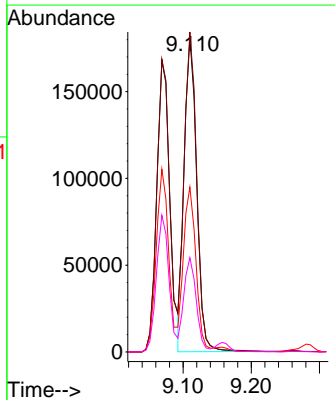
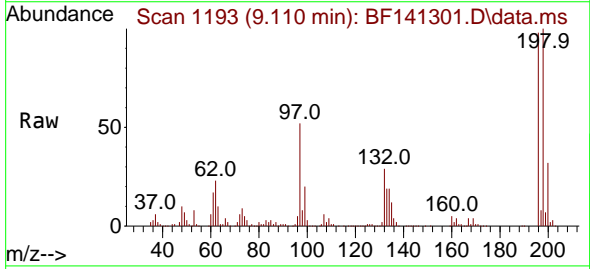
Ion	Ratio	Lower	Upper
196	100		
198	100.5	81.8	122.6
200	32.0	26.3	39.5

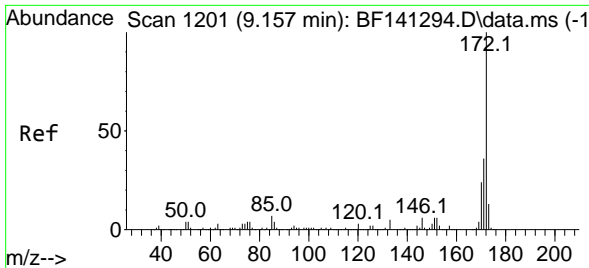


#44
 2,4,5-Trichlorophenol
 Concen: 36.919 ng
 RT: 9.110 min Scan# 1193
 Delta R.T. -0.006 min
 Lab File: BF141301.D
 Acq: 30 Jan 2025 08:54

Tgt Ion:196 Resp: 231078

Ion	Ratio	Lower	Upper
196	100		
198	101.8	80.5	120.7
97	52.4	42.8	64.2
132	30.0	23.5	35.3



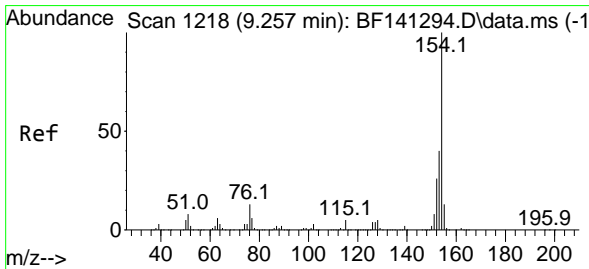
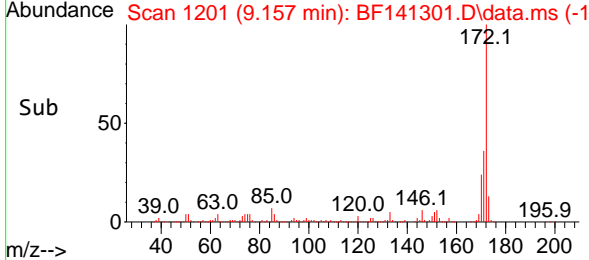
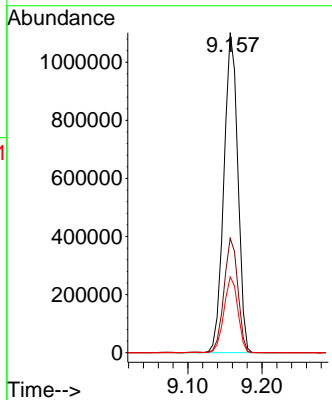
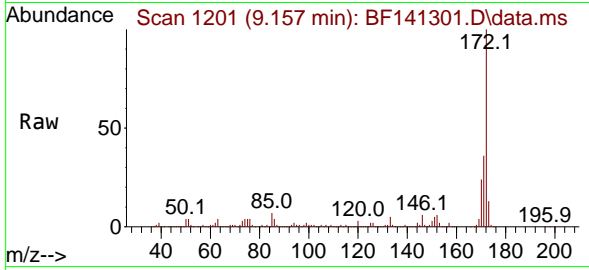


#45
 2-Fluorobiphenyl
 Concen: 71.765 ng
 RT: 9.157 min Scan# 11
 Delta R.T. -0.006 min
 Lab File: BF141301.D
 Acq: 30 Jan 2025 08:54

Instrument : BNA_F
 ClientSampleId : SSTDCCC040

Tgt Ion:172 Resp: 1439957

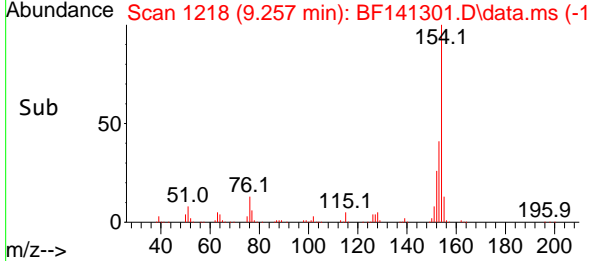
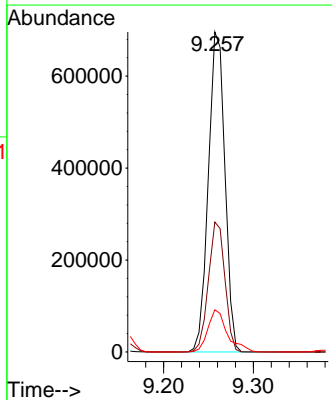
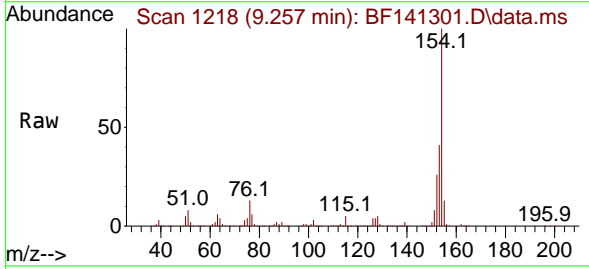
Ion	Ratio	Lower	Upper
172	100		
171	35.8	28.8	43.2
170	23.7	19.0	28.6

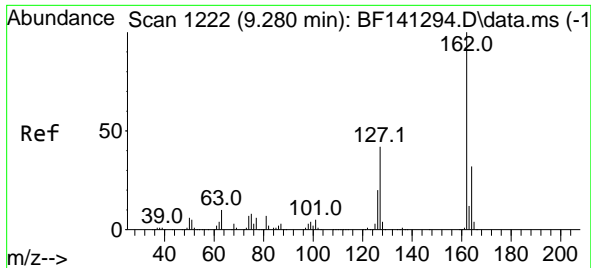


#46
 1,1'-Biphenyl
 Concen: 37.042 ng
 RT: 9.257 min Scan# 1218
 Delta R.T. -0.006 min
 Lab File: BF141301.D
 Acq: 30 Jan 2025 08:54

Tgt Ion:154 Resp: 892160

Ion	Ratio	Lower	Upper
154	100		
153	40.6	20.0	60.0
76	13.2	0.0	32.8



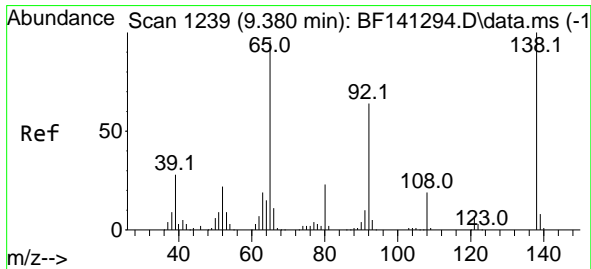
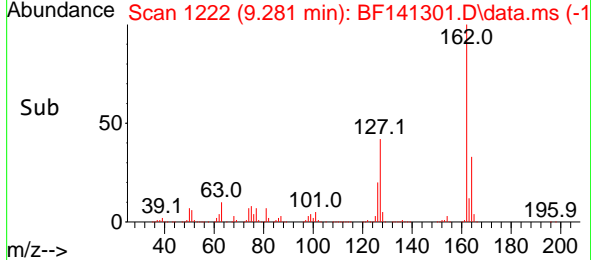
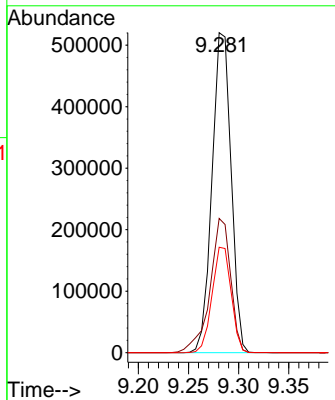
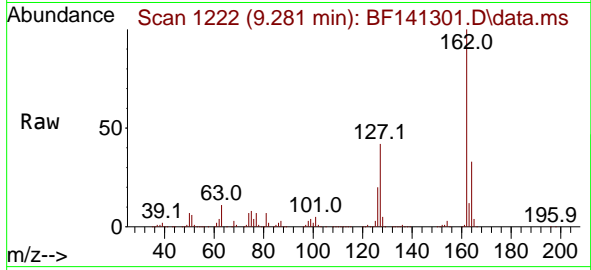


#47
 2-Chloronaphthalene
 Concen: 36.699 ng
 RT: 9.281 min Scan# 11
 Delta R.T. -0.006 min
 Lab File: BF141301.D
 Acq: 30 Jan 2025 08:54

Instrument : BNA_F
 ClientSampleId : SSTDCCC040

Tgt Ion:162 Resp: 688957

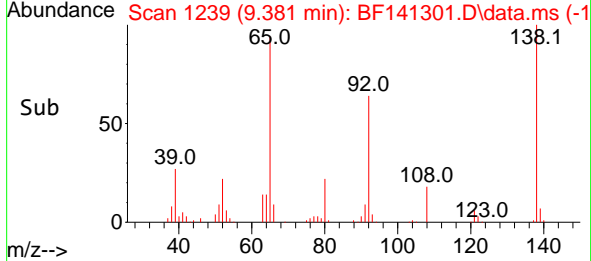
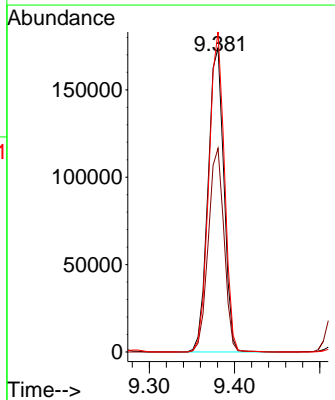
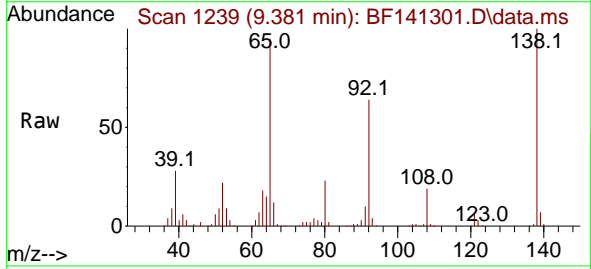
Ion	Ratio	Lower	Upper
162	100		
127	42.0	33.7	50.5
164	33.0	25.9	38.9

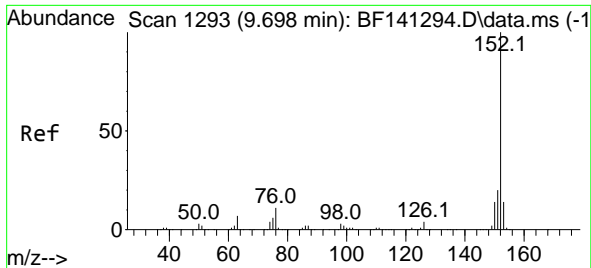


#48
 2-Nitroaniline
 Concen: 38.111 ng
 RT: 9.381 min Scan# 1239
 Delta R.T. -0.000 min
 Lab File: BF141301.D
 Acq: 30 Jan 2025 08:54

Tgt Ion: 65 Resp: 225042

Ion	Ratio	Lower	Upper
65	100		
92	67.0	53.3	79.9
138	105.2	83.6	125.4





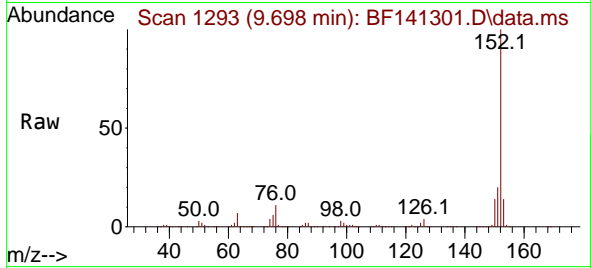
#49
 Acenaphthylene
 Concen: 37.463 ng
 RT: 9.698 min Scan# 11
 Delta R.T. -0.006 min
 Lab File: BF141301.D
 Acq: 30 Jan 2025 08:54

Instrument :

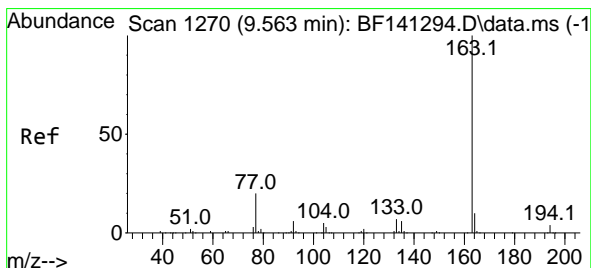
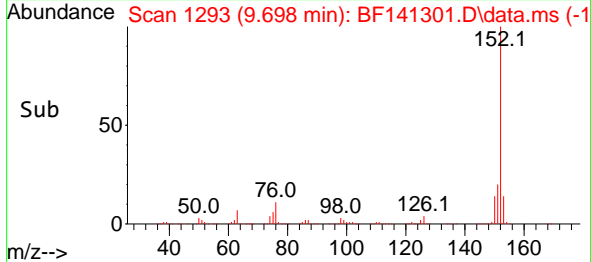
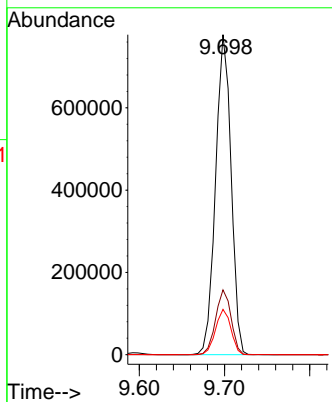
BNA_F

ClientSampleId :

SSTDCCC040

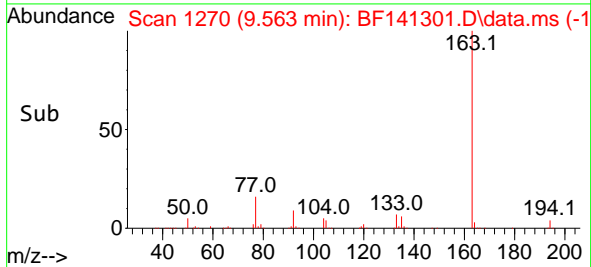
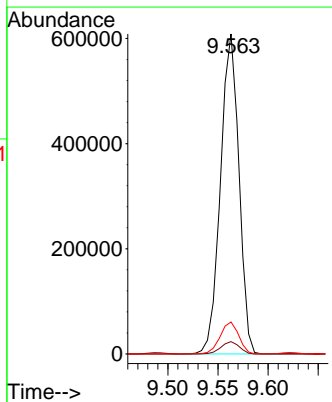
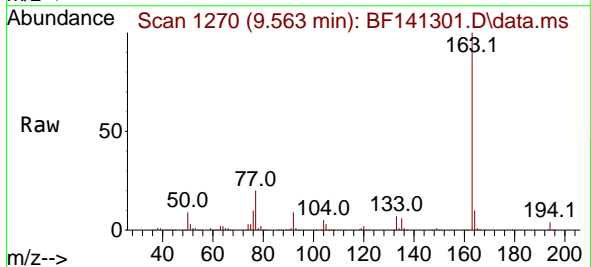


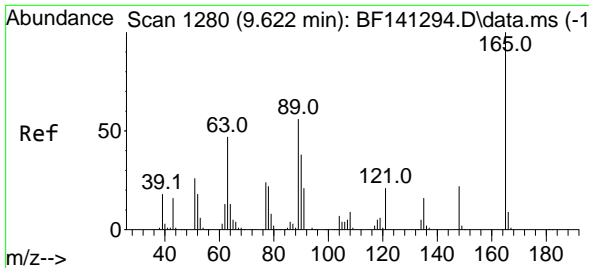
Tgt Ion:152 Resp: 984505
 Ion Ratio Lower Upper
 152 100
 151 20.2 16.2 24.2
 153 14.2 11.0 16.6



#50
 Dimethylphthalate
 Concen: 37.298 ng
 RT: 9.563 min Scan# 1270
 Delta R.T. -0.006 min
 Lab File: BF141301.D
 Acq: 30 Jan 2025 08:54

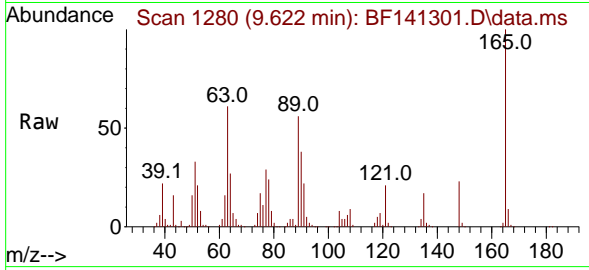
Tgt Ion:163 Resp: 777984
 Ion Ratio Lower Upper
 163 100
 194 3.8 3.0 4.6
 164 10.0 8.0 12.0



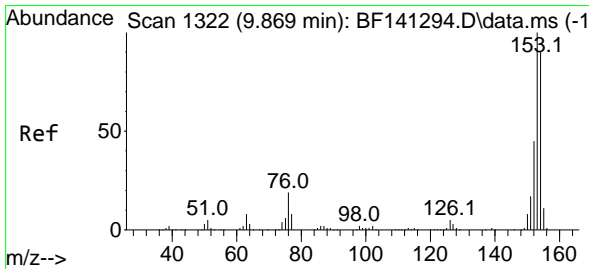
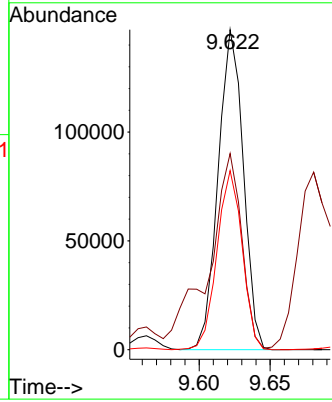
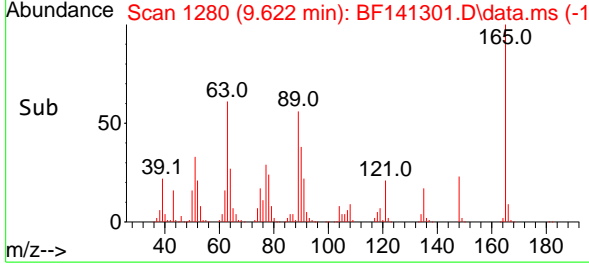


#51
 2,6-Dinitrotoluene
 Concen: 37.386 ng
 RT: 9.622 min Scan# 11
 Delta R.T. -0.006 min
 Lab File: BF141301.D
 Acq: 30 Jan 2025 08:54

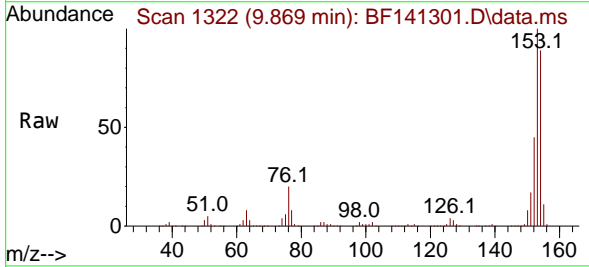
Instrument :
 BNA_F
 ClientSampleId :
 SSTDCCC040



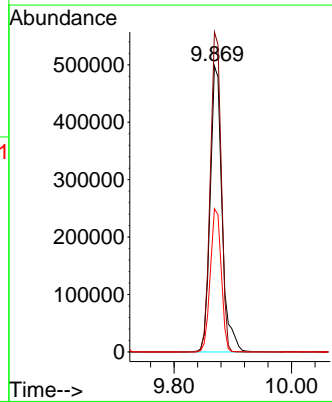
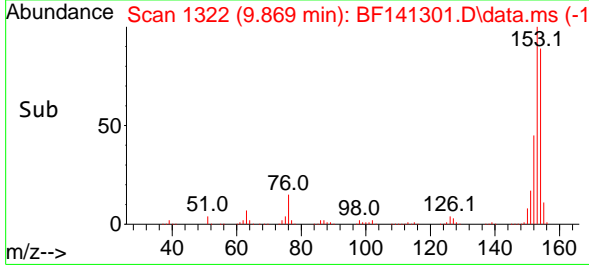
Tgt Ion:165 Resp: 181065
 Ion Ratio Lower Upper
 165 100
 63 61.3 48.1 72.1
 89 56.0 44.9 67.3

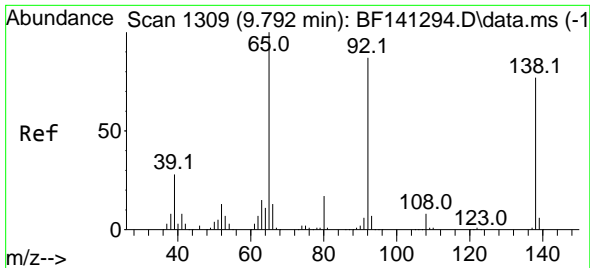


#52
 Acenaphthene
 Concen: 37.171 ng
 RT: 9.869 min Scan# 1322
 Delta R.T. -0.006 min
 Lab File: BF141301.D
 Acq: 30 Jan 2025 08:54



Tgt Ion:154 Resp: 697843
 Ion Ratio Lower Upper
 154 100
 153 111.9 89.0 133.4
 152 50.1 40.2 60.4



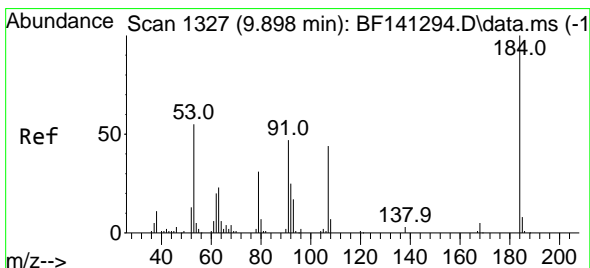
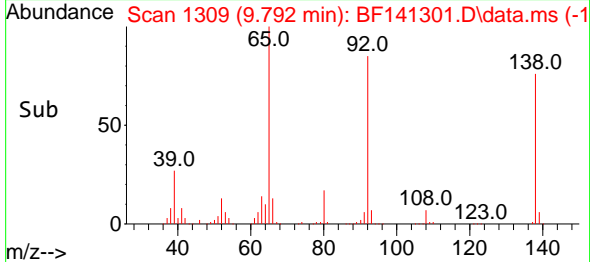
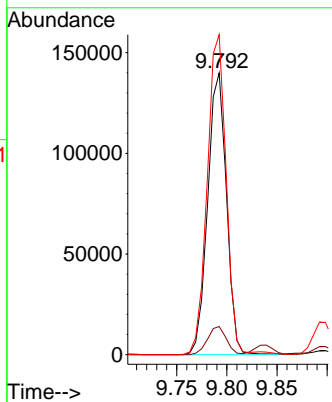
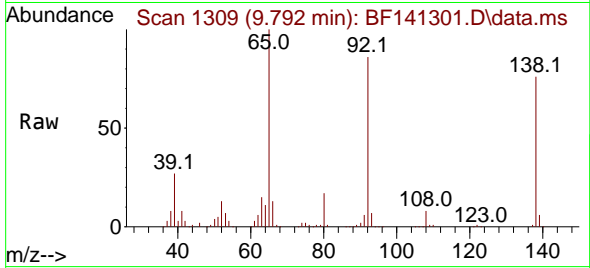


#53
 3-Nitroaniline
 Concen: 38.456 ng
 RT: 9.792 min Scan# 1309
 Delta R.T. -0.006 min
 Lab File: BF141301.D
 Acq: 30 Jan 2025 08:54

Instrument : BNA_F
 ClientSampleId : SSTDCCC040

Tgt Ion:138 Resp: 182543

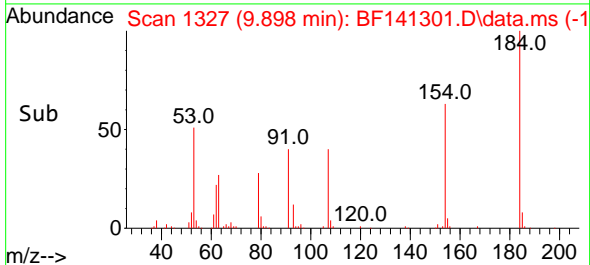
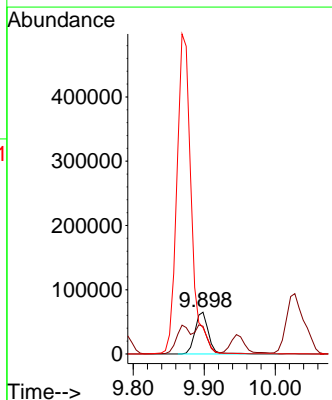
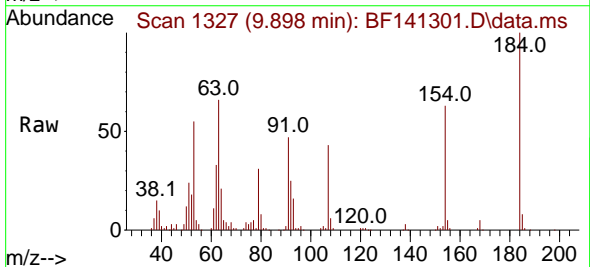
Ion	Ratio	Lower	Upper
138	100		
108	10.0	8.6	12.8
92	113.6	91.0	136.6

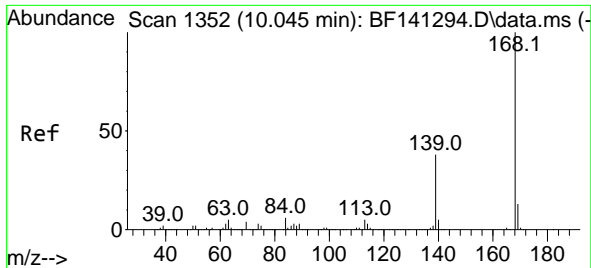


#54
 2,4-Dinitrophenol
 Concen: 38.081 ng
 RT: 9.898 min Scan# 1327
 Delta R.T. -0.006 min
 Lab File: BF141301.D
 Acq: 30 Jan 2025 08:54

Tgt Ion:184 Resp: 85734

Ion	Ratio	Lower	Upper
184	100		
63	66.0	54.1	81.1
154	63.0	50.7	76.1



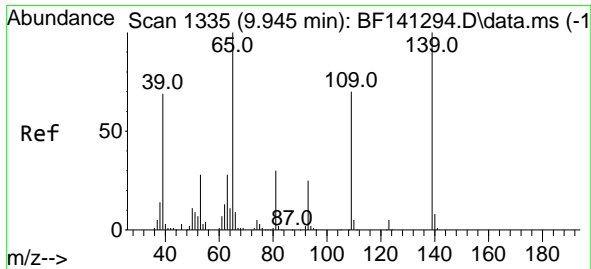
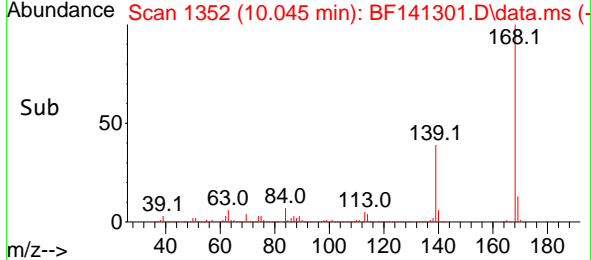
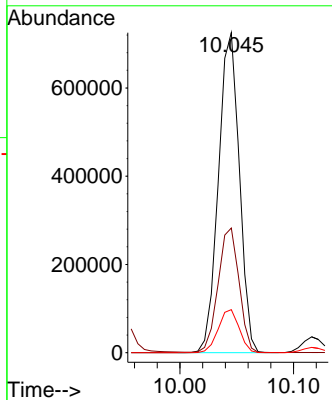
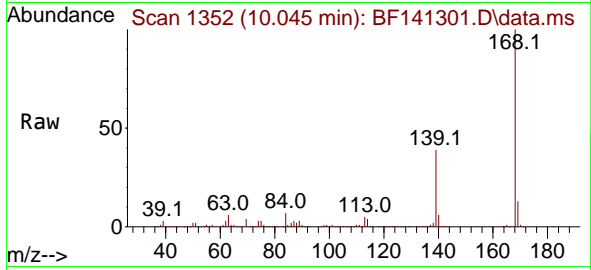


#55
 Dibenzofuran
 Concen: 36.923 ng
 RT: 10.045 min Scan# 11
 Delta R.T. -0.000 min
 Lab File: BF141301.D
 Acq: 30 Jan 2025 08:54

Instrument : BNA_F
 ClientSampleId : SSTDCCC040

Tgt Ion:168 Resp: 927873

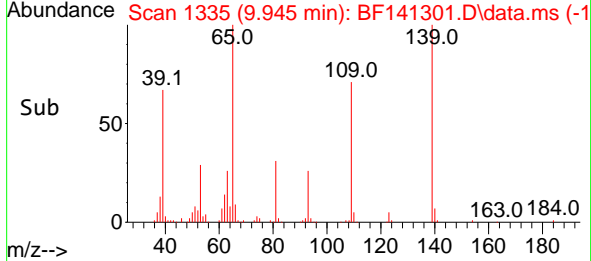
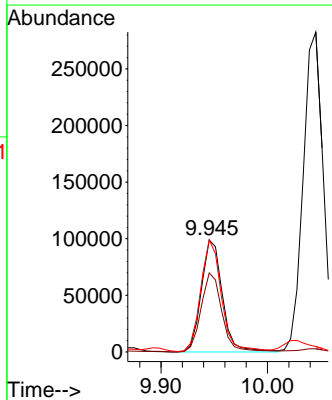
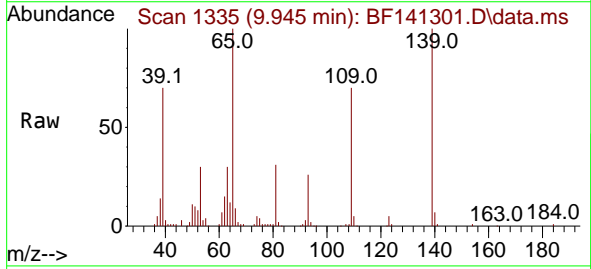
Ion	Ratio	Lower	Upper
168	100		
139	39.0	30.6	46.0
169	13.4	10.8	16.2

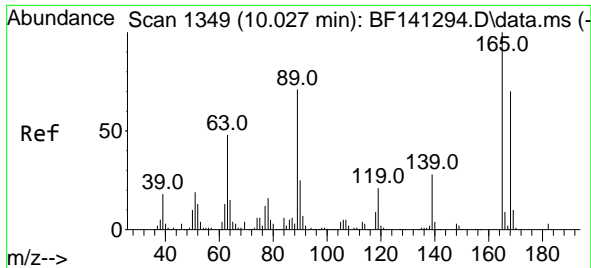


#56
 4-Nitrophenol
 Concen: 39.302 ng
 RT: 9.945 min Scan# 1335
 Delta R.T. -0.012 min
 Lab File: BF141301.D
 Acq: 30 Jan 2025 08:54

Tgt Ion:139 Resp: 136436

Ion	Ratio	Lower	Upper
139	100		
109	70.6	50.2	90.2
65	100.1	80.6	120.6





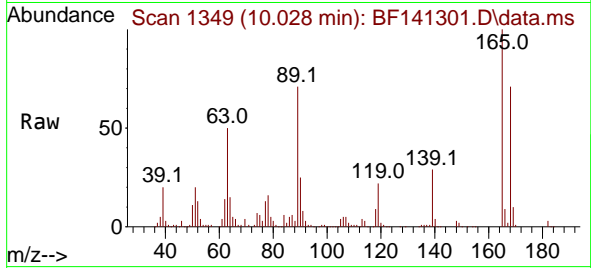
#57
 2,4-Dinitrotoluene
 Concen: 38.142 ng
 RT: 10.028 min Scan# 11
 Delta R.T. -0.006 min
 Lab File: BF141301.D
 Acq: 30 Jan 2025 08:54

Instrument :

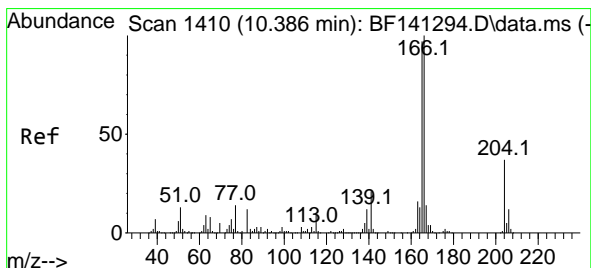
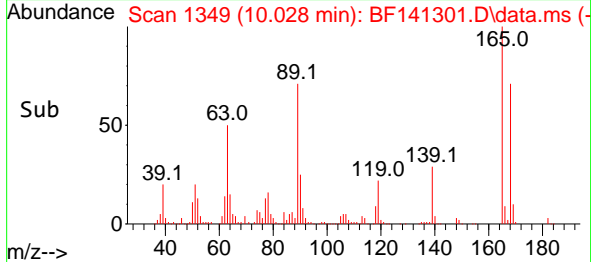
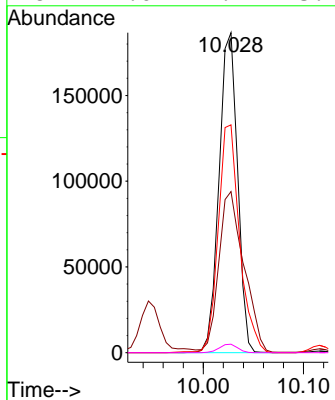
BNA_F

ClientSampleId :

SSTDCCC040

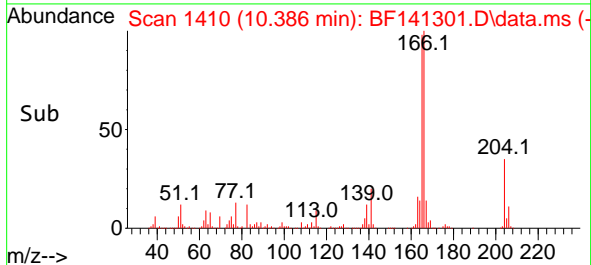
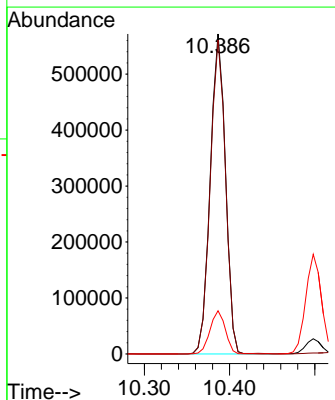
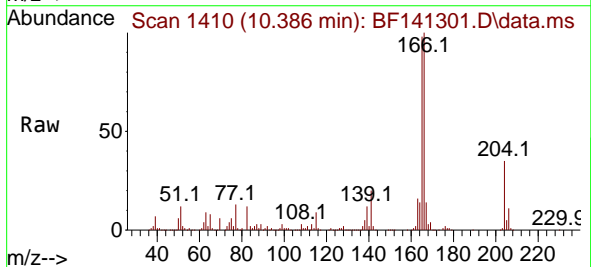


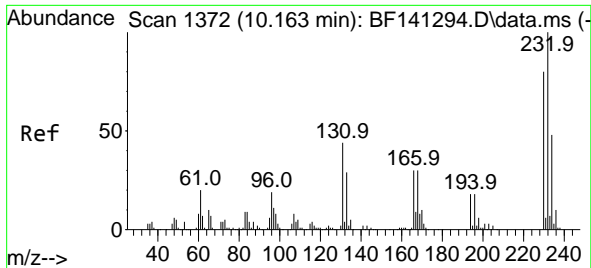
Tgt Ion:165 Resp: 239168
 Ion Ratio Lower Upper
 165 100
 63 50.4 39.2 58.8
 89 71.2 56.9 85.3
 182 2.6 2.2 3.2



#58
 Fluorene
 Concen: 36.459 ng
 RT: 10.386 min Scan# 1410
 Delta R.T. -0.006 min
 Lab File: BF141301.D
 Acq: 30 Jan 2025 08:54

Tgt Ion:166 Resp: 710687
 Ion Ratio Lower Upper
 166 100
 165 98.1 77.5 116.3
 167 13.5 10.9 16.3



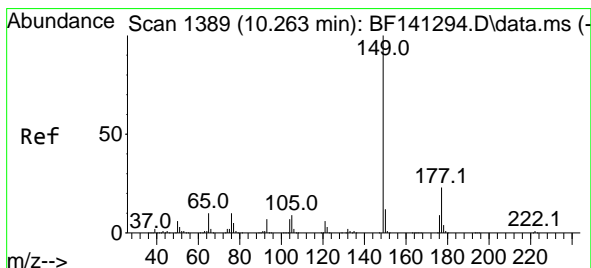
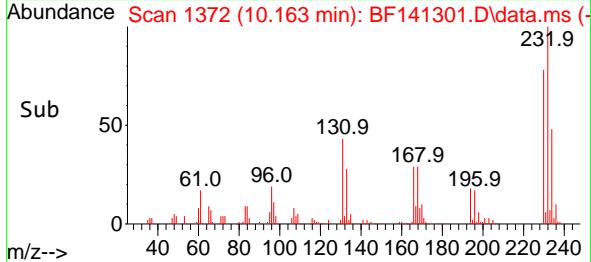
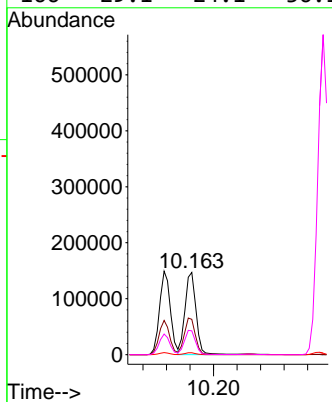
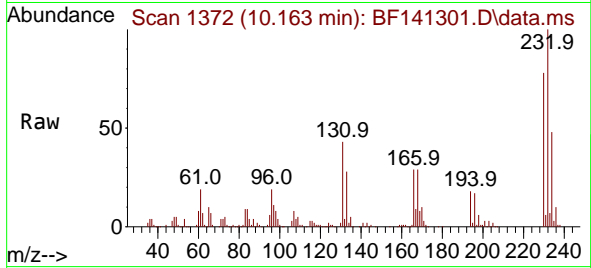


#59
 2,3,4,6-Tetrachlorophenol
 Concen: 39.118 ng
 RT: 10.163 min Scan# 1372
 Delta R.T. -0.000 min
 Lab File: BF141301.D
 Acq: 30 Jan 2025 08:54

Instrument :
 BNA_F
 ClientSampleId :
 SSTDCCC040

Tgt Ion:232 Resp: 192623

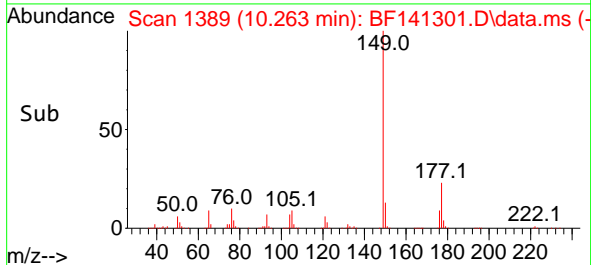
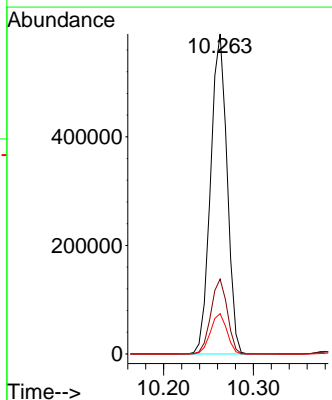
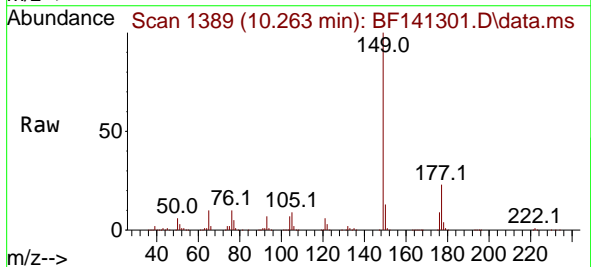
Ion	Ratio	Lower	Upper
232	100		
131	44.4	36.4	54.6
130	2.3	1.9	2.9
166	29.1	24.1	36.1

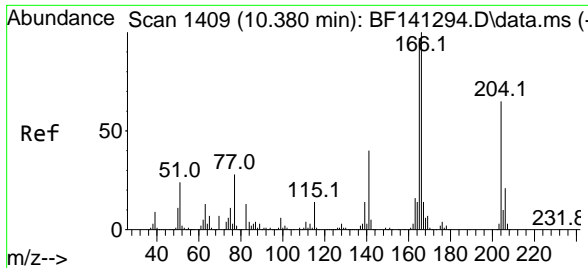


#60
 Diethylphthalate
 Concen: 37.157 ng
 RT: 10.263 min Scan# 1389
 Delta R.T. -0.006 min
 Lab File: BF141301.D
 Acq: 30 Jan 2025 08:54

Tgt Ion:149 Resp: 751491

Ion	Ratio	Lower	Upper
149	100		
177	23.4	18.5	27.7
150	12.6	10.0	15.0



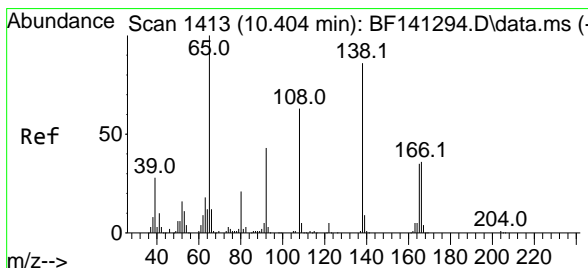
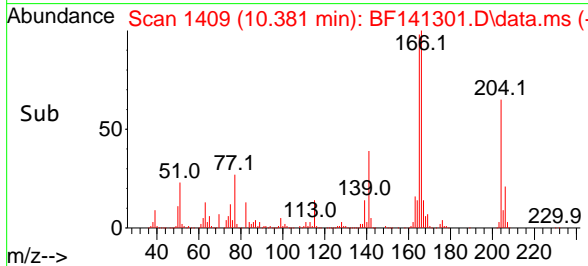
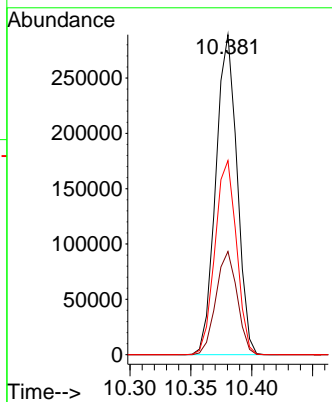
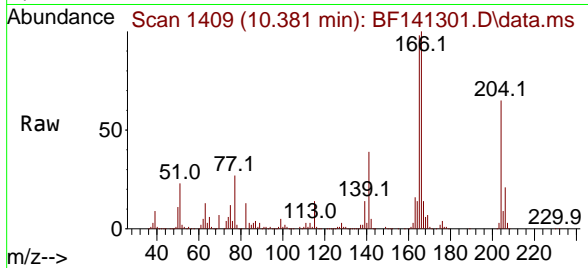


#61
 4-Chlorophenyl-phenylether
 Concen: 36.875 ng
 RT: 10.381 min Scan# 1409
 Delta R.T. -0.000 min
 Lab File: BF141301.D
 Acq: 30 Jan 2025 08:54

Instrument :
 BNA_F
 ClientSampleId :
 SSTDCCC040

Tgt Ion:204 Resp: 351110

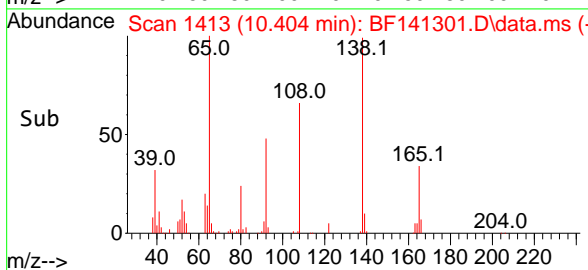
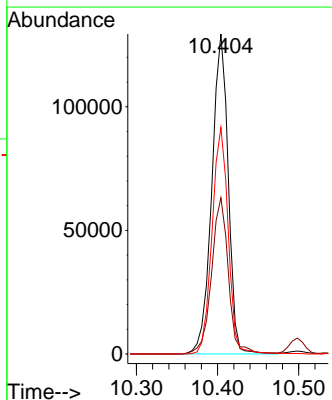
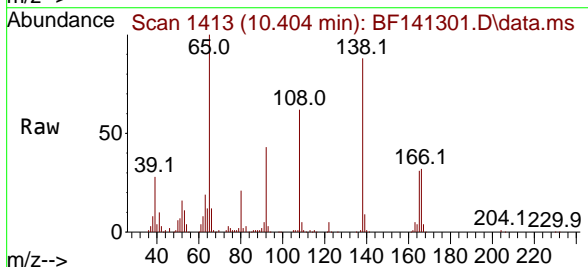
Ion	Ratio	Lower	Upper
204	100		
206	32.2	25.9	38.9
141	60.7	49.5	74.3

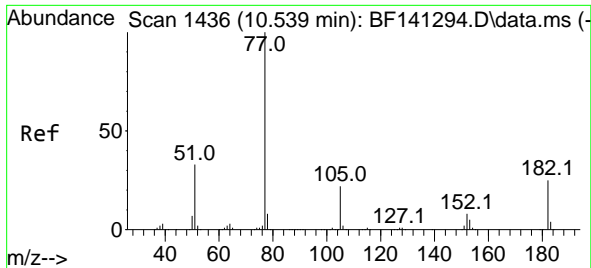


#62
 4-Nitroaniline
 Concen: 38.976 ng
 RT: 10.404 min Scan# 1413
 Delta R.T. -0.012 min
 Lab File: BF141301.D
 Acq: 30 Jan 2025 08:54

Tgt Ion:138 Resp: 181893

Ion	Ratio	Lower	Upper
138	100		
92	48.8	30.1	70.1
108	70.8	53.1	93.1

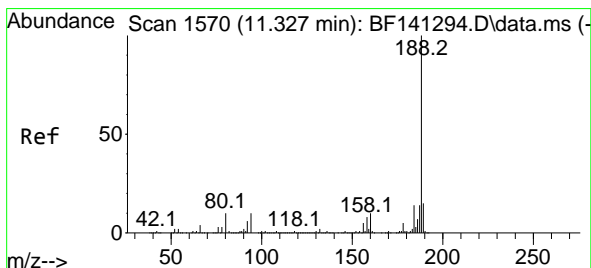
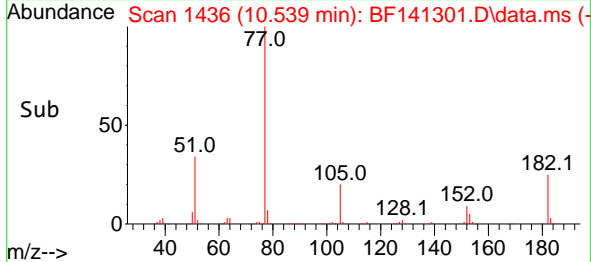
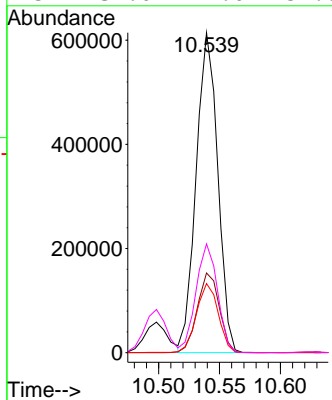
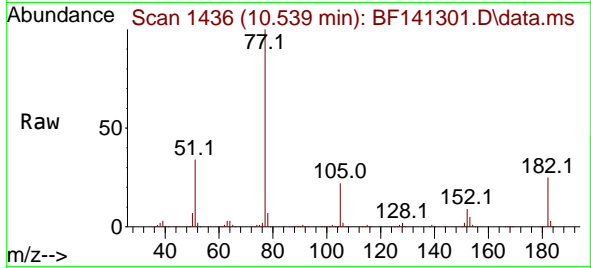




#63
 Azobenzene
 Concen: 37.363 ng
 RT: 10.539 min Scan# 14
 Delta R.T. -0.006 min
 Lab File: BF141301.D
 Acq: 30 Jan 2025 08:54

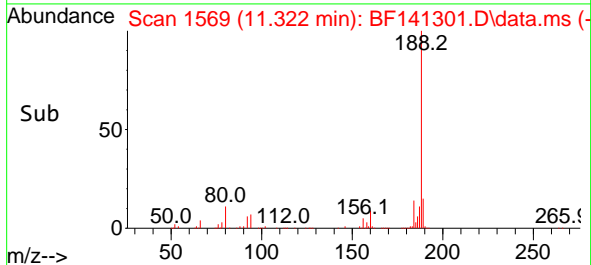
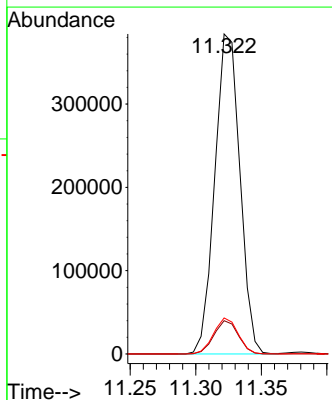
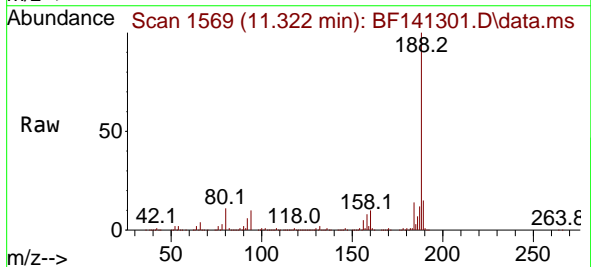
Instrument : BNA_F
 Client Sample Id : SSTDCCC040

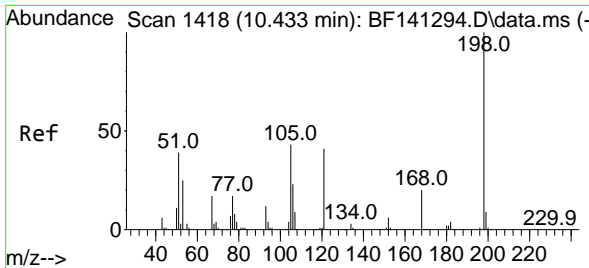
Tgt Ion	Resp	Lower	Upper
77	100		
182	24.9	5.1	45.1
105	21.6	1.8	41.8
51	34.0	14.0	54.0



#64
 Phenanthrene-d10
 Concen: 20.000 ng
 RT: 11.322 min Scan# 1569
 Delta R.T. -0.006 min
 Lab File: BF141301.D
 Acq: 30 Jan 2025 08:54

Tgt Ion	Resp	Lower	Upper
188	100		
94	10.4	7.8	11.6
80	11.2	8.2	12.4



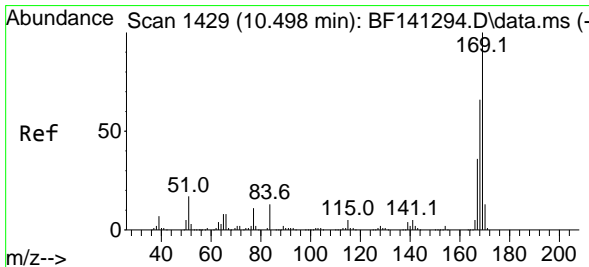
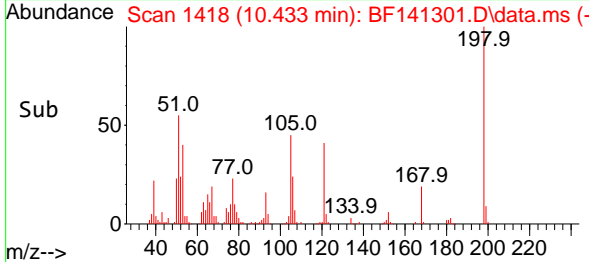
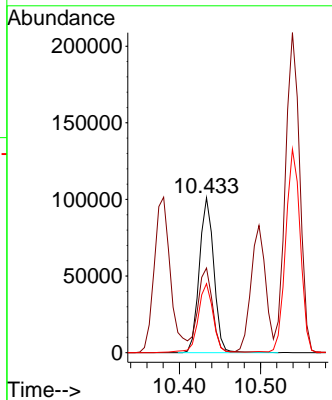
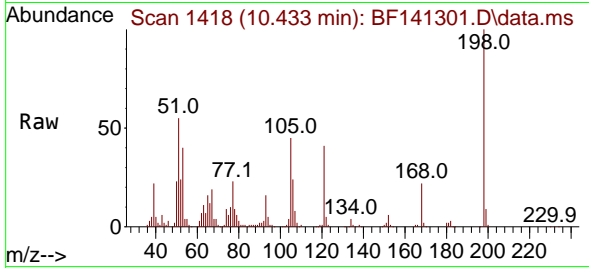


#65
 4,6-Dinitro-2-methylphenol
 Concen: 41.499 ng
 RT: 10.433 min Scan# 1418
 Delta R.T. -0.006 min
 Lab File: BF141301.D
 Acq: 30 Jan 2025 08:54

Instrument :
 BNA_F
 ClientSampleId :
 SSTDCCC040

Tgt Ion:198 Resp: 125435

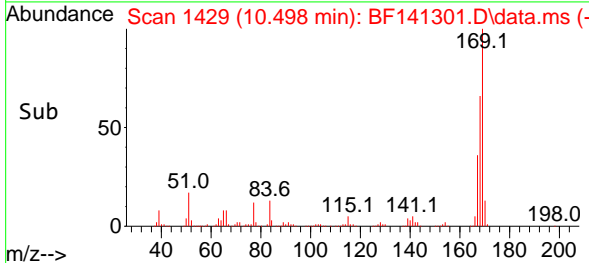
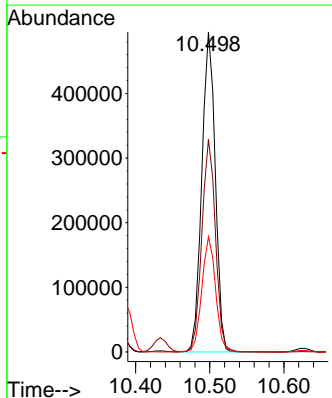
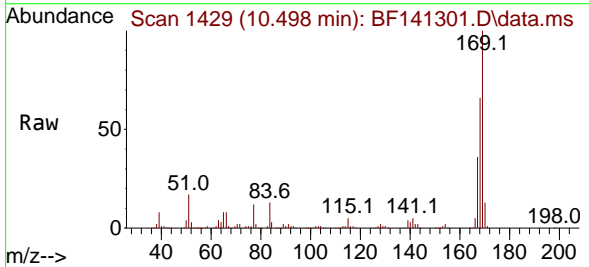
Ion	Ratio	Lower	Upper
198	100		
51	54.7	33.4	73.4
105	44.6	24.4	64.4

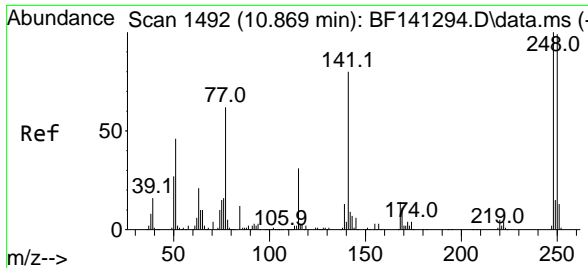


#66
 n-Nitrosodiphenylamine
 Concen: 37.717 ng
 RT: 10.498 min Scan# 1429
 Delta R.T. -0.006 min
 Lab File: BF141301.D
 Acq: 30 Jan 2025 08:54

Tgt Ion:169 Resp: 623386

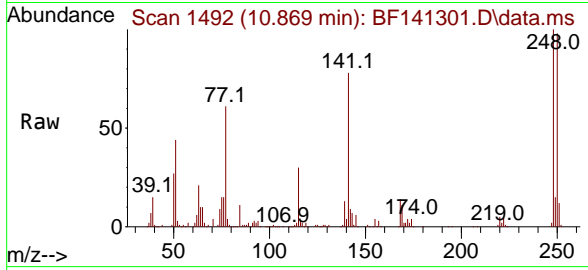
Ion	Ratio	Lower	Upper
169	100		
168	66.5	53.0	79.4
167	36.0	28.8	43.2



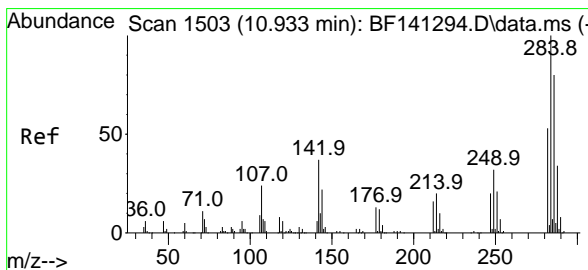
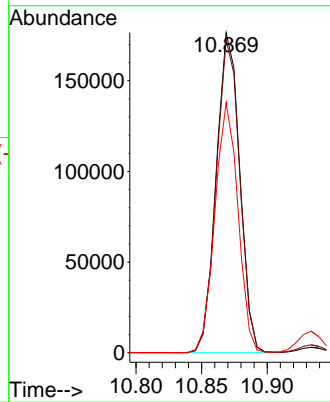
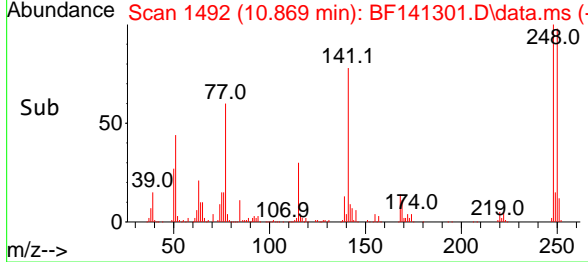


#67
 4-Bromophenyl-phenylether
 Concen: 38.519 ng
 RT: 10.869 min Scan# 1492
 Delta R.T. -0.006 min
 Lab File: BF141301.D
 Acq: 30 Jan 2025 08:54

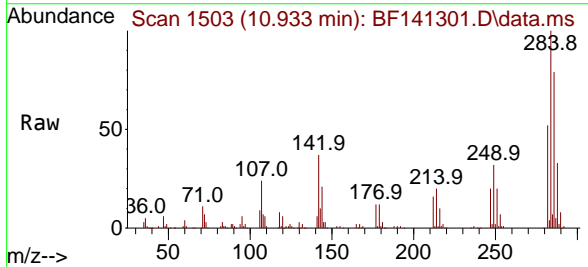
Instrument : BNA_F
 ClientSampleId : SSTDCCC040



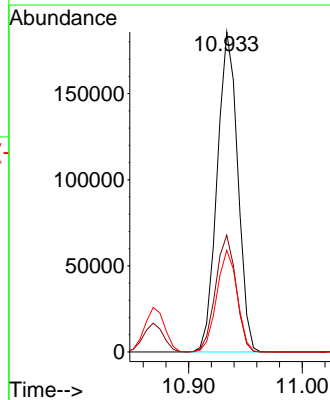
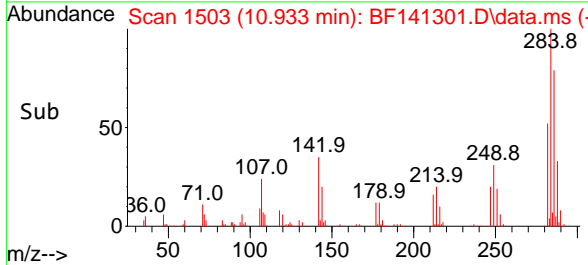
Tgt Ion:248 Resp: 220361
 Ion Ratio Lower Upper
 248 100
 250 97.9 79.0 118.4
 141 78.2 63.7 95.5

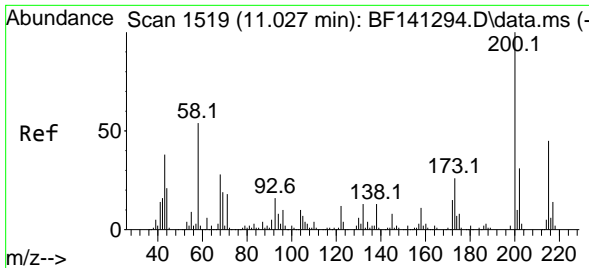


#68
 Hexachlorobenzene
 Concen: 38.606 ng
 RT: 10.933 min Scan# 1503
 Delta R.T. -0.006 min
 Lab File: BF141301.D
 Acq: 30 Jan 2025 08:54



Tgt Ion:284 Resp: 234276
 Ion Ratio Lower Upper
 284 100
 142 36.5 29.5 44.3
 249 31.7 25.4 38.2



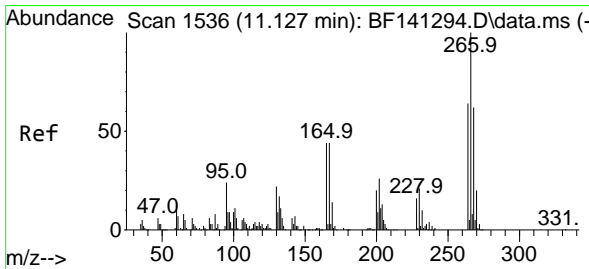
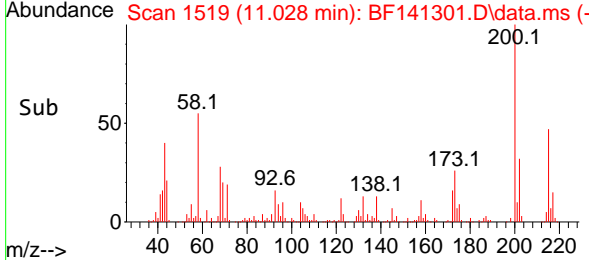
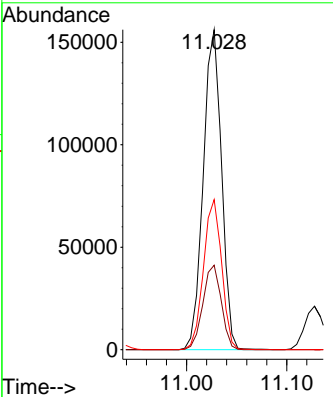
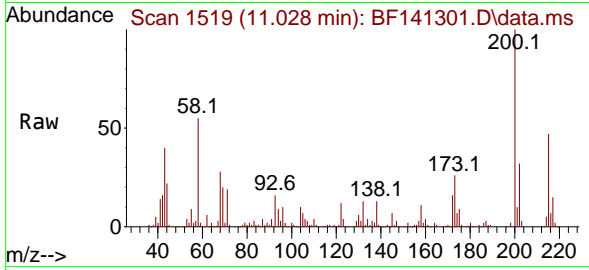


#69
 Atrazine
 Concen: 35.925 ng
 RT: 11.028 min Scan# 11
 Delta R.T. -0.006 min
 Lab File: BF141301.D
 Acq: 30 Jan 2025 08:54

Instrument : BNA_F
 ClientSampleId : SSTDCCC040

Tgt Ion:200 Resp: 198524

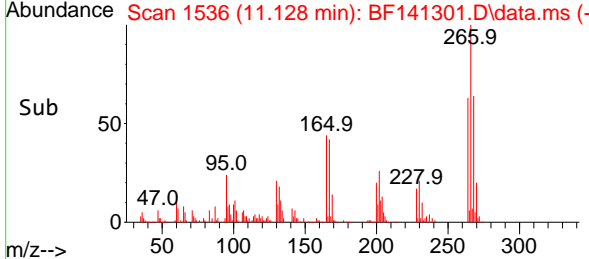
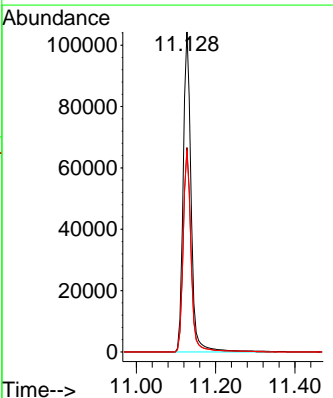
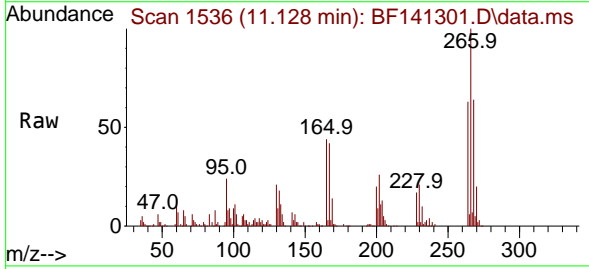
Ion	Ratio	Lower	Upper
200	100		
173	26.4	5.9	45.9
215	46.9	25.2	65.2

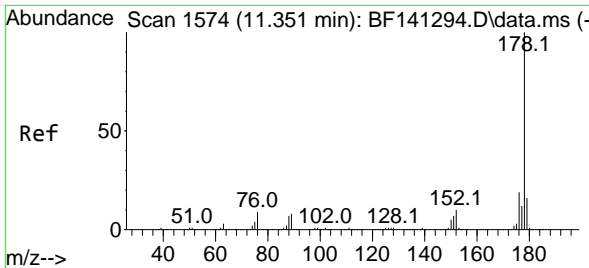


#70
 Pentachlorophenol
 Concen: 40.848 ng
 RT: 11.128 min Scan# 1536
 Delta R.T. -0.006 min
 Lab File: BF141301.D
 Acq: 30 Jan 2025 08:54

Tgt Ion:266 Resp: 145156

Ion	Ratio	Lower	Upper
266	100		
268	63.9	49.9	74.9
264	63.0	51.0	76.4



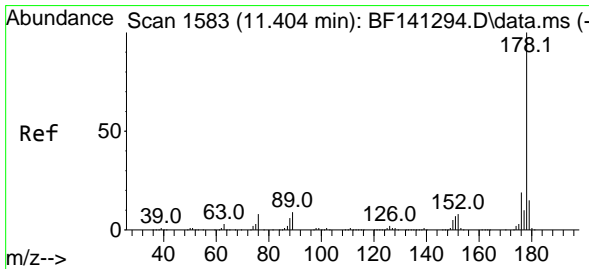
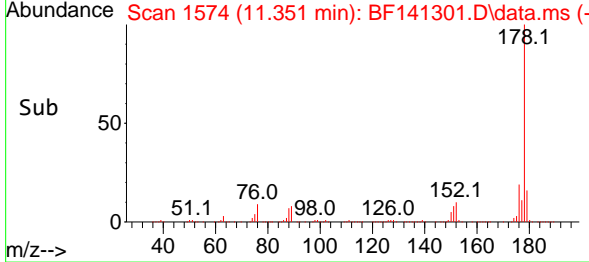
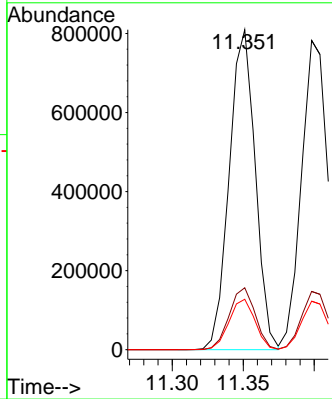
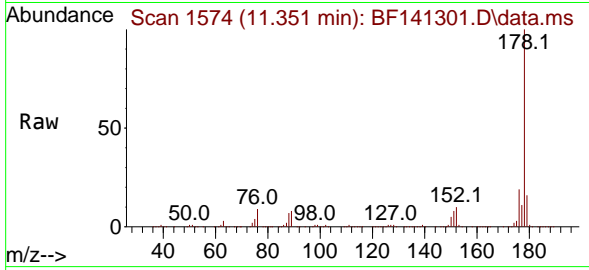


#71
 Phenanthrene
 Concen: 37.489 ng
 RT: 11.351 min Scan# 1574
 Delta R.T. -0.000 min
 Lab File: BF141301.D
 Acq: 30 Jan 2025 08:54

Instrument : BNA_F
 ClientSampleId : SSTDCCC040

Tgt Ion:178 Resp: 1029763

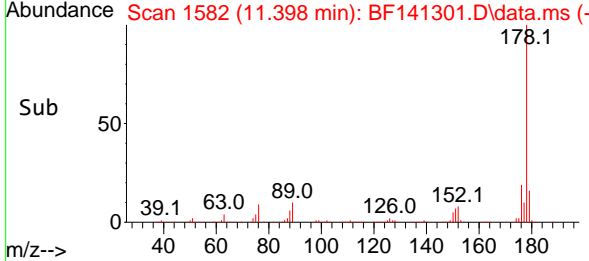
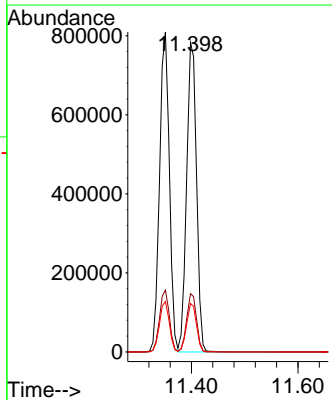
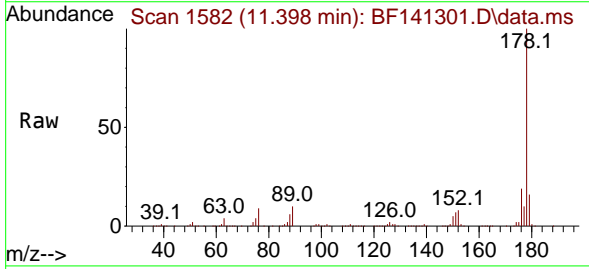
Ion	Ratio	Lower	Upper
178	100		
176	19.3	15.3	22.9
179	15.8	12.5	18.7

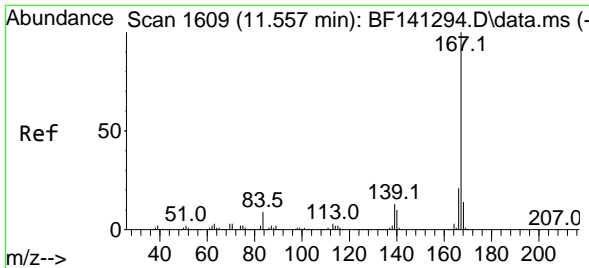


#72
 Anthracene
 Concen: 37.517 ng
 RT: 11.398 min Scan# 1582
 Delta R.T. -0.006 min
 Lab File: BF141301.D
 Acq: 30 Jan 2025 08:54

Tgt Ion:178 Resp: 1009748

Ion	Ratio	Lower	Upper
178	100		
176	18.8	15.0	22.6
179	15.7	12.3	18.5



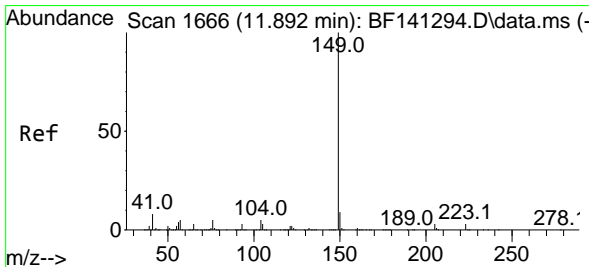
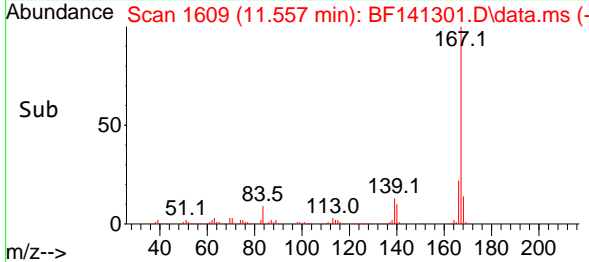
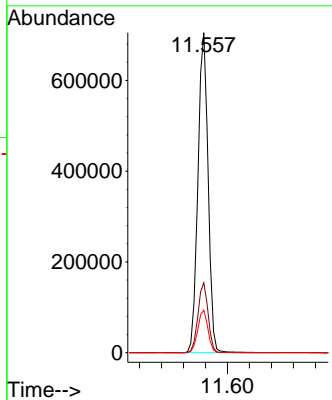
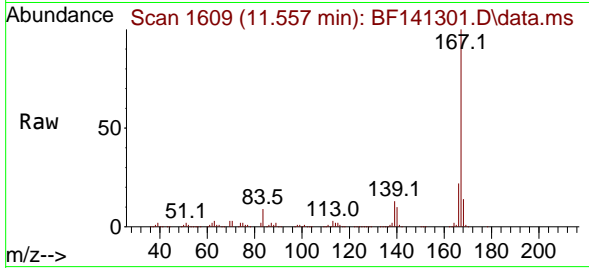


#73
 Carbazole
 Concen: 38.060 ng
 RT: 11.557 min Scan# 1609
 Delta R.T. -0.000 min
 Lab File: BF141301.D
 Acq: 30 Jan 2025 08:54

Instrument : BNA_F
 ClientSampleId : SSTDCCC040

Tgt Ion:167 Resp: 908313

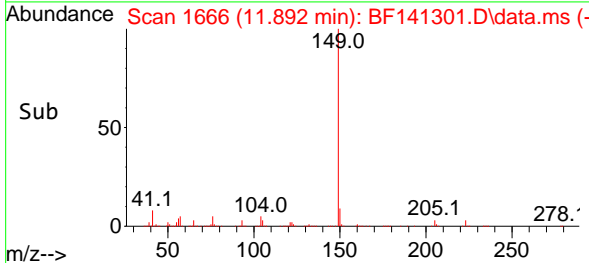
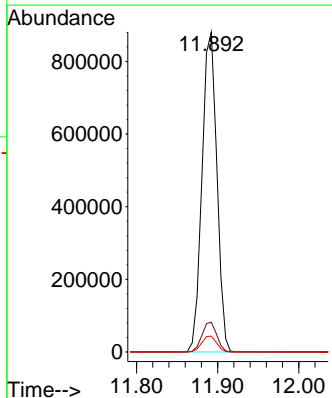
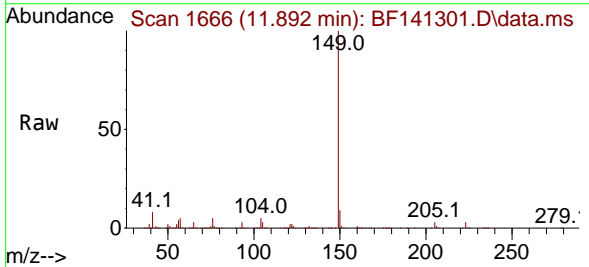
Ion	Ratio	Lower	Upper
167	100		
166	21.8	17.0	25.6
139	13.3	10.6	16.0

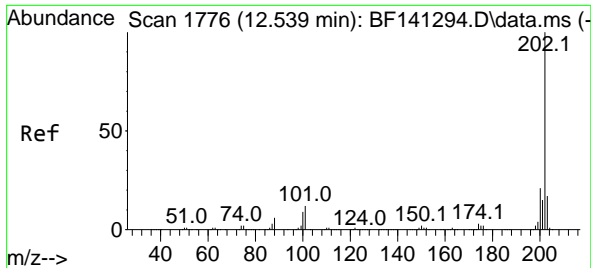


#74
 Di-n-butylphthalate
 Concen: 38.646 ng
 RT: 11.892 min Scan# 1666
 Delta R.T. 0.000 min
 Lab File: BF141301.D
 Acq: 30 Jan 2025 08:54

Tgt Ion:149 Resp: 1117730

Ion	Ratio	Lower	Upper
149	100		
150	9.3	7.4	11.2
104	4.9	3.9	5.9



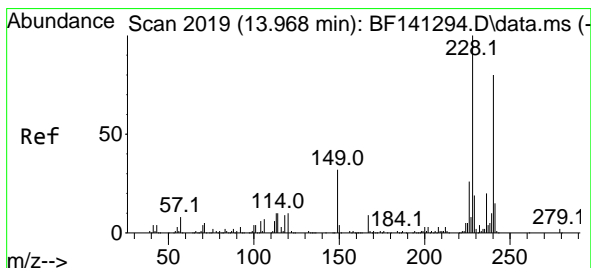
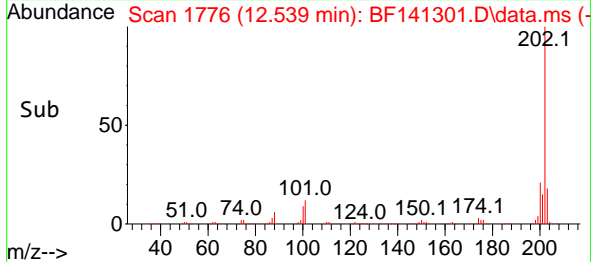
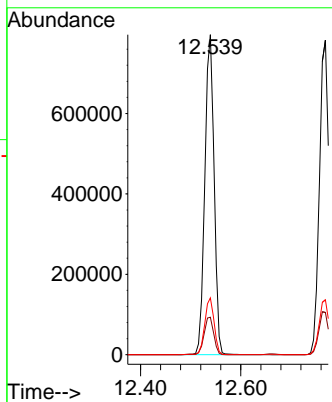
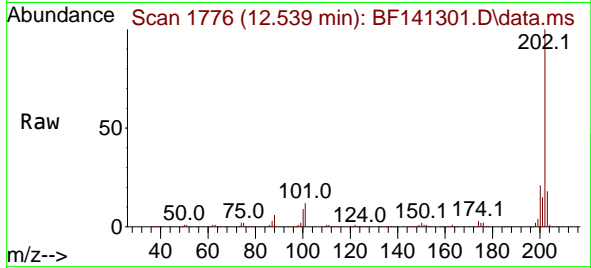


#75
 Fluoranthene
 Concen: 37.857 ng
 RT: 12.539 min Scan# 1776
 Delta R.T. -0.000 min
 Lab File: BF141301.D
 Acq: 30 Jan 2025 08:54

Instrument : BNA_F
 ClientSampleId : SSTDCCC040

Tgt Ion:202 Resp: 1026756

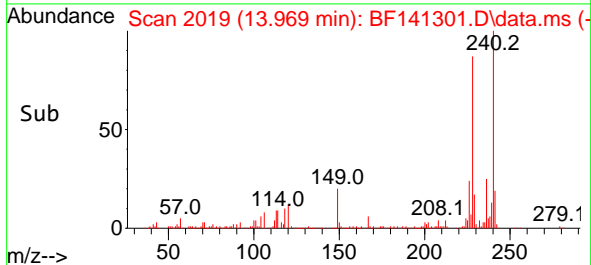
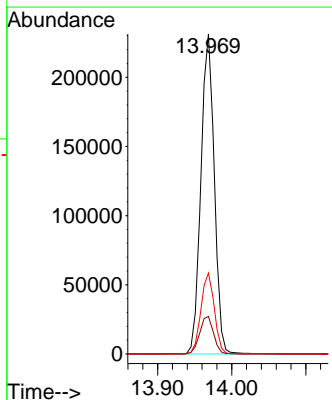
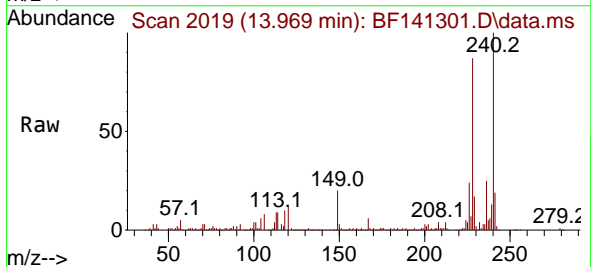
Ion	Ratio	Lower	Upper
202	100		
101	11.7	0.0	31.7
203	17.7	0.0	37.5

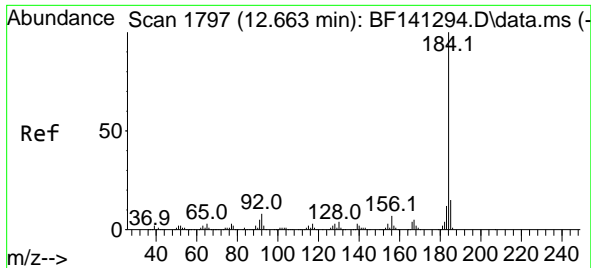


#76
 Chrysene-d12
 Concen: 20.000 ng
 RT: 13.969 min Scan# 2019
 Delta R.T. -0.006 min
 Lab File: BF141301.D
 Acq: 30 Jan 2025 08:54

Tgt Ion:240 Resp: 290304

Ion	Ratio	Lower	Upper
240	100		
120	11.7	10.0	15.0
236	25.3	19.7	29.5





#77
 Benzidine
 Concen: 45.623 ng
 RT: 12.663 min Scan# 11
 Delta R.T. -0.000 min
 Lab File: BF141301.D
 Acq: 30 Jan 2025 08:54

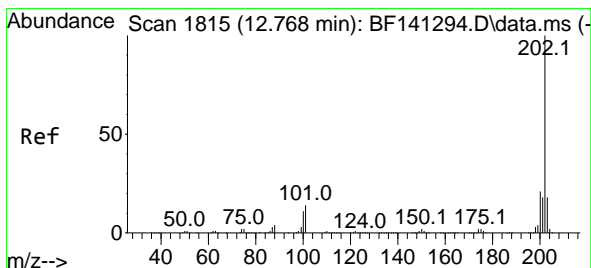
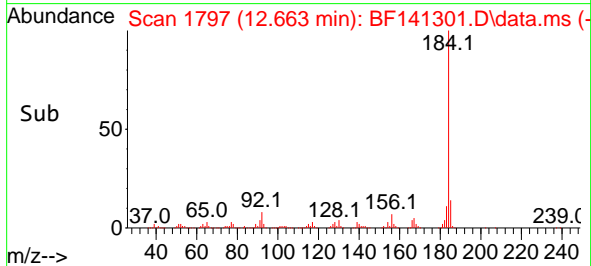
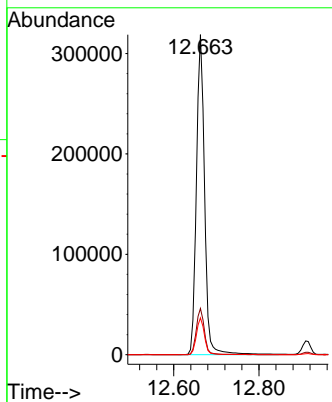
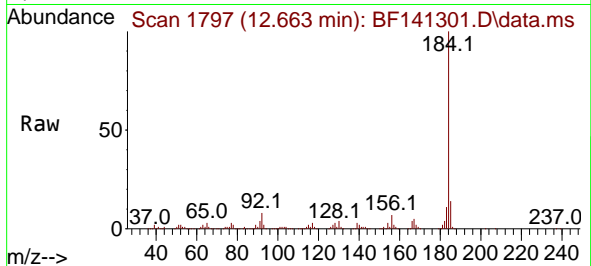
Instrument :

BNA_F

ClientSampleId :

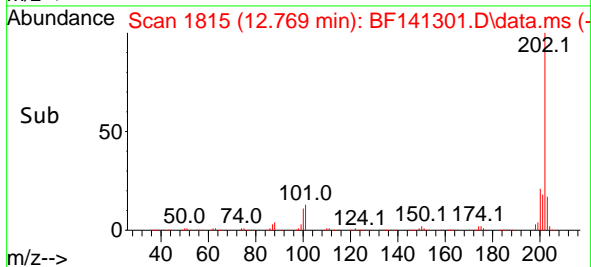
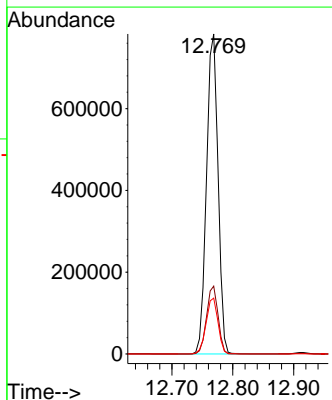
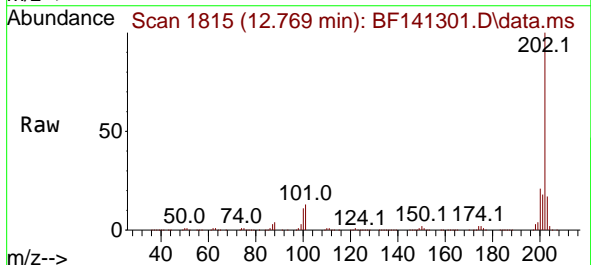
SSTDCCC040

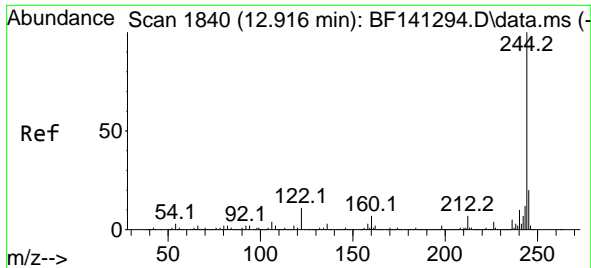
Tgt Ion:184 Resp: 424599
 Ion Ratio Lower Upper
 184 100
 185 14.5 11.9 17.9
 183 11.5 9.5 14.3



#78
 Pyrene
 Concen: 37.019 ng
 RT: 12.769 min Scan# 1815
 Delta R.T. -0.000 min
 Lab File: BF141301.D
 Acq: 30 Jan 2025 08:54

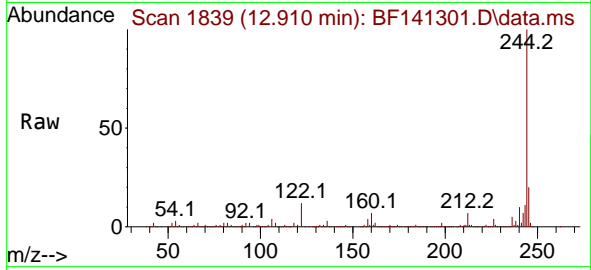
Tgt Ion:202 Resp: 1031587
 Ion Ratio Lower Upper
 202 100
 200 21.2 17.0 25.4
 203 17.4 14.3 21.5



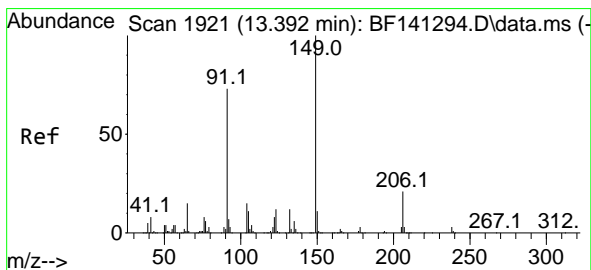
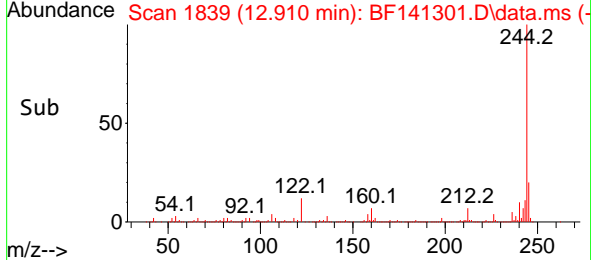
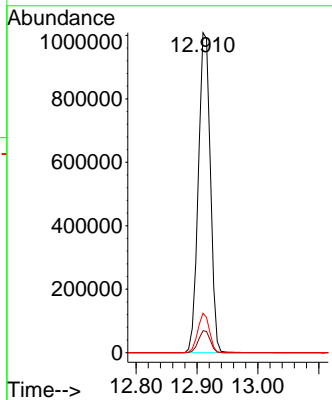


#79
 Terphenyl-d14
 Concen: 73.075 ng
 RT: 12.910 min Scan# 1839
 Delta R.T. -0.006 min
 Lab File: BF141301.D
 Acq: 30 Jan 2025 08:54

Instrument : BNA_F
 ClientSampleId : SSTDCCC040

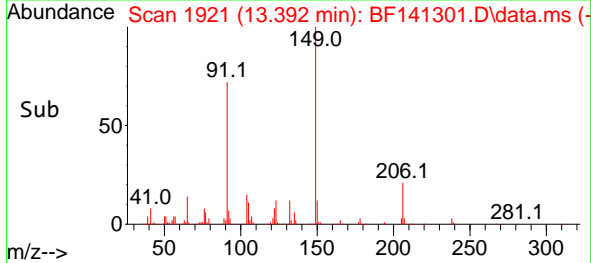
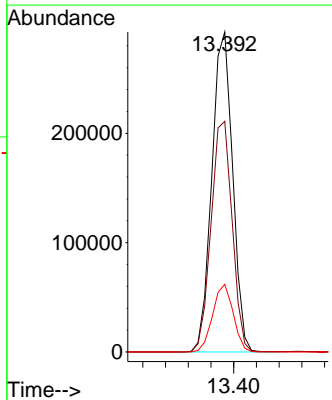
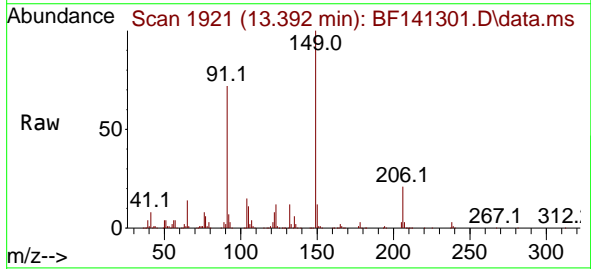


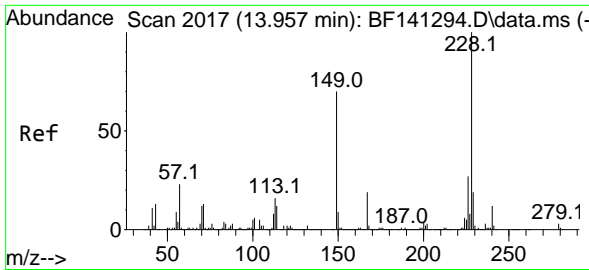
Tgt Ion:244 Resp: 1375587
 Ion Ratio Lower Upper
 244 100
 212 6.9 5.4 8.0
 122 12.3 8.8 13.2



#80
 Butylbenzylphthalate
 Concen: 38.238 ng
 RT: 13.392 min Scan# 1921
 Delta R.T. -0.000 min
 Lab File: BF141301.D
 Acq: 30 Jan 2025 08:54

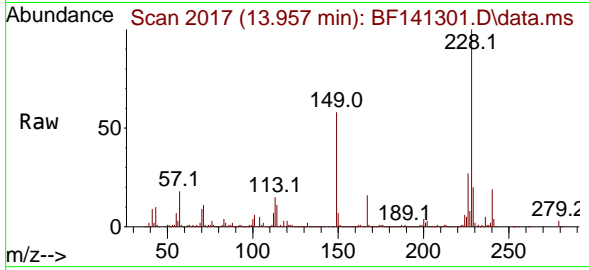
Tgt Ion:149 Resp: 372260
 Ion Ratio Lower Upper
 149 100
 91 72.1 58.6 87.8
 206 21.1 16.7 25.1



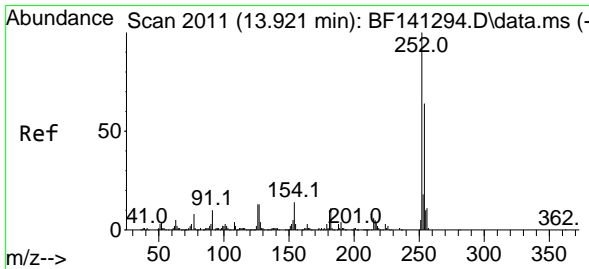
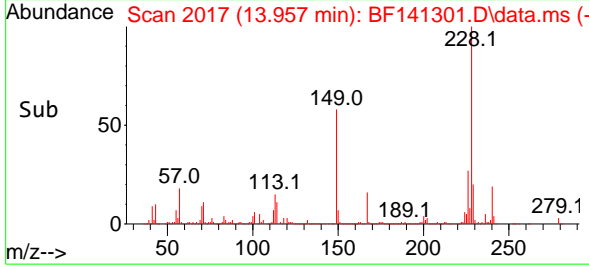
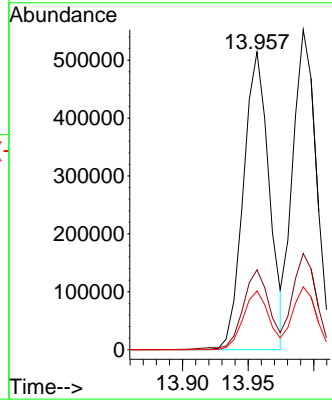


#81
 Benzo(a)anthracene
 Concen: 35.173 ng
 RT: 13.957 min Scan# 2017
 Delta R.T. -0.006 min
 Lab File: BF141301.D
 Acq: 30 Jan 2025 08:54

Instrument :
 BNA_F
 ClientSampleId :
 SSTDCCC040

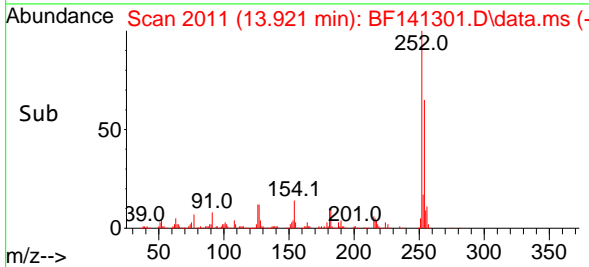
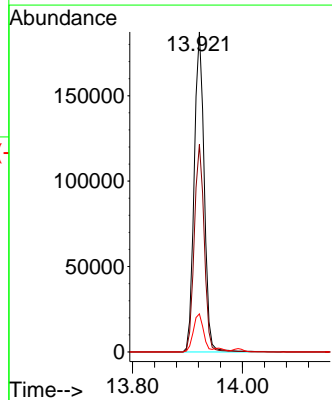
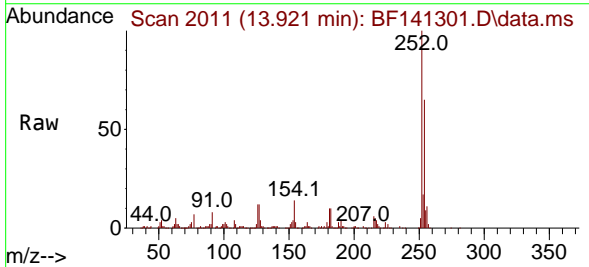


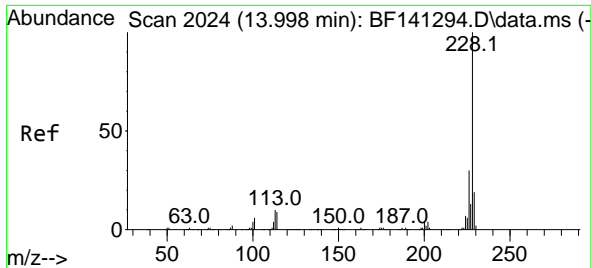
Tgt Ion:228 Resp: 704605
 Ion Ratio Lower Upper
 228 100
 226 26.8 21.4 32.2
 229 19.7 15.5 23.3



#82
 3,3'-Dichlorobenzidine
 Concen: 37.051 ng
 RT: 13.921 min Scan# 2011
 Delta R.T. -0.006 min
 Lab File: BF141301.D
 Acq: 30 Jan 2025 08:54

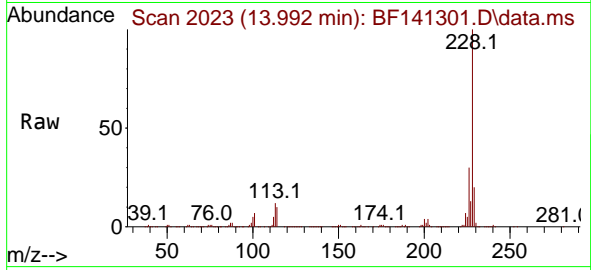
Tgt Ion:252 Resp: 236068
 Ion Ratio Lower Upper
 252 100
 254 64.9 51.3 76.9
 126 11.9 10.0 15.0



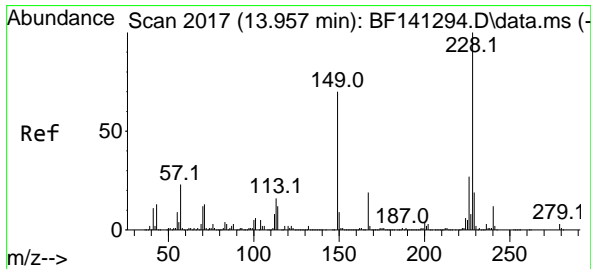
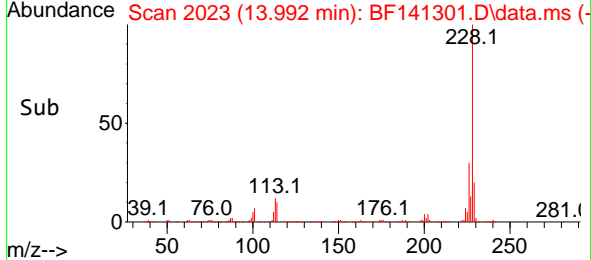
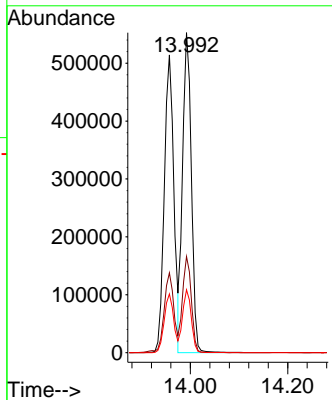


#83
 Chrysene
 Concen: 37.578 ng
 RT: 13.992 min Scan# 2016
 Delta R.T. -0.006 min
 Lab File: BF141301.D
 Acq: 30 Jan 2025 08:54

Instrument : BNA_F
 Client Sample Id : SSTDCCC040

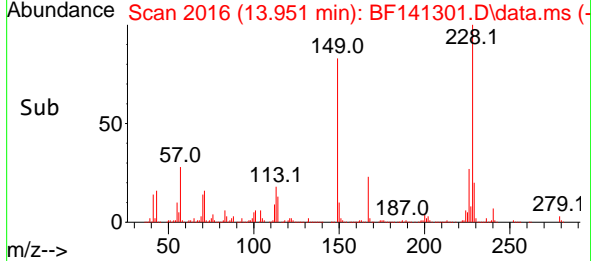
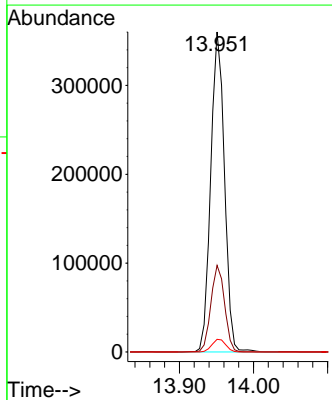
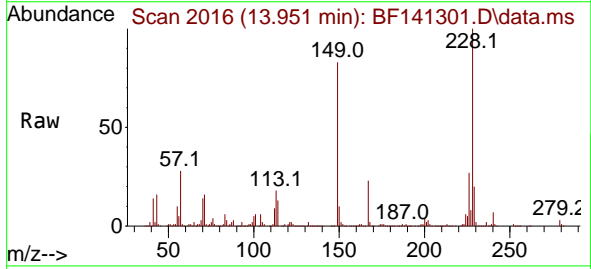


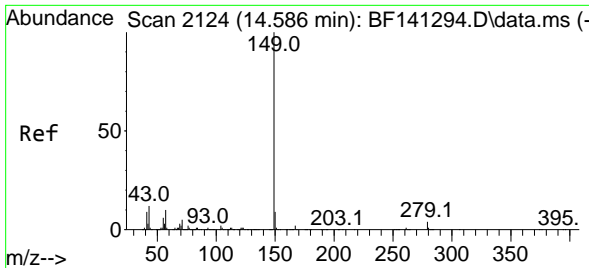
Tgt Ion:228 Resp: 689916
 Ion Ratio Lower Upper
 228 100
 226 30.1 24.1 36.1
 229 19.7 15.6 23.4



#84
 Bis(2-ethylhexyl)phthalate
 Concen: 37.511 ng
 RT: 13.951 min Scan# 2016
 Delta R.T. -0.006 min
 Lab File: BF141301.D
 Acq: 30 Jan 2025 08:54

Tgt Ion:149 Resp: 463244
 Ion Ratio Lower Upper
 149 100
 167 27.1 21.8 32.8
 279 3.9 3.3 4.9



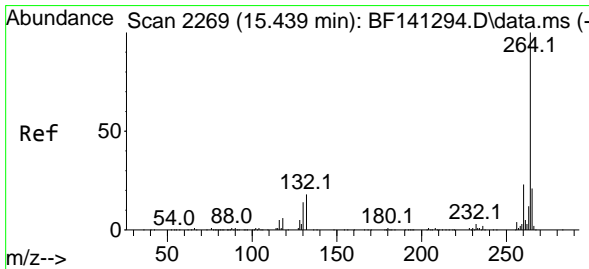
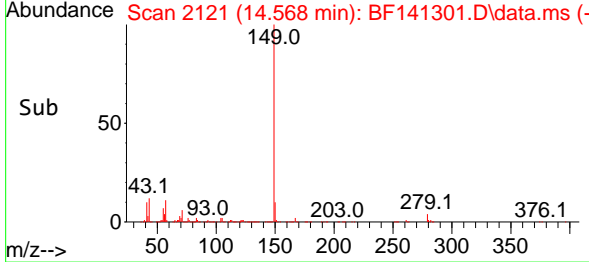
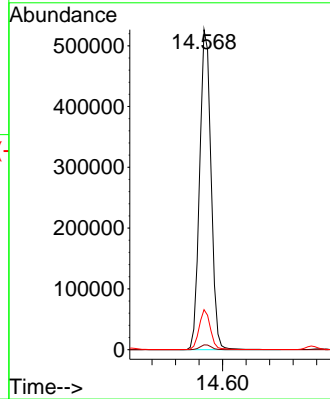
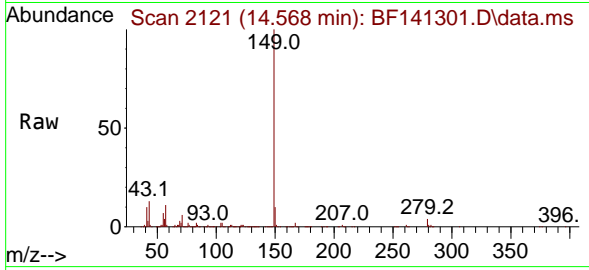


#85
 Di-n-octyl phthalate
 Concen: 36.853 ng
 RT: 14.568 min Scan# 2121
 Delta R.T. -0.018 min
 Lab File: BF141301.D
 Acq: 30 Jan 2025 08:54

Instrument : BNA_F
 ClientSampleId : SSTDCCC040

Tgt Ion:149 Resp: 706897

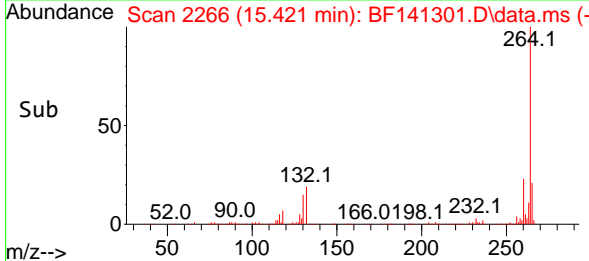
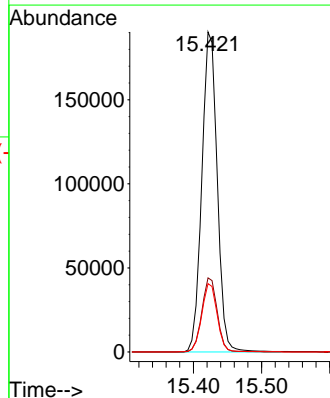
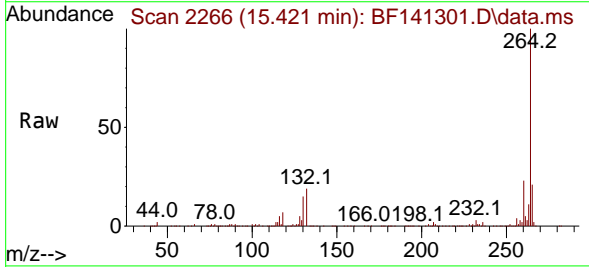
Ion	Ratio	Lower	Upper
149	100		
167	1.5	1.3	1.9
43	12.4	9.8	14.8

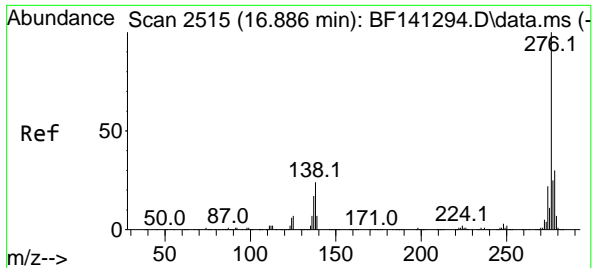


#86
 Perylene-d12
 Concen: 20.000 ng
 RT: 15.421 min Scan# 2266
 Delta R.T. -0.018 min
 Lab File: BF141301.D
 Acq: 30 Jan 2025 08:54

Tgt Ion:264 Resp: 298783

Ion	Ratio	Lower	Upper
264	100		
260	23.1	18.6	27.8
265	21.4	16.7	25.1



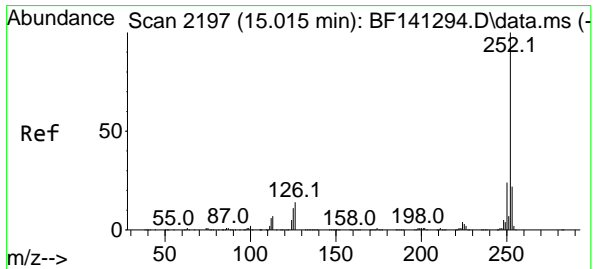
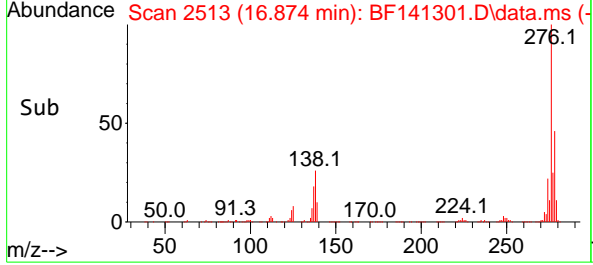
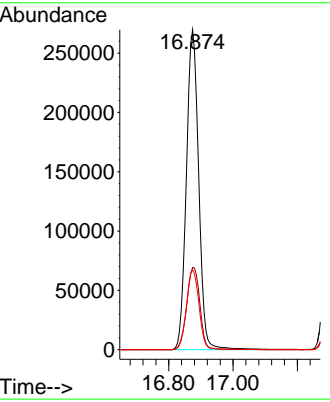
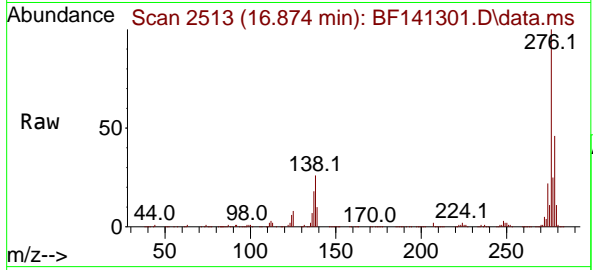


#87
 Indeno(1,2,3-cd)pyrene
 Concen: 37.195 ng
 RT: 16.874 min Scan# 2195
 Delta R.T. -0.024 min
 Lab File: BF141301.D
 Acq: 30 Jan 2025 08:54

Instrument : BNA_F
 ClientSampleId : SSTDCCC040

Tgt Ion:276 Resp: 717281

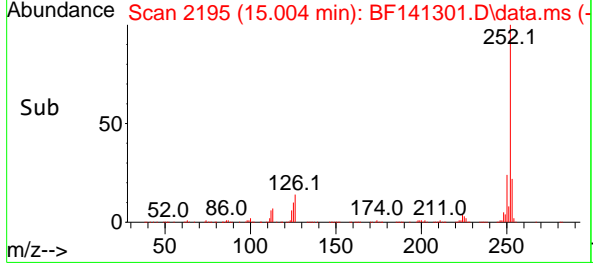
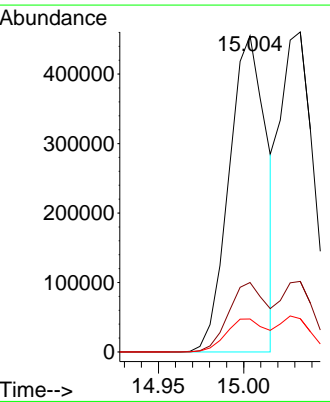
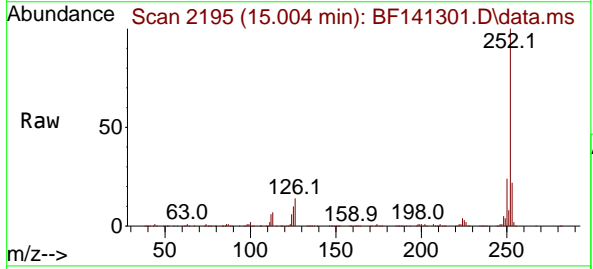
Ion	Ratio	Lower	Upper
276	100		
138	27.5	21.7	32.5
277	25.4	20.3	30.5

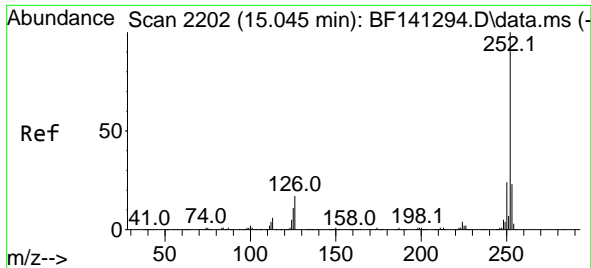


#88
 Benzo(b)fluoranthene
 Concen: 36.951 ng
 RT: 15.004 min Scan# 2195
 Delta R.T. -0.018 min
 Lab File: BF141301.D
 Acq: 30 Jan 2025 08:54

Tgt Ion:252 Resp: 694461

Ion	Ratio	Lower	Upper
252	100		
253	22.0	17.4	26.2
125	10.4	8.6	12.8





#89
 Benzo(k)fluoranthene
 Concen: 37.889 ng
 RT: 15.033 min Scan# 21
 Delta R.T. -0.018 min
 Lab File: BF141301.D
 Acq: 30 Jan 2025 08:54

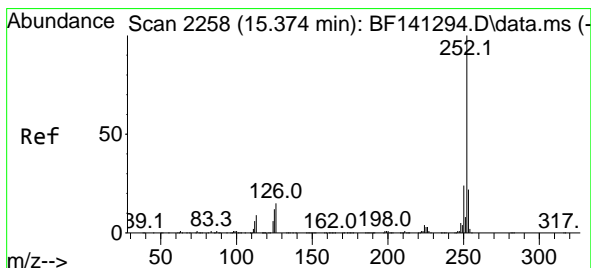
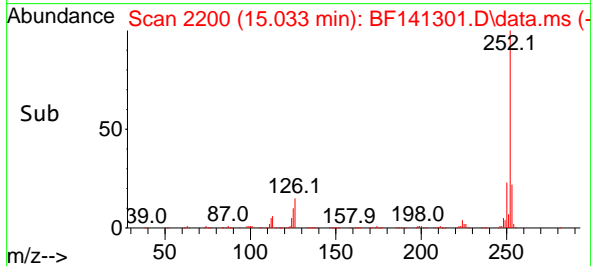
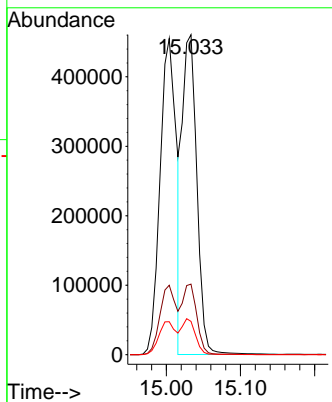
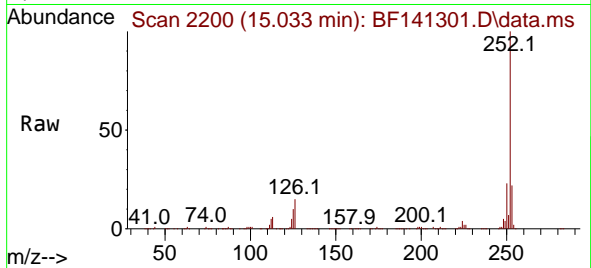
Instrument :

BNA_F

ClientSampleId :

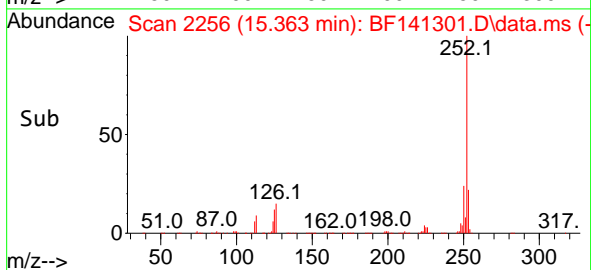
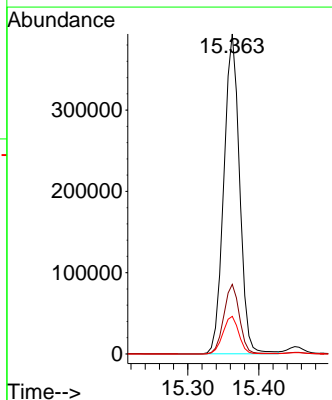
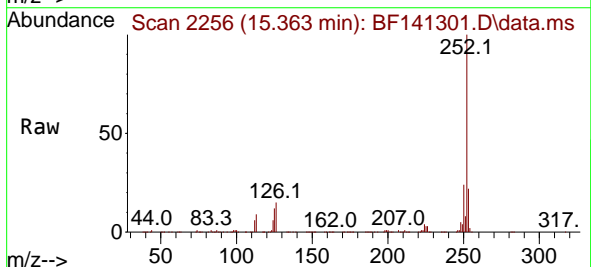
SSTDCCC040

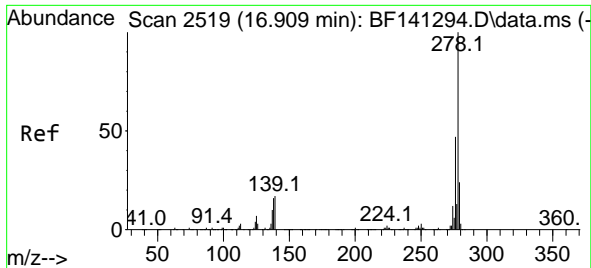
Tgt Ion:252 Resp: 630825
 Ion Ratio Lower Upper
 252 100
 253 22.1 17.6 26.4
 125 10.4 8.4 12.6



#90
 Benzo(a)pyrene
 Concen: 38.001 ng
 RT: 15.363 min Scan# 2256
 Delta R.T. -0.018 min
 Lab File: BF141301.D
 Acq: 30 Jan 2025 08:54

Tgt Ion:252 Resp: 603540
 Ion Ratio Lower Upper
 252 100
 253 21.7 17.2 25.8
 125 11.7 9.4 14.2



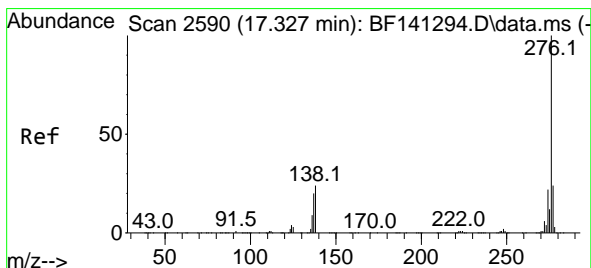
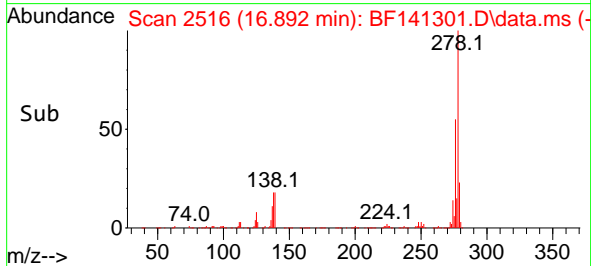
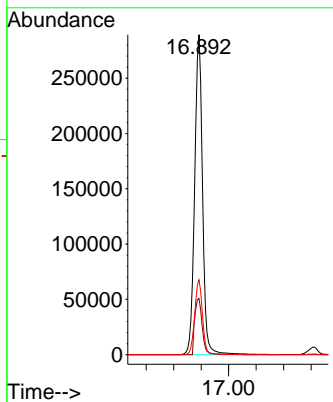
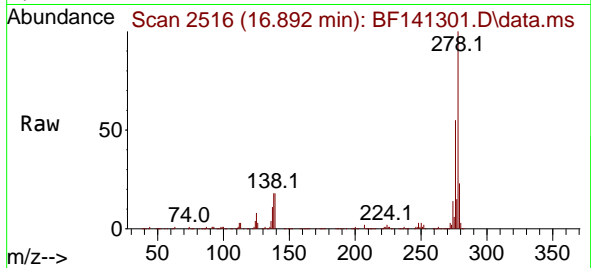


#91
 Dibenzo(a,h)anthracene
 Concen: 37.155 ng
 RT: 16.892 min Scan# 21
 Delta R.T. -0.029 min
 Lab File: BF141301.D
 Acq: 30 Jan 2025 08:54

Instrument :
 BNA_F
 ClientSampleId :
 SSTDCCC040

Tgt Ion:278 Resp: 576450

Ion	Ratio	Lower	Upper
278	100		
139	17.5	13.9	20.9
279	23.4	18.8	28.2



#92
 Benzo(g,h,i)perylene
 Concen: 36.865 ng
 RT: 17.309 min Scan# 2587
 Delta R.T. -0.035 min
 Lab File: BF141301.D
 Acq: 30 Jan 2025 08:54

Tgt Ion:276 Resp: 594713

Ion	Ratio	Lower	Upper
276	100		
277	23.5	19.2	28.8
138	23.3	19.0	28.4

