

Data Path : Z:\pestpcbsrv\HPCHEM1\ECD_L\Data\PL012125\
 Data File : PL093743.D
 Signal(s) : Signal #1: ECD1A.ch Signal #2: ECD2B.ch
 Acq On : 21 Jan 2025 14:20
 Operator : AR\AJ
 Sample : PSTDICV050
 Misc :
 ALS Vial : 20 Sample Multiplier: 1

Instrument :
 ECD_L
 ClientSampleId :
 ICVPL012125

Integration File signal 1: autoint1.e
 Integration File signal 2: autoint2.e
 Quant Time: Jan 21 14:28:53 2025
 Quant Method : Z:\pestpcbsrv\HPCHEM1\ECD_L\methods\PL012125.M
 Quant Title : GC Extractables
 QLast Update : Tue Jan 21 14:02:23 2025
 Response via : Initial Calibration
 Integrator: ChemStation

Volume Inj. : 1 µl
 Signal #1 Phase : ZB-MR1 Signal #2 Phase: ZB-MR2
 Signal #1 Info : 30M x 0.32mm x0.5 Signal #2 Info : 30M x 0.32mm x0.25µm

Compound	RT#1	RT#2	Resp#1	Resp#2	ng/ml	ng/ml

System Monitoring Compounds						
1) SA Tetrachlo...	3.539	2.774	141.2E6	176.6E6	52.434	54.093
28) SA Decachlor...	9.054	7.910	108.7E6	190.8E6	51.975	54.460
Target Compounds						
2) A alpha-BHC	3.995	3.277	200.6E6	269.7E6	52.316	55.168
3) MA gamma-BHC...	4.327	3.607	192.5E6	260.8E6	52.258	55.000
4) MA Heptachlor	4.915	3.945	166.4E6	253.0E6	50.760	54.351
5) MB Aldrin	5.256	4.225	167.1E6	250.6E6	51.084	54.939
6) B beta-BHC	4.525	3.907	81194319	107.5E6	50.515	53.798
7) B delta-BHC	4.772	4.135	181.5E6	260.8E6	51.768	54.892
8) B Heptachlo...	5.683	4.727	150.9E6	228.4E6	50.731	54.639
9) A Endosulfan I	6.068	5.096	134.8E6	212.0E6	51.009	54.694
10) B gamma-Chl...	5.938	4.977	144.6E6	231.3E6	51.881	54.579
11) B alpha-Chl...	6.017	5.041	143.8E6	228.4E6	51.572	54.561
12) B 4,4'-DDE	6.191	5.229	129.1E6	221.4E6	53.039	55.209
13) MA Dieldrin	6.343	5.361	143.4E6	234.2E6	51.649	54.528
14) MA Endrin	6.573	5.636	118.4E6	194.0E6	50.501	52.537
15) B Endosulfa...	6.793	5.931	124.2E6	202.0E6	51.563	54.540
16) A 4,4'-DDD	6.709	5.785	101.9E6	178.4E6	53.599	56.515
17) MA 4,4'-DDT	7.023	6.035	104.2E6	181.3E6	52.862	55.711
18) B Endrin al...	6.923	6.111	101.8E6	165.3E6	52.345	54.299
19) B Endosulfa...	7.158	6.333	115.9E6	193.8E6	51.182	54.342
20) A Methoxychlor	7.499	6.610	56233890	95758805	53.895	53.552
21) B Endrin ke...	7.642	6.838	132.2E6	231.2E6	52.424	55.120
22) Mirex	8.115	7.019	106.9E6	182.6E6	51.338	54.005

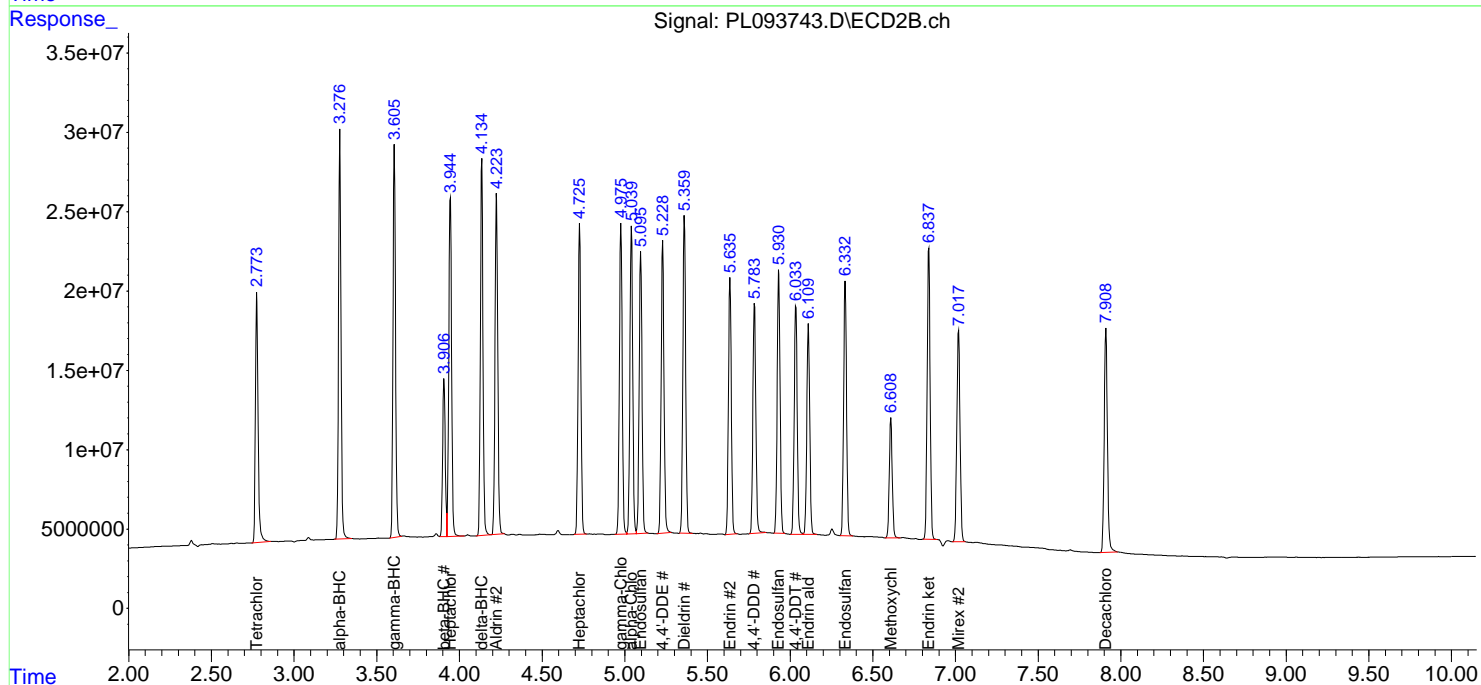
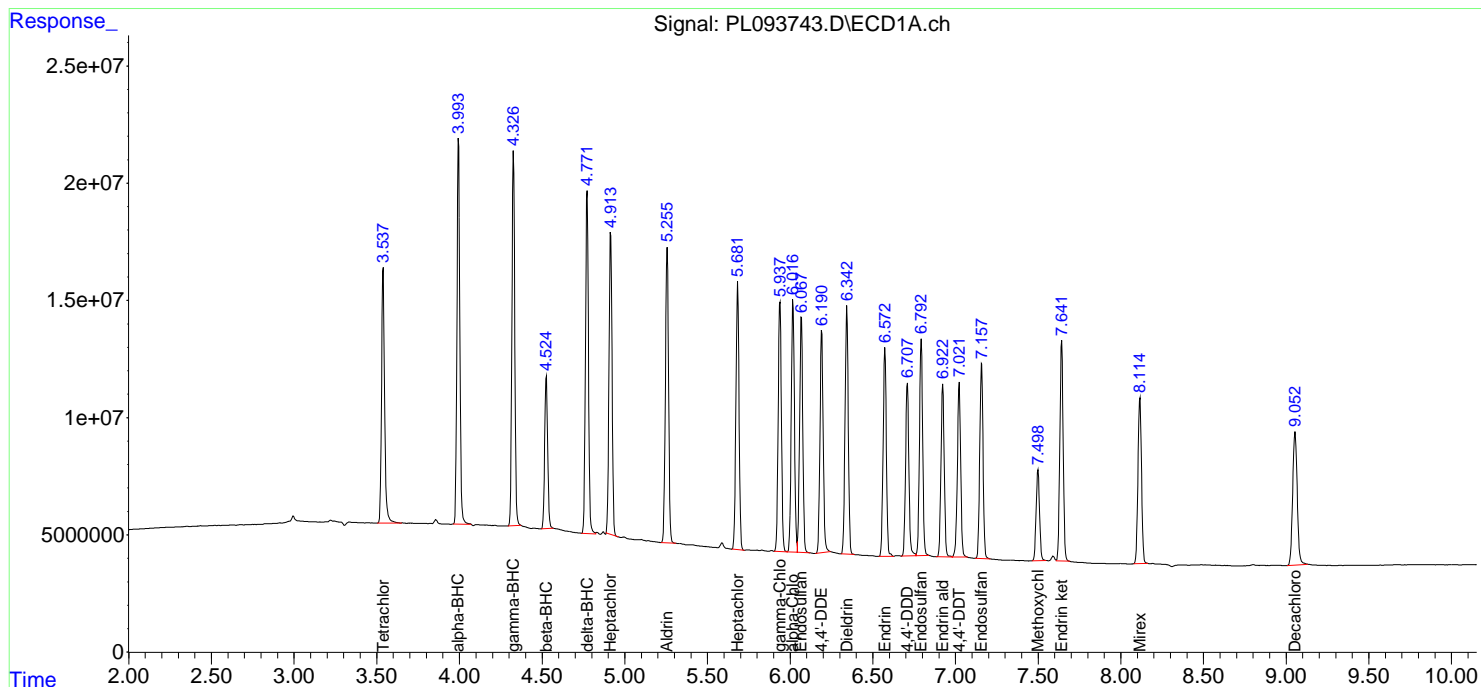
(f)=RT Delta > 1/2 Window (#)=Amounts differ by > 25% (m)=manual int.

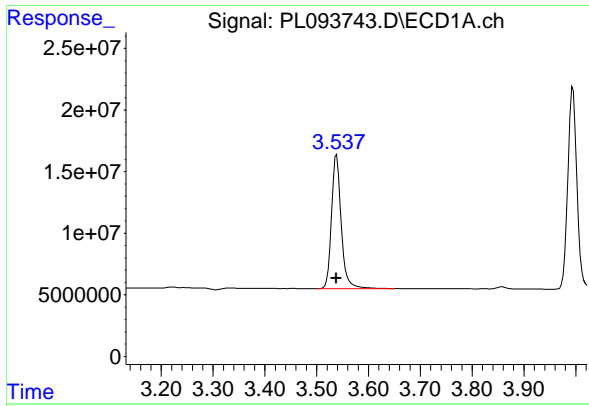
Data Path : Z:\pestpcbsrv\HPCHEM1\ECD_L\Data\PL012125\
 Data File : PL093743.D
 Signal(s) : Signal #1: ECD1A.ch Signal #2: ECD2B.ch
 Acq On : 21 Jan 2025 14:20
 Operator : AR\AJ
 Sample : PSTDICV050
 Misc :
 ALS Vial : 20 Sample Multiplier: 1

Instrument :
 ECD_L
 ClientSampleId :
 ICVPL012125

Integration File signal 1: autoint1.e
 Integration File signal 2: autoint2.e
 Quant Time: Jan 21 14:28:53 2025
 Quant Method : Z:\pestpcbsrv\HPCHEM1\ECD_L\methods\PL012125.M
 Quant Title : GC Extractables
 QLast Update : Tue Jan 21 14:02:23 2025
 Response via : Initial Calibration
 Integrator: ChemStation

Volume Inj. : 1 µl
 Signal #1 Phase : ZB-MR1 Signal #2 Phase: ZB-MR2
 Signal #1 Info : 30M x 0.32mm x0.5 Signal #2 Info : 30M x 0.32mm x0.25µm

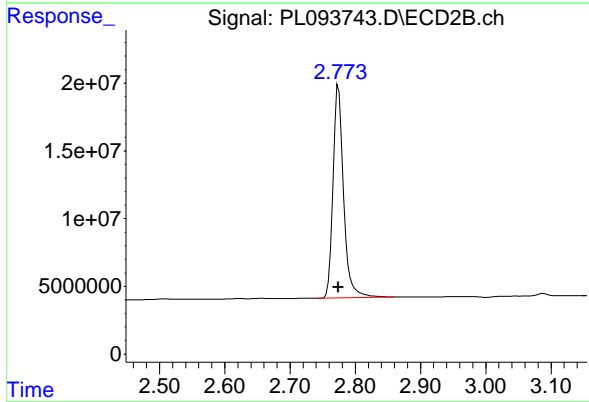




#1 Tetrachloro-m-xylene

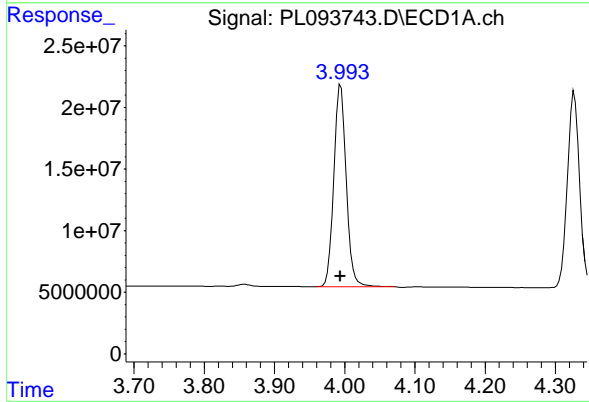
R.T.: 3.539 min
 Delta R.T.: 0.000 min
 Response: 141191268
 Conc: 52.43 ng/ml

Instrument :
 ECD_L
 ClientSampleId :
 ICVPL012125



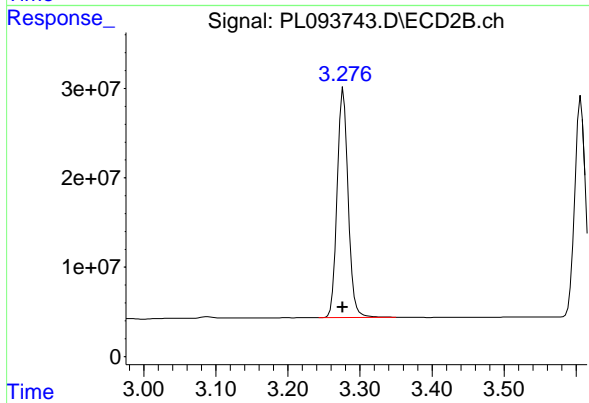
#1 Tetrachloro-m-xylene

R.T.: 2.774 min
 Delta R.T.: 0.000 min
 Response: 176566835
 Conc: 54.09 ng/ml



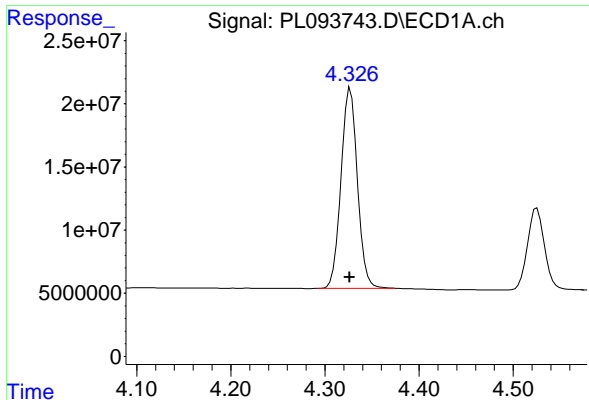
#2 alpha-BHC

R.T.: 3.995 min
 Delta R.T.: 0.000 min
 Response: 200569905
 Conc: 52.32 ng/ml



#2 alpha-BHC

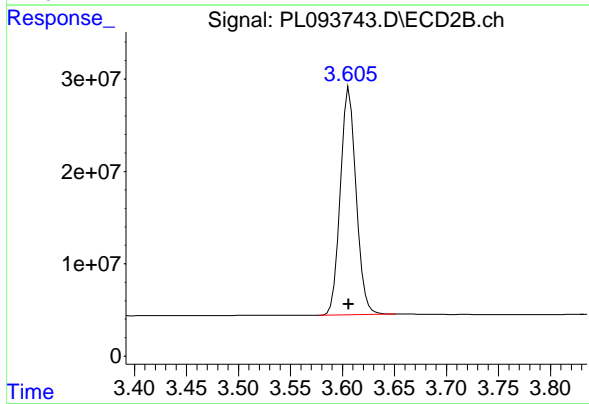
R.T.: 3.277 min
 Delta R.T.: 0.000 min
 Response: 269716716
 Conc: 55.17 ng/ml



#3 gamma-BHC (Lindane)

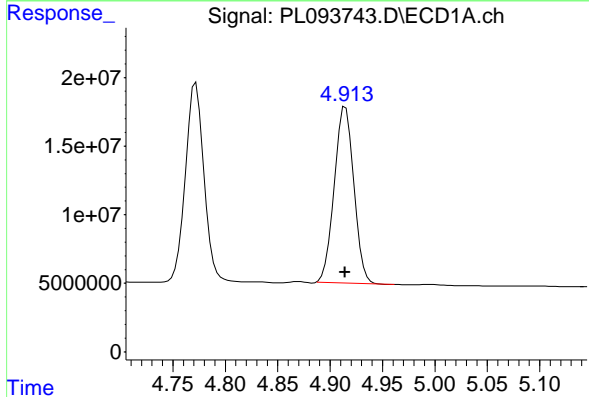
R.T.: 4.327 min
 Delta R.T.: 0.000 min
 Response: 192459165
 Conc: 52.26 ng/ml

Instrument :
 ECD_L
 ClientSampleId :
 ICVPL012125



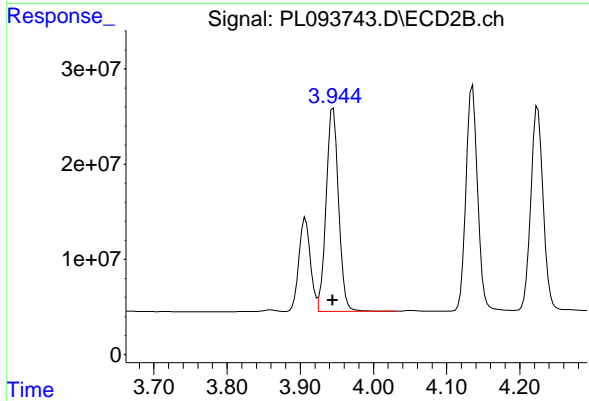
#3 gamma-BHC (Lindane)

R.T.: 3.607 min
 Delta R.T.: 0.000 min
 Response: 260765963
 Conc: 55.00 ng/ml



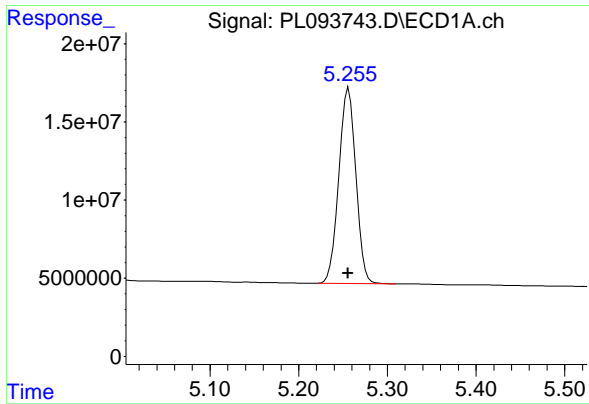
#4 Heptachlor

R.T.: 4.915 min
 Delta R.T.: 0.000 min
 Response: 166357805
 Conc: 50.76 ng/ml



#4 Heptachlor

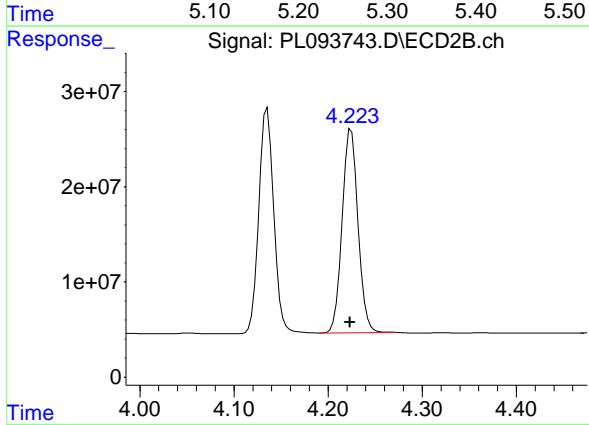
R.T.: 3.945 min
 Delta R.T.: 0.000 min
 Response: 252994081
 Conc: 54.35 ng/ml



#5 Aldrin

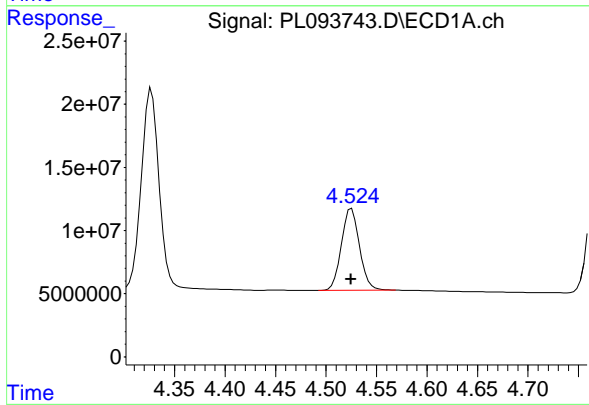
R.T.: 5.256 min
 Delta R.T.: 0.000 min
 Response: 167145833
 Conc: 51.08 ng/ml

Instrument :
 ECD_L
 ClientSampleId :
 ICVPL012125



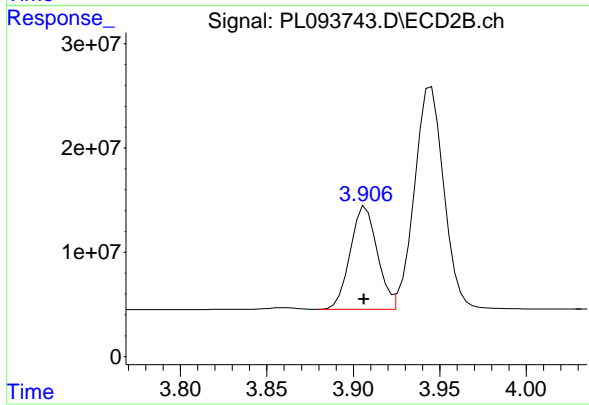
#5 Aldrin

R.T.: 4.225 min
 Delta R.T.: 0.001 min
 Response: 250621610
 Conc: 54.94 ng/ml



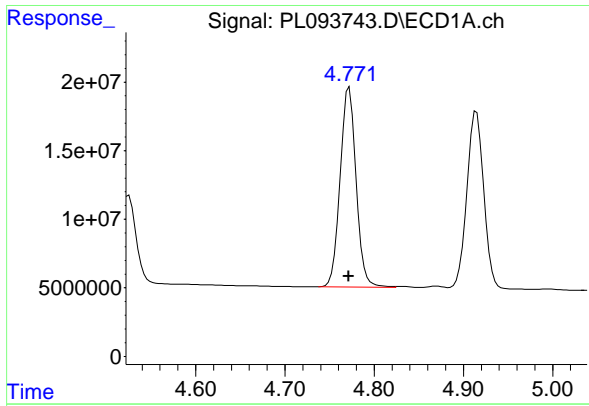
#6 beta-BHC

R.T.: 4.525 min
 Delta R.T.: 0.000 min
 Response: 81194319
 Conc: 50.52 ng/ml



#6 beta-BHC

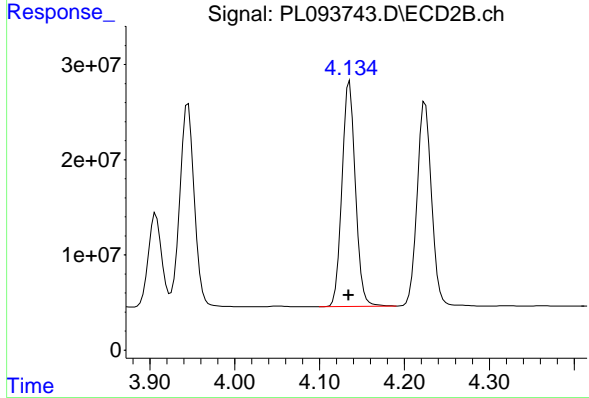
R.T.: 3.907 min
 Delta R.T.: 0.001 min
 Response: 107457324
 Conc: 53.80 ng/ml



#7 delta-BHC

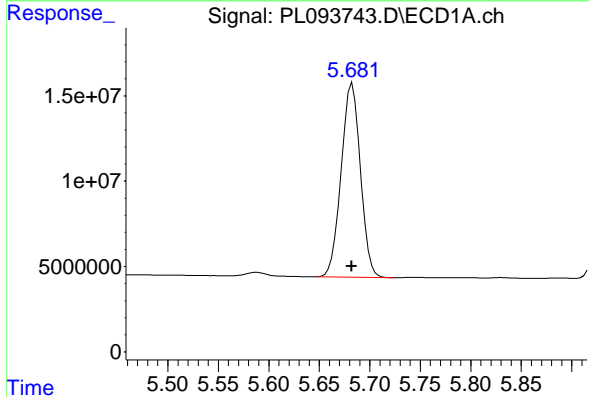
R.T.: 4.772 min
 Delta R.T.: 0.000 min
 Response: 181463119
 Conc: 51.77 ng/ml

Instrument :
 ECD_L
 ClientSampleId :
 ICVPL012125



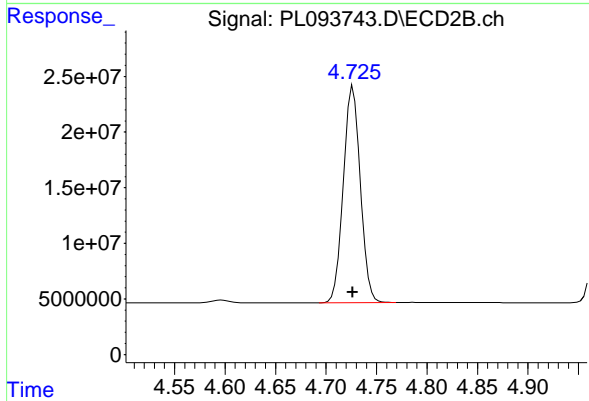
#7 delta-BHC

R.T.: 4.135 min
 Delta R.T.: 0.000 min
 Response: 260806257
 Conc: 54.89 ng/ml



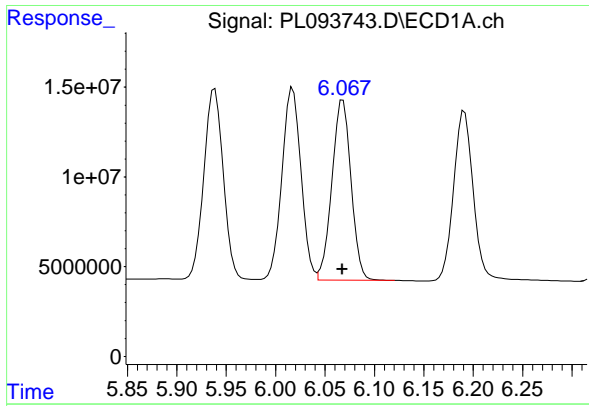
#8 Heptachlor epoxide

R.T.: 5.683 min
 Delta R.T.: 0.000 min
 Response: 150865872
 Conc: 50.73 ng/ml



#8 Heptachlor epoxide

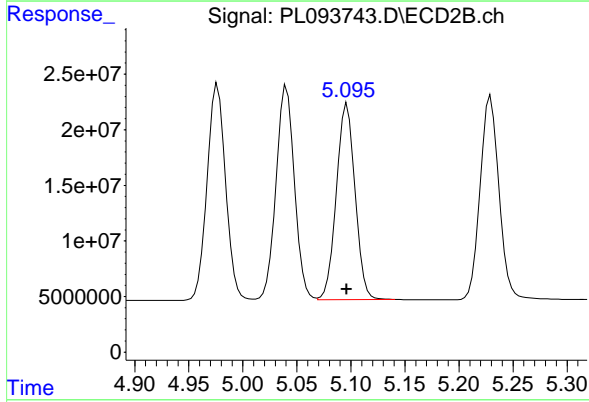
R.T.: 4.727 min
 Delta R.T.: 0.000 min
 Response: 228406178
 Conc: 54.64 ng/ml



#9 Endosulfan I

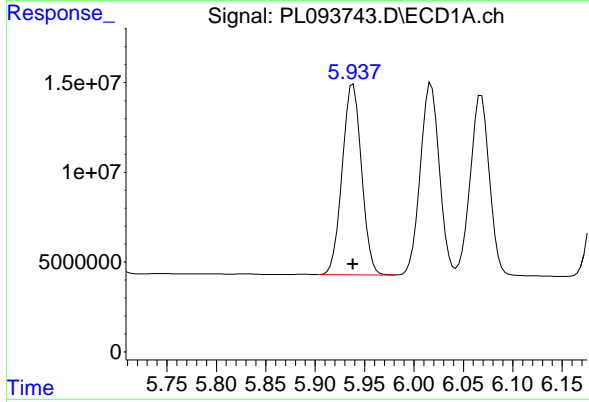
R.T.: 6.068 min
 Delta R.T.: 0.000 min
 Response: 134808929
 Conc: 51.01 ng/ml

Instrument :
 ECD_L
 ClientSampleId :
 ICVPL012125



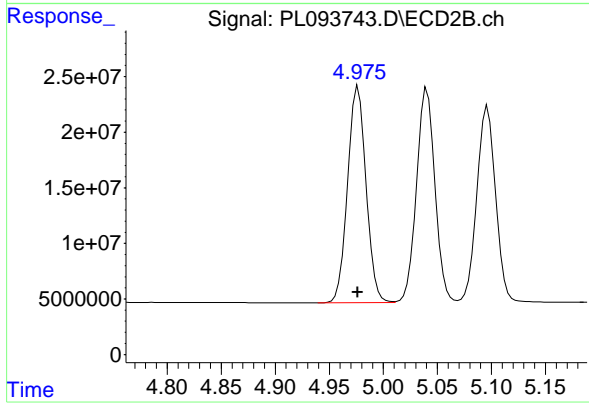
#9 Endosulfan I

R.T.: 5.096 min
 Delta R.T.: 0.000 min
 Response: 212043680
 Conc: 54.69 ng/ml



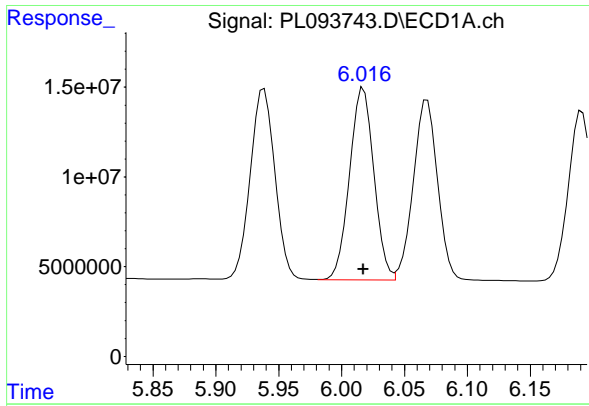
#10 gamma-Chlordane

R.T.: 5.938 min
 Delta R.T.: 0.000 min
 Response: 144611164
 Conc: 51.88 ng/ml



#10 gamma-Chlordane

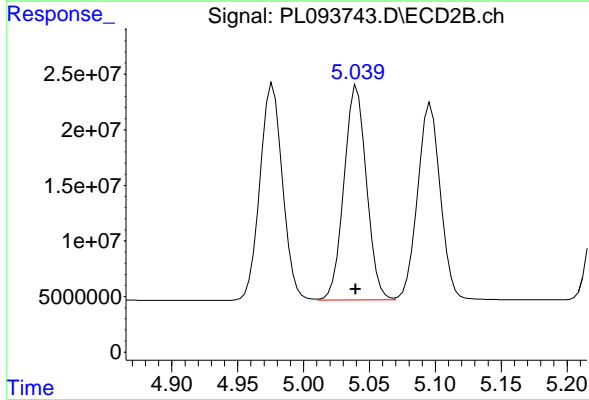
R.T.: 4.977 min
 Delta R.T.: 0.000 min
 Response: 231285603
 Conc: 54.58 ng/ml



#11 alpha-Chlordane

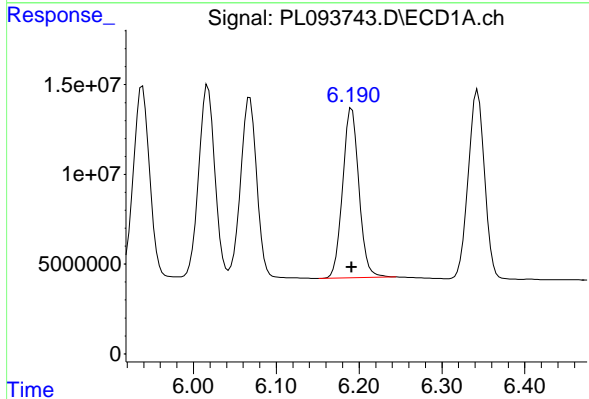
R.T.: 6.017 min
 Delta R.T.: 0.000 min
 Response: 143803294
 Conc: 51.57 ng/ml

Instrument :
 ECD_L
 ClientSampleId :
 ICVPL012125



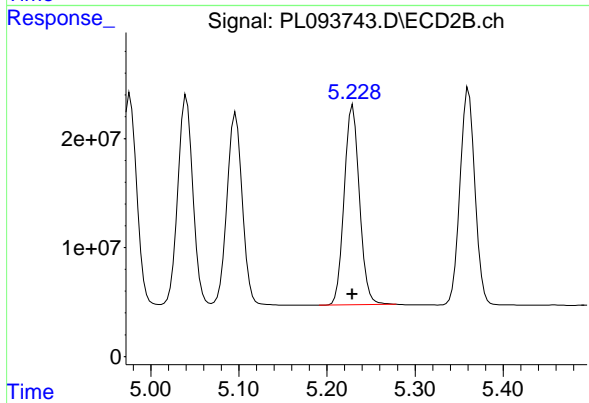
#11 alpha-Chlordane

R.T.: 5.041 min
 Delta R.T.: 0.001 min
 Response: 228422304
 Conc: 54.56 ng/ml



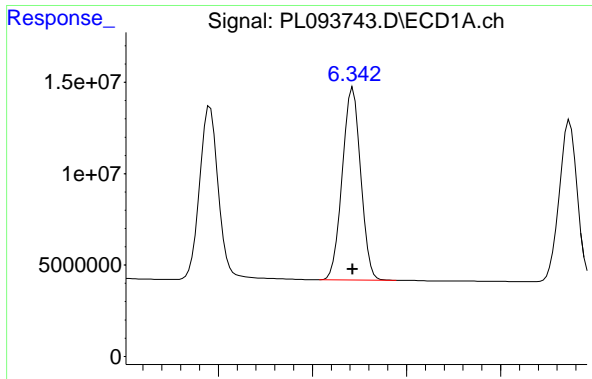
#12 4,4'-DDE

R.T.: 6.191 min
 Delta R.T.: 0.000 min
 Response: 129128935
 Conc: 53.04 ng/ml



#12 4,4'-DDE

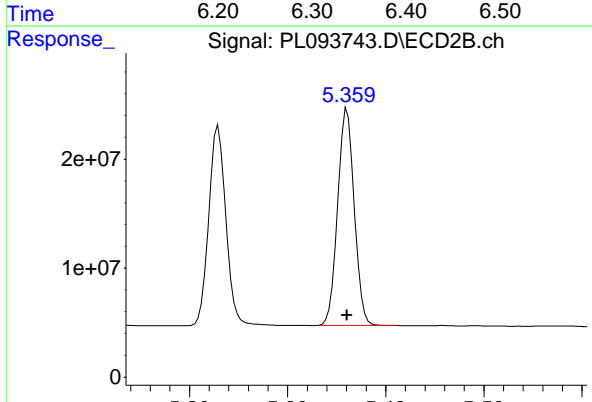
R.T.: 5.229 min
 Delta R.T.: 0.000 min
 Response: 221359531
 Conc: 55.21 ng/ml



#13 Dieldrin

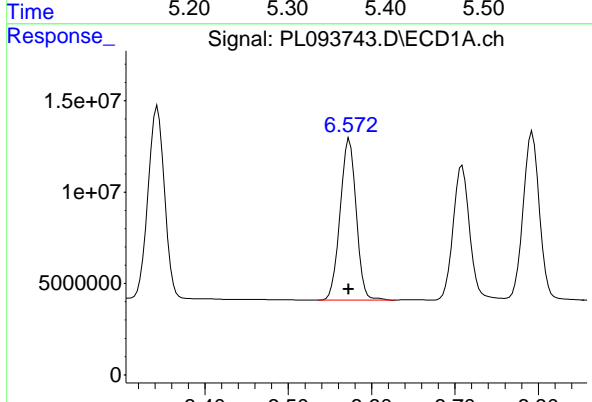
R.T.: 6.343 min
 Delta R.T.: 0.000 min
 Response: 143369662
 Conc: 51.65 ng/ml

Instrument :
 ECD_L
 ClientSampleId :
 ICVPL012125



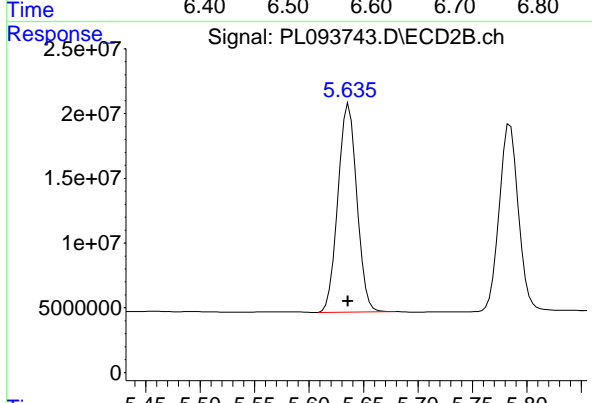
#13 Dieldrin

R.T.: 5.361 min
 Delta R.T.: 0.000 min
 Response: 234235081
 Conc: 54.53 ng/ml



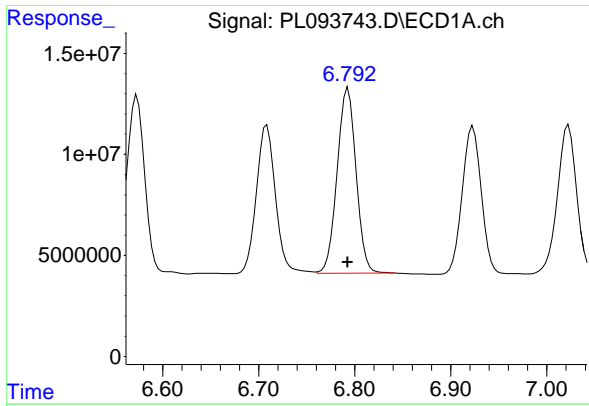
#14 Endrin

R.T.: 6.573 min
 Delta R.T.: 0.000 min
 Response: 118416700
 Conc: 50.50 ng/ml



#14 Endrin

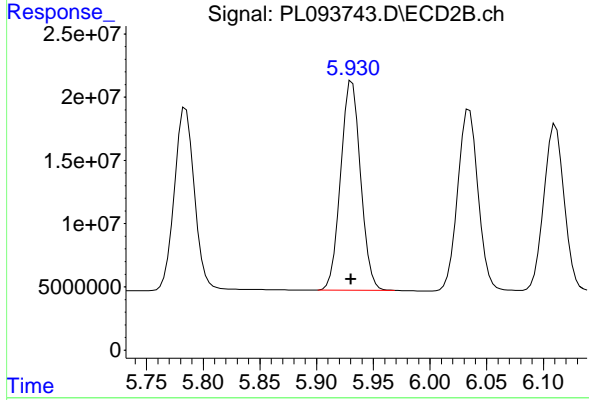
R.T.: 5.636 min
 Delta R.T.: 0.000 min
 Response: 194001333
 Conc: 52.54 ng/ml



#15 Endosulfan II

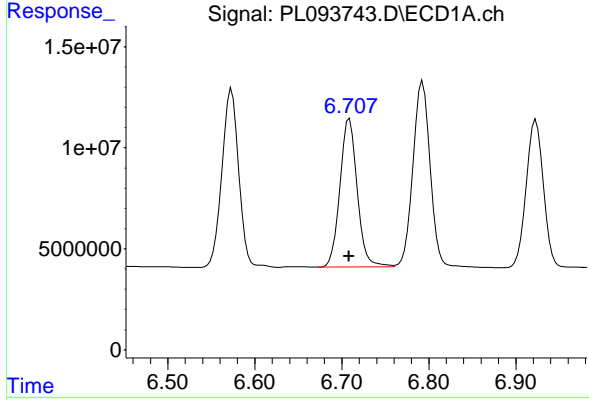
R.T.: 6.793 min
 Delta R.T.: 0.000 min
 Response: 124234027
 Conc: 51.56 ng/ml

Instrument :
 ECD_L
 ClientSampleId :
 ICVPL012125



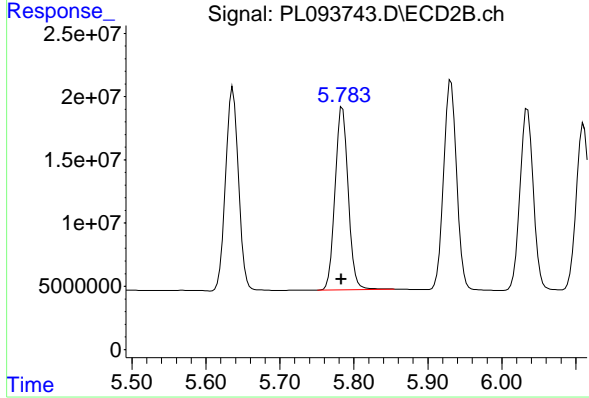
#15 Endosulfan II

R.T.: 5.931 min
 Delta R.T.: 0.001 min
 Response: 202005610
 Conc: 54.54 ng/ml



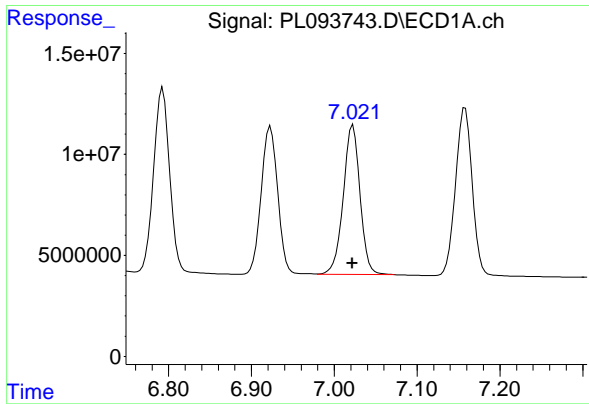
#16 4,4'-DDD

R.T.: 6.709 min
 Delta R.T.: 0.000 min
 Response: 101868364
 Conc: 53.60 ng/ml



#16 4,4'-DDD

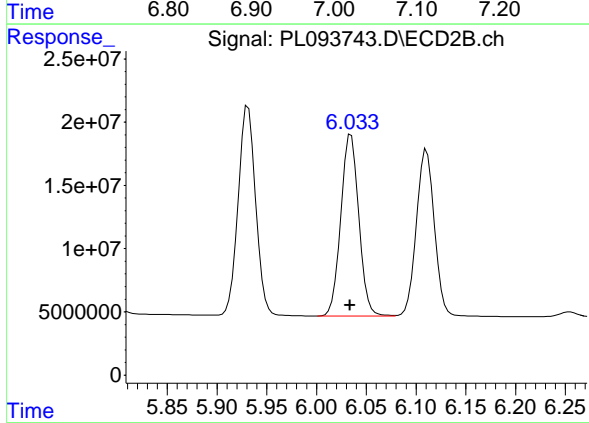
R.T.: 5.785 min
 Delta R.T.: 0.001 min
 Response: 178390286
 Conc: 56.51 ng/ml



#17 4,4' -DDT

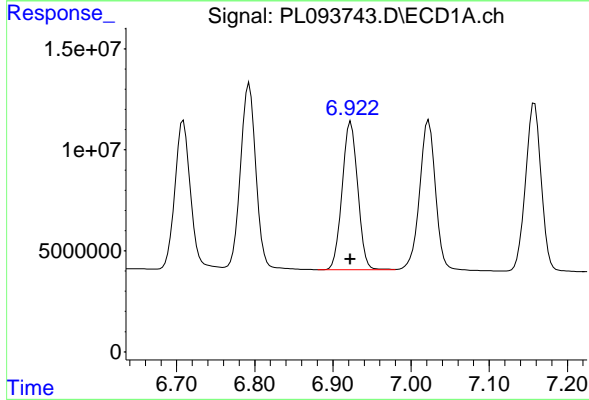
R.T.: 7.023 min
 Delta R.T.: 0.000 min
 Response: 104247092
 Conc: 52.86 ng/ml

Instrument :
 ECD_L
 ClientSampleId :
 ICVPL012125



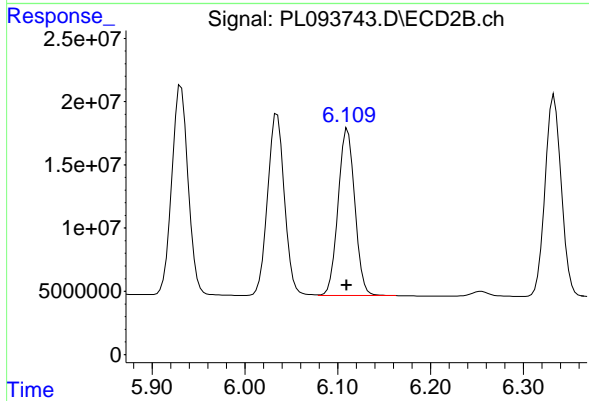
#17 4,4' -DDT

R.T.: 6.035 min
 Delta R.T.: 0.000 min
 Response: 181287401
 Conc: 55.71 ng/ml



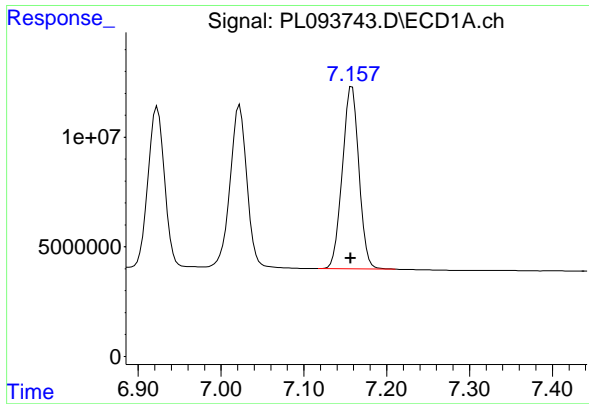
#18 Endrin aldehyde

R.T.: 6.923 min
 Delta R.T.: 0.000 min
 Response: 101761385
 Conc: 52.34 ng/ml



#18 Endrin aldehyde

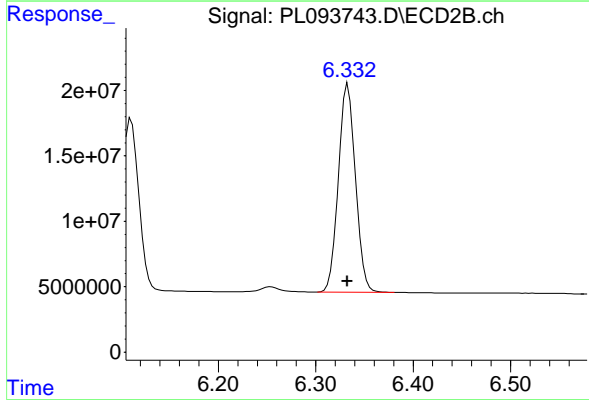
R.T.: 6.111 min
 Delta R.T.: 0.001 min
 Response: 165320369
 Conc: 54.30 ng/ml



#19 Endosulfan Sulfate

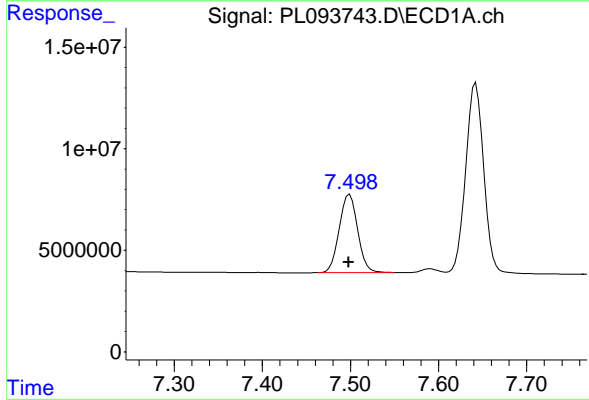
R.T.: 7.158 min
 Delta R.T.: 0.002 min
 Response: 115863257
 Conc: 51.18 ng/ml

Instrument :
 ECD_L
 ClientSampleId :
 ICVPL012125



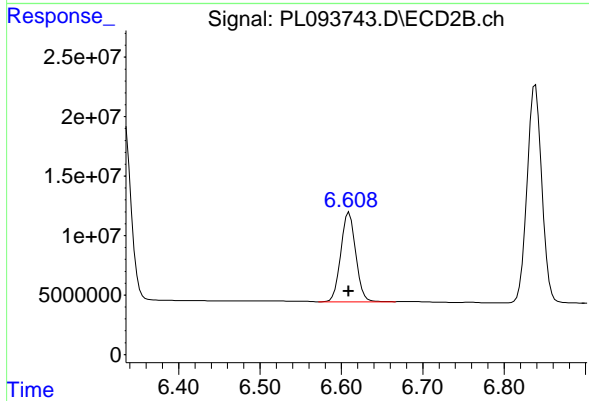
#19 Endosulfan Sulfate

R.T.: 6.333 min
 Delta R.T.: 0.000 min
 Response: 193788608
 Conc: 54.34 ng/ml



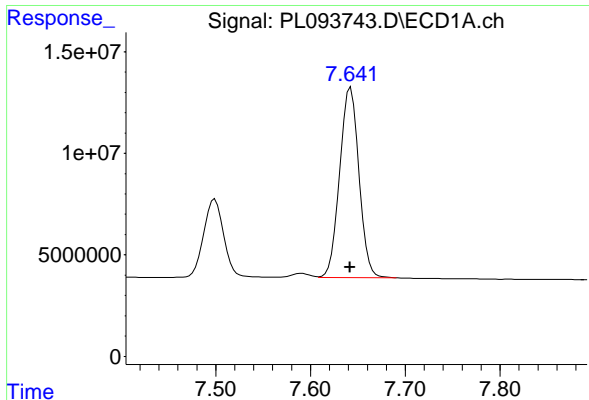
#20 Methoxychlor

R.T.: 7.499 min
 Delta R.T.: 0.000 min
 Response: 56233890
 Conc: 53.90 ng/ml



#20 Methoxychlor

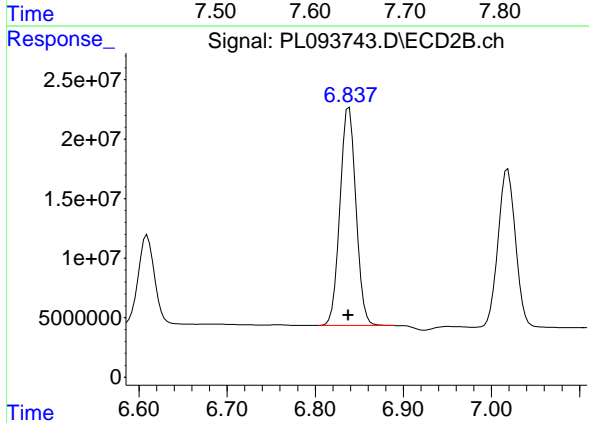
R.T.: 6.610 min
 Delta R.T.: 0.000 min
 Response: 95758805
 Conc: 53.55 ng/ml



#21 Endrin ketone

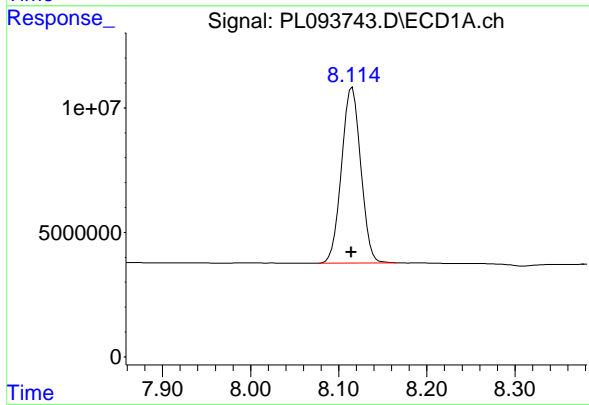
R.T.: 7.642 min
 Delta R.T.: 0.000 min
 Response: 132246340
 Conc: 52.42 ng/ml

Instrument :
 ECD_L
 ClientSampleId :
 ICVPL012125



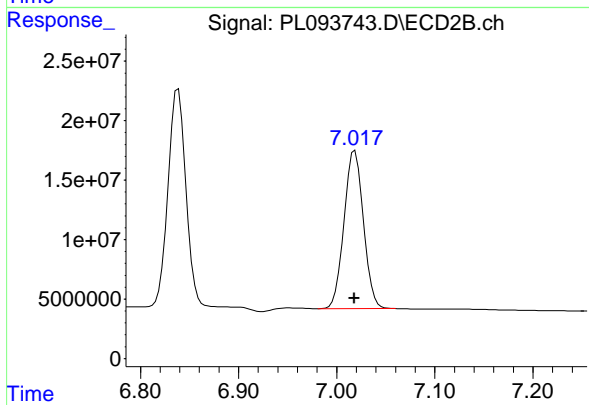
#21 Endrin ketone

R.T.: 6.838 min
 Delta R.T.: 0.000 min
 Response: 231241910
 Conc: 55.12 ng/ml



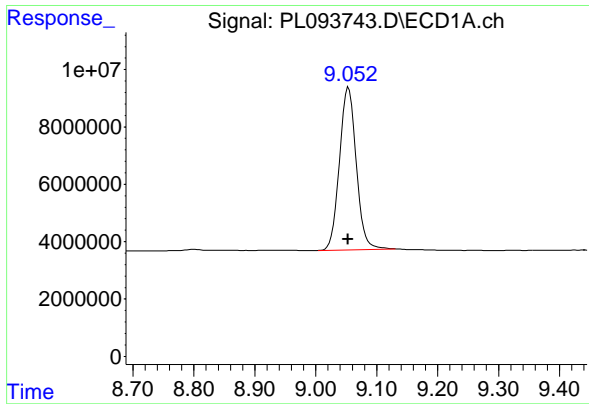
#22 Mirex

R.T.: 8.115 min
 Delta R.T.: 0.000 min
 Response: 106911145
 Conc: 51.34 ng/ml



#22 Mirex

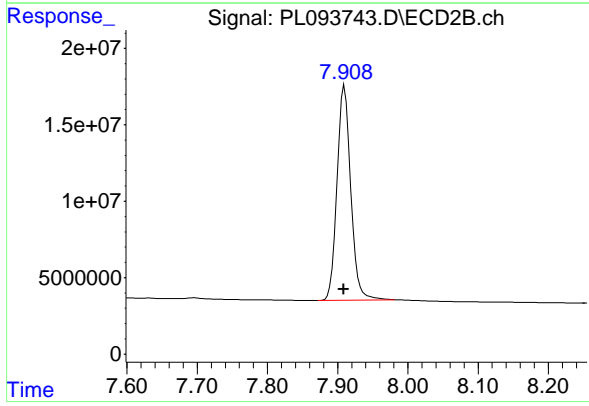
R.T.: 7.019 min
 Delta R.T.: 0.000 min
 Response: 182637497
 Conc: 54.00 ng/ml



#28 Decachlorobiphenyl

R.T.: 9.054 min
Delta R.T.: 0.001 min
Response: 108726317
Conc: 51.97 ng/ml

Instrument :
ECD_L
ClientSampleId :
ICVPL012125



#28 Decachlorobiphenyl

R.T.: 7.910 min
Delta R.T.: 0.001 min
Response: 190831116
Conc: 54.46 ng/ml