

Data Path : Z:\pestpcbsrv\HPCHEM1\ECD\_L\Data\PL013025\  
 Data File : PL093875.D  
 Signal(s) : Signal #1: ECD1A.ch Signal #2: ECD2B.ch  
 Acq On : 30 Jan 2025 09:45  
 Operator : AR\AJ  
 Sample : PEM  
 Misc :  
 ALS Vial : 3 Sample Multiplier: 1

**Instrument :**  
 ECD\_L  
**ClientSampleId :**  
 PEM

**Manual Integrations**  
**APPROVED**  
 Reviewed By :Abdul Mirza 01/31/2025  
 Supervised By :Ankita Jodhani 01/31/2025

Integration File signal 1: autoint1.e  
 Integration File signal 2: autoint2.e  
 Quant Time: Jan 30 16:49:26 2025  
 Quant Method : Z:\pestpcbsrv\HPCHEM1\ECD\_L\methods\PL012125.M  
 Quant Title : GC Extractables  
 QLast Update : Tue Jan 21 14:58:05 2025  
 Response via : Initial Calibration  
 Integrator: ChemStation

Volume Inj. : 1 µl  
 Signal #1 Phase : ZB-MR1 Signal #2 Phase: ZB-MR2  
 Signal #1 Info : 30M x 0.32mm x0.5 Signal #2 Info : 30M x 0.32mm x0.25µm

Compound	RT#1	RT#2	Resp#1	Resp#2	ng/ml	ng/ml
-----						
System Monitoring Compounds						
1) SA Tetrachlo...	3.539	2.774	58234433	66617739	21.626	20.409
28) SA Decachlor...	9.056	7.910	48290710	77833771	23.084	22.212
Target Compounds						
2) A alpha-BHC	3.995	3.276	42788345	47848913	11.161	9.787
3) MA gamma-BHC...	4.327	3.606	40826202	45132351	11.085	9.519
6) B beta-BHC	4.525	3.907	18699204	22111250	11.634	11.070
12) B 4,4'-DDE	6.192	5.229	400969	445694	0.165m	0.111m#
14) MA Endrin	6.575	5.637	117.4E6	188.0E6	50.073	50.917
16) A 4,4'-DDD	6.709	5.785	5001271	7342284	2.631m	2.326
17) MA 4,4'-DDT	7.025	6.035	207.6E6	387.3E6	105.296	119.016
18) B Endrin al...	6.925	6.110	3659175	6650657	1.882	2.184
20) A Methoxychlor	7.501	6.610	257.7E6	460.9E6	246.964	257.769
21) B Endrin ke...	7.643	6.837	8002066	12362592	3.172	2.947m
-----						

(f)=RT Delta > 1/2 Window (#)=Amounts differ by > 25% (m)=manual int.

Data Path : Z:\pestpcbsrv\HPCHEM1\ECD\_L\Data\PL013025\  
 Data File : PL093875.D  
 Signal(s) : Signal #1: ECD1A.ch Signal #2: ECD2B.ch  
 Acq On : 30 Jan 2025 09:45  
 Operator : AR\AJ  
 Sample : PEM  
 Misc :  
 ALS Vial : 3 Sample Multiplier: 1

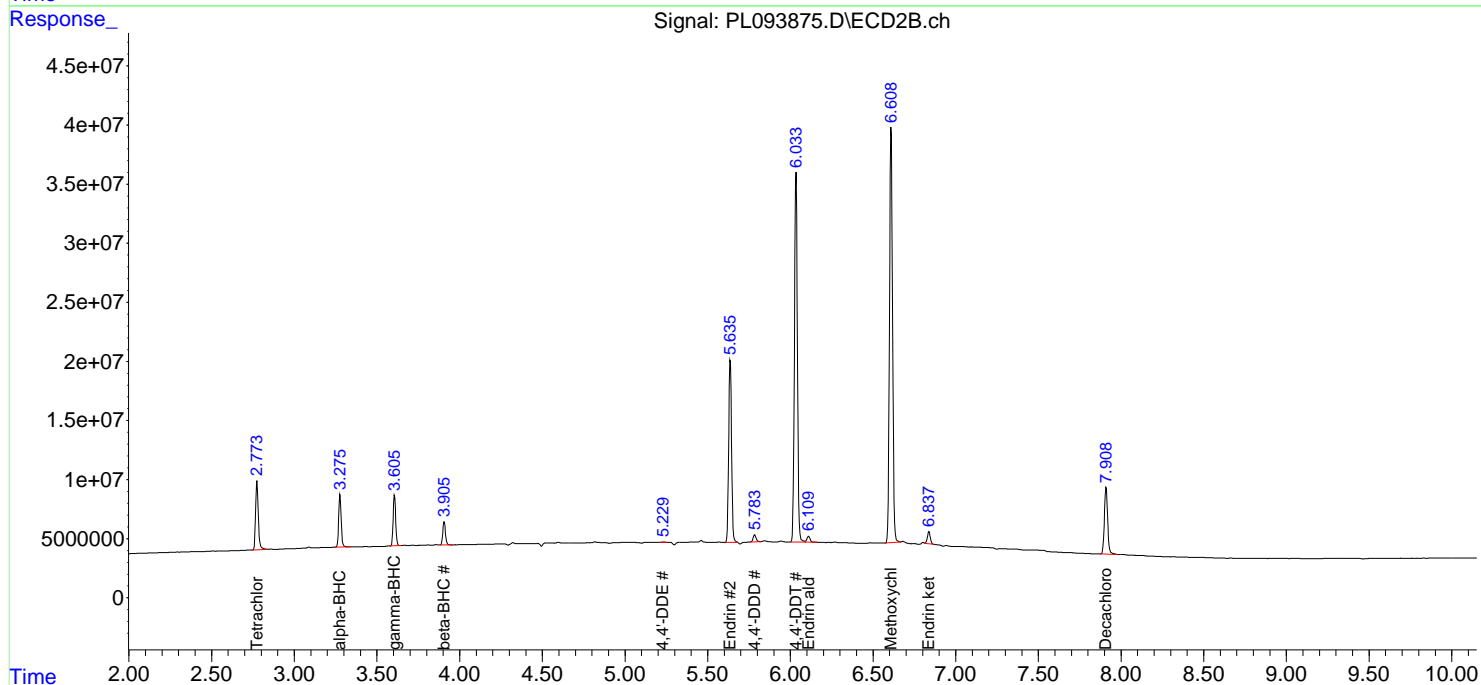
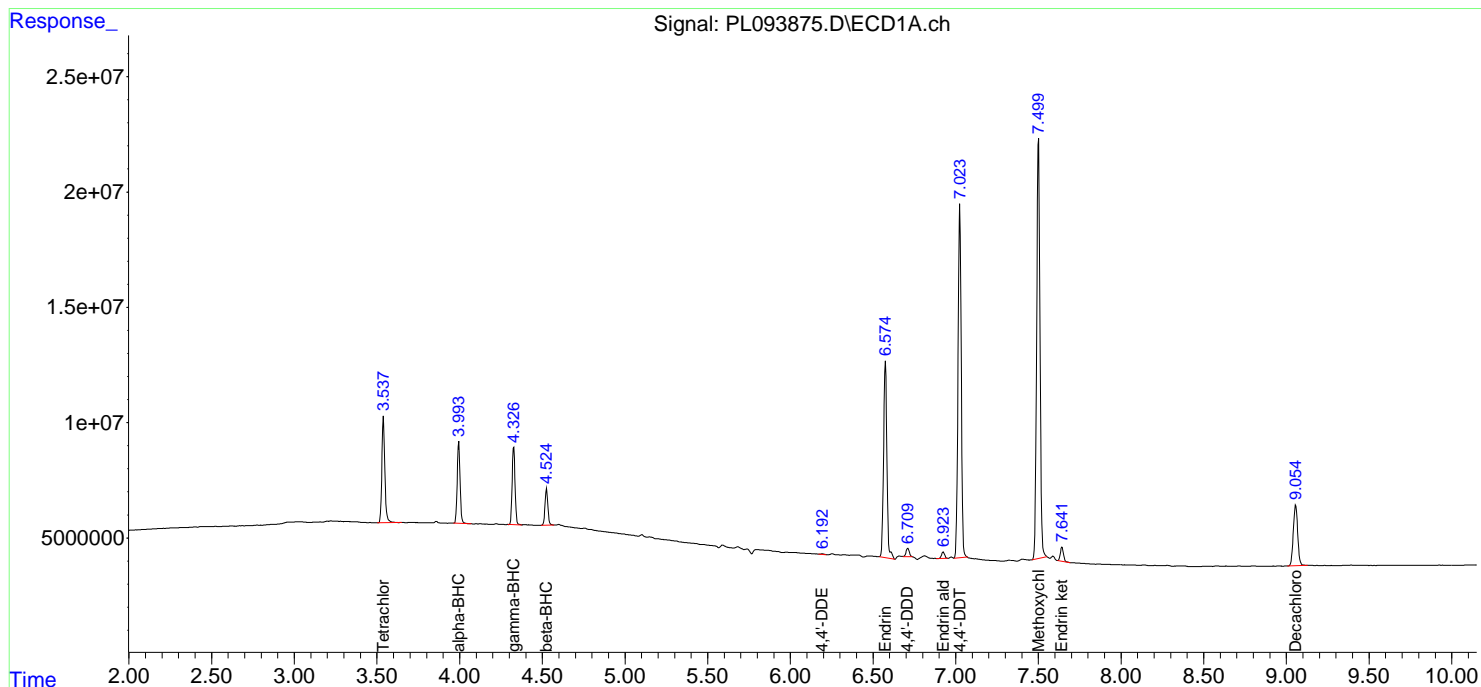
**Instrument :**  
 ECD\_L  
**ClientSampleId :**  
 PEM

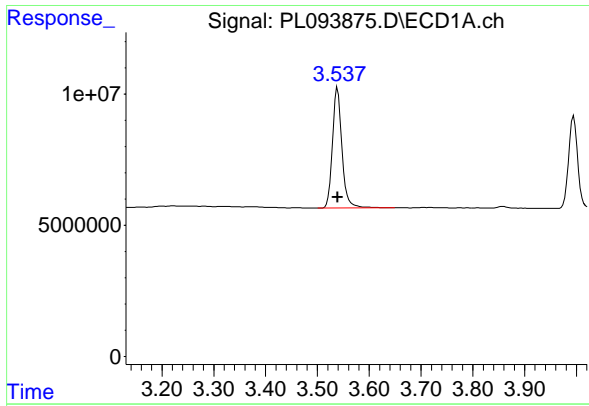
**Manual Integrations**  
**APPROVED**

Reviewed By :Abdul Mirza 01/31/2025  
 Supervised By :Ankita Jodhani 01/31/2025

Integration File signal 1: autoint1.e  
 Integration File signal 2: autoint2.e  
 Quant Time: Jan 30 16:49:26 2025  
 Quant Method : Z:\pestpcbsrv\HPCHEM1\ECD\_L\methods\PL012125.M  
 Quant Title : GC Extractables  
 QLast Update : Tue Jan 21 14:58:05 2025  
 Response via : Initial Calibration  
 Integrator: ChemStation

Volume Inj. : 1 µl  
 Signal #1 Phase : ZB-MR1 Signal #2 Phase: ZB-MR2  
 Signal #1 Info : 30M x 0.32mm x0.5 Signal #2 Info : 30M x 0.32mm x0.25µm





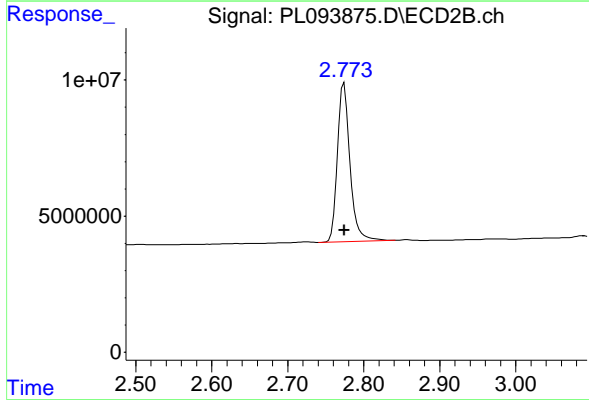
#1 Tetrachloro-m-xylene

R.T.: 3.539 min  
 Delta R.T.: 0.000 min  
 Response: 58234433  
 Conc: 21.63 ng/ml

Instrument :  
 ECD\_L  
 ClientSampleId :  
 PEM

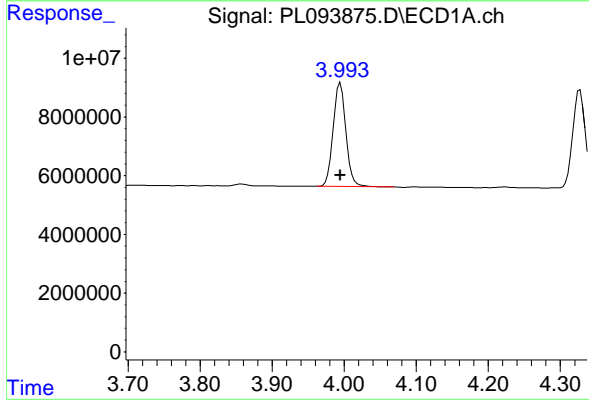
Manual Integrations  
 APPROVED

Reviewed By :Abdul Mirza 01/31/2025  
 Supervised By :Ankita Jodhani 01/31/2025



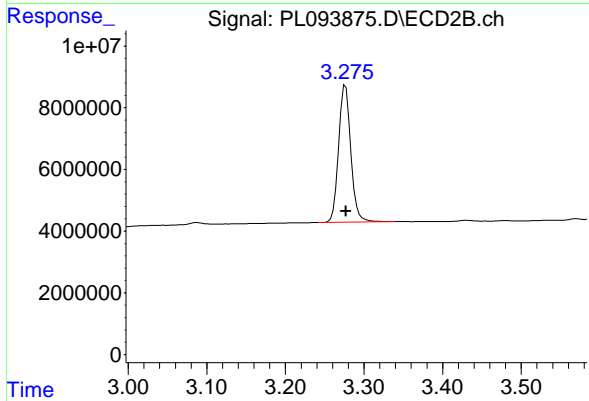
#1 Tetrachloro-m-xylene

R.T.: 2.774 min  
 Delta R.T.: 0.000 min  
 Response: 66617739  
 Conc: 20.41 ng/ml



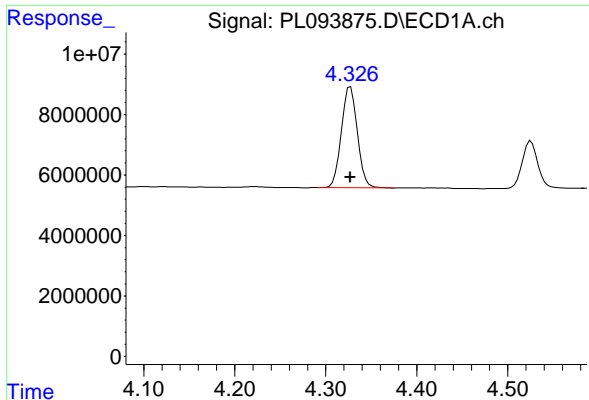
#2 alpha-BHC

R.T.: 3.995 min  
 Delta R.T.: 0.000 min  
 Response: 42788345  
 Conc: 11.16 ng/ml



#2 alpha-BHC

R.T.: 3.276 min  
 Delta R.T.: 0.000 min  
 Response: 47848913  
 Conc: 9.79 ng/ml



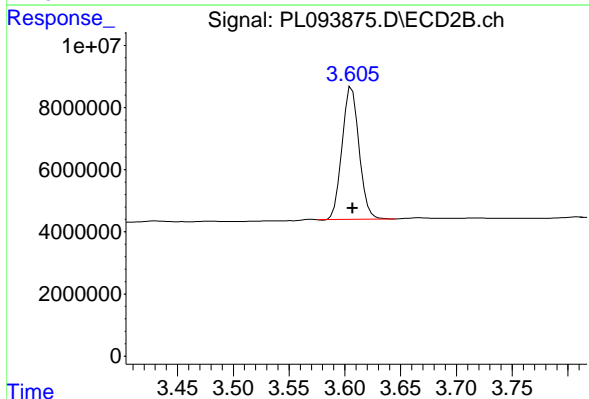
#3 gamma-BHC (Lindane)

R.T.: 4.327 min  
 Delta R.T.: 0.000 min  
 Response: 40826202  
 Conc: 11.09 ng/ml

Instrument :  
 ECD\_L  
 ClientSampleId :  
 PEM

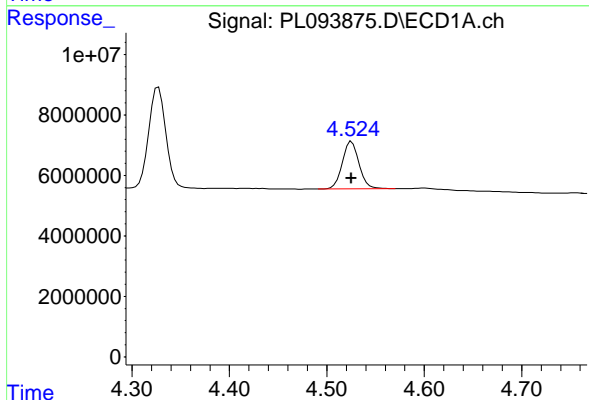
Manual Integrations  
 APPROVED

Reviewed By :Abdul Mirza 01/31/2025  
 Supervised By :Ankita Jodhani 01/31/2025



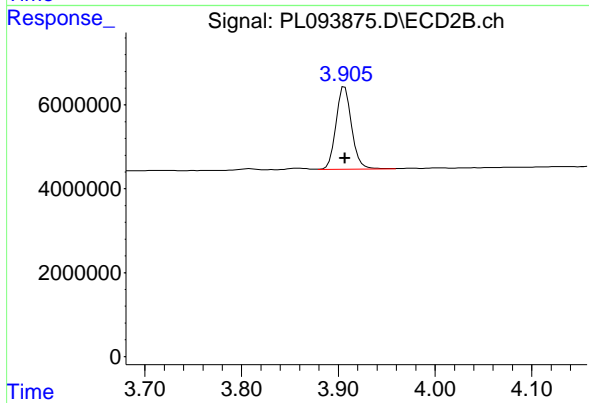
#3 gamma-BHC (Lindane)

R.T.: 3.606 min  
 Delta R.T.: 0.000 min  
 Response: 45132351  
 Conc: 9.52 ng/ml



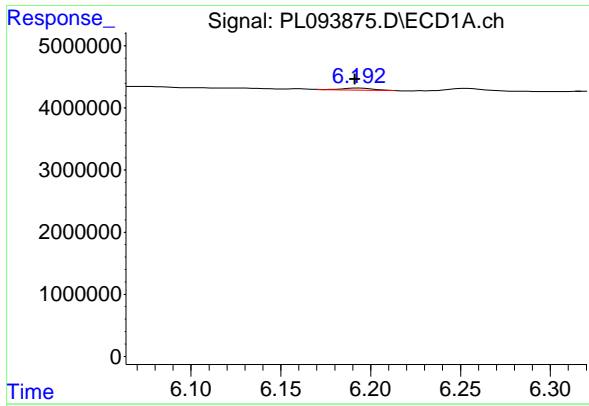
#6 beta-BHC

R.T.: 4.525 min  
 Delta R.T.: 0.000 min  
 Response: 18699204  
 Conc: 11.63 ng/ml



#6 beta-BHC

R.T.: 3.907 min  
 Delta R.T.: 0.000 min  
 Response: 22111250  
 Conc: 11.07 ng/ml



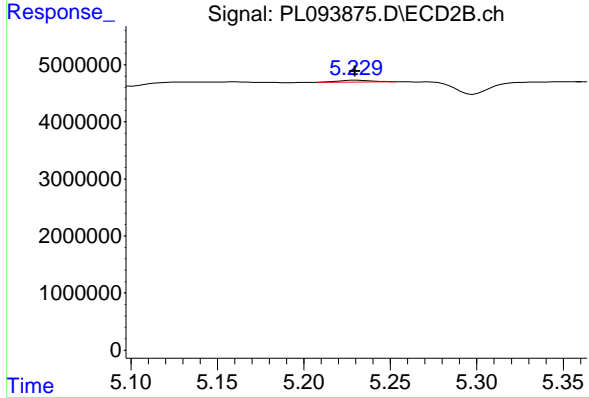
#12 4,4' -DDE

R.T.: 6.192 min  
 Delta R.T.: 0.000 min  
 Response: 400969  
 Conc: 0.16 ng/ml

Instrument : ECD\_L  
 ClientSampleId : PEM

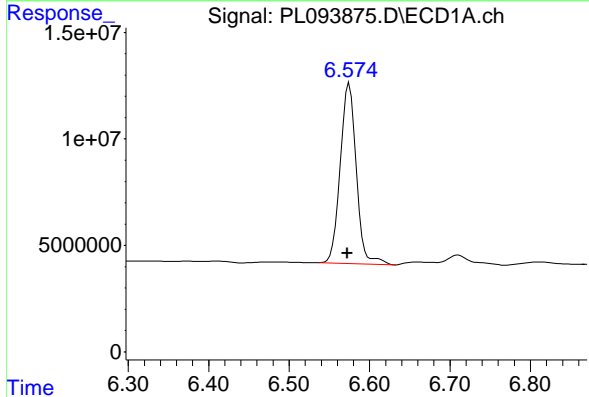
Manual Integrations  
 APPROVED

Reviewed By :Abdul Mirza 01/31/2025  
 Supervised By :Ankita Jodhani 01/31/2025



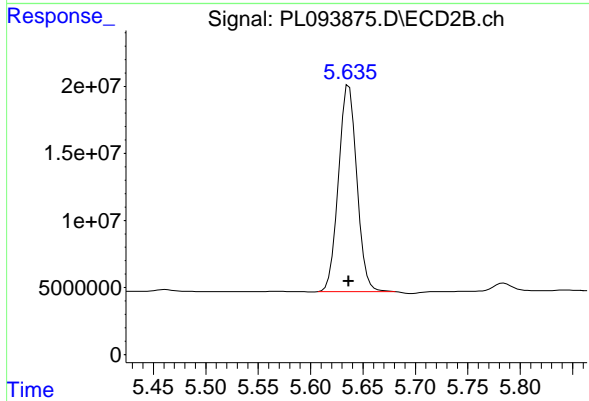
#12 4,4' -DDE

R.T.: 5.229 min  
 Delta R.T.: -0.001 min  
 Response: 445694  
 Conc: 0.11 ng/ml m



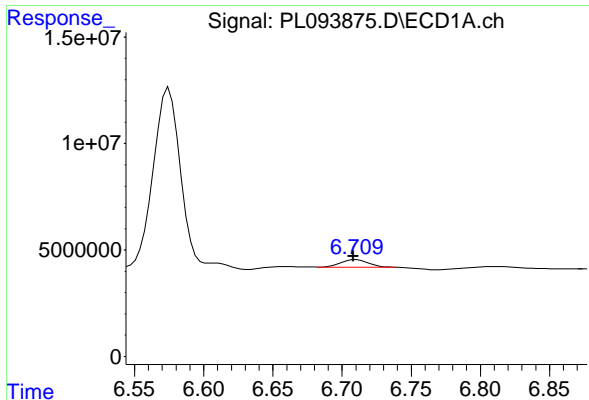
#14 Endrin

R.T.: 6.575 min  
 Delta R.T.: 0.002 min  
 Response: 117413171  
 Conc: 50.07 ng/ml



#14 Endrin

R.T.: 5.637 min  
 Delta R.T.: 0.000 min  
 Response: 188020317  
 Conc: 50.92 ng/ml



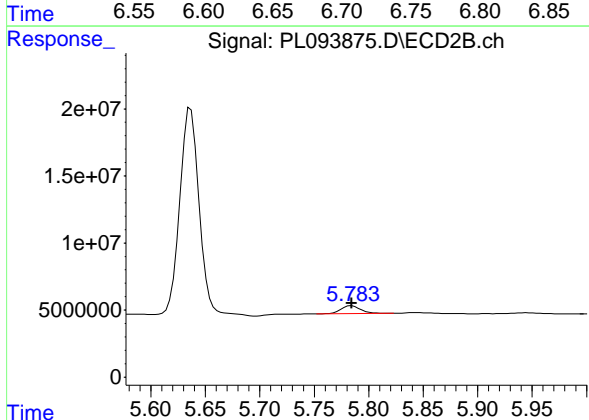
#16 4,4' -DDD

R.T.: 6.709 min  
 Delta R.T.: 0.000 min  
 Response: 5001271  
 Conc: 2.63 ng/ml

Instrument :  
 ECD\_L  
 ClientSampleId :  
 PEM

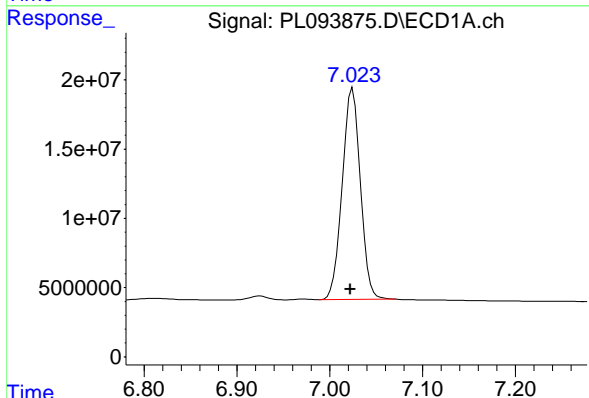
Manual Integrations  
 APPROVED

Reviewed By :Abdul Mirza 01/31/2025  
 Supervised By :Ankita Jodhani 01/31/2025



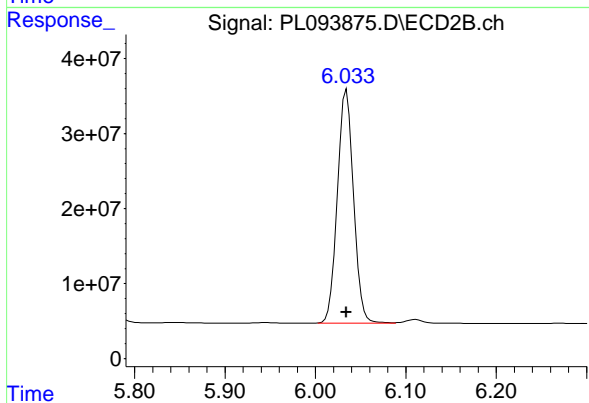
#16 4,4' -DDD

R.T.: 5.785 min  
 Delta R.T.: 0.000 min  
 Response: 7342284  
 Conc: 2.33 ng/ml



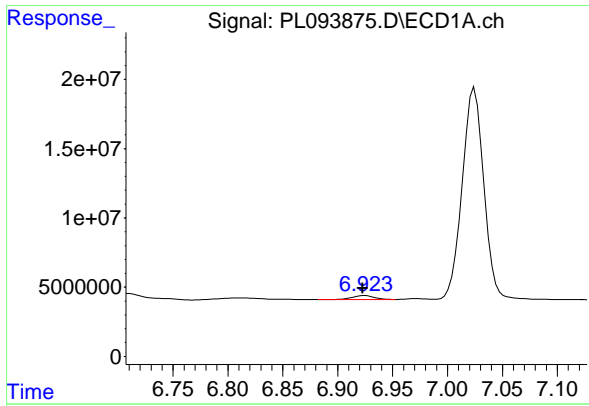
#17 4,4' -DDT

R.T.: 7.025 min  
 Delta R.T.: 0.002 min  
 Response: 207648822  
 Conc: 105.30 ng/ml



#17 4,4' -DDT

R.T.: 6.035 min  
 Delta R.T.: 0.000 min  
 Response: 387281860  
 Conc: 119.02 ng/ml



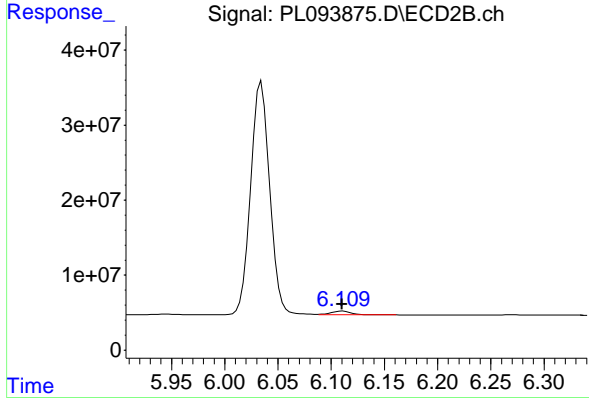
#18 Endrin aldehyde

R.T.: 6.925 min  
 Delta R.T.: 0.002 min  
 Response: 3659175  
 Conc: 1.88 ng/ml

Instrument : ECD\_L  
 ClientSampleId : PEM

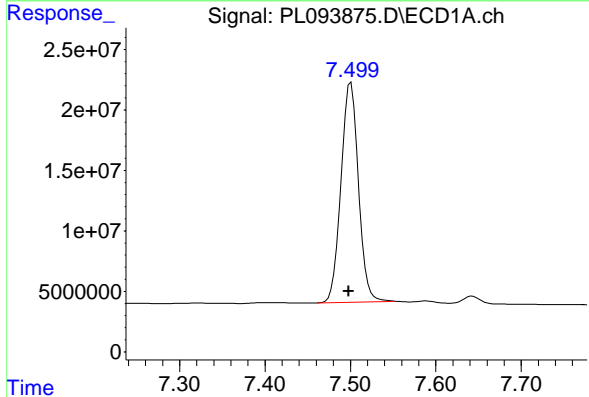
Manual Integrations  
 APPROVED

Reviewed By :Abdul Mirza 01/31/2025  
 Supervised By :Ankita Jodhani 01/31/2025



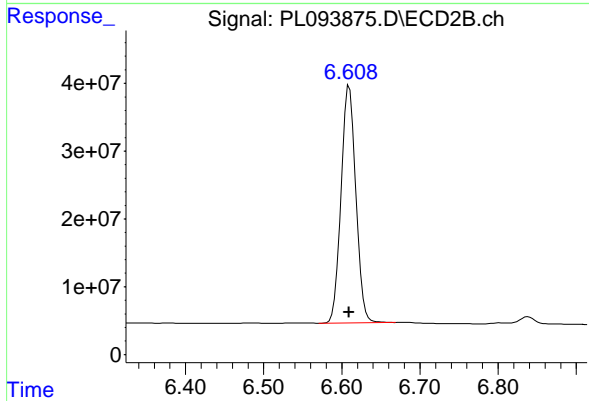
#18 Endrin aldehyde

R.T.: 6.110 min  
 Delta R.T.: 0.000 min  
 Response: 6650657  
 Conc: 2.18 ng/ml



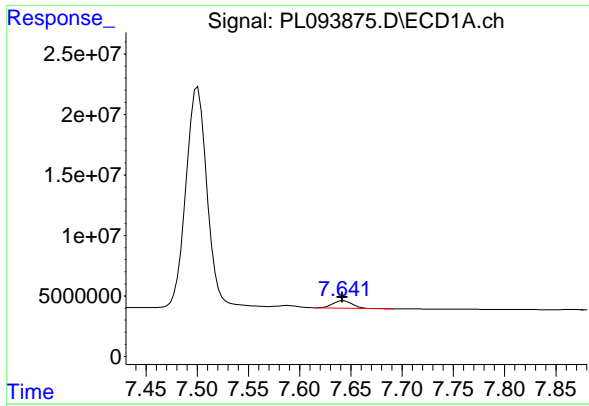
#20 Methoxychlor

R.T.: 7.501 min  
 Delta R.T.: 0.003 min  
 Response: 257681139  
 Conc: 246.96 ng/ml



#20 Methoxychlor

R.T.: 6.610 min  
 Delta R.T.: 0.000 min  
 Response: 460926471  
 Conc: 257.77 ng/ml



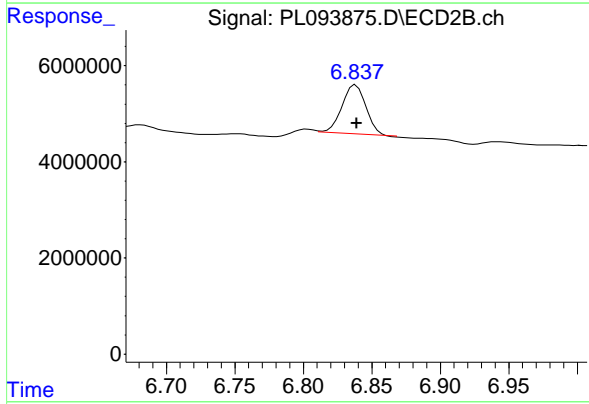
#21 Endrin ketone

R.T.: 7.643 min  
 Delta R.T.: 0.000 min  
 Response: 8002066  
 Conc: 3.17 ng/ml

Instrument :  
 ECD\_L  
 ClientSampleId :  
 PEM

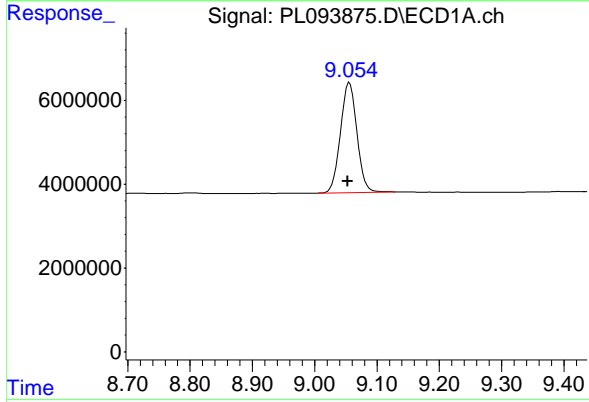
Manual Integrations  
 APPROVED

Reviewed By :Abdul Mirza 01/31/2025  
 Supervised By :Ankita Jodhani 01/31/2025



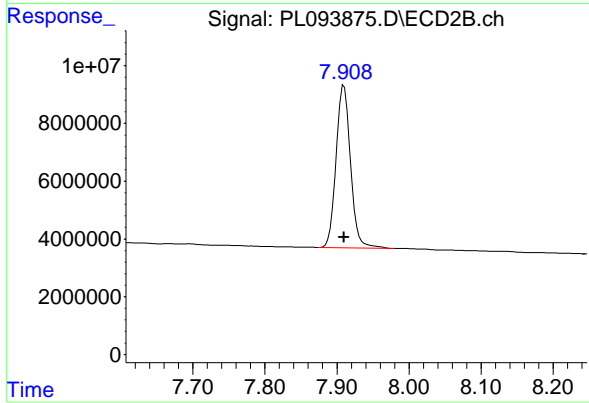
#21 Endrin ketone

R.T.: 6.837 min  
 Delta R.T.: -0.002 min  
 Response: 12362592  
 Conc: 2.95 ng/ml m



#28 Decachlorobiphenyl

R.T.: 9.056 min  
 Delta R.T.: 0.003 min  
 Response: 48290710  
 Conc: 23.08 ng/ml



#28 Decachlorobiphenyl

R.T.: 7.910 min  
 Delta R.T.: 0.000 min  
 Response: 77833771  
 Conc: 22.21 ng/ml